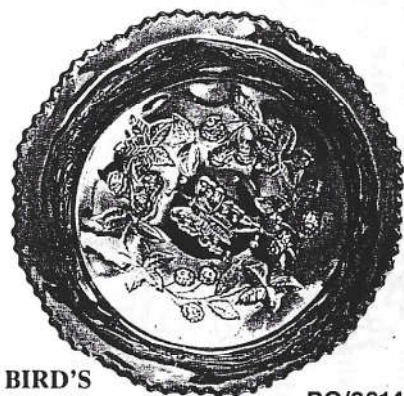


CARNIVAL BOWLS

GREAT COLLECTIBLES

PURPLE
IRIDESCENCE

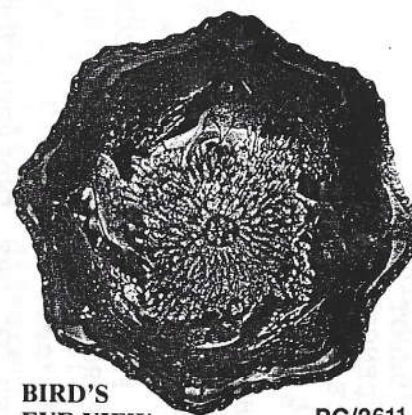


BIRD'S
EYE VIEW

PG/2614

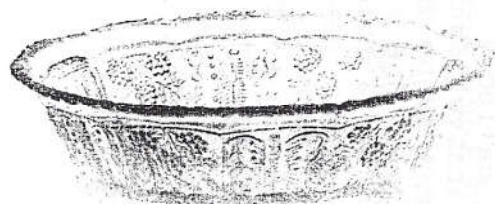
PG/2614 "BUTTERFLY" BOWL.
9 in. Each . . . 12.50

PG/2611 "STAG AND HOLLY"
BOWL. 9½ in. Each . . . 12.50



BIRD'S
EYE VIEW

PG/2611

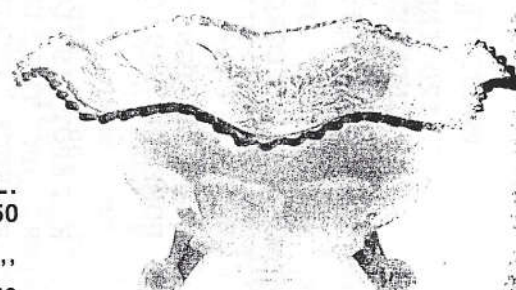


PG/2615

WHITE OPAL
IRIDESCENCE

PG/2615 "BUTTERFLY" BOWL.
9 in. Each . . . 12.50

PG/2612 "STAG AND HOLLY"
BOWL. 9½ in. Each . . . 12.50



PG/2612

"CARNIVAL GLASS"

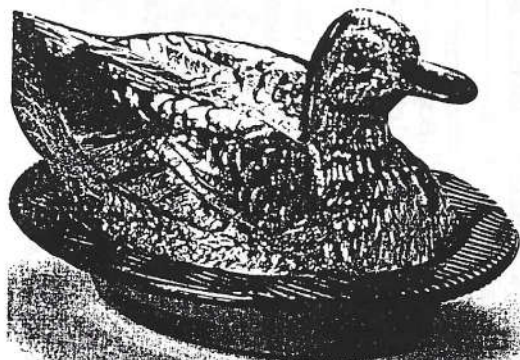
HIGHLY IRIDESCENT FIGURAL GLASSWARE

OFFERED IN DEEP PURPLE COLOR OR DARK
BLUE COLOR CORRESPONDING TO PICTURE



PG/2607 CARNIVAL "DOG AND
HAT" TOOTHPICK HOLDER. 3½ in.
across. Each . . . 2.50

PG/2608 CARNIVAL WATER
SET. Pitcher 6½ in. tall and 4
tumblers 4¼ in. tall (one shown).
5-piece set . . . 18.50



PG/2601 CARNIVAL DUCK. 8½ in.
across. Each . . . 6.25



PG/2602 CARNIVAL ROBIN. 6½
in. across. Each . . . 6.25



PG/2603 CARNIVAL SQUIR-
REL. 7 in. across. Each . . . 5.00