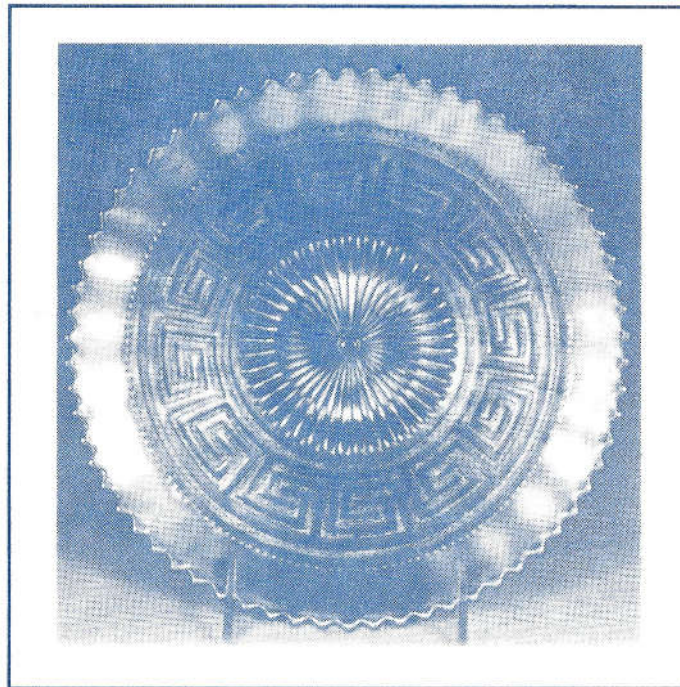

THE *COMMON* BLUES

By Richard Cinclair

(Reprinted in part from the TEXAS CARNIVAL GLASS NEWSLETTER, January 1992)



Blue Greek Key Plate

**Presented at Heart of America
Carnival Glass Association
Convention
April 1993**

The *Common* Blues

by *Richard Cinclair*

There was a time in our collecting when we had a dealer call us every time he found a piece of blue Carnival Glass. We still like the color but have gone on to other favorite colors too!

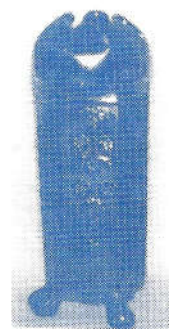
However, one of the interesting aspects of collecting Carnival is the lack of hard and fast rules. When it comes to color, are there rules? Is there a color that is always rare? To answer this question, red Carnival is always rare, but other unusual colors are not always so. For example, ice blue (a usually hard to find color) is relatively easily found in the Hearts and Flowers ruffled bowl. The same is true with ice green and the Peacocks plate. Not that either of the above mentioned pieces are cheap, but they do not command prices as high as the usual pastel colors do. In the old days there was a time when colors in the price guides and books were either marigold or dark. Blue was obviously listed as dark. Today blue has become perhaps the color with the most variations: Ice Blue, Cobalt, Renninger's, Teal, Sapphire, Persian, Celeste, just to name a few. Have you ever tried to explain these different colors on the phone to a new collector?

The above variations are so interesting to collect, but this article is about just good old fashioned common blue. But is it always common? When thinking of the uncommon blue, I suspect we turn to Millersburg. Anything in blue Millersburg is hard to find and

brings top dollar. Interestingly enough, Imperial, Cambridge, and Dugan also were skimpy on the number of patterns that they made in blue. If blue is common, then it must be that Northwood and Fenton made a high volume of their patterns in blue. This is partially true

A year or so ago, I stopped in a small antique shop in Dallas and found only two pieces of Carnival in the shop, a pair of small ruffled Fruits and Flowers bowls in blue. They were dirty and over-priced, so I passed up the opportunity to make the purchase. As I was driving home, I had a nagging thought about my recent find. The more I thought about the pair of bowls, the more I started to think about the fact that I had never seen blue small Fruits and Flowers bowls. In checking the auction guide, I discovered that only one had been sold in the past half dozen years. I believe it brought around \$400. Yes, I bought the pair of bowls and both were ELECTRIC under all of that dirt.

As I began to think about blue pieces that can be hard to find, I decided to compile a list. I also asked some of the experts to give me a list of the pieces they considered hard to find in blue. Below is the list - not short and not in any particular rank or order - but interesting to ponder:



Butterfly and Berry Hatpin Holder

Fisherman's Mug
Wishbone Bowl
Tornado Vase
Stork & Rushes Mug
Acorn Burrs Punch Cup
Stag & Holly Rosebowl

Birds & Cherries Chop Plate
Memphis Two Piece Fruit Bowl
Fashion Punch Cup
Grape Vine Lattice Water Set
Wide Panelled Epergne
Embroidered Mums Plate



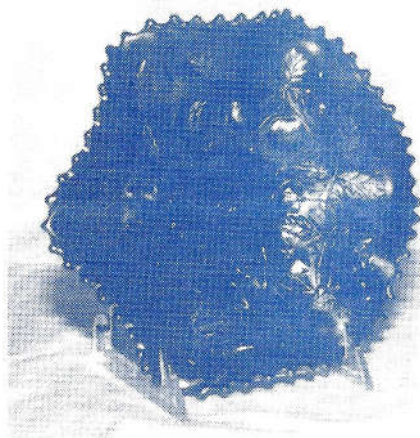
Starflower Pitcher

Ripple Vase
Waterlilly & Cattails Tumbler
Oriental Poppy Water Set
Singing Birds\ Sauce
Lions Plate
Horse Medallion Plate
Raspberry Water Set
Grape Arbor Water Set
Greek Key Plate
Nu-Art Homestead Plate

Kittens, all shapes
Rising Sun Water Set
Beaded Shell Mug
Maple Leaf Water Set
Corn Vase
Strawberry Scroll Water Set
Inverted Strawberry Tumbler
Elk's Bell
Two Row Open Edge Plate
Butterfly & Berry Hat Pin Holder

Goddess of Harvest Bowl
Dragon & Lotus Plate
Hearts & Flowers Plate
Lily of the Valley Water Set
Diamond Point Basket
Coral Bowl
Concord Plate
Leaf Tiers Water Pitcher
Grape & Cable Master Punch Set
Grape & Cable Humidor
Grape & Cable Hat Pin Holder
Grape & Cable Sweet Meat
Grape & Cable Bowls & Plates
Fruits & Flowers Small Bowls
Peter Rabbit Bowls & Plates
Peacock & Grape Plate

Virginia Blackberry
Miniature Pitcher
Sailboats Plate
Peacock Tail Plate
Western Thistle Tumbler
Star Flower Water Pitcher
Hearts & Flowers PCE Bowl
Grand Thistle Tumbler
Lucile Tumbler
Field Flower Tumbler
Winged Panels Pin Box
Curved Star Child's Dish
Puritan (McKee) Sauce
All Millersburg Blue
All Imperial Blue
All Cambridge Blue
All Dugan Blue



Fruits and Flowers Ruffled Bowl



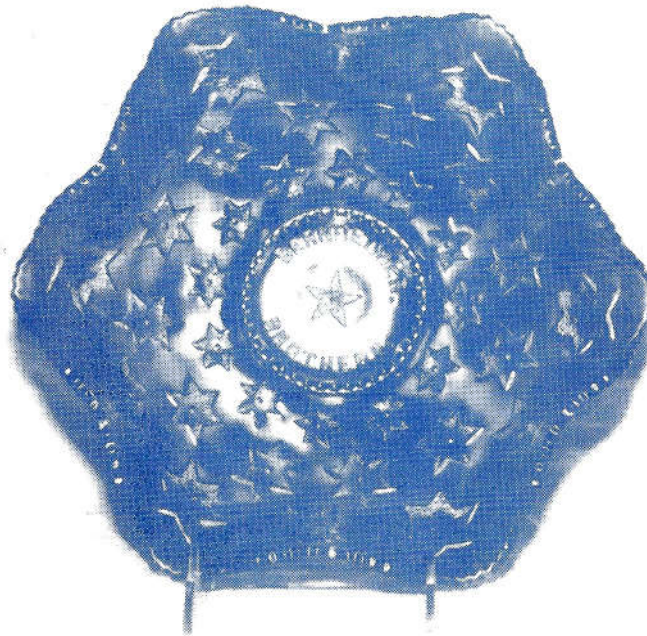
Grape and Cable Sweetmeat

Most people who collect Carnival get into it for the sheer beauty of the glass. However, one can not help but get caught up in the desire to have the beautiful but uncommon. Blue fits this criterion.

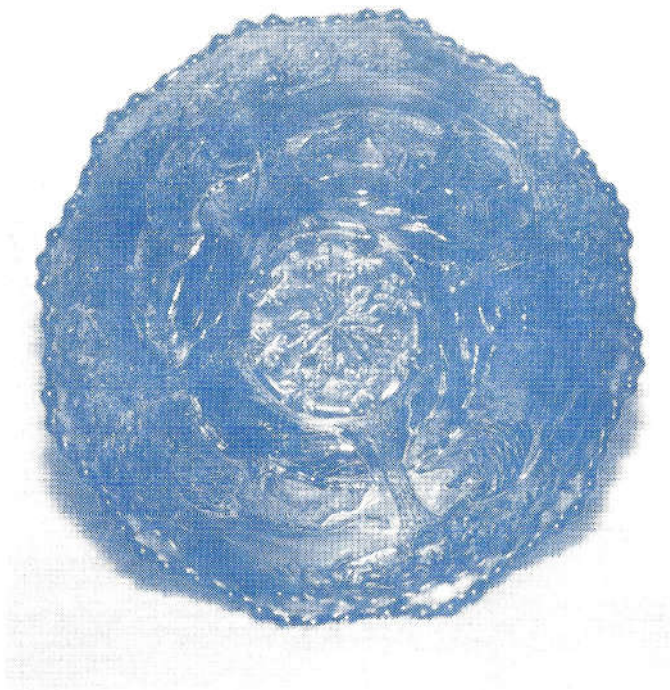
Carnival is so complicated. A pattern may be common based on color or shape and the reverse is also true. A couple of years ago a fellow from England came to our home to get help in “understanding” Carnival. He was a dealer. After a couple of hours of coaching and explaining that marigold in some patterns and shapes was worth more

than other colors, he announced that he was confused. He wanted rules to live by when he went back to England to purchase antiques for his shop. Finally, he felt he had two rules: Red is good and so are two peacocks.

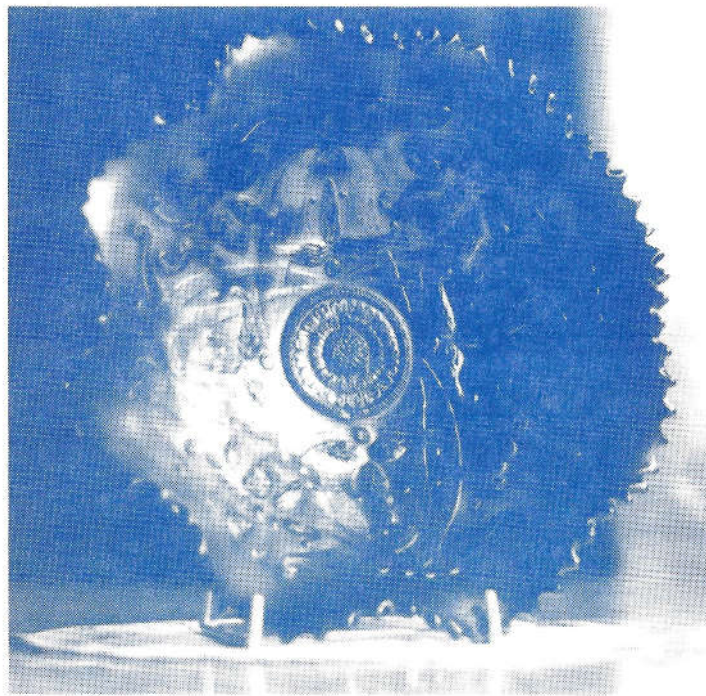
In the end if it is pretty, it is good. Collecting should be fun and for the beauty of the glass. But when you come to sell your collection or even a single piece, it is good to know that common colors can sometimes be uncommon. Such is the case of the “uncommon” blues.



Bernheimer Bowl (Millersburg)



Lions Plate



Blue Wishbone Footed Bowl