

# Encore By Dorothy



Book I <sup>by</sup> Dorothy Taylor



"ENCORE" means to perform again!

Carnival Glass has made its Encore.

To keep from confusing you, "Encore by Dorothy" is to be several books showing pictures, numbers, and colors of our new glass.

"CARNIVAL GLASS ENCORE" is a publication on new and reproduced carnival glass which is published every other month. It is a subscription publication.

Information on either of these can be obtained by writing the author.

Dorothy Taylor  
P.O. Box 11734  
Kansas City, Missouri  
64138

Second Printing Jan. 1984

## INTRODUCTION

In the interest of the hobby of New Carnival Glass we have attempted to put together Book I. We are by no means experts on this. The main reason for these books is to try to put together factory numbers with names so people will know what to call them.

We have received many letters asking what you call a certain number so decided to put the names and numbers with the pictures. Some of the pieces were not named. We tried to stick with the known names and the others we called what we thought was reasonable. In the back of this book you will find several blank sheets for notes. As errors, omissions and name corrections are reported to us we will publish them in the next issue of Encore so you can keep Book I up to date. Although every effort has been made to be correct, our research material has come from several different sources which may not always agree. Any help will be gratefully received and credit given when published in Encore.

Many companies have reproduced our old carnival glass from the original old molds. In the past few years they have also made many pieces that were never made in carnival before. In putting this book together it is my hope that it will help the collectors of old carnival to know what has been reproduced as well as



the new collectors who are trying to collect the new carnival put names and companies with their collection.

It wasn't too many years ago that a lot of us considered new carnival a threat to our old collections. As an old collector, I remember carrying my Hartung and Presznick books with me wherever I went. We would get out our books and study each piece before we bought it to be sure it wasn't new. If it were new we would turn our noses up and go on. That's what you could call an ostrich with its head in the sand. If we had only bought the pieces then at the prices then how happy I would be now.

New carnival has become so popular and there are thousands of collectors around the country who collect the new carnival. We have learned to love the new pieces as well as the old. We started buying them for comparison and first thing you know we were hooked.

We know many collectors who have their homes filled with this new glass. They have it displayed in china cabinets and every other available spot. They are just as proud of it as the old collector is of his old carnival.

I might add here that the new carnival has turned out to be a terrific investment for many already and think of the years left for that investment to grow. It has many years left before it will hit its peak. One thing about it a collector doesn't have to pay thousands of dollars

now for a rarity in new carnival but give it another few years and see what you will have to pay. Have you tried to go to the stores and shop and find new carnival lately? It's harder to find than old carnival right now.

#### What To Collect

First of all, collect for what you like, what looks pretty in your home, and what you can be proud of. The investment will take care of itself in the years ahead. It is our opinion that the souvenirs and limited editions are good (providing they are limited). These are made in far smaller lots than the regular factory lines.

The early pieces with the IG (Imperial Glass) are very much in demand now as well as Fenton's earlier pieces.

Also, when a company goes out of business everyone looks for their pieces. Look what the old Joe St. Clair pieces did when Joe sold his molds. Mrs. Degenhart's pieces are very much in demand since her death.

Charlie Gibson's original pieces will have their day too as he wasn't in business too long and there aren't that many pieces out there to be found.

The Hansen pieces are others that have disappeared.

As the new glass and colors appear on the market buy the pieces you like then. Don't wait or you will be paying a lot higher price a year from then when it's



discontinued.

Mosser, Westmoreland, L.E. Smith and others have also made some beautiful collectible glass. Also, Levay Glass and L.G. Wright Glass have had some beautiful pieces made for them.

Several individuals have had a run or two made on certain items that will some day be sought after. There is such a wide choice right now that we suggest you buy it while it's reasonable.

If you're doing it only for investment sell it when the children are ready for college and see what happens. From experience, I know that money in the bank never paid this kind of interest.

#### COLORS

Rubigold - marigold - reddish orange  
Peacock - smokey gray  
Helios - green with silver and gold iridescence.  
Aurora Jewels - cobalt - dark blue  
Sunset Ruby - red - reddish yellow  
Azure - ice blue  
Vaseline - yellow

To tell the color of a piece of carnival, hold the base up to a strong light and the color you see through the base is the color no matter what surface colors you see.

#### FACTORY MARKS

Fenton - Fenton in oval  
Imperial - IG and LIG

Westmoreland - W with a G through it  
Smith - small s  
Joe St. Clair - Joe St. Clair JSTC  
Bob St. Clair - Maude and Bob St. Clair  
L.G. Wright - W with line under enclosed in circle.  
Wheatoncraft - Paper label - Wheatoncraft  
Mosser - M, when signed  
Guernsey Glass - B  
Summit Art Glass - V  
Degenhart, Crystal Art Glass - D enclosed in a heart  
Boyd Art Glass - B in a diamond  
Indiana - no signature  
Fostoria - no signature  
Jeannette Glass Co. - no signature  
Federal Glass Co. - no signature  
Pilgrim Glass Co. - no mark  
Wetzel - R.W.  
Gibson - Gibson  
Lester Cunningham - small i inside big C

Our thanks to all those of you who helped by sending pictures and helped to identify patterns and known colors. We plan to call on you again as Book II will come out next year.



# TABLE OF CONTENTS

Acanthus Bowl	1
Acanthus Mug	2
Alley Cat	3
Basket Weave Sugar & Creamer	4
Boot - Toothpick Holder	5
Boot Rollerskate - Toothpick Holder	6
Bubble Lamp	7
Buster Bass - Fish	8
Butterfly - Candle Holder	9
Cactus - Salt & Pepper	10
Cactus - Tumbler	11
Checkerboard Water Set	12
Cherry - Sugar & Creamer	13
Cherry Blossom - Butter Dish	14
Cherry & Lattice - Butter Dish	15
Chrysanthemum - Planter	16
Chrysanthemum - Vase	17
Corn Vase	18
Cornucopia - Toothpick Holder	19
Cruet	20
Cuspidora - Cuspidore	21
Dahlia - Water Set	22
Daisy - Basket	23
Daisy & Button - Boot Toothpick Holder	24
Daisy & Button - Bootee	25
Dewey - Butter Dish	26
Diamond Lace - Bowl	27
Dolphin (covered)	28
Drama - Vase	29
Eagle Candy Dish	30
Eagle Lamp	31

Eagle & Star - Mug	32
Field Flower - Water Set	33
Fish - Paperweight	34
Floral Panel - Vase	35
Flute - Water Set	36
Four-Seventy-Four - Water Set	37
Frolicking Bears - Water Set	38
Geometric - Bowl	39
God and Home - Water Set	40
Grape Wine Decanter	41
Grape Salt & Pepper	42
Grape Sugar & Creamer	43
Grape - Water Set	44
Grape and Cable - Nut Bowl	45
Grape and Cable Thumbprint - Tumbler	46
Grapevine & Lattice - Water Set	47
Harvest - Water Set	48
High Hob (Nail) - Water Set	49
HOACGA - Good Luck Water Set	50
Hobnail Water Set	51
Hobnail Juice Set	52
Hobstar Variet - Water Set	53
Holly Creamer	54
Imperial Lace - Vase	55
Inverted Fan & Feather - Tumbler	56
Inverted Peacock - Min. Water Set	57
Inverted Strawberry - Water Set	58
Inverted Thistle - Butter Dish	59
Inverted Trout - Min. Punch Set	60
Iris - Nappy	61
Jaws - Paperweight	62
Kite & Panel - Goblet	63
La Bella Rose - Vase	64
Leaf - Vase	65
Leaf & Orange Tree	66
Lion - Box & Cover	67



Loganberry - Vase	68
Lovebird - Vase	69
Lustre Rose - Water Set	70
Maple Leaf - Water Set	71
Mary & Jesus - Plaques	72
Mayflower - Water Set	73
Moon & Star - Water Set	74
Octagon Variet - Water Set	75
Orange Tree & Cherry	76
Owl - Paperweight	77
Paneled Grape - Water Set	78
Paneled Holly - Tumbler	79
Peacock Childs Mug	80
Peacock Tail - Vase	81
Pet Mug	82
Pilgrim - Pitcher	83
Rabbit	84
Rambler Rose - Water Set	85
Ram's Head - Bowl & Candle Stick	86
Robin - Water Set	87
Rooster - Match Holder	88
Rose - Candle Holders	89
Rose - Compote	90
Shrine Fez - Toothpick Holder	91
Stork & Rushes - Water Set	92
Sundial - Vase	93
Swan	94
Swan Salt Dip	95
Three In One	96
Three Swan	97
Tiara	98
Tiger Lily	99
Tommy Hawk	100
Top Hat - Toothpick Holder	101
Turkey (covered)	102
Turtle	103

Urn Toothpick Holder	104
Wide Panel Rose Bowl	105
Wild Strawberry - Covered Box	106
Windmill Water Set	107
Zipper Loop - Lamp	108
Zodiac	109



## ACANTHUS

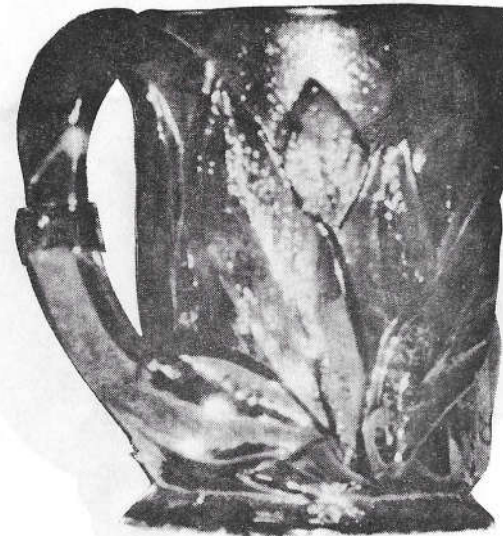


No. 3800/57B made by Imperial in 1970 in Sunset Ruby. I thought this one showed the pattern very well.

Acanthus was made in several pieces in this color in 1970. There was a sugar and creamer, compotes, candle holders, covered box, and other bowls.

The one shown here is an 8 inch flared, four footed bowl.

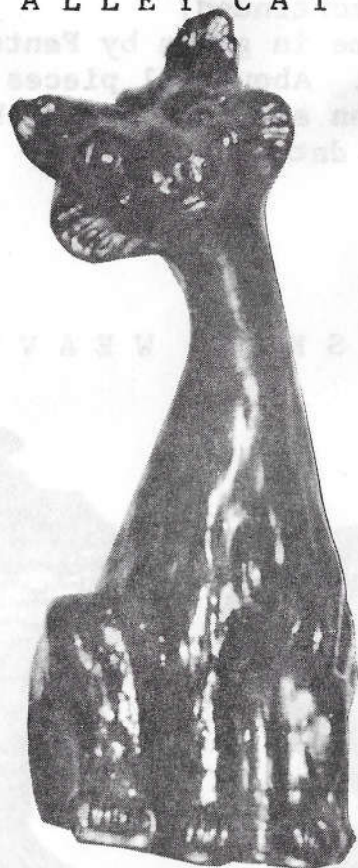
## ACANTHUS



Shown here is the Acanthus mug. It is very heavy looking and very pretty. In my estimation it would be one of the rarer or harder to find pieces. I've seen very few of these mugs. It was made in Sunset Ruby No. 3800/43 in 1970 by Imperial.



## ALLEY CAT



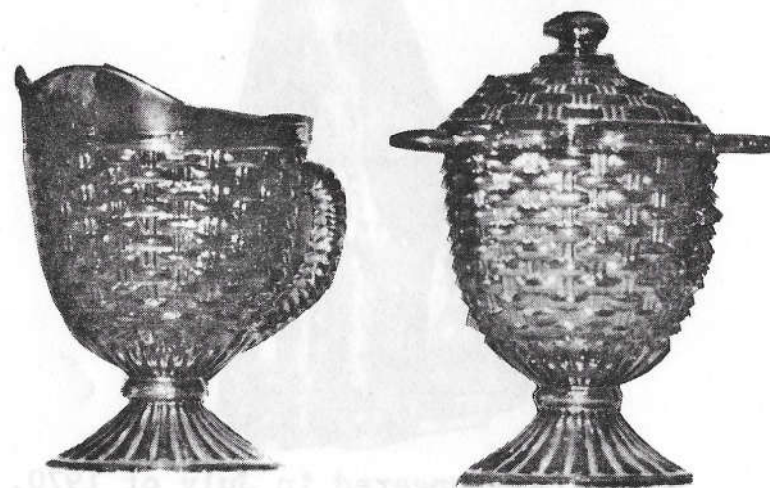
Alley Cat appeared in July of 1970. He was made in Amethyst by Fenton Art Glass Co. I'm quite sure he is a he because look at his face, look at that grin, look at him winking. Can't you just see him sitting on the fence in the alley watching all the kitties go by? To me this is the happiest piece made in new carnival. I can find no signature on mine.

In 1977 Alley Cat was made again

## ALLEY CAT (continued)

but this time in green by Fenton for Levay Glass. About 181 pieces were made in green and they are etched with the number, date, and Levay.

## BASKET WEAVE



This sugar and creamer were made in Peacock and Rubigold. It's rather an unusual design as all around the edge of the sugar bowl spoons were hung.

This was one of Imperial's earlier (1966) pieces and after 1968 it never appeared in the catalogs again. These are a little hard to come by also.



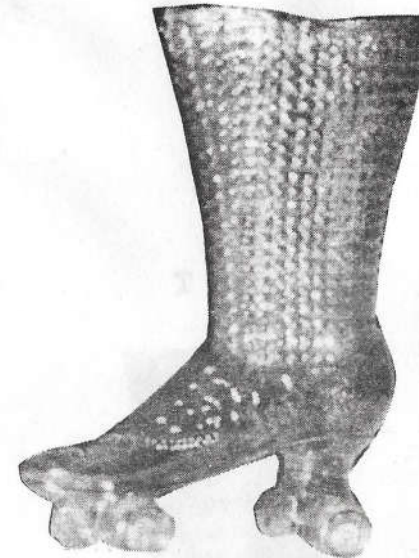
BOOT ROLLERSKATE

B O O T



This little boot was made by Imperial in Azure Blue in 1970. It makes a nice little toothpick holder. It was No. 100.

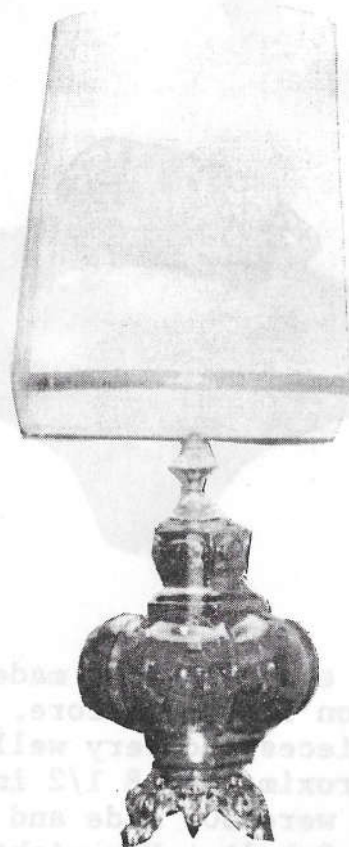
B O O T R O L L E R S K A T E



This one was made by Degenhart and probably iridized by Crider. I don't think you would find many of these as they were not iridized at the factory. A lot of pieces were sold in different colors at the factories and several people would iridize them at their shop. The Hansens were also people who iridized peoples glass.

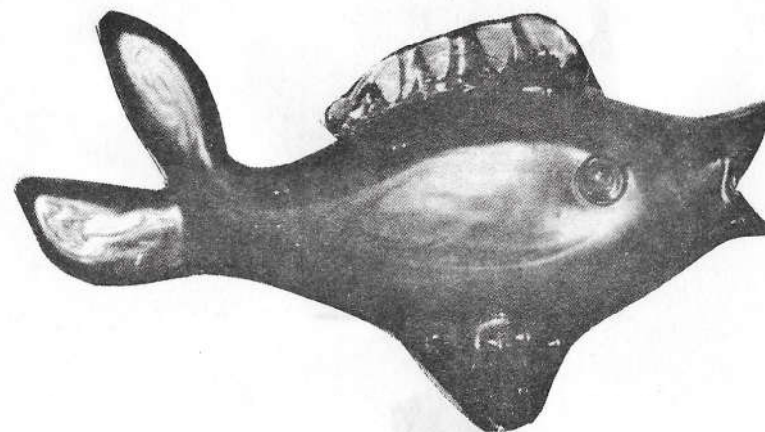


## BUBBLE LAMP



Many lamps have shown up on the market in the last couple of years. I have not been able to find out who made them but shown here is an example. It's a large lamp and was made in Amber and Blue. The Blue is a little darker than Ice Blue. It is electric and a 3 way setup. Either the top lights up alone or both the top and bottom or also the bottom can be used as a nightlight. The shade was included. It was manufactured by Richard's of California.

## BUSTER BASS



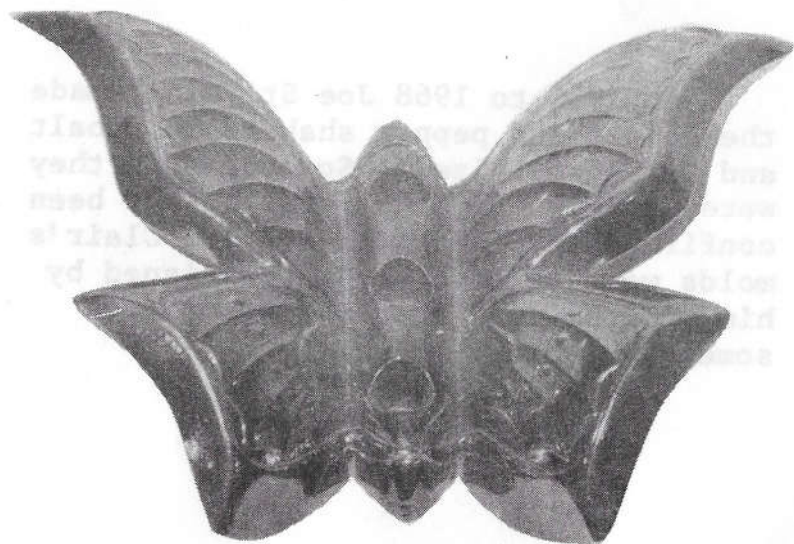
No. 1 in a series of 5 made by Charlie Gibson for the Encore. These were blown pieces and very well done. They are approximately 8 1/2 inches long. There were 300 made and signed by Gibson in Cobalt. You might find other colors in these but they won't be numbered and not part of the 300 made in 1976.

Who's to say what a glass artist might do if he had a tank of glass in another color, but they would be very few in number.

## BUTTERFLY

This butterfly candle holder was a sample made by the Fenton Art Glass Co. Mr. Bill Fenton, president of the company, said there were very few of these made in Amethyst carnival. They tried them out in Amber and Blue also but not iridized.

In the Amethyst carnival less than 100 were made and probably fewer than this. These were made about 1974. They still own the mold and some day may try it again in some other color. This would be considered a rarity in any collection.



## CACTUS



In 1965 to 1968 Joe St. Clair made these salt and pepper shakers in Cobalt and Carmel iridized. Someone said they were made in White but this hasn't been confirmed yet. Most of Joe St. Clair's molds were sold so any piece signed by him will be good sought after pieces some day.



## CACTUS



Joe St. Clair made this in 1968 to 1970. Some may be signed and some may not. They were made in Cobalt, Amber, Red, White, and Marigold.

## CHECKERBOARD



This was a Westmoreland pattern made in Honey, Ice Blue and Amethyst. It was also made in Lime Green in 1976, and Cobalt in 1978 for Levay Glass. A smaller juice set was also made in Blue Opal for Levay. This is Westmoreland's 500 series. Several other pieces were made at the same time in Honey and Ice Blue. They included a celery or vase, covered butter, and a covered sugar and creamer.

## CHERRY



Millersburg Cherry pattern appeared in January 1974 in this very attractive sugar and creamer. It was made by Fenton and was No. 8402.

## CHERRY BLOSSOM



Miniature collectors will love this little butter dish. It's about 4 1/2" around. It was made in about 1971 or 1972 by the John Jennings Enterprises of La Follette, Tenn. These were made in carnival in Marigold only from a new mold.



## CHERRY & LATTICE



In 1978 Mosser came out with this butter dish 132-B, creamer 132-C, sugar 132-S, and a tumbler 132-T. These were made in purple. It's really a pretty piece.

## CHRYSANTHEMUM



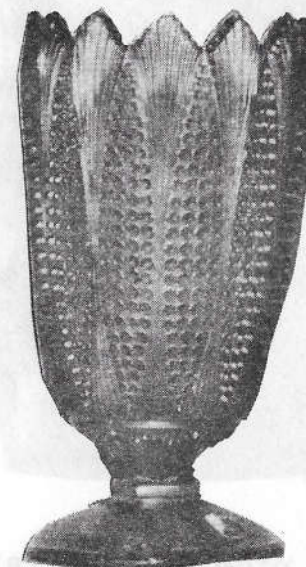
For lack of a better name we will call this the Chrysanthemum Planter. It was made by Fenton Art Glass Co. in Jan. of 1970 in Amethyst. It was No. 8226.

## CHRYSANTHEMUM



Here's a nice one and rather hard to find. It was No. 22C made by Imperial in Sunset Ruby in 1970. The ones we've seen, the glass seemed not as thick as Imperial's other pieces and had a gold finish.

## MUCORN VASE



Imperial made this pretty 9 1/2 in. vase in their Aurora Jewels line in 1970. It is signed with the 1G mark.

This is the only color to this date this vase was made in.

This mold did not belong to Imperial and it was a very difficult one to make so that is probably why it hasn't been made again.



## CORNUCOPIA



A little 3" miniature made in Azure Blue in 1970. Another Imperial piece and their No. 123. Collecting toothpick holders is fun as there are a lot to find and they take up so little space and are less expensive than most pieces.

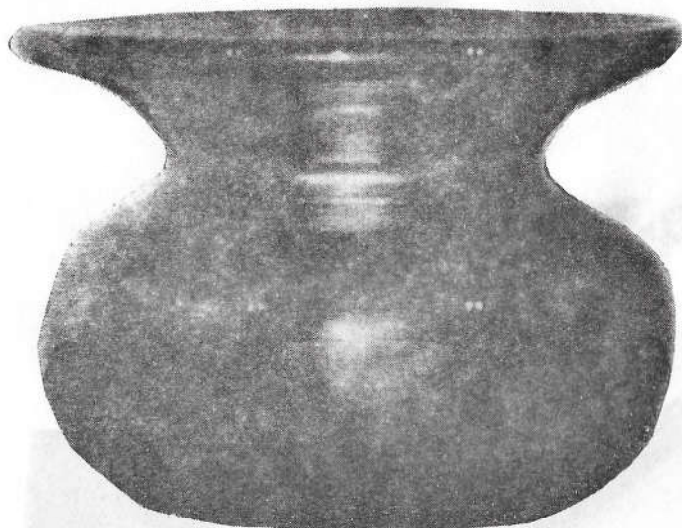
## CRUET



Gibson made only a few pieces in his short time as a glass maker in his own company. I mean a few pieces compared to other companies, as all Gibson Glass was hand made. He owned no molds and was only in business a little over 1 year.

I have seen these cruets in both Green and Cobalt. He could have made other colors but I haven't seen them. Most of his pieces were signed "Gibson Glass, 1976" or "1977".

## CUSPIDORA



This was the second piece in a 5 piece series made by Charlie Gibson for Encore. These were blown pieces so each will be a little different. There were 300 made and numbered in Green. They also had the Gibson name on the outside bottom. These were made in 1976. I've also seen some in Cobalt not numbered and a year or so before the Green came out I bought a beautiful Red one made at Bob St. Clair's plant. Charlie use to work for Bob and Maude. Charlie was in business for himself about a year and gave it up and went into the ministry. He made some beautiful glass and it is very collectible right now. Remember the ad on TV that said, "Look, Mom. I can see myself in this plate!" They had nothing on Charlie as this Cuspidor is like a mirror.

## DAHLIA

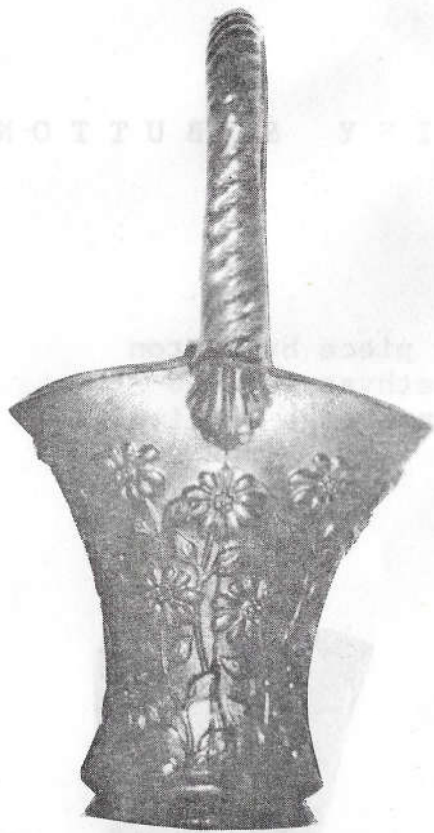


Wright Glass came out with this pattern in about 1977. In comparing the new pitchers with the old I can't find any difference. However, on the new tumblers there are 3 dahlias and on the old there are 4 dahlias. The old water set has sold for \$1,000.00 and a collector can be fooled here real easy.

The one we have is not signed. These water sets were made in White, Ice Blue, and Purple.



# DAISY



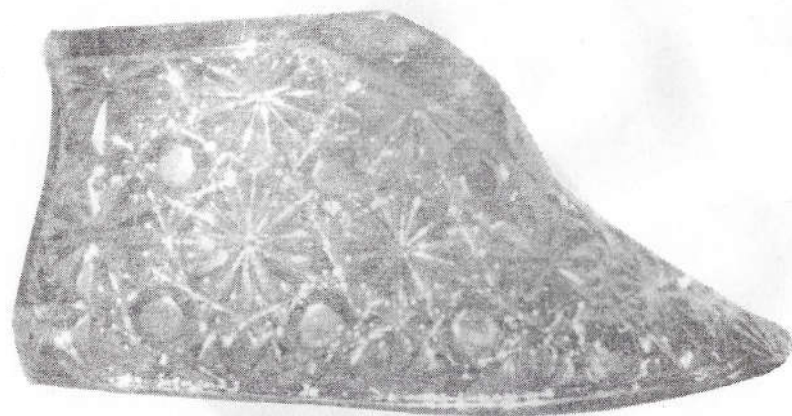
Here's one you don't see too often in the earlier colors. The basket is 9 1/2" tall and was Imperial's No. 40. It was made in Rubigold and Peacock in 1966, Helios in 1967, Azure in 1970, and Amber in 1973. The amber basket was changed to No. 42644.

# DAISY & BUTTON

Another piece by Fenton made in Amethyst in 1970 and also in Orange Carnival in 1972.

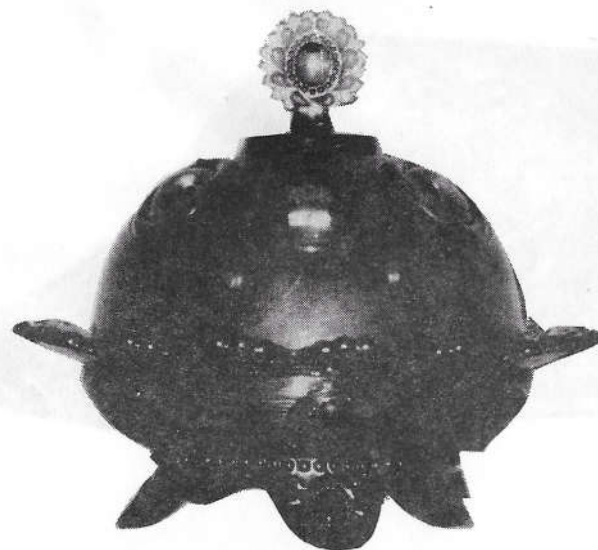


# DAISY & BUTTON



This little bootie was made by Fenton in 1974 in Amethyst. It is signed 0 with a V inside the 0. It was one of 7 pieces made for the Olde Virginia line. It was their No. 1994. The Olde Virginia line also had a slipper and top hat in this pattern.

# DEWEY

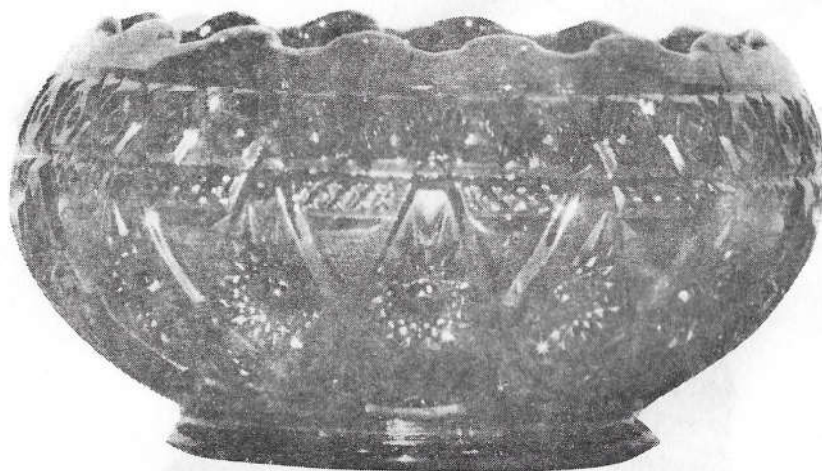


Here is a covered butter dish that is hard to find. It was signed IG and made by Imperial in 1966 in Rubigold and Peacock.

See how these things just disappeared in just these few short years. This will probably be one of the rarities in the future.



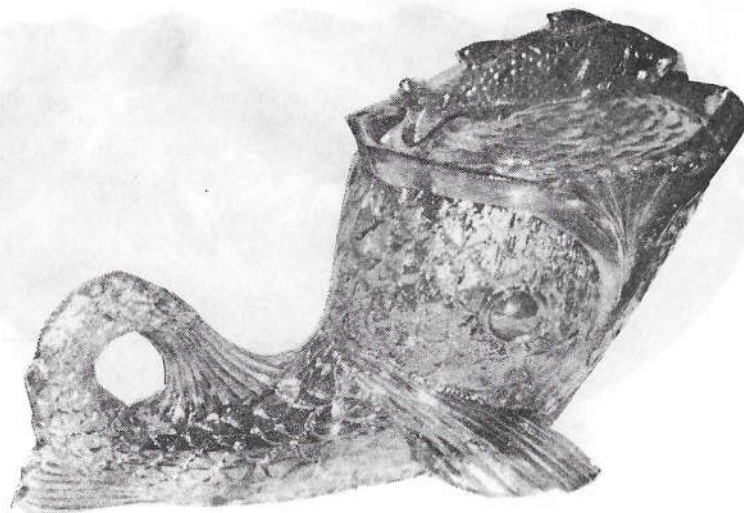
## DIAMOND LACE



Another Imperial piece. It was No. 434N. This 7" bowl was made in Sunset Ruby. It is a very attractive bowl.

This was also made in Pink marked LIG.

## COVERED DOLPHIN



This covered Dolphin was made in the 1965 to 1968 era by Joe St. Clair. It was made in Cobalt, Green, White, and Carmel iridized. It's possible it was made in other colors but it's not confirmed at this time.

# DRAMA



This vase I have heard called the masque vase and the devil vase, besides the name of Drama. It was made in Rubigold and Peacock in 1966 and in Azure Blue in 1970. It was Imperial's No. 486. It's a very good piece to own as it's definitely different. The picture isn't too clear but just look for the devil and you'll know what it is.

# EAGLE CANDY DISH

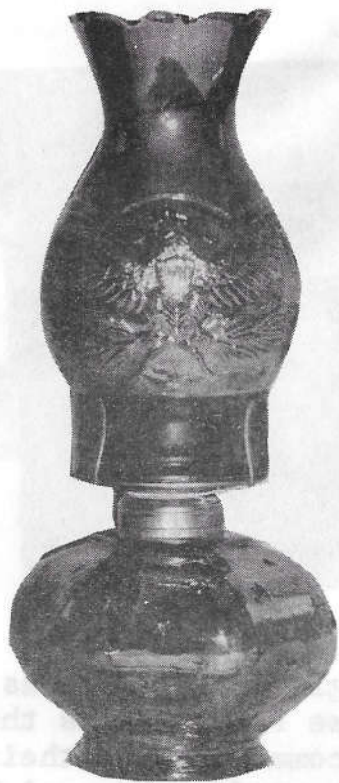


Another piece in the L.E. Smith Bicentennial collection made in 1975 for the 1976 celebration. It was made in Cobalt. This is their 6" candy box No. 4564.

Smith called this color Federal Blue.



## EAGLE LAMP



This was made in 1975 by L.E. Smith Glass Co. as part of their centennial collection. It was made in Cobalt Blue but a little lighter than the usual Cobalt. There were six other pieces in this line, a 5 1/4" nappy, 9" ashtray, 8 1/2" candy box, 6" candy box, another 8 1/2" candy box and an 11 oz. goblet. All have the Federal Eagle. All these were discontinued in 1976.

Smith called this color Federal Blue.

## EAGLE & STAR



The Eagle & Star mug was made for Joe and Rose Presznick as their second souvenir, commemorating their Carnival museum. It reads, "Presznick's Carnival Glass Museum-Lodi, Ohio". It was made in Peacock and Rubigold in 1969 and only 463 were made. Again in 1972, 450 were made in Sapphire Blue for the Presznicks.

Rose Presznick passed away in 1978 leaving behind all her books and research material on both old and new Carnival for all of us to benefit by.

Any piece made in limited numbers like this one has got to be a good investment.

## FIELD FLOWER



The pitcher shown here is in Sunset Ruby. It was made by Imperial in 1970. The tumblers match the pitcher. In Rose Presznicks books I believe she called it "Sunflower and Wheat" water set. Some of the pieces look Amberina but if you look long enough you'll find a pure red set. They are signed LG on the bottom. In 1978 Imperial made this set again for Levay Glass in Ice Blue. It was reported that only 190 sets were made in this color and also signed LG. They are also signed and numbered by Levay.

## FISH



The fish paperweight was made in 1970 by Fenton Art Glass. It's a very beautiful piece if the iridescence is good. It was made in Amethyst.

Again in 1978 this fish paperweight was made by Fenton in Green for the Liberty Glass House in Beloit, Wisconsin. This was a limited edition of 440 pieces.



## FLORAL PANEL



Made in 1966 by Imperial, this attractive 9 1/2" vase came in both Rubigold and Peacock. It was Imperial's No. 480. We have seen some that flare out at the top and some that turn in.

## FLUTE



The Flute water set was made for Levay Glass Co. in 1976. No. 24/6771 was made in Electric Blue. This was a limited edition of 100. The pitcher is 8" and the tumblers 4".

# FOUR - SEVENTY - FOUR



This water set was made in 1977 from the old original mold. It was made for Joan Westerfeld of Kansas City, Kansas in a beautiful blue called Ultra Blue. Only 250 were made. They are all signed IG. On the bottom of the pitchers and the tumblers you will find a peanut and the words "A New Spirit '77". This was a phrase President Jimmy Carter used many times. Please do not confuse this water set with the Mayflower pattern. See Mayflower else where in this book.

The bottom plates are owned by Joan and therefore will never be reproduced in Ultra Blue.

# FROLICKING BEARS



Couldn't resist putting my Frolicking Bears water set in book one. I was never able to buy an old one so our daughter Patty who does some of our Encore covers and the front page of this book painted the bears on a green Gibson pitcher. There would only be one of a kind of this set and it will stay in our family but just couldn't resist showing it to you.



# GEOMETRIC



There will be a little confusion here as this No. 27/496 listed in Presznick's book was called a 7" grape bowl. It was made in Aurora Jewels in 1970 and again in Pink in 1978. Another Imperial piece, also came in White. This also could be called Hattie from the old carnival name except there's no flower in the bottom.

# GOD AND HOME

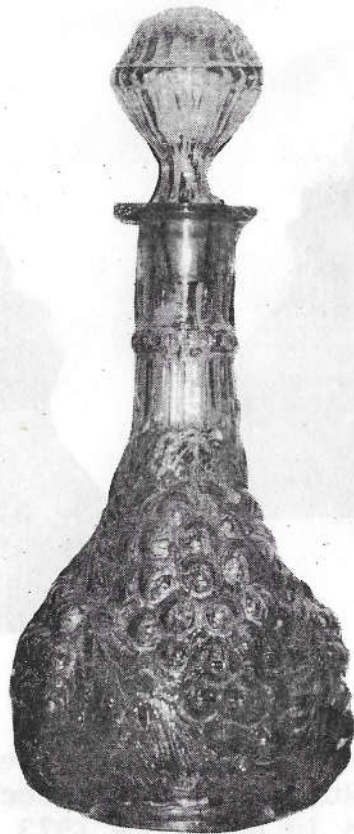


From the original old molds came this water set made in 1975 by Westmoreland for the L.G. Wright Co. These were made in Amethyst and most of them carry the W in a circle trademark.

In old Carnival this was only made in Cobalt and brings a very high price.

In 1976 this was made again by Westmoreland for Levay Glass but this time in Ice Blue and only 125 were made.

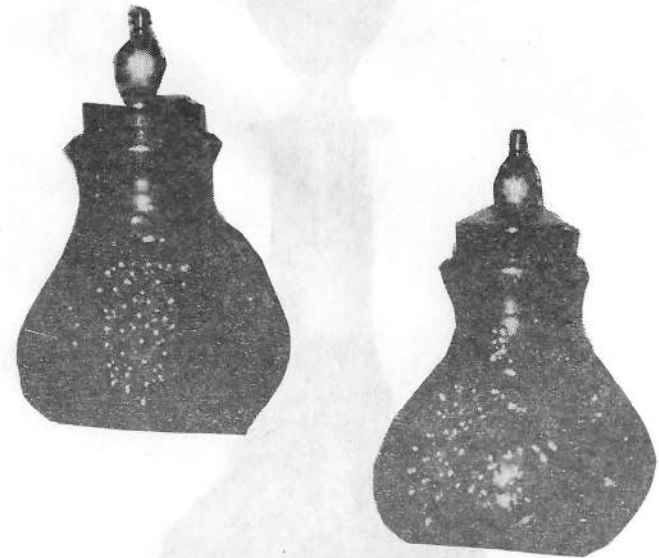
# GRAPE



This is a hard one to tell the difference between the old and the new. It was made by Imperial in Rubigold and in Peacock in 1966, Azure Blue in 1970 and Helios in 1971. This decanter and stopper was No. 163. The matching 3 oz. wines were No. 473.

This set in Helios and Azure Blue are quite popular and carry a hefty price tag.

# GRAPE



Imperial's salt and pepper set made in Rubigold and Peacock in 1966 and again in Amber in 1973 to 1977. The Peacock set seems the hardest to find. These were No. 96.



## GRAPE



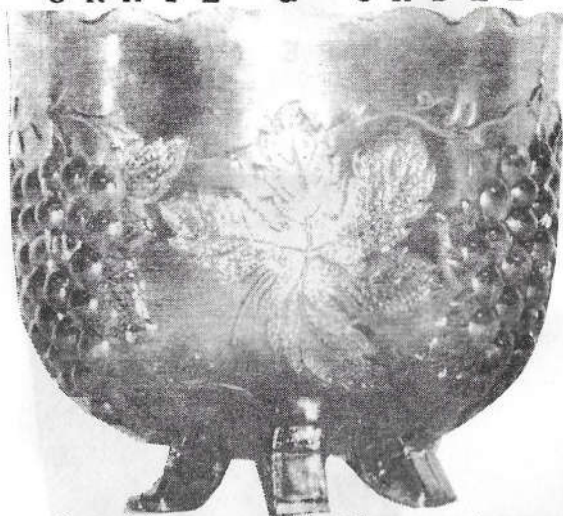
Imperial had so many pieces in this Grape pattern the camera just didn't want to stop. This footed creamer and sugar, No. 831, were made in Rubigold and Peacock in 1966.

## GRAPE



Imperial's No. 473. This 3 pint water pitcher and 10 oz. tumblers were made in Rubigold and Peacock in 1966, Helios in 1967, White in 1972-75, and Amber 1973-77. The Imperial Grape pattern has been reproduced in many different pieces so again be sure of what you're buying. This set in Helios is rare as less of these were made than the Azure Tiger Lily.

## GRAPE & CABLE



Here's the one all the controversy was about. This is one of the pieces American Carnival Glass Association went to court to stop the use of the N trademark which belongs to them. This nut bowl and a butter dish were made in about 1975 or 1976 with the old mark on them. However, the circle is not complete around the N but you would have to look close to see it. They were made in Amber & Ice Blue. It was made for John Jennings of Tenn. by Mosser Glass.

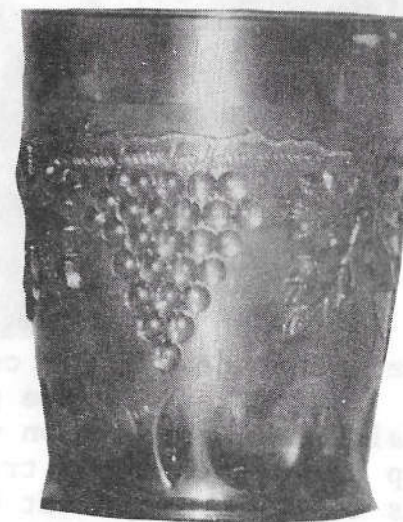
To the old carnival collectors, be sure of what you are buying if you're paying a big price with these two reproduced pieces.

The butter dish top looks like the old mold but the bottom plate is completely different. On the old bottom there were beads around the edge where the new one was plain.

Since this reproduction Mosser has made the butter dish again in Cobalt carnival but without the N trademark, so collectors, TAKE HEED!

## GRAPE & CABLE

### THUMBPRINT



This was made by Joe St. Clair around 1973-74 in Red, Cobalt, and White. I've also seen one with a pale Amethyst tint. It could have been made in Amethyst I suppose but I haven't seen it. Some are signed J. ST. C. and another I have just has a small circle in the inside bottom and others have no mark at all.



## GRAPEVINE & LATTICE



This was made for the L.G. Wright Glass Co. in Amethyst in the early part of 1978. It was No. 12-2 and a tankard water set. Wrights signature is a W with a line under it and enclosed in a circle.

## GRAPEVINE & LATTICE HARVEST



The water pitchers were 10 1/2" high and they had both 9 oz. goblets and 14 oz. tall glasses and 5 oz. glasses. They came in Gold, Blue, and Lime. Made by Indiana Glass Co. for several years. I only can find the 5 oz. glasses pictured in the Gold color.

## "HIGH HOB" (NAIL)



In 1975 Westmoreland made this water set, No. 500, plus a covered sugar, creamer, spooner, and butter dish in Purple and Green, Opalescent, Butterscotch for Levay Glass.

In 1976 the water set was made in Blue, Opalescent and again in 1977 in Pink and iridized Purple slag.

## HOACGA - GOOD LUCK



The pitcher was the first souvenir made for the Heart of America Carnival Glass Association. There were approximately 500 made sold only to club members. These are in Red made by Indiana Glass Co. These have the horseshoe and whip, and the words "Good Luck" and 1974 on the sides. The lower part has the N basket-weave pattern.

The tumbler matches with the "Good Luck", dated on the sides 1974 and also with the same horseshoe pattern but in the inside bottom of the tumbler you will find the words "Souvenir of 1975". The tumbler was the second souvenir for HOACGA.



# H O B N A I L



This is one of the prettiest sets I've seen in purple. It was made in 1977 by Fenton for Levay Glass. It had both goblets and tumblers to match.

# H O B N A I L



This hobnail juice set was made by Fenton for Levay Glass in about 1976. It was made in Vaseline Opal or Canary Yellow. Pitcher 3965 V01, 5 1/2 X 6", tumbler 3945 V01, 3 1/2".

This was hand blown with an applied handle.

## HOBSTAR VARIENT



This water set was made in many colors in the 1970's by the L.E. Smith Glass Co. The pitcher is 8 1/2" tall and the tumblers are 4 1/2" tall. It was made in Amethyst, Gold, Amber, Dark Green, and White.

In 1975-76 Smith again made this water set for Levay Glass in Ice Blue and Ice Green.

The pieces were all marked with the S in a circle.

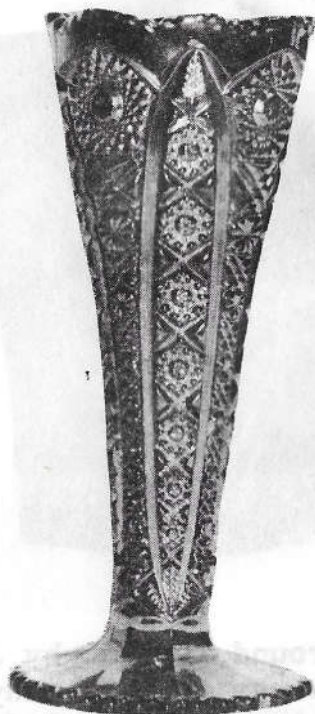
## HOLLY



Here's a very attractive little pitcher made by Joe St. Clair in Aqua Marine, Ice Blue, and iridized Chocolate. This started out as a mug and Joe said they changed the ring on it and turned it into a pitcher. Joe said he did not make a sugar bowl at the same time. He said he did make a sugar bowl in the Holly pattern but he had never thought about them being a set as the sugar bowl came later.



# IMPERIAL LACE



This was Imperial's 8" vase, No. 505 made in Sunset Ruby in 1970.

This pattern also shows up on the No. 505 toothpick holders made in Rubi-gold, Peacock, Amber and Pink.

# INVERTED FAN & FEATHER



Made around 1963-64 by Joe St. Clair. This tumbler was made in many colors, Marigold, White, Cobalt, Red, Amberina, Amber, and Ice Blue. Some of the earlier pieces were not signed but the later ones were.

## INVERTED PEACOCK



This miniature water set was the 1st souvenir at the Encore Convention in 1977. It is green and very pretty. Russ Vogel song of Summit Art Glass designed this piece and had the mold made. Mosser Glass made it. There were 500 sets made but a few were broken in shipping.

On the bottom you will find the words "Carnival Glass Encore, 1977, Kansas City, Missouri, D.T.". D.T. stands for Dorothy Taylor. On the inside bottom you will find a V in a circle which is Vogel songs signature.

The pitcher measures 3 1/4 inches tall.

## INVERTED PEACOCK (continued)

These were sold out within about 6 months and will be a very good souvenir piece to find.

In about December of 1977 Mosser made this set in Ice Blue for Vogel song. It does not have Encore plate on the bottom. About 550 of these were made. Most of these were sold to Richard Jaskie of Wisconsin for resale.

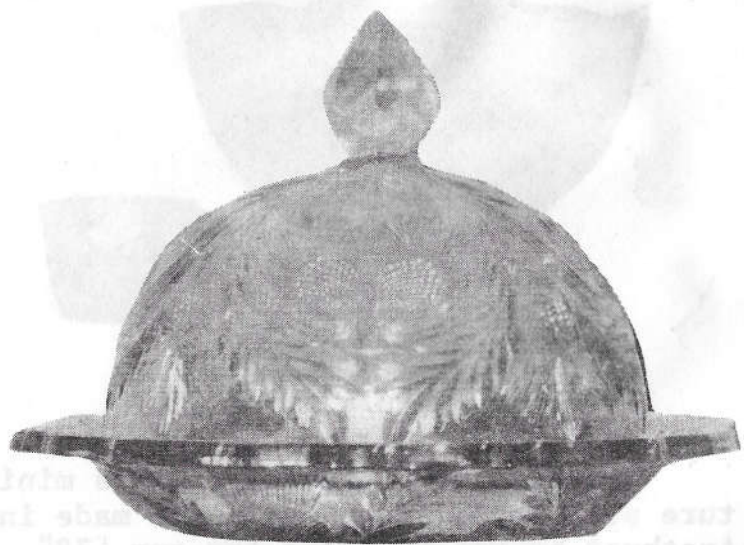
## INVERTED STRAWBERRY



Made in Sapphire Blue in 1972 by Guernsey Glass. Very few of these were made in this color. There were approximately 24-36 pitchers and 100 tumblers. This water set was made in Cobalt.



## INVERTED THISTLE



This butter dish was made by Mosser in Ice Blue. A very beautiful butter dish.

## INVERTED TROUT



Encore's 1978 souvenir! This miniature punch bowl and 6 cups were made in Amethyst by Mosser Glass for our "78" Convention. The mold belongs to Vogel-song but it can never be reproduced with our bottom plate which reads "Carnival Glass Encore", K.C., Mo.1978. I understand it has been made again in another color, but without the bottom plate it is not a souvenir piece.

In the final count there were 534 made with 74 broken in shipping. This leaves 460 out there somewhere. This will be one of the sought after pieces in the future, as there were so few made.

## IRIS



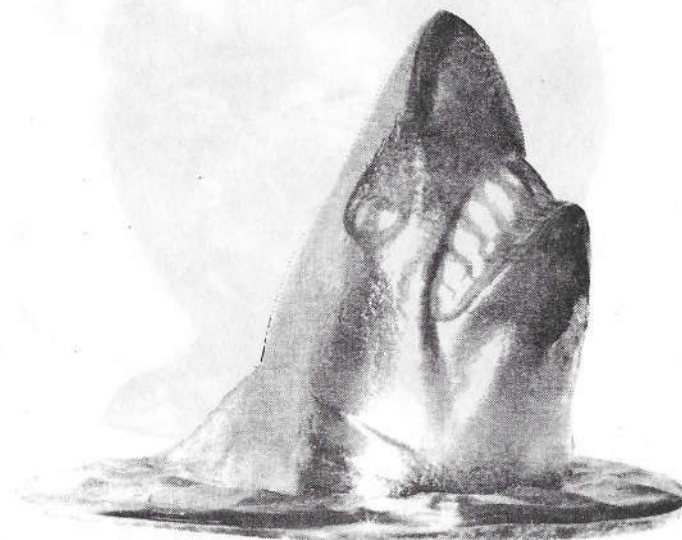
This was made by Imperial as a 3 toe nappy or rose bowl, number 27/1155N in Cobalt and White.

It was also made with a place for a candle inside, 27/1155, in Cobalt and White.

There was also a 10" 3 toed bowl made in the same colors.

The pattern doesn't look like Iris to me but being it was already called this we will still refer to it as Iris.

## JAWS



This paperweight was made by Wheatoncraft in a medium blue. It is a solid piece of glass and rather heavy for its size. Anyone who saw the movie "Jaws" will appreciate this piece. I have seen this piece mounted in a picture frame with black velvet background and displayed in a den and it was very attractive.



# K I T E   &   P A N E L



There was never a pitcher made for this goblet. It was made in Aurora Jewels in 1970 by Imperial and was numbered 27/9.

# L A   B E L L A   R O S E



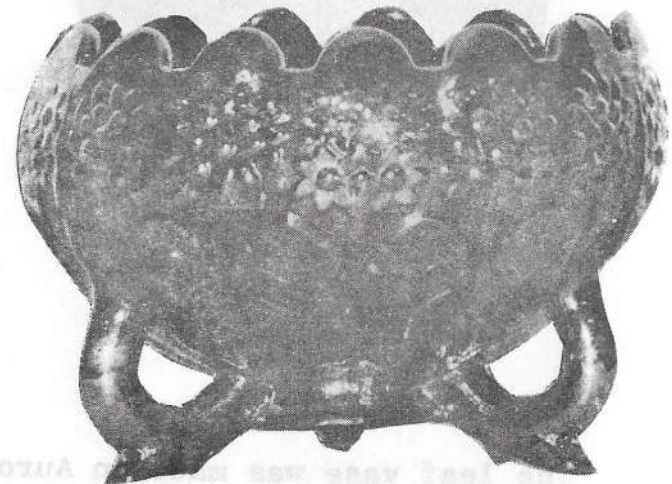
This is a very attractive 6 1/4" vase. It was made by Imperial in 1966. It was their No. 181. Rubigold and Peacock are the only colors we've seen this in. Our reference material indicates that this would have been the Rose Show pattern in old Carnival.

# LEAF



The leaf vase was made in Aurora Jewels in 1970 by Imperial. It's a 6" vase No. 27/7520. They are signed 1G.

# LEAF & ORANGE TREE



No. 8223 by Fenton in July of 1970 in Amethyst. This is a very attractive 3-toed bowl.

It was also made in Orange in July of 1971.



## LION BOX & COVER

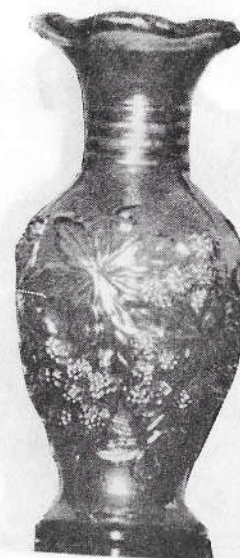


Another Imperial goodie made in 1967 in both Rubigold and Peacock. It was probably used for a candy dish. The survey we ran in 1976 showed it to be one of the hardest to find. If you've got it, "Flaunt it". We would consider this one of the rarer pieces.

Again in 1978 this was made in Electric Blue for Levay Glass. This time it has a different base. Levay's base does not have the lacy edge. It has diamond shapes and basket weave.

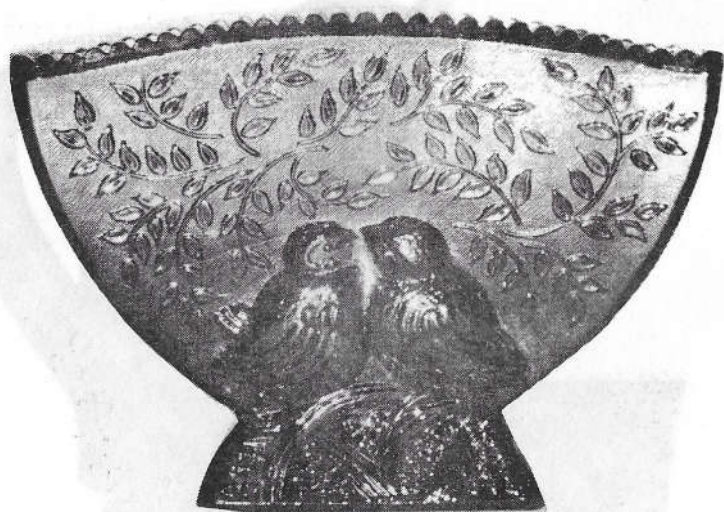
Five hundred of these were made for Levay.

## LOGANBERRY



This little 6 1/2" vase was made by Imperial in Aurora Jewels in 1970, White in 1972-75, and Pink in 1978. It was No. 27/109

## LOVEBIRDS



Mr. Frank Fenton of Fenton Art Glass said this would someday be a rare one. It was only in their line a year in Carnival glass. It was made in January of 1974 in Amethyst.

A paperweight in this pattern was also made in 1976 in Ruby and also in Independence Blue.

## LUSTRE ROSE



In 1965 or 1966 Imperial made this water set in Rubigold and Peacock. It was signed I.G.

The pitcher is 3 pint and the tumbler is 9 oz.



## MAPLE LEAF



This pattern showed up in the 1974 supplement of the L.G. Wright catalog. It was made in Amethyst and was made from the original molds. At that time five pieces were made, including a water pitcher, tumbler, spooner, covered sugar, and a covered butter. They are signed with a W in a circle. It's possible there could be some out that didn't get signed. These were made by Fenton for L.G. Wright. Reportedly only about 50 pitchers were made. Considered one of the rarer water sets, was made in old carnival also.

## MARY AND JESUS



These wall plaques were made by Wheaton in the 1970's sometime. They were made in Amber and Blue ( a little darker than Ice Blue). They are approximately 3 X 4 1/2" with a nail hole in the top for hanging.

## MAYFLOWER



Here is one of the confusing ones. This is always being confused with the 474 pattern. You will find 474 elsewhere in this book so you can compare.

Mayflower was made by Imperial in Rubigold and Peacock in 1966. It was a 3 pint pitcher with a 9 ounce tumbler.

## MOON & STAR



No. 72/6242 made for Levay Glass in Persimmon, limited to 500 sets. Made in White limited to 300 sets and Sapphire Blue limited to 100 sets. These water pitchers are 8 1/2" tall and the tumblers are 4 1/2". These were made around 1977.

Many other pieces were made in this pattern like a covered compote and the Epergne in Ice Blue.



## OCTAGON VARIET

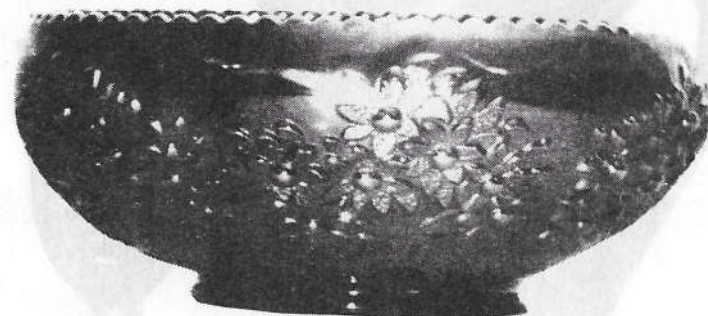


In about 1974 Indiana Glass came out with their Heirloom series. This water set was made in Sunset and in Amethyst. The Sunset runs from red to yellow, or is definitely amberina.

It is one of the few water sets to have 8 oz. goblets as well as 9 oz. tumblers to match.

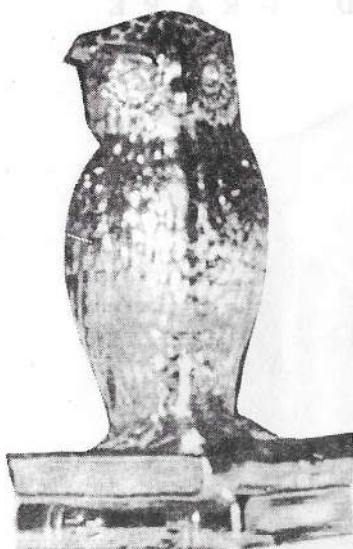
Many other pieces were made in this pattern in these colors.

## ORANGE TREE & CHERRY



This piece has a pattern both inside and out. On the outside you will find Orange Tree and on the inside you will find clusters of cherries. Made by Fenton in January of 1972 in Amethyst. It was made both in a cupped and a crimped bowl.

## OWL



The Degenhart owl paperweight has a lot of interesting stories behind it. Their first owls in Cobalt were iridized by Joe St. Clair. About Jan. 1973 or 1974 Joe St. Clair went to the Crystal Art Glass factory to iridize a batch of pigeon blood red owls for Mrs. Degenhart. Joe said it was the kind of weather people

would come on dog sleds as word spread about what was going on at the factory. People came from all over to purchase the newly iridized red owls. Each dealer, I'm told, was only allowed to buy two at the wholesale price of \$50.00 each. I can imagine how exciting that day must have been at that factory.

Since then Westmoreland has made some with rhinestone eyes even. Gary Levay has had some made for him by Westmoreland in 1978 in Electric Blue.

I have a purple one with a big D on the bottom but not in a heart. I understand Terry Crider of Ohio iridized some of these so no telling how many different colors you might find this in.

Since Mrs. Degenhart passed away recently I understand her signed pieces have skyrocketed.

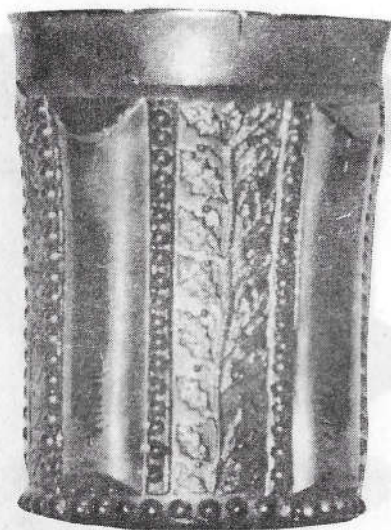
## PANELED GRAPE



Made for Levay Glass in Electric Blue, Opal in 1976, again in Lime Green in 1977 and in Cobalt in 1978.



# PANELED HOLLY



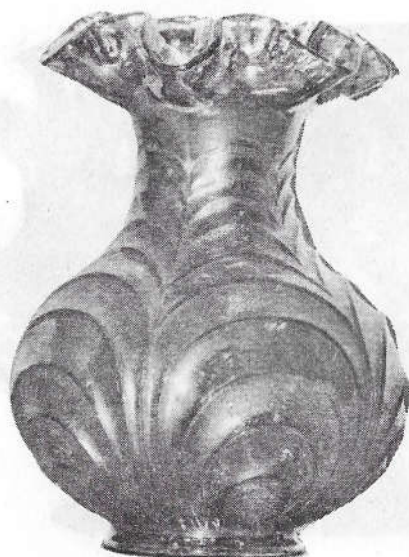
Another Joe St. Clair tumbler made around 1968 in White, Amberina, Marigold, Ice Blue, Cobalt and Aqua Marine. The earlier ones probably weren't signed.

# PEACOCK CHILDS MUG



This was made by Degenhart in many different colors. Any one of these colors could have been iridized by Crider or someone else. I know it was made in at least Cobalt and Pink.

## PEACOCK TAIL



For the lack of a better name we will call this Peacock Tail. It was Fentons No. 9155.

It's an 8" vase and was made in 1975 and 1976 in Amethyst, Red and Blue.

These are very attractive vases and will brighten up any home if you are able to find one.

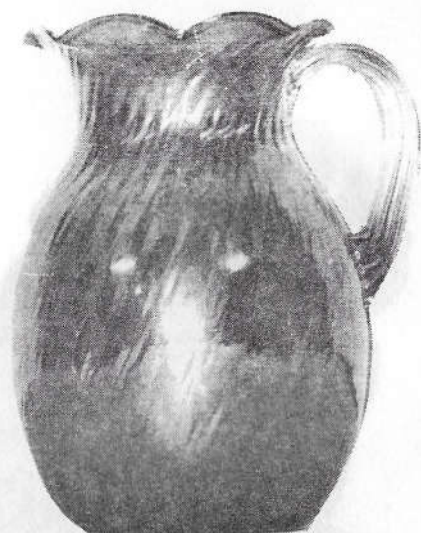
## PET MUG



This cute little miniature mug was made by Mosser probably in several colors. I have only seen them in Cobalt and Marigold. There is a little dog on one side sitting on a drum and a kitten on the other in a basket.



## PILGRIM



This is one pitcher out of several sizes and shapes made by Pilgrim Glass Co. in Huntington, W. Va. between 1968 and 1973. They were in a series C500 and C525. These pitchers were blown pieces. The base color was blue and the iridescence was gold.

Pilgrim Glass just told me they made some sample pieces in crystal that were iridized but I haven't found out exactly what patterns yet. They also made what they called a tiffany vase that was iridized as a sample but didn't go into production with either of these.

The vase, 12" to 14", was in green with red and yellow stripes like a candy cane with a satin type finish. These were tried out in about 1976.

## RABBIT



Fenton is responsible for this rabbit made in Amethyst in January of 1971. Again I find no signature but I could have missed it. They did all come out with paper labels when they were first issued.

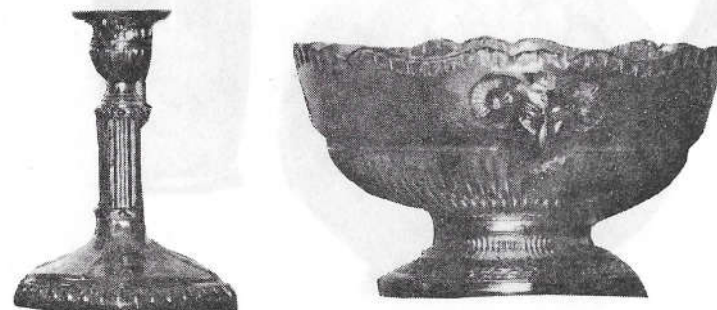
This rabbit was made again in 1977 by Fenton for Levay in green. These are etched Levay 1977 and numbered 1 through approximately 276.

## RAMBLER ROSE



Again from the old original molds this water set was made in Amethyst. It appeared in the L.G. Wright catalog in January 1977. Rambler Rose was made in old carnival so be sure of what you are buying.

## RAM'S HEAD



This pattern was made in 1970 by Imperial in Aurora Jewels. The bowl is No. 27/3525 and measures 9". The 6" candle holders are No. 27/3531. I haven't seen this in any other color since.



## ROBIN



This is another happy pattern. Can't you just see this Robin sitting on a branch outside your kitchen window saying "Good morning"?

This is an Imperial piece. The following pieces are known to have been made in this pattern and these colors to date:

1970	Cobalt water set	signed IG
1970	White water set	signed IG
1977	Green water set	made for E. Ward Russell
1978	Red water set	made for E. Ward Russell
1970	Red Robin Mug	signed IG
1978	Pink Robin Mug	

All the pieces were signed IG except for the Pink which was signed LIG for Lenox Imperial Glass, the new owners.

## ROOSTER



Another piece made by Imperial in 1970. This rooster match holder was made in Azure Blue. It was Imperial's number 459. This color was discontinued in 1970 and we haven't seen the match holder appear again. A hard one to find.

## ROSE



These 3 1/2" candle holders were made by Imperial in several colors. They were No. 160. The Rubigold and Peacock were 1966, Amber 1973-77, White 1972-75 and Pink in 1978.

Many pieces were made in the Rose pattern that we will cover in later editions.

## ROSE COMPOTE



This compote was made in Amethyst in January of 1973 by the Fenton Art Glass Co. It was No. 9222. Rather hard to find.



## SHRINE FEZ



This toothpick holder was made for some people in Peru, Indiana in about 1972. The mold belonged to them and they had Joe St. Clair make it for them. Joe said he couldn't remember for sure but he thought about 5000 were made in Red and about half of these were iridized. It's a very attractive piece and a little hard to find right now.

## STORK & RUSHES

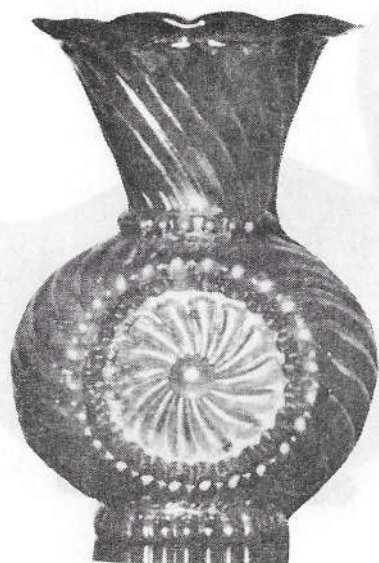


An old pattern made from the original molds with the exception of the sugar cover. The water set was made in Mari-gold and Amethyst in 1975 for the L.G. Wright Glass Co. Some are signed W and some could be out that aren't signed.

The pitcher was 78-1 and the tumblers 78-6. This pattern was also made in a covered sugar 78-4, creamer 78-5, spooner 78-3, large berry bowl 78-2, and sauce dishes 78-7 in the same colors at the same time.

Be sure you know what you are buying in this pattern if you are an old collector.

# SUNDIAL



Another vase made by Imperial in 1970 in Aurora Jewels. This is a 5" vase No. 27/457. We have also heard this vase referred to as Pinwheel. Aurora Jewels is the only color we've seen this made in.

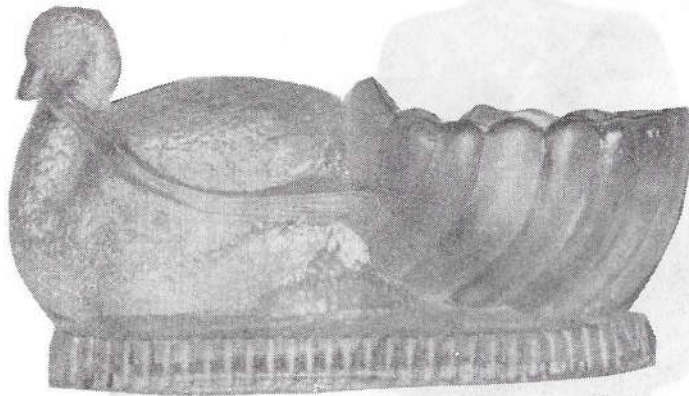
# SWAN



This little master salt, No. 27/47, showed up in several colors. It was made by Imperial, Sunset Ruby and Aurora Jewels in 1970, again in White in 1972-75 and Amber from 1973-77, Pink in 1978. It's shown as a 4 1/2" salt dip.



# SWAN SALT DIP



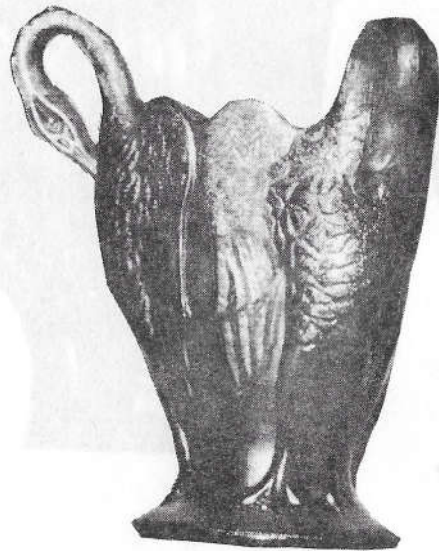
This is an unusual little salt dip and is really kind of cute. Joe St. Clair made this from 1968 to 1970, approximately. It was made in White, Cobalt, and iridized Carmel.

# THREE - IN - ONE



This covered jar was made in Azure Blue in 1970 by Imperial. This is a hard one to find also. The toothpick holders in this pattern were made in Azure and Helios. These carry the No. 1 on Imperial's paper stickers.

### THREE SWAN



Imperial made this vase in Aurora Jewels in 1970. It was No. 27/7526. It has not been made again by Imperial. This was a very hard piece to make because of the necks and probably there was a lot of breakage. This mold does not belong to Imperial.

### TIARA



This water set came originally with 4 stemmed goblets. It was made by Indiana Glass and sold exclusively at house parties in 1971 and 1972. It was never available in the stores. Due to the limited distribution we would consider this a rare one. It was made in Green only.



## TIGER LILY



One of the most sought after water sets in new carnival in Azure Blue. It was made in 1969 by Imperial. It's a very attractive water set and brings a high price. It's No. 484. The Azure Blue one is rather rare.

In 1978 Levay Glass had this set made in Marigold and signed with the LG mark.

Again in 1978 Imperial made this set in Pink but this one is signed LG for Lenox Imperial Glass. This was also made in White in 1977 for Levay Glass.

## TOMMY HAWK

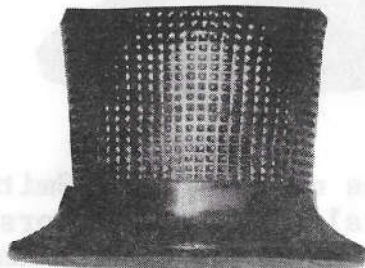


No. 4 in the Gibson series made in 1976 for Encore. Again only 300 were made signed and numbered. These were made in Cobalt and the iridescence is beautiful.

I have seen these also mounted in a picture frame with a velvet background and hung on a wall. It made quite an eye catcher.

COVERED TURKEY

TOP HAT



This little toothpick holder was made by Imperial in Aurora Jewels in 1970.

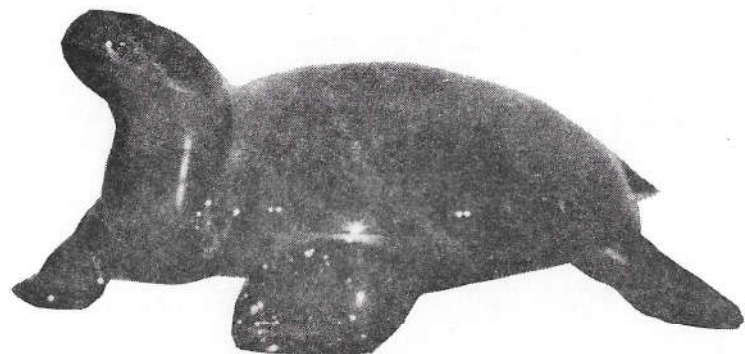
COVERED TURKEY



This was made by L.E. Smith Glass Co. in several different colors including White 207-L, Amethyst 207-C, Amber 207-A, Green 207-G, and Amberina 207-R.



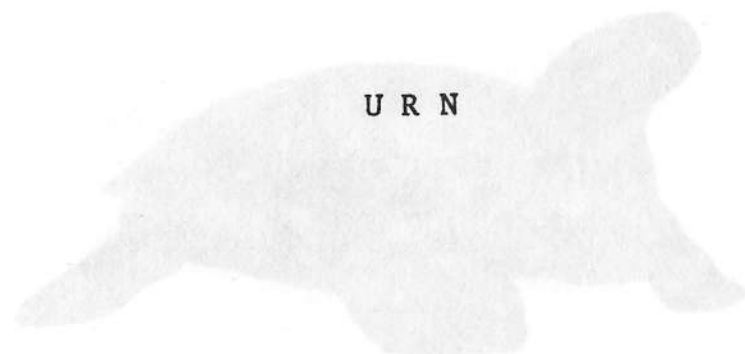
# TURTLE



A hand blown piece made by Charlie Gibson in the short time he was in business for himself around 1976. This one is in Cobalt and I'm sure there weren't a whole lot of these made. They could have been made in another color but I haven't seen them. Try putting one of these in your aquarium, if you have one.

# TURTLE

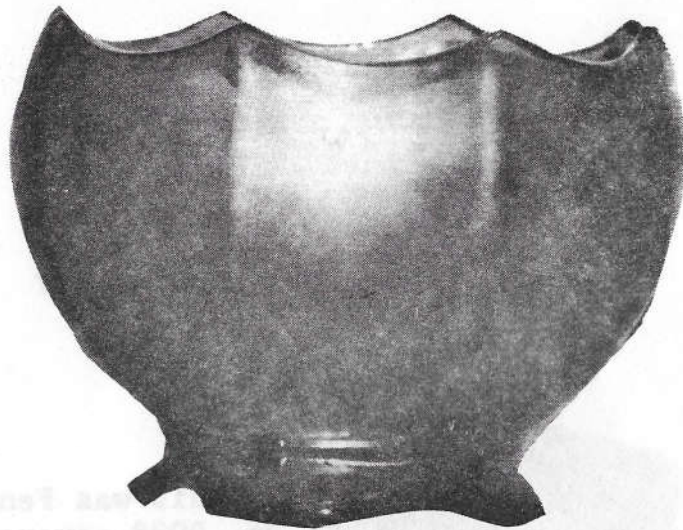
## URN



The urn was also made by Imperial in Azure Blue in 1970.



W I D E   P A N E L



This rose bowl has been called the smooth rose bowl. It has no pattern inside or out. It reminds me of stretch glass.

It is a 5 1/2 inch bowl made in Aurora Jewels in 1970 by Imperial.

W I L D   S T R A W B E R R Y



This was Fentons No. 9088 covered candy box made in Amethyst in January, 1970 and in Orange in January, 1972.



## WINDMILL

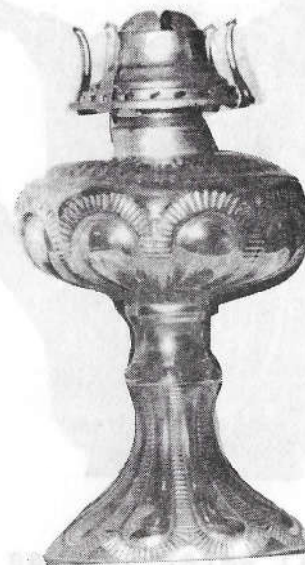


The Windmill water set was made in 1966 in Rubigold and Peacock. It was Imperial's No. 239. It was made again in Rubigold with frosty sueded panels in Jan. 1969.

The pitcher was No. 239/S and the tumbler 514/S. These were all 3 pint pitchers with 9 ounce tumblers. The suede water set is still being made at this printing.

The Windmill pattern was made in a 9 1/2" plate 27/7D and a 9" oval plate or dresser tray, 27/58 in Aurora Jewels in 1970. Also in 1978 a bowl was made in this pattern in Pink.

## ZIPPER LOOP

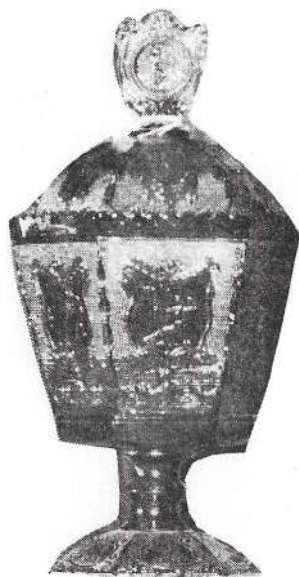


In 1967 Imperial came out with this lamp. It is an oil lamp and was their No. 201. It measures 17" tall without the chimney.

It was made in both Rubigold and Peacock. It is almost impossible to tell the difference between it and the old one. You will find the IG mark on the inside of the base near the bottom. This lamp did come with a clear chimney. This would be one of the rare ones.



## Z O D I A C



The covered candy box was another Imperial piece No. 619, made in Azure Blue in 1970. It is a very unusual design and would be an asset in any collection. It was also made in Rubigold, Peacock, and White.

## " Carnival Glass Encore "

A Publication On "NEW" Carnival Glass.  
Published 6 times a year. Contains up to date information on:

New Factory issues with pictures

Information on all thats happening  
in the field

Conventions

Educational Articles

News from "you all"

Yearly Souvenirs

News from Collectors Clubs

Surveys on scarce and hard to find  
items

Surveys on current prices

Wants

For Sales

Jokes

This is all News you can use in your hobby

Write for Subscription rates:

P.O. Box 11734  
Kansas City, Missouri  
64138