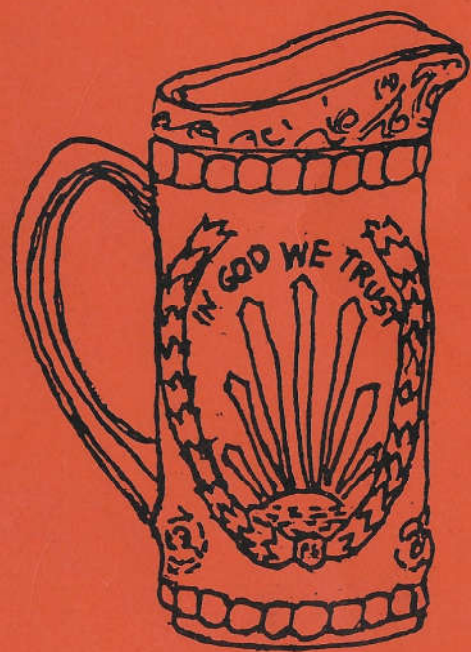


Encore By Dorothy



Book III^{by} Dorothy Taylor

"ENCORE" Means to perform again!

Carnival Glass has made its Encore.

To keep from confusing you, "Encore by Dorothy" is to be several books showing pictures, numbers, and colors of our new glass.

"CARNIVAL GLASS ENCORE" is a publication on new and reproduced carnival glass which is published every other month. It is a subscription publication.

Information on either of these can be obtained by writing the author.

Dorothy Taylor
P.O. Box 11734
Kansas City, Missouri
64138

"Encore by Dorothy" Book I

"Encore by Dorothy" Book II

"Encore by Dorothy" Book III

Available from the Author at the above address.

Second Printing 1990

I N T R O D U C T I O N

In the interest of the hobby of New Carnival Glass collecting we have attempted to put together our third book. We are by no means experts on this. The main reason for these books is to try to put together factory numbers with names so people will know what to call them.

We have received many letters asking what you call a certain number so decided to put the names and numbers with the pictures. Some of the pieces were not named. We tried to stick with the known names and the others we called what we thought was reasonable. In the back of this book you will find several blank sheets for notes. As errors, omissions and name corrections are reported to us we will publish them in the next issue of Encore so you can keep your books up to date. Although every effort has been made to be correct, our research material has come from several different sources which may not always agree. Any help will be gratefully received and credit given when published in Encore.

Many companies have reproduced our old carnival glass from the original old molds. In the past few years they have also made many pieces that were never made in carnival before. In putting this book together it is my hope that it will help the collectors of old carnival to know what has been reproduced as well as the new collectors who are trying to collect the new carnival put names and companies with their collection.

It wasn't too many years ago that a lot of us considered new carnival a threat to our old collections. As an old collector, I remember carrying my Hartung and Presznick books with me wherever I went. We would get out our books and study each piece before we bought it to be sure it wasn't new. If it were new we would turn our noses up and go on. That's what you could call an ostrich with its head in the sand. If we had only bought the pieces then at the prices then how happy I would be now.

New carnival has become so popular and there are thousands of collectors around the country who collect the new carnival. We have learned to love the new pieces as well as the old. We started buying them for comparison and first thing you know we were hooked.

We know many collectors who have their homes filled with this new glass. They have it displayed in china cabinets and every other available spot. They are just as proud of it as the old collector is of his old carnival.

I might add here that the new carnival has turned out to be a terrific investment for many already and think of the years left for that investment to grow. It has many years left before it will hit its peak. One thing about it, a collector doesn't have to pay thousands of dollars now for a rarity in new carnival but give it another few years and see what you will have to pay. Have you tried to go to the stores and shop

and find new carnival lately? It's harder to find than old carnival right now.

WHAT TO COLLECT

First of all, collect for what you like, what looks pretty in your home, and what you can be proud of. The investment will take care of itself in the years ahead. It is our opinion that the souvenirs and limited editions are good (providing they are limited). These are made in far smaller lots than the regular factory lines.

The early pieces with the IG (Imperial Glass) are very much in demand now as well as Fenton's earlier pieces.

Also, when a company goes out of business everyone looks for their pieces. Look what the old Joe St. Clair pieces did when Joe sold his molds. Mrs. Degenhart's pieces are very much in demand since her death.

The Hansen pieces are others that have disappeared.

As the new glass and colors appear on the market, buy the pieces you like then. Don't wait or you will be paying a lot higher price a year from then when it's discontinued.

Mosser, Westmoreland, L. E. Smith and others have also made some beautiful collectible glass. Also, Levay Glass

and L. G. Wright Glass have had some beautiful pieces made for them.

Several individuals have had a run or two made on certain items that will some day be sought after. There is such a wide choice right now that we suggest you buy it while it's reasonable.

If you're doing it only for investment, sell it when the children are ready for college and see what happens. From experience, I know that money in the bank never paid this kind of interest.

COLORS

Rubigold - marigold - reddish orange

Peacock - smokey gray

Helios - green with silver and gold
iridescence

Aurora Jewels - cobalt - dark blue

Sunset Ruby - red - reddish yellow

Azure - ice blue

Vaseline - yellow

To tell the color of a piece of carnival, hold the base up to a strong light and the color you see through the base is the color no matter what surface colors you see.

FACTORY MARKS

Fenton - Fenton in oval
Imperial - IG, LIG and ALIG
Westmoreland - W with a G through it
Smith - small s
Joe St. Clair - Joe St. Clair JSTC
Bob St. Clair - Maude and Bob St. Clair
L.G. Wright - W with line under enclosed
enclosed in circle
Wheatoncraft - Paper label - Wheatoncraft
Mosser - M, when signed
Guernsey Glass - B
Summit Art Glass - V
Degenhart, Crystal Art Glass - D enclosed
in a heart
Boyd Art Glass - B in a diamond
Indiana - no signature
Fosteria - no signature
Jeannette Glass Co. - no signature
Federal Glass Co. - no signature
Pilgrim Glass Co. - no mark
Wetzel - R.W.
Gibson - Gibson
Lester Cunningham - small i inside big C

FACTORIES

If you have never been to a glass factory, plan now to visit one on your next vacation. It is the most exciting experience for a glass collector there is. Almost all the factories have tours and take you through and explain what is going on in each process. The people who make this glass are so friendly. The factories we have visited go overboard to make your trip exciting. They have gift shops at most of the factories that can drive you crazy.

In Book I and Book II "Encore by Dorothy" I listed the factories making carnival. Now you will see that list has really dropped off. All the glass factories are having trouble. The price of gas to heat the furnaces, the overhead and many other factors have caused them to close. We are very sad to lose these old, old companies.

Imperial Glass, Bellaire, Ohio, is no longer in business. This makes the IG-LIG and ALIG very collectable. Most people think the IG is best, but there were a lot fewer pieces made of LIG and a whole lot fewer of ALIG.

ST. CLAIR'S HOUSE OF GLASS

No longer in business - much to the sorrow of us all Bob St. Clair passed away June 6, 1986, and Maude St. Clair about a year before him. They will be missed by all of us. They were very nice people. I'm sure any glass marked Bob and Maud will be in demand by collectors.

WESTMORELAND - GRAPEVILLE, PA

No longer in business. Guess for the same reason Imperial Glass went out. People are now looking for Westmoreland Glass.

INDIANA GLASS - DUNKIRK, IND.

Still there but not making any carnival anymore.

FENTON ART GLASS
WILLIAMSTOWN, W.VA.

Still going strong. Still making some carnival. They are about the only large company left. Their glass is very collectable.

ST. CLAIR GLASS WORKS, INC.
ELWOOD, INDIANA

If you visit this factory you'll find Joe St. Clair himself sitting there blowing his paperweights. Joe is one of the old timers in the glass business and the knowledge he carries is so exciting. He can tell you stories that would curl your hair.

L.E. SMITH GLASS COMPANY
MT. PLEASANT, PENNSYLVANIA

Most of you remember that Mr. Hank Opperman was one of our speakers at the 1978 Encore convention. At that time Mr. Opperman had worked previously at L.E. Smith but was then working for Imperial Glass. As of now, he is back at L.E. Smith and is their President.

SUMMIT ART GLASS
MOGADORE, OHIO

They are still going strong. Russ Vogelsong who owns the company has purchased a lot of the Imperial Westmoreland, Cambridge and St. Clair molds.

CRYSTAL ART GLASS
CAMBRIDGE, OHIO

This plant is the old Degenhart plant and now owned by the Boyds. They have made some carnival in the last year.

MOSSER GLASS - CAMBRIDGE, OHIO

Still in there working, but not doing near as much in carnival as they were a few years ago.

GIBSON GLASS - MILTON, W.VA.

Still making his hand blown pieces. One of the smaller companies but he makes some beautiful glass.

WETZEL GLASS - ZANESVILLE, OHIO

Bob reports he's still making paperweights, but has sold most of his molds, and has given up pressing glass. Still making molds.

CRIDER GLASS

Still working at it. They make a lot of paperweights and iridized whimsys.

TABLE OF CONTENTS

Atlantis	1
Baroque Candy Box	2
Basket Weave	3
Beaded Daisy	4
Bi-Centennial Bell	5
Bimbah	6
Boy & Girl Bookends	7
Butterfly	8
Butterfly Bon Bon	9
Carolina Dogwood	10
Cat	11
Cherokee Strip	12
Cherry & Cable	13
Chessie	14
Clown	15
Collie	17
Cupid Plate	18
Cupie	19
Daisy & Button Shoe	20
Daisy & Button Pitcher	21
Daisy & Button Bell	22
Daisy & Button Slipper	23
Degenhart	24
Diamond & Sunburst	25
Donkey	26
Eagle Trivet	27
Egg	28
Egg Hand Decorated	29
Elephant	30
Farmyard	31
Finecut & Grape	32
Glass Maker	33
Glass Review	34
God & Home - Mini	35
Grape & Cable	37
Grape & Cable Lamp	38
Grape & Cable Humidor	39
Heart Shape	40
Hearts & Flowers	41
Heart & Vine	42
HOACGA	43
Hobnail	44
Hobstar	45

Holly	46
Horses	47
Imperial Grape Salt Shakers	48
Imperial Grape Crimped Nappy	49
Inverted Fan & Feather	50
Inverted Strawberry	51
Iwo Jima	52
Jenny Lind	53
Jenny Lind	54
Lady Legs	55
Madonna	56
Merry Christmas	57
Mirror	58
Mouse Lovers	59
Muddler	60
Owl	61
Pagoda	62
Paneled Daisy	63
Paneled Daisy	64
Pansy	65
Patriot Planter	66
Peacock	67
Persian Medallion	68
Pineapple	69
Pinwheel	70
Pot of Gold	71
Regal Iris	72
Rocky	73
Roses In Snow	74
Snow Man	75
Sonny Boy	76
Strawberry	77
Strutting Peacock	78
Swan Candle Holders	79
Swan Figurine	80
Thistle	81
Thistle	82
Thistle	83
Thumbprint?	84
Votive Cup	85
Washington	86
Wheaton Animals	87
Wheaton Animals	88
Wild Rose	89
Windmill	90
Wine & Roses	91

A T L A N T I S



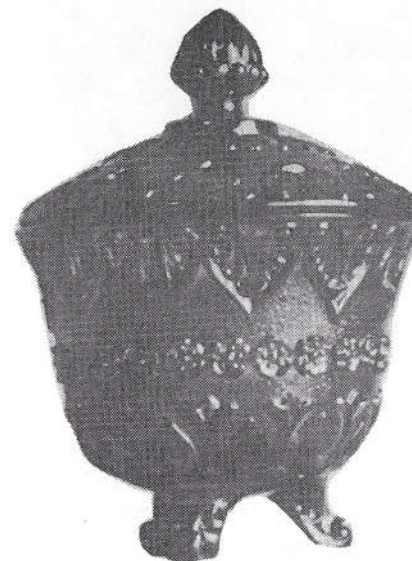
Here's one of the prettiest pieces in new carnival. Most of them I've seen have excellent iridescence and the mold work is a piece of art. It was Fenton's #5150 and made only in Amethyst in January of 1971. I feel it someday will hold the same place the old Farmyard bowl holds in old carnival today. At least it will run a close race with the mermaid vase for that spot. It carries the Fenton logo.

Again in 1981 Fenton made this piece in Peach Opal for MLT Glass of Kansas City, Missouri. It was made exclusively for them and less than 500 pieces were made

in all in 5 different shapes - regular vase, fan shape, rosebowl, flared bowl and spittoon. These were all signed Fenton.

At this time 26 pieces were made in French Opal, not iridized.

B A R O Q U E C A N D Y B O X



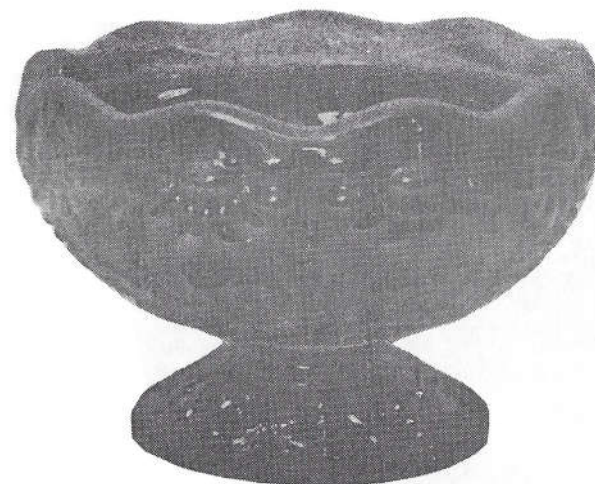
This was Fenton's #9383. It was made in Amethyst in 1978. In 1977-78 it was made in Ruby and in 1976 in Independence Blue.

B A S K E T W E A V E



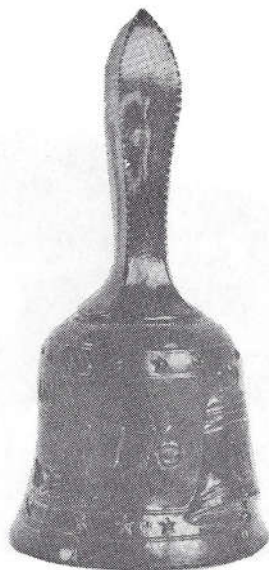
This pretty little basket weave bowl was made in Orange Carnival in 1976-77-78. It was also made in 1970-73 in Amethyst Carnival. It was made by Fenton and their #8222.

B E A D E D D A I S Y



This is the bottom part of the well known Fenton Fairy light. It was made in Peach Opal in five different shapes for Encore in about 1983, not more than 300 pieces all together. One was even pulled down like a mini cake plate.

BI - CENTENNIAL BELL



January 1976 Mosser Catalog shows these bells in plain Cobalt and Cobalt iridized #129. They say Declaration of Independence on one side and 1776-1976 with the Liberty Bell in the middle on the other. They have the M in a circle inside where the clapper attaches. They are 6" tall and 8½" around the bottom.

Terry Crider who buys blanks and iridizes them has also iridized some of these. I have one signed "Terry Crider" #11. Terry has signed his around the bottom on the inside.

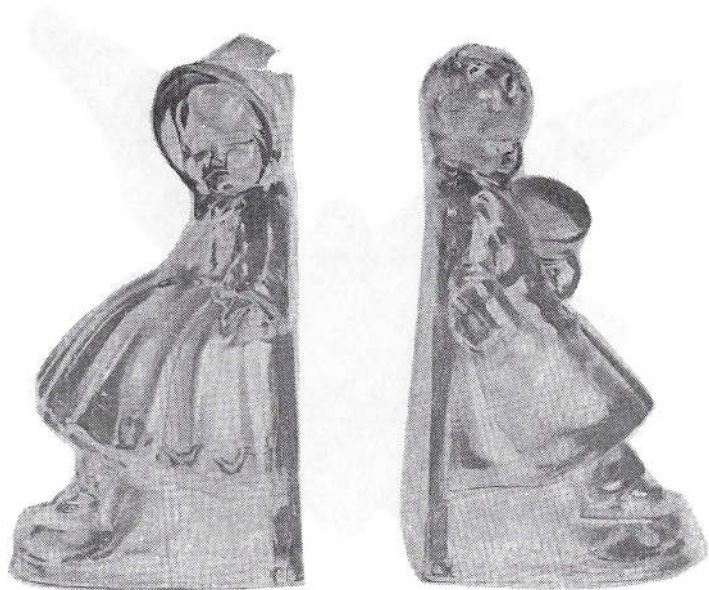
BIMBAH



This elephant was in a series of 24.

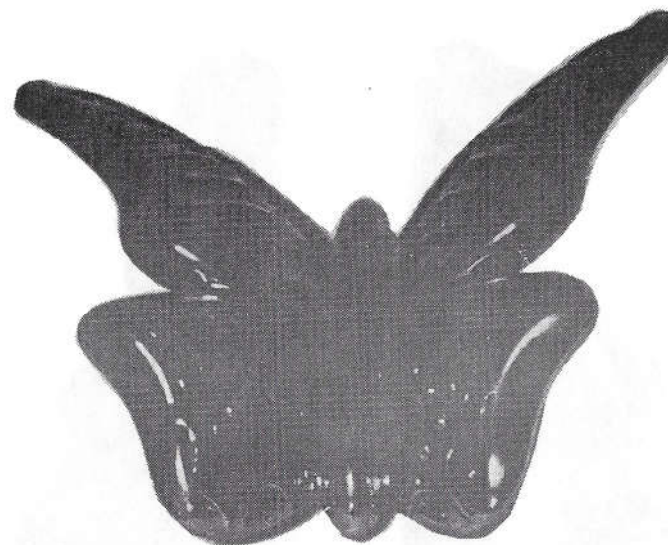
They are 4" high and 4" long. They were dated and signed RH in the perimeter of a four leaf clover. The initials stand for Robert Henry who had the mold made. There were less than 1000 made in each color. A few were iridized. Off hand I know of a pink, light blue, white, green, red and amethyst that were made. These were made in the early 80's. The mold was donated to the Allen County-Fort Wayne Historical Museum when the series was finished.

BOY & GIRL BOOKENDS



Wheaton's #168 seen only in Pastel Blue
They are 5" high and shown in the
Wheatoncraft brochure which indicates
they were made sometime in the 70's.
They carried a paper label but no
signature. Very attractive little
set, hard to find right now.

BUTTERFLY



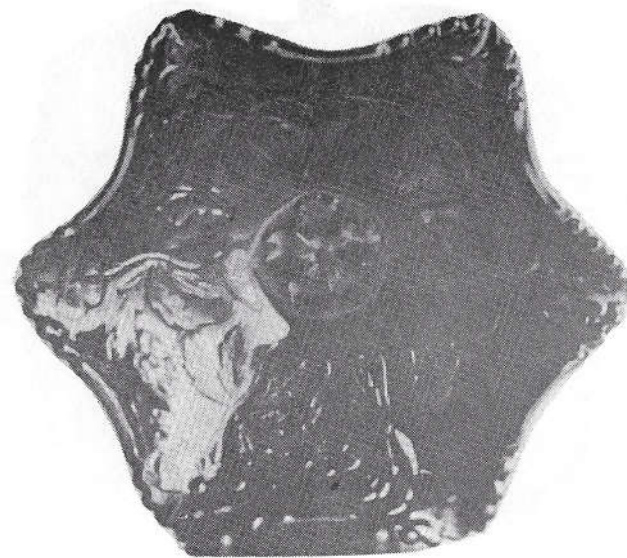
Made in Amethyst in July of 1970. It was
#5170CN. You don't see very many of these
around anymore.

BUTTERFLY



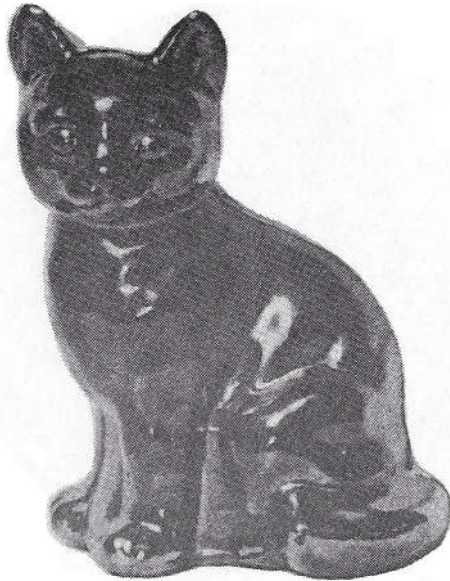
This handled Bon Bon was made by Fenton #8230 in Amethyst carnival from 1973 - 1977. It was also made in Orange in 1973.

CAROLINA DOGWOOD



A pretty pattern made in 1977-1978 in Amethyst and Orange carnival. It's a very nice bowl in either color. Made by Fenton.

C A T



Fenton has made several animals in the last few years. This cat is 4" tall and dark carnival. It's #5165CN. They also made an owl at the same time. A collection of the Fenton animals would sure make an impressive show case. This was made in 1980.

C H E R O K E E S T R I P



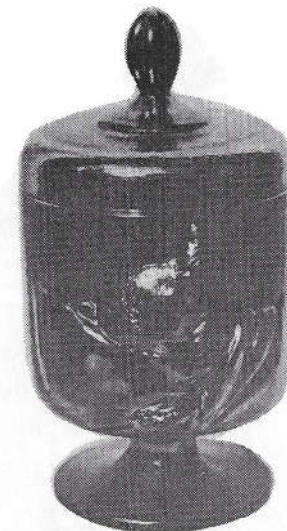
This plate was made in 1979 for Cherokee Strip Museum, Alva, Oklahoma. It shows an Indian on a horse, and a covered wagon in the background, around the edge are grapes and leaves. It was made by Mosser in Amberina or Red.

CHERRY & CABLE



Made by Westmoreland in Red and Turquoise in 1980 for Levay Glass of Illinois. A very beautiful piece. Also believe it was made in Amethyst, but I'm not positive.

CHESSIE



The Chesapeake and Ohio Railroad wanted a special gift for their customers, friends & VIP for Christmas gifts. Fenton worked hard in perfecting just the right mold. As you watch the trains go by remember seeing the emblem on the yellow box car with the kitten on the pillow in black? This is the design they used. The mold still belongs to Fenton. This piece also won the design award for Fenton in 1970. It was made in Amethyst carnival. On the bottom it reads: "Chessie 'By Fenton' - December 1970.

It was made again in 1976 in Rosalene but so far never in any other carnival colors.

Either of these Chessie boxes bring a very high price and would be considered rare.

C L O W N



The clowns were named in alphabetical order A through O was this clown and P through Z was a different mold with a clown sitting on a barrel. Only a few were iridized. They were Daisy

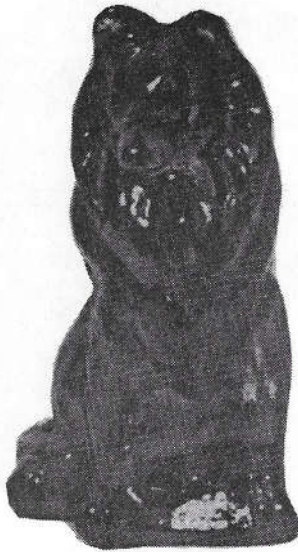
in Red and Koko in Green in the first series and Poko Powder Blue, Toby in Clear and XXEY in Yellow in the last half. These were made by Mosser in '81-'82. No. 1 Clown brings a very high price. A whole set is very impressive in a shadow box. There was an extra one called "The End".

The Clowns names were:

A Arty	N Niki
B Bags	O Orie
C Cleo	P Poko
D Daisy	Q Quinn
E Eros	R Rufus
F Flip	S Sambo
G Gabby	T Toby
H Hoagy	U Uwe
I Iffy	V Von
J Jiggs	W Whity
K Koko	X Xxey
L Lyle	Y Yank
M Maxi	Z Ziggy
Mc McGoo	

There was also a Clown made called the "Star" which was hand painted and sold to the dealers at a very high price. There was also an extra one in the first series, white milk glass, iridized, and hand painted balloons.

COLLIE



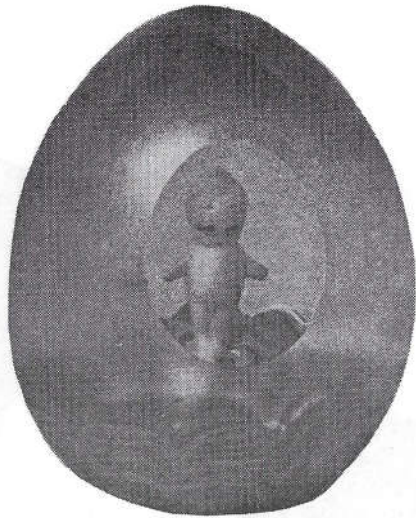
This Collie dog was made by Mosser in many, many colors. Pink, Blue, Green, etc. Whatever color you find it in, you will know it's Mosser's. Still using this mold today. They are about 3" tall and signed on the bottom with an M in a circle.

CUPID PLATE



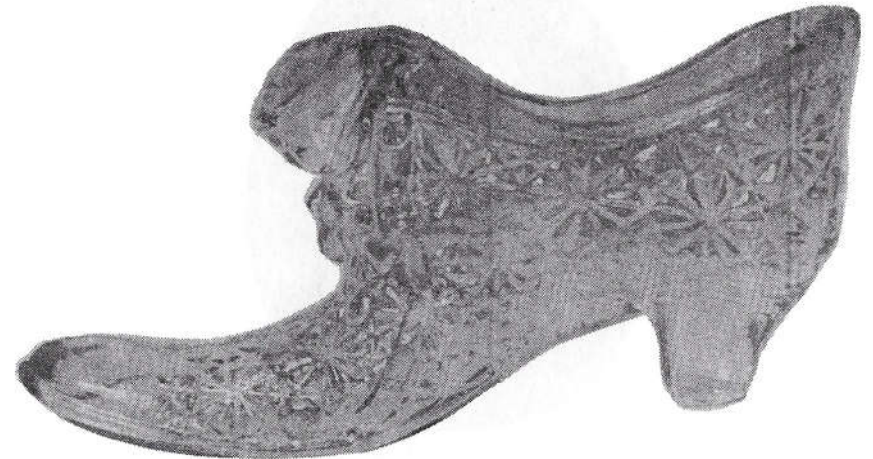
Here's a cutie by Joe St. Clair. This 8" Cobalt plate has 24 small hearts on the outer rim. Closer to the middle there are 12 small kewpies. In the middle is Cupid with his bow and arrow and has two small hearts above Cupid and two below. It is signed Joe St. Clair on the back. A very attractive plate. Probably was made in the early 70's.

C U P I E



This paperweight is a real goodie to me. It was made by Joe St. Clair in Clear Glass and then iridized. Cupie stands on blue and white colored glass on the one I have but imagine these were made with other colors on the bottom. When you look through the side, Cupie is large but looking through the window Cupie is real tiny. A piece to treasure if you have it. Would expect it to be on the rare list someday. The paperweight is signed Joe St. Clair on the bottom. Made in the early 70's, it's 3½" tall and 8½" around.

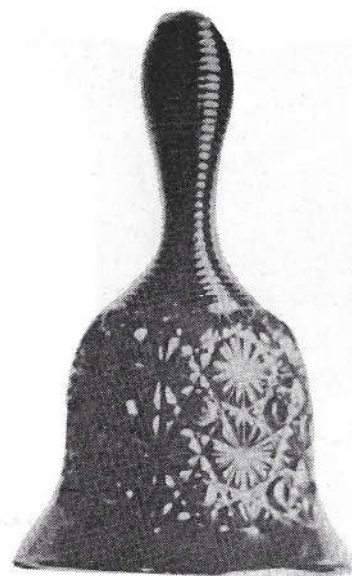
D A I S Y & B U T T O N



This shoe with the kitten was made in many, many colors but very little carnival. It was made in 1971 for the Olde Virginia line in Amethyst carnival.



This was made for L. G. Wright in 1976 in Crystal. I have one in Ice Blue iridized. I was told it was just a sample in the blue and very few were made. It is a real heavy pitcher and probably that's the reason it wasn't continued. I've never heard of any tumblers for this.



This bell, Fenton's #1966 was made in Amethyst and Orange in 1973. A nice bell to add to a bell collection.

DAISY & BUTTON



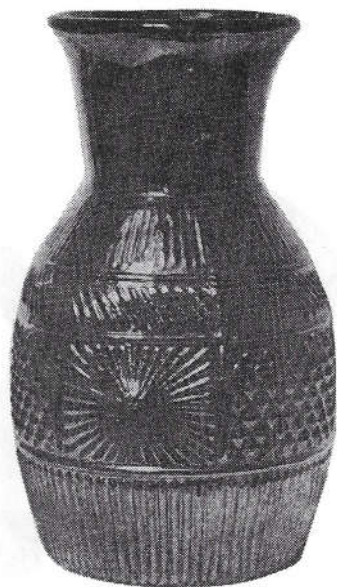
This was L. E. Smith's Daisy & Button slipper, No. 80C. It was made in many colors throughout the years. We know of ones in Amethyst, White, Amberina, Amber and Green, but I'm sure there are many other colors. The daisy and button pattern was made in variations by several other companies.

DEGENHART



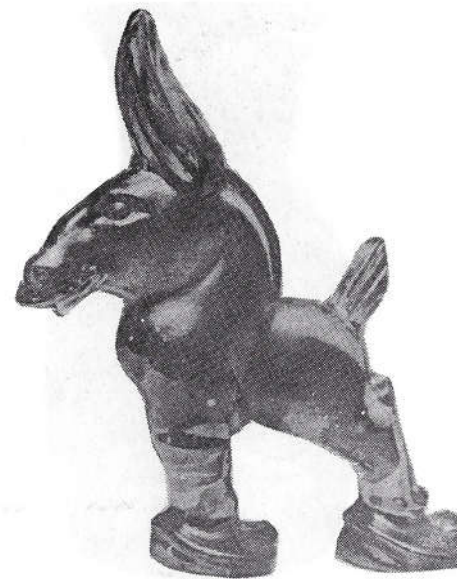
This little 5½" diameter plate is in Cobalt Blue. It has her portrait in the middle and around the rim it reads "First Lady of Glass Elizabeth Degenhart." It is signed with a D in a heart and you will find the signature right below the neck on the front of the plate. Elizabeth Degenhart was a fine lady and admired by many. She passed away on April 16, 1978 and Bernard Boyd now owns her old company. Consider yourself lucky if you find this one.

D I A M O N D & S U N B U R S T



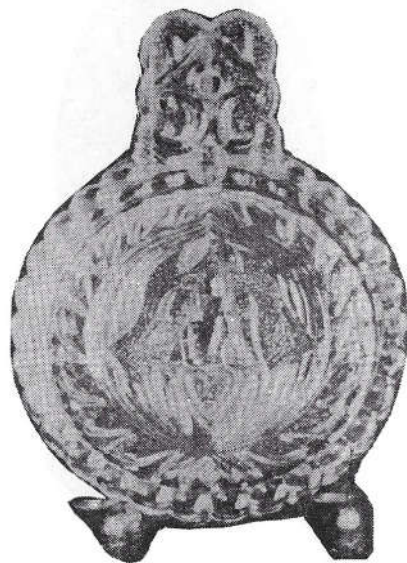
This vase was made by L. E. Smith in 1976 in dark carnival. I have heard it was rare but don't know why as it did appear in their catalog.

D O N K E Y



This was made in 1980 in Meadow Green by Imperial. Figurines are 3½" high and only 750 were made. Consider yourself lucky if you own one of these. Also see the Elephant in this book that went along with it.

EAGLE TRIVET



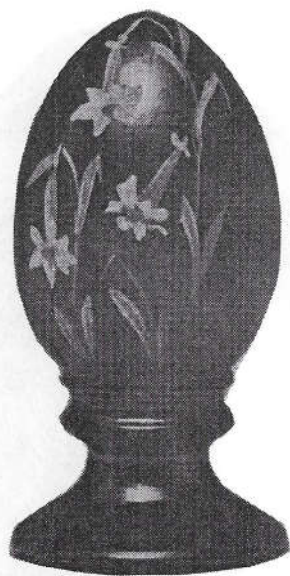
Made in Azure Blue in 1970 by Imperial. This is a rather hard piece to find. Although it was in their line you see very little Azure out there for sale.

E G G



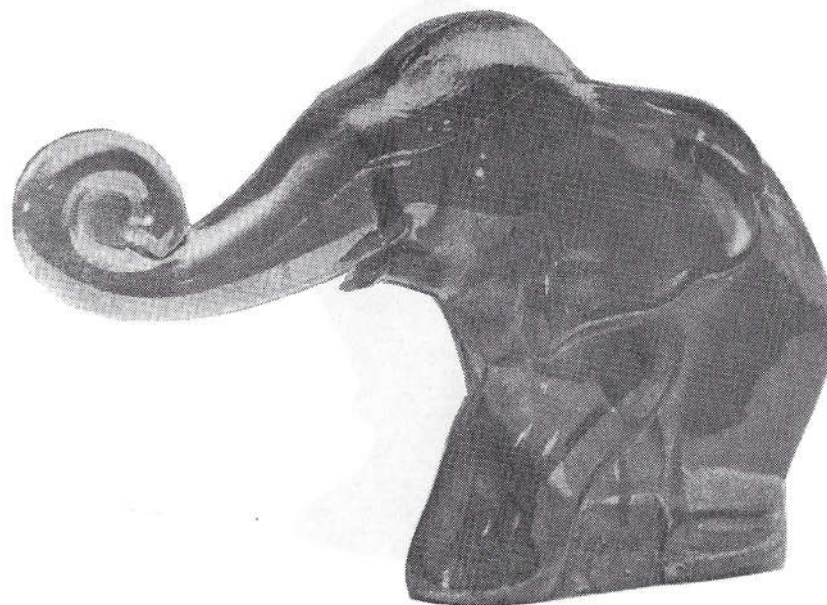
Fenton made this egg in many colors, but in 1974 this showed up in Amethyst Carnival. I've also seen this in Burmese collections, but it was never made in Burmese. The egg that looks Burmese has had the pink painted on if you look closely, and they were signed by the artist that did the painting. This egg is really custard.

E G G



Also shown here is one of the Amethyst Eggs that has been hand decorated. All Eggs are hard to come by.

E L E P H A N T



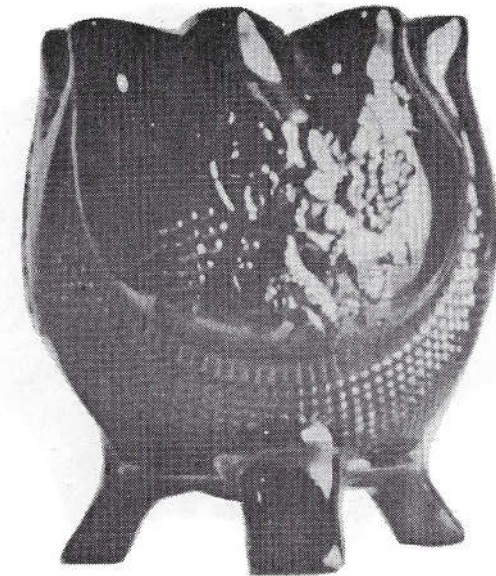
This is the one that was offered at the same time as the Donkey in 1980 for the election. These are in Meadow Green Carnival glass. Figurines are $3\frac{1}{2}$ " high. There were 750 of each made and numbered which should make them very rare someday. This was a Heisey mold. A dealer who ordered \$500 worth of the Green Carnival got one free. If you wanted the running mate, it cost you \$35.00 way back then. They were made by Imperial.

FARMYARD



The bowl and plate were made for Chuck Stone of Columbus, Ohio, by Fenton. It was made in Orange in July, 1973, and Amethyst in 1974. It was signed MIMI. This was Mr. Stone's wife's name and also the name of the company that marketed them. This was not the original farmyard mold.

FINECUT & GRAPE



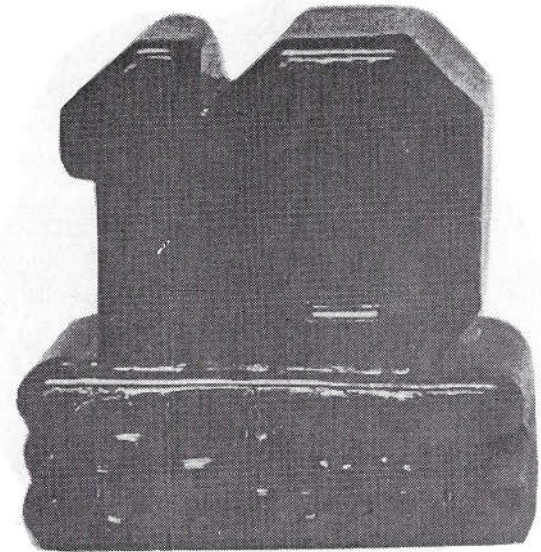
Fenton's 3-toed Grape Rose bowl. It was made in dark carnival in 1978, #8457. I've also seen this in Red made for Levay, I believe.

GLASS MAKER



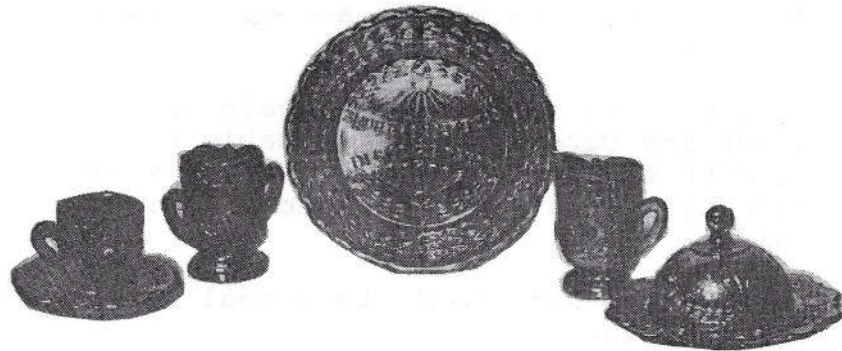
This little cup plate was made in 1974 for the Glass Festival of Elwood, Indiana by Joe St. Clair. It could have been made in other colors but we have only seen it in Ice Green.

GLASS REVIEW



These paperweights were made in 1981 by Wetzel for Barbara Shaeffer, owner and editor of the Glass Review. Barbara sent these to some of her writers commemorating her 10th anniversary of the Glass Review. Barbara said she only had 10 to 15 of these made in Amethyst Carnival and a couple in Aqua which she kept.

G O D & H O M E - M I N I



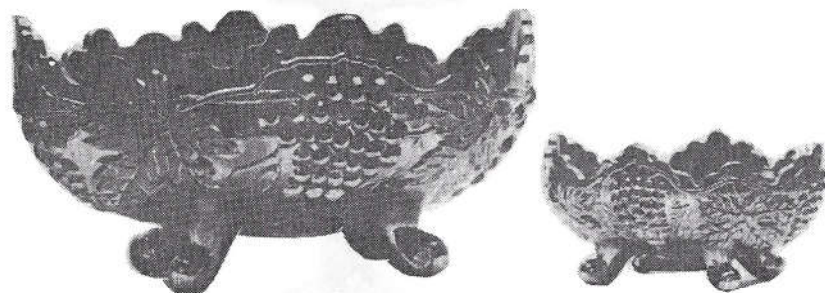
Shown here is the God and Home mini table set made for Encore in Cobalt Blue in 1980 by Mosser. It includes a plate, cup and saucer, sugar, creamer and the covered butter. These pieces were designed to match the Cobalt mini God and Home 1979 souvenir water set for Encore, Book II, pg. 45. It was the first complete set of children's dishes to be made in new Carnival. The molds are owned by Encore and made by Al Botson of Cambridge, Ohio. In the bottom of these pieces you will find a small t in the middle of a D. This stands for

Dorothy Taylor. When a small table is set with these dishes and dolls sitting at the table it's very striking. It was the buyer's choice if they bought extra plates and cups and saucers. Less than 200 complete sets are out. We did have more plates and cups and saucers.

In 1981 this set was made again in Green and Turquoise and probably not more than 50 sets in all. These were made by Wetzel Glass of Zanesville, Ohio.

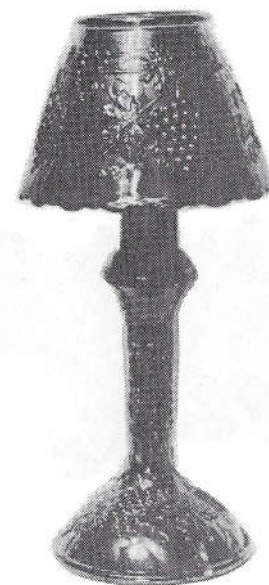
This little set should be a real rarity in the future.

GRAPE & CABLE



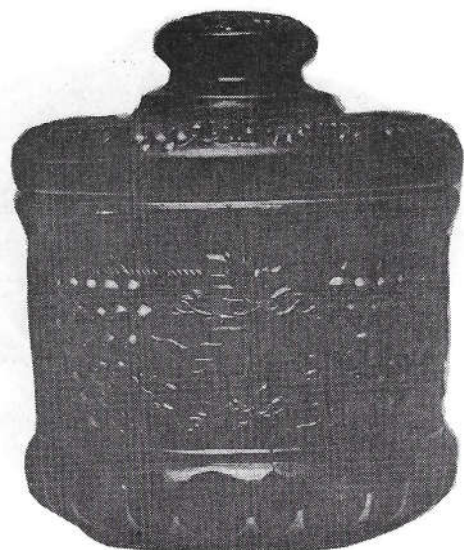
These were shown in L. G. Wright's catalog in 1977-80 in Amethyst. A 10" grape oval bowl and a 6" oval bowl. This berry set was made later in Green and Red. Each piece has the four feet. A complete set is pretty hard to come by right now.

GRAPE & CABLE



This lamp was made in Red Carnival by Fenton for the Heart of America Carnival Glass convention in 1981. This one has the horse shoe and says Good Luck. Very attractive little candle lamp.

GRAPE & CABLE



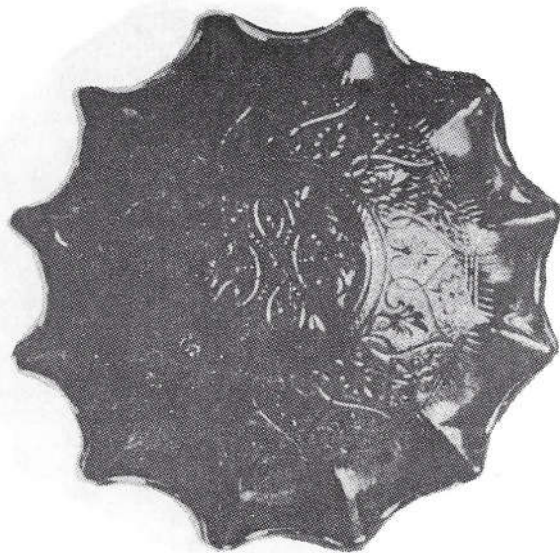
This humidor was made for Rose Presznick by Fenton in 1969. The bottom of the humidor is marked with the Fenton logo and the words Presznick's Carnival Glass Museum 1969 around the base. Inside of the humidor lid is marked with the initials RP & JP. These stand for Rose & Joe Presznick. Rose was the author of the Presznick books on old and new Carnival. She was a very nice lady.

HEART SHAPE



This was Fenton's #8200. It was made in 1972 in Amethyst. It is a very beautiful piece and would consider it as hard to find. I've listed it under the shape as that's what most people call it. I do not own this piece to look closely, but I've been told that a cluster of strawberries are on the top. This picture doesn't show it well enough for me to be sure.

HEARTS & FLOWERS



I have seen people buy this piece thinking it was old. It was made in Amethyst in 1970 and Orange from 1971-73. It's a very attractive bowl. This is also a Fenton pattern #8229.

HEART & VINE



#8237 by Fenton - The heart and vine bowl was made in Amethyst in 1973.

H O A C G A



This miniature mug was given free to the members at the Heart of America Carnival Glass Association banquets. They were filled with nuts and mints.

- 1978 - Red
- 1979 - Ice Blue
- 1980 - Green
- 1981 - Vaseline
- 1982 - Cobalt
- 1983 - Amber
- 1984 - Amethyst
- 1985 - Pink
- 1986 - Green Opal

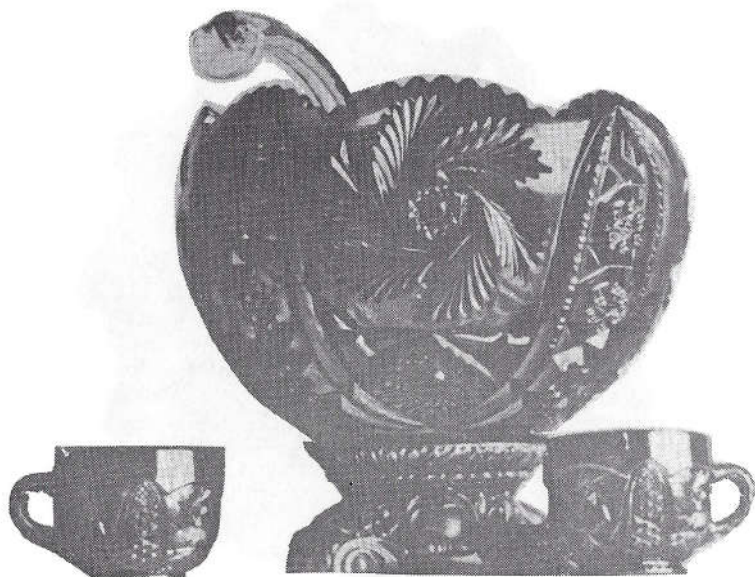
H O B N A I L



This mini water set was made in several colors by Wetzel in the early 1980's. Amber, Dark Blue, and a Light Blue in Carnival, but made in several other colors that weren't iridized. Cute little set for the mini collector.

Wetzel is no longer making pressed ware and has sold his molds. Don't know who got this mold.

H O B S T A R



The prettiest punch set I've ever seen. The iridescence is beautiful both inside and out. It is a 2 pc. punch bowl with 8 cups and a ladle. It was made in 1973-74 by L. E. Smith in Amethyst only.

H O L L Y



What a pretty pattern this one is if only the picture had turned out better. This bowl was made by Fenton in Amethyst Carnival in 1973. It was #8220.

H O R S E S



These bookends were made in Dark Green Glass and this pair was iridized for Christ and Ethel Harnish of Pennsylvania. They tell me this is the only pair iridized that they know of and it was made in 1978 by the L. E. Smith Glass Company.

I M P E R I A L G R A P E



These salt shakers were sent to me by Lucile Kennedy when she worked for Imperial. She said they were experimental in Green. They are very pretty and Green is the only color I've seen them in. Probably made in the late 70's or early 80's.

IMPERIAL GRAPE



This little 4-3/4" Grape Crimped Nappy was made in Rubigold and Peacock in 1966 by Imperial. Since then has been made in several other colors. The pink one, however, was experimental and only a few of those got out.

INVERTED FAN & FEATHER



I've seen one couple already pay a big price for this new piece. It's a lovely piece and was made by Joe St. Clair 69-70 in Marigold, Ice Blue and Cobalt. I've seen no other color, but feel sure it was made in other colors. Joe sold a lot of his molds to Summit Glass, so it will probably show up again.

INVERTED STRAWBERRY

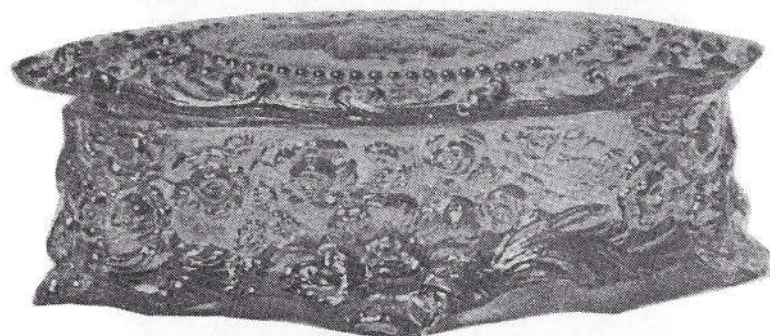


This basket was made in 1979 in Amethyst for Guernsey Glass and was made again in December of 1980 in Red for Guernsey Glass by Westmoreland. These are about 6½" tall from the base to the top of the handle and approximately 6" across the top. The handle on the Amethyst one is the same color but the Red baskets have clear handles. They are signed with a B on the bottom inside.

IWO JIMA



This paperweight was made in the late 70's or very early 80's. It was made for the Holly City Bottle Company of Millville, New Jersey by Wheaton Glass Company. It weighs approximately one pound. The one we have in our collection is Cobalt but it could have been made in other colors, but I've never seen any. Isn't it pretty?

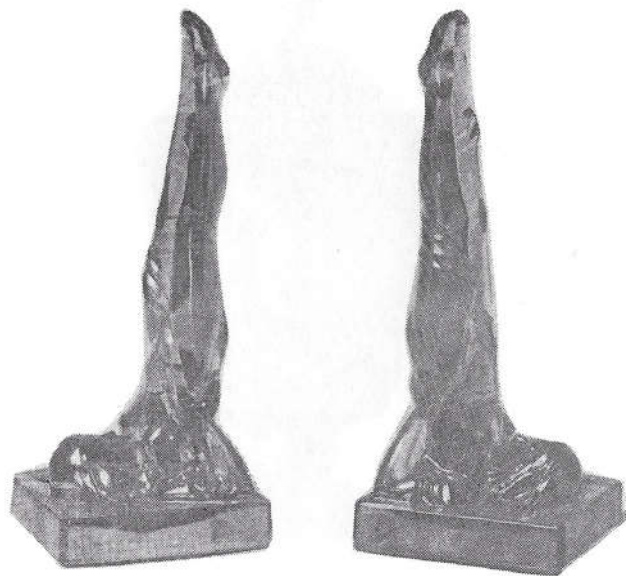


"The Swedish Nightingale" immortalized in Glass by Fostoria Glass Company. The Jenny Lind pieces made in the 1970's were experimental. They made a puff box, jewel box and pin box in Amber, Dark Green and Light Green. Some were iridized. The Fostoria outlet stores carried the ware, but it was never marketed nationally.



Unsold items were stored away until 1979 when the entire lot was purchased by one individual. The rose design in relief and the flowers that form the footed base make it very attractive. The lids show "The Actress" in profile with a beaded border surrounded by roses and ribbons. A three piece set would be very hard to find and considered rare.

L A D Y L E G S



These bookends are from an old Cambridge mold. The nudes were made by Mosser for an individual. They told me 70 pair were made in Green Carnival. I also have seen them in Custard. These were probably made about 1978-79.

These should be considered rare and very hard to come by. The mold work is gorgeous. You just can't beat the old mold makers.

M A D O N N A



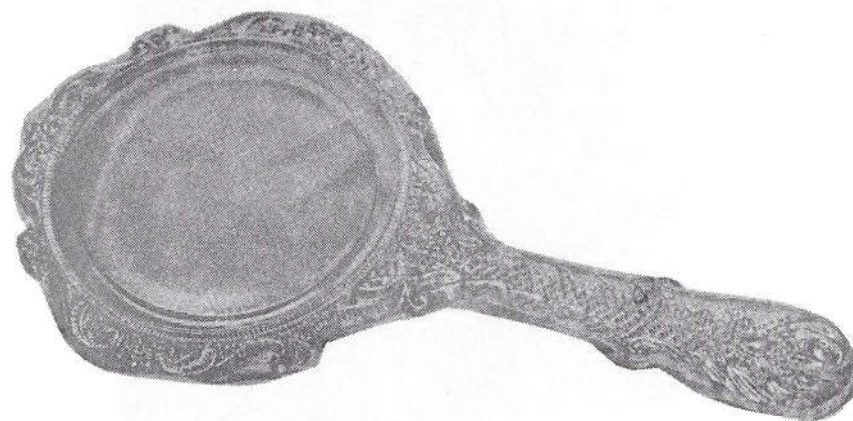
Another pretty piece by Fenton and is #9484. It was called the Madonna Candy Box and made in Dark Carnival in 1977-78.

M E R R Y C H R I S T M A S



Probably the first Christmas Card ever made in glass. Robert Wetzel designed the modd and made the card in Green Carnival. They are 4 x 4. These were made in 1982.

M I R R O R



This was an experimental piece by Imperial which never hit the market. The one I found is in Pink Carnival. I don't know the pattern or date, but thought you might run into one some-day, so it would be worth showing.

MOUSE LOVERS



Made for Pee Gee Glass of Indiana. This was a series of 12 and made by two different companies. A boy & girl mouse sitting together. 3" high and very detailed from the bow in her hair to the heart he holds in his hand.

No. 1-6 were made by Imperial and 7-12 were to be made by Viking after Imperial closed.

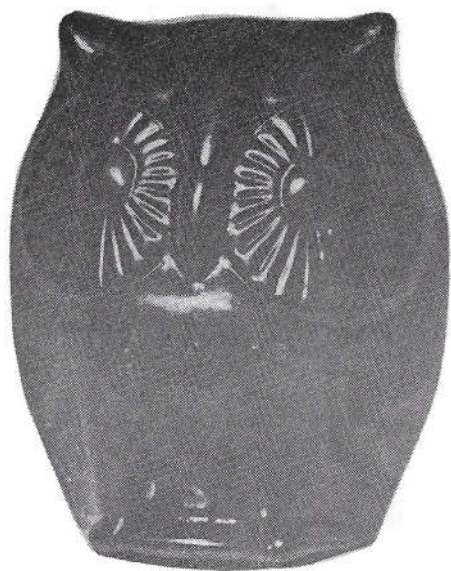
1000 or less were to be made in a different color every 6 to 8 weeks.

MUDDLER



Made in February 1980 by Fenton for Henry and Roserita Ziegler. It carries the Fenton logo. A muddler was used to muddle the sugar in an Old Fashioned. Henry says a lot of people collect muddlers and this is the first one made in new carnival. It measures 5½" long and is ½" thick. The color is a beautiful Ruby Red.

O W L



Another of Fenton's pieces of birds and animals. The owl was made in 1980 in Amethyst Carnival. They are 3½" tall. If a person had a full collection of these animals it would be quite attractive.

P A G O D A



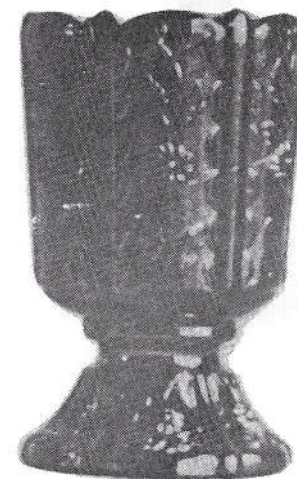
A beautiful piece of glass. Made by Fenton. This covered candy was made in Ruby in 1976-78 and in Amethyst in 1978.

P A N E L E D D A I S Y



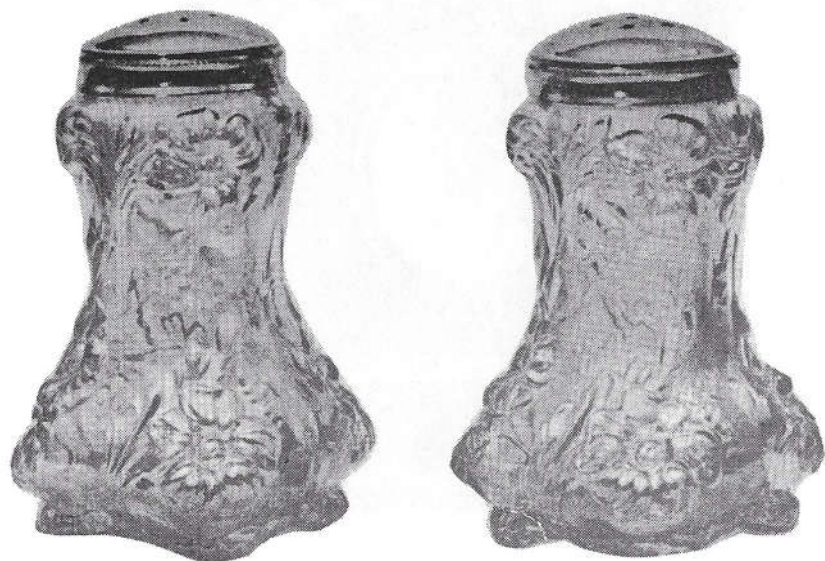
Fenton's #9185. This covered candy box was made in Amethyst Carnival in 1970 and in Orange Carnival in 1971. Remember, Fenton called this Orange but I have seen pieces that looked Red. Most of the pieces did have Yellow mixed in with Red, however.

P A N E L E D D A I S Y



This toothpick holder was made by Fenton in 1973 in Dark Carnival. It was #8294

P A N S Y



This is one of the prettiest salt & pepper shakers I've seen. These showed up in Westmoreland's 1975 catalog in Ice Blue #757. I've also seen these in Blue Milk and Pearl Carnival. These were a very limited item. Try to find a pair of these today.

P A T R I O T P L A N T E R



This planter was made in 1976 in Independence Blue by Fenton. Their #84991B.

PEACOCK



This bowl and a plate were made in 1969 for G. L. Wright by Westmoreland in Amethyst Carnival and Custard. The plate is a chop plate. This is one when the mark makes you think it could be a Northwood mark in a circle so beware. A very beautiful piece of glass.

PERSIAN MEDALLION



This compote was made in Orange and Independence Blue in 1976 and in Dark Carnival from 1972-1975. It was Fenton's #8234.

P I N E A P P L E



This lamp was made by L. E. Smith. They called it an 8" tiffany candle lamp. It was made in 1980 in Pink, Pale Blue and Crystal Luster.

P I N W H E E L



Fenton's #8227. This compote was made in Amethyst in 1970 and in Orange and Independence Blue in 1976. Fenton's Orange sometimes is mistaken for Red. It has a more amberince look.

POT OF GOLD



This piece was made for Roy Williams in a limited edition of approximately 1000, but only 300 were made. It was made in Cobalt and featured a 22 Karat Gold cover with a simulated gold coin pattern. It was made in 1980.

Williams sold his mold to Mosser Glass in October of 1980.

REGAL IRIS



Introduced at the Encore convention in April, 1980. This Gone With The Wind Lamp was made by Fenton for Larry & Joan Kellett of Jonesboro, Ark. The new lamp was made in Red as was the old rare one. The new one is electrified and not quite the same color red. Collectors should beware as this new one could be converted back to look like the old one. It also has a chimney which wasn't on when the picture was taken. Only 33 of these were made and sold out real fast. Anyone owning one of these is lucky. These were made from a new mold owned by the Kelletts.

This lamp was made again in 1980 by Fenton for the Kelletts in Aqua Opal. Sixty-two of the aqua ones were made.

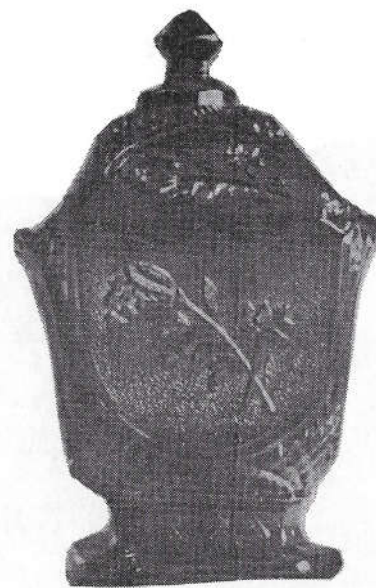
These lamps are bringing a large price if you can even find one.

R O C K Y



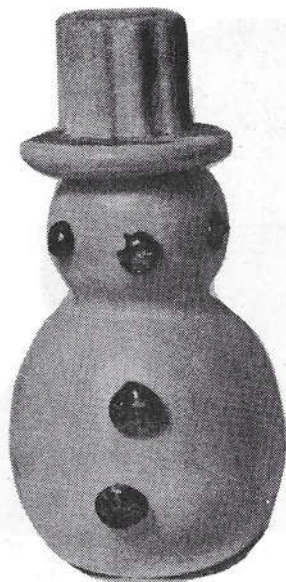
This is a reproduction of a Cambridge Glass Company candy container about 1915. The new ones are being made by Westmoreland for the Guernsey Glass Co. They are marked Rocky on the right rocker, branded on the right rump with the logo B in a triangle and dated on the underside. Some of these were iridized. These were also a series.

R O S E S . I N S N O W



A very pretty piece to own. It was made by Imperial in 1966 in Sunset Ruby. The roses lay in the middle of a stippled background. This is the only color I've seen this in. Rather hard to come by. I haven't seen one for sale for a long time.

S N O W M A N

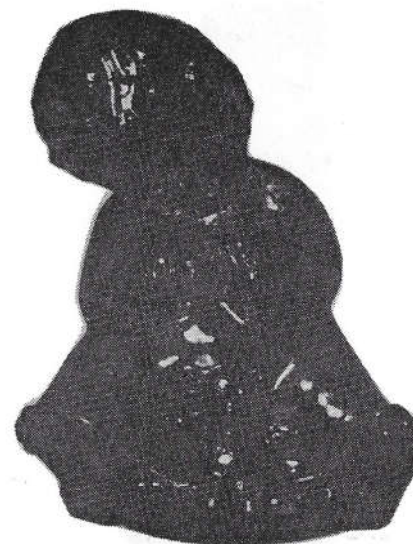


This was a piece made by Charlie Gibson for Encore. It was in White Glass with Amethyst bottoms. Less than 300 were made, all were signed and numbered. It was a Mother of Pearl type finish that was iridized. The other four pieces in this series were:

Buster Bass - Cobalt
Cuspadora - Green
Tommy Hawk - Cobalt
Owl Bird Vase - Cobalt

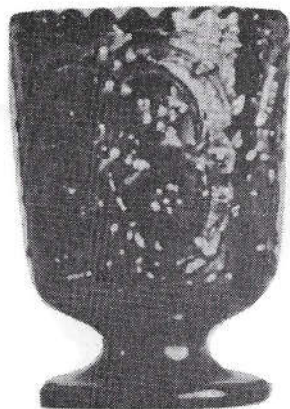
These were made in the late 1976 or early 1977.

S O N N Y B O Y



This was a series made for Bob Wheat. The mold was made by Wetzel. The first issue was Antique Marigold 5-20-81 and the 7th issue 12-5-81 was Oriental Pearl White. Both were iridized. I believe Wetzel now owns the mold.

STRAWBERRY



Fenton made this in 1971 in Orange Carnival. They also made it in Dark Carnival from 1973 to 1976. This is a toothpick holder.

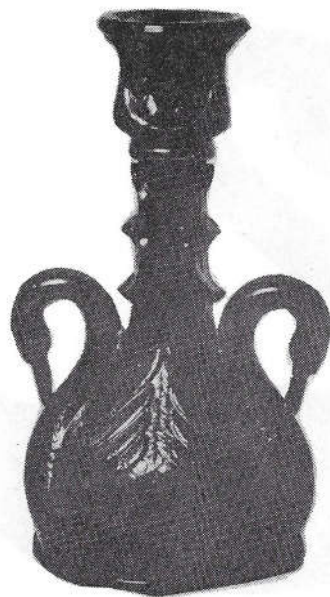
STRUTTING PEACOCK



This is a very attractive set. Seems rather hard to find in Amethyst. I believe the cream and sugar were the first pieces Westmoreland made for Levay.

In 1979 Westmoreland again made a covered sugar, covered creamer and a spooner in Red Carnival. They called this "Crimson Mother of Pearl". It was also made for Levay.

S W A N



These candle holders were made in 1973 by Fenton, #5172. They are in Dark Carnival. These are rather hard to find already.

S W A N



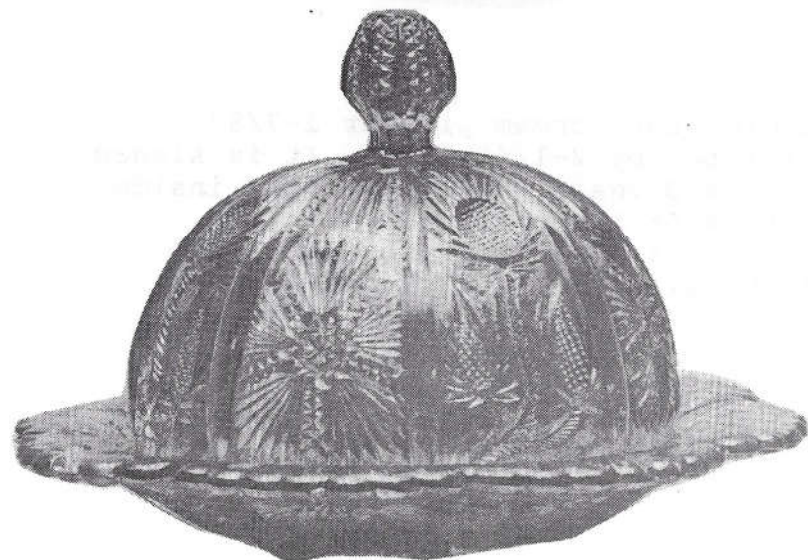
Another Fenton figurine. This swan was made in 1978 in Dark Carnival. It's #5161CN. A small bird was also made at this time.



The next 5 pictures are the same pattern, but I wanted you to see the whole set. It was made for L. G. Wight and is Pink Iridized. It carries a picture of a bee in the bottom. A very beautiful set and will be a very confusing one someday. Water set, spooner, tall creamer, tall sugar and the covered butter. It was made in 1980. Not to be confused with Mossers Inverted Thistle, Encore Book I, Pg. 59. These are not the same mold.



THISTLE



THUMBPRINT?



A miniature cream pitcher 1-7/8" diameter by 2-1/4" high. It is signed with a D inside a heart on the inside bottom of the pitcher. Made by Degenhart Glass of Cambridge, Ohio in Cobalt Blue.

VOTIVE CUP



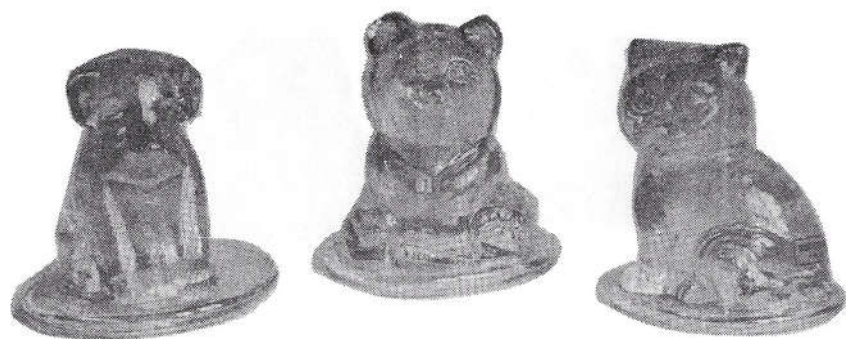
Made by Wheatoncraft in the early 70's. Rosemary at that company said they were used many different ways. They could be used as a toothpick or match holder or candle holder. Also there were lighters that fit in them. It measures $4\frac{1}{4}$ " to the top of the lid and 2" in diameter. The one I have is clear and iridized.

WASHINGTON



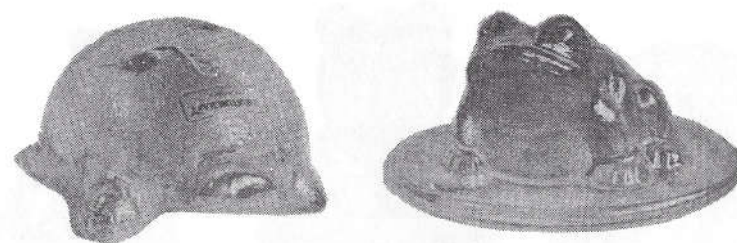
This plate was made in Amethyst Carnival by Westmoreland. The head of George Washington in the center of a 13 star bordered plate with a facsimile of Washington's signature and his birth and death dates 1732-1799 underneath.

WHEATON ANIMALS

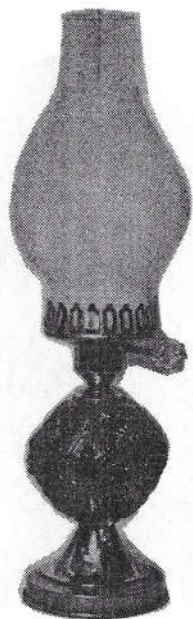


These pieces were made from 1974 to 1976 by Wheatoncraft in iridized crystal. They all vary in size but are approximately 4½" tall. There was a dog, bear, cat, turtle and frog. All carry the Wheatoncraft paper label but otherwise no identifying mark.

WHEATON ANIMALS



W I L D R O S E



An experimental piece made by Fenton in Red Carnival. It is electrified. The chimney is frosted, but the light bulb still shows through when lit. Maybe this is the reason it was never put in the Fenton line. It is 17" tall from the base to the top of the chimney. The base and chimney holder are brass. Very hard to find.

W I N D M I L L



Imperial's #27/58, 9 inch oval plate. It was made in Aurora Jewels in 1970. The mold work is very nicely done.

W I N E & R O S E S



A miniature water set made in April 1980 and was Carnival Glass. Encore's 4th souvenir. This was made in Ice Blue with a tiny opal edge if you look close enough. It was the first miniature water set in carnival with goblets. It came with the pitcher & 6 goblets. It was fashioned after the old carnival wine and roses set. Rose Presznick called it Cabbage Rose. Wine & Roses was made by the L. E. Smith Glass Co. The mold was made by Al Botson of Cambridge, Ohio. Only 500 were made and sold only to Encore subscribers. These were all

sold out by Aug. 1980. On the bottom it reads Carnival Glass Encore, K.C. MO 1980. The name Taylor can be found below the handle and to the right. The mold belongs to Dorothy and Bill Taylor.