

Wine Country on Ruby Amberina Stretch

Select pieces of Ruby Amberina Stretch glass feature Frances Burton's new handpainted Wine Country decoration of lush grapes on a trellis.

Save 3%

0321 AS

15 Pc. Ruby Amberina Stretch
Assortment



F E N T O N

Handcrafted American Glass Artistry
www.fentonartglass.com

4810 UB
Vase, Flip w/base
7 1/2"

7703 UB
Fairy Light, 3 pc.
7 1/2"

5430 UB
Basket, 8"
Inscribed with the signature
of Don Fenton

7601 RL
Epergne, 5 pc.
13"

Fenton Notes

The Art of Ruby Glass

In the first half of the twentieth century, glassmakers strived to make a uniform ruby color suitable for railroad signals, lantern globes, and auto tail lights. Today, Fenton's ruby glass is made with selenium and cadmium. This glass batch is sensitive to heat and interesting color variations often occur. Collectors take great delight in the red-orange effect called "amberina."

5177 UR
Cat, Alley
11"

2926 RL
Nut Dish
4 1/4"

5296 UR
Butterfly, 3"

Historic Collection

Limited to one year of production.

Fenton Notes

The Art of Stretch Glass

During the manufacturing process, these items are sprayed with a mixture of metallic salts before being reheated and brought to their final shape by a skilled glassworker called a Finisher. This finishing procedure often creates a myriad of striations and even a somewhat rough texture in the iridescent surface, particularly at the edges of the piece.



8450 RL
Vase, Swung
8-10"



2077 RL
Votive, Drapery
4 1/2"



4633 RL
Basket,
Paneled Grape
6 1/2"



4810 RL
Vase, Flip w/base
7 1/2"



5065 UR
Cat, 5"



5951 RL
Vase, Cloverleaf
8 1/2"



9394 UR
Candy Box w/base
7 1/2"



4107 RL
Bowl w/base
10 1/2" w.

Ruby Amberina Stretch

Fenton produced Stretch glass from 1917 through the 1920s, coinciding with the shift in the marketplace from ornate Victorian to streamlined Art Deco designs. The intense glow of Fenton's furnace is captured forever in these classic pieces.

Amethyst Carnival ⁷

Vivid Carnival glass fast became a Fenton trademark in 1907-08. Deep amethyst glass, which also played a vital role in the revival of Carnival during the 1970s, is sprayed with metallic salts while the glass is still hot. As spray is applied to the glass, a rainbow of color emerges. Robin Spindler developed a pattern of sweeping white blossoms for added appeal to this classic collection of art glass.

9750 CN
Punch Bowl w/base
includes 8 cups and
glass ladle
9" h. x 13½" w.

9048 CN
Punch Cups, each

6808 CQ
Trinket, Flower
4"

6861 CQ
Vase,
Beaded Melon
6" h.

5293 CQ
Bunny
3½" h.

Save 3%
0323 AS
10 Pc. Amethyst Carnival
Assortment

4802 CN
Epergne,
Diamond Lace
12"

1985 CN
Comport,
Daisy & Button
9½"

6331 CN
Basket, 6"

8450 CN
Vase, Swung
8-10"

7771 CN
Bowl, Swan
8¼" w.

4667 CN
Butter/Cheese

Sunset Stretch

The ever changing hues of sunset—from peachy-pink and orange blush to the beige-gold of twilight—all captured forever. Like a sunset, the shades vary, and each handcrafted piece is unique and new for 2003.

FENTON
Handcrafted American Glass Artistry
www.fentonartglass.com

Save 3%
0332 AS
 20 Pc. Sunset Stretch
 and Sunset Overlay Assortment

7653 SW
 Vase, Daffodil
 7 1/2"

4552 SD
 Cakeplate, Leaf
 12" w.

1970 SD
 Candlesticks, Pair
 Daisy & Button
 5"

5116 SD
 Plate, Leaf
 8 1/4" w.

1928 SD
 Bowl, Daisy & Button
 11" w.

2837 SW
 Basket, Wildflower
 7"

7788 SX
 Candleplate
 6 1/8" w.

5296 SD
 Butterfly
 3"

Fenton Notes

The Art of Sunset Glass

This recently developed Fenton color is a refinement of the many pink colors we have made since the 1920s. The primary colorant is selenium, and this ingredient is extraordinarily sensitive to heat. The glass batch must be carefully melted and worked quickly to maintain the proper range of color. Sunset shades from a luscious peach to a warm sienna.

2077 SD
 Votive, Drapery
 4 1/8"

1906 SD
 Salt & Pepper,
 Daisy & Button
 3 1/8"

1903 SD
 Cream & Sugar
 Daisy & Button, 3"

Early Spring

Perfumes

5310 I2
Perfume, 7½"
(Blue)

Save 3%!
0344 AS
13 Pc. "Dressing Table Darlings" Assortment



5310 OE
Perfume, 7½"
(Violet)

9687 OE
(Violet)



9687 NI
Trinket, Hex, 4"
(Rose)

5310 NI
Perfume, 7½"
(Rose)



6877 C3
Trinket,
Art Nouveau, 4" w.
(Rose)



5780 K6
Trinket, Heart, 4" w.
(Crystal Decorated)



6877 7S
Trinket,
Art Nouveau, 4" w.
(Willow Green)

7781 FS
Tray, Oval 12½" w.
(Opal Mist)

5310 GY
Perfume, 7½"
(Willow Green)

9687 GY
(Willow Green)

"Dressing Table Darlings"

Fabulous, feminine finery for the boudoir or bath, reflecting your glamorous side. Refined accessories will adorn any dressing table. Our perfumes and trinkets sparkle in a variety of fresh colors. Mix and match to suit your every mood and showcase your collection on a delicate Opal Mist tray. A must for every lady's dressing table!

Butterflies

A new sculpture from Jon Saffell
in iridized colors.



5296 IZ
3"
(Blue)



5296 OQ
(Violet)



5296 GW
(Willow Green)



5296 FS
(Opal Mist)



5296 NI
(Rose)

5296 SD
(Sunset)



F E N T O N

Handcrafted American Glass Artistry

www.fentonartglass.com

Save 3%!
0345 AS
18 Pc. Butterflies Assortment

Amethyst Carnival

Carnival glass has been a Fenton trademark since 1907. The deep shade of amethyst glass, which played a vital role in our revival of Carnival during the 1970s, is sprayed with metallic salts while the glass is still hot. As the spray is applied, a rainbow of rich color emerges. Frances Burton used metallic paints to create her "Golden Daisy" motif, adding luster and depth. Six unique moulds (some from Fostoria and others from Imperial or Indiana) complete this new Fenton grouping.



6555 C4
5 Pc. Apple Tree
Water Set, 8 1/2"
(pitcher and 4 tumblers)

6576 C4
Tumbler, 4"

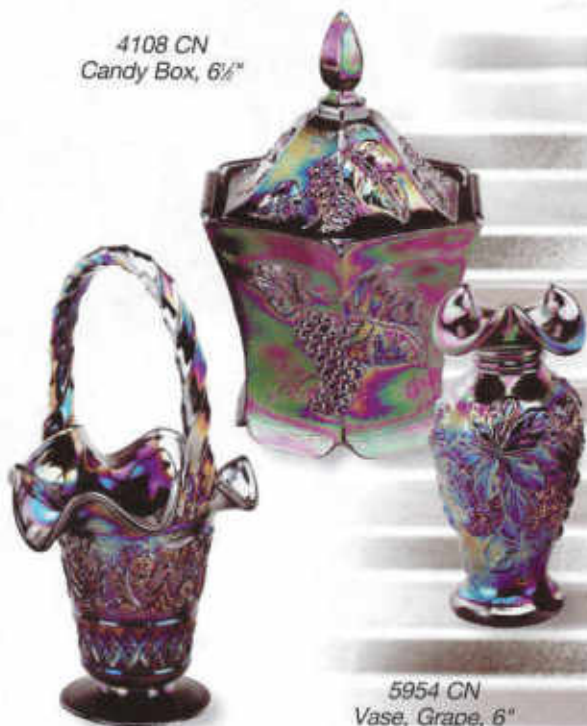
4108 CN
Candy Box, 6 1/2"

5066 CN
Hummingbird
4 1/2"

8395 CN
Vase, Cornucopia,
Feather, 7"

0038 AS
11 Pc. Amethyst
Carnival Assortment

4204 CN
Pie Wagon, 5 1/2"
(limit: 990)



4534 CN
Basket, 9"

5954 CN
Vase, Grape, 6"

2856 C4
Vase, Tulip, 8 1/2"



6063 UN
Pitcher
7 1/2"

4634 UN
Basket, Peacock
8"

5085 UN
Puppy, 4"

4764 UN
Bell, Threaded
5 1/2"

FENTON
Handcrafted American Glass Artistry

www.fentonartglass.com

Fenton Notes

The Art of Stretch Glass

During the manufacturing process, these items are sprayed with a mixture of metallic salts before being reheated and brought to their final shape by a skilled glassworker called a Finisher. This finishing procedure often creates a myriad of striations and even a somewhat rough texture in the iridescent surface, particularly at the edges of the piece.



5951 KA
Vase, Cloverleaf
8 1/4"

5066 KJ
Hummingbird
4 1/2"

5290 K4
Slipper, Cat, 6" l.

6536 KA
Bell, Drapery
6"

4585 KJ
Basket, Paneled Grape
4 1/4"



9596 K4
Votive, Two-way
4 1/2"



5058 K4
Elephant, Baby
3 1/4"

7108 JQ
Box, Paneled, 6"



F E N T O N

Handcrafted American Glass Artistry

www.fentonartglass.com



1168 KA
Vase, Footed
6"

2759 K4
Rose Bowl, 3 1/4"

5290 JH
Slipper, Cat, 6" l.

5430 KA
Basket, 8"



0043 AS
15 Pc. Green
Apple
Stretch
Assortment

Green Apple Stretch

Inspired by Florentine Green from the 1920s, this fresh new color blends perfectly with the lively colors now popular in home décor. A delicate "Pansy Morning" design by Stacy Williams enhances the sparkling Green Apple color—simply delightful when paired with Celeste Blue Stretch or pair with Rosemilk Blue Stretch for a trendy retro look.

2753 JP
Vase, Handkerchief
10"

5937 JP
Basket,
Paneled
10"

5066 JD
Hummingbird, 4½"

2077 JH
Votive, Drapery,
Two-way, 4½"

2835 JP
Basket, Wildflower
7"

9144 JD
Ringholder, 3"

5165 JH
Cat, 3½"

2759 JH
Rose Bowl, 3½"

5966 JP
Bell, Priscilla
4½"

7327 JQ
Rose Bowl, 5½"

5937 JQ
Basket, Paneled
10"

5220 JQ
Pig, 3"

5405 JQ
Fairy Light, 5"

7108 JQ
Box, Paneled
6"

5290 JH
Slipper, Cat, 6" L



Entertaining with Fenton

Functional pieces in translucent French Opalescent for an array of entertaining needs. A new Lily of the Valley cakeplate and Daisy & Button cream and sugar set provide endless wedding gift ideas. Wonderful heirlooms to pass on to your family's next generation of Fenton collectors.



5371 FM
Rose Bowl w/stand, 8"

2077 FS
Votive, Drapery
Two-way
4 1/2"



0045 AS
12 Pc. Entertaining with Fenton
Assortment



1928 FM
Bowl, Daisy & Button, 11" dia.



FG229
Entertaining with Fenton
brochure, 50 pack
(no charge)

Share the fun of collecting American-made glass and begin an heirloom tradition. Brochure with color photos of decorating and entertaining ideas, an introduction to decorating and entertaining with Fenton.

1902 FS
Cream & Sugar,
Daisy & Button, 3 1/4"



8416 FZ
Cakeplate,
Lily of the Valley
13 1/2" dia.



1910 FS
Covered Butter
Daisy & Button, 8" l.

5116 FS
Leaf Plate, 8 1/4" dia.



1906 FS
Salt & Pepper,
Daisy & Button, 3 1/2"

Ruby Amberina Stretch

FENTON
Handcrafted American Glass Artistry
www.fentonartglass.com

5956 RL
Vase, Plume
8"

1168 RL
Vase, Footed
6"

7704 UR
Rose Bowl
w/black base, 5"

9596 UR
Votive, Two-way
4 1/2"

2753 RL
Vase,
Handkerchief
10"

5987 RL
Bowl, Ribbed
12" dia.

5085 UR
Puppy, 4"

7143 RL
Plate, 11" dia.
(stand not included)

Fenton Notes

The Art of Ruby Glass

In the first half of the twentieth century, glassmakers strived to make a uniform ruby color suitable for railroad signals, lantern globes, and auto taillights. Today, Fenton's Ruby glass is made with selenium and cadmium. This glass batch is sensitive to heat, and interesting color variations often occur. Collectors take great delight in the red-orange effect called "amberina."

5960 UR
Candy Box, 6"

5083 UR
Tray, Fish, 9 1/4" L.

Fenton Notes

The Art of Sunset Glass

This recently-developed Fenton color is a refinement of the many pink colors we have made since the 1920s. The primary colorant is selenium, and this ingredient is extraordinarily sensitive to heat. The glass batch must be carefully melted and worked quickly to maintain the proper range of color. Sunset shades from a luscious peach to a warm sienna.

1928 SD
Bowl, 11" dia.



5116 SD
Plate, Leaf
8 1/2" dia.



5066 SD
Hummingbird
4 1/2"



7104 SX
Candle Jar, 7 1/2"
(candle not included)

6532 SW
Basket, Daffodil
8 1/2"



7653 SW
Vase, Daffodil
7 1/2"



2077 SD
Votive, Drapery, Two-way
4 1/2"



5296 SD
Butterfly, 3"



Ringholders

0064 AS
10 Pc. Ringholder
Assortment



9144 NZ
3"
(Rosemilk)



9144 JD
(Green Apple)



9144 KN
(Cobalt)

9144 OE
(Violet)

0059 AS
12 Pc. Hummingbird
Assortment

5066 SD
(Sunset)



5066 KJ
(Celeste Blue)



5066 NG
(Rosemilk)



5066 JD
(Green Apple)



5066 OQ
(Violet)



9295 SX
(Sunset)



5290 JH
(Green Apple)

5290 K4
(Celeste Blue)

9295 WP
(Lilacs 'n' Roses)



1995 N3
Slipper, 6" L.
(Rosemilk)



1995 KN
(Cobalt)



Slippers

Prince Charming awaits with the royal slipper! The lure of the slipper transforms every girl into a princess, and each sparkling piece is truly one of a kind. An enchanting collectible and a charming gift. Be a princess—you deserve it!

0057 AS
12 Pc. Slipper
Assortment

Hummingbirds

This colorful collection of adorable iridized birds seems to have all their wings in motion as they hover over your garden or back porch feeder.



5066 CN
Hummingbird, 4 1/2"
(Amethyst)

Garden Club

Iridescent jewel-like glass figurines sparkle like dew upon blossoms... delightful creatures nestled among the flowers, gathered as if for a meeting... It's the Garden Club. Nature's beauty is captured forever in handcrafted glass by the artisans of Fenton.

0524 AS
15. Pc. Garden Club Assortment

5066 OQ
Hummingbird, 4 1/2"
(Violet)

5296 KJ
Butterfly, 3"
(Celeste Blue)

5115 NG
Bird, 4"
(Rosemilk)

5274 JD
Frog, 2 1/2"
(Green Apple)

5215 SD
Squirrel, 2 1/2"
(Sunset)

5148 JW
Mouse, 3"
(Green Apple)

Baby Bunch

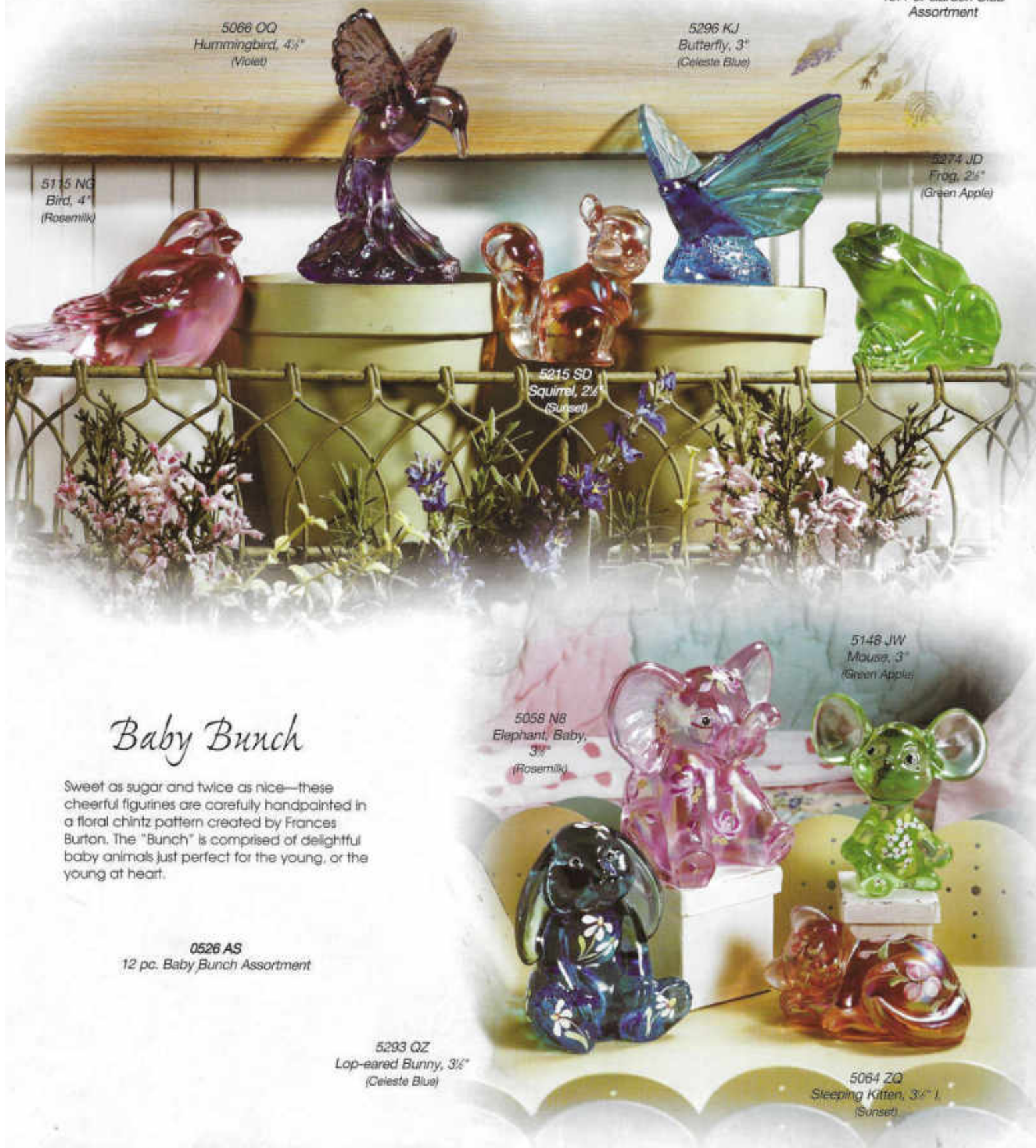
Sweet as sugar and twice as nice—these cheerful figurines are carefully handpainted in a floral chintz pattern created by Frances Burton. The "Bunch" is comprised of delightful baby animals just perfect for the young, or the young at heart.

0526 AS
12 pc. Baby Bunch Assortment

5058 N8
Elephant, Baby,
3"
(Rosemilk)

5293 QZ
Lop-eared Bunny, 3 1/2"
(Celeste Blue)

5064 ZQ
Sleeping Kitten, 3 1/2"
(Sunset)



Celeste Blue Stretch

Crisp white daisies float on a sky of Celeste Blue in Stacy Williams' new "Dancing Daisies" design. Accents of bright spring green let these pieces harmonize perfectly with our new Green Apple color statement.

2759 K4
Rose Bowl, 3½"

5960 KP
Covered Candy
6"

5430 KP
Basket, 8"

1168 KP
Vase, Footed
6"

5951 KP
Vase, Cloverleaf
8½"

6530 KP
Basket, 7"

Save 3%!
0522 AS
15 Pc. Celeste Blue Stretch
Assortment

5951 KA
Vase, Cloverleaf
8½"

5430 KA
Basket, 8"

5290 K4
Slipper, Cat, 6" l.

6536 KA
Bell, Drapery
6"

5065 KP
Cat, 5"

9596 K4
Votive, two-way
4½"

4585 KJ
Basket
Paneled Grape, 4½"

9144 KJ
Ringholder, 3" w.

5058 K4
Elephant, Baby, 3½"



F E N T O N

Handcrafted American Glass Artistry

www.fentonartglass.com

Save 3%!
0523 AS
15 Pc. Green Apple Stretch
Assortment

2753 JP
Vase, Handkerchief
10"

2077 JH
Votive, Drapery, 4½"

5165 JH
Cat, 3¾"

5937 JP
Basket, Paneled
10"

1962 JH
Pitcher, Button & Arch
4"

2835 JP
Basket, Wildflower
7"

Green Apple Stretch

Spring—the perfect time to introduce Fenton's newest color, Green Apple Stretch. Inspired by Florentine Green from the 1920s, this fresh new color blends perfectly with the lively shades now popular in home decor. A delicate "Pansy Morning" design by Stacy Williams enhances the sparkling Green Apple color ...simply delightful when paired with Celeste Blue Stretch.

2759 JH
Rose Bowl, 3½"

5220 JQ
Pig, 3" w.

7327 JQ
Hose Bowl, 5½" w.

5405 JQ
Fairy Light
5"

9144 JD
Ringholder, 3" w.

7108 JQ
Box, Paneled
6"

5966 JP
Bell, Priscilla, 4½"

5937 JQ
Basket, Paneled
10"

1962 JQ
Pitcher, Button & Arch
4"



F E N T O N

Handcrafted American Glass Artistry

2004 JUNE SUPPLEMENT

100 YEARS



1905 • 2005

heirloom memories

Fenton Art Glass begins its 100th anniversary celebration with a tribute to company founder Frank L. Fenton. His vision of providing unique handcrafted works of art on glass became a reality on May 4, 1905. With Frank's \$280, his brother John's \$4.65, and additional funds raised by stock sales, they started their business in rented space at the Haskins Glass Company building in Martins Ferry, Ohio. Initially, they bought glass blanks on which they painted decorations but soon had trouble obtaining glass from other companies. They decided to make their own glass, and, by January, 1907, the Fenton Art Glass factory in Williamstown, West Virginia was in full production.



Marked on bottom:
F.L. Fenton
Founder
1905



Founder's Water Set

Frank L. Fenton's original pencil sketch of a unique design pitcher tested the talents of mould designer Jim Saffell, Director of Design Nancy Fenton, and our team of skilled mould makers, who worked to create a larger mould that reflected Frank L.'s original vision. After several modifications, the final design was ready for production. As the original sketch was done in the 1900s when Red Carnival was at its peak, it seemed only fitting to produce the first Founder's Water Set in Red Carnival glass. The Founder's Water Set blends the past with our present and future.



1905 FVN
Founder's Water Set
Pitcher (7 1/2")
and four tumblers (4")

1905 FVN
Tumbler (4")

Limited to orders placed by 11/15/04.

Aqua Opalescent Marigold Third Generation

Many members of the third generation admired the Aqua Opalescent pieces made during the early 1980s. The unique combination of Aqua color and Marigold spray evokes an elegant piece of jewelry.



5956 4P
Vase, Plume
8"

9653 4P
Rose Bowl, 4"

1135 4P
Basket, 9 1/2"



F E N T O N

Handcrafted American Glass Artistry

www.fentonartglass.com



8155 5J
Vase, Square, 7 1/2"

Marigold Fourth Generation

For the fourth generation the excitement is the simple clean shapes done in today's hottest color trend—shimmering copper, here called Marigold.



8919 5J
Candleplate
7" dia.

8953 5J
Vase, 7 1/2"

4357 5J
Compot, Dolphin
7" dia.

Looking Back on Iridescent Ware!

In mid-1907, Fenton workers were unloading a railway boxcar filled with straw used in packing glass. As one worker slowly slid the boxcar's door open, he found a disreputable-looking man fast asleep on the floor inside.

With his face covered by a slouch hat, the fellow quickly awoke, scrambled to his feet, and brushed away the wisps of straw that clung to him. "Where's the manager?" he said. "I'm gonna show ya how to make a new kinda glass."

Glass chemist and manager Jacob Rosenthal worked closely with this gentleman (we think he was John Gordon) to perfect the spraying of metallic salts on hot glass. This process created vivid iridescent hues, much like the look of oil on water.

In late 1907, Fenton Art Glass went into the marketplace with its new "iridescent ware." These were highly-patterned pressed glass articles, and they soon caught the public's fancy. Collectors prize them today as "Carnival glass," a phrase born in the 1950s when authors began to write about the glass of decades past.

For more than two decades, Fenton stationery proudly carried this phrase: "Originators of Iridescent Ware." And to think it all began with a fellow who looked like a bum in a boxcar!



9456 CN
Vase, Drapery
11"-13"



Carnival Glass

Carnival glass has been a Fenton hallmark since 1907. In fact, the excitement surrounding the inception of this "rainbow" of colors on glass ensured the success of the fledgling Fenton Art Glass Company.

0094 AS
11 Pc. Carnival Assortment



2724 5J
Bowl, Lion, 8" dia.

Marigold Carnival



4253 UN
Vase, 6"

4339 UN
Basket, Georgian, 7"

5063 UN
Hippo, 3"

5058 UN
Elephant, Baby
3 1/2"

Golden Daisy on Amethyst Carnival

France Burton experimented with metallic paints to create the "Golden Daisy" motif, which coordinates perfectly with the revived Marigold Carnival.



6537 5J
Basket,
Peacock, 6"

Amethyst Carnival

This 2005 collection returns to the best of our signature treatments in a medley of highly collectible colors—Red Carnival, Amethyst Carnival and Marigold Carnival. To "raise the bar" on this coveted treatment even higher, nine of the pieces in the 2005 Carnival collection have never been done before by Fenton.



4207 CN
Box, Swan, 5" L.

4203 CN
Covered Box, Grape, 7"



4257 RN
Vase, Hobstar
& Flower
6 1/4"



F E N T O N

Handcrafted American Glass Artistry

www.fentonartglass.com



4333 RN
Basket
Hobstar & Flower, 7"

Red Carnival



5501 RN
Water Set,
Stork & Rushes, 8"
(pitcher and 4 tumblers)

5511 RN
Tumbler
Stork & Rushes, 4"

Rosemilk

Pinks and greens remain leading colors in home décor, and dreamy Rosemilk works perfectly. Pair it with greens or browns for an up-to-date look, or Violet as a romantic staple.

6536 NI
Bell, Drapery
6"

6780 NG
Candy Box, Paisley
7"

1995 N3
Slipper,
Daisy & Button, 6" l.

7689 NI
Vase, 8"

8329 BS
Basket, Footed
7 1/4"

0103 AS
19 Pc. Tulip Delight on
Rosemilk Opalescent Stretch
and Rosemilk Assortment

7739 BS
Rose Bowl, 3 1/4"

5733 BS
Basket, 9"

4200 BS
Lamp, 21"

7107 BS
Perfume, Rib Panel, 7"

5365 N3
Kitten, 3"

2077 NZ
Votive, Drapery
Two-way, 4 1/2"

Looking Back on Stretch Glass!

First made about 1915-16, "stretch glass," as it is now termed by collectors, was a special kind of iridescent glass. Among the original names for it are terms such as "Rainbow" and "Cobweb." Its production was an important part of Fenton Art Glass during the 1920s, and these pieces are eagerly sought by today's collectors. Now, many decades later, we make our products in much the same way.

After the glass is sprayed with a solution of metallic salts to create the iridescent finish, the items are reheated so that they can be reshaped. As a skilled glassworker, called a finisher, reshapes the item, the iridescent surface stretches, creating a myriad of striations and a texture that is a delight to see.

Rare red stretch glass from the 1920s inspired our efforts to create the Ruby Amberina color for our current production. Each piece reflects some of the great traditions of the American glass industry as well as our pride in handmade art glass.

Ruby Amberina Stretch

The intense glow of Fenton's furnaces is captured forever in the shimmering iridescence and luster inherent in the magic of Ruby Amberina Stretch. First produced in the early 1920s, the glamorous art deco style continues to captivate, and red remains the statement color in home décor.



7704 UR
Rose Bowl w/base, 5"



5956 RL
Vase, Plume, 8"

5987 RL
Bowl, Ribbed, 12" dia.

7087 RL
Box, Prism, 5 1/2"



2753 RL
Vase, 10"



F E N T O N

Handcrafted American Glass Artistry

www.fentonartglass.com



8329 RL
Basket, Footed
7 1/2"



9596 UR
Votive, Two-way, 4 1/8"



Baby Bunch

Perfect for the young or the young at heart, each baby animal figurine is handpainted with Stacy Williams' all-over floral design inspired by children's pajamas.

4202 UW
Heart Box, 6 1/2" w.
Inscribed with the signatures
of ten Fenton family members
and ALSA Logo



Special Note:

Over the years, ALS (Lou Gehrig's disease) has impacted the lives of loved ones in the extended Fenton family. A portion of the proceeds from the sale of this special edition Heart Box will be donated to the Amyotrophic Lateral Sclerosis Association. Robin Spindler created a sweeping floral butterfly design exclusive to this box. Each Heart Box bears the ALSA logo and is inscribed with the signatures of ten Fenton family members.

Treasure Boxes

Store an assortment of life's little treasures – precious mementos and cherished memories—in our functional Treasure Boxes.

0274 AS
11 Pc. Treasure Box
Assortment



5058 D1
Elephant Baby, 3 1/4"
(Violet)

5162 D6
Bunny, 3"
(Rosemilk)

5233 DY
Bear, Reclining, 3 1/4"
(Fern Green)

5148 D4
Mouse, 3"
(Autumn Gold)

0275 AS
12 Pc. Baby Bunch
Assortment



5780 T9
Heart Box w/message,
("Open your heart...Fill it with love") 4" w.
(Fern Green)

6390 NG
Shellflower, 3"
(Rosemilk)



9486 MI
Templebells, 5" w.
(Milk Glass)



6877 AQ
Art Nouveau, 4" w.
(Autumn Gold)



6390 OQ
Shellflower, 3"
(Violet)

Bells

Appealing to the eye, pleasing to the ear, delightful to decorate with and enjoy—that's the beauty of bells. Handcrafted and handpainted with care by the artisans of Fenton.

0111 AS
8 Pc. Bell
Assortment



9667 FV
Bell, Aurora, 7"
(True Blue)

6536 NI
Bell, Drapery, 6"
(Rosemilk)

7665 A9
Bell, 4 1/2"
(Golden Tulips)

4694 EF
Bell, Legacy
6"
(Butterfly Minuet)

Dewdrops

A best-seller! This huggable collection features a new Hippo, Bear and Bird to add to the fun. Each figurine is handpainted with a Robin Spindler motif of a solitary daisy graced with a precious Swarovski crystal dewdrop on the leaf.

0281 AS
18 Pc. Dewdrops
Assortment

5151 DC
"Hunny Luv" Bear
3½"

5063 DC
"Bubbles" Hippo, 3"

5058 DC
"Pretty in Pink" Elephant, 3½"

5074 DC
"Glamour Queen"
Grooming Cat, 4"

5115 DC
"Tweets" Bird, 4"

5064 DC
"Catnap" Sleeping Kitten
3½" L

Easter Baskets

Classic shapes handcrafted by Fenton artisans for your spring decorating and entertaining. Each sparkling basket is offered in a variety of candy confection colors perfect to give or to own.

0282 AS
11 Pc. Easter Baskets
Assortment

4230 YD
Basket, Paneled, 10"
(French Opalescent
w/Celeste Blue)

4230 YV
Basket, Paneled, 10"
(French Opalescent
w/Violet)

4237 KJ
Basket, Drapery, 7½"
(Celeste Blue)

8535 NI
Basket,
Diamond Lace, 5½"
(Rosemilk)

4239 NI
Basket, Drapery
7½"
(Rosemilk)

8535 OQ
Basket,
Diamond Lace, 5½"
(Violet)

8535 KJ
Basket, Diamond Lace, 5½"
(Blue)

Easter Bunnies & More

0283 AS
16 Pc. Easter Bunnies
& More Assortment

4238 OQ
Basket, Drapery
7½"
(Violet)

A delightful selection of seasonal figurines, including a special Burmese duck, all handcrafted by the artisans of Fenton. Selected pieces are handpainted with delicate floral motifs.

5169 UV
Duckling, 3"
(Burmese)

5275 N3
Bunny, 2½"
(Rosemilk)

5091 OE
Lamb, 2½"
(Violet)

5162 YL
Bunny, 3"
(Violet)

5265 ZL
Rooster, 2½"
(Green)



F E N T O N

Handcrafted American Glass Artistry

www.fentonartglass.com



Mother's Day Limited Editions



F E N T O N

Handcrafted American Glass Artistry

Two special selections! Gold-based colors, Wild Rose and Peach Crest are two of the most rare treatments ever produced by Fenton. To celebrate our 100th Anniversary we offer these two selections designed by Kim Barley. The Wild Rose vase features a stylish "watercolor" floral vine and a pure "watercolor" design adorns the Peach Crest Basket. Each piece features the 100th Anniversary backstamp and is numbered and limited to 1500 pieces.

Showcase Dealer Exclusive

The first Showcase Dealer exclusive offered for the Fenton Centennial Celebration is an exceptional butterfly bon bon box in Chocolate. This exclusive piece is individually numbered and limited to sales to Showcase Dealers through 5/15/2005. Each box will be inscribed with the signature of Randy Fenton and features our 100th Anniversary backstamp.



6884 WV
Basket, 8"
Limit: 1500



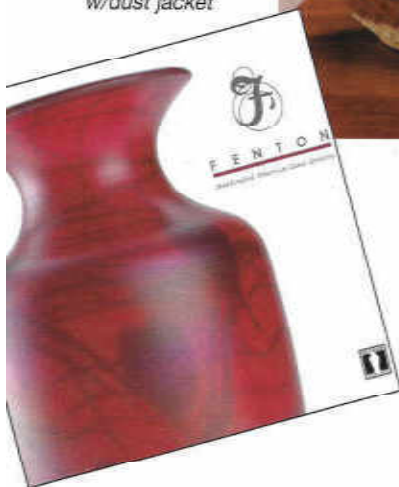
7688 WM
Vase, 5 1/2"
Limit: 1500

Easter Chocolate Limited Editions

Dating back to 1907, Chocolate glass is much requested by collectors. The bunny box is an Imperial mould purchased recently from Indiana Glass. All pieces are limited to sales through 5/15/2005 and feature our 100th Anniversary backstamp.

0288 AS
7 Pc. Chocolate
Assortment

FG973
11" x 11" hardcover
w/dust jacket



4680 CK
Rooster Box
8 1/4"



5098 CK
Bunny Box, 4 1/4"



5162 CK
Bunny, 3"



5292 CK
Rooster,
5 1/2"



6840 CK
Bon Bon, Butterfly
6 1/2"
Randy Fenton's
signature

Numbered
and Limited
to sales through
5/15/05

Nature Company

A delightful assortment of figurines representing land, air and sea. The Hippo and Dolphin are new Fenton moulds from Jon Saffell. Perfect pieces to introduce a young collector to Fenton glass.

0287 AS
15 Pc. Nature Company
Assortment



5136 ZL
Elephant, 3 1/4"



5151 NG
Bear, 3 1/4"



5087 OQ
Dolphin, 4"



5063 AQ
Hippo, 3"



5163 KJ
Bird, 4"

Coffee Table Book

Fenton glass as you've never seen it before! To celebrate our 100th anniversary, ten members of the Fenton family accepted the challenge to choose the very best pieces made by Fenton in its 100-year history for celebration in a spectacular coffee table book. Breathtaking full-color images of the finest examples of glass craftsmanship, artfully presented with all-new commentary.



The Fenton Art Glass Company
700 Elizabeth Street, Williamstown, WV 26187
304-375-6122 • www.fentonartglass.com



3287 EW
Pitcher, 7 1/2"
Limit: 1000

"Dragonfly Dalliance" on Mulberry

Mulberry glass is formed when a load of pure gold Ruby is covered with Avian Blue and carefully blown to shade from magenta to blue, a most difficult art glass treatment. Designer Kim Borley added a touch of whimsy and mystique to her vivid flora and fauna pattern—a 2 1/2" gold dragonfly, sparkling with Swarovski crystal accents, perches just inside the rim of the pitcher. Each handpointed pitcher is accented with highlights of 22k gold.



2744 EU
Vase, 8"
Limit: 1250

"Elephant Walk" on Black Marigold

Inspired by the rugged beauty of the Madras Tripple, the habitat of African elephants, designer Frances Burton created the tribute to a mother and baby elephant walking through grasslands, handpointed on Black Marigold glass. The Vase shape is an early Fenton design from the 1930s, with a fascinating diamond-patterned finish that showcases the Marigold luster, while the elephant relief is captured in rich copper tones.



"Cabernet Blush" on Blue Bismore

The vase shape was designed by John Saffer, handcrafted in Blue Bismore. Pure gold in the formula creates a delicate touch of pink on gorgeous Blue Bismore, enhanced with Frances Burton's lush "Cabernet Blush" design. Handpointed and highlighted with accents of 22 karat gold, each piece is a testament to a century of glassmaking in the age-old tradition.

3355 XP
Vase, 8"
Limit: 1000

Butterfly Koi

The long flowing fins of the butterfly koi are replicated in the olive shimmer of Fenton's glass. These pitted fish are the most elegant of the koi family yet also the most hardy. The sculpture of Jim Saffer captures their graceful beauty.



3278 FN
Fish, 5 1/2"
Limit: 2500

"Hobbit" Aquamarine Opalescent Punch Bowl

Using master acquired from Indiana Glass, Fenton has transformed Aquamarine Opalescent glass into a functional and elegant work of art. Aquamarine Opalescent glass is pressed into a hobbit pattern mold to create the shape. Then ridged and reheated to a safety finish. The delightful Punch Bowl comes with four matching Tumblers.



4231 UN
Punch Bowl Set, 12" dia
Limit: 1250

4232 UN
Tumbler, 4 1/2"

Autumn Gold

The fiery fury of Fenton's furnaces creates a "liquid gold" that when cooled, is captured forever in the honeyed shades of Autumn Gold glass. An elephant never forgets, so sculptor Suzi Whitaker created a whimsical "memory box" to store life's precious memories and treasures. The memorable Elephant Box offers up his trunk to serve as a ringholder.

9188 AQ
Tobacco Jar,
Grape and Cable
7 1/2"



5147 QM
Mallard, 5"

0508 AS
10 Pc. Autumn
Gold
Assortment



8451 AQ
Drapery Rose
Bowl, 4"



4667 E8
Grape Covered Butter, 5"



5033 L2
Elephant Box, 4"



2753 QM
Vase, Handkerchief, 10"

5733 QM
Basket, 9 1/2"



5980 QM
Fairy Light
5 1/2"



4694 QM
Bell, 6"

5058 AM
Elephant Baby, 3 1/2"

2005 Christmas Catalog

"Wheatberry" on Autumn Gold

Frances Burton celebrates the season with "Wheatberry," a vibrant design of berries, leaves and wheat on a field of Autumn Gold. Special selections include the collectible Grape and Cable Tobacco Jar and the companion Grape Covered Butter.

Caribbean Day

Glass artisan Dave Fetty developed a special process to create this spectacular vase, capturing the essence of the sea and sky of the Caribbean. Multiple layers of crystal and powdered glass in white, blue and green are carefully combined by Dave to produce this dramatic result when the piece is blown in a paste mould to eliminate seams. No two will be exactly alike ... but all will be beautiful!



4861 DB
Vase, 7 1/2"
(limit: 1500)

Mother's Love

Frances Burton has created a touching tableau of a mother giraffe overseeing her playful child. This delightful companion to the "Elephant Walk" design for 2005 adds yet another dimension to sandcarved artistry. Shimmering metallic paints complement the red gold brilliance of Marigold iridescence, bringing the African landscape to life.



7374 EU
Pitcher, 11"
Inscribed with the
signatures of nine
Fenton family members
(limit: 1500)



8199 B6
Vase, 7 1/2"
(limit: 750)

Moonstruck Bluebells

The soft touch of Aubergine Velvet frames Kim Barley's dramatic rendition of drowsy Bluebells. The rich depth and shading of the design is created by multiple layers of paint and is complemented by the elegantly arched French curl handle.

Seasons Vase Summer & Winter

In response to many requests to complete the Seasons set in Favrene, we are offering the Summer & Winter vase. The two Seasons moulds were acquired in the 1960s. They were first made by the Verlys of America Company to replicate the appeal of fine French glass with deeply embossed designs. The Spring and Autumn vase in Favrene was offered by Fenton in 1998.



Back of
9258 E2



Front of
9258 E2
Vase, 9"
(limit: 1000)

Carnival Glass

Fenton Art Glass launched America's first Carnival glass treatments in 1907, and they have remained a Fenton hallmark. Collectors worldwide search for our finest examples of this "iridescent ware" that first put Fenton on the map.

Once again we bring you the most popular of our signature iridescent treatments in a medley of collectible colors—Red Carnival, Amethyst Carnival and the difficult Marigold Carnival. As always, we present pieces not made previously in these Carnival colors or shapes.



6605 NA
Lamp, Ruffled Shade, 17"

0585 AS
12 Pc. Carnival Glass
Assortment



6817 5J
Bowl, Grape, 6" dia.

5751 5J
Vase,
Paneled Grape, 8 1/4"

9832 5J
Basket, 6"

Marigold Carnival

Amethyst Carnival



5945 NE
Covered Box
Daffodil, 6"

5044 NA
Kitten, 3"

5389 NE
Boat, 5" l.

Kitten is
inscribed with
signature of Shelley Fenton



F E N T O N

Handcrafted American Glass Artistry

www.fentonartglass.com

Red Carnival



5186 RN
Hen on nest, 5"



5266 RN
Turtle, 4"



9458 RN
Vase, Swan, 8"

4269 NA
Pitcher, Medallion, 3 1/2"



5021 NA
Pig, 4"

Cranberry Blossom on Amethyst Carnival

Robin Spindler's Cranberry Blossom was inspired by our medley of rich Carnival colors. Striking cranberries and field blossoms reflect the red, gold and amethyst hues highlighted in the iridescent finish.

The Decanter Set is sold with two wine goblets. Additional wine goblets are available for purchase in pairs.



4340 NE
Decanter Set,
Moon & Star, 12 1/2"
(Includes decanter
and two wine goblets)



4263 NE
Wine Goblet, 4 1/2"
(Two Goblets included
with Decanter Set)

Marigold

It just gets better and better. Our skilled craftsmen have slipped back in time to revive the mysteries of this famous iridescent treatment. The result works perfectly with the warm spice palette in today's home décor. Our Marigold grouping complements Aubergine for a dramatic display.

2753 5J
Vase,
Handkerchief
10"



0586 AS
10 Pc. Marigold and
Golden Orchids
Assortment

2955 JN
Vase, 9"

Showcase Dealer Exclusive

A special delight for bell collectors—rare Marigold with delicate orchids. Each piece is individually numbered and limited to sales to Showcase Dealers through May 15, 2006. Part of the Family Signature Series, each bell is inscribed with the signature of Christine Fenton.



7671 NF
Bell, 6 1/4"
Inscribed with the
signature of
Christine Fenton

Golden Orchids on Marigold

The "liquid gold" color of the glass inspired Frances Burton to design stately orchids that seem to float over the surface. The shapely selections feature clean lines to complement the simple elegance of the orchids.

8155 NF
Vase, Square, 7 1/4"



7537 NF
Basket, 8"



5163 NF
Bird, 4" l.



4388 5J
Nut Dish, Panel & Ball, 6" dia.



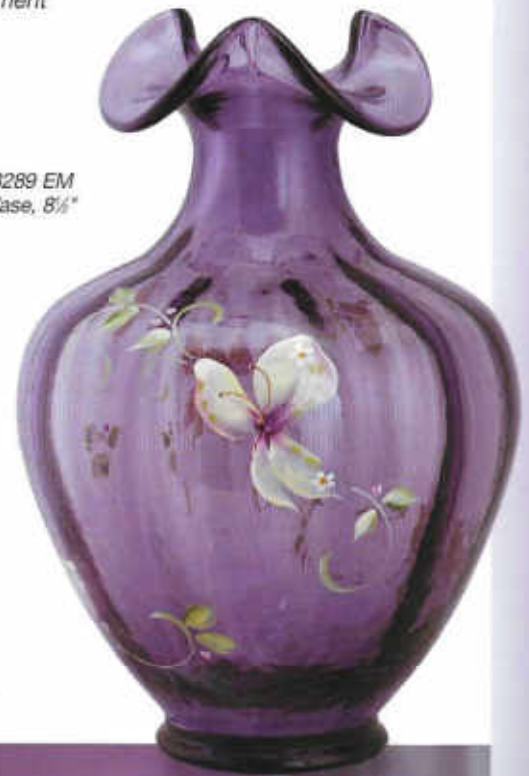
4694 EM
Bell, 6"

5066 OQ
Hummingbird, 4 1/4"

7150 EM
Candy Box, 4 1/4"

0591 AS
10 Pc. Butterfly Kiss
Assortment

3289 EM
Vase, 8 1/2"



Butterfly Kiss

Stacy Williams' refreshing Butterfly Kiss design enhances Violet with a breath of simplicity. Delightful when paired with Rosemilk or our new Silken Sand.



4353 OE
Vase, Swung, 11-13"

6656 EM
Vase, Adam's Rib
9"



2777 EM
Basket, 8"

5064 EM
Sleeping Kitten, 3 1/4" l.



8963 EM
Vase, Trumpet
7"



Autumn Gold

The fiery fury of Fenton's furnaces creates a "liquid gold" that when cooled is captured forever in the honeyed shades of Autumn Gold.



6780 AM
Candy Box, 7"



1995 AM
Slipper, Cat, 6" l.



4353 A1
Vase, Swung
11"-13"



RETIRED

4552 AM
Cakeplate, 12" dia.

5086 AM
Hummingbird, 4 1/2"



5987 RL
Bowl, Ribbed, 12" dia.



F E N T O N

Handcrafted American Glass Artistry

www.fentonartglass.com



5088 UR
Apple, 2 1/4"

5066 UR
Hummingbird, 4 1/4"

4357 RL
Dolphin Comport
6 1/4" dia.



5041 UR
Cardinal, 4" l.

0597 AS
15 Pc. Ruby Amberina Stretch
Assortment

9596 UR
Votive, Two-way
3 1/4"



5074 UR
Cat Grooming, 4"

Ruby Amberina Stretch

The intense glow of Fenton's furnaces is captured forever in the shimmering iridescence and luster inherent in the magic of Ruby Amberina Stretch. First produced in the early 1920s, this glamorous art deco style continues to captivate, and red remains the statement color in home decor. Seven new items add to the drama.



2753 RL
Vase, Handkerchief, 10"

6539 RL
Basket, 10"



7773 RL
Vase, Swing, Empress
6"-7"





8290-45
Sloper, 6"
\$14.50



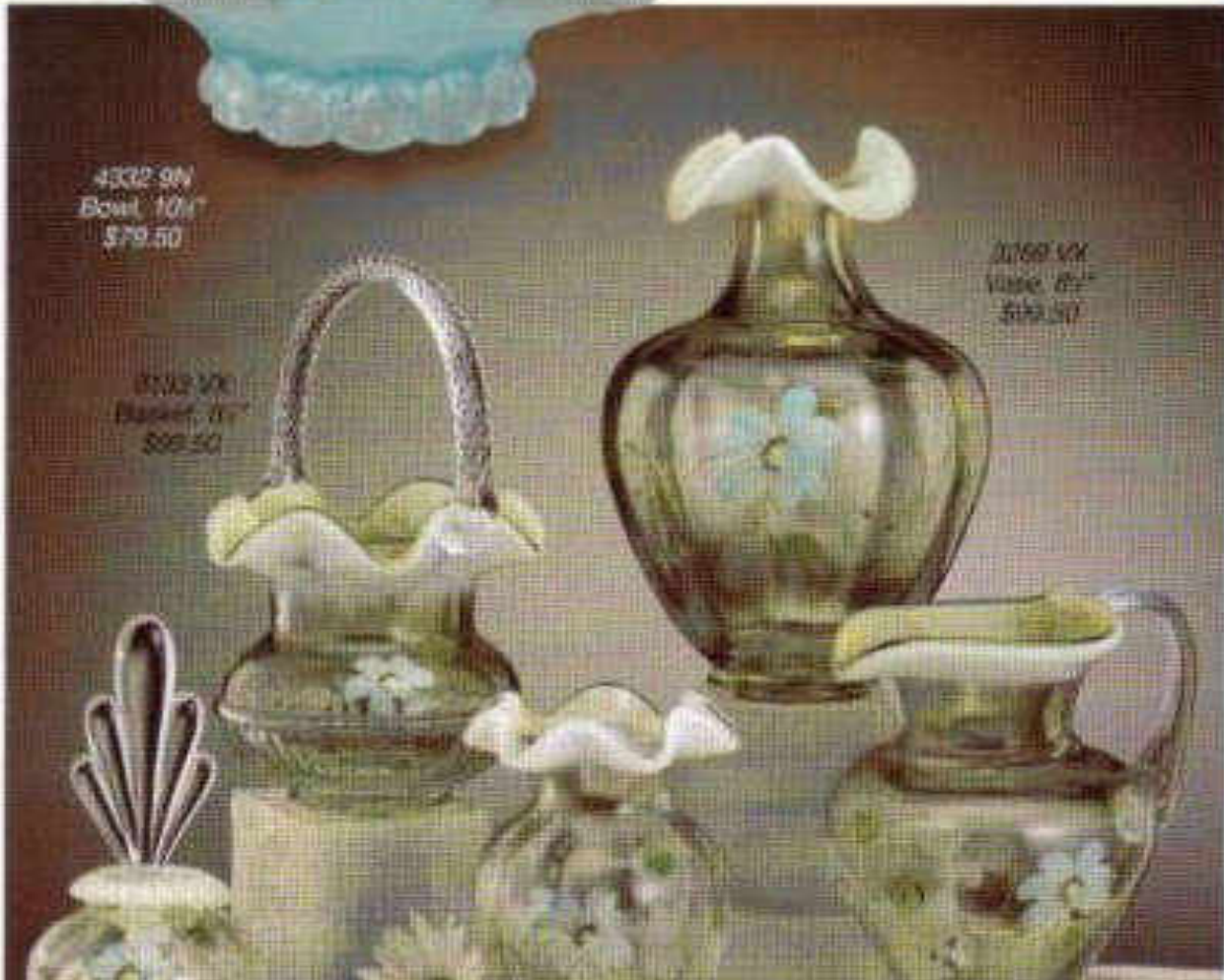
2753 9N
Vase,
Handkerchief, 10"
\$85.00

Dairy Blue on Silken Sand

Frances Burton's delicate "Dairy Blue" design with melon berry accents trails across a field of pale gold Silken Sand, adding a simple touch of beauty to this entrancing new color.



4332 9N
Bowl, 10 1/2"
\$79.50



8502 10N
Bowl, 8 1/2"
\$69.50

3069 5N
Vase, 8 1/2"
\$69.50

Our sparkling Emerald Green candle jar conceals a long lasting candle perfectly. Also use it as a candy box ... or even to keep your pet's favorite treats nearby! Finally, it can be used to hold a pretty bouquet of flowers.



F E N T O N

www.fentonartglass.com



Catalog Exclusives

7104 EY
Candy Box/
Candle Jar, 7 1/2"
\$55.00
(Lynn Fenton)

5386 TM
Dragon, 3 1/4", \$29.50
(Nancy Fenton)



Iridized Emerald Green glass has a unique character. The sparkling intaglio design Candle Jar by Jon Saffell is just right for a long-lived candle. The diminutive Dragon figurine—sculptor Suzi Whitaker's newest creation—is highlighted with glitter to delight any youngster or adult! **Each is numbered and inscribed with the signature of a Fenton family member.**

Handcrafted with an historic Fenton mould from the 1930s, this beautiful Azure Blue Nut Dish is yours **FREE** with a Fenton purchase of \$100 at the dealer whose name appears on the front of this catalog. Supplies of this special item are limited.

FREE
with any
\$100 Fenton
purchase



Clip the coupon
and visit your
Fenton dealer
soon!

4388 ML
Nut Dish, 6"
\$37.50 value!

Effusion Lamps from La-Tee-Da!

La-Tee-Da

Fenton Art Glass and La-Tee-Da have teamed up to present a signature set of high quality effusion lamps. La-Tee-Da is recognized for providing wonderfully aromatic oils that burn cleanly to clear the air. Two industry leaders bring you colorful unique bottles with an inviting selection of scents.

0159 AS

8 Pc. La-Tee-Da Assortment

A. P004 RE - Baby Window Optic, Rosalene, 5 1/2"

B. P008 N8 - St. Rib, Aubergine, 7 1/2"

C. P007 BR - Swirl, Burmese, 5 1/2"

D. P008 RU - St. Rib, Ruby, 7 1/2"

0161 AS

Six Shooter
Fragrance Assortment



A

B

C

D



E

0160 AS

8 Pc. La-Tee-Da Assortment

E. P005 NE - Zipper, Aubergine, Iridized, 6"

F. P006 AQ - Honeycomb, Gold, Iridized, 5 1/2"

G. P005 AQ - Zipper, Autumn Gold, Iridized, 6"

H. P006 RN - Honeycomb, Ruby, Iridized, 5 1/2"

0162 AS

Top 12
Fragrance Assortment (16 oz.)



F

G

H

Fenton Carnival Glass: Yesterday and Today

In October 1907, the fledgling Fenton Art Glass Company entered the marketplace with an exciting new line of glassware. Called "Iridescent Ware," this new product featured vivid, changing metallic hues on highly-patterned pressed glass articles. The glassware was popular from 1908 to about 1915, and Fenton's "Iridescent Ware" enjoyed great success, even being exported to many countries around the world.

By the 1950s, this glassware was being eagerly sought by American collectors. Stories abounded that the glass had been used for prizes in midway games, and the phrase "Carnival glass" was coined. Collector clubs were formed, and there has been great interest ever since. When Fenton resumed production of Iridescent glass in 1970, we decided to call it "Carnival glass" and we have done so ever since.

The secret—both in 1907 and now—of Fenton Carnival glass is the special spray of metallic salts on the glass while it is very hot. Using today's technology, Fenton glass technologists have rediscovered the striking vivid effects of some of the sprays first used in 1907. We continue to make Carnival glass by hand, the "old-fashioned" way, and we never cease to marvel at the rainbow of colors and the interesting hues.

Fenton Art Glass is among the world's foremost producers of handmade colored art glass, and our Carnival glass is second to none. We regard the enthusiasm of today's collectors as a great tribute to company founder Frank L. Fenton, who first ventured into the marketplace with "Iridescent Ware" a century ago.

EXCLUSIVE DESIGNS

SUPERIOR FIN

ORIGINATORS OF IRIDESCENT WARE

THE FENTON ART GLASS CO.

MANUFACTURERS AND DECORATORS OF
TABLEWARE AND NOVELTIES

WILLIAMSTOWN, W. VA.



Company letterhead, ca. 1910, proclaimed us "Originators of Iridescent Ware."

The press shop headed by Elmer Goosman (dark shirt, second from right) was likely making No. 1124 (Butterfly and Berry) pitchers and tumblers about that time.



A spray of metallic salts creates the vivid iridescence.

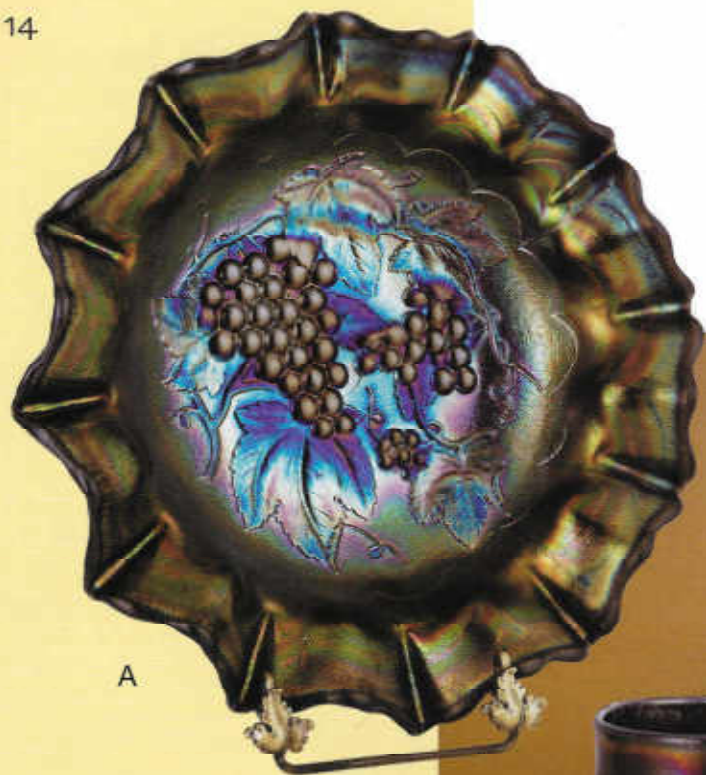
Carnival



 **F E N T O N**
Handcrafted American Glass Artistry
www.fentonartglass.com

Carnival Glass 2007

To celebrate the centennial of Carnival glass, we have rediscovered and improved much of the original chemistry and techniques for iridizing glass. We salute the past and mark our place in the present with a panoply of Carnival glass colors in a wide variety of shapes—from the classic to the contemporary. These pieces are surely the heirlooms of the future.



A



B



C



D



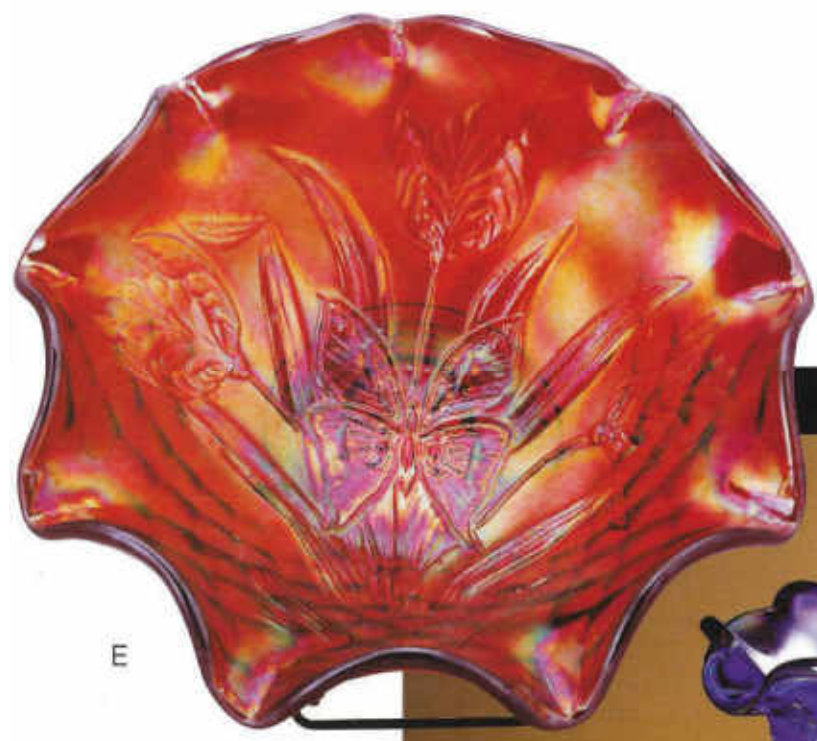
E

- A. 6513 3Z - *Bowl, Grape & Vine, 11"
- B. 4391 9E - Vase, Peacock, 10"
- C. 8180 9E - Urn, Dancing Ladies, 9"
- D. 4265 3Z - Water Set, Pineapple, 8 1/2"
- 4267 3Z - Tumblers (2), 4 1/4"
- E. 6540 UR - Candy Box, Grape Leaf

* Stand not included

- A. 8237 KU - "Bowl, Heart/Vine, 8 1/2"
- B. 4257 KU - Vase, Hobstar, Floral, 6 1/2"
- C. 4395 4Q - Rose Bowl, Grape/Cable, 3 1/4"
- D. 4185 KU - Vase, Mayflower, 9"
- E. 4386 RC - "Bowl, Butterfly & Tulip, 12" dia.
- F. 4601 KZ - Punch Bowl Set,
Panel Grape, 9 1/4"; Punch Cup, 2" (8 w/set)
4642 KZ - Punch Cup

* Stand not included



 **F E N T O N**
Handcrafted American Glass Artistry
www.fentonartglass.com

0163 AS
9 Pc. Carnival
Assortment



Golden Pods on Red Stretch

Inspired by the look of flowers from the Art Nouveau period, Kim Barley created this simple, yet exciting and elegant handpainted floral motif. Sweeping strokes and sheer colors reflect the artistry of Fenton's talented decorators.

Red Stretch

All the fire of Fenton's furnaces is captured in this vivid red glass, reminiscent of our initial production in the 1920s. After being iridized with a spray of metallic salts, the glass is brought to its final shape. This process creates the "stretch" look so popular with collectors and decorators.

A

D

B

C

E

F

G

0170 AS 7 Pc. Red Stretch Assortment

- A. 8155 AF - Vase, Square, 7½"
 - B. 8155 RL - Vase, Square, 7½"
 - C. 5363 AF - Songbird, 3½"
 - D. 4329 RL - Bowl, Footed, 8½" dia.
 - E. 4179 UR - Vase, Heritage, 5½"
 - F. 6529 RL - Vase,
Colony, Swung, 10"-12"
 - G. 4198 AF - Basket, 7½"
- Lynn Fenton Signature

54

Carnival Glass

Four new items continue the appeal of this collector favorite.



- A. 4180 4Q - Vase, Tropical Bird, Aubergine, 9 1/2"
- B. 8186 3Z - Compot, Persian Medallion, Black, 6" (Stand not included)
- C. 8189 3Z - Bowl, Persian Medallion, Black, 8 1/2" dia.
- D. 4268 PG - Vase, Bird, Raspberry, Ruby, 7 1/2"

- E. 4280 ZW - Candy Box, Sweet, 6 1/2"
- F. 5290 ZW - Slipper, Cat, 6" L
- G. 4388 ZW - Hat Dish, Pearl/Black, 6"
- H. 5018 ZW - Cat, 3 1/2"
- I. 5052 ZW - Vase, Beauty, 7 1/2"
- J. 5071 ZW - Tray, Shark, 11 1/2" dia.
- K. 5150 ZW - Whale, 5 1/2" L
- L. 5155 ZW - Vase, Square, 7 1/2"
- M. 5934 ZW - Vase/Vase, Biking, Diamonds, 5" x 6"
- N. 9144 ZW - Ringholder, 3"

Indigo Blue

Ten new items, all undecorated, in this trendy color, extend the fashion line of this popular hue. A portion of the Whale figurine proceeds will go toward our town's Swimming Pool Fundraiser part of the Williamsstown Health Initiative.



FENTON
Handcrafted American Glass Since 1907
www.fentonartglass.com