

American Craftsman Series

THE TANNER

This is No. 11 in a series of Annual Craftsman Plates made by hand in limited number in the final tradition of Fenton Art Glass. On December 31, 1980, the moulds for this Collector's Plate will be destroyed, creating an ever-growing value for the plates with the passage of time. These specially designed plates commemorate Early American Craftsmen and their role in the growth of America.



9380 CN
80 CRAFTSMAN PLATE

1980 Catalog

Carnival Hobnail

Just the beginning of a new collectible. A Carnival Glass collector's dream. Handsome pattern in iridescent glass, and the depth of selection in Fenton Hobnail moulds is tremendous.

ON OUR TABLE—page 4, column 2



3628 CN
COMFORT

3700 CN
OVAL CANDY BOX

3854 CN
4 1/2" VASE

5607 CN
BELL

5100 CN
CAT

5158 CN
OWL

3795 CN
TOOTHPICK

3756 CN
BUD VASE

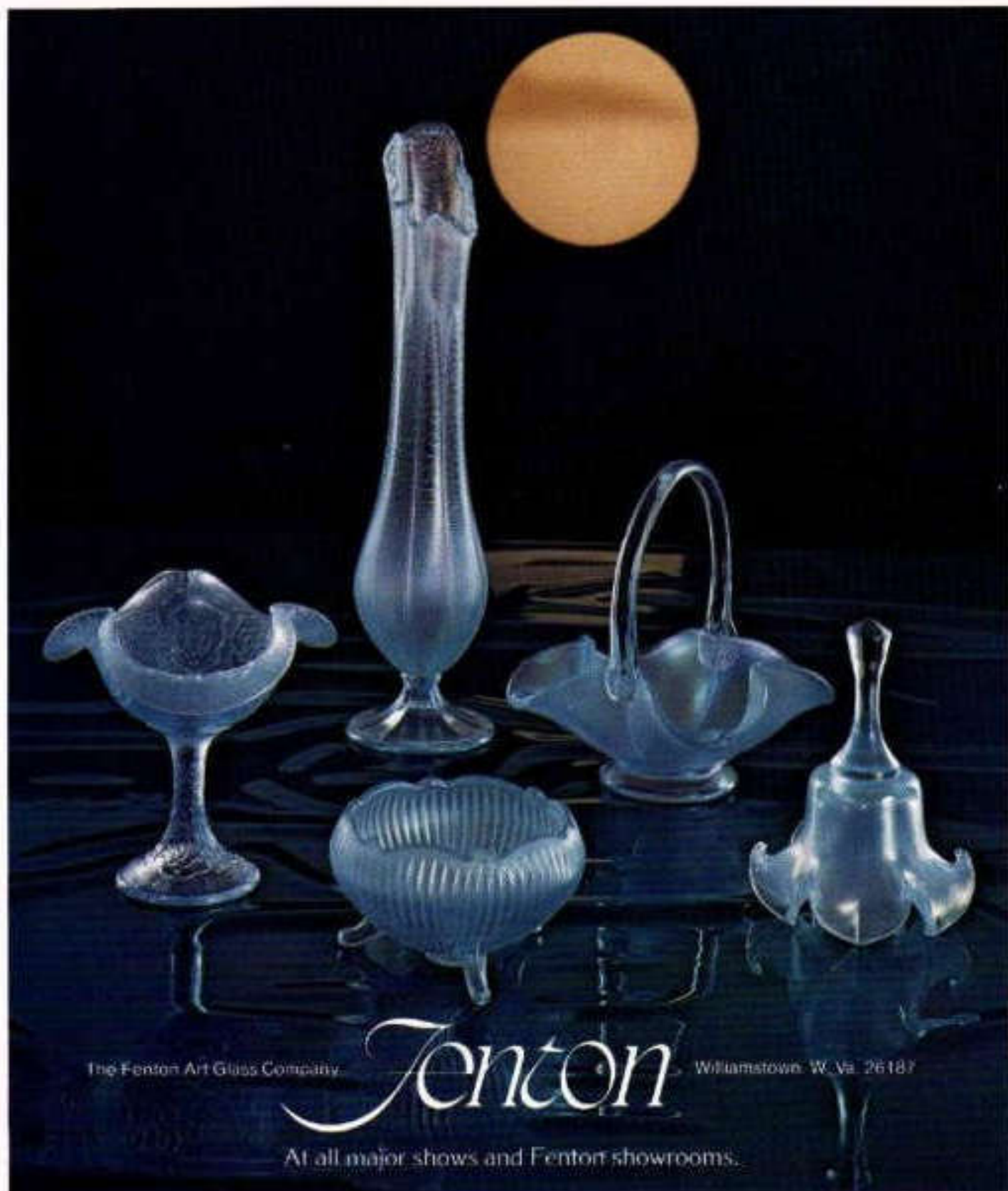
3337 CN
7" BASKET

Moonlight...soft music... beautiful memories captured in Velva Blue.

1980 Catalog

Inspired by the popularity of 1980's special-issue Velva Rose, the Fenton artists have created this new vision of elegance and romance. Velva Blue is an

iridescent stretch glass treatment, available in these and other pieces of fine art glass from Fenton.



The Fenton Art Glass Company

Fenton

Williamstown, W. Va. 26187

At all major shows and Fenton showrooms.



8280 CN
CHRISTMAS PLATE W/STAND



8280 WS



8280 BA

Christmas In America 1980

Christ Church – Alexandria, Virginia (Protestant Episcopal)

Completed in 1773, this historic house of worship, the home church of President George Washington and General Robert E. Lee, has heard the prayers of many United States' presidents, statesmen and foreign leaders.

On order blank – page 3, column 3.

THIS IS THE ELEVENTH IN A SERIES OF TWELVE LIMITED EDITION COLLECTOR'S PLATES



"The Little Brown Church in the Vale"
Bradford, Iowa



"The Old Brick Church"
Isle of Wight County, Virginia



"The Two Horned Church"
Marietta, Ohio



"St. Mary's in the Mountains"
Virginia City, Nevada



"The Nation's Church"
Philadelphia, Pennsylvania



"Birthplace of Liberty"
Richmond, Virginia



"The Old North Church"
Boston, Mass.



"San Carlos Borromeo de Carmelo"
Carmel, California



"The Church of the Holy Trinity"
Philadelphia, Pennsylvania



"San Jose Y Miguel De Aguayo"
San Antonio Texas

Velva Rose

First introduced by Fenton in the 20's, this iridescent stretch glass treatment is being brought back this year to help commemorate our 75th anniversary. Some of these patterns were also first made in the 20's while some are either entirely new or adaptations of old patterns.

Please Note: This grouping in Velva Rose will be made only in 1980 and each piece will bear the mark



On order blank — page 3, column 3.



7505 VR
5 PC. EPERGNE SET



7580 VR
DOLPHIN CANDY BOX



7562 VR
BELL (STAR CRIMPED)





9056 VR
BUD VASE



7527 VR
FOOTED COMFORT



7572 VR
CANDLEHOLDER



9422 VR
PERSIAN MEDALLION
COMFORT



7551 VR
DOLPHIN FAN VASE



7536 VR
8 1/2" BASKET



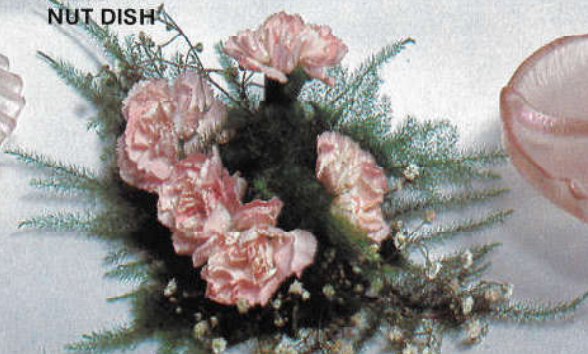
7529 VR
NUT DISH



7526 VR
6 1/2" BOWL



8408 VR
PERSIAN MEDALLION 3 PC.
FAIRY LIGHT



7516 VR
SALVER

Fenton Stretch Glass

..... and now there are two!

Velva Rose and Velva Blue

Inspired by the tremendous success of last year's special issue of Velva Rose.

On order blank - page 2, column 3.



9101 VR
24" GONE WITH THE WIND LAMP



7505 VB
5 PC. EPERGNE SET



5171 VB
BUTTERFLY ON STAND



9128 VR
7½" SHALLOW BONBON

Velva Blue

Iridescent Stretch Glass by Fenton

Inspired by the tremendous success of 1980's special issue of Velva Rose. This new color of Velva Blue will feature the top selling items from last fall plus 9 "new" shapes, some really new and some from Fenton's early history.

On order blank — page 2, column 3.



9101 VB
POPPY 24" GONE WITH
THE WIND LAMP



9056 VB
BUD VASE



7536 VB
8½" BASKET



9422 VB
PERSIAN MEDALLION COMFORT



7526 VB
6½" BOWL



5171 VB
BUTTERFLY ON STAND



9128 VB
SHEFFIELD
7½" SHALLOW BONBON

Velva Blue—this base color was originally made by Fenton 50 years ago . . . but adapted today to the unusual technique of stretch glass.



7505 VB
5 PIECE EPERGNE SET



9488 VB
PANELED CANDY BOX



9459 VP
14" PANELED VASE



7562 VB
BELL (STAR CRIMPED)



8405 VB
BEADED FAIRY LIGHT



9134 VB
BUTTERFLY & BERRY
6½" BASKET



9248 VB
ROSE 10½" BOWL



9270 VB
ROSE CANDLEHOLDER



8250 VB
MINIATURE
ROSE BOWL

Velva Rose

First introduced by Fenton in the 20's, this iridescent stretch glass treatment was revived last year with tremendous success. The 1981 edition is all new and ready to spark your sales to even greater heights.

On order blank—page 2, column 3.



9101 VR
POPPY 24" GONE WITH
THE WIND LAMP



9432 VR
11" PANELED BASKET



9270 VR
ROSE CANDLEHOLDER



8250 VR
MINIATURE ROSE BOWL



9066 VR
WHITTON BELL



8405 VR
BEADED FAIRY LIGHT



The Fenton trademark.
Your assurance of
quality, workmanship
and salability.



9488 VR
PANELED CANDY BOX



9455 VR
PANELED HANDKERCHIEF VASE



4801 VR
DIAMOND LACE
4 PC. EPERGNE SET



9134 VR
BUTTERFLY & BERRY
6½" BASKET



8431 VR
WATER LILY COMPORT



9453 VR
FABERGÉ BUD VASE



9423 VR
6" FLORAL BOUQUET VASE

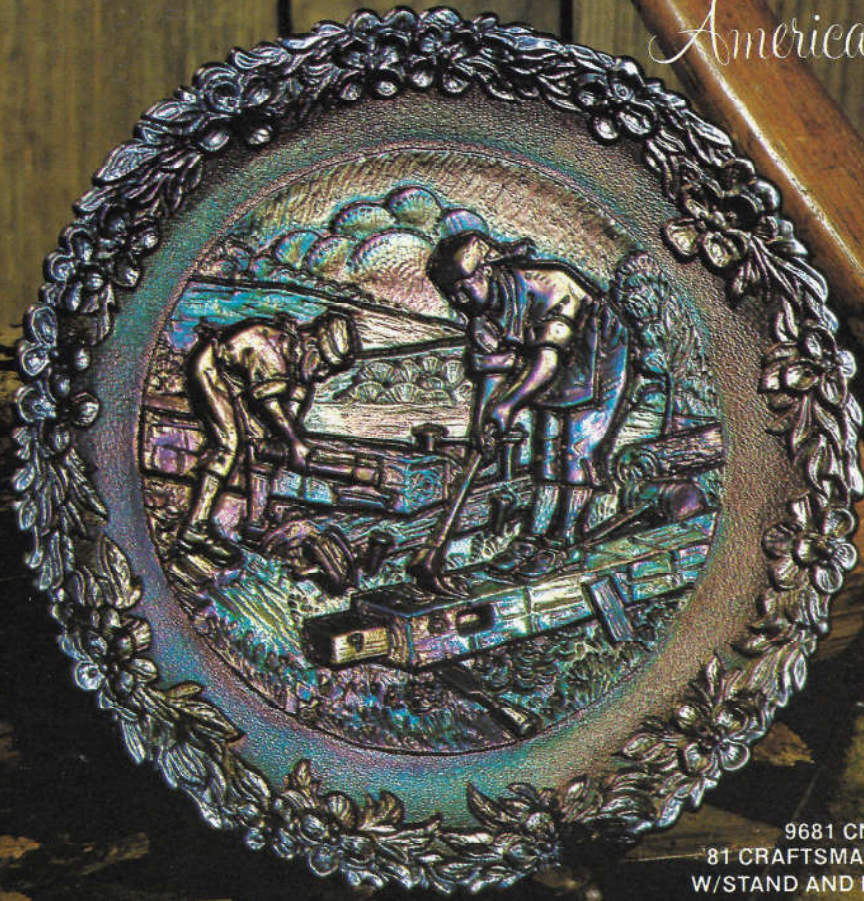


9248 VR
ROSE 10½" BOWL



9128 VR
SHEFFIELD
7½" SHALLOW BONBON

American Craftsman Series



"THE HOUSEWRIGHT"

This is No. 12 and the final edition in the annual Craftsman Plate Series. Made by hand in limited number the moulds will be destroyed on Dec. 31, 1981. These plates commemorate Early American craftsmen and their role in the growth of America.

9681 CN
81 CRAFTSMAN PLATE
W/STAND AND BOOKLET

8208 CN
LITTLE BROWN CHURCH
CANDY BOX



3539 CN
SPANISH LACE
8½" BASKET



5171 CN
BUTTERFLY ON STAND



5169 CN
DUCKLING



9299 CN
OWL RING TREE



9465 CN
STRAWBERRY
BELL



3527 CN
SPANISH LACE
FOOTED COMFORT



5101 CN
KISSING KIDS



9454 CN
STRAWBERRY
BUD VASE

Carnival Collectibles by Fenton

On order blank—page 3, column 3.



8281CN
CHRISTMAS PLATE
W/STAND

Christmas In America 1981

Mission of San Xavier Del Bac, Tucson, Arizona

Founded in 1700, the present structure was rebuilt by the Franciscans in 1797 to become La Paloma Blanca Del Desierto, "The White Dove of the Desert", to the Indians for whom it was built. Acclaimed as the finest example of mission architecture in the United States.

No. 12 and last in the series.

On order blank - page 3, column 3



8281WS



8281BA



"The Little Brown Church"
in the Vale"
Bradford, Iowa



"The Old Brick Church"
Isle of Wight County,
Virginia



"The Two Horned Church"
Marietta, Ohio



"St. Mary's in the Mountains"
Virginia City, Nevada



"The Nation's Church"
Philadelphia, Pa.



"Birthplace of Liberty"
Richmond, Virginia



"The Old North Church"
Boston, Mass.



"San Carlos Borromeo
De Carmelo"
Carmel, California



"The Church of the Holy Trinity"
Philadelphia, Pennsylvania



"San Jose y Miguel
De Aguayo"
San Antonio, Texas



"Christ Church"
Alexandria, Virginia

THE FIRST ELEVEN PLATES
IN A SERIES OF TWELVE
LIMITED COLLECTION PLATES

*Moulds Now Destroyed

Carnival Collectibles by Fenton

© Fenton Art Glass Company, 1982

1982 Catalog



8418 CN

"GRIST MILL" CUPBER & MESS PLATE
1st in series of 4 - Limit 2500 pieces



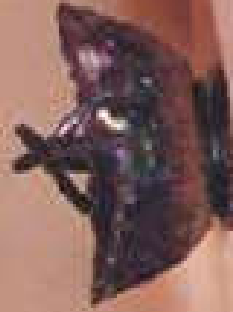
3455 CN

FABERGE BLOU VASE



2266 CN

SABLE ANCHER BELL



1030 CN

DAISY & BUTTON OVAL BASKET



9104 CN

BUTTERFLY & BERRY BASKET



0230 CN

MINIATURE
ROSE BOWL



0423 CN

CLEFIDOR VASE



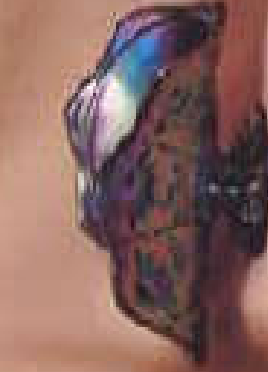
0433 CN

70'S STRAWBERRY BASKET



8428 CN

STRAWBERRY COMFORT



8034 CN

MINIATURE NAPKIN
HOLDER



8404 CN

FABERGE FAIRY LIGHT

White Satin Carnival:

Carnival collectors seek the unusual in carnival glass treat items. For them, we present White Sat in Carnival. Close in appearance to Mother of Pearl, this very pink highlights give off a soft, alluring glow.

1983 catalog



Shown below is our new packaging for all Carnival Limited Editions.

Craftsman Stein and Bell:

First produced in the 1970's, these intricately moulded pieces were designed to honor the first glass craftsmen. A gatherer, blower and finisher are depicted using the tools and processes of the early 1700's. Our glass workers make glass today with the same tools and time-honored methods.



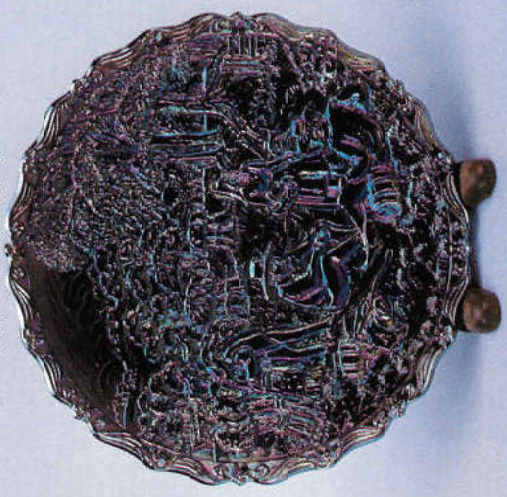
9643 WT
Craftsman Stein
Limited to 1500 pieces



9644 WT
Craftsman Bell
Limited to 3500 pieces

Carnival Glass: Always a favorite of Fenton Art Glass Collectors, this year's offering is especially exciting. Four of the patterns are being offered 1983-1984 General Catalog

Limited to 3,500 Pieces.
No. 2 in a series of 4.



8417 CN
"Harvest" Currier & Ives Plate



5160CN Fawn
9150CN Fine Cut & Block Bud Vase
8695CN Aztec Toothpick



8653CN Sunburst 4 1/2" Vase
8636CN Sunburst 7" Basket Double Crimped



8650 CN 10" Lucille Bud Vase
8625 CN 6 1/2" Puritan Footed Comport



8686 CN Sunburst Covered Candy



9066CN Whifton Bell

Carnival Glass:

A special treat for collectors—"Cobalt Marigold Carnival". A secret formula that was used at Fenton over 75 years ago creates this unusual iridescent effect on hot Cobalt glass. Varying colors and changing hues are created so that each piece is individual. No two are exactly alike. The soft, gold patina is predominant on the Cobalt giving each piece an aura of rarity and high value.



8233 NK
Orange Tree and Cherry Bowl 6" Orangetree Candleholders (Pr.)



8629 NK
6" Handled Nut Bowl



9623 NK
Persian Medallion Compot Butterfly Covered Candy



8268 NK
Miniature Lovebird Bell

8264 NK
Faberje Bell

5158 NK
Elephant



8415 NK
Currier & Ives Plate #3



5151 NK
Bear Cub



8654 NK
7 1/2" Vase



(tilted to show interior pattern)

8442 NK
3-Toed Nut Dish

Iridescent:

Carnival treatment that has only been offered once before in a limited edition. The ruby glass is iridized, but we have added an extra step to develop the soft, satin patina.

SAINT ELIZABETH ANN SETON

The first native-born American to be canonized by the Catholic Church. Founder of the Sisters of Charity, the first American women's religious society she began by opening an elementary school for young girls in 1809.

HELEN KELLER

Deaf and blind, Helen Keller learned language, writing and speaking that demanded "the strength of a piano mover and the determination of a Prohibitionist." She devoted her life to helping others who, like herself, could neither hear nor speak.

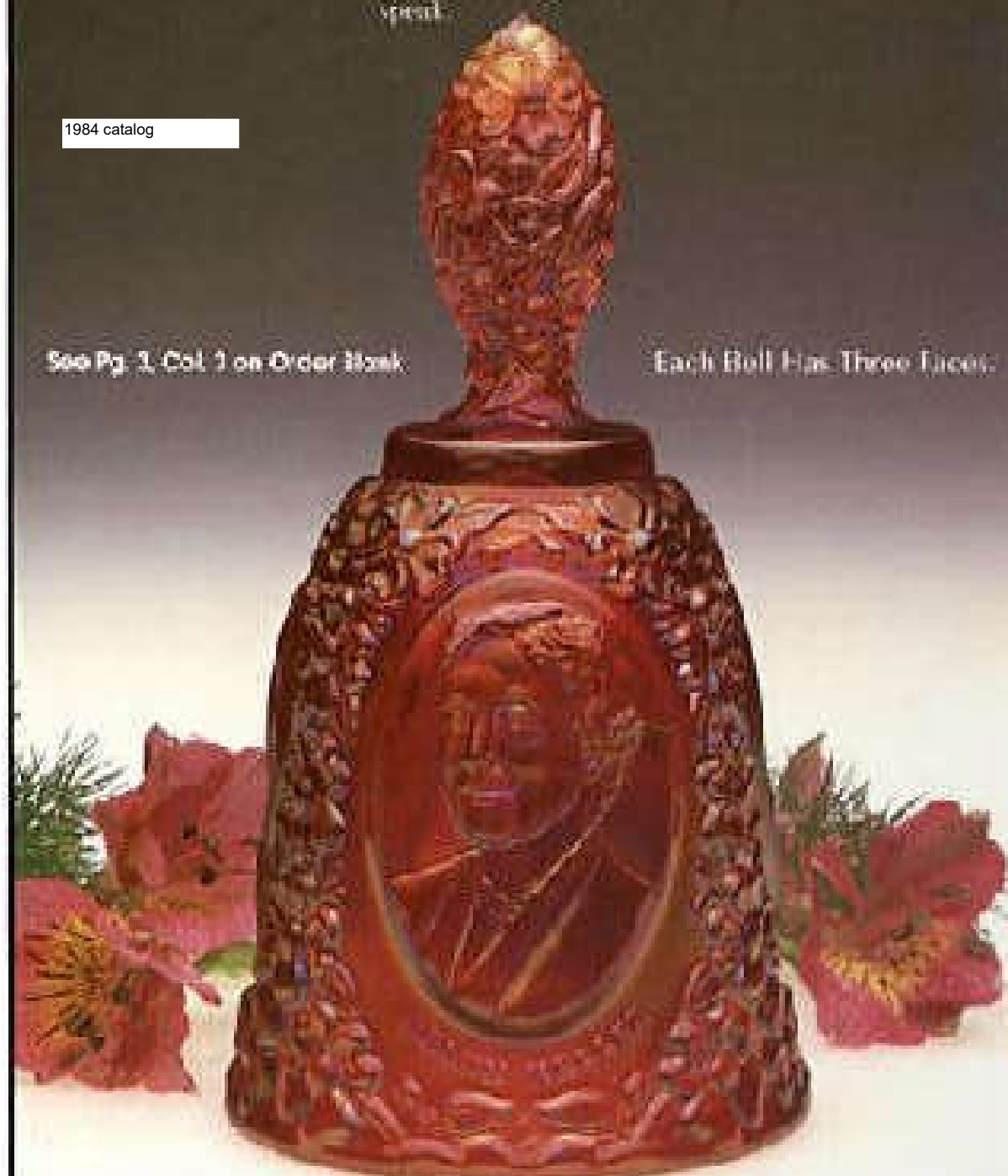
AMELIA EARHART

The first woman to cross the Atlantic Ocean by air and the first woman to fly it alone. Having received the Distinguished Flying Cross, she possessed an indomitable spirit that pioneered a new path for women in American society.

1984 catalog

See Pg. 3, Col. 1 on Order Blank.

Each Bell Has Three Faces.



9163 UR
Famous Women Bell
Limit 3500

F

F E N T O N
CLASSIC

Cobalt Marigold

from the original Fenton formula.

Last year's offering was so successful, we were prompted to continue the Cobalt Marigold treatment—but on all new shapes! Each piece was selected for its ability to show off the lovely iridescent treatment.

We especially direct your attention to the Garden of Eden plate and bell. Designed by Hal Reed exclusively for Fenton, each depicts the temptation of Adam and Eve while God hovers above in warning. Could well be the most sought after of all Collectors' Plates! Both are a *must* for Fenton Carnival and Plate and Bell collectors.



5111 NK
Clown

9665 NK
Bell, Beauty, 6½" h.



9637 NK
Basket, Leaf w/Butterfly, 6" h.



8667 NK
Pitcher, Sunburst, 8½" h.

8633 NK
Basket, Sunburst, 7¼" h.



8414 NK
Plate, Currier & Ives, 8" w.
#4 in a series, "Winter Pastime"



5147 NK
Mallard

5159 NK
Spaniels

5134 NK
Snail



9614 NK
Plate, Garden of Eden, 8" w.

9663 NK
Bell, Garden of Eden, 6 3/4" h.

3 Sides Shown



F E N T O N

Carnival

Iridescent glass, the original name for Carnival glass, was The Fenton Art Glass Company's major product from its inception in 1907 until 1920. This unique glass was first introduced nationally by Louis Comfort Tiffany in the 1890's. It is produced by spraying various shades of glass with a metallic salt mixture while the glass is still very hot, creating a permanent rainbow across the surface of each piece.

Carnival glass authorities have acclaimed Fenton's reproduction of this treatment as the best representation of the antique iridescent formula ever produced. Most people would be unable to distinguish the difference were it not for the Fenton hallmark identifying the current pieces. *Fenton Carnival*—another example of superb handcraftsmanship for those who look for the unusual in fine glass. Your customer will recognize it as an investment in "the antiques of tomorrow."

1986-1987 General Catalog



9063 NK
Bell, Sydenham

9269 NK
Pitcher, Quintec

9292 NK
Votive, toothpick
Button & Arch

9658 NK
Vase, Dogwood, 8" h.

9234 NK
Basket, Butterfly & Berry

Cobalt Marigold Carnival

9276 NK
Comport, Ftd.,
Innovation

9279 NK
Comport, 7",
Marquette

9653 NK
Rose Bowl, Fabergé

5148 NK
Mouse

5119 NK
Kitten

8289 NK
Bowl, Orange Tree & Cherry

8361 NK
Bell, Barred Oval

Carnival



Handmade in the age old manner . . . and right here in our good old U.S.A.

1987-1988 General Catalog

F E N T O N

Carnival

Iridescent glass, the original name for Carnival glass, was one of The Fenton Art Glass Company's major products from its inception in 1907 until 1920. This unique glass was first introduced nationally by Louis Comfort Tiffany in the 1890's. It is produced by spraying various shades of glass with a metallic salt mixture while the glass is still very hot, creating a permanent rainbow across the surface of each piece.

Carnival glass authorities have acclaimed Fenton's reproduction of this treatment as the best representation of the antique iridescent formula ever produced. Most people would be unable to distinguish the difference were it not for the Fenton hallmark identifying the current pieces. *Fenton Carnival*—another example of superb handcraftsmanship for those who look for the unusual in fine glass. Your customer will recognize it as an investment in "the antiques of tomorrow."



9461 NK
Plytec Pitcher
32 oz.

3022 NK
Rose Bowl
Wave Hobnail

*9163 NK
Famous women bell
3 different faces.
Amelia Earhart
Helen Keller
Elizabeth Ann Seton

9284 NK
Rose Ftd. Candy

9738 NK
Acanthus Basket
9 1/2"

3067 NK
Bell
Wave Hobnail

*9163 NK

5200 NK
Praying
Boy and Girl

8335 NK
Open Edge
Basket

5225 NK
Puppy

5226 NK
Fox

5220 NK
Pig

9728 NK
Acanthus Bowl 8 1/2"

*9163 NK

Carnival



F E N T O N

Shell Pink

Shell Pink . . .
Soft opal glass with a
pearl finish. Iridescent
accents for the bed-
room or bath, but at
home in most country
and victorian settings.

0350 AS
20 Pc. Assortment

Combines shell pink
with handpainted
Hearts & Flowers
shown on page 11.
Displays and sells
beautifully together.

For those discriminat-
ing people who like the
unusual in fine Ameri-
can handmade glass.



8466 PE
Bell, Faberge, 6 3/4"

5750 PE
Vase, Rose, 9"

5161 PE
Swan, 4"

9223 PE
Comport, Rose, 6 1/4"



9208 PE
Student
Lamp, Rose,
19"

8376 PE
Hurricane Candle, 11"
w/candle

*Shell Pink . . . destined
for the "Best Sellers" list!*



5730 PE
Basket, Rose, 7" h.

5783 PE
Oval Trinket
Box, Rose, 4 1/2"

9185 PE
Covered Candy,
Panelled Daisy, 8 1/2"

8294 PE
Votive,
Panelled
Daisy, 3 1/2"
(with candle)

9256 PE
Bud Vase, Rose,
11"

9799 PE
Fenton Logo

5115 PE
Small Bird, 3 3/4"

9240 PE
Basket, Rose, 6 1/4" h.

1995 PE
Slipper, Daisy & Button

8406 PE
Fairy Light,
Heart, 7"

Build your display or room
setting around this lovely
handmade Fenton Lamp.
Provides a warm romantic
glow that will attract sales
and loving thoughts.

Shell Pink



F E N T O N

Teal Marigold

The appeal broadens to a whole new group of consumers! Not only will this new color capture the dyed in the wool carnival collector, it will also have a broad appeal to those who appreciate beautiful colorations in unusual designs and decorative patterns.

Iridescent glass, the original name for Carnival glass, was one of The Fenton Art Glass Company's major products from its inception in 1907 until 1920. This unique glass was first introduced nationally by Louis Comfort Tiffany in the 1890's. It is produced by spraying various shades of glass with a metallic salt mixture while the glass is still very hot, creating a permanent rainbow across the surface of each piece. Another example of superb handcraftsmanship for those who look for the unusual in fine glass. Your customer will recognize it as an investment in "the antiques of tomorrow."

*Handmade in
the age old
manner.
By Fenton, of
course.*



9480 OI
Chessie
Covered Candy, 8"

5177 OI
Alley Cat, 11"



8335 OI
Basket, Open
Edge, 7 1/4" h.

1995 OI
Slipper, Daisy and
Button, 6"

8234 OI
Comport,
Persian Medallion,
6 1/2"

8223 OI
Rose Bowl, Leaf
and
Orange
Tree,
5 1/4"

5163 OI
Bird, 4"

9185 OI
Covered Candy,
Panelled Daisy, 8 1/2"

8323 OI
Bowl, Open Edge, 6 1/2"

5151 OI
Bear Cub,
Sitting, 3 1/2"

8428 OI
Bowl, Butterfly and Berry, 9"

8466 OI
Bell, Fabergé, 6"

Teal Marigold



F E N T O N

Teal Marigold

Teal Marigold . . . Iridescent beauty from the past. A whole new group to add to the collection—and to add new collectors to your list of satisfied customers. An investment in the future.



Childhood Treasures . . . The charm of "A child's Cuddly Friend" is captured in No. 7 and the final edition of this series. Limited to 5000 pieces, each is handpainted and signed by the artist.

Artists' Series . . . In No. 7 and the final edition of this series, a colorful day in spring comes to life in "Househunting." Each is limited to 5000 pieces, handpainted and signed by the artist.

