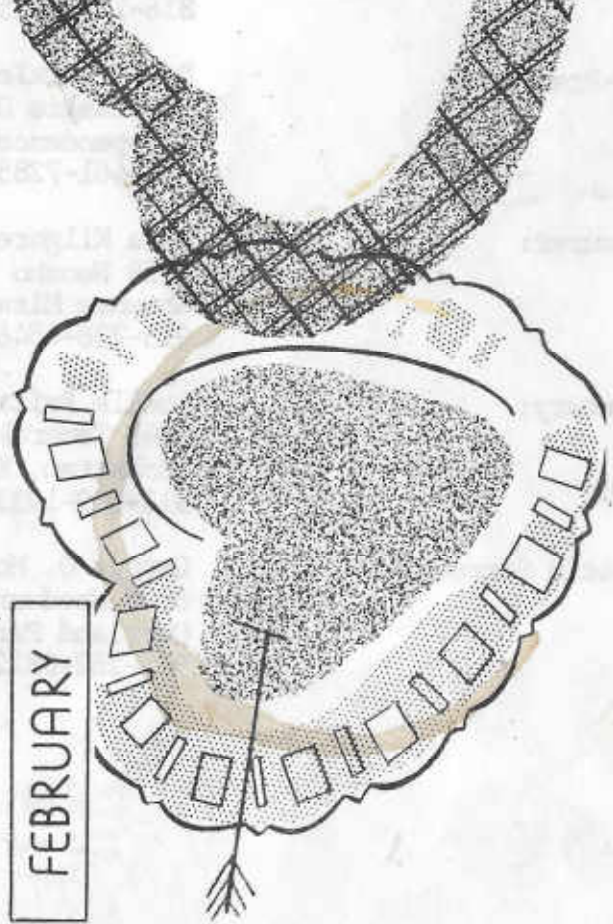


H. O. A. C. G. A.
GEORGE O. MCGREW JR.
BULLETIN SECRETARY
6300 WOODWARD
OVERLAND PARK, KANSAS 66204
913-262-8822

FEBRUARY 1980

SUN	MON	TUE	WED	THU	FRI	SAT
3	4	5	6	7	8	9
10	11	12	13	14	15	16
17	18	19	20	21	22	23
24	25	26	27	28	29	





Heart of America
Carnival Glass Association, INC.

MEMBERSHIP JUNE TO JUNE
\$5.00 PER COUPLE OR SINGLE

PUBLISHED 15th. OF
EACH MONTH

President: Cooley Miller
7605 N.W. Eastside Drive
Kansas City, Missouri 64152
816-741-4635

Vice-President: Davis Shikles
606 Leslie Drive
Independence, Missouri 64055
816-461-7285

Treasurer: Cora Kilgore
4928 Neosho
Shawnee Mission, Kansas 66205
913-236-4546

Secretary: Lucile Britt
3048 Tamarak Drive
Manhattan, Kansas 66502
913-539-1933

Bulletin Secretary: George O. McGrew
6800 Woodward
Overland Park, Kansas 66204
913-262-8822

MINUTES FROM THE JANUARY MEETING OF THE H.O.A.C.G.A

The January meeting of the HOACGA was called to order at 2:00 PM on the 27th day of January by the President, Cooley Miller. The meeting was held at the Mission Holiday Inn in Overland Park, Kansas. Attendance being very good.

The Treasurers report was read by Treasurer Cora Kilgore:

Balance of November	\$11,413.50
Expenditures	2,146.62
Deposits	3,735.50
Balance on Hand	\$13,002.38

The report was approved as read and is to be placed on file for the auditors.

Linda McGrew read the minutes from the November meeting and were approved as read.

The Convention Chairwoman, Sadie Treff, gave a report on the planning and progression of the Convention. All reservation cards have been mailed out with a good response so far. Looks like another outstanding convention is in store for HOACGA members.

Bob Grissom reported that the plans for this years souvenirs are coming along and that we still have 3 of the Loving Cup souvenir from 1979 available.

Mr. Bolles reported on the donations to the "School of the Ozarks" museum of Carnival Glass by interested club members. Members have requested that we seek more information on the School before deciding if this is something we want to do.

The response to the Hawaiian trip has been good. The following list are the ones deciding this would be a very fun trip to take and perhaps you can make plans to join them by returning your notice from the December Bulletin:

HAWAIIAN TRIP

Connie & Harry Katowitz
Independence, MO

M/M Lester Peters
Marengo, IN

James B & Ruth Janes
Richmond, VA

Don Moore
Alameda, CA

Russell Collins
Milwaukee, WI

Cooley & Marge Miller
Kansas City, MO

John & LeVeta Woody
Douglas, Kansas

Cora & Virgil Kilgore
Fairway, Kansas

Gerald & Laura Smith
Oxnard, CA

Harold Ludeman
Black River Falls, WI

Ralph & Ethel Neighbors
Olathe, Kansas

M/M Ralph Mullins
Independence, MO

Duane L. Spry
Independence, Mo

Frank & Faye Ronk
Mission, Kansas

M/M Christ E. Harnish
Willow St., PA

Bill Edwards
Rushville, IN

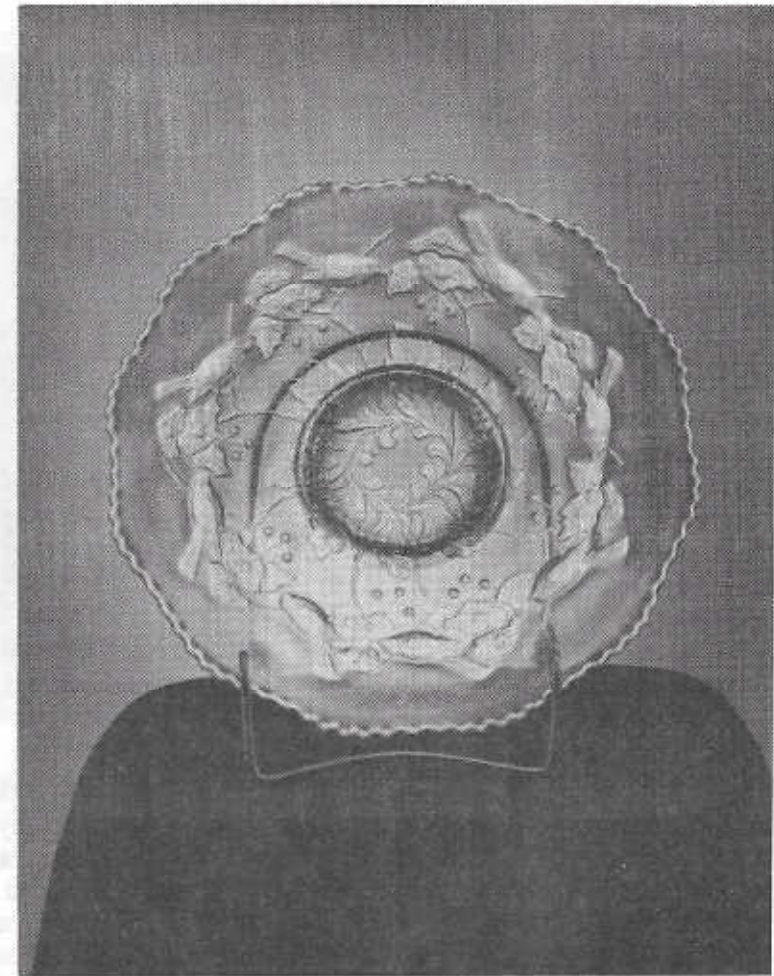
The February and March HOACGA meeting will be held at the Mission Holiday Inn. Come early for lunch at 12:30.

The meeting was then adjourned.


Linda McGrew, (Sec.)

President, Cooley Miller

BIRDS & CHERRIES CHOP PLATE



This Birds and Cherries chop plate will be auctioned off at the H.O.A.C.G.A. convention in April. This plate as far as I know is the only marigold chop plate in this pattern. Marge and I have one in blue. There has been one reported in white, however, I do not know who owns it if it does exist. This is one of several pieces of rare carnival that will be auctioned by John Woody at the H.O.A.C.G.A. convention in April.

Cooley Miller, President

EDUCATIONAL TUMBLER SERIES

THE EXCITING SWEETHEART TUMBLER



It gives me a great deal of pleasure to picture and describe this very fine unlisted carnival glass tumbler that was made by the Cambridge Glass Company of Cambridge, Ohio. While this is not an unlisted pattern, it is the first time to my knowledge, the Sweetheart pattern has been found in any other shape in Carnival glass, other than the covered cracker jar. Mrs. Hartung has named this pattern "Sweetheart" and features it in her book 8, page 97. She shows what at that time, was the only known piece of this pattern in Carnival glass. A very good picture of this pattern, showing the cracker or cookie jar in color, can be seen in Sherman Hand's book 4, page 67. Another good picture of the "Sweetheart" cracker jar can be seen in Bill Edwards book on Millersburg glass. It is shown on page 169. At the time of the publication of his book many thought this to be a Millersburg pattern. Since then, old advertising data has been found to prove without a doubt that this is a Cambridge pattern.

cont:

4

A book on Cambridge glass by Lyle Welker shows both the cracker jar and our featured tumbler in crystal, along with a good many other pieces made in this pattern. Cambridge advertised this as their # 2631 "Marjorie" design and also shows their "NEAR-CUT" trade mark in this same literature. Since this pattern was made in a number of pieces in crystal, it is quite possible that other pieces could be found in Carnival glass too.

Our featured "Sweetheart" tumbler is an imitation cut glass pattern and contains two of the large hobstars and two of the heart shape designs. The photo shows one of each of these motifs. The pattern's name of "Sweetheart" is derived from these heart shaped designs.

The tumbler is of marigold color with excellent iridescence. It stands four inches high and has a top diameter of three inches. The base is two and one-fourth inches wide and contains a many rayed star on the bottom of the base. On the inside of the base it carries the famous "NEAR-CUT" Cambridge trade mark. It is truly a spectacular tumbler in color, iridescence and design.

In the July 1978 HOACGA newsletter, I featured in article # 7 of this Carnival glass tumbler series, the Cambridge tumblers known to exist at that time. The list included the very rare "Inverted Feather", "Inverted Thistle", "Inverted Strawberry", "Double Star" and the Near Cut Souvenir" tumbler. We can now add the "Sweetheart" pattern to this list of fine Cambridge Carnival glass tumblers. Note that all of these Cambridge pattern tumblers are of the intaglio or imitation cut glass type.

Six of these "Sweetheart" tumblers are known to exist. They were owned by a family in Missouri who purchased them at a house auction in Willow Springs, Missouri, some 5 years ago. Needless to say, they were purchased at that time for a very modest price. I consider this tumbler as very rare, very desirable and would make a fine addition to any Carnival glass or tumbler collection.

This is # 26 of this series on Carnival glass tumblers. Next month we will feature a Northwood tumbler that is known by most collectors as "Northwood's Cherries". If you do not presently own this rare tumbler, you will probably will have a little difficulty in finding this one.

John & Lucile Britt

PS. We would like to personally thank Jack & Mary Adams of La Crosse Wis. and Roy & Peggy Deal of Jackson, Tenn. for sending us copies of reprints from their Cambridge glass books by Welker.

PICTORIAL PATTERN PARADE

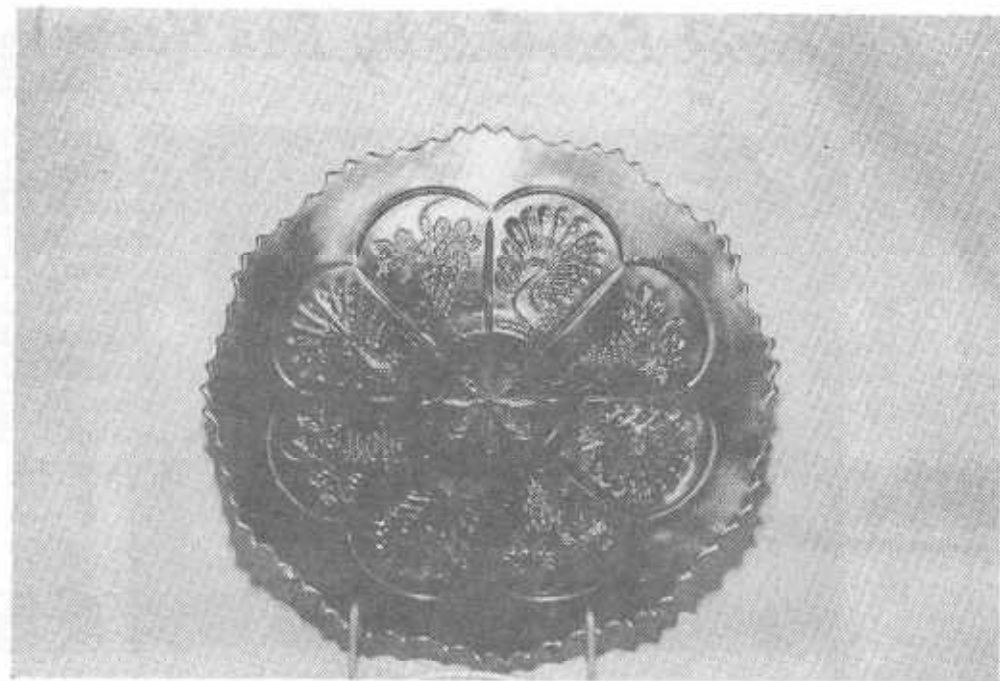
HOBSTAR BAND PITCHER & TUMBLER



The "Hobstar Band" pitcher shown above is quite hard to find in this unusual footed shape. The pitcher in this pattern usually comes with the sides coming straight down instead of the shape that is photographed here. While neither pitcher is considered common, the one shown here is much harder to find and would demand a higher price.

The above pitcher is owned by Roland Kuhn & Donald Kime of Wichita, Kansas. The tumblers too, come in two different styles. Note the straight up and down shape of the one shown here which is commonly known by tumbler collectors as the "Hobstar Band Variant" (Owens #97). The other style with the top flared out is merely called "Hobstar Band" (Owens #96). You will encounter less of the variants. The only color so far reported in these pieces is various shades of marigold. This is considered to be an Imperial pattern.

PEACOCK & GRAPE PLATE IN COBALT BLUE



The "Peacock & Grape" (Hartung 2 page 128) pattern is quite common in bowls coming in both the footed and collared base. It is downright hard to find a plate in this pattern however, and very difficult to find one in cobalt blue. Mrs. Hartung lists this pattern as rare in a plate. The plate shown above has the collar base and has outstanding iridescence. Occasionally a footed plate shows up in this pattern, but they too are not common. This is a Fenton pattern and was made in the 1915 era. The plate pictured here is one of the very few I know of in cobalt blue. It is owned by Osteen & Mary Lou Smith of Cornith, Mississippi.

Pictures & remarks by
John & Lucile Britt

Carnival Cameos by Don Moore

CONSTELLATION - This little compote is the only shape known in this pattern. The exterior pattern is called Seafoam. Newer collectors are sometimes confused by the double pattern and will think they have found an S-Repeat compote. The Seafoam and S-Repeat patterns are indeed quite similar. This compote is usually seen only in white. The one shown here is the only one I have seen in amethyst. I have seen two in pastel marigold. It has been reported in peach opalescent, but I have never seen one. The price of this piece will fall into the \$50 to \$75 range. The maker has never been confirmed.



Some people may consider thirteen an unlucky number, but it may not be so, when applied to a full collection of Northwood baskets. These baskets seem to have been popular since the day they were first made, and today are very much in demand and are steadily becoming harder to find.

This piece was made in two shapes--straight sides, and the eight-sided or flared type. The same basketweave and rope effect was used on both. Since I was lucky enough to find one in the very rare Vaseline (only two known--Don Kime has the other) and the fact that Northwood was not known to have made red, peach opal or true smokey, my range of colors now number thirteen, which I consider complete. Only the Hearts & Flowers compote has a larger color range, about fifteen colors. Fenton's Orange Tree pattern has more shapes and colors but not all shapes in all colors. Since I have not seen the flared type in an equal range of colors I can only assume that they were made.

cont:

Further indication of how popular the basket shape was is that it was made in non-carnival also and the following colors have been seen: Blue Opalescent, Green Opalescent, White Opalescent, Custard, Black Amethyst, and only one reported in Clear. Several Black Amethyst baskets have been seen with an iridescent finish but in the opinion of some experts this finish was added in the not too distant past by a more modern method and should not be considered Carnival in its true sense.

Someone is bound to say that Northwood did make Peach Opalescent as they have the pattern "Nautilus" script signed Northwood in Peach. It is true that this piece came from a Northwood mold but facts recently show it was made by another owner after Northwood and simply didn't bother to remove the signature from the mold.

In the absence of Red, Peach Opalescent and True Smokey, Northwood should be called "King of Carnival Colors".

Ice Green (Lime Green)	Amber (Horehound) rare
Marigold	Ice Blue (rare)
Amethyst	Teal Blue (rare)
White	Dark Green (scarce)
Cobalt Blue	Aqua Opal (scarce) Blue bottom & feet
Vaseline (very rare)	Aqua Opal (scarce) Green Bottom and feet
Purple	

My thanks to Don Moore for his very kind and expert help. If any of you folks have something to add, please write as I would love to hear from you.

Flynn Willis
211 Clem Street
Ottumwa, Iowa 52501

We repeat the guide lines set up in years past for the benefit of the new members and as a reminder to all. Member families may advertise ten (10) FOR SALE and ten (10) WANT ads each month free of charge.

All advertisements, announcements, letters or any other item to be printed, must be received by the Bulletin Secretary by the 1st of the month to insure being published the month received.

1. In the absence of any chips or cracks being noted the piece will be considered perfect.
2. A 5 day return privilege at buyer's expense providing it is not as advertised.
3. All postage and insurance extra.
4. All for sale items must be priced - no bid items will be published.
5. The H.O.A.C.G.A. and paper do not accept any responsibility for items bought or sold thru this paper.
6. Marked Northwood pieces - please use (N).
7. Only OLD CARNIVAL GLASS items will be published.- The only new Carnival items accepted are the H.O.A.C.G.A. souvenir items.

For accuracy of description, the following is recommended:

A - Amethyst	PM - Pastel Marigold
P - Purple	R - Red
G - Green	C - Clear
B - Blue	IG - Ice Green
CB - Cobalt Blue	IB - Ice Blue
M - Marigold	AMB - Amber
PO - Peach Opalescent	S - Smokey
AO - Aqua Opalescent	W - White
EI - Excellent Iridescence	L - before color means light
GI - Good Iridescence	D - before color means dark

EXAMPLES: LM EI Brooklyn Bridge bowl \$250.00
DP EI Good Luck bowl (N) small
base chip 75.00

It would be appreciated if you will please use these codes suggested, it will be less confusing to everyone and also be helpful in the typing and set up of the bulletin.

FOR SALE

Ruth Schinestuhl, 55 Natalie Terr., Absecon, N.J. 08201
PH: 609-641-1814 after 4PM

M EI	G/C cologne	\$100.00
M EI	Pine Cone plate 6"	25.00
M EI	Heart & Flowers plate	110.00
P EI	Round Fleur de Lis dome ftd	125.00
P EI	Raspberry water set 6 tumblers	450.00
G EI	Rare color, Carnival Holly plate	275.00
G EI	Wishbone 3ftd 8" bowl	90.00
IG EI	Nippon bowl	90.00
IB EI	Daisy Wreath bowl	180.00
AG EI	Leaf & Beads rose bowl	160.00

Paul Berube, 11 Doris Ave., Tiverton, R.I. 02878
Ph: 401-625-5303

PO EI	Apple Blossom Twigs 9" flat plate	\$60.00
CB EI	Good Luck bowl 9"	70.00
Aq EI	Scales bowl 5"	15.00
M EI	Peacock at the Fountain tumblers (4) (N) each	20.00
M EI	(N) Peacock at the Fountain small berry	10.00
W EI	NUART shade 5½" tall	14.00
M EI	NUART shade 4¾" tall	12.00
M EI	Imperial Grape wines (3) each	12.00
M EI	Octagon wine	18.00
IG EI	(N) Acorn Burrs punch set, bowl has crack and one flame off, base and 4 cups are OK	350.00

Nick Warner, 1405 Dixie, Hutchinson, Kansas, 67501
PH: 316-622-4902

Ib EI	G/C banana boat, no harm flake on rim	\$385.00
DIG EI	G/C banana boat	325.00
M EI	Heavy Iris 5 piece water set	525.00

FOR SALE

Dick Hatscher, Walnut Hill Road, Bethel, Conn. 06801
Ph: 203-743-1468

M EI	Zippered Loop lamp	\$200.00
B EI	Strawberry Scroll tumbler	295.00
P EI	Strawberry epergne	245.00
P EI	Farmyard bowl, round, damaged, call for details	950.00
W GI	Apple Tree 5 piece water set	295.00
G EI	Millersburg Diamond 7 piece water set	348.00
IG EI	Oriental Poppy tumblers, rare, (2) each	295.00
AO EI	Dandelion mug	345.00
AO EI	Stippled Three Fruits plate, super	495.00
R EI	Vintage Fernery	295.00

Send SASE for list of other Carnival

Sterling Butz, 221 N. Adams St., Allentown, Pa. 18104

B EI	Holly plate	\$85.00
A EI	Isaac Benesch bowl	95.00
M EI	54th Anniv. Isaac Benesch bon-bon	60.00
M EI	Two Flowers spatula ftd plate, small chip on leg	95.00
AO EI	Hearts & Flowers compote, extremely small base chip very hard to see	175.00
IG EI	Fruits & Flowers master berry bowl	110.00
W EI	Pond Lily bon-bon	60.00
b EI	Fentons Thistle banana boat	150.00
A EI	Fentons Thistle banana boat	150.00
A EI	Ogden Furniture bowl	95.00

FOR SALE

Jo Ann Mitchell, 9610 Hendon Lane, Houston, Texas 77036
PH: 713-981-1180

G EI	Dragon & Lotus bowl	\$34.00
M EI	Windflower bowl	25.00
P EI	(N) Cherry footed bowl, small chip on leg	40.00
M EI	Thistle & Thorn 8", chip on leg	30.00
P EI	Feathered Serpent 5" bowl	20.00
P EI	Oriental Poppy tumblers (2)	each 40.00
G EI	Greek Key tumblers (2)	each 85.00
W EI	Grape Arbor tumbler	100.00
P EI	Louisa 8" footed rare	50.00
PB EI	Orange Tree mug, large size, very rare	300.00

Norma Morrison, 3912 Pennsylvania Ave. Eureka, Ca. 95501
PH: 707-443-1319 evenings

A GI	G/C (N) small ice creams, set of 6, all for	\$150.00
M GI	Kittens cup, large chip on bottom	10.00
G EI	Rustic vase 11"	20.00

Charles A. Adams, 2522 W. 4th St., Los Angelus, Ca. 90057
PH: 213-384-5001 or 483-7755

DM EI	Fashion 7 piece water set	\$280.00
LM GI	Golden Flowers vase	20.00
G EI	Butterfly and Berry master berry bowl	95.00
G EI	Sunflower 8½" bowl, spatula footed	50.00
M EI	Brooklyn Bridge bowl, tiny rim flake	180.00
PO LI	Target 9 3/4" tall vase 6 flames	50.00
S EI	Fashion creamer	40.00
PO EI	Stippled Petals dome ftd. banana shaped bowl	75.00
PO EI	Border Plant dome ftd. 9" handgrip bowl	75.00

Send SASE for free list of old Carnival glass

FOR SALE

Kenneth Abendroth, 2309 S. Berry Drive, Appleton, Wisc. 54911
PH: 414-734-8580

AO EI	Thin Rib vase 10 3/4"	\$70.00
IG GI	Peacock and Urn sauce	55.00
S EI	Rococo vase	60.00
R EI	Thin Rib vase 9½"	110.00
M EI	Inverted Strawberry spitton	475.00
B EI	Beaded Shell mug	75.00
R EI	Orange Tree shaving mug	350.00
LV EI	Singing Bird mug	140.00
VS EI	Strawberry bon-bon	50.00
w EI	Constellation compote.	

Send for our list of Carnival glass, red. pastel, and opal pieces

Chester Herring, 101 E. Evans Ave. Bonham, Texas 75418
PH: 214-583-2645

A EI	S Repeat small creamer	\$75.00
M EI	Kittens cereal bowl	85.00
G EI	Imperial Grape cup and saucer	70.00
AO EI	(N) Paneled vase	110.00
A EI	Captive Rose 9" bowl	65.00
B EI	Strawberry Scroll tumbler	250.00
B EI	Sailboats wine	110.00
B EI	Milady tumbler	70.00
P EI	474 tumbler	75.00
B EI	Beaded Shell tumbler	60.00

Linda Wheller, 916 Fountain Ave., Louisville, Ky. 40222
PH: 502-426-8684

M EI	Garden Path variant bowl 8½"	\$30.00
M EI	Twins fruit bowl base	20.00
W EI	Grape Delight rose bowl (chipped feet)	50.00
G EI	Lustre Flute punch cup (N)	15.00
P EI	Ripple vase 9½" 9cracked)	7.00

FOR SALE

Mike Lauri, 2100 W. 79th Terr., Prairie Village, Kans. 66208
PH: 913-341-6053

AMB EI	Orange Tree mug	\$75.00
G EI	Peacock & Urn bowl	62.50
A EI	Peacock & Grape bowl	40.00
P EI	Wreath of Roses punch set, Vintage interior	325.00
M EI	Poinsetta & Lattice ftd. bowl	55.00
M EI	Footed Orange Tree tumbler	45.00
P EI	Beaded Shell mug	57.50
G EI	Blackberry Wreath bowl	41.00
B EI	Ten Mums bowl	60.00
P EI	Wishbone & Spades bowl	45.00

Wayland Billingsley, 206 N. Union St., Appleton, Wisc. 54911
PH: 414-733-3102

M EI	7 piece Heavy Grape Berry set by Fenton	\$125.00
CL EI	Imperial Grape wine decantur w/ stopper & 1 wine	200.00
P EI	Imperial Grape wine decantur, with 4 stemmed wines, stopper. Professionally repaired	220.00
A EI	Two handled Vintage bon-bon	29.00
A EI	G/C Hatpin holder, flake on bottom of one leg	95.00
✓CB EI	Poppy Pickle by Northwood	59.00
✓CB EI	Little Fernery or nut bowl, ftd. grape pattern	60.00
✓AM EI	Loganberry vase	185.00
✓S EI	Large Grape 10 3/8" bowl by Imperial	47.00
M GI	Vintage stemmed wines \$25.00 each or all 4 for	80.00

FOR SALE

Becky Morgan, 417 S.W. 103, Oklahoma City, Ok. 73139
PH: 405-799-7397

A EI	Millersburg Cherry pitcher	\$425.00
B EI	G/C banana boat	375.00
A EI	Millersburg Court House bowl, lettered	450.00
P EI	Flute toothpick	50.00
M EI	Flute toothpick	50.00
P EI	Flute breakfast set	125.00
A EI	G/C shot glass	75.00
M EI	G/C shot glass	75.00
B EI	Peach water set	795.00
B EI	Peacock at the Fountain water set	525.00

Jos Mello, 535 Fish Road, Tiverton, R.I. 02878
PH: 401-624-2174

M EI	Peacock & Urn compote	\$30.00
M EI	Imperial Grape tumblers (2)	each 12.00
M EI	Vintage punch cup	7.00
DM EI	Fashion punch cup no harm flake on edge	5.00
M EI	Fenton basket 2 Sides up	15.00
B EI	Good Luck bowl	95.00
A EI	Stippled Ray Imp bon-bon (2)	each 20.00
A EI	Wishbone bowl (N) 8 1/2"	50.00
A EI	G/C punch cup (N)	20.00
DM EI	Grape Arbor tumbler base chip	15.00

FOR SALE

Frances Gannon, 8743 Branton, Highland, Ind. 46322
PH: 219-923-8134

P EI (N) G/C water set 7 piece	\$385.00
P EI (N) G/C small berry bowl	28.00
G EI (N) G/C water pitcher	240.00
P EI (N) G/C tumbler	23.00
P EI (N) Oriental Poppy tumbler	43.00
DM EI (N) Singing Bird tumbler	28.00
DM EI Grapevine Lattice tumbler	28.00
DM EI Vineyard tumbler, rough bottom	12.00
LM EI Grape Arbor tumbler	28.00
LM EI Lattice & Grape water set 7 piece	150.00



WANTS

Linda Wheeler, 916 Fountain Ave., Louisville, Ky. 40222
PH: 502-426-8684

P Peacock at the Fountain punch cups
W Dahlia sugar bowl lid
DM Vineyard water pitcher

Chester Herring, 101 E. Evans Ave. Bonham, Texas 75418
PH: 214-583-2645

B Base to Butterfly & Berry butter dish

George S. Bond, 1406 N. Ferncreek Ave., Orlando, Fla. 32803

R H.O.A.C.G.A. souvenir corn vase

Don Staley, 3615 Highland Lakes Dr. Kingwood, Texas 77339
PH: 713-358-0412

M EI Singing Birds tumblers
IB EI Fenton's little basket
AMB EI " " "
W EI " " "
AQ EI " " "
R EI Panther small berry bowl
P EI Penny Match Holder

Dick Hatscher, Walnut Hill Road, Bethel, Conn. 06801

IG G/C punch cup
IB Hearts & Flowers compote

WANTS

Russell Collins, 649 S. 66th St. Milwaukee, Wisc. 53214

Millersburg Marigold Flute punch base

Ruth Schinestuhl, 55 Natalie Terr. Absecon, N.J. 08201
PH: 609-641-1814 after 4 PM

- AO EI Embroidered Mums bowl
- IG EI Three Peacock at the Fountain punch cups
- IG EI Fruits & Flowers stemmed bon-bon
- R EI Horse 3 ftd bowl
- R EI Stag & Holly 3 ftd bowl
- TB EI Hearts & Flowers compote or bowl
- IB EI Northwood basket
- AO EI Northwood basket
- TB EI Embroidered Mums bowl
- Any color Northwood Poinsetta.

A.C. Dickey, 144 Chandler St., Vacaville, Ca. 95688

- W Butterfly & Fern
- W Cosmos & Cane
- W Orange Tree Scroll
- W Orange Tree Orchard
- W Wreath Cherry-painted
- W Heavy Iris
- W Ten Mums
- W Dahlia-painted

" It is important that you have enough to live on. It is more important that you know what to live for".

WANTS

Dick Hatscher, Walnut Hill Road, Bethel, Conn. 06801
PH: 203-743-1468

- IG EI G/C punch cups
- Hearts & Flowers compotes all colors
- Any thing in Aqua Opal

Singleton Bailey, PO Box 95, Loris, S.C. 29569
PH: 803-756-7495

- Any Color Big Fish or Trout & Fly bowls
- Any Color Mugs
- Any Color Millersburg Peacock bowls
- G Acorn Burrs covered sugar
- B Footed Orangetree covered sugar
- P G/C fernery
- P G/C tankard tumblers
- P G/C open compote
- Any A/O, Red, ice green, or ice blue pieces

John Stewart, 99 Aster Circle, Weymouth, Mass. 02188
Ph: 617-337-1304

- M EI Wishbone Epergne
- B EI Wishbone Epergne
- P EI Northwood basket
- IB EI Northwood basket
- AO EI Finecut & Roses rosebowl
- PH EI Peach, Fine Cut & Roses rosebowl
- M EI Dandelion mug
- G EI " "
- B EI " "
- P EI " "

FASCINATING FACTS

The cowboy movie star Tom Mix drove a Rolls-Royce that had a pair of antlers as a radiator cap. Mix once ordered tires for his limousine with his initials printed in relief. At that time Hollywood was connected by a network of dirt roads. Whenever Mix drove along one of these roads he would leave a long trail of "TM's" imprinted in the dust.

George Washington was not the first president of the United States. The first president was John Hanson, Maryland's representative at the Continental Congress. On November 5, 1781, Hanson was elected by the Constitutional Congress to the office of "President of the United States in Congress Assembled". He served for one year.

Pirates believed that piercing the ears and wearing an earring improved eyesight. This idea, scoffed at for centuries, has been reevaluated in light of acupuncture theory. The point on the lobe where the ear was pierced corresponds to the auricular acupuncture point controlling the eyes.

The jaws of African fire ants are used as sutures for wounds in Kenya, Uganda, and parts of South Africa. After an operation is performed, an ant is allowed to bite into the two flaps of skin along the line of the incision. The ant's body is then twisted off, leaving the head with its mandibles locked into the skin like a stitch. A number of these miniature "stitches" are placed along a wound. During the healing process, they closely resemble modern surgical stitching.
