

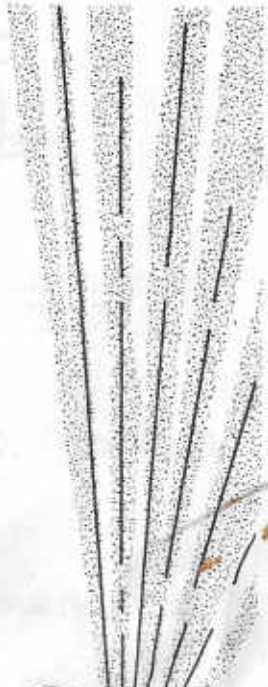
H.O.A. G.A.  
GEORGE O. MCGREW JR.  
BULLETIN SECRETARY  
6800 WOODWARD  
OVERLAND PARK, KANS. 66204  
913-262-8822



MARCH 1980						
SUN	MON	TUE	WED	THU	FRI	SAT
	2	3	4	5	6	7
	8	9	10	11	12	13
	14	15	16	17	18	19
	20	21	22	23	24	25
	26	27	28	29		



MARCH





Heart of America  
Carnival Glass Association, INC.

MEMBERSHIP JUNE TO JUNE  
\$5.00 PER COUPLE OR SINGLE

PUBLISHED 15th. OF  
EACH MONTH

President: Cooley Miller  
7605 N.W. Eastside Drive  
Kansas City, Missouri 64152  
816-741-4635

Vice-President: Davis Shikles  
606 Leslie Drive  
Independence, Missouri 64055  
816-461-7285

Treasurer: Cora Kilgore  
4928 Neosho  
Shawnee Mission, Kansas 66205  
913-236-4546

Secretary: Lucile Britt  
3048 Tamarak Drive  
Manhattan, Kansas 66502  
913-539-1933

Bulletin Secretary: George O. McGrew  
6800 Woodward  
Overland Park, Kansas 66204  
913-262-8822

EDUCATIONAL TUMBLER SERIES



NORTHWOOD'S CHERRIES

This little Northwood tumbler seemed to evade me for a number of years and it was one of the later additions to our tumbler collection. It was certainly one of the hardest ones for me to find. We worked hard and traveled long in search of this one. Northwood's Cherries as most Carnival glass collectors call it, is sometimes called "Cherry, Thumbprint and Cable". While the tumbler does not contain the thumbprints, the pitcher and table set pieces do. Since this tumbler is definitely Northwood, I prefer to use the name of "Northwood's Cherries". While I would class these tumblers as rare, the water pitcher could be called extremely rare. You do see tumblers in this pattern quite frequently in clear pattern glass, usually trimmed in gold & red paint, but to find one in Carnival glass is entirely a different story.

cont;



This tumbler has been reported only in marigold, some in a lighter shade than others. The few tumblers in which I have seen all contain the famous Northwood trademark on the inside of its base. The bottom of the base contains the rayed star figure which is very similar to that found on the famous "Grape and Cable" tumblers. The tumbler has eight flutes or panels and they extend from about one inch from the top completely down to the bottom making an eight sided or panelled base. The tumblers that I have examined have all been ground around the outer edge on the bottom to insure a stable and level foundation. The cable completely circles the tumbler. There are two clusters of cherries each containing two leaves and six cherries.

Do not confuse this tumbler with the more common "Millersburg Cherries" tumblers. While I am not insinuating that the "Millersburg Cherries" or the "Millersburg Cherries Variet" are common, it has been my experience that the "Northwood Cherries" tumblers and pitchers are much more hard to find. Next month we will discuss and picture the "Millersburg Cherries" and the "Millersburg Cherries Variet" tumblers. I believe this might be of help for you to compare these tumblers at this time, and I am sure that it will especially be beneficial to our new collectors.

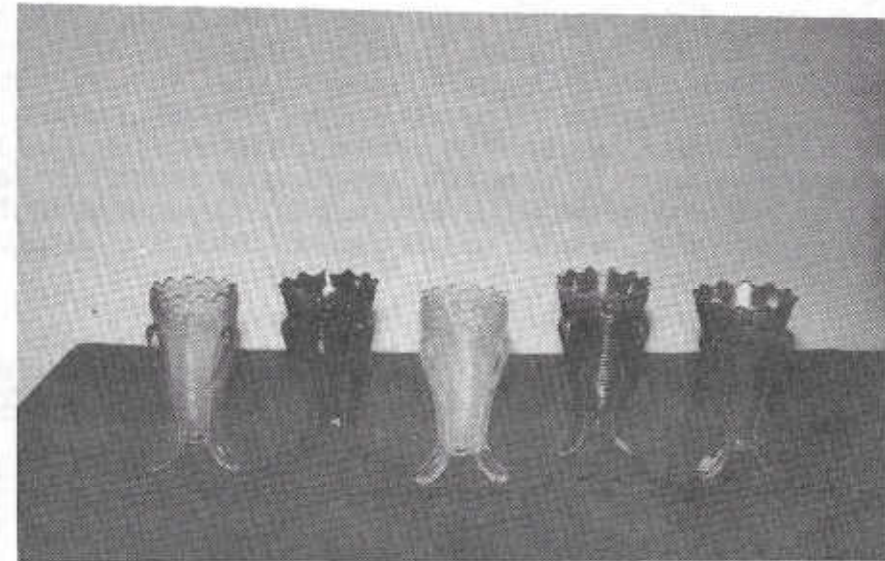
In conclusion, you can mark up the "Northwood's Cherries" as one of the rare Carnival glass tumblers. While I do not consider this tumbler as one of the most beautiful, it does look great on the display shelf. It gave me a great deal of satisfaction just to find this one, and add it to our collection. Perhaps this feeling is partly due to the fact that it was so downright hard for me to find.

This is # 27 of this series on Carnival glass tumblers. From time to time we will cover some of the more common tumblers as well as those from the rare and unlisted categories.

John & Lucile Britt

PICTORIAL PATTERN PARADE

DAISIES AND DRAPES VASE



The "Daisies and Drapes", in my opinion, is one of the finest of the Carnival glass vases. It is a Northwood piece, and usually carries the Northwood trademark. The vase is rather small and measures only six and one half inches high. This beautiful piece of Carnival glass is always in great demand. The one in aqua opalescent is probably the one that is most wanted, but aqua opalescent is not the rarest color in this pattern. The pastel blue and pastel green colors are much harder to find. The white is one of the easier colors to obtain. We once owned the pastel green and pastel blue vases and they are now part of a fine collection in Michigan. The aqua opal vases will vary from piece to piece as to the amount of opalescence, and some have a heavy butterscotch color. The vase is listed in the Hartung price guide in peach opalescent, but I was never fortunate enough to see one in that color.

cont;



It is interesting to note that the United States Glass Company, back in 1899, produced a pattern very similar to this one. It was one of their "States" series patterns, and was featured in their 1899 advertisements as ~~their~~ Ivory decorated "Vermont" pattern. This was their version of custard glass. This pattern is shown in many pieces in Heacock book 4, page 51 on Custard glass. It is also pictured in his U.S. Glass book 5, page 53. Note that the pieces have the same feet and the same flower rim as that of the "Daisies and Drapes" vase. Since U.S. Glass produced this pattern in 1899, it is quite possible that Northwood got the idea for his "Daisies and Drapes" vase from the "Vermont" pattern. Northwoods mold contained the drapes while the "Vermont" pattern is smooth with the painted flowers. The "Vermont" pattern was also made in colored pressed glass. We have tumblers of this pattern in several colors and they are very beautiful. Wouldn't it have been nice if Northwood would have made the "Daisies and Drapes" pattern in a Carnival Glass water set?

Remarks and pictures by  
John & Lucile Britt

\* \* \* \* \*



## Carnival Cameos by Don Moore



DAISY SQUARES - This seldom seen pattern was known only in variously shaped stemmed rose bowls until this compote was found some five or six years ago in Monterey, California. Whereas the rose bowls are either green or marigold, this compote is on true amber base glass. This rare pattern has been attributed to Millersburg but if so, this would be the only piece of Millersburg that has been reported in amber so far as I know. We usually associate amber with the Imperial Glass Company. Could we be wrong as to the maker of this pattern?



NOTICE  
NOTICE-NOTICE  
NOTICE-NOTICE-NOTICE

A REMINDER THAT JUST AROUND THE CORNER THE MEMBERSHIP YEAR WILL EXPIRE AND AGAIN MEMBERSHIP DUES WILL HAVE TO BE PAID. REMEMBER THAT THE DUES THIS YEAR FOR THE 1980-1981 PERIOD WILL BE TEN DOLLARS (\$10.00) PER MEMBERSHIP. IT WOULD BE OF A GREAT ASSISTANCE IF ALL DUES WERE PAID BEFORE JUNE 1, 1980 AS THIS WOULD ENABLE US TO KEEP OUR RECORDS UP TO DATE AND WOULD ASSURE YOU OF RECEIVING THE BULLETIN CONTINUOUSLY. LAST YEAR OVER \$140.00 WAS SPENT ON POSTAGE FOR BULLETINS SENT TO PEOPLE WHO NEVER INTENDED TO REJOIN. PAYMENTS ARE TO BE SENT TO

MRS. LUCILE BRITT  
3048 TAMARAK  
MANHATTAN, KANSAS 66502

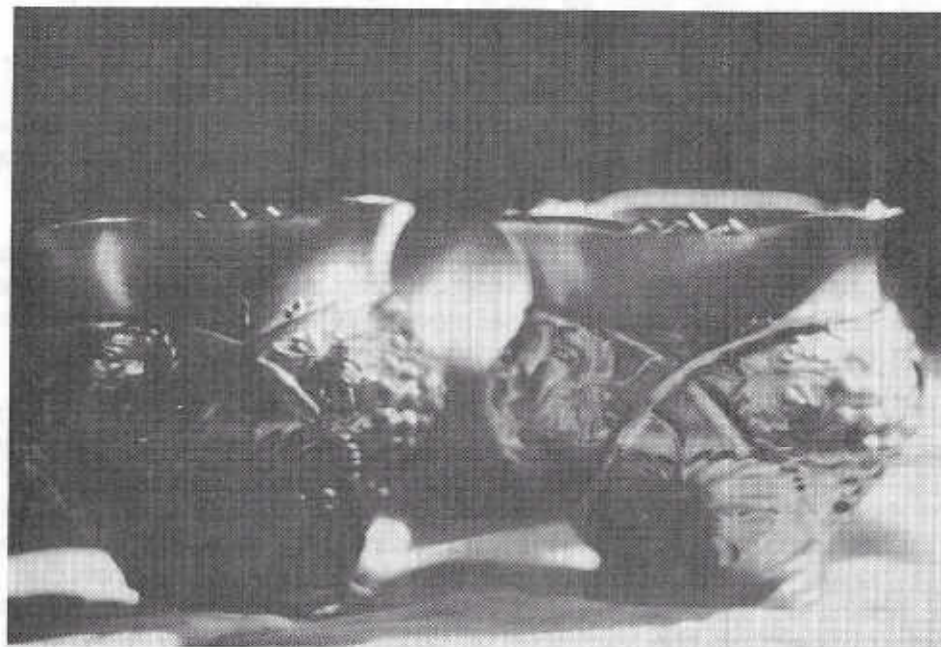
WE WOULD APPRECIATE YOUR COOPERATION ON THIS MATTER.

\*\*\*\*\*

We have received word that Mr. Jay O' Donnell passed away February 2 after suffering a heart attack. Jay was a founding member of HOACGA and was always in a cheerful disposition and interested in furthering the ambitions of both old and new collectors. He welcomed every opportunity to talk Carnival and to be helpful and share his large store of knowledge with everyone. Jay will be remembered by all those who knew him in the Carnival field.

\*\*\*\*\*

UNUSUAL PALM BEACH VASES



Shown in the "Pictorial Pattern Parade" of September, 1979 bulletin were two very unusual "Palm Beach Vases". Earlier this year, I found a pair of vases, very similar in shape and of identical pattern, and they are pictured above. The opening at the top is much wider and they are of a honey amber color. I believe them to be jardinières and have called them that. but now I have seen the other pair, I could be wrong. They measure 5½" high and 5¼" at their widest point. The base is 3½" in diameter. I am very delighted to have them in my collection.

Miss Angela J. Hallum  
Reigate, Surrey, England



SHADES OF CARNIVAL GLASS

Who would have thought when we began collecting Carnival glass that Carnival glass shades would become the most practical part of our Carnival collection. In fact we have given them, to quote Helen Greguire, " a place in a collection by using them as they were intended." Looking back, our use of Carnival glass shades began even before we had any shades. Only fixtures - one two shade drop ceiling fixture and an iron base for a three light table lamp.

The two shade ceiling fixture was an oval chain supported gold and brown fixture purchased with two oyster gray ribbed shades decorated with blue and red flowers. When we revamped our bedroom decor to Victorian antique we installed the above fixture to compliment.

The cast iron base for the three light lamp has the gold supporting base and center column designed similiar to an ancient temple column with the leaves out turning near the top. As with the ceiling fixture each bulb socket had a on-off knob. The screw off finial was all that remained of the original umbrella type shade. A non-descript junker ceiling fixture purchased at an auction provided missing necessary fitter parts by which to affix the shades to our fixtures. Extolling the virtues of collectible shades a retired teacher friend planted the seed for the search for Carnival glass shades.

As luck would have it we ran across two peach opalescent pillar and drape shades at The Star of the North Antique Show in Mirneapolis. Advertising through the HOACGA we located a third in Missouri. Thus a completed beautiful threesome eyestopper in our living room. Enroute to my parents home across the state we stopped at a flea market which we periodically attempt to visit. Surprise! Surprise! Three marigold coral shell shades. Paint specked but perfect. Just right for the bedroom ceiling fixture. Displayed to best advantage with lower watt bulbs the interior iridescence and exterior satin appearance are beautiful. But now an extra shade.

Picture, if you can, our 15' entry hall angling to the right toward our bedroom/bathroom area. Eight feet into the hallway as well as directly outside our bedroom/bathroom doorways were two chrome based frosted glass covering the two bulbs ceiling fixtures. If only we could find something from which to support that third coral shell shade and that unreal aspect of finding some type of fixture and shade for the front hall location as well.

FOR SALE

M/M Donald W. Greb, 4960 S. Seneca, Lot #29, Wichita, Ks. 67217  
PH: 316-522-2890

A EI	Three Fruits plate 9" basketweave back	\$95.00
M EI	Tree Bark water set, 7 piece	75.00
A EI	G/C Sweetmeat (rough)	100.00
IB EI	Concave Diamond tumbler	25.00
G EI	Peacock Tail 10" bowl	38.00
A EI	Strawberry plate (N) basketweave back	100.00
G EI	Grape Leaves 9" bowl (N)	50.00
LM EI	Windflower 9" bowl	25.00
M EI	Horses Medallion candy dish	50.00
A GI	Star of David & Bows	50.00

\*\*\*\*\*

Melvin Ruser, 351 E. Memorial, Walcott, Ia. 52773  
PH: 319-284-6330

M EI	Bird with Grapes wall vase	\$35.00
M EI	Honeycomb rosebowl	110.00
A EI	Cambridge Cologne bottle, no stopper	400.00
M EI	Fisherman's mug	125.00
M EI	Kingfisher large bowl	75.00
A EI	Struting Peacock sugar & creamer with lids	110.00
M EI	Seagulls	65.00
A EI	Carnival Swan or Nesting Swan, 2 flakes on edge	125.00
A EI	Beaded Shell mug	70.00
A EI	Fenton Heavy Grape	30.00

\*\*\*\*\*

Norma Wagner, PO Box 52, Bagley, Ia. 50026  
PH: 515-427-5749

A EI	Wide Panel stemmed sherbert	\$24.00
R EI	Peacock & Grape 9" ruffled bowl, gorgeous detail	280.00
CB EI	Horse Medallion rose bowl	140.00
M EI	Starlyte gas light shade, rough inside, 4" fitter	35.00
M EI	Thistle gas light shade 4" fitter	45.00
G EI	Two Flowers flat 10½" footed bowl	140.00
S EI	Wide Panel 15" cake plate	47.00



FOR SALE

Kenneth Abendroth, 2309 S. Berry Dr., Appleton, Wi. 54911  
PH: 414-734-8580

S EI	Robin mug	\$65.00
P EI	Singing Bird mug, adv. Hotel Vendome	70.00
W EI	Cherry Wreath 4 piece table setting with the Diamond D marked butter base, red paint on the cherries	475.00
G EI	Singing Bird mug	100.00
DM EI	Singing Bird mug	45.00
M EI	Singing Bird mug stippled	60.00
A EI	Singing Bird mug	65.00
P EI	Beaded Shell mug	60.00
AMBEI	Orange Tree mug	65.00
M	Perfume atomizer marked DeVilbliss	25.00

\*\*\*\*\*

Albert W. Light Jr., Madison Creek Rd. #5, Goodlettsville, Tn. 37072  
PH: 615-859-1406

M EI	Butterfly & Berry 7 piece berry set	\$136.00
M EI	Robin water pitcher & 4 tumblers	395.00
B EI	Captive Rose 9" plate	110.00
G EI	Singing Bird mug some wear around lip (N)	67.00
CB EI	Cherries & Blossoms pitcher & 4 tumblers	185.00
A EI	Singing Bird tumbler (N)	45.00
B EI	Bushel Basket (N) nick on one foot	58.00
B EI	Peacock at the Fountain 7 piece berry set (N)	285.00
W EI	Bushel Basket (N)	90.00
W EI	Hearts & Flowers compote	69.00

\*\*\*\*\*

Madonna Woodward, 48900 Middle Fork Rd. North Bend, Wa. 98045  
PH: 206-888-0460

G EI	Vintage plate 7 3/4"	\$60.00
B EI	Peacock & Urn, beaded berry back	115.00
M EI	Beaded Bullseye vase	25.00
M EI	Sailboat wine	95.00
A EI	Vintage wine	20.00
A EI	Vintage wine, chipped base	12.00

FOR SALE

Madonna Woodward, 48900 Middle Fork Rd. North Bend, Wa. 98045  
PH: 206-888-0460

P EI	G/C Sweetmeat flake under base	\$195.00
B EI	Paneled Dandelion tumblers 6 for pitcher free with tumblers, has crack under lip	295.00
M EI	Small pitchers, Split Diamond Thistle & Thorn	24.00 40.00

\*\*\*\*\*

Mike Bevill, 5805 Norde Drive East, Jacksonville, Fla. 32210  
PH: 904-778-0442

P EI	G/C punch cups	each \$36.00
P EI	G/C ice cream sherbert	30.00
P EI	G/C Hatpin Holder	125.00
M EI	G/C shot glass, base repaired	75.00
IB EI	G/C Grape & Cable punch cup 1/4" heat check	15.00
M EI	Inverted Feather compote	45.00
M EI	Fruit Salad punch cup	10.00
LA EI	(N) Bushel Basket (lavender ?) minor nick)	60.00
M EI	Pirwheel (?) creamer	14.00

SASE for Carnival listing dated 1 March 1980

\*\*\*\*\*

Virgil St. John, 1903 Hwy 18 E., Clear Lake, Id. 50428  
PH: 515-357-7354

AO EI	Northwood basket (N)	\$225.00
LAO EI	Northwood basket (N)	185.00
IG EI	Corn Vase (N)	250.00
W EI	Persian Garden 6" plate	65.00
M EI	Hobstar Band pitcher	185.00
M EI	Springtime tumbler (N)	85.00
P EI	Tiger Lily tumbler	75.00
P EI	S Repaeat punch cups	each 39.00
B EI	Kitten toothpick	250.00
B EI	Kittens cereal bowl	250.00

FOR SALE

Sterling Butz, 221 N. Adams St., Allentown, Pa. 18104

M EI	Windmill dresser tray	\$50.00
M EI	Orange Tree punch bowl base	25.00
M EI	Windflower plate	40.00
M EI	474 Milk pitcher	50.00
M EI	Persian Medallion rose bowl	40.00
G EI	Octagon butter dish top	45.00
M EI	Dahlia butter bottom	30.00
B EI	Blackberry miniature compote	35.00
A EI	Tumble-up complete	45.00
A EI	S Repeat creamer	60.00

\*\*\*\*\*

Nancy Williams, 2009 Cullum Dr., Reading, Pa. 19601

PH: 215-374-9033

M		
M EI	Cosmos & Cane Child's punch bowl, small chip on base	\$65.00
LM GI	Rose Petal jar, Presznick Bk 3 plate 175	45.00
P EI	Imperial Flute Spooner	85.00
LM GI	G/C stippled dresser tray/banded edge, edge chipped	75.00
M EI	Octagon sherbert	25.00
LM EI	Imperial Colonial, ironcross marked 6" bowl	20.00
M EI	Three Fruits plate, basketweave back	50.00

\*\*\*\*\*

Norma Morrison, 3912 Pennsylvania Ave., Eureka, Ca. 95501

PH: 707-443-1319 evenings

G GI	Louisa rose bowl	\$40.00
B GI	Garland rose bowl	50.00
P GI	Beaded Shell mug	45.00
A GI	Peacock & Grape ftd plate, silver irid on top	110.00
A EI	Millersburg Ribbons & Rays bowl, reg. finish	35.00
EI	Pink stretch Fenton #844 flower top candy jar	
	small flakes on lid rim	40.00
B EI	Cherries & Blossoms decorated water pitcher	75.00

FOR SALE

Mary Ellen Warren, 9623 Hunters Lane, Spring Grove, Ill. 60081

PH: 815-675-2112

W EI	Peacock on the Fence 9" plate	\$160.00
W EI	Ten Mums tumbler	95.00
IG EI	Poppy Show bowl 8½"	265.00
M EI	Kitten saucer	75.00
M EI	Kitten dish two sides turned up	80.00
M EI	Kitten dish four sides turned up	80.00
A EI	Stork & Rushes mug	60.00
P EI	Goodluck flat plate	175.00

\*\*\*\*\*

Joseph Mello, 535 Fish Road, Tiverton, R.I. 02878

PH: 401-624-2174

M EI	Imperial punch bowl and base no cups	\$100.00
M EI	Peacock at the Fountain pitcher	135.00
M EI	Orange Tree bowl 8½" collar base	25.00
M EI	Peacock & Grape bowl	25.00
M EI	Fish Scale & Beads bowl	25.00
A EI	Peacock at the Fountain tumblers (2)	each 28.00
B EI	Panelled Dandelion tumblers (2)	each 30.00
G EI	" " " (1)	30.00
M EI	Waterlily & Cattails large berry bowl	27.00
M EI	Waterlily & Cattails small berry bowls (2)	each 10.00

\*\*\*\*\*

Jim McClure, 116 Mansfield St., Belvidere, N.J. 07823

PH: 201-475-3077

P EI	Good Luck plate, basketweave back (N)	\$175.00
B EI	Rose Show plate	265.00



FOR SALE

Dick Hatscher, Walnut Hill Road, Bethel, Conn., 06801  
PH: 203-743-1468

M	EI	Little Bo-Peep mug		\$85.00
M	EI	Four piece Beaded Shell table set		285.00
M	EI	7 piece Oriental Poppy water set		385.00
M	EI	Rare (N) Cherry & Cable butter		148.00
A	GI	Silvery round Tulip & Butterfly bowl		375.00
P	EI	Zippered Heart sauces four	each	20.00
A	EI	Outstanding Millersburg 7 piece Peacock & Urn berry set, 1 sauce nicked on bottom		395.00
B	EI	Strawberry Scroll tumbler		220.00
IG	GI	Oriental Poppy tumblers have two	each	245.00
IB		3 Peacock at the Fountain punch cups	each	65.00

\*\*\*\*\*



"You gonna sweep it up with that?"

WANTS

A.C. Dickey, 144 Chandler St., Vacaville, Ca., 95688

- W Oriental Poppy tumbler
- G Heart & Feather tumbler
- W Cosmos & Cane tumbler
- W Orange Tree Scroll tumbler
- W Orange Tree Orchard tumbler
- W Apple Tree tumbler
- W Wreath Cherry, painted tumbler
- W Dahlia, painted tumbler

\*\*\*\*\*

James C. McPherson Jr., 3125 Ramsgate Rd. Augusta, Ga. 30909

- Dog bottle (Mr. Herkimer) 11 " tall Presznick Bk 4 plate 136
  - Moxie bottle, Presznick Bk 3, plate 135
  - Continental Distilling Corp. bottle w/ label, Pres. Bk 3 plate 31
  - Anchor Hocking bottle Pres Bk 3 plate 1
  - Princess bottle, Pres Bk 2, plate 214
  - Humpty-Dumpty bottle, Pres. Bk 2, plate 128
  - Hand Perfume bottle, Pres. Bk 2 plate 117
  - Heinz bottle, Hartung Bk 5, page 89
  - Frosty bottle, Hartung Bk 6, page 81.
- I would like to correspond with anyone having these bottles even if you do not want to sell them.

\*\*\*\*\*



WANTS

Mrs. Sue McDermott, 8521 Boliver Road, Middletown, Md 21769  
PH: 301-371-6929

- M (N) Bushel Basket
- G (N) " "
- IB (N) " "
- AO (N) " "

\* \* \* \* \*

Albert W. Light Jr. Madison Creek Rd. #5, Goodlettsville, Tn. 37072  
PH: 615-859-1406

- G Tiger Lily tumbler
- M Peacock at the Fountain creamer
- M Hanging Cherry butter dish
- A Hanging Cherry bottom for sugar bowl
- A Hanging Cherry spooner
- M Greek Key pitcher
- P Oriental Poppy pitcher
- M Oriental Poppy pitcher

\* \* \* \* \*

Elmer L. Cooper, Box 162, McDougal, Ark. 72441  
PH: 501-259-3531

Any HOACGA souvenir, 1974 thru 1978. Call Tue. Wed. or Thur, 8 to 5.

\* \* \* \* \*

Mike Bevill, 5805 Norde Drive East, Jacksonville, Fla. 32210  
PH: 904-778-0442

- Any opalescent pieces other than peach opal
- Panther pieces in G & pastels
- Hobstar & Fruit pieces any color
- Octagon wines M, CB, G
- Butterfly & Berry pieces in A,G,R, or pastels
- Butterfly & Berry pieces tri-cornered or ice cream shaped
- Sailboat ruffled sauce dish R, or pastels
- Damaged Red and Aqua Opal pieces, water pitchers
- Fenton little basket peices shaped as plates
- Flute creamer P

WANTS

Joseph Mello, 535 Fish Road, Tiverton, R.I. 02878  
PH: 401-624-2174

- A Butterfly & Fern tumbler
- A Peacock at the Fountain covered sugar to table set
- M " " " " creamer to table set
- G Wreath of Roses punch top, Vintage interior
- DP Cover for Vintage Powder Jar
- PO Folding Fan compote
- PO Roundup bowl
- PO Ski Star small bowls need three

\* \* \* \* \*

Louis Carpick, Center Road, Dudley, Mass. 01570  
PH: 617-943-4223

- G Base to Peach pattern butter dish (N)
- P Raspberry tumblers (N)
- M G/C punch bowl (N)

\* \* \* \* \*



FASCINATING FACTS

The nose cleans, warms, and humidifies over 500 cubic feet of air every day.

\* \* \* \* \*

A hippopotamus can run faster than a man.

\* \* \* \* \*

Members of the Dogon tribe in Mali, Africa, for many centuries worshiped a star known today by astronomers as Sirius B. The Dogon people knew its precise elliptical orbit, knew how long it took to revolve around its parent planet, Sirius, and were aware that it was made up of materials not found on earth-all this centuries before modern astronomers had even discovered that Sirius B existed.

\* \* \* \* \*

The Cleveland Indians were named in honor of Louis Sockolexis, a native Maine Indian who was the first American Indian to play professional baseball. Before it became the Indians, the Cleveland team was known as the Spiders.

\* \* \* \* \*

When a tidal wave is about to hit a coastline the water first recedes all the way to the horizon. If a person were foolish enough to do so, he could walk out several miles before the wave came smashing ashore.

\* \* \* \* \*

10-3