

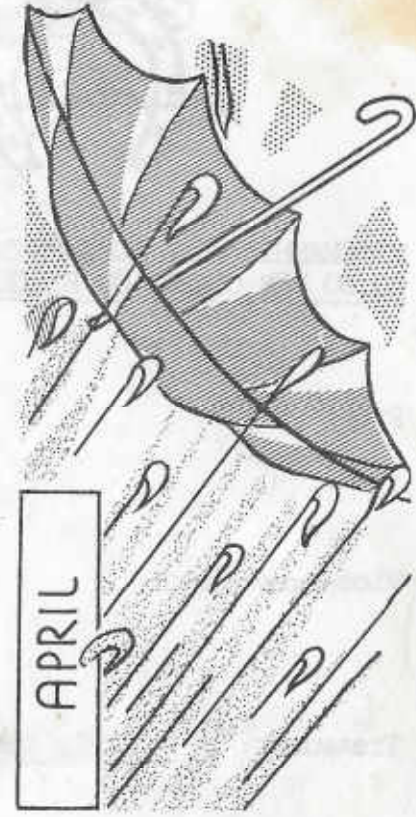
H. O. C. G. A.  
GEORGE O. MCGREW JR.  
BULLETIN SECRETARY  
6800 WOODWARD  
OVERLAND PARK, KANSAS 66204  
913-262-8822



FIRST CLASS  
APRIL 1980



APRIL 1980						
SUN	MON	TUE	WED	THU	FRI	SAT
6	7	8	9	10	11	12
13	14	15	16	17	18	19
20	21	22	23	24	25	26
27						





Heart of America  
Carnival Glass Association, INC.

MEMBERSHIP JUNE TO JUNE  
\$5.00 PER COUPLE OR SINGLE

PUBLISHED 15th. OF  
EACH MONTH

President: Cooley Miller  
7605 N.W. Eastside Drive  
Kansas City, Missouri 64152  
816-741-4635

Vice-President: Davis Shikles  
606 Leslie Drive  
Independence, Missouri 64055  
816-461-7285

Treasurer: Cora Kilgore  
4928 Neosho  
Shawnee Mission, Kansas 66205  
913-236-4546

Secretary: Lucile Britt  
3048 Tamarak Drive  
Manhattan, Kansas 66502  
913-539-1933

Bulletin Secretary: George O. McGrew  
6800 Woodward  
Overland Park, Kansas 66204  
913-262-8822

MINUTES OF THE MARCH HOACGA MEETING

The March meeting of The Heart of America Carnival Glass Association was held at the Holiday Inn in Overland Park, Kansas on March 23, 1980. The meeting was called to order by President Miller at 2:00 P.M.

President Miller welcomed two members to the meeting who have not been able to attend before. Mr. Mike Basey and Mr. Harold Hortney.

The minutes of the February meeting were read by Linda McGrew acting secretary and were approved as read.

Cora Kilgore then read the Treasurers report:

Balance 2/15/80	13,776.14
Expenditures	1,571.10
Deposits	3,130.50
Balance	15,326.54

The report was approved as given and is to placed on file for audit.

George Bolles reported on the club project to donate Carnival glass to the School of the Ozarks Museum. The school would not accept the donation under the stipulations set forth by the club. The proposal to donate the Carnival glass was voted on and was defeated.

Bob Grissom, Souvenir Chairman, then gave a report on the progress of the souvenir. An article on this report can be found in this issue.

A motion was made to pay for the expense of having Delbert Ward, of Fenton Glass Company, to come to our convention and answer questions on the manufacturing of our souvenirs. Mr. Ward was the foreman who designed our whimsies, and who oversaw the making of the souvenirs. The motion passed and the club was to check and see if Mr. Ward would be free to come to the convention for a couple of days.

George McGrew proposed several new postage rates on the bulletin to save expenses, but due to the great increase in work caused by this and the uncertainty of delivery of the bulletins it was decided to stay with the first class postage. The meeting was then ajourned until 4/25/80, 2 P.M. at the Holiday Inn, which will also be the annual business meeting.

Linda McGrew, Acting Secretary

Cooley Miller, President



FROM THE PRESIDENT

Convention time is here again. Don't forget April 24, 25, 26, 27. All information is in this bulletin. Reservations have surpassed last years and this will be the largest yet. If you have not made reservations and want to see Carnival Glass and meet Carnival Glass collectors then this is the place to come. Make this your vacation as we have a lot going for you.

Marge and I traveled with our Chairman of the 1980 Souvenir Committee, Bob Grissom, to the Fenton Art Glass Factory the week of March 17, during the time Fenton poured our ice green hat pin holder. I can honestly say the beautiful satin finish and color is the best of any new Carnival Glass made. You have to see it to believe it. I want to thank the Fenton Art Glass Company and Mr. Frank Fenton's personal attention he gave to our souvenir. We also want to thank Mr. Delbert Ward, the forman in charge who made our whimsies. This is a real quality souvenir and you will be proud to own one. If you have not ordered don't be late as we made a limited number of 600.

We would also like to extend our thanks to Bryon and Grace Rinehart who graciously invited us into their home to share their Carnival Glass and their hospitality.

Hope to see all of you at this years HDOGA convention.

Cooley Miller  
President



EDUCATIONAL TUMBLER SERIES

TWO MILLERSBURG ALL STAR TUMBLERS



MILLERSBURG CHERRIES - - MILLERSBURG CHERRIES VARIANT

This month we will discuss the Millersburg version of a cherry pattern which is one of many patterns featuring this popular fruit. Last month we brought to you the very rare "Northwood Cherries" tumbler. For your comparison with the "Northwood Cherries" we thought it would be advantageous to show you these two Millersburg tumblers at this time. This should help you to recognize the difference and also to describe the variation between the two Millersburg tumblers shown above.

The principle difference between these two pretty tumblers is shown in the photograph. The "Millersburg Cherries" is flared out at the base and at the top and does not have the ground bottom. In contrast, the "Millersburg Cherries Variant" is ground on the bottom and has almost straight up sides.

cont;



The detail of the cherries design on these two tumblers are basically the same. Both have the rayed star on the bottom of the base. It is interesting to note that the same pitcher is found with both types of tumblers. The tumblers are found in marigold, green, and amethyst. I have seen less of the amethyst tumblers in my travels around the country. I still have not found one of the flared out tumblers in amethyst for our collection, nor have I ever seen one anywhere. We have the variant in all three colors and the regular "Millersburg Cherries" in green and marigold, but still need it in amethyst.

Note the similarity in style of the "Millersburg Cherries" to that of the "Multi Fruits & Flowers" tumbler we pictured in the January 1980 bulletin. Both are shaped exactly the same. The Variant of course is shaped entirely different.

I might also point out that this pattern is quite often referred to as "Hanging Cherries" or "Millersburg Hanging Cherries". Besides the tumblers and pitcher this pattern was also made in a table set. It seems that these sets were purchased for actual table use, as quite often these pieces will be found that are damaged. In some cases you will find only the individual pieces such as a sugar in shops or antique shows. Various size bowls can also be found in this pattern. The plate in any size is extremely rare. The milk pitcher and compote are very, very hard to find. A whimsy banana boat shape compote has been reported in this pattern.

We think the "Millersburg Cherries" tumbler and its sister pattern "Millersburg Cherries Variant" are very fine tumblers and would add a great deal to any tumbler collection. They are also very desirable and widely hunted by those who collect the popular Millersburg Carnival glass. As mentioned last month, neither of these tumblers are as rare as the "Northwoods Cherries", but they are not exactly easy to find either. Both are, in my opinion, prettier than the "Northwoods Cherries" tumbler and they can be found in at least three colors where as we have seen the "Northwoods Cherries" only in marigold.

This is No. 28 of this series on Carnival glass tumblers. Next issue we will feature a tumbler from one of Fentons most beautiful water set patterns - - the "Blackberry Block".

By John & Lucile Britt

## PICTORIAL PATTERN PARADE

### GRAPE AND CABLE IN COBALT BLUE



I am sure that most all carnival glass collectors will recognize this popular pattern and can also see that it is a punch bowl. The thing that makes this one unusual and extremely rare is that it is in COBALT BLUE. This one is the middle size punch bowl and is reported to be the first cobalt blue one ever found in that size. I have seen the small size set and also the large master size set in cobalt blue, both also very rare, but this is the first middle size one I have ever seen. Mr. Harold Ludeman, probably one of the most versed G/C collectors, says he has never heard of a cobalt blue one in the middle size. This punch bowl and base had no cups with it when found. The bowl and base is not stippled.



I have a cobalt blue stippled cup in my collection, but do not have a plain background cup in that color. This one has super color and iridescence and was found by Dick & Emma Tilton of Gnadenhutten, Ohio. It will be on display at the HOACGA convention.

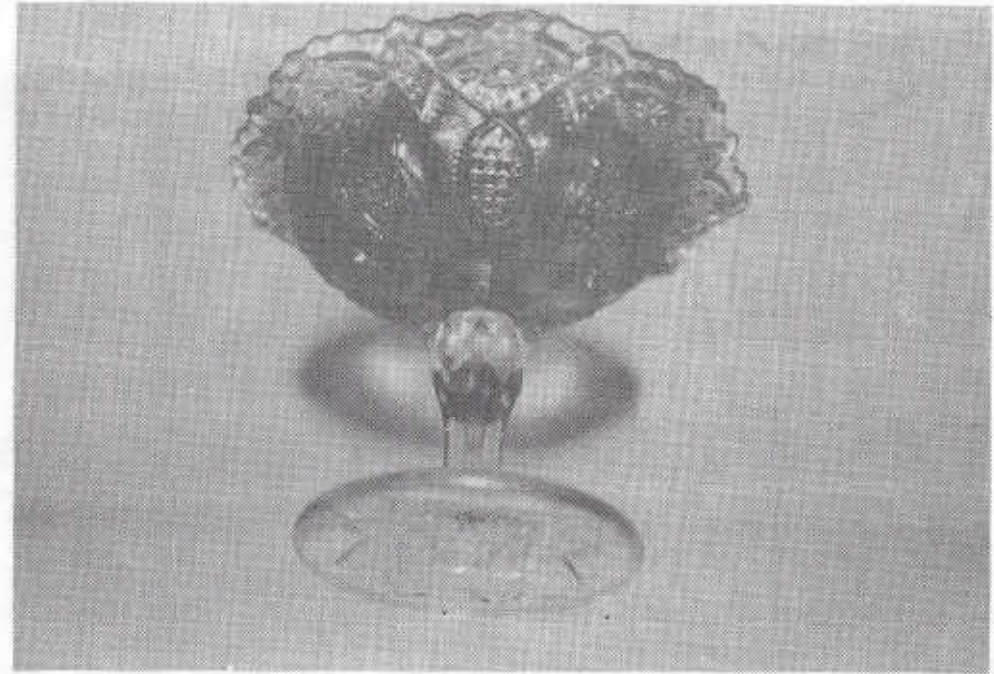


*"Alison," the mother said to her 9-year-old daughter, "open the oven and see if the cake is baked. Just stick in a knife and see if it comes out clean."*

*Alison returned in a few moments and reported, "Mom, the knife came out so clean. I stuck in all the other dirty knives."*

PICTORIAL PATTERN PARADE

HOBSTAR BAND COMPOTE



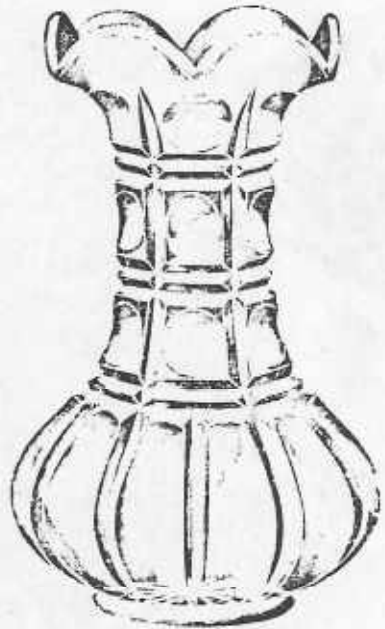
The snapshot of this pretty and very unusual marigold compote has been taken in the upside down position in order to show you the base pattern. Notice that the design is exactly the same as that on the base of the "hobstar Band" tumbler. This is the first compote in this pattern that I have seen. I am sure there must be others around, but I thought that this piece was most unusual and must be quite rare. It is not listed by Mrs. Hartung in a compote.

In the January issue of the HOACGA bulletin, we showed a picture of the "Hobstar Band" water pitcher and tumbler. From this picture, the Tilton's were able to recognize this pattern and purchased this compote. It will also be on display at the HOACGA convention for you to see.

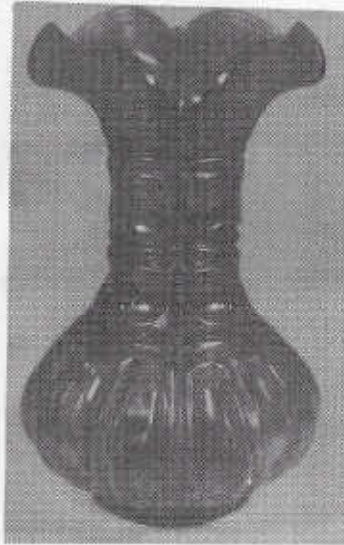
Pictorial Pattern Parade  
by John & Lucile Britt



## Carnival Cameos by Don Moore



747 blown vase  
4 dozen in barrel



THREE ROW - This unusual vase has been attributed to Northwood, but the reprint above from an Imperial catalog leaves no doubt as to its maker. These old catalogs are undated, so the specific year it was made is not known.

Very few of these have turned up. The two I have seen prior to finding the one shown here were purple. This one is marigold. We found it at a flea market near our home this past summer. A purple one sold for \$105 at the Chester Cripe auction in 1974. At a more recent auction, one brought \$275. It was also purple.

This piece measures  $7\frac{1}{2}$ " in height. Do not confuse it with the Two Row vase which is an entirely different pattern, even though quite similar in appearance.

# LOOKING FOR SOME ACTION?



You will be able to find it at this years HOACGA convention. Whether dancing, eating, visiting with old and new friends, attending the auction, or just viewing the many beautiful displays is your idea of fun you can find it here.



# Convention NEWS

\*\*\*\*\*

Following is a schedule of events for the various days at this years HOACGA convention in April. We all here in Kansas City extend a cordial welcome to each and every member to attend this convention as we feel that this will be the best yet.

## THURSDAY, APRIL 24:

1:00 - 4:00 P.M. Early Registration  
Pick up membership, convention program, name badges, 1980-1981 roster, Souvenirs, Banquet tickets and complimentary breakfast tickets.  
Visit the educational information booth on old and reproduced Carnival Glass patterns, by Dorothy and Bill Taylor.

## FRIDAY, APRIL 25:

8:00 AM-Noon Regular registration  
Pick up all tickets mentioned above and other items.

10:00AM-11:00AM Hospitality room, refreshments.

12:00 - 1:00PM Lunch

2:00PM Convention Room-Annual Business Meeting, Election of Officers,

4:00PM Visit and view displays in rooms-

4:00PM-5:00PM Hospitality room

6:00PM-6:30PM Champagne and social time

6:30 PM Banquet and guest speaker Rev. Leslie Wolfe of Villa Grove, Illinois

## SATURDAY, APRIL 26:

8:00AM-10:00AM Late registration, Souvenir pickup

10:00AM Auction by Mr. John Woody (Convention room)

3:00PM Auction of Whimseys, distribute room display awards.

7:30 PM Buffet dinner served (compliments of club)  
Fun night starts with an encore performance by "Lonnie Harper and his Country Music Band"

## SUNDAY, APRIL 27:

7:30AM-9:00AM Complimentary breakfast served by ticket only.

\*\*\*\*\*

### A LITTLE ABOUT THIS YEARS SPEAKER

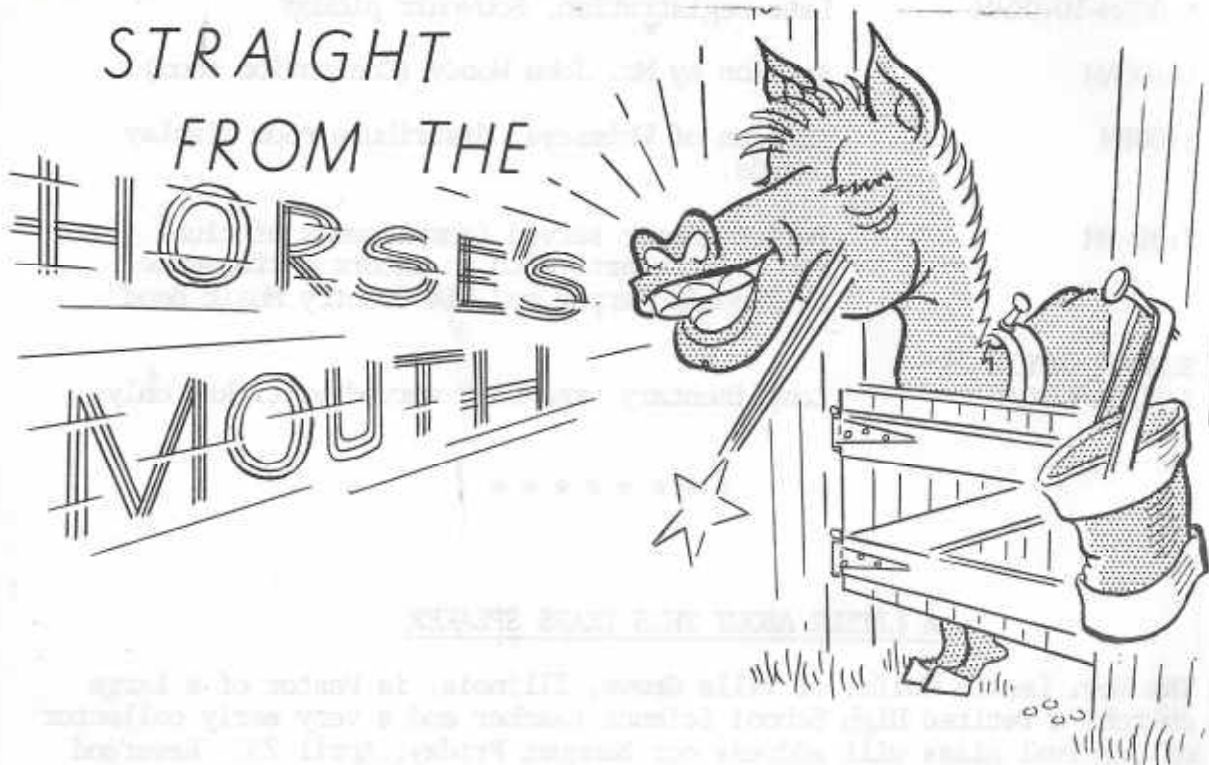
The Rev. Leslie Wolfe, of Villa Grove, Illinois, is Pastor of a large church, a retired High School Science teacher and a very early collector of Carnival glass will address our Banquet Friday, April 25. Reverend Wolfe started collecting about 1952, he has already collected and sold three large collections of Carnival Glass. He is considered an authority and one of the best informants on Carnival Glass. He was the first president of the "Society of Carnival Glass Collectors" (S.C.G.C.). This club was formed in Kansas City, Missouri. He was also the president of the International Carnival Glass Club.

We feel very fortunate and complimented to have Rev. Wolfe as our guest speaker this year at our annual convention.



EXPERT ADVICE

STRAIGHT  
FROM THE  
HORSE'S  
MOUTH



Have you ever sometimes looked at your pieces of glass and thought of how they were originally produced? Your Heart of America Carnival Glass Association has invited Mr. Delbert Ward as our guest at the convention. Mr. Ward supervises some of the glass making at Fentons. We invited him to be our guest in order to show our appreciation for the personal attention he has given the making of our souvenirs and we also thought that our members would appreciate the opportunity to discuss the details of glass making with him. So if you have any questions this will be your opportunity to get some information from the man who knows.

1980 CONVENTION ROOM DISPLAY REMINDER

Our prizes for room displays are the same as last year. Each room having a display will receive a trophy and the top five displays will receive a monetary award as follows:

- First Place-----\$100.00
- Second Place----- 80.00
- Third Place----- 60.00
- Fourth Place----- 40.00
- Fifth Place----- 20.00

After talking to Sadie Treff this week it looks like we are going to have a very good attendance April 24, 25, 26, and 27. Looking forward to seeing you and your displays at our convention.

"Good Luck"

Florence Cunningham  
Room Display Chairman





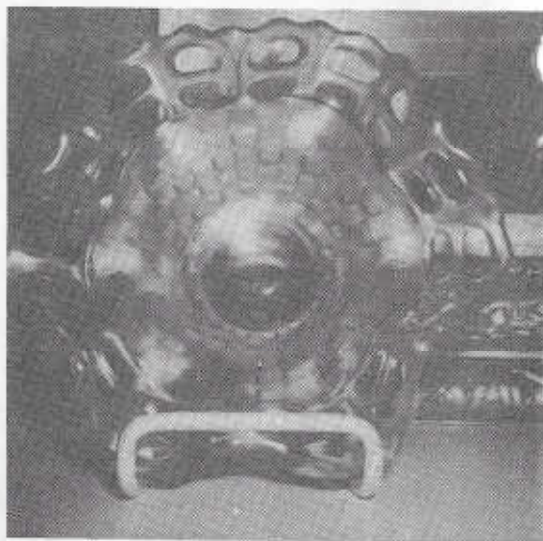
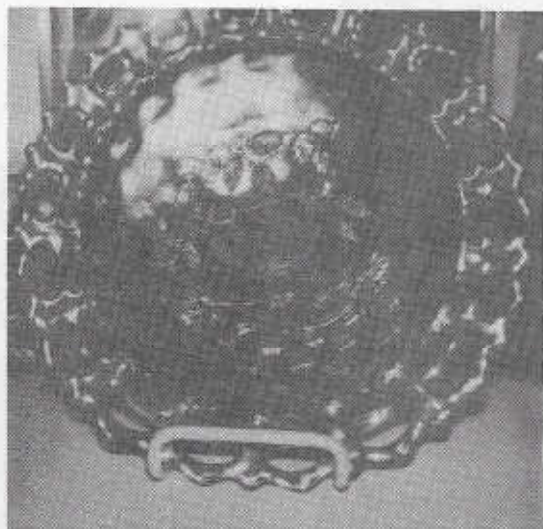


And speaking of room display here is another of the very fine displays that were present at last years convention. There seems to be an indication that there will be as many if not more than last year and with the same imaginative creativeness that was used last year.



Entertainment this year for the fun night portion of the convention, which will be on Saturday night will again be presented by Mr. Lonnie Harper and his country and western band. Evidently Lonnie and his band did an excellent job of entertaining last year because we had many request for an encore performance. So put some old work clothes on or overalls, or just dress to feel relaxed and join us Saturday night.





7 3/4" PLATE

5 3/4" HAT SHAPE W/ GOLD TRIM.

One of the things the 2 row open edge hat shapes have in common, is the basketweave exterior. This basketweave is different from the Northwood basketweave. However, in Preznick's book 1, plate 12, Mrs. Preznick shows this shape and pattern with the (N) in the base. I have never found one with the (N) or talked to anyone who has seen one. If we do, I'm afraid we will have to change the name of the Fenton 2 row open edge.

A close relative of this pattern and shape is the 3 row open edge. This is found in larger bowls. The most common shape being the six scallops around the edge, followed next by the banana boat and Jack in the Pulpit. All these have plain interiors, with the exception of the larger bowl with the blackberry interior, and the smaller bowls with advertising in the bottom of the interior. These are usually found in marigold. The smaller shapes are approximately 5 3/4" across and 2 1/2" tall.

cont:

I have a plate made from one of the two row open edge hats. It is marigold, and measures 7 3/4" across with the blackberry interior. One of the unusual pieces I have is the frosted blue hat with gold trim on the inside. Mrs. Hartung reports in book 8, page 33, that she has seen one in pastel blue in a silver frame making a miniature brides basket.

These hats can probably be found in a wider variety of colors than any other pattern or shape. Namely marigold, purple, amethyst, green, blue, aqua, vaseline, black amethyst, teal, ice blue, ice green, white, red, and red slag. The red color is very desirable, but probably not as scarce as some of the pastels. All the shapes and colors described in this article are in my collection, however, I am certain there are some I have missed or have not seen, and would be very happy to correspond with anyone who has anything different than the ones mentioned.

We will see you at the HOACGA Convention in K.C. in April. Happy Hunting.

Bill Richmond  
618 E. 2nd Ave.  
Ottumwa, Iowa 52501

\*\*\*\*\*





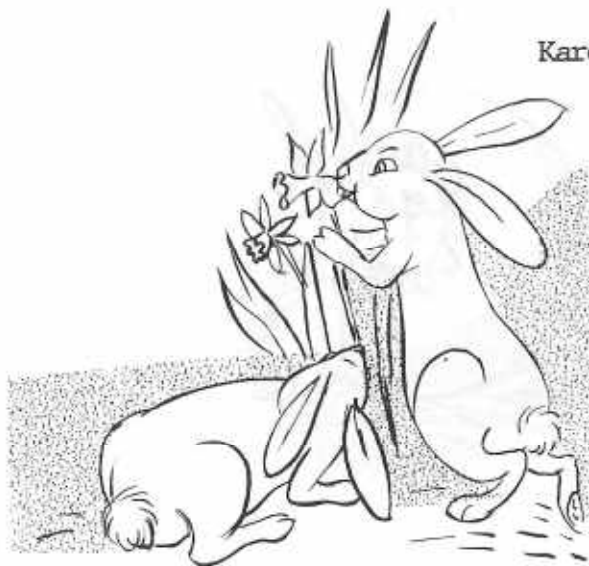
The Pacific Northwest Carnival Glass Club met February 9 at the Nendel's Inn in Tacoma. Prior to the dinner meeting a show and sale of old Carnival glass was held. Following dinner new members were introduced and notes were read from several members that were not able to attend the meeting. There were drawings held for twelve lovely Primroses which were provided by Fred and Pearl DeWald.

The convention plans are coming right along. The dates will be August 21, 22 and 23 at the Tyea Motel in Olympia. The Saturday evening banquet speaker will be Ed Garner discussing the use of black lights with Carnival Glass.

The May meeting will be held at the Flamingo Motel in Portland on the 17th starting at 6:30. We will be having a silent auction consisting of any collectible items that are donated by our club members. The program will be on "Carnival Glass that's use is unusual". All members have been asked to bring a piece from their collections and discuss it.

After our dinner and business meeting an interesting and informative program was enjoyed by everyone presented by Mrs. Willa Carty on Heisy Glass. Mrs. Carty had set up a lovely display of her Heiset Glass and several members of the club brought their pieces of irridized Heisy for display.

Karen Engel, Secretary



Ralph Simendinger, 1002 Maycliffe Pl., Cincinnati, Ohio, 45230  
PH: 513-231-5381

M EI	Horses Head 7½" plate	\$90.00
P EI	G/C Hatpin holder	175.00
P GI	Fisherman mug	85.00
M EI	Robin mug	35.00
B EI	Orange Tree mug	45.00
P EI	Imperial Grape water bottle vase	150.00
B EI	Holly Berry 10" plate	90.00
CB EI	Loving Cup very small chip on handle	125.00
AMBEI	Scales 6½" plate, honey amber	40.00
P GI	Butterfly & Fern water set, tumblers ground on bottom.	475.00

\*\*\*\*\*

M/M Don Akler, P.O. Box 3016, Farmington, N.M. 87401  
PH: 505-325-8347

M EI	Windmill milk pitcher	\$48.00
G EI	(N) Daisey & Plume ftd rosebowl	83.00
M EI	Whirling Star 9" bowl	60.00
B EI	Fenton basket square with no interior pattern	43.00
IM EI	Stork & Rushes tumbler	32.00
M EI	Wide Panel 11" bowl	38.00
M EI	Double stemmed Rose 8½" ftd bowl	53.00
G EI	(N) 10½" Rays bowl	73.00
M EI	Four Flowers 8" bowl	48.00
M GI	Strawberry sauce 5½"	18.00

\*\*\*\*\*

Paul Berube, 11 Doris Ave., Tiverton, R.I. 02878  
PH: 401-625-5303

M EI	Waffle Block punch bowl & base	\$40.00
PO EI	(N) Cherry 9½" bowl	30.00
P EI	Rose Show bowl	115.00

\*\*\*\*\*



FOR SALE

Linda Halfacre, 1618 McKinley, Beloit, Wi., 53511  
PH: 608-362-6109

AQ EI	Blackberry hat shape	\$30.00
PO EI	Nautalius, not signed, base chip	65.00
W EI	(N) Bushel Basket, chip on foot, internal crack	25.00
M EI	Bouquet tumblers have 6	each 28.00
M EI	Waterlily & Cattail tumblers-have 6	each 20.00
M EI	(N) Flute tumbler	25.00
S EI	Windmill milk pitcher	95.00
AMBEI	Windmill milk pitcher	95.00
M GI	Poinsetta milk pitcher	28.00
M EI	Butterfly & Berry 7 piece berry set	125.00

\*\*\*\*\*

Norma Morrison, 3912 Pennsylvania Ave., Eureka, Ca., 95501  
PH: 707-443-1319

G GI	Fenton's Flowers rosebowl	\$50.00
M EI	Pineapple rosebowl (English)	45.00
IB EI	Fine Cut & Roses with Fancy interior rosebowl	
	large slice off inside of one foot	60.00
CLMGI	Leaf Chain bowl	40.00
B EI	Persian Medallion bowl	50.00
EI	Celeste blue Fenton #401 night set, small flake	
	rim of water bottle	50.00
M EI	Scroll Embossed with Eastern Star ext. compote	30.00

\*\*\*\*\*

John Stewart, 99 Aster Circle, Weymouth, Mass., 02188  
PH: 617-337-1304

M EI	Millersburg Swirled Hobnail Ladies spittoon	\$395.00
M EI	Millersburg Roses & Fruits bon-bon, base flake	275.00
W EI	Many Fruits punch bowl and base	800.00

\*\*\*\*\*

FOR SALE

Melvin Ruser, 351 E. Memorial Rd., Walcott, Iowa, 52773  
PH: 319-284-6330

BO EI	Hearts & Flowers compote	\$100.00
A EI	G/C bowl	80.00
IB EI	Peacock & Urn compote	70.00
PM EI	Peacock & Urn plate	230.00
AM EI	Maple Leaf ice cream	25.00
B EI	Leaf & Beads rosebowl	75.00
S EI	Diamond ring bowl	50.00
AM EI	(N) Strawberry bowl	50.00
M EI	(N) G/C powder jar	60.00
M EI	Tornado vase ribbed	100.00

\*\*\*\*\*

Dick Hatscher, Walnut Hill road, Bethel, Conn. 06801

PO EI	Rare Carolina Dogwood plate 8 5/8"	\$125.00
G GI	Millersburg 9 1/2" 4 flowers varient plate	169.00
G EI	Millersburg Wild Rose lamp	595.00
G EI	Millersburg Flute vase, in Edwards rarity book	140.00
B EI	Horse Medallion 3 ftd bowl, 1 side up, 1 down	59.00
W EI	Scarce Heavy Shell candleholders, 1 perfect, 1 repaired	85.00
B EI	Strawberry Scroll tumbler	225.00
R EI	Rare Colonial Stretch tumbler	345.00
R EI	Peacock lamp complete	595.00
R EI	Dragon & Lotus bowl, collar base	365.00

\*\*\*\*\*

Linda Wheeler, 916 Fountain Ave., Louisville, Ky., 40222  
PH: 502-426-8684

M EI	474 punch cup	\$12.00
A EI	Stork & Rushes punch cup, heat checks	14.00
G GI	(N) Flute punch cup	13.00
M GI	Maple Leaf tumbler	18.00
M EI	Twins fruit bowl base	21.00
W EI	Grape Delight rosebowl, feet chipped	45.00

\*\*\*\*\*



FOR SALE

Ruth Schinestuhl, 55 Natalie Terr., Absecon, N.J. 08201  
PH: 609-641-1814

M EI	Coin Dot pitcher with 4 tumblers	\$275.00
M EI	Horse Medallion nut bowl 3 footed	65.00
M EI	Pine Cone plate 6"	30.00
M EI	Small Panther berry bowl	25.00
B EI	Atlantic City Elks bowl	300.00
G EI	G/C stippled bowl	50.00
P EI	Tiger Lily tumbler	40.00
P EI	Millersburg Marilyn tumbler	95.00
B EI	Rose Show plate	275.00
AO EI	Peacock on the Fence bowl	350.00

\*\*\*\*\*

Joseph Mello, 535 Fish Road, Tiverton, R.I. 02878  
PH: 401-624-2174

M EI	Octagon decanter	\$35.00
M EI	Octagon wines have 8	each 20.00
M EI	Butterfly & Berry master berry bowl, fantail int	35.00
M EI	Fenton basket round	15.00
AQ EI	Fenton basket 2 sides up	40.00
W EI	Northwood Peacock plates 2	each 175.00
B EI	Holly bowl	35.00
A EI	Cherry bowl 3 footed	35.00
IM EI	Butterfly & Berry tumblers 3	each 25.00
A EI	G/C tumblers 4	each 32.00

\*\*\*\*\*

FOR SALE

Mike Lauri, 2100 W. 79th Terr. Prairie Village, Kans. 66208  
PH: 913-341-6053

G EI	Strawberry bowl	\$40.00
P EI	Butterfly & Tulip square bowl	825.00
AQ EI	Butterfly & Berry vase	80.00
S EI	Soda Gold tumbler	40.00
VS EI	Orange Tree mug	75.00
P EI	Circled Scroll vase	42.50
G EI	Orange Tree mug	85.00
P EI	Beaded Shell mug	58.00
AQ EI	Peacock on the Fence bowl	125.00
M EI	Stream of Hearts compote	36.00

\*\*\*\*\*

Mrs. F.M. Whitley, 1041 Cheshire Lane, Houston, Texas, 77018  
PH: 713-681-0807

DM EI	Double Dutch footed bowl 9"	\$25.00
M GI	Stippled Strawberry tumbler	100.00
B EI	Enameled Apple Blossom tumbler	70.00
W GI	Persian Gardens bowl 11½"	150.00
M EI	File tumbler	95.00
G PI	Grape & Cable pin tray	35.00

\*\*\*\*\*

Betty Klutts, 3800 NW. 24th, Oklahoma City, Ok. 73107  
PH: 405-946-7497

DM EI	Hobnail butterdish bottom 4 5/8" dia	\$75.00
P EI	G/C lid to large covered compote 5 5/8" dia	75.00
P EI	Pillar & Sunburst wine complete, w/ 4 wines	350.00
IB EI	Poppy Show 9" plate	250.00

\*\*\*\*\*



FOR SALE

Frances Gannon, 8743 Branton, Highland, Ind., 46322  
Ph: 219-923-8134

R EI	HOACGA whiskey decantur & 6 shots	\$175.00
G EI	(N) G/C water pitcher	250.00
P EI	(N) G/C water set 7 piece	375.00
P EI	(N) Oriental Poppy tumbler	each 40.00
W EI	(N) Peacock & Urn large ice cream bowl	160.00
M EI	Octagon wine decantur complete-has small nick	60.00

\*\*\*\*\*

Mr Charles A. Adams, 2211 Sunset Blvd., Los Angelus, Ca. 90026

M EI	Rising Sun pitcher, pedestal base	\$1,500.00
G EI	Butterfly & Berry master berry bowl	95.00
M EI	Sailboat wine	95.00
PO EI	Fishnet Epergne	200.00
G EI	Feathered Serpeant 10" bowl	55.00
S EI	Fashion creamer	40.00
P EI	Heavy Grape (imp) small plate	80.00
G EI	Heavy Grape (Imp) small plate	70.00
A EI	G/C cologne bottle with stopper	185.00

SASE for current sales list.

\*\*\*\*\*

Mrs. Johnnie Ball, 1304 S. 9th St., Ponca City, Ok. 74601

P EI	G/C open compote (N) 9½" W, 8½" H	\$375.00
P EI	G/C covered compote 7" W, 9½" H	350.00
P EI	G/C table setting	550.00
G EI	Sunflower pin tray	200.00
M EI	Kittens saucer 2 sides turned up	40.00
LM GI	Kittens cup	40.00
M EI	Kittens cereal or spooner 4 scallops around	65.00
W EI	Peacock on the Fence plate	175.00
P EI	G/C card dish 2 sides turned up	55.00
A EI	G/C footed bowl	50.00

\*\*\*\*\*

FOR SALE

Larry Yung, 5758 Nightingale Ct., Cincinnati, Oh., 45227  
PH: 513-271-6399

AMBEI	Open Rose flat plate 9"	\$27.00
M EI	Heavy Grape chop plate, small flake on edge	47.00
P GI	Springtime water pitcher	400.00
G EI	Wide Panel side lily	40.00
P EI	Flute open sugar tiny nick	32.00
IB EI	Wisteria tumbler base flake	270.00
A EI	Field Flower pitcher	300.00
B EI	Orange Tree punch base, 1½" crack or check	20.00
G EI	Graceful compote-vase (N)	40.00
B EI	Orange Tree bowl 8½" round	37.00

\*\*\*\*\*

Wesley R. Strain, 832 Carson Rd., Ferguson, Mo., 63135  
PH: 314-524-5608

A GI	Daisy Block Rowboat	\$225.00
AMB EI	Heavy Grape chop plate	150.00
P EI	G/C butter top	75.00
G GI	Millersburg Cherry butter top	50.00
M EI	Lustre & Clear water pitcher	125.00
M EI	Rising Sun water pitcher (large)	2000.00

\*\*\*\*\*

Singleton Bailey, P.O. Box 95, Loris, S.C. 29569  
Ph: 803-756-7495

M EI	Horseshoe plate	\$110.00
M EI	Stork & Rushes mug	20.00
M EI	Robin mug	30.00
P EI	Fish & Cattails mug	75.00
A EI	Beaded Shell mug	55.00
G EI	Singing Bird mug (N)	75.00
P EI	Singing Bird mug (N)	45.00
B EI	Orange Tree mug (small)	30.00

\*\*\*\*\*



FOR SALE

Wayland Billingsley, 206 N. Union St., Appleton, Wi. 54911  
PH: 414-733-3102

- A EI Floral & Grape water set 7 piece \$350.00
- A EI Peacock at the Fountain butter dish, creamer, and spooner. Creamer has no harm flake on spout 375.00
- PO EI Carolina Dogwood bowl, milk glass back, spray inside 125.00
- AMBEI Loganberry vase 175.00
- CB EI Grape Fernery or nub bowl, ftd 60.00
- A EI Diamond & Sunburst decantur, stopper, & 4 wines 340.00
- W EI Brocaded Summer Garden compote 65.00
- S EI Imperial Grape 10 3/8" bowl 39.00
- M EI Imperial Grape decantur, 1 wine stopper repaired 70.00
- M EI 7 piece Heavy Grape berry set 115.00

\*\*\*\*\*



WANTS

Mrs. F.M. Whitley, 1041 Cheshire Lane, Houston, Texas, 77018  
PH: 713-681-0807

- Banded Diamond tumbler
- Forty-Niner tumbler
- Diamond tumbler Owens #34
- Enameled Windflower tumbler Owens #46
- Tiny Hobnail Miniature tumbler Owens #95
- Inverted Coin Dot N Variient #102
- Near Cut Souvenir Owens #124
- Ranger Juice-Owens #144

\*\*\*\*\*

Ruth Schinestuhl, 55 Natalie Terr., Absecon, N.J. 08201  
PH: 609-641-1814

- AO Hearts & Flowers bowl
- W Embroidered Mums
- G Embroidered Mums
- IB G/C fruit bowl 3 footed

\*\*\*\*\*

Marcelle Smith, 35449 Oakview Dr., Brownsville, Or. 97327  
PH: 503-466-5520

- M 6 or 8 matching NU-ART shades, soft satin finish. Prefer Wide Panel, Fish Scale or Drape pattern
- G G/C Powder Box

\*\*\*\*\*

Elmer L. Cooper, Box 162, McDougal, Ark. 72441  
PH: 501-259-3531 Tues, Wed. or Thur. 8:00 to 5:00

Any HOACGA souvenirs 1974 thru 1978, mint condition only

\*\*\*\*\*



WANTS

Linda Wheeler, 916 Fountain Ave., Louisville, Ky., 40222  
PH: 502-426-8684

- M G/C cookie jar lid
- W Dahlia sugar lid
- W Acorn Burrs punch bowl top
- M Carnival hen bottom
- P Peacock at the Fountain punch cups
- M Orange Tree punch cups

\*\*\*\*\*

John Stewart, 99 Aster Circle, Weymouth, Mass. 02188  
PH: 617-337-1304

- Dandelion mugs
- Knights Templar mugs
- Wishbone Epergnes and parts
- Fine Cut and Roses rosebowls
- Persian Medallion rosebowls
- No damaged pieces please.

\*\*\*\*\*

Larry Yung, 5758 Nightingale Ct., Cincinnati, Oh. 45227  
PH: 513-271-6399

- P Inverted Feather lid I have green one now
- M Octagon pepper or salt shaker

\*\*\*\*\*

Dorothy & Phil Perry, 221 Washington St., DesPlaines, Ill., 60016  
PH: 312-824-3563

- Northwoods Cherry tumbler
- Cone & Tie tumbler
- Banded Diamonds tumbler

\*\*\*\*\*

WANTS

Mrs. Lloya McDaniel, 2709 Lincoln, Joplin, Mo., 64801  
PH: 417-623-3926

- M 1 pair of Wide Panel candle holders

\*\*\*\*\*

Singleton Bailey, P.O. Box 95, Loris, S.C. 29569  
PH: 803-756-7495

- Any color Big Fish or Trout & Fly bowls
- Any color mugs
- Any color Millersburg Peacock bowls
- G Acorn Burrs covered sugar
- B Footed Orange Tree covered sugar
- P G/C Fernery
- P G/C Tankard tumblers
- P G/C Open compote
- Any A/O, Red, Ice Green, or Ice Blue pieces

\*\*\*\*\*

Wesley R. Strain, 832 Carson Rd., Ferguson, Mo. 63135  
PH: 314-524-5608

- IB Waffle Block punch bowl base
- M Stork & Rushes punch bowl base
- A Golden Harvest Decantur stopper

\*\*\*\*\*



FASCINATING FACTS

The substance that most resembles the chemical composition of human blood is sea water.

\*\*\*\*\*

In 1816 there were frosts and snow in the northeastern United States in every month of the year. Similar weather conditions prevailed in France, Italy, and Spain. The year 1816 became known throughout Europe and the United States as "the year without a summer."

\*\*\*\*\*

If one were to capture and bottle a comet's 10,000 mile vapor trail the amount of vapor actually present in the bottle would take up less than 1 cubic inch of space.

\*\*\*\*\*

If the ice floes of Antarctica were to melt, they would raise the ocean level by 240 feet, submerging a quarter of the world.

\*\*\*\*\*

The longest indoor corridor in the world is the Grande Galerie in the Louvre, built in 1607 by Henry IV of France. On rainy days the King would clear the entire passageway, move trees, rocks, and grass turf, inside, and stage a fox hunt with his entire court down the middle of the corridor.

\*\*\*\*\*

There are a number of Americans who are related to Napoleon Bonaparte. Napoleon's youngest brother, Jerome, married an American.

\*\*\*\*\*

Henry Wadsworth Longfellow, who made John and Priscilla Alden famous in his poem "The Courtship of Miles Standish" was related to both of these actual historical personages.

\*\*\*\*\*