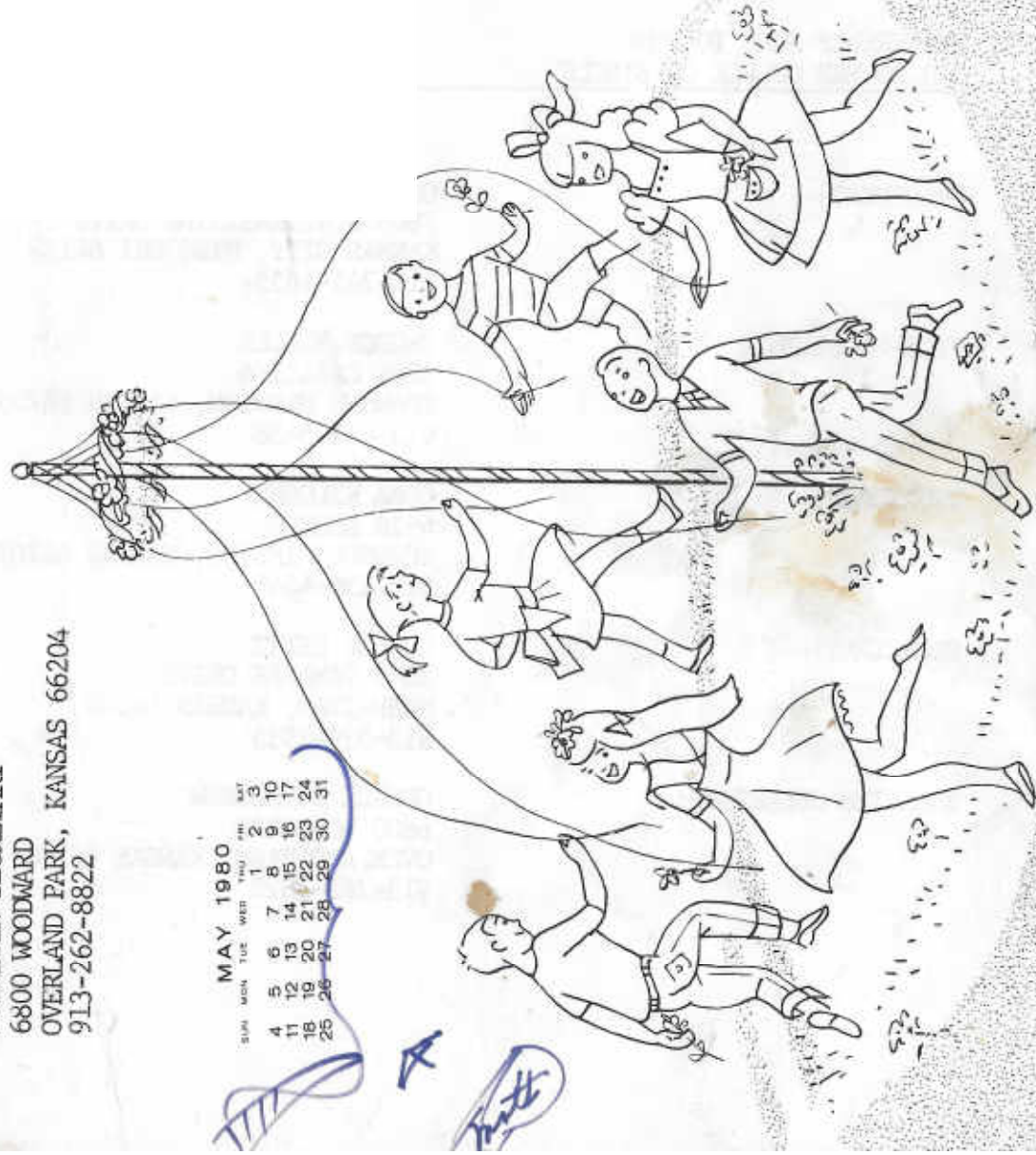


H.O.A.C.G.A.  
GEORGE O. MCGREW JR.  
BULLETIN SECRETARY  
6800 WOODWARD  
OVERLAND PARK, KANSAS 66204  
913-262-8822

MAY 1980						
SUN	MON	TUE	WED	THU	FRI	SAT
				1	2	3
4	5	6	7	8	9	10
11	12	13	14	15	16	17
18	19	20	21	22	23	24
25	26	27	28	29	30	31





Heart of America  
Carnival Glass Association, INC.

MEMBERSHIP JUNE TO JUNE  
\$10.00 PER COUPLE OR SINGLE

PUBLISHED 15th OF  
EACH MONTH

PRESIDENT: COOLEY MILLER  
7605 N.W. EASTSIDE DRIVE  
KANSAS CITY, MISSOURI 64152  
816-741-4635

VICE-PRESIDENT: GEORGE BOLLES  
5204 CATALINA  
SHAWNEE MISSION, KANSAS 66205  
913-432-5438

TREASURER: CORA KILGORE  
4928 NEOSHO  
SHAWNEE MISSION, KANSAS 66205  
913-236-4546

SECRETARY: LUCILE BRITT  
3048 TAMARAK DRIVE  
MANHATTAN, KANSAS 66502  
913-539-1933

BULLETIN SECRETARY: GEORGE O. MCGREW  
6800 WOODWARD  
OVERLAND PARK, KANSAS 66204  
913-262-8822

HEART OF AMERICA CARNIVAL GLASS ASSOCIATION

ANNUAL BUSINESS MEETING

April 25, 1980

President Cooley Miller called the 1980 annual business meeting of the H.O.A.C.G.A. to order at 2pm at the Holiday Inn in Overland Park, Kansas.

His first order of business was to recognize the Club officers and they followed by giving their reports. The Secretary, Lucile Britt read the minutes of the last meeting and they were approved and placed on file. Cora Kilgore, Club Treasurer, read the treasurers report with a balance as of April 15, 1980 of \$13,814.52. The total of expenses was \$14,132.75 leaving a balance on hand of \$8,336. Total deposits at this time was not stated.

Recognition was paid to Convention Chairwoman, Sadie Treff, for her fine work and to Bob Grissom for his mug information that was made available for the notebooks.

The President then recalled the business of the year and invited any comments from the floor on the issues taking place in the club. The members wished to thank Mr. & Mrs. Byron Rinehart for helping secure information on the possible candle lamp souvenir. Mrs. Tilton commented on the proposal to place articles about Carnival glass in national magazines. She stated that the request was for articles not so much as for funding.

Election of new officers then took place with the following as the 1980-81 Club Board -

President - Cooley Miller  
Vice President - George Bolles  
Secretary - Lucile Britt  
Treasurer - Cora Kilgore  
Bulletin Secretary - George McGrew

Mr. & Mrs. Tilton were asked to count the ballots.



Under New Business, a motion was made by Roland Kuhn to limit the offices of President and Vice President to a period of not more than 2 consecutive years. The motion was seconded by Betty Greb. Comments were heard from the floor pro and con. The question was brought up, does this action require an amendment to the by-laws. The Club lawyer, Richard Burton, who was in attendance stated that the motion was out of order. The motion would have to be made to amend the by-laws to read that these 2 offices would be limited to a 2 year period. The motion was then made to state this. The members voted and the motion failed.

A motion was then made to adjourn.

---

Lucile Britt, Secretary

---

Cooley Miller, President

# NOTICE ON DUES

THE 1980-1981 MEMBERSHIP DUES WILL BE DUE JUNE 1, 1980. THE DUES FOR THIS YEAR HAVE BEEN RAISED TO 10.00 DUE TO THE INCREASE IN THE COST OF PRINTING THE BULLETIN AND OTHER INCREASES IN THE COSTS OF RUNNING THIS ASSOCIATION.

IN ORDER TO BETTER FACILITATE THE KEEPING OF RECORDS AND MAILING LISTS ALL MEMBERSHIPS THAT ARE NOT PAID BY JULY 15, 1980 WILL BE DROPPED FROM THE MAILING LIST. LAST YEAR WE SPENT IN EXCESS OF \$140.00 ON POSTAGE MAILING BULLETINS TO PEOPLE WHO NEVER INTENDED TO RENEW. THIS IS NOT EVEN FIGURING THE COST OF THE EXTRA BULLETINS BEING PRINTED.

WE HOPE THAT YOU WILL ALL UNDERSTAND THE AMOUNT OF WORK THAT THERE IS KEEPING OUR RECORDS UP TO DATE AND MAIL YOUR DUES IN AS SOON AS POSSIBLE, TO THE CLUB SECRETARY: LUCILE BRITT, 3048 TAMARAK DR, MANHATTAN, KS.

GEORGE O. MCGREW JR.  
BULLETIN SECRETARY



THE ARTISTIC BLACKBERRY BLOCK



The "Blackberry Block" is certainly one of our most artistic and well designed Carnival glass water set patterns. Unfortunately this pattern was made only in the water sets. The pitcher is of the tall tankard type and is very beautiful indeed. The tumbler has nine panels around its surface, each panel having three blocks. The tumbler's distinguishing features are its blackberry sprays and the block or checkerboard background. The blocks are separated both horizontally and vertically by a pronounced cable that adds to the beauty of the tumbler. There are three of these blackberry sprays of fruit and leaves one for each of the three mold parts used in making the tumbler. The upper and lower rows of blocks that go around the tumbler contain the fine diagonal lines and the center row blocks have been left clear. The bottom of the base is plain with no type of star whatsoever.

cont;

The "Blackberry Block" is a Fenton pattern. Attribution to Fenton is based on mold drawings found in that company's factory, dated 1908 and 1909. A very good picture of the water pitcher can be seen in Heacock's fine book on Fenton glass called "Fenton Glass, the first twenty-five years". It is pictured on page 40 of that book. It is not a rare pattern, but it is not a common one either. It was made in Marigold, Cobalt Blue, Amethyst, Green and Frosty White. You will find the marigold and blue colors most often. Like a number of other Fenton patterns, the amethyst and green colors are somewhat harder to locate. The white tumblers along with the matching tankard type pitcher can certainly be classified as rare. I have seen very few of these "Blackberry Block" water sets in white. If you own either of these pieces in white, you are indeed fortunate. If you own them in any of the other four colors, I am sure that you are very proud of your possession. The "Blackberry Block" tumblers have always been one of my favorite tumbler patterns and of course the one in frosty white has to be one of our top rated tumblers.

This is No. 29 in this series of Carnival glass tumblers. Next month we will discuss one of Imperials most popular patterns - the "Lustre Rose" and its sister pattern the "Lustre Rose Variant". This is without a doubt one of our most commonly found tumblers. But even here in the case of this so called easy to find pattern, there are some colors that are very hard to obtain. See next month's column for the very distinct difference between the "Lustre Rose" and the "Lustre Rose Variant" tumblers.

John & Lucile Britt

\*\*\*\*\*

"It might be well to bear in mind that whenever you're coasting you are either going downhill or losing momentum."



PICTORIAL PATTERN PARADE

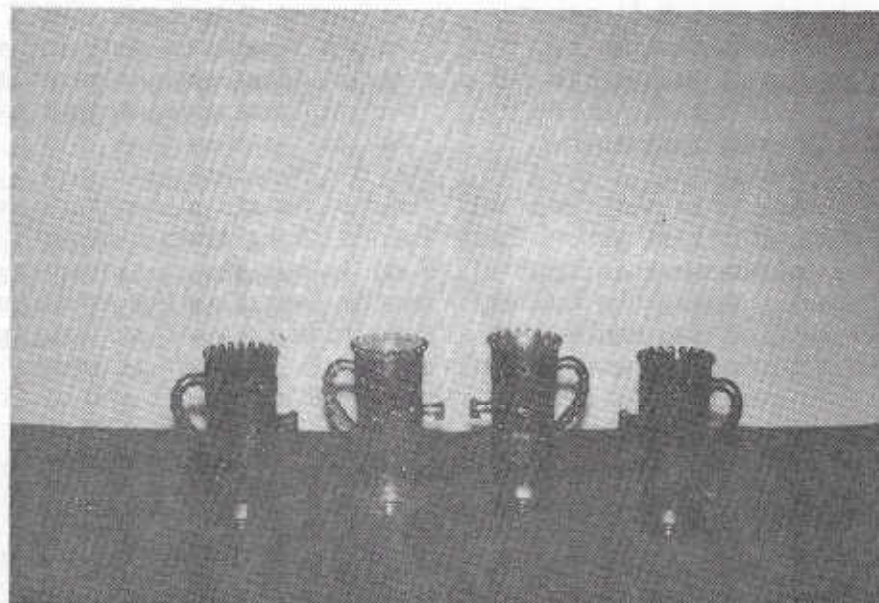
LEAF CHAIN PLATE IN AQUA OPAL



Leaf Chain plates are fairly common, especially in marigold, but here we show you one in aqua opalescent. This opalescent color makes this plate extremely rare. Other aqua opal pieces shown here are the Singing Birds Mug, Grape and Cable powder jar and the popular Dandelion mug.

This picture was taken at one of the Carnival glass conventions from the display of Mr. and Mrs. Craig Heeley.

THE POPULAR IVY TOWN PUMP



The town pump is one of Harry Northwoods many prize achievements in glass making. When I started collecting Carnival glass, this was one of the pieces I most wanted. I ended up with the four pumps shown above in amethyst, marigold, green and purple. The purple is the most common and is really not too hard to find. You don't come across a pump in marigold very often however, and it is much harder to find in marigold than in purple. The green pump is very rare, and is very hard to come by. I am not sure whether Mr. Northwood had a vase in mind here or just a pretty piece to set on a table or shelf. It certainly would fill in well in any of these places. Today it adds beauty to collections all over the nation. Most of these pumps have the famous "N" in a circle on the inside of the bottom. The pump is 6½" tall and measures 2½" in diameter. The pattern featured on this pump is an all over design of trailing ivy vines and leaves. The tree trunk motif is used on the handle and spout. The spout is solid glass and can not be used for pouring.

Pictorial Pattern Parade  
by John & Lucile Britt



A FEW WORDS OF THANKS

I would like to take a little time and space to thank all of you for electing me Bulletin Secretary for another term. As I look back to the beginning of my first term I have to stop and wonder at just how I managed to survive those first several months. But with the letters of encouragement that I received from those of you who sent them I managed.

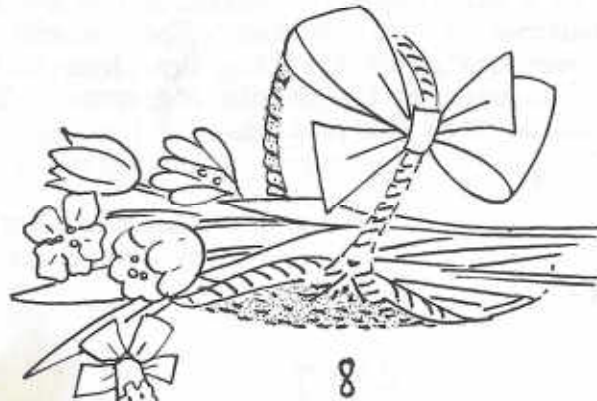
I hope that this next year will enable me to present an even better bulletin to all of you. There is one thing that I would like all of you to remember is that all I do is put the bulletin together. What really makes the bulletin is the contributing articles sent to me by each of you members that take time to research and compose these articles. I have said it once and I'll say it again - there are some really fine people in the HOACGA, people who I am honored to know and call a friend.

George O. McGrew Jr.  
Bulletin Secretary

\*\*\*\*\*

Mr. John Decker who we reported was severely injured before Christmas by an out of control automobile while he was out walking, is now back at home after spending several months in the hospital. Everyone expects to see John and his wife Lavina back on the Carnival trail soon. In the meantime any cards or letters to him from his friends would be much appreciated.

\*\*\*\*\*



FOR SALE

Harold C. Meyer, Route 2, Alva, Okla. 73717  
Ph: 405-327-1724

G EI	Oriental Poppy water set (N) 7 piece	\$950.00
P EI	Millersburg Strawberry bowl	175.00
R EI	Millersburg Acorn bowl 6"	190.00
IG EI	Peacock on the Fence plate	195.00
W EI	Round-up plate ruffled edge	89.00
M EI	Crabclaw water set 5 piece	250.00
M EI	Goodluck bowl	97.50
PO EI	Swirl rosebowl, pinched 3 sides	65.00
M EI	Daisy & Lattice tumblers (2)	each 20.00
M EI	Oriental Poppy tumbler	50.00

\*\*\*\*\*

Mary Ellen Warren, 9623 Hunters Lane, Spring Grove, Ill. 60081  
PH: 815-675-2112

IB EI	Wishbone 8½" footed bowl	\$150.00
IG EI	Poppy Show bowl	265.00
M EI	Wishbone 10½" flat plate (N)	375.00
B EI	Stork & Rushes tumbler with beading	24.00
A EI	Late (inverted) Thistle tumbler	275.00

\*\*\*\*\*

Mrs Clarence Osterbuhr, 802 Hackberry, Garden City, Kansas 67846  
Ph: 316-275-5615

PO EI	Four Flowers 6½" plate	\$45.00
PM EI	Holly 10" plate	40.00
DM EI	Tree Bark 8" plates have 6	each 5.00
DM EI	Fenton's Heavy Grape 7½" plate	40.00
P EI	Fenton's Heavy Grape 8" plate sliver off back	40.00
G EI	Rare Vintage 7½" plate, tiny chip	40.00
W EI	N's Peach 7 piece berry set, good gold	250.00
IB EI	N's Peacock at the Fountain 7 piece berry set	425.00
CB EI	Grape & Gothic Arches complete table set	325.00

\*\*\*\*\*



FOR SALE

M/M Don Akler, 3802 N. Crestridge, Farmington, N.M. 87401  
PH: 505-325-8347

M EI	Rose Show 4½" tumbler	\$20.00
M GI	Orange Tree mug	45.00
AMBEI	3" flared vase	19.00
P GI	Louisa 8½" bowl 3 ftd	25.00
M EI	Double Stemmed Rose 8½" dome ftd bowl	53.00
PO EI	6" X 5" Rib & Panel vase	38.00
M EI	8½" Star & File bowl	50.00
M EI	Round Robin sugar & creamer pair	16.00
G EI	9" Stippled Rays bowl with Christmas candy edge	63.00
G EI	(N) 10½" Stippled Rays bowl	73.00

\*\*\*\*\*

Lamar Sharp, 719 W. Brubaker Valley Rd., Lititz, Pa. 17543  
PH: 717-626-5521

W EI	(N) Memphis punch bowl base	\$195.00
A EI	(N) Memphis punch bowl base	95.00
P EI	(N) G/C punch bowl small base	145.00

\*\*\*\*\*

Jos Mello, 535 Fish Road, Tiverton, R.I. 02878  
PH: 401-624-2174

M EI	Octagon water set 7 piece	\$175.00
M EI	Tiger Lily water set 7 piece	175.00
M EI	Imperial Grape water set 7 piece	175.00
M EI	Maple Leaf water set 7 piece	175.00
M EI	Lattice & Grape water set 6 piece	175.00
M EI	474 punch bowl 8 piece	125.00
A EI	Pansy Spray bowl	25.00
A EI	Wreath of Cherry large berry bowl	125.00
PO EI	Fan occasional piece	40.00
B EI	Grape & Gothic Arches creamer	40.00

\*\*\*\*\*

FOR SALE

A.C. Dickey, 144 Chandler St., Vacaville, Ca., 95688  
PH: 707-448-9386

LM	heavy Iris pitcher	\$250.00
M GI	Raspberry water set 7 piece	200.00
M GI	Imperial G/C water set 7 piece	200.00
M GI	Butterfly & Fern water set 7 piece	400.00
P GI	Acorn Burr water set 7 piece	750.00

\*\*\*\*\*

Pat Call, 34 Lovell Road, Stratham, N.H. 03885  
PH: 603-778-0660

P EI	Many Fruits punch bowl base	\$150.00
AMBEI	Luster Rose 4 piece table set	225.00
A EI	G/C Fernery, chip on cable at bottomsell or trade	795.00
M EI	G/C canelamp	500.00
M EI	G/C Tobacco Jar, normal minor rough inside lid	215.00
IG EI	G/C large ice cream bowl, ¼" internal crack bottom	295.00
W LI	(N) Peacock & Urn small ice cream dishes 3 each	29.00

Send SASE for list of more carnival

\*\*\*\*\*

Jack D. Wilson, 4148 N. Springfield, Chicago, Ill. 60616  
PH: 312-583-7339

IB EI	Brooklyn tumbler (Owens # 11) scarce	\$25.00
M EI	Robin mug	30.00
A EI	boutinierre compote, radium finish	65.00
S GI	Unlisted Star Medallion goblet or celery	25.00
M EI	Moon Prints breakfast creamer	25.00
M GI	Nesting Swan bowl	135.00
M EI	Millersburg Cherry large ice cream bowl	75.00
R EI	Colonial tumbler	325.00
M EI	Roses & Ruffles lamp base (very minor check)	150.00
G GI	Sunflower pin tray (chips)	35.00

\*\*\*\*\*

FOR SALE

Sterling Butz, 221 N. Adams, Allentown, Pa. 18104

M EI	Floral & Grape tumbler	\$10.00
G EI	Trout & Fly bowl	170.00
M EI	G/C hand grip plate	40.00
B EI	(N) Basket	60.00
A EI	Fine Cut & Roses rosebowl	95.00
A EI	Millersburg Diamond tumbler	35.00
B EI	Singing Birds mug	60.00
G EI	G/C plate	70.00
A EI	G/C plate	70.00
G EI	Imperial Grape cup & saucer	50.00

\*\*\*\*\*

Beverly Tuthill, Box 203, Lee Center, N.Y. 13363

PH: 315-337-9118

M EI	G/C open compote	\$325.00
M EI	Imperial Grape decantur	50.00
A EI	Fine Cut & Roses candy dish	30.00
M EI	Pineapple bowl 6½"	45.00
M EI	Shell & Jewel sugar with lid	30.00

\*\*\*\*\*

Betty E. Bryner, 30 S.W. 64th Court, Miami, Fla. 33144

PH: 305-261-7029

B GI	Kittens spooner	\$110.00
M EI	Wreath of Roses stemmed bon-bon	37.50
W EI	Daisy & Drape vase	90.00
M EI	Flowering Dill hat	26.00
W EI	Persian Garden 11½" ice cream bowl	165.00
G EI	Holly Sprig 2 handled flat nappy	47.50
S EI	Soda Gold tumblers 3	each 40.00
A EI	Peacock on the Fence bowl 8 3/4"	90.00
A GI	Peacock & Urn 5½" bowl 2	each 35.00
M EI	Wild Rose nut dish (N)	35.00

\*\*\*\*\*

FOR SALE

Norma Morrison, 3912 Pennsylvania Ave., Eureka, Ca. 95501

PH: 707-443-1319

A EI	(N) Butterfly bon-bon	\$50.00
B EI	Cherry Circles large bon-bon	50.00
LM PI	Illinois Daisy covered jar (English)	30.00
M EI	Vintage Banded mug	22.00
B EI	Orange Tree mug	28.00
IG GI	(N) Acorn Burrs punch base & 2 cups, flake on top of punch base	150.00
CL EI	Frosted Block plate, two tiny flakes on rim	20.00
A EI	Millersturg Ribbons and Rays bowl, reg finish	35.00

\*\*\*\*\*

Dick Hatscher, Route 1, Box 261, Walnut Hill Rd. Bethel, Conn. 06801

PH: 203-743-1468

M EI	Pastel Millersburg Diamond water pitcher	\$120.00
M GI	Lattice & Grape tankard pitcher	128.00
M EI	9 5/8" Strawberry Intaglio bowl	45.00
M EI	2 Springtime tumblers (2)	each 28.00
M LI	Greek Key plate	110.00
G LI	Millersburg Cosmos dish	28.00
A EI	Millersburg Little Stars bowl	64.00
W EI	Wreathed Cherry berry sauces (3)	each 32.00
CL EI	7 pc Cosmos & Cane berry set, 1 sauce has base chip	158.00
AO EI	2 Daisy & Drape vases	each 225.00

\*\*\*\*\*

Frances Gannon, 8743 Branton, Highland, Ind. 46322

PH: 219-923-8134

W EI	(N) Peacock & Urn large ice cream bowl	\$160.00
W EI	Rose Show bowl, small rim chip	135.00
P EI	(N) G/C 7 piece water set	375.00
P EI	(N) G/C small berry bowl	20.00
P EI	(N) G/C tumbler	20.00
G LI	(N) G/C water pitcher	240.00
P EI	(N) Oriental Poppy tumbler	39.00
DM EI	Grapevine & Lattice tumbler	25.00
DM EI	Vineyard tumbler, rough base	10.00
PM EI	Grape Arbor tumbler	25.00



WANTS

Beverly Tuthill, Box 203, Lee Center, N.Y. 13363  
PH: 315-337-9118

- P Many Fruits punch bowl base
- P Strawberry epergne lily
- P Fishnet epergne base
- W Orange Tree punch bowl base
- M Maple Leaf creamer

\*\*\*\*\*

Jack D. Wilson, 4148 N. Springfield, Chicago, Ill. 60618'  
PH: 312-583-7339

- M Hobnail spooner
- G Hobnail Swirl rosebowl or spitton
- G Hobnail rosebowl
- Any Blue or Vaseline Millersburg pieces
- Trout & Fly or Big Fish
- Any Millersburg flat plates
- G Base for Hobstar & Feather punch set
- Rare Millersburg tumblers
- Any Millersburg whimsys
- Ohio Star vases

\*\*\*\*\*

Tracey Corley, P.O. Box 1432, Orange, Texas 77630

One Marigold ribbed tumbler for tumble-up. Ribs inside of tumbler with etchings of rosettes and beading on outside of tumbler.

\*\*\*\*\*

WANTS

A.C. Dickey, 144 Chandler St., Vacaville, Ca. 95688  
PH: 707-448-9386

- W Orange Tree Scroll tumbler
- W Orange Tree Orchard tumbler
- W Raspberry tumbler
- IG Raspberry tumbler
- W Apple Tree tumbler
- IB Dandelion (N) tumbler
- W Butterfly & Fern tumbler

\*\*\*\*\*

Ray Heath, P.O. Box 1009, Bonners Ferry, Idaho, 83805  
PH: 208-267-5376

Any color Formal hatpin holder as shown in Edwards Rarities in Carnival Glass, page 37.



On the 32nd day of the 13th month of the 8th day of the week,  
On the 25th hour and the 61st minute, we'll find all that we seek.

## FASCINATING FACTS

The buttons on the back of a dress coat once served a purpose other than decoration. In seventeenth and eighteenth century Europe, the skirts of such coats were very long and the tails flapped about interfering with movement. An ingenious gentleman had buttons sewn on the back so that when the wearer was in a hurry he could simply button up his skirts.

\*\*\*\*\*

A car operates at maximum economy, gas-wise, at speeds between 25 and 35 miles per hour. A car that shifts manually gets 2 miles more per gallon of gas than a car with automatic shift. A car uses 1.6 ounces of gas idling for one minute. Half an ounce is used to start the average automobile.

\*\*\*\*\*

Slapstick comedy is named after an actual slapping stick. The stick, which came to be equated with broad farce in the sixteenth century as part of the Italian *comedia dell'arte*, was used by the comic hero Harlequin to whack the rumps of artless stooges. It was made of two pieces of wood joined together to make a slapping sound when it hit.

\*\*\*\*\*

In the year 632, when the prophet Muhammad died, the Islamic empire comprised only an insignificant corner of Arabia. A little more than a hundred years later the Moslem religion had spread to Persia, Egypt, Syria, India, Central Asia, parts of northern Africa, and into southern Africa. In a century's time Islam had converted one-third of the world.

\*\*\*\*\*