

H. O. A. C. G. A.
GEORGE O. MCGREW JR.
BULLETIN SECRETARY
6800 WOODWARD
OVERLAND PARK, KANSAS 66204
913-262-8822

JUNE 1980

MON	TUE	WED	THUR	FRI	SAT	SUN
1	2	3	4	5	6	7
8	9	10	11	12	13	14
15	16	17	18	19	20	21
22	23	24	25	26	27	28
29	30					





Heart of America
Carnival Glass Association, Inc.

MEMBERSHIP JUNE TO JUNE
\$10.00 PER COUPLE OR SINGLE

PUBLISHED 15th OF
EACH MONTH

PRESIDENT:

COOLEY MILLER
7605 N.W. EASTSIDE DRIVE
KANSAS CITY, MISSOURI 64152
816-741-4635

VICE-PRESIDENT:

GEORGE BOLLES
5204 CATALINA
SHAWNEE MISSION, KANSAS 66205
913-432-5438

TREASURER:

CORA KILGORE
4928 NEOSHO
SHAWNEE MISSION, KANSAS 66205
913-236-4546

SECRETARY:

LUCILE BRITT
3048 TAMARAK DRIVE
MANHATTAN, KANSAS 66502
913-539-1933

BULLETIN SECRETARY:

GEORGE O. MCGREW
6800 WOODWARD
OVERLAND PARK, KANSAS 66204
913-262-8822

Joe and Anita Haltom got the other ice blue opal for \$250.00. Flo Cunningham the red one for \$105.00. The 17 frosty white sold from \$80.00 to \$140.00. They sold for a total of \$3425.00. Our total whimsey sale was \$5445.00.

We want to thank John Woody and Leonard Augustine for a job well done. Turday evening was the fun night. We had a delicious chuck wagon dinner, served by Sadie Treff and her helpers. Lonnie Harper and his band played during dinner and then for the evening of dancing.

Sunday morning came early since we had to set our watches ahead one hour for Daylight Savings Time, but most everyone made it for breakfast which was delicious. We had 170 stay for breakfast. Now came the hard part saying good-bye to all our old friends and to our new found friends. God willing we will all meet again next year for another HOACGA convention.

Lucile Britt
Secretary

* * * * *



THE LUSTRE ROSE TUMBLER AND ITS DISTINCT VARIENT



LUSTRE ROSE

LUSTRE ROSE VARIENT

While many Carnival glass collectors might not realize this, there is considerable difference between the "Lustre Rose" tumbler and its twin sister pattern the "Lustre Rose Varient". To my knowledge, until Mr. Richard Owens came out with his popular Carnival glass tumbler book, this variant tumbler had been previously unlisted. The regular "Lustre Rose" shown above on the left, contains thirty seven ribs on the inside of the tumbler. If you will notice closely in the above picture, you can see the numerous ribs on the inside of the "Lustre Rose" tumbler. The "Lustre Rose Varient" on the other hand is entirely smooth on the inside. Also the regular "Lustre Rose" tumbler has a 24 point star pressed into the bottom of its base. The variant, on the other hand, is perfectly smooth on the bottom of its base with no star whatsoever. Generally speaking, both these tumblers will vary as to the amount of flare, but they both flare out more at the top than most other Carnival glass tumblers. The "Lustre Rose Varient" is not near as common as the regular "Lustre Rose" tumbler. For some reason the variants that I have seen were all in the pastel colors. Even though they might exist, I have never seen any in the dark marigold, helios green, purple, or amber.

MILLERSBURG PIPE HUMIDOR



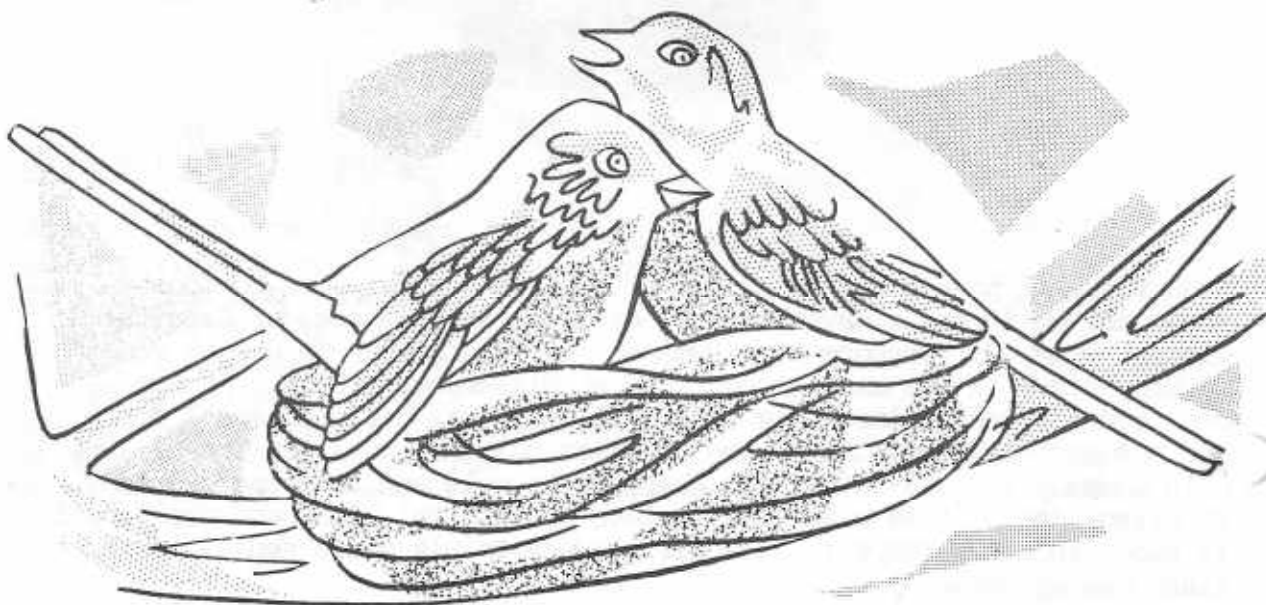
Even though I have never owned one of these beautiful pipe humidors shown above, it has always been one of my favorite pieces of Carnival glass. This "Millersburg Pipe Humidor" is outstanding in design and workmanship. It was made around 1910 at Millersburg, Ohio. It has been some 70 years since this beautiful piece was designed and I don't see how anybody could improve on it after all these years. The Hopkins Mold Company is said to be the maker of the mold and they too did an excellent job. It is a fantastic piece of Carnival glass and the detail is super in every respect. The designer certainly was a genius in the glass making world.

I have never understood why more of these were not made. One would think that they certainly would have sold very well. But instead, they are definately rare and one seldom comes up for sale. These pieces are about 8" tall and 5" across the top. The one shown above is in the amethyst color. At the time the above picture was taken it was part of the Thad and Betty Klutts collection of Oklahoma City. I know of another amethyst humidor in the state of Florida. In addition to amethyst they were also made in marigold and green. A picture of one of these humidors is on the cover of Bill Edward's fine Millersburg Glass book.

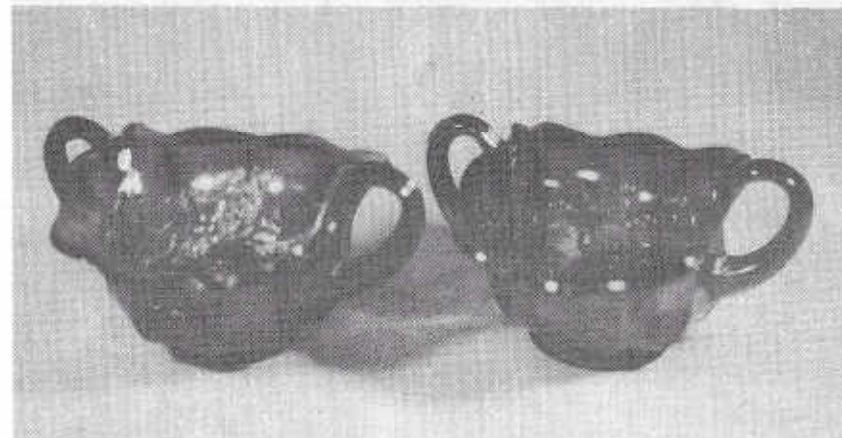
There is a great deal of similarity between this pipe humidor and the pretty White Oak tumbler. At the present time however, nothing has been found to prove that the White Oak tumbler was made by Millersburg Company. At this time we just can't say for sure who did make the White Oak tumbler. We hope that further research sometime in the future will answer this question for all of us.

The famous Grape & Cable (Northwood Grape) humidor, while not overly plentiful, is much easier to find than the pipe humidor that we feature here. Don't hesitate to buy it however because it is certainly a fine piece of Carnival glass.

Pictorial Pattern Parade
by John & Lucile Britt



Carnival Cameos by Don Moore



HOLLY SPRIG AND NIGHT STARS BON-BONS

Only the interiors of these pieces are different. Molds are expensive, so by using the exterior or bottom portion of a mold for more than one pattern, the cost of production was reduced substantially.

The two pieces shown here are Millersburg. The Holly Sprig (or Whirl), shown on the left, is quite common and can also be found in bowls of various sizes and a nappy. It was made in green, marigold and amethyst. The Night Stars, on the right, is rare. I'm sure we will never know why so few of these were made, while the Holly Sprig pieces are quite easily found. The Night Stars was also made in a two-handled card tray, which is the bon-bon flattened out at the ends. This pattern is found in amethyst and green. A bon-bon in green sold for \$275 at the Strasburger auction in October of 1979.



ON THE ENGLISH CARNIVAL SCENE

Just recently I went to a giant antiques fair, which consisted of over 400 stalls, some inside under cover but the majority outside. This giant fair was held on the Ardingly Show Grounds, where some of our big horse show events take place each year. Ardingly is a small village in the middle of Sussex. A lot of the dealers sell their goods from the back of their cars and it was from one of these dealers that I got a big surprise. I just couldn't believe my eyes, when I saw right in front of me, the most beautiful marigold Carnival glass "Covered Swan" in all its glory and offered at a very reasonable price too. Of course I didn't hesitate and carried it home like a swan with two necks.

It is exactly as described in Marion Hartung's Book 6 page 133. The base is 7 3/4" long and 5 1/2" wide, and the Swan top is 7 1/2" long and 4" high. The complete piece stands at 5 3/8" in height. The quality of the glass is excellent and the marigold a good, rich color, particular on the base. The pearly iridescence is exceptionally nice. The neck of the swan is a work of art in itself, so graceful. I am really proud to have this in my collection and already it is one of my favourite pieces.

FOR SALE

Pat Call, 34 Lovell Road, Stratham, N.H. 03885
PH: 603-778-0660

G EI	G/C breakfast set	\$100.00
P EI	Heavy Grape chop plate, grapes bruised	175.00
P EI	Singing Birds tumbler	35.00
PEARL	Lacy Dewdrop ped. cake plate, irid. milk glass	175.00
M GI	10" Blackberry Wreath bowl, Millersburg	38.00
B PI	Pastel Swan	15.00
G EI	Millersburg Cherries spooner, hairline in handle	22.00
DM EI	Butterfly & Berry tumblers (6)	110.00
P EI	Imperial Grape water bottle	125.00
G GI	12 sided Three Fruits plate, couple tiny scratches	80.00

Georgia Martin, 5650 W. Indian Trail, Louisville, Ky., 40214
PH: 502-366-8660

M EI	Banana bowl	\$110.00
M EI	Grape Delight rosebowl turned in	45.00
M	Ship & Stars plate	25.00
M EI	Floral & Grape tumblers	each 16.00
W EI	Northwood basket (N)	90.00
CB EI	Northwood basket	65.00
M EI	Powder Jar and Top	each 40.00
M EI	Singing Bird mug	45.00
CB EI	Small Orange Tree mug	35.00
CB EI	Large Orange Tree mug	40.00

A smile cannot be bought, begged, borrowed, or stolen, for it is something that is no good to anyone until it is given away.

WANTS

Ruth Schinestuhl, 55 Natalie Terr., Absecon, N.J. 08201
PH: 609-641-1814

G EI Embroidered Mums
W EI Embroidered Mums

John Stewart, 99 Aster Circle, Weymouth, Mass., 02188
PH: 617-337-1304

B Dandelion mug
BO Dandelion mug
IB Knights Templar mug
P Fine Cut & Roses rosebowl with inside pattern
IB Northwood basket
P Northwood basket
A Northwood basket
M Wishbone epergne
B Wishbone epergne

Betty Klutts, 3800 N.W. 24th, Oklahoma City, Ok. 73107
PH: 405-946-7497

G Double Star tumblers
G Greek Key pin tray

Dennis Sutton, 8356 Carter, Overland Park, Kansas 66212
PH: 913-649-6877

Any color Tornado vase

WANTS

B.L. Hill, P.O. Box 1687, Greensboro, N.C., 27402
PH: Day 919-294-4972, Night 919-342-3096

M or B Carnival Glass chandler or Chandler shades

Vernelle Mock, S. Hiway 75, Sabetha, Kansas 66534
PH: 913-284-3027

DP Northwood Sweetmeat compote, pagoda lid
M Cover for Vintage powder jar

Mrs. F.M. Whitley, 1041 Cheshire Lane, Houston, Texas 77018
PH: 713-681-0807

TUMBLERS

EnamelEd Windflower
Forty-Niner
Tiny Hobnail-Owens #95
Satin Jewels-Owens #100
(N) Inverted Coin Dot Variient-Owens #102
Smooth Panels-Owens #153
Sword and Circle-Owens #168
Fenton's Ribs-Owens #205
Banded Diamonds-Owens #204

Robert V. Larsen, 3214 19th St., Columbus, Neb. 68601
PH: 402-564-2304

W HOACGA 1980 hatpin holder souvenir, that was sold at the auction.
Will pay top price.

WANTS

Dick King, 925 22nd Ave., Vero Beach, Fla. 32960
PH: 305-562-6651

M Stopper for Imperial Grape wine decantur

Media Conyers, 4304 E. Race, Jonesboro, Ark. 72401

R HOACGA souvenir Corn Vase, Hatpin Holder, & water set.

Mrs. Lydia Caudle, Box 87, State Road, N.C. 28676
PH: 919-874-2519

Any color Oriental Poppy pitcher
Blue base for Wreath of Roses punch bowl
Marigold Imperial Grape pitcher
Purple G/C pitcher
Any old Carnival glass wines
Purple G/C candlestick
Green or purple Loving Cup
Whit or Green (N) Dandelion tumblers
Any ice blue or aqua opal Carnival glass

Omer E. Sweeney, 28 Esmond St., Esmond, R.I. 02917
PH: 401-231-4108

M Bottom to G/C sugar
M Top to Butterfly & Berry butterdish
P Top to G/C covered compote
P Top to vintage powder jar

44

FOR SALE

Johmie B. Ball, 1304 S. 9th St., Ponca City, Okla. 74601
PH: 405-765-8789

IG	GI	Poppy Show bowl, 9" scalloped	\$225.00
M	GI	9" Trout & Fly bowl	100.00
M	EI	Kangaroo bowl 9½"	125.00
P	EI	Acorn Burr berry set 7 piece	250.00
P	EI	G/C table setting	500.00
P	EI	Heavy Grape water jug	130.00

Sterling Butz, 221 N. Adams St., Allentown, Pa. 18104

P	EI	Imperial Grape pitcher, small chip top of handle	\$80.00
M	EI	Persian Medallion rosebowl square or round openings	50.00
A	EI	Wreath of Roses rosebowl	60.00
A	EI	Wreathed Cherry berry bowls	each 30.00
M	EI	Little Fishes berry bowls	each 35.00
G	EI	Imperial Grape punch bowl	60.00
G	EI	Imperial Grape punch cups	each 15.00
M	EI	Kittens cereal bowl chip on top	35.00

Charles A. Adams, 2211 Sunset Blvd., Los Angeles, Ca., 90026
PH: 213-483-775 or 213-384-5001-

P	EI	Imperial Grape goblet	\$55.00
LM	EI	Estate mug	80.00
W	EI	Leaf Chain 8" flat round bowl	65.00
M	EI	Brooklyn Bridge bowl, no harm flake	200.00
PM	EI	G/C bon-bon stippled, basketweave exterior	30.00
AQ	EI	G/C, Fenton, flat 7½" bowl. not opal	95.00
P	EI	Beaded Shell mug	75.00
CB	EI	Orange Tree mug-straight sides	50.00
G	EI	Stippled Rays 10" bowl, ruffled, square	60.00

Send SASE for new list of old Carnival glass for sale

35

FOR SALE

Linda Halfacre, 1618 McKinley, Beloit, Wi. 53511
PH: 608-362-6109

M EI	Leaf & Beads candy dish, double pattern	\$30.00
A EI	" " " " " "	50.00
M EI	Drapery vase (N)	22.00
A EI	Double Stem Rose bowl small nick	28.00
M EI	Grapevine Lattice tumbler, small nick rare	35.00
M EI	Floral & Grape tumbler, small base chip	18.00
M EI	Apple Blossom bowl 6½"	18.00
G EI	Coin Dot bowl, cady ribbon edge	30.00
AB EI	Windmill milk pitcher	90.00
S EI	Windmill milk pitcher	90.00

A.C. Dickey, 144 Chandler St., Vacaville, Ca., 95688
PH: 707-448-9386

M EI	Grape Arbor water set 7 piece	\$380.00
M EI	Rambler Rose water set 7 piece	275.00
M	Luster Fruit tumblers have 9	each 8.00
M EI	Bouquet water set 7 piece	470.00
B EI	Floral & Grape water set 7 piece	470.00

Ruth Schinestuhl, 55 Natalie Terr, Absecon, N.J. 08201
PH: 609-641-1814 evenings

BO EI	Daisy Wreath bowl	\$180.00
AO EI	Peacock on the Fence bowl, small spider	275.00
IG EI	Northwood basket	110.00
W EI	Northood basket, octagonal	100.00
P EI	Embroidered Mums bowl	75.00
M EI	6' Pinecone plate	25.00
VAS EI	Small 3 ftd Lotus & Poinsettia	125.00
M EI	Horse Medallion 3 ftd nut bowl	65.00
M EI	Peacock at the Fountain butter top, flakes	40.00

FOR SALE

Dick Wetherbee, P.O. Box 175A, Rochdale, Ma. 01542
PH: 617-892-4420 after 7PM EST

G EI	Millersburg Seaweed 10" bowl, edge & base chips	\$28.00
M EI	Oval Cherry Wreath banana boat & 1 sauce dish	67.00
P EI	(N) G/C 9" bowl, Lavender, small nick at one point	38.00
CB EI	Windflower 9" bowl	65.00
B EI	Persian Medallion 8½" bowl, very tiny rim flake	38.00
P EI	(N) Nippon 9" bowl, pigeon blood red	48.00
M EI	G/C spatula ftd 9" plate, no harm chip on inside ft	38.00
G EI	(N) Fine Rib vase 6 3/4" high, 2 tiny base nicks	15.00
M EI	(N) Three Fruits 9" bowl, cherries in the center	32.00
G GI	(N) Tree Trunk vase 10" high	18.00

Mrs. Lydia Caudle, Box 87, State Road, N.C. 28676
PH: 919-874-2519

P EI	Millersburg Nesting Swan bowl	\$249.00
G EI	Singing Bird water set 7 piece	545.00
M EI	Jewel Heart tumbler	75.00
P EI	Raspberry milk pitcher	145.00
M EI	Collar base Horsehead bowl	49.00
B EI	Jack in pulpit shape Horsehead bowl	95.00
B EI	Captive Rose plate	120.00
P EI	G/C breakfast sugar and creamer	139.00

Helen Nadeau, 18 Thomas Olney Common, Providence, R.I. 02904
PH: 401-521-4581

M EI	Sailboats 6" bowl	\$24.00
M EI	Dragon & Lotus 9" bowl	35.00
M EI	Leaf & Beads rose bowl ftd interior (N)	50.00
G EI	Sunflower 8½" bowl, ftd (N)	50.00
G EI	Leaf & Beads candy bowl ftd (N)	50.00
G EI	Grape Leaves 8½" bowl	60.00
P EI	Rib & Panel vase 7" (N)	25.00
P EI	Holly Sprig (whirl) 7½" bowl, Millersburg	55.00
P EI	Peacock & Urn 5½" bowl, collarbase	40.00
W EI	G/C punch cup (N)	60.00

FOR SALE

Frances Gannon, 8743 Branton, Highland, Ind. 46322
PH: 219-923-8134

G EI	G/C (N) water pitcher	\$240.00
M EI	Floral & Grape 7 piece water set, flake on pitcher 2 tumblers chipped	150.00
M EI	Panther small berry bowls, straight sides, vary in color each	25.00
M EI	Star Medallion milk pitcher	25.00
AQ EI	Windmill milk pitcher	150.00
M EI	Wide Panel chop plate 14"	30.00
P EI	Inverted Thistle spooner, base chip, NEAR CUT	45.00
M EI	Lattice & Grape 7 piece water set	150.00

Omer E. Sweeney, 28 Esmond St. Esmond, R.I. 02917
PH: 401-231-4108

M	Smooth Rib 9" & 6" bowls, 2 for	\$20.00
M	Flute Wide Panel or Colonial 8" bowl (N)	20.00
M	Memphis 4" bowls 2 for	15.00
G	Compote, green stem, sliver green inside (N)	15.00
AM	Compote, smooth rib, green stem (N)	20.00
M	Compote, plain interior, basketweave exterior (N)	20.00
M	G/C cookie jar, repaired (N)	75.00
W	G/C ice cream bowl 11" (N)	150.00
B	Wreath of Roses compote (N)	20.00
G	Leaf & Beads dome footed bowl 7"	35.00

WANTS

Lola Close, 9610 Hendon Lane, Houston, Texas, 77036
PH: 713-981-1180

W	Blackberry Spray Hat
IG	" " "
IB	" " "
G	" " "
B	" " "
P	" " "
S	Multi-Fruits & Flowers punch bowl only

Melvin Ruser, 351 E. Memorial Road, Walcott, Ia., 52773

G Stopper for cologne bottle cambridge



FASCINATING FACTS

Twenty minutes before the pain of a migraine headache begins, many sufferers experience a phenomenon called the aura. During this time the sufferer may see intense colors, flashing lights, even monsters and apparitions. Lewis Carroll, a migraine victim most of his life is supposed to have taken some of his characters for Alice in Wonderland from the apparitions he saw before attacks.

* * * * *

The Tasaday tribe recently discovered in the Philippine Islands has no known enemies, no weapons of war, nor words in their language for hate, war or dislike. They neither hunt or cultivate.

* * * * *

Samuel Taylor Coleridge wrote his famous poem "Kubla Khan" directly from a dream. Coleridge was in the midst of writing the visions he had seen in this dream when someone knocked on the door and he rose to let him in. On returning to his work, Coleridge found that he could not remember the rest of the dream. That is why "Kuba Khan" remains unfinished.

* * * * *

Alfred Lord Tennyson wrote a 6,000 word epic poem when he was only twelve years old.

* * * * *

The word "Mikado" did not refer to the Japanese emperor himself but to the door of his royal chamber. In medieval Japan it was considered in bad taste to speak of this great personage directly, so instead his existence was inferred by referring to the entrance to his place of residence.