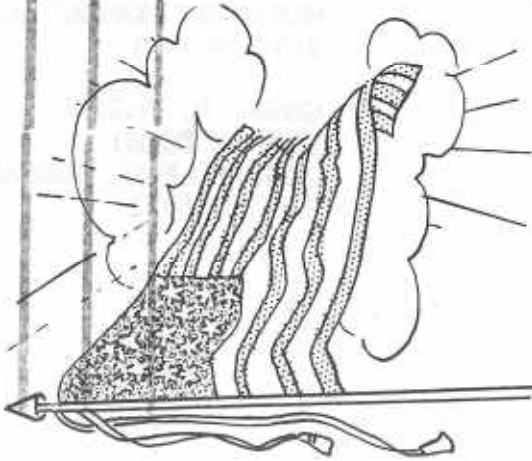


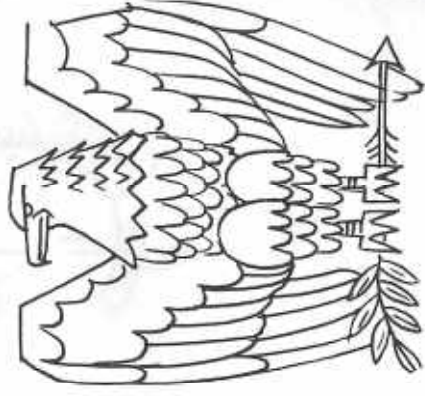
H.O.A.C.G.A.  
GEORGE O. MCGREW JR.  
BULLETIN SECRETARY  
6800 WOODWARD  
OVERLAND PARK, KANSAS 66204  
913-262-8822



FIRST CLASS



JULY 1980						
SAT	SUN	MON	TUE	WED	THU	FRI
		1	2	3	4	5
6	7	8	9	10	11	12
13	14	15	16	17	18	19
20	21	22	23	24	25	26
27	28	29	30	31		





Heart of America  
Carnival Glass Association, INC.

MEMBERSHIP JUNE TO JUNE  
\$10.00 PER COUPLE OR SINGLE

PUBLISHED 15th OF  
EACH MONTH

PRESIDENT:

COOLEY MILLER  
7605 N.W. EASTSIDE DRIVE  
KANSAS CITY, MISSOURI 64152  
816-741-4635

VICE-PRESIDENT:

GEORGE BOLLES  
5204 CATALINA  
SHAWNEE MISSION, KANSAS 66205  
913-432-5438

TREASURER:

CORA KILGORE  
4928 NEOSHO  
SHAWNEE MISSION, KANSAS 66205  
913-236-4546

SECRETARY:

LUCILE BRITT  
3048 TAMARAK DRIVE  
MANHATTAN, KANSAS 66502  
913-539-1933

BULLETIN SECRETARY:

GEORGE O. MCGREW  
6800 WOODWARD  
OVERLAND PARK, KANSAS 66204  
913-262-8822

MINUTES OF THE JUNE MEETING

The President Cooley Miller called the June meeting to order at 2:40 P.M. at the home of Duane & Ardyth Spry. We all enjoyed a pot luck picnic in their yard before the meeting. There were 40 at the meeting including some of our new members. Hope they can keep coming.

Being the minutes were in the bulletin we dispensed with the reading of the minutes.

Cora Kilgore gave the treasurer's report of May and June. Balance on hand March 31, 1980, \$15,326.54, deposits for April and May \$18,345.02, Expenses for April and May \$21,774.28, Balance on hand May 25, 1980, \$11,897.80. June expenses \$1,110.98, June income \$1620.00, balance June 20, 1980 \$12,085.91. The treasurer also reported we have sold 418 souvenirs.

President Cooley Miller appointed Herb and Sadie Treff as convention Chairmen again, with Frank Ronk helping and others to be added later.

A discussion was held on how we could lower the cost of the bulletin. Last year the bulletin cost was \$5,119.43 and postage was \$3,476.09. Marge Miller made the motion that we cut down on the news letters from the other clubs. Ardyth Spry seconded the motion. It carried.

The meeting was then adjourned.

Lucile Britt, Secretary

Cooley Miller, President

\*\*\*\*\*



THE LUSTRE ROSE TUMBLER AND ITS DISTINCT VARIANT

(This article is being ran again as it was left out of some of the June bulletins.)



LUSTRE ROSE

LUSTRE ROSE VARIANT

While many Carnival glass collectors might not realize this, there is considerable difference between the "Lustre Rose" tumbler and its twin sister pattern the "lustre Rose Variant". To my knowledge, until Mr. Richard Owens came out with his popular Carnival glass tumbler book, this variant tumbler had been previously unlisted. The regular "Lustre Rose" shown above on the left, contains thirty seven ribs on the inside of the tumbler. If you will notice closely in the above picture, you can see the numerous ribs on the inside of the "Lustre Rose" tumbler. The "Lustre Rose Variant" on the other hand is entirely smooth on the inside. Also the regular "Lustre Rose" tumbler has a 24 point star pressed into the bottom of its base. The variant, on the other hand, is perfectly smooth on the bottom of its base with no star whatsoever. Generally speaking, both these tumblers will vary as to the amount of flare, but they both flare out more at the top than most other Carnival glass tumblers. The "lustre Rose Variant" is not near as common as the regular "Lustre Rose" tumbler. For some reason the variants that I have seen were all in the pastel colors. Even though they might exist, I have never seen any in the dark marigold, helios green, purple, or amber.

The two tumblers in the above photograph have some other unusual characteristics in which I would like to point out. The "Lustre Rose Variant" on the right is in the white base color. This one is very rare indeed and is one of our most prized tumblers. White pieces of old Carnival glass made by Imperial are very hard to find. We also have an octagon wine in the frosty white color. This too was made by Imperial and is the only one we have seen. We have the variant tumbler in white, aqua, pastel marigold, and clambroth. Note that these are all in the pastel colors. There are no reproductions of the variant tumblers which of course does make it somewhat more desirable to a good many collectors. The reproductions have the inside ribbing and the star pressed into the bottom of its base like the old "Lustre Rose" tumblers. The new tumblers in which I have seen have an I superimposed over a G and pressed into the inside of its bottom. The new tumblers are also somewhat heavier in weight.

The unusual "Lustre Rose" tumbler shown above on the left is in the marigold color with the flowers painted red and the leaves in green. The iridescence has been applied over the coloring and makes for a very beautiful tumbler in display. We think this must have been an experimental tumbler and probably very few were ever produced. This example is the only one that I have ever seen. It came from the Preznick museum auction at Louisville, Ky. a number of years ago. While the regular "Lustre Rose" tumblers can be found in a wide variety of shades the two colors that deserve particular emphasis and are very hard to find are the true dark amber and smoke color. We are very proud of these rare colored tumblers and they hold a special place in our tumbler collection. These amber "Lustre Rose" tumblers are of the same rich color that Imperial used in making their fine amber Nu-Art plates and their beautiful amber Loganberry vases. The smoke colored tumblers are very similar in color to the more common Fashion and Soda Gold smokey colored tumblers. While we know that Fenton made more of the red Carnival glass than anyone else and Northwood was certainly the King of the Aqua-Opal Carnival glass, Imperial was the foremost producer of both amber and smoke colored Carnival glass pieces.

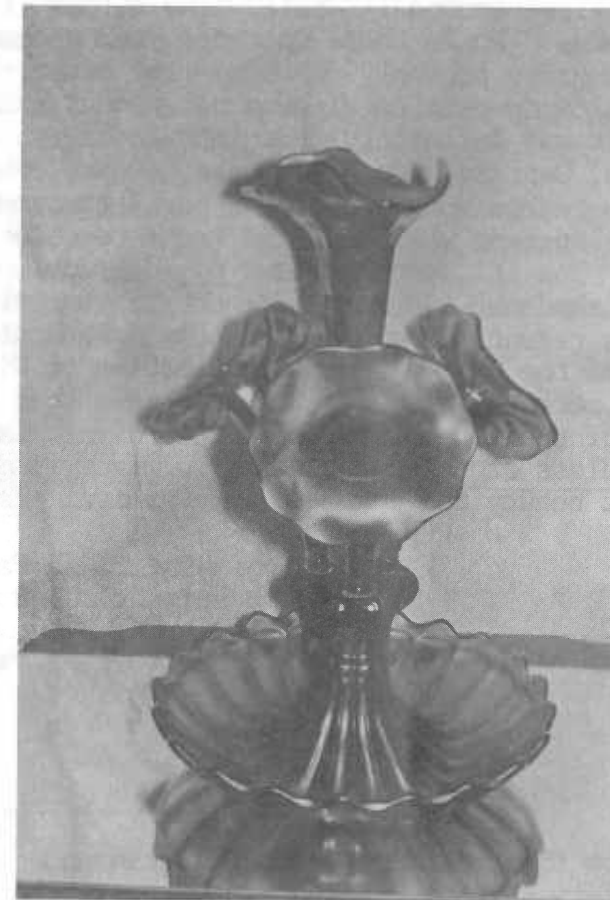
I might also point out here that "Lustre Rose" is not the only pattern that has tumblers containing both the plain and ribbed interior designs. Another popular Imperial tumbler called Imperial Grape, can be found both with smooth and ribbed interiors. Other tumblers that come to mind with both these variations are three Northwood patterns, Grape Arbor, Dandelion, and Oriental Poppy.



In conclusion I will repeat again that the "Lustre Rose" tumbler is very common in marigold and does not cause much excitement among tumbler collectors when found. However let's think for a few minutes of all the above mentioned colors in this pattern where the tumblers are really hard to find. For instance, it would be extremely hard for you to piece together a complete "Lustre Rose" water set in the true amber color. It actually would be much easier for you to find a purple Diamond Lace, Grape & Cable or Peacock at the Fountain water set than it would be for you to find a complete set of a purple "Lustre Rose". I also don't want you to think that I am degrading the color of marigold in this article. I think it is a beautiful color, but I am merely pointing out here that in some patterns such as "Lustre Rose" it is very common in marigold. In some cases the exact opposite is true. For instance, how many marigold Northwood Peach tumblers do you know of? I can think of only two that I have seen. I have also heard of very few marigold Diamond Lace tumblers while many of these were made in the purple color. The Millersburg pattern tumblers of Gay Nineties, Perfecton and Morning Glory are harder to find in marigold than their amethyst counterparts. The Cambridge patterns of Inverted Thistle and Inverted Strawberry would also be included in this class where marigold is more rare than the purple. While Westmoreland's amethyst Checkerboard is certainly not easy to find, I know of only one tumbler in marigold. This is only a few examples. There are many more. There are also some of our truly fine tumblers that have been reported only in marigold. Some examples in this category are Northwood's Near Cut, White Oak, Oklahoma, Cut Cosmos, Ranger, Flute and Cane, Interior Poinsetta, Sweetheart, Drapery Variant, Heart Band and Northwood Cherries. There are many others that could be added to this list. So whether you collect tumblers or Carnival glass in general, don't overlook the marigold color. It is not only beautiful but in many cases it is downright rare and very desirable.

This is # 30 in this series on Carnival glass tumblers. Next month we will discuss a very popular Northwood tumbler called "Grape and Cable" or "Northwood Grape". This one too has many variations, no doubt more than any other Carnival glass tumbler.

John & Lucile Britt



WIDE PANEL EPERGNE

Shown above is another one of Northwood's super pieces of Carnival glass. It is called the "Wide Panel Epergne" (Hartung bk 7 pg 159). This beautiful piece contains the base, the tall center lily and three smaller side lilies. The only pattern shown on this piece is the so called wide panel design. Up underneath the base, this piece is sometimes signed with the famous Northwood trademark. Mrs. Hartung states in her book seven that this piece was shown advertised from a 1910 catalogue. It was offered from that particular catalogue only in green.



So from that old catalogue we can be sure that these fantastic pieces were made at around the 1910 date. This is a large piece, the base being about 10½" wide. The center lily is approximately 11½" high, the smaller side lilies around 7½" tall. The lilies flare out at their top to about 5½" wide. While these epergnes are not common in any color, the emerald green probably shows up more often. It can also be found in marigold and purple. I have never seen a complete set in cobalt blue, but it was definitely made in that color. The Curtis Knights of Atlanta, Georgia have a set that is part cobalt blue and part purple. In a recent Woody auction a partial set was sold in cobalt blue. This epergne was also made in pastel blue, pastel green and frosty white. The iridescence seems to show up especially well in these soft pastel shades. And last but certainly not least, one of these beauties has recently been found in the aqua opalescent color. It is now a part of the Harold Ludeman collection of Wisconsin. Mr. Cooley Miller who recently viewed this piece said that in his opinion it had to be one of the foremost pieces of Carnival glass that he has ever seen. Regardless of the color that you might find, these epergnes would add a lot of beauty and charm to any Carnival glass collection.

Pictorial Pattern Parade  
by John & Lucile Britt

\*\*\*\*\*

#### NOTICE

In order to save on the printing of the bulletin and quite possibly have a better quality of photographs we have again changed printers. We have returned our business to the Hawley Printing Company of Topeka, Kansas who did the bulletin a couple of years ago. Since the company is in Topeka the deadline for bulletin articles and ads will be moved back to the first of the month due to the distance from my residence. The master copies will be mailed to the printer and he will return the finished bulletins by Commercial carrier. There may be some delay in receiving your bulletins by a couple of days due to the shipping element but none is expected. So bear with us while we make this change to hold prices in check and furnish you with possibly a better bulletin.

George O. McGrew  
Bulletin Secretary

## *Carnival Cameos by Don Moore*



MOON PRINT - There has been much speculation as to the maker of this pattern. There is no proof it was made in this country. A small pedestaled creamer and a covered cheese dish would support the theory it is English in origin.

It can also be found in a vase, bowl, water pitcher, covered butter, banana boat, compote and covered jar. The two piece set, shown above, came as a surprise. It turned up at a flea market in England. It measures 12½" in diameter and stands 8" high. No cups have been seen, and I expect this is a two piece fruit bowl rather than a punch bowl and base. All pieces that I have seen in this pattern have been marigold.



Enclosed you will find the ten dollars for the 1980 dues. My husband and I don't mind the increase because we look forward to the bulletin every month. Always so much information. We've also purchased some very nice pieces through the bulletin ads.

Mary & Ray Russell  
Ft. Wayne, Ind.

\*\*\*\*\*

Received notebook containing punch sets and mugs. Enjoyed it along with your newsletter. Thank you for the very interesting articles.

Al & Nona Antczak  
Rochester, N.Y.

\*\*\*\*\*

Please find enclosed a check for \$10.00 to pay our dues for the 1980-1981 year. We love your bulletin and wouldn't be without it.

Mrs. Clay Buford  
Enid, Oklahoma

\*\*\*\*\*

I was dismayed to read of the death of Jay O'Donnell in February. Jay has been of great help in the past, sending me items of Carnival glass that are not available in Australia, writing interesting letters, and last but not least he joined me up with HOACGA and actually paid my membership. His generosity will always be remembered by me and his passing leaves a big gap in my circle of friends in the USA.

Sincerely  
Muriel Triplett, Australia

\*\*\*\*\*

We repeat the guide lines set up in years past for the benefit of the new members and as a reminder to all. Member families may advertise ten (10) FOR SALE and ten (10) WANT ads each month free of charge.

All advertisements, announcements, letters or any other item to be printed, must be received by the Bulletin Secretary by the 1st of the month to insure being published the month received.

1. In the absence of any chips or cracks being noted the piece will be considered perfect.
2. A 5 day return privilege at buyer's expense providing it is not as advertised.
3. All postage and insurance extra.
4. All for sale items must be priced - no bid items will be published.
5. The H.O.A.C.G.A. and paper do not accept any responsibility for items bought or sold thru this paper.
6. Marked Northwood pieces - please use (N).
7. Only OLD CARNIVAL GLASS items will be published.- The only new Carnival items accepted are the H.O.A.C.G.A. souvenir items.

For accuracy of description, the following is recommended:

A - Amethyst	PM - Pastel Marigold
P - Purple	R - Red
G - Green	C - Clear
B - Blue	IG - Ice Green
CB - Cobalt Blue	IB - Ice Blue
M - Marigold	AMB - Amber
PO - Peach Opalescent	S - Smoky
AO - Aqua Opalescent	W - White

EI - Excellent Iridescence	L - before color means light
GI - Good Iridescence	D - before color means dark

EXAMPLES: LM EI Brooklyn Bridge bowl	\$250.00
DP EI Good Luck bowl (N) small base chip	75.00

It would be appreciated if you will please use these codes suggested, it will be less confusing to everyone and also be helpful in the typing and set up of the bulletin.

THE FOLLOWING TWO PAGES OF ADS ARE BEING RERAN AS THEY WERE LEFT OUT OF THE JUNE ISSUE BY THE PRINTER IN SOME OF THE BULLETINS.

FOR SALE

FOR SALE

Lick Hatscher, Route 1, Box 261, Walnut Hill Rd, Bethel, CT 06801  
PH: 203-743-1468

M EI	G/C 7 piece whiskey decantur set	\$1200.00
PO EI	Rare 8½" 3 ftd, Louisa bowl	55.00
B EI	9" Captive Rose plate	79.00
B EI	6 piece Stippled Ray berry set, Scale Band Ext.	65.00
P EI	Farmyard bowl fluted	1750.00
G GI	Millersburg Cosmos dish	26.00
W GI	Hammered Bells (2)	each 40.00
W EI	Constellation compote	52.00
R EI	Colonial Stretch tumbler	325.00
R EI	Fenton basket, double open row	125.00

\*\*\*\*\*

Ian Harwood, 10302 121St. Edmonton, Alberta, Canada.  
PH: 403-488-9048

P EI	G/C 10½" punch bowl & base (N)	\$600.00
B EI	Embroidered Mums 8½" bowl	125.00
PO EI	Raindrops 8½" dome ftd bowl	95.00
P EI	Three Fruits stippled 9" plate	180.00
CL EI	G/C hand grip 9" plate (N)	160.00
P EI	Acorn Burr covered sugar, (N) small nicks on some hrs	135.00
P EI	Farmyard bowl candy ribbon edge 1½" interior crack in manufacturing	1250.00
P EI	Rose Show 9" bowl	200.00
AMB EI	Dragon & Lotus 8" bowl	150.00
M EI	G/C 9" footed plate	65.00

\*\*\*\*\*

Jos Mello, 535 Fish Road, Tiverton, R.I., 02878  
PH: 401-624-2174

LM EI	Butterfly & Berry tumblers (3)	each	\$22.00
M EI	Puzzle compote with wheat exterior		22.00
M EI	Orange Tree wine glasses stemmed (3)	each	28.00
M EI	Peacock & Grape bowl 8½"		25.00
M EI	Pansy Spray bowl 8½"		15.00
M EI	Fenton baskets, 1 side up, 1 down, 1 round	each	15.00
B EI	Blackberry miniature compote		40.00
B EI	Holly bowl 8½"		30.00
A EI	Wishbone bowl 8½" (N)		48.00
G EI	Singing Bird lg berry bowl, 3 small		125.00

\*\*\*\*\*

Ralph Simendinger, 1002 Maycliffe PL. Cincinnati, Ohio, 45230  
PH: 513-231-5381

A LI	Kingfisher 9½" bowl		\$85.00
A EI	Cobblestone bowl		65.00
A EI	Wishbone 3 footed bowl		65.00
A EI	Greek Key bowl, basketweave exterior		85.00
G EI	Thistle bowl		40.00
B EI	Peacock & Grape 9" bowl		50.00
P EI	Singing Bird mugs (N) (2)	each	70.00
P EI	Maple Leaf water set		425.00
IB EI	Peacock at the Fountain compote		195.00
M EI	Brooklyn Bridge bowl		275.00

\*\*\*\*\*

Mary Herren, 520 S. Berry, Morganfield, Ky. 42437  
PH: 502-389-3121

A EI	Floral & Grape tumblers have 4	each	\$20.00
A EI	Floral & Grape tumbler, tiny nick at bottom		17.00
A EI	Wreath of Roses/Vintage punch cup		15.00
A GI	G/C 5 3/4" fluted bowls, bsktwv ext. have 4	each	15.00
		or all for	50.00
B EI	Leaf & Beads ftd candy dish		28.00
B EI	Orangetree powder jar, slight rim roughness		45.00
M EI	Peacock at the Fountain punch bowl & base, two tiny chips top of base, don't show. Bowl minus one flame		60.00



FOR SALE

Terry L. Mackey, Box 372, R.D. 8, Carlisle, Pa. 17013

PH: 717-243-8692

R EI 7" spatula footed, Stag & Holly bowl \$750.00

\*\*\*\*\*

Harm Westerhuis, RR 1, Box 31, Platte, S. Dakota. 57369

Ph: 605-337-3631

M EI (N) Singing Bird 7 piece water set (N) \$300.00

M EI (N) Peacock at the Fountain water pitcher 125.00

P EI G/C banana bowl, small wear spot on irid. inside 150.00

P EI Sweetmeat covered compote (N) 175.00

IG EI Peacock on the Fence plate 175.00

A EI Jack in the Pulpit vase 40.00

\*\*\*\*\*

Rick Kojis, 2020 S. 80 St., West Allis, Wisc. 53219

PH: 414-327-0321, after 4 P.M.

A EI G/C butterdish, lid cracked, & damaged creamer \$45.00

P EI Rare 474 milk pitcher, crack below handle 65.00

S EI Estate miniature perfume complete, small flake 45.00

PL EI (Pearl) Milk glass Lacy Dew Drop lg covered compote 115.00

PO EI Estate creamer and sugar set 75.00

M EI Heisy #357 Tumble-Up 40.00

M EI Small Thumbprint & Chippendale souv. creamers pair 20.00

M EI Set of four small ribbed cordials 25.00

M EI Unusual panelled perfume complete 25.00

W EI Heavy Shell small candleholders, pair 25.00

\*\*\*\*\*

FOR SALE

Jos. Mello. 535 Fish Road, Tiverton R.I., 02878

PH: 401-624-2174

M EI Fenton basket two sides up \$15.00

M EI Pansy Spray bowl 8 1/2" 15.00

M EI Acorn bowl 7" 15.00

M EI Orange Tree wine glasses stemmed, 3, each 27.00

M EI Peacock & Grapes bowl 25.00

W EI Grapevine Lattice plate 7" 25.00

G EI 474 milk pitcher 100.00

A EI Wishbone bowl 8 1/2" (N) 50.00

W EI Peacock plates, 2 each 160.00

A EI G/C dresser tray 150.00

\*\*\*\*\*

Charles Adams, 2211 Sunset Blvd., Los Angeles, Ca. 90026

PH: 213-483-7755

CB EI Holly 8 1/2" round bowl \$40.00

P EI Fine Cut & Roses, candy dish, flakes on feet 20.00

M EI French Knots, hat shaped 35.00

M EI (N) G/C tumblers, 4 each 35.00

M EI Holly 8 1/2" round bowl 35.00

S EI Fashion 8 1/2" bowl 65.00

P EI Wreath of Cherries creamer 85.00

P EI Exchange Bank, Gendive, Mont. 6" plate, small

no harm flakes on flower 165.00

CB EI Orange Tree mug flared top 45.00

Send SASE for new summer carnival list

\*\*\*\*\*

Paul Berube, 11 Doris Ave., Tiverton, R.I. 02878

PH: 401-625-5303

PM EI Peacock & Urn ice cream bowl \$70.00



FOR SALE

Gary Tackel, 1216 Briarwood, Garland, Texas, 75041  
PH: 214-278-1838

DM EI	Fashion creamer	\$25.00
G EI	(N) Strawberry plate, flake on one point	55.00
M EI	Whirling Star punch bowl, base and 5 cups	75.00
G EI	Double Star pitcher, in the making base scallop	145.00
DM EI	Smooth Rays compote	20.00
W EI	Leaf Rays nappy, 1 handle	35.00
DM EI	Pine cone small berry bowl	15.00
DM EI	Waterlily & Cattails tumbler	18.00
B EI	Enamelled Cherries tumblers	each 15.00
DM EI	Imperial Pansy oval pickle dish	15.00

\*\*\*\*\*

Mike Lauri, 2100 W. 79 Terr., Prairie Village, Ks. 66208  
PH: 913-341-6053

B EI	Beaded Shell tumbler	\$42.00
S EI	Soda Gold tumbler	38.00
M EI	Soda Gold tumbler	20.00
M EI	Tree of Life tumbler	28.00
B EI	Grape & Gothic Arches tumbler	24.00
Vs EI	Orange Tree mug	55.00
G EI	Mikado compote	450.00
P EI	Butterfly & Tulip square bowl	650.00
G EI	Oriental Poppy tumbler	38.00
M EI	Oriental Poppy tumbler	25.00

\*\*\*\*\*

A.C. Dickey, 144 Chandler St., Vacaville, Ca. 95688  
PH: 707-448-9386

LM	Heavy Iris water pitcher	\$235.00
M EI	Raspberry 7 piece water set	200.00
M EI	Imperial G/C 7 piece water set	180.00
M EI	Butterfly & Fern 7 piece water set	400.00
M EI	Floral & Grape water pitcher	95.00
B EI	Ten Mums tumblers, six,	each 65.00

\*\*\*\*\*

FOR SALE

Norma Morrison, 3912 Pennsylvania Ave., Eureka, Ca. 95501  
PH: 707-443-1319

B EI	(N) Beaded Cable rosebowl	\$75.00
B EI	Vintage 3 ftd fernery	55.00
P EI	Three Fruits ftd. stippled bowl, exterior pattern	60.00
M EI	Poinsetta milk pitcher	35.00
B EI	Vintage 9½" bowl candy ribbon edge	60.00
CLMGI	Leaf Chain bowl	35.00
CLMEI	Frosted Block plate, 2 tiny flakes on rim	20.00
B GI	Cherry Circles large bon-bon	45.00
G EI	(N) Strawberry 7½" handgrip plate, basketweave exterior, tip of one flute off	45.00

\*\*\*\*\*

Valarie A. Light, 4217 E. 52 St., Maywood, Calif., 90270  
PH: 213-581-7336

P EI	Northwood G/C banana bowl	\$205.00
P EI	Northwood G/C pitcher	200.00
M EI	Dutch Windmill plated 6 for	76.00
P EI	Diamond Lace 9½" bowl	60.00

\*\*\*\*\*

Annie L. Wall, Rt. 1, Box 77, Sweet, Id. 83670  
PH: 208-584-3411

M GI	Dbl Stem Rose dome ftd bowl	\$53.00
M GI	10½" Swirl vase	25.00
M EI	Acorn Burr 5 piece	495.00
M EI	Heavy Grape Fentons	50.00
W EI	Round-up plate	160.00
P EI	Northwood large G/C punch base	160.00
G EI	Stag & Holly 7½" bowl	95.00

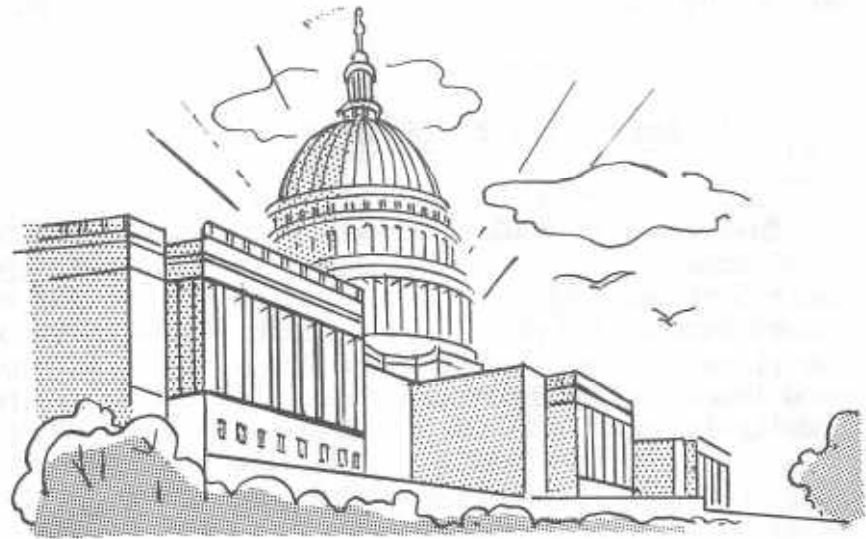
\*\*\*\*\*

FOR SALE

Frances Gannon, 8743 Branton, Highland, Ind. 46322  
PH: 219-923-8134

A EI	Millersburg Whirling Leaves bowl	\$75.00
M EI	Millersburg Strawberry ruffled bowl 7½"	50.00
DM EI	Ten Mums tumbler	40.00
DM EI	Grapevine Lattice tumbler	25.00
PM EI	Grape Arbor tumbler	25.00
P EI	(N) Oriental Poppy tumbler	40.00
P EI	(N) G/C tumbler	20.00
P EI	(N) G/C water set 7 piece	375.00
M EI	Stork & Rushes mug	25.00
M EI	Star Medallion milk pitcher	25.00

\*\*\*\*\*



WANTS

Charles Adams, 2211 Sunset Blvd., Los Angeles, Ca., 90026  
PH: 213-483-7755

P Lily for Vintage epergne  
Carnival for resale

\*\*\*\*\*

Don Doyle, 2416 Ashland Ave., Rockford, Ill. 61103  
PH: 815-964-1800

Any color Zig Zag sauce  
 Any color Seaweed sauce  
 Any color Millersburg Strawberry sauce  
 Any color Hobstar & Feather sauce  
 Any color Country Kitchen sauce  
 Any color Rosalind compote, goblet shaped  
 M Millersburg Peacock & Urn mid size  
 A " " " " " "  
 B Millersburg pieces  
 Millersburg whimsys

\*\*\*\*\*

Terry L. Mackey, Box 372, R.D. 8, Carlisle, Pa., 17013  
PH: 717-243-8692

M Butterfly & Fern water pitcher  
M Grape & Gothic Arches water pitcher

\*\*\*\*\*

Mrs. Lloyd McDaniel, 2709 Lincoln, Joplin, Mo. 67801  
PH: 417-623-3926

M Four Wide Panel buttermilk tumblers, Height 5 3/8", Width at top 3 1/8".

\*\*\*\*\*

Dick King, 925 22 Ave., Vero Beach, Fla., 32960  
PH: 305-562-6651

M EI Imperial Grape stemmed wine glasses



WANTS

Valarie A. Light, 4217 E. 52 St. Maywood, Ca., 90270  
PH: 213-581-7336

- PO Fishnet Lily
- PO Wishbone Lily
- P Open Rose small berry bowl
- Any other Peach Opal pieces

\*\*\*\*\*

Arnie L. Wall, Rt. 1, Box 77, Sweet, Id. 83670  
PH: 208-584-3411

- M Roses & Ruffle G.W.T.W. lamp shade
- P Peacock at the Fountain, Sugar, butter dish spooner

\*\*\*\*\*

Jos Mello, 535 Fish Road, Tiverton, R.I. 02878  
PH: 401-624-2174

- A Butterfly & Fern tumbler
- A Peacock at the Fountain sugar
- M Singing Birds pitcher
- DG Wreath of Roses punch cups
- M Peacock at the Fountain pitcher to table set
- W Dahlia lid to sugar

\*\*\*\*\*

Gary Tackel, 1216 Brairwood, Garland, Texas, 75041  
PH: 214-278-1838

- P G/C Sweetmeat compote lid
- P Imperial Grape stemmed wines
- Any Color Tornado vases, ribbed or plain
- A Butterfly & Fern tumblers
- R Blackberry Spray hat

\*\*\*\*\*

HAVE A FRIEND WHO COLLECTS CARNIVAL BUT NOT A MEMBER? OR MAYBE SOMEONE WHO YOU HAPPEN TO MEET AT A SALE, SHOW OR AUCTION. BE AN ACTIVE MEMBER AND HELP YOUR CLUB GROW AND GIVE THEM THIS APPLICATION. TEAR THIS PAGE OUT AND PUT IT IN YOUR BILLFOLD OR PURSE SO YOU WILL HAVE IT WITH YOU WHEN THE OCCASION ARISES.

APPLICATION FOR MEMBERSHIP  
**HEART OF AMERICA CARNIVAL GLASS ASSOCIATION**

DATE: \_\_\_\_\_

NAME: \_\_\_\_\_

SPOUSE: \_\_\_\_\_

ADDRESS: \_\_\_\_\_

CITY: \_\_\_\_\_ STATE: \_\_\_\_\_ ZIP CODE: \_\_\_\_\_

TELEPHONE: \_\_\_\_\_

Do you want your name in the directory? YES \_\_\_\_\_ NO \_\_\_\_\_

DUES: \$10.00 per year — **June to June** — Couple or Single membership.  
Monthly News Bulletin — Educational Articles

SEND DUES TO: H.O.A.C.G.A.  
Lucile Britt  
3048 Tamarak Drive  
Manhattan, Kansas 66502  
913-539-1933

Recommended by \_\_\_\_\_