

H.O.A.C.G.A.
GEORGE O. MCGREW JR.
BULLETIN SECRETARY
6800 WOODWARD
OVERLAND PARK, KANSAS 66204
913-262-8822

KANSAS



SEPTEMBER 1980

MON	TUE	WED	THU	FRI	SAT	SUN
1	2	3	4	5	6	7
8	9	10	11	12	13	14
15	16	17	18	19	20	21
22	23	24	25	26	27	28
29	30					





Heart of America
Carnival Glass Association, INC.

MEMBERSHIP JUNE TO JUNE
\$10.00 PER COUPLE OR SINGLE

PUBLISHED 15th OF
EACH MONTH

PRESIDENT: COOLEY MILLER
7605 N.W. EASTSIDE DRIVE
KANSAS CITY, MISSOURI 64152
816-741-4635

VICE-PRESIDENT: GEORGE BOLLES
5204 CATALINA
SHAWNEE MISSION, KANSAS 66205
913-432-5438

TREASURER: CORA KILOORE
4928 NEOSHO
SHAWNEE MISSION, KANSAS 66205
913-236-4546

SECRETARY: LUCILE BRITT
3048 TAMARAK DRIVE
MANHATTAN, KANSAS 66502
913-539-1933

BULLETIN SECRETARY: GEORGE O. MCGREW
6800 WOODWARD
OVERLAND PARK, KANSAS 66204
913-262-8822

EDUCATIONAL SERIES

THE POPULAR MILADY PATTERN



MILADY TUMBLERS IN RARE GREEN AND MARIGOLD

This pretty Fenton pattern was named "Milady" by Mrs. Marion Harting and it can be found in her book two on page 79. These charming "Milady" tumblers along with the beautiful tall tankard type pitcher make a very fine water set indeed. "Milady" tumblers, tankards or water sets in top color and iridescence are very desirable and will usually demand a good price. When we sold our collection of water sets back in 1974-1975, this set in super blue color and iridescence sold for twelve hundred dollars. The "Milady" tumbler, in any color, would make a very nice addition to even the most advanced tumbler collection. These tumblers are not considered as rare in most of the colors, but they are not as commonly found as such patterns as Grape & Cable, Butterfly & Berry, Peacock at the Fountain, Grape & Gothic Arches, Lustre Rose or Imperial Grape. Cobalt Blue is the color most often found in this pattern. This is not surprising as blue was a color that the Fenton Art Glass Company surely must have liked, as this color was used in all of their many water set patterns. In most cases the blue color was used more by this company in the making of any of their Carnival glass patterns than was either amethyst or green.

The marigold color was very popular with Fenton too, but in this particular pattern blue is even more common than marigold. On the other hand, "Milady" tumblers and tankards are quite scarce in amethyst. Even though I have seen a few complete "Milady" water sets in this color, it is not often that you will come across these pieces in the amethyst or purple color. It might be well for you to remember that emerald green pieces in the "Milady" pattern should be classed as very rare. I know of only two tumblers in this color and as yet I have never seen a green "Milady" pitcher. They no doubt do exist, but I have never had the opportunity to see one. While Fenton did make some white water sets in such patterns as Apple Tree, Blackberry Block, Blueberry, Orange Tree Orchard, Lattice & Grape, Ten Mums and their most common white pattern--- Floral & Grape, no white pieces have ever been reported in the "Milady" pattern.

It is quite interesting to us, that while the Fenton Company did make huge quantities of cobalt blue Carnival glass, another company that was headed by brothers of Frank Fenton and known as the Millersburg Glass Company, made very little blue Carnival glass. With the Exception of the Bernheimer bowl, almost any piece of blue Millersburg Carnival glass is considered as very rare. Oddly enough the Bernheimer bowl is found mostly in blue, but even so it is certainly not an easy piece to find. A one of a kind blue Nesting Swan bowl sold in July at the A.C.G.A. convention auction for seventeen hundred dollars. Another example of just how little blue Carnival glass the Millersburg company did make is that in our tumbler collection, we have twenty-eight Millersburg tumblers including examples of Millersburg Diamond, Feather & Heart, Marilyn, Morning Glory, Multi-Fruits & Flowers, Gay Nineties, Perfection and Hobnail, and the only one of these is in cobalt blue----that one being in the Hobnail pattern.

The featured "Milady" tumbler is of standard size and has nine panels which are evenly spaced around the tumbler. Each panel carries a charming bachelor button type flower. The flower, leaves and the stem cover the entire length of each panel. If you happen to have a Blackberry Block tumbler in your collection you will notice that it also has these same nine panels. Only in this case the clusters of berries extend out over three panels and there being a total of three clusters around the tumbler.

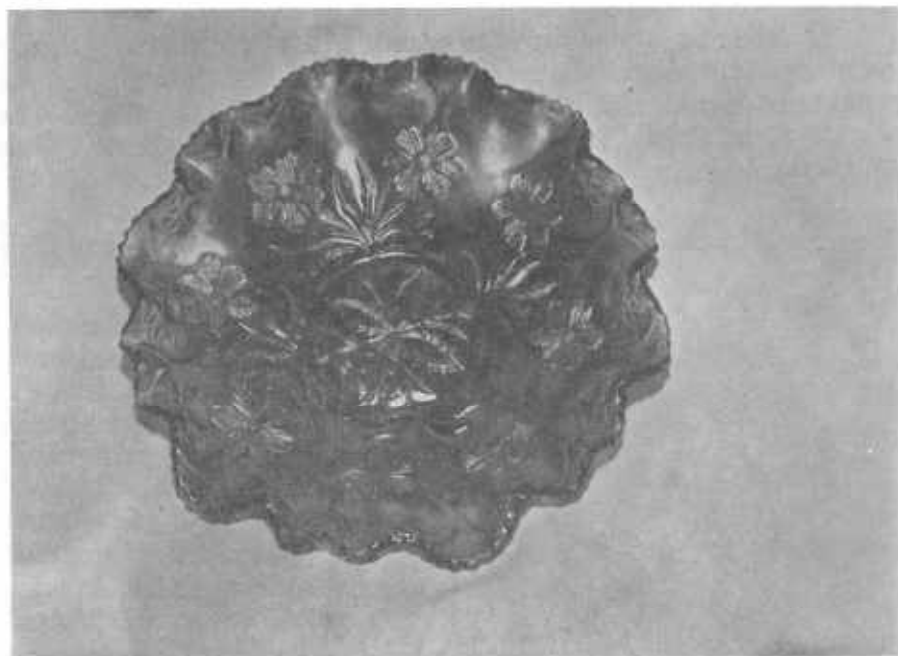
In conclusion while the "Milady" tumbler might not create the great excitement as does such tumblers as Gay Nineties, Lily of the Valley, Wisteria, Multi-Fruits & Flowers or Cone & Tie, it is a very fine and beautiful tumbler for either the beginning or the most advanced collector.

But I might also point out in closing, that I actually have seen more tumblers in any of the above mentioned patterns than I have of the "Milady" in emerald green.

This is # 32 in this series on Carnival glass tumblers. Next month we will cover some tumblers that probably cause more confusion as to the correct pattern name than any of the other tumblers on the list. These will include Soda Gold, Tree of Life, Crackle, Tree Bark, Fisherman's Net and Craquelle.

John & Lucile Britt





MILLERSBURG "PRIMROSE" BOWL IN COBALT BLUE

The "Primrose bowl usually does not demand the thrill that many Millersburg pieces do. Generally speaking, it is not too hard to find a "Primrose" bowl. It usually is found in amethyst, green and marigold. In this particular case however, we present a different story. It is a "horse with a different color", if you will pardon me using that old well known expression. This bowl is in COBALT BLUE. That makes it extremely rare! I might also mention that the "Primrose" bowl has a reverse pattern such as many of the Millersburg bowls do. In the case of the "Primrose" pattern, the exterior pattern is known as "Fine Cut Ovals".

The above piece is owned by Bill Edwards, author of the Millersburg glass book known as "Millersburg, the Queen of Carnival Glass". Bill has done a lot for Carnival glass and just recently came out with a new book on Imperial Carnival Glass, called "Imperial Carnival Glass, the Early Years". Both of these books are in beautiful color and should be in every collectors library. We are glad to have Bill as a member of H.O.A.C.C.A.

John & Lucile Britt

6



RARE "INVERTED FEATHER" WINE

This little wine in marigold was added to the writer's collection in July. It is the first one we had ever seen, even though several others are known to exist. This wine is much smaller than the more common "Inverted Feather" stemmed sundae glass. The most commonly found piece in this pattern is the cracker jar in emerald green. The stemmed sundae glass has the flared out ruffled top and is sometimes called a parfait shaped small compote. Even these two pieces are certainly not common. The water pitcher is extremely rare and only one has ever been reported, it being in marigold. The tumblers are known in green and marigold, both colors being very hard to find and considered as very desirable to any tumbler, Cambridge or Carnival glass collector. The punch set pieces are also very hard to come by and are also classed as very rare. Table set pieces are extremely rare and highly sought after. A footed sherbert and a milk pitcher are also known to exist in Carnival glass. The "Inverted Feather" is a Cambridge pattern and was made by the old Cambridge Glass Company of Cambridge, Ohio. Relatively speaking, Cambridge made very little Carnival glass. They did however, make huge quantities of hand made crystal tableware and were once called one of the greatest makers of fine glassware in this century. They were probably the largest producer of fine hand made crystal in the 1920's

and 1930's. It is with deep regret that this fine company came to its end in 1958. It was taken over by the Imperial Glass Company. "Inverted Feather" Carnival glass pieces have not been reproduced. A Cambridge Glass museum is now located in Cambridge, Ohio and shows many of their tremendously popular patterns such as Caprice. A number of Carnival glass patterns are also included in this museum, along with some of their ruby stain pieces. Some of their older patterns were signed with the "NEAR CUT" mark and some can be found with a large C in a triangle design. In the later years it was just simply marked with a paper sticker. Today, Cambridge glass of any kind is highly collectable. Collecting Carnival glass in the different Cambridge Carnival glass patterns would certainly be a fascinating and interesting project for any Carnival glass collector.

Pictures and Remarks by
John & Lucile Britt

SAD NEWS

We have received word of the death of Ellen Bonacquista, wife of Domenic Bonacquista, of Roseville, Michigan. The Bonacquista's have been members of the H.O.A.C.G.A. for many years and Ellen's presence will be missed by all who knew her.

Carnival Glass Auction

Tom Burns will have another Carnival Glass Auction in several weeks. See the DATES TO REMEMBER section for more information.

Carnival Cameos by Don Moore



SEAWEED - This beautiful pattern is not easy to find. It has all but disappeared due to the surge in the popularity of Millersburg glass the past few years.

The piece shown here is generally considered to be a plate, even though it turns up a bit at the outer edge. If you are buying one it is a bowl, but quickly becomes a plate when you get it home. It stands $1 \frac{3}{4}$ " high and is $9 \frac{1}{2}$ " in diameter. It is green and sold as a plate at the Neal Markham auction in October of 1978. It brought \$300. This piece was flattened from the rare 9" bowl. The more common shape is the larger $10 \frac{1}{2}$ " bowl. A rare $5 \frac{1}{2}$ " saucer has also been found. This pattern comes in the standard Millersburg colors of marigold, green and amethyst.

A.C.G.A. CONVENTION

The last Carnival convention is over and life doesn't seem nearly as exciting with no get togethers ahead for a long time. Maybe an auction will come up before winter sets in. We do plan to go to the Fenton Finders convention at Marietta, Ohio. Last year several nice Carnival friends were there showing some pretty Carnival. The Fenton Co. rolled out the red carpet for everyone and we enjoyed it very much. The ACGA convention at Camp Hill, Pa. was really great. A large turnout with lots of Carnival for sale and many displays. The motel was one of our best and really cooperated fully by keeping the Carnival crowd together so it was easy to visit everyone. The banquet was super with fast efficient service. Whimseys were auctioned off after to help out on club expenses. We also had "clowns" for entertainment which was fun.

We were fortunate to have the nice Maurice and Esmae Salmon of Australia with us. We do hope they liked us all as much as we did them. They are on a two month tour of the U.S. There was an auction of old Carnival on Thursday night. A rare blue Nesting Swan sold for \$1,700 to the Henry Hawks of Ohio. Everyone was sorry Mary McCaslin had a bad accident so couldn't attend because of a broken back. She is the wife of our President Bob McCaslin of Indiana. We were happy to hear of so many new comers to the conventions. Their very first time. It was mentioned they are the future of Carnival.

We all were given free a nice good-bye breakfast. We always hate to pack up and go home as the years have a habit of taking their till. Leaving empty spaces no one else can quite fill. We've just had the sad news about Ellen Bonacquista of Michigan. We remember her as a charming lady and our sympathy to all the family.

Next year ACGA will be closer for us at New Philadelphia, Ohio, it promises to be even better. The Keystone club of Pa. did a wonderful job of hosting and deserves much credit for giving us such a good time. We send loads of thanks to each one. They served punch in a lovely green G/C punch bowl. It definitely tasted better. We shall hope to see everyone next year when the convention season begins with HOACGA in April.

Grace & Byron Rinehart
Charleston, W.Va.

POLICY FOR ADVERTISING IN H.O.A.C.G.A. BULLETIN

We repeat the guide lines set up in years past for the benefit of the new members and as a reminder to all. Member families may advertise ten (10) FOR SALE and ten (10) WANT ads each month free of charge.

All advertisements, announcements, letters or any other item to be printed, must be received by the Bulletin Secretary by the 1st of the month to insure being published the month received.

1. In the absence of any chips or cracks being noted the piece will be considered perfect.
2. A 5 day return privilege at buyer's expense providing it is not as advertised.
3. All postage and insurance extra.
4. All for sale items must be priced - no bid items will be published.
5. The H.O.A.C.G.A. and paper do not accept any responsibility for items bought or sold thru this paper.
6. Marked Northwood pieces - please use (N).
7. Only OLD CARNIVAL GLASS items will be published.- The only new Carnival items accepted are the H.O.A.C.G.A. souvenir items.

For accuracy of description, the following is recommended:

- | | |
|-----------------------|----------------------|
| A - Amethyst | PM - Pastel Marigold |
| P - Purple | R - Red |
| G - Green | C - Clear |
| B - Blue | IG - Ice Green |
| CB - Cobalt Blue | IB - Ice Blue |
| M - Marigold | AMB - Amber |
| PO - Peach Opalescent | S - Smoky |
| AO - Aqua Opalescent | W - White |

- | | |
|----------------------------|------------------------------|
| EI - Excellent Iridescence | L - before color means light |
| GI - Good Iridescence | D - before color means dark |

EXAMPLES: LM EI Brooklyn Bridge bowl	\$250.00
DP EI Good Luck bowl (N) small base chip	75.00

It would be appreciated if you will please use these codes suggested, it will be less confusing to everyone and also be helpful in the typing and set up of the bulletin.

FOR SALE

Ray L. Reichard, Route # 1, Box 195, Dallastown, Pa., 17313

PH: 717-244-5760

W EI	G/C femery	\$1,450.00
B EI	Rare Homestead plate	1,350.00
M EI	Shell footed compote	18.
G EI	Imperial Rose 7 piece water set	225.00
A EI	Diamond Lace 7 piece water set	385.00
M EI	Sunflower & Diamond vases, pair	125.00
S EI	Fine Rib light shades, 4 for	90.00
A EI	Vintage nut bowl	55.00
W EI	Rose Show bowl	225.00
S EI	Out pattern ftd. vase, top smoke, base clear	37.50

Frances Gannon, 8743 Branton, Highland, Ind. 46322

PH: 219-923-8134

P EI	Singing Bird mug	\$75.00
B EI	Orange Tree mug	50.00
P EI	Singing Bird tumbler	55.00
B EI	Milady tumbler	70.00
A EI	Fluffy Peacock tumbler	55.00
B EI	Butterfly & Fern tumbler	55.00
P EI	G/C tumblers	each 22.00
P EI	Oriental Poppy tumblers	each 40.00
DM EI	Ten Mums tumbler	35.00
DM EI	Grapevine Lattice tumbler	22.00

Paul Berube, 11 Doris Ave., Tiverton, R.I. 02878

PH: 401-625-5303

M EI	Pansy bowl 9"	\$8.00
M EI	Floral & Grape tumblers, three	each 12.00
M EI	Pillar & Drape shade	30.00
M EI	Lattice & Grape tumblers, two	each 14.00
M EI	Wide Panel cake plate 15"	18.00
M EI	Hearts & Flowers compote, chip on base 1/4"	10.00
M EI	Millersburg Diamond water pitcher	75.00
M EI	Millersburg Diamond tumblers, three	each 25.00
CB EI	Good Luch 9" plate	200.00
M EI	Water Lili 2 handled bon bon, inscribed	15.00

FOR SALE

Lee Markley, RR # 1, Mentone, Ind. 46539

PH: 219-353-7678, 219-894-3451

DM EI	Tiger Lily 5 piece water set, pitcher lip rough	\$125.00
CB EI	Floral & Grape water pitcher	150.00
B EI	Floral & Grape tumblers, base chip, 2 for	30.00
A EI	Lattice & Daisy tumbler	17.50
M EI	Feather & Heart tumbler	65.00
M GI	BO PEEP mug	95.00
P EI	Memphis punch cups, 3, all for \$75 or	each 30.00
M GI	Vintage banded mug	25.00

Ruth Schinestuhl, 55 Natalie Terr., Absecon, N.J. 08201

PH: 609-641-1814

M EI	Miller's Furniture Fenton hat	\$35.00
M EI	(N) Poppy bowl, shallow	20.00
M EI	Sailboats sauce	15.00
G EI	Dragon & Lotus, great color	65.00
AB EI	Amber Dragon & Lotus	120.00
P EI	Fenton's Three Fruits, 12 sides	85.00
AO EI	Northwood's basket, round	195.00
IB EI	Northwood's G/C Piecrust bowl	165.00
AO EI	Fruits & Flowers stemmed bon-bon,flake on bottom	125.00
G EI	Tiffany color, stippled G/C bowl	45.00

Rick Kojis, 2020 S. 80 St., West Allis, Wisc. 53219

PH: 414-327-0321 after 4 P.M.

A EI	Fluffy Peacock pitcher	\$375.00
M EI	Msbg. Blackberry Wreath ice cream bowl, base chip	35.00
M EI	Unlisted Millersburg Strawberry compote	85.00
P EI	Fruits & Flowers spatula footed bowl	45.00
W EI	Fanciful bowl, candy ribbon edge	70.00
) EI	G/C whiskey decantur, no stopper	295.00
B EI	Fruits & Flowers pedestal two handled bonbon	45.00
PM EI	Three Fruits bowl, basketweave ext.	40.00
G EI	Msbg. Cosmos sauce dish	20.00
M EI	Corning Pryex insulator	15.00

FOR SALE

Orville Fadler, Rt. 2, Fredericktown, Mo. 63645
PH: 314-783-5347

P	4 Heavy Iris tumblers	each	\$38.00
M	2 Floral & Grape tumblers		11.00
M	1 Butterfly & Berry		11.00

A.C. Dickey, 144 Chandler St., Vacaville, Ca. 95688
PH: 707-448-9386

M	GI	Raspberry 7 piece water set		\$200.00
M	GI	Rambler Rose 7 piece water set		250.00
M	GI	Floral & Grape water pitcher		95.00
M	GI	Grape Arbor 7 piece water set		375.00
LM		Heavy Iris water pitcher		225.00
M	GI	G/C Imperial 7 piece water set		200.00
M	GI	Butterfly & Fern 7 piece water set		400.00
M		Luster Fruit tumblers	(9) each	8.00
B	GI	Floral & Grape 7 piece water set		450.00
M	GI	Bouquet 7 piece water set		450.00

M/M John Manhart, 405 Boone St., Washington, Mo. 63090
PH: 314-239-5143

B	GI	Floral & Grape tumblers	(2) each	\$15.00
B	GI	Floral & Grape tumblers, damaged	(2) each	10.00
PO	EI	Ski Star bowl		85.00
M	GI	Stork & Rushes tumbler		10.00
M	GI	Orange Tree mug		60.00
A	EI	Blackberry Spray bowl, candy ribbon edge		40.00
M	EI	Australian Swan bowl		60.00
W	EI	Ice Block plate		30.00
	GI	Grapevine & Lattice tumblers	(5) each	10.00
M	EI	Carnival Thistle bowl, cracked		10.00

FOR SALE

Wesley R. Strain, 832 Carson Road, Ferguson, Mo., 63135
PH: 314-524-5608

M	EI	Milady tumblers, four	each	\$40.00
W	EI	Fenton Peacock & Urn bowl		100.00
	EI	Millersburg Nesting Swan bowl		200.00
	GI	Grape & Lattice pitcher		125.00
M	GI	Grape 7 Lattice tumblers, four	each	25.00
G	EI	Loganberry vases, pair for \$450.00	each	250.00
P	EI	Millersburg Fleur de Lis		125.00
P	EI	G/C large compote, no lid		200.00
M	EI	Wildrose syrup		450.00
B	GI	Floral & Grape varient pitcher		175.00



WANTS

Lillian Clampitt, 800 E. 14, Oak Grove, Mo., 64075
PH: 816-625-3128

- DM EI Butterfly & Berry tumblers
- B EI Butterfly & Berry tumblers
- B EI Butterfly & Berry pitcher
- DM EI Panther berry bowls, ruffled top edge
- W EI Northwood Peach berry set (N)

Robert V. Larsen, 3214 19 St., Columbus, Ne., 68601
PH: 402-564-2304

W Hatpin holder that was auctioned at the 1980 convention. You name the price.

Jane Brown, 2412 McKee Dr., Orange, Texas, 77630
PH: 713-883-3736

- M EI Base only to Many Fruits punch bowl
- M EI Many Fruits punch cups

Ruth Schinestuhl, 55 Natalie Terrace, Absecon, N.J. 08201
PH: 609-641-1814

- IB Acorn Burrs, 6 cups and punch bowl base
- Side lily for Wide Panel epergne

WANTS

Iris Mels, Vittoria, Ontario, Canada, NOE1W0

- W 2 Wreath of Roses tumblers
- S Soda Gold water pitcher
- Any rare vases

John Stewart, 99 Aster Circle, Weymouth, Mass. 02188
PH: 617-337-1304

- Northwood baskets, G,A,IB,Teal
- Fine Cut & Roses rosebowls, P,w/int pattern, AMB,W, AO
- Dandelion mugs, B,SM/LAV,BO
- Knights Templar mug, IB

Ruth Schinestuhl, 55 Natalie Terr, Absecon, N.J. 08201
PH: 609-641-1814

- Anything in AO
- vaseline Fenton pieces
- Milk Glass Fenton or Northwood Carnival
- Northwood teal blue pieces

Lee Markley, RR # 1, Mentone, Ind., 46539
PH: 219-353-7678, 219-894-3451

- M Heavy Iris tumblers 3
- CB Milady tumbler, coppery iridescence
- DM 2 Fruit Salad punch cups
- G 2 Acorn Burr tumblers, gold & copper iridescence

Don Doyle, 2416 Ashland Ave., Rockford, Ill. 61103

- Any color Miller Furniture adv. pieces
- Any color, any shape, Wildflower compote
- G Millersburg Peacock & Urn sauce
- G or M Multi Fruits & Flowers sherbert

WANTS

Wesley R. Strain, 832 Carson Road, Ferguson, Mo., 63135
PH: 314-524-5608

G Fashion breakfast sugar
P G/C large compote lid
P Stopper for Diamond & Sunburst decanter
W Base for Many Fruits punch bowl
M Fans tumbler
Any color 5" Hearts & Flowers bowl

Gloria Pfeiffer, 219 Delamaine Dr., Rochester, N.Y. 14621
PH: 716-266-1273

DM Small Orange Tree footed sugar or spooner
DM Octagon wines
A or P Zig Zag, square, small sauce dish

