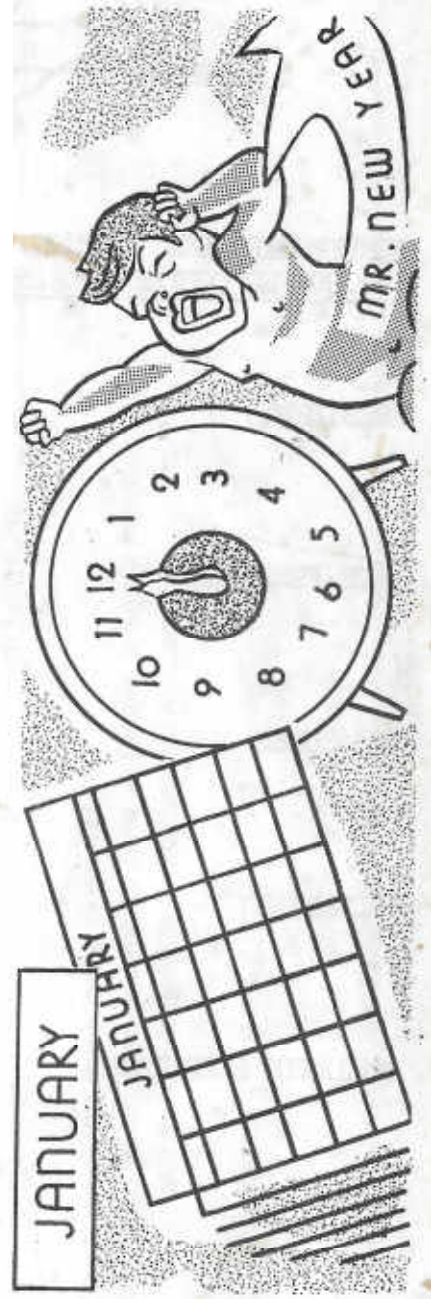


H.O.A, C.G.A.
GEORGE O. MCGREW JR.
BULLETIN SECRETARY
6800 WOODWARD
OVERLAND PARK, KANSAS 66204
913-262-8822



JANUARY 1981

| SUN | MON | TUE | WED | THUR | FRI | SAT |
|-----|-----|-----|-----|------|-----|-----|
| | 4 | 5 | 6 | 7 | 8 | 9 |
| | 11 | 12 | 13 | 14 | 15 | 16 |
| | 18 | 19 | 20 | 21 | 22 | 23 |
| | 25 | 26 | 27 | 28 | 29 | 30 |
| | | | | | | 31 |





Heart of America
Carnival Glass Association, INC.

MEMBERSHIP JUNE TO JUNE
\$10.00 PER COUPLE OR SINGLE

PUBLISHED 15th OF
EACH MONTH

PRESIDENT:

COOLEY MILLER
7605 N.W. EASTSIDE DRIVE
KANSAS CITY, MISSOURI 64152
816-741-4635

VICE-PRESIDENT:

GEORGE BOLLES
5204 CATALINA
SHAWNEE MISSION, KANSAS 66205
913-432-5438

TREASURER:

CORA KILGORE
4928 NEOSHO
SHAWNEE MISSION, KANSAS 66205
913-236-4546

SECRETARY:

LUCILE BRITT
3048 TAMARAK DRIVE
MANHATTAN, KANSAS 66502
913-539-1933

BULLETIN SECRETARY:

GEORGE O. MCGREW
6800 WOODWARD
OVERLAND PARK, KANSAS 66204
913-262-8822

EDUCATIONAL TUMBLER SERIES



THE BEAUTIFUL TEN MUMS

The beautiful "Ten Mums" is certainly one of my favorite water sets. The tall tankard type pitcher is most graceful and adds a lot of charm to this set. The "Ten Mums" water set is not classed in the rare category but would be more in the inter mediate group which includes sets that are rather hard to find. The "Ten Mums" pattern was also made in large bowls, and while I have not seen one, Mrs. Hartung lists this pattern in a large 10½" plate, and describes it as being rare in that particular piece. A "Ten Mums" plate would surely be an exceptionally fine and valuable piece of Carnival glass.

The name "Ten Mums" was derived from the ten pretty Chrysanthemums that form the inside pattern of the bowl. Nine of these specimens are evenly spaced around the bowl with the tenth one placed in the center. The water set pieces contain twelve of these pretty flowers instead of the ten that are found in the bowl. The pattern is attributed to the Fenton Art Glass Company of Williamstown, West Virginia. A nice picture of the water pitcher is shown in Heacocks book on Fenton glass called "Fenton Glass--the first twenty-five years". A complete water set is shown in color in Sherman Hand's book No.3.

"Ten Mums" tumblers can be found in marigold, blue and white. While the marigold and cobalt blue tumblers are not considered as rare, they certainly are not common either. I would class the "Ten Mums" white tumblers as being quite rare. You seldom see this one in white ever offered for sale. The white "Ten Mums" tankard is a rare beauty and I am quite sure that a great many Carnival glass collectors have not seen the white "Ten Mums" water set. These very fine "Ten Mums" tumblers are of a standard size. As is true with most Fenton pattern tumblers the bottom of the base on the "Ten Mums" is completely smooth. In other words, they carry no design such as the rayed star on the bottom of their base.

I would describe the "Ten Mums" tumbler as being both beautiful and desirable. The detail, while not elaborate, is outstanding. The pretty flowers show a distinct version of the real true life Chrysanthemum that bloom in our yards during the Fall season of the year. The artist left no doubt as to the name of this flower. With the exception of the white one, which sells quite high, the "Ten Mums" offers the beginning collector a super tumbler at a reasonable price. In my opinion, all tumbler collectors should look for one of these for his or her collection. The advanced tumbler collector, as well as the beginner, will find that one of each of these three colors will add a lot of beauty and charm to their collection.

This article on the "Ten Mums" tumblers is No. 36 in this series on Carnival glass tumblers. It has been some time now since we have featured a Millersburg tumbler, so next month we will discuss a tumbler that was made at Millersburg, Ohio called "Feather & Heart." Since there is a lot of confusion with this fine Millersburg tumbler and the rare "Inverted Feather" tumbler that was made by Cambridge, we will include a picture of both these tumblers in order to help you distinguish the difference between these two fine tumblers. Both these tumblers are highly sought after and were made by companies that are no longer in operation.

John & Lucile Britt

PICTORIAL PATTERN PARADE

THE BIG AND LITTLE IN CARNIVAL GLASS



GRAPE AND CABLE MASTER PUNCH SET

The master or banquet size "Grape & Cable" or "Northwood Grape" punch set is at least one of the largest of our Carnival glass pieces. The set is very desirable and is sought after by many Carnival glass collectors. This must have been a very popular item back when it was produced, as Northwood certainly made a lot of them. You see them mostly in purple, but quite a number can also be found in marigold. They would be considered rare in cobalt blue or in any of the pastel colors. I have never seen one in aqua opalescent, even though a few punch cups have shown up in that color.

It is interesting to note that this set was advertised in an old 1910 Butler Brothers catalog for \$4.25. This included 12 cups and was packed one set in a barrel. In an old ad reprint and shown in Sherman Hands book No. 1 "Colors in Carnival Glass" it was listed at \$3.75 for the set with 12 cups and hooks, one set packed in a barrel.

cont;

Northwood also made this punch set in two smaller sizes. The cups are interchangeable with all three sets. "Grape and Cable" was the most massive produced of all Carnival glass patterns and this is the largest piece of this pattern. We are showing it here at this time mainly for you to compare the size of this giant piece with the tiny Carnival shot glasses which we believe are two of the smallest pieces of Carnival glass that was made to hold liquids.

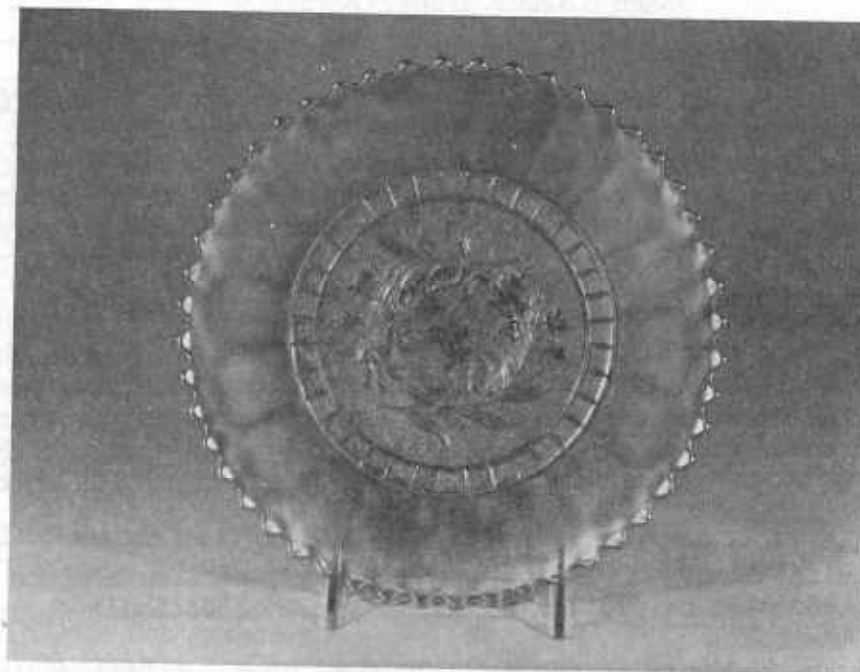


GRAPE & CABLE PUNCH CUP AND TINY SHOT GLASSES

In this picture we have taken one of the punch cups from the punch set we have just described and show it here along side two cute little shot glasses. Note how tiny these shot glasses are along side the "Grape and Cable" punch cup. The little shot glass on the left is the "Ranger Minature" and is shown in Owens tumbler book #206. The shot glass on the right is unlisted and we have called it "Banded Diamonds & Bars". Both these little glasses are in deep marigold with excellent iridescence. Both patterns were also made in small juice glass size tumblers. We are still trying to find the maker of these two patterns. It is possible that they could be of English origin, but of course this is only a guess. Regardless of who made them they are certainly cute and would be loved by any miniature collector. We thought it would be interesting for you to see just how tiny they are compared to a "Grape & Cable" punch cup.

Pictures & Remarks by John & Lucile Britt

Carnival Cameos by Don Moore



DECORATED WINDFLOWER PLATE - The color does not show well on black and white photos, but the leaves on the marigold plate shown here are green and the flowers red. They were obviously painted at the factory, as the irridization covers the paint. This is not the case with some of the other decorated pieces in Carnival. While this pattern has been attributed to Northwood, I don't think this has ever been confirmed.

This plate came originally from Mrs. Presznick. I find it most interesting that the other two decorated pieces in this pattern that I have heard of were also traced back to this Carnival pioneer. Over the years she owned a number of experimental pieces, and these decorated Windflower plates just might fall into that category.

GRAPE & CABLE CANDLELAMP

Your 1981 H.O.A.C.G.A. souvenir will be the very popular "Grape & Cable" candlelamp in ruby red and will be made by the Fenton Glass Co. The souvenir is a copy of the original Northwood "Grape & Cable" candlelamp with the H.O.A.C.G.A. "Good Luck" horseshoe molded into the shade. The old Northwood candlelamp has always been a favorite among Carnival glass collectors.

The lamp will sell for \$75.00 and again this year we will restrict the number to be made at 600. We realize that \$75.00 is much more than souvenirs usually sell for but the candlelamp consists of two pieces of glass plus the metal shade holder. The lamp requires two separate molds one for the shade and one for the candlestick. So the price of \$75.00 for the three pieces is in line with the one piece souvenirs which usually sell for about half of this price.

It is our belief that you will be getting a very desirable piece of glass which you will be pleased to add to your collection.

The sale of the souvenir is the clubs primary means of financial support for the clubs convention other yearly activities and the bulletin and postage that the dues do not cover.

The candlelamp will be difficult to make Whimseys of but we will do something with them plus we will make some in different colors.

Bryon and Grace Rhinehart took their candlelamp to the Island Mold Co. in Wheeling, W. Va. to be used as the model for the mold, so if any flaws show up in the lamp we will just refer to them as a Rhinehart flaw.

CARNIVAL GLASS AUCTION

John Woody will hold an auction of the fine Carnival glass collection of M/M Ralph Mullins at 10:00 A.M. on February 7, 1981 at the Midway Motor Lodge, St. Louis, Westport, 2434 Old Dorset Road, Exit I 270 at Old Dorset Road. Dorset Road is South of I70 & I270. The number to call for reservations is 314-291-8700 and be sure to mention that you plan to attend the Woody Auction since most of the rooms are reserved for the auction guests.

Among some of the fine pieces of Carnival to be auctioned are:

A/O Loving Cup (only one known)

A/O Fisherman mug

A/O Singing Bird mug

P Farmyard bowl, square

P Inverted Strawberry milk pitcher (rare)

G Greek Key water set

B Panelled Dandelion water set

G " " " "

A collection of 60 mugs

A collection of 40 plates

M Birds & Cherries plate

There will be a total of 250 pieces of Carnival auctioned, including many hard to find items.

HAPPY ANNIVERSARY

M/M W.D. Bennett of East Point, Georgia, celebrated their 50th Wedding Anniversary this past December 31. Congratulations and our best wishes for many more happy years together. Mrs. Bennett has been in and out of the hospital these past few weeks but was able to return home for this occasion and the Holidays.



The green vase on the right is the one normally seen. The marigold vase on the left is something else. An inch taller than its cousin, footed rather than collar based, tightly pinched tri-cornered top. The pattern detail is identical on the two pieces and both are made from a three piece mold, with the mold lines coinciding with the three zipper ribs which separate the three tornados. The foot on the marigold vase is very similar to that found on the corn vase, but slightly larger at 3½". The foot is an integral part of the mold rather than being applied. The tightly crimped top shows obvious tooling marks at the point where it was pinched and held to flare and form the top. The marigold iridescence is applied both inside and out, and while the color is excellent it does show some mottling of color on the lower portion of the piece, as is commonly found on vases that have been constantly filled with water. Although I have never seen one, I have been told that a Loetz art glass vase of similar footed configuration exists. However, the Loetz vase has applied tornados rather than being a part of the mold as is the case here.

It is my opinion that these two pieces were made from different molds and the sameness of the pattern leads me to believe that it too was produced by Northwood. I am presently laboring under the probable mistaken assumption that this piece is a one of a kind. Anyone knowing of other such pieces please put me back in touch with reality.

John D. Resnick
Culver City, Ca.

We repeat the guide lines set up in years past for the benefit of the new members and as a reminder to all. Member families may advertise ten (10) FOR SALE and ten (10) WANT ads each month free of charge.

All advertisements, announcements, letters or any other item to be printed, must be received by the Bulletin Secretary by the 1st of the month to insure being published the month received.

1. In the absence of any chips or cracks being noted the piece will be considered perfect.
2. A 5 day return privilege at buyer's expense providing it is not as advertised.
3. All postage and insurance extra.
4. All for sale items must be priced - no bid items will be published.
5. The H.O.A.C.G.A. and paper do not accept any responsibility for items bought or sold thru this paper.
6. Marked Northwood pieces - please use (N).
7. Only OLD CARNIVAL GLASS items will be published.- The only new Carnival items accepted are the H.O.A.C.G.A. souvenir items.

For accuracy of description, the following is recommended:

| | |
|-----------------------|----------------------|
| A - Amethyst | PM - Pastel Marigold |
| P - Purple | R - Red |
| G - Green | C - Clear |
| B - Blue | IG - Ice Green |
| CB - Cobalt Blue | IB - Ice Blue |
| M - Marigold | AMB - Amber |
| PO - Peach Opalescent | S - Smoky |
| AO - Aqua Opalescent | W - White |

| | |
|----------------------------|------------------------------|
| EI - Excellent Iridescence | L - before color means light |
| GI - Good Iridescence | D - before color means dark |

| | | | |
|--------------|----|---------------------------------------|----------|
| EXAMPLES: LM | EI | Brooklyn Bridge bowl | \$250.00 |
| DP | EI | Good Luck bowl (N) small base chip | 75.00 |

It would be appreciated if you will please use these codes suggested, it will be less confusing to everyone and also be helpful in the typing and set up of the bulletin.

FOR SALE

GEORGE O. MCGREW JR., 6800 Woodward, Overland Park, Ks., 66204
PH: 913-262-8822

| | | |
|-------|--|----------|
| P EI | Mlsbg. Peacock & Urn Variet, 5 3/4" sauce, very rare very minute crack in collar base | \$180.00 |
| M EI | Twins Fruit bowl | 65.00 |
| G EI | Vintage 9" bowl | 30.00 |
| B EI | Vintage 9" bowl | 35.00 |
| G EI | Maple Leaf & Acorn 8" bowl, candy ribbon edge | 40.00 |
| AO EI | Leaf & Beads rose bowl, interior crack (N) | 60.00 |
| IG EI | Corn vase (N), straw mark & rim roughness, both done in manufacturing | 140.00 |
| B EI | Rustic 19" vase | 25.00 |

JACK D. WILSON, 4148 N. Springfield, Chicago, Il., 60618
PH: 312-583-7339

| | | |
|-------|--|----------|
| M GI | Wild Rose Wreath miniature compote, Pres. Bk.4 | \$125.00 |
| B GI | Mlsbg. Hobnail pitcher, small flake on base bottom | 995.00 |
| W GI | G/C medium punch bowl base | 95.00 |
| AO EI | (N) vase 11" high, 4 rib design | 100.00 |
| G GI | Orange Tree powder jar, very rare | 125.00 |
| M GI | Mlsbg. Multi-Fruits & Flowers punch set with 6 cups | 750.00 |
| W EI | Persian Garden ice cream bowl | 120.00 |
| B EI | Mlsbg. Bernheimer Bros. Many Stars bowl, sm. chip edge | 200.00 |
| A GI | Mlsbg. Cherries compote, rare | 585.00 |
| CL GI | Stork ABC child's plate | 25.00 |

FRANCES GANNON, 8743 Branton, Highland, Ind., 46322
PH: 219-923-8134

| | | |
|------|---------------------------------------|---------|
| P EI | Singing Bird mug | \$70.00 |
| P EI | G/C tumbler | 20.00 |
| A EI | Fluffy Peacock tumbler, gold tone | 50.00 |
| B EI | Milady tumbler | 70.00 |
| B EI | Butterfly & Fern tumbler | 50.00 |
| W EI | Rose Show bowl, small rim nick | 130.00 |
| P EI | Good Luck bowl | 85.00 |
| A EI | Mlsbg. Primrose bowl | 70.00 |
| A EI | Mlsbg. Whirling Leaves bowl | 70.00 |
| M EI | Mlsbg. Blackberry ruffled 7 1/2" bowl | 40.00 |

FOR SALE

JOHN D. RESNICK, 4290 Jackson Ave., Culver City, Ca., 90230

| | | |
|------|-------------------------------------|---------|
| M EI | Little Flowers 10" bowl | \$45.00 |
| B EI | " " " " | 75.00 |
| B EI | Little Flowers 5" bowl | 28.00 |
| A EI | " " " " | 28.00 |
| A EI | Lotus & Grape bon-bon | 38.00 |
| G EI | Holly 8" bowl | 55.00 |
| A EI | Feathered Serpeant 10" bowl | 65.00 |
| M EI | Double Stemmed Rose bowl | 30.00 |
| A EI | " " " " | 45.00 |
| M EI | Chrysanthemum Footed 10" round bowl | 50.00 |

RICK KOJIS, 2020 S. 8o St., West Allis, Wi., 53219
PH: 414-327-0321 after 4 P.M.

| | | |
|-------|---|------------|
| G EI | Millersburg Whirling Leaves tri-corner bowl | \$75.00 |
| PM EI | G/C bon-bon | 20.00 |
| IB EI | Concave Diamonds tumblers, have two | each 20.00 |
| M EI | Lined Lattice 4 1/2" vase | 20.00 |
| SM EI | Colonial candlestick | 10.00 |
| LG EI | Orange Tree mug | 50.00 |
| P EI | Grapevine Lattice tumbler | 25.00 |
| AQ EI | Fenton's G/C 6" bowl | 45.00 |
| P EI | Double Stemmed Rose dome footed plate | 50.00 |
| B EI | Blackberry miniature compote, base flake | 15.00 |

JOS. MELLO JR., 535 Fish Rd., Tiverton, R.I., 02878
PH: 401-624-2174

| | | |
|------|--|---------|
| G EI | Louisa footed bowl | \$18.00 |
| B EI | Blackberry miniature compote | 35.00 |
| B EI | Grape & Gothic Arches creamer | 40.00 |
| A EI | Northwood Cherry bowl, three footed | 45.00 |
| M EI | " " " " | 35.00 |
| M EI | Lattice & Grape pitcher (cracked), four tumblers | 90.00 |
| M EI | Persian Medallion bon-bon | 20.00 |
| A EI | Many Fruits punch bowl top | 225.00 |
| A EI | Many Fruits punch cup, made with rough top | 12.00 |
| A EI | Stippled Rays bon-bon | 25.00 |

FOR SALE

WAYLAND BILLINGSLEY, 206 N. Union St., Appleton, Wi., 54911
PH: 414-733-3102

| | | |
|-------|---|----------|
| M EI | Heavy Grape Berry set by Fenton | \$115.00 |
| A EI | Diamond & Sunburst wine decantur, stopper, 4 wines | 340.00 |
| A EI | Peacock at the Fountain, butter dish, creamer (has tiny flake on side of spout and spooner) | 375.00 |
| CLMEI | Imperial Grape wine decantur, stopper, 1 wine | 150.00 |
| S EI | Large 10 3/8" Grape bowl by Imperial | 39.00 |
| B EI | Cobalt Poppy Pickle by Northwood | 59.00 |
| B EI | Cobalt Fernery or Nut bowl, ftd., grape pattern | 60.00 |
| PO EI | Caroline Dogwood bowl | 115.00 |
| G EI | Singing Bird Pitcher, 6 tumblers, 1 with tiny flake | 550.00 |
| G EI | Strawberry 8 1/2" bowl by Northwood | 60.00 |

JOHN STEWART, 99 Aster Circle, Weymouth, Mass., 02188
PH: 617-337-1304

| | | |
|------|---|----------|
| G EI | 474 punch bowl base | \$120.00 |
| M GI | Engraved Grape, rare juice set, pitcher, 3 tumblers | 265.00 |
| G EI | Inverted Strawberry candle holder, tiny nicks base | 70.00 |
| W EI | Heavy Shell candle holder | 60.00 |
| A EI | Flute tumbler | 60.00 |
| M EI | File tumbler | 135.00 |
| B EI | Peach tumbler | 55.00 |

LEE E. BRIIX, Rt., 1, Hennessey, Ok., 73742
PH: 405-853-2276 after 5 P.M.

| | | |
|------|---|---------|
| M EI | G/C tumbler | \$30.00 |
| M EI | Tiger Lily 7 piece water set, flake on 1 tumbler | 190.00 |
| B EI | Stork & Rushes beaded tumblers each | 24.00 |
| G EI | G/C spooner (N) | 95.00 |
| G EI | Tree Trunk 10 1/2" vase (N) | 30.00 |
| A GI | Mlsbg Primrose 10" bowl, small rim flake | 40.00 |
| P EI | G/C 8" bowl | 40.00 |
| A EI | Leaf Column 10" vase | 30.00 |
| M GI | Golden Harvest decantur, broken bubble on stopper | 70.00 |

Send large SASE for Carnival glass list

FOR SALE

MARY WELCH, 213 Alexander, Scotia, N.Y., 12302
PH: 518-393-7748

| | | |
|------|---|------------|
| G EI | Center Lily for Colonial epergne | \$26.00 |
| B EI | Celeste Blue Florentine candlestick | 20.00 |
| A EI | Compote vase | 49.00 |
| A EI | Vintage wine | 25.00 |
| P EI | Vintage wine | 25.00 |
| B EI | Enameled Cherries tumbler | 12.00 |
| M EI | Lustre Rose tumblers, 12 | each 10.00 |
| P EI | G/C large compote, minus cover, or will buy cover | 125.00 |

W.R. STRAIN, 832 Carson Rd., Ferguson, Mo., 63135
PH: 314-524-5608

| | | |
|------|----------------------------------|---------|
| M EI | Hobstar Band tumbler | \$35.00 |
| M EI | Grape & Lattice tumblers | 25.00 |
| M EI | Bouquet tumblers | 30.00 |
| M EI | Coin Dot tumblers | 20.00 |
| A GI | Butterfly & Fern tumblers | 35.00 |
| M EI | 474 water pitcher | 125.00 |
| A EI | Diamonds water pitcher | 175.00 |
| M EI | Stork & Rushes punch bowl & base | 125.00 |
| B EI | Pinecone 6" plate | 65.00 |
| M EI | Broken Arches punch bowl & base | 200.00 |

PEGGY SHEFFIELD, 201 Popular St., Prattville, Al. 36037
PH: 205-361-0978

| | | |
|------|---|---------|
| M GI | Double Dutch, 3 footed bowl 8" | \$25.00 |
| | Birmingham Age Herald plate, good condition | 800.00 |

FOR SALE

JOAN FREEZE, 4205 W. 7th Ave., Kernewick, Wash., 99336
PH: 509-783-3935

| | | |
|-------|--|-----------------|
| M EI | Springtime 5" berry bowls (N), super mint, have 3 each | \$40.00 |
| M EI | Springtime 5" berry bowl, cracked (N) | 20.00 |
| M EI | Springtime 8½" master berry bowl (N) rim roughness or will sell above matched set for | 40.00 165.00 |
| G EI | Raspberry milk pitcher (N) pin nicks at handle base | 120.00 |
| G EI | Raspberry matching tumbler (N) | 35.00 |
| G EI | Fern compote (N), Daisy & Plume ext. two | 70.00 |
| M EI | Intaglio Daisy 8" round bowl | 40.00 |
| DM EI | Blocked Diamond mustard jar, small chip on 1 foot | 40.00 |
| LM GI | Feathered Arrow 9" bowl | 15.00 |

KEN & MARCIE OSBON, 34931 S.E. Dodge Park Blvd. Gresham, Ore. 97030
PH: 503-663-3702

| | | |
|-------|---|----------|
| M GI | Butterfly & Berry hatpin holder | \$650.00 |
| AO EI | Dandelion mug | 450.00 |
| G GI | Fenton's Two Flowers berry set, 4 small | 195.00 |
| M GI | G/C berry set 7 piece | 225.00 |
| W GI | Peacock & Urn 5½" ice cream bowls, have two, each | 70.00 |
| AO GI | Dandelion mug, cracked | 150.00 |
| W EI | Blueberry tumblers, two | 145.00 |
| B GI | Peacock & Urn 5½" ice cream bowls, have two | 65.00 |
| M GI | Acanthers plate | 130.00 |

MARV & DOT LOUGHMILLER, Rt. 2, Box 1096, Troutdale, Ore. 97060
PH: 503-665-9225

| | | |
|-------|--|---------|
| B GI | Illusion two handled nappy | \$55.00 |
| LM GI | G/C whiskey decantur and stopper, heat check in neck | 425.00 |
| PO GI | Puzzle two handled bon-bon | 50.00 |
| P GI | Luster Rose fernery | 65.00 |
| M GI | Kangaroo large bowl, Australian | 145.00 |
| G GI | Leaf Chain plate | 70.00 |
| P GI | S Repeat punch cup | 35.00 |

FOR SALE

RALPH SIMENDINGER, 1002 Maycliffe Pl., Cincinnati, Ohio, 45230
PH: 513-231-5381

| | | |
|-------|---------------------------------|---------|
| P EI | Singing Bird mug (N) | \$65.00 |
| G GI | Strawberry plate 9" (N) | 90.00 |
| AO GI | Hearts & Flowers compote | 150.00 |
| IG GI | Peacock on the Fence plate 9" | 175.00 |
| G EI | Thistle bowl 9" | 50.00 |
| B EI | Hollyberry plate 10" | 90.00 |
| M EI | Horses Head Medallion 7½" plate | 90.00 |
| P EI | Cobblestone bowl | 65.00 |
| P EI | Nautilus, unlettered | 150.00 |
| P GI | Swan, master salt | 85.00 |

STERLING BUTZ, 221 N. Adams St., Allentown, Pa., 18104

| | | |
|------|--|----------|
| W EI | Peacock on the Fence bowl (N) | \$125.00 |
| M EI | Grape Wreath bowl | 55.00 |
| R EI | Fenton open edge hat | 130.00 |
| M EI | 774 Milk pitcher | 70.00 |
| A EI | G/C plate (N) | 65.00 |
| G EI | G/C plate (N) | 65.00 |
| B EI | Windflower plate | 75.00 |
| G EI | 6" Pinecone plate | 30.00 |
| M EI | G/C punch set, small size, 8 piece | 300.00 |
| A EI | G/C butterdish, small flake on top on thumbprint | 100.00 |

NORMA WAGNER, Box 52, Bagley, Iowa 50026

| | | |
|-------|---|----------|
| BA EI | Black Amethyst Peacock & Grape 9" bowl | \$145.00 |
| G EI | Two Flowers or Flower & Waterlilies 10½" ftd bowl | 125.00 |
| CB EI | Horse Medallion rosebowl, irid. on outside, pattern inside | 95.00 |

FOR SALE

RUTH SCHINESTUHL, 55 Natalie Terr., Absecon, N.J. 08201
PH: 609-641-1814

PO EI Ruffled Round-Up plate \$175.00
PO EI Jeweled Heart bowl, large 95.00

GEORGE LOESCHER, 2420 Park, Beloit, Wi., 53511
PH: 608-362-3104

R EI Stretch vase 9", gorgeous and old \$40.00
M EI Sailboat wine glass 26.00
R EI Very rare Fashion punch cup 275.00
M EI Little Flowers chop plate 10½" 300.00
A EI Ribbons & Rays bowl, no ruffle 50.00
P EI Heavy Grape bowl E37. Chip on collar but gorgeous 75.00
M EI Pansy dresser tray, tiny nick on collar but no harm 35.00
B EI Orange Tree mug, flares out a lot 40.00
SM EI Diamond Ring bowl, very pretty 25.00
PO EI Northwood Cherries 9" bowl 65.00

M/M ERNEST LANINGHAM, 3020 Country Square Dr., #1218, Carrollton, Tx. 75006

PH: 214-245-1602 after 5 P.M.
~~LM EI Kitten dish, two sides up \$80.00~~
LM EI Kitten dish, four sides up 80.00
G EI Heavy Grape chop plate 275.00
G EI Heavy Grape 8" plate 75.00

HAVE A FRIEND WHO COLLECTS CARNIVAL, BUT IS NOT A MEMBER? OR MAYBE SOMEONE WHO YOU HAPPEN TO MEET AT A SALE, SHOW OR AUCTION. BE AN ACTIVE MEMBER AND HELP YOUR CLUB GROW AND GIVE THEM THIS APPLICATION. TEAR THIS PAGE OUT AND PUT IT IN YOUR BILLFOLD OR PURSE SO YOU WILL HAVE IT WITH YOU WHEN THE OCCASION ARISES.

APPLICATION FOR MEMBERSHIP
HEART OF AMERICA CARNIVAL GLASS ASSOCIATION

DATE: _____

NAME: _____
SPOUSE: _____
ADDRESS: _____
CITY: _____ STATE: _____ ZIP CODE: _____
TELEPHONE: _____

Do you want your name in the directory?
DUES: \$10.00 per year — **June to June** — Couple or Single membership.
YES _____ NO _____
Monthly News Bulletin — Educational Articles

SEND DUES TO: H.O.A.C.G.A.
Lucile Britt
3048 Tamarak Drive
Manhattan, Kansas 66502
913-539-1933

Recommended by _____