

Dr. A. C. G. A.

GEORGE W. MCGREW JR.

FELICITIN SECRETARY

6800 WOODWARD

OWENLAND PARK, KANSAS 66204

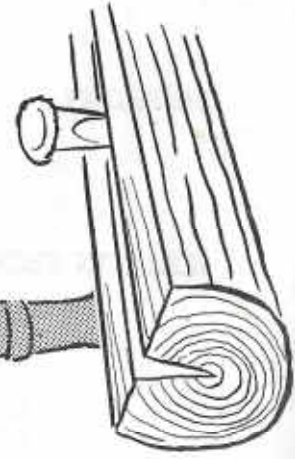
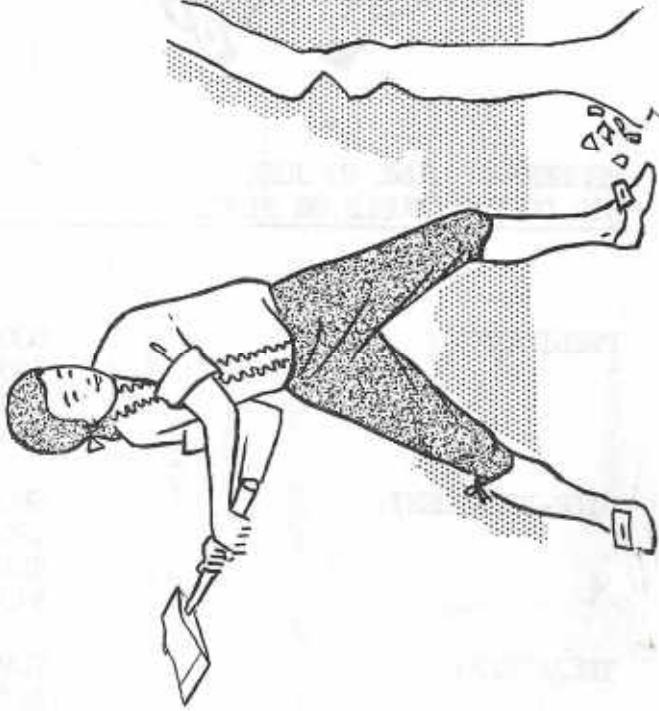
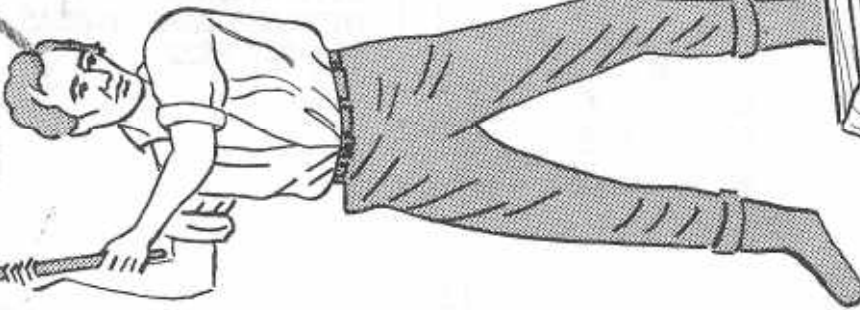
913-262-8872

RAVAGE OUTPOST - NEW YORK
USA 28c



KANSAS CITY, MO
FEB 19 1 1981
PM
FIRST CLASS

FEBRUARY
1 2 3 4 5 6 7
8 9 10 11 12 13 14
15 16 17 18 19 20 21
22 23 24 25 26 27 28





Heart of America
Carnival Glass Association, Inc.

MEMBERSHIP JUNE TO JUNE
\$10.00 PER COUPLE OR SINGLE

PUBLISHED 15th OF
EACH MONTH

PRESIDENT: COOLEY MILLER
7605 N.W. EASTSIDE DRIVE
KANSAS CITY, MISSOURI 64152
816-741-4635

VICE-PRESIDENT: GEORGE BOLLES
5204 CATALINA
SHAWNEE MISSION, KANSAS 66205
913-432-5438

TREASURER: CORA KILGORE
4928 NEOSHO
SHAWNEE MISSION, KANSAS 66205
913-236-4546

SECRETARY: LUCILE BRITT
3048 TAMARAK DRIVE
MANHATTAN, KANSAS 66502
913-539-1933

BULLETIN SECRETARY: GEORGE O. MCGREW
6800 WOODWARD
OVERLAND PARK, KANSAS 66204
913-262-8822

MINUTES OF THE JANUARY MEETING

OF H.O.A.C.G.A.

The January meeting of the Heart of America Carnival Glass Association was hosted by Mr. & Mrs. Ralph Mullins of Independence, Mo. on the 25th of January at 2 PM. Lunch was served to all before the meeting was called to order by President Cooley Miller. The attendance was very good with 30 members present.

The minutes of the last meeting, November 23, 1980, were read by Linda McGrew. They were approved at read.

The treasurer, Cora Kilgore, gave the treasurers report: last reported balance was \$12,663.22, expenditures of \$3,115.16, deposits of \$5,840.25 and a balance of \$15,388.31 as of January, 1981. The report was placed on file for audit.

Linda McGrew read the minutes from the special board meeting held on January 10, 1981, at the Holiday Inn. This meeting was called to get monies allocated for the planning of the convention.

Bob Grissom reported on the souvenirs and presented the metal part of the candelamp for viewing as to the progress of this years exciting souvenir. Mr. Grissom then read a letter that he had received from a man requesting to buy up all surplus ice green hatpin holders from last years convention. A discussion followed and a decision to hold all surplus 1980 souvenirs until the convention this year was agreed on. Mr. Grissom passed on to the club members the option of having indexes in the notebooks. The Club felt that this was too much extra expense at this time.

Sadie Treff, Convention Chairwoman, gave a short report on the convention: all reservation cards have been mailed and rooms are filling up fast.

Under new business, President Miller asked for volunteers to serve as chairman of the Nominating Committee to secure officers for the coming year. This was postponed until the next meeting.

The meeting was then adjourned with the next meeting being hosted by Mr. & Mrs. Charles Mochel of Mission, Kansas. And, an additional thank you to Ralph & Florence for being such gracious hosts.

Linda McGrew, Sec.

Cooley Miller, President



FEATHER & HEART--BY MILLERSBURG

The "Feather & Heart" was named by Mrs. Hartung and is featured in her book three. It is among the geometric and near-cut type patterns of that edition. "Feather & Heart" tumblers are often confused with the more rare "Inverted Feather" tumbler. A number of times I have answered advertisements of an "Inverted Feather" tumbler which was offered for sale, only to find out that it was a "Feather & Heart" tumbler. For this reason, we are showing the "Inverted Feather" tumbler in picture # 2 of this article for your comparison of the two different patterns. Note that both of these tumblers carry the Hobstar motifs and both also contain the near-cut type feather design. Only the "Feather & Heart" tumbler contains the heart, however.

As mentioned above the "Feather & Heart" is a Millersburg pattern and was made by the short lived Millersburg Glass Co. of Millersburg, Ohio. I have found that the green version, shown in the center of the above picture, is very hard to find. While not at all common, the amethyst and marigold tumblers in this pattern are much easier to locate than are those of the green color.

cont:

I have noticed that a number of the marigold tumblers have the date etched on the tumbler near the top rim and this etching also usually contains initials of various kinds. There are four of the large hearts placed around the tumbler, each surrounding a star shaped figure. Notice that the hearts are placed upside down. There are 12 of the feather type panels. The tumbler has a star of twenty-four points pressed into the bottom of its base. These tumblers are of standard size, about four inches tall, but as you can see they will sometimes vary somewhat in height.

This Millersburg pattern can be found advertised in an old 1910 Butler Brothers catalog. Hobstar & Feather, Marilyn and Ohio Star are other Millersburg patterns that are featured in a group shown in this catalog. The "Feathers & Heart" tumbler in any color would make a fine addition to your collection, and in my opinion, the green tumbler in this pattern could be classed as rare.



RARE INVERTED FEATHER TUMBLERS

The "Inverted Feather" tumblers are shown above in marigold and green. These are the only two colors known in tumblers of this pattern, in which I am aware. It is possible that a few were made in amethyst, but I have never seen one.

cont:

This picture is included here in this article for you to compare it to the "Feather & Heart" pattern which is shown in the first snapshot. Note that the feather type design of the "Inverted Feather" tumbler is at the bottom, while it is placed at the top part of the "Feather & Heart" tumbler. The "Inverted Feather" pattern was made by the old Cambridge Glass Co. of Cambridge, Ohio. While I have never seen a tumbler that was signed, the only water pitcher I know of was signed with the "NEAR-CUT" mark on its handle. These "Inverted Feather" tumblers are rare, very desirable and highly sought after by Carnival glass tumbler collectors. The "Inverted Feather" tumbler is certainly one of the top tumblers in Carnival glass and would be rated close to the top of the list by most Carnival glass tumbler collectors.

There is not enough "Inverted Feather" tumblers around in order for us to all have one for our collections. For this reason, unless you are lucky, the price for one of these will be quite high. If you are lucky enough to even find one that is for sale.

We hope that the above pictures of these two fine tumbler patterns will help you to distinguish the difference between the two patterns. This is # 37 in this series on Carnival glass tumblers. Next month we will discuss a very popular Northwood pattern known as "Grape Arbor". This very pretty Carnival glass tumbler comes in many colors and was also produced in custard glass.

John & Lucile Britt



4

PICTORIAL PATTERN PARADE



THE GRAPE & CABLE CANDLE LAMP

This little "Grape & Cable" candle lamp is highly sought after by Carnival glass collectors. The lamp consists of the glass candle stick, a metal frame that fits down over the candle and the Carnival glass lamp shade itself. The candle is placed down into the candlestick and the metal piece fits over the candle and the upper part of the frame supports the glass lamp shade. This candle lamp was made by Northwood and the candle stick has the Northwood 'N' impressed up in the dome of the foot. The shade itself is unmarked, but carries the famous Northwood Grape & Cable pattern.

cont;

5

These hard to find little beauties were made in marigold, green and purple. The green lamp is the most often found color, but even the green is certainly not easy to find. The purple lamps usually demand the highest price. No doubt, many of the pretty shades have been broken throughout the years, as you will find the candle sticks sometimes without the shade.

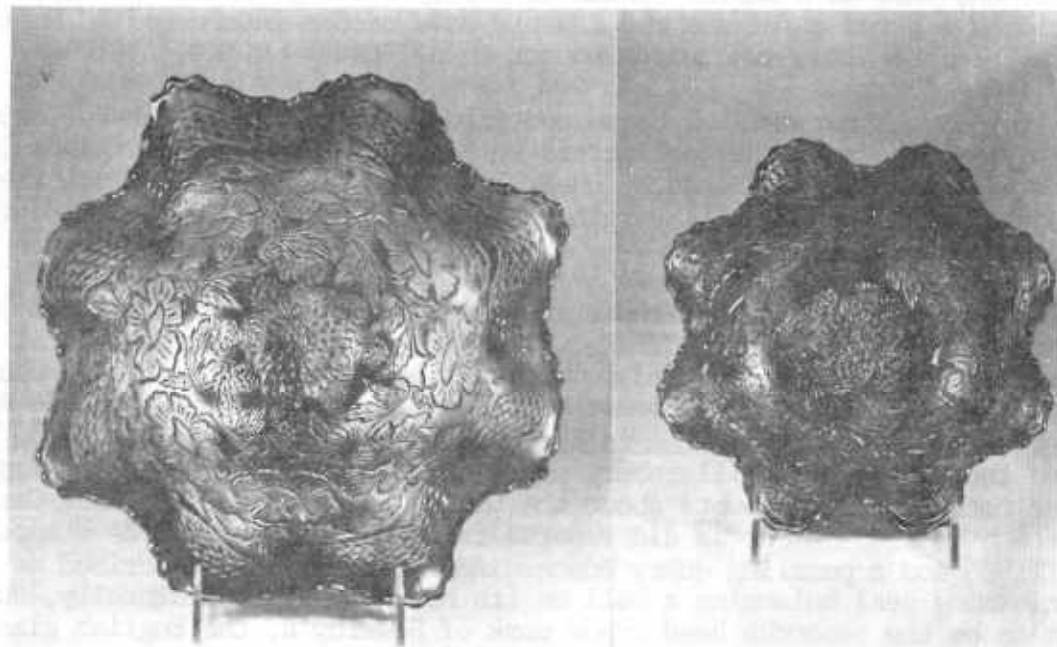
These little lamps have steadily advanced in price since I started collecting Carnival glass in the early 1970's. This is, of course, due to the great demand for them and their extremely limited supply. I purchased my purple one in 1971 for \$295.00 and bought two green ones for \$200.00 and \$250.00 respectively. No doubt they sold for much less than this back in the 1960's. They usually come up for sale only when some advanced collector decides to sell their Carnival glass collection. In the January 10th issue of Tri-State Trader I noticed a marigold one that was reported found tucked away in an attic in the state of Indiana. The Tri-State Trader reported the value at \$500.00. A few of the prices received for these pieces are listed below. In 1973 at the Presznick auction in Louisville, two of these lamps in purple sold for \$600.00 each. In the October 1978 Neal Markham auction two marigold lamps sold at \$575 each. The Corrothers just recently sold their purple lamps by private list for \$750.00 each. At the Sam Roebuck auction in March of 1980 the green brought \$600.00, the marigold \$675.00 and the purple for \$825.00. At the H.O.A.C.G.A. auction in April 1979 two purple sets, owned by Wilson Reed, sold for \$900.00 each. These prices reflect the great demand for these very desirable pieces of Carnival glass.

We might add here, that the H.O.A.C.G.A. has chosen this unusual and beautiful old Northwood creation as their 1981 souvenir. The Fenton Art Glass Company will be making the souvenirs for the club. Mr. Frank Fenton has given the club much help in the making of many of the clubs past souvenirs. The Robert Grissoms and the Byron Rineharts have done considerable work toward getting this all put together in order that the club might have this piece as their 1981 souvenir. It will be made in red and will carry the 1981 date, H.O.A.C.G.A. and the clubs GOOD LUCK and horseshoe logo. The club, rightfully so, is quite excited about this 1981 souvenir.

NOTE: The sketch shown of the candle lamp is from Mrs. Hartung's book # 9. We thank her for the use of this sketch which was used in this article.

Pictorial Pattern Parade
by John & Lucile Britt

Carnival Cameos by Don Moore



RED TWO FLOWERS BOWLS - This is quite a common bowl in marigold or blue. The spatula footed 8" bowl on the right is rare, but the 10½" ball footed bowl on the left is among the rarest of all red pieces. I have heard of only one other in this larger bowl, but even that has not been confirmed. The one shown here sold at the Roebuck auction in March of 1980 for \$900. The smaller bowl brought \$500 at the Legere auction four months later. With few exceptions, every color and shape in which the Two Flowers is found is also known in Stag and Holly. Since this large ball footed Two Flower has surfaced in red, there is no reason the same piece does not exist in Stag and Holly. To date, however, it is known in red only in the smaller spatula footed bowl.

HOW TO IDENTIFY THE ENGLISH MADE CARNIVAL IN YOUR COLLECTION

My grandfather was not much good at hoopla, so he never won any of the tall, shiney, orange-colored vases that I hoped he would whenever he took me to the fair as a child. Which is a pity because had he succeeded he would have saved a fortune and I would have become interested in English made Carnival Glass much, much sooner than I did.

In fact it was not until I began contributing articles to the Bulletin four years ago and other collectors in both North America and Australia started asking me all kinds of questions about pieces of Carnival they thought might be of English origin, that I began to dig and delve to find out more about it.

I too wanted to know about those treasures in my collection which I suspected were not American made. The pieces such as the Cathedral Chalice and My Lady's covered powder bowl, and some of the heavy, chunky items like the Moonprint biscuit barrel and the aptly named Classic Arts bowl. They did not have the feel of Fenton or the look of Northwood or have the finish of a Millersburg piece or the brilliant lustre of Imperial. More recent nagging doubts about the Diving Dolphins and the Rose Garden pattern spurred me on, as did reports from Australia of pieces stamped BRITISH, and a puzzling query concerning a maker's mark described as "A performing seal balancing a ball on its nose", which incidentally, turned out to be the peacocks head trade mark of Sowerby's, the English glass makers of Gateshead.

The answers to some of my queries came easily, from places such as London's incredible Victoria and Albert museum, from the pages of old copies of the glass supplement of the Pottery Trades Gazette, and yellowing, dog-eared price lists. But at the best of times research is not easy and seldom straight forward. It is not unusual to have to make five or six different inquiries at two or three different places to get one simple answer. What's more not everybody is ready or willing to co-operate, some are too busy, or too tired, or just cannot be bothered. And it certainly didn't help matters when I found out that the biggest and oldest of the English Carnival manufactures had ceased pressed glass production in the 1970's and that their huge glasshouse no longer makes motor car windscreens. All their old records and pattern books were nowhere to be found, nobody knew what had become of them, though it was suggested they had been lost during World War Two. That is more than likely as much of the industrial northeast of England, in and around Newcastle-upon-Tyne where the pressed glass makers had their factories, was often bombed between 1939 and 1945 and vital catalogues and other documents invaluable to my researches, were destroyed.

Fortunately many of the men who actually made much of the pressed glass in the big manufactories of Gateshead and Sunderland in the years between the wars, survived the bombing and were able to provide most of the answers to my many queries. These were men who in some cases had gone into the industry as boys and spent a lifetime turning out tons of Carnival. Often from original molds their fathers and grandfathers had handled before them.

As a result of almost two years of research, a great deal of information has come my way which I have put into a 52 page paperback book just published here in England. Besides being a general introduction to Carnival particularly for English collectors, this to my knowledge is the first book which attempts to identify the English made pieces, to recognize the various patterns and shapes and to attribute them to particular U.K. manufacturers. Apart from the words, there is more than a 100 very good photographs, black and white and color by Mr. Barry Warnes.

If you want to know more about those English made pieces of Carnival in your collection, may I suggest you get my book, which is published by my father, who is an author and a journalist with the London Sunday Times. If you want a copy send a bankers draft for \$6.00 which includes surface postage and handling, or \$7.00 to have it sent by AIR MAIL to Mr. JACK HALLAM, 82 CHART LANE, REIGATE, ENGLAND RH2 7EA. I hope you have as much enjoyment out of reading my little book as I got from putting it together.

Angela Hallam
Reigate, England

A NEW PRICE GUIDE

Sherman Hand and Charlotte Williams have a new price guide on the market. The guide may be obtained by sending \$5.95 to: Sherman Hand, 127 Olympic Circle, Vacaville, Ca., 95688 or Charlotte Williams, 630 N Lower Sacramento Road, Lodi, Calif., 95240.

Mrs. Viola Shikles, who has recently undergone major surgery is now back at home doing very well. According to her husband, Davis, she still has a little trouble getting around but is still extremely sound vocally, a matter which he has solved by retreating to the far reaches of their home. Get well soon Vi we all love you.

A LACK OF COMMUNICATION?

Sometime back we announced in the bulletin that we were going to edit or shorten the news of other clubs that we received for the bulletin. Please take note of the word shorten. Evidently the first notice was mistaken to the effect that we were completely eliminating the news from the other clubs. Nothing could be farther from the truth. The decision to shorten the correspondence was financially dictated. The cost to the H.O.A.C.G.A. for one page at 700 copies is approximately \$35.00 at the last estimate. It is somewhat higher now as we are now having printed 900 copies. We would like to hear from the other clubs as to what activities they are involved in and what future plans they have. So lets hear from you. I'm sure that there are many of us that would like to keep up on what's going on in your club.



FOR SALE

GERALD JENKINS, P.O. Box X, Salisbury, Md., 21801
PH: 301-749-1876, 301-546-3964

M GI	Mayflower pitcher & two tumblers	\$250.00
M EI	474, 7 piece water set	275.00
G EI	Imperial Grape 7 piece water set	225.00
G EI	Orange Tree loving cup	110.00
IG EI	Peacock plate (N)	160.00
A GI	Memphis punch cups	each 15.00
A EI	Singing Bird creamer	60.00
M EI	Grape & Gothic Arches pitcher & 2 tumblers	125.00
AO EI	Dandelion mug	350.00
AO EI	Rose Show bowl	350.00

GUY A. HULETT, P.O. Box 363, Antrim, N.H. 03440
PH: 603-588-6705 after 5 P.M.

DM EI	Fenton's Grape ftd. bowl, fluted small flake on 1 foot	\$15.00
P EI	(N) G/C flat bowl, 8½" dia. 2" high, ruffled	35.00
P EI	Northwood G/C pitcher	190.00

JOS. MELLO, 535 Fish Road, Tiverton, R.I., 02878
PH: 401-624-2174

M EI	Maple Leaf stemmed ice cream bowls, have 6	each \$12.00
M EI	Fentons G/C Orange bowl, Persian Medallion int.	70.00
M EI	Orange Tree 8½" collared bowl	25.00
M EI	Fenton Peacock & Grape	25.00
M EI	Holly panelled footed bon-bon (N)	30.00
M EI	Cherry 3 footed bowl (N)	35.00
B EI	Grape & Gothic Arches creamer	40.00
CB EI	Orange Tree wine	45.00
A EI	Cherry bowl footed	45.00
A EI	Stippled Rays bowl (N)	45.00

FOR SALE

CHESTER D. CRIPE, 288 Brush Road, Niles, Mich., 49120,
PH: 616-663-8289

M EI	Fisherman's mug	\$125.00
G EI	Whirling Leaves bowl	45.00
G EI	G/C stippled plate, Old Rose Distilling Co.	125.00
A EI	Beaded Shell tumbler	35.00
G GI	Double Star tumbler	25.00
M EI	Persian Garden 6' plate	25.00
M EI	10" ice cream bowl, Cosmos Variet	15.00
A GI	Swirled Hobnail rose bowl	150.00
PO EI	Ski-Star tri-shaped bowl, piecrust edge, a beauty	75.00
EI	Mlrsbg Cherry butterdish, P Bottom, G top or will buy piece to match	125.00

SINGLETON BAILEY, P.O. Box 95, Loris, S.C., 29569
PH: 803-756-7495 night, 803-756-4021 day

B EI	Peach tumbler	\$50.00
B EI	Butterfly & Fern tumbler 4 at	37.50
B EI	Maple Leaf & Acorn bowl	35.00
P EI	G/C cookie jar, nick on nob	200.00
P EI	G/C thumbprint berry set	195.00
G EI	Centerpiece bowl, unusual all points up, G/C	450.00
P EI	G/C dresser tray, tiny nick on base	125.00
P EI	Covered compote, open bubble, G/C	295.00
P EI	G/C ice cream bowl	195.00
P EI	Peacock at the Fountain punch set, 12 cups, bowl cracked	375.00

BETTY KLUTTS, 3800 NW 24, Oklahoma City, Ok., 73107
PH: 405-946-7497

SM	Acanthus 10" chop plate	\$145.00
DM	G/C 9" plate	85.00
P EI	Diamond & Sunburst wine decantur, original stopper four wines	315.00
P EI	S Repeat punch cup, shaped like a creamer	55.00

FOR SALE

JOHN STEWART, 99 Aster Circle, Weymouth, Mass., 02188
PH: 617-337-1304

P EI	Beaded Shell small footed bowl	\$35.00
M GI	Polo Pony ashtray	12.00
Y EI	Tall G/C tumbler	24.00
VS	Laurel Leaves deep compote	20.00
M EI	Lea creamer	18.00
M EI	Handled lemonade	18.00
M EI	Colonial goblet	14.00
M EI	Swirl lemonade tumbler	14.00
B EI	Peacock and Urn, compote, round edge	24.00
A EI	Peacock Tail ruffled flat bowl 7 1/4"	12.00

MRS. EARL E. SMITH, 3350 Sunnyside Dr., Boise, Idaho, 83709
PH: 208-362-9220

M GI	Cathedral Chalice, page 155 Klankin	\$135.00
CL EI	Frosted Block 9" plate, "Made in U.S.A."	48.00
YB EI	(N) Drapery candy dish, 4" high, 6 1/2" acrosss, cracked	50.00
DM EI	Diamond Lace bowl 8 1/2" beautiful	52.00
B EI	Blackberry Spray hat	45.00
IG EI	Stretch handleed basket	60.00
CL EI	Smooth Rib bowl	70.00
B EI	Two Flowers 10 1/2" bowl, replaced chip on under edge	75.00
DM EI	Tree Bark pitcher	75.00

NORMA MORRISON, 3912 Pennsylvania Ave., Eureka, Ca., 95501
PH: 707-443-1319

P EI	Three Fruits footed stippled bowl with ext. pattern	\$55.00
LM GI	Horses Head rose bowl	65.00
W EI	Apple Blossom Twigs ruffled plate	100.00
G LI	Loganberry vase, good color but not much irid.	125.00
B EI	Vintage 7" plate	40.00
P EI	Strawberry plate	80.00
B EI	Celeste blue Fenton #220 iced tea pitcher with cover and 4 handled tumblers, one has chip on inside	250.00

FOR SALE

HELEN NADEAU, 18 Thomas Olney Common, Providence, R.I. 02904
PH: 401-521-4581

A EI	Stippled Rays 9" bowl	\$33.00
A EI	Double Stem Rose bowl	45.00
G EI	N/G punch cups have 2	each 26.00
P EI	Scroll Embossed 9" plate	75.00
P EI	Leaf & Beads rose bowl ftd, int. pattern (N)	70.00
M EI	Dragon & Lotus 9" deep bowl	40.00
M EI	Butterfly & Berry sugar	45.00
M EI	Graceful vase	35.00
M EI	Vintage powder jar	38.00
M EI	Jack-in-the-Pulpit vase	25.00

M/M VERNON BELL JR., Rt. 2, Carrollton, Mo., 64633
PH: 816-542-1300

AO EI	Beaded Cable rose bowl	\$145.00
P EI	G/C footed bowl	45.00
B EI	Two Flowers 6" footed bowl, rare	45.00
M EI	Wishbone footed bowl (N)	50.00
M GI	Heavy Grape bowl	30.00
M EI	Horses Head bowl, Jack-in-the-Pulpit style	50.00
M EI	Little Fishes berry dish	45.00
P GI	Oriental Poppy tumbler	37.50
G EI	Tiger Lily tumbler	25.00
B EI	Stork & Rushes tumbler <i>Banded?</i>	27.50

M/M ARTHUR I. SMITH, 4535 Holder Court, Lakeland, Fla., 33803
PH: 813-644-4058

M EI	Windflower 7½" bowl, small base chip	\$20.00
M EI	Peacock Tail large compote	20.00
M EI	Blackberry Spray hat, have 2	each 25.00
M EI	Spider Web & Soda Gold 7½" bowl	50.00
M GI	Open Rose bowl 7½"	25.00

FOR SALE

LEE E. BRITX, Rt. 1, Hennessey, Ok. 73742
PH: 405-853-2276 after 5 P.M.

M EI	Waffle Block 7½" bowl	\$25.00
M EI	Wide Panel goblet, have 8	each 22.00
P EI	G/C breakfast sugar (N)	80.00
B EI	Peacock at the Fountain pitcher	290.00
M EI	474 punch cups, have 4	each 10.00
P EI	G/C hatpin holder, nicks on one foot	170.00
A EI	Beaded Cable rose bowl	50.00
G EI	Imperial Grape wine	28.00
M EI	Twins 6" bowl	10.00
M EI	G/C Ice Cream sherbert (N)	32.00

MRS. CLARENCE OSTERBUHR, 802 Hackberry, Garden City, Ks., 67846
PH: 316-275-5615

P EI	Fruits & Flowers bon-bon (N)	\$55.00
CB EI	Strawberry	30.00
G EI	Panelled Holly bon-bon (N)	45.00
A EI	Butterflies bon-bon	45.00
A EI	N's Butterfly	50.00
B EI	Persian Medallion bon-bon	45.00
A EI	Captive Rose	45.00
M EI	Vintage Banded cider pitcher, rare, few nicks	75.00
M EI	Banded Ribs pitcher	70.00
CB EI	Orange Tree large stemmed wine	45.00

CHARLOTTE TWEDDELL, 4908 Darnton Lane, Louisville, Ky., 40216
PH: 502-447-1670

A EI	G/C thumbprint water set, mint condition	\$650.00
PO EI	Stippled Leaf Rays bon-bon	30.00
M EI	Millersburg Cherry creamer, small nick ground off base	25.00
M EI	G/C Imperial tumblers, have 2	each 15.00
M EI	Spider Web & Soda Gold spitton	25.00
M EI	Autumn Acorn bowl	25.00
M EI	Millersburg Holly bowl	25.00
OMB EI	Pansy relish dish	30.00

WANTS

MRS. AUDREY POFFENBERGER, 2222A, Old National Pike, Middleton, Md. 21769
PH: 301-371-6710

P or A (N) G/C lid for cookie or cracker jar
M (N) Dandelion tumbler

LARRY KEIG, 510 King St., Fayette, La. 52142

P Broken Arches punch bowl, top only will consider slightly damaged
P (N) G/C powder box top
P Base for Vintage epergne
B Orange Tree powder box top
M G/C powder box top
A Fruits & Flowers master berry bowl (N), fiery amethyst
R Butterfly & Berry vase
M Imperial Grape wine decantur stopper
M Peacock at the Fountain spooner

DARCY P. HILL, 8461 Henna Ave. S., Cottage Grove, Minn., 55016

P G/C whiskey decantur stopper
P Imperial Grape wine decantur stopper

SINGLETON BAILEY, P.O. Box 95, Loris, S.C. 29569
PH: 803-756-7495 night, 756-4021 days

Any Color Big Fish bowls
Any Color Trout & Fly pieces
Any Color Millersburg Peacock pieces
Any Color mugs, one or collection

HAVE A FRIEND WHO COLLECTS CARNIVAL BUT IS NOT A MEMBER? OR MAYBE SOMEONE YOU HAPPEN TO MEET AT A SALE, SHOW OR AUCTION. BE AN ACTIVE MEMBER AND HELP YOUR CLUB GROW AND GIVE THEM THIS APPLICATION. TEAR THIS PAGE OUT AND PUT IT IN YOUR BILLFOLD OR PURSE SO YOU WILL HAVE IT WITH YOU WHEN THE OCCASION ARISES.

APPLICATION FOR MEMBERSHIP
HEART OF AMERICA CARNIVAL GLASS ASSOCIATION

DATE: _____

NAME: _____
SPOUSE: _____
ADDRESS: _____
CITY: _____ STATE: _____ ZIP CODE: _____
TELEPHONE: _____

YES _____ NO _____

Do you want your name in the directory?
DUES: \$10.00 per year — **June to June** — Couple or Single membership.
Monthly News Bulletin — Educational Articles

SEND DUES TO: H.O.A.C.G.A.
Lucile Britt
3048 Tamarak Drive
Manhattan, Kansas 66502
913-539-1933

Recommended by _____