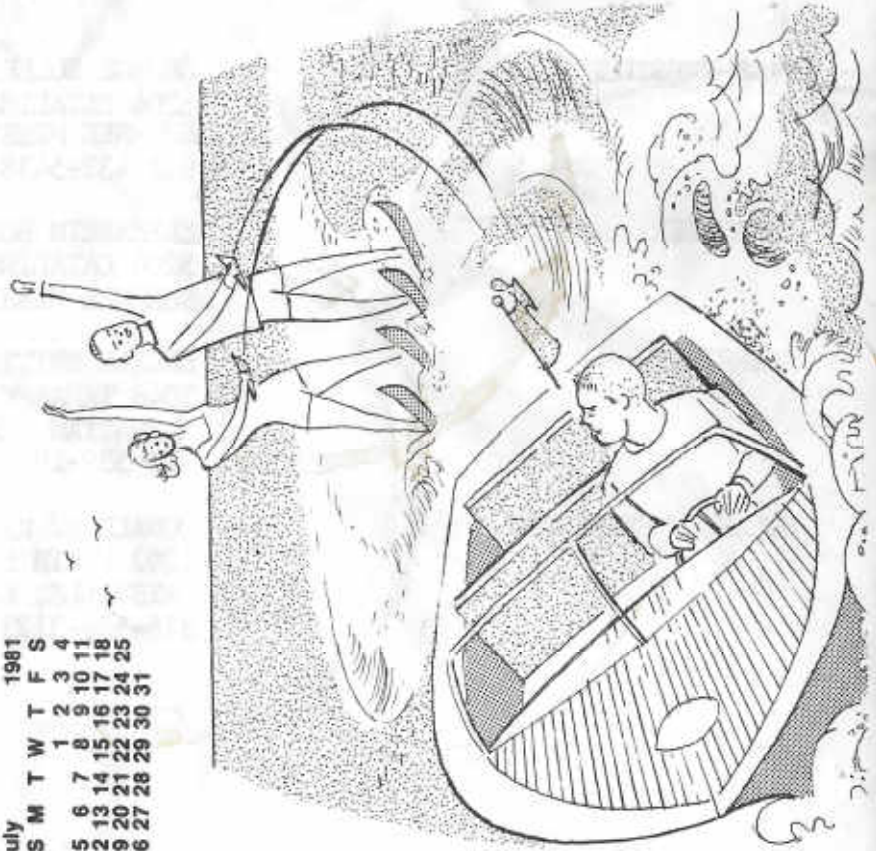


H. O. A. C. G. A.
DONALD E. KIME
BULLETIN SECRETARY
1202 W. 4th ST.
HAYSVILLE, KANSAS 67060

July 1981
S M T W T F S
5 6 7 8 9 10 11
2 13 14 15 16 17 18
9 20 21 22 23 24 25
16 27 28 29 30 31



FIRST CLASS





Heart of America Carnival Glass Association, INC.

**MEMBERSHIP JUNE TO JUNE
\$10.00 PER COUPLE OR SINGLE**

**PUBLISHED 15th OF
EACH MONTH**

PRESIDENT: GEORGE O. MCGREW JR.
6800 WOODWARD
OVERLAND PARK, KANSAS 66204
913-262-8822

VICE PRESIDENT: GEORGE BOLLES
5204 CATALINA
SHAWNEE MISSION, KANSAS 66205
913-432-5438

TREASURER: ELIZABETH BOLLES
5204 CATALINA
SHAWNEE MISSION, KANSAS 66205

SECRETARY: LUCILE BRITT
3048 TAMARAK DRIVE
MANHATTAN, KANSAS 66502
913-539-1933

BULLETIN SECRETARY: DONALD E. KIME
1202 W 4TH ST.
HAYSVILLE, KANSAS 67060
316-524-3123

THE MAY MEETING OF H.O.A.C.G.A.

The H.O.A.C.G.A. meeting was called to order by our President George McGrew, at 2 P.M., at the Holiday Inn, Mission-Overland Park, Ks. We had a very good turnout with some members who attended our regular meeting for the first time. They were Helen Wagner of Mo., Mr. and Mrs. Vaughn of Ks., Mr. and Mrs. Bill Treff of Ks., and Tom Burns of New York.

The Secretary Lucile Britt read the minutes of the May meeting. Mrs. Bolles said there should be a correction of the refund amount from Fenton Glass Co. and it should be \$1326.60. The minutes were then approved.

Treasurer Elizabeth Bolles gave her report as follows:

Balance on hand 5/21/81	\$10,881.53
Receipts:	7,118.74
Expenses	1,624.86
Balance on hand 6/26/81	\$16,375.47

This report was placed on file for audit.

Robert Grissom reported that Mosser will be making our mugs to cover our shortage in 3 to 4 weeks and will make 75. He also reported on the color separation prints and was advised to go ahead and pick them up.

Mr. Grissom also reported that Fenton Art Glass Company has the molds for the Hat Pin Holder, Candle Lamp and Shade and Loving Cup. Robert Grissom has the mold for the Corn Vase. Mosser has the Little mug mold. Cooley Miller reported that he does not know where the hat pin mold is. Bob also reported that he had destroyed the 50 Hat Pin Holders that were defective.

Mr. Grissom reported that Ward Benson has sent him a box of the tops out of the lamp shades that he has polished the edges. We discussed making pins and bolos out of them. They have the Horseshoe in the center.

For the notebook fillers next year they will be on pitchers.

President McGrew appointed Cooley Miller to be our souvenir chairman for the 1982 souvenir. A few of the suggestions made were pipe humidor, cracker jar, fine cut and roses rose bowl, wishbone epergne and sweet-meat.

Lucile Britt made a motion to sell our display case. Don Kime seconded the motion. It carried.

Robert Grissom made a motion to sell the display case for \$250.00. Roland Kuhn seconded the motion. It carried.

Our condolences go to Sam Roebuck on the death of Carrie, his wife. A speedy recovery to Herbert Treff and Mrs. Wasson following surgery.

George McGrew reported that he talked to Tony at the Holiday Inn about any remodeling so they can accomodate our banquet in a room next year. We should know in a few weeks what their decision will be. We have a hold on the motel until August 15.

George McGrew announced that Bill Heacock will be our banquet speaker in 1982.

The President appointed Vi Shikles as refreshment chairman for the year.

The July meeting will be our picnic and it will be held at the Raytown shelter house. A map and directions will be in this bulletin.

Rosa Grissom moved we adjourn. It was seconded by Marge Miller.

H.O.A.C.G.A. SOUVENIR SHOW CASE FOR SALE

For those of you who have attended our conventions no doubt have noticed the show case at the entrance of the Motel each year. We have displayed our souvenirs there for everyone to enjoy as well as past years souvenirs.

The case is for sale. It is 5 feet long, 18 inches wide and stands 54 inches high. It is made of good wood, lots of display area, an adjustable shelf, well lighted and can be locked. It has storage space on the bottom which also can be locked. The best part we saved for last. The price is only \$250.00. For a case this size with all the extras the price can not be matched. If you are interested or know of someone who is, please contact Mr. Cooley Miller, PH 816-741-4635.

1981 SOUVENIR CANDLE LAMP

Have you ordered your 1981 Souvenir Grape & Cable Candle Lamp? There are only about 100 lamps left and the orders are continuing to come in so don't be one of those members who put off ordering one until they are all gone.

This souvenir is probably the most attractive souvenir that H.O.A.C.G.A. has made.

Several members continue to inquire as to how the shade, metal shade holder, and candle stick are held together. Remember, this is a candle lamp. You will need a 6" tapered candle forced into the metal shade holder: then cut the candle off about 1/2 inch below the shade holder so it will fit into the candle stick: then place the shade on the shade holder; then place the shade and shade holder with the candle on the candlestick.

This is the same method that was used for the old candle lamp. As far as we know, there is not a standard size candle to fit the shade holder.'

Use the Order Form included in this bulletin and order your Candle Lamp NOW while you have everything before you.

Lucile Britt, Secretary



George McGrew, President

WATER SET - NOTEBOOK INFORMATION

The next section of the H.O.A.C.G.A. notebook will be on Water Sets. We will try to show a pitcher with a tumbler.

Work has already begun on this part of the notebook for 1982. As most of you know there are many different patterns and colors of Water Sets.

Some members have already called or written and offered their help on this project. In order to assure that all patterns and colors are identified, I will need the knowledge and input from many members.

I have put together a listing of Water Set patterns from information I have available but, I am sure that many more patterns exist. If any member is willing to help with the identification of patterns and colors, please call or write and I will send you a list which you can add your information. The more members we have making inputs, the more complete the notebook information will be.

In this Water Set information, we will be including the Painted or Enameled sets also.

GOOD LUCK
ROBERT L. GRISSOM
7900 Crescent St.
Raytown, Mo. 64138
816-356-5320

A REMINDER

Please remember when you send in your wants and for sale items that you only list one color or piece per line. From time to time you have seen alot of colors for instance on one line. We want you to write in your wants and for sales but do limit it to only ten (10) items each. For example: IG EI dancing Bears pitcher and 10 tumblers, not IG W P R W PO dancing Bears pitcher and 10 tumblers.

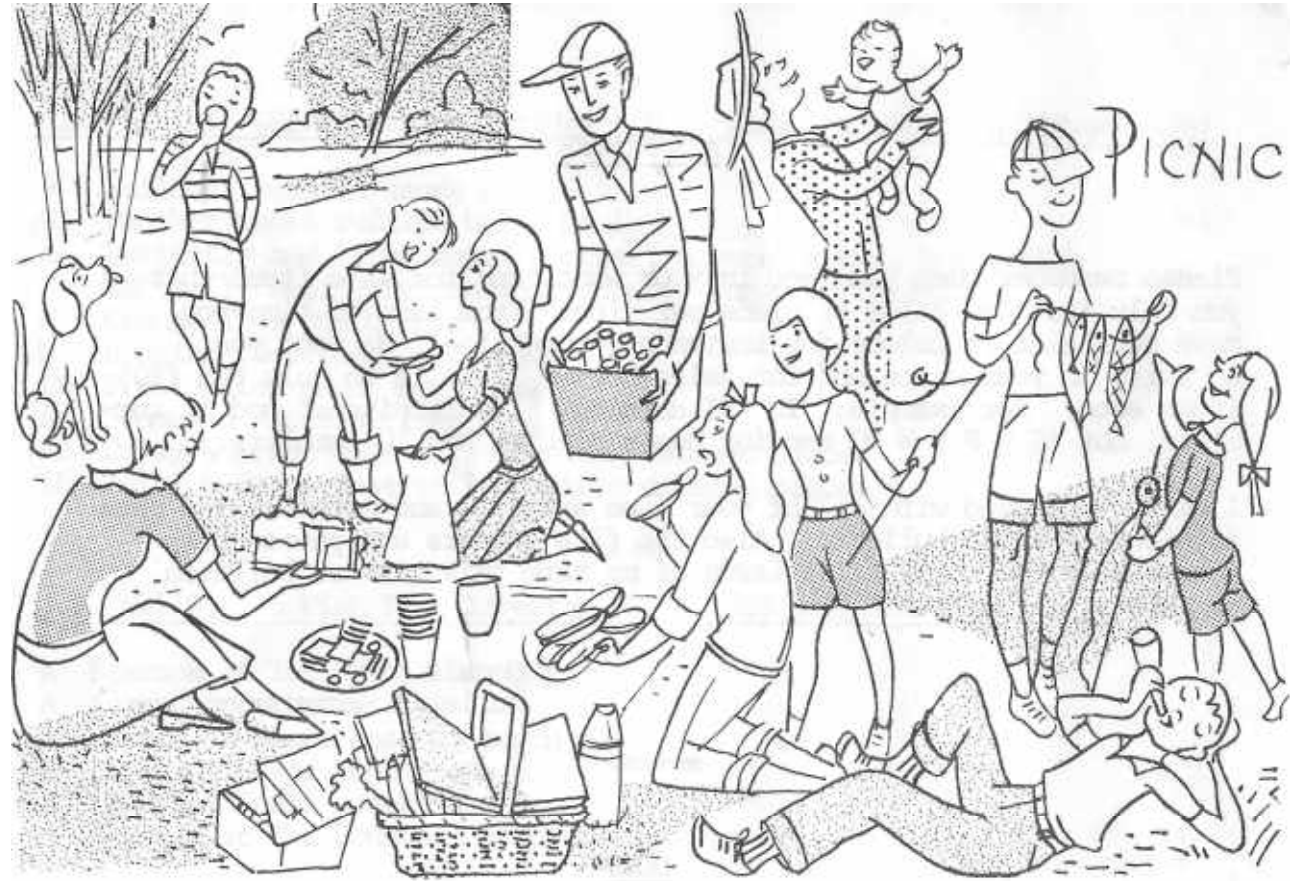
I am very pleased with all of your fine articles and material you have furnished for the bulletin. Also the fine letters and phone calls I have received on my first issue of my term this time as bulletin secretary.

Donald Kime
Bulletin Secretary

DUES

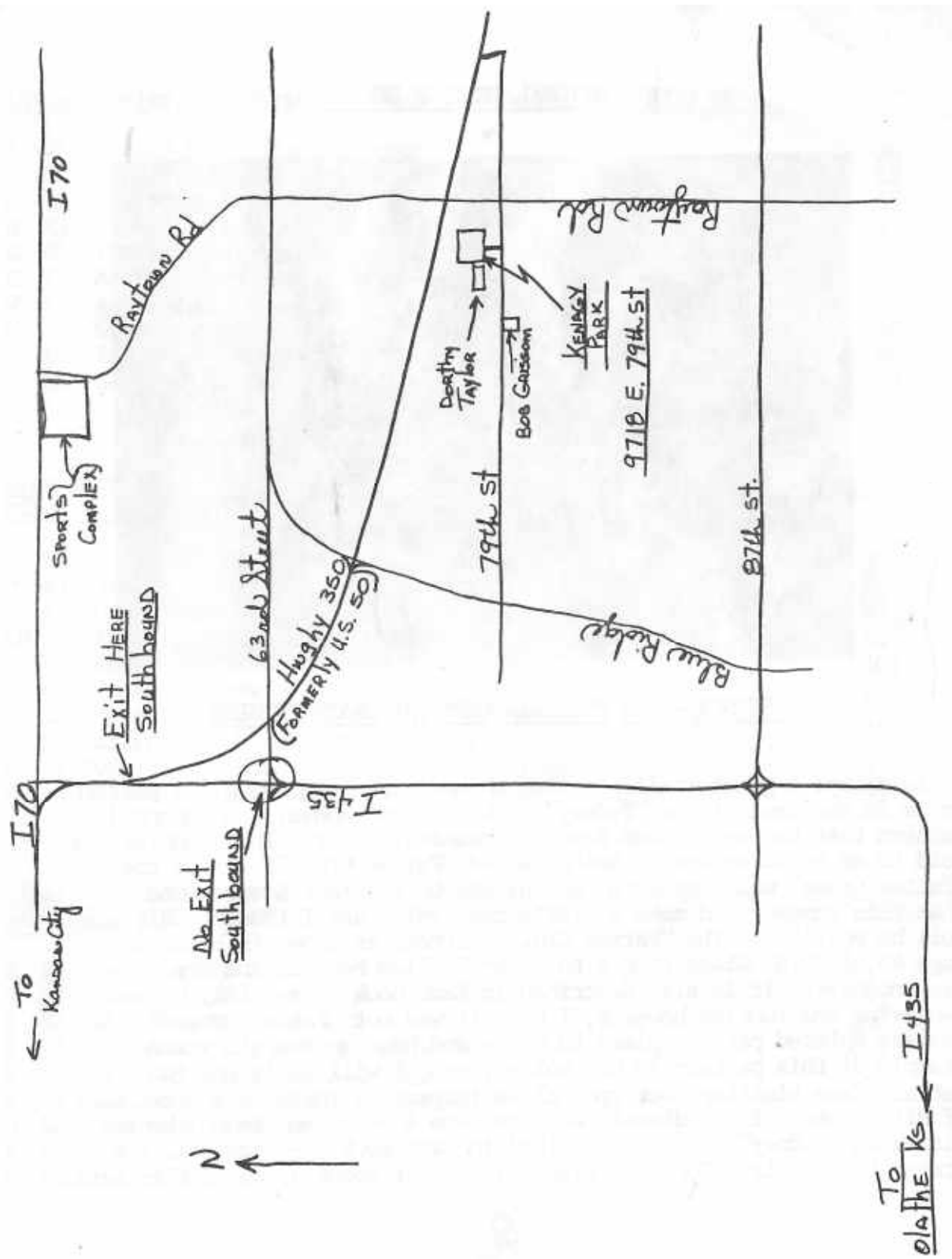
Please send in your dues for 1981-82. Soon we will be taking all names off the mailing list who have not paid their dues. Postage is so high we will have to cut everyone who has not paid their dues by the cut off date. The dues are TEN DOLLARS, \$10.00, the same as last year. Please remit to the Secretary, Lucile Britt, 3048 Tamarak Drive, Manhattan, Kansas 66502 as soon as possible. We do not want you to miss out on your bulletins and I am sure you do not want to either.

Herb Treff and Mrs. B. L. Wasson have both recently had surgery and we wish them a speedy recovery. At last report both coming along fine and we hope to see you at our July picnic and meeting.



JULY MEETING AND ANNUAL PICNIC

Our July meeting and annual picnic will be at Kenagy Park, 9700 E. 79th Street, Raytown, Missouri. The following page is a map for all to follow so we will look for all of you to come share a good time and partake of some wonderful food. The club furnishes the meat and drink. All are asked to bring a covered dish and your own table service. This is an important meeting as at this time we select our souvenir. We hope to see all of you out on July 26, 1230 P.M. for a fun time.



EDUCATIONAL TUMBLER SERIES



SYDNEY --- A FOSTORIA CARNIVAL GLASS TUMBLER

It is always a great thrill to find an unlisted carnival glass pattern, or as in the case of the "Sydney" tumbler shown above, a documented pattern that has never been found in carnival glass. This tumbler was sold to me by telephone as being called "Pattee Cross". Since the "Pattee Cross" was a pattern made by the U. S. Glass Company and that this company did make a little carnival glass, I thought this could well be possible. (The "Pattee Cross" pattern is shown in color on page 43 of "U.S. Glass from A to Z" by William Heacock and Fred Bickenhauser. It is also described in Kamm book 2-page 121). Upon receiving the tumbler however, I knew it was not "Pattee Crosse". We collect colored pattern glass tumblers and have an emerald green example of this pattern in our collection. I will admit the two patterns are similiar, but upon close inspection there is a great deal of difference. I immediately went to Kamm's books and found the pattern listed as "Sydney". It is described in Kamm book 7 - page 38. She states that it is a Fostoria Glass pattern of about 1905. I then went

to my Fostoria book called "Fostoria - its first Fifty Years" by Hazel Marie Weatherman. This is an outstanding book on Fostoria glass patterns. On page 41, she covers a full page of pictures of this pattern taken from old catalog reprints. Most carnival glass collectors think of the Fostoria Glass Company as being the producer of much of the iridised acid cut back or plate etched type of glass such as "Brocaded Acorns". (See Hartung book 7 page 120 for description of this pattern). A great many of these brocaded pieces can also be found in Weathermans book on Fostoria glass. These patterns were made with and without iridescence. Many collectors refer to the "Brocaded Acorns" as "Oak Leaf", since this was Fostoria's original name for it. This etched cut type of glass was made in a number of patterns and colors and in many different pieces. It is highly collectible today.

In addition to the "Sydney" pattern tumblers, that we feature this month, there are at least two other Fostoria tumblers that are known in carnival glass. They are the popular "American" pattern that has been found in several different pieces with iridescence, and the very rare "Chain & Star" tumbler which is described and shown in Hartung's book #10 page 109. This rare tumbler is not listed in the carnival glass tumbler book by Richard Owens. In an old Fostoria catalog, this pattern was originally called their No. 1467 or Virginia pattern. More on these two tumblers in later articles.

The "Sydney" tumbler that we feature this month is of standard size, being just under four inches high. It is a sort of amberish honey color with excellent iridescence. The four large well raised ellipses that form the cross on four sides of the tumbler are also impressed into the underside of its ground base. We consider the "Sydney" tumbler as rare in carnival glass, very desirable, and a fine addition to any collection. This is # 42 in this series on carnival glass tumblers. Next month we will feature the "Lily-of-the-Valley", a rare and highly sought after tumbler that was made by the Fenton Art Glass Company of Williamstown, West Virginia.

John & Lucile Britt



RARE MARY ANN LOVING CUP

This unusual three handled loving cup, that is pictured above, is considered quite rare. It is unique in that it has three handles, instead of the two that are found on the vase. Note the third handle that extends out to the front. While the two handled vase is not too difficult to find, very few of these "Mary Ann" loving cups are known by collectors around the country. Mr. & Mrs. Merwyn Larson of Iowa are the proud owners of this very fine piece of carnival glass.

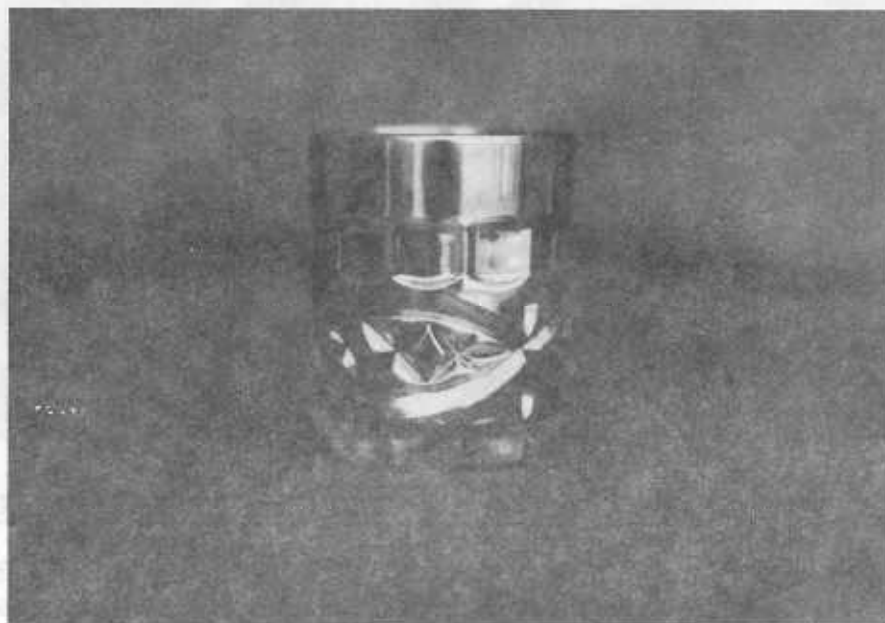


MARY ANN VASE (two handles) & LOVING CUP WITH THREE HANDLES

While this pretty "Fancy Flower" design is the same on both of these "Mary Ann" pieces, there are several differences in the way in which they were made. Note the scalloped edges on the top and bottom of the vase, while the loving cup edges are completely smooth. The handles on both were made exactly the same. The more common "Mary Ann" vase can also be found in amethyst in addition to the marigold shown here, but it is much harder to find in that color. The loving cup has been reported only in marigold. Some think these pieces were made by the Imperial Glass Company of Belaire, Ohio. I can find no data to support this theory, and the "Mary Ann" pattern has not shown up in any of the old Imperial catalogs in which I have seen. It has been reported that a blue opalescent "Mary Ann" vase is known to exist in non-iridised opalescent glass. It just might be possible that these pieces were made at the old Northwood-Dugan-Diamond factory at Indiana, Pennsylvania.

Pictorial Pattern Parade
by John & Lucile Britt

HELP NEEDED



A NORTHWOOD FIND

From very personal experience, I know that no one ever knows all there is to be known about Carnival Glass. Our study and research of this one type of beautiful glass has been a continuing process for over thirty years, and still there are new facts to be uncovered, new corners to be turned. We hope this may always be so.

We have had a Carnival shop for nineteen years-handling only old glass. Collectors from all corners of the country have passed through, much to our delight as often they bring pieces to be studied or identified, and often we both learn from the exchange.

However, one episode comes to mind illustrating that one can never take another's knowledge for granted. Recently two collectors came in. One immediately pounced upon a purple Northwood Grape water pitcher-held it at arm's length-and asked, "Did Fenton make this?" Happily, she bought several books on patterns on Carnival before she left.

Can anyone help us with the name of the above pattern? Bernie McCormick of Cordell, Oklahoma recently found this pretty tumbler and would appreciate any information as to the pattern name, maker and age of the piece. The tumbler is a very rich marigold with outstanding iridescence. It is 3 1/2 inches tall. It has a 2 7/8 inch top diameter. There is a 12 pointed rayed star pressed into the bottom of the base. If you have any information regarding this pattern, please contact the writers or the H.O.A.C.G.A. bulletin editor and we will pass the information on to all our members.

Pictorial Pattern Parade
John & Lucile Britt

All things are possible, so they say, and the piece of iridescent glass shown in this article may be "old hat" to someone. But to me it is a tremendous find that should be shared.

My research has covered many types of American pressed glass-custard among them so the base glass here was quite familiar. The pattern being Northwood Grape was also well known. The two qualities added together posed no problem.

The shape varied slightly from anything seen, but is more like the Carnival centerpiece bowl than any other. The main difference is that the rim here is perfectly smooth-and does not have the big flutes of the Carnival piece. We see these flutes either standing straight up or evenly rolled in. Here the rim rolls in very slightly and is almost vertical. On this custard bowl there is a band of gold trim about 3/4" wide around and over the edge.

Added to these two features of glass and shape is a pastel rainbow iridescence and lustre. This places it in the category of "Pearl" Carnival. Many collectors have never seen this beautiful combination. Probably the most widely known example is the custard tumbler in "Grape and Gothic Arches", which is almost always circle-signed and has a band of gold around the rim and occasionally on the fruit as well.

This centerpiece bowl carries the famous underlined "N-in-a-circle" on the center interior. The color of the glass is not a garish yellow, but is of a soft creamy hue. The pastel iridescence is particularly beautiful on the inside, and reminds one of the inner surface of a sea-shell.

The glass is of a rather heavy weight and it stands just over six and one-half inches tall, it measures nine and one-half inches across the rounded center, and cups in to eight and one-half inches at the top. As the picture shows, there is no nutmeg or pink stain. The interior is smooth. The grapes are of solid glass and both they and the leaves stand out strikingly from their smooth background.

Northwood began making custard glass in the mid 1880's and made at least ten patterns in this type of glass. As shown in our book on Northwood pattern glass.

Some of these-such as "Chrysanthemum Sprig" and "Argonaut Shell" can be found marked with the name "Northwood" written out in script and underlined. Others, such as the "Grape and Gothic Arches" are simply circle-signed. Trade-marks on glass became more widely used after 1903, and variations of the N marking are well-known from 1905 on.

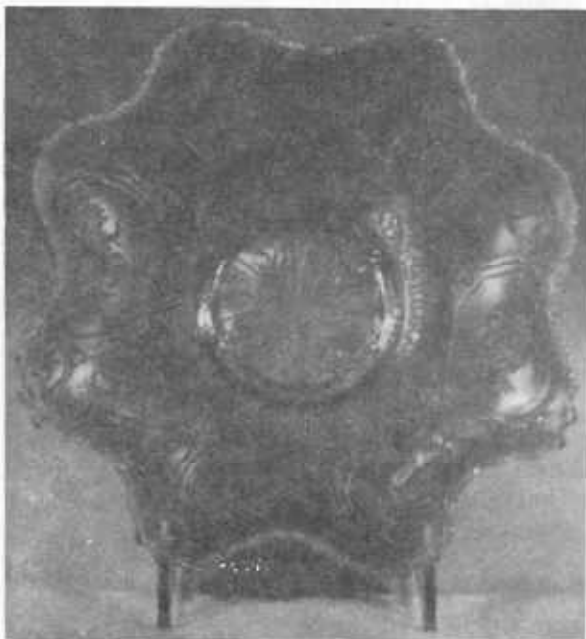
It has been suggested that this particular bowl was an "experimental piece". No one can say that with certainty, but the bowl has been used-there are some marks of wear on one side of the bottom of the interior, and the gold trim also shows some wear. There are no flakes or chips, so it was well cared for.

But this is one to hunt for-a truly beautiful piece of "Pearl", and we feel most fortunate to have been able to add it to our small collection. As with the Aqua-Opal Acorn Burrs punch set we found several years ago, this also came from the New England area.

We should be very pleased to hear from other collectors who have this N / Grape pattern on custard with Pearlized finish, on any shape.

Marion T. Hartung

Carnival Cameos by Don Moore



ICE GREEN OPAL - This rare color is often referred to as Lime Opal. I have often wondered if this color was intentional, or if it resulted from an "offbeat mixture" that was intended to be aqua opal, vaseline opal, blue opal, or some other opalescent variation. If you have seen the new Carnival in aqua opal, you have observed the great variation in coloring, even in spite of our modern quality controls.

In addition to the Dragon and Lotus on the left above and the Strawberry bon-bon on the right, this coloring has also been confirmed on a Rose Show plate, N Basket, Nippon bowl, Rustic vase, and Water Lily 5" bowl. I'm sure a number of other pieces are also out there someplace.

MILLERSBURG NOTES #2

BIG FISH

Rarer in all colors than its companion design, the Trout and Fly, this outstanding Millersburg bowl design is a real beauty.

The diameter may vary from 7 5/8" to 8 1/2" depending on the depth, but all Big Fish are smaller than Trout and Fly bowls.

Colors are green, marigold and amethyst, usually with radium finish, but satin finish examples are known. The green seems to be a bit easier to find, but all colors are scarce and much sought. I've heard of one very rare example in vaseline.

Shapes I've heard about are round, square, tri-cornered, tightly ruffled with the usual number of ruffles being 18, a six-ruffle crimped (a typical Millersburg style crimp) and the very rare banana bowl shape.

The exterior features typical wide panel design and the base has a 25 point multi-rayed design. aside from the size and the absence of a fly, the design differences from the Trout and Fly are (1) sharper mold detail, (2) two added water lily designs below the fish on either side, (3) much greater detail on the fish itself, including eye detail and especially scaling.

In addition, the quality of glass found on the Big Fish is usually superior to that of the Trout and Fly, indicating it came along later in the Millersburg time table, and while both bring top prices and are highly sought, the Big Fish should sell for more. Unfortunately this is not always the case, but perhaps the value of the Millersburg Big Fish will eventually be realized by collectors, for it is one of the premier bowl shapes in all of carnival glass.

Bill Edwards
Indiana

KITTEN CARNIVAL

To me kittens are so cuddly and lovable I want to grab up every one I see and give it a big hug. Now that we live in a neighborhood with homes so close together it does not seem to friendly to have a cat maybe digging in the lawn or next door garden flower beds. Not everyone agrees that cats are the most desirable pets in all the world but there is no doubt they are loved by a large majority. Through the years we have met some of the nicest "cat" people. One always feels a close kinship to anyone who shares the same views or interests we do.

When we started collecting carnival years ago and I heard about some with kittens on it of course I wanted one. Well, like it usually happens with a cat family they do multiply and first thing we knew our kitten carnival turned out in all shapes and even shades of colors. We have several cups and saucers, cereal bowls, bowls or fluted dishes turned up on only two sides like a banana boat to six of flutes for some. We have only one true plate. They are a bit flatter in center than the saucers. We have several tooth pick holder shaped pieces and two can be classed as vases. The patterns are so stretched out on these that they're barely recognizable. I am not to happy with the stretched out ones as they somehow make me think the poor kittens have been hung and I don't like that.

The cobalt color is the hardest to get. I guess the marigold color proved more popular for little girls tea sets which was what they were originally made for by the Fenton Art Glass Co. We have one perfectly clear glass ruffled low bowl and heard of a clear cup and saucer. We would doubt the company ever made sets in the clear glass or surely there would be more of them around. Once we were told by a dealer she had sold a kitten tea pot but to our knowledge none has ever been found.

Several years ago a lady brought the cutest little cuspidor shaped kitten piece to a convention. That little thing created a great stir in the carnival world. She wouldn't sell but a couple years later another whimsey cuspidor turned up and we were fortunate to get it. Both were in the marigold color. Can you ever believe the same lady who found the first one found another rare one in the cobalt? Talk about luck-that has to be it. One wonders just what glass maker decided to make a whimsey piece to take home? We feel sure he loved cats too and wanted a special item as a souvenir of his work.

We almost wish more would have done this but then if they had it wouldn't be the rarity it is.

We are quite fond of our "Carnival Cats". We have taken them to four conventions in displays and it was nice to have others enjoy them too. We like to think the kittens loved all the attention and want to go again. Well maybe one of these days.

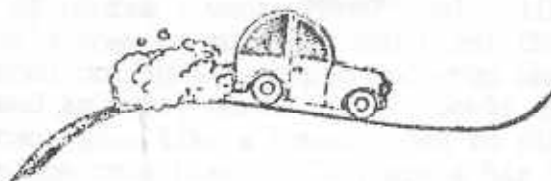
Grace & Byron Rinehart
West Virginia



DATES TO REMEMBER

International Carnival Glass Convention-August 6, 7, 8, 1981,
La Crosse Holiday Inn, La Crosse, Wisconsin

Pacific Northwest Carnival Convention-August 13, 14, 15, 1981
Thunderbird Inn, Kelso, Washington. Guest Speaker Mr. Don Moore.



NEW MEMBERS

M/M Stephen Mesko, Pennsylvania
M/M Edward Koenig, Georgia
M/M Gary Posey, Washington
M/M Charles Berberick, Missouri
M/M Kenneth Rowland, Arizona
M/M Gerald Sappington, South Carolina
M/M David Morris, New Jersey
Mary Kesterson, Texas
M/M Stewart Mills, Missouri
M/M John Pikulinski, New York
Byron Davidson, Missouri
M/M Dwight Wilmoth, Missouri
Burney Talley, New Mexico



TOM BURNS SALE MAY 29 & 30 , Bath New York

The Burns sale was well attended with a good crowd of carnival collectors. As most of us know rare pieces continue to bring the better prices. The common pieces still hold their own with a few bringing a few dollars more. As you can see the opal and pastel colors are really the ones that are in demand and continue to keep going up in price.

IG Peacock at Fountain compote 450
G Horse Medallion ftd bowl 130
P G/C cologne w stopper 225
W N bushel basket 150
P G/C hatpin holder 160
W G/C centerpiece bowl 400
Teal blue Leaf & Beads rose bowl 140
AO Leaf & Beads rose bowl 200
AO Acorn Burr punch cup 400
AO Three Fruits ftd bowl 240
AO Dandelion mug flake 385
B Butterfly & Berry hat pin holder 525
A Checkerboard goblet 225
Aqua base Kittens 6 sided bowl 400
R Stag & Holly ftd bowl 900
A Square Butterfly & Tulip bowl 1350
AO Rose Show bowl 325
AO Thin Rib vase 700
M Checkerboard tumbler 550
IG Basket 8 sides N 225

The notebook fillers for H.O.A.C.G.A. are super. I see by the bulletin that next years is water sets. I have over 40 pitchers and also have 2 unlisted pitchers. If I could help you with photos or anything else, please let me know.

Keep up the fantastic work. It is much appreciated.

Lee Briix
Oklahoma

QUESTION? PERHAPS YOU HAVE AN ANSWER

I have a question directed to anyone who Knows Why?

WHY, do all the books on American Glass skip over the Carnival Glass Period? They speak of the Press Glass Period and then skip over to the Depression Period. Why is the Carnival Glass Period not recognized or even discussed in books other than the Carnival Glass Books?

I would appreciate greatly if someone could answer this-it really bothers me.

Mrs. D. Daney
1884 Filmore Ave.
New Orleans, La 70122

Dear Carnival Glass Friends;

We enjoyed attending your club meeting in May while we were weekend guests of Marge & Cooley Miller.

Everyone was so friendly and made us feel welcome. Marge and Cooley and their friends all showed us a very nice holiday.

We want you to know that all of you are welcome in our home anytime you are in St. Louis.

Al & Lorene Sebaugh
Missouri



Many people have asked about Leonard Harsch. On Thursday June 11, I visited Leonard at his home in Bartley, Nebraska. Leonard will be 83 August 20th. Leonard would like to have attended the H.O.A.C.G.A. convention and also carnival glass auctions, but he said he has to stay close to his doctor.

Cooley Miller
Missouri

POLICY FOR ADVERTISING IN H.O.A.C.G.A. BULLETIN

We repeat the guide lines set up in years past for the benefit of the new members and as a reminder to all. Member families may advertise ten (10) FOR SALE and ten (10) WANT ads each month free of charge.

All advertisements, announcements, letters or any other item to be printed, must be received by the Bulletin Secretary by the 1st of the month to insure being published the month received.

1. In the absence of any chips or cracks being noted the piece will be considered perfect.
2. A 5 day return privilege at buyer's expense providing it is not as advertised.
3. All postage and insurance extra.
4. All for sale items must be priced - no bid items will be published.
5. The H.O.A.C.G.A. and paper do not accept any responsibility for items bought or sold thru this paper.
6. Marked Northwood pieces - please use (N).
7. Only OLD CARNIVAL GLASS items will be published.- The only new Carnival items accepted are the H.O.A.C.G.A. souvenir items.

For accuracy of description, the following is recommended:

A - Amethyst	PM - Pastel Marigold
P - Purple	R - Red
G - Green	C - Clear
B - Blue	IG - Ice Green
CB - Cobalt Blue	IB - Ice Blue
M - Marigold	AMB - Amber
PO - Peach Opalescent	S - Smoky
AO - Aqua Opalescent	W - White

EI - Excellent Iridescence	L - before color means light
GI - Good Iridescence	D - before color means dark

EXAMPLES: LM EI Brooklyn Bridge bowl \$250.00
 DP EI Good Luck bowl (N) small base chip 75.00

It would be appreciated if you will please use these codes suggested, it will be less confusing to everyone and also be helpful in the typing and set up of the bulletin.

FOR SALE

Omer E. Sweeney, 28 Esmond St., Esmond, R. I. 02917 PH 401-231-4108

M	Memphis master berry	105
M	Zipper Loop lamp, lge size	350
M	Weeping Cherry bowl	90
G	Springtime spooner	125
G	Persian Medallion bowl	50
G	Sunflower bowl	50
G	Singing Birds tumbler 6 ea	40
B	Fentonia Fruit cherry & Scale master berry	150
B	Fentonia 5 1/2 bowl	50
R	Colonial tankard stretch tumbler	230

Mike Bevill, 48528 Hawk, Selfridge A.N.G. Base, Mi 48045 PH 313-949-4766

H	EI Heavy Grape chop plate	260
G	EI Butterfly & Berry tumbler	80
G	EI Butterfly & Berry small berry bowl	55
R	EI H.O.A.C.G.A. corn vase	60
R	EI H.O.A.C.G.A. loving cup	60
R	EI H.O.A.C.G.A. whiskey decanter	150
P	EI G/C sweetmeat top chip edge	22
HG	EI N Bushel basket slight opal small crack on side	42.50
M	GI Studs tumbler	4

SASE two stamps for log carnival listing dated June 1 1981

Betty Moyer, Rt 3, General Delivery, Nimitz, W. V. 25978 PH 304-466-4524 after 7 PM SASE for list

M	EI Orange Tree powder jar and cover	70
M	EI Orange Tree hat pin holder	225
PO	EI Dogwood Sprays bowl dome base	50
LM	EI Stag and Holly bowl 11"	95
P	EI G/C banana dish	250
W	EI Constellation compote	80
G	EI 3" Buzz Saw cruet no stopper	300
DM	EI Kitten banana dish	115

IG EI	Peacock At Fountain compote scarce	550
G EI	Peacock And Urn Giant compote Millersburg	650

Geo H. Loescher, 2420 Park Ave., Beloit, Wi 53511 PH 608-362-3104

A EI	Poppy Show plate	300
B EI	Rose Show plate	300
G EI	G/C Hat pin holder	160
P EI	Corn Vase	300
G EI	Millersburg Swan bowl radium	195
M EI	Town Pump	900
M EI	O. T. bowl	35
M GI	Polo ash tray	18
AO EI	Dandelion mug 2 base nicks	250
A EI	Millersburg Swan bowl radium	275

Rick Kojis, 2020 South 80 Street, West Allis, Wi 53219 PH 414-327-0321
after 4 PM

P EI	Three Row vase cracked Rare	35
M EI	Persian Medallion hair receiver	35
M EI	G/C nappy, punch cup whimsey	35
PO EI	Ski Star master berry bowl	55
PO GI	Floral & Wheat puzzle bon bon	50
LM EI	G/C pie crust edge 9" bowl basketweave	25
M EI	Springtime berry sauce dish	15
LM GI	Columbus 8" plates two pair	10
M EI	Leaf & Beads rose bowl cracked	5
Sm EI	Rococo vase large chip on bottom	5

Ralph Simendinger, 1002 Maycliffe Pl., Cincinnati, Oh 45230
PH 513-231-5381

G EI	Imperial Grape wine set old	250
P EI	Imperial Grape water bottle	125
G EI	Iris compote	45
P EI	Nautilus (unlettered)	145
M EI	Horses Head Madellion 7 1/2" plate	90
B EI	GoodLuck bowl	125
P EI	Singing Bird mug (N)	65
A EI	Little Fishes 5 1/2" 3 ftd bowl	80
M EI	Acanthus plate 10" dia	125
B EI	Orange Tree plate 9 1/2" dia	100

Jos. Mello, 535 Fish Rd., Tiverton, R. I. 02878 PH 401-624-2174

G EI	Stipple Rays compote (N)	20
B EI	O. T. ice cream stemmed	22
A GI	Fine Cut & Roses bowl 3 ftd	25
P EI	Broken Arches punch cups 3 ea	20
W EI	Leaf Rays nappy	30
M EI	Butterfly & Berry tumblers 5 ea	15
M EI	Holly Panelled bon bon ftd (N)	30
M EI	Octagon tumbler	15
M EI	Grape & Lattice tumblers 4 ea	15
M EI	Maple Leaf sm ice cream bowls 3 ea	12

Charles L. Perry, 8641 Lakeshore Drive, Southaven, Mississippi
PH 601-342-1694 evenings

G EI	G/C punch cups (N) 4 ea	20
G GI	G/C punch cup (N)	15

Ralph Blankenbecler, Rt 3 Box 46, Coeburn, Va 23240 PH 703-395-2229

G EI	Imperial Grape pitcher	150
CB EI	Beaded Shell mug	100
CB GI	Garland rose bowl	75
A EI	Millersburg Diamond tumbler	75
A EI	NG dresser tray	175
A EI	Heavy Iris tumbler	75
CB GI	Welch paper weight	150
M EI	Ranger milk pitcher	75
P EI	NG bon bon	50
P EI	P/F sugar top	30

Donna Embree, 3315 E Pershing Rd., Lincoln, Ne 68502 PH 402-423-2096

CB EI	Cherry Circles 2 hndld bon bon 7"	65
M EI	Snow fancy sauce	8
M EI	Imperial #9 sauce, crown base	8
M EI	Butterfly & Berry flared sauce 2 ea	24
B GI	Blackberry Banded hat (internal crack)	17
CB EI	Pine Cone 6" plate	47
M EI	Crackle plate 7 1/2"	13
M EI	Lattice & Daisy tumbler	18
A EI	Leaf Ray nappy	22
PM EI	Lustre & Clear jelly compote 6 1/2"	12

Victor M. Morency Jr., 404 Fisher Rd., No. Dartmouth Ma 02747
PH 617-636-5279

B EI	Goodluck bowl 8 3/4" X 2 1/4"	95
P EI	G/C banana bowl 12 3/4" 6"	150
A EI	Vintage ruffled bowl 5 1/2" X 2"	12

28

Linda Wheeler, 916 Fountain Ave., Louisville, Ky 40222 PH 502-426-8684

A GI	Beaded Shell lid for sugar	30
B EI	Orange Tree lid to powder jar rough inside rim tiny flake	12
A EI	G/C punch cups chip and cracks all for (3)	12
M EI	474 punch cup	9
G GI	Lustre Flute punch cup (N)	9
G EI	Acorn Burrs base to punch bowl (N)	50
W EI	Acorn Burrs base to punch bowl (N) rough spots rim	
M EI	Geometric pattern similar to pinwheel 7 1/2 bowl	50
M GI	Inverted Coin Dot pitcher dk at top worn clr at bottom	69
M EI	G/C tumblers (N) one light one dark 2 ea	13

Dick Wetherbee, 847 Stafford St., Rochdale, Ma 01542 PH 617-892-4420
after 6 PM

P EI	Fenton's Heavy Grape 6 1/2" bowl	32
M EI	Lattice & Points hat W/Daisy center	18
P EI	Tornado vase (N) bottom ground nicely done	85
LM EI	Floral & Grape water pitcher	58
A EI	Birds & Cherries bon bon rough edge	30
M EI	G/C 8 1/2" bowl w/basketweave yellow tint	20
P EI	Rosette (N) 8 1/2" 3 ftd bowl w/rings and ruffles red tint	42
G EI	Millersburg Blackberry Wreath 7 1/2" bowl	38
P EI	Double Stem Rose 9" dome ftd bowl lavender	35
M EI	Millersburg Whirling Leaves 10" bowl radium finish	42

Singleton and Cheryl Bailey, Box 95, Loris, S. C. 29569 PH 803-756-4021
after six 803-756-7495

R EI	Fern Panels hat	295
R EI	Fenton basket	150
R EI	Stippled Rays sauce	250
B EI	Heron and Rushes 7 pc water set	495
B EI	Apple Blossom and Twig plate	125
B EI	Peacock At Fountain orange bowl	250
G EI	Raspberry tumblers 6 ea	35
P EI	G/C master ice cream bowl	145
P EI	G/C shot glass 2 at	119
P EI	G/C 7 pc berry set (thumbprint)	145

29

Adelle Taps, 1376 W 112th St. #102, Cleveland, Oh 44102 PH 216-228-8798

CB EI	Dragon & Lotus 8 1/4 bowl collar base	45
A EI	Diamond Lace water tumbler	50
B EI	Lattice & Grape tumbler	42
M EI	Raspberry tumbler (N)	28
A EI	Oriental Poppy tumbler (N)	52
M EI	Stork & Rushes tumbler	19
M EI	Illusion 2 handled nappy scarce	40
PO GI	Smooth Rays bowl (Hearts * Flowers exterior 8"	50
A GI	Butterflies 2 handled nappy	42
M GI	Cut Arcs bowl ruffled 9"	20

Jim McClure, 116 Mansfield St., Belvidere, N. J. 07823 PH 201-475-3077

P EI	Wishbone & Spades 6" plate 2 ea	65
DM EI	Lattice & Grape tumbler	15
W EI	Peacock at Fountain spooner	95
PO EI	Wishbone & Spades small berry ruffled	45
M EI	Apple Tree tumbler	18
M EI	Orange Tree wine	18
DM EI	Orange Tree orange bowl	65
A EI	Isaac Benesch bowl	135
PO EI	Cherry w/Jewelled Heart back bowl	75
M EI	Windmill 5 pc water set tumbler w/rim chip free	110



WANTS

Dick and Dorothy King, 925 22nd Ave., Vero Beach, FL 32960

G Lids for Shell and Jewel creamer and sugar

Betty N. Klutts, 3800 N. W. 24th St., Oklahoma City, Ok 73107
PH 405-946-7497

B Pannelled Dandelion tumblers

M/M Ray Henry, 5326 Bell Road, Newark, New York 14513 PH 315-331-1974

IG G PO Hearts & Flowers compotes
P G IG IB PO Daisy & Drape vases
M Lily for small Vintage epergne
P G Orange Tree mug

Mr. Lewis T. Bradford, Rt 2, West Paducah, Ky. 42086 PH 502-488-3005

A P EI Beaded Shell water pitcher
P EI Grape and Cable N Centerpiece bowl footed
R EI Autumn Acorns about 8" bowl

Omer E. Sweeney, 28 Esmond St., Esmond, R. I. 02917 PH 401-231-4108

M N/G cookie jar cover
P Acorn Burr butter cover
M N/G sugar bottom

Mike Bevill, 48528 Hawk, Selfridge A.N.G. Base, Mi 48045 PH 313-949-4766

R W Sailboat ruffled sauce dish
G Panther small ruffled berry bowl
A Butterfly and Berry water pitcher, covered sugar, butterdish
G Butterfly and Berry creamer, covered sugar butterdish
W Orange Tree punch cups
M Hanging Cherries butter base
DM Fruit salad punch bowl base
AO R damaged water pitchers
AO Daisy & Drape vase will consider damaged pieces
IB Daisy & Drape vase will consider damaged pieces

Jos. Mell6, 535 Fish Rd., Tiverton, R. I. 02878 PH 401-624-2174

A Peacock at The Fountain sugar
A Acorn Burr tumbler 1
A Wreath of Roses base to punch set
P Imperial Grape punch cups 6
G Imperial Grape punch cups 3
M Peacock at The Fountain pitcher to table set

Larry Keig, 510 King St., Fayette, Ia 52142 PH 319-425-4467

M Amana, Iowa miniature mug (Near Cut)
M Britt, Iowa souvenir basket
P Bells and Beads small bowl
R Pulled Loop vase
R Orange Tree mug
G Inverted Strawberry powder jar lid
P (N) Grape & Cable powder jar lid
P Broken Arches punch bowl (not base)
P Dahlia master berry and small bowls
G Pulled Loop vase

Charles F. Dodson, 111 S Edgewood St, Arlington, Va 22204

DM EI G/C cover to powder jar
DM EI Imperial Grape water pitcher

D. W. Evans, 617 E 18th, South Sioux City, Neb

Little Barrel any color
P or A G/C stopper for cologne bottle

Virgil Lemos, 6374 DeLorimier, Montreal, Quebec, Canada H2G 2P4
PH 514-725-6217

A G/C punch cups 8 (N)

Charles L. Perry, 8641 Lakeshore Drive, SouthHaven, Mi 38671
601-342-1694

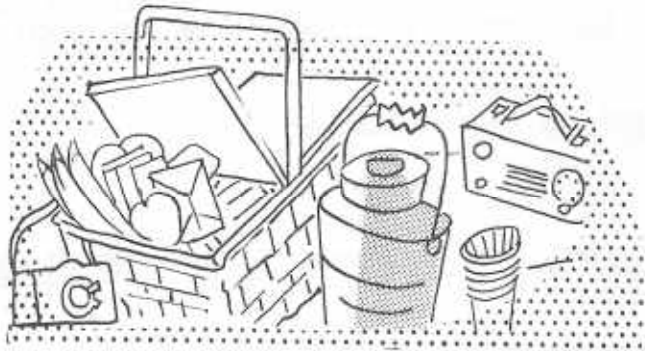
W EI Enameled tumblers for Zigzag pitcher

Singleton and Cheryl Bailey, Box 95, Loris, S. C. 29569 PH 803-756-7495
after six 803-756-7495

Big Fish or Trout & Fly pieces
Millersburg Peacock pieces
Courthouse bowl
Seacoast pin tray
Millersburg Wild Flower compote
Millersburg Acorn compote
Millersburg Poppy compote
Millersburg Fruit Basket compote

Adelle Taps, 1376 W 112th St., #102, Cleveland, Oh 44102
PH 216-228-8798

- G EI Millersburg Diamond tumblers
- M EI Star Medallion water set
- B EI Butterfly & Berry water pitcher
- A EI Diamond Lace water pitcher
- M EI Stork & Rushes water pitcher
- M EI Wine & Roses stemmed goblets 6
- M EI Flute & Cane tumblers 6
- M EI Panelled Dandelion tumblers 5
- M EI Cathedral and Arches punch cups 6



GRAPE & CABLE CANDLELAMP IN RUBY RED



ORDER FORM FOR 1981 H.O.A.C.G.A. SOUVENIR

PLEASE MAKE CHECKS PAYABLE TO H.O.A.C.G.A. AND SEND THEM TO:

MRS. LUCILE BRITT
3048 TAMARAK
MANHATTAN, KANSAS, 66502

WILL PICK UP _____ 1981 SOUVENIRS AT \$150.00 A PAIR TOTAL: _____
(INDIVIDUAL PRICE \$ 75.00)
ADD \$3.00 POSTAGE FOR EACH LAMP

PLEASE MAIL _____ 1981 SOUVENIRS AT \$150.00 A PAIR TOTAL _____
(INDIVIDUAL PRICE \$ 75.00)
ADD \$3.00 POSTAGE FOR EACH LAMP

PLEASE PRINT FULL NAME AND ADDRESS: _____

PLEASE RETURN THIS ORDER FORM ALONG WITH YOUR PAYMENT IN FULL TO THE ABOVE ADDRESS. THANK YOU AND REMEMBER THERE IS ONLY A LIMITED AMOUNT BEING MADE SO THEY WILL BE GOING FAST.

SPECIAL NOTICE

AT THE MARCH MEETING OF H.O.A.C.G.A. IT WAS DECIDED BY MAJORITY VOTE TO ALLOW EACH MEMBERSHIP TO PURCHASE TWO PAIRS OF LAMPS OR A TOTAL OF FOUR SINCE THERE HAVE BEEN SO MANY PAIRS SOLD AND INQUIRIES AS TO WHETHER A PAIR CONSTITUTED ONE PURCHASE AND IF SO IF THEY WERE ENTITLED TO ANOTHER PAIR.