

H. O. A. C. G. A.
DONALD E. KIME
BULLETIN SECRETARY
1202 W. 4th ST.
HAYSVILLE, KANSAS 67060

SEPTEMBER 1981

S	M	T	W	T	F	S
	1	2	3	4	5	
6	7	8	9	10	11	12
13	14	15	16	17	18	19
20	21	22	23	24	25	26
27	28	29	30			



FIRST CLASS





Heart of America Carnival Glass Association, INC.

**MEMBERSHIP JUNE TO JUNE
\$10.00 PER COUPLE OR SINGLE**

**PUBLISHED 15th OF
EACH MONTH**

PRESIDENT: GEORGE O. MCGREW JR.
6800 WOODWARD
OVERLAND PARK, KANSAS 66204
913-262-8822

VICE PRESIDENT: GEORGE BOLLES
5204 CATALINA
SHAWNEE MISSION, KANSAS 66205
913-432-5438

TREASURER: ELIZABETH BOLLES
5204 CATALINA
SHAWNEE MISSION, KANSAS 66205

SECRETARY: LUCILE BRITT
3048 TAMARAK DRIVE
MANHATTAN, KANSAS 66502
913-539-1933

BULLETIN SECRETARY: DONALD E. KIME
1202 W 4TH ST.
HAYSVILLE, KANSAS 67060
316-524-3123

FROM THE PRESIDENT

At the 1981 Convention there were a few requests and inquiries as to the possibility of having the convention at some other location. First I should explain the By-Laws of H.O.A.C.G.A. state that we must have the convention in the greater Kansas City area. I believe that this is convenient to all those who attend because it is centrally located.

Keeping this in mind my wife, Linda, and myself contacted the Kansas City Convention Center, and through their help, visited all motels and hotels who met with our requirements. After several week ends of meetings we found none that would offer all the requirements and benefits that we are now offered. I might mention that some of the benefits now offered save the club about \$1500 at each convention.

The Holiday Inn is undergoing some minor remodeling which should give us more room at the banquet and the Convention department is under new management. After meeting with them, I feel that they will work with the convention committee closely and fairly. One of the concessions that they agreed upon was to furnish, at their expense, a quality sound system for the banquet speaker.

I have also stressed to them past problems with their staff being somewhat unhelpful and they agreed to watch this problem carefully. I hope to see you all return next year for a bigger and more interesting and pleasant convention.

Concerning those who did not receive the small mug at the banquet we have ran into somewhat of a problem. Mosser Glass Co. sent a letter saying that they would not run the 75 requested in May due to an overload in orders. They did send 16 which we left from the initial run and these will be mailed to out of towners whose names are on file.

We have taken several steps to insure that all will receive their mugs. Mr. Cooley Miller contacted Mr. Frank Fenton and he said that since we were in a bind he would run them but it would be sometime in November before he could get to them. Upon hearing this Mosser said that they may be able to run them after all so thanks to Mr. Fenton we will have the mugs from one company or the other although somewhat delayed.

I might add that we have increased our order to 375 cobalt blue mugs for next year so we should not have a shortage.

George McGrew Jr.
President

THE AUGUST MEETING OF H.O.A.C.G.A.

The President George McGrew called the meeting to order at 2 P.M. at the Holiday Inn, Mission-Overland Park, Sunday August 23.

The Secretary read the minutes of the last meeting. They were approved as read.

Elizabeth Bolles, Treasurer gave the treasurers report for July and August. Balance on hand 6-27-\$16,375.47 Income \$3379.06 Expenses \$2812.31 Balance on hand August 20 \$16,942.22. The report was placed on file for audit.

President McGrew reported he had received sixteen mugs from Mosser. He also read a letter from Mosser saying that it would be November before he could run the mugs. Cooley Miller, our souvenir chairman talked to Mr. Fenton about making the extra mugs. He said they would but it would be a while before they run the vaseline color.

Janet Zahn is our convention chairwoman and she will have a report next month.

Bob Grissom reported that Bill and Dorothy Taylor delivered the Corn Vase mould to the Fenton Art Glass Company. The Fenton Company has all our moulds.

President McGrew reminded us that the first week of October is National Carnival Glass Week. He encouraged us to set up displays and promote carnival glass.

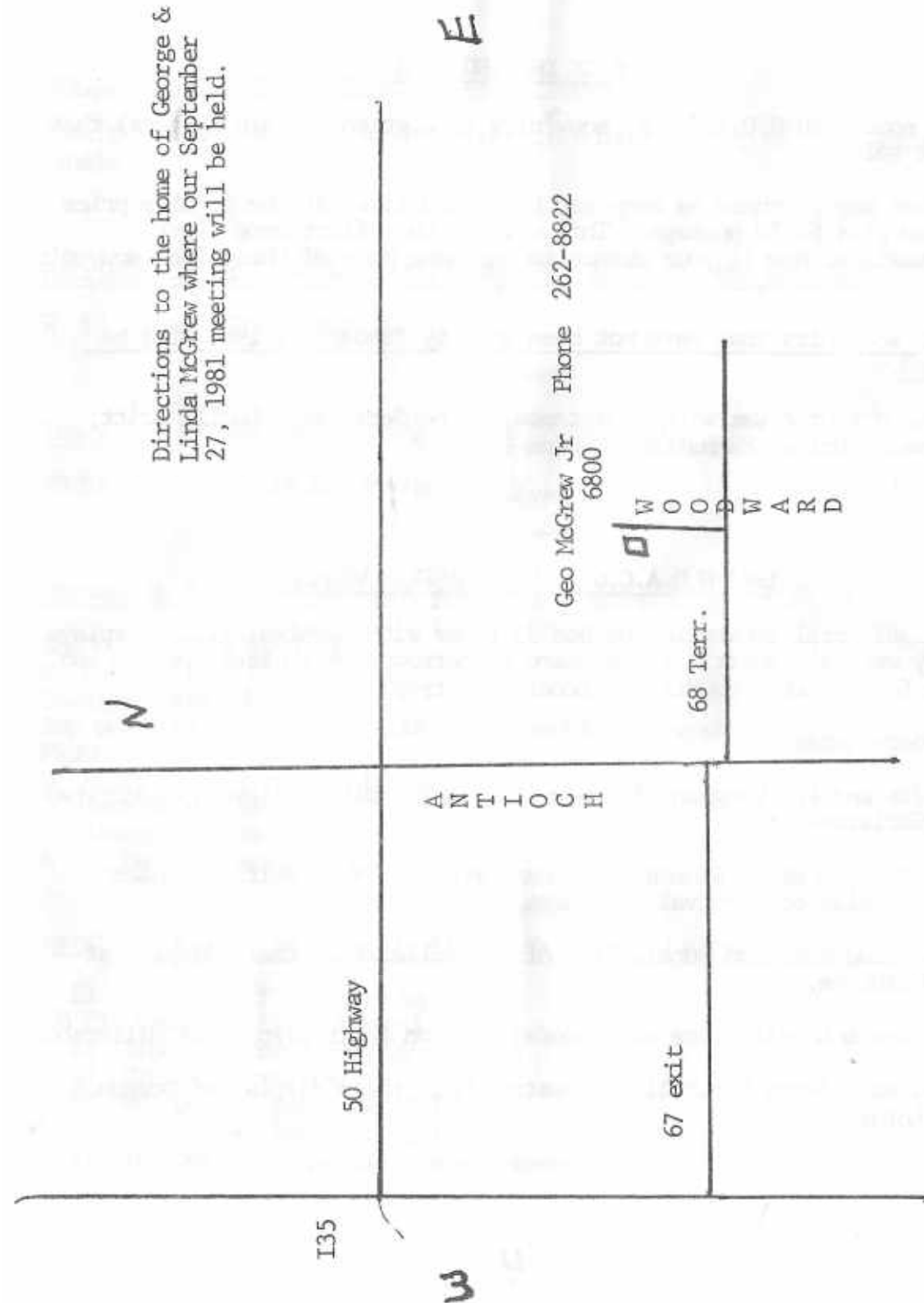
After a short break Bob Grissom gave a program on Butter Dishes.

The next meeting will be September 27 at 12:30 PM at George and Linda McGrew's home at 6800 Woodward, Overland Park, Kansas. Directions will be another page in this bulletin. The meeting will be preceeded by a brunch.

John Britt moved we adjourn, Rosa Grissom seconded the motion. We adjourned.

Lucile Britt, Secretary

George McGrew, President



TIME IS DRAWING NEAR

We have some 1980 H.O.A.C.G.A. souvenirs (ice green hat pin holders) that have not sold.

Any member may purchase as many as they would like, at the regular price of \$35.00 plus \$2.50 postage. This will be on a first come first served basis so now is your chance to purchase more of these 1980 souvenir pieces.

All 1980 souvenirs that have not been sold by January 1, 1982 will be destroyed.

Please send your order with remittance to the Secretary, Lucile Britt, 3048 Tamarak Drive, Manhattan, Kansas 66502.

1981 H.O.A.C.G.A. ROOM DISPLAY WINNERS

At our 1981 April convention we had 33 rooms with carnival glass displays and they were all super. It was hard to narrow your choices down on who to vote for. Each room display received a trophy.

The winners were:

First--Jim and Pat Vaughan of Hindsville, Ark., with a cleverly decorated Christmas tree.

Second--Byron & Grace Rinehart of Charleston, W. V., "Spittin Tobacco" a display of carnival cuspidors.

Third--Roland Kuhn and Donald Kime of Haysville, Ks., their display of Wishbone.

Fourth--Don & Connie Moore of Alameda, Ca., on their display of Millersburg.

Fifth--Ivan & Betty Mitchell of Houston, Mo., their display of Dragon & Lotus.

HELP

Your contributions this time were outstanding and want to thank you for sending in all the good material and hope that you will keep up the good work each month. The educational items with photos are a tremendous source of reference material as well as educational material.

I think in our hobby of collecting carnival glass the people share their knowledge and are more willing to help one another than any other group I know of. It is great that those who have vast knowledge and are willing to put it all down in print for all of us.

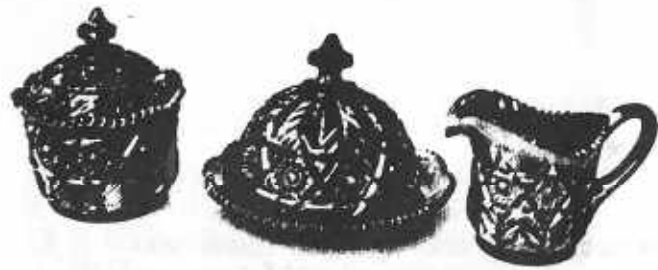
I would like to ask all who send in articles please get them in before the 1st of the month. It will keep the editor from having to burn the midnight oil each month to get all of the articles in the bulletin. I want to be able to put every article in that I receive but when I get 25 letters the night before I send it in to the printer it keeps me up most of the night.

Editor

DUES

Several have not paid their 1981-82 dues and as you know September 1 is the cut off date to receive your bulletin if you have not paid your dues. They are \$10.00 per year and should be sent to Lucile Britt, 3048 Tamarak Drive, Manhattan, Kansas 66502.





21. INVERTED FEATHER

Table Sets

FILLERS

The table sets fillers for your notebooks are available now. The fillers are free to all members but we need a dollar (\$1.00) for postage and packing. Send your dollar to Lucile Britt, 3048 Tamarak Drive, Manhattan, Kansas 66502.

Your notebook now should have Punch Sets, Mugs and Table Sets to be up to date. If you are short the mug fillers send a dollar to Lucile Britt also.



20. HOBNAIL



STAR & FILE - AN IMITATION CUT GLASS TUMBLER

"Star & File" was made by the Imperial Glass Company of Bellaire, Ohio. This old well known glass company actually made tons of this beautiful iridescent glass during the 1910-1920 era. Imperial was well known for their many imitation cut glass patterns and "Star & File" is one of those patterns. Most of Imperial's patterns were made in a variety of colors, but I have seen the "Star & File" tumblers only in marigold. This tumbler, like many other of Imperial's tumblers, has a collar base. A sunburst type of figure is pressed into the underside of its base. This base figuration is very similar to that used on other Imperial tumblers such as Octagon, Fashion, Star Medallion and Four-70-Four.

While "Star & File" tumblers are actually not real hard to find, they were never made in the great volume that was produced with such tumblers as Field Flower, Four-70-Four, Imperial Grape, Windmill, Fashion, Lustre Rose, Octagon and Tiger Lily in marigold. All of these Imperial patterns were made in huge quantities in marigold. Imperial was focusing in on the great demand by housewives for this type of imitation cut glass and the smash hit of iridescence glass, all at the same time. The demand for these must have been good by families of that era, because a great many of these marigold water sets were produced. For some reason however, the "Star & File" never was produced in that volume. In fact, a water set in "Star & File" is actually considered scarce. It would be rather hard for you to put a set together piece by piece.



STAR & FILE IN REGULAR TUMBLER & ICE TEA SIZE

A number of years ago, in looking through some old Imperial catalog reprints and more recently viewing an old Imperial catalog, I noticed that "Star & File" tumblers were made in two entirely different sizes. But where are these large size tumblers and where are they hiding today? Several years ago I heard about one of these somewhat taller ice tea tumblers that was known to exist in a "Star & File pattern collection. This past summer I was able to photograph it and actually hold it in my hands. They are extremely rare. No author has ever listed them in any of their carnival glass books. It is most likely that you are reading about them for the first time. They are of the exact pattern, with size being the only difference in the two. The regular tumbler 4 1/4 inches high while the ice tea measures a full 4 3/4 inches. It is also wider at the top. It looks so much larger that you can easily tell the difference if you should see one for sale sometime. I don't think you would have any trouble identifying it, as it is a good deal taller than the regular table size tumbler. It was listed in one of my old advertising reprints as a 12 oz. ice tea, while the regular table tumbler was of the 10 oz. capacity.



EVERY ARTICLE SHOWN IN THIS BOOK, CAN BE ORDERED INDIVIDUALLY

REPRINT FROM OLD CATALOG SHOWING STAR & FILE

The two sizes of "Star & File" tumblers are shown here in this old Imperial catalog reprint. Also notice that "Star & File" was also produced in a cordial and a goblet, as well as the wine. It is also interesting to note that the little six inch "Star & File" plate was used to hold the fruit salad, the sherbert, the goblet and the ice tea tumbler. This is not a saucer from a cup & saucer set. While not shown in the catalog reprint here, it was also made in a rose bowl, celery and table set.

In conclusion, "Star & File" is indeed a most interesting pattern. It was produced in some pieces that many of us have never even seen. The tumbler, while never discussed in length by most tumbler collectors, is a beautiful piece of carnival glass and a fine addition to any collection. The large 12 oz ice tea tumbler could be classed as extremely rare. The writer knows of only one example of this fine tumbler, but you can be sure he will be searching far and near for one to add to his collection.

This is article #44 in this series on carnival glass tumblers. Next month we will discuss a Northwood pattern that is simply called "Raspberry". It is very common in marigold, but have you ever seen one in cobalt blue? It does exist and we will give you more details on this fine Northwood pattern next month.



M612. Tall Ice Cream on M612—6 inch Plate
(3 Pieces)

STAR & FILE TALL ICE CREAM AND 6 INCH PLATE

John & Lucile Britt

PICTORIAL PATTERN PARADE



CARNIVAL GLASS PICKLE CASTOR

We think it is very unusual to find a pickle castor in carnival glass. The above set is in deep marigold with excellent iridescence. We do not know the name of this pattern or the maker but perhaps the name "Stretched Diamonds & Fans" might suffice until we find the old pattern name. Anyone know this pattern? A Concave Diamond castor set is shown in Sherman Hand's book 3 page 87. We have never seen this one, but Mr. Hand states in his book that he knows of three of these Concave Diamond sets. This pretty carnival glass castor set shown above is owned by LaNell Says of Houston, Texas.



BORDER PLANTS IN PEACH OPALESCENCE

"Border Plants" is a pattern that is not seen too often. It was made in various shapes of bowls, both flat and dome footed. It is usually found in a beautiful rich peach opalescence with outstanding iridescence. This particular piece is dome footed but flattened out with one side turned up. We thought it was an unusual shape. This is one of a large list of patterns that was made by the old Dugan-Diamond factory of Indiana, Pennsylvania.



We would appreciate any information that you might know about the above carnival glass pattern. If you have seen this pattern in any shape, or know it by name, please let us know.

Pictorial Pattern Parade
by John & Lucile Britt



BERRY WREATH PATTERNS

The best way to understand the Millersburg berry wreath patterns would be a comparison of their similarity and their differences.

These patterns include Blackberry Wreath, Grape Wreath, Strawberry Wreath and Grape Leaves. They all have a common denominator—a wreath of vines and stippled leaves which form a square inside the body of the bowl. To achieve variations, the designer has added a center design to three of the four patterns and by doing so has given us four choice Millersburg patterns. These variations are as follows:

1. Blackberry Wreath always has a center design consisting of a large leaf with one large berry.
2. Grape Wreath always has a geometric design in the center. There are a least four of these designs including a webbed star, a four feathered cross, a four leaf clover ring and a star burst pattern.
3. Grape Leaves always has four small leaves and a berry cluster in its center. There are more leaves in the basic design, too.
4. Strawberry Wreath has no center design, but usually is found with a "jeweler's bead" on fine radium glass, indicating it come along late in the series.

A 1911 ad which appeared in a glass trade paper shows the Blackberry Wreath and three variations of the Grape Wreath, so production must have overlapped. Apparently all were popular.

In addition to the interior difference of these patterns three prominent exterior designs are known. These are a typical wide paneling (Strawberry, Blackberry and Grape Wreath); Near Cut Wreath (Blackberry Wreath); and Mayflower (Grape Leaves).

Shapes of berry wreath patterns are mostly bowls of all sizes, but Blackberry Wreath can be found in small and large plates and a spittoon whimsy; Strawberry Wreath is found in small compotes, a flat based gravy boat whimsy and a footed banana bowl whimsy. All these shapes are rare and much sought.

Berry Wreath patterns can be found in the usual colors of marigold, amethyst and green (Grape Leaves has not been reported in green) and in addition Blackberry Wreath, Grape Wreath and Grape Leaves are rarely seen in vaseline and Blackberry Wreath is seen in blue.

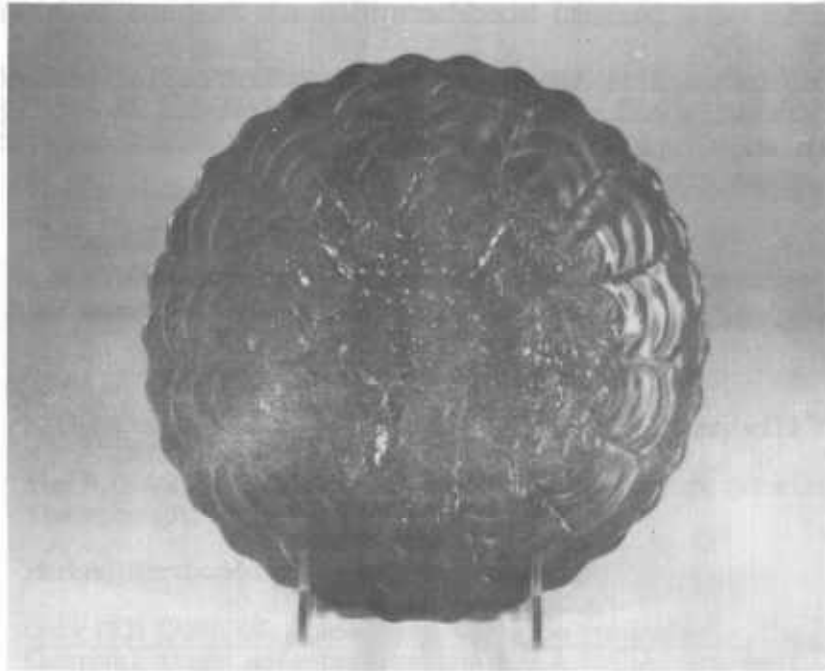
The mold work of each of the berry wreath patterns is usually quite good and both satin and radium finishes are found. And while Blackberry Wreath and Grape Wreath are easily found, Strawberry Wreath and Grape Leaves are quite scarce.

Bill Edwards
Indiana



By John Resnik

Carnival Cameos by Don Moore



IMPERIAL GRAPE 9" PLATE - Next to Northwood's Grape and Cable, there were more shapes made in the Imperial Grape pattern than any other. It is interesting that the two most popular and widely produced lines of Carnival were grape patterns. Grape patterns and Carnival glass are almost synonymous, but that's another story.

The Imperial Grape pattern is so easily found that we lose sight of the fact that this 9" plate must not be taken for granted. The 6" plate is not too difficult, but the 9" is very hard to find in any color. It is known in the three primary Imperial colors; helios green, marigold, and purple. The latter two are particularly beautiful, and a purple one at \$150 would be a bargain in my opinion.

Shown are two Cordial Sets, which to the best of my knowledge, are not listed in any known carnival reference book. Both sets consist of a decanter with solid stopper, 6 cordials, and a matching undertray. The combination of the rich, rather shiny, marigold color and the heavily patterned thick glass leaves no doubt in my mind that these sets are of English manufacture.



The first photo shows the set I have named Star & Fan, in keeping with my personal preference for names that describe the piece. The decanter measures 10" to the top of the stopper, by 3½" at the widest point. It's capacity is 12 ounces or 1½ cups. The cordials are 3 5/8" tall on a 1 5/8" diameter base. They hold exactly 1 oz. The undertray is 9½" in diameter and has a 1" scalloped lip at the outer edge. The bottom is absolutely flat with no base of any kind.

As you can see by the dimensions, this set is somewhat smaller than the normal wine set. Cordials, of course, are more potent than wine, so I guess the thinking was that a little bit would go a long way. 17

The pattern on this set is all intaglio on the exterior of the glass. The decanter has an eighteen point star on its base, with a duplicate of it appearing at the center of the undertray. The cordials have a deeply indented base with six smooth, slightly scalloped panels adorning the exterior of the base and stem.



The undertray for the set in photo #2 appears in Bill Edwards Imperial Book. Mr. Edwards list the tray as a plate, obviously having no way of knowing that the rest of the set existed. He also must have been working from a photograph, for he states the pattern as intaglio where as in reality it is a raised rather than cut-in pattern. The 1" scalloped, 90degree lip at the outer edge of the tray eliminates it from the plate category, and the color, irridescence and general "feel" in my mind eliminate it as an Imperial product.

Mr. Edwards has named this pattern Zipper Stitch, which is very descriptive of the pattern, so I see no reason to burden it with yet another name.

This set has almost exactly the same dimensions and capacity as the Star & Fan set. These cordials are 1/8" taller and 1/8" narrower at the lip, but this is due solely to their being straight sided rather than flared. The decanter has a 24 point rayed star on its base, and is also duplicated at the center of the tray. The cordials have the same 6 smooth panels on the stem and base as the Star & Fan set, but the bottom of the base has a 12 rayed star.

Both sets were found in an import antique store, which lends further credence to the hypothesis that they are of English origin.



I.C.G.A. CONVENTION

The distance to La Crosse, Wisc. was almost enough to discourage us to go to the I.C.G.A. convention August 5-8. Yet we had never missed one so hated to break our attendance record. To far to get there in one day so we left early on Tuesday the 4th and drove as far as Beloit, Wisc. to stay all night-leaving us about 200 miles yet for Wednesday. We set watches back an hour so that helped. We stopped briefly at the well advertised "Dells" to get breakfast and make plans to see them on Saturday. Then on to La Crosse through a storm with rain so heavy we finally pulled off for a let up. Storm was only resting as it began in full force when we were again on our way. We reached the motel about 11:30 and many already there with carnival set up for displays and sale.

The motel was nice but they made us all wait until after 2 PM for the rooms. It did give us a chance to visit and look around. We did get a pool side room so spent rest of evening on getting the "Kittens On Vacation" settled at their table motel and various activities. They were happy to be on display again as they love all the attention and excitement of a convention. The displays this year were especially nice and I think they said 62 awards were given for displays which may be a record.

Special certificates were given to John and Lucile Britt, Don and Connie Moore for their educational articles. We always appreciate every article they have done and have gained much through their research. So nice they share their vast knowledge with us.

The Ludeman display of Northwoods glassware was fabulous. Just wonderful to see row after row of beautiful pitchers etc. in every color, size or pattern. The Ludemans worked for days to get over 1,000 pieces packed up, delivered and set up in correct order. A sight never to be seen again anywhere. We say a big thank you to them for the time and effort spent to share their collection with us. A lovely silver plaque (engraved) and a red Frolicking Bear whimsey souvenir was given to the Ludemans as a token of appreciation from the carnival club.

Carl Booker of Griffith, Indiana was retiring as News Editor so a lovely engraved lamp was presented to him for his service. He did an excellent job and we wondered who could ever take his place. Well, Carl and Fern Shroeder of Kendall, Wisc. came to the rescue. We have known the Shroeders for a few years and feel they will be great editors. We were lucky to get someone so talented and capable. Our thanks to Carl and

Fern for accepting the responsibility.

Mr. Bob Vining (our past President) was also given a certificate of recognition with a life time membership for him and wife Kitty. He served the club well and we did miss his southern drawl and witty comments. However our new President Jack Adams did a great job and the whole convention came off in good order. Jack and wife Mary guided a caravan of cars to their home for two days allowing one and all to see their lovely home and their beautiful collection of mostly Millersburg carnival. All displayed in perfect order behind glass and appropriately marked for identification. A trip to always remember with pleasure.

The Frolicking Bears Cuspidor in aqua was so nice-all are already sold-it may be made in red next year for the 82 souvenir. The whimseys were quite unusual with some selling as high as \$490.00 for an over size tumbler and \$470.00 for a large mug. Both went to Texas I think. Anyway sales of all were good and helped a lot on club expenses.

The hospitality room was one like we have never had before. It had everything from all kinds of fruits to salads,snacks, cookies and even watermelon. Thanks to George and Mavis Loescher who were in charge. They were really great.

The banquet was a festive occasion with a "polka" band for entertainment. Several of our talented couples came out for some dancing, and we always love to see them do some fast stepping. The good bye breakfast came to soon as many of us were late boxing up displays and dishes so only a short nap before our last get together. We had enjoyed seeing every one again so it was sad to part-all going to every section of the country.

We did stop to see the "Dells" along with good friends Hoehstetlers and Swartouts of Ohio. We had a 3 to 4 hour boat trip along the river for miles of spectacular scenery. We did see the Churches and Harnishes of Pa. also doing the "Dells". We regretted we could not all be together. They were going one way as we went the other.

We drove to Madison, Wisc. for the night then went back about 50 miles to see "House on the Rock". We had heard about it at the convention. Well, there are no words to describe the "House". It is fantastic, a huge Museum in a way-yet it isn't either. It was the most spectacular place we have ever seen-long corridors, all carpeted, wind their way to the top which is a 450 foot rock. On all sides ascending or descending

there are lovely collectibles from all over the world, there is music playing from antique organs, violins, a whole orchestra not once but over and over. It will hold you in a trance from beginning to end and after you have seen it you will find it hard to believe. Its something anyone would enjoy and we surely hope to see it again. Its to much to absorb in one trip. Next years convention is around Indianapolis and we surely will be remembering that "House" so will see it again if opportunity ever comes close.

We had a good trip except torrents of rain came down the last 50 miles going into La Crosse. Then as we came around Chicago on Sunday a very large storm began with no end ever. We finally left it as we turned south on I-65. We stayed close by and came on home 470 miles on Monday the 11th. This ends the convention season for this year. There are to be two Tom Burns auctions in Ohio this fall so we may get to them. Tom recently had acquired a rare whimsy cuspidor shaped "Blackberry" pattern with basketweave outside-its lovely and maybe up for sale at one of the auctions. He had it on display at convention-as temptation to all.

We had a surprise telephone call from Mr. Ray Notley of London, England. He attended ACGA convention at New Philadelphia, Ohio and was such a nice man. He had tried to get a message through to La Crosse during convention. A message was read to the group from Maurice and Esmae Salmon of Australia. They were with us last year and wanted us to know they were remembering. Such a nice couple.

It was a nice convention and well worth the 1780 miles there and back. I will try to ignore the 95 gallon of gas it took-Once at \$1.56 a gallon. Wonder what it will be next year?

Grace & Byron Rinehart
Charleston, W. Va.

ABC plate - m. \$30.00
 HOLLY BOWL - blue 42.50
 SCROLL EMBOSSED PLATE - purple 95.00
 RARE AQUA OPAL N SINGING BIRDS MUGS - 950.00 & 975.00
 ICE BLUE SINGING BIRDS MUG 600.00
 PURPLE SINGING BIRDS MUG 50.00 & 60.00
 GREEN SINGING BIRDS MUG 60.00
 BLUE SINGING BIRDS MUG 105.00
 STIPPLED MARIGOLD SINGING BIRDS MUG 40.00
 DRAPERY BOWL - pastel blue 50.00
 PERFECTION PITCHER 2200.00
 PERFECTION TUMBLER 300.00
N PEACOCK ON FENCE PLATE - STIPPLED BLUE 225.00
 N BUSHEL BASKET - AQUA OPAL 190.00
 WISHBONE & SPADES CHOP PLATE - PURPLE 800.00
N GOOD LUCK PLATE - purple 180.00
RED ORANGE TREE MUG 325.00
 GREEK KEY PITCHER - AMYT 700.00
 GREEK KEY TUMBLER - AMYT 70.00
 STIPPLED THREE FRUITS PLATE - blue 90.00
 HOMESTEAD PLATE - purple 400.00
 FISTHERMAN MUG - marigold 110.00
 WOODLAND VASE - m; Souvenir of Princeton, Wisc. 90.00
N SPRINGTIME - M; BUTTERDISH 140.00, CREAMER 80.00, SPOONER 45.00
 CHRYSANTHEMUM BOWL - blue 70.00
 POPPY SHOW PLATE, ice blue 375.00, amyt 220.00, blue 250.00, white 350.00
 FINE CUT & ROSES ROSEBOWL - amyt 85.00 mar. 250.00
N DANDELION MUG - purple 350.00
 ROUND UP PLATE - blue 170.00
 CORN VASE - pastel green 150.00

N PEACOCK ON FENCE PLATE p. 200.00 gr. 250.00
 HOLLY PLATE - b. 85.00
 LEAF & BEADS ROSEBOWL - aqua opal 100.00
 WINDFLOWER PLATE - b 80.00
 ORANGE TREE PLATE - white 70.00
 FRUIT & FLOWERS BONBON - amyt 65.00
 MARY ANN VASE M. 55.00, & 65.00 amyt 80.00
 HERON mug, p. 225.00
 PRIMROSE BOWL - green 85.00
 13" STAG & HOLLY BOWL - 90.00
 PONY BOWL - m 50.00
 ORANGE TREE LOVING CUP - 145.00 & 100.00
 ORANGE TREE HATPIN HOLDER - - blue 90.00
 INVERTED THISTLE TUMBLER - 185.00
 PEACOCK AT FOUNTAIN TUMBLER - p 35.00
 MAPLE LEAF BUTTERDISH - m 110.00
 STORK & RUSHES 6 PC. WATERSET - m 250.00
 LUSTRE ROSE PITCHER = amyt 220.00
 STRAWBERRY PLATE - m 80.00
 HOACGA SOUVENIR LOVING CUP - red 80.00
 HOACGA souvenir mug 1981 vaseline opal 40.00
 HOACGA SOUVENIR WATERSET - red 90.00
N GRAPE & CABLE SWEETMEAT WHIMSEY - amyt 600.00 DRESSER TRAY,
 amyt super color 190.00
N GRAPE & CABLE HATPIN HOLDER - green 180.00 marigold butter 110.00
N SINGING BIRD PITCHER & 4 TUMBLERS - 500.00
 BO-PEEP MUG - marigold 80.00
 HORSES HEADS BOWL - 65.00 mar.
 BEADED SHELL MUG - p. 50.00
 GOOD LUCK PLATE - m. 110.00
 PEACOCK AT FOUNTAIN WATER SET , ELECT. BLUE 560.00

L.L.C.G.C. CONVENTION

The L.L.C.G.C. 7th annual convention was held on June 12th, 1981 at the Holiday Inn of South Beloit, Ill. Approximately 85 persons attended Saturday nights banquet. Much down from last years banquet but many more registered for the convention but did not attend the banquet.

While the convention was not without it's pitfalls; which seems to be an expected thing: such as room problems, food and air conditioning problems at the banquet. I feel over all things went well.

Friday night hospitality room "Country Style" buffet was a real feast with a solo guitarist for the evening. It again provided to be a success among those in attendance.

Saturday mornings seminar was given by Jack Wilson showing slides of Millersburg glass while giving an education on Millersburg patterns, colors and price.

Saturday afternoons seminar was given by George Loescher on Aqua-opalescent glass and other rarities from his collection. We all enjoyed George's tales of the chase, but he wasn't giving away any of his trade secrets.

Saturday nights banquet was : N. Y. steak, potatoe, green bean amondine, salad, roll and sherbet. The guest speaker, Mary McBride, who has been head writer for 17 years for Phyllis Diller, was the highlight of the banquet. Her wit and humor kept everyone in stitches.

The whimsey auction followed with a super job being done by auctioneer Tom Burns from New York. This auction bringing 1162.50 to the club. Among the whimseys a PO lily of the Valley basket sold for \$300. It had been thought that the basket was the only one made when Rick Kojis and Jack & Mary Adams were visiting the Fenton factory for the making of the I.C.G.A. souvenir they found that "just one" is almost never made. Looking closer at some boxes along a wall they found about a dozen baskets in PO all had been done at the same time as the one sold which had the best color. Rick Kojis, President of L.L. has since discussed the matter with the purchasers of the basket and we understand the matter has been resolved to their satisfaction.

The carnival glass auction was held Saturday afternoon and was well attended, with pieces moving briskly and seeming to hold an average price range.

Shortly after the opening of L.L.'s convention the 1981 PO bell souvenirs were sold out. A list for any carnival glass club.

Display award winners were allowed to select a PO bell whimsey of five selected for this purpose. Winners were: Jack & Mary Adams, George & Mavis Loescher, Phil and Dorothy Perry, Carl and Fern Schroeder, Bill & Jenny Taylor. A big thank you to all.

Linda Halfacre
Wisconsin

WELCOME NEW MEMBERS

M/M Clarence Hall, Missouri
Cato S. Hightower, Texas
M/M Frank Long, Texas
M/M Bert Mandel, New York
Dorothy Thomason, Texas
M/M Robert Salberg, California
M/M Donald Campbell, Illinois
M/M Patrick Jacques, Michigan
M/M Charles Karas, Michigan
M/M Bob Lovell, Tennessee
M/M Lawrence Werff, Iowa
M/M Charlie Wiltshire, Wisconsin
M/M George Yaccarino, New Jersey
M/M Delbert Carrell, Oregon
M/M Edward Henderson, Arkansas
Mrs. Marion Dietch, Illinois
M/M Bernie Mahn, Missouri
M/M Ralph Cline, Washington
Milby Dietrick, Washington
M/M Sam Holden, Washington
M/M Wilfred Nash, Victoria, Canada
M/M Robert Sherrod, Washington
M/M Lynn Lewis, Washington

Mollie Keith, California
M/M Robert Katowitz, Missouri

AIR CAPITAL CARNIVAL GLASS CLUB

The Air Capital Carnival Glass club met at the home of Roland Kuhn and Donald Kime, July 12. There were 14 members and one guest present. We have 4 new members now who have joined this month to make our membership up to 36.

Betty Greb gave the program on more of Mrs. Hartung's book #1. We had most of the patterns listed to show as she gave the program.

Winnie and Floyd Brim were the hosts and served home made ice cream, cake and fresh strawberries for refreshments.

Our next meeting will be at Nola and Steve Guthrie for a covered dish supper after the meeting. The program will be given by Roland Kuhn and Donald Kime.

Donald Kime
Secretary

Just a few days ago a good find was made by one of the members of The Air Capital Carnival Glass club members. It is an Orange Tree orange bowl flattened out. It is almost a pastel marigold and is shaped like the Stag & Holly bowls but is larger. The detail is very plain to be flattened out as much as it is. Upon inquiring around to several very few had been seen in marigold. One collector advised they had seen 2 in blue but none in marigold. The goodies are out there so keep digging and hunting and maybe your wish will come true when you least expect it.

HELLO FROM WISCONSIN

First I wish to thank you for my filler on table sets. They are very informative. Also a suggestion-the stories of Millersburg Notes by Bill Edwards which are nice-would be nice to have a picture of the glass with the story, it just an idea. Next I would like to thank John and Lucile Britt, for helping me find my tumblers. We made our first convention IOGA in LaCrosse, Wi. It featured the outstanding display of mainly Northwood glass-about 1000 pieces which we looked at 6 times. Also Jack and Mary Adams were graciously having everyone out to their beautiful home to see their nice exquisite collection of Millersburg. The rooms display were so nice-the people very friendly and helpful. Thanks to everyone.

Donald & Mary Schrank
Wisconsin

The Tampa Bay Carnival Glass Club of Florida held it's regular monthly meeting Sunday, August 23 at the home of Ray and Ruth Argyros in Palm Harbor. Ruth Argyros and Shirley Conyer reported on the ACOGA convention recently held in Ohio. Art Smith read letters from out of state members Rovene Heaton, Lucile Britt and Florence Graham. We look forward to our winter visitors returning in a few months. At the same time we welcome any visitors to attend our meetings which are held at noon on the third Sunday of each month. The meetings start with a delicious meal prepared by the ladies. For information regarding meetings call Art Smith 813-644-4058. The next meeting will be September 20 with the Smiths in Lakeland.

Plans are underway to celebrate Carnival Glass Week with a display at shopping mall in the Tampa area. Lose Your Heart to Carnival Glass will be the theme for a gala St. Valentine's Day Carnival Glass Jamboree to be held Sunday, February 14, 1982 in Lakeland, Florida. Lakeland is conveniently located in the central area of the state. We are planning a day of fellowship with carnival glass lovers. More details will be announced shortly. However, put this day aside for a special occasion.

Arthur Smith
Florida

It gives me much pleasure as President of N.C.C.C. to announce to all H.O.A.C.G.A. members that starting in October we are going to add a new section to our meetings. We, on the West Coast, are very fortunate to have as one of our members Mr. Donald Moore. He has very kindly offered to add this new feature called "Whats New in Carnival". He will give us information and keep us updated on carnival glass every three months.

If you would like to know more about our club, you can become a member for just \$5.00 by sending a check to Mrs. June McCarter, 1205 Clifton Drive, Modesto, Cal. 95355, Treasurer of N.C.C.C.

Mabel Sprain
N.C.C.C. President

TEXAS CARNIVAL GLASS CLUB

The Texas Carnival Glass Club met in Waco on Sunday, August 16, with 45 members present.

Reports showed that 4 attended the Northern California Club convention, 2 attended American Carnival Glass Club convention and 14 attended International Carnival Glass Club convention. All reported wonderful times and great conventions. Most appreciated were the wonderful displays of glass. Thanks to all these clubs.

Don Staley gave an interesting demonstration of "Colors in Carnival", using his tumbler collection for examples.

Next meeting will be at Temple on Saturday, November 21.

Iris Herring
Secretary

UPCOMING TOM BURNS AUCTION

On October 9 and 10 there will be an auction of about 400 pieces at the Midway Motor Lodge in St. Louis West Port. The collection will be that of Mr. George Veltrop of St. Louis and consists of many fine pieces. Included are a number of rare red pieces. A 9 1/2 - 10" Vintage Grape bowl, a Cherry Wreath bon bon (tiny nick), a nice Horse Head Medallion nut dish, and a 9" Windmill and Mums, plus others; an 8 pc Memphis punch bowl set in white; a number of super G/C pieces such as a marigold open compote, purple and marigold dresser sets, and much more; fine water sets including a blue Orange Tree Variet, blue Bouquet, White Floral and Grape, scarce green N Dandelion (sm nick on pitcher), and many more. It's a fine collection and I am pleased to present it in the mid-west. If people would like to be placed on my mailing list and have not done so, send name, address, etc. to Tom Burns, RD 1, Bath, New York 14810.

Brochures will be out sometime in September for this auction. For Motel reservations they may call the Midway at 314-291-8700. Room rates will be \$41.50 per room, per night. Rooms will be available poolside on a first come first served basis. The motel is located off the Dorsett Rd. exit of S. I270-about 3 miles south of I70 and 270 Interchange westside.

Tom Burns
Bath New York



OLD CARNIVAL GLASS LIBRARY

"The Shape of Things in Carnival Glass", 110 pages, 200 items in full color, \$9.95-Donald Moore, 2101 Shoreline Drive, Alameda, Calif 94501

"Carnival Glass Series", each book has 100 different patterns illustrated and described-10 books in the series, books 1,2 and 3-\$3.00 ea, books 4 thru 10-\$3.50 ea. New edition 1981-82 price guide-\$5.00 pp, Northwood Pattern Glass-clear, colored, custard and carnival-\$9.95 plus 50¢ postage. Marion T. Hartung, Box 69, Emporia, Kansas 66801

"Carnival in Lights", A full color book on Carnival Lighting, including Gone With The Wind Lamps, Candle Lamps and shades-price guide included-\$11.95 plus postage, Helen Greguire, 103 Trimmer Road, Hilton, New York 14468

"Carnival Glass Tumblers"-Author Richard Owens-order from Mr. Don Brown, Wallace-Homestead Book Company, 1912 Grand Ave., Des Moines, Iowa 50303

"Imperial Carnival Glass"-The Early Years"-\$9.95, "Fenton Carnival Glass-The Early Years"-\$9.95, New price guide 1981-82 edition-\$3.95-"Millersburg The Queen of Carnival Glass"-\$8.95, "Rarities in Carnival Glass"-\$8.95, Author Bill Edwards. The books may be ordered from Collectors Books, Paducah, Kentucky.

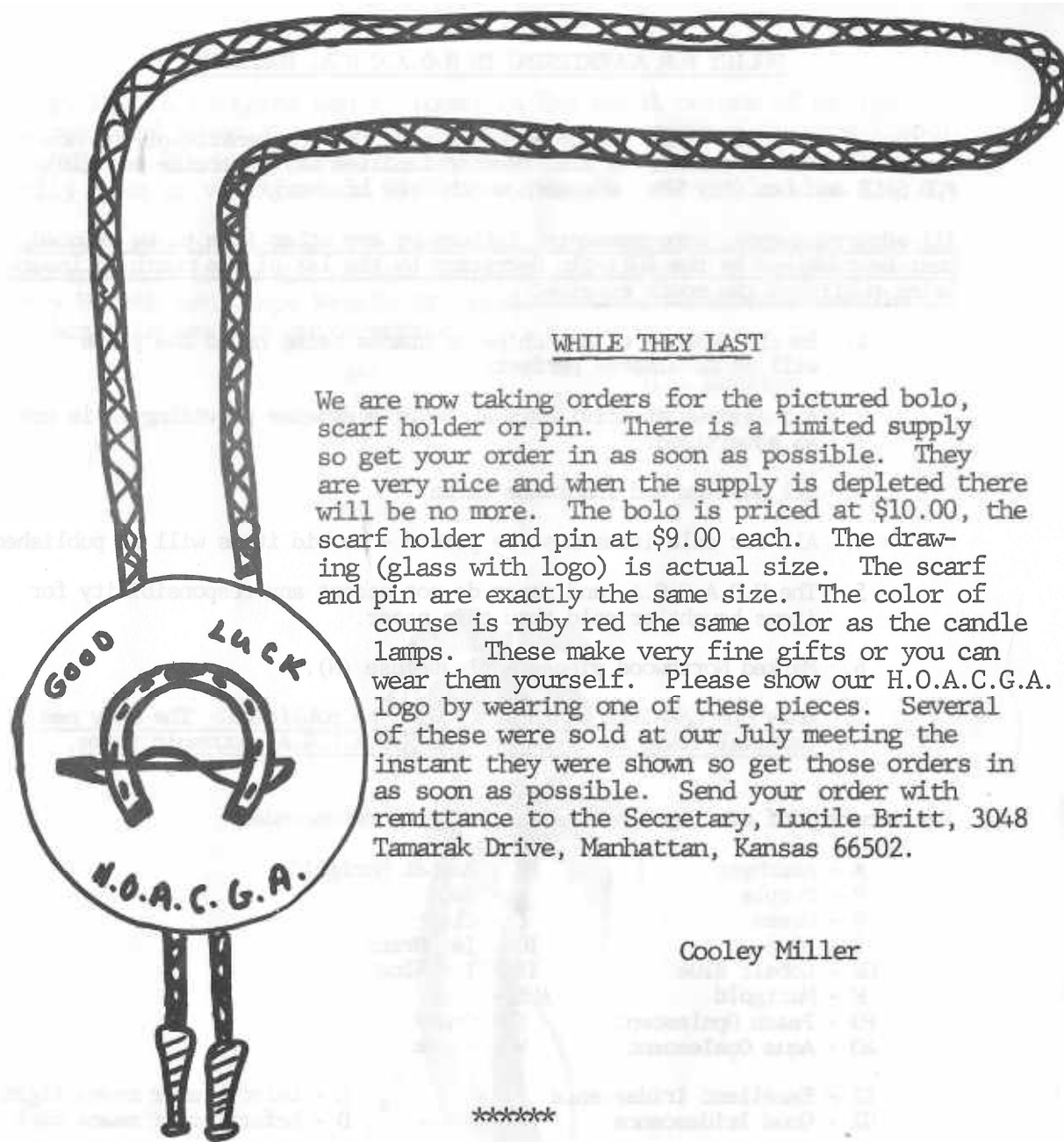
"Carnival Glass Price Guide", Sherman Hand & Charlotte Williams-\$5.95 pp. Order from Sherman Hand, 127 Olympic Circle, Vacaville, Calif 95688 or Charlotte Williams, 630 N Lower Sacramento Rd., Lodi, Calif 95240

Angela Hallam's 52 page fully illustrated paperback-first book to tell you about the English-made Carnival in your collection-can now be had for as low as \$4.85, surface postage, air **mailed** \$5.85 to WISE BOOKS, 82 Chart Lane, Reigate, England, RH2 7EA Get wise and be in the know about those English-made items of carnival glass you have so often been puzzled over.

OTHER REFERENCE MATERIAL

Presznick's "Encyclopedia of New Carnival and Iridescent Glass". A great reference book with color plates galore and prices, \$19.95. Reichel's "Modern Carnival Glass." 100 illustrated pages of Carnival made since the 1960's. Volume 1, \$4.00, Volume 2, \$4.95, Price Guide for both volumes \$2.50. Add \$2.00 for shipping and insurance. Theodore A. Parent, Box 596, RD 1, Canfield, Ohio. 44406

"Encore by Dorothy" books 1 and 2. A series of books on new reproduced Carnival Glass, giving information on the patterns and colors that are being reproduced. An invaluable asset to the old carnival collector, possibly saving him many dollars by knowing what has been reproduced. Price for each book is \$7.70 postage paid. Be sure to state which book you want. Dorothy Taylor, Box 11734, Kansas City, Missouri, 64138



WHILE THEY LAST

We are now taking orders for the pictured bolo, scarf holder or pin. There is a limited supply so get your order in as soon as possible. They are very nice and when the supply is depleted there will be no more. The bolo is priced at \$10.00, the scarf holder and pin at \$9.00 each. The drawing (glass with logo) is actual size. The scarf and pin are exactly the same size. The color of course is ruby red the same color as the candle lamps. These make very fine gifts or you can wear them yourself. Please show our H.O.A.C.G.A. logo by wearing one of these pieces. Several of these were sold at our July meeting the instant they were shown so get those orders in as soon as possible. Send your order with remittance to the Secretary, Lucile Britt, 3048 Tamarak Drive, Manhattan, Kansas 66502.

Cooley Miller

POLICY FOR ADVERTISING IN H.O.A.C.G.A. BULLETIN

We repeat the guide lines set up in years past for the benefit of the new members and as a reminder to all. Member families may advertise ten (10) FOR SALE and ten (10) WANT ads each month free of charge.

All advertisements, announcements, letters or any other item to be printed, must be received by the Bulletin Secretary by the 1st of the month to insure being published the month received.

1. In the absence of any chips or cracks being noted the piece will be considered perfect.
2. A 5 day return privilege at buyer's expense providing it is not as advertised.
3. All postage and insurance extra.
4. All for sale items must be priced - no bid items will be published.
5. The H.O.A.C.G.A. and paper do not accept any responsibility for items bought or sold thru this paper.
6. Marked Northwood pieces - please use (N).
7. Only OLD CARNIVAL GLASS items will be published.- The only new Carnival items accepted are the H.O.A.C.G.A. souvenir items.

For accuracy of description, the following is recommended:

A - Amethyst	PM - Pastel Marigold
P - Purple	R - Red
G - Green	C - Clear
B - Blue	IG - Ice Green
CB - Cobalt Blue	IB - Ice Blue
M - Marigold	AMB - Amber
PO - Peach Opalescent	S - Smoky
AO - Aqua Opalescent	W - White

EI - Excellent Iridescence	L - before color means light
GI - Good Iridescence	D - before color means dark

EXAMPLES: LM EI Brooklyn Bridge bowl \$250.00
 DP EI Good Luck bowl (N) small
 base chip 75.00

It would be appreciated if you will please use these codes suggested, it will be less confusing to everyone and also be helpful in the typing and set up of the bulletin.

FOR SALE

Joan Freeze, 4205 West 7th Ave., Kennewick, Wa 99336 PH 509-783-3935

R EI	Peacock & Grape 7 1/2 ftd bowl	400
IB EI	N Flute sherbets N 4 ea gold rim	50
W GI	Peacock & Urn compote rare Fenton	125
G EI	Hanging Cherries tumbler A on G Owens 19	250
PO EI	Ski Star 10 1/2 bowl sm wear in base	65
LM EI	Heavy Grape 8" plate	25
PO EI	Little Beads mini compote	45
M EI	Inverted Coin Dot tumbler Owens 101	75
DM EI	Curved Star epergne base with imbeded bolt	35
G EI	Propeller mini compote rare	30

Betty Moye, Rt 3, Gen Del, Nimitz, W. Va., 25978 PH 304-466-4524 after 8 PM. SASE for list

R EI	Basket with open lattice no yellow	300
G EI	Iris compote	50
M GI	Town pump 2 nicks	300
P EI	Wreath of Roses compote	45
PO EI	Wishbone and Spades 6 1/2 bowl	80
P EI	G/C hat pin holder	175
M EI	Daisy and Plume compote	50
W EI	Fanciful bowl collar base	85
CB EI	Funeral vase	125
G EI	Three Fruits bon bon 2 hndl	62

Louis T. Bradford, Rt 2, West Paducah, Ky 42086 PH 502-488-3005 after 5PM

P EI	N G/C 8 pc dresser set	1500
P EI	N G/C 2 pc breakfast set	175
P EI	N G/C cup and saucer	275
P EI	N G/C pitcher and one tumbler	275
P EI	N G/C banana ftd 11 1/2 x 7" bowl	225
P EI	N G/C covered compote large	400
W EI	N Peacock & Urn 7 pc ice cream set	650

P	EI	N Acorn Burrs 4 pc table set	550
P	EI	N Singing Birds 7 pc berry set	300
G	EI	N Memphis gold trim 3 pc table set	250

Eva Backer, 12 Sherwood Rd., West Hartford, Ct 06117 PH 203-232-1027

M	EI	Lustre Rose spocner	20
G	EI	Flute sherbert (N)	35
G	EI	Stippled Rays & Ribbon 9 1/4 bowl Feather & Hobstar ext Millersburg Hand pg 85	50
M	EI	Persian Medallion compote	35
M	EI	Octagen tumbler	25
M	EI	Stork & Rushes tumbler	20
M	EI	Fashion tumbler	30
M	EI	Stag & Holly footed 10 1/2	90
W	EI	Brocaded Acorns two handled bon bon gold trim	32
G	EI	Beads bowl 8" (N)	35

Jos Mello, 535 Fish Rd., Tiverton, R I 02878 PH 401-624-2174

M	EI	O T punch bowl & base no cups	100
M	EI	Horses head 3 ftd bowl	50
M	EI	Peacock Tail compote	15
M	EI	Birds & Cherries bon bon	30
M	EI	Imperial Grape wine stemmed	20
G	EI	Thistle bowl Horlacher written on back	65
B	EI	Holly hat	25
A	EI	Broken Arches punch cups 3 ea	20
A	EI	Scroll Embossed bowl	25
M	EI	Butterfly & Berry tumblers 5 ea	15

John D. Resnik, 4290 Jackson Ave., Culver City, Ca 90230 PH 213-839-1588

M	EI	Orange Tree punch set 8 pc	215
P	EI	Australian Swan 6" sauce dish	45
P	EI	Greek Key 8" bowl scarce	85
M	EI	Orange Tree breakfast sugar and creamer set	65
B	EI	Horsehead Medallion ftd bowl	95
M	GI	Horsehead Medallion flat bowl	48
G	EI	Fantail ftd bowl Butterfly & Berry ext	80
W	EI	Bushel basket pulled down	95
P	EI	G/C hatpin holder	165
M	EI	Heavy Grape Chop plate	135

SASE for list

Helen Nadeau, 18 Thomas Olney Common, Providence, R. I. 02904 PH 401-521-4581
after 5 PM

M	EI	Hobnail Feather punch cup 2 ea	25
S	EI	Fashion 9 1/2 bowl	45
P	EI	Memphis punch cups 2 ea	30
P	EI	Imperial Grape 10" bowl	30
P	EI	N Rays 10 bowl	30
B	EI	Fentonia sauce dish 2 ea	33
B	EI	Butterfly & Berry vase	35
PO	EI	Stipple Flower bowl	35
PO	EI	Ribbed Swirled vase	30

Rick Kojis, 2020 South 80 St., West Allis, Wi 53219 PH 414-327-0321 aft 4PM

A	EI	Millersburg Holly bowl near cut Wreath ext	49
M	EI	Persian Medallion rose bowl	33
W	EI	Dahlia berry dish maroon flowers	33
M	EI	Millersburg Blackberry Wreath 7" ruffled dish	24
PO	EI	Starfish compote	48
M	EI	Wreath of Roses rose bowl	28
PM	EI	G/C pie crust edge shallow bowl	24
M	EI	Plain Buttermilk goblet	22
P	EI	Double Stem Rose dome ftd plate	45
M	EI	G/C nappy	29

Virgil St. John, 1903 Hwy #18 E, Clear Lake, Ia 50428 PH 515-357-7354

W EI	Beaded Shell mug cracked rare	175
CB EI	Beaded Shell mug	125
A EI	Bushel basket N straight sides small nick on one ft	95
A EI	Millersburg Cherry sugar top	50
PM EI	Cosmos & Cane sugar top	50
AO EI	Daisy & Drape vase broken foot attached nice cabinet pc	50
AO EI	Drapery N rose bowl	225
AO EI	Fine Cut & Roses bon bon rough feet	225
P EI	Fishermans mug handle damage	75
M EI	Horseshoe shot glass tumbler	50

Mary Welch, 213 Alexander, Scotia, N Y 12302 PH 518-393-7748

DM EI	Blueberry tumblers 2 ea	35
M EI	Imperial Grape tumblers almost amber 2 ea	18
LM EI	Rambler Rose tumblers 3 ea	27
M EI	Rambler Rose tumblers 2 ea	27
M EI	Dandelion tumblers (N) 3 ea	35
G EI	Imperial Grape wines 2 ea	25
M EI	Octogan decanter & stopper	58
M EI	Lattice & Daisy tumblers 6 ea	15
P EI	G/C punch bowl base regular size	20
B EI	G/C punch bowl base med size	30

Send 2 stamps for lists of 375 items

Michael H. Bevill, 48528 Hawk, Selfridge A.N.G. Base, Mi 48045 PH 313-949-4766

P EI	Butterfly & Berry tumbler rare color	100
G EI	Stag & Holly 8 1/2 ruffled bowl scarce color	75
AQ EI	Knotted Beads 8 1/2 vase rare color	125
AO EI	Diamond Point 7" vase	225
R EI	Stippled Rays bowl	275
G EI	Butterfly & Berry tumbler	75
PO EI	Jeweled Heart 6" bowl	30
B EI	Butterfly & Berry tumbler	25
M EI	Signed Heisey 6" plate	25
R EI	Plume Panels vase	400

Edward Henderson, 1111 N College, Stuttgart, Ark 72160, PH 501-673-8757

P EI	Water Caraf Fenton Grape no stopper	100
M EI	Water Caraf Fenton Grape no stopper	80
CB	Fine Rib vases 2 ea	50
M EI	Imperial Grape pitcher	60
M EI	Rose covered butter dish has lid	55
M GI	Tulip vase marigold to clear 18"	75
M EI	Butterfly & Berry outside Bleeding Heart and two Tigers inside ftd	110
CB EI	Holly Spary 8" scallop bowl	60
M EI	Diamond & Thumbprint punch bowl & base	140
M EI	Diamond & Thumbprint punch base only	50

Mary Kesterson, 3020 Mesa Rd, Willow Tx, 76086 PH 817-441-8410

IG EI	Fruits & Flowers compote	150
M EI	Australian sm Swan bowl	75
CB EI	Painted Cherry tumbler	55
M EI	Maple Leaf creamer	45
CB EI	O.T. Scroll tumbler	60
PM EI	Palm Beach tumbler 2 ea	75
P EI	Peacocks on Fence bowl	145
G EI	Stag & Holly spat ftd bowl	125
P EI	Wishbone bowl	145
P EI	Town Pump (N)	495

Dick Wetherbee, 847 Stafford St., Rochdale, Ma 01542 PH 617-892-4420 aft 6pm

P EI	Raspberry milk pitcher (N) sm crack handle	85
M EI	G/C 8 1/2 bowl w/basketweave yellow tint	18
G EI	Imperial Grape wine decanter not stopper	25
LM EI	Floral & Grape water pitcher 2 tumb	58
PO EI	Stippled Petals dome ftd 2 sides up banana boat	85
M EI	Leaf & Beads rosebowl mfg crack	18
P EI	Fentons Heavy Grape 10 1/2 master berry	72
G EI	Louisa rose bowl sm chip under rim	12
M EI	Horseheads 7 1/2 bowl Jack in Pulpit shape	58
P EI	Embossed Scroll 7 1/2 bowl a beauty	35

Jean Smith, 3350 Summerset Wy, Boise, Idaho 83709 PH 208-362-9220

Three appraisers can not identify for sure. They say "Extremely lovely piece-probably in the stretch family-and one of a kind. Yet it has a "pontil"-which confuses. M EI 10" ruffled hightly irrid rays bowl 110 or help identify,

P EI	Imperial Grape wine decanter no stopper sm blimish bottom	95
B EI	Fine Rib 15" vase	65
M EI	Patterned shade frosted electric 7 1/2	65
Clambroth EI	Smooth Rib bowl	60
Clambroth EI	Frosted Block 9" flat plate	55
A EI	Rustic vase 9"	40
M EI	Iris pattern Millersburg compote satin finish 7"	75

Norma Morrison, 3912 Pennsylvania Ave., Eureka, Ca 95501 PH 707-443-1319

P EI	Strawberry 9" plate	50
P I	Three Fruits ftd stippled bowl with ext pattern	40
A EI	Peacock Tail compote	25
M EI	Hobstar Flower compote	25
B GI	Lotus & Grape 6 1/2 ftd candy dish	30
A EI	Grape & Cable sml stemmed ice cream dishes set of 6	150

Ralph Blankenbecler, Rt 3 Box 46, Coeburn, Va PH 703-395-2229 -

P EI	Greek Key tumbler nick out of base	35
P EI	Fishermans mug	100
P EI	G/C N bon bon	50
P EI	N G/C powder box with lid	100
M EI	Forget Me Not water set Hands pg 35	325
G EI	Vintage epergne one lilly	100
P EI	Vintage 6 ftd rose bowl flat top	100
CB EI	N Chalice Double Loop 2 ea	60
M EI	Flute candle ticks 2 ea	40
M EI	Orange Tree stemmed wine	25

Lee Briix, Rt 1, Hemessey, Okla 73742 PH 405-853-2276 after 5 PM

P EI	Vintage 7 1/2 bowl	35
M EI	Orange Tree ftd tumbler	22
M EI	Orange Tree sherbert	22
A EI	Blackberry Wreath 6" bowl	50
P EI	File 8" bowl	38
M EI	Waffle Block punch cups 4 ea	11
M EI	474 punch bowl base	12
G GI	G/C N berry bowl	38
G EI	G/C 6 1/4 bowl	40
P EI	Top-O-The-Walk hat pin	55

Mary Ellen Warren, 9623 Hunters Lane, Spring Grove, IL 60081 PH 815-675-2112 after 6 pm

M EI	Waterlily & Cattail toothpick	75
W EI	Cherry Chain small berry bowl	38
PO EI	Little Beads stemmed sherbert	45
M EI	Horse Heads rose bowl	95
A EI	Millersburg Holly sprig 2 handled nappy	40
G EI	Millersburg Blackberry Wreath bowl 8 1/4	50
P EI	G/C plate 9"	75
M EI	Stippled Peacock on The Fence bowl	60
R EI	1976 HOACGA whiskey decanter and 6 shot glasses	165

Patrica Craver, Box 8015, Allandale, FL 32023 PH 904-788-5315

S EI	Fashion tumblers 3 ea	75
P EI	Greek Key Tumbler (N)	100
P EI	Chataline tumbler cracked	75
M EI	Beaded Shell mug	95
G GI	Sailboat dish	75
P GI	G/C perfume no stopper	175
P EI	G/C cologne bottle pair stoppers damaged	300
M EI	G/C ice cream bowl	80
CB EI	Persian Medallion 10 1/2 chop plate	225
Aqua EI	No. 270 compote	50

Linda Halfacre, 1618 McKinley, Beloit, Wi 53511 PH 608-362-6109

PM EI	Three Fruits ftd bowl	40
G EI	Captive Rose plate	95
M EI	G/C plate super	70
W EI	Daisy & Drape vase	90
W EI	Cosmos & Cane tumblers no harm nip on one base pair	200

Charlotte Tweddell, 4908 Darnton Ln., Louisville, Ky 40216 PH 502-447-1670

M EI	Wide Panel goblets 2 ea	25
M EI	Wide Panel handled pickel dish	25
A EI	Butterfly & Berry 8" bowl inside crack Fantail Int	35
S EI	Fentonia 9 1/2 bowl	75
M EI	Persian Medallion bon bon	30

Singleton & Cheryl Bailey, Box 95, Loris, S. C. 29569 PH 803-756-7495
After 6 803-756-7495

B EI	Peacock at Fountain orange bowl	225
P EI	G/C ftd plate	75
P EI	G/C handled bon bon	45
P EI	8" plate two sides up	85
M EI	6" saucer two sides up	50
B EI	Orange Tree powder jar w/lid	85
P EI	Peacock at Fountain 7 pc berry set	175
M EI	Goodluck plate N	125
B EI	Peacock at Fountain 7 pc water set all tumb flared	500
B EI	Peacock at Fountain tumblers 4 ea	35

WANTS

Al & Wendy Rettke, 14226 East 143rd Lane, Burnsville, Mn. 55337
PH 612-432-7489 collect

DM EI Singing Birds mug stippled
G EI Singing Birds mug stippled
Lavender Singing Birds mug

Louis T. Bradford, Rt 2, West Paducah, Ky 42086 PH 502-488-3005 after 5PM

P EI Beaded Shell water pitcher

Eva Backer, 12 Sherwood Rd., West Hartford, Ct 06117 PH 203-232-1027

Helios Green Imperial Star of David bowl

Jos Mello, 535 Fish Rd., Tiverton, R. I 02878 PH 401-624-2174

A Acorn Burr tumbler 1
A Wreath of Roses base to punch set
G Imperial Grape punch cups 3
M Peacock at The Fountain pitcher to table set
P Imperial Grape punch cups 6
M Acorn Burr punch bowl top
A Wide Panel epergne base
B Lattice & Daisy water pitcher

Rick Kojis, 2020 South 80 St., West Allis, Wi 53219 PH 414-327-0321 aft 4PM

Any Northwood AO bowl and plates
M Zippered Loop finger lamp
IB N Dandelion tankard pitcher
M Millersburg Rose Column vase
Any color Millersburg pipe humidore

Mary Kesterson, 3020 Mesa Rd., Willow Tx 76086 PH 817-441-8410

B EI Mikado compote large
C EI Shriner champagne
W EI Grape Delight nut bowl
AO EI Daisy & Drape vase
P EI Dahlia sugar top
P EI Drapery Rose bowl
B EI Bushel basket (N)
M EI Brooklyn Bridge bowl
IB EI Grape Arbor tumbler
R EI Dragon & Lotus spat ftd bowl

Joe & Sue Rhodes, 2491 Diane Dr., El Sobrante, Ca 94803 PH 415-223-4639

M EI Imperial wine decanter stopper
M EI Imperial wine glasses need 4

Barbara Farmer, RD 5, Box 462, Wheeling, W. V. 26003 PH 304-336-7689

IB EI Basket (N)
G EI Basket (N)
A EI Fine Cut & Roses rose bowl

44

Mrs. Marion Hartung, Box 69, Emporia, Kansas 66801

Cobalt base for Peacock at The Fountain butter. Must be plain with small panels

Patricia Craver, Box 8015, Allandale, Fl 32023 PH 904-788-5315

W EI Orange Tree punch base

Tracy Corley, Box 1432, Orange Tx PH 713-883-2914

PO EI Fishnet base for epergne

Michael H. Bevil, 48528 Hawk, Selfridge A.N.G. Base, Mi 48045 PH 313-949-4766

Any hobstar & Fruit pieces
G Panther bowls
Damaged water pitchers
Any color Daisy & Drape vases will consider damaged
Flute & Cane wines
M Fruit Salad punch bowl base
AO damaged pieces
R damaged pieces
Amber Fenton pieces

Dorothy Thomason, Rt 1 Bx 51, Lipin, Tx 76462 PH 817-646-2449

G EI G/C sm ruffled berry bowl (N)
CB EI G/C sm ruffled berry bowl (N)
G EI Imperial Grape Tumblers Helios
P EI G/C card tray (N)
P EI G/C powder jar cover (N)
M EI G/C powder jar cover (N)
P EI Stopper for Imperial Grape decanter

45

Cato S. Hightower, Rt 2 Box 62A, Lipin Tx 76462 PH 817-646-2700

- M EI Vintage stemmed wines
- M EI Acorn Burrs 10" master berry bowl (N)
- P EI G/C one handled nappy (N)
- A EI G/C 6" ruffled berry dishes (N)
- P EI Grape Delight rose bowl 6 ftd
- A EI G/C master berry bowl ruffled (N)
- M EI G/C 6" ruffled berry dishes (N)

Charlotte Tweddell, 4908 Darnton Ln., Louisville, Ky 40216 PH 502-447-1670

- M Ten Mums pitcher
- M Lea creamer
- G Imperial's helios bowl

Singleton & Cheryl Bailey, Box 95, Loris, S. C. 29569 PH 803-756-7495
after 6 803-756-7495

- Big Fish or Trout & Fly
- Millersburg Peacock pieces
- Courthouse bowl
- Seacoast pin tray
- Any Millersburg compotes

ADDITIONAL THE 1981 H.O.A.C.G.A. SOUVENIR

GRAPE & CABLE CANDLELAMP IN RUBY RED



ORDER FORM FOR 1981 H.O.A.C.G.A. SOUVENIR

PLEASE MAKE CHECKS PAYABLE TO H.O.A.C.G.A. AND SEND THEM TO:

MRS. LUCILE BRITT
3048 TAMARAK
MANHATTAN, KANSAS, 66502

WILL PICK UP _____ 1981 SOUVENIRS AT \$150.00 A PAIR TOTAL: _____
(INDIVIDUAL PRICE \$ 75.00)
ADD \$3.00 POSTAGE FOR EACH LAMP

PLEASE MAIL _____ 1981 SOUVENIRS AT \$150.00 A PAIR TOTAL _____
(INDIVIDUAL PRICE \$ 75.00)
ADD \$3.00 POSTAGE FOR EACH LAMP

PLEASE PRINT FULL NAME AND ADDRESS: _____

PLEASE RETURN THIS ORDER FORM ALONG WITH YOUR PAYMENT IN FULL TO THE ABOVE ADDRESS. THANK YOU AND REMEMBER THERE IS ONLY A LIMITED AMOUNT BEING MADE SO THEY WILL BE GOING FAST.

SPECIAL NOTICE

AT THE MARCH MEETING OF H.O.A.C.G.A. IT WAS DECIDED BY MAJORITY VOTE TO ALLOW EACH MEMBERSHIP TO PURCHASE TWO PAIRS OF LAMPS OR A TOTAL OF FOUR SINCE THERE HAVE BEEN SO MANY PAIRS SOLD AND INQUIRIES AS TO WHETHER A PAIR CONSTITUTED ONE PURCHASE AND IF SO IF THEY WERE ENTITLED TO ANOTHER PAIR.