

H. O. A. C. G. A.  
DONALD E. KIME  
BULLETIN SECRETARY  
1202 W. 4th ST.  
HAYSVILLE, KANSAS 67060

October 1981  
S M T W T F S  
4 5 6 7 8 9 10  
11 12 13 14 15 16 17  
18 19 20 21 22 23 24  
25 26 27 28 29 30 31





## Heart of America Carnival Glass Association, INC.

MEMBERSHIP JUNE TO JUNE  
\$10.00 PER COUPLE OR SINGLE

PUBLISHED 15th OF  
EACH MONTH

PRESIDENT: GEORGE O. MCGREW JR.  
6800 WOODWARD  
OVERLAND PARK, KANSAS 66204  
913-262-8822

VICE PRESIDENT: GEORGE BOLLES  
5204 CATALINA  
SHAWNEE MISSION, KANSAS 66205  
913-432-5438

TREASURER: ELIZABETH BOLLES  
5204 CATALINA  
SHAWNEE MISSION, KANSAS 66205

SECRETARY: LUCILE BRITT  
3048 TAMARAK DRIVE  
MANHATTAN, KANSAS 66502  
913-539-1933

BULLETIN SECRETARY: DONALD E. KIME  
1202 W 4TH ST.  
HAYSVILLE, KANSAS 67060  
316-524-3123

### IMPORTANT NOTICE

1982 SOUVENIR

At the September 27 meeting, the estimated cost for the "Wishbone Epergne" was presented to the members present. The cost charged by the company making the mold was estimated at \$8,000. The pouring of the Epergne itself was estimated at between \$33 and \$35 each (600 qty), resulting in a cost of \$21,000. The total cost of the Epergne would be in the vicinity of \$29,000.

We realize that the Epergne would be expensive but this price exceeded even our high estimates. A lengthy discussion was held as to what course to take in this matter. At this time, we have a balance of cash available in the amount of \$18,000 with no large amount of funds to be acquired in the next several months. In fact, we will pay out considerably more than we can take in.

It was unanimously voted to table the Epergne, as we did the Candle Lamp, for a year. Since the economy is showing no signs of turning around for sometime, we felt that to have two consecutive souvenirs that would cost approximately \$75, it would not be wise to gamble on the future monetary stability of the Club.

It was also noted that the Club has a major expense in the inserts for the notebook which will cost about \$9,000, but will spread out over a three year period.

The meeting was then opened to suggestions for a different souvenir. A motion was made to reuse the CORN VASE mold and was approved by the majority present. Several colors were suggested with ICE BLUE receiving a strong majority vote.

We hope that all who were anticipating the Epergne will understand our commitment to the Club as a whole and realize the risk we would have taken with this souvenir at this particular time.

George O. McGrew, Jr.  
President H.O.A.C.G.A.

H.O.A.C.G.A. SEPTEMBER MEETING

After a very delightful lunch at the home of George & Linda McGrew, our President George McGrew called the meeting to order at 2 PM on September 27, 1981. The President gave a welcome to all present.

The Secretary, Lucile Britt read the minutes of the last meeting. They were approved as read.

Elizabeth Bolles, our Treasurer, gave her report as follows: Balance on hand 8-24-81 \$16, 942.22, Receipts of the month \$2,202.90, expenses \$1,158.97, balance on hand 9-24-81 \$17,986.15. The report was approved as read and placed on file for audit.

President McGrew reported that the sixteen little mug favors had been shipped to out of town members that were at the banquet. The balance of our mugs are to be poured by Mosser around November 1. The least he could make is 75. John Britt made a motion that the extra mugs be sold for \$10.00 each - one per family on a first come basis. Rosa Grissom seconded the motion. It carried.

Due to the absence of the souvenir chairman, George McGrew reported the cost on the wishbone epergne will be for two molds \$8,000.00, Fenton for making the epergne \$21,000.00 for making 600. After much discussion Sylvia Borris made a motion to use the Corn vase, as we have that mold, as our 1982 souvenir. Janet Zahn seconded the motion, It carried. We then voted on four colors; Aqua Opal, Ice Blue, Peach Opal and Marigold. Our Souvenir will be an Ice Blue Corn Vase for 1982. It will also have "Fenton" signature in the base.

John Britt reported that while he was in Hartville, Ohio in August, at the flea market he was able to purchase the 1980 green and 1981 vaseline opal H.O.A.C.G.A. table favor mugs. The dealer is an employee of Mosser. President McGrew is to write Mr. Mosser.

Mr. Grissom said the difference in cost between nine pictures on a page and twelve pictures on a page of the water pitchers was only \$250.00. It was decided to stay with the nine on a page and make a third of the pitchers per year for three years.

President McGrew suggested we seek a copyright on our notebook. Mr. Bolles is to secure the necessary papers.

Robert Grissom suggested we maybe put out a colored brochure to sell the remaining 100 lamps. He is to check with Mr. Fenton as to price.

Janet Zahn, convention chairwoman, reported she has been checking into bands and would like for other members in the K. C. area to listen to some of them.

October 5 to 11 is carnival glass week and George McGrew said he is going to set up at the Antique Center for three days. He also reported that a reporter was out for an interview and it should be in the paper Wed or Thur.

Bob Grissom moved that George McGrew place an advertisement in the local paper about carnival glass week and also that George hire some one to haul the showcase from Cooley Millers to the Antique Mall and then to George's home. John Britt seconded the motion. It carried.

Richard Peterson of Clarkfield, Minnesota in a letter to President McGrew suggested that the club recognize our educational writers with a plaque or mug. George McGrew made a motion that the Board decide the award each year for the contributors of one educational article or more in the bulletin. George Bolles seconded the motion. It carried.

Our next meeting will be October 25, 1981 at the Mission-Overland Park Holiday Inn, Overland Park, Kansas at 2 PM.

John Britt moved we adjourn. Seconded by Charles Mochel.

We want to thank George and Linda for their gracious hospitality.

\_\_\_\_\_  
Lucile Britt, Secretary

\_\_\_\_\_  
George McGrew, President

\*\*\*\*\*

AUCTION BROCHURE STILL AVAILABLE

The Cooley Miller auction brochure (auction that was held during the H.O.A.C.G.A. convention) is still available at a cost of \$2.50 This is an excellent brochure which can be kept for reference material. Remember someday these brochures will be history as some of the old books we are now finding on the original advertising material from the glass makers of the early years. The date of the brochure is April 4, 1981. If you would like a copy of this material please send your \$2.50 to Lucile Britt, 3048 Tamarak Drive, Manhattan, Kansas 66502.

\*\*\*\*\*

JUST 3 MORE MONTHS LEFT

We have some 1980 H.O.A.C.G.A. souvenirs (ice green hat pin holders) that have not sold.

Any member may purchase as many as they would like, at the regular price of \$35.00 plus \$2.50 postage. This will be on a first come first served basis so now is your chance to purchase more of these 1980 souvenir pieces.

All 1980 souvenirs that have not been sold by January 1, 1982 will be destroyed.

Please send your order with remittance to the Secretary, Lucile Britt, 3048 Tamarak Drive, Manhattan, Kansas 66502.

\*\*\*\*\*

JUST A THOUGHT

It seems as though the black and white pictures are reproducing in the bulletin much better than the colored ones are. Perhaps just for some experimenting you might like to send me a black and white photo instead of the color and perhaps we can see it much more plainly. This is only a suggestion.

Editor

\*\*\*\*\*

4

RED CANDLE LAMP - 1981 SOUVENIR

The 1981 H.O.A.C.G.A. souvenir was the red Grape & Cable candle lamp made by Fenton Glass Co. It is an exact duplicate of the old Northwood Grape and Cable candle lamp, except the H.O.A.C.G.A. logo, the Horseshoe with the riding crop, has been molded into the shade and the club's initials go down the candle stick. The old Grape & Cable candle lamp has always been a very desirable piece with collectors. I believe it is one of the nicest souvenirs that has ever been made. Just think, you can have a Northwood piece made by Fenton. You will not find that very often.

It has always been the intention of H.O.A.C.G.A. to produce a souvenir that the members and collectors would be proud to have in their collection and at the same time be a piece of glass that would be a good investment and you could get a return on your money. I believe each person that has purchased one of the past souvenirs has been able to sell their's at a profit when sold.

There is less than 100 of these souvenirs left to be sold; so, if you are one of those members who has not ordered yours yet, then why don't you send in the order form now.

Your purchase of a candle lamp souvenir is not only a good financial investment for you but is also a good investment in helping to secure carnival glass.

Robert Grisson  
1981 Souvenir Chairman

\*\*\*\*\*

Florence Mullins will enter the hospital this week for surgery and Connie Katowitz will enter the following week for surgery. We wish them the best and hope they will be home soon from the hospital. Our thoughts and prayers be with you.

\*\*\*\*\*

5



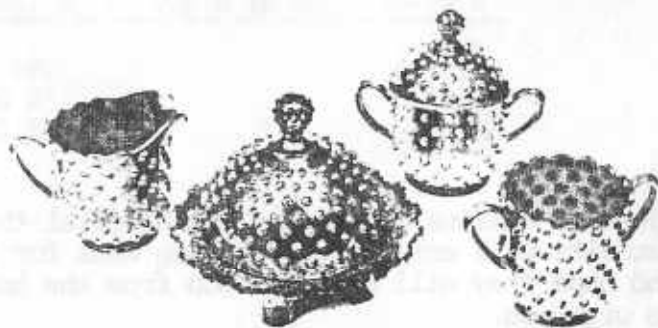
21. INVERTED FEATHER

# Table Sets

FILLERS

The table sets fillers for your notebooks are available now. The fillers are free to all members but we need a dollar (\$1.00) for postage and packing. Send your dollar to Lucile Britt, 3048 Tamarak Drive, Manhattan, Kansas 66502.

Your notebook now should have Punch Sets, Mugs and Table Sets to be up to date. If you are short the mug fillers send a dollar to Lucile Britt also.



20. HOBNAIL



A FIND

While on a short vacation this past summer, we left the "tourist traps" behind us and wandered off onto the back roads of the Arkansas Ozarks.

Our main objective was the peace and calm of this beautiful country. But who could pass by a small, hand-lettered sign saying "Antiques" and pointing down an over-grown trail in the middle of a pine woods?

After two or three miles without seeing any habitation, we finally came to a small clearing. Here was a neat modern log cabin-filled with sunny windows. In we went to find shelves and tables full of old glass and china of many varieties. There was a small selection of carnival-all old and not mixed with reproductions as was true of many village shops.

My eye went immediately to the piece shown in the photo. True, it was a familiar pattern-"Fenton's Flowers", but previously we had seen this only on the footed rose bowl. This has the same three twig feet as the piece shown, but curves in at the top with an edging of scalloped points leading to an opening in the center.

Here we have a nut bowl-definitely made from a different mold. The piece is round, has the same feet and pattern as its twin rose bowl, but it stops short of the scalloped top, with a smooth band one-half inch wide all the way around.

This is definitely NOT a broken rose bowl smoothed off, as the edge is smooth and evenly iridized, as are both the interior and exterior.

The nut bowl was a "first of a kind" for me. It is on cobalt blue with typical Fenton iridescence. It stand- 4 1/2" high, and the top opening measures 5".

It was reasonably priced and now stands proudly in my small private collection, bringing memories of a happy day.

Marion T. Hartung

\*\*\*\*\*



### EDUCATIONAL TUMBLER SERIES

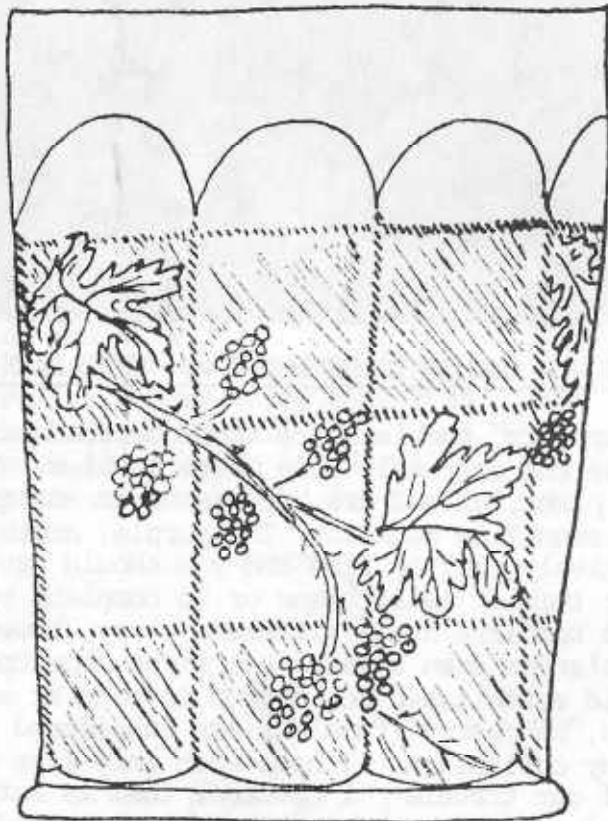


RASPBERRY - - COMMON IN MARIGOLD - - VERY RARE IN WHITE

Two Northwood "Raspberry" tumblers are shown here, one in the very common marigold along side the extremely rare white tumbler. Marigold "Raspberry" tumblers are very plentiful and are often seen in antique shops, auctions, antique shows and even flea markets. The purple, amethyst and green tumblers are comparatively easy to find and you should have no trouble finding these for your tumbler collections or to complete your water sets. The pastel colored tumblers are a different story, however. Occasionally a pastel blue tumbler or even a water set might show up. This usually happens when an old established collection is sold at auction or at private sale. Pastel blue "Raspberry" tumblers are considered rare and they add a lot of color to any collection. I have seen only five white "Raspberry" tumblers in all of our travels. I consider them as extremely rare. Any "Raspberry" piece in pastel green is extremely rare and is also very desirable. The water pitchers and the smaller sized milk pitcher are also very hard to find in any of the pastel colors. A number of years back, I heard of a cobalt blue "Raspberry" water pitcher that existed on the west coast. Since then I have searched far and wide for a cobalt blue "Raspberry" tumbler. The search finally paid off, as we found one of these

extremely rare tumblers in a shop on our way to Florida last fall. It is in the true brilliant Northwood cobalt blue and as far as I know, it is the only one ever reported by any collector or dealer in the cobalt blue color. No doubt there are others around, but I have never heard of one. I suspect this article might uncover another one or two in this color, but I am sure they won't be very many found. We have the "Raspberry" tumbler in eight different color shades. It is quite possible that it could also have been made in lavender and smoke since both of these colors, even though rarely found, do exist on some Northwood patterns.

BLACKBERRY BLOCK



MANY CONFUSE THIS ONE FOR THE RASPBERRY

Be careful not to confuse our featured "Raspberry" tumbler with the Fenton Blackberry Block pattern. Most "Raspberry" tumblers will carry the underlined "N" in a circle that is placed in the center of the inside base.

The "Raspberry" tumbler has eighteen narrow inside panels but is perfectly round and has no panels on its outside surface. It has a two row band of basketweave around the bottom part of the tumbler. The Blackberry Block on the other hand, as shown in the sketch, has nine panels placed around the outside of the tumbler. Each panel contains three blocks and each block is completely framed with a cable.

This Northwood "Raspberry" tumbler article is the 45th in this series. It has been some time now since we have brought you a Millersburg tumbler, so next month we will discuss the popular and highly sought after Perfection tumbler.

John & Lucile Britt

\*\*\*\*\*



## PICTORIAL PATTERN PARADE

During my years of collecting carnival glass, I have found that the following three punch set patterns are probably three of the most confusing patterns to carnival glass collectors, especially to new collectors. No doubt, the chief reason for this is that they all carry a wide variety of fruits in their design. Another reason for confusion is that different authors called them by different names in their early research work. I take my hat off to all these early researchers such as Marion Hartung, Rose Presznick and Sherman Hand who in many cases probably only had a lone cup in which to designate a pattern name. The bowl or the base could well have shown up at a much later time. For instance if you were to name the "Many Fruits" pattern from the punch cup alone, you certainly would not call it "Many Fruits" as it contains only the grapes in its design. Further research in recent years has also brought out a lot of interesting information and facts that our early writers did not have at their disposal. With these things in mind I will try, to the best of my knowledge, to clear up some of the confusion that these three patterns have caused.



### MANY FRUITS

Of the three punch sets mentioned below, "Many Fruits" will be found the most often. It is called "Many Fruits" by Sherman Hand in his book #1 - - "Colors in Carnival Glass". This punch bowl is also shown on the cover of Hartung book seven and described on page 129 of that book. The "Many Fruits" bowl is very massive, heavy and highly ornate. Cherries are shown on the inside of the bowl, while grapes and peaches fill out the design on the outside. On the base of the set, only the cherries are used. The base is iridised on the inside as well as the outside. This enabled the housewife to use this beautiful piece as a compote when it was not in use in the punch set. You can find the base to this set with both the ruffled edge and also with a round edge which has no ruffles at all. The use of



the base to this punch set as a compote, which put it into use more continuously, no doubt led to more breakage to this part of the set. I have noticed any number of these massive bowls that were without a base. Remember, if you have the bowl and are looking for the base - - the correct base for your bowl will not carry the peaches and grapes as does the bowl itself. It will only show the cherries, which are arranged around the bottom of the base. To add more confusion to this beautiful set, the cups have only the grapes in their pattern make up. Many people call these cups "Vintage", but they definitely belong to the "Many Fruits" set. It is also unusual for such a large punch bowl to have such small cups. They are much smaller than most punch cups such as a Memphis, Four-70-Four and Grape & Cable for example. "Many Fruits" sets can be found in deep purple, Amethyst, cobalt blue, marigold and rarely in frosty white. The white and cobalt blue sets are considered very rare and certainly would be hard to find. This pattern was made only in the punch set.

For many years Northwood was considered the maker of this fine set, even though no pieces were ever found with his famous underlined "N" in a circle. Recent research has proved this pattern to have been made by the Dugan Glass Company at the old Northwood-Dugan-Diamond factory of Indiana, Pennsylvania. Chards of this pattern were found at the Indiana, Pennsylvania factory site. Since Northwood left this factory before carnival glass was ever made would seem to place it as being made by either Dugan or Diamond. Further research by William Heacock and others has brought out a report from a 1911 trade journal describing Dugan's "iridescent ware" displayed at the annual Pittsburg, Pennsylvania show, a show that was held for glass factory representatives to show off their glass wares for the current year. This report stated that Dugan was displaying two samples of punch bowls that radiated the colors of the rainbow in peaches, grapes and other fruit. The high foot of the punch bowl was reported to be reversible. This 1911 report along with chards of this set found at the old Indiana, Pennsylvania factory site designates "Many Fruits" as definitely a Dugan pattern.



MULTI-FRUITS AND FLOWERS

"Multi-Fruits and Flowers" is Sherman Hand's name for this super fine punch set and it is generally known by that name today. This set is definitely Millersburg and was made at the old Millersburg factory of Millersburg, Ohio. This set differs from the "Many Fruits" set in that the pattern on the bowl is duplicated on the base and also on the punch cup. It carries a wide variety of fruit including grapes, cherries, peaches, berries and pears. The base is iridised on the inside and it could also be used as a compote. The cups are somewhat larger than those of the Many Fruits set. Some interesting points about this pattern in addition to it being rare are: (A) while it is usually found in amethyst, green and marigold, a cobalt blue set has recently shown up. Cobalt blue in "Multi-Fruits and Flowers" as well as most other Millersburg patterns, is extremely rare. (B) The punch bowl to this beautiful set is known where the bowl cups in like a rose bowl. This "cupped in" type or tulip shape is more rare than the ones that flare out like the set shown in our photograph. The cobalt blue set mentioned above is of the tulip shape which makes it much more rare. (C) This pattern was also made in a water set, which is indeed more rare than the punch set. No cobalt blue tumblers or pitchers have ever been reported, but they are known in amethyst, green and marigold. "Multi-Fruits and Flowers" water pitchers and tumblers are extremely rare. The punch set and water set can be seen in color in Bill Edwards book on

Millersburg glass "Millersburg, the Queen of Carnival Glass". The punch set is shown in Sherman Hand's book 2 - page 25 in color, It is also shown in color in Don Moore's book "The Shape of Things". All of these books are in color and should be in every carnival glass collectors library.

Another interesting piece made in this pattern is the little stemmed sherbert. It is a fantastic piece of carnival glass and is highly sought after.



FRUIT SALAD

The "Fruit Salad" (Hartung book 4 - page 72) is seldom ever seen in a complete punch set. The peach opalescent set in this pattern is one of my favorite carnival glass punch sets. I am fortunate enough to own a "Fruit Salad" punch cup and only a select few are lucky enough to own a "Fruit Salad" peach opal punch cup and only a select few are lucky enough to own a complete "Fruit Salad" punch set in that color. I also have punch cups in marigold and amethyst, so the "Fruit Salad" set was made in those colors also. Of the three sets described in this article, this is the only

one to contain the pineapple in its motif. The pattern also contains grapes and cherries. "Fruit Salad" is also known as Multi-Fruits (Hand book 2 page 25) and is shown in color on the front cover of that book. The "Fruit Salad" punch cups differ somewhat from other punch cups in that they are lower and wider. They also flare out a little bit more than other cups which you can detect from the photograph shown here.

This set was once considered to have been made by Millersburg by some collectors and authors. Today, collectors in general have discounted that theory. Most of our writers and collectors hesitate to name the maker of the "Fruit Salad" punch set. One important fact is that it was made very like the "Orange Peel" pattern, (Hartung book 4 - page 74). But who made the "Orange Peel" pattern? The handle, shape and general design of these two pattern's except for the fruit on the "Fruit Salad" set, are identical even to the stippled background and the ground base on the punch cups. Due to the fact that I have seen the Orange Peel cup with a paper sticker containing "Westmorland Speciality Glass Company" placed on the base of the cup and along with the fact the "Fruit Salad" set was reproduced by Westmorland, I am going to guess that the "Fruit Salad" pattern was made by Westmorland. The peach opalescent color on a Westmorland piece of carnival glass still has me a bit baffled.

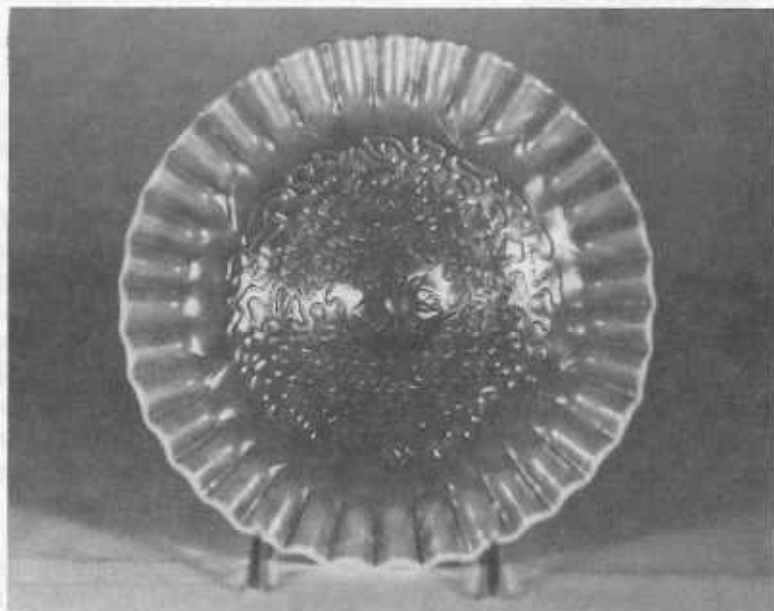
In any case, the "Fruit Salad" punch set is a beautiful set, especially so in the peach opalescent color. I am sure it would be next to impossible for any collector to pry one of these peach opalescent "Fruit Salad" sets loose from the very few collectors who now own one of them.

I hope that this discussion and pictures shown here will be of some help to many collectors who might have been confused on these three patterns. (Note) All these punch bowls described above can be seen in color in the H.O.A.C.G.A. note book filler on punch sets. It also shows the "Multi-Fruits and Flowers" with the rare cupped in or tulip top that is mentioned above.

Pictorial Pattern Parade  
by John & Lucile Britt

# Carnival Cameos

BY DONALD MOORE



SOUTACHE - This pattern takes its name from a braid that was widely used as a trimming during the period when Carnival was in its heyday. It has been attributed to Northwood, but this is doubtful, as the only pieces I have seen were peach opal, and it is now contended that Northwood made no Carnival in this color. No pieces, as far as I know, have been found with a signature. This pattern comes in a 9½" dome footed bowl and the same bowl flattened into a so-called dome footed plate, as shown here. I have never seen or heard of either a collar base bowl or plate. This is a difficult pattern to find. The ruffled dome footed plate will sell for around \$150 and the bowl for about half that amount.

MILLERSBURG NOTES # 5 - Bill Edwards

## MILLERSBURG CHERRY

Known in more shapes and variations than other Millersburg patterns except Hobstar and Feather, Millersburg Cherry is one of the four basic patterns on which the company founded its business.

One very good reason for the success of the Cherry pattern is its realism. Each stem of drooping fruit is so artistically designed and the minute detail of scaling on the stems, veining and stippling on the leaves adds so much to the detail.

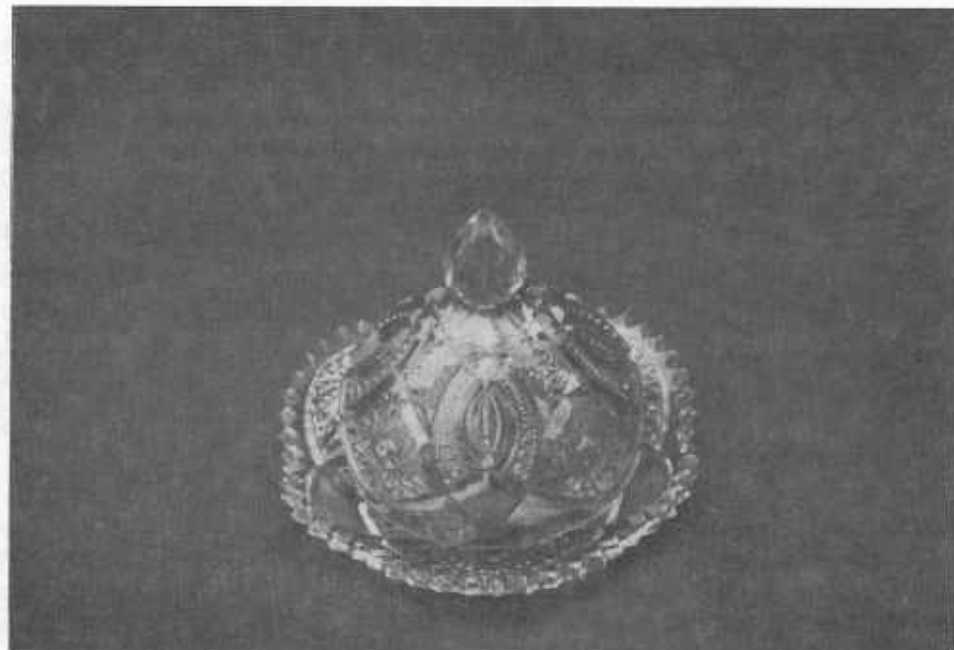
Millersburg Cherry is found in bowls of all sizes and shapes, small and large plates, a bowl variant with hobnail exterior in both large and small sizes, a water set, a four piece table set, a milk pitcher, a very rare powder jar that is lidded, a compote, a berry set, and a compote banana bowl whimsey.

Colors are marigold, green, amethyst, blue, aqua and vaseline with the darker colors most available; however with the exception of the table sets and standard bowl shapes, all Millersburg Cherry shapes are rare in any color.

Reports of shards in clear iridized and white have been rumored for years but I haven't encountered any. Millersburg Cherry was made in crystal glass in small amounts and these may account for the rumor.

\*\*\*\*\*





#### VENETIAN TABLE SET

While most people are familiar with this beautiful Cambridge pattern in the giant rosebowl, I'm sure few have heard that Venetian was also made in a beautiful table set.

Shown is the ultra-rare covered butter dish in a soft marigold. It is owned by a Pottstown, Pennsylvania family. The matching creamer and covered sugar are in a west coast collection. This far the spooner has not been reported, but surely is out there somewhere. If anyone knows of other colors in this table set I would be happy to hear from you.



Bill Edwards  
Indiana

#### TOM'S AUCTION

We have watched Tom Burns of Bath, New York grow up through the years to a fine young man who recently studied auctioneering and seems to be doing quite well for a newcomer. We attended his auction at New Philadelphia, Ohio September 11 and 12th, at the same motel the ACGA had their convention back in July.

A nice carnival crowd came for the Friday evening viewing and the sale of 100 items. Then next day approximately 200 more items were sold. The Charles Noonans of Indiana found it necessary to dispose of their carnival as they are moving to a smaller home. Their collection looked exceptionally pretty with good color and very few damages. The highest prices were \$1,350 for a lovely Butterfly and Tulip bowl, a rare white Orange Tree mug at \$1,025. Water sets did real well as did a rather rare green G/C punch set at \$900. All in all it was a good sale and the Noonans were well pleased.

Tom was ably assisted with Bill Richards of Ohio. Mr. Richards has a well known reputation as a good auctioneer. The two together compliment each other and go together like cake and ice cream. They are so honest on naming every little chip or pin head that very few items ever are returned-mostly due to the eagle eye of Mr. John Britt who is an expert on finding any little flaw. This combination gives the buyer much confidence, knowing all will be well one way or the other.

It was a lovely get together-a few had carnival to sell in their rooms with a lot of visiting between auctions. We were all shocked and very much saddened to get the word about Dick Loechinger of Dayton, Ohio passing away suddenly from a heart attack. We well remember Dick from the early days of carnival and feel a great loss. We express deepest sympathy to all the family and hope others will send them cards of sympathy at such a sad time. The Dayton Club is to sponsor the A.C.G.A. convention next year and we had especially looked forward to seeing Eloise and Dick knowing they would add so much to the Dayton's group enthusiasm. We shall miss him very much.

Tom's next auction is at Strongsville, Ohio, October 16 and 17. He says its an outstanding collection with many rarities. Tom has a rare whimsey of his own he probably will auction off. He had it at New Philadelphia to tempt everyone. Its a lovely little cupid shaped

blue Fenton open edge item made from the hat shaped pieces. A rare cutie anyone would only dream of owning. I am not sure we can go due to a special 50th anniversary in the family. No, it isn't ours yet but we are tripping along toward a gold one in about five years. We could count our blessings every day-all day long for the good luck we have had for so many long years. We think of the Millersburg, Ohio Fall Festival too October 8-9-10th. We always love it but will be forced to give up something. We've gone to it so much we almost think they might not have it without us and then many many thousands of people who converge on that little Amish town would surely be so disappointed. Could be no one would even notice and it would go right on without us. A terrible thought.

Tom had his lovely mother with him this time and one can easily see where Toms winning personality comes from. We hope she will join the crowd again. One of Tom and Bills auctions are well worth anyone's time.

Byron & Grace Rinehart  
West Virginia

\*\*\*\*\*

Enjoy the bulletin very much. We hope to attend the convention this next year.

The Hulsey's  
Fort Payne, Al

\*\*\*\*\*

ESTATE AUCTION

October 17, 1981, Ft. Scott, Kansas there will be an estate auction with approximately 100 pieces of carnival. 50 pieces of real good old carnival and 50 pieces made in later years. Glass is to be sold around 1 to 2 PM. M Stag & Holly bowl, B Panther bowl, 10 pieces signed N, Formal M rare, G Star of David, Open Rose, 2 Millersburg pieces and 3 PO pieces. Dunn Auction Barn, Ft. Scott, Ks

Mary Margaret Thomas

TOM BURNS AUCTION

- |  |                                       |
|--|---------------------------------------|
| P Maple Leaf water set 375                       | G Grape & Gothic Arch 7 pc wt set 625 |
| M G/C cracer jar 185                             | M Kittens cup & saucer 270            |
| M G/C banana boat 140                            | B Kittens banana dish 350             |
| B Persian Medallion plate 9" 100                 |                                       |
| M Star & File decanter 6 wines rare 255          |                                       |
| M Rococco vase sm nick 225                       |                                       |
| M Octagon decanter 5 wines 100                   | M Horse Head Medallion rose b 185     |
| M Grape Arbor water set 7 pc 400                 | IB N Poinsetta & Lattice ftd b 325    |
| PO Round up ruffled plate 160                    | G Raspberry 7 pc water set 410        |
| P Pastel swan rare 100                           | M G/C 4 pc table set 285              |
| G Good Luck bowl 105                             | P Square Butterfly & Tulip ftd b 1350 |
| P Good Luck bowl 115                             | M G/C med punch set 345               |
| B Floral & Grape 5 pc water set 225              | G G/C med punch set 900               |
| AO Fruit & F bwers bon bon 375                   | M Fishermans mug 130                  |
| IG Fruit & Flowers bon bon 350                   | A Stork & Rushes mug 55               |
| IG Bushel Basket 260                             | M Butterfly & Berry 7 pc wt set 300   |
| M Bushel Basket 75                               | P Wishbon & Sapdes plate 110          |
| A Bushel Basket 275                              | P Acorn Burr 7 pc wt set 435          |
| W Bushel Basket 175                              | B Lattice & Grape wt set 575          |
| B Bushel Basket 105                              | B Panelled Dandelion 7 pc wt set 650  |
| B Peacock at the Fountain 5 pc water set 450     |                                       |
| G Persian Medallion plate 115                    | P G/C banana boat 250                 |
| PO Four Flowers chop plate with 6 ind plates 950 |                                       |
| G Fruit & Flowers plate 7" 175                   | P Imperial Grape wine 185             |
| W Orange Tree mug only 5 known 1025              | B G/C large ice cream bowl 175        |
| AO Three Fruits bowl 500                         | W Persian Garden lg ice crm bowl 210  |
| M Corn vase 525                                  | P Raspberry milk pitcher 200          |
| G Corn Vase 350                                  | M Waterlillie & Cattail table set 105 |
| IG Corn vase 200                                 | G Pastel Swan 25                      |
| W Corn vase 150                                  | M Stag & Holly ftd bowl 70            |
| A Concord 9" plate 200                           | M Star & File rose bowl 50            |
| R Fenton open edge basket 200                    | M Star & File tumbler 75              |
| M Panelled Dandelion 5 pc water set 450          |                                       |
| G Butterfly & Fern 7 pc water set 550            |                                       |
| S Poinsetta milk pitcher 130                     |                                       |
| G Poinsetta milk pitcher 130                     | G Singing Bird tumblers 2 @ 35 4@80   |
| IG Leaf Chain 9" plate 225                       | P Strawberry bowl 40                  |
| AO Drapery rose bowl 275                         | G Pine Cone 6" plate 120              |

SCOTT TUMBLER AUCTION

October 3, 1981 in the beautiful Osage Beach, Missouri country the auction of the tumbler collection of the late Lloyd Scott was held. This tumbler collection consisted of approximately 100 excellent tumblers. The color was outstanding and the collection held some rare tumblers. The crowd was small but very active in the bidding. Any of you who knew Lloyd will remember that he always bought tumblers for their quality and outstanding color.

Apple Tree B 40 W 110  
Beaded Shell P 55  
Blackberry Block W 300  
Cone & Tie P 450  
Cosmos & Cane H 45  
Cosmos & Cane souvenir 150  
Cut Cosmos M 125  
Dahlia P 50  
Diamond G 30 M 30 A 35  
Dandelion G 55 45 W 60  
Panelled Dandelion P 35 A 35 M 25  
Diamond Lace P 50 M 375  
Double Star G 50  
Drapery M 140  
Feather & Heart P 100  
Fentonia M 15  
Field Thistle H 190  
God & Home B 100-90-90-90-85  
Grape Arbor B 120 W 50  
Grapevine Lattice W 95-65  
Grape & Cable G 225 M 50  
Greek Key P 70 M 80  
Harvest Flower P 400  
Heavy Iris P 60 W 110  
Hobstar Band H 17.50 M 17.50  
Interior Poinsettia M 275  
Inverted Feather G 450  
Jeweled Heart M 50-60  
Lattice & Daisy P 35  
Late Inverted Thistle P 140  
Leaf Tiers B 160 M 50  
Sweetheart signed nearcut M 210

Lily of the Valley B 90 M 325  
Milady B 50 G 120  
Millersburg Cherry P 325  
N Cherry M 230  
Ftd Orange Tree B 45 H 50  
Ftd Orange Tree Var B 210  
Oriental Poppy P 70 M 40  
Peacock at Fountain IB 110 A 110  
B 45 G 175

Perfection P 300  
Raspberry W 425 M 35  
Singing Birds G 35  
Springtime M 40 G 90  
Stork & Rushes B 45 lattice band  
Ten Mums B 50-40-30 W 120  
White Oak M 110-100-80-  
Wishbone M 60  
Wisteria W 220  
Quill P 350  
Strawberry M 30  
Oriental Poppy IB 90  
Sydney M 200  
Wreathed Cherry P 50  
Butterfly & Plume G 50  
Maple Leaf M 35

Cherry Mikado G 350  
Butterfly & Plume water set B 270  
Leaf Ray nappy PO 45  
Fine Cut & Roses rose bowl P 60  
Holly hat shape R 130

FROM I.C.G.A. TO P.N.W.

From La Crosse, Cooley and I rented a car and drove to Minneapolis and then flew to Portland, Oregon. Ken Osbon picked us up and we were Ken and Marcie's guests for several days. Their home is just lovely and their glass is beautiful. Most of their aqua opal was packed to be taken to the Pacific Northwest Convention.

After Ken, Cooley, their son Mike and our son Todd returned from fishing in the ocean, we left Wednesday for Kelso, Washington. Ken drove their motor home and Cooley drove their car. The scenery is just magnificent. We had never been in that part of the country before and it's a sight to behold.

The Pacific Northwest Carnival Club really had a good convention. There were quite a few displays. Ken and Marcie's beautiful AO display took first place. The hospitality room was just terrific and everyone was so friendly. Ken was elected President of the club.

We returned home August 16 from the final 2 carnival Glass Conventions. What a great way to spend 2 weeks.

Our thanks again to Ken and Marcie and all the Pacific Northwest members for the fine hospitality.

Marge and Cooley Miller  
Kansas City, Missouri

\*\*\*\*\*

AIR CAPITAL CARNIVAL GLASS CLUB

This month we all went to Manhattan, Kansas to visit the Britt's. We all met at the All Seasons motel for a buffet lunch. Then John and Lucile took us to their home to look at their collection. Lucile & John gave a program on mugs and we all came away knowing much more about carnival glass. We always look forward to making this trip each year as we always see new things added to the collection and see things we missed the year before. Sadie and Herb Treff of Kansas were able to be with us and we were all glad to see them.

Our next meeting will be at the home of Roland Kuhn and Donald Kime.

Donald Kime  
Secretary

## TAMPA BAY CARNIVAL GLASS CLUB NEWS

The regular monthly meeting of the Tampa Bay Carnival Glass Club was held September 20, 1981 at the home of Dorothy and Artur Smith in Lakeland, Florida. Following a buffet luncheon the club settled down to a serious business session. Plans were completed for a celebration of National Carnival Glass Week which will be held in conjunction with the Weather Vane antique show at the Pinellas Square Mall, Pinellas Park. Through the generosity of the show promoters the Tampa Bay Club will exhibit Carnival Glass and answer questions to the public. Among the members who will be on hand to maintain the exhibit are Ruth Argyros, Naomi Calkins, Barbara Hobbs, Shirley Conyer, Dorothy and Art Smith.

Barbara and Bill Hobbs joined the club at the meeting and also proudly exhibited a red holly bowl recently purchased. Other guests present were Melissa Smith and Ellen, Lois and Gil Walton.

The club is in the process of completing plans for the Lose Your Heart To Carnival Glass Jamboree to be held Saturday, February 13, 1982 in Lakeland. The sight of the meeting has narrowed down to three locations. It is planned to have exhibits, sales, and educational activities in addition to a banquet. Other activities are being planned. An announcement of exact location will be in the next issue.

The October meeting will be with the Dorothy and Walter Holzworths at Fort Pierce. The meeting is at noon Sunday October 18, 1981. However, several of the group will be going down to Fort Pierce on Saturday the 17th. Walter and Dorothy have an extensive glass collection to show and tell. For additional information about this meeting call Walter at 305-464-2141.

Arthur Smith

\*\*\*\*\*

\*\* It is great when clubs such as yours will take the time and effort to take advantage of National Carnival Glass Week to further promote our great hobby of Carnival Glass. Our hats off to all of you who participate in this week.

Editor

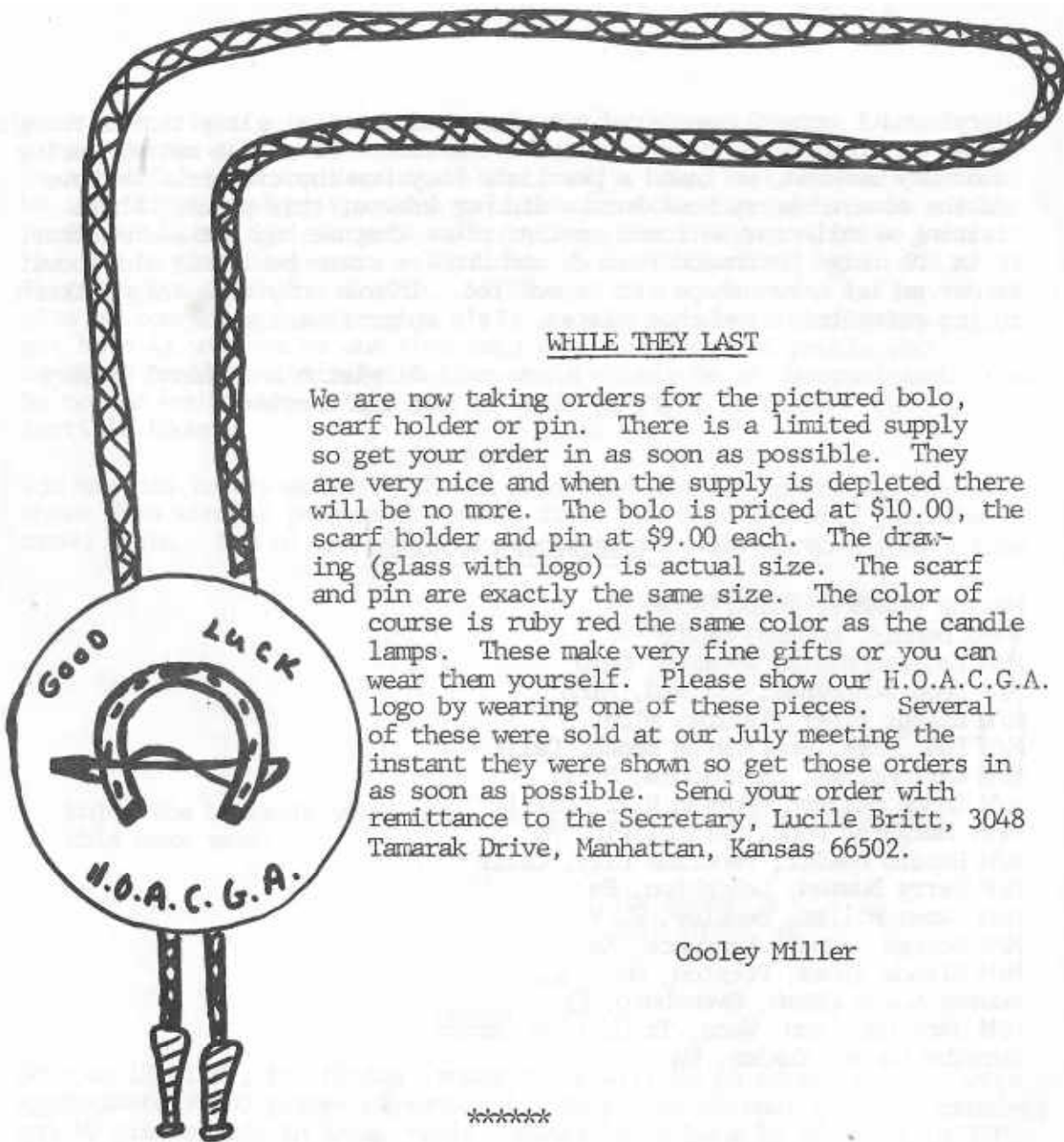
Cheryl and I recently acquired two pieces of carnival glass that I thought should be brought to the attention of the club. At a flea market during Labor Day weekend, we found a pearlized Lacy Dewdrop creamer. We have had the covered berry bowl but we did not know of this piece. While visiting a collector we found another piece that we had not seen before. It is the large Northwood Peacock and Urn ice cream bowl only this bowl is not an ice cream shape, it is ruffled. I have only seen this pattern in ice cream bowls and chop plates. It's color is marigold.

Singleton and Cheryl Bailey  
South Carolina

\*\*\*\*\*

## WELCOME NEW MEMBERS

Maxine Vickers, Tulsa Okla  
Ward Dennis, Encino, Calif  
M/M Leo Arenstein, Wyoming, Ohio  
M/M Leon Schneider, Milland, Mich  
M/M Elgene Piper, Taylor, Mich  
M/M Roy Smith, Huntington Beach, Calif  
M/M Carl Martel, Ogdensburd, N. Y.  
M/M Chuck Bullard, Morgan Hill, Calif  
Mrs. Margaret Deck, Springfield, Mo  
M/M Harold Hewitt, Panorama City, Calif  
M/M Kerry Bowman, Lehighton, Pa  
M/M James Miller, Beckley, W. V.  
M/M George Newman, Lawrence, Ks  
M/M Claude Bybee, Preston, Mo  
Audrey & Sue Magan, Owensboro, Ky  
M/M Jack Hamilton, Waco, Tx  
Dorothy Campo, Yakima, Wa



WHILE THEY LAST

We are now taking orders for the pictured bolo, scarf holder or pin. There is a limited supply so get your order in as soon as possible. They are very nice and when the supply is depleted there will be no more. The bolo is priced at \$10.00, the scarf holder and pin at \$9.00 each. The drawing (glass with logo) is actual size. The scarf and pin are exactly the same size. The color of course is ruby red the same color as the candle lamps. These make very fine gifts or you can wear them yourself. Please show our H.O.A.C.G.A. logo by wearing one of these pieces. Several of these were sold at our July meeting the instant they were shown so get those orders in as soon as possible. Send your order with remittance to the Secretary, Lucile Britt, 3048 Tamarak Drive, Manhattan, Kansas 66502.

Cooley Miller

\*\*\*\*\*

POLICY FOR ADVERTISING IN H.O.A.C.G.A. BULLETIN

We repeat the guide lines set up in years past for the benefit of the new members and as a reminder to all. Member families may advertise ten (10) FOR SALE and ten (10) WANT ads each month free of charge.

All advertisements, announcements, letters or any other item to be printed, must be received by the Bulletin Secretary by the 1st of the month to insure being published the month received.

1. In the absence of any chips or cracks being noted the piece will be considered perfect.
2. A 5 day return privilege at buyer's expense providing it is not as advertised.
3. All postage and insurance extra.
4. All for sale items must be priced - no bid items will be published.
5. The H.O.A.C.G.A. and paper do not accept any responsibility for items bought or sold thru this paper.
6. Marked Northwood pieces - please use (N).
7. Only OLD CARNIVAL GLASS items will be published.- The only new Carnival items accepted are the H.O.A.C.G.A. souvenir items.

For accuracy of description, the following is recommended:

- |                       |                      |
|-----------------------|----------------------|
| A - Amethyst          | PM - Pastel Marigold |
| P - Purple            | R - Red              |
| G - Green             | C - Clear            |
| B - Blue              | IG - Ice Green       |
| CB - Cobalt Blue      | IB - Ice Blue        |
| M - Marigold          | AMB - Amber          |
| PO - Peach Opalescent | S - Smoky            |
| AO - Aqua Opalescent  | W - White            |

- |                            |                              |
|----------------------------|------------------------------|
| EI - Excellent Iridescence | L - before color means light |
| GI - Good Iridescence      | D - before color means dark  |

EXAMPLES: LM EI Brooklyn Bridge bowl \$250.00  
 DP EI Good Luck bowl (N) small  
 base chip 75.00

It would be appreciated if you will please use these codes suggested, it will be less confusing to everyone and also be helpful in the typing and set up of the bulletin.



FOR SALE

Dick Wetherbee, 847 Stafford St., Rochdale, Ma 01542 PH 617-892-4420

PO EI	Holly & Berry 8" bowl	45
F EI	Grapevine Lattice 6 1/4 ruffled low bowl	28
M EI	Cherry Chain w/Orangetree back 10 1/2 master berry bowl	42
G EI	heavy Grape 8 1/2 flat plate	55
PO EI	Single Flower 9 1/2 bowl	42
M EI	Rose Show 8 3/4 bowl pastel maridold	110
G EI	(N) Grape & Cable 7 1/2 bowl rare single leaf cluster	35
P EI	Imperial Grape carafe	125
G EI	Imperial Pansy nappy helios	18
P EI	Heavy Grape 10 1/2 master berry bowl	68

\*\*\*\*\*

Rick Kojis, 2020 South 80 St., West Allis, Wisconsin 53219 PH 414-327-0321

A EI	Millersburg Peacock & Urn 9" bowl	125
G EI	Illusion bon bon rare color	85
M EI	Grape & Cable hatpin holder	115
PO EI	Petal & Fan berry dish	30
Clambroth LI	Loganberry vase	225
Aqua LI	Fieldflower pitcher chipped base	65
A EI	Fluffy Peacock pitcher	345
M EI	Millersburg Fleur de lys 10" ice cream bowl	95
G EI	Singing Birds mug	70
P EI	Imperial Grape wine glasses two ea	30

\*\*\*\*\*

Jennifer Jenkins, 7909 Kimberly Ave, Bakersfield, Ca 93308 PH 805-399-1024

W EI	Persian Garden 2 pc fruit bowl	300
M EI	Beaded Cable rosebowl	60
W EI	Constellation w/Seafoam ext compote	65
P LI	Grape & Cable tankard tumbler	80
B EI	Stork & Rushes tumbler	30
M EI	Grape & Cable orange bowl Persian Medallion int	95

Edward Henderson, 1111 N College, Stuttgart, Ark 72160 PH 501-673-8757

P EI	Greek Key . Basketweave 8" bowl (N)	100
P EI	Basketweave 8" scalloped bowl (N)	45
G EI	Stipple Ray bowl (N)	60
A EI	Dahlia bowl (N)	40
M EI	Grape With Leaf tumblers 3 ea	20
M EI	Peacock & Grape berry spray bowl	50
M EI	Grape & Cable two handle nappy	50
M EI	Grape & Cable 6" bowl	40
M EI	Butterfly vase small chip on base	25
M EI	Swirl Rib vase	50

\*\*\*\*\*

M. H. Bevill, 48528 Hawk, Selfridge A.N.G. Base, Mi 48045 PH 313-949-4766

S EI	Soda Gold console bowl scarce	45
A EI	Vintage Epergne lily minor nick on base	18
M EI	Leaf Tiers creamer	45
M EI	Vintage wines ea	16
M EI	Stag & Holly deep bowl	70
M EI	Two Flowers large bowl	25
M EI	Imperial Grape goblet ea	25
M EI	Northwood Strawberry 9" plate	50
M EI	Rex tumblers ea	10

Send SASE for updated carnival listings

\*\*\*\*\*

Mary Kesterson, 3020 Mesa Rd, Willow Park, Tx 76086 PH 817-441-8410

R EI	Fenton vase 9 1/2	225
P EI	Six Petals bowl	60
G EI	Thistle compote	65
M EI	Windflower sauce boat	45
CB EI	Fine Rib vase	40
M LI	Stag & Holly spat ft bowl	75
M EI	Peacock at Urn bowl	48
G EI	Good Luck bowl (N)	125
P EI	G/C large berry bowl	135
S EI	Hattie bowl 9"	65

Edward Henderson, 1111 N College St., Stuttgart, Ar 72160

PO	Cherry Spray	52.50
M	Dragon & Lotus 8" bowl	52.50
A	Crackle finish 9 1/2" plate	50

\*\*\*\*\*

Singleton and Cheryl Bailey, Box 95, Loris, So Car 29569 PH 803-756-4021

P	EI	Flute sugar	25
M	LI	G/C sherbert	15
P	EI	G/C lid to sweetmeat (bubble on edge)	25
B	EI	Orangetree butterdish lid (nicks)	20
W	EI	Three Fruits dome ftd bowl	75
A	EI	Peacock Tail sauce (Horlacher on base)	35
P	EI	Nautilus signed Northwood (nick on base)	75
G	EI	Butterfly and Berry tumblers 2 ea	66
B	EI	Apple Blossom & Twigs plate	89
B	LI	Peacock at Fountain tumblers 4 ea	35

\*\*\*\*\*

Helen Nadeau, 18 Thomas Onley Common, Providence, R.I. 02904 PH 401-521-4581

P	EI	Victorian bowl N (rare)	175
M	EI	Fentonia tumblers 6 ea	45
G	EI	Cherry sugar (Millersburg)	95
M	EI	Acorn Burrs water pitcher N	300
P	EI	N/G punch cups 6 ea	20
P	EI	N/G hat pin holder	150
P	EI	Fine Cut & Roses rose bowl	65
PO	EI	Caroline bowl candy ribbon	45
P	EI	Diamond Lace tumblers 5 ea	42.50
P	EI	Fishermans mug	95

\*\*\*\*\*

D. W. Evans, 617 E 18th St., So. Sioux City, Ne 68776 PH 402-494-5269

R	EI	HOACGA corn vase	40
R	EI	HOACGA loving cup	45
G	EI	Rosette (N)	45

\*\*\*\*\*

Suzie & LaVern White, Grafton, Ia 50440 PH 515-748-2923 after 6pm

DM	EI	Grape Arbor tumbler	20
LM	EI	Grape Arbor tumbler	20
G	EI	Singing Bird tumblers	38
B		Painted Cherry Blossom tumblers	18
M	EI	Fashion punch cup	15

\*\*\*\*\*

Esther Rogers, 33237 Cr 452, Brinkhaven, Oh 43006 PH 614-824-4106

M	EI	Waffle Block punch cup	18
IB	EI	Memphis punch cup	45
A	EI	Wreath of Roses vintage int punch cups 4 ea	20
M	EI	Lustre Flute creamer sugar	55
P	EI	Flute Tooth pick	65
G	GI	Flute Tooth pick no chips shows wear	35
PM	EI	Fanciful ruffled plate	75
M	EI	Cosmos Vt. bowl radium finish	45
B	EI	Orange Tree jelly compote	35
G	GI	Rays ribbons bowl	45

\*\*\*\*\*

Don Staley, 1200 Milan St., Suite 3124, Houston, Tx 77002

M	EI	Oriental Poppy tumbler	30
M	EI	Stork & Rushes banded tumbler	20
M	EI	Stork & Rushes banded tumbler	20
M	EI	Singing Birds tumbler	25
M	EI	Octagon tumbler	18
M	EI	Orange Tree Orchard tumbler	30
M	EI	Butterfly & Berry tumbler	15
M	EI	Swirl tumbler minor base chip	15
	LI	Assortment of 12 tumblers shipped all different 8 M 4 dark bargain	60

Send SASSE with 2 stamps for large tumbler listing

\*\*\*\*\*

Bill Edwards, 423 N Main, Rushville, Ind 46177 938-4221

EI	Brooklyn Bridge bowl	195
M EI	Heavy Grape 10" bowl	45
M EI	Imperial Grape tumblers outstanding color 4 ea	18

\*\*\*\*\*

Michael J. Basey, 4315 Adams, Kansas City, Ks 66103 PH 913-432-2460 evenings

LG GI	Fenton's Fine Rib vase base chip	10
IB EI	Concave Diamonds tumbler	25
M GI	Fenton's Flowers rosebowl	45
M EI	Imperial Ripple vase	35
M GI	Star Medallion milk pitcher	22
M GI	Fine Cut & Roses (N) rosebowl	50
M GI	Louisa ftd nut bowl	12

\*\*\*\*\*

Raymond Heeley, 210 Overlock Rd., Painesville, Oh 44077 PH 216-354-3440

CB EI	Rose Show bowl	150
M EI	Parfait	25
LM EI	G/C N candlestick	80
M EI	Waterlily and Cattails 5 1/2 ftd bowl aqua base feet	50
G EI	Lotus & Grape plate	425
M EI	Peacock at Fountain water set 7 pc N	300
P EI	Scroll Embossed flat plate	85
M EI	Stork & Rushes creamer rare	65
P EI	Flute creamer & sugar slt rough one handle	90
EI	Masonic goblet, black base, gold wheat, silver scimitars, cranberry cup	80

\*\*\*\*\*

Bonnie Parkhurst, RD 1 Box 87, Canastota, N.Y. PH 315-337-9118

M EI	Wishbone 3 ftd bowl flattened edge	32.50
M GI	Butterflies bon bon	30
M EI	Daisy & Plume stemmed rosebowl	27
G EI	Inverted Feather cracker jar lid	27
M LI	File pattern sugar bowl chipped top	3
M GI	Stippled Ray sugar & creamer pair	8

\*\*\*\*\*

34

Ron Brown, 2 Main St., Chazy, N.Y. 12921 PH 518-846-7469 after 5

P EI	G/C hatpin holder (N)	175
P EI	G/C small berry thumbprint (N)	30
P EI	Peacock at Fountain (N) spooner	90
W GI	Peacock at Fountain (N) 7 pc berry set	475
G EI	Singing Birds (N) tumblers 4 ea	29
G EI	Inverted Feather covered cracker jar	185
AM EI	Fenton's Thistle banana boat	175
AM EI	Acorn Burrs (N) sm berry bowls 5 ea	39
B EI	Garland rose bowl	65
M EI	Raspberry (N) water pitcher	85

\*\*\*\*\*

Eva Backer, 12 Sherwood Rd., West Hartford, Ct 06117 PH 203-232-1027

G EI	Peacock Tail tri-cornered bon bon	30
PM EI	Fashion tumblers 4 ea	30
CB EI	Fenton Peacock Tail hat shape	28
A EI	G/C water set 4 tumblers	350
A EI	Pansy bowl 9"	45
M EI	Maple Leaf tumblers 3 ea	25
W EI	Persian Garden bowls ea	70
M EI	Panelled candle sticks 6 1/2 pair	25
P EI	Scarab hat pin 4 3/4	30
M EI	Vintage center handle cookie service 9" Hand pg 205	40

\*\*\*\*\*

Vicki Alexander, 955 L. Henrietta Rd., Rochester, N.Y. 14623 PH 716-424-6320

P EI	Singing Bird mug	85
G EI	Singing Bird mug	85
M EI	Singing Bird mug	45
CB EI	Orange Tree mug	50
P EI	Wreathed Cherry tumbler	45
P EI	G/C hat pin holder	170
M EI	Polo ash tray	45

\*\*\*\*\*

35

Ray Reichard, R 1 Box 195, Dallastown, Pa 17313 PH 717-244-5760

A EI	Peacock & Grapes 9" bowl	30
A EI	Double Stem Rose dome ftd bowl	40
A EI	Wishbone & Spades 10 3/4 flat plate ext soda gold	475
G EI	Feather Serpent large berry bowl	45
B EI	Butterfly & Berry bowl int Peacock Tail ftd	60
B EI	Holly bowl	35
M EI	Blackberry 7 1/4 Millersburg bowl	20
M EI	Star Medallion tumbler	23
PM EI	Open Rose bowl	20
W EI	Rose Show bowl	225

\*\*\*\*\*

Darlene Yohe, Box 343, Stuttgart, Ark 72160 PH 501-673-3437

CB EI	N G/C Orange bowl rare color	275
A EI	N G/C punch cups 10 ea	30
P EI	N Bushel basket	75
PM EI	N Peacock at Fountain tumblers 2 ea	30
B GI	Stork & Rushes tumbler	20
LM GI	Bouquet tumbler	20
G EI	N Raspberry tumbler	35
P EI	N Raspberry tumbler	35
P EI	G/C Sweetmeat sm flake one tooth	100
G EI	N G/C 11" ice cream bowl little mold roughness one point	150

\*\*\*\*\*

A. A. Fogleman, 2300 Hemlock Dr., High Point, N.C. 27260 PH 919-454-3267

P EI	Oriental Poppy water set 7 pc	800
G EI	Millersburg Trout & Fly bowl	275
P EI	G/C 4 pc table set	525
P EI	G/C Sweet meat compote	200
P EI	G/C punch cup 2 ea	30
P EI	(N) Bushel basket	90
CB EI	Good Luck bowl pie crust edge	140
W EI	Rose Show plate	225

\*\*\*\*\*

Mary Herren, 520 S. Berry, Morganfield, Ky 42437 PH 502-389-3121 evenings

IB EI	Fine cut & roses fancy int rosebowl rough ft	65
M EI	Millersburg buttermilk goblet	22
P EI	Stork & Rushes punch cup	15
P EI	Vintage punch cup	15
M EI	G/C basketweave plate	45
M EI	Peach & Pear banana bowl sm base chip	40
M EI	Vintage mug	15
M EI	Whirling Star 9" scalloped bowl	15
M EI	Open Rose large berry bowl	18

\*\*\*\*\*

Mary Welch, 213 Alexander, Scotia, N.Y. 12302 PH 518-393-7748

G EI	G/C punch cups 6 ea	21
G EI	G/C tumblers 2 ea	23
M EI	Appletree tumblers 4 ea	18
DM EI	Appletree tumbler	18
DM EI	Butterfly & Berry tumbler	14
M EI	Star Medallion punch cup 4 ea	8
M EI	Crackle Dome ftd water set 5 pc	50
DM EI	Roses punch cup grape int 2 ea	7
P EI	Millersburg Flute sauces 3 ea	18
DM EI	G/C Stippled punch base reg size	20

Send 2 stamps for lists of 350 items

\*\*\*\*\*

George Loescher, 2420 Park, Beloit, Wi 53511 PH 608-362-3104

B EI	Fenton G/C 8" bowl	23
M EI	Holly compote ruffled edge	18
M EI	Fashion punch cup	10
A EI	Primrose bowl radium finish	55
P EI	N Dandelion tumbler ribbed int	42
B EI	Apple Tree tumbler	40
M EI	Millersburg Cherry compote rare	800
A EI	Seacoast pin tray gorgeous	250
A EI	Millersburg Nesting Swan radium	225
AO EI	Rose Show bowl	400

\*\*\*\*\*

Juanita Hulsey, 104 23rd St., S. W. Fort Payne, Al 35967 PH 205-845-2273

A EI Peacock at Fountain tumbler 4 ea	120	30 ✓
B EI Fentonia tumbler	52	55 ✓
A EI Beaded Shell mugs ea	17 7/8	65
B EI Cherry Chain bon bon 2 handles		40
IB EI Concave Diamonds tumbler		25 4/00
P EI Oriental Poppy tumbler 2 ea		45
B EI Vintage nut bowl 3 ft		40
M EI Curve Star chalice		75
M EI Grape & Gothic Arches butter dish	4. ✓	75
M EI Harvest Flower tumbler		75

*Daisy + Drape Aqua Op NOT for Sale yet.*

Sterling Butz, 221 N. Adams St., Allentown, Pa

B EI Holly plate		75
A EI Millersburg Peacock at Urn ice cream bowl		150
P EI Millersburg Peacock at Urn ice cream bowl		150
G EI Peacock Tail bon bon		25
M EI Peacock & Grape plate sm chip one point		65
W EI Pond Lily bon bon		60
M EI Big Basket Weave creamer & sugar w/lids rough spot one lid pair		40
M EI Peacock at Urn plate		125
M EI Vintage 9" spatula ftd plate		75
M EI Blackberry Block tumbler		35

\*\*\*\*\*

Patricia Craver, Box 8015, Allandale, Fl 32023 PH 904-788-5315

W EI Persian Garden bowl heavily ruffled 11"		190
W EI Northwood Peacocks plate pale color		150
M GI Magnolia & Drape pitcher		65
G EI G/C Candlestick (N)		90
M EI Coindot 8" flat plate		95
AMB EI Pansy dresser tray		75
M EI Millersburg Strawberry bowls 5 1/2 6" 4 ea		28
B EI Fentonia tumbler		60
P EI Oriental Poppy tumblers 6 ea		45

Ruth Schinestuhl, 55 Natalie Terr, Absecon, N.J. 08201 PH 609-641-1814

G EI Wishbone bowl 3 ft		70
B EI Persian Medallion plate		125
M EI Leaf Chain bowl		30
A EI Dragon & Lotus bowl		60
G EI Peacock & Grape bowl		55

SASE for list old carnival for sale fall 81 list

\*\*\*\*\*

Lydia Caudle, Rt 1 Box 87, State Road, N. C. 28676 PH 919-874-2519

P EI Rosalind 10" bowl		125
A EI Little Stars bowl		90
P EI Victorian bowl		250
P EI Peacock at Fountain pitcher (N)		265
M EI Flute & Cane milk pitcher		135
M EI Rose Show plate		195
A EI Millersburg Cherry butterdish nick on b		95
M EI Grape & Cable 7 pc water set		345
EI Good Luck bowl		110
P EI Good Luck plate		165

\*\*\*\*\*

Dorothy Campo, 5209 Crest Acres Lane, Yakima Wa 98908 PH 509-966-7949

G Corn bottle		185
S Corn bottle		225
M Covered Swan		150
M Daisy Block Row Boat		200
W Miniature Shell Candle Holder		50
M Butterfly & Berry tumbler		35

\*\*\*\*\*



Linda Halfacre, 1618 McKinley, Beloit, Wi 53511 PH 608-362-6109

M EI	Leaf & Beads candy dish	30
M GI	Butterfly & Berry 7 pc berry set	125
A GI	G/C tumbler (N)	25
AO EI	Rib vase bronze, unharmed polished feet	70
M EI	Octagon wine decanter, stopper broke on bottom	40
G EI	474 milk pitcher rare	150
CB EI	Two Flowers large bowl 3 feet nice	65
PM EI	Windmill milk pitcher	85

\*\*\*\*\*

Paul Berube, 11 Doris Ave, Tiverton, R.I. 02878 Ph 401-625-5303

M EI	N Lustre Flute punch cup whimsy	18
M EI	Oval & Round master berry bowl	8
DM EI	Acorn bowl 8"	15
M EI	Star Medallion punch cup	12
DM EI	Star Medallion goblet	30
M EI	NuArt clear Pillar shades 5 1/4 tall ea 3	30
M EI	NuArt clear Pillar shades 4 1/4 tall 2 ea	24
M EI	Diamond Block shade 4 3/4 tall	35
M EI	Unlisted stretch glass shade 4 1/2 tall	40
M EI	Imperial sugar & creamer ribbed footed	25

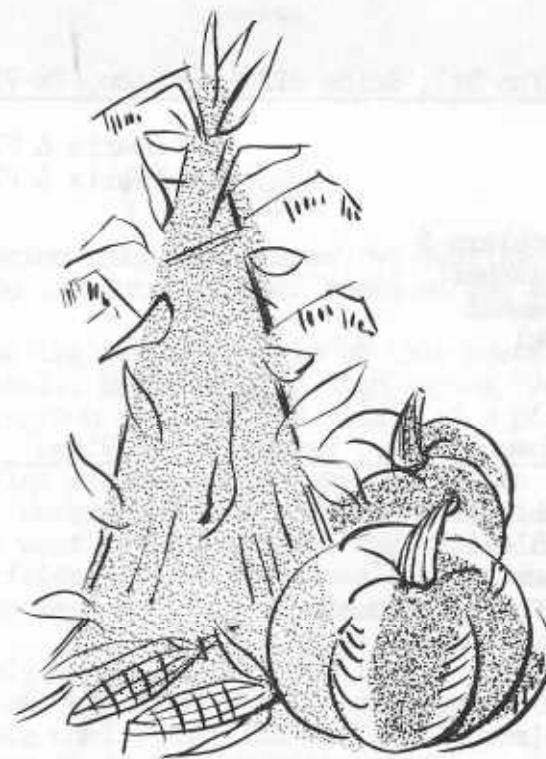
\*\*\*\*\*



Betty Moye, Rt 3, Gen Del, Nimitz, W Va 25978 PH 304-466-4524 after 8PM

B EI	Orange Tree 9 1/4 plate	150
P EI	G/C sweet meat	235
CB EI	Orange Tree mug	75
Aqua EI	Ripple vase 14"	68
M EI	Cherry Wreath 5 pc water set	400
M EI	Many Fruits 6 pc punch set	600
AO EI	Dandelion mug	600
IG EI	Dandelion mug	600
M EI	Stork & Rushes mug	35
G EI	Singing Birds 6 pc water set	800

\*\*\*\*\*



WANTS

Suzie & LaVern White, Grafton, Ia PH 515-748-2923 after 6 pm

- G Singing Birds tumblers 2
- G Tiger Lily w/bronze cast 6
- P Wreathed Cherry tumblers 3
- M Peacock at Urn ice cream dish 5 3/8 (N)
- IB Peacock & Urn ice cream dish 5 3/8 (N)
- P G/C punch cups 3
- P Flute punch cups 4
- Any color Big Fish & Trout & Fly

\*\*\*\*\*

Don Staley, 1200 Milan St., Suite 3124, Houston, Tx 77002

- CB Loving cup
- G Loving cup
- W Loving cup
- G Grape & Cable tumblers 5
- B Floral & Grape pitcher
- IB Fenton ruffled basket
- W Panther berry bowl
- IB Hearts & Flowers compote
- IG Hearts & Flowers compote

\*\*\*\*\*

A. C. Dickey, 144 Chandler St., Vacaville, Ca 95666

- IG Dandelion N tumbler
- IG Grape Arbor tumbler
- IG Raspberry tumbler
- IG Peacock at the Fountain tumbler
- W Orange Tree Scroll tumbler
- W Raspberry tumbler
- W Blackberry Block tumbler
- W Acorn Burrs tumbler

\*\*\*\*\*

42

Bill Edwards, 423 N Main, Rushville, Ind 46177 938-4221

- G Peacock Tail Vt. compote
- A Strawberry Wreath compote
- A Millersburg Cherry sugar base
- A Millersburg Cherry spooner
- M Seaweed bowl
- A Seaweed bowl
- A Country Kitchen spooner, sugar, creamer
- Any color Hobstar and Feather heart shaped dish

\*\*\*\*\*

Lloyd McDaniel, 2709 Lincoln, Joplin, Mo 64801 Ph 417-623-3926 after 6pm

- M Stork & Rushes water pitcher
- P G/C water pitcher
- B Peacock at Urn berry dishes nd 3
- Clear Cherry and Cable thumbprint tumblers nd 2
- Clear Cherry and Cable thumbprint creamer

\*\*\*\*\*

Eva Backer, 12 Sherwood Rd, West Hartford, Ct 06117 PH 203-232-1027

- G (Helios) Imperial Star of David bowl
- M Octogen stopper for decanter
- M Octogen wines

\*\*\*\*\*

Bonnie Parkhurst, RD 1 Box 87, Canastota, N.Y. PH 315-337-9118

- M Peacock at Fountain spooner
- M Peacock at Fountain butter base
- M Peacock at Fountain pitcher (water)
- Any color baskets
- M Fanciful bowl
- B Fanciful bowl
- P Fanciful bowl
- G Pansy sugar

\*\*\*\*\*

43

Singleton Bailey, Box 95, Loris, S.C. 29569 PH 803-756-4021 after 6 pm

Big Fish or Trout and Fly pieces  
Millersburg Peacock pieces  
Courthouse bowl  
Seacoast pin tray  
Any Millersburg compotes

\*\*\*\*\*

Charles F. Dodson, 1116 S Edgewood St., Arlington, Va 22204 PH 703-920-4621

M Top to Twins punch bowl  
M Top to G/C powder box  
M Imperial Grape water pitcher

\*\*\*\*\*

D. W. Evans, 617 E 18th St., So Sioux City Ne 68776 PH 402-494-5269

P G/C cologne stopper  
A G/C cologne stopper  
Any color Little Barrel

\*\*\*\*\*

Jos. Mello, 535 Fish Rd., Tiverton, R. I. 02878 PH 401-624-2174

A Wreath of Roses base to punch set  
G Imperial Grape punch cups need 2  
A Imperial Grape punch cups need 6  
M P/F pitcher to table set  
M Acorn Burr punch bowl top  
A Wide Panel base to epergne  
B Lattice & Daisy water pitcher  
G Fenton basket  
A Fenton basket  
W Fenton basket

\*\*\*\*\*

44

Mary herren, 520 S. Berry, Morganfield, Ky 42437 PH 502-389-3121 evenings

M Heart & Star handled basket  
G Cherries & Blossoms pitcher  
G Fancy Flowers compote  
M Poinsettia milk pitcher

\*\*\*\*\*

Darlene Yohe, Box 343, Stuttgart, Ark 72160 PH 501-673-3437

M File butter base  
M Country Kitchen butter base  
W Peacock at Fountain butter lid  
P Dahlia butter lid  
W Cosmos & Cane sugar base  
P Acorn Burr sugar base  
G Hanging Cherries sugar base  
P Dahlia sugar lid  
P Springtime creamer

\*\*\*\*\*

A. A. Fogleman, 2300 Hemlock Dr. High Point, N. C. 27260 PH 919-454-3267

B Singing Birds water pitcher  
A G/C flat saucer basket weave back  
P G/C flat saucer basket weave back  
P Peacock at Fountain covered sugar

\*\*\*\*\*

Moleen Cline, Rt 6 Box 271, Yakima, Wa 98908

B Butterfly & Berry covered sugar bowl and creamer

\*\*\*\*\*

45



Lydia Caudle, Rt 1, Box 87, State Road, N.C. 28676 PH 919-874-2519

Ice Blue water sets or parts  
Greek Key tumblers  
W Oriental Poppy tumblers  
Red or aqua opal any pattern  
P B (N) marked Peacock at Fountain tumblers  
P Vintage 6 ftd nut bowl

\*\*\*\*\*

Dorothy Campo, 5209 Crest Acres Lane, Yakima, Wa 98908 PH 509-966-7949

CB Butterfly & Berry creamer and or sugar  
P Springtime tumblers

\*\*\*\*\*

M. H. Bevill, 48528 Hawk, Selfridge A.N.G. base, Mi 48045 PH 313-949-4766

P Imperial Grape wines excellent color and condition  
M Fruit Salad punch bowl base  
B Butterfly & Berry butterdish top  
A Butterfly & Berry pieces  
G Butterfly & Berry pieces  
AO Damaged pieces  
R Damaged pieces  
  Damaged water pitchers  
M Wide Panel epergne side lily EI

\*\*\*\*\*

Mary Kesterson, 3020 Mesa Rd., Willow Park, Tx 76086 PH 817-441-8410

P Grape Delight rose bowl  
P Grape Delisht nut bowl  
P G/C pin tray  
CB Round Up bowl 9"  
P Dahlia sugar bowl  
M Fishermans mug  
IG Corn vase  
P G/C card tray

46

M Panter 5" berry bowl  
CB Orange Tree hat pin holder  
All must have excellent Irid.

\*\*\*\*\*

Paul Berube, 11 Doris Ave., Tiverton, R. I. 02878 PH 401-625-5303

IG Acorn Burrs punch top only  
Want rare and hard to find tumblers  
Have a rare red Pillar & Drape shade set in a marble and brass lamp to trade.

\*\*\*\*\*

Betty Moye, Rt 3 Gen Del, Nimitz, W Va 25978 PH 304-466-4524 after 7pm

Compotes any color  
Carnival lists for sale  
Collections for sale near my home



47

GRAPE & CABLE CANDLELAMP IN RUBY RED

