

H. O. A. C. G. A.  
DONALD E. KIME  
BULLETIN SECRETARY  
1202 W. 4th ST.  
HAYSVILLE, KANSAS 67060

WICHITA 670

November 1981  
S M T W T F S  
1 2 3 4 5 6 7  
8 9 10 11 12 13 14  
15 16 17 18 19 20 21  
22 23 24 25 26 27 28  
29 30

WICHITA 670  
NOV 4 4 PM  
1981  
FIRST CLASS

USA 2c



FREEDOM TO SPEAK OUT - A ROOT OF DEMOCRACY

USA 2c



FREEDOM TO SPEAK OUT - A ROOT OF DEMOCRACY

AMERICA'S EIGHT SUPREMACY



USA 50c

AMERICA'S EIGHT SUPREMACY





## Heart of America Carnival Glass Association, INC.

MEMBERSHIP JUNE TO JUNE  
\$10.00 PER COUPLE OR SINGLE

PUBLISHED 15th OF  
EACH MONTH

**PRESIDENT:**

GEORGE O. MCGREW JR.  
6800 WOODWARD  
OVERLAND PARK, KANSAS 66204  
913-262-8822

**VICE PRESIDENT:**

GEORGE BOLLES  
5204 CATALINA  
SHAWNEE MISSION, KANSAS 66205  
913-432-5438

**TREASURER:**

ELIZABETH BOLLES  
5204 CATALINA  
SHAWNEE MISSION, KANSAS 66205  
913-432-5438

**SECRETARY:**

LUCILE BRITT  
3048 TAMARAK DRIVE  
MANHATTAN, KANSAS 66502  
913-539-1933

**BULLETIN SECRETARY:**

DONALD E. KIME  
1202 W 4th St.  
HAYSVILLE, KANSAS 67060  
316-524-3123

### H.O.A.C.G.A. OCTOBER MEETING, 1981

The H.O.A.C.G.A. monthly meeting was held at the Overland Park Holiday Inn on Sunday, October 25, 1981. The meeting was called to order by our President, George McGrew. President McGrew welcomed Mr. & Mrs. Stuart Mills from Harrisonville, Missouri. Mrs. Connie Katowitz, Mrs. Florence Mullins and Mr. Herbie Treff, all of who have recently been in the hospital, were also present and feeling fine. Also, wishing Mr. Ralph Mullins good luck with his upcoming operation. Ralph will be going into the hospital on the 29th of October.

The minutes from the last meeting were read by Donald Kime in the absence of Lucile Britt, now spending the winter in Florida. The minutes were questioned by a member in regards to the colored brochure printed to promote the souvenirs. The member was not present at the preceding meeting and therefore was not aware of the decision made at that time to have this done. The minutes were approved as read.

The Treasurer's Report was not given as there was no activity during the month of October.

Cooley Miller, the souvenir chairman, reported that he will be presented with three shades of ice blue to choose from for the 1982 souvenir by Fenton. It was decided to have the limit on the whimsies to not exceed 30. A Motion was made by Bob Grissom and seconded to charge \$40 for the ICE BLUE CORN VASE. There was much discussion on the economy and various factors concerning the price to be charged with the thought in mind of furthering the plans for the WISHBONE EPERGNE for the 1983 souvenir. A final vote favored the \$40 price tag for the 1982 HOACGA souvenir. The souvenir will again be made in the 600 quantity.

The escalating charges for the bulletin were a major concern with members and there was long discussions on how to improve on this. Noting that the \$10 dues not cover the cost of printing and mailing of the 12 issues of the bulletin. It was suggested and agreed upon to trial run two bulletins to the East Coast and two to the West Coast to the same address; one being first class and the other third class. This would reduce the cost of postage considerably and if the delay is not lengthy would be considered as a means of cutting costs.

On the Convention scene, there were several suggestions made for the fun or activity for the Thursday night of the convention: (1) "Can you top that"

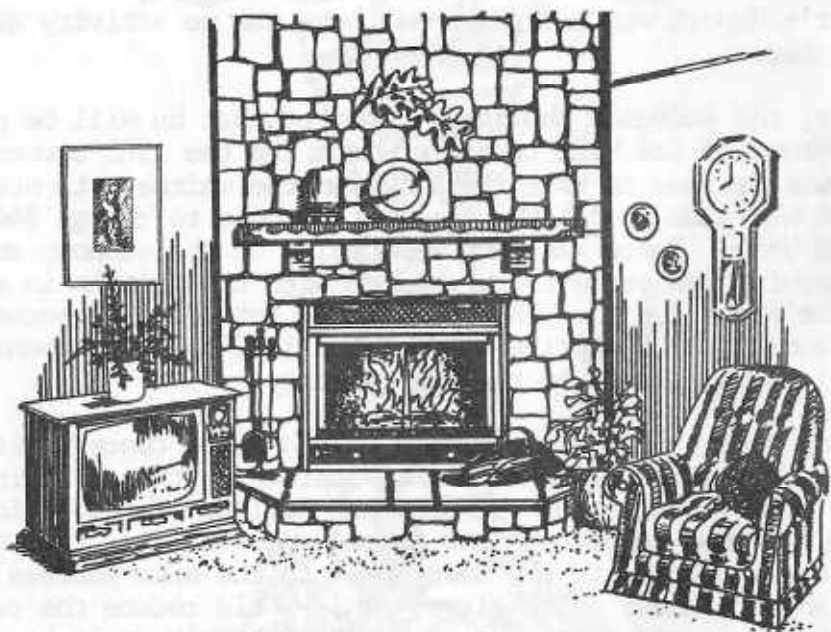
(wildest carnival glass tale), a late night pool-side small auction, and an identification/discussion period. More plans are being made all the time for a Super 10th Anniversary Convention.

Plans for the next HOACGA meeting, on November 22, will be a "Swap & Shop" so bring all your glass for selling or swapping and join us at the Overland Park holiday Inn at 2PM or 12:30 for lunch in the dining room. This will be the last meeting of the year due to the Christmas season so plan on attending.

Secretary Lucile Britt

President, George O. McGrew Jr.

\*\*\*\*\*



### NATIONAL CARNIVAL GLASS WEEK

The display that H.O.A.C.G.A. showed October 6 thru the 11th was a Tremendous success. A great many people showed a great interest in the displayed carnival and were astounded at the present prices pieces would bring.

Many items were brought in for identification and valuation. Besides the more common bowls some of the items brought in were: six Stippled Rays small berry bowls in R&D and in mint condition. They were purchased at a State Fair for the lady's sister by their grandmother for her hope chest. But due to unfortunate circumstances they were never used but have remained packed away for many years.

Among the other items were an Ivy Town Pump in purple, a green Cambridge cologne bottle, an A/O Drapery rose bowl and a beautiful amethyst Stag and Holly footed bowl.

There was an article in the local Sun Newspaper chain on carnival which brought the people out in volume on Saturday. I was not in town this day but the display was excellently attended by Diane Treff, who said there was a constant line of people for three hours. Thanks Diane for your much appreciated help. Mr. Harold Grobmyer who is a member and also works at the Antique Center was also kind enough to help during his busy day.

Big plans for next October and possibly sooner.

George M. McGrew Jr.

\*\*\*\*\*

Ralph Mullins and Marge Miller will have surgery in the next few weeks. We wish them a speedy recovery and hope they will be out of the hospital soon.

Florence Mullins and Connie Katowitz are both home from surgery and were able to attend the last meeting.

\*\*\*\*\*

The Holiday Inn will not accept any reservations for the convention in April 1982 until February 1982. We will be sending out reservations cards in the bulletin as that time draws near. They will not accept reservations without the card being filled out.

JUST 2 MORE MONTHS LEFT

We have some 1980 H.O.A.C.G.A. souvenirs (ice green hat pin holders) that have not sold.

Any member may purchase as many as they would like, at the regular price of \$35.00 plus \$2.50 postage. This will be on a first come first served basis so now is your chance to purchase more of these 1980 souvenir pieces.

All 1980 souvenirs that have not been sold by January 1, 1982 will be destroyed.

Please send your order with remittance to the Secretary, Lucile Britt, 3048 Tamarak Drive, Manhattan, Kansas 66502.

\*\*\*\*\*

Please remember to get your articles to me before the first of the month. I receive several of your for sale and want items too late to get them in the bulletin until the following month. The deadline is for the material to reach me before the first of each month. I must have all material ready to be sent to the printer on the first day of the month.

I hope those of you who are placing the for sale and want section are getting results. From the interest in this part of the bulletin we are getting alot of items for sale and wants. The range of items cover all price ranges. This gives the beginner as well as the advanced collector a chance to further our hobby.

The educational items have been outstanding and the writers have spent much time researching and we are so happy they will share this knowledge with all of us. Each article holds something that furthers the understanding and mysteries of some of the rare patterns as well as the more common ones.

Please keep these fine articles coming our way as we all appreciate your effort and you taking the time to share it with us.

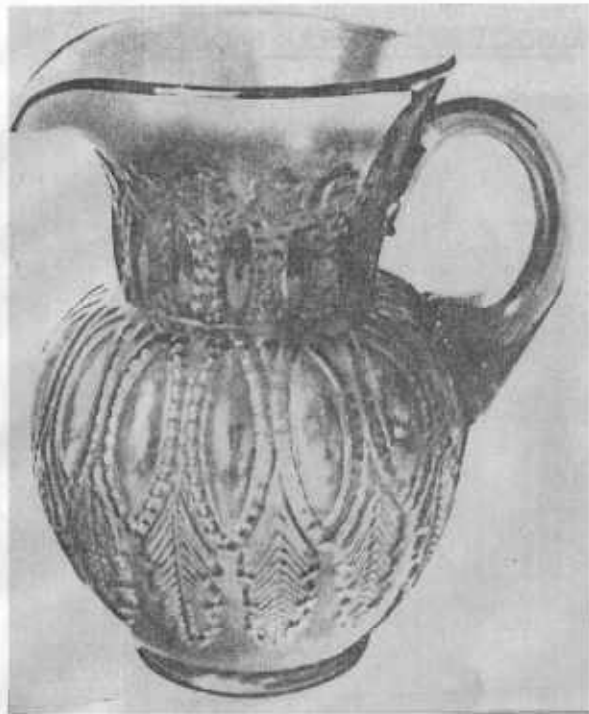
Editor

EDUCATIONAL TUMBLER SERIES



PERFECTION - A MILLERSBURG MASTERPIECE

The name "Perfection" certainly fits this superfine Millersburg tumbler. The pattern is about as near to perfection as anyone could ask for. Mrs. Hartung shows the pitcher to this pattern in her book 5 - page 74 and later describes and sketches the tumbler in book 7 page 110. This pattern was made only in the water set. Collectors search far and wide for both the pitcher and the tumblers in any color. Perfection tumblers are not only considered rare, but they are very desirable as well. They are one of the finest of all our carnival glass tumblers and are outstanding in every detail as to workmanship, design, color and iridescence. The tumblers are most often found in a clear brilliant amethyst and usually have very fine iridescence. I know of only four or five marigold tumblers and three of these definitely show some damage. One green tumbler and several pitchers in that color have been viewed by this writer. Marigold and green Perfection pieces are even more rare than are those in the amethyst color. The tumblers are of standard size and carry a 24 - rayed star figure pressed into the bottom of their base. This is an "all star" tumbler and would be rated in most carnival glass tumbler collectors top twenty five list.



THE VERY RARE PERFECTION PITCHER

Notice the smooth edge top on the pitcher shown. Very rarely one is found that has a ruffled top.

This is No. 46 in this series on carnival glass tumblers. Next month we will discuss a pattern that was made by two different companies that were both large producers of our beautiful carnival glass - - Dugan-Diamond and Fenton. One pattern is known as "Floral & Grape" and the other is called "Floral & Grape Variant". Full details of the difference in these two patterns will be given in next months H.O.A.C.G.A. news bulletin.

John & Lucile Britt



RIBBED ELLIPSE - A FINE CARNIVAL GLASS MUG

The "Ribbed Ellipse" pattern is not included in any of our carnival glass books, to the best of my knowledge. This pattern is described in Kamm book 5, page 70. This is known to be a Higbee pattern. A fine article by William Heacock on Higbee glass was included in the April 1981 Glass Review magazine. The "Ribbed Ellipse" pattern is also discussed and pictured in the October issue of that magazine in an article on cruets by Mary Armonino Early.

The Higbee factory closed in 1916. Higbee thus was producing glass during most of the big carnival glass years. Evidently they at least experimented with iridising glass. The above carnival glass "Ribbed Ellipse" mug is owned by Everett Henry of South Bend, Indiana. We viewed this fine carnival glass mug last summer at the A.C.G.A. convention and was able to photograph it. It is of standard size and the color was sort of amberish marigold with fine iridescence. This is the second one of these that has shown up. Jodi Mitchell recently described one of these in the Texas newsletter that was found by a Texas collector.

Carnival glass collectors should keep this pattern in mind and look for

it in their carnival glass hunting trips. This mug is real nice and would make a fine addition to any carnival glass collection.



HIGBEE PANELLED THISTLE - ANOTHER HIGBEE PATTERN

The above "Higbee Panelled Thistle" tumbler in good marigold with fine iridescence was found by the Whitley's of Houston, Texas. I am showing it here at this time because this is another pattern that was made by the Higbee Company. As far as I know, this is the only piece of this pattern that has been reported in carnival glass. I believe that other pieces in both these patterns will be found in time, as collectors learn what they look like. The "Higbee Panelled Thistle" tumbler will be covered more

fully later in the carnival glass tumbler series.

Pictorial Pattern Parade  
By John & Lucile Britt

\*\*\*\*\*

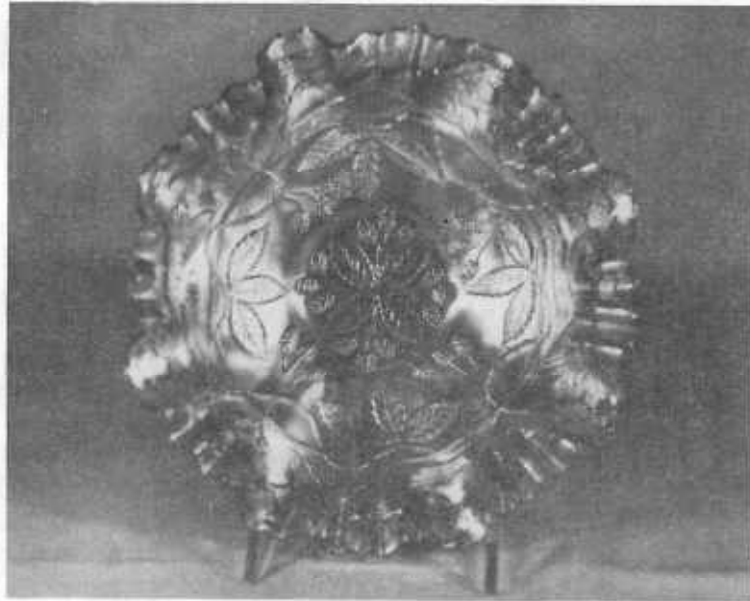
WELCOME NEW MEMBERS

M/M Tony Forrest, Via Drouin, Victoria, Australia  
Bonne Rikke, Granite Falls, Mn  
M/M Emil Campo, Yakima, Wa  
Ethel Madzen, Salem, Mo



# Carnival Cameos

BY DONALD MOORE



WILD BLACKBERRY - This pattern is often confused with Blackberry Bramble. It is the similarity of name that causes the confusion, as the Blackberry Bramble is seen only in a compote and the Wild Blackberry only in a 9" bowl as shown. I have seen references to a Wild Blackberry compote and a Blackberry Bramble bowl, but in all likelihood this resulted from a confusion in pattern names.

These are Fenton patterns, and each can be found in marigold, green, and blue. The Blackberry Bramble compote is readily found, but the Wild Blackberry bowl is more difficult. Even so, it does not command a big price. The one shown here in marigold brought \$45 at the Burn's auction in April of 1980.

MILLERSBURG NOTES #6 - BY BILL EDWARDS

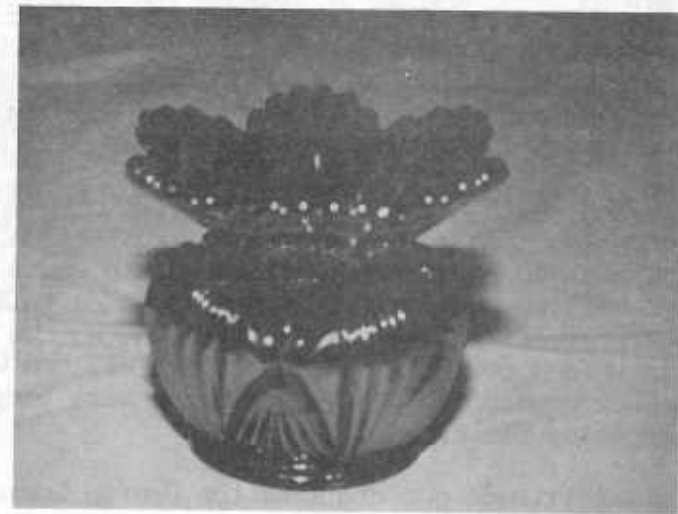
## COUNTRY KITCHEN (POTPOURRI)

While some slight difference exist between the Country Kitchen and Potpourri patterns, I believe they were designed as one, with variations to suit the shapes on which they were used.

The Country Kitchen is most often encountered as the exterior pattern of Fleur de lis bowls, but is also a primary pattern on rare table sets, a rare berry set and the spittoon whinsey shown. The berry sets are seen in marigold only, but the table sets are found most often in dark amethyst, although marigold is known.

Potpourri, varies from Country Kitchen in an added flower of hobnails below the sunbursts and is found mostly in crystal, but is known in iridized glass as the exterior pattern of the beautiful Poppy compote as well as the very rare milk pitcher. The Poppy compotes are found in green, amethyst and marigold, while the two known milk pitchers are in marigold only.

Both Country Kitchen and Potpourri are outstanding geometric near cut patterns, well designed and geometrically sound. They can hold their own with any of the many near cut designs and exemplify the Millersburg flair for quality design.



## MILLERSBURG FESTIVAL

We cannot resist going to Millersburg, Ohio each year in October for their annual festival. I do not believe we have ever missed one and think this year makes 19. We left home Friday October 9th at 6:40AM with temp. 43 degrees and it was not daylight for a while.. As day came the beautiful colored foliage was breathtaking. Fields were white with frost everywhere. We have had no frost in Charleston yet and hoped none would come while we were gone as we left a bushel of green tomatoes in our back yard garden. Also some pretty flowers still blooming.

Most years at Millersburg it seems to be cold and rainy so we hoped for a change this year. We do enjoy the window displays and always see carnival friends to talk with. We stopped at Fenton Glass Company on the way. They have such pretty glass we can never resist buying something when we know we have no where for even a toothpick holder, so we give away some as gifts.

The day was so nice and we picnicked at a small Millersburg park, then drove in to town to look at the display windows. We always go directly to the window the Lowes of Killbuch always use for the very nicest display of all. It was just great as always. She had a lovely marigold cruet in a Colonial type pattern which we don't remember ever seeing before. She thinks its probably Millersburg and it does look like it. Her window features Millersburg exclusively but not all sometimes is carnival. Some items are in the old Millersburg patterns in pressed glass which are quite lovely. The Lowes have a museum and antique shop at Killbuch, Ohio only a few miles out of Millersburg. They always have a wide variety of carnival for sale at the Antique Show held on Saturday and Sunday. Some other windows also had carnival and its always tempting to go in and ask if its for sale but it never has been for us, though we do usually ask.

We drove over to Ashland, Ohio about 40 miles to stay with our relatives Bob and Ruth Kuhl who also have a lovely carnival collection. We were up early Saturday morning to go over to Millersburg to get a good parking spot. You can never believe the crowd that converges on this little town for one of the most interesting festivals held anywhere. We ate breakfast and made a fast trip up and down Main Street to see all the windows again. before the Antique Show opened at 10. There was a very large craft show too and several yard sales for side interests.

We saw several carnival friends but did miss the George Loeschers of Wisconsin, who usually are there looking for the rare carnival. We found

3 pretty wines for our set and a pastel marigold and almost white "Horse Medallion" ruffled bowl. We watched most of the big parade and then had to hurry to Kuhls as guests were coming for dinner. We were very surprised when it turned out to be a 45th wedding anniversary for us with a big special cake and gifts. It was such a nice way to end the day.

We were up on Sunday to go to Canton to visit more relatives and then going home on a beautiful fall day. The foliage never was more colorful. It surely was the very best Millersburg trip ever and made our 45th anniversary a special event not to forget.

There is still Tom Burns auction at Strongsville, Ohio October 16th & 17th and we may head northward again for it. We excuse ourselves for so much traveling by saying we will stay home all winter. Maybe we should go south to join other carnival friends who avoid the winter season each year by going to Florida. It surely is a tempting thought.

Grace & Byron Rinehart  
Charleston, W. Va.

\*\*\*\*\*

Do not write often, but wanted to tell you of a find, that we located at a shop, nearby. We searched through all of our many carnival glass books but could not find any data on it. Maybe, after I describe it, some of the members may have one, or have some information. If so would like to hear from you.

This is a plain light round marigold bowl, not too large, but has four scallops around rim of bowl no pattern. What makes it unusual, is the attachment on each side of a candle holder, giving you the complete table centerpiece in one. We believe it to be in the twenties, it certainly has some age. It has the words on bottom of bowl, "patent applied for", but we do also have the same wording on our white christmas tree bottle, with star stopper and we know that it is from our carnival glass era.

So if anyone can furnish some information on maker or era it was made, would like to hear. 7 1/2 across top 9 1/2 from candle holder to other holder 3 1/4 deep and 4 1/2 collar base.

Ruth & Jimmy Jones  
Richmond, Va



### BURNS AUCTION

The Burns auction of George Veltrop's Carnival Glass collection in St. Louis, Missouri on October 9 & 10 was well attended with some pieces bringing record prices. Tom's method of auctioneering brings not only good prices but he also takes the time to explain various aspects of certain pieces. Although he is of what many of us would consider, tender years, his knowledge of Carnival is quite extensive and he is always willing to share this knowledge. Following is a few of the prices from this auction.

R Cherry Wreath 2 handled bon bon 1550  
B Three Fruits plate 70  
PO Ski Star domed bowl 105  
P N G/C cracker jar 325  
M Good Luck bowl 40  
R Windmill & Mums irid wore in places 550  
M Stag & Holly bowl large 50  
P G/C perfume bottle 435  
A Heavy Iris 7 pc water set check in handle 375  
W N Peacock plate 225  
M April Showers vase 12.50  
P N Ivy Town pump 500  
B Orange Tree Orchard 7 pc water set 750  
B/O Jack in the Pulpit vase 200  
G Dragon & Lotus bowl 52  
W Floral & Grape 7 pc water set 325  
R Horses Head Medallion nut bowl 900  
P N Raspberry 7 pc water set 350  
W Grape Delight rose bowl 65  
M N G/C footed bowl 20

### STRONGSVILLE AUCTION

After being at Millersburg only the week before we hated to make another Ohio trip for Tom Burns auction being held October 16 and 17th. However the resistance was not too strong so off we went early Friday as a light rain began. We figured a stormy week end but nothing deters carnival people once they smell a carnival auction in the wind. Good luck was with us and the weather turned out great. On Saturday Morning ice was an inch deep I think on the car. The first for us this year.

We drove through Millersburg again and missed the pretty window displays they'd had only the week before. They have the best baking there so we stopped for their yummy creme sticks. We picnicked at the park close by and then on our way. The foliage was colorful as a cabinet full of the pretty carnival we all love, the shades go to so many nariogold colors, with the beautiful reds mixed along, also even the purples and also the evergreens reminding one of the helios and other green colors.

We arrived at Strongsville about 2:30-(275 Miles from home). Lots of carnival people there-some had carnival to sell in their rooms. The carnival was already set up to see so everyone ohe'd and ahe'd at the lovely Christmas compote and of course the rare Basket weave cuspidor Tom has been tempting everyone with ever since the A.C.G.A. convention at New Philadelphia, Ohio.

The auction began about 7 Friday night and lasted till around 11 oclock. Selling 125 items. The Peter Rabbit took highest price at \$750. The master punch bowl set was a nice one so brought \$1450.

Extra folk came in for Saturday sale and I'd guess nearly 100 bidding numbers were given out. It was well attended anyway and we loved seeing so many carnival friends. The two big items of interest for Saturday was the pretty Christmas compote and the rare whimsey cuspidor. Can you believe both went to a lady from our neighbor state of Virginia? Compote at 2750 and cuspidor at 2700. Those two items almost a collection by themselves.

We did have to leave before end of sale which took some will power at the time. We were later getting home than we had hoped-having another 200 mile trip the next day for a family 50th anniversary.

Forgot to say the pastels and aqua items went real well too. Also Tom announced a big carnival auction next February 27th at the same Strongsville Motel. The Jack Wilsons will offer their fabulous Millersburg

collection for sale. Probably the largest amount of Millersburg to ever be sold. No one will want to miss the rarities they have found. Such as four "Rose Columns" vases in four colors. The only blue one known. The one big problem might be the Ohio weather. February is not a very dependable month in the east so everyone better keep crossed fingers for clear week end.-that may not actually help but certainly can not hurt to try.

Hope the winter season is as short as the summer seemed to be. Never saw time go so fast.

Grace & Byron Rinehart  
Charleston, W. V.

\*\*\*\*\*

#### AUCTION RESULTS

B Mikado compote scarce 375	P Fine Cut & Roses dish 45
G Peter Rabbit bowl 750	A Stag & Holly ftd bowl 60
PO Apple Blossom Twig ruffled plate 200	W Persian Garden ice cream 150
P Farmyard bowl square 1250	M Two Flowers lg ftd bowl 40
BO File and Fan compote 235	B Grape & Gothic Arch 7pc berry
AO Daisy & Plume ftd rose bowl 1st ever auction 1050	set 135
W Oriental Poppy 5 pc water set 1250	P Nautilus sugar 230
M Two Flowers ftd chop plate 13" 400	G Coral bowl scarce 175
G Trout & Fly bowl 285	IB Hearts & Flower bowl 170
G Detroit Elk bowl rare 650	B Holly plate 100
IB Drapery rose bowl 400	B Orange Tree plate 130
B Fenton Blackberry open edge cuspidor 2700	PO Carolina Dogwood bowl 235
P Christmas compote 2750	PO Honeycomb rose bowl 220
IG G/C covered powder jar 675	M Wine & Roses 7 pc water set 380
EB Fruit & Flowers bon bon 60	M Grape Arbor wt pitcher 1 tum 185
W Peacock at Urn ice cream bowl 180	R Blackberry Spray hat 145
A Embroidered Mums bowl 70	A Butterfly & Berry tumbler 245
W Orange Tree bowl 60	Line G Dragon & Lotus bowl 775
M Panter 7 pc berry set 220	IM Springtime pitcher 225
G Dragon & Lotus ftd bowl 45	A Nippon plate 170
W N Peach 5 pc berry set 175	AO Leaf & Beads rose bowl 135
P Holly Whirl nappy 70	A Beaded Cable rose bowl 100
P Strawberry plate 90	M Square bushel basket 115
W Round up bowl 115	

16

#### TAMPA BAY PLANS GIGANTIC CARNIVAL GLASS JAMBOREE

Lose Your Heart To Carnival Glass will be the theme of a gala one day Jamboree planned by the Tampa Bay Carnival Glass Club to be held in Lakeland, Florida on Saturday, February 13, 1982. The purpose of the meeting is to bring together Carnival Glass Lovers on Valentine's Day week end. The Jamboree will be held at the Lakeland Hilton Inn. Interstate 4 at US 98, Lakeland. A large meeting room will be set up with 8' tables, cloth and skirted and will circle the room in booth fashion. Visitors will have the opportunity to display, sell or trade their glass. The public will be invited during a portion of the day. The Jamboree will conclude with a banquet.

The Hilton Inn is offering a special rate of \$34.00 single, \$38.00 double. Children are free in parent's room. The Inn will honor this rate two days prior to the meeting and two days following the meeting. Lakeland is 30 minutes from Disney World and is the hub of Florida's famous attractions. This offers a chance to plan a vacation and have a fine day of fellowship with Carnival Glass Lovers.

Anyone interested in attending the Jamboree may receive complete registration forms, banquet reservations and brochures by writing to Artur I. Smith, 4535 Holder Court, Lakeland Florida 33803

Plans are being made for a special gala attraction following the banquet but have not been completed at this writing. Watch for more news in the November Bulletin.

Arthur I. Smith  
Tampa Bay Club

\*\*\*\*\*

The Northern California Carnival Club met on October 18, 1981 at the Spengers Fish Grotto in Berkeley, Ca. After luncheon our meeting was called to order by President Mabel Sprain.

The Treasurers report was given by Jun McCarter, Treasurer. Our raffle was won by George Stone, a lovely cobalt vase. The club voted to have our 1982 convention at the Dunfey's Hotel, in San Mateo, Ca.

Election of officers were held and they are as follows: President Reo Nathan, Vice President Erthel Nance, Secretary Thomas Darter, Treasurer June McCarter,

17

Editor Charlotte Williams, Co-Editor Timme Hand.

Our meeting was then turned over to Mr. Don Moore for a current update on the rising value of Carnival Glass. This was beautifully done by displaying pieces in recent auctions and the prices they brought. Thank you Don for the many hours of research and time.

Our guest speaker was George Thomas. He brought a large and beautiful display of his vases, along with alot of information on them all. Well done George.

Our outgoing President, Mabel Sprain is to be congratulated for a year of very hard work, but enjoyable. We are looking forward to our next year and what it will bring.

Jamie Santa, Secretary  
Northern California Club

\*\*\*\*\*

The Air Capital Carnival Glass Club met at the home of Roland Kuhn and Donald Kime on October 11, 1981. Sixteen members braved the rainy weather to attend. We had 2 members who were attending their first meeting and we were glad they could be with us.

Roland Kuhn, President, gave the program on 8 tumblers he had recently purchased at an auction. The rare, purple Harvest Flower was among the 8 he talked about.

Our next meeting will be an out of town meeting where we will be looking at two fine collections in the Kansas City area. Our club has been honored with an invitation to visit Sadie & Herb Treff and Dorothy and R. D. Kavanaugh. We are looking forward to be able to come to Kansas City for our November meeting.

Donald E. Kime Secretary  
Air Capital Carnival Club

\*\*\*\*\*

TAMPA BAY CARNIVAL GLASS CLUB NEWS

The regular monthly meeting of the Tampa Bay Carnival Glass Club was held October 18 at the home of Dorothy and Walter Holzworth at Fort Pierce, Fl. Several members arrived Saturday, October 17 for a special two day affair. The feature for Saturday evening was a slide show depicting Walter Holzworth activities as a deep sea treasurer diver. The group enjoyed the slides as well as Walter's commentary. Special treat was the fabulous cooking of Dorothy Holzworth. Sunday's meeting was conducted by V. P. Art Smith in the absence of President Ruth Argyros. Art gave a report on the clubs National Carnival Glass Week activities. A three day exhibit was held at a local mall. Many interested people stopped by to examine the glass exhibits and ask questions. Two new members joined at the mall and several expressed an intent to attend the next meeting.

Further plans were discussed for the Lose Your Heart To Carnival Glass jamboree to be held at the Hilton Inn, Lakeland, Saturday, February 14, 1982. A hospitality committee of Shirley Conyers and Ruby Pitt was appointed to plan activities as a welcoming group.

On Sunday the club welcomed visitors, Goldie Bergandi, Elizabeith Wigley and Dorothy and Joseph Long. Using the old adage it is never too young to learn the Holzworths and Smiths had their grand-daughters present. Jenny and Melissa had a great time and despite their years (7 & 8) both have a knowledge of carnival glass.

The regular November meeting will be held with Naomi Calkins in Clearwater.

Arthur I. Smith

\*\*\*\*\*

## Tis' A Small World

The sun peeked over the tree tops this A.M.  
Another day had started to go into the usual daily spin  
Looking out and feeling just a little blue  
I think to myself, what different thing today could I do  
Just about this time the sun rays streamed across the room  
And just as suddenly I lost my gloom,  
For brightly glittering on my carnival glass display  
Were colors that twinkled and sprakled and danced and played  
Why not jump into the car and go and seek another prize  
Just like the ones that I did already realize,  
Down the highway and by way we went,  
Just like a hunting dog that had caught the scent  
After traveling what seemed like a few miles down the line  
Just to the left of us, our eyes cast upon a little common sign,  
It seemed to say " come on in and feast your eyes, for I have  
for you a surprise,  
In this lovely cabinet filled with sparkling glass  
Was this little petite bon-bon that really seemed first class  
Also another shelf was a ruffled edged aqua butterscotch bowl  
That would quicken the heart of any soul  
After a cheery chat and much looking and summarizing,  
We purchased these two lovely prizes  
My heart was beating very fast, as I scanned my books when  
we arrived at home at last,  
Really we had only gone about 40 miles from home,  
But was just exciting as the trip we took to Rome.  
For in my hand I held an aqua vintage bowl which gave out a glow  
The other hand beheld a purple Roses & Fruit bon-bon Millersburg  
with radium finish,  
That really did my heart with joy replenish  
So before you go a wandering looking for a prize,  
There may be a little jewel just around the corner, right under  
your eyes.

Written by: Betty Jane

Ivan L. & Betty J. Mitchell  
Houston, Missouri

\*\*\*\*\*



21. INVERTED FEATHER

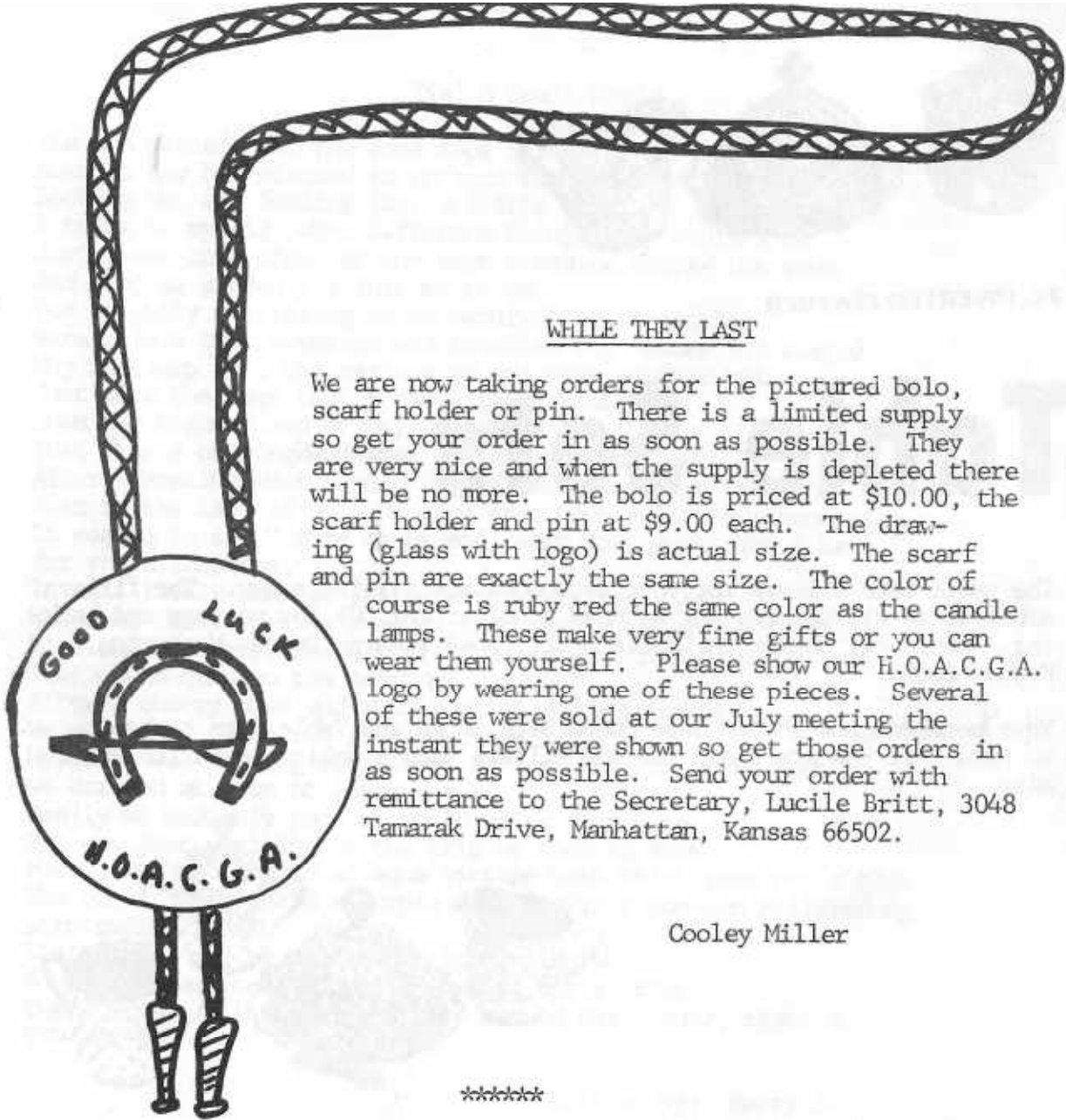
# Table Sets FILLERS

The table sets fillers for your notebooks are available now. The fillers are free to all members but we need a dollar (\$1.00) for postage and packing. Send your dollar to Lucile Britt, 3048 Tamarak Drive, Manhattan, Kansas 66502.

Your notebook now should have Punch Sets, Mugs and Table Sets to be up to date. If you are short the mug fillers send a dollar to Lucile Britt also.



20. HOBNAIL



WHILE THEY LAST

We are now taking orders for the pictured bolo, scarf holder or pin. There is a limited supply so get your order in as soon as possible. They are very nice and when the supply is depleted there will be no more. The bolo is priced at \$10.00, the scarf holder and pin at \$9.00 each. The drawing (glass with logo) is actual size. The scarf and pin are exactly the same size. The color of course is ruby red the same color as the candle lamps. These make very fine gifts or you can wear them yourself. Please show our H.O.A.C.G.A. logo by wearing one of these pieces. Several of these were sold at our July meeting the instant they were shown so get those orders in as soon as possible. Send your order with remittance to the Secretary, Lucile Britt, 3048 Tamarak Drive, Manhattan, Kansas 66502.

Cooley Miller

\*\*\*\*\*

FOR SALE

Lamar Sharp, 719 W. Brubaker Valley Ro., Lititz, Pa 17543 PH 717-626-5521

W	EI	Constellation compote	60
✓	B	EI Mirrored Lotus 7" bowl	45
	DM	EI Pony bowl	75
✓	P	EI Swirled Hobnail rosebowl	275
G	GI	Imperial Grape 7 pc water set Helios	260
M	EI	Imperial Grape 7 pc water set	165
G	GI	Imperial Grape 7 pc berry set Helios	150
M	EI	heavy Grape 7 pc berry set	150
M	EI	Imperial Grape cup & saucer	65
G	EI	Imperial Grape cup & saucer Helios	70

\*\*\*\*\*

Arnie L. Wall, RR #1 Box 77, Horseshoe Bend, Ida, 83629 PH 208-584-3411

P	EI	Petal & Fan Jewel & Heart Ext fruit bowl 11"x3 1/2"	108
G	EI	Good Luck bowl N	138
DM	GI	N Wild Rose plian int shows wear	48
B	GI	Windflower N plate deep scallop	138
G	EI	Beaded Cable rose bowl	85
M	EI	Open Rose Bowl Roses & Leaves	68
DM	EI	Fenton's Heavy Grape	48
B	EI	Pine Cone bowl	38
M	EI	Double Stem Rose compote dome ftd	48

\*\*\*\*\*

Gerald Sappington, 509 Idaho S. E. Huron, S. D. 57350 PH 605-352-7306

Entire collection for sale-one price-all pieces in excellent condition. Send for list or contact.

\*\*\*\*\*

Larry Keig, Box 601, Fayette, Ia 52142 PH 319-425-4467 evenings or weekends

P	(N) Fruits & Flowers 6" ruffled and fluted bowls two with multi colored and two with silvery iria all four \$90	ea 25
M	GI Leaf and Beads rose bowl	35
A	EI Stippled Rays 5 1/2 fluted bowl	12
M	GI Coin Spot compote	18
A	EI Coin Dot 7" fluted bowl	20
M	EI Tree of Life 5" bowl	5
M	EI Stretch 5" bowl	7

\*\*\*\*\*

Eva Backer, 12 Sherwood Rd, West Hartford, Ct PH 232-1027

M	EI Golden Grapes 7" Millersburg Edwards pg 34	35
A	EI (N) G/C candlestick 5 1/2	110
M	GI Stork & Rushes mug strawmark on handle	35
W	EI Brocaded Acorns two handled cake tray shows wear	55
M	EI hobnail Soda Gold spittoon hairline on rim	35
M	EI Orange Tree shaving mug	30
A	EI G/C N tumblers 2 ea	30
M	EI Flute open sugar 4 pinheads on rim	30
M	EI Fenton Round open edge hat	25
M	GI Jack In Pulpit vase	28

\*\*\*\*\*

Dick hatscher, Walnut Hill Rd, Box 261, Bethel, Ct 06801 PH 203-743-1466

Po	EI Nautilus	165
PO	EI honeycomb rose bowl	185
PO	EI Pods & Posies 10" bowl	95
PO	EI Ski Star 11" bowl	50
PO	EI Ski Star crimped 6 3/4 plate very rare	
PO	EI Fish Net epergne base cracked and glued	58
PO	EI Cherries 3 ftd bowl	48
PO	EI Pods & Posies plate 6 3/4	85
PO	EI Northwoods Fan 1 handled sauce boat	65
PO	EI Holly handled sauce boat	45

Send SASE for additional carnival glass

24

George O. McGrew Jr., 6800 Woodward, Overland Park, KS PH 913-262-8822

R	EI Stippled Rays small berry bowls mint reported unused have 2 ea	245
B	EI Stag & holly 9 1/2 ftd deep bowl	165
P	EI Ivy Town Pump N small chip at bottom of handle	260
A	EI G/C spooner	105
A	EI G/C butter dish small flake on top	190
M	EI Dragon & Lotus bowl	35
A	EI N Grape Leaves bowl superb piece	65
AO	EI Fine Cut & Roses candy dish int pattern no camel sm chip on 1 foot	280
C	EI Grape Delight rose bowl bottom of 2 feet chipped	45
M	EI Carnival Holly bowl	40

\*\*\*\*\*

Ralph Blankenbecler, Rt 3, Box 46, Coeburn, Va PH 703-395-2229

M	EI G/C butter dish bottom cracked	75
S	EI G/C sweetmeat nick out of under flange	75
G	EI Hobstar & Feather rose bowl bottom damaged	500
R	H.O.A.C.G.A. loving cup	80
R	H.O.A.C.G.A. whiskey decanter	150
R	H.O.A.C.G.A. corn vase	60
R	H.O.A.C.G.A. hatpin holder	60
P	EI Dandelion tankard pitcher 6 tumblers	850
P	EI NG hat shape	50
G	EI Butterfly Fenton bon bon	50

\*\*\*\*\*

Betty Moye, Rt 3, Nimitz, W. V. 25978 PH 304-466-4524 after 7 PM

W	EI G/C ice cream bowl	225
W	EI Corn vase	225
W	EI Leaf Chain 9" plate flat	125
IG	EI Peacock on Fence 9" plate	225
EB	EI Peacock on Fence bowl	200
M	EI Dandelion mug	125
B	EI Round up plate	225
M	EI Peacock and Urn compote goblet style	65
Teal	EI Stippled Ray bowl	35
M	EI Two Fruits banana bowl	65

25

Don Staley, 1200 Milam St., Suite 3124, Houston, Tx 77002 PH 713-358-0412  
after 5PM

M EI Acorn Burr tumbler	50
LM GI Aztec tumbler	475
LM EI Bouquet tumbler	15
M EI Fieldflower tumbler	25
M EI Hobstar Band variant tumbler	55
M EI hobstar Band tumbler	40
M EI Oriental Poppy 2 tumblers ea	30
M EI Rambler Rose tumbler	25
B EI Rambler Rose tumbler	35
M EI Singing Birds	25

\*\*\*\*\*

Paul Jankauer, 5 Court of Overlook Bluff, Northbrook, Ill 60062  
PH 312-272-4440

W EI Fine Cut & Roses footed candy dish	60
B EI Three Fruits 9" plate elect blue irrid	85
M EI G/C hatpin holder	110
W EI Pona Lily 2 hndld bon bon	65
G EI Millersburg Whirling Leaves tri comered bowl	195
B EI Kittens cup and saucer	675
G EI 9" G/C adv plate Old Rose Distillery	95
B EI Fenton Peacock at Urn elec blue irrid	70
M EI Oriental Poppy tumbler	25
B EI Lily of the Valley pitcher heat check	1300

\*\*\*\*\*

Mrs. Leslie Tuthill, Box 201, Lee Center, N. Y. 13363 PH 315-337-9118

B GI Cherry Circles 2 handled bon bon	35
M EI Frosted Block square plate	20
M EI Cosmos variant bowl	20
M GI Poodle powder jar	8
M EI Little Flowers berry dishes	12
M EI Oval & Round bowl	12
M GI Two Flowers bowl spat feet sm flake on tooth	10
M EI Bushel basket flake on handle	22

26

M EI Pineapple bowl	35
M GI Shell and Jewel covered sugar tiny flake on rim	22

\*\*\*\*\*

Edna Burns, 145 Union St., So. Weymouth, Mass 02190 PH 617-335-3178

G EI Grape & Gothic Arches sm berry bowl	30
M GI Two Fruits divided bon bon	40
W EI Fenton Open Edge basket round ruffled	35
W EI Fenton Open edge basket square shape	35
B EI Sailboats 6" ruffled bowl sm. rough spot on edge	50
Lav EI Peacock & Grape 9" ruffled bowl	100
G EI Greek Key 9" ruffled bowl basketweave ext (N)	65
M EI Three in One 7 pc berry set	40
A EI Strawberry 9" flat plate basketweave ext (N)	80
P EI Carnival hatpins 3 Scarab, 1 Cattails ea	20

\*\*\*\*\*

Helen Nadeau, 18 Thomas Olney common, Providence, R. I. 02904

P EI Maple Leaf ice cream master bowl	95
P EI S Repeat punch cups 3 ea	35
P EI Fishermans mug	95
P EI Vintage epergne	135
P EI N/G hat pin holder	155
G EI Fenton Flowers 6 pc berry set	200
G EI Nesting Swan bowl	220
G EI Trout & Fly bowl	335
M EI Sunflower footed bowl	25
B EI Dragon & Lotus bowl	35

\*\*\*\*\*

A. A. Fogleman, 2300 Hemlock Dr. High Point, N. C. 27260 PH 919-454-3267

AO EI Three Fruits spatula ftd bowl	225
IB EI Embroidered Mums bowl	125
P EI Wreathed Cherry banana boat	115
W EI Bushel basket flared top (N)	170
M EI Zippered Loop lamp lrge	275
M EI horses Head Medallion rose bowl	165

27

M EI	Peacock at the Um plate	130
M EI	11 1/2 Heavy Grape chop plate	150
M EI	G/C hat pin holder	115

\*\*\*\*\*

Omer Sweeney, 28 Esmond Street, Esmond, R. I. 02917 PH 401-231-4108

B EI	Peacock at the Fountain 7 pc water set	490
M EI	Grape Arbor fruit bowl	80
M EI	N/Grape cologne bottle	155
M EI	N/Grape dresser tray	145
M EI	Imperial Grape 6 pc water set	155
M EI	Hobnail Swirl rose bowl	200
M EI	Little Fishes master berry bowl	140
M EI	Butterfly & Berry 7 pc water set	280
M EI	N/Grape shot glasses 2 ea	165
M EI	Springtime water set	375

\*\*\*\*\*

Jane LeBlanc, 1 Circle Rd., Smithfield, R. I. 02917

W EI	Dahlia sugar bottom	75
M EI	Little Fishes footed bowl	100
M EI	Grape Arbor 7 pc water set	410
M EI	Horses Heads Medallion bowl	90
M EI	Windmill & Mums 10 1/2 bowl	65
M EI	N/G 8 pc punch bowl set	320
M EI	Fentons G/G fruit bowl Persian Medallion int	95
M EI	Peacock & Um Fenton 8" bowl	50
M EI	N/G/C banana boat	175
M EI	hobstar & Feather punch cup 2 ea	20

\*\*\*\*\*

Mary Kesterson, 3020 Mesa Rd, Willow Park, Tx 76086 PH 817-441-8410

P EI	Raspberry milk pitcher	185
P EI	Swirl Hobnail spitoon Millersburg	525
P EI	G/C perfume bottle	495
M EI	Pony bowl	60
W EI	Flared basket (N)	95

28

M EI	Kittens cereal bowl	120
M EI	Kittens cup	75
M EI	Kittens cup & saucer	265
M EI	Kittens 4 sided dish	95
M EI	Kittens spooner rough edges	97

\*\*\*\*\*

Wayland Billingsley, 206 N Union St., Appleton, Wi 54911 PH 414-733-3102

M EI	Star & File decanter w stopper & 4 wines	195
M EI	Heavy Grape 7 pc berry set Fenton	115
A EI	Diamond & Sunburst wine decanter w stopper & 4 wines	340
A EI	Peacock at Fountain butter dish , creamer with no harm flake on side of spout & creamer	375
S EI	Grape 10 3/8 bowl Imperial	37
B EI	Poppy pickle N	57
B EI	Grape fernery or nut bowl	53
G EI	Singing Birds pitcher 6 tumblers one with no harm flake on rim	550
A EI	Milady tumbler rare	65
A EI	Milady tumbler rare chip on bottom	35

\*\*\*\*\*

Mrs. Clarnece Osterbuhr, 802 hackberry, Garden City, Ks 67846 PH 316-275-5615

S EI	Star Medallion milk pitcher	45
S EI	Basket plain 10" tall	65
W EI	Basket plain 10" tall	30
A EI	Floral & Grape varient tumblers 5 ea	25
G EI	Singing Bird tumblers 3 pin point nicks ea	26
M EI	Vintage Banded cider pitcher pedestal base rare	55
M EI	Prism Band, forget-me-not tumbler	15
M EI	Lustre & Clear buttermilk pitcher	20
M EI	Star Medallion milk pitcher	25
M EI	Waterlily & Cattails tumblers 6 all	90

\*\*\*\*\*

29



Singleton and Cheryl Bailey, Box 95, Loris S. C. 29569 PH 803-756-4021  
after 6

M EI	G/C sherbert	15
B EI	Orange Tree butterdish lid nicks	15
W EI	Three Fruits dome ftd bowl	65
B EI	Peacock at Fountain tumblers 4 ea	35
M EI	G/C card tray	50
P EI	G/C plate 2 sides up	75
P EI	Peacock at Fountain 7 pc berry set	195
B EI	Peacock at Fountain orange bowl	240
B EI	Orange Tree punch bowl /base/6 cups	250
G EI	Seacoast pin tray	275

\*\*\*\*\*

A. C. Dickey, 144 Chandler St., Vacaville, Ca 95688 PH 707-448-9386

M EI	Raspberry 7 pc water set	250
M EI	Lattice & Grape 7 pc water set	250
M EI	Grape Arbor 7 pc water set	325
M EI	Bouquet tumblers 4 ea	25
M EI	Raspberry tumblers 3 ea	30

\*\*\*\*\*

Norma Wagner, 302 Main, Bagley, Ia 50026 PH 515-427-5749

M GI	Ruffled vase Acorn shape in metal holder	
A EI	10" vase	
P EI	8 1/2" vase	
B EI	9 1/2" vase	
M EI	6 1/2" vase unusual cut pattern crack on neck	all for 175
S EI	15" wide panel cake plate	75

\*\*\*\*\*

Joseph Mello, 535 Fish Rd, Tiverton, R. I. Ph 401-624-2174

G EI	Imperial Grape punch bowl top	75
G EI	Stippled Rays compote (N)	15
B EI	Grape & Gothic Arches creamer	40
A EI	Raindrops bowl dome ftd base chip	10
W EI	Grapevine Lattice plate	40
M EI	Memphis punch cups 4 ea	15
M EI	Panelled Dandelion tumbler	35
M EI	Strawberry bon bon Fenton	15
M EI	Lattice & Grape tumblers 4 ea	15
M EI	Imperial Grape wine stemmed	20

\*\*\*\*\*

Bonnie Parkhurst, Rd 1 Box 87, Canastota, N Y 13032 Ph 315-337-9118

M LI	Millersburg Vintage Sherman Hand book collectors Enclly page 99	25
A GI	Fine Cut & Roses rose bowl nick on rose feet ok	40
M EI	Ripple vase 9 1/2	17.50
PO GI	Smooth Panels vase little rough on base	42.50

\*\*\*\*\*

Michael Basey, 4315 Adams, Kansas City, Kansas 66103 PH 913-432-2460

M EI	Good Luck bowl (N)	75
M EI	Fentons Banded Blackberry hat shape	20
IB EI	Concave Diamonds tumbler	25
M GI	Fentons Flowers rose bowl	45
M GI	Star Medallion milk pitcher	22
M GI	Louisa ftd nut bowl	12
B EI	Orange Tree powder jar & lid slt rough on inside of lid	70
Clambroth EI	Imperials Wide Panes bowl with old iron cross mark	20

\*\*\*\*\*

Edward Henderson, 1111 N. College, Stuttgart, Ark 72160 PH 501-673-8757

LM EI	Diamond & Thumbprint bowl	30
M EI	Flower & Loops bowl	50
M EI	holly Spray bowl	30
M EI	Imperial Grape bowl	25
M EI	Open Rose 3 ftd cracked bowl	35
C EI	Persian Medallion 4 cracks have to hold to light	30
LM EI	Ribbed bowl	40
M EI	Rococo bowls 4 ea minute chips on bases	12.50
A EI	Stippled Ray (N) bowl minute chip bottom at seam base	50
A EI	Twelve Point bowl	45

\*\*\*\*\*

Leonard & Roselle DeCarli, 18 Grant St., Rockville, Ct 06066 PH 203-871-1514

P GI	Cherry Wreath lrg oval berry bowl	95
M EI	Thistle & Thorn ftd nut bowl	50
G GI	Crab Claw bowl slt bruise	45
M EI	Diamond Lace bowl	30
P EI	Butterfly & Berry sml berry bowl	25
M EI	Butterfly & Berry berry bowl	15
M EI	Apple Blossoms bowl	35
M EI	Butterfly & Berry tumbler	20
M EI	Oriental Poppy tumbler	40
M EI	Grape & Cable (N) hatpin holder	125

\*\*\*\*\*

Dick Wetherbee, 847 Stafford St., Rochdale, Ma 01542 PH 617-892-4420 Aft 6PM

M EI	Sunflower w/Meander back ftd bowl	40
M EI	Horseheads Medallion Jack in Pulpit shape ftd bowl	58
P EI	(N) Greek Key w/basketweave back low bowl	85
M EI	Panther sm berry bowl	35
M EI	Rose Show bowl super irid	110
P EI	Double Stem Rose dome ftd bowl radiun.	38
M EI	G/C w/Meander back ftd bowl	28
M EI	Poinsetta & Lotus ftd master berry bowl	40
P EI	Tortoise Shell type hat pin long stem	18
M EI	Melon Rib sugar & creamer	12

Shirley Goolsby, 1809 Larkspur In, Ceres, Ca 95307 PH 209-537-8244

P EI	Imperial Grape tumblers 6 ea	38
M EI	Fruit & Flowers compote	40

\*\*\*\*\*

Jim McClure, 116 Mansfield St., Belvidere, N.J. 07823

P EI	Fruits & Flowers ruffled sauce basketweave back N	30
P EI	Scroll Embossed plate	75
IB EI	Wide Panel curved side lillies ea 65 or all three for	150
G EI	Butterfly & Berry ruffled master berry bowl minor pin nick on one foot	75
A EI	Diamond Lace tumblers ea 45 or 4 for	160
P EI	G/C tumbler N	30
P EI	Singing Birds tumbler N	40
PG EI	Drapery vase N	50
DM EI	Springtime small berry N	25
G EI	Rustic vase 14"	35

\*\*\*\*\*

Barbara Farmer, RD 5 Box 462, Wheeling, W. V. 26003 PH 304-336-7689

P EI	Nautilus unsigned	195
P EI	G/C (N) hat pin holder	165
P EI	G/C (N) butter dish chips on bottom base	150
M EI	Lustre Rose butter dish	45
B EI	Peacock at the Fountain punch cup	20

\*\*\*\*\*

WANTS

Barbara Rowe, Shoreham, Vt, 05770 PH 802-948-2090

B Orange Tree punch base

\*\*\*\*\*

Charlie Drake, 601 Garwood, Smithville, Tx 78957 PH 512-237-2840

D Apple Twig plate  
D Bernheimet Adv bowl  
D Dandelion mug  
D Exchange Bank adv plate  
D Greengard Furniture adv bowl  
D Heron mug  
D Isaac Benesch bowl  
B Millersburg Multi Fruits & Flowers punch cups  
D Singing Birds mug  
R Orange Tree mug

\*\*\*\*\*

Arnie Wall, RR 1 Box 77, Horseshoe Bend, Id 83629 PH 208-584-3411

B Fine Cut & Roses rose bowl other colors acceptable  
PO Honeycomb rose bowl  
B Horses Heads Medallion rose bowl  
IB Any Design rose bowl  
IG Any Design rose bowl  
All Any and all creatures great & small especially Kangaroo

\*\*\*\*\*

Lamar Sharp, 719 W Brubaker Valley Rd, Lititz, Pa 17543 Ph 717-626-5521

IB G/C lid for powder jar  
IB G/c base for medium punch bowl 5" across top of base

\*\*\*\*\*

34

Dick Hatscher, Walnut Hill Rd., Box 261, Bethel Ct 06801 PH 203-743-1468

Hearts & Flowers compotes and any PO pieces, R, AO and carnival glass on milk glass

\*\*\*\*\*

Eva Backer, 12 Sherwood Rd., West hartford, Ct PH 232-1027

M Octogon stopper for wine decanter and wine glasses  
Imperial Star of David Helios green  
M Star of David bowls

\*\*\*\*\*

Larry Keig, Box 601, Fayette, Ia 52142 PH 319-425-4467 evenings or weekends

P (FA) Grape and Cable powder jar cover  
P Imperial Grapes wine decanter stopper  
M Wide Panels console set bowl  
G Inverted Strawberry powder jar cover  
B Orange Tree powder jar cover  
M Amana, Iowa miniature mug Near Cut  
M Britt, Iowa souvenir basket  
M Diamond Piint Columns master berry bowl  
M G Pulled Loop vases 11" 12"

\*\*\*\*\*

Mary Kesterson, 3020 Mesa Rd, Willow Park, Tx 76086 PH 817-441-8410

P Bushel basket (N)  
AO Drapery rose bowl  
IG Fruits & Flowers bon bon stemed (N)  
P Fishemans mug  
W Wishbone & Rings bowl 3 ftd  
P Peacocks on Fence plate (N)  
IG Bushel basket (N)  
IG Leaf Chain plate  
M Brooklyn Bridge bowl  
P Butterfly & Tulip large bowl

35

Don Staley, 1200 Milam St., Suite 3124, Houston, Tx 77002 PH 713-358-0412  
after 5 pm

M EI Imperial Grape wines need 10  
P EI Heart & Flower compote  
G EI Heart & Flowers compote  
W EI Floral & Grape tumblers  
IB EI Fenton ruffled basket  
G EI G/C tumblers

\*\*\*\*\*

Leon Spangler, 306 Wagenseller St., Middleburg, Pa 17842 PH 717-837-0238  
days 717-837-0478 nights

Old carnival: oil lights, hanging lights, table lights, etc

\*\*\*\*\*

A. C. Dickey, 144 Chandler st., Vacaville, Ca 95688

G Butterfly & Berry water pitcher

\*\*\*\*\*

Mrs. Leslie Tuthill, Box 201, Lee Center, N. Y. 13363 PH 315-337-9118

M G/C breakfast sugar  
P Fishnet base for epergne  
P Springtime sugar top  
P Springtime spooner & creamer  
B Peacock at Fountain butter dish  
M Maple Leaf sugar top  
A Maple Leaf sugar top  
M Maple Leaf creamer

\*\*\*\*\*

36

Doris Posey, Box 433, Waukomis, Okla 73773 PH 405-758-3807 after 5PM

M Lustre Rose spooner  
M Lustre Rose creamer

\*\*\*\*\*

Burney Talley, 1814 Slate N W, Albuquerque, N M 87104 PH 505-242-1261

P Imperial Grape wine decanter stopper  
P Imperial Grape wines need 4

\*\*\*\*\*

Singleton Bailey, Box 95, Loris, S. C. 29569 PH 803-756-7495

Big Fish or Trout & Fly pieces  
Millersburg Peacock pieces  
Courthouse bowl  
Any Millersburg compotes  
G Acorn Burr covered sugar  
B Orange Tree ftd covered sugar  
P Dandelion N mug

\*\*\*\*\*

Guy Hulett, Jr. Box 363 Antrim, N H 03440 PH 603-588-6705 after 6pm

M Grape Delight nut bowl  
G Peacock Tail Var compote  
A Peacock Tail Var compote  
A Singing Birds butter top  
All must have excellent irid

\*\*\*\*\*

37

Bill Rudd, Box 243, Reidsville, N. C. 27320 PH 919-349-7285

- M Milady tankard
- M Lattice & Grape tankard
- P Singing Birds tumblers 2

\*\*\*\*\*

Joseph Mello, 535 Fish Rd, Tiverton, R I PH 401-624-2174

- A Wreath of Roses base to punch set
- G Imperial Grape punch cups 2
- M Peacock at Fountain pitcher to table set
- M Acorn Burr punch bowl top
- B Lattice & Daisy water pitcher
- P Imperial Grape punch cups 6
- A Wide Panel epergne base
- G Fenton basket
- W Fenton basket

\*\*\*\*\*

Roland Kuhn, 1202 W 4th St., Haysville, Ks 67060 PH 316-524-3123

- P Raspberry tumblers need 6
- G G/C creamer
- B Orange Tree ftd creamer
- A Panelled Dandelion tumblers 3

\*\*\*\*\*

A. O. Cromer, 1150 N Topeka, Wichita, Kansas 67214 PH 316-262-1775

- A Fishnet epergne base
- B Panelled Dandelion tumblers 4
- A Diamond Lace tumblers 4

\*\*\*\*\*

38

Shirley Goolsby, 1809 Larkspur Ln, Ceres, Ca 95307 PH 209-537-8244

- W Northwood Poppy pickle dish
- IB Northwood Poppy pickle dish
- IG Northwood poppy pickle dish
- AMB Northwood Poppy pickle dish
- AMB Fine Cut Roses rose bowl
- IG Fine Cut Roses rose bowl
- IG Beaded Cable rose bowl
- P Poppy Show bowl
- G Poppy Show bowl

\*\*\*\*\*

Leonard DeCarli, 18 Grant St., Rockville, Ct 06066

- M Imperial Grape punch cup 1
- M Imperial Grape wine stopper
- M 474 punch bowl base
- M 474 punch cups

\*\*\*\*\*

Barbara Farmer, RD 5, Box 462, Wheeling, W V 26003 PH 304-336-7689

- A Pine Cone plate
- W Persian Garden bowl 6"
- G N Bushel basket
- IB N Bushel basket

\*\*\*\*\*

39

THE 1981 H.O.A.C.G.A. SOUVENIR

GRAPE & CABLE CANDLELAMP IN RUBY RED



40

ORDER FORM FOR 1981 H.O.A.C.G.A. SOUVENIR

PLEASE MAKE CHECKS PAYABLE TO H.O.A.C.G.A. AND SEND THEM TO:

MRS. LUCILE BRITT  
3048 TAMARAK  
MANHATTAN, KANSAS, 66502

WILL PICK UP \_\_\_\_\_ 1981 SOUVENIRS AT \$150.00 A PAIR      TOTAL: \_\_\_\_\_  
(INDIVIDUAL PRICE \$ 75.00)  
ADD \$3.00 POSTAGE FOR EACH LAMP

PLEASE MAIL \_\_\_\_\_ 1981 SOUVENIRS AT \$150.00 A PAIR      TOTAL \_\_\_\_\_  
(INDIVIDUAL PRICE \$ 75.00)  
ADD \$3.00 POSTAGE FOR EACH LAMP

PLEASE PRINT FULL NAME AND ADDRESS: \_\_\_\_\_  
\_\_\_\_\_  
\_\_\_\_\_  
\_\_\_\_\_

PLEASE RETURN THIS ORDER FORM ALONG WITH YOUR PAYMENT IN FULL TO THE ABOVE ADDRESS. THANK YOU AND REMEMBER THERE IS ONLY A LIMITED AMOUNT BEING MADE SO THEY WILL BE GOING FAST.

SPECIAL NOTICE

AT THE MARCH MEETING OF H.O.A.C.G.A. IT WAS DECIDED BY MAJORITY VOTE TO ALLOW EACH MEMBERSHIP TO PURCHASE TWO PAIRS OF LAMPS OR A TOTAL OF FOUR SINCE THERE HAVE BEEN SO MANY PAIRS SOLD AND INQUIRIES AS TO WHETHER A PAIR CONSTITUTED ONE PURCHASE AND IF SO IF THEY WERE ENTITLED TO ANOTHER PAIR.

41