

NOVEMBER MEETING OF H.O.A.C.G.A.

The November meeting of the H.O.A.C.G.A. was called to order at 2 PM at the Overland Park Holiday Inn. The attendance was very good with a few out-of-town members. We were very pleased to have these members present.

The minutes of the last meeting were read by Donald Kine and approved as read.

The Treasurer, Elizabeth Bolles, gave a financial report with the balance on hand as of November 20 of \$16,417.76. It was requested by Rosa Grissom to have the report corrected to read the cost for the candle lamp fillers to be \$250.00 plus postage instead of \$261.50 as a total price.

Cooley Miller gave a report on the souvenirs. The little mugs (table favors) for 1981 in vaseline should be available any day now. The 1982 cobalt mugs will be ready for shipment in March. Mr. Miller then showed to the club the two samples of Ice Blue sent by Fenton for the corn vase. They were nice but did not compare with the blue shade used for the 1980 hatpin whimseys. This shade has copper in the glass and gives a much more authentic appearance. Mr. Fenton explained that to have this 'copper blue' he would have to add an additional charge of \$2.50 to each piece for the added labor involved in cleaning the mold before and after the pouring. The members decided it would be much more attractive to have this color and for the Club to absorb the extra charge.

Bob Grissom reported that he is continuing to collect and secure pictures for the 1982 fillers for the notebook.

Janet Zahn, Convention Chairwoman, reported that her committee is formed and will be meeting and making plans on a regular basis. Also, she is continuing to look into obtaining the entertainment for the convention. The banquet dinner will be 'prime rib' again this year with more later on this.

With all members anxious to get on with the swap and shop, the meeting was called to a close by President, George McGrew, with a reminder that there will be "NO MEETING IN DECEMBER." The next meeting will be the fourth Sunday in January at the Overland Park Holiday Inn, 63rd. & Metcalf. See you then.

Secretary Lucile Britt (L. McGrew)

President George O. McGrew, Jr.

CORRECTION PLEASE NOTE

In the November bulletin it was reported that reservations could not be made at the Holiday Inn, until February 1, 1982 for the H.O.A.C.G.A. convention. You will now be receiving a letter in the mail separate from the bulletin with reservation cards, summary of events for the convention and other pertinent information regarding the convention. This letter will be sent sometime during the month of December so just as soon as you receive the reservation cards you can mail them in.

BROCHURES AVAILABLE

Brochures and a list of the prices at auction of the Cooley Miller auction, April 25, 1981 are still available. If you will send \$2.50 to Elizabeth Bolles, 5204 Catalina, Shawnee Mission, Kansas 66205, she will mail them to you. This is the prices of the auction at the 1981 convention.

ANYONE INTERESTED

If anyone is interested in taking pictures for the 1982 H.O.A.C.G.A. convention please contact George McGrew Jr., 6800 Woodward, Overland Park, Kansas 66204. Phone 913-262-8822

HISTORIAN NAMED

Faye Ronk has graciously accepted the position as Historian for the H.O.A.C.G.A. She welcomes news concerning our club or related Carnival material. Please send any material you may want to contribute to, Faye Ronk, 5234 Outlook, Mission, Kansas 66202

Welcome back Faye.

SOUVENIRS

LAST CHANCE - This is your last opportunity to order one of the 1980 Ice green hatpin holders. Those souvenirs that have not been ordered by January 1, 1982 will be destroyed. Approximately 40 remain to be sold. Members may order as many as they want. If you want one of the 1980 souvenirs, your order should be sent to the Secretary, Lucile Britt, before January 1, 1982.

1981 SOUVENIRS - GRAPE & CANDLE LAMP

A few Candle Lamps are still available. A colored brochure was included in the November Bulletin showing the actual size of the candle lamp. The lamps are very attractive souvenirs and any member who has not ordered should do so as soon as possible. Remember, each member may purchase a single lamp or a pair, whichever is desired by you. Rosa and I have a pair of lamps on the mantle over the fireplace. She can hardly wait to start decorating for the holidays with her beautiful lamps to be the center of attraction. Not only is the lamp a desirable item to any collection but it would also make a truly beautiful Christmas gift.

HAPPY HOLIDAY SEASON TO YOU ALL

Bob & Rosa Grisson
Souvenir Chairman

WATER SETS - 1982 NOTEBOOK FILLERS

The 1982 filler for the H.O.A.C.G.A. notebook will be Water Sets (a pitcher and one tumbler). The water sets will be divided into approximately 50 sets per year until all water sets have been included. The first year will include those sets alphabetically from A through I.

I am in need of several photographs for the first portion. The following

is a listing of needed patterns:

Apple Tree
Banded Diamonds
Blueberry
Cathedral
Cherry & Cable
Concave Diamonds
Cosmos & Cane
Crab Claw
Dahlia
Double Star
Engraved Grape
Feather & heart

Fentonia
Field Flower
Field Thistle
Flute & Cane
Four Seventy Four
Gay Nineties
Grape & Gothic Arches
Harvest Flower
Imperial Grape
Inverted Fan & Feather
Inverted Feather

If you have a pitcher and at least one tumbler in any of these patterns and you would be willing to help by having your sets photographed and supplying a photo of them, please let me know which sets you have. I will send you information as to how to display your set and the size of photograph to supply.

Your help is needed.



Bob Grisson
Chairman

EDUCATIONAL TUMBLER SERIES

FLORAL & GRAPE and FLORAL & GRAPE VARIANT

Generally speaking, these two rather common tumbler patterns, one known as "Floral & Grape" and the other as "Floral & Grape Variant", do not create too much excitement by tumbler collectors when found, especially the more advanced collectors. Two exceptions to this would be the white "Floral & Grape" tumbler and the green "Floral & Grape Variant", both being a little hard to find. No reflection against the "Floral & Grape" and "Floral & Grape Variant" tumblers or water sets, because they are indeed pretty and surely collectable. The fact that so many of them were made and sold proves that housewives of that era must have liked and purchased them quite often. Also the fact that two different companies made their version of this pattern implies to us that the pattern must have been very popular and sold exceptionally well. I would like to relate to these two tumblers as "sister patterns" or even "twins", but since they were indeed made by two different factories, I will just call them "look alike" patterns. For instance we will sometime see a person in real life that looks a lot like someone we know real well. This is true with these two patterns.

Common as they might be, these are two of our most confusing and interesting patterns, in my opinion. In the following analysis, I will try to explain why I think so. At one time, both of these versions of "Floral & Grape" were thought to have been made by Fenton. It was considered that when the first mold was worn out that Fenton just had another mold made to replace the first one. In so doing the second mold was supposedly made a little different. This is logical thinking of course, but research has proven this to be wrong in this particular case. Tumbler collectors have spent many long hours studying and comparing the many different variations in tumblers of all patterns. My first clue that these two variations of "Floral & Grape" were not made by the same company was when Wright had the "Floral & Grape" tumbler reproduced in custard glass. These rather new custard glass tumblers are just like the old carnival glass "Floral & Grape" tumblers--not the "Floral & Grape Variant" which was made by Fenton. This suggested to me that what is called "Floral & Grape", had to be made by a different company, because there was no way that the Fenton company would allow Wright to get one of their molds. At that time I suspected that "Floral and Grape" was Northwood and the "Floral & Grape Variant" to be Fenton, since the old molds that Wright purchased were said to be Northwood molds. Of course this was before the extensive research on the Northwood-Dugan-Diamond factory which was located at Indiana, Pennsylvania. Through this

research we now know that the "Floral & Grape" is a Dugan-Diamond pattern and that the "Floral & Grape Variet" was made by Fenton. I would like to point out at this time, if you do collect or sell custard glass, remember that those custard "Floral & Grape" tumblers are not old. Wright also had custard tumblers made in the "Rambler Rose" and "Harvest Flower" patterns. None of these were ever made in old custard glass. You will find some of these tumblers marked with the "N" in a circle and some with what I call a wobbly "W", which is the "N" with a small wing extending from the bottom of the "N" out to the left. When the Wright people had these tumblers marked with the "N" or the "N" with a wing, they forgot one important thing. They put these marks on the bottom of the base of their tumblers. In my research, I have never seen an old Northwood tumbler with the underlined "N" in a circle placed on the outside bottom of the base. We have in our collection some one hundred and fifty Northwood signed tumblers in carnival glass, custard and pressed glass. Every single one of these have the mark on the inside bottom of the base. Don't let anyone try to sell you one of these custard "Floral & Grape, Rambler Rose or Harvest Flower" tumblers for old, even though they might be signed with a "N" in a circle. The Fisherman and Beaded Shell mugs in custard are also included in this category. They too are not old.



Shown here are some Dugan-Diamond tumblers. The center tumbler is a frosty white and is a tumbler collectors favorite. This "Floral & Grape" tumbler actually has a number of minor differences from the "Floral & Grape Variet", but there are two main differences. (1) The mold lines on the Dugan-Diamond tumbler are partially covered with the grape clusters, vines, and leaves. It sort of looks like the vines are growing up the mold lines. This is not true with the Fenton version or "Floral & Grape Variet", where the mold lines are completely clear from the grapes, leaves and vines. (2) Both tumblers contain a ribbed band that encircles the tumbler. On the tumbler these ribs lean to the right on both the "Floral & Grape" and the "Floral and Grape Variet". The Dugan-Diamond "Floral & Grape" tumbler however, has a raised cable that borders the band. If you look closely you can detect these cables on the three "Floral & Grape" tumblers in the picture above. This raised line or cable is not on the Fenton Variet tumbler. I have seen the "Floral & Grape" tumblers in marigold, cobalt blue, amethyst and frosty white. I have never seen the "Floral & Grape Variet" in white, even though it is possible that they do exist, since Fenton made some white carnival.

FLORAL & GRAPE VARIENT, A FENTON PATTERN



Note that the mold lines on these Fenton tumblers are completely clear from the grapes, flowers and vines. There is also no raised cable that borders the ribbed bands on the "Floral & Grape Variant". Usually, the variant tumblers are a little taller than the "Floral & Grape" tumblers. This is not 100% true however, as I have seen a few of the "Floral & Grape" tumblers just as tall as the variants. The two differences I have pointed out above are the best ways to tell them apart. I have seen the "Floral & Grape Variant" tumblers in marigold, cobalt blue, amethyst and green. The tumbler on the right is in green and is an outstanding example of this pattern. I might mention here, while speaking of colors, that I have never seen the Dugan-Diamond "Floral & Grape" tumbler in green. This does not surprise me much however, because how many Dugan-Diamond carnival glass pieces of any pattern have you ever seen in green? Think about this for a few minutes.

FLORAL & GRAPE WATER PITCHER



Notice that in the water pitcher, the ribs lean to the left on this Dugan-Diamond version. Also note that the band of ribs are bordered by a cable. The "Floral & Grape" water pitcher is covered with clusters of grapes, vines and flowers on both sides. There are many more of these clusters of grapes than is found on the Fenton "Floral & Grape Variant" pattern.

FLORAL & GRAPE VARIENT PITCHER



This Fenton pitcher has no cable that borders the ribbed band. Also the ribs lean to the right. The clusters of grapes are nearly all on the front of this pitcher. Remember that the ribs lean to the left on the Dugan-Diamond "Floral & Grape" pitcher while they lean to the right on the Fenton "Floral & Grape Varient". On the tumblers, the ribs lean to the right in both versions.

We hope this article, which is #47 in this series, will help our many new collectors in identifying these two patterns. After you see a few of these it is really quite easy to distinguish them apart. Next month we will discuss a Northwood pattern-the beautiful Springtime tumbler. (Note) Due to the length of this article, we will omit the Pictorial Pattern Parade item this month. We would also like to wish you all a very Merry Christmas and a Happy New Year.

Carnival Cameos

BY DONALD MOORE



PALM BEACH WHIMSEYS - This is a U.S. Glass Company pattern. I doubt that any pattern in Carnival was used as extensively for whimses as the Palm Beach shown here. In addition to these two pieces, other known whimses are several variations of vases, rose bowls, and hat shapes. Most of these, like those shown above, were shaped from the spooner.

White and marigold are the colors usually associated with this pattern, but a few pieces have turned up in a pale amethyst, as is true of the pinched in bowl shown above on the left. The standard shapes in this pattern include a table set, berry set, water set, and a rare small necked vase that is much larger than the whimsy vases more commonly seen.

ODDS and ENDS

By John Resnik

Among Dealers and collectors of fine paintings and antiques, the word provenance is bandied about with great regularity. Seldom, however, does one hear of its use in relationship to carnival glass.

What is provenance you say? Well, Mr. Webster says very succinctly; "origin, source". In common usage however, especially in reference to art, it means history; the history of where it's been and who has owned it.

In most cases, we as carnival glass collectors are happy just to know for certain what company manufactured the piece, and a general time frame as to the date of its manufacture. Imagine the thrill of finding a piece of carnival glass, and rare at that, about which you know every detail. Such is the case with the piece in the photo.



Shown is a marigold Lattice & Grape Spittoon, made from the tumbler mold. Dimensions are 2 3/4" tall X 4 1/2" at the widest point.

This item came to me with the following verbatim written history:

"Emma Coulter sister of Samantha Smith rubbed snuff all her life. In 1918 she worked at Fenton Glass Factory at Williamstown West Virginia so one of the men knowing she had to spit made this tiny spittoon for her to use. She gave it to me (Samantha) before she died in 1970. Carnival Glass, only one of its kind made.

I was also verbally informed that Emma worked at Fenton for 6 years and that the spittoon was made as a birthday present.

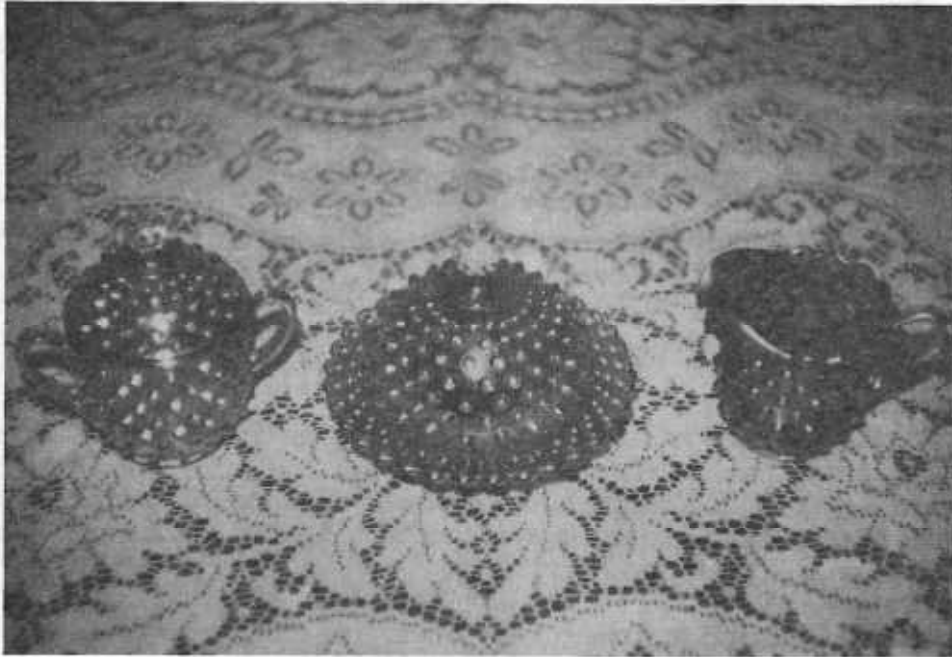
A check of the Fenton personnel records for the year 1918 verified that Emma Coulter nee Terrel did indeed work there, but for a period of six months, not six years. I've been unable to verify the birthday present portion of the story other than knowing that Emma's birthday did occur during her tenure there.

One error in the written history does occur in the final line. There are definitely at least two of these little cuties; the other residing in the collection of Byron & Grace Rinehart of West Virginia. Judging from the photo I have seen, the Rinehart's spittoon is slightly taller and less squatty than the one pictured here.

At any rate, one, two or a dozen; Pat and I consider this to be one of the highlights of our collection and we delight in the fact that we have an "almost" original owner item.



HOBNAIL AND SWIRL HOBNAIL



Both of these related Millersburg patterns are most attractive in all their shapes.

The Hobnail design is found in rare water sets, table sets, rosebowls, lady's spittoons, vase whimseys and a ultra rare jardiniere from a variant mold. Colors are primarily amethyst, marigold and green but blue does exist in the water set and table set. Besides this primary use, Hobnail is also found as an exterior pattern on the Millersburg Vintage bowls in both sizes.

The Swirl Hobnail is simply a variation of the Hobnail with a beautiful swirl added between the hobnails. In most instances, the Swirl Hobnail is a rarer pattern and is found in rosebowls, lady's spittoons and vase whimseys. Colors are amethyst, marigold and green with the latter most difficult to find.

Shown is the very beautiful and rare Hobnail table set in marigold. Very rarely are these pieces encountered together and sets are quite hard to come by.

CARNIVAL GLASS AUCTION

Saturday, January 9, 1982, 9:00 a.m., Midway Motor Lodge, I-270 at Old Dorsett Road, St. Louis, Missouri

Selling approximately 400 pieces of fine old Carnival Glass consisting of some extremely choice Millersburg Carnival plus Watersets, Punch sets, Compotes, Grape & Cable, Plates, Bowls, Rosebowls, and much more in a great variety of colors and patterns.

On Saturday morning, a huge Breakfast Buffet will be available beginning at 7 a.m. for \$5.00 per person.

The evening preceding the Carnival Glass auction, a fine group of clocks will be auctioned.

For a complete listing of the items to be sold, contact:

WOODY
Auction & Real Estate Co.
Douglass, Ks. 67039
Phone: 316-746-2694

REX LYONS AUCTION

We never even thought of going to Marion, Indiana to an auction being held there on November 13th and 14th. We had letters on Thursday before from Heaton's of Indiana and Heeleys of Ohio saying they were going. We already knew Florence and Phillip Graham were to be there. Also Mildred and Raymond Munnert from Muncie. The Hoosier club were meeting there for their monthly meeting and to attend the auction.

The day before we had gone out on a little trip of 150 miles. The weather had been so beautiful-we took a picnic and went to our New River Gorge Bridge. It's the longest steel arch bridge in the world and the second highest in the nation and visitors are always coming and going to the overlook. We spent the day leisurely going to a Mall Antiques Show and to some shops. Back home and still no thought of the auction. Even after reading the letters the urge didn't come. Up late Friday and After 10AM it occurred to us we could actually still go if we wanted to bad enough. After some division of thought we finally decided we would go. You never saw such activity-as a mad rush to get ready on such short notice. We did a record time on get away and left at 12 noon.

Weather pretty as ever and a long stretch for us to go by Dayton and on to Indiana by Richmond. We never planned to go all the way but could get close enough to go on in for auction preview Saturday morning. We found a nice motel at Richmond so stopped early for a good night's rest. (242 miles from home) we had stopped only once the whole way and for once we never took time to eat our picnic.

We were up at 5 AM getting ready for the extra 87 miles to Marion. We were well past Muncie before day light came. After breakfast in Marion then on to Auction site. It was open by then and who did we see but Tom Burns pulling into parking lot at the same time we did. He was on a buying trip in the mid west. Several cars already parked and it was almost a shock to see another West Virginia license there. We so seldom ever see anyone from West Virginia at the carnival gatherings. We were so pleased to see our Wheeling friends-the "Farmers". That was a nice surprise.

I think about 100 bidding numbers were given out and it was well attended. Prices were about normal with a pretty Chateline pitcher bringing 1200 then resold because of a slight heat check at 750. Our carnival people are getting choosy about any type defects or damages. We did get a nice blue Apple Tree tumbler is all, though a lot of items were tempting. We did enjoy the auction as we had not been to one the Lyons did in a long time.

The auction ended about 4 PM so we all went to a near by cafeteria with the Hoosier club for a good smorgasbord dinner. The Tiltons, Harnishes, McClouds, Warrens and us were invited to join the group. Maybe others were visitors too-of course Tom Burns was with us and mentioned how great his coming auction will be in February at Strongsville, Ohio. We know everyone will want to go to it-just to see the Jack Wilsons lovely Millersburg carnival. After our delicious meal ended Jerry Hunter presided over the club meeting. Her husband read a lovely poem about Thanksgiving which was so appropriate-made us all realize the daily blessings we should remember to be thoughtful for and not wait for a Thanksgiving that comes only once a year. We all did enjoy sharing the evening together and appreciate the Hoosiers for asking us to join their group. It has to be one of the nicest carnival clubs anywhere. I believe there were about 45 at the meeting with at least 6 states represented.

Francis and Rovene Heaton insisted we go home with them as they lived not far away at Warren. We had always wanted to see their lovely carnival and their farm we had heard about since the early days of carnival. It was just beautiful and we enjoyed their hospitality which can not be equalled. We were so glad we had a chance to visit these wonderful people. We left at 8AM for home. Frost thick as snow but sun soon took it away as we headed east. The weather was just great and we had another wonderful trip to add to our 1981 years travels. We think 81 has been more special than ever. It surely has gone fast though and now it's holiday time again. We are busy already on Christmas cards for the nice carnival friends we have met along the way. Since it is impossible to send to everyone we would like to-wish each one "special holidays and a good year for 1982". You are in our thoughts-until we meet again.

LYONS AUCTION-NOVEMBER 14-MARION INDIANA

M Butterfly & Tulip bowl 180
P Peacock at Urn 7 pc ice cream set 200
G Singing Bird water set 7 pc 410
B Apple Tree water set 5 pc 270
M Robin water set 4 pc 155
W N Pach covered butter 145
P Chateline water pitcher 1200
returned and resold heat check 750
M G/C candlesticks pr 120
G Corn vase 150

M Apple Tree water set 5 pc 145
B Strawberry & Dragon bowl 195
P Town Pump 350
R Persian Medallion bon bon 500
M Palm Beach water pitcher 225
B Elks Head bowl 225
P Dandelion water pitcher 275
B Roundup plate 102
Peach Wishbone & Spades bowl 100
P Isaac Bensch & Son bowl 125

Grace & Byron Rinehart
Charleston, West Virginia

Wilson Millersburg Collection Sells February 26 & 27 at Strongsville, Ohio

A Landmark carnival auction will be held on February 27, 1982 (preview night of the 26th) at the Strongsville, Ohio Holiday Inn (5 miles from the Cleveland airport).

Tom Burns and Bill Richards will auction the Millersburg collection of Jack and Liz Wilson from Chicago, Illinois.

Over the past 8 years the Wilsons have put together a collection consisting exclusively of Millersburg pieces. Included will be carnival glass, crystal and Millersburg memorabilia. In the latter category the premier item is the only known surviving stock certificate from the Millersburg Glass Company. This is the stock certificate that was photographed for Sherman Hand's and Rose Presznick's books. Also included will be a blank check from the Radium Glass Company as well as a sheet of their stationary with an accounts recievable Ledger for F. W. Woolworths on the reverse. Rare Millersburg postcards will also be included.

Among the Millersburg crystal will be many items that will surprise collectors. Included is a banquet size punch set in the Ohio Star pattern. Other Ohio Star pieces include a four piece table set, tankard pitcher and rose bowl.

Of course the carnival glass is the main attraction and there are many extremely rare and one of a kind pieces to be offered.

Water Pitchers (partial listing)

- A Multi Fruits & Flowers
- B Hobnail
- M Hobnail
- G Perfection
- M Cherry
- G Cherry
- A Cherry
- M Maryln
- G Maryln
- A Maryln

24 Rare Compotes Including

- Vaseline Acorn
- Cherry 3 colors
- Deep Grape amethyst with 1 of a kind pie crust rim and radium finish
- Fruit Basket amethyst
- Leaf & Little Flowers 3 colors
- Ohio Star marigold jelly compote
- Peacock giant compote in amethyst
- Rosalind small size in amethyst and green

- Rosilana large marigold
- Rosiland large amethyst jelly compote
- Roses & Fruits green and marigold so rare most collectors have never seen one
- Wild Flower green and amethyst

7 Very Rare Millersburg Plates

- M Peacock chop plate
- M Cherries 6"
- M Blackberry Wreath 6"
- A Peacock 6"
- G Rosalind
- G Seaweed
- M Seaweed one of a kind

Amethyst Diamonds punch bowl & base with super color only set in this color

Cleveland ash trays in marigold 2 known and amethyst----

7 pieces of rare Millersburg vaseline; 7 pieces of rare blue Millersburg, including only Rose Columns vase known in this color.

Rose Columns vases in marigold, amethyst, green and blue

Elks paperweights in green and amethyst

The formation of the Great Lakes Carnival Glass Club has been planted as a seed and has started to grow. We have held two meetings with the most recent meeting being a covered dish dinner at the home of Bob and Geneva Leonard in Monroe, Michigan. The afternoon disappeared quickly viewing the Leonard's outstanding carnival glass collection and other collectables. Eating and discussing the best way to set up a local carnival glass club. The next meeting will be held on 30 January 1982. Should anyone wish to attend, please contact me for details.

Gwen Bevill, 48528 Hawk, Selfridge A.N.G. Base, Mi 48045 Ph 313-949-4766

ON THE ENGLISH CARNIVAL SCENE

Autumn is here, bringing with it so many of the colours of carnival. The trees are decked in canopies of gold, russets, reas, browns, yellows and all shades of green. The berries hang on the trees in reds and purples and in profusion on the bushes along avenues and streets.

Back in August, I visited the old and picturesque Sussex town of Rye, noted for its timbered cottages and cobbled streets. I noted a year or more ago when I was there that several big wharfside warehouses had been converted into markets for antiques, bric-a-brac, craftwares and the like and all were doing brisk business. But it was not in the markets that I found any carnival. In fact it was in the little shops of which Rye has many. One vase in a delightful smoke colour and of a most unusual shape attracted me. One side was much higher than the other and it went up to a gracefully flared top with outstanding iridescence overall. The other vase I bought was in the ameythst "Pulled Loop" design.

Later on in August, I went to a fair at Brighton, on the Sussex Coast, and came upon a miniature blue "Curved Star" sweetmeat dish with a lovely lustre finish. In the Brighton open market, I found a marigold miniature "Carnival Holly" compote which goes with the ameythst one I had found earlier.

At a large fair much nearer home in the town of Dorking just a few miles from where I live, I discovered a marigold "Quartered Block" butterdish, complete with its lid. Not only is it a very welcome addition to my butterdish collection, but I find it's triangular shape most unusual and attractive.

It was at this fair I came upon The Button Lady who sells nothing else but buttons. She has buttons galore, buttons of every description, shape, size, colour and pattern, in metal, bronze, copper, jet, plastic, and glass. After a thorough scrutiny of all her buttons, I spotted what I had been searching for—a carnival glass one, in purple, which has an all over pattern of squares, with an iridescence of blue and green. I was certainly pleased that I had met the Button Lady that day.

Not long after that a very excited voice of a friend of mine was on the phone saying, "Hurry Angie, and get down to the local junk shop where I have seen some carnival". As I thanked her I felt pleased to think that one of my carnival spies was doing such a good job. Of course I lost no time in going down to the local shop she mentioned and there I found a marigold "Eastern

Star" compote with the "Embossed Scroll" pattern in the inside.

In the bric-abrac market almost next door, I picked up four attractive small fruit bowls, in a pattern similar to the "Pillar and Flute". These have slightly smaller panels with a smooth interior and I have an idea they are English made judging by the finish and colour. They were a bargain at £1.25p for the four.

At the end of September I went along to the huge open air fair at Ardingly in mid-Sussex. There were 300 outdoor stalls, plus almost as many people selling from the back of their cars. All week I had prayed that it would keep fine for this big event and the good Lord answered my prayers. The day dawned bright and clear and remained that way all day. I was able to return with three nice pieces, one of which was a "Wreath of Roses" whimsey rose bowl in marigold, another a very small marigold bowl, which had the "Lustre and Clear" pattern on the inside and the words "British Make" impressed in the inside. But the real find of the day, was a peach opalescent "Peacock & Grape" footed bowl with unusual aqua base. Again it was thanks to two friends spying it earlier and reporting it to me that I was able to get it.

During September while my folks were away in Devon at an Antiques Seminar, they came upon a most exciting carnival find, which they brought back as a really delightful present for me. As I unwrapped the paper, a large white carnival bowl emerged on the base of which is the magic "N" mark. I was thrilled to discover it was a "Northwood's Peach" bowl in rare white with splendid iridescence, and about which Sherman Hand in his Encyclopedia, says: "One of the oldest patterns in carnival, the Peach appeared in 1906 in white and later in clear and green."

If ever you come to England may I recommend you to visit the old Roman city of Chichester, down on the Sussex Coast near to Portsmouth. It is a delight to visit because all the streets in the city centre have been closed to traffic so that we antiques hunters and all shoppers, can walk around with ease and comfort and not have to worry about crossing busy roads and watching out for traffic. Apart from that, it is a lovely city with a fine old Cathedral and many other delightful old buildings, plus a lovely new theatre.

After much searching in the town, in two markets and all the antiques shops I found in the very last shop I called at, an ameythst "Captive Rose" bowl. This is a piece for which I have been searching for sometime, which proves that if one looks long enough it will surely turn up. As a friend said to

me recently, " it seems as if these pieces wait just for you to come along".

May I add that my book about Carnival Glass is selling well and has brought to light many U.K collectors, of which close on 100 have expressed an interest in a U. K. Carnival Club which will, I hope, be launched very soon. Overseas collectors will be most welcome to join too, so please write and say if you'd like me to add your name to the list of prospective members.

Happy hunting folk, and hope you find some lovely carnival treasurers.
Regards from your U.K. Carnival friend,

Angela J. Hallam
Surrey, England

WELCOME NEW MEMBERS

M/M Charles Vaughn, Baldwin City, Ks
M/M Jesse Justis, Clinton, Mo
M/M Charles Drake, Smithville, Tx
Clifford Decker, Whitney Point, N. Y.
M/M Richard Witten, Oklahoma City, Ok
M/M Randy Palmer, Lee's Summit, Mo
M/M John Waters, Shawnee, Ks
M/M Duane Sweet, Washington, N. J.
M/M Elmer Ridings, Lee's Summit, Mo
M/M Michael LeBlanc, Smithfield, R. I.
M/M Paul Thurston, Columbus, Ind
M/M Lawrence Scott, Coffeyville, Ks
Miss Eileen Child, Victoria, B. C. Canada
Elizabeth Edmanson, Springfield, Mo
M/M Richard Lunsford, Ventura, Ca
M/M Howard Manderville, Pasco, Wa
M/M Joe Reidel, Wichita, Ks
M/M Delbert Ward Jr., Marietta, Oh

To each and everyone from all of the clubs both in USA and Canada, I wish to thank all who attended our auction in Strongsville, Ohio and helped Tom and Bill to make it a success. I found what I lost in some of the pieces I paid to much for, I came out on others so am satisfied with the sale which I know I could not have come out on in Canada. Thanks again.

Albert & Iris Mels
Canada

I must congratulate you on your good work as Bulletin Secretary. You are doing a great job. I am really looking forward to the setting up and running of the U. K. Carnival Club. I know it will be hard and demanding work but I will just love it.

Angela Hallam
Surrey, England

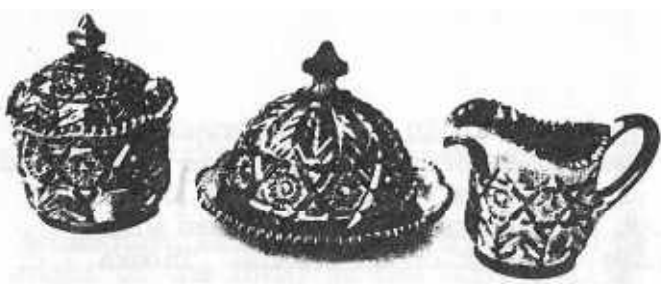
"Christmas Time Again", the time of the year when the spirit of Love and Friendship abounds. A time of the year to be thankful we live in a country that we have the freedom and friends to share our love for carnival glass. As it is time to decorate the tree again, it brings back memories of our display at the H.O.A.C.G.A. convention, "Carnival, Gifts of Christmas Past". We wish to extend a special "Thank You" and wishes for a "Merry Christmas" for the many friends who shared the spirit of Christmas with us in Kansas City.

Happy Holidays,

Jim and Pat Vaughan
Hindsville, Ark

P.S.--I still believe in Santa
Wish he would bring a Christmas compote in marigold.

Pat



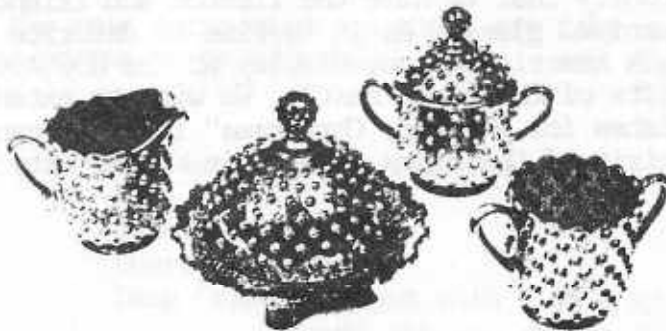
21. INVERTED FEATHER

Table Sets

FILLERS

The table sets fillers for your notebooks are available now. The fillers are free to all members but we need a dollar (\$1.00) for postage and packing. Send your dollar to Lucile Britt, 3048 Tamarak Drive, Manhattan, Kansas 66502.

Your notebook now should have Punch Sets, Mugs and Table Sets to be up to date. If you are short the mug fillers send a dollar to Lucile Britt also.



20. HOBNAIL

POLICY FOR ADVERTISING IN H.O.A.C.G.A. BULLETIN

We repeat the guide lines set up in years past for the benefit of the new members and as a reminder to all. Member families may advertise ten (10) FOR SALE and ten (10) WANT ads each month free of charge.

All advertisements, announcements, letters or any other item to be printed, must be received by the Bulletin Secretary by the 1st of the month to insure being published the month received.

1. In the absence of any chips or cracks being noted the piece will be considered perfect.
2. A 5 day return privilege at buyer's expense providing it is not as advertised.
3. All postage and insurance extra.
4. All for sale items must be priced - no bid items will be published.
5. The H.O.A.C.G.A. and paper do not accept any responsibility for items bought or sold thru this paper.
6. Marked Northwood pieces - please use (N).
7. Only OLD CARNIVAL GLASS items will be published.- The only new Carnival items accepted are the H.O.A.C.G.A. souvenir items.

For accuracy of description, the following is recommended:

- | | |
|-----------------------|----------------------|
| A - Amethyst | PM - Pastel Marigold |
| P - Purple | R - Red |
| G - Green | C - Clear |
| B - Blue | IG - Ice Green |
| CB - Cobalt Blue | IB - Ice Blue |
| M - Marigold | AMB - Amber |
| PO - Peach Opalescent | S - Smoky |
| AO - Aqua Opalescent | W - White |

- | | |
|----------------------------|------------------------------|
| EI - Excellent Iridescence | L - before color means light |
| GI - Good Iridescence | D - before color means dark |

EXAMPLES: LM EI Brooklyn Bridge bowl \$250.00
 DP EI Good Luck bowl (N) small
 base chip 75.00

It would be appreciated if you will please use these codes suggested, it will be less confusing to everyone and also be helpful in the typing and set up of the bulletin.

FOR SALE

George Loescher, 2420 Park, Beloit, Wi 53511 PH 608-362-3104

A EI	Daisy & Plume ftd rose bowl leg nicks	60
M EI	Daisy & Plume ftd rose bowl	65
B EI	G/C berry bowl N 6"	35
W EI	Corn vase	150
M EI	Persian Medallion rose bowl round top	38
B GI	Persian Medallion rose bowl round top	50
A EI	Persian Medallion rose bowl round top	60
A EI	Vintage epergne lilly has base chips	50
A EI	Seacoast flat flake back side	150
AO EI	Dandelion mug 2 base rim flakes	175

Norma Wagner, Box 52, Bagley, Ia 50026 PH 515-427-5749

G EI	Hobstar & Feather giant rosebowl, damage but not all that bad. sell as is	285
------	---	-----

John Resnik, 4290 Jackson Ave., Culver City, Ca 90230

B GI	Enameled Cherries 7 pc water set	150
M EI	Peacock & Urn com-ote goblet shape	60
B EI	Peacock & Urn compote goblet shape	70
W EI	Peacock & Urn compote ruffled	95
M GI	Ranger milk pitcher	35
A EI	Louisa rose bowl	65
G EI	Inverted Strawberry 7" bowl signed near cut	45
M EI	G/C dresser tray	150
P EI	G/C orange bowl	175
A EI	Butterfly & Tulip large square ftd bowl rare	975

Chester Cripe, 66211 Conrad Road, Edwardsburg, Mi 49112 PH 616-663-8289

P EI	Heavy Grape chop plate	160
P EI	Millersburg Cherry butter dish	125
B GI	Horses Head 7" ruffled bowl	65
G GI	Flute toothpick very minor wear	25

Paul Gamache, Box 394 Barton Rd, Apalachin, N. Y. 13732 PH 607-625-4485

M EI	Holly & Berry bowl	35
B EI	Holly & Berry bowl	45
W EI	Holly & Berry bowl	65
P EI	G/C punch cup (N)	25
P EI	Memphis punch cup	35
P EI	S Repeat punch cup	35
P EI	Star of David bowl	50
M EI	Wide Panel lampshade 2 ea	22.50
B EI	Fine Rib vase red in base	40
M EI	Octet ftd bowl	45

Bill Edwards, 423 Main St., Rushville, Ind 46173 PH 317-938-4221 after 5pm

M EI	Sunflower & Diamond vase	70
M EI	Fanciful 8 1/2 bowl	32
M EI	Pineapple and Bows bowl 7"	45
M EI	Garden Path vt bowl 8 1/2	35
B GI	Butterfly & Fern tumbler silvery	30
Vaseline EI	Lenon tray stennaed	35
P GI	Victorian bowl some wear but good irid	125

A. C. Dickey, 144 Chandler St., Vacaville, Ca 95688 PH 707-448-9366

M	Stork & Rushes beaded 6 ea	22
---	----------------------------	----

B	Stork & Rushes beaded 6 ea tumbler	30
M	Lattice & Daisy 6 ea tumbler	20
M	Field Flower tumbler	20
G	Luster Rose tumbler	35
B	Ten Mms 7 ea tumbler	60
M	Waterlily & Cattails 6 ea tumbler	20

Mary Herren, 520 S. Berry, Morganfield, Ky 42437 PH 502-389-3121 evenings

B	EI	Rose Show plate 9 1/2" two tiny base nicks	160
M	EI	Butterflies bon bon	25
M	EI	Millersburg Cherries 6" dish	15
M	EI	Star & File 6" bowl	10
M	EI	Maple Leaf tumbler	15
M	EI	Imperial Grape decanter no stopper internal crack	10

Ruth Argyros, Box 514, Palm Harbor, Fl 33563 Ph 813-784-3825

M	EI	Brooklyn Bridge bowl	175
P	EI	Peacock at Fountain orange bowl	175
B	EI	Fenton Thistle banana boat	135
Olive	EI	Colonial candlesticks pr	60
M	EI	Lustre & Clear celery dish 2 ea	18

Lorothy Campo, 5209 Crest Acres Lane, Yakima, Wa 98908 Ph 509-966-7949

A	EI	Peacock at Fountain creamer N	80
A	EI	Imperial Grape wine decanter orig stopper	175
B	EI	Stag & holly large ftd bowl chip underneath base	100
M	EI	Star & File wine glass	37.50
M	EI	Split Diamond creamer	25
M	EI	Fihe Cut Flower compote	35

Gil Corriveau, Box 5, Sturbridge, Ma 01566 PH 617-347-3304 days
617-347-9930 nights

G	EI	Singing Birds tumblers set 6	180
P	EI	Grape & Cable water pitcher N	200
M	EI	Acorn Burr butter dish N	125
B	EI	La-tice & Grape 7 pc water set tankard	450
G	EI	Singing Biras 7 pc water set	475
AO	EI	Seales bowl 8 1/2"	200
P	EI	Acorn Burr water set 7 pc N	675
P	EI	Oriental Poppy 7 pc water set N	700
P	EI	Acorn Burr punch set 8 pc	650
P	EI	Grape & Cable water set 7 pc N	300

Ralph Simendinger, 1002 Maycliffe, Pl, Cincinnati, Oh 45230 PH 513-231-5381

G	EI	Iris compote Fenton	45
P	EI	Imperial Grape water carafe	125
G	EI	Imperial Grape wine set	250
P	EI	Singing Bird mug (N)	65
B	EI	holly Berry plate 10"	90
AQ	EI	Peacock On Fence scalloped bowl	295
P	EI	Pansy Spray relish bowl	40
G	EI	Strawberry plate (N)	90
B	EI	Three Fruit plate	100
P	EI	Nautilus unlettered	175

Bernard Taps, % Pierces, 1636 Nevada Ave, Loraine, Oh 44052 PH 216-288-0611

PO	EI	Stippled Flower 8" ruffled bowl	54
B	EI	Panther large berry bowl	160
B	EI	Persian Medallion 5" berry bowl	25
A	EI	Grape Delight rose bowl 6 fta sm heat ck in bottom	60
W	EI	Fine Cut & Roses bon bon N Fancy Int	206
A	EI	G/C covered butter (N)	130
A	EI	G/C creamer (N)	200

Don Staley, 1200 Milam St., Suite 3124, Houston, Tx 77002 PH 713-358-0412
after 5 PM

G EI	Winomill tumbler	45
A EI	Winomill tumbler	50
M EI	Star & File tumbler	45
M EI	Orange Tree Orchard tumbler	40
M EI	Maple Leaf tumbler	30
P EI	Maple Leaf tumbler	45
CL EI	Lustre Rose tumbler	75
M EI	Hobstar Band tumbler	55
G EI	Diamond Tumbler	50
A EI	Checkerboard tumbler	375

Louis Bradford, Rt 2, West Paducah, Ky 42086 PH 502-488-3005

P EI	G/C N large salad bowl	250
R EI	Thin Rib vase 9"	150
R EI	G/C collar base bowl	450
R GI	Goblet 3 1/4 x 5 1/4	200
R EI	Dragon & Lotus bowl	500
M EI	Butterfly & Berry 7 pc berry set	250
M GI	Floral & Grape water set 7 pc	185
B EI	Floral & Grape water set 4 pc	250
M EI	Kittens saucer	85
P EI	Broken Arches punch bowl & base sm crack	150

Paul Jankauer, 5 Court of Overlook Bluff, Northbrook, Ill 60062
PH 312-272-4440

M EI	Kittens cup and saucer	150
P EI	Good Luck plate	165
PM EI	Good Luck round ruffled bowl	75
G EI	Scroll Embossed plate 9"	59
W EI	Holly plate	85
W EI	Ultara rare Palm Beach tumbler with silvered top	250
R EI	Orange Tree shaving mug	425
IB EI	Peacock at Um ice cream bowl (N)	325

30

IB EI	Peacock at Um small ice creams have 5 (N) ea	65
P EI	Wreath of Roses 2 handled bon bon	49

Dick Hatscher, Box 261, Walnut Hill Rd., Bethel, Ct PH 203-743-1466

PO EI	honey Comb rose bowl	185
PO EI	Caroline tri cornered bowl	38
PO EI	Question Mark crimped flat top compote	48
PO EI	holly Whirl 1 handled ruffled sauce	45
PO LI	Soutache bowl	55
PO EI	Stippled flower bowl	28
PO EI	Single Flower bowl	30
PO LI	Raindrops bowl	30
PO EI	Apple Blossoms Twig ruffled plate point chipped	40
PO EI	Cherries 3 ftd bowl	42

Sterling Butz, 221 N. Adams St., Allentown, Pa 18104

G EI	Butterfly & Fern water set 5 pc	475
M EI	heart & Feather water pitcher	350
M EI	Dandelion water pitcher	300
M EI	Greek Key water pitcher	400
A EI	Basket Weave basket 2 handles	50
A EI	Fenton Thistle banana boat	145
B EI	Fenton Thistle banana boat	145

Helen Nadeau, 18 Thomas Olney Common, Providence, R. I. 02904 PH 401-521-4581
after 5 PM

P EI	Maple Leaf ice cream master bowl	95
P EI	S Repeat punch cups 3 ea	35
P EI	Fishermans mug	95
P EI	Vintage epergne	135
P EI	N/G hat pin holder	155
G EI	Fenton Flowers 6 pc berry set	200
G EI	Trout & Fly bowl	335
M EI	Sunflower ftd bowl	25

31

Patricia Craver, Box 8015, Allandale, Fl 32023 PH 904-788-5315

B EI	Floral & Grape 5 pc water set	300
M EI	Beaded Basketweave baskets 2 ea	30
B EI	Painted Cherries 7 pc water set	140
M EI	Imperial Grape 10" bowl	18
G EI	Coin Dot bowl 8"	18
A EI	Pineapple 8" bowl	35
MG GI	Floral & Optic ftd bowl rough feet	75
M EI	Optic & Buttons 12" handled bowl	18
M GI	Beaded Cable candy dish	25
PO GI	Coin Spot compote	45

Lamar Sharp, 719 W Brubaker Valley Rd, Lititz, Pa 17543 PH 717-626-5521

M EI	Acom bowl 7 3/4	28
M EI	Vintage sandwich tray	35
S EI	Vintage sandwich tray	65
B EI	Butterfly & Berry bottom for butter dish	90
M EI	Graceful vases pair	65
M EI	Acom Burrs (N) base for punch bowl	150
A EI	Blossom Tine (N) compote	65
A EI	Daisy & Plume (N) compote	45
M EI	Windflower 8 1/2 low bowl	22
A EI	Millersburg Cherries 6 1/2 low bowl-	60

Jerry Hulsey, 104 23rd St S. W., Fort Payne, Al 35967 Ph 205-845-2273

M EI	Heavy Iris tankard pitcher	325
M EI	Springtime pitcher sm bruise on bottom	315
M EI	Vineyard pitcher	95
M EI	Butterfly & Berry water set	250
M EI	Grape & Cable water set	315
P EI	Grape & Cable water set	385
P EI	Maple Leaf water set	410
B EI	Grape & Gothic Arches water set 5 tumblers	315
P EI	Grape & Cable 9" plate	80
A EI	Wishbone 8 1/2" bowl 3 ftd	75

32

Edward L. Henderson, 1111 N College, Stuttgart, Ark 72160 PH 501-673-8757

M EI	Panther bowl 3" crack	60
M EI	Jelly compote Diamond sm chip	17.50
M EI	Rib jelly compote clear stem	15
M EI	Star & file compote	75
M EI	Daisy & Fern nappy	25
M EI	Imperial Grape plates sm chip on one 2 ea	35
A EI	Persian Meallion relish sauce dishes 4 ea	35
M EI	Star of David relish	25
M EI	Windmill oval shaped relish	55
M EI	Orante Tree pedestal sauce dish	25

Omer Sweeney, 28 Esmond St, Esmond, R. I. 02917 PH 401-231-4108

PO	Northwood Fan occasional bowl	75
P	Acom Burr 7 pc punch set	675
M	Toronado vase	160
M	Diving Dolphins bowl	165
P	Leaf & Beads w/pattern interior rose bowl	75
G	Greek Key tumbler N	105
M	G/C humidor stippled N	285
M	G/C cookie jar damage where lid sits N	100
P	Fine Cut & Roses rose bowl	65
M	G/C tumblers N 3 ea	25

Dick Wetherbee, 847 Stafford St, Rochele, Ma 01542 PH 617-892-4420 after 6PM

M EI	Question Marks 2 handled bon bon	12
G EI	Strawberry w/basketweave 8 1/2 bowl N	45
M EI	Flute stemmed sherbets N 4 ea	8
AO EI	Dravery rosebowl no harm crack super color	80
M EI	Lamp Globe handpainted shade 6x4	32
G EI	Captive Rose 9 1/2 plate	125
P EI	Raspberry milk pitcher sm check at handle N	80
M EI	Leaf & Beads rosebowl nfgs check	15
P EI	heavy Grape lg berry bowl	62
M EI	Panther 5 1/2 ball ftd sauce	30

33

Jane LeBlanc, 1 Circle Rd, Smithfield, R. I. 02917 PH 401-231-3759 after 5PM

P	Good Luck bowl	130
P	G/C N big fruit bowl	235
P	Diamond Lace water pitcher	200
M	Hobstar & Feather punch cups	20
M	G/C banana boat	150
M	Fenton G/C fruit bowl Persian Interior	95
M	G/C N 8 pc punch set	320
M	Windmill & Mums 10 1/2 ftd bowl	65
M	Horse Medallion ftd jack in pulpit bowl	90
M	Grape Arbor water set 7 pc	410

Mary Kesterson, 3020 Mesa Rd, Willow Park, Tx 76086 PH 817-441-8410

W	EI Grape Delight rose bowl 6 ftd	95
MG	EI Daisy Wreath bowl	75
M	EI Dandelion mug	135
M	EI Mikado compote Fenton	185
M	EI Palm Beach tumbler 2 ea	65
P	EI Rose Show bowl sm nick on rim	125
G	EI Thistle compote	60
M	EI Kittens cup & saucer	250
M	EI Stag & Holly ft 11" bowl	95
PO	Ski Star banana bowl	85

M. H. Bevill, 48528 Hawk, Selfridge A.N.G. Base, Mi 48045 PH 313-949-4766

P	EI Peacock at Fountain tumbler	65
M	EI Stag & Holly 11" bowl	75
B	EI Floral & Grape tumbler	35
G	EI G/C stippled plate	120
A	EI Star of David & Bows 8" bowl	65
B	EI Enamel Painted Cherries tumbler	17.50
B	EI Ten Mums tumbler	65
M	EI Leaf Tiers creamer scarce	45
M	EI Signed Heisey H in Diamond 6" plate	25
P	EI G/C ice cream sherbert	30

34

B	EI Dragon & Lotus bowl	35
P	EI Fruits & Flowers N bon bon ftd bowl	45

Eva Backer, 12 Sherwood Rd, West Hartford, Ct 06117 PH 203-232-1027

G	EI Diamond Lace Berry bowl	20
M	GI Butterfly & Berry butter dish top	25
PO	EI Caroline bowl	45
A	EI Leaf Ray nappy ext pattern	35
W	EI Brocaded Palms cake plate	50
M	EI Poinsettia milk pitcher edwards early years pg 76	80
A	EI G/C tumbler (N)	25
A	EI G/C covered sugar flake and roughness on bottom. (N)	70
A	G/C punch base regular (N)	25
G	EI Millersburg Rays & Ribbon bowl Hobstar Ext	50

Paul Berube, 11 Doris Ave., Tiverton, R. I. 02878 PH 401-625-5303

M	EI Vintage punch cups 4 ea	9
M	EI G/C stippled punch cup	12
M	EI Octagon Variient tumblers 4 ea	14
B	EI Good Luck bowl	90
M	EI Stork & Rushes beaded tumbler	12
G	EI Lustre Flute creamer N	15
A	EI Stork & Rushes butter base rare	60
M	EI Star & File water pitcher	150
M	EI Star Medallion punch cups	8
M	EI Diamond Block 4 3/4" shade	25

35

WANTS

Mrs Gwen Bruce, 1047 Chamberlain St., Victoria, B. C. Canada V8S4C1
PH 604-598-3198

Tumblers and vases in all patterns and colors

Bill Edwards, 423 N Main St., Rushville, Ind 46173

Millersburg crystal pieces in Diamonds, Hobstar and Feather, and Ohio Star

Iris Mels, Vittoria Ontario, Canada NOE1W0 pH 519-426-2176

White carnival glass vase the largest made please

Dorothy Campo, 5209 Crest Acres Lane, Yakima, Wa 98908 PH 509-966-7949

AQ Estate sugar bowl
b Butterfly & Berry creamer and or sugar
P Springtime tumblers

Patricia Craver, Box 8015, Allendale, Fl 32023 PH 904-788-5315

W Peacock at Fountain punch base
W Orange Tree punch base

Louis Bradford, Rt 2, West Paducah, Ky 42086 PH 502-488-3005

P Beaded Shell water pitcher
R Autumn Acorns collar base bowl 8"
R Fenton's Flowers rose bowl ftd
R Panther ftd bowl 5" 5 1/2"

36

Don Staley, 1200 Milam St., Suite 3124, Houston, Tx 77002 Ph 713-358-0412
after 5 PM

B Panelled Dandelion tankard
B Orange Tree ftd tumblers
M Imperial Grape tumblers need 15
M Imperial Grape wines need 10
P G/C cracker jar
P G/C candlesticks need 2
PO Fan sauce boat
G Lily for Wishbone epergne
M Butterfly & Berry spooner, sugar, creamer
M Octagon wines

Dick hatscher, Box 261, Walnut Hill Rd, Bethel, Ct 06801 PH 203-743-1466

IB Hearts & Flowers compote
Any Peach Opal
Carnival Glass on milk glass

Eva Backer, 12 Sherwood Rd, West Hartford, Ct 06117 PH 203-232-1027

Star of David & Bows (N) marigold or green
S Imperial Star of David
Octogen wine decanter stopper
Octogen stemmed wines

Mary Kesterson, 3020 Mesa Rd, Willow Park, Tx 76086 PH 817-441-8410

AO Leaf & Beads rose bowl
AO Drapery rose bowl
B Mikado compote
C Shriners champagne glasses
CB Round Up bowl
IG Peacocks on Fence (N)
M Bushel basket round
W Georgia Belle card tray

37

IB Fine Cut & Roses rose bowl
IB Embroidered Mums bowl 9"

Omer Sweeney, 28 Esmond St., Esmond R. I. 02917 PH 401-231-4108

P Diamond Lace tumblers
P Acorn Burr butter top
M Springtime tumblers 6
M Acorn Burr tumblers 6
M Fentonia water pitcher
W Dahlia sugar cover
M N Grape sugar bottom
P Acorn Burrs punch cup N

Raymond Michael Jr., Rt 2 Box 690, Irvington, Ala 36544 PH 205-957-2481

M Imperial Grape tumbler 4
A Stork & Rushes tumbler 4
A Stork & Rushes water pitcher

M. H. Bevill, 48528 Hawk, Selfridge A.N.G. Base, Mi 48045 PH 313-949-4766

A Butterfly & Berry vase, covered sugar, butterdish, water pitcher
G Butterfly & Berry creamer, covered sugar & butterdish
R Butterfly & Berry vase
B Butterfly & Berry creamer & water pitcher
W Butterfly & Berry small berry bowl
AQ Any Panther pieces
A Sailboat wines, goblets & plate
PO Hobstar & Fruit pieces
V Fenton pieces
VO Fenton pieces
