

H. O. A. C. G. A.
DONALD E. KIME
BULLETIN SECRETARY
1202 W. 4th ST.
HAYSVILLE, KANSAS 67060

1982

January 1982
S M T W T F S
3 4 5 6 7 8 9
10 11 12 13 14 15 16
17 18 19 20 21 22 23
24 25 26 27 28 29 30
31

Wishing you



FIRST CLASS



Heart of America
Carnival Glass Association, INC.

MEMBERSHIP JUNE TO JUNE
\$10.00 PER COUPLE OR SINGLE

PUBLISHED 15th OF
EACH MONTH

PRESIDENT:

GEORGE O. MCGREW JR.
6800 WOODWARD
OVERLAND PARK, KANSAS 66204
913-262-8822

VICE PRESIDENT:

GEORGE BOLLES
5204 CATALINA
SHAWNEE MISSION, KANSAS 66205
913-432-5438

TREASURER:

ELIZABETH BOLLES
5204 CATALINA
SHAWNEE MISSION, KANSAS 66205
913-432-5438

SECRETARY:

LUCILE BRITT
3048 TAMARAK DRIVE
MANHATTAN, KANSAS 66502
913-539-1933

BULLETIN SECRETARY:

DONALD E. KIME
1202 W 4th St.
HAYSVILLE, KANSAS 67060
316-524-3123

FLASH

FLASH

1982 CONVENTION

OUR 10TH ANNIVERSARY

H.O.A.C.G.A. is delighted to announce that Mr. Frank Fenton will return to Kansas City to meet and answer questions about Fenton Glass and how to make Carnival Glass. Make your reservations now. Mr. Fenton will have a program on Thursday evening, April 22, 1982. This is a must for all carnival glass collectors.

On Friday evening at the banquet, Mr. Bill Heacock, noted for his research on carnival glass, will be our guest speaker. Where else could you get a "pair" of professionals on carnival glass at any convention, We are very proud to present this to our members. Good Luck and we will see you in Kansas city.

Janet Zahn
Convention Chairperson

FLASH

FROM COOLEY MILLER - CHAIRMAN OF THE 1982 SOUVENIR

First of all, I just received word that Mr. Frank Fenton will return to Kansas City to our 10th annual carnival glass convention. I have been working with Mr. Fenton on the making of our 1982 CORN VASE IN ICE BLUE CARNIVAL. There are many shades in ICE BLUE, however we feel that we picked the shade of blue close to the old original. Mr. Fenton has spent a lot of his time to make our souvenir one of the best and one to be proud of. The Fenton Art Glass Company has made seven of the ten souvenirs. This year The Fenton trade mark will be on the base. The 1982 corn vase is a reproduction of the old Northwood corn vase. This was made in red carnival in 1978 for H.O.A.C.G.A. Today an ice blue corn vase would cost around \$1000.00. As a member you can buy our souvenir for \$40.00. What would an aqua opal, peach opal or blue opal sell for today? You might be able to see one and maybe buy one at our convention, April 22-23-24-25 of 1982. We will be full of surprises.

Cooley Miller
Souvenir Chairman

ATTENTION CLUB SECRETARIES

The bulletin is in need of your local club news and activities. We need to hear from you to let everyone know you exist and we are all interested in hearing of your club activities and how your clubs are growing. It is thru the effort of the small clubs that the larger ones come about. Remember they too at their beginning were small and little did they know how large they would someday become. We all get ideas from one another and that is what it is all about. Let us hear from you about your members finds and collecting.

JUST A REMINDER

I have received several phone calls and letters regarding why an ad or want list did not make it in the bulletin. It is very simple, they did not reach me in time to get them in. I must have your articles by the first of each month. I send the material to the printer on the 1st of each month in order for you to receive your bulletins on the 15th of the month. You can not send your article to me on the 30th, 31st or 1st and expect them to get to me in time. The post office is not nearly that efficient unfortunately. Also it will save several days if you will mail them directly to me. Your cooperation will be most helpful and assure that the material you send will get in the bulletin when you want it to.

Word has been received that Marcie Osbon passed away. We extend our sympathy to Ken and family. Ken is President of the Pacific Carnival Glass Club. Our thoughts are with you in this time of sorrow.

1982 SOUVENIR

In the back of your bulletin this month you will find an order blank for you to order the 1982 H.O.A.C.G.A. souvenir. We have already received several orders for the beautiful ICE BLUE CORN VASE for this years souvenir. As you know it will be made by the Fenton Glass Company. A limit of two per couple or single membership will be allowed. The order blank is in the back of your bulletin and can be torn off without damaging the rest of your bulletin. The cost this year will be \$40.00 per corn vase and if you desire them mailed to you please include \$3.00 each for postage. Those that are not picked up at the convention will be mailed sometime immediately following the convention and please allow 3 to 4 weeks delivery on orders received after the convention.

FACTORY DELAY

Regarding the vaseline mugs. We are frequently in touch with Mosser Glass Company on this matter but their seems to be a delay at the factory. They will be mailed as soon as they are received so please bear with us

a little longer on this matter as we are trying to get the problem taken care of as quickly as possible.

Some surprises will be coming in the next issues of the bulletin from across the ocean. Some new information has been found that was thought to have been destroyed. We will be having the chance to share this information in future bulletins. I think some mysteries will be solved in the upcoming articles. I am very excited about this new information that has surfaced and think you will be equally so.

Editor

ATTENTION MEMBERS

The new directory goes to press around February 1, 1982. If any of you do not want your name in the directory please let me know at once. If I do not hear from you, I assume you do not care so I will put your name in the directory.

Send your desires to Lucile Britt, 3223 US 98 N, Lakeland, Florida 33805.

Please remember that we do still have some of the 1981 souvenir candle lamps available. They are beautiful reproductions of the old Northwood candle lamps with the H.O.A.C.G.A. logo on them. They are in red and certainly should be something for you to have.

**HAPPY
NEW YEAR**

4

-WISHBONE WISHES-

From childhood days we were told the wish bone of the Sunday chicken sometimes would bring a wish. We never missed a time to get that special bone to pull on to see who got the shortest piece meant their wishes were granted but we never stopped trying. For years I have saved a variety of wishbones, unbroken from turkeys, chickens and those cute little comish hens. I doubt their good luck power but maybe they did finally pay off. Anyway something good happened.

We like to call it our Christmas gift since it came during the holiday season. We heard of a "Wishbone" bowl in the hard to get color of aqua opalescent. We have learned to not get too excited about what we hear and wait to see what it turns out to be. -sometimes is an entirely different thing. This was a lucky wishbone after all and we keep looking at it often to convince ourselves it's really ours. Every year we sort of hope old Santa will give us something special in carnival which he has too. One year the carnival Butterflies flew close enough to catch. We loved that gift too. It's safe to say we will not forget our "Wishbone" Christmas. We know it's not the only one as Donald Kine and Roland Kuhn showed a fabulous display of "Wishbones" in every color, shape and size at H.O.A.C.G.A. convention last April. They had a beautiful aqua opal Wishbone with their lovely carnival. They won an award too, which was well deserved.

One can almost imagine back when some mold maker was considering a new pattern he remembered about wishbone wishes and said "Now that one will bring us good luck". It does have a fascinating name all right and the pattern is quite interesting to many. Our faith in the wishbone power is at its peak-but we are willing to share the gift thanks to Santa Clause since it did come to us at the most special time of year-Christmas-hope everyone else was lucky too. Our best wishes to all the wonderful carnival friends for a wonderful New Year in 1982.

Grace & Byron Rinehart
Charleston, W. Va.

5

EDUCATIONAL TUMBLER SERIES



SPRINGTIME - - A BEAUTY ANY TIME

The "Springtime" pattern is a popular favorite with a good many carnival glass collectors. It has always been one of our favorites, too. Springtime is outstanding in workmanship, detail and design. Butterflies add to the all over beauty of this fine tumbler. These butterflies, added to the pretty flower arrangement, give the pattern a very realistic design.

"Springtime" is a Northwood pattern and nearly all pieces will carry the famous "N" in a circle. The lower part of the tumbler carries the basketweave, which is quite similar to that used on the bottom part of Northwood's Raspberry tumblers. Both the water pitcher and the tumblers are shaped like those of the more common Singing Birds pattern.

"Springtime" tumblers in purple are really quite hard to find. It might be just a little easier to find one in green, with marigold being the most common color. Springtime tumblers are much harder to find than are such Northwood tumblers as Singing Birds, Dandelion, Oriental Poppy, Grape & Cable, Peacock at the Fountain and Raspberry. Besides the water set, the "Springtime" pattern was also made in berry sets and table sets. The table set in this pattern is truly outstanding. For beauty and shape the "Springtime" butterdish, with its rather tall painted top, is a great favorite and will add charm to any carnival glass collection.

This very pretty Northwood tumbler is usually included in most of the advanced tumbler collections. Most tumbler collectors will try to find one in each of the different colors. If you are just starting to collect, you might have to search for awhile before you find one. It will be well worth your time spent looking for one however, and a tumbler in marigold is just as pretty as one in the oak colors.



SPRINGTIME WATER SET

Note that the "Springtime" pitcher and tumblers, as mentioned earlier, are made in the same shape as the Singing Birds water set. You will find the "Springtime" set to be much harder to find, however.

This article, on the beautiful "Springtime" pattern, is No. 48 in our series on old carnival glass tumblers. Next month we will have a surprise for you and discuss a tumbler that most of you haven't ever seen. The pattern was made by the old Imperial Glass Company of Bellair, Ohio. I know of only two of these tumblers and have actually held both of them in my hands. A number of water pitchers of this pattern have been

observed by this writer, but I have never seen another tumbler. The tumbler has never been pictured in any of the carnival glass books. Can you guess the name of the pattern? The answer, along with a complete discussion and photograph, will be in next months H.O.A.C.G.A. bulletin.

John & Lucile Britt

CONVENTION DATES

April 22-23-24-25

HEART OF AMERICA CARNIVAL GLASS ASSOCIATION, Holiday Inn, 7240 West 63rd St., Overland Park, Kansas 66222

June 18-19

Lincoln-Land Carnival Glass Club, Holiday Inn/West, 201 North Mayfair Road, Milwaukee, Wisconsin

June 24-25-26-27

Northern California Carnival Glass Club, Dunfey Hotel, 1770 South Amphlett Blvd., San Mateo, California

July 8-9-10

International Carnival Glass Club, Midway Motor Lodge, 300 South Main, Elkhart, Indiana

July 29-30-31

American Carnival Glass Club, Imperial House Motel South, Dayton, Ohio 5 miles South of Dayton on I-75



PICTORIAL PATTERNS PARADE

WHAT-----NO BANDS



A BANDLESS FLORAL & GRAPE VARIANT PITCHER

No sooner had the ink dried good on our "Floral & Grape----Floral & Grape Variant" story than this snapshot was sent to us, showing a water pitcher having no bands at all. Note that the pitcher is almost an exact duplicate of the "Floral & Grape Variant" water pitcher that is shown on page 10 of last months H.O.A.C.G.A. bulletin, except that this one has no bands whatsoever. Since the "Floral & Grape Variant" pattern, it would indicate that this pitcher was also made by Fenton. It is a Fenton pitcher, I still have not heard of a Dugan-Diamond "Floral & Grape" pitcher or tumbler in green. Do any of you have one in green?

I would suspect that Fenton ran a few of these pitchers without the bands and later added the bands to the molds. Perhaps Mr. Frank Fenton could help us out on this. It is possible that this might show up in some of his old company records on this pattern. You might all check your "Floral & Grape Variant" water pitchers to see if you too might have one of these "Bandless Variants". The above snapshot was sent to us by Byron & Grace Rinehart, We want to thank them for sending this to us in order that all of our carnival glass collectors, both new and

old, can learn about this interesting variant. Isn't collecting this beautiful carnival glass just great? There seems to be no end to the interesting and exciting facts about this fine glass.

The Rinehart's also wrote that they recently found an aqua opal "Wishbone" bowl. It was like the one purchased at the H.O.A.C.G.A. convention auction a few years ago by Roland Kuhn and Donald Kime. This makes the third of these that we know about. Surely there must be a few more out there some where. The Rinehart's report that this would be their Christmas present. I am sure that this will help make their Christmas a very merry one.

Pictorial Pattern Parade by
John & Lucile Britt

WELCOME

NEW MEMBERS

M/M E. Leroy Flickinger, Mt. Airy, Nc
M/M R. L. Kelly, Licking, Mo
Laura Hartzfeld, San Diego, Ca
Clara Valentine, Midland, Mi
M/M Tony Giondo, Foristell, Mo
M/M Billy Cotton, Weatherford, Tx
M/M Raymond Michael Jr., Irvington, Ala
M/M Robert Hurst, Marlboro, Ma
M/M Richard Hauser, San Antonio, Tx

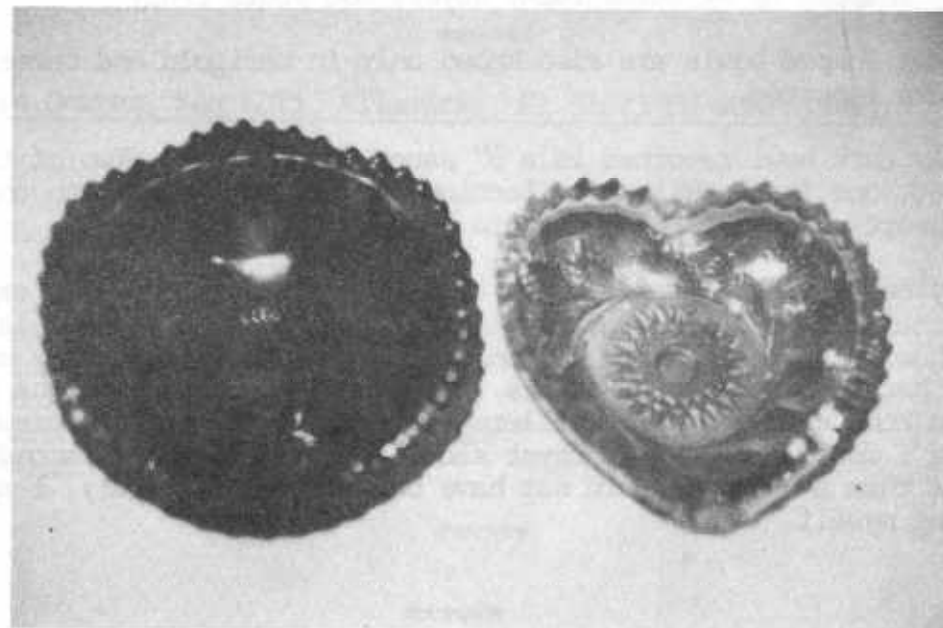


MILLERSBURG NOTES #8 - By Bill Edwards

HOBSTAR AND FEATHER

As much as I like all Millersburg patterns, I must confess Hobstar and Feather is my favorite. It is massive, graceful, restrained and vigorous all at the same time; but beyond that it is just plain beautiful.

Known in many shapes including a giant footed rosebowl, a whinsey compote and vase pulled from the rosebowl mold, a fantastic punch set which may be either flared top or tulip type top, a very rare table set, a very rare small stemmed compote, a 6" heart shaped bowl, a 6" round bowl, a 5" diamond shaped bowl and a punch bowl whinsey, again pulled from the rosebowl, Hobstar and Feather was one of the original patterns the factory started production with. While many additional shapes are known in crystal, the carnival pieces are most noteworthy and rare.



By John Resnik

The punch set is quite large and is found in marigold, green or amethyst. Only the amethyst has turned up with the tulip top but I suspect green was made this way also. Most of these punch sets have plain interiors, but both green and marigold sets are known with the beautiful Fleur-de-Lis on the bowl's interior. All of the cups are unpatterned inside however.

The rosebowl has long been rumored in marigold, but only green or amethyst are presently known. The vase turned up in both dark colors but only one amethyst flaired compote is known and the one-piece whimsy punch bowl is known in green only.

The table set is one of the prettiest I have seen and individual pieces are known in green, amethyst and blue but the only complete set is in amethyst (at least the only one I know about). The butter base has scalloped edge much like the Country Kitchen one and all pieces are in high radium finish.

Only recently has the tiny compote surfaced and it is in soft marigold with good color. At this years A.C.G.A. convention four marigold diamond shaped 5" bowls were offered by one Millersburg area collector and were eagerly snapped up by three lucky buyers and yours truly.

The heart shaped bowls are also known only in marigold and three of these are reported.

The only dark bowl reported is a 6" sauce in amethyst. Two of these are reported, one in the Wilson collection and one in mine. Both the marigold heart shape and the sauce are shown in the photo.

I truly believe more shapes exist that have not been thus far exposed. These include spade and club shaped small bowls, as well as a large berry bowl. All this seems reasonable since the items already known surely had their companion pieces. So keep your eyes open and perhaps you can come up with a true Millersburg rarity. I know if someone told me I would find the amethyst sauce and the marigold diamond pieces in less than a week, I could not have believed them. Truly, I am still pinching myself.

I hope Don Moore will forgive me for ranging into his territory, "The Shape of Things in Carnival Glass" but I started thinking about the multitude of available shapes in this months featured pattern and decided to share my observations with you.

The Horse Medallion (Presznick-Hand) or Horse's Heads (Hartung) was manufactured in only two basic molds:

1. Collar based from which the 7 1/2" plates and somewhat smaller bowls were made. This mold has the "Gooseberry" or "Berry and Leaf Circle" back pattern that also appears on the back of the Lion bowl, Soldiers and Sailors plates and the 7 1/2" size Leaf Chain plates and bowls.
2. The more commonly seen 3 footed variety from which the bowls and rose bowls are made. This mold has a back pattern consisting of 12, slightly indented, smooth panels. Though only two mold types were utilized on this pattern, the shape variations available are legion.

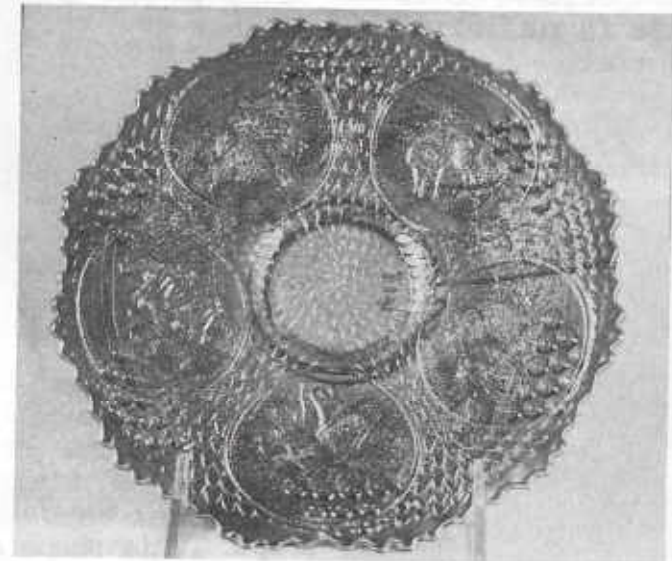


Photo #1 shows the 7 1/2" plate. The only colors I know of are marigold and blue, the marigold being scarce and the blue bordering on rare. The bowl from this collar based mold is known in amberina and a pure red. To find a flat plate in either of these colors would be a collectors dream come true.

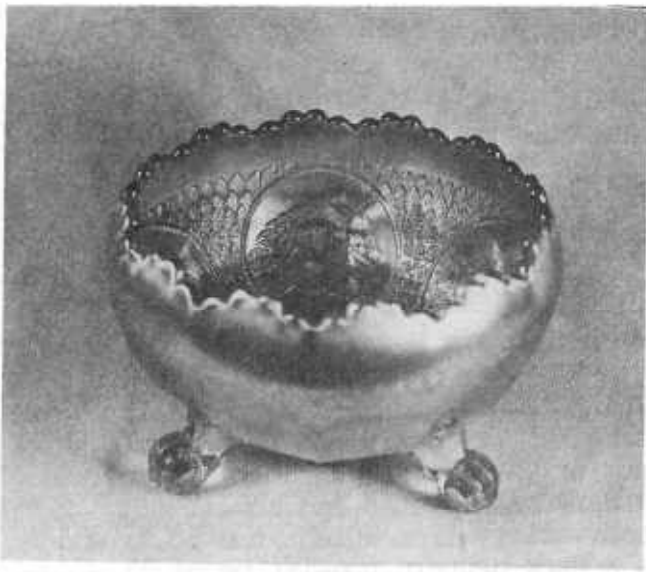


Photo #2 is the rose bowl shape, once again known to me only in marigold and blue; other colors are distinctly possible however, since the bowls in this footed variety are known in numerous colors.



Photo #5 depicts what is commonly called the nut bowl shape. Every red footed bowl I have seen has been of this variety.

Photo #3 shows what I believe to be the most common shape (8 ruffle) found in the footed bowl.

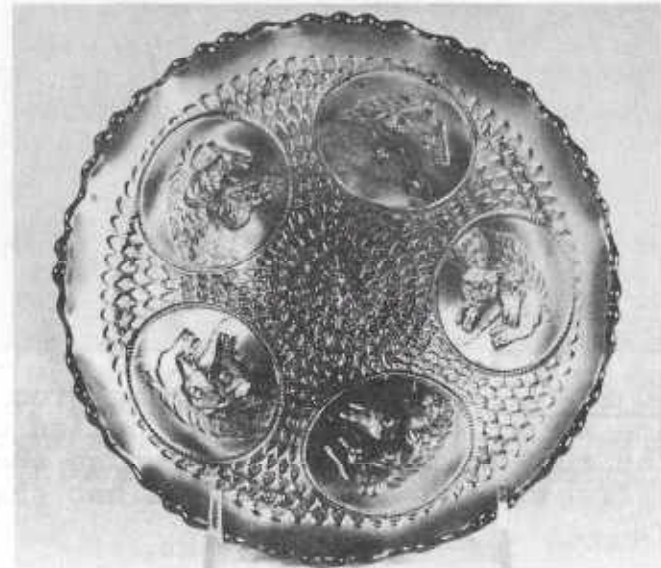
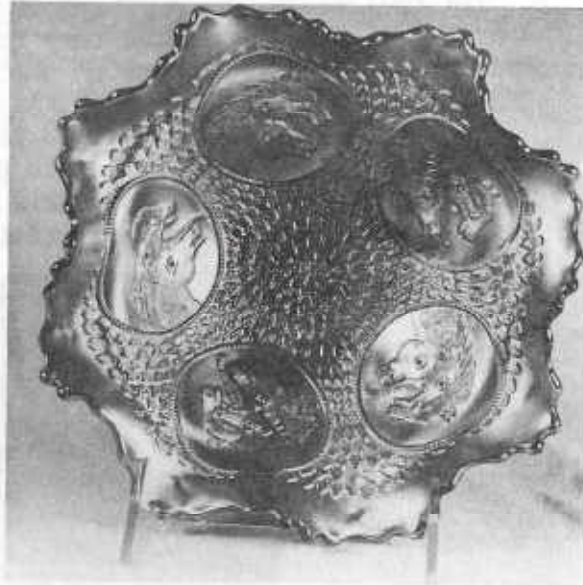


Photo #6 shows what I believe to be the most unusual shape found in the Horse Medallion footed bowl. This, out of necessity, would have to be called ice cream shaped. Perfectly round, slight concavity, verticle 1/2" lip at the outer edge.

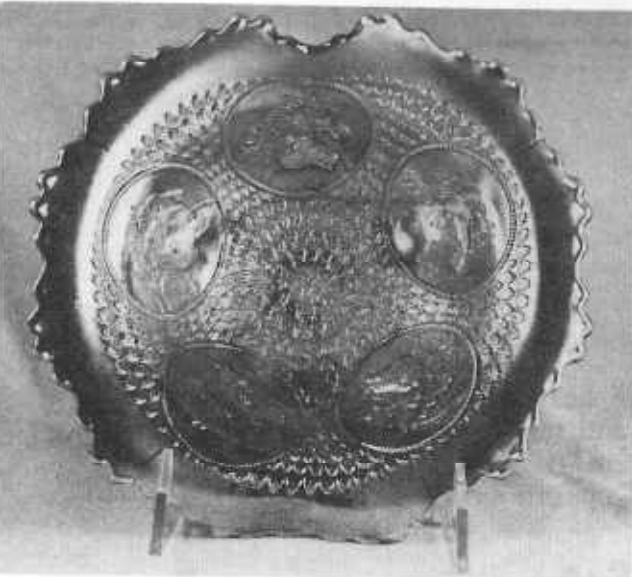


Photo #4 is the Jack-in-the-Pulpit shape. This shape comes with varying degrees of pronouncement to the front and rear bends. The one shown here is relatively mild.

Colors known in the footed type Horse Medallions bowls, in reverse order of rarity, are: marigold(#4), blue (#6), green (#3), vaseline (#5), amberina, and red. Rumors persist as to the existance of amber and white, but I personally have never seen either of these colors.

Late Edition: Received a footed nut bowl today on base aqua. Never heard of this color on a Horse Medallions bowl before. Rarity must rank just before or just after red.

BY DON MOORE

Carnival Cameos

BY DONALD MOORE



CIRCLED SCROLL - These pieces came from the same mold, but the vase was pulled up from the tumbler to form the vase as shown here. It can also be found as a hat shaped whimsy.

This is a rare pattern. The maker has never been confirmed, but the concensus favors Northwood. In addition to the whimsy vase and hat shape, it was made in a berry set, table set, and water set. Marigold and amethyst are the only two colors known. In marigold, as shown, the tumbler will sell in the \$200 - \$250 range, and the whimsy vase will go for around \$50.

Someone at the Fenton factory liked Hearts. In addition to the Heart & Vine pattern, this motif was used in a number of other patterns as well, such as Hearts & Trees, Stream of hearts, Panther, etc. Just why someone felt that hearts went with Trees, vines & panthers is unknown. I submit however, that it makes as much sense as other combinations we have learned to accept & enjoy such as Peacock & Grape, Dragon & Lotus, Peacock & Dahlia or Dragon & Berry. Who cares about logic if the pattern is pleasing. These strange combinations provide a certain uniqueness & charm that adds still another dimension to the pleasures of collecting Carnival.

The ad shown here is from the mid-spring edition of the 1911 Butler Brother's catalog. A Heart & Vine bowl is shown in the center at the bottom of the display. You will also recognize Captive Rose, Vintage, Birds & Cherries, Rustic & even a Wreath of Roses cup on a Pine Cone saucer. How about that 84 cents a dozen? This comes to 7 cents a throw. How many Captive Rose plates do you want? Better take several as they are all in dark colors.

"VENETIAN ART" ASSORTMENT—(Iridescent).

Entirely new composition of business makers. Beautiful new art designs and color tones.



101607—Popular pieces, new wreath and cloisonne effect embossing, violet, royal blue and green bodies, exquisite oriental art iridescent finish, 1/2 doz. each of 15 items:

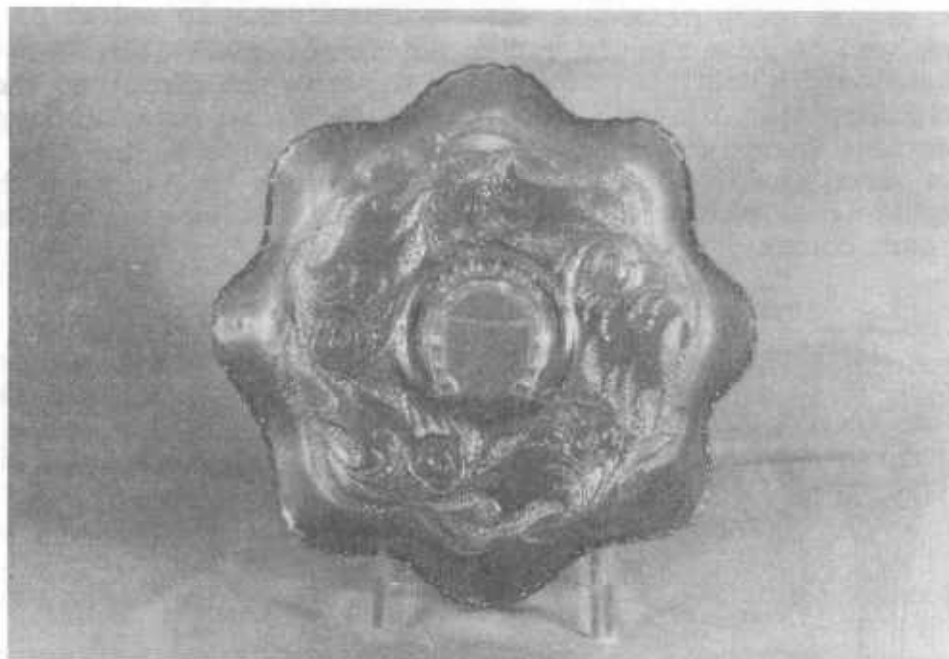
8 1/2 in. crimped footed salad.	5 1/4 in. basket nut bowl.
6 " square double hdl. bonbon.	7 " double hdl. card receptacle.
12 " rustic vase.	9 1/4 " cake plate.
6 " high comport.	8 " high crimped comport.
8 " round footed salad.	9 " star berry bowl.
2 pc. epergne, 6x5.	7 1/4 " double hdl. oval bonbon.
8 in. double hdl. square bonbon.	13 " vase.
Sherbet set, 6 1/4 in. plate, handled cup.	
7 1/2 doz. in tierce, 127 lbs.	

Doz. 84c

This Heart & Vine pattern was made only in 9" bowls and plates. It is known in marigold, amethyst, blue and green. Pastels have been reported but I do not recall ever seeing one.

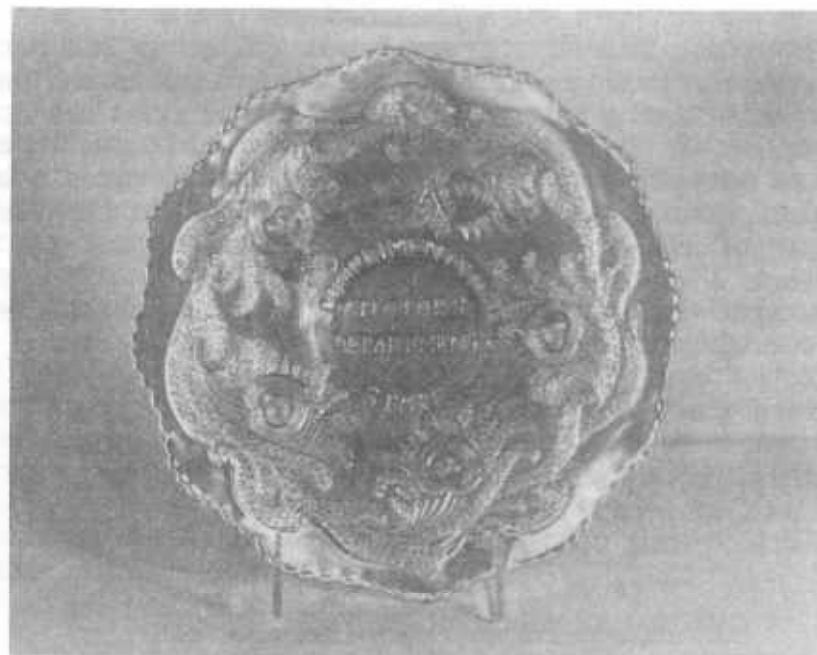
While they did not show any great imagination as to the number of shapes they used with this pattern, they were not inhibited when it came to the things they did with these bowl and plate shapes. Let's take a look at some of these innovations.

HEART & HORSESHOE



This is basically the Heart & Vine pattern with the horseshoe superimposed in the center. This is often referred to as Fenton's version of the more common Northwood Good Luck pattern. It is much more rare and on today's market it will command a price of some \$450. It is known only in marigold and only in a 9" bowl as shown. Several references have been made to a plate but none exist as far as I know.

SPECTOR'S DEPARTMENT STORE



Here again the basic Heart & Vine pattern is used on this advertising piece. This time it is a 9 1/2" plate rather than a bowl. As with the Heart & Horseshoe it is found only in marigold. While not in the same rarity category as the Heart & Horseshoe, it is not easily found and will sell for around \$175.

COOLEEMEE, N.C. ADVERTISING PLATE



This is the rare one. Only 4 or 5 are known. They are all marigold and again it uses the basic Heart & Vine 9 1/2" plate as the background for the advertising message. This piece promotes the J. N. Ledford Company which operated a textile mill in this small North Carolina town of some 2,000 people. It is located 20 miles southeast of Winston-Salem. One of these plates sold for \$750 at the Roebuck auction in March of 1980. It would bring more today.

This is the saga of the Heart & Vine pattern and its variations. Whether or not it is one of your favorites, the manner in which it was used commands our attention.

Don Moore

CARNIVAL GLASS JAMBOREE FEBRUARY 13TH

The Tampa Bay Carnival Glass Club will present it's Lose Your Heart To Carnival Glass Jamboree, Saturday, February 13, 1982 at the Lakeland Hilton, Lakeland, Florida. The Jamboree will be informal and the following schedule is a guide line.

Saturday, February 13, 1982:

7:30 A.M. - 8:30 A.M. Set up displays

8:30 A.M. - 10:30 A.M. Viewing, buying, selling, trading. Open to guests only.

11:00 A.M. - 3:00 P.M. Open to public. Above activities continue.

3:30 P. M. Set up for dinner banquet

6:00 P.M. Dinner served.

8:30 P.M. - 11:00 P.M. Tom Burns, auction

There will be many knowledgeable carnival glass collectors in attendance who will share their knowledge with you. You are requested to bring carnival glass for display. If you have glass you wish to sell or trade this will be an opportunity.

Special room rates are available at the Hilton. Reservations will be accepted until January 20. Banquet reservations close February 5. Call the Lakeland Hilton 813-688-8484 for prompt service. The Tom Burns Auction is a bonus feature of the jamboree. Tom Advises he has a good collection

of carnival glass in the price range we like to buy.

Additional information may be had by calling Art Smith at 813-644-4058. The Tampa Bay Carnival Glass Club is looking forward to seeing you.

Arthur I. Smith

REPORT FROM TAMPA BAY CARNIVAL GLASS CLUB

The Tampa Bay Carnival Glass Club combined it's December business meeting with a gala Christmas Party hosted by Maurice and Shirley Conyer of Madeira Beach. Plans were nearly completed for the Jamboree to be held February 13 in Lakeland. The following officers were elected for 1982: Arthur Smith President, Walter Holzworth Vice President, Shirley Conyer Secretary and Naomi Calkins Treasurer were re-elected. The group expressed appreciation to Ruth Argyros, the founder of the club and President for the past two years.

Following the business meeting the group enjoyed a delicious buffet and an exchange of gifts. The Conyers had their beautiful home festively decorated for the holiday and a fine time was had by all. A few days following the meeting it was learned that Ruby Pitt had an automobile accident on her way to the meeting. Ruby was hospitalized with painful injuries. However, a speedy recovery is anticipated and we are looking forward to seeing her at the January 17th meeting which will be held with Dorothy and Arthur Smith in Lakeland.

Arthur I. Smith

First Annual Keystone Old Carnival Glass Show and Sale Lititz Recreation Center, Lititz, Pa., March 20, 1982, 10:00 A.M. to 8:00 P.M.. Anyone interested in participating, please contact Keystone Carnival Glass Club, % Woody Funk, Chairman, 563 Hi View Drive, Lititz, Pa. 17543, PH 717-665-2395.

Nancy C. Williams
2009 Cullum Drive
Reading, Pa 19601

TAMPA BAY CARNIVAL GLASS CLUB NEWS

The regular monthly meeting of the Tampa Bay Carnival Glass Club was held November 15 at the home of Naomi Calkins in Clearwater. President Ruth Argyros presided at the business meeting which followed a delightful luncheon buffet. Art Smith gave an up-dated report on the Lose Your Heart To Carnival Glass Jamboree to be held Saturday, February 13, 1982, at the Lakeland Hilton. Special rates are available at the Hilton for five days prior and five days following the jamboree. This affords visitors an excellent opportunity for a winter vacation at reduced rates. A banquet will be held Saturday evening. Additional information can be had by writing Art Smith, 4535 Holder Court, Lakeland, Fl 33803 or calling 813-644-4058. Final plans have not been completed for a special event to be announced later.

A feature of the meeting was a talk by Naomi Calkins on "Looking For Bargains in Carnival Glass". Naomi related several interesting experiences. Shirley Conyers presented an interesting report on "History of Carnival Glass Associations". Shirley drew upon her background and association in Carnival Glass activities to give an illuminating report.

The annual Christmas Party will be held December 20 at the home of Shirley and Maurice Conyers at Madeira Beach.

Arthur I. Smith

AIR CAPITAL CARNIVAL GLASS CLUB

The Air Capital Carnival Glass Club met at the home of Roland Kuhn and Donald Kime for our December meeting and annual Christmas supper after the meeting. Again this year we had lots of good thing to eat and we also had our election of officers. The same group of officers were again elected for another year.

A beautiful Butterfly & Berry ice cream bowl in green was shown to us by one of our members. Upon researching with other collectors it is believed to be only the second one known at this time. The other one is owned by a collector in California. Of course another of our members came up with an aqua opal "Wishbone" bowl. This is the third one that has shown up.

Donald E. Kime
Secretary

OLD CARNIVAL GLASS LIBRARY

"The Shape of Things in Carnival Glass", 110 pages, 200 items in full color, \$9.95-Donald Moore, 2101 Shoreline Drive, Alameda, Calif 94501

"Carnival Glass Series", each book has 100 different patterns illustrated and described-10 books in the series, books 1,2 and 3-\$3.00 ea, books 4 thru 10-\$3.50 ea. New edition 1981-82 price guide-\$5.00 pp, Northwood Pattern Glass-clear, colored, custard and carnival-\$9.95 plus 50¢ postage. Marion T. Hartung, Box 69, Emporia, Kansas 66801

"Carnival in Lights", A full color book on Carnival Lighting, including Gone With The Wind Lamps, Candle Lamps and shades-price guide included-\$11.95 plus postage, Helen Greguire, 103 Trimmer Road, Hilton, New York 14468

"Carnival Glass Tumblers"-Author Richard Owens-order from Mr. Don Brown, Wallace-Homestead Book Company, 1912 Grand Ave., Des Moines, Iowa 50303

"Imperial Carnival Glass"-The Early Years"-\$9.95, "Fenton Carnival Glass-The Early Years"-\$9.95, New price guide 1981-82 edition-\$3.95-"Millersburg The Queen of Carnival Glass"-\$8.95, "Rarities in Carnival Glass"-\$8.95, Author Bill Edwards. The books may be ordered from Collectors Books, Paducah, Kentucky.

"Carnival Glass Price Guide", Sherman Hand & Charlotte Williams-\$5.95 pp. Order from Sherman Hand, 127 Olympic Circle, Vacaville, Calif 95688 or Charlotte Williams, 630 N Lower Sacramento Rd., Lodi, Calif 95240

Angela Hallam's 52 page fully illustrated paperback-first book to tell you about the English-made Carnival in your collection-can now be had for as low as \$4.85, surface postage, air **mailed** \$5.85 to WISE BOOKS, 82 Chart Lane, Reigate, England, RH2 7EA Get wise and be in the know about those English-made items of carnival glass you have so often been puzzled over.

OTHER REFERENCE MATERIAL

Presznick's "Encyclopedia of New Carnival and Iridescent Glass". A great reference book with color plates galore and prices, \$19.95. Reichel's "Modern Carnival Glass." 100 illustrated pages of Carnival made since the 1960's. Volume 1, \$4.00, Volume 2, \$4.95, Price Guide for both volumes \$2.50. Add \$2.00 for shipping and insurance. Theodore A. Parent, Box 596, RD 1, Canfield, Ohio. 44406

"Encore by Dorothy" books 1 and 2. A series of books on new reproduced Carnival Glass, giving information on the patterns and colors that are being reproduced. An invaluable asset to the old carnival collector, possibly saving him many dollars by knowing what has been reproduced. Price for each book is \$7.70 postage paid. Be sure to state which book you want. Dorothy Taylor, Box 11734, Kansas City, Missouri, 64138



A, A, Fogleman, 2300 Hemlock Dr., High Point, N C 27260 PH 919-454-3267

G	EI	Inverted Feather covered cracker jar	200
A	EI	G/C Orange bowl (N)	225
W	EI	Diamond & Daisy vase 8"	60
B	EI	Peach tumbler (N)	50
G	EI	Bushel Basket (N)	125
G	EI	Windmill dish or tray	60
A	EI	G/C covered butter dish (N)	175
M	EI	Fashion water set 7 pc	290
IB	EI	G/C 9" bowl Stippled background	180
A	EI	Vinyard/Peacock Eye & Grape water set 7 pc	625

Jim McClure, 116 Mansfield St., Belvidere, N J 07823 PH 201-475-3077

B	EI	Rose Show plate	275
P	EI	Scroll Embossed plate	75
B	EI	Orange Tree creamer	35
P	EI	Three Fruits plate	75

Patricia Craver, Box 8015, Allandale, Fl 32023 PH 904-788-5315

M	EI	Beaded basket 2 ea	25
MG	EI	Floral & Optic bowl rough ft	75
M	EI	Beaded Cable candy dish	25
M	EI	Hobstar Band tumbler	30
M	EI	Rambler Rose pitcher	115
M	EI	Optic & Buttons 12" handled bowl	18
M	EI	Imperial Grape 10" bowl	18
G	EI	Coin Dot 8" bowl	20
W	EI	Orange Tree punch bowl no base	175
M	EI	Diamond Lace 8" bowl	20

Dick Hatscher, Walnut Hill Rd Box 261, Bethel, Ct 06801

PH 203-743-1468

M	EI	Good Luck (N) bowl	58
M	EI	Poinsetta milk pitcher	35
P	EI	Holly Whirl sauce boat	38
P	EI	Maple Leaf rugar bottom	30
P	GI	Maple Leaf creamer	30
B	EI	Stork & Rushes tumbler	25
W	EI	Apple Blossoms Twig ruffled plate 10 1/4	125
IG	GI	Rose Snray compote jack in pulpit shape rare	95
PO	GI	Leaf Ray nappy	28
PO	EI	Stippled Flower bowl	28

Omer E Sweeney, 140 North Tropical Trail Lot 6, Merritt Island,

Florida 32952 PH 305-453-6237

PO		Northwood Fan occasional bowl	45
M		Diving Dolphin bowl	165
M		G/C tumblers 3 N ea	23
M		G/C cookie jar damage where lid rests	100
P		Leaf & Beads rose bowl	60
P		Fine Cut & Roses rose bowl N	60
G		Greek Key tumbler N	105
G		Primrose bowl	75
P		Beaded Shell mug	95
M		G/C dresser tray	150

Linda Rivers, 140 N. Tropical Trail Lot 6, Merritt Island,

Florida 32952 PH 305-453-6237

P		Good Luck bowl N	130
P		G/C fruit large bowl	235
P		Diamond Lace water pitcher	165
P		Fishermans mug	95
M		Hobstar & Feather punch cup 2 ea	20
M		Fenton G/C w/Persian Medallion int fruit bowl	95
M		G/C 8 pc punch set	320

M		Windmill & Mums 10 1/2 bowl	65
M		Grape Arbor 7 pc water set	410
G		Singing Birds tumbler	35

Edward Henderson, 1111 N. College, Stuttgart, Ark 72160

PH 501-673-8757

P	EI	(N) Basketweave bowl base chip	40
LM	EI	Diamond & Thumbprint bowl	25
M	EI	Dragon & Lotus bowl	45
M	EI	Flower & Loops bowl	40
M	EI	G/C bowl	35
DP	EI	(N) Greek Key bowl	90
B	EI	Holly Spray bowls 2 ea	50
M	EI	Holly Spray bowl	25
M	EI	Holly Spray sherbert	20
S	EI	Tulip vase	35

Gil Corriveau, Box 5, Sturbridge, Ma 01566 PH days 617-347-3304
nights 617-347-9930

P	EI	G/C hatpin holder	160
M	EI	Strawberry plate N	50
P	EI	Good Luck bowl	80
G	EI	Singing Bird 7 pc water set	450
P	EI	Princess Lamp	215
G	EI	Pansy Spray dresser tray	75
P	EI	Star of David bowl Imperial	50
G	EI	Mayan bowl	45
M	EI	Imperial Grape wine decanter	70
P	EI	Singing Birds mug	60

Acelle Taps, 3672E 59th St Dwn Rear, Cleveland, Ohio 44105 Ph 216-883-8744

M EI	Wine & Roses water pitcher rare	225
A EI	Three Fruits plate 9"	100
M EI	Panneled Dandelion tankard pitcher	390
A EI	Poppy Show plate 9" rare	350
M EI	Flute & Cane tankard pitcher rare	365
G EI	Millersburg Diamond pitcher	400
M EI	Brooklyn Bridge bowl scarce	375
A EI	Stag & holly 3 ftd bowl 12"	175
A EI	Tiger Lily tumbler	47.50
A EI	Grape & Cable punch set 6 cups (N)	875

Jos Mello, 535 Fish Rd, Tiverton, R I 02878 Ph 401-624-2174

W EI	Hearts & Flowers bowl	70
M EI	Panther small berry bowl	30
M EI	Apple Panells sugar & creamer both for	30
G EI	Vintage ribbon edge candy dish	25
A EI	Scroll Embossed small bowl file ext	15
A EI	Broken Arches punch cups 2 ea	20
M EI	Memphis punch cups 4 ea	18
M EI	Sunflower bowl spatula ftd	22
M EI	Orange Tree punch bowl & base only	80
M EI	Peacock Tail compote	18

Bonnie Parkhurst, Rd 1 Box 87, Canastota, N. Y. 13032

PH 315-337-9118

M EI	Orange Tree punch cup	11
M EI	Leaf & Beads (N) rosebowl flared candy dish	28
M GI	Ships & Stars plate	20
PO EI	Petal & Fans small berry bowl	22
G EI	Heavy Grape one handled nappy	25
G EI	Pansy creamer Imperial	22
G EI	Diamond & Rib vase 10"	22
M EI	Three Fruits 9" plate	60

Mary Kesterson, 3020 Mesa Rd, Willow Park, Tx 76086 PH 817-441-8410

M EI	Cosmos plate 9"	65
W EI	Daisy & Drape vase	120
M EI	Double Dutch bowl 9"	35
M EI	Fishermans mug	195
P EI	G/C covered butter	185
M EI	Lion bowl 8"	85
G EI	Singing Birds tumblers 4 ea	45
P EI	Oriental Poppy tumblers 6 ea	50
R EI	Vintage nut bowl 3 ftd	495

Paul Berube, 11 Doris Ave, Tiverton, R I 02878 PH 401-625-5303

W EI	Hearts & Flowers bowl 9"	55
IG EI	Acorn Burr punch cups 4 N Ea	50
M EI	Kitten cup and saucer	225
M EI	Octagon varient tumbler 4 ea	12
B EI	Good Luck bowl	90
M EI	Vintage punch cups 4 ea	8
G EI	Lustre Flute creamer N	12
M EI	Star & File water pitcher	125
A EI	Stork & Rushes butter base rare	60
M EI	Diamond Block shade	22

Lydia Caudle, Rt 1 Box 87, State Rd, N C 28676 PH 919-874-2519

TB EI	Leaf Swirl Millersburg compote	55
M EI	Orange Tree ftd 7 pc water set	485
W EI	Cherry Chain bowl	165
P EI	G/C banana boat	189
G EI	Loving cup Orange Tree	149
P EI	Rose Show bowl small silver	139
R EI	Stippled Rays 2 handle compote	295
M EI	Bushel basket flared or straight ea	55
A EI	Bushel basket	65
P EI	G/C 7 pc water set	395

Paul Gamache, Box 394 Barton Rd, Apalachin, N Y 13732 PH 607-625-4485

W EI	Floral & Optic ftd plate	75
M EI	Millersburg Grape Wreath bowl	40
P EI	Cherry Wreath oval bowl	125
M EI	Peach & Pear oval bowl	50
B EI	Dragon & Lotus bowl	55
M EI	Graceful	35
P EI	Vintage sandwich tray	35
G EI	Comet bowl	40
B EI	Fentonia tumbler	60
P EI	G/C plate	85

Darlene Yohe, Box 343, Stuttgart, Ar PH 501-673-3437

G EI	G/C ice cream bowl 11" small mold flake on rim	140
B GI	Peacock at Fountain tumblers sm flake on base of 2 and rim of one all 3 for	40
G GI	Hanging Cherries sugar lid	22
B GI	Stork & Rushes tumbler	20
PM EI	Peacock at Fountain tumblers 2 ea	25
G EI	G/C powder jar N	95
P EI	Dahlia creamer	85
P EI	Dahlia sugar base	75
P EI	Dahlia butter base	75
P EI	Basket N	75

Wayland Billingsley, 206 N Union St., Appleton, Wi 54911 PH 414-733-3102

A EI	Peacock at Fountain 3 pc butter dish, spooner, creamer with tiny no harm flake on side spout	375
A EI	Vintage 2 handled bon bon Fenton	29
A EI	Milady tumbler rare	65
P EI	Lined Lattice vase 8"	30
M EI	Star & File decanter w/stopper and 2 wines rare	195
CLM EI	Waffle Block basket with bail	65
G EI	Singing Birds pitcher 6 tumblers one tumbler flake on rim	550
B EI	Fernery or nut bowl ftd Grape pattern	50
S EI	Imperial Grape bowl large 10 3/8	35
M EI	Heavy Grape 7 pc berry set Fenton	115

30

Mary Welch, 213 Alexander, Scotia, N. Y. 12302 Ph 516-393-7748

A EI	G/C plate (N) basketweave center leaf 7 3/4	45
A EI	G/C tumblers 12 ea	23
IG EI	Florentine candlesticks pr	55
B EI	Florentine candlesticks celeste blue pr	49

Send 2 stamps for lists of 375 pieces

A. C. Dickey, 144 144 Chandler St., Vacaville, Ca 95688 Ph 707-448-9386

M	Bouquet water set 7 pc	300
M	Imperial Grape 7 pc water set have two ea	165
M	Ranblin Rose 7 pc water set	230
LM	heavy Iris pitcher	250
M	Floral & Grape variant pitcher	65
P	Diamond Lace pitcher & two tumblers	280
M	Floral & Grape 6 pc water set variant	250
M	Grape Arbor 7 pc water set	380
M	Lattice & Grape 7 pc water set one tumbler variant	275
M	heavy Iris 7 pc water set	600

John Resnik, 4290 Jackson Ave, Culver City, Ca 90230 PH 213-839-1588

M EI	Grape & Gothic Arch tumblers 4 ea	20
M EI	Forget-Me-Not enameled tumblers 5 ea	22
M EI	Floral & Grape tumblers 5 ea	18
A GI	Floral & Grape tumblers 5 ea	25
A EI	Paneled Dandelion tumblers 4 ea	32
M EI	Peacock at Fountain tumblers 3 ea	25
M EI	Oriental Poppy tumblers 2 ea	32
P EI	Oriental Poppy tumblers super 3 ea	45
A EI	Grapevine Lattice tumblers scarce 3 ea	48
B EI	Ten Mums tumblers 2 ea	75

31

George O. McGrew Jr., 6800 Woodward, Overland Park, Ks 66204
PH 913-262-8822

M EI	Fenton G/C ftd bowl	40
M EI	Stag & Holly 8" ftd small bowl small hairline in ft	40
M EI	G/C N ftd bowl small nick on ft	30
M EI	Peacock & Um compote	40
AO EI	Fine Cut & Roses candy dish feet rough	230
R EI	Stippled Rays 6" berry dish	230
M EI	Puzzle stemmed bon bon	30
M GI	Ship & Stars plates have two ea	15
G EI	Thistle 9" bowl	55

George Loescher, 2420 Park Ave, Beloit, Wi 53511 Ph 608-362-3104 noon or
after 6PM

M EI	G/C tankard tumbler	40
P EI	Peacock on Fence plate	195
W EI	Poppy Show bowl frosty	140
AO EI	Hearts & Flowers compote	210
W EI	Rose Show plate frosty	200
TB EI	G/C 9" ruffled bowl	210
PO EI	Posie & Pod 6" plate	100
M EI	Good Luck piecrust edge bowl	65
G EI	Old Rose Distillery G/C plate	125
M EI	Bambi powder jar	13

Dorothy Thomason, Rt 1 Box 51, Lipan, Tx 76462 PH 817-646-2449

P EI	G/C hat pin holder inside heatcheck	110
------	-------------------------------------	-----

Helen Nadeau, 18 Thomas Olney Common, Providence, R I 02904 Ph 401-521-4581

P EI	Maple Leaf ice cream ftd bowl large	90
P EI	Fishermans mug	95
P EI	Raindrop bowl	40
P EI	N Grape punch cups 6 ea	15
G EI	N Grape punch cups 2 ea	15
B EI	Dragon & Lotus bowl 9"	35
B EI	Fenton Peacock & Um 9" bowl	90
M EI	Daisy & Plume candy dish N	20
M EI	Wide Panel bowl 9" N	20
M EI	Grape Arbor fruit bowl	90

Dr. Allen Jones, 1010 Sycamore St., Bristol, Va 24201 PH 703-466-8696

M EI	Heavy Iris tankard pitcher & 1 tumbler	325
M EI	Panelled Dandelion 6 pc water set ash spot base	250
M EI	Pony bowl	55
P EI	Peacock at Fountain 7 pc water set	495
M GI	Lattice & Daisy 8 pc water set	195
A EI	Wishbone pitcher & 1 tumbler damage	250
P EI	G/C (N) tumblers for tankard 2 ea	70
A EI	Memphis punch cups 4 ea	25
G EI	Mayan bowl	60
M EI	Stag & Holly bowl 3 ftd 11"	95



WANTS

Larry Keig, Box 601, Fayette, Ia 62142 Ph 319-425-4467 evenings

- G Imperial Grapes wine decanter stopper
- P Imperial Grapes wine decanter stopper
- R Pulled Loop vase 11-12"
- G Pulled Loop vase 11-12"
- P G/C (N) powder jar cover
- G Inverted Strawberry powder jar cover
- M Britt, Iowa souvenir basket
- M Anana, Iowa miniature mug (Near Cut)

Charlie Drake, 601 Garwood, Smithville, Tx 78957 Ph 512-237-2840

- IG Corn vase
- DM Star & File cup & saucer
- D Millersburg Seaweed bowl
- D Horses heads plate
- B Fenton Bouquet water pitcher

Burney Talley, 1814 Slate NW, Albuquerque, N. M. 87104 Ph 505-242-1261 aft
6 PM MDI

- P Imperial Grape wine decanter stopper
- P Imperial Grape wines 4
Corn Bottles all colors

34

John Resnik, 4290 Jackson Ave, Culver City, Ca 90230 PH 213-839-1588

- A Grape Arbor Orange bowl
- M Harvest Flower tankard pitcher
- A Orange Tree hatpin holder
- W Orange Tree hatpin holder
- A Orange Tree orange bowl
- W Orange Tree orange bowl
- W Orange Tree rosebowl
- R Plaia bowl
- W Embroidered Mums bowl
- B Hearts & Flowers bowl

Jos Mello, 535 Fish Rd, Tiverton, R. I. 02878 Ph 401-624-2174

- M Peacock at Fountain creamer to table set
- M Acorn Burr top only to punch set
- B Panther bowls small need 5
- A Vintage punch bowl base
- A Wide Panel epergne base
- A Vintage with Wreath of Roses exterior punch cup
- G Acorn Burr top only to punch set
- A Imperial Grape punch cups need 6

Dick Hatscher, Walnut Hill Rd Box 261, Bethel, Ct 06801
PH 203-743-1468

- IB Hearts & Flowers compote and any other color
- PO Milk Glass on Carnival items

Dr. Allen Jones, 1010 Sycamore St., Bristol, Va 24201 PH 703-466-8696

- B Apple Tree tumblers
- B Butterfly & Plume tumblers
- G Panelled Dandelion tumblers
- M Peacock at Fountain punch cups

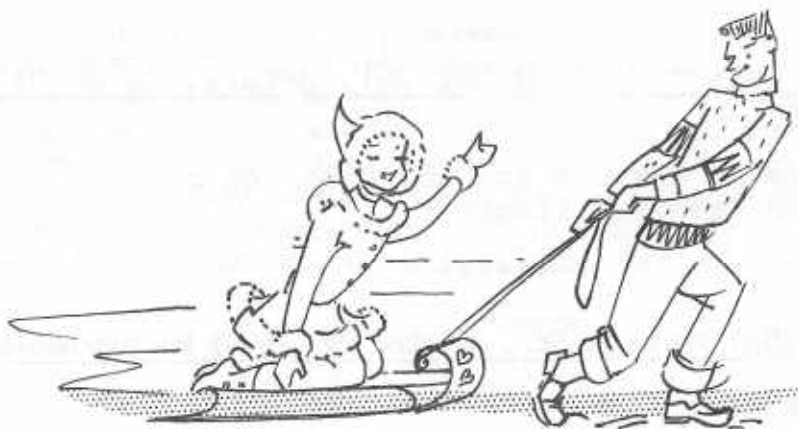
35

Lydia Caudle, Rt 1 Box 87, State Rd, N C 28676 PH 919-874-2519

- G Dandelion water set or part of (N)
- IB Water sets or parts of sets
 - Fluffy Peacock tumblers any color
- P Springtime tumblers
- G Springtime tumblers
 - Millersburg carnival any color good quality
- IG Peacock on Fence plates
- IB Peacock on Fence plates
 - Peach water set either color (N)
 - Northwood Peacock bowls

Dorothy Thomason, Rt 1 Box 51, Lipan, Tx 76462 PH 817-646-2449

- G G/C ruffled berry dish 6" (N)
- EB G/C ruffled berry dish 6" (N)
- P Stopper for Imperial Grape decanter
- W Grape Delight nut bowl
- P G/C one handled nappy (N)
- P Imperial Grape tumblers



PLEASE MAKE CHECKS PAYABLE TO H.O.A.C.G.A.
AND SEND THEM TO THE SECRETARY.

Lucile Britt
3048 Tamarak Drive
Manhattan, Kansas 66502

WILL PICK UP:

_____ 1982 Souvenir Corn Vase (s) at
\$40.00 each.

PLEASE MAIL:

_____ 1982 Souvenir Corn Vase (s) at
\$40.00 each. Add \$3.00 postage
for each corn vase.

PLEASE PRINT FULL NAME AND ADDRESS

LIMIT 2 PER COUPLE OR SINGLE MEMBERSHIP
Please return this order form along with
your payment in full to the Secretary, at
the address above.