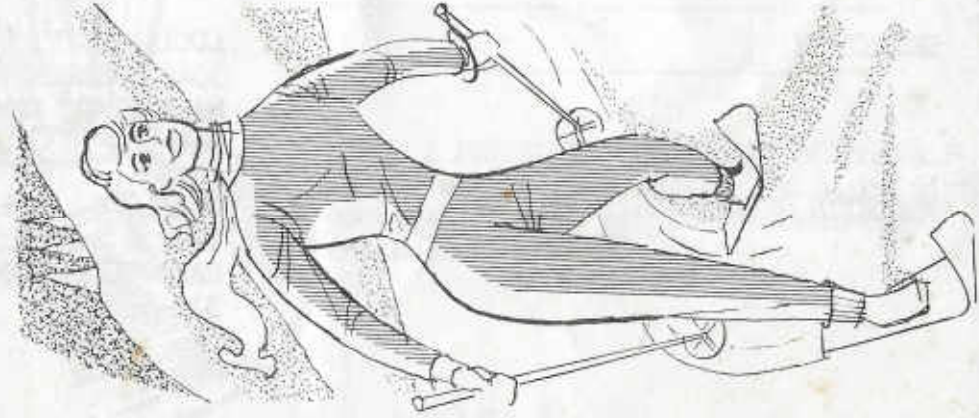


H. O. A. C. G. A.
DONALD E. KIME
BULLETIN SECRETARY
1202 W. 4th ST.
HAYSVILLE, KANSAS 67060



February 1982
S M T W T F S
1 2 3 4 5 6
7 8 9 10 11 12 13
14 15 16 17 18 19 20
21 22 23 24 25 26 27
28



FIRST CLASS



Heart of America Carnival Glass Association, INC.

MEMBERSHIP JUNE TO JUNE
\$10.00 PER COUPLE OR SINGLE

PUBLISHED 15th OF
EACH MONTH

PRESIDENT:

GEORGE O. MCGREW JR.
6800 WOODWARD
OVERLAND PARK, KANSAS 66204
913-262-8822

VICE PRESIDENT:

GEORGE BOLLES
5204 CATALINA
SHAWNEE MISSION, KANSAS 66205
913-432-5438

TREASURER:

ELIZABETH BOLLES
5204 CATALINA
SHAWNEE MISSION, KANSAS 66205
913-432-5438

SECRETARY:

LUCILE BRITT
3048 TAMARAK DRIVE
MANHATTAN, KANSAS 66502
913-539-1933

BULLETIN SECRETARY:

DONALD E. KIME
1202 W 4th St.
HAYSVILLE, KANSAS 67060
316-524-3123

January Minutes of H.O.A.C.G.A.

The January meeting was held at the home of M/M Cooley Miller and was well attended. Lunch was served and then the meeting was called to order by President McGrew at 2/PM. There was no Secretary report since there was no December meeting.

The Treasurers report was given stating a balance on hand as of 1-22-82 of \$16,705.97. The report was approved as read and is to be placed on file for audit.

President McGrew asked those attending what their thoughts were on the brochure for the ICE BLUE CORN VASE received in the January bulletin. All comments were favorable.

Mr. Bob Grissom reported that there were only ten water sets photos left remaining to be acquired for the first series in the notebook. He has sent several requests out for these and is confident that they will be filled in time for printing.

The Souvenir Chairman, Cooley Miller, reported that the 1982 Corn Vase is becoming very exciting issue with Mr. Fenton. Mr. Miller also read the letter from Mr. Fenton accepting the clubs invitation to attend this years convention.

Convention up date-Janet Zahn reported that all is going well with the Convention planning with good savings on some items and excellent help on the committee. It was suggested that there be a \$3.00 charge for the Chuckwagon Saturday night to help deter expenses. It was further suggested that no charge be made to those purchasing a Souvenir. This was put in a form of a motion and seconded. The motion passed with a majority vote.

President McGrew asked for a volunteer to be room display Chairperson. Lillian Clampitt willing accepted. Again this year the top five displays will receive monetary awards of \$20-40-60-80-100.

Mrs. Marge Miller graciously accepted the task of forming a nominating committee this year.

President McGrew showed an example of a certificate of appreciation for all those contributing articles of Special Interest for the Bulletin. A motion was made and seconded to have a special award for special or unusual articles. The members awarded and to whom they would be given would be decided by the Board. There would be no consecutive winners

year to year. The motion carried.

The convention itenary will be published in the March Bulletin.

The meeting was then adjourned to dispose of the remaining 1980 Ice Green hatpin holders that were unsold. A total of 31 were broken with the majority of these being of inferior quality.

The February meeting will be at the Holiday Inn, Overland Park, February 28, 1982 at 2PM.

Linda McGrew Acting Secretary

George O. McGrew President

The following poem was sent to me by one of our members and I think it very appropriate to include it at this time. It holds within its words what we should all strive to accomplish in our everyday lives.

NEW YEAR'S PRAYER

A whole new year is mine
today...
May I be wiser, Lord, I pray.

I'd strengthen friendships,
old and true,
And learn to cherish new one,
too;
To keep on learning and to
grow
A little better as I go.

To cast aside each grudge and
grief,
And hold fast to a firm belief
That life is joyous, gracious,
good,
When lived in terms of
brotherhood.

To welcome fun, and play a
while,
To lighten work with a happy
smile.

To thank the Lord and every
day

Remember Him, and kneel to
pray
In gratitude for strength and
health
And blessings which are all
my wealth.

This year's a gift from God to
me
To spend, or use, or set me
free...

A whole new year is mine
today...
May I be wiser, Lord, I pray.

RARE AND UNUSUAL PIECES NEEDED

Members who may be attending the H.O.A.C.G.A. convention, if you have rare or unusual Northwood pieces, you might bring them so that Mr. Heacock may photograph them for inclusion in his upcoming book on Northwood.

+PHOTOGRAPHER NEEDED+

If anyone who is attending the convention in April and has a 35 mm camera and would like to take pictures of the convention, please contact Mr. George McGrew, 6800 Woodward, Overland Park, Kansas 66204 or call him at this number 913-262-8822.

MUGS HAVE ARRIVED

At last the little table favor mugs have arrived that we were short for the 1981 convention. We have some extra ones and they will be sold on a first come first served basis. ONLY ONE PER MEMBERSHIP. Please send \$10.00 each plus \$2.00 postage. Payment should be sent to Lucile Britt, 3048 Tamarak Drive, Manhattan, Kansas 66502. Please allow 4 to 6 weeks for delivery. These are the little vaseline mugs used as table favors for the convention banquet last year. We are sorry those of you who attended the convention banquet had to wait so long.

1982 DISPLAY AWARDS

Again this year we will be awarding to the top 5 winners of the window displays at our convention. Each will be awarded a small trophy who bring a display. The top 5 will be awarded monetary amounts as follows: 1st-\$100 2nd-\$80 3rd-\$60 4th-\$40 and 5th-\$20. We all look forward to seeing everyones display and remember yours could be the winner of one of these prizes. Start thinking now on your display.

MATERIAL NEEDED

Faye Ronk, our Historian, needs articles from the last three years for the scrapbook in order to bring them up to date. Auction brochures, price lists, newspaper articles and pertinent information. Please send them to Faye Ronk, 5234 Outlook, Mission, Kansas 66202 as soon as possible so she can have them ready for the convention.

1982-83 MEMBERSHIP CARDS

For those of you who are sending in your 1982-83 dues your new membership cards will not be sent until the first part of May. We are making up a new roster as you know and to save postage we will be sending you your roster as well as the new cards at that time. Due to the high cost of postage we have to make savings where we can.

ANOTHER REMINDER

Please folks send your articles, for sales and wants to the bulletin Secretary direct and not to one of the other officers. This only delays your material and may not get into the months bulletin that you want it to.

1981 SOUVENIR STILL AVAILABLE"

Remember we still have some of the 1981 red Candle Lamps available. If you would like to have one please send \$75.00 plus \$3.00 postage for each lamp. Please send to Lucile Britt, 3048 Tamarak Drive, Manhattan, Kansas 66502.

EDUCATIONAL TUMBLER SERIES



THE VERY RARE FLUTE AND CANE TUMBLERS

To the best of my knowledge, the snapshot above shows the only two "Flute and Cane" tumblers that have ever been reported. This fine pattern was made by the Imperial Glass Company of Belaire, Ohio. Mrs. Hartung describes the "Flute and Cane" pitcher in her book 9-page 118. She does not list the tumblers in her price guide, so evidently she has never seen one. Mr. Owens fine tumbler book does not include this tumbler. Mrs. Kamm describes the "Flute and Cane" pattern in her second book of her pattern glass series. She does not mention a tumbler nor does she state the maker of the pattern.

We are including in this article a photostatic copy of a page from an old Imperial catalog. Notice that the pieces were made in rubigold only. Rubygold was their term for a very deep marigold. Also note that the tumbler was made in two distinct sizes--both a 9 oz. and a 12 oz. size. This sheet also shows the two sizes of "Star and File" tumblers, in which was described in one of our earlier tumbler articles. This old material was particularly interesting to me because it shows "Star and File" as being made in a goblet and cordial, as well as the wine. I have never seen an iridised "Star and File" goblet or cordial. You can also see that the "Four-Seventy-Four" pattern was made in a goblet, wine and cordial. The sheet also states that the little 6 inch plates, that you only seldom see, were made to fit under the tumblers, goblet, sherberts,

sundaes and jellies.

I can only describe the "Flute and Cane" tumblers as being beautiful, desirable and extremely rare. The nice lady that owns these two tumblers, says that they remind her of beautiful diamond bracelets. I have tried in vain for a number of years to purchase these tumblers, offering what I considered a very handsome price. One bright note however-- she says if she ever decides to sell them that I will have first chance. It has been a great thrill for me to be able to see these tumblers, photograph them and know that they really exist. It has also been exceptionally gratifying for me to write this story on the "Flute and Cane" tumblers. Watch for one of these on your carnival glass hunting trips. I am sure there are at least a few more out there somewhere. Perhaps this article might help uncover one from some cupboard, attic or box that is packed away.

This is No. 49 in our carnival glass tumblers series. Next month we will discuss another one of the many beautiful carnival glass tumblers.

John & Lucile Britt

Made Only in Rubigold Iridescent Glass

Page 110

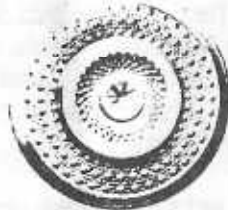
See pages 101 and 106 for pitchers to match tumblers and goblets.



M666B. 4 1/2 inch Jelly or Fruit Salad



M666L. 3 1/2 inch Sherbet



M666. 6 inch Plate

M666. 6 inch Plate
Fits under:
4 1/2 inch Jelly or Fruit Salad
3 1/2 inch Sherbet
12 oz. Ice Tea Tumbler
9 oz. Table Tumbler



M666. 12 oz. Ice Tea



M666. 9 oz. Table Tumbler

M612. 6 inch Plate
Fits under:
Jelly or Fruit Salad
12 oz. Ice Tea Tumbler
10 oz. Table Tumbler
9 oz. Goblet
3 1/4 inch Low Sherbet
3 1/4 inch Tall Sundae



M612. 6 inch Plate



M612B. 4 1/2 inch Jelly or Fruit Salad



M612. 12 oz. Ice Tea



M612. 10 oz. Table Tumbler



M612. 9 oz. Goblet



M612. 2 oz. Wine



M612. 1 oz. Cordial



M612L. 3 1/4 inch Low Sherbet



M612T. 3 1/4 inch Tall Sundae



M474. 6 oz. Custard



M474. 4 inch Sherbet



M474. 3/4 oz. Cordial



M474. 2 oz. Wine



M474. 8 oz. Goblet



M474. 16 oz. Mug



M474. 1 oz. Cordial



M474. 10 oz. Goblet



M474. 2 oz. Wine

Illustrations by Fred

Imperial Glassware

Catalog No. 300



'FENTON'S FERN' --- AN EXTREMELY RARE BOWL

This pretty bowl is in cobalt blue and is the only example of this pattern that I have ever seen. It is owned by Mrs. Bernice Allen of Hopewell, Virginia. The photograph was taken at the I.C.G.A. convention at La Crosse, Wisconsin last summer. Mrs. Allen also had it on display at the H.O.A.C.G.A. convention. I thought perhaps it might be of value to show it here, so that if one of our many new carnival glass collectors should see one sometime that they wouldn't pass it up for just another bowl.

This pattern is shown in Mrs. Marion Hartung's book No. 10--page 93. In case the pattern does not show up too well from our photograph, I am including Mrs. Hartung's below



FENTON'S FERN

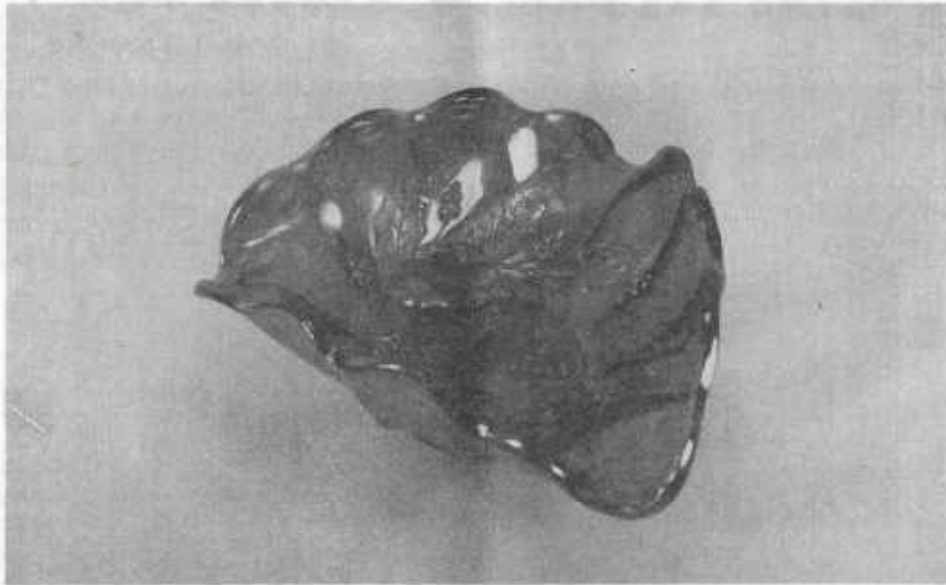
Carnival Cameos

BY DONALD MOORE



INVERTED STRAWBERRY - This is a Cambridge pattern. The large compote shown here in purple is signed "NEAR CUT." The small one is a bit of a mystery. It is blue and is unsigned. While others no doubt exist, this is the only small compote in this pattern that I have heard of. It is therefore unlikely this was intended to be a stemmed berry set with six small bowls and a large one making up the set.

In clear pressed glass this small compote was made as a child's punch set and came with six punch cups. This miniature set was reproduced in red Carnival by the Lincoln Land Carnival Glass Club as their 1979 souvenir. It is my feeling that the small piece shown here was experimental and never put into production. I have had it for ten years, and I feel certain it is old.



HOLLY SPRIG (WHIRL)

Known as both Holly Sprig and holly Whirl this popular Millersburg pattern is one easily recognized.

The design is much like the Berry Wreath patterns in that it forms a loose square around the middle of the bowl, with four sprigs of holly and berries. The leaves are finely veined and stippled, like most Millersburg flora patterns and each cluster has five berries.

Shapes include 7" round and ruffled bowls, 9" and 10" round and ruffled bowls, a rare 5" sauce, a two handled bon bon deeply cupped, a two handled card tray which is flattened and can be found in a variant with an extra leaf in the center and Isaac Benesch advertising on the base exterior, a rare one-handed spade shaped nappy and the rare 7" tri cornered bowl shown. Most shapes are found with a wide panel exterior, however 8", 9" and 10" bowls are found with a near-cut pattern called Near Cut Wreath.

The advertising card tray is found only in marigold and the 5" deep

sauce in amethyst and marigold only, however the other shapes can be found in marigold, green and amethyst. A blue Holly Sprig item would be a treasure, but I have not heard of one. And while I have not seen them, two rare Holly Sprig 7" compotes have been reported in marigold. These are used on the same compote design as the Millersburg Strawberry pattern. They are, of course, very rare.

Millersburg holly Sprig is often seen and makes a good collectable for the lover of fine radium finish glass. Often the jewellers bead is present indicating a quality product.

WELCOME NEW MEMBERS

- M/M David Darby, Norborne, Mo
- M/M Alan Oliver, Wichita, Ks
- M/M Earl Van Dorien, Wichita, Ks
- M/M W. T. Harrell, Borger Tx
- Yolanda V. Moody, Grandson, Switzerland
- M/M Fred West, Redlands, Ca
- M/M W. H. Brunlow, Paducah, Ky
- Linda Rivers, Merritt Island, Fl
- M/M Lawrence Hartnell, Stayner, Ontario, Canada

The regular bi-monthly meeting of the New England Carnival Glass Assoc. was held January 17th at the American Motor Lodge in Sturbridge, Ma. Despite the ice, snow and zero weather 35 members attended.

Our new President, Dick Wetherbee, presided at the business meeting. Much discussion was held concerning the question of a display in conjunction with a local antique show, or a mini-convention, to educate people about our lovely glass.

After an interesting "Show and Tell" with hearts and /or flowers as its theme, delicious refreshments provided by Shirley Gallerani and her committee, were enjoyed by all.

Eleanor Hart
New England Carnival
Glass Assoc.

GOOD BYE 1981 - HELLO 1982

The year 1981 was such a good one I truly felt quite sad to have it go away as the seconds were counted off to usher in 1982. It was like losing a favorite friend or a dear relative. The memories of all the carnival conventions and the nice people we have met off and on all year will always be kept close to our hearts. Now after a few days of the New Year we know we must look forward to a set of new memories so sadness must be replaced by hope for lots of happy days again.

We do admit 1981 gave losses that really hurt by taking away dear carnival friends like Dick Loechinger of Dayton, Ohio and the sad call came from Ken Osbon of Gresham, Oregon that Marcie had died on Christmas eve. Our hearts went out to them at such a loss during holidays. It always seems worse. We recall losing Carrie Roebuck of North Carolina too and I hear several others not known personally or being reported. These nice people will always be remembered. They have a special place in our scrapbook so will in a sense still be with us at the conventions of I.C.G.A. Anyone wishing an account put in the scrapbook please send it. We feel it a good way to keep the departed ones close to our hearts.

Now lets look ahead to some nice events coming up soon. The auction at St. Louis for January 9th is a good way to start off the New Year. We surely hope for good weather and no doubt a sizable crowd will gather for it despite any kind of weather. Carnival people are not easily discouraged then a good auction comes along. Then next on the list is one that will create great interest to all the Millersburg collectors especially. Everyone knows the Jack Wilsons have rare and lovely Millersburg Carnival so this will be offered February 27th at Strongsville, Ohio. Tom Burns and Bill Richards work well together at auctions so this promises something no one will want to miss. Another time to wish for reasonable Ohio weather too.

We heard from so many during holidays and that surely made the season extra special. The high cost of postage has to be considered any more. The mailing of 2 or 3 hundred cards does count up fast. Yet what else can one do as cheaply to send a card and a thought during holidays? We appreciate every card we recieved but do not blame anyone for not sending. The postal service seems to feel there is no end to what the first class mail can absorb. (Thats two things I did not like in 1981-they raised first class not once but twice).

A nice little thought came in a New Year card that we want to share with you: "Now let us believe in the New Year-untouched and full of things that have never been"-We can hope for many good days as the New Year unfolds ahead. Our sincere wish it will bring the best of health and happiness to all.

Grace & Byron Rinehart
Charleston, W. Va.

Dear Members and Friends in the Carnival Glass World----

I write this message to you with a heavy heart and a feeling of a very great loss. To those of you who do not know, my loving wife passed away on December 24, 1981 at 1:00 P.M.

All of us will miss her. I loved her dearly.

The concerned feelings and sincere show of sympathy for my family and myself has touched us too deeply to say. So, I will only say to all, "Thank you" from me and mine.

My Sincere Thanks,

Ken Osbon and Family
Gresham, Oregon

The Air Capital Carnival Glass Club met at the home of Wilma and Francis Elder, January 10, 1982. 12 members were present and a guest, Alan Oliver. Alan and his wife Dana joined our club. The program was given by our President, Roland Kuhn. He brought mugs and tumblers to match and entitled his talk "Look Alikes"

Donald E. Kime
Secretary

FINE SELECTION OF GLASS FINDS NEW HOMES

The following is a partial list of prices received at the Woody Auction which was held January 9, 1982. We are most grateful that a list of these prices have been sent to us to be put in the bulletin.

Morning Glory Tankard pitcher M 4200
 Millersburg 9" compote Aster or Zinnia G 1300
 Millersburg 3" mini compote Olympia G 700
 Millersburg Acorn jelly compote 6" A 900
 Millersburg Wildflower jelly compote 6" A 500
 Millersburg Thistle compote 7 1/2" A 425
 Millersburg Morning Glory Tankard pitcher A 6700
 Tiger Lily water set 7 pc M 130
 Millersburg Multi Fruit punch bowl A 350
 Peoples Vase B 5000
 Millersburg Multi Fruits pitcher M 4400
 Millersburg Rose Column vase A 275
 Millersburg Rose Column vase G 575
 Millersburg Multi Fruits pitcher G 2400
 Millersburg Multi Fruits tumbler G 700
 Gay Nineties pitcher A 2400
 Gay Nineties tumblers A 450
 N Acorn Burrs 7 pc water set P 520
 N Acorn Burrs 9 pc punch set P 425
 N Acorn Burrs punch set 8 pc P 475
 Millersburg Diamonds water set 5 tumblers M 150
 N Acorn Burrs covered butter dish P 190
 Millersburg Trout & Fly bowl A 240
 Millersburg Gay Nineties pitcher G 5500
 Millersburg Holly Sprig 3" X 9" scalloped rim A 100
 Butterfly & Plume 7 pc water set A 275
 Birmingham Age Herald bowl A 450
 Millersburg Hobnail pitcher A 550
 Bouquet pitcher 3 tumblers B 525
 Handpainted Cherry 7 pc water set B 325
 Chrysanthemum bowl B 160
 Diamond Lace 7 pc water set P 450
 One Eyed Elks bowl A 350
 Fashion punch bowl, base 6 cups M 200
 Fashion 2 pc punch bowl M 100
 Floral & Grape pitcher B 300
 Fluffy Peacock pitcher M 375
 Floral & Grape 7 pc water set W 450
 Millersburg Nautilus signed Northwood A 120

Floral & Grape water pitcher B 200
 Floral & Grape 7 pc water set M 125
 Fluffy Peacock water set A 450
 Dresser Tray G/C A 150
 N G/C femery P 250
 N G/G master punch bowl 8 cups 1000
 N G/C medium size punch bowl 6 cups G 700
 N G/C 7 pc water set P 360
 G/C 7 pc water set M 275
 G/C sweetmeat compote M 700
 G/C humidior stippled M 190
 Australian Emu large compote P 140
 G/C 7 pc berry set P 190
 G/C candle lamp P 200
 G/C covered compote P 200
 G/C large open compote P 260
 G/C cookie jar stippled M 130
 G/C banana bowl B 375
 G/C table set P 170
 G/C orange bowl P 230
 G/C tankard tumblers P 475
 G/C Candle lamp G 400
 N G/C 7 pc water set P 350
 Greek Key pitcher & tumbler P 525
 N G/C cookie jar P 275
 Poinsettia bowl 3 ftd A 140
 Panelled Dandelion 7 pc water set G 300
 Good Luck bowl W 200
 Good Luck bowl P 110
 Imperial Grape wine decanter 8 wines P 285
 N G/C plate P 110
 Grape & Gothic Arch water set G 375
 Lattice & Grape 7 pc water set M 190
 Peacock & Urn 7 pc ice cream set P 375
 Grape Arbor water set M 250
 God & Home water set B 1300
 Wishbone pitcher 3 tumblers P 1750
 Jewelled Heart pitcher 5 tumblers M 800
 Inverted Strawberry pitcher 5 tumblers A 375
 Inverted Strawberry pitcher 4 tumblers M 1400
 Peacock at Fountain compote W 230
 Orange Tree punch set W 300
 Footed Orange Tree water set 7 pc M 325
 Fluffy Peacock pitcher A 275
 Orange Tree breakfast set A 60
 Millersburg Diamond water set A 350
 Orange Tree Orchard 7 pc water set 380
 Oriental Poppy tankard & 2 tumblers M 240
 N Raspberry milk pitcher A 190
 Oriental Poppy 6 pc water set P 390
 Peacock at Fountain 7 pc water set B 450
 Peacock at Fountain covered sugar W 120
 Peacock at Fountain 6 pc water set 300
 Tornado vase P 120
 Vase R 150
 Ski Star 11" bowl M 120
 Stork & Rushes 7 pc water set M 130
 N G/C 7 pc water set G 425
 Windmill pitcher M 110
 Starflower pitcher B 675
 Fieldflower pitcher AMB 200
 Chatelaine pitcher P base chip repaired 240
 Fluffy Peacock pitcher M 220
 Rising Sun pitcher M 120
 H.O.A.C.G.A. whimsey pitcher R 120
 Acorn Burrs pitcher M 250
 N G/C medium punch bowl 9 cups M 410
 Octagon 7 pc water set M 190
 Orange Tree punch bowl, base & 5 cups B 160
 Wreath of Roses punch bowl & base B 350
 Wreath of Roses punch cup B 30

WINTER MUSINGS

The January weather hit us like a cold slap to the face with its 13 below zero and the howling winds to make it even worse. We were kept close indoors listening to the furnace as it clocked away counting up the big gas bill, however we were grateful to know it was keeping us warm while many thousands farther south were not so fortunate. It hurt to see such storms at Dallas, Texas and Atlanta, Georgia not to even mention the damaged fruits and vegetables in Florida.

We sure was sorry to miss the St. Louis auction but the Raymond Heeleys of Painesville, Ohio were kind enough to send a partial list on prices. We felt those prices sounded real good for a winter sale. Now the lovely brochure of Jack Wilsons Millersburg Carnival came to tempt our "Carnival buds" taste from now on. We know everyone will want to see it-if only Mother Nature doesn't take a cantankerous spell about then. She doesn't seem to be in a good mood this winter and is trying to go down in history as our worst weather for many many long years.

As usual we do a lot of remembering while being housed up and nothing better to think of than carnival and the friends we've made through the twenty or so years we've been collecting. We have collected more friends I think than carnival and we treasure every one as we do the glassware. We began to recall several we don't see any more at all and some very seldom. A few that come to our minds the older collectors will also recall and perhaps many of the newer ones will not remember at all. We would like them all to know they are very much missed and not forgotten by us and we would doubt by others who knew them back when they were regulars at the conventions.

Of course ones like Rose Presznick, Dick Clair, Thad Klutts, Ed Gaida and the Hugh Pfaffs are gone forever except in memory. Also Dick Loechinger, Marcie Osbon and Carrie Roebuck so recently. Some we are missing entirely or seldom see or hear about are Thrawleys, Geisler, Whites, Wolfes, Estils, Thompsons, Jamisons, Lucys, Ripleys, Burks, Bottins, Archers, Crawl, Ormsbee-Clarks, the Dr. Burches, Hollingers used to have such lovely carnival but after his death we never saw Grace again. The Rex Lyons too are missed at conventions but they are active with their auctions. Wishards were not with us anywhere last year. Oh, so many we can not mention each one but we would be happy to welcome them all back-Anyway we do not forget we all once enjoyed the times we were together. It helped a lot to go down memory lane and

FOR SALE

Osteen & Mary Lou Smith, Box 403, Corinth, Mi 38834 PH 601-286-3192

V EI Concave Diamond tumbler mint rare 300

Bill Edwards, 423 N. Main, Rushville, Ind 46173 PH 938-4221

M GI Lion Bowl 75
M EI Jelly Jar w/lid rare 60
AO EI Dandelion mug (internal crack) 250
W EI Hammered Bell 90
AM EI Pansey oval tray Imperial 100
B EI Grape Arbor hat 125

LaVem White, Grafton, Ia 50440 PH 515-748-2923 after 5 PM -

B EI Painted Cherry tumblers 3 ea 18
M EI Grape Arbor tumblers 2 ea 20
G EI Singing Birds tumblers 2 ea 38
M EI Panter berry dish 35
B EI Maple Leaf spooner 45
M EI Lustre Rose covered butter 50

Mrs. Ola Shoom, 182 Chelsea Rd, Kingston Ontario, Canada K7M 3Y8
PH 613-389-5293

G EI Wishbone epergne base (N) 75
A EI Diving Dolphins rosebowl Scroll Embossed int some roughness feet (H-6-60) 125
P EI G/C bowl (N) Basketweave ext 60
A EI Three Fruits spatula ftd bowl Meander ext pattern 50
M EI LBJ hat ashtray 30
M EI Hobnail Soda Cold cuspidor 35
C EI Frosted Block square bowl marked made in USA 35
AO EI Peacock on the Fence bowl 1 flute missing 100

Jennifer Jenkins, 7909 Kimberly Ave, Bakersfield, Ca 93308 PH 805-399-1024 after 5:30PM on weekdays or before 7:30AM

W	EI	Persian Garden 2 pc fruit bowl	225
W	EI	Constellation w/Seafoam ext compote	50
M	EI	G/C w/Persian Medallion orange bowl	80
B	EI	Stork & Rushes tumbler	25
A	EI	G/C tankard tumbler (N)	70
W	EI	Peacock at Um 8 1/2 bowl	50
A	EI	Holly & Berry 9" bowl	35
B	EI	Dahlia & Peacock 7" bowl	50

Mary Herren, 520 S Berry, Morganfield, Ky 42437 PH 502-389-3121 after 5PM

SB	LI	Zippered Loop lamp	275
A	EI	Millersburg Peacock 6" fluted dish	35
G	EI	Millersburg Cosmos 6" fluted dish	28
G	EI	Millersburg Peacock Tail Variet compote	35
B	GI	Large Footed Orange bowl Orange Tree	75
B	EI	Rose Show plate two tiny nicks at base	155
M	EI	Peach & Pear banana base chip	45

Helen Nadeau, 18 Thomas Olney Common, Providence, R I 02904 PH 521-4581 after 5PM

P	EI	Diamond Lace water set 7 pc	375
P	EI	Beaded Shell mug	75
P	EI	Diamond Lace tumbler	50
M	EI	N Grape dresser tray	145
G	EI	Primrose bowl	75
PO	EI	Single Flower 9" bowl	30
PO	EI	Stipple Flower bowl	30
M	EI	Stag & Holly bowl 11 1/2"	105
P	EI	Maple Leaf ice cream ftd large bowl	85
M	EI	Grape Arbor fruit bowl	80

20

Betty Klutts, 3800 N. W. 24th St, Oklahoma City, Ok 73107 PH 405-946-7497

DM	EI	Horse Medallion plate 7 1/2"	85
DM	EI	G/C plate basket weave back 9"	85

Guy Hulett, Jr Box 363, Antrim, N H 03440 PH 603-588-6705 after 5 PM

P	EI	Fishermans mug	75
M	EI	Orange Tree mug	25
B	EI	Orange Tree shaving mug	40
A	EI	G/C tumblers one good three with small flicks all for	50

John Resnik, 4290 Jackson Ave, Culver City, Ca 90230 PH 213-839-1588

M	EI	Good Luck bowl pie crust edge	60
M	GI	Dragon & Strawberry bowl collar base ice cream shape	175
P	EI	G/C sweet neat compote	225
M	EI	G/C breakfast sugar & creamer	75
M	EI	Garland rosebowl dark color	45
W	EI	Frosted Block rose bowl	45
M	EI	G/C dresser tray	150
P	EI	G/C dresser tray chip at edge	55
M	EI	Imperial Grape decanter & stopper	65
G	EI	Inverted Strawberry 7" bowl signed Near Cut	45

Harm Westerhuis, RR 1 Box 31, Platte, S D 57369 PH 605-337-3631

P	EI	Imperial Grape decanter no stopper	85
G	EI	Imperial Grape decanter no stopper	60
M	EI	Imperial Grape decanter no stopper	45
M	EI	Fashion punch set 8 pc	150
M	EI	Millersburg Flute punch bowl, base & 1 cup	300
M	EI	Mary Ann vase	45
M	EI	Illinois Daisy covered cookie or cracker jar	45
P	EI	G/C banana bowl	150
G	EI	G/C butter bowl top	65
M	EI	G/C butter bowl top	45

21

Bernie Mahm, 1001 Rock Rd, DeSoto, Mo 63020 PH 314-586-6226

P EI	Basket N	75
B EI	Blackberry miniature compote 2 sm chips on bottom	65
M EI	Sunflower spatula ftd bowl sm rim flake	27
G GI	Stippled Rays compote tulip style	60
M EI	Coin Spot compote	15
PM EI	Acorn Burrs berry set N	585
P EI	Acorn Burrs punch bowl base N	200
A EI	G/C 3 ftd plate	65
PM EI	Fleur DeLis Millersburg 9" ftd bowl	90

Joseph Mello, 535 Fish Rd, Tiverton, R I 02878 PH 401-624-2174

A EI	G/C creamer to table set sm indentation at top in mold	125
G EI	Stippled Rays compote N	20
A EI	G/C tumblers 6 ea	20
M EI	Question Mark bon bon	15
DM EI	Scroll Embossed bowl file ext	25
M EI	Imperial Grape tumbler	15
M EI	Holly panelled bon bon ftd N	30
M EI	Octagon tumbler	15
M EI	Grape & Gothic sm berry	12
M EI	Fish Scales & Beads sm bowl	15

Lee Briix, Rt 1 Box 68, Hennessey, Ok 73742 PH 405-853-2276 after 5PM

P EI	G/C master berry bowl large crack (N)	18
M EI	Stork & Rushes butter dish top only	55
M EI	Fieldflower tumbler	25
A EI	Greek Key tumbler shelf piece (N)	8
M EI	Feathered Arrow English bowl	24
M EI	Enameled Crocus (Freesia) tumbler	16
M EI	Northwood Flute berry bowl (N)	20
M EI	Coin Dot bowl	15
M EI	Waffle Block punch cups 4 ea	10
B EI	Apple Tree tumbler cracked	4

George McGrew Jr., 6800 Woodward, Overland Park, Ks 66204 PH 913-262-8822

A EI	Peacock at the Fountain 7 pc water set	550
A EI	G/C 7 pc water set	375
M EI	Peacock & Grape bowl	35
G EI	Peacock & Grape bowl	45
V EI	Peacock & Grape bowl	160
B EI	H.O.A.C.G.A. candle lamp 1 of 4 made in this color	350

Robert Schneider, 10173 Marshall Pond Rd, Burke, Va 20215 PH 713-250-8807

A EI	Pineapple rose bowl	55
M EI	Lustre Rose table set chipped top sugar lid	100
B EI	Peacock & Grape bowl	40
P EI	Embroidered Mums bowl	55
M EI	Hobnail rose bowl mfgs heat chk in side	90
A GI	Peach & Pear 12 1/2 banana boat	80
G EI	Stag & Holly 8" spatula ftd bowl	80
A EI	Diamond Lace bowl	65
B EI	Stag & holly 9 1/2 bowl ftd	100
P EI	Grape Delight 6 ftd nut bowl some wear	50

SASE for list of old carnival

Mrs. Clarence Osterbuhr, 802 Hackberry, Garden City, Ks 67846 PH 316-275-5615

M EI	Thistle & Thorn creamer	18
M EI	Split Diamond creamer	8
P GI	Singing Birds N creamer rim pinpoint nick	45
P EI	Beaded Shell creamer	60
M EI	Orange Tree mug	20
G EI	Butterfly & Fern tumbler chip under base	15
P EI	Acorn Burrs N tumbler chips on several burrs	20
M	Grapevine Lattice tumblers 6 all for	90
G GI	Imperial Grape decanter stopper mint decanter has chip	30
P EI	Fishermans mug base chip	20

Diane Wetherbee, 847 Stafford St., Rochdale, Ma 01542 PH 617-892-4420

M EI	G/C Meander back 9" ftd bowl	25
M EI	Question Marks 2 handled bon bon	12
P EI	Heavy Grape 10 1/2 master berry bowl radiant	60
B EI	Fentons open Lace edge banana boat whimsy basket	27
M EI	Chrysanthemum & Windmill 10 1/2 ftd bowl	42
P EI	Double Stem Rose 9" ftd bowl radium finish	38
G EI	Fine Rib (N) 10" vase	15
M EI	Vintage compote 6 1/2 x 6 1/2	37
P EI	Nippon (N) 9" bowl basketweave back	52
G EI	Captive Rose 9 1/2 plate	118

Mary Kesterson, 3020 Mesa Rd, Willow Park, Tx 76086 PH 817-441-8410

M EI	Tornado Vase	150
M EI	Dandelion mug	135
PM GI	Palm Beach tumblers 2 ea	55
G EI	Inverted Feather cracker jar	195
M EI	Horse Medallion plate 8"	165
M EI	Iris Goblet	95
P EI	G/C dresser tray	250
B EI	Stag & Holly bowl ftd 11"	175
W EI	Apple Blossom Twig plate	185
IG EI	Corn Vase	250

Wayland Billingsley, 206 N Union St., Appleton, Wi 54911 PH 414-733-3102

M EI	Windmill milk pitcher	125
CLM EI	Star Medallion milk pitcher sm chip on base	25
CLM EI	Frosted Block milk pitcher	45
CLM EI	Poinsettia Milk pitcher rough finish top rim spot on bottom of base	90
CLM EI	Frosted Block rose bowl	65
M EI	Stemmed Ladies spittoon	65
M EI	Apple Blossom 7" bowl	25
B EI	Poppy show plate	335
A EI	Floral & Grape pitcher 6 tumblers	325
P EI	Strawberry plate	100

24

Gil Corriveau, Box 5, Sturbridge, Ma 01566 PH 617-347-3304 days
PH 617-347-9930 nights

G EI	G/C hatpin holder	150
P EI	Wishbone ftd bowl	50
P EI	Singing Birds mug	55
P EI	G/C hatpin holder	150
P EI	Acorn Burr punch set 8 pc	650
G EI	Singing Birds tumblers ea	30
M EI	G/C powder jar N	45
M EI	Garland rose bowl	45
Pearl EI	Grape & Gothic Arch N tumbler	45
M EI	Holly 9" plate	55

Omer E. Sweeney, 140 N Tropical Trail Lot 6, Merritt Island Fl 32952
PH 305-453-6237

P EI	Diamond pitcher	150
M EI	Springtime pitcher (N)	325
M EI	Imperial Grape pitcher	80
M EI	Acorn Burr pitcher (N)	300
M EI	Grape Arbor 7 pc water set	410
M EI	Fentonia tumbler 6 ea	45
G EI	Greek Key tumbler (N)	105
G EI	N/G punch cup (N)	25
M EI	Little Fishes lg ftd bowl 10"	140
G EI	Octogonal top bowl Greek Key Ext (N)	40

Linda Rivers, 140 N Tropical Trail Lot 6, Merritt Island Fl 32952
PH 305-453-6237

M EI	Star Light elect shade	35
M EI	Acorn Burr bowl (N)	20
M EI	N/G banana bowl	145
M EI	N/G tobacco humidor	255
M EI	Kitten 4 sided bowl	105
P EI	Good Luck bowl N	130
P EI	Leaf & Beads (N) int pat	60
M EI	Greek Key elect light shade 8 ea	50
AO EI	Daisy & Drape vase (N)	350

25

WANTS

Chris Hawkins, 1340 SR 206, Brinkhaven, Oh 43006

- DM Millersburg Diamond pitcher
- A Millersburg Cherries sauce
- M Millersburg Seaweed bowl
- M Millersburg Zig Zag bowl
- Any Millersburg crystal pieces

Mrs. Ola Shoom, 182 Chelsea Rd, Kingston Ontario, Canada K7M 3Y8
PH 613-389-5293

- M Maple Leaf butter base
- W Palm Beach sugar bottom
- W Palm Beach creamer
- M Imperial Grape stopper for decanter
- M Flute creamer (N)
- P Imperial Grape tumbler

John Stewart, 99 Aster Circle, Weymouth, Ma 02188 PH 617-337-1304

- B Fine Cut & Roses rose bowl
- W Fine Cut & Roses rose bowl
- Teal Northwood Basket
- V Northwood Basket
- IB Northwood Basket
- IGO Northwood Basket
- IB Dandelion Knights Timplar mug

Harm Westerhuis, RR 1 Box 31, Platte, S D 57369 PH 605-337-3631

- M Stork & Rushes ouch bowl
- M Many Fruits punch bowl
- W Orange Tree punch bowl

Joseph Mello, 535 Fish Rd, Tiverton, R I 02878 PH 401-624-2174

- G Horses Heads 3 ftd bowl
- M Horses Heads plate
- B Horses Heads plate
- PO Petals bowl
- PO Folding Fan
- M Acorn Burr punch bowl top only
- B Panther bowl sm scallop edge only

Lee Briix, Rt 1 Box 68, Hennessey, Ok 73742 PH 405-853-2276 after 5 PM

- G Bottom for Vintage Epergne
- M Stopper for Imperial Grape decanter
- A Lid for Vintage powder jar
- M Stopper for G/C perfume bottle
- Would like to buy damaged
- B God & Home tumbler
- M Jeweled Heart tumbler

Robert Livingston, 987 Corbin Ct., Westerville, Oh 43081 PH 614-890-3441

- M Octagon decanter stopper
- M Octagon wine glasses 5 or 6
- M Lustre Rose creamer
- M Lustre Rose spooner
- M Tiger Lily tumblers
- PO Ski Star master berry bowl
- PO Ski Star small berry bowls 4

Howard Manderville, 1023 Rd 60, Pasco, Wa 99301 PH 500-547-3543

- M Lid for marmalade jar
- A Lid for G/C powder jar (N)
- B Lid for Orange Tree powder jar
- M Bottom for Peacock at the Fountain butter dish (N)

Mary Kesterson, 3020 Mesa Rd, Willow Park, Tx 76086 PH 817-441-8410

- M Brooklyn Bridge
- IB Bushel basket round
- IB Embroidered Mums bowl (N)
- IG Peacocks plate (N)
- IG Fruits & Flowers bon bon stemmed or any other color
- W Round Up bowl
- P Dahlia sugar lid
- P G/C pin tray
- PO Round Up plate or any other color
- P G/C card tray

Betty Klutts, 3800 N. W. 24th St., Oklahoma City, Ok 73107 PH 405-946-7497

- G G/C hat pin holder

ORDER FORM FOR 1982 H.O.A.C.G.A. SOUVENIR



PLEASE MAKE CHECKS PAYABLE TO H.O.A.C.G.A.
AND SEND THEM TO THE SECRETARY.

Lucile Britt
3048 Tamarak Drive
Manhattan, Kansas 66502

WILL PICK UP:

_____ 1982 Souvenir Corn Vase (s) at
\$40.00 each.

PLEASE MAIL:

_____ 1982 Souvenir Corn Vase (s) at
\$40.00 each. Add \$3.00 postage
for each corn vase.

PLEASE PRINT FULL NAME AND ADDRESS

LIMIT 2 PER COUPLE OR SINGLE MEMBERSHIP
Please return this order form along with
your payment in full to the Secretary, at
the address above.