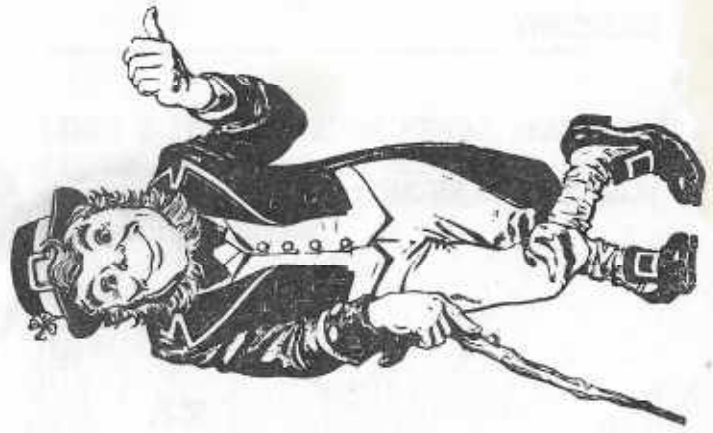


H. O. A. C. G. A.
DONALD E. KIME
BULLETIN SECRETARY
1202 W. 4th ST.
HAYSVILLE, KANSAS 67060

March 1982
S M T W T F S
1 2 3 4 5 6
7 8 9 10 11 12 13
14 15 16 17 18 19 20
21 22 23 24 25 26 27
28 29 30 31



MAR 13
PM
1982





Heart of America Carnival Glass Association, INC.

MEMBERSHIP JUNE TO JUNE
\$10.00 PER COUPLE OR SINGLE

PUBLISHED 15th OF
EACH MONTH

PRESIDENT:

GEORGE O. MCGREW JR.
6800 WOODWARD
OVERLAND PARK, KANSAS 66204
913-262-8822

VICE PRESIDENT:

GEORGE BOLLES
5204 CATALINA
SHAWNEE MISSION, KANSAS 66205
913-432-5438

TREASURER:

ELIZABETH BOLLES
5204 CATALINA
SHAWNEE MISSION, KANSAS 66205
913-432-5438

SECRETARY:

LUCILE BRITT
3048 TAMARAK DRIVE
MANHATTAN, KANSAS 66502
913-539-1933

BULLETIN SECRETARY:

DONALD E. KIME
1202 W 4th St.
HAYSVILLE, KANSAS 67060
316-524-3123

A MESSAGE FROM THE PRESIDENT

As my first year in this position draws to an end, I would like to thank all of you for the support that was given to your club. Everyone who has contributed something to the club, whether it was an article for the bulletin, the purchase of a souvenir, recruiting new members or by giving a few minutes of your time to help has the right to be proud. Your interest in this organization is what enables us to grow and keep you informed on the various aspects of this exciting hobby.

The Board of Directors have worked hard to try and bring you interesting and informative projects and material concerning Carnival Glass. We hope that you members will offer your comments and suggestions so that we will be aware of your interest.

Several weeks from now we will be celebrating our 10th Anniversary. This will take place at our annual convention, April 22 thru the 25th. If you have never attended our convention, we hope you will plan to attend and help us celebrate.

Although poolside rooms were sold out the first couple of weeks in January, there still are rooms available with the same features for displaying your glass as the poolside rooms. The only difference is that they are not located in the Holidome and they are less expensive.

The Board of Directors have initiated some new programs that will be introduced at this years convention. We hope that these programs will encourage participation from more members in the future.

Orders are now being taken for the 1982 Ice Blue Corn Vase souvenir. I realize that it must seem that we are always mentioning the sale of souvenirs, but as stated before, the funds from these souvenirs are the major financial asset of your club. Without these funds many of the items the club furnishes at no cost would have to be curtailed or completely eliminated. If you have not purchased one of the souvenirs take another look at a really fine piece of Carnival and help your club, by investing in its future.

I thank you again for your support this past year and hope that all of you will contribute in some way to your club no matter how little you think you have to offer, someone will benefit from your contribution.

/ George O. McGrew Jr.

FEBRUARY MINUTES OF H.O.A.C.G.A.

The February meeting was held at the Holiday Inn, Overland Park, Ks, February 28, 1982.

The meeting was called to order by President McGrew at 2:00 P.M.. He welcomed Orville and Edna Myers, Warrensburg, Mo., members of 4 years but this was their first meeting for them to attend.

Secretary report (minutes) were read by Donald Kime and were approved as read.

The Treasurer was out of town so there was no report at this meeting.

Souvenir report was given by Cooley Miller, Souvenir Chairman. He reported that Mr. Fenton would be pouring the souvenir on March 15, 1982.

President McGrew reported all table favor mugs from last year's convention have been mailed to those members not receiving them at the banquet. We have about 80 mugs left of the vaseline opal which we will sell for \$10.00 each plus \$2.00 postage. Send orders to George McGrew.

Bob Grissom reported the notebook inserts are almost complete. There will be 60 water sets starting with Acorn Burr thru Jeweled Hearts. He needs photo of the "Octagon Variet". Also the flute pattern is becoming a bit of a problem as there are several different flutes showing up. The notebook will feature water sets for the next 3 years. The charge this year will be \$4500.00 for the 60 inserts.

Convention Chairwoman Janet Zahn stated that the planning of the convention is progressing nicely. She is very pleased with the budgetting and excellent help that she is receiving.

The President announced that Allan Lettke of Burnsville, Minn, has volunteered to be the convention photographer this year. Thank you for offering, Allan.

President McGrew announced that Tom Burns has acquired an excellent collection of carnival for the convention auction. Brochures will be mailed out around the first week in April.

It was reported that Viola Shikles underwent surgery this past week. We all wish her a speedy recovery.

The suggestion was made to have a 1 P.M cutoff, Friday April 23 on the

sale of banquet tickets for the convention. If you cannot make this deadline in person please make arrangements to get your tickets thru a friend that will be there.

The meeting was then adjourned. Some of the members brought some glass for identification and show. A discussion followed on the likely hood of finding rare or good buys in carnival glass. Also Roland Kuhn gave a report of the Jack Wilson sale that he had been to the day before.

Linda McGrew Acct Secretary

George O. McGrew Jr. President

BE ON THE ALERT

A collector in the Kansas City area just reported that the home had been broken into and at least 100 pieces of fine carnival glass was taken as well as some cut glass. Some of the pieces were as follows: Four Flowers Variet plate, peach opal Nautilus, Jardiniere whimsey, blue Wreath of Roses punch set and green Northwood Grape & Cable center piece bowl. There were numerous other Grape & Cable pieces also taken. If you should suspect or come across any leads in this robbery please contact the Fairway Police Department.

TENTATIVE ITINIARY FOR H.O.A.C.G.A. 1982 CONVENTION

WEDNESDAY APRIL 21, 1982

Early Registration-2:00 P.M. to 4:00 P.M.
Hospitality Room - 7:00 P.M. to 8:00 P.M.

THURSDAY APRIL 22, 1982

Registration-9 A.M. to 12:00 P.M.
Registration-4:30 P.M. to 5:30 P.M.

7:00 P.M. to 8:00 P.M. Panel discussion: with William Heacock, Frank Fenton, John Britt, Tom Burns. If you have any questions on Carnival Glass or the producing of glass be sure to attend this event. - A panel with respected personnel as this, does not happen very often.

FRIDAY APRIL 23, 1982

Registration 8:00A.M. to 10:00 A.M. - Last opportunity for full registration
I'll Top That-Hour-11:00A.M. to 12:00 P.M. Humorous or unusual stories on finding Carnival Glass. There will be an award for the best story or stories.

Pre-Meeting Introductions & Recognitions 1:30 P.M.
Annual Business Meeting-2:00 P.M.
Social Gathering-5:30 P.M.
Banquet-6:00 P.M.
Guest Speaker Mr. William Heacock-7:30 P.M.
Auction of Whimseys after Speaker

SATURDAY APRIL 24, 1982

Preview of Auction-8:30 P.M.
Deadline For Voting On Room Display Awards-9:00 A.M.
Auction-9:30 A.M. Tom Burns has acquired a collection for the convention. It is a collection from the Southeast and contains many unusual pieces all of excellent quality. Brochures will be mailed around the first of April to all those on Burn's mailing list. If you are not on his list contact him so you can receive the brochure. Some of the pieces that will be for sale appear below:

S G/C Banana bowl damaged but rare	IG-Opal Peacock & Grape bowl
M Ohio Star vase	AQ Lustre Rose covered butter dish
P G/C dresser set	Amberina Ripple vase
AQ Daisy Block row boat	M Heart shape Hobstar & Feather sauce
W Rose Show bowl	P Wishbone ftd plate 3 sides up
IB Fern Panel vase	B Texas tumbler English
P Flute celery vase	B Near Cut ladies spittoon English
B Butterfly & Berry femery	G Little Barrell
AO Hearts & Flowers compote	G Corn Bottle
A Palm Beach whimsey	
G Peacock at Fountain pitcher 4 tumblers	
AQ Hearts & Flowers bowl tips opal	

Hospitality Room Opens-6:00 P.M.
Chuckwagon Dinner-6:30 P.M.
Dance 8:00 P.M to 12:00 A.M.

SUNDAY APRIL 25, 1982

Farewell Breakfast-7:00A.M.

CONVENTION DATES

April 22-23-24-25

HEART OF AMERICA CARNIVAL GLASS ASSOCIATION, Holiday Inn, 7240 West 63rd St., Overland Park, Kansas 66222

June 18-19

Lincoln-Land Carnival Glass Club, holiday Inn/West, 201 North Mayfair Road, Milwaukee, Wisconsin

June 24-25-26-27

Northern California Carnival Glass Club, Dunfey Hotel, 1770 South Amphlett Blvd., San Mateo, California

July 8-9-10

International Carnival Glass Club, Midway Motor Lodge, 300 South Main, Elkhart, Indiana

July 29-30-31

American Carnival Glass Club, Imperial House Motel South, Dayton, Ohio 5 miles South of Dayton on I-75

BY JOHN & LUCILE BRITT



PANELLED DANDELION: NOT RARE, BUT VERY DESIRABLE

The "Panelled Dandelion" tumblers are slightly taller than most other tumblers and stand about 4 1/2 inches tall. The tumbler slopes in rather sharply to one and seven eights inches at the base. They have a top diameter of about three inches. Six arched panels surround the tumbler and each panel contains four dandelions. The base is plain, recessed and is usually factory ground around the edge.

The tumblers are found in marigold, blue, amethyst and green. The green is the least often seen with marigold being the most common. Blue and amethyst follow in that order.

There seems to be a rather large demand for tumblers in this pattern. This is mostly due to collectors needing tumblers to fill out their water sets. The "Panelled Dandelion" water set is beautiful as well as very desirable. This pattern was made by the Fenton Art Glass Company of Williamstown, West Virginia. The pitcher and tumbler are shown in an old 1910 Butler Brothers catalog along with the "Butterfly and Plume" pitcher and tumbler. They were priced in this

Wholesale catalog for dealers at 62¢ per set of pitcher and six tumblers. Butler Brothers advertised them as their "Venitian Embossed" iridescent water set assortment. Six sets were packed in a barrel and were advertised as "Dollar Profit Makers" for their customer stores. This means they probably retailed for around \$1.65 a set. Remember that this was in 1910---some 70 years ago.



REPRINT FROM 1910 BUTLER BROS. CATALOG



PANELLED DANDELION TANKARD AND TUMBLER

This article is No. 50 in our carnival glass tumbler series. Next month we will discuss the rare and unusual "Chain & Stars" tumbler.

PICTORIAL PATTERN PARADE

By John & Lucile Britt



MARIGOLD PANAMA WINE

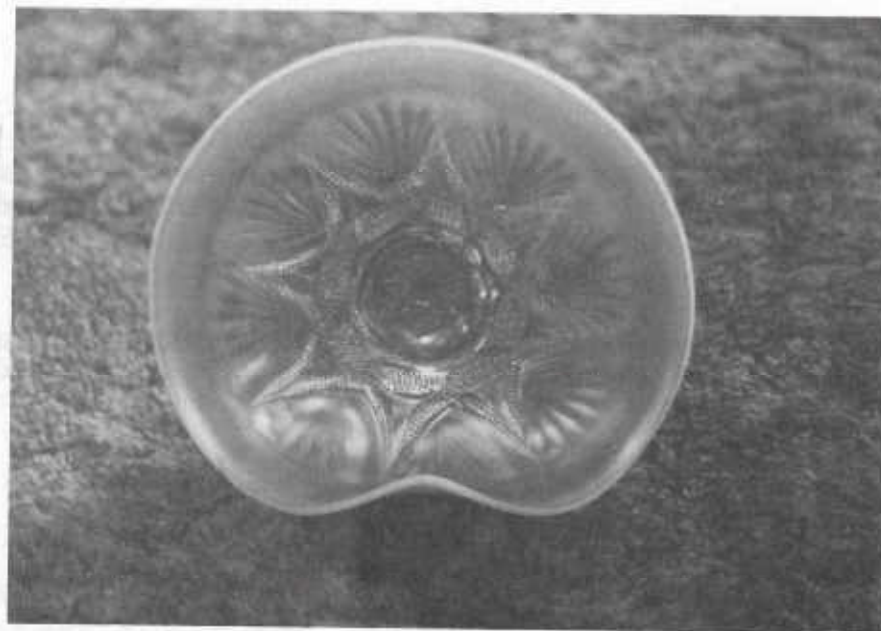
This little wine, with good iridescence, is the first piece in this pattern ever reported in carnival glass. "Panama" is a U.S. Glass pattern. The U.S. Glass Company is known to have made a few other patterns in carnival glass, such as Field Thistle. "Panama" is described in Kamm book 2-page 49. The pattern can also be found in "U.S. Glass from A to Z" by William Heacock and Fred Bickenhevser. It is shown on page 179 of that pattern glass book.

The pretty marigold wine is owned by Mrs. Ralph Cline of Yakima, Washington. The above snapshot, that she sent to me does not show the pattern very good, but it does show the shape of the piece. In order for you to clearly view the pattern, I am including a picture of a "Panama" crystal water pitcher, which indeed does give a good view of the pattern. Note that the pattern does resemble the Chatelaine pattern, but of course on close inspection is distinctively different.



U.S. GLASS CO., PITTSBURGH, PA.

PANAMA PATTERN BY U.S. GLASS



UNUSUAL PEACH PIECE

Although "Ski-Star" is a pattern with which many carnival collectors are familiar, it is commonly found only on collar-based bowls. These come in both purple and peach-opalescent. They vary from the large 10" - 11" center berry bowl down to the 5 1/2" individual dish.

The dome-footed bowl is also found occasionally in the 8" - 9" size. The rarest piece of this pattern, in my experience, is the large handled basket.

However, any plate of any size or color in Ski-Star is a real "find", and any like the hand-grip plate shown in the photo is also a rarity.

This is in peach-opalescence of fine color, the opalescence covering the edge evenly, and running over on the back to a width of 1 3/8" inches.

The plate measures 8 3/4 inches in diameter and is 3 7/8 inches tall to the highest point. The dome foot is clear, and 3 7/8 in diameter, 1 1/4 inches tall. This base is patterned around the edge in a diamond fine-cut pattern, which the center carries a daisy figure of 24 intaglio petals.

There is a near-cut pattern-neat, not overly "busy" on the under-side of the plate itself, which shows through to some extent and gives a

very attractive appearance.

Altogether, this is an appealing and different piece of carnival glass and one which both beginning and advanced collectors would do well to add to their treasures. The one shown came from a New England collection.

The maker is unknown to me. We heard many such patterns attributed to the "Dugan Glass Works, but without trade mark or illustrated advertising, many of these remain unknown as to maker to me.

Marion Hartung
Emporia, Kansas



Carnival Cameos

BY DONALD MOORE



EGYPTIAN QUEEN - The piece on the right has been variously called a tumbler, a vase, and a celery. It is 5 3/4" tall, and I expect it is more logical to call it a vase than anything else. The piece on the left is one of only two that has turned up in this larger size. It stands 7 3/4" in height and can very definitely be labeled a vase. Technically it should not be called "Egyptian Queen," as the figures around the band at the top are identical to those found on the Classic Arts pieces.

These Egyptian Queen and Classic Arts pieces have been a bit of a mystery. It is quite obvious they were all made by the same company, and most collectors feel they are English. I have seen these pieces only in marigold. The larger vase on the left recently sold for \$375. The smaller one sold for substantially more than that when they were just discovered and thought to be extremely rare. Several have since been found, and they will now sell for around \$150.



HONEYCOMB AND HOBSTAR VASE

I am very proud to be able to show this extremely rare Millersburg footed vase. Two of these are currently known, one in amethyst and the example shown in cobalt blue.

The heavy vase stands 8 1/4" tall and has the same base design as the Hobstar and Feather giant rosebowl. The design is a series of five hobstars in a vertical line with honeycombing on either side; this design is repeated three times around the vase.

Interestingly enough, the example shown was found in the back room of a Millersburg drug store, located on the ground floor of a hotel where John Fenton lived after the factory's closing. We can only speculate how this rarity (another rare vase was found in the same location and will be discussed at a later date) come to this location, but it is possible Mr. Fenton traded the vase for some drug store item. The blue vase has resided in a Canton, Ohio home for many years and was on display at the 1981 A.C.G.A. convention where it caused considerable excitement.

The other vase in amethyst, resides in the Cambridge glass museum where it has mistakenly been labeled as a Cambridge product. It is identical to the blue vase in size and shape and has equally good radium finish.

Certainly there must be more of these beautiful vases out there and I would be most pleased to hear from anyone knowing of others.

COMING SOON

A new book is coming out by Bill Edwards that will be a must for all collectors of carnival glass. The proof has been received and it looks to be a SUPER publication all the way around.

"Standard Encyclopedia of Carnival Glass", hard back, 656 color photos, full coverage of British and Australian patterns as well as the large and small American companies. It should be out in mid-April from Collector Books and will sell for \$24.95.

Please add to the list of OLD CARNIVAL GLASS LIBRARY the following:

"FENTON GLASS- THE FIRST 25 YEARS", 144 pages, 72 in full color, more than 400 items pictured in Fenton's carnival and iridescent "stretch" colors, rare catalogue reprints (some in color), a complete history of the factory's early years, from 1907 to 1932, \$15.95 for softcover edition with price guide, \$20.00 for limited edition hardbounds. Order from the Author, William Heacock, P.O. Box 27037, Columbus, Oh 43227

UPCOMING AUCTION

At New Philadelphia, Ohio, April 2-3, 350 pieces of nice carnival including 100 pieces of rare Millersburg will be offered at auction. Approximately 100 pieces will be sold Friday evening and the rest Saturday. Tom Burns and Bill Richards will be the auctioneers. For more information contact Tom Burns. The collection is that of Jean Spierling.

Until July of this year, 1981, it was assumed that most of the catalogues and records of the great English glass firm of Sowerby's were lost. Due to the kindness of Ronald Inch and Michael Blicq we now have catalogues with gaps, that span the years from 1885 to the post Second World War period. One cannot emphasize too much the importance of this find, and one cannot thank sufficiently our friends for sharing them with us. They are the U. K.'s foremost and, as far as we know, only full-time dealers in pattern glass.

Material relevant to the main years of Carnival production has been passed on to Bill Edwards for his archives and William Heacock will be using the pattern glass material in due course.

I hope to share with you all, over the months, the interesting information now to hand and to illustrate it with glass from the Notley-Lerpiniere collection. I hope it will interest and enlighten and, in many cases, clear up some misunderstandings. I have learned so much from the unselfish sharing of information that goes on in the American Carnival World, and in my own small way am delighted to repay the debt we owe, in the United Kingdom, to the pioneering and ever continuing research you have all done in the U.S.A.



WICKERWORK
Sowerby Pattern Number 1102
Named by Ray Notley (Not in Hartung)

It is appropriate that you should be reading this in 1982 because the item we are looking at this month was made from moulds that are celebrating their centenary. The pattern itself is slightly older and the first goods made with this pattern number were bushel baskets, spill vases and ice-buckets. These were available in exotic colours such as malachite, Patent Queen's Ware, Blanc-de-lait, as well as opalescent turquoise and plain flint (crystal).

The bowl, and optional stand, are shown here in a milk glass version from the 1880's and the marigold carnival version of 1927. As this pattern is not shown or named in Carnival literature that I am aware of, I have christened it "WICKERWORK". There are so many basketweave patterns already that I hope this name will be acceptable both sides of the Atlantic. The hundred year gap between the birth and christening of this design is another matter altogether. I do hope no one else has already named this little orphan.

Although in two parts, the early opaque versions of "WICKERWORK" are often found stuck together with a curious hard white substance that I've been told is a mixture of fish-bone glue and plaster of Paris. I must agree with this because when we soaked a milk glass version glued in this way it gave off a smell that we found dreadful, but which our cats thought very attractive. The Carnival version is, mercifully, quite odourless. The three legged base is marked with two Sowerby trade-marks. This is unusual and I can offer no explanation for this double marking. The plate or bowl is unmarked in the carnival version and does not have the band of stippling on the base that the milk glass ones bear. This was a key for the glue.

The 1927 Sowerby catalogue shows, "1102 PLATE AND STAND (LOOSE)". This was to ensure that wholesalers familiar with Sowerby products, understood clearly that the "WICKERWORK" plate and stand were no longer available glued together. This list shows that the top half was available as a bowl or a plate (I show bowls) and the tripod base was available as a matching stand. The stand was sold separately as a pin tray. So if you own either a top or a bottom in this pattern, you do, strictly speaking, have quite separate entities. Naturally the two go very well together but the odd carnival base in "WICKERWORK" serves very well to display any marigold bowl or plate that fits it. Most useful. The moulds when used in the late 20's had already seen much service and the carnival dishes and stands are not as crisply moulded as the earlier editions. At the end of their brief use for

Carnival Glass production (around 18 months) the moulds were discarded. It is interesting to note that a run of this pattern, in ruby glass, was made simultaneously with the carnival and one wonders if any of the red ones were iridised? The only known colour in Carnival is marogold i.e. SUNGLOW. It is worth noting that one of these dishes and stand in Marigold, are, as far as I know, the only pieces of Carnival glass to be on permanent display in any English museum.

(Author's copyright reserved 1982)

I would be delighted to correspond with any member who has an interest in English Carnival glass or glass related to it. I intend to write a big general article, in several parts, in the future but at the moment am concentrating on Sowerby's. I am especially interested as to how their glass reached the U.S.A. In view of the fact that they did not make it until the late 1920's when carnival was on the way out in the States and that, generally speaking, it is of an inferior quality to stateside carnival, I find it hard to believe that it was imported in bulk. Has it all in fact turned up in the States through the U.K. container boom of the 1960's and 1970's? Can anyone help me? I would be so grateful. Thank You.

Ray Notley
29, Windsor Road,
Wanstead, London E11 3QU,
England



Next month we will feature the much discussed Hen and chickens butter dish. I think many doubts will not be cleared up in this article.

MILLERSBURG AUCTION
JACK WILSON COLLECTION

For those of you who did not get to go to Strongsville, Ohio for this spectacular auction you missed something. As you know Jack and Liz Wilson have worked long and hard to put together this fine collection of Millersburg glass. The glass was outstanding. We all keep thinking the economy will slow down the glass market and the price but as you will see it did not slow the bidding at this auction. Of course we all want to know right away what the highest price paid for a piece of carnival is at a carnival glass auction. Words cannot do justice to the beautiful blue Rose Column vase which fetched a price of \$8,000.00. We will try and list a few of the prices received for some of the pieces.

Zig Zag tri cornered bowl A 300	Seacrest pin tray G 250
Isaac Benesch Adv bowl A 175	Seacoast pin tray A 200
Hobstar & Feather giant rose bowl A 375	Seacoast pin tray M 275
Hobstar & Feather punch bowl top only G 400	Sunflower pin tray G 200
Hobstar & Feather 14 pc punch set M 1600	Sunflower pin tray A 320
Ohio Star lg rose bowl crystal 175	Sunflower pin tray M 350
Hobnail Spittoon G 800	Marilyn tumbler A 125
Swirl Hobnail rose bowl A 250	Marilyn water pitcher M 450
Swirl Hobnail vase M 225	Marilyn water pitcher G 1200
Swirl Hobnail base A 200	Marilyn tumbler G 550
Swirl Hobnail vase G chip 80	Nesting Swan ruffled bowl 250
Swirl Hobnail Spittoon G cracked 325	Hobnail 3 pc table set M 1100
Diamond water pitcher M 225	Hobnail water pitcher B 1400
Diamond tumbler G 140	Millersburg Peacock at Urn ice cream set A 600
Diamond 7 pc water set A 475	Peacock 7" ruffled bowl G 300
Perfection tumbler A 300	Peacock 7" ruffled bowl A 300
Perfection water pitcher G damaged 900	Peacock 9" ruffled bowl G 325
Trout & Fly ruffled bowl M 175	Peacock 10" ruffled bowl B 1500
Trout & Fly ruffled bowl M 275	Peacock chop plate M 1650
Trout & Fly ice cream bowl M 250	Peacock lg rose bowl vaseline only one known 2250
Trout & Fly ice cream bowl G 325	Fleur De Lis rose bowl A 600
Trout & Fly ice cream bowl A 325	Ohio Star jelly compote M 525
Trout & Fly ice cream bowl lavender 650	Rosiland 6" compote G 475
Trout & Fly square bowl 475	Rosiland 6" compote A 425
Big Fish ruffled bowl M 300	Wild Flower ruffled compote G 1400
Leaf & Little Flowers min compote A 425	Rosiland tall ruffled compote M 600
Leaf & Little Flowers min compote G 225	Rosiland tall jelly compote A 1050
Leaf & Little Flowers min compote M 250	
Little Stars 9" ice cream bowl M 400	
Seacoast pin tray G 250	
Seacoast pin tray A 200	

Deep Grape compote A 1700
 Millersburg Acorn compote vaseline 3000
 Multi Fruits & Flowers complete 10 pc punch set G 1800
 Multi Fruits & Flowers 10 pc punch set M 1300
 Feather & Heart pitcher G 375
 Feather & Heart tumbler A 175
 Gay 90's tumbler A 300
 Morning Glory tumbler A 300
 Vintage Grape /Hobstar ext M 250
 Vintage Grape/Hobnail ext G 425
 Vintage Grape/Hobnail ext G 425
 Vintage Grape/Hobnail ext ruffled bowl B 3100
 Cherry 4 pc table set A 600
 Cherry compote A 750
 Cherry compote M 350
 Cherry compote G 750
 Cherry tumbler flared top M 155
 Cherry water pitcher A 500
 Cherry milk pitcher A 425
 Cherry milk pitcher M 575
 Cherry 5" ruffled bowl B 700
 Cherry 6" flat plate M 375
 Cherry covered powder jar G 850
 Seaweed 9" flat plate G 775
 Roses & Fruit compote G 450
 Roses & Fruit compote M 475
 Fruit Basket compote A 950
 Wild Rose lamp small size A 575
 Wild Rose lamp med size G 500
 Millersburg Diamond punch bowl & base A 800
 Dolphin compote A 750
 Elks paperweight A 475
 Elks paperweight G 850
 Millersburg Elk ice cream bowl 625
 Blackberry Wreath 6" plate M 425
 Cleveland Mem ash tray A 1000
 Cleveland Mem ash tray M 1400
 Many Stars ic cream bowl 300
 Many Stars ruffled bowl B 650
 Ohio Star vase A 500
 Ohio Star vase G 500
 Ohio Star vase M 475
 Mitered Ovals vase G 1700
 Rose Columns vase G 1150

Rose Column vase A 650
 Rose Column vase M 900
 Rose Column vase B 8000
 Blackberry Wreath ic cream B 750
 Millersburg Courthouse A 425
 Strawberry domed compote vaseline 925

Strawberry square bowl A 500

These are just a few of the prices of this fine auction but it gives you an idea of a mixture of all kinds of pieces that were sold.

RARE, BUT WHO CARES?

In 1980, at the Perrysville, Ohio, convention of the I.C.G.A., Eunice and I decided to put together a Carnival display called "Imperial Geometrics." It was fun to put this display together as Imperial Carnival is not highlighted in many collections. Imperial made some outstanding Carnival. Our purple Octagon pitcher is one of the most beautiful pieces of Carnival in our collection. I do think that the Imperial reproductions have caused many collectors of old Carnival to look with disfavor and skepticism at the products of this company. But I am digressing from my theme, "Rare, But Who Cares?"

Included in our Geometrics display were five pieces of rather unimposing pattern, "Flute and Cane." The pieces displayed were a tall pitcher, a milk pitcher, a goblet, a compote (same size as the goblet), and a large 6 3/4 inch compote. I personally thought this was an unusual collection of a hard-to-find pattern. I guess the people viewing our display were not as impressed with this pattern as I am. I don't remember a single comment about these pieces. (Since that time I have added a cup and sherbet. A cordial and a small size creamer and sugar also exist.)

A few years ago I saw a photograph which showed a pitcher with two tumblers in this pattern. What a surprise this was as a tumbler in this pattern had not been reported. A somewhat greater surprise was the Pattern Notes from the old Imperial catalog as reported in the I.C.G.A. Newsletter of June, 1981. These old catalog reprints showed several Flute and Cane shapes in iridescent lustre including tumblers in two sizes.

I have seen a few pieces in this pattern that I have not bought. A rather shiny marigold bowl, reportedly brought to this country from England in the early 1900's, did not tempt me. A lovely light blue bowl was shown at one of the conventions by the Bicksler's of Ohio. The other piece that was passed up was a pale marigold oval pickle dish that was chipped.

According to the literature available this pattern is in small supply. When it is found it doesn't seem to impress very many people. I like it. I find it very pleasant without being gaudy. Not too many people agree with me. Rare, but who cares?

Carl T. Booker
 Griffith, Indiana

Friday February 12th was another sunny day except we planned to go to the Hilton in the evening to see if there were some early arrivals for the Jamboree. To our surprise Ralph and Florence Brown of N. Y. found us in the afternoon so we started visiting and talking carnival. We went to the Hilton later and there were about 30 carnival people visiting and greeting one another in the lobby, but Tom Burns failed to appear.

Saturday morning was clear and windy but did not hinder Bill Crowl, the only dealer set up outdoors. It was a nice surprise to step into the room and see so many tables of carnival for sale and on display. There were times you could hardly get through the aisles as someone inspected a piece of carnival. I noticed many carrying packages to their cars and I think some pieces were traded. We also were able to check out the auction pieces and pick out those we wanted to get. The room was emptied before 4:00PM so it could be used for the delicious banquet at 6:00 PM. After few words from Mr. Arthur Smith, President of Tampa Bay Club and others at the table there was a break so the room could be readied for the auction. It was well attended and many left with carnival to add to their collections.

On Sunday the Browns came by and we went to the flea market, Bok tower and Spook hill. Monday evening we went to the motel to visit then and hold an impromptu carnival meeting in the room of Kitty and Bob Vining, Georgia. Those present were Lucile & John Britt of Kansas, Ralph and Florence Brown of New York, Chris and Ethel Harnish of Pennsylvania and Phillip and Florence Graham of Indiana. We enjoyed a couple of hours talking carnival and visiting hardly noticing the rain outside.

It was a great mid-winter break and convention and we thank Mr. & Mrs. Arthur Smith, President Tampa Bay Club for their hard work.

Florence & Phillip Graham
Indiana & Florida

HUNDREDS LOSE HEARTS TO CARNIVAL GLASS IN FLORIDA

The Lose Your Heart to Carnival Glass Jamboree sponsored by the Tampa Bay Carnival Glass Club, Saturday February 13, 1982 at the Lakeland Hilton proved to be the largest carnival glass gathering ever held in the state of Florida. From opening time at 7:30 A.M. to closing time near mid-night the air was filled with excitement as old and new carn-

ival glass collectors examined, purchased and talked of the wonders of carnival glass. As the show opened there were more than twenty tables of exciting glass. Many of the exhibitors shared tables due to the overflow group of exhibitors.

The local newspaper carried a feature story with color photos which attracted many local viewers. Among the carnival glass exhibitors and guests were representatives of thirteen states, Canada as well as local Florida enthusiasts.

After a day of viewing and buying fifty-three guests enjoyed a banquet. Art Smith, President of the Tampa Bay group and organizer of the Jamboree, served as toastmaster. Among the outstanding collectors present Smith introduced Bob Vining, Past President of I.C.G.A. and his wife Kitty; Rovene Heaton, Past Secretary of I.C.G.A. and her husband Francis; Lucile Britt, Secretary of H.O.A.C.G.A. and husband John; Ruth Argyros, founder and past President of The Tampa Bay Group and husband Ray; Shirley Conyers, Secretary of the Tampa Bay Club and husband Maurice; Walter Holzworth, Vice President of Tampa Bay Club and wife Dorothy. In responding to the many nice things that were said Art Smith thanked all the group present for their cooperation and goodwill and paid tribute to his "partner and wife" Dorothy for her help in the planning.

The Tom Burns Auction followed the banquet and was well attended. Mike Bevill aided Tom during the auction.

Arthur I. Smith
Florida

We have very little opportunity to purchase carnival here in Alpena, Michigan. Only occasionally do I have a chance to buy some. Because carnival is so scarce here, each piece is even more meaningful. That is why I am happy to pass on to you that, through the H.O.A.C.G.A. bulletin, I recently bought a pair of ice green Florentine candle sticks.

Raleigh Jacques

I congratulate you on the good work you are doing as Bulletin Secretary. I must say I always enjoy the bulletin and learn something new every time, through the Educational Series and Carnival Cameos. I think the pictures are very well produced in there too.

I see your convention in April is coming up soon and I wish you all the very best of luck with it.

Angie Hallam
England

The Air Capital Carnival Glass Club met at the home of Betty and Don Greb for our February meeting.

Eighteen members were present. Mr. Walter Adrian was welcomed to the meeting. He has been a member for some time but this was his first time to attend one of our meetings.

Winnie Brim gave the program. She had brought some nice pieces to show and tell about. Among those were: Pastel marigold Orange Tree large footed ice cream bowl, white Persian Garden large bowl, blue Peacock and Dahlia small bowl, white Open Rose centerpiece bowl and a blue Apple & Pear divided dish. The large pastel marigold Orange Tree bowl is shapped like the Stag & Holly bowl. We understand this is quite rare in this color.

Donald E. Kime
Secretary

SAD NEWS

Word has been received that Robert McCaslin's father passed away also Phil Parish of Canada has passed away. We extend our sympathy to their families and our thoughts are with you.

Also Vi Shikles had major surgery. We wish her a speedy recovery.

ON THE ENGLISH CARNIVAL SCENE

I am glad to say there is still a reasonable flush of Carnival to be found here in the U.K. but one has to search hard for it.

At Eastbourne on the Sussex Coast I had been looking round a big fair searching every stall without finding very much. Every piece I saw I already had in my collection. Lucky me.

Then I decided to go on to a little market which was about a mile along the seafront. After a long windy but refreshing walk, I arrived at this market feeling windswept but braced by the sea air. Looking over the various stalls, I suddenly came upon a marigold plate, in the "Smooth Rib" pattern and with a lovely star-like pattern cut into the underneath side in the centre. Of course I did not hesitate and bought it and felt my long sea front walk had been worth while.

On New Year's day, I attended a giant fair at the Wembley Conference Centre in North London. There were more than 400 stands and as you can imagine it took me nearly all day to look around. There were stands upstairs and downstairs in three large halls and boy, was it crowded-and hot. Despite the crowds and heat, I hunted down three nice pieces.

One was a marigold small bowl in the "Diamond Ring" pattern, another a marigold "Diamond Ovals" compote, also a green "Long Thumbprints" vase which has beautiful iridescence. The big disappointment of the day was that I narrowly missed a "Daisy Block Row Boat" - or as I prefer to call it, "The Grace Darling Lifeboat". Some friends just pipped me to it. It was in marigold and I console myself that it was unmarked and without a stand - and just was not meant for me.

Only last weekend, I had two friends from Dorset, call in to look at my collection of Carnival. They have just started collecting and of course, seeing so many different pieces was quite an eye-opener for them. We were a long while talking Carnival and discussing the many patterns, shapes and colours and now they have both become really 'hooked'.

They also brought a piece to show me, an item of English Carnival which they thought I would be interested in. It is a very pretty bowl with the outside covered in large and small hexagonal diamonds in the more unusual colour of amethyst, not the usual marigold one

finds this pattern in. The edge of the bowl has deep waves all the way round and down the bowl, which is deep and smooth on the inside. So another nice English piece has been added to my collection.

Not a week goes by now without another U.K. Carnival collector coming to light as a result of my book. They write to tell me, with real enthusiasm about their collections and what they have found or how they began to start collecting.

One lady wrote to me recently with a most interesting find. She had found a red "Peacock & Urn" bowl, quite recently, and as it was her first red piece, she was delighted with it. Another couple wrote saying they had found quite a few plates and also a red "Dragon & Lotus" bowl, so it shows these rare pieces are around to be found.

Good progress is being made with the setting up of a U.K. Carnival Club and our first newsletter is now almost complete. The club should be launched in April, along with the first newsletter. Perhaps later in the summer, we may have a "mini-convention" for those collectors living in and around London. Anyone wanting to join the U.K. Carnival Club, please write to me and I will add your name to the list and send you your first newsletter as soon as it is out. Happy hunting folks.

Angie Hallam
82 Chart Lane
Reigate RH2 7EA
Surrey, England

WELCOME NEW MEMBERS

M/M Martin Schoettler, Sr., Sewell, N.J.
Jessie Mae Bardwell, McComb, Miss
M/M Carol Hartigan, Smith Kingsville, Victoria, Australia
Primrose Cowlin, Spalding Lincolnshire, England

FAREWELL PARTY FOR HEATONS

Dorothy and Art Smith hosted a farewell party for Rovene and Francis Heaton at their Lakeland home February 18. Rovene and Francis have been wintering in the Lakeland area for the past several years. However, the Heatons are moving to Arizona March 1st to be closer to their children and grandchildren. And, this is of course, the best reason for any move.

Rovene and Francis have been a big help to the Tampa Bay Carnival Glass Club and Art Smith expressed how much their cooperation was appreciated.

Among those present paying tribute to the Heatons were Kitty and Bob Vining, Lily and Eddie Laman, Florence and Phil Graham, Lucile and John Britt, Christ and Ethel Harnish.

Rovene cut the rose decorated cake which had the inscription Fond Farewell Rovene and Francis. Art presented the Heatons with a series of photos of the pleasant evening. One final note the Heatons are leaving Florida which is Arizona's gain but we will be keeping in touch.

Arthur I. Smith
Florida

I am enclosing a money order for my membership into the H.O.A.C.G.A. club. I have heard of your club from Angela Hallam.

I have been collecting carnival for over 20 years and have about 200 pieces. I never realized there was such interest in America. I am very much looking forward to receiving my literature and learning as much as I can about carnival.

I wonder if there is anyone who would care to correspond with me? I am a school teacher-married but no family. I am interested in crafts, dancing and of course carnival glass. Any letters would be gladly answered.

Primrose Cowlin
43 Chaucers Way
Spalding Lincolnshire
England

FOR SALE

Mrs. L. E. Ashley, R 3, Potsdam, N Y 13676

B Heart & Vine plate	225
P Corn vase	225
W Corn Vase	225
IG Corn vase	225
IB G/C centerpiece bowl flames are turned in like giant rosebowl	475
IG Peacocks on the Fence plate	175
B Bushel basket straight handles	105
W Orange Tree Fentons plate	145
W Constellation Sea Foam compote	65
M Captive Rose plate	115

Mavis Loescher, 2420 Park Ave, Beloit, Wi 53511 PH 608-362-3104

M EI Bambi powder jar	10
M EI Covered Duck with orig scoop	12
W EI Wild Strawberry large bowl 9 3/4	195
R EI Scale Band 6" bowl brick red	125
M EI Little barrel	55
P EI G/C candle lamp complete	600
A EI Millersburg Fleur-De-Lis some ftd bowl nicks on saw tooth edge normal	90
A EI Vintage epergne nick on lily where it goes into base	60
W EI Grapevine Lattice tumbler	70
A EI Millersburg Big Fish bowl	325

Edward Henderson, 1111 N College, Stuttgart, Ark 72160 PH 501-673-8757

M EI Imperial Grape bowl	20
M EI Open Rose ftd bowl fine crack	30
M EI Peacock & Grape Berry Spray bowl chip on bottom	45
B EI Persian Medallion bowl 4 fine cracks	25
LM EI Ribbed bowl	35
M EI Rococa bowls 4 ea minute chips ea	10

A EI Stippled Ray (N) minute chip bottom bowl	45
G EI Stippled Ray (N) bowl	50
A EI Twelve Point bowl	40
M EI Panthers & Bleeding Hearts minute crack	50

Charles E. Vaughn, 914 8th Box 522, Baldwin City, Ks 66006 PH 913-594-3710

M EI Broken Arches punch bowl & base	250
--------------------------------------	-----

Don Moore, 2101 Shoreline Rd., Apt 462, Alameda, Ca 94501 PH 415-521-4592

DP EI Kangaroo large bowl	135
DP EI Kookaburra large bowl	125
DP EI Australian Swan large bowl	100
DP EI Magpie large bowl	100
DP EI Thunderbird large bowl	100
M EI Butterfly & Bells compote	60
M EI Butterfly Bush compote	60

Lydia Caudle, Rt 1 Box 87, State Road, N C 28676 PH 819-874-2519

M EI Butterfly & Berry water set 7 pc	265
P EI Acorn Burr 7 pc water set	745
G EI Raspberry milk pitcher	179
AO EI Rose Show bowl	450
A EI Pony Head bowl	145
P EI G/C 7 pc water set	439
175 R EI Peacock & Grape 9" bowl	675
W EI Persian Garden ice cream bowl large	179
G EI G/C candle sticks pair	245
M EI Horse Medallion plate	120

Ruth Schinestuhl, 55 Natalie Terrace, Absecon, N J 08201 PH 609-641-1814

IB EI	Hearts & Flowers bowl	195
AO EI	Fruits & Flowers bon bon bubble break on base	195
A EI	Dandelion mug	240
AQ EI	Sailboats bowl rare	100
AQ EI	Horse Medallion nut bowl	225
M EI	G/C pin cup (tray)	42
P EI	Rooster hatpin	35
G EI	Stag & Holly bowl	95
M EI	G/C water set 6 tumb	295
M EI	Wild Blackberry bowl rare	75

Arthur Smith, 4535 Holder Ct, Lakeland, Fl 33803 PH 813-644-4058

M EI	Kittens dish 2 sides up 2 ea	85
M EI	Kittens dish 2 sides up ea	110
M EI	Daisy & Plum compote	25
M EI	Apple Blossom candy dish	25
M EI	Apple Blossom bowl	30
B EI	Orange Tree mug	50
M EI	Holly carnival 9 1/2 plate	95
M EI	Lotus & Dragon bowl 8 1/2 2 ea	37

Arnie L. Wall, RR 1 Box 77, Horseshoe Bend, Ida 83629 PH 208-584-3411

M EI	Roses & Ruffles lamp base scarce	450
DM EI	Octagon toothpick faint markings old	95
P EI	N Cherries large berry & 3 sm1 ext Jewell & Heart	175
G EI	Good Luck bowl	135
B N	Windflower plate ruffled	138
M EI	Ships & Mums low bowl	38
DM EI	Wild Rose bowl N	40
DM EI	Heavy Grape Fenton bowl	40
DM EI	Peacock at Fountain ftd fruit bowl cracked	50

Patricia Craver, Box 8015, Allandale, Fl 32023 PH 904-788-5315

P GI	G/C perfume bottle no stopper	100
G EI	G/C (N) master berry bowl	75
M EI	Pansy dresser tray	20
P EI	Chatelaine tumbler cracked	50
P EI	Oriental Poppy tumblers 2 ea	40
M EI	Tiger Lily tumblers 4 ea	20
G EI	Stippled Ray bon bon	20
MG GI	Floral & Optic bowl rought feet	50
P EI	G/C (N) breakfast creamer	60
M EI	Millersburg Blackberry Wreath 6" bowl 4 ea	20

Ray Reichard, R 1 Box 195, Dallastown, Pa 17313 PH 717-244-5760

M EI	Holly pattern hat shape	15
M EI	Pineapple creamer	37
M EI	Lea ftd creamer	22
M EI	Golden Flowers vase	35
G EI	Feathered Serpent 9 1/2 bowl	45
B EI	Captive Rose double crimped bowl	40
W EI	Rose Show bowl	225
M EI	Beaded basket with handles	28
M EI	Inverted Coin Dot tumbler	35
M EI	Jelly jar with lid	30

Mary Herren, 520 S Berry, Morganfield, Ky 42437 PH 502-389-3121 after 5

P EI	G/C N stemmed ice cream	25
P EI	G/C Sweetmeat top finial repair	25
P EI	Vintage punch cup	15
P EI	Stork & Rushes punch cup	12
M EI	Butterflies bon bon	25
M EI	Vintage mug	12
M EI	Butterfly & Berry pinpoint at base tumbler	12

Clifford Decker, RD 1 Box 209, Whitney Point, N Y 13862 PH 607-692-3762

M GI	Brooklyn Bridge bowl	185
M EI	Star Medallion tumblers 5 ea	20
M EI	Hobstar butter cover only	25
M EI	Grape wine decanter orig stopper	80
M GI	Stork ABC plate	40
M GI	Pony bowl	60
M EI	Stag & Holly bowl large	65
M EI	Grape & Cable banana boat	165
M EI	Multi Fruit punch set bowl-base-5 cups	400

Gil Corriveau, Box 5, Sturbridge, Ma 01566

IB EI	Fentons basket	45
P EI	Floral & Grape water pitcher	150
M EI	Singing Bird table set butter damaged	150
M EI	Imperial Grape wine decanter	60
G EI	Singing Birds tumblers ea	30
M EI	G/C 9" plate	45
P EI	Springtime butter base N	60
M EI	Peacock at Urn goblet	30
G EI	Pansy Spray dresser tray	50
P EI	Orange Tree breakfast open sugar	40

Mary Kesterson, 3020 Mesa Rd, Willow Park, Tx 76086 PH 817-441-8410

PM EI	Sailboat 6" bowl	38
B EI	Beaded Cable rose bowl	95
B EI	Painted Cherries tumbler	18
IG EI	Draperly vase (N)	50
W EI	Flared basket (N)	105
IB EI	Grape Arbor tumbler (N)	135
M EI	Mikado compote large	145
B EI	Orange Tree Scroll tumbler	40
P EI	Town Pump (N)	450
R EI	Fenton 9 1/4 vase mint	185

30

Adam Hemm, 5738 W Giddings St, Chicago, IL 60630 PH 312-777-3683

M EI	Orange Tree mug large	30
M EI	Windmill dresser tray	45
P EI	Memphis punch cup	30
M GI	Vintage Banded mug	20
W EI	Leaf Rays nappy	50

Dick Wetherbee, 847 Stafford St, Rochdale, Ma 01542 PH 617-892-4420 af 6

G EI	Embossed Scroll 9 1/2 plate	85
M EI	Three Fruits w/basketweave & Vintage 9" ftd bowl	45
AO EI	Draperly rosebowl no harm crack	80
M EI	Dragon & Lotus 9" bowl	35
PO	Panelled 6 x 5 hat small check on rim	15
M EI	Vineyard water pitcher	80
P EI	Raspberry milk pitcher (N) sm check	80
M EI	Sunflower w/Meander back 8" ftd bowl	37
PO EI	Caroline 9" bowl square shape	65
M EI	Poinsettia & lotus 10" 3 ftd bowl	38

Robert Schneider, 10173 Marshall Pond Rd, Burke, Va PH 713-250-8807

B EI	Three Fruit 7 1/2 bowl	36
B EI	Two Flower 10 1/3 3 ftd bowl	62
A EI	Draperly rose bowl	75
A EI	Wreathed Cherry banana boat	105
G EI	Millersburg Blackberry Wreath 7" bowl	36
B EI	Comet bowl	36
G EI	Daisy & Plume rose bowl 3 ftd	55
IB EI	Cracker jar, Three-in-one crack in top	50
A EI	Sunflower 8" bowl	36
B EI	Horse Medallion 7 3/4 ftd bowl	70
SASE for list of old carnival		

31

Helen Nadeau, 18 Thomas Olney Common, Providence, R I 02904 PH 401-521-4581

P EI	Swirl Hobnail rose bowl	250
P EI	Leaf & Beads rose bowl-pattern int	70
P EI	G/C tankard pitcher	650
P EI	G/C tankard tumblers 5 ea	85
P EI	Grape Delight nut bowl 6 ftd	60
G EI	Fine Cut & Roses rose bowl	125
B EI	Fenton Thistle oval bowl	195
B EI	Horse Medallion rose bowl	195
B EI	Apple Blossom Twigs plate	175
P EI	Maple Leaf master ice cream bowl	85

Linda Rivers, 140 N Tropical Trail #6, Merritt Island, Fl 32952
PH 305-453-6237

M EI	Kitten cup	85
M EI	Strawberry plate	85
M EI	Vineyard 7 pc water set	145
R EI	Fine Rib vase 10 3/4	200
PO EI	Honeycomb rose bowl	225
IB EI	Fine Cut & Roses rose bowl	225
AO EI	Leaf & Beads rose bowl chip on collar	135
B EI	Butterfly & Berry tumblers	35
B EI	Peacock at the Fountain orange bowl	250
B EI	Stag & Holly 11" bowl	225

Omer Sweeney, 140 N Tropical Trail #6, Merritt Island, Fl 32952
PH 305-453-6237

M EI	Horses Heads 7 1/2 collar base bowl	65
M EI	Stag & Holly rose bowl	195
M GI	Butterfly & Berry 7 pc water set	265
M EI	Horses Heads rose bowl	120
M EI	Northwood G/C shot glass	150
M EI	Northwood G/C whiskey decanter	675
M EI	Kittens 4 side bowl	85
M EI	Peacock & Urn plate	120
M GI	Diamond & Daisy tumblers	40
M EI	Three Fruits plate	85

WANTS

Maxine Twedt, Box 904, Lancaster, Ca 93534

Little Flowers any color
G Peacock Tail bowl small
Little lacy edge bowls (baskets)
Pinecone plate 6"

Mrs. L. E. Ashley, R 3, Potsdam, N Y 13676

G Springtime complete butterdish or base

Don Moore, 2101 Shoreline Rd., Apt 462, Alameda, Ca 94501 PH 415-521-4592

W Vintage punch cups goes with Many Fruits set
G Heavy Grape punch cups has leaf in bottom
P Heavy Grape punch bowl, base and cups
IG Peacock at the Fountain punch cups
Any pastel or any ribbed Tornado vases
R Fenton Peacock & Urn bowl

Charles E Vaughn, 914 8th Box 522, Baldwin City, Ks 66006 PH 913-594-3710

A Wreath of Roses punch bowl base
M Lattice & Daisy pitcher
M Lustre Rose 9" plates need 5
M Lustre Rose sugar bowl with lid

Al Rettke, 14226 E. 143rd Lane, Burnsville, Mn 55337 PH 612-432-7489
after 3:30

AO N's Peacocks bowl or plate
IB N's Peacocks bowl or plate
AO Singing Birds mug
IB Singing Birds mug
L Singing Birds mug

Lydia Caudle, Rt 1 Box 87, State Rd, N C 28676 PH 919-874-2519

P Raspberry pitcher or will sell tumblers
B Fluffy Bird pitcher or will sell tumblers
IB Grape Arbor tumblers
G Dandelion tumblers N
P Oriental Poppy pitcher
Any good red Aqua Opal or pastel colors

A. C. Dickey, 144 Chandler St., Vacaville, Ca 95688

P Springtime tumblers need 4
P Wishbone tumblers need 3

Jessie May Bardwell, 724 Minnesota Ave., McComb, Mi 39648 PH 684-2455

P G/C sugar bowl & lid with thumbprint bottom goes with table set
B Floral & Grape tumblers this for the varient water set

Annie L. Wall, RR 1 Box 77, Horseshoe Bend, Ida 83629 PH 208-584-3411

Large Kangaroo cake plate
P Kangaroo dish-Swan-Magpie-Emu
DM Lustre Rose covered sugar-creamer must be old

Charles Dodson, 1116 S. Edgewood St., Arlington, Va 22204

M Orange Tree punch cups
M G/C powder jar top
M Twins punch bowl top

Patricia Craver, Box 8015, Allandale, Fl 32023 PH 904-788-5315

W Orange Tree punch base
P G/C (N) butterdish bottom

Dorothy Thomason, Rt 1 Box 51, Lipan, Tx 76462 PH 817-646-2449

P Imperial Grape stopper for decanter
EB G/C 6" ruffled berry dishes (N)
G G/C 6" ruffled berry dishes (N)
G Imperial Grape wines

Durwood Evans, 617 E 18, South Sioux City, Ne 68776 PH 402-494-5269

M Imperial Grape tumblers
S Imperial Grape wine glasses
G Imperial Grape stopper for decanter

Cato Hightower, Rt 1 Box 64-A, Lipan, Tx 76462 PH 817-646-2700

- P Grape Delight 6 ftd rose bowl flat top
 - W Grape Delight 6 ftd rose bowl flat top
 - W Grape Delight 6 ftd nut bowl
 - P Imperial Grape wines
 - M Imperial Grape wines
 - P G/C 6" berry dishes ruffled (N)
 - P G/C cracker jar bottom (N)
- Copy of "Carnival Glass Collectors Encyclopedia by Sherman Hand

Mary Kesterson, 3020 Mesa Rd, Willow Park, Tx 76086 PH 817-441-8410

- M Brooklyn Bridge
- IB Bushel basket round
- IB Embroidered Mums bowl (N)
- IG Peacocks plate (N) or any other color
- IG Fruits & Flowers bon bon stemmed or any other color
- B Round Up bowl
- PO Round UP plate or any other color
- AO Peacocks bowl

Adam Henn, 5738 W Giddings St., Chicago, Il 60630 PH 312-777-3683

- M Diamond & Sunburst decanter complete
- M Octagon cordials
- M Star & File wines
- M Flute & Cane wines
- M Tulip & Cane wines
- M Four Seventy Four wines
- M Beaded Shell butter base
- M Waterlily & Cattails butter base
- G Singing Birds sugar lid
- P Singing Birds sugar base



PLEASE MAKE CHECKS PAYABLE TO H.O.A.C.G.A.
AND SEND THEM TO THE SECRETARY.

Lucile Britt
3048 Tanarak Drive
Manhattan, Kansas 66502

WILL PICK UP:

_____ 1982 Souvenir Corn Vase (s) at
\$40.00 each.

PLEASE MAIL:

_____ 1982 Souvenir Corn Vase (s) at
\$40.00 each. Add \$3.00 postage
for each corn vase.

PLEASE PRINT FULL NAME AND ADDRESS

LIMIT 2 PER COUPLE OR SINGLE MEMBERSHIP
Please return this order form along with
your payment in full to the Secretary, at
the address above.