

H. O. A. C. G. A.
DONALD E. KIME
BULLETIN SECRETARY
JUL 13 1982 W. 4th ST.
HAYSVILLE, KANSAS 67060

1982

JULY						
S	M	T	W	T	F	S
			1	2	3	
4	5	6	7	8	9	10
11	12	13	14	15	16	17
18	19	20	21	22	23	24
25	26	27	28	29	30	31





**Heart of America
Carnival Glass Association, INC.**

MEMBERSHIP JUNE TO JUNE
\$10.00 PER COUPLE OR SINGLE

PUBLISHED 15th OF
EACH MONTH

PRESIDENT: GEORGE O. MCGREW JR.
6300 WOODWARD
OVERLAND PARK, KANSAS 66204
913-262-8822

VICE PRESIDENT: GEORGE BOLLES
5204 CATALINA
SHAWNEE MISSION, KANSAS 66205
913-432-5438

TREASURER: ELIZABETH BOLLES
5204 CATALINA
SHAWNEE MISSION, KANSAS 66205
913-432-5438

SECRETARY: DIANE TREFF
13646 LEAVENWORTH ROAD
KANSAS CITY, KANSAS 66109
913-721-2917

BULLETIN SECRETARY: DONALD E. KIME
1202 W 4th ST.
HAYSVILLE, KANSAS 67060
316-524-3123

ORDER FORM FOR 1982 H.O.A.C.G.A. SOUVENIR



PLEASE MAKE CHECKS PAYABLE TO H.O.A.C.G.A.
AND SEND THEM TO THE SECRETARY.

Diane Treff
13646 Leavenworth Road
Kansas City, Kansas 66109
PH 913-422-7631

PLEASE MAIL:

_____ 1982 Souvenir Corn Vase (s) at
\$40.00 each. Add \$3.00 postage
for each corn vase.

PLEASE PRINT FULL NAME AND ADDRESS

Please return this order form along with
your payment in full to the Secretary, at
the address above.

H.O.A.C.G.A. JUNE MONTHLY MEETING

The H.O.A.C.G.A. met June 27, 1982, for their annual meeting and picnic, at the home of Davis and Viola Shikles, 606 Leslie Drive, Independence, Missouri. After a wonderful pot luck meal, President George McGrew called the meeting to order at 2:00 P.M.

Upon the absence of the Treasurer, Elizabeth Bolles, the treasurers report was read by the Secretary. The report was approved as read and placed on file for audit.

The Secretary read the minutes of the last monthly meeting. The minutes were approved as read.

President McGrew summarized the results of the last Board meeting, held June 1, 1982. Those results were as follows:

Janet Zahn has agreed to accept the position of convention chairperson for 1983.

Ray Notley has graciously accepted to be our guest speaker at the convention, upon approval of the Board. (Upon presentation of this matter to the Board and members present at the monthly meeting, it was decided that President McGrew send Mr. Notley a letter of confirmation).

To eliminate paperwork, confusion, and postage we should have one member in charge of mailing notebooks, bolos, prior years' souvenirs and misc. Davis Shikles has accepted this position.

Souvenir Chairman Roland Kuhn is to order 375 table favor mugs in marigold.

To further promote our club, we will expand our booth during National Carnival Glass Week to other shopping malls.

A decision on the suggestion of sending letters to those members who have not yet purchased a corn vase was tabled and will be ruled on at a later date.

Guidelines for the awards for the educational contributions to the bulletin were determined.

After President McGrews' summary of the Board meeting, the monthly meeting continued with a motion made by Rosa Grissom to eliminate

the type of awards we have given in the past, for educational articles contributed to the bulletin, and to use certificates instead. The motion was seconded by Margie Loftus. The motion passed.

President McGrew announced that there had been little response on the questionnaire he had placed in the bulletin. Most seemed favorable, and access to the room displays number one on their list of priorities.

Robert Grissom made a motion that we offer the convention auction to Mr. John Woody this year since Tom Burns had the auction last year. The motion was seconded by Ralph Mullins. The motion did not pass.

After much discussion it was decided to offer the convention auction to any auctioneer, provided that the auctioneer has a good selection of select carnival glass to auction.

Selection of the 1983 Souvenir was discussed and no decision was made at this time. Members are to bring their ideas and sketches to the next monthly meeting.

The next meeting will be at the home of Mr. and Mrs., Vaughn, 914 8th Street, Baldwin City, Kansas. There will be a map elsewhere in the bulletin on the directions to the Vaughns' home.

A motion was made to adjourn the meeting. Our next meeting to be July 25th, 1982.

Diana L. Treff, Secretary

George O. McGrew, President

Buying a 1982 Souvenir Ice Blue Corn Vase is your share in support of your club. Dues alone will not support the cost of the bulletin. Please remember your support is returned in activities at the convention.

DUES

Please remember your dues for 1982-83 are now due. As of August 1, 1982 I will be ordering only enough bulletins to send to paid up members. If you are not paid up you will be missing out on the bulletin for the month of August. The dues run from June 1 to June 1. Please mail them to the Secretary, Diane Treff, 13646 Leavenworth Road, Kansas City, Kansas 66109 as soon as possible. The Dues are \$10.00 per year.

A number of for sale and want items did not make it in the June bulletin simply because I received them too late to be put in. Please be reminded they must be to me by the first of each month. I send all material to the printers on the first of the month.

Many of you have not purchased your 1982 souvenir corn vase, which is the ice blue CORN VASE. It is a nice piece of glass and is of a very limited supply as is all of our souvenirs. Thru the sale of these souvenirs we are able to provide the many activities at our convention in return to you. Order your souvenir now.

JULY MEETING
DIRECTIONS TO THE VAUGHNS

Take I-35 South to 56 Highway 56 go west on Highway 56 to Baldwin City, Kansas. Address 914 8th Street. Meeting will be at 2:00 P.M.

I-35 South

Highway 56 West

Water Sets - H.O.A.C.G.A. Pattern Notebook

Listed below are the Water Set patterns to be included as the next section to the H.O.A.C.G.A. pattern notebook. This will conclude the pressed patterns. The next section after this, will be the painted or Enameled Sets.

- | | |
|------------------------|----------------------------------|
| Cathedral | Ranger |
| Jewelled Heart | Rex |
| Lattice & Daisy | Ribbed Swirl |
| Lattice & Grape | Rising Sun |
| Leaf Tiers | Robin |
| Lily of the Valley | Rose Garden |
| Luster & Clear | Scale Band |
| Luster Rose | Singing Birds |
| Maple Leaf | Soda Gold |
| Marilyn | Springtime |
| Milady | Star & File |
| Morning Glory | Starflower |
| Multi Fruits & Flowers | Stork & Rushes |
| Northwoods Near Cut | Strawberry Scroll |
| Northwood Cherry | Swirl |
| Northwood Raspberry | Ten Mums |
| Northwood Peach | Tiger Lily |
| Octagon | Vineyard |
| Octagon Variet | Vintage Banded |
| Orange Tree, Footed | Waterlily & Cattails (Northwood) |
| Orange Tree Orchard | Waterlily & Cattails (Fenton) |
| Orange Tree Variet | Windmill |
| Oriental Poppy | Wine & Roses |
| Palm Beach | Wishbone |
| Peacock At Fountain | Wisteria |
| Perfection | Wreathed Cherry |
| Quill | Waffle Block |
| Rambler Rose | Wide Panel Thistle |
| | Sunflower & Diamond |

I need photographs of the following Sets, a Set for this purpose is a Pitcher and only one Tumbler. If you have a set I would very much appreciate a 4x5 glossy colored photograph of the set. If you know who might have the set, please let me know.

Cathedral
Cherry Cable and Thumbprint
(Northwood Cherry)
Luster & Clear
Morning Glory

Northwood Near-Cut
Octagon Variant
Rex
Rose Garden

The first section of the Water Sets were printed previously and are now available to any member that wants them. If you know of any Water Sets that are not listed please let me know. We want to make this as complete as possible.

If you have previously purchased the Notebook and have not ordered your first section on Water Sets, you may order yours by sending \$1.00 for the postage to the Secretary Diane Treff. If you have not purchased your fillers, you may order that also from the Secretary Diane Treff for \$8.50.

Robert Grissom
Notebook Chairman

NOTE:

Order your 1982 souvenir now. Remember the dues do not even pay for the expense of the monthly bulletin.



Kenny James, a long time collector of fine carnival glass, passed away during the month of June. His wife Helen was the Bulletin Secretary for a number of years. Kenny was able to attend the convention this year and he enjoyed visiting with his many friends there. He attended all of the events and will be missed greatly by his family and friends. We send our sympathy to his family.

Also word was received that Arnold Preheim passed away.

July 8-9-10
INTERNATIONAL CARNIVAL GLASS CLUB, Midway Motor Lodge, 300 South Main, Elkhart, Indiana

July 29-30-31
AMERICAN CARNIVAL GLASS CLUB, Imperial House Motel South, Dayton, Ohio 5 miles South of Dayton on I-75

August 19-20-21
PACIFIC NORTHWEST CARNIVAL GLASS CLUB, Vance Tye Motor Inn, Olympia, Washington

October 16-17
AIR CAPITAL CARNIVAL GLASS CLUB, mini-convention, Sheraton Inn-Wichita Airport, I-235 & US 54 5500 West Kellogg Drive, Wichita, Kansas

EDUCATIONAL TUMBLER SERIES

by JOHN & LUCILE BRITT



FOUR-SEVENTY-FOUR--AN IMPERIAL PATTERN

"Four-Seventy-Four" is a pattern that is well known by almost all carnival glass collectors. When carnival glass was made and sold in huge quantities back in the 1908-1920 period a great many of the patterns were listed in the glass company catalogs and wholesale brochures by only a number to identify the pattern. Four-Seventy-Four is one of them and was listed as Imperial No. 474. We find that this pattern was first listed by Imperial in about 1915. Mrs. Hartung, who was one of the earliest researchers in this beautiful glass and who names a great many of our carnival glass patterns, stated that she could see no reason to dream up a fancy name for this one, so merely called it "Four-Seventy-Four". The name stuck and it is widely known by that name today.

The Imperial Glass Company led the field in the imitation cut glass type of carnival glass, and this is one of their many intaglio patterns. Most of Imperial's imitation cut glass tumblers have a collar base, but the Four-Seventy-Four tumbler does not. The tumblers have a sunburst type of figuration pressed into the underside of their base. They are rather

easily found in marigold, but to find one in purple is very hard. In my opinion, the tumblers are even harder to find in Helios green. I have only seen two of these in that color. A tumbler is also known to exist in aqua. The "Four-Seventy-Four" punch set and cups are also hard to find in purple and green, while they are quite common in marigold. Goblets, wines and cordials are also known in this pattern, but only in marigold. The goblet is scarce while the wine and cordial are very rare.

It is interesting to note that "Four-Seventy-Four" water pitchers were made in two different sizes and that it was also made in a milk pitcher. The milk pitcher is not easily found. Only occasionally one will come up for sale.



OLD FOUR-SEVENTY-FOUR TUMBLER ON LEFT

Actually, the new tumbler pictured on the right is not the "Four-Seventy-Four" pattern at all, even though it is called "Four-Seventy-Four" by many collectors. The tumbler on the right is known as Mayflower, by "New Carnival" glass collectors. It was produced by Imperial in about 1966 in marigold and smoke. Note that it has a collar base and while similar to Four-Seventy-Four, it is distinctly a different pattern. The new Mayflower tumbler has a rayed star pressed into the underside of its base. It does not contain the hobstars around the outside of the

tumblers that is found on the true "Four-Seventy-Four". These new Mayflower tumblers are marked with the super imposed "I.G." trademark on the inside bottom of the tumbler.

The only new "Four-Seventy-Four" tumblers in which I am aware, are those that were part of the 250 water sets that Joan Westerfeld of Kansas City had made in 1977. These are of the true "Four-Seventy-Four" pattern. The color is a beautiful ultra blue. On the bottom of the tumblers you will find a peanut and the words "A New Spirit '77" which was a phrase used by former President Jimmy Carter. The base also contains the "I.G.". In my opinion, this is one of the finest of the new tumblers and is easily recognized from the old "Four-Seventy-Four" tumblers.



M124 Tumbler

M124 1/2 Gallon Pitcher

OLD FOUR-SEVENTY-FOUR PITCHER & TUMBLER



NEW MAYFLOWER PITCHER & TUMBLER

This article featuring Imperial's "Four-Seventy-Four" pattern is No. 54 in this series. Next month we will cover one of Northwood's famous patterns called "Acom Burrs", which is one of the most ornate of all tumbler patterns.

PICTORIAL PATTERN PARADE

by JOHN & LUCILE BRITT



VERY PRETTY IMPERIAL GRAPE GOBLET

Goblets and other stemmed pieces such as wines, cordials, sherberts, etc., are becoming more popular every year. Many more collectors are looking for these attractive pieces than ever before. "Imperial Grape" is one of the patterns that was made in goblets as well as wines. Shown above are goblets in three of the hardest to find colors in this popular pattern--namely Smoke, Amber and Clambroth. Amber is the hardest color to find, but smoke and clambroth goblets are not at all easy to locate. They also were made in marigold, purple, amethyst and helios green. Marigold is the most plentiful color but there were not many made in that color either. You do not see one in helios green or dark purple very often. The Imperial Grape goblet is 5 1/2 inches tall with a top diameter of three to three and one quarter inches. The base is three inches wide. The little wines in the Imperial Grape pattern on the other hand are much smaller being only 4 inches tall and almost two inches wide at the top.

The "Imperial Grape" goblets were reproduced by Imperial, but are very

to tell from the old ones. I have seen new goblets in marigold and smoke. To tell the old from the new, just remember these important facts. (First) the new goblet is signed with the super imposed "I.G." on the bottom of its base. The old one does not have a mark of any kind. (Even if some sharpie does grind the "I.G." off to make people think the piece is old, the following differences will tell you whether they are old or not.) (Secondly) the bottom of the base on the new goblet is smooth with stippling. The old one has a 24 point rayed star on its base. (Third) the old goblet has the grapes and leaves pattern on the inside and also contains a band of ribbing just above the grapes. I believe you can detect this ribbing from the picture shown above. In contrast the new goblet is completely smooth on the inside. In other words the new one has the pattern on the outside only, while the old one has a pattern on both the inside and outside. (Lastly) the threading on the stem comes down only to the base on the new goblet-- while it extends completely out to the outside edge of the base on the old one. If you will remember these important pointers you will definitely know whether the goblet in this pattern is new or old. I would like to add here, that I have nothing against new carnival glass, so long as it is not made to fraud or fool the collector, such as the use of an "N" on new pieces. I personally like new carnival glass tumblers but display them separately from the old. This is also true with goblets. We think the "Imperial Grape" goblets are very attractive and collectable and you can be sure that you have an old one if you remember the above description.

PINEAPPLE

Sowerby Pattern Number 2349

Named by Mrs. Hartung (Vol 4., page 31)



This delightful pattern is a great favorite of English collectors and is much loved by many American enthusiasts. It was first made in crystal in 1920 so it varies somewhat from the other patterns we have looked at so far in as much that it is not a revived Victorian design. The Sowerby carnival output varies so much in design and finish for the simple reason that none of their designs were made with an iridised finish in mind. Unmarked Sowerby carnival glass has tempted attribution by guesswork rather than genuine clairvoyance. However Pineapple takes iridescence very well due to the refractive prism motifs and the reflective facets of the near-cut body. Although originally made in a very full range of shapes only the following were made in carnival: (the numbers in brackets are the quaint original wholesale numbers)

- | | |
|------------------------------------|--|
| Covered Butter (2349B) | Rosebowl, Flat (2349) |
| Sugar Bowl, Flat (2349 1/2) | Sugar Bowl, Flat, Crimped (2349 1/3) |
| Sugar Bowl, Stemmed (2349 1/2 LEG) | Sugar Bowl, Stemmed, Crimped 6/2349 1/4) |
| Candy Dish (2349 FLANGE) | Creamer (2349M) |

The stemmed English sugars are often incorrectly described as compotes or comports. More social history explains this. It was socially acceptable to use ordinary granulated sugar from the flat sugar bowls with

a spoon. It was assumed that "visitors" were used to grander things and they would be offered lump or cube sugar from the stemmed sugar with a pair of tongs. Simple etiquette you may say but tea-time in England can still range from An enamelled mug to the grandest possible occasion with a silver tea set and cups and saucers of the finest porcelain imaginable. The humble folk that bought carnival would keep a stemmed sugar just for use when visitors came. They would also keep a "good" tea set. They did not have much money but they did things properly and with great dignity. People who dismiss Carnival as cheap "rubbish" often change their minds when told of the interesting social background of much of this glass.

Everybody's favourite in this pattern is the creamer which Mrs. Hartung illustrates so well in her pattern book No. 4. She was so impressed by its quality that she assumed it to be Millersburg, the highest accolade she could give at that time. Mrs. Hartung recognised the excellence of the glass and knew it was obviously of good pedigree. This is to her credit.

The Sowerby trademark appears erratically on this pattern and the known colours in the shapes listed above are: marigold (SUNGLOW) and amethyst and blue (RAINBO LUSTRE). For some reason or other the butter (2349B) was only made in marigold. The interior pattern is generally a simple central motif of three concentric rings with radiating smooth ribs. It was iridised in 1927 and discontinued in 1928 except for two small nappies which went on in flint until 1931 when the pattern disappeared completely. A very short life compared with some other Sowerby patterns.

H.O.A.C.G.A. NOTEBOOK AMENDMENT TABLE SET NO. 34

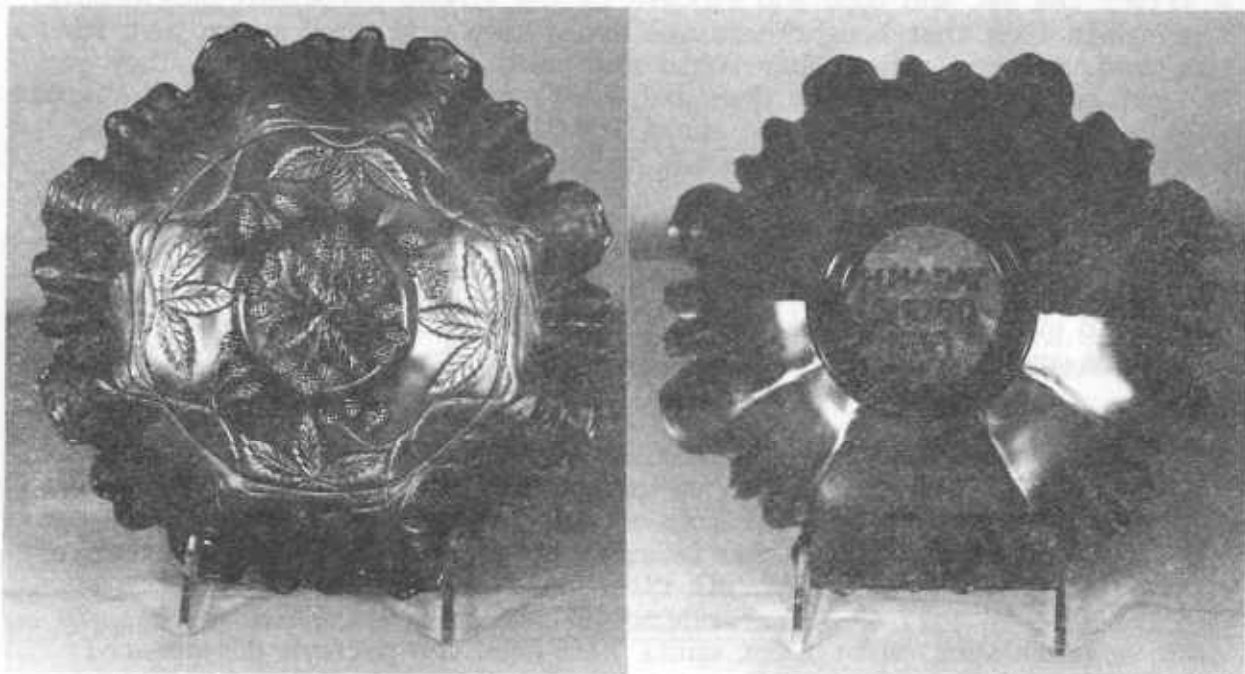
As you can see this shows three items from the Pineapple range. From left to right, 2349M, 2349B and 2349 1/3. Replace "Maker unknown" with "Made by Sowerby's Ellison Glassworks, Gateshead, Co. Durham, England". The note that the maker is "possibly" English is confirmed.

(Author's copyright reserved 1982)

Ray Notley
29 Windsor Road
Wanstead
London, England E11 3QU

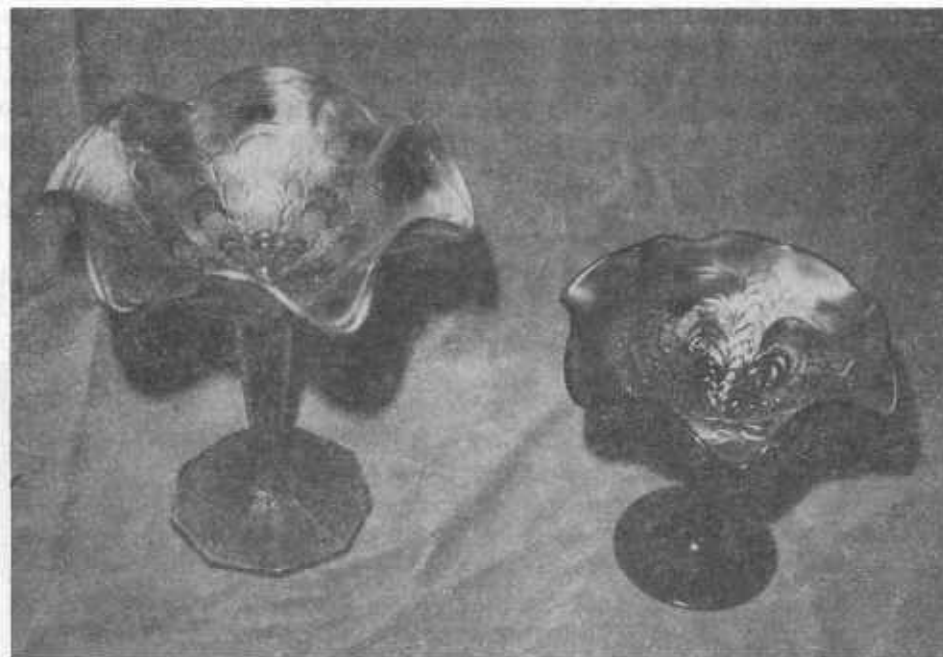
Carnival Cameos

BY DONALD MOORE



H. MADAY AND CO. ADVERTISING BOWL (FENTON)

This is the only example of this advertising bowl that I have seen or heard about. The pattern is Wild Blackberry, which is quite scarce in its own right. It is amethyst and measures 8½". The advertising on the collar base reads "H. Maday and Co. 1910". Most advertising pieces are 6 inches in size. The "Spector's Department Store", "Old Rose Distillery" and "Coolemee, N.C." pieces are all 9" plates. The piece shown here is the only one I know of that is found on a bowl this size, except for the "Horlacher" logo that is sometimes found on the 8½" Thistle bowl. The "Bernheimer" bowl is the 10" Millersburg Many Stars.



ROSALIND

This beautiful pattern, called Drape and Tie by some, is best known in large 10" bowls on a collar base; either ruffled or ice cream shape; however Rosalind can also be found on a rare 5" bowl in green as well as the interior pattern of the famous Dolphins compote and three of the four compotes illustrated.

In photo number one we show the standard 6" ruffled compote, found in marigold, amethyst and green as well as the ruffled tall 8" compote, found in marigold only. Please note the stems and bases of these compotes are not the same. All are rare.

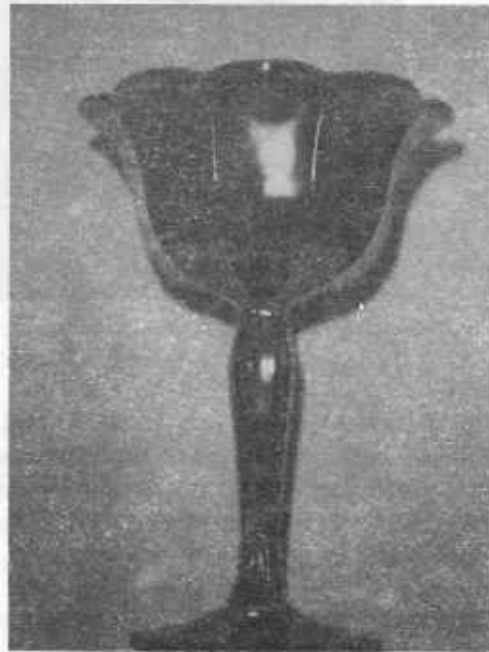
In photo number two, we show the very rare 8" jelly compote in amethyst. This compote recently sold in the Wilson sale and brought \$1200.00. No other colors are reported at this time, however other probably exist.

Photo number three is not a Rosalind compote but one called "Millersburg Tulip". The size and shape are identical to the tall Rosalind jelly compote, but the interior is plain. Colors thus far known are marigold, green and amethyst, with one example in each color reported.

I cannot stress too greatly the desirability of all Rosalind items as well as the tulip compote. Most item (except bowls) are of the finest radium finish and in each case, the mold work is superior.



ROSALIND



MILLERSBURG TULIP

AUCTION YEAR

We have to say we have been to more carnival auctions so far in 1982 than we normally have for a whole year or maybe even longer. It started out with the fantastic Millersburg Collection of the Jack Wilsons Feb 27th. We doubt that will ever be equalled as to the rare Millersburg items. The threat of ice and snow did not keep anyone away which made it a very successful auction and a wonderful time for Carnival enthusiasts.

Since then we have been to three or four more at New Philadelphia, Ohio which is fortunate for us by being about 165 miles away. We usually do not buy a thing but lately have managed to get a few pretty pieces with no where to put them. Of course we forget that when we are bidding. We got Wilsons Hobstar and Feather punch bowl set-for years we had a good bowl and needed the base and cups. At another auction we got two of the big funeral size green vases marked (N) in a flute pattern. Also a pretty ruffled hat shaped dish in the reddest color one can imagine. Another time lucky or not, we got the electric blue Good Luck bowl and a whimsy Circle Scroll hat shaped piece in marigold. While at H.O.A.C.G.A. Convention we got from a room a very unusual shaped Kitten piece which I plan to write about later. We also have added a pretty green ruffled Good Luck low bowl. Though it seemed impossible we did some magic maneuvering and got them all squeezed in somehow.

We have been to Fentons for two days with Dick and Emma Tilton getting the A.C.G.A. "Millersburg Fish" pattern spittoon souvenirs made in a lovely shade of peach opal. We think they are especially pretty and Emma says orders are coming in fast with well over 300 before June 1st. Only 500 are made so better not delay if you want one. Also made were some very unusual whimsys for the auction at the convention. It is July 29-30-31st at Dayton, Ohio and everyone knows how the Dayton Carnival Club goes all out when hosting a convention.

Busy days are ahead with the I.C.G.A. Convention at Elkhart, Ind., July 8-9-10th. Both these Conventions will also have carnival auctions. Tom Burns has several more auctions coming up soon in New York and will be sorry to miss them. However he will be doing the A.C.G.A. and I.C.G.A. so we hope to be there for those. He is a good auctioneer and we can well remember him as only a boy coming to the conventions. Now he is a fine young man doing what he loves best. Anyone who can go will enjoy it and meet some of the nicest people in all the world.

Grace & Byron Rinehart
Charleston, W. V.

MINI-JAMBOREE SUCCESS

The Happy Hunters are very happy because so many of you attended their Mini-Jamboree at Holiday Inn, Chester, Virginia, on May 15 and 16.

As was promised, much glass was on hand, although Mr. Caudel from State Road, N.C. and Mr. Harry Heatwole of Dayton, Va. were unable to be present due to illnesses in their families.

Sixty Four persons registered for the event with the Carnival Glass Collectors being located in the same room area. The dinner was delicious and as attended by 58 persons. We heard no complaints about the food or the price. The special room rates given by Holiday Inn were appreciated.

Carnival Glass Collectors seem to generate their own entertainment, so time was spent visiting in the rooms, talking and selling glass. The hospitality room was a favorite gathering place throughout the day and into the night. Wake-up coffee was served Sunday morning in the hospitality room as goodbyes were said before we went to breakfast in the dining room.

Mr. Berry Wiggins came to our aid on short notice and served as auctioneer for our auction, and much fun was had during the selling of glass which had not been viewed in rooms. All monies from the auction went to the owners of the glass.

We heard many pleasant comments about this event and also about what to do "next year". With so much pleasure and seeing so many good Carnival Glass Friends it is hard to decide against "next year".

Bernice Allen
Hopewell, Virginia

At the Tom Burns auction held recently in New Philadelphia, Oh we have only 3 items with prices reported to us. Perfection pitcher \$3300, Farmyard bowl \$2800 and a Christmas compote \$1800. Seems as though prices holding well.

The Northern California Carnival Glass Club held its meeting April 17, 1982 at Dunfeys in San Mateo, Ca.

The Revised By-Laws as approved by the Board were presented to the club for approval and were approved with one amendment.

The Convention of the N.C.C.C. will be held at Dunfeys in San Mateo, California June 24, 25, and 26. An open house will be held at the home of Don & Connie Moore 2101 Shoreline Drive, Apt 462, Alameda, Ca.

The regular meeting will be held Friday June 25, 1982.

Thomas E. Darter
Secretary

The May 16th meeting of the Tampa Bay Carnival Glass Club was hosted by Shirley and Tiny Conyers at thier Madeira Beach home. Shirley and Ruby Pitt acting as co-hostesses served a delicious buffet luncheon. In the absence of the President, who was hospitalized, and the Vice-President Shirley not only ran the business meeting but took the minutes and presented a program on Carnival bags and purses. With this display of versatility Shirley maintained her rating as a great carnival glass enthusiast.

Plans were discussed for fund raising to help in the presentation of the second annual Lose Your Heart To Carnival Glass Jamboree to be held in Lakeland, Florida in February 1983.

Following a summer recess the next regular meeting will be held in September.

Arthur I. Smith

So interesting to read about all your activities, new members, and the exciting carnival finds.

Puts us into a whole new world. We enjoy the bulleting with the pictures in it so very much.

Hope we can make it to a convention some time.

Melby & Elsie Dietrick
Washington

No carnival of any worth shows up at dealers shops, antique shows or flea markets, etc. What there is of ordinary run of the mill patterns, damaged pieces, poor color-all at rare mint and exceptional prices.

If it had not been for some members of H.O.A.C.G.A. such as Betty and Wes Strain and Lorene & Albert Sebaugh-especially Betty Strain who has spent countless hours "teaching me carnival", my collection would be poor or non-existent. So I have nothing but praise for H.O.A.C.G.A. and its members. I hope I get to meet, buy, swap, show off carnival in the coming months.

Byron Davidson
Missouri

WELCOME NEW MEMBERS

M/M Arlen Merritt, Houston, Tx
Mrs. Arnold Retke, Grand Forks, No Dak
M/M Benjamin Miller, Ickesburg, Pa
M/M Raymond Haas, Emmaus, Pa
M/M Carl Levickas, Palmyra, N Y
M/M Arthur Borucki, Birmingham, Mi
Margaret Maynard, Hampshire, Ill
Polly Chapman, Aiken, S C
Barbara Hobbs, Pinellas Park, Fl
Ruby Pitt, St. Pete, Fl
Naomi Calkins, Clearwater Fl
M/M Quentin Schriener, Wright City, Mo
M/M Carey Quinn, Warner Robins, Ga
M/M Morris Roberts, Champlin, N Y
M/M Don Grant, Woodville, Ontario, Canada
M/M Harold Decker, Nineveh, N Y
Capt/M Lance Hudnall, Rome, N Y

OLD CARNIVAL GLASS LIBRARY

CARNIVAL GLASS RARITIES- A color line approach. Lists the top 10 rarities in each color-PLUS COMPLETE RARITIES PRICE GUIDE- 40 pages of black and white pictures-SPECIAL SECTION ON WHIMSEYS-Order today-\$8.50 postpaid. Don Moore, 2101 Shoreline #462, Alameda, Ca. 94501

"The Shape of Things in Carnival Glass", 110 pages, 200 items in full color, \$9.95-Don Moore, 2101 Shoreline Drive, Alameda, Ca 94501

"Carnival Glass Series", each book has 100 different patterns illustrated and described-10 books in the series, books 1,2 and 3-\$3.00 ea, books 4 thru 10-\$3.50 ea. New edition 1981-82 price guide-\$5.00 pp, Northwood Pattern Glass-clear, colored, custard and carnival-\$9.95 plus 50¢ postage. Marion T. Hartung, Box 69, Emporia, Kansas 66801

"Carnival in Lights", A full color book on Carnival Lighting, including Gone With The Wind Lamps, Candle Lamps and shades-price guide included-\$11.95 plus postage, Helen Greguire, 103 Trimmer Road, Hilton, New York 14468

"Carnival Glass Tumblers"-Author Richard Owens-order from Mr. Don Brown, Wallace-Homestead Book Company, 1912 Grand Ave., Des Moines, Iowa 50303

"Imperial Carnival Glass"-The Early Years"-\$9.95, "Fenton Carnival Glass-The Early Years"-\$9.95, New price guide 1981-82 edition-\$3.95-"Millersburg The Queen of Carnival Glass"-\$8.95, "Rarities in Carnival Glass"-\$8.95, Author Bill Edwards. The books may be ordered from Collectors Books, Paducah, Kentucky

"Carnival Glass Price Guide", Sherman Hand & Charlotte Williams-\$5.95 pp. Order from Sherman Hand, 127 Olympic Circle, Vacaville, Calif 95240 or Charlotte Williams, 630 N Lower Sacramento Rd., Lodi, Calif 95240

"Fenton Glass-The First 25 Years", 144 pages, 72 in full color, more than 400 items pictured in Fenton's carnival and iridescent "stretch" colors, rare catalogue reprints (some in color), a complete history of the factory's early years, from 1907 to 1932, \$15.95 for softcover edition with price guide, \$20.00 for limited edition hardbounds. Order from the Author, William Heacock, P.O. Box 27037, Columbus, Ohio 43227

Angela Hallam's 52 page fully illustrated paperback-first book to tell you about the English-made Carnival-\$4.85 surface postage, air mailed \$5.85. Order from Wise Books, 82 Chart Lane, Reigate, England, RH2 7EA.

POLICY FOR ADVERTISING IN H.O.A.C.G.A. BULLETIN

We repeat the guide lines set up in years past for the benefit of the new members and as a reminder to all. Member families may advertise ten (10) FOR SALE and ten (10) WANT ads each month free of charge.

All advertisements, announcements, letters or any other item to be printed, must be received by the Bulletin Secretary by the 1st of the month to insure being published the month received.

1. In the absence of any chips or cracks being noted the piece will be considered perfect.
2. A 5 day return privilege at buyer's expense providing it is not as advertised.
3. All postage and insurance extra.
4. All for sale items must be priced - no bid items will be published.
5. The H.O.A.C.G.A. and paper do not accept any responsibility for items bought or sold thru this paper.
6. Marked Northwood pieces - please use (N).
7. Only OLD CARNIVAL GLASS items will be published.- The only new Carnival items accepted are the H.O.A.C.G.A. souvenir items.

For accuracy of description, the following is recommended:

A - Amethyst	PM - Pastel Marigold
P - Purple	R - Red
G - Green	C - Clear
B - Blue	IG - Ice Green
CB - Cobalt Blue	IB - Ice Blue
M - Marigold	AMB - Amber
PO - Peach Opalescent	S - Smoky
AO - Aqua Opalescent	W - White
EI - Excellent Iridescence	L - before color means light
GI - Good Iridescence	D - before color means dark

EXAMPLES: IM EI Brooklyn Bridge bowl \$250.00
 DP EI Good Luck bowl (N) small
 base chip 75.00

It would be appreciated if you will please use these codes suggested, it will be less confusing to everyone and also be helpful in the typing and set up of the bulletin.

FOR SALE

A. M. Pennetti, 23 Nancy Lane, Ft. Myers Beach, Fl 33931 PH 813-463-3918

A EI	G/C 7 pc berry set N	265
G EI	Millersburg Nesting Swan bowl	235
M EI	Star Medallion milk pitcher	45
M EI	Imperial Grape water set 7 pc	150
M LI	Stream of Hearts compote	50
B EI	Orange Tree powder jar	90
A EI	Wreath of Roses bon bon on stem	45
M EI	Wreath of Roses punch bowl base	50
B EI	G/C punch bowl base N	45
R EI	Holly hat shape small chip on bottom	150

Don Mays, Rt 1 Box 333, Earlsyville, Va 22936 PH 804-973-3941

P EI	Singing Birds tumbler 3 ea	30
P EI	Fine Cut & Roses rose bowl Fancy Int (N)	75
B EI	Northwoods basket (N)	65
G EI	Coin DOT rose bowl shaped bowl	35
AQ EI	Blackberry Spray hat shape	40
AQ EI	Pine Cone 5" bowl	40
AQ EI	Waterlily ftd bowl	40
M EI	Sialboats 6 1/2 bowl	15

Barbara Farmer, Rd 5 Box 462, Wheeling, W V 26003 PH 304-336-7689

G EI	Singing Birds water set heat check in spout	300
M EI	Swirl Hobnail rose bowl	170
G EI	N Bushel basket sm chip on rim	40
P EI	N hat pin holder	135
DM EI	Fine Cut & RGses rose bowl chip on one ft N	30
M EI	Wild ROse nut bowl	30

Delores Versprille, 200 Dake Ave, Richester, N Y 14617 PH 716-544-4688

G EI	Fenton Holly bowl	38
P EI	Wishbone ftd bowl	70
EI	Orange Tree berry set 4 sauces usual sm chip on feet large bowl has chip on rim	150
M EI	Grape & Gothic Arch sauces (N) ea	19
A EI	Heavy Iris tumbler	75
M EI	Coin Spot tumbler	60
P EI	Vintage stemmed wine	40
M EI	Imperial Grape stemmed wine	22
A EI	G/C spooner (N)	85
G EI	G/C covered sugar (N)	105

Lee Briix, Rt 1 Box 68, Hennessey, Ok 73742 PH 405-853-2276

M EI	Horseshoe shot glass 2 ea	30
M EI	Waffle Block punch cups 4 ea	9
M EI	Stork & Rushes mug	19
M EI	Singing Birds mug cracked	10
G EI	G/C punch bowl base rim flake	30
A EI	Blackberry Wreath 6" bowl Millersburg	40
B EI	Stork & Rushes tumbler base damage	15
P EI	Cattails hatpin	20
IB EI	Rooster hatpin	22
M EI	Orange Tree sherbert	18

Ray Williams, Woodland Ridge Box 521, Yankton, S D PH 605-665-3140

R	H.O.A.C.G.A. water set 74-75	175
R	H.O.A.C.G.A. wine set	195
R	H.O.A.C.G.A. loving cup	75
R	H.O.A.C.G.A. corn vase	75

Frances Gannon, 8743 Branton, Highland, Ind 46322 PH 219-923-8134

M EI	Peacock at Fountain punch set 6 cups (N)	375
M EI	Orange Tree mug ea	22
DM EI	Imperial Grape goblet 2 ea	28
M EI	Luster Rose butter	45
M EI	Lustre Rose tumbler	20
M EI	Octagon wine decanter no stopper	30
M EI	Golden Harvest wine stopper only	35
A EI	Millersburg Primrose bowl	80
G EI	Millersburg Blackberry Wreath ruffled 6" bowl	45
IB EI	Grape Arbor tumbler	145

Jos. Mello, 535 Fish Rd, Tiverton, R I 02878 PH 401-624-2174

B EI	Holly compote	25
B EI	Orange Tree ice cream stemmed	25
B EI	Bosket (N) sm flake	65
A EI	Star of David bowl (N)	50
PO EI	Coin Spot compote	50
M EI	Octagon tumbler	18
M EI	Acorn Bowl 7"	15
M EI	Orange Tree mug	15
M EI	Stork & Rushes tumblers 2 ea	20
M EI	Grape & Lattice tumblers 8 ea	12

Bernie Mahn, 1001 Rock Rd, DeSoto, Mo 63020 PH 314-586-6226

P EI	Fine Rib berry set (N) 7 pc	200
A EI	Peacock at Fountain berry bowls (N) 6	210
M GI	Diamonds & Rib squatty vase	22
PM EI	Feathers vase (N)	50
A EI	Peacock Tail "Violets Vase"	55
AMB EI	Open Rose Fruit bowl	65
B EI	Stag & Holly three ftd bowl	175
G EI	G/C cologne stopper	50
A EI	Woodpecker wall vase	65
A EI	G/C butter dish	235

Larry Yung, 5758 Nightingale Ct., Cincinnati, Oh 45227 PH 513-271-6399

G EI	Millersburg Cherry tumbler	295
G EI	Inverted Feather tumbler	525
G EI	Peacock at Fountain tumbler ground rim N	195
IG EI	Dandelion tumbler N	245
IG EI	Grape Arbor tumbler base chip N	245
P EI	Inverted Strawberry rim chip	120
IB EI	Wisteria tumbler	425
IB EI	Wisteria tumbler sm base chip	195
W EI	Grape Arbor tumbler	80
M EI	G/C 5 pc water set	195

Mary Kesterson, 3020 Mesa Rd, Willow Park, Tx 76086 PH 817-441-8410

M EI	Mikado compote large	95
G EI	Stag & Holly spat ftd bowl	75
W EI	Grape Delight rose bowl 6 ftd	85
M EI	Stag & Holly giant rose bowl	125
C EI	1909 Shriners champagen 4 ea	70
P EI	Dragon & Lotus spt ftd bowl	45
A EI	Diamond tumbler Millersburg	45
AO EI	Beaded Cable rose bowl	220
P EI	Peacock at Fountain water pitcher	385
P EI	Peacock at Fountain butter top	75

Mary Herren, 520 S Berry, Morganfield, Ky 42437 PH 502-389-3121

SB EI	Zippered Loop lamp middle size	250
M EI	G/C cologne no stopper	50
AQ EI	Thin Rib vase	40
M EI	Lattice & Grape pitcher	95
M EI	Orange Tree shaving mug	18
P EI	G/C Sweetmeat top only finial repair	15

Gary Houdek, 3005 Yorkshire, Charles City, Ia 50616

PO EI	Beaded Cable rose bowl N rare	1500
W	G/C H.O.A.C.G.A. souvenir candle lamp	225
IB	G/C H.O.A.C.G.A. souvenir candle lamp	250
Pink	G/C H.O.A.C.G.A. souvenir candle lamp	225
AO	G/C H.O.A.C.G.A. souvenir candle lamp	400

Henry Hawk, 100 Colonial Lane, Lima, Oh 45805

M EI	Kitten cup and saucer	175
M EI	Panther sauce	50
M EI	Butterfly & Berry master bowl	100
A EI	Good Luck plate	175
LM EI	Nesting Swan bowl	150
M EI	Brooklyn Bridge bowl	300

Arthur Borucki, 3317 W. Maple Rd., Birmingham, Mich 48010 PH 313-647-0825

B EI	Tonahawk very rare chip on front edge	800
G EI	Imperial's Loganberry vase helios	185
M EI	Orange Tree creamer ftd	55
M EI	Orange Tree butter bottom	35

Oma Campbell, Box 107, Ocate, N M 87734 PH 505-666-2237

G EI	Singing Bird tumbler 1	35
P EI	N/G tumbler 1	35
P EI	Acorn Burr punch cup	37.50
P EI	Maple Leaf stemmed ice cream small	23
EI	Jack in Pulpit 5 1/2 vase pedestal base green stand base turning to marigold top	40

Barbara Nelson, RFD 4 Box 155, Laconia, N H 03246 PH 603-293-7246

W EI Daisy & Drape vase	95
M EI Octagon wine decanter w/stopper 4 wines	165
M EI Octagon wine sm inside rim flake	12
M EI Polo ashtray	20
A EI Captive Rose bowl 8 1/2	35
M EI Cherry Circles lg 2 hndld bon bon 8 1/2	40
M EI Butterfly 2 hndld bon bon Fentons	30
M EI Imperial Grape compote	35
AO EI Leaf & Beads rose bowl (N)	185
G EI Open Rose 9" plate	65

Patricia Craver, Box 8015, Allandale, Fl 32023 PH 904-788-5315

P EI Town Pump lg base chip at base of handle	150
AO EI Hearts & Flowers compote lg base chip	85
A EI Butterfly & Berry nut bowl chip on one ft crack in bottom	100
A EI Butterfly & Berry master berry bowl	145
M EI Springtime tumbler	40
M EI Stippled Good Luck bowl	75
B EI Lustre Rose fernery 2 ea	60
LM EI Beaded Shell spooner	50
LM EI Beaded Shell creamer	50
W EI Bushel Basket 8 sided chip one ft	35

Robert Schneider, 10173 Marshall Pond Rd, Burke, Va 22015 PH 703-250-8807

P EI Diamond Lace master berry bowl	45
A EI Buttermilk goblet	39
M EI Etched creamer & sugar pattern unknown set	39
M EI Poppy Variet N bowl	19
B EI Horses Heads 3 ftd bowl 1 edge turned up 1 edge turned down	49
PO EI Stippled Flower tri cornered rayed bowl	29
M EI Beaded Cable ftd N candy dish	25
DM EI Windmill milk pitcher	49

W EI Lined Lattice ftd N vase	35
A EI Smooth Rays bon bon	21
SASE for list	

O. E. Sweeney, 28 Esmond St., Esmond, R I 0297

G EI Pannelled Dandelion tumbler 3 ea	45
P EI Oriental Poppy tumbler 2 ea	45
P EI Acorn Burr punch cup 4 ea	25
B EI Knotted Beads vase	40
M EI Singing Birds mug	45
M EI Vintage powder jar	45
M EI Butterfly & Berry tumbler 4 ea	20
B EI Butterfly & Berry tumbler	35
M EI Acorn Burr punch cup	15
M EI Grape Vine & Lattice 3 ea	25

Edward Henderson, 1111 N College, Stuttgart, Ar 72160 PH 501-673-8757

P EI Fenton Grape wine caraf no stopper	90
P EI Basketweave (N) bowl sm chip	30
M EI Fashion Imperial 8 1/2 bowl	20
M EI Dragon & Lotus 8" bowl	35
M EI Flower & Loops 9" bowl	30
M EI G/C 6" bowl	30
P EI Greek Key & Basketweave (N) 8" bowl	80
C EI Carnival Holly 8" bowl sm chip	40
M EI Carnival Holly 6" bowl	20
M EI Imperial Grape 6" bowl	15

Dale Knight, 4315 N Alvernon Way, Tucson, Az 85718 PH 602-299-9700

IB EI Concave Diamond tumbler	40
AMB EI Thistle 9" ruffled bowl rare Fenton color	135
Lav EI Blackberry open edge basket	75
S EI Fashion sugar & creamer sugar has hairline	75
M EI Whirling Leaves 10" bowl	58

Darlene Yohe, Box 343, Stuttgart, Ar 72160 PH 501-673-3437

M EI	Cannon Ball Vt. enameled water pitcher 4 tumb	250
P EI	G/C sweetmeat nick on serrate & tiney burst bubble on edge of lid	100
B EI	G/C orange bowl scarce color N	250
PM EI	Peacock at Fountain N tumblers 2 ea	25
P EI	Strawberry hand grip plate N	80
G EI	Singing Birds covered butter N	225
P EI	Acorn Burr sugar lid N	35
M EI	Butterfly & Berry sugar lid	15
M EI	Waffle Block punch cup	15
P EI	N basket	70

Len Decarli, 18 Grant St., Rockville, Ct 06066 PH 203-875-2088 after 5

P EI	G/C (N) 7 pc water set	550
P EI	G/C (N) butter cover only	85
P EI	Cherry Wreath large oval bowl	90
P EI	G/C punch cup	25
M EI	Peacock & Grape 9" bowl	30
M EI	Imperial Grape goblet	35
G EI	Acorn Burr (N) punch cups 5 1 brused, 1 chipped 3 pft ea	25
G EI	Millersburg Rays & Ribbons 9" bowl	60
W EI	Leaf Chain 9" bowl	60
W EI	Peach spooner sm chip	40

Dick Wetherbee, 847 Stafford St., Rochdale, Ma 01542 PH 617-892-4420

M EI	Diamond & Rib 15" ruffled top vase	15
P EI	Butterfly hat pin long pin	30
M EI	Three Fruits w/basketweave & Vintage dome ftd bowl	35
P EI	Good Luck (N) bowl Elect irid	95
M EI	Vintage 7" X 6 1/2 compote	35
A EI	Millersburg Blackberry Wreath 7 1/2 bowl radium finish	42
M EI	Vineyard water pitcher	68
W EI	Roundup 9" ruffled plate	115
M EI	Crackle dome ftd tumblers 2 ea	10
P EI	Heavy Grape 10 1/2 master berry bowl	60

Allan Rettke, 14226 E 143rd Lane, Burnsville, Mn 55337

M EI	Waterlily ftd sauce	25
G EI	Peacock at Fountain tumbler base chips	175
M EI	Blackberry Wreath 8 3/4 bowl	28
P EI	Acorn Burrs master berry	150
M EI	Panther ftd sauce flake	30



WANTS

Barbara Farmer, RD 5 Box 462, Wheeling, W V 26003 PH 304-336-7689

- Pine Cone plates
- IB Bushel basket
- V Bushel basket
- IGO Bushel basket
- G Bushel basket
- S Round bushel basket
- BA Bushel basket
- W Persian Garden 5" bowl ice cream shape
- P Lions bowl or plate
- B Lions bowl or plate

Maxine Twedt, Box 904, Lancaster, Ca 93534

- G Little Flowers bowl

Cris Klutts, 13 Del Rancho Ln., Shawnee, Ok 74801 PH 405-275-6428

- Hat pins different shapes, sizes and colors

Maxine Twedt, Box 904, Lancaster, Ca 93534

- Small plates, Pods & Posies, Pinecone

Byron Davidson, 4406 McPherson 10-N, St. Louis, Mo 63108

- B Rambler ROse water pitcher
- Peacock on Fence N any color
- Rose Show bowl or plate any color
- Poppy Show bowl plate or vase any color
- Rose patterns items =
- G Any items
- G Fenton G/C orange bowl with Persian Medallion interior
- B Fenton G/C orange bowl with Persian Medallion interior
- G Wreath of Roses punch set
- Punch & water sets

34

Patricia Craver, Box 8015, Allandale, Fl 32023 PH 904-788-5315

- W Peacock at Fountain punch base
- W Orange Tree punch base
- P Acorn Burr butter top
- M G/C butter bottom

Barbara Nelson, RFD 4, Box 155, Laconia, N H 03246 PH 603-293-7246

- B Peacocks at Fence bowl any pastels
- G Frutis & Flowers bon bon on stem any pastels
- Daisy & Drape vase all colors except w

Jos Mello, 535 Fish Rd, Tiverton, R I 02878 PH 401-624-2174

- M Horses Head plate
- P Imperial Grape punch cups need 4
- A Wreath of Roses punch base only

Mary Kesterson, 3020 Mesa Rd, Willow Park, Tx 76086 PH 817-441-8410

- W Fine Cut & Roses rose bowl or any color
- AO Three Fruits spat ftd bowl
- AO Peacocks bowl N
- AO Peacocks 9" plate
- W G/C banana boat or any other color
- P Tobacco jar w/lid G/C
- W Grape Delight nut bowl
- G Bushel basket N round
- G Seacoast pin tray
- G Sunflower pin tray or any other color

35

Larry Yung, 5758 Nightingale Ct., Cincinnati, Oh 45227 PH 513-271-6399

PO Orange Tree compote
PO Orange Tree punch cup
PO Holly bowl
PO Peacock at Urn any shape
P Inverted Feather cracker jar lid
B Cherry butter base
P Curved Star butter base
P Stork & Rushes butter top
PO Strawberry bowl

Virgil St. John, 1903 Hwy #18 E, Clear Lake, Ia 50428 PH 515-357-7354

M Kitten items all
B Kitten items all

Lee Briix, Rt 1 Box 68, Hennessey, Ok 73742 PH 405-853-2276

P Stopper for G/C whiskey decanter

Marion Korczyk, 205 Cornforth Rd, LaCrescent, Mn 55947 PH 507-895-6013

P G/C punch bowl only table size 3" inset

Len Decarli, 18 Grant St., Rockville, Ct 06066 PH 203-875-2088

M 474 punch bowl base
M 474 punch cup

Darlene Yone, Box 343, Stuttgart, Ar 72160 PH 501-673-3437

P Springtime creamer
P Peacock at Fountain punch cups
M File butter base
M Country Kitchen butter base
W Peacock at Fountain butter lid
P Dahlia butter lid
P Dahlia sugar lid
W Cosmos & Cane sugar base
P Acorn Burr sugar base
M Butterfly & Berry sugar base

Dale Knight, 4315 N Alvernon Way, Tucson, Az 85718 PH 602-299-9700

DM Millersburg Flute punch bowl

Marion Hartung, Box 69, Emporia, Ks 66801 PH 316-342-6200

A Singing Bird tumblers need 3
B Peacock at Fountain butter base

