

H. O. A. L. C. - A.
DONALD E. KIME
BULLETIN SECRETARY
1202 W. 4TH ST.
HAYSVILLE, KANSAS 67060



FIRST CLASS



AUGUST
S M T W T F S
1 2 3 4 5 6 7
8 9 10 11 12 13 14
15 16 17 18 19 20 21
22 23 24 25 26 27 28
29 30 31



Heart of America

Carnival Glass Association, INC.

MEMBERSHIP JUNE TO JUNE
\$10.00 PER COUPLE OR SINGLE

PUBLISHED 15th OF
EACH MONTH

PRESIDENT: GEORGE O. MCGREW JR.
6300 WOODWARD
OVERLAND PARK, KANSAS 66204
913-262-8822

VICE PRESIDENT: GEORGE BOLLES
5204 CATALINA
SHAWNEE MISSION, KANSAS 66205
913-432-5438

TREASURER: ELIZABETH BOLLES
5204 CATALINA
SHAWNEE MISSION, KANSAS 66205
913-432-5438

SECRETARY: DIANE TREFF
13646 LEAVENWORTH ROAD
KANSAS CITY, KANSAS 66109
913-721-2917

BULLETIN SECRETARY: DONALD E. KIME
1202 W 4th ST.
HAYSVILLE, KANSAS 67060
316-524-3123

At promptly 2 P.M. July 25th 1982 the H.O.A.C.G.A., monthly meeting was called to order by the President. We met at the home of Mr. & Mrs. Charles Vaughn, 914 8th St., Baldwin City, Ks.

President McGrew introduced and welcomed our guests Mr. & Mrs. Lee Newman of Lawrence, Ks.

The President gave the treasurers report upon the absence of the treasurer. The report was approved as read and was placed on file for audit.

The minutes of the last monthly meeting were read by the Secretary and approved as read.

President McGrew announced that Janet Zahn has regretfully, requested to be relieved of her position of convention chairperson. The President asked if anyone present at the meeting would be interested in this position. With no volunteers from the floor, President McGrew stated that Robert Grissom had shown some interest in the position at one time and that he would contact Mr. Grissom and ask if he would accept this position.

Nadine Paulsen, graciously invited the club to meet at her home for the October meeting.

We then voted on next years' souvenirs. The choices being as follows: A trio set of Frolicking Bears Mugs to be produced in one each of red, aqua opalescence, and peach opalescent; (the trio set to be produced in a limited amount of a minimum of 350 and maximum of 425); Butterfly and Berry Fernery; Good Luck plate; and a Daisy & Plume rose bowl.

The ballots were tallied and the Trio set of Mugs will be next years' souvenir with the Rose Bowl as a second choice. The decision on the exact amount of Trio Sets to be made will be decided on after a report from Roland Kuhn souvenir chairperson and Fenton Glass Company.

Our next meeting to be August 22, 1982 at the Mission Holiday Inn in Overland Park, Kansas.

Cooley Miller made a motion to adjourn. Elizabeth Bolles seconded the motion. We than enjoyed a delicious variety of refreshments from our hosts.

Diane Treff-Secretary

George McGrew-President



PLEASE MAKE CHECKS PAYABLE TO H.O.A.C.G.A.
AND SEND THEM TO THE SECRETARY.

Diane Treff
13646 Leavenworth Road
Kansas City, Kansas 66109
PH 913-422-7631

PLEASE MAIL:

_____ 1982 Souvenir Corn Vase (s) at
\$40.00 each. Add \$3.00 postage
for each corn vase.

PLEASE PRINT FULL NAME AND ADDRESS

Please return this order form along with
your payment in full to the Secretary, at
the address above.

HOWDY CARNIVAL GLASS COLLECTORS.....

I am your 1982 souvenir chairman and I do not mind telling you that
if you have not yet ordered your ICE BLUE CORN VASE you should sit
right down and fill out the enclosed order form in this bulletin.

There has been a great demand for these souvenirs through the years
and some members are making a heap of profit from the older ones.
I do not want you left out or be sorry, in a short time you will
not be able to get one. Of course, wouldn't it be nice to own the
full 10 year collection? It makes a beautiful display as well as
being an investment for you. It also helps finance your H.O.A.C.G.A.
organization to continue to print literature for your CARNIVAL GLASS
PATTERN BOOK IN COLOR. Also Bulletin expenses and goodies at your
convention. I know you want to help so send our Secretary your order
today.

Cooley Miller
1982 Souvenir Chairman

WELCOME NEW MEMBERS

- M/M Jerry Jackson, Paducah, Ky
- M/M Lyndon Smith, So. Australia, Australia
- M/M Valmer Cross, Prattsville, N Y
- C. Wm. O'Dell, Alexandria, Va
- M/M Galen Glass, Overland Park, Ks
- M/M Neuman Miller, Yorba Linda, Ca
- Wanda Garver Kelso, San Diego, Ca
- M/M Larry Gilbert, Section, Ala
- M/M Wm. Mason, Midland, Mi
- M/M N. E. Childers, Wellington, Tx
- Thelma Gribble, Bremerton, Wa
- Leila Galvin, United Nations N Y
- M/M Edwin Schreiner, Hilbert, Wi
- M/M Terry Woodhams, Sodus, N Y
- M/M Ole Olson, Shreveport, La
- M/M Vernon Gentzler, York, Pa

LITTLE MUGS

We still have less than a dozen each of the little table favor mugs that were used at the convention banquet the past two years. NOW is the time to get your order in if you want one of these little cuties.

Last year was the vaseline color and this year was the cobalt blue both very good colors. They were made in a very limited supply so now or never if you want one. The cost for these little mugs are as follows: vaseline 1981 \$10.00 plus \$2.50 postage and the 1982 cobalt blue \$7.50 plus \$2.50 postage. Please send your order with full remittance to the Secretary, Diane Treff, 13646 Leavenworth Road, Kansas City, Kansas 66109.

DUES

Your dues are past due if you have not paid them and your bulletin will stop until the dues have been paid. Please take the time now to pay them.

1981-1982 SOUVENIRS

We still have a few of the 1981 red Grape & Candle lamps left and also some of the 1982 ICE BLUE CORN VASES. This is one of the main sources of incoming revenue to support the club so please order yours now. Both items were a limited edition and are both fine pieces of glass to add to any collection. Your dues do not pay for the bulletin expense and please remember your support is returned to you when you attend the convention by the different activities planned for you. The cost of the 1982 ICE BLUE CORN VASE is \$40.00 plus \$3.00 postage and the 1981 red Grape & Cable lamp is \$75.00 plus \$3.00 postage. Please send your order with full remittance to the Secretary, Diane Treff, 13646 Leavenworth Road, Kansas City, Kansas 66109 as soon as possible.

AUCTION PRICE REPORT

Al and Wendy Rettke have put together a 1982 Carnival Glass Auction Report which is a list comprised of 2400 sale prices of Carnival that sold between June 1979 and April 1982. Patterns by Hartung name and the information includes date sold, price and auctioneers name for easy reference-Single copy price for 8 1/2 X 7" list \$8.00 PP-order from Al &

Wendy Rettke, 14226 East 143rd Lane, Burnsville, Minnesota 55337.

This is a very good reference booklet to have on hand for future reference material as well as the present.

REPRINTING OF ANY EDUCATIONAL MATERIAL

Please let me remind you that any educational material appearing in this bulletin must have written permission from the writer of such material, if it is to be reused in any other publication or any other way.

PLEASE ADD TELEPHONE NUMBER

In your new 1981-82 roster please add a telephone number to Burney Talley name and address. PH 505-242-1261. He would like fellow collectors to call up and come by if they are in the Albuquerque area. This under the state of New Mexico.

AUCTION

The Woody Auction will be selling the Sam Roebuck collection-110 pieces of very rare carnival glass, 130 pieces of choice scenic, portrait & Floral R. S. Prussia. This auction will be September 3 & 4, 1982 at the Holiday Inn West, St. Louis, Missouri.

August 19-20-21
PACIFIC NORTHWEST CARNIVAL GLASS CLUB, Vance Tye Motor Inn, Olympia, Washington

October 16-17
AIR CAPITAL CARNIVAL GLASS CLUB, Mini-Convention, Sheraton Inn-Wichita Airport, I-235 & US 54 5500 West Kellogg Drive, Wichita, Kansas

EDUCATIONAL TUMBLER SERIES

BY JOHN & LUCILE BRITT



ACORN BURRS IN GREEN, MARIGOLD & PURPLE

"Acorn Burrs" is a very fine Northwood creation and nearly all of the pieces made in this pattern were signed with the underlined "N" in a circle. The tumblers are probably the most ornate of all the carnival glass tumblers. The realistic clusters of oak leaves and acorns are placed over a tree bark background which is outstanding in workmanship and detail. The tumblers are of standard size, usually ranging from 4 to 4 1/8 inches high. The base contains a lipped collar, but does not contain the groove that is found on so many of the Imperial tumblers such as Fashion, Octagon Variet etc. The bottom is completely smooth and contains the famous trademark on the inside of the base.

Besides the water set, "Acorn Burrs" can be found in table sets, berry sets and punch sets. A whimsy vase has also been reported that was probably stretched out from one of the tumblers. In this particular pattern, in my opinion, the punch sets are at the top of the list. This is due to the fact that they can be found, but rarely, in the pastel blue, pastel green and frosty white colors, and in an extremely rare case-----even in aqua opalescent.

The very pretty "Acorn Burrs" tumblers can be found in green, purple and marigold. The marigold tumblers in this pattern are usually of a very rich color and are excellent examples of just how beautiful marigold can be. Tumblers in this pattern are not considered rare, but they certainly do not take a back seat in quality or desirability.

I would like to mention an interesting fact regarding the "Acorn Burrs" tumblers. A single white "Acorn Burrs" tumbler has actually been reported. In reading an old S.C.G.C. newsletter (Society of Carnival Glass Collectors) that was published back in 1966, we find a list of 35 prized tumblers prepared by Leslie C. Wolfe, which included an "Acorn Burrs" tumbler in white. Rev Wolfe was a top tumbler collector at that time and also owned the first of the two known Frolicking Bears tumblers. I have visited with Rev. Wolfe since then and he states that he definitely did own a white "Acorn Burrs" tumbler. I have searched in vain for a number of years to locate this tumbler or another one like it, but as yet have found no clue as to where it might be. (Note: We were not collecting carnival glass in 1966, but were given old newsletters by Betty Klutts from this first carnival glass Association. O. J. Olson was instrumental in forming that original carnival glass association. We wish to thank Betty Klutts again for these old newsletters as we have learned so much from them. One sad fact is that many of the names mentioned in those old letters have now disappeared from the carnival glass scene.)

This is No. 55 in this series on carnival glass tumblers. Next month we will feature another pattern that we hope will be of interest to all carnival glass collectors.



PICTORIAL PATTERN PARADE

by JOHN & LUCILE BRITT



DUGAN'S HEAVY GRAPE BOWL

For a good many years now this uncommon and beautiful pattern was considered to have been made by the Millersburg Glass Company of Millersburg, Ohio. Continued glass research by a number of collectors and glass collectors and glass researchers have proved this to be incorrect, however. This heavy grape pattern is now considered to be a product of the old Dugan Glass Company of Indiana, Pennsylvania. Since Dugan did produce a large quantity of our carnival glass and his name has been very much over-looked through all these years, we think we should honor this man by using his name when referring to this pattern. After all we do have an Imperial Heavy Grape pattern and this will help beginning collectors in distinguishing these patterns apart and also recognize a name in carnival glass that certainly deserves recognition.

The piece shown above is about the size of the farmyard bowl. It rather reminds one of that famous bowl in the way in which it was made. This featured massive grape pattern is very seldom seen in collections or for sale. It is also known in a low ice cream bowl shape which is

an outstanding piece of carnival glass. A small berry bowl has also been reported. We have also seen these large size bowls in peach opalescent which are even more hard to find. The reverse pattern used on this piece is the Compass pattern. This Compass pattern is also used on the outside of the Ski Star bowls. We consider the "Dugan's Heavy Grape" as a really fine pattern and indeed quite hard to find. The above bowl is owned by Everett Henry of South Bend, Indiana.

NOTE:

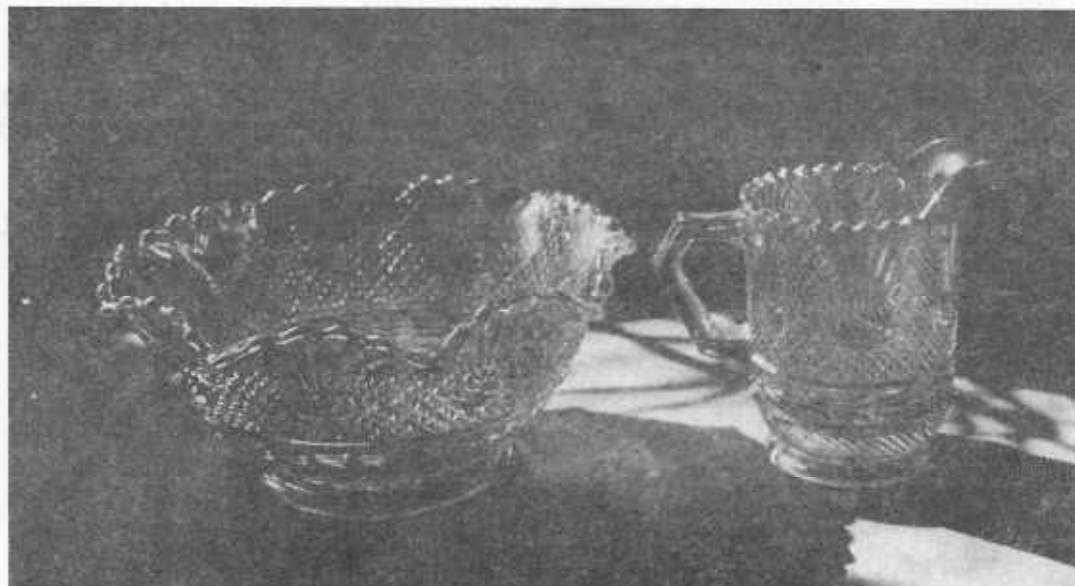
As you can see John & Lucile Britt have contributed their 55th article on tumblers and probably as many Pictorial Parade articles have appeared in the bulletin. We are so grateful to have this information shared with us. Through their articles we have learned so many things about the different tumblers. The variations of the patterns, different colors and shapes as well. I am quite sure our collections today would not have included some of the pieces it does if it had not been for some of this information we have been given through these articles. I say thank you again from all of us.

Editor



SEA THISTLE
Sowerby Pattern No. 2371
Named by Ray Notley (not in Hartung)

This pattern, a near relative of Pineapple was introduced by Sowerby in 1923. It is only recently that sugars and creamers have come to light in marigold carnival. Very few examples are known in iridised glass as it would seem that less than 200 pieces of each shape were treated by the SUNGLOW process.



We have here an example of a non-production item that needs an explanation. Items in this pattern are scattered throughout the existing catalogues but there is no extant illustration of a sugar or creamer. The 1923 illustrated catalogue is still missing. They are noted in an unillustrated list of 1926 which shows items available in crystal. Sowerby and other pressed glass houses of the period were experiencing extreme difficulty at this time. They were a coal fired factory and the 1926 miners strike which led into the GENERAL STRIKE of the same year meant difficult working. My father worked at this time, for the company that supplied fuel to Sowerby, and I know a lot about this period as it is family history.

Trouble had been brewing for some while and the glass trade press had noted that all the pressed glass firms were "making in" early in 1926 i.e. they were making and stockpiling goods for which there were no orders. Quite rightly the Trade Gazette pointed out that this was an unwise business practice. Sowerby had no idea what would be in demand after the "trouble" so simply made a hundred items from each mould they had in use at that time. Stockrooms and sheds at the back of the of the factory (adjoining the railway yards) were full of glass that they hoped would sell during and after any strike. In the event, supplies of coal, of poor quality, continued to reach the factory throughout 1926 and, even though they were only working two days a week at one stage, the factory continued to chum out glass for which there was little demand.

By 1927 the strikes were over and Sowerby had introduced their Carnival ware in an attempt to boost trade with novelty. However in an effort to shift stock they also iridised pieces from the stock pile. Sugar and creamer sets were a steady seller so the remaining pieces of Sea Thistle in these shapes were iridised and marketed. Less than 100 of each assuming that a few in plain crystal had been sold.

These are non-production items in Carnival i.e. odd pieces of existing glass stock being iridised rather than special carnival production line items. Odd pieces of Sowerby carnival keep turning up as a result of this practice and "making in". Some rare and unusual pieces of American carnival may be explained by this process which I cannot believe was not indulged in by the American factories at one time or another.

This pattern is rare both in crystal and carnival. It makes a delightful collectors item with an interesting historical background. I suspect from catalogue entries that baffle me at the moment that other items in this pattern will probably turn up in Marigold. They too will be rarities. (Non-production items in Pineapple pattern are being collated at the moment by another English researcher whose hoard of English glass, catalogues of Davidson, Greener etc. and wholesalers lists are a real and wonderful help to yours truly. This source wishes to remain in the background for the moment due to insurance problems. Thanks are due anyway.)

(Author's copyright reserved 1982)

Ray Notley
England

"My most recent modest article on the Hen seems to have caused some confusion. What I wrote is quite correct. Neither Sowerby's nor myself, had anything to do with the way that the residual stock of blue Carnival Hens, made in 1928, was marketed in the United States nearly 20 years ago. Other non-carnival Sowerby glass, some dating back to the 1880's, was available at the same time. NONE of it went through the sales office of the Sowerby factory. The production details of the Marigold Hen are also to be found in my original article. I am writing the story of Sowerby Carnival glass production. I cannot be responsible for the disposal of old glass stocks that left Sowerby's cellars via the back door. This is a way of telling everyone that the blue Hens that reached New York in the 1960's were probably stolen goods. I assumed that this was generally known.

Ray Notley
England

NOTE:

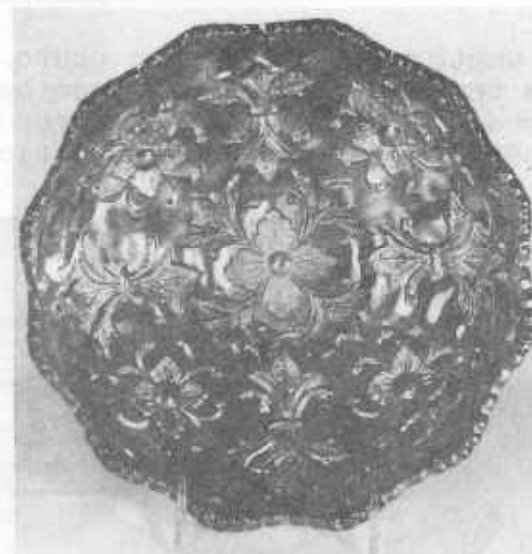
Ray Notley has just begun to have his articles printed in the H.O.A.C.G.A. bulletin and already the factory of Sowerby Glass is making an impression in everyone's mind. This collector for one when the word Sowerby was mentioned, gave no mark of being connected with carnival. Now we are finding out it certainly had its place in carnival glass and some of the patterns that have shown up and particular pieces coming to light came from England and were made by the Sowerby Glass Company. Ray has the research material to confirm his statements and this always makes the articles much more interesting when we know their are company records of an old factory or if one has a particular piece of glass and knows exactly where it came from and the history of its making. We will be seeing much more of Ray's articles in the forthcoming bulletins and probably in the September issue we will be bringing to you some reprints of old pages out of the Sowerby catalogs that once were thought to have been destroyed. Ray will be our guest speaker at the 1983 convention and will have some very interesting information for us come next April.

Editor

MILLERSBURG FLEUR DE LYS

(By Don Moore)

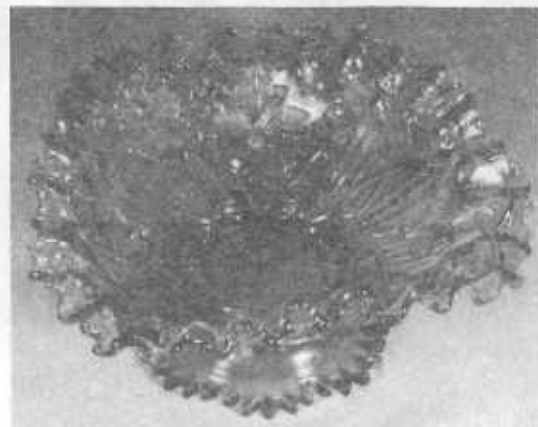
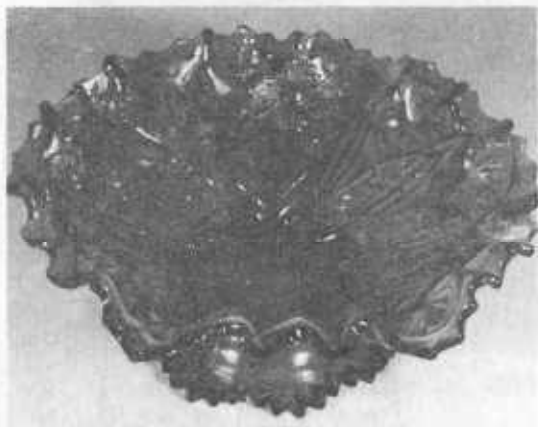
Recently Connie and I jotted down what we considered the ten prettiest patterns in Carnival. Rarity and value were completely ignored. I found it interesting that the Millersburg Fleur de Lys was on each of our lists. While not made in a wide range of colors or shapes, these pieces are all beautiful and graceful in design. I am not sure I have ever seen a bad Fleur de Lys. This pattern was obviously inspired by the French national emblem which has always been a popular design in American art.



The two 10" bowls shown in photos 1 and 2 are on a collar base and are from the same mold. The ruffled bowl in photo 1 is seen much more often than the round (ice cream shape) bowl in photo 2-maybe as high as 8 or 10 to one. Each shape can be found in the three standard Millersburg colors-marigold, amethyst and green. It has been my experience that the ruffled bowls will more often have a satin finish while the other shapes are more often radium. The scarcity of the ice cream shape plus the radium finish means that this piece will sell for about double the price of the other bowl. One in marigold brought \$190 at a Burn's (Mells) auction in October of 1981.



The amethyst rose bowl in photo 3 is a whimsey that was shaped from the standard collar base bowls like the ones already discussed. Only the one has turned up to date. It brought \$600 at the Wilson Millersburg auction in February of 1982.



The bowls shown in photos 4 and 5 represent a second Millersburg version of this same pattern. Instead of the collar base, it employs a dome foot which gives it quite a different appearance. The one shown in photo 4 in green, is the ruffled shape that is usually seen but it can also be found in the round (ice cream bowl) shape. While the round one is seen less often, the price of the two shapes is much the same. Unlike the collar base bowls these dome footed specimens are more often found with the radium than the satin finish. They, too, were made in the three standard colors. One in amethyst sold for \$250

at a Woody (Mullins) auction in February of 1981. Now and then these dome footed pieces turn up in a tri-cornered shape like the marigold one shown in photo 5. These are much more rare and will bring about twice as much as the round or ruffled version of the same piece. One in marigold sold at private sale for \$350 earlier this year.

Like the one known rose bowl shape on a collar base, there is also one known rose bowl on a dome base. It, too, is amethyst and is very rare.

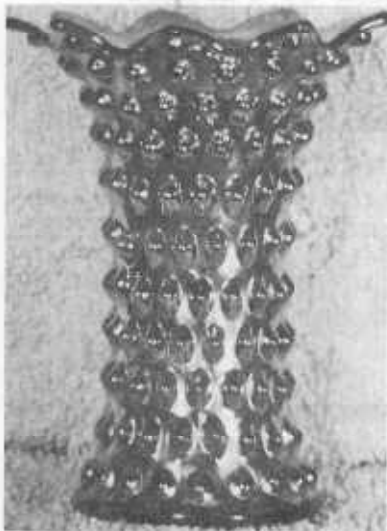
The most outstanding piece in this pattern, in my opinion, is a dome bowl in vaseline that has been turned up on four sides into a square shape. It is owned by Jack and Mary Adams and is indeed a fabulous piece of glass.

No doubt this is already more than you ever wanted to know about this pattern but let me point out that the reverse pattern on each of these bowls is Country Kitchen. I must also mention that this Fleur de Lys pattern is used occasionally as the interior pattern of the Hobstar and Feather punch bowl. The vase, however, that is also known as Fleur de Lys is quite a different pattern. It is not a Millersburg product.

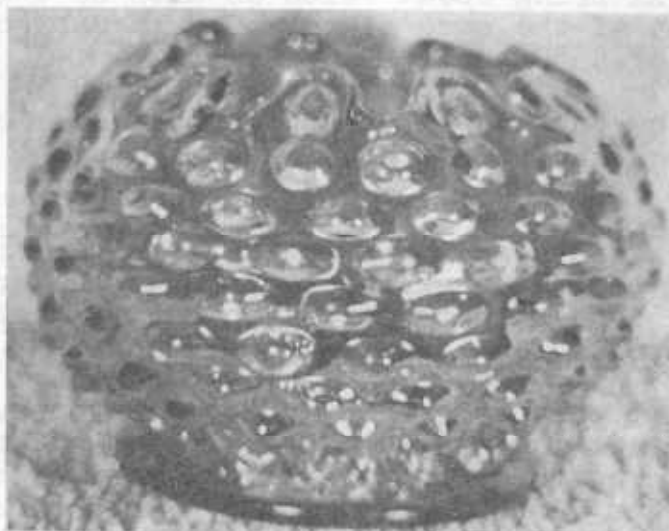
NOTE:

I think it so fortunate that we have the dedicated people like Don Moore, John Britt, Bill Edwards, Ray Notley just to name a few that are willing to share with us the valuable information about the different patterns, colors and all the rest of the information they give to us. Never do we get tired of reading your articles each month. I often wonder many times what if Mrs. Hartung had never written the many books she so graciously has, just where would have our hobby be today. Mrs. Presznick contributed much to our hobby also. There are so many many people who have made our great hobby what it is today. As I read the last paragraph in Don's article where he states, (No doubt this is already more than you ever wanted to know about this pattern), I hope all of you will keep on telling us more and more as things come to light each day. My mail tells me each month how grateful everyone is of the many educational contributions so many of you make. I thank all of you for your efforts and keep the good work up.

Editor



SWUNG VASE



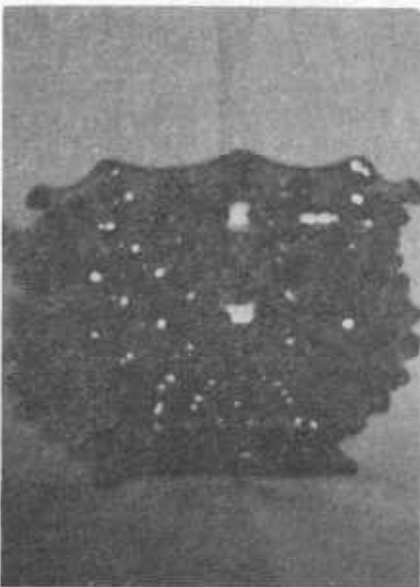
ROSEBOWL

HOBNAIL VARIENT

Shown are three examples of this very rare and little-known Millersburg pattern; a swung vase, a rosebowl and the jardinere shape. All are extremely rare.

An original mold drawing owned by Mr. Frank Fenton shows the original mold pattern for these items as a 5 1/2" urn shape with a 21 oz. capacity. The notes on the drawing indicate swinging to a height of 18" was possible and also states "18 rows of dots around, 11 rows in length". This is exactly what we find when we examine the known examples.

The vase shown is amethyst and has a lease diameter of 4 1/8". It stands 8" tall and has a lip diameter of 6 1/2". As you can see, the finish is high radium.



JARDINERE

The rose bowl is marigold and has the same base diameter. It is 4 3/8" tall and measures 6" across the middle.

The jardinere is much like the rose bowl in shape and has a height of 4 3/4". It also measures 6" across the middle and is a beautiful amethyst.

As we said, there are eleven rows of hobs. Ten rows have 18 hobs and the top row has nine hobs. These nine hobs correspond to the nine scallops indicated on the mold drawing.

The one remaining mystery about the Hobnail Varient is whether it is a product of the earlier Millersburg production while Mr. Fenton controlled the firm or possibly a spin-off by the short lived Radium Company that took over the plant when John Fenton declared the business bankrupt. Some of the mold drawings indicate either Millersburg Glass Company or Radium Glass Company designations on the edge of the drawings, however some do not and Hobnail Varient falls in with the latter.

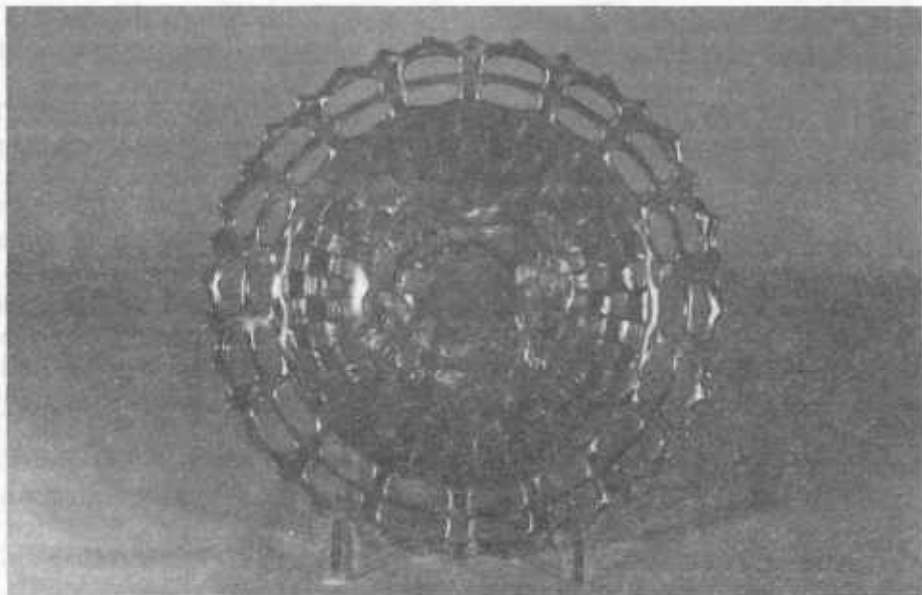
I am very grateful to Mr. Frank Fenton for sharing the Millersburg and Radium mold drawings with me and also Don Doyle of Rockford, Ill, for allowing me to show these three rare examples from his outstanding Millersburg collection. They constitute the only complete set found in one collection to the best of my knowledge.

And in addition to the three shapes discussed, a bowl shape in amethyst has been reported. This would undoubtedly be the jardinere opened out and would be equally rare.

Prices for the above items would be in the \$750-\$850 range currently; but due to their extreme rarity, these items could balloon in value very quickly. So if you spot one, I would advise you to grab it before someone else does.

Carnival Cameos

BY DONALD MOORE



OPEN EDGE BLACKBERRY (FENTON) - This piece is usually seen in various hat shapes and is largely unknown in the flat plate, as shown here. Recently I also showed this pattern in a rare vase whimsy that stands some 7½" high. This pattern is also known in an extremely rare spittoon whimsy. The plate measures 8", and the few I have seen were all marigold. The vase is known in blue and marigold, but the only known spittoon is blue. The hat shape, in which this pattern is commonly seen, comes in a wide range of colors, including red and numerous pastels. The marigold plate, as shown, will sell in the \$150-200 range, which I feel is reasonable in view of the very limited number of these pieces that are known to exist.

FINE CUT & ROSES, in Carnival Glass

The Fine Cut & Roses pattern was unfortunately, used on only two shapes in Carnival Glass by Harry Northwood. Such a pleasing pattern could well have been adapted to other pretty shapes. The two shapes, the rose bowl on three feet and the candy dish, also footed, are the only Carnival Glass ones. We will confine ourselves here to the rose bowl. Generally the candy dish follows along in most respects.

The Fine Cut & Roses rose bowl is a really attractive piece of Carnival Glass, and is somewhat unique in its shape. Most rose bowls in Carnival have a rather pronounced center bulge, but the Fine Cut & Roses is rather slender vertically and has a rather unusual closely ruffled or crimped mouth or top of the piece and is mounted on three attractive feet, and that's where the trouble starts. Damage to the feet is quite prevalent and for top value cannot be present. Also it is not unknown that the lovely roses on the body of the piece may have a bit of damage over the years, as they protrude delicately and do get damaged.

No other rose bowl is, in my opinion, as well designed, well executed, and as attractive to the eye as this lovely pattern is, combining beauty and delicacy and artistry with an attractive fine cut pattern, as well. Of course you have your favorites too, as I have mine.

We may see this lovely pattern on pieces which have a crisp, sharp execution from the mold. Then again use of the mold was such that well rounded (rather than crisp and sharp) roses, vines, and leaves are readily apparent. There is nothing wrong with this. Such is the price of popularity of any attractive piece. To satisfy demand the mold was used beyond its designed life, and because less than optimum fineness results from overuse then fineness of production is slightly sacrificed. In most glass or other "metal" which was made from a mold, it is a natural result.

But, lets remember, the more crisp and sharp the details of any pattern may be, the inevitable result is that more damage can happen easier than if the details were other than sharp, as a rounded surface more easily reflects a light blow while a sharp relief can shatter-or the dreaded word-chip.

So having wandered into "general" lets return to specifics. The vivid colors of Fine Cut & Roses rose bowls have the N in a circle, Northwood signature, while the pastel colors in this shape have an interior pattern called Northwoods Fancy, which precludes the N signature. There

is already decorative work on the underside so the signature and the interior pattern must be on the interior bottom and with an interior pattern there is no space left for a signature. The pastel colors in this pattern, without exception have the interior pattern.

The purple Fine Cut & Roses bowl was made with no interior pattern and with the N signature, and it was made also with the interior pattern, Northwoods Fancy. There are many more of the purple ones without the interior pattern than there are those with an interior pattern.

Purple, Marigold, Green, Blue, Amethyst and Lavender do have the N signature but except for purple do not have an interior pattern.

Purple (as noted before), White, Amber, Ice Blue and Aqua Opalescent are colors which have the interior pattern. I have heard of Ice Green, Peach, and Smokey but nowhere can I find any confirmation that this pattern was made in those colors in the rose bowl shape. If anyone can confirm these colors in this pattern and shape, I would appreciate it if you would let me know about it, or them, and also the interior type. Personally I am of the opinion that they do not exist. Please prove me wrong as I would be pleased to learn that they were so made.

The purple one is the only color made in both types, and the purple one with the interior pattern, Northwoods Fancy, is by far more scarce than the other. For some unexplained reason there is not a whole lot of difference in price between the two, maybe \$20 or \$25. This is undervalued if relative availability is any criterion, which it should be.

The Aqua Opalescent version of the Fine Cut & Roses rose bowl is by far the most expensive, while not really the most scarce one. Amber, White, Lavender and even possibly the dark green are more scarce than the Aqua Opalescent. However the Aqua Opalescent will sell in the range of \$700 to \$900 when available, which is seldom, to be sure, while the Pastel ones generally are in the range of \$200 to \$300. The vivid colors usually sell in the range of \$65 up to just under \$100. Of course like all Carnival Glass, condition is the price-controlling factor. Quality of iridescence, chips, flakes or any other damage is severely detrimental to the price.

There are few Carnival patterns which were made in only two shapes (there are of course some in only one shape). Of those which are in only two shapes it would be hard to find them in as all around attractiveness as the Fine Cut & Roses rose bowl and candy dish.

Bear in mind that a rare piece in poor condition is not much more, if at all, attractive to a buyer, than an ordinary piece in excellent condition.

COLOR	N INSIDE	PATTERN INSIDE	REMARKS
M	X		
G	X		
B	X		
P	X	X	
A	X		
LAV	X	X	
W		X	
IB		X	
AMB		X	
AO		X	

I.C.G.A. CONVENTION

We have just returned from Elkhart, Ind where the ICGA held their Carnival Convention, July 7-8-9-10. It was one of the nicest Motor Lodges we have ever been to for convention. They really tried to please and even gave Jerry Hunter an appreciation award for choosing their motel. Most usually the management acts like they do not care and almost wish we were somewhere else.

We left home early knowing it was a 450 mile trip so wanted to get there in time to set up our display. We gained an hour for Indiana is not on daylight time as we are. We had three detours on the way so decided on the I-90 route back even if it was farther and a toll road too. It took some while to get the patriotic display up then we could visit and see all the other lovely displays.

It is so surprising how many ideas our carnival members can think up. One we will not forget was the pretty banana bowls full of bananas with a monkey in the center and a plaque saying "Were going bananas over carnival". I expect that describes us all and was a happy group all the time. The Delbert Hunters had a lovely "Down on the farm" display and we knew at once it had to get 1st award-which it did. The Taylors had a 2nd prize winner with a lovely Peacock display. Our Patriotic got 3rd-but hardly know how as some other beauties were shown. We really loved the Bob Vinings with the cute doll at a table-cereal, milk etc, in kitten dishes and saying "Breakfast of Champions". Another spectacular display was the Jack Adams featuring the most beautiful Millersburg carnival displayed on a black back ground-all highlighted by a spot light and appropriately the theme "Radiant Radium". It was absolutely breath taking. The Carl Bookers got 4th with a pretty display of minatures with music from Disney Land. Oh so many-wish I could describe each one in detail. Oh yes Don Moores display of 3 Morning Glory Pitchers. The awards were cut glass decanter sets in graduated sizes.

We had a lovely lady from Australia with us. Lelia Galvin has wanted to come for a convention for 3 years so finally made it. She got award for longest distance-also a cut glass item so huge we wonder how she would ever get it home. Rovene Heaton received one too for getting most members through the year. All awards appropriately engraved with dates etc.

The auction on Thursday night was good and the room seemed full. We think at least 140 bidding numbers. Highest item was the red "Roses & Ruffles" lamp. An ice blue Peacock at Fountain punch set was a beauty and if I could have wished for one thing-that would have been it. A man from Pa. got it and the Grape & Cable ice blue fernery. Both lovely items.

The banquet Friday night was nice. The whimsys auctioned off after the dinner brought nearly \$5,000.00. Some were most unusual-made from the red Frolicking Bear cuspidor souvenir. I believe they have sold about 500 souvenirs so far as they are quite pretty. Only one was left from last year of the aqua opal and it was auctioned off so you can see they do not last to long.

Saturday morning was "Good bye" breakfast but many were going to the Dayton, Ohio ACGA convention July 28-29-30-31st so that made the good byes easier to take. The awards were given out at this time-also new officers installed. We left at 10 A.M. and did make better time the northern route-decided to stay at New Philadelphia, Ohio Saturday night so we could go to couple flea markets and some shops-getting home Sunday evening all tired out with lots of work waiting. With the ACGA convention so close the big question is: what to use for a display? One at a time is all we think of so not much time to use thinking in so few days. Maybe we will not do any-who knows?

Grace & Byron Rinehart
Charleston, West Virginia

The Rineharts were kind enough to send us a few of the prices of the glass and they want to share them with you.

IB G/C cologne 275
M Kitten dish 100
BO Jack in Pulpit vase 215
A Persian Garden chop plate 2100
G Dandelion mug 575
P Farmyard bow ruffled sm flk 1250
IGO Three Fruits ftd 575
M Boquet water pitcher 190
IB Peacock at Fountain punch set 2250

G Oriental Poppy tumbler 90	G/C whiskey decanter 175
W Oriental Poppy tumbler 130	R Orange Tree shaving mug 400
IG Oriental Poppy tumbler 310	B Banded & Stippled G/C orange bowl 280
BO Carolina Dogwood bowl 425	A Orange Tree Loving cup 240
IB G/C fernery 1600	G Swirl Hobnail vase 525
AO Rose Show bowl 370	
IGO Blackberry Spray hat 230	
M Milady tumbler 105	
R Roses & Ruffles lamp 2700	

ANOTHER POINT OF VIEW

I read the note in the July 1982 issue of the bulletin and was somewhat taken aback. At first I thought that the statement about "carnival of any worth" and about dealers, antique shows, and flea markets must have been tongue-in-cheek or had been taken out of context. If it was not, I can assure you that the statement is erroneous. We have found several "pieces of worth", such as the Millersburg marigold leaf and little flowers compote, a vaseline opal waterlilly bowl, an ice blue poppy pickle dish, and a marigold grape arbor pitcher all in excellent color and condition and at quite reasonable prices. All it take is a little perserverance.

I find most irritating the inference that some carnival has "worth" and some does not. If one feels that only rare or costly in demand pieces have any worth, they are certainly missing much of the joy of Carnival Glass. You must remember that originally Carnival was a cheap glass made for the masses and has almost no intrinsic worth. The tangible value (its selling price) of any piece of carnival is related only to its supply and demand. As an example: if there are only 10 items available and 100 people each want one the tangible value rises quite rapidly: however, if there are still 10 items available and only 5 people each want one then the tangible value falls just as rapidly. The true joy of carnival glass lies in its intangible value (not measured by dollars and cents) such as its beauty, its shape, the adventure in its acquisition, etc.. Many of the "common" patterns and shapes are quite beautiful and should be admired for just that and not the rarity and price. Please, as an organization dedicated to the fostering of appreciation of Carnival Glass let us not give the impression that we consider some carnival of "worth" and some not.

Jerry Stoner
Oklahoma City, Ok

THE CARNIVAL CLUB OF GREAT BRITAIN

At last! The Carnival Club of Great Britain is launched.

Early in June the first newsletter of 44 pages went out to nearly 100 Carnival Glass collectors, all of whom had said they would be keen to join if I could establish such a club.

Many of these are Carnival Glass enthusiasts like myself, with whom I have corresponded regularly over the years since I began collecting, while many more have written since my book was published early in 1981. Our aim is the same-to meet other collectors so as to exchange knowledge and ideas as well as discuss one's recent "finds" and listen to others talk about their collections.

But until we are able to organize such 'get-togethers' in the flesh, we have to content ourselves with being a club of collectors whose newsletter is their regular meeting place. This for the moment is the only way we can get together and learn more about Carnival Glass from each other.

The newsletter-with it's distinctive marigold cover-has been sent as far away as the Isles of Orkney and even further to Australia, Canada and the U.S.A.-with the same invitation to all-join by sending a subscription which will ensure there is enough in the kitty to mail to every member on the register (and at the time of writing there are 50), a 44 page illustrated newsletter three times a year-Summer, Winter and Spring.

Of course I am relying on the members to fill it's pages with their news and views, their letters and sketches telling other enthusiasts about the carnival they have found or wish to know more about. And if they have something to sell or exchange, there are always the Swop Shop pages, to help swell their collections.

The aims of the Carnival Glass Club of Great Britain are very similar to those of the clubs in the U.S.A. - to encourage and promote an interest in old carnival Glass, be it English-made, American or Australian, to cultivate friendly relations among Carnival collectors and dealers and to assist members to get the most enjoyment and value out of the collecting of old, iridised, pressed glass.

Perhaps as the months progress we can arrange a first meeting-a-mini-convention-hear members' opinions and plan the Club's

future. It would be nice for the Club to organize group visits to glass collections and glass making factories, as well as talks and slide lectures introducing and identifying pieces of Carnival. Possibly talks on other collectables also. Perhaps the Club could even organize a Carnival Glass exhibition and fair to stimulate wider public interest. Dare one look far enough into the future to see a group from the Carnival Club of Great Britain attending one of the big conventions in the U.S.? Why not? This after all is only the beginning.

Angela Hallam
England

ON THE ENGLISH CARNIVAL SCENE

These past few months I have had many delightful carnival surprises. Pieces I thought I would never find, have quite unexpectedly come to light in the most unlikely places.

I go to a good many fairs and markets and searching shops very far afield, and it has been worth it.

Let me tell you some of the highlights of my recent finds. Definitely the FIND-OF-THE-YEAR for me was getting a 12 inch "Daisy Block Row Boat" in amethyst, though a short while before that I found, first a marigold "Acanthus" bowl and a week or two later, a pair of marigold plates in the "Acanthus" pattern.

At a local bric-a-brac market where I looked in at the end of a long day's unsuccessful searching, I came upon a really classic find in the shape of the "Egyptian Queen" celery vase. It is a marigold, with a very well defined string of human figures dancing round it within the green band at the top.

One of my favorite Carnival hunting grounds is Brighton, the Sussex coast town that many people refer to as London by the Sea because it attracts so many fun-seeking Cockneys, particularly on race days. It attracts me because I have found so many choice pieces of Carnival there - among them a "Hand Vase" in rich marigold, a marigold "Lattice and Grape" tumbler, and a marigold "Octagon" wine glass. A piece I came upon even more recently was a perfect specimen of a "Birds and Cherries" compote in a bright base green with a lovely golden iridescence.

I have added yet another "white" find to my collection—a pair of unpatterned white candlesticks. And talking of pairs, I was especially bucked to discover a pair of marigold vases in the Diamond and Sunflower pattern, which look almost like sparkling cut glass they are so beautifully pressed. I now have just over 500 pieces in my collection.

Happy hunting folks and hope you come up with some lovely treasures. Kindest regards, from a U.K. Carnival collecting friend.

Angela Hallam
Surrey, England

I am enclosing a list of items for sale and wanted for the August issue of the H.O.A.C.G.A. bulletin.

I think this is a great service to members and this is my first time to take advantage of it. I hope I have made everything clear.

I truly enjoy the Bulletin and look forward to receiving it each month. I have the 1982 Souvenir Corn Vase and think it is beautiful. We hope to be able to attend an annual meeting some time.

Hubert Shelton
Munfordville, Ky.

We recently attended our very first carnival convention—the International at Elkhart, Ind. After the convention we drove on over to South Bend for the plate Collectors National Convention, since we are avid collectors of Carnival plates, Roseville, Weller and other American Art Pottery. Briefly: WOW. Were we impressed. However by far the best convention was the International one at Elkhart. The displays were knockouts—everyone was friendly---it was like one large family. We visited and met alot of "famous people in the Carnival people as we went room to room. Everyone was helpful, willing-eager to share information ---and above all willing to help us locate particular patterns and colors we are looking for. They even took our names and phone numbers. Two have called already with information. Since we both are teachers—we are somewhat locked into a schedule. We do plan, however to attend the "Mini Convention of the Air Capital Carnival Glass Club in October.

Byron Davidson, St. Louis, Mo

OLD CARNIVAL GLASS LIBRARY

CARNIVAL GLASS RARITEIS-A color line approach. Lists the top 10 rarities in each color-plus complete rarities price guide-40 pages of black and white pictures-special section on whimseys-\$8.50 pp. Also THE SHAPE OF THINGS IN CARNIVAL GLASS, 110 pages, 200 items in full color-\$9.95-Donald Moore, 2101 Shoreline Drive, Apt 462, Alameda, Ca 94501

CARNIVAL GLASS SERIES, each book has 100 different patterns illustrated and described-10 books in the series, books 1,2 and 3-\$3.00 ea, books 4 thru 10-\$3.50 ea. New edition 1981-82 price guide-\$5.00 pp, Northwood Pattern Glass-clear, colored, custard and carnival-\$9.95 plus 50¢ postage. Marion T. Hartung, Box 69, Emporia, Kansas 66801

CARNIVAL IN LIGHTS-A full color book on Carnival Lighting, including Gone With The Wind Lamps, Candle Lamps and shades-price guide included-\$11.95 plus postage, Helen Greguire, 103 Trimmer Road, Hilton, New York 14468

CARNIVAL GLASS TUMBLERS-Author Richard Owens-order from Mr. Don Brown, Wallace-Homestead Book Company, 1912 Grand Ave., Des Moines, Iowa 50303

IMPERIAL CARNIVAL GLASS-THE EARLY YEARS-\$9.95, FENTON CARNIVAL GLASS-THE EARLY YEARS-\$9.95, New price guide 1981-82 edition-\$3.95-MILLERSBURG THE QUEEN OF CARNIVAL GLASS-\$8.95, RARITIES IN CARNIVAL GLASS-\$8.95, THE STANDARD ENCY. OF CARNIVAL GLASS-650 different full color patterns photographed, 223 page hardbound illustrates and evaluates Dugan, Fenton, Imperial, Millersburg, Northwood, Minor American, English Carnival, and more-\$24.95, Collectors Books, Paducah, Kentucky.

CARNIVAL GLASS PRICE GUIDE-Sherman Hand - Charlotte Williams-\$5.95 pp. Order from Sherman Hand, 127 Olympic Circle, Vacaville, Ca 95240 or Charlotte Williams, 630 N Lower Sacramento Rd., Lodi, Ca 95240

FENTON GLASS-THE FIRST 25 YEARS- 144 pages, 72 in full color, more than 400 items pictured in Fenton's carnival and iridescent "stretch" colors, rare catalogue reprints (some in color), a complete history of the factory's early years, from 1907 to 1932, \$15.95 for softcover edition with price guide, \$20.00 for limited edition hardbounds. Order from the author, William Heacock, P O Box 27037, Columbus, Ohio 43227.

Angela Hallam's 52 page fully illustrated paperback-first book to tell about the English-made Carnival-\$4.85 surface postage, air mailed \$5.85. Order from Wise Books, 82 Hart Lane, Reigate, England, RH2 7EA

CARNIVAL GLASS AUCTION PRICE REPORT-A list comprised of 2400 sale prices of Carnival that sold between June 1979 and April 1982. Patterns by Hartung name and the information includes date sold, price and auctioneers name for easy reference-Single copy price for 8 1/2" X 7" list \$8.00 pp-Quantity and club discounts available. Al & Wendy Rettke, 14226 East 143rd Lane, Burnsville, Minn 55337.

OTHER REFERENCE MATERIAL

Presznick's "Encyclopedia of New Carnival and Iridescent Glass". A great reference book with color plates galore and prices, \$19.95. Reichel's "Modern Carnival Glass." 100 illustrated pages of Carnival made since the 1960's. Volume 1, \$4.00, Volume 2, \$4.95, Price Guide for both volumes \$2.50. Add \$2.00 for shipping and insurance. Theodore A. Parent, Box 596, RD 1, Canfield, Ohio. 44406

"Encore by Dorothy" books 1 and 2. A series of books on new reproduced Carnival Glass, giving information on the patterns and colors that are being reproduced. An invaluable asset to the old carnival collector, possibly saving him many dollars by knowing what has been reproduced. Price for each book is \$7.70 postage paid. Be sure to state which book you want. Dorothy Taylor, Box 11734, Kansas City, Missouri, 64138

FOR SALE

Alaine Pennetti, 23 Nancy Lane, Ft. Myers Beach, Fl 33931
PH 813-413-3918

M	EI	Brooklyn Bridge	250
P	EI	Heavy Grape plate 7"	60
G	EI	Greek Key bowl (N) dome ftd octagon shape	55
P	EI	Blackberry Wreath 5 1/4 unlisted	45
M	EI	Rays & Ribbons bowl 10"	45
M	EI	Octagon water set 7 pc	225
M	GI	Hobstar Band tumbler	35
P	EI	Peacock at Fountain spooner (N)	90
M	EI	Flute & Cane bowl hat shape 8 1/4" unlisted	35
G	EI	Butterfly & Berry butter bottom	90

Eva Backer, 12 Sherwood Rd, West Hartford Ct 06117 PH 203-232-1027

G	EI	Cosmos plate Millersburg fluted	60
A	EI	S Repeat punch cups 4 ea	30
M	EI	Pointsetta milk pitcher	65
C		Shrine champagne Pittsburg 1909 tobacco leaves	90
A		Fishermans mug	90
M	EI	Shell ftd Hand pg 125	28
M	EI	Butterfly & Berry butter	90
M	EI	Stag & Holly 10 1/2 ftd	85
M	EI	Maple Leaf tumblers ea	20
W	EI	Brocaded Acorn bon bon two sides up	35

George Loescher, 2420 Park Ave, Beloit, Wi 53511 PH 608-362-3104

A	EI	Nesting Swan	185
G	EI	Tracery bon bon 2 minor nicks	225
G	EI	Dandelion water pitcher cracked	75
S	EI	Ranger vase unlisted rare	100
IB	EI	Peacock at Urn N 10" bowl	375
PO	EI	Millersburg Heavy Grape large bowl rare	600
M	EI	Millersburg Cherry compote rare	675
M	EI	Sweetheart cracker jar rare	1000
M	EI	Multi Fruits & Flowers punch set 4 cups	1000
G	EI	Peter Rabbit plate rare	2200

Lorene Sebaugh, 9116 Donelson Dr, St. Louis, Mo PH 314-843-6122

A	EI	G/C cookie jar & lid (N)	310
R	EI	Vintage bowl 10"	1195
M	EI	Stag & Holly rose bowl large	250
G	EI	Good Luck bowl	125
M	EI	Punch bowl base 3 cups	120
B	EI	Apple Tree water set 6 tumblers	460
A	EI	Butterfly & Fern water set 5 tumblers	490
M	EI	Lustre Rose water set 5 tumblers	125
M	EI	Vintage waterset 4 tumblers	130
M	EI	Fashion pitcher 1 tumbler	130

S. F. Kell, 919 Thomasville Rd, Houston, Mo 65483 PH 417-967-4414

M	EI	Butterfly & Berry tumblers 5 ea	25
B	EI	Butterfly & Berry tumblers 4 ea	35
M	EI	Grapevine Lattice tumbler rare	28
M	EI	Cosmos & Cane adv tumbler rare	185
B	EI	Lattice & Grape	35
G	EI	Little Flowers 7 pc berry set	265
W	EI	Orange Tree 5 1/2 ftd bowl 5 ea	35
P	EI	Leaf & Beads rose bowl	65
W	EI	Grape Delight six ftd chips on ft	45
P	EI	Raspberry tumbler	35

Diane Fry, 5395 Middleton Rd, San Diego, Ca 92109 PH 714-272-1663 after 6 PM

A	EI	Butterfly & Berry spooner	110
P	EI	G/C candle holder	125
B	EI	Fine Rib vase 10 1/2 Fenton	29
LM	EI	Golden Wedding bottle pint	38
M	EI	Propeller compote small	35
G	EI	Beaded Cable/Rays int ftd candy bowl N	53
B	GI	French Knots hat	37
B	EI	Blackberry Min compote small	65
B	EI	Captive Rose plate 9"	150
G	EI	Mayan bowl 7 1/2 N/H collar base chip	68

Paul Jankauer, 5 Ct. Of Overlook Bluff, Norbrook, Ill 60062
PH 312-478-0800 days Monday thru Friday

G EI	Hearts & Vine bowl	50
M EI	G/C hatpin holder	115
M EI	Peacock at Fountain covered sugar	65
P EI	Beaded Cable ftd rosebowl	85
A EI	Butterfly two handled bon bon	49
B EI	Stag & Holly spatula ftd bowl	65
M EI	Good Luck bowl	55
A EI	Dragon & Lotus spatula ftd bowl	49
M EI	Lion bowl	85
R EI	Blackberry hat shape	135

Charlotte Tweddell, 4908 Darnton Ln, Louisville, Ky 40216
PH 502-447-1670

G EI	Raspberry pitcher 6 tumblers pitcher has crack	300
------	--	-----

George McGrew, 6800 Woodward, Overland Park, Ks 66204
PH 913-262-8822

AO EI	Pastel N round basket	210
W	N round basket	180
A	Fine Cut & Roses rose bowl	85
W	Leaf & Beads rose bowl	190
TB	Leaf & Beads rose bowl	180
M	Mary Ann vase pisa style	50
	Peach Carolina Dogwood bowl overlay wore on center of bowl	40
A	Peacock at Fountain water set	475
M	Star & File bowl	25

Edna Burns, 145 Union St, So. Weymouth, Ma 02190 PH 617-335-3178

M EI	Acorn Burr punch set 5 cups (N)	300
M EI	Orange Tree hat pin holder	110
M EI	Vineyard water pitcher	90
P EI	Grape Delight 6 ftd nut bowl	65
B EI	Fenton open edge basket lt Azure blue	35
M EI	Waffle Block punch set 6 cups	110
G EI	Dragon & Lotus 8" bowl ice cream shape	50
B EI	Maple Leaf tumbler	35
B EI	Grape & Gothic Arches tumbler	35
A EI	Panelled Dandelion tumbler	35

Hubert Shelton, R#1, Mumfordsville, Ky PH 502-528-5893

M EI	Orange Tree ftd 7 ea	35
M EI	Stag & Holly 9" ftd bowl	60
S EI	Diamond Ring bowl flk on edge not bad	20
M EI	Pony bowl	60
M EI	G/C (N) Thumbprint flared hat shape rare	30
M EI	Raspberry Wreath open edge bowl sm flk	25
P EI	Flute 7 pc berry set	150
B EI	Persian Medallion 2 handled nappy	35
B EI	Painted Cherry 7 pc water set	200
LM EI	Golden Harvest wine decanter w/stopper	115

Jos Mello, 535 Fish Rd, Tiverton, R I 02878 PH 401-624-2174

PO EI	Stippled Flower bowl	40
A EI	G/C water set 5 tumblers 2 sm chips on thumbprint	325
M EI	Butterfly & Berry tumbler 4 ea	15
M EI	Sunflower bowl spatula ftd	25
M EI	Lattice & Grape tumblers 2 ea	15

Barbara Nelson, RFD 4 Box 155, Laconia, N.H. 03246 PH 603-293-7246

AQ EI	Tree Trunk vase 10" (N)	35
PO GI	Bells & Beads bowl	35
M EI	Daisy & Plume rose bowl (N)	40

VS GI	Acorn bowl shades to m	60
LM EI	Flowering Dill hatshape	20
P EI	Diamond water pitcher sm chips under spout rough base	50

Jeanette Blackburn, 408 Military Dr., Ceor d' Alene, Id 83814 PH 208-667-2908

M EI	Long Thumbprint sugar bowl	12
M EI	Daisy Plume compote	27
M EI	Orange Tree sm compote	20
G EI	Stippled Rays bon bon	20
M EI	Lattice & Grape tumbler	20
A EI	Fine Cut & Roses ftd bowl	32
A EI	Leaf Rays nappy	22
M EI	Question Mark bon bon	18
M EI	Coin Spot compote	25
G EI	Daisy Plume compote	38

Ray Hitchcock, RR1 Box 301, Winterset, Ia 50273 PH 515-462-2074

PO EI	Fruit Salad punch cup	90
B EI	Orange Tree mug	45

Bonnie Parkhurst, Rd 1, Oneida, N Y 13421 PH 315-337-9118

M GI	Fanciful bowl	35
M EI	Heavy Grape large berry bowl	29
M GI	Pony bowl 2 worn spots	28
P	G/C (N) punch bowl base med size	35
A EI	Scroll Embossed small berry bowl	15
G EI	Birds & Cherries compote	35

Frances Gannon, 8743 Branton, Highland, Ind 46322 PH 219-923-8134

AO EI	Three Fruit bowl	285
R EI	Blackberry hat hidden sm under rim flake	125
IB EI	Grape Arbor (N) tumbler	145
M EI	Peacock at Fountain punch bowl set 6 cups (N)	375
G EI	Millersburg 6" Blackberry Wreath ruffled bowl	45
M EI	Orange Tree mug	22
M EI	Lustre Rose covered butter	45
M EI	Lustre Rose tumbler	20
P EI	Singing Birds mug sm rough spot on side	50
DM EI	Swirl tumbler (N)	20

Mary Kesterson, 3020 Mesa Rd, Willow Park, Tx 76086 PH 817-441-8410

B EI	Apple Blossom Twig plate	110
M EI	Kittens cup & saucer	225
P EI	Singing Birds mug mint	68
M EI	Cathedral Chalice 7"	165
A EI	G/C card tray 6"	125
P EI	Garden Path 5" sauce	75
W EI	Two FLOWers 10" bowl ftd rare	350
G EI	Three Fruits bon bon stemmed	95
AO EI	Beaded Cable rose bowl	220
M EI	Nesting Swan bowl	185

Al Retke, 14226 East 143rd Lane, Burnsville, Mn 55337 PH 612-432-7489

R EI	Dragon & Lotus collar base low bowl	450
R EI	G/C cereal bowl	295
PO EI	Four Fowers sm plate	85
G GI	Holly Sprig 6 1/2 ice cream bowl	40
A EI	Carnival Holly 9 1/2 plate super color flake	140
P EI	Singing Birds mug	55
M EI	Waterlily ftd sauce	25
IB EI	Drapery candy dish (N) flake on ft	55
DM EI	Peacocks on Fence plate	165
B EI	Peacocks on Fence stippled plate (N)	195

Donna Embree, 3315 E. Pershing Rd, Lincoln, Nb 68502 PH 402-423-2096

M EI	Fruit Lustre tumbler	6
M EI	Lattice & Daisy tumbler	12
M EI	Rex tumbler rough on bottom 2 for	5
AO EI	Fine Cut & Roses candy dish Fancy Int ground ft	175
A EI	Lined Lattice vase jigger on one point	15
M EI	Stippled Singing Bird mug crack	7
M EI	6" Crackle plate	6

John Resnik, 4290 Jackson Ave, Culver City, Ca 90230 PH 213-839-1588

A EI	Fruit Salad punch bowl & base rare	325
M EI	Diamond & Daisy cut or Mayflower 7 pc water set 1 tumb repaired on base	295
P EI	G/C covered compote flake on inside of lid	250
P EI	G/C Sweetmeat compote	195
AMB EI	Stag & Holly 11" ftd bowl very rare	395
M EI	Butterfly & Berry 6 pc table set	265
G EI	Town Pump very rare hairline crack from top to bottom	250
VO EI	Peacock & Grape 8" bowl scarce	495
IGO EI	Dragon & Lotus spatula ftd bowl rare	675
M EI	Millersburg Hanging Cherries 6 pc table set	325
SASE for over 1000 piece lot		

Rick Kojis, 2020 So 80 St, West Allis, Wi 53219 PH 414-327-0321 aft 4 PM

R EI	G/C 7 1/2 ruffled bowl	335
PO EI	Flowers & Frames dome ftd deep bowl	75
PO EI	Leaf Rays nappy sm flake on collar base	15
M EI	Water Lily & Cattails whimsey toothpick	35
Olive EI	Thin Rib vase N	20
P EI	Imperial Glass Co. adv paperweight cracked	115
A EI	Radium Nesting Swan bowl surface flake at edge	125
AO EI	Fine Cut & Roses candy dish chips at bottom	110
S EI	Rococo vase	50
DM EI	Lion round shallow bowl	85

Edward Henderson, 1111 N. College, Stuttgart, Ark 72160 PH 501-673-8757

M EI	Open Rose ftd 9" bowl cracked	25
M EI	Peacock & Grape berry Spray bowl chip on base	40
C EI	Persian Medallion 8 1/2 bowl 4 minute cracks	20
LM EI	Ribbed 9" bowl	35
M EI	Rococa 4 ea minute chip	10
A EI	Stippled Ray 9 1/2 bowl (N) sm chip base	40
G EI	Stippled Ray 8 1/2 bowl (N)	50
A EI	Twelve Point 8" bowl	40
M EI	Panthers & Bleeding Heart minute crack	50
LM EI	Rose covered butter dish	45

Paul Berube, 11 Doris Ave, Tiverton, R I 02878 PH 401-625-5303

M EI	G/C 6 pc water set N	165
M EI	Octagon tumbler ground base 2 ea	15
M EI	Imperial Grape decanter 4 wines stopper damaged	75
M EI	Octagon decanter 4 wines stopper damaged	100
P EI	Fishermans mug	65
M EI	Imperial Grape tumbler 3 ea	12
M EI	Octagon Variet tumbler collar base 2 ea	12
B EI	Stork & Rushes X band tumbler	25
GLM EI	Beaded Block sugar	12
M	Diamond Ring 7 pc berry set	30

Robert Schneider, 10173 Marshall Pond Rd, Burke, Va 22015 PH 703-250-8807

M EI	Orange Tree orange bowl 3 ftd 10"	66
M EI	Mary Ann 2 handled vase	35
P EI	Leaf & Beads 3 ftd rose bowl 2 ea	59
A EI	Cherry Wreath master berry & 3 sauce dishes	215
B EI	Carnival Thistle 8 3/4 bowl	33
C EI	1909 Shriners tobacco leaf champagne Louisville, Ky	65
C EI	1910 Shriners New Orleans champagne glass	65
C EI	1911 Shriners Rochester, N Y champagen glass	65
M EI	Fenton Advertising basket John H. Brand Furniture Co Wilmington, Del 2 ea	49
A EI	Daisy & Plume 5" compote	33

Omer Sweeney, 28 Esmond St., Esmond, R I 02917 PH 401-231-4108

P EI	G/C perfume bottle N	450
P EI	G/C covered sugar N	135
P EI	G/C 8 pc middle size punch set N	485
P EI	G/C orange bowl N	195
P EI	G/C centerpiece bowl N	350
B EI	G/C banana boat N	225
M EI	dresser tray N	140
R EI	G/C Fenton 7 1/2 bowl	450
IG EI	Peacock on Fence N bowl	300
AQ FI	G/C candle sticks N one is cracked	100

Dick Wetherbee, 847 Stafford St., Rchdale, Ma 01542 PH 617-892-4420

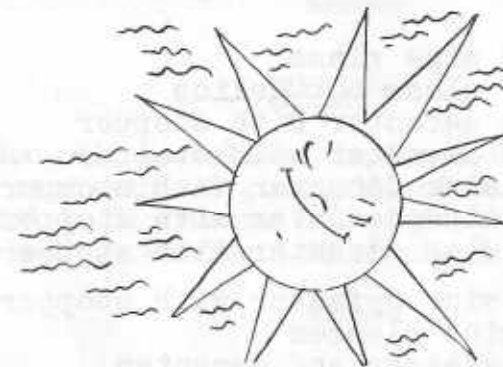
PO GI	Coinspot compote	28
PO EI	Raindrops w/Keyhole back 9" dome ftd bowl	75
W EI	Hall lamp globe cut & etched cone shaped	42
PO EI	Swirl rib 10" vase	35
G EI	Wild Rose w/Rays inside 7 1/2 3 ftd bowl	45
PO EI	Stippled Single Flower w/rib inside tri corn bowl	45
P EI	G/C N punch cups 5 ea 20 all	90
PO EI	Single Flower 9" bowl ruffled	42
G EI	Persian Medallion 5" sauce dish	24
PO EI	Stippled Petals dome ftd 2 sides up banana boat shape	85

Patricia Craver, Box 8015, Allandale, Fl 32023 PH 904-788-5315

LM EI	Out Flowers vase	40
M EI	474 punch cups 8 ea	17
M EI	(N) Swirl tumbler	30
M EI	Buttermilk goblet	30
B EI	Pinecone bowl 6"	35
M EI	Pinecone bowl 7"	25
LP EI	(N) Flute sherbets 2 ea	25
M EI	Rambler Rose tumbler	20
M EI	Open Rose 9" plate	35
M EI	Persian Medallion 6 1/2 plate	30

Delores Versprille, 200 Dake Ave, Rochester, N Y 14617 PH 716-544-4688

G GI	Singing Birds tumbler	45
P GI	Strutting Peacock sugar & creamer with cover pr	90
B GI	Grape & Gothic Arches tumbler ea	45
M GI	Beaded Shell sugar & creamer ea	50
M GI	Vintage or Many Fruit punch cups have 2 ea	20
M GI	Waffle Block punch cups 4 ea	12
B EI	Strawberry bon bon	50
P GI	Wreath of Roses compote	40
M GI	Wreath of Roses compote	35
P GI	Birds & Cherries compote	50



WANTS

Mrs. Wm. McGarrah, Rt 1, Lowell, Ark 72745 PH 501-248-1426

A Panelled Dandelion pitcher

Audree Pollock, 213 Greenvista Dr, Pittsburg, Pa 15237
PH 412-364-4430

M Epergne Lilly any pattern

Wayne Gotz, 6153 So Robert Ave, Cudahy, Wi 53110

R H.O.A.C.G.A. whiskey decanter set

R H.O.A.C.G.A. water pitcher set

John Stewart, 99 Aster Circle, Weymouth, Ma 02188 PH 617-337-
1304 anytime

G Sunburst & Diamonds wine glass

G Imperial Grape wine glass not Helios

G Imperial Grape wine decanter with stopper

S Imperial Grape wine decanter with stopper

M Diamond & Sunburst wine decanter with stopper

P Diamond & Sunburst wine decanter with stopper

A Diamond & Sunburst wine decanter with stopper

G Diamond & Sunburst wine defanter with stopper

Any brocaded pattern wine glasses

Any dark octagon wine glasses and decanter

Maxine Twedt, 44646 Cedar Ave, Lancaster, Ca 93534

B Pinecone 6" plate

M Ruffled Roundup plate or bowl

PO Ruffled Roundup plate or bowl

G Pinecone ice cream shape sauce dish

Fenton Little ruffled baskets

G Stippled, Rays, plate

Byron Davidson, 4406 McPherson 10-N, St. Louis, Mo 63108

G Anything with exc irid

All itmes with roses as part of design

Persian Garden an Medallion items

Captive Rose items

Punch sets and water sets

Plates small to chop size

N Peacock on Fence bowls, plates pie crust edge preferred

G G/C Fentons orange bowl with Persian Medallion int

Any tumblers in mint condition with super irrid

B Rambler Rose water pitcher

Larry Keig, 301 Union St, Fayette, Ia 52142 PH 319-425-4467

DM Fantail 5" berry bowl

DM Hearts & Trees 5" berry bowl

M Amana, Ia souvenir pieces marked Near Cut or unmarked

M Britt, Ia souvenir basket

M Corydon, Ia souvenir

M Dundee, Ia souvenir mug

M Crackle auto vase with holder

G Pulled loop vase 11-12"

Charlotte Tweddell, 4908 Darnton Ln, Louisville, Ky 40216
PH 502-447-1670

G Fenton Vintage epergne lily

G Fruits & FLOWers bon bon N

M Fashion punch cups

Diane Fry, 5395 Middleton Rd, San Diego, Ca 92109 PH 714-
272-1663 after 6 PM

P Signed Nautilus

P Thumbprint master berry bowl G/C

P Thumbprint small berry bowl G/C

S. F. Kell, 919 Thomasville Rd, Houston, Mo 65483 PH 417-967-4414

B Stork & Rushes pitcher or will sell tumblers
S Soda Gold tumblers need 6 or will sell pitcher

Eva Backer, 12 Sherwood Rd, West Hartford, Ct 06117 PH 203-232-1027

W Orange Tree punch base only
A G/C (N) sugar bottom

Hubert Shelton, R#1, Munfordville, Ky PH 502-528-5893

DM Butterfly & Berry water pitcher
B Floral & Grape tumblers need 4
DM Grapevine Lattice tumbler & pitcher
DM Rambler Rose tumblers need 2
IB G/C cologne
B G/C cologne
P G/C cologne
DM Orange Tree spooner
G Daisy Drape vase
M Diamond Sunburst wines

Jos Mello, 535 Fish Rd, Tiverton, R I 02878 PH 401-624-2174

M Cherry & Thumbprint base to butterdish
W Orange Tree base butterdish
P Imperial Grape punch cups need 4
A Wreath of Roses punch base only
G Fenton basket

Charles Perry, 8641 Lakeshore Dr., Southaven, Ms 38671

M Orange Tree covered butter top only

42

Ray Hitchcock, RRI Box 301, Winterset, Ia 50273 PH 515-462-2074

B Butterfly & Berry creamer
M Panther 5" berry dishes ruffled need 3
M Grape Arbor pitcher
M G/C tobacco jar lid

Ethel Bond, Box 934, Warsaw, Mo 65355 PH 816-438-2477

W Orange Tree punch bowl base

Al Retke, 14226 East 143rd Lane, Burnsville, Mn 55337 PH 612-432-7489

IB Hearts & Flowers compote
IG Hearts & Flowers compote
DM Hearts & Flowers compote
AO Leaf & Beads rosebowl pastel
A Singing Birds table set
G Singing Birds table set
M Singing Birds table set

Byron Davidson, 4406 McPherson 10-N, Hampton Hall, St. Louis, Mo 63108

IB Fenton basket
IB Persian Medallion bon bon
B Rambler Rose water pitcher & tumbler
G Wreath of Roses punch bowl & cups Persian Medallion int preferred
G Rose Show bowls and plates also any other color
G Poppy Show bowls and plates also any other color
W Persian Garden sm ice cream bowls
G Fenton Grape & Cable orange bowl with Persian Medallion int
G Greek Key pieces
Fanciful bowls, plates or round plates any color

43

Jamie Santa, 485 Klamath Dr., Vacaville, Ca 95688 PH 707-448-2694

- P Drapery vase
- M Drapery vase
- G Drapery vase
- S Drapery vase
- PO Drapery vase
- S Bushel basket
- V Bushel basket
- A Bushel basket
- M Peacock at Fountain punch bowl top

Rick Kojis, 2020 So 80 St., West Allis, Wi 53219 PH 414-327-0321 after 4 PM

- AO Any pattern punch cups
- M Zippered Loop sm size finger lamp
- S Zippered Loop sm size finger lamp
- AO Good Luck bowl
- AO Peacocks on Fence bowl
- AO G/C bowl
- IB Dandelion tankard pitcher N
- IB Daisy & Plum rose bowl
- IB Beaded Cable rose bowl
- IB Dandelion Knights Templar mug N
- IB Daisy & Drape vase

John Resnik, 4290 Jackson Ave, Culver City, Ca 90230 PH 213-839-1588

- P Many Fruits punch base

44

Omer Sweeney, 28 Esmond St., Esmond, R I 02917 PH 401-231-4108

- M G/C candle stick N
- M Butterfly & Berry water pitcher

Burney Talley, 1814 Slate NW, Albuquerque, N M 87104 PH 505-242-1261

- P Imperial Grape wine decanter stopper
- P Imperial Grape wines 4
- M Octagon wines 4
- A Fluffy Peacock tumbler 1 radium finish
Corn bottles any color
- M 474 tumblers 6
- B Blueberry water set



45