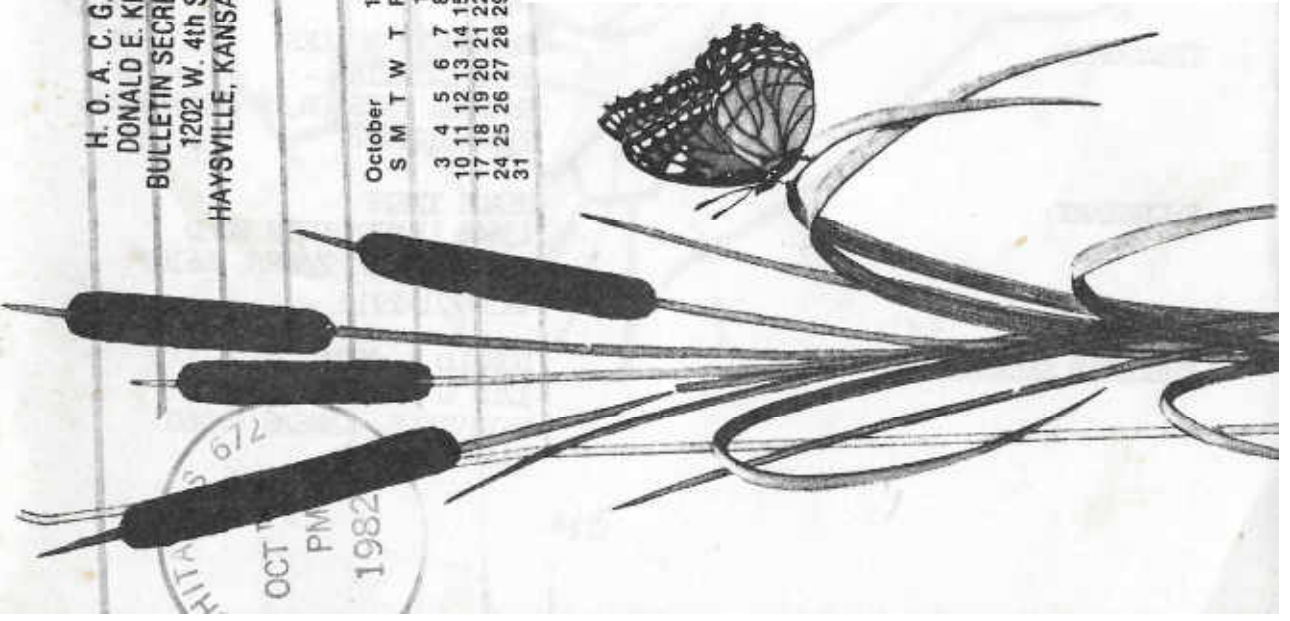


H. O. A. C. G. A.
DONALD E. KIME
BULLETIN SECRETARY
1202 W. 4th ST.
HAYSVILLE, KANSAS 67060



FIRST CLASS

October 1982
S M T W T F S
3 4 5 6 7 8 9
10 11 12 13 14 15 16
17 18 19 20 21 22 23
24 25 26 27 28 29 30
31





Heart of America Carnival Glass Association, INC.

MEMBERSHIP JUNE TO JUNE
\$10.00 PER COUPLE OR SINGLE

PUBLISHED 15th OF
EACH MONTH

PRESIDENT: GEORGE O. MCGREW JR.
6300 WOODWARD
OVERLAND PARK, KANSAS 66204
913-262-8822

VICE PRESIDENT: GEORGE BOLLES
5204 CATALINA
SHAWNEE MISSION, KANSAS 66205
913-432-5438

TREASURER: ELIZABETH BOLLES
5204 CATALINA
SHAWNEE MISSION, KANSAS 66205
913-432-5438

SECRETARY: DIANE TREFF
13646 LEAVENWORTH ROAD
KANSAS CITY, KANSAS 66109
913-721-2917

BULLETIN SECRETARY: DONALD E. KIME
1202 W 4th ST.
HAYSVILLE, KANSAS 67060
316-524-3123

SEPTEMBER MONTHLY MEETING

The September monthly meeting of the H.O.A.C.G.A. was called to order on September 26, 1982, at 2:00 P.M. by President George McGrew. There were 33 members present.

The minutes of the August meeting were read and approved. The Treasurers report was given by Treasurer Elizabeth Bolles. Elizabeth reported that our cash on hand as of August 21, 1982 was \$14,749.71. Total receipts from August 22, through September 26, were \$1708.35. Total disbursements during the same period were \$2086.35. Leaving a balance of cash on hand of September 26, 1982 of \$14,371.71. The report was approved as read.

Convention Chairman Robert Grissom gave a brief report on the progress of convention plans. He announced that there has been an increase in cost for the banquet meal. Plans now are to stay with a menu like we had last year.

The entire convention committee will meet with Hotel management on October the 23rd, to further discuss convention plans.

Cooley Miller our Corn Vase Souvenir Chairman gave an interesting report on the possibility of gilding the remainder of our Ice Blue Corn Vases. Cooley had shipped 4 of our souvenirs to the Fenton factory for experimentation. (The samples were on display to us as Cooley gave his report.)

Robert Grissom made a motion to offer the 4th sample for \$45.00, until the end of October, to members who have already purchased an original 1982 Ice Blue Corn Vase. Offering the remaining of the gilded vases, if any, on November 1, to any member who wishes to make the purchase. George Bolles seconded the motion. The motion passed.

Robert Grissom made a motion to cut off sales for the Original 1982 Ice Blue Corn Vase September the 30th, 1982. George Bolles seconded the motion. The motion passed.

Souvenir Chairman Roland Kuhn gave a report on the 1983 Loving Cup. The costs of changing the date on the mould will be approximately \$180.00. Sample pieces of our souvenir should be arriving soon.

President McGrew announced that he had some response from Mr. K. Goslee an auctioneer, who may be interested in our convention auction.

A motion was made by Cooley Miller to allow \$50.00 for advertising during the National Carnival Glass Week. Seconded by Davis Shikles.

The motion passed.

President McGrew will have a display at the Antique Center located at 10919 W. 63rd, Shawnee, Kansas, on September 30th, Oct. 1, 2, & 3rd. The display will hopefully attract area prospective members and to introduce our club to the local area. Membership applications distributed from the display will be marked so that we may determine actual response.

Dorothy Taylor presented #1 of a series of 9 or 10 miniature baskets to be made over a period of 2 or 3 years. Number one being a kitten basket in Aqua Opal.

Roland Kuhn announced that John Britt has had surgery, and that Lucile has also been ill.

Rosa Grissom made a motion that the Board make a recommendation on the possibility of charging for items listed in our monthly bulletin in the For Sale section, and that this recommendation be put before the general membership at our Annual meeting in April. Davis Shikles seconded the motion. Motion passed.

Cooley Miller made a motion to appoint a committee to establish some proposals needed to improve the Clubs' financial status. This committee to have at least 3 members. Seconded by George Bolles. The motion passed.

President McGrew accepted volunteers from the floor to be on this committee. The committee will consist of two Board members; President McGrew, Treas. Elizabeth Bolles, Committee Chairman Cooley Miller, and Charles Mochel, and Viola Shikles.

Rosa Grissom made a motion we adjourn. Davis Shikles seconded the motion. It passed.

Our next meeting to be October the 24th, at the home of Nadine and Bernard Paulsens', located at 700 Purdom, Olathe, Ks. Directions to be elsewhere in the bulletin. There will be dinner before the meeting at 12:30, members are asked to bring a covered dish and your table sets. Meeting to start at 2:00 P.M.

Diane Treff-Secretary

George O. McGrew Jr. President

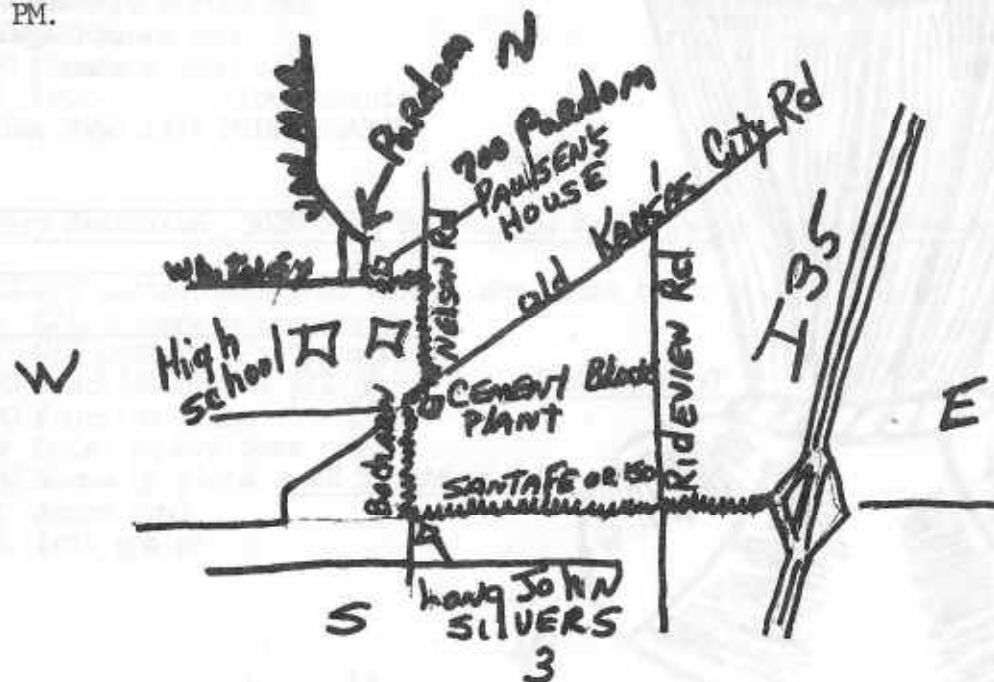
1983 Souvenir Progress

Things are beginning to shape up on the 1983 souvenir. I have just talked with Mr. Frank Fenton again. Frank has advised me that they will be able to change the 1979 date in the mould to 1983 with no problem and also place the Fenton mark in the bottom. This will be done right in the Fenton Factory. This will be a great help and will save us shipping the mould back and forth to Wheeling where the mould was made. Frank also had ask me about running a few samples to see how this custard with marigold overlay would look and also see if there would be any major problems with the mould or any of the process. This would really help for us on the final run. At the last meeting we discussed this and all thought it was a real good idea, so I told Frank to go ahead and run the samples as soon as he could and then send them to us to look at. Now we are real anxious to see the samples. Of course you all know the 1983 souvenir will be the Loving Cup in custard glass with the marigold overlay. We think this will be a beautiful souvenir.

Roland Kuhn
1983 Souvenir Chairman

OCTOBER MEETING

Mr. & Mrs. Bernard Paulsen & Mr. & Mrs. Robert Schlagel will be October hosts at Paulsens house, 700 Purdom, Olathe, Kansas. October 24, 1982. They will furnish the meat and drinks and everyone else bring a covered dish and table set. We will eat at 12:30PM and the meeting will be at 2:00 PM.





Gold Band on Rim

Gold-Horseshoe & Whip

Gold on Cable

Gold on Rim Of Base

PLEASE MAKE CHECKS PAY-
ABLE TO H.O.A.C.G.A.
AND SEND THEM TO THE
SECRETARY:

Diana Treff
13646 Leavenworth Rd
Kansas City, Ks
66109

WILL PICK UP:

_____ 1982 Gold Gilded
Ice Blue Corn
Vase (s) at \$45
each.

PLEASE MAIL:

_____ 1982 Gold Gilded
Ice Blue Corn
Vase (s) at \$45
Please add \$3
postage for each
vase.

PLEASE PRINT FULL NAME AND ADDRESS

ATTENTION ALL CARNIVAL GLASS MEMBERS

Something new has been added to the corn vase. Whether you are a new or old member you will like what we have to offer.

Due to the slow sales of H.O.A.C.G.A. 1982 ICE BLUE CORN VASE, I talked to Mr. Frank Fenton. Mr. Fenton suggested that I ship him four vases for him to experiment with. We now have a sample back which H.O.A.C.G.A. has approved and accepted. This is the first souvenir in Carnival Glass offered by a club with hand gold gilding. There are three gold rings, one at the top, one at the bottom, and the cable on top of the base. Also the three horseshoes and whips are gold gilded. This process will be baked in the lehr at a high temperature for long lasting. The sample is beautiful.

Since we have a limited supply, we feel it is only fair to offer for 30 days to the members who have already purchased a vase, then the balance to members who have not purchased a vase on a first application received bases. The price will be \$45.00 plus \$3.00 postage, which includes this beautiful hand work. Send your application to day to the Secretary, Diana Treff, 13646 Leavenworth Rd, Kansas City, Kansas 66109 with full remittance. Get your name on the list as soon as possible. Allow for shipping and decorating time.

Souvenir Chairman
Cooley Miller

Limited Quantity.....

Available to those members who purchased an original Ice Blue Corn Vase (1982) till October 31, 1982. On November 1, 1982 Available to ANY member wishing to make the purchase.....

*NOTE- Those members that purchased one Ice Blue Corn vase are eligible to purchase one Gold Gilded Vase. Those who have purchased two Ice Blue Vases are eligible to purchase two Gold Gilded Vases.

A NOTE FROM YOUR SECRETARY

Dear Fellow Carnival Lovers,

I decided it high time that I submit a letter to the bulletin saying "Hello" to all those members who live out of town and I do not get to see monthly. Do not think that I have not wanted to until now, but believe you me, you all can sure keep a gal busy... (How Lucile managed to write educational articles, travel, keep up with the book work, etc...I will never know.) HONESTLY, it has been fun. I have met alot of terrific people through my correspondance.

To those of you who were not aware that H.O.A.C.G.A., has a new Secretary, this now explains why your membership cards and Rosters took sooooooo long to receive this year.

If any of you send me questions in your letters pertaining to the identification of carnival, YOU can expect an even longer wait for a reply. I have only been collecting for a couple of years'. But these are the letters I love. If I can not research and find you the answer, then I go to my Grandparents (in-laws) Sadie and Herb Treff, if this does not work then I can ask various local members who are always ready to help. I often take your letters and pictures to our monthly meetings and share them with other members. I NEVER, EVER give up on finding an answer.

To those of you 500 or 1000 miles away, do not give up on me. If you happen to discover the maker or identify the piece please notify me. This is my way of learning too.

By the way..., the chocolate finger prints you find on your envelopes are not the newest U.S. Postal Mark, they belong to my two year old son who loves to help and hinder.

Keep your letters coming, introduce your friends to Carnival, come see us at our convention in April, and Happy Hunting. (To those newer more naive collectors, as Bill and myself, Happy "Wise" Hunting).

I have got to sign off for now, the postman is here with a sack full of mail, and DeWayne thinks it is Santa two months early.

Sincerely,
Diane Treff your Secretary

P.S. To Roland, Donald, SADIE, George, Linda, George, Elizabeth, John,

Lucile, HERBIE, and others who last April wamed me of this fast but challenging pace,... You may all now say "I TOLD YOU SO".

EDITORS NOTE:

We all thank you for the great job you are doing as our Secretary. There are so few who realize the work that goes into an organization such as this one. It takes much of our time that perhaps we would like to spend at other things many times. We have so few who are willing to jump in as you have and take the reins of the responsible job you have.

A special thanks to Florence and Ralph Mullins and to all other members who sent cards and offered their condolences due to the loss of my father in August.

Love and May the Lord be with you all,

Diane Treff

HEART OF AMERICA CARNIVAL GLASS ASS'N., INC.
STATEMENT OF ASSETS AND LIABILITIES ON A CASH BASIS
MAY 31, 1982

ASSETS

Cash in bank - Mid-American NOW a/c	\$ 3,645.63
Investments	
Mid-American Repurchase Agreement - a/c #1047 Certificate matures 7-1-82 Bearing interest @10.50%	10,583.15

14,228.78

LIABILITIES AND FUND BALANCES

Membership fund, beginning of period 6-1-82	13,233.81
Net increase to fund for year	994.97

Total Liabilities and fund balance 14,228.78

See Accountant's compilation report

HEART OF AMERICA CARNIVAL GLASS ASS'N., INC.
STATEMENT OF RECEIPTS AND EXPENSES ON A CASH BASIS
FOR THE YEAR ENDED MAY 31, 1982

RECEIPTS

Membership dues (923)	\$ 9,230.00
Sale of Souvenirs during fiscal year:	
1980 (32) \$ 1,115.00	
refunded -1 (35.00)	\$1,080.00
1981 91 6,825.00	
refunded -3 (225.00)	6,600.00
1982 270 10,800.00	
refunded -3 (120.00)	10,680.00
Net total - Souvenirs	18,360.00

Sale of prior year souvenir - whiskey set (1)	225.00
Sale of books and postage received	1,121.25
Convention Receipts (Schedule A)	8,853.00
Auction lists sold	56.50
Bolos - less cost	418.57
Miscellaneous Income	7.00

Interest Income:

Mid-American Bank - repurchase agreement & CD	1,376.97
Mid-American Bank NOW a/c	300.19
Farm and Home Certificate	269.98
	1,946.54

Discounts earned for timely payments to suppliers	23.74
Postage reimbursement	340.99

Total receipts 40,582.59

DISBURSEMENTS

Club expenses (Schedule B)	\$15,150.06
Souvenir expense (Schedule C)	7,840.73
Convention expense (Schedule D)	11,359.33
Books and fillers, cost and postage costs (Schedule #E)	5,237.50
Total expenses	39,587.62

NET INCREASE TO FUND FOR YEAR 994.97

See Accountant's compilation report

HEART OF AMERICA CARNIVAL GLASS ASSN., Inc.

SCHEDULES * YEAR 1981-82

NOTES:

Schedule A: Convention Income:

Longest tickets - net	\$3,806.50
Chuckwagon tickets	384.00
Breakfast tickets	12.50
Sale of Whiskies	4,650.00
Total	<u>\$8,853.00</u>

NOTES:

Schedule B - Club expenses:

Meeting expenses	\$ 143.33
Bulletin expenses	12,270.57
President's expense	124.31
Secretary's expense	641.05
Treasurer's expense	275.74
Legal fees for 1980-81 paid 81-82	170.00
Accounting fees - CPA- tax return for 1980-81	235.00
Advertising	542.44
Taxes paid - Ho. Corp. Franchise	1.30
Postage	738.20
Scrapbook	19.52
Total club expense-operatingal	<u>\$15,150.06</u>

Schedule C - Souvenir Expenses:

Cost of 1502 Souvenirs	\$6,076.00
Freight in	393.94
Reimbursed by UP for breakage	(85.75)
Mould change	466.36
Telephone calls	43.13
Ads for buyer - 1981 Souv.	\$ 260.15
1982 "	300.00
Travel to Fenton Glass Co. by Souvenir Chairman	386.90
Total souvenir expense	<u>\$ 7,840.73</u>

Schedule D - Convention expenses:

Table favors, decorations, mugs:	
1981 Mugs	\$373.81
Mold change - 1982	170.10
1982 Mugs & shipping	283.38
Mugs sold and postage recd.	(821.50)
Nuts & Mints, etc.	89.77
	\$ 795.56
Music & entertainment	
Scrolling musicians	\$ 80.00
Orchestra	250.00
Eastern Onion	45.00
	475.00
Prizes and Awards	756.74
Food, Beverages & Hotel charges	7,106.19
Speaker's fee and expenses	525.34
Supplies & Programs	352.98
Drayage	30.00
Advertising	218.75

continued

HEART OF AMERICA CARNIVAL GLASS ASSN. INC.

SCHEDULES * YEAR 1981-82

Schedule D - continued - Convention expenses

Photos	\$ 65.00
Cost of Whiskies	980.00
Telephone	53.77
Total convention expenses	<u>\$11,359.33</u>

Schedule E - Costs of Books and fillers:

Fillers and postage	\$ 393.50
Book fillers - 1982	4,844.00
Total	<u>\$ 5,237.50</u>

EDUCATIONAL TUMBLER SERIES
by JOHN & LUCILE BRITT



AZTEC TUMBLER BY MCKEE

"Aztec" is an old pressed glass pattern that was made by the McKee Glass Company. Only a very few pieces of this pattern are known to exist with iridescence. I know of only three tumblers, a water pitcher, rose bowl and a sugar and creamer. There are no doubt other pieces around, but I have not heard of them. The "Aztec" pieces that I have seen have the "Pres Out" trademark pressed into the inside of the base. The tumblers are of standard size, standing 3 7/8 inches high. The base glass is clear with a subtle but unmistakable iridescent coating of an amberish marigold color. The "Aztec" pattern is quite appealing and contains three large swirling hobstars placed around the tumbler. These swirls are separated by diamond shaped figures of a button and cane design. Another swirling hobstar is pressed into the bottom side of it's ground base.

The "Aztec" pattern is described by Mrs. Hartung in her book No. 6 page 32. It is tumbler No. 209 in Richard Owens tumbler book. Mr. Owens rates it in his top 40 list of tumblers. The tumbler shown here is the exact tumbler shown in Owens book. The "Aztec" tumbler is indeed rare. Probably many of you have never seen one in carnival glass. Another seldom seen

carnival glass tumbler that was made by the McKee Comapny is known as "Heart Band". It will be covered in full detail in one of our future tumbler articles.

We are going to include in this article a sketch of the "Aztec" pattern from Mrs. Hartung's carnival glass book No. 6. Perhaps this sketch might show the pattern more clearly than that of our tumbler snapshot. We also will include a snapshot of the very rare "Aztec" water pitcher through the courtesy of Don Moore, who is the owner of this fine piece. We wish to thank these two prominent carnival glass authors for their courtesies.

This is article No. 57 in our carnival glass tumbler series. Next month we will discuss tumblers from one of Northwood's truly great patterns-----the "Oriental Poppy". We will also include pictures and data on the distinctly different "Oriental Poppy Variient" tumbler.

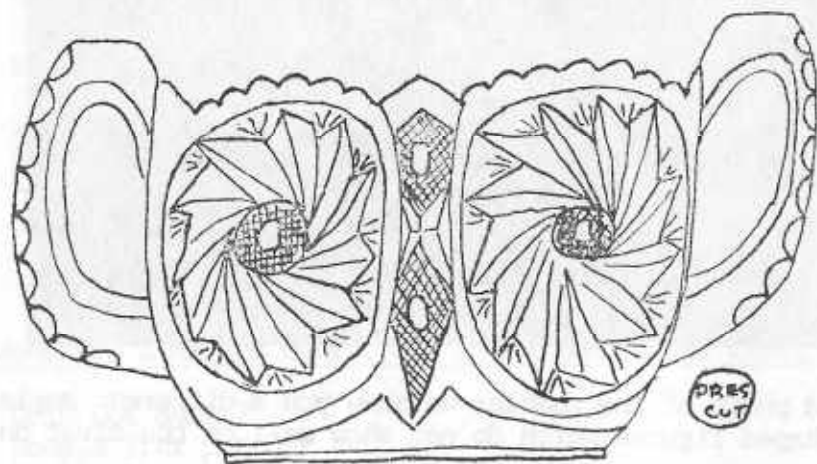


In this second photo of the tumbler we show you a different angle to show the diamond shaped figures which do not show well on the first photo.



Marigold, AZTEC water pitcher

AZTEC



SUGAR

RARE SINGING BIRDS SHERBERT

Even though highly desirable and very collectable, the well known "Singing Birds" pattern is one of the more commonly seen Northwood creations. In Carnival glass, this very popular pattern can be found in water sets, table sets, berry sets and mugs. The "Singing Birds" sherbert or ice cream shown above however, is the first example of this piece that we have ever seen. It is in deep marigold and is of the same size as the Northwood Grape & Cable footed ice cream. Like the Grape & Cable footed ice cream, this piece also contains the Underlined "N" in a circle" in the bottom of the bowl. It is not unlike the standard "Singing Birds" berry dish, except that this one has the dome foot. To my knowledge, this sherbert has never been listed in any of the carnival glass books. We did notice however, that one of these little pieces is shown in custard glass, with the distinctive Northwood nutmeg staining, in William Heacock's book No. 4, "Custard Glass from A to Z". Two of these little carnival glass sherberts were found by Dick and Emma Tilton of Gnadenhutten, Ohio.

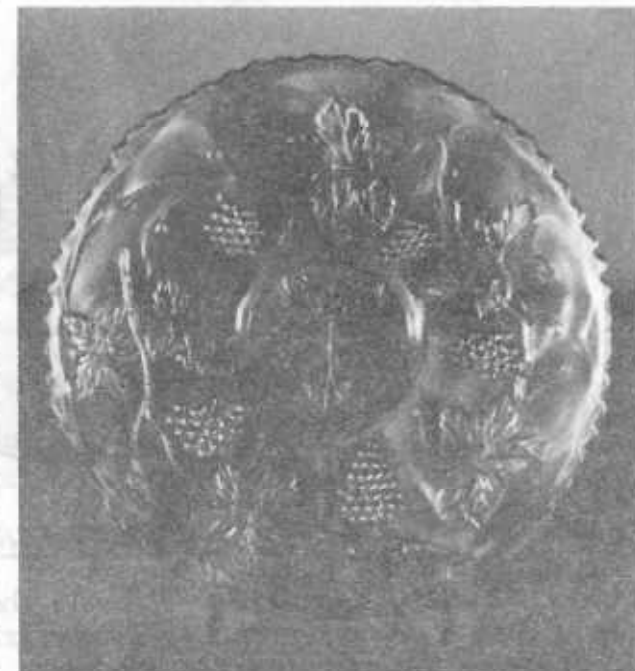
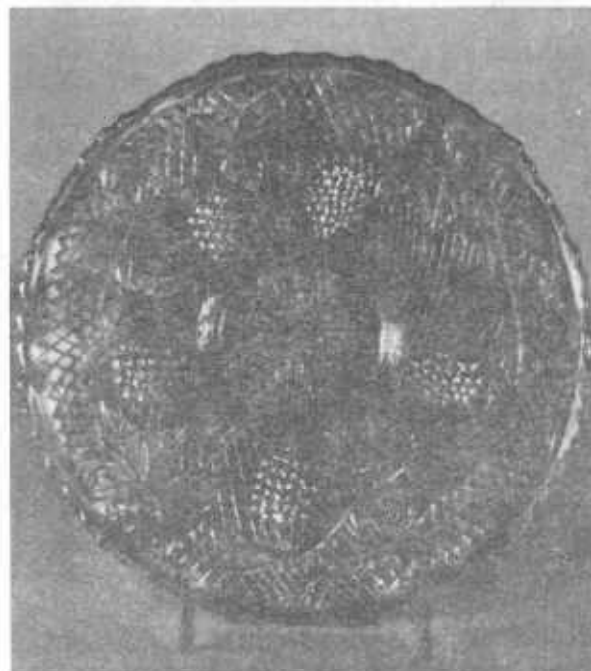


VERY PRETTY ROSE GARDEN ROSE BOWL

For some reason, we have always liked the "Rose Garden" pattern and this little rose bowl is a beauty. We have also seen "Rose Garden" in a rather small water pitcher, butter dish and in a vase. The pattern is well discussed in Hartung book 6 page 27. A nice picture of the butterdish is shown in the table set filler division of the H.O.A.C.G.A. notebook. This rose bowl is in deep marigold and with outstanding iridescence. A few pieces of this pattern has also been found in cobalt blue. Our featured rose bowl is 2 3/4 inches high, 4 1/2 inches at the top and with a base diameter of 2 1/2 inches. Mrs. Presznick, in her book 4, called this pattern "Rose Marie" and it is sometimes known by that name. "Rose Garden" is known to be an English pattern. Mr. Raymond Notley is doing considerable research on English carnival and he will bring you much more on the "Rose Garden" pattern in one of his fine articles on English carnival glass. Since this is the first rose bowl we have seen in this pattern, we thought perhaps you would like to see an example of this pattern in that shape.

Carnival Cameos

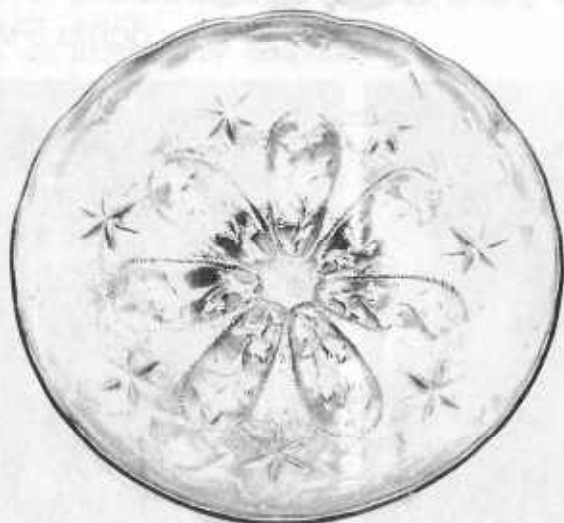
BY DONALD MOORE



CONCORD AND VINTAGE 9" PLATES (FENTON)

The Concord plate on the left carries a netting effect over the entire surface and makes this pattern quite distinctive. This is a seldom seen pattern and is considered rare in a plate. It is found in marigold, amethyst, blue and green. It will sell in the \$400-450 range.

The Vintage plate on the right is largely unknown in this 9" size, with only one marigold and two purple known to date. The 7" size is quite readily found. It is interesting to note that the Vintage is identical to the Concord except for the netting effect, which is missing. While more rare, it is doubtful if it will sell for quite as much as the Concord.



LITTLE STARS

Found primarily in ruffled, 7" bowls the Little Stars pattern is one of the early designs by the company, mainly iridized with a satin finish. Colors in order of availability are amethyst, green and marigold, but I suspect blue is a definite possibility as a vaseline.

The design is a simple one consisting of a seven leaf pinwheel, filled with a stem, leaves and blossom each. Centered above and between these leaves are stippled areas, each containing a six sided stylized star exactly like that found on the Night Stars bon bon. Between each of these stippled areas and near the bowls rim is a ragged robin blossom.

The exterior carries the usual Wide Panel design and a many rayed, flat base.

Little Stars bowls are found in three sizes including a 9 1/4" size and a 10 1/4" size and can be found in an ice cream shape as well as a ruffled one.

For example shown is a very rare 7 5/8" plate in green. And while I am certain a plate was never intended as a production shape by the factory, this example was probably a low bowl that got flattened. The coloring is

a very bright soft green and has none of the depth of the usual emerald green Millersburg made. And the few marigold examples I have seen are quite soft and mellow in color, often with a slight tint of vaseline to the coloring but not the glass.

Production runs on the Little Stars pattern must have been small, for few show up for sale. However, it is a pretty, geometrically sound pattern and one every Millersburg fan should have.

WELCOME NEW MEMBERS

- Wiley Vaughan, Rydal, Ga
- Rick Southard, Orange, Tx
- Marvin Kessler, West Orange, N J
- M/M Bob Huskins, Halifax, Nova Scotia
- M/M Dale Reid, Goldthwaite, Tx
- Forrest McGuire, Greenfield, Mo
- M/M Jack Vallance, Lesage, Wi

MOONPRINT

Sowerby Pattern Number 2481
Sowerby Pattern Name "Oxford"
Named By Mrs. Hartung Vol.8, P.93



This is a pattern that is full of surprises. It was introduced in the late 1920's and was iridised at the same time. It is a design that lacks inspiration which is not surprising as it was copied quite openly from Imperial "Oval & Round". (Future articles will cover the other patterns stolen by Sowerby from the Imperial catalogue including the use, by Sowerby of an Imperial pattern that the latter company never made in Carnival). The moulds for the Moonprint items were all made by William Cowan who started work in Sowerby's in 1874. He was born in 1854 so with Moonprint we have an extraordinary link with the past. "Old Bill" was still working regularly for Sowerby in 1936 at the age of 82 in his 62nd year of employment with them. The names of very few mould makers are known and I am delighted to be able to tell you of this wonderful old man. His exact date of decease is not yet known. He was also responsible for several other moulds used for Carnival, More details later.

"Moonprint" was thought by the Sowerby management to be "modern" and very "Yankee Jazzy". These are not my words but from a trade Journal of the period which urged English manufacturers to "overcome their nausea" and

produce "slick snazzy jazzy Yankee looking glass if that is what the public wants." So Sowerby produced "Moonprint" which to me, looks as American as our Royal Family would if decked out in baseball outfits. Imported glass was devastating the British glass industry 50 years ago and Sowerby were simply attempting to copy the type of glass that was out-selling them. Moonprint has turned up in the following shapes all in Sunglow marigold only.

Bowls, Biscuit Barrel (Cookie Jar), Cheese Stand (really a muffin dish), Covered Butter, Stemmed Sugar & Creamer, Vase, Candlesticks, Pitcher, 14 inch plate and Cake Stand.

Some of these items are very rare indeed but not really very desirable. The stemmed sugar is often referred to as a compote. The item commonly listed as a Cheese Stand is a Muffin Dish but of course could also be used for cheese. The two piece items such as the Cookie Jar, "Cheese Stand", and covered butter are very difficult to find, even in crystal. The 14 inch dish mould was used for a large and rather clumsy crimped bowl but also exists as a flat plate/tray. We owned this at one stage and believe it was resold to a shipper who put it into a USA bound container. There is a boat shape as well which I think is a whimsey shaped from one of the bowls. A water set was made in crystal in this pattern but only the pitcher seems to have been iridised. This was shown in last months Bulletin and I hope anyone with marigold tumblers will let Robert Grisson know. The Candlesticks shown in my picture (with the sugar) are as far as I know, the only recorded pair. By 1938 all items in this pattern had been phased out. The Carnival items were all produced around 1928 with unsold stocks stacked away, as usual with Sowerby, for many years afterwards. Do keep your eyes open in flea markets for unusual items in this pattern. They will never be valuable but they will be rare and interesting conversation pieces. The man who cut the moulds was born in the year of the Charge of the Light Brigade during the Crimean War. Of more interest is the fact that 1854 was the year of the Kansas-Nebraska Act, signed by President Pierce which opened up the Heart of America to white settlers. An interesting coincidence?

H.O.A.C.G.A. NOTEBOOK AMENDMENT

TABLE SETS No. 28... replace manufacturer unknown with "Made by Sowerby's Ellison Glass Works, Gateshead, Co. Durham, England. Also add, "Creamer & Sugar now known. Both stemmed."

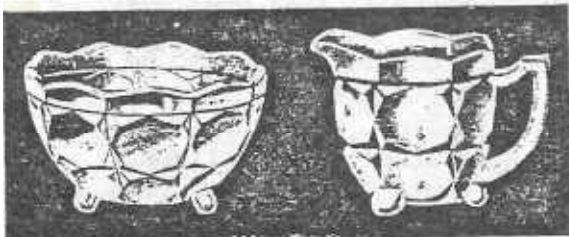
(Author's copyright reserved 1982)

Ray Notley
ENGLAND

"MOON PRINT"

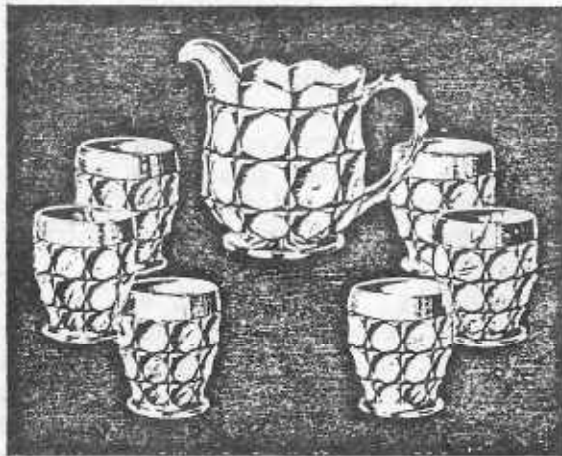
This water set of course we have called "Moon Print" and it appeared in a catalog dated 1936. Mr. Notley has so kindly sent us an article on the Moon Print pattern well researched. Also you can see it was listed with other pieces made in the same pattern. They were listed under OXFORD SUITE in the catalog. I hope you have enjoyed looking at these reprints and we will be featuring more in other issues of the Bulletin. Again THANKS Ray for sharing this information with us.

OXFORD SUITE



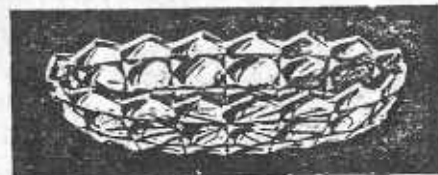
SUGAR. 4 $\frac{1}{2}$ " dia.
Flanged and Straight.

CREAM. 3 $\frac{1}{2}$ " high.

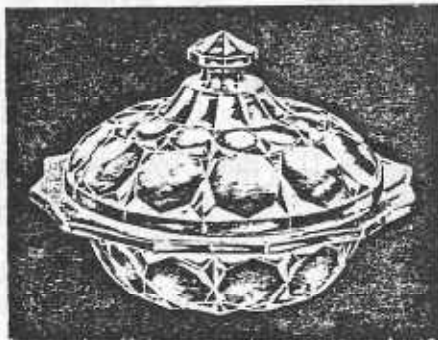


WATER SET.

One 1 $\frac{1}{2}$ -pint Jug and six $\frac{1}{2}$ -pint Tumblers.
Made in Flint, Blue, Amber,
Green and Rosalin.



BANANA SPLIT. 7 $\frac{1}{2}$ " long.



BUTTER. 6 $\frac{1}{2}$ " dia.



CREAM BOWL. 3 $\frac{1}{2}$ " high.

I was very pleased to see there was a change of mind on the 83 souvenir. It seemed we were copying IOGA with the Frolicking Bears even tho it would have been different in shape. I was very pleased with the decision of the loving cup in custard with a marigold irid. I feel it will be great and I appreciate it.

George Bond
Florida

Certainly do enjoy the bulletin since receiving it as we are rather new members in the club. Always sorry to read of conventions which I can not attend due to my husbands work and me being involved with helping to care for my mother. Know it is a good time and informative, too. Well, maybe someday.....

Have collected lots of glass over the past, but carnival is my true love. Many around here jeer at me, but no matter, what do they know? I am hooked forever I am sure.

Mrs. Elmer Craft
Bllomington, Ill

MILLERSBURG COLLECTION

Millersburg collection of Marian Hill of Florida. If anyone did not get the list too call Alice Wilson-813-248-6735 or write M. E. Hill, Box 353 Brandon, Florida 33511. The collection will be at the "Air Capital Carnival Glass Club Mini convention held October 14-17. There will be 70 items many one of a kind.

AUCTIONEERS TAKE NOTE

Any auctioneer that would be interested in bringing a good collection of carnival glass to the convention auction in April 1983 and handling the auction please contact Mr. George McGrew Jr., 6800 Woodward, Overland Park, Kansas 66204 PH 913-262-8822.

WOODY AUCTION

Following are some of the prices received at the Woody Auction of the Roebuck auction held in St. Louis, Mo on September 3 & 4th, 1982. John and Lucile Britt were kind enough to obtain these prices and send them to me for publication in the bulletin. We thank them for doing this.

Soda Gold cuspidor M 50	Fishermans mug PO 1050
Daisy & Plume nutbowl G 38	Fishermans mug M 200
Holly bowl 9" R 300	Herron mug P 260
Plaid bowl R 700	Beaded Shell mug W 1100
Tow Flowers bowl R 900	Orange Tree mug R 300
Basketweave open edge basket R 175	Orange Tree mug AO 700
Acorn Bowl R 425	N Dandelion mug IB 500
Vintage bowl R 650	N Dandelion mug M 250
Cherry Wreath bon bon R 1300	N Dandelion mug B 250
Jewelled Heart water pitcher M 550	N Dandelion mug AO 450
Frolicking Bears water pitcher G 3000	Goddess of Harvest B 3100
Perfection pitcher 2000 A	Farmyard bowl P candy ribbon P 2150
Perfection tumbler A 350	N G/C candle lamp M 550
Perfection pitcher M 2700	Morning Gloom tankard pitcher 6000
Quill pitcher M 175	Northwood Hobnail town pump P 125
Quill tumbler M 300	Kittens cup & saucer M 150
Quill pitcher P 800	Little Bo Peep mug M 150
Quill tumbler P 400	Raspberry tumbler IB 100
Harvest Flower tankard M 1600	Maple Leaf tumbler P 30
Harvest Flower tumbler M 90	Peacock at Fountain tumbler B 50
Circle Scroll pitcher M 1100	Diamond Lace tumbler 50
Circle Scroll tumbler M 350	Robin tumbler M 40
Chateline tumbler P 375	Stork & Rushes tumbler B 40
Wishbone tumbler M 140	N G/C tumbler P 35
Wisteria tumbler W 250	Tiger Lily tumbler G 40
Hobnail pitcher & tumbler M 1550 & 1250	Fishermans mug P 60
Peacock at Fountain tumbler G 400	God & Home tumbler B 110
Checkerboard tumbler P 225	Lily of the Valley tumbler B 220
Kittens cuspidor M 5500	N Oriental Poppy tumbler P 30
Feathered Serpent cuspidor G 4500	Strawberry Scroll tumbler B 175
Waterlily & Cattail cuspidor M 800	Crabclaw tumbler M 50
Cosmos & Cane cuspidor CLM 700	Grape Arbor tumbler P 50
Cosmos & Cane cuspidor W 750	
Millersburg Inverted Strawberry cuspidor G 500	
Millersburg Inverted Strawberry cuspidor M 400	
N Singing Birds mug IB 700	
N Singing Birds mug AO 1150	N Grape Arbor tumbler W 50

SEPTEMBER DAYS

We were so sorry not to get to St. Louis for Woody's sale of Mr. Sam Roebucks Carnival. Knowing it would be just great to look at even if we could not buy a thing. We surely thought about it enough and have hoped someone would send a list for the newsletter.

Labor day week end Dick & Emma Tilton came-bringing the ACCA "Fishes" mould to be taken to Wheeling for Weishars re-engraving-getting it ready for next years souvenir. This years one has sold above expectations and the committee has agreed to make it in a lovely shade of deep green with a pretty gold iridescence as was shown on a sample made with the 82 souvenirs.

We met Elwood and Marlene Funk, Chris and Ethel Harnish at Fenton Glass Company, September 13 to finalize plans on the 83 souvenir. Thats a long trip for Funks and Harnishes but they started at 4 AM to get there about 11 AM and were also returning home as the Funks own a thriving business that needs their attention full time. Mr. Funk is our new Vice President for AOGA. They did go to St. Louis auction but our time so limited while together we heard very little, except that prices seemed to be quite good.

We were rushing too as word had come in at last minute that Byron's mother had passed away. No way to get word to Fentons, Funks or Harnishes so we had to go ahead on the appointment. Mom Rinehart was nearly 94 years old. Somehow she fell from her bed breaking a hip. We had gone to Canton, Ohio to see her on Wed the 8th and she was doing so well-surgery scheduled for Thursday-she came through it fine-all seemed just great, considering age etc. We were close with telephone calls. All at once she became critical so passed away to our shock. So we gave her up and feel a terrible loss. She was wonderful.

Now we must look ahead. We hope to go to Millersburg Festival held every year in October. It is such a lovely little town with Amish people all around. We go every year. We visit relatives who live near by at Canton, Ashland and Cleveland.

Already it feels like Fall-to early it seems as the whole summer has gone so fast. By Millersburg days it will likely be white with frost as we have experienced many times there. The trees are always dressed in their lovely fall colors and everywhere one looks is like a huge painting that would get top prize every year. Fall is such a beautiful time of year-if one can forget how close the winter snows are.

Grace & Byron Rinehart
Charleston, W. V.

TAMPA BAY CLUB

The Tampa Bay Carnival Glass Club started the fall season with a meeting held at the home of Naomi Calkin in Clearwater, Sunday, September 19. Following a buffet luncheon the club got down to serious business following summer recess. President Art Smith presided. Following Secretary Conyer's report and Treasurer Calkins report new business was the order of the day. Naomi Calkin presented a draft of a constitution and by-laws which was read, debated and a final draft was adopted by the membership.

Plans for the Second Lose Your Heart To Carnival Glass Jamboree were discussed. The date has been set for February 11 and 12, 1983 and will be held in Lakeland at the Huntly Inn formerly the Hilton). The display area has been doubled. The Huntly has offered a special rate of \$34. single and \$38 double, children with parents are free. This is an excellent time to plan a trip to Florida in the height of the season at lowest rates available. Lakeland is in the center of the many Florida attractions. A banquet will be held Saturday and a special bargain rate is promised for this event. Eight foot tables, covered and skirted, are available from the Tampa Club for carnival glass sales for \$15. Reservations can be made by contacting Art Smith, 4535 Holder Ct., Lakeland, Fl 33803. Tables will be reserved on a first come first serve basis. Last Jamboree drew several hundred visitors and this year more publicity and promotion will be used. The next meeting will be with Dorothy and Art Smith in Lakeland, Sunday October 17. Anyone in Florida or visiting can call Art at 813-644-4058 for information on how to reach the meeting.

Arthur Smith
Florida

AIR CAPITAL CARNIVAL GLASS CLUB

Time is growing short until the first Air Capital Carnival Glass Club has their Mini convention. Interest has grown beyond all expectations and we are hoping everyone who plans to come will enjoy their stay here in the Air Capital City. At present we are expecting over 100 people for the banquet. We have a good auction for you furnished by Tom. Burns, Bath New York. The collection consists of glass from the Bill Edwards collection as well as two other collectors. Also you have probably all received the brochure from Mrs. Hill, of Florida who will have over 70 pieces of choice Millersburg pieces for sale out of her room. We welcome anyone to attend our convention and think you will have a super time here.

Donald E. Kime, Secretary

FOR SALE

John Gibney, 3423 1st Ave SW, Cedar Rapids, Ia 52405 PH 319-396-7900

M	EI	Hyacinth lamp	2000
R	EI	Acorn bowl	400
G	EI	Orange Tree hatpin holder	400
A	EI	G/C master punch/8 cups	1200
A	EI	Acorn Burr punch/9 cups	800
A	GI	G/C cracker jar	250
M	EI	Brooklyn Bridge bowl	250

Don Chamberlain, Box 64, Winthrop, Ia 50682 PH 319-935-3925

M	GI	Varnival Holly hat mold roughness on base	10
AM	EI	Imperial Grape berry bowl 2 ea	15
B	EI	Butterfly & Berry tumblers 3 ea	35
B	GI	Vintage with sm berries berry bowl	20
M	EI	Smooth Rays water pitcher	35
M	EI	Smooth Rays berry set 7 pc	18
M	EI	Smooth Rays sherbets 2 ea	3
M	EI	Ptex insulators 10" 6 ea	13
B	EI	Grape & Gothic Arches N	26

Bernie Mahn, 1001 Rock Rd, Desota, Mo 63020 PH 314-586-6226

A	EI	G/C (N) covered butter dish	235
G	EI	Vintage 7" plate rare	110
A	EI	Lustre Flute creamer (N)	55
P	EI	G/C (N) stemmed ice cream	65
A	EI	G/C (N) saucer sm collar base chip rare	175
A	EI	G/C (N) 9" flat plate	95
A	EI	Fenton G/C 3 ftd plate	85
M	EI	Acorn Burr (N) 6 pc berry set	230
M	EI	Stippled Rays 8" bowl	35
M	EI	Good Luck bowl	90

Pat Call, 34 Lovell Rd, Stratham, N H 03885 PH 603-778-0660

M EI	Vineyard water pitcher	95
P EI	Zippered Heart sauce	25
M EI	Northwood's sm Blackberry compote	30
M GI	N Flute butter bottom	15
M EI	Peacock & Urn sundae comptes 2 Fenton pr	50
M GI	Vintage wine	16
P EI	Singing Birds tumbler lg base chip	3.50
P EI	Sprintime covered sugar base chips lid rough	20
M EI	G/C pin tray tiny nick at outer point	65
P EI	Holly Sprig ruffled nappy	49

Barbara Farmer, RD 5 Box 462, Wheeling, W V 26003 PH 304-336-7689

G EI	Singing Bird water set 7 pc heat check pitcher spout	275
M EI	Swirl Hobnail rose bowl sm heat check in bottom	120
AMB EI	G/C banana bowl acid stains inside	100

Valmer Cross Sr, Johnson Hollow Dr, Prattsville, N Y 12468 PH 607-588-6698

DM EI	Vintage Banded Grape mug	40
DM EI	Brooklyn Bridge bowl	250
M EI	Orange Tree mug	28
G EI	Millersburg Blackberry Wreath lg bowl	48
G EI	Millersburg Blackberry Wreath sm bowl	24
LM EI	Blossoms & Spears plate 8"	25
LM EI	Dutch Mill plate 8"	20
M	Golden Flowers vase	35
P EI	G/C spooner chip on base (N)	50
PO EI	Ski Star bowl lg 10'11"	75

Burney Talley, 1814 Slate N W, Albuquerque, N M 87104 PH 505-242-1261 Eve

G EI	Imperial Grape bowl 8"	45
P EI	Australian Swan 9" bowl	125
P EI	KingFisher bowl 9"	125
M EI	Handled May basket	50

M EI	Imperial Flute mug bubbles in glass	20
Clam LI	Ice crystal master salt 5" diam rolled rim	45
M EI	Pansy dresser tray	45
G EI	Pansy bowl 8"	45
M EI	Sailboats compote	45
M EI	Crackle covered candy jar	15

Edward Henderson, 1111 N College, Stuttgart, Ar 72160 PH 501-673-8757

M EI	Diamond jelly compote chip on rim	10
M EI	Rib jelly compote	13
M EI	Star & File jelly compote	60
M EI	Daisy & Fern nappy	20
M EI	G/C two handled nappy	40
A EI	Crackle finish 9 1/2 plate	40
M EI	Imperial Grape 9" plate sm chip	20
M EI	Fashion Imperial punch bowl base	45
A EI	Persian Medallion relish sauce 4 ea	20
M EI	Northern Star relish dish	20

Norene Campbell, Box 107, Ocate, N M 87734 PH 505-666-2237

LM GI	Washbasin & pitcher wash basin flared out rim	475
B EI	Cherries & Blossoms enameled tumbler (N)	40
B EI	Cherries & Blossoms tumblers 5 ea 12.50 all 5	50
DM EI	Stag & Holly 8" ftd ice cream shape bowl	55
M EI	Three Fruits plate	50
DS EI	Open Rose 8" bowl	55
G GI	Acorn bowl	25
P EI	Acorn Burrs punch cup	28
B GI	Peacock at Fountain pitcher	265

Judith Miller, 292 Carroll Close, Tarrytown, N Y 10591 PH 914-631-5092

P GI	G/C punch bowl base (N)	25
------	-------------------------	----

Leo Arenstein, 6 Walnut Ave, Wyoming, Oh 45215 PH 513-761-6093

A EI Oriental Poppy tumbler	50
A EI Heavy Iris tumbler	65
W EI Acorn Burr punch cup	60
IB GI Peacock Fountain punch cup	65
A EI Beaded Shell tumbler	65
B EI Dandelion mug	325
AO EI 3 Frutis compote chip	125
B EI Orange Tree Orchard tumbler	60
G EI Raspberry tumbler rim flake	50
M EI Fieldflower tumbler	35

John Stewart, 99 Aster Circle, Weymouth, Ma 02188 PH 617-337-1304

A EI Flute #1 tumbler	60
P EI Heavy Iris tumbler	65
M EI Milady tumbler	55
M EI Fentonia tumbler	40
PM EI Grape Arbor tumbler	50
M EI Grape & Gothic Arches tumbler	30

Omer Sweeney, 28 Esmond St, Esmond, R I 02917 PH 401-231-4108

M EI G/C candle lamp N	625
M EI G/C perfume bottle N	375
M EI G/C hat pin holder N	140
M EI G/C dresser tray	140
M EI Hanging Cherry table set	375
B EI G/C banana boat	185
B EI Butterfly & Berry vase	55
P EI Swirl Hobnail rose bowl	210
P EI Little Stars 8" bowl	80
P EI Feathered Serpent 10" bowl	55

Dolores Versprille, 200 Dake Ave, Rochester, N Y 14617 PH 716-544-4688

G Millersburg Cosmos sm 6" bowl	42
IG EI Brocaded Palms stemmed compote	50
M EI Hobstar Band stemmed compote rare	65
M EI Fenton sm Holly compote ruffled edge	24
PM EI Frosted Block sugar & Creamer	40
M EI Wreath of Roses rose bowl	30
M EI DeVilbess perfume complete	32
PM EI Canoe	60
M EI Rococo vase	45

Jos Mello, 535 Fish Rd, Tiverton, R I 02878 PH 401-624-2174

M EI Peacock at Fountain creamer cracked	25
A EI G/C 6 pc water set pitcher has nick one thumbprint	325
M EI Fashion tumbler	20
M EI Floral & Grape tumbler	18
M EI G/C punch cups stippled 3 ea	15
B EI Fenton open Lattice baskets 3 ea	25
A EI Star of David bowl (N)	50
A EI Imperial Stippled Rays lg bowl	35
B EI Basket (N) flake	60

Paul Jankauer, 5 Court of Overlook Bluff, Northbrook, Ill 60062 PH 312-478-0800 days mon thru fri, 312-272-4440 eve and week ends

P EI Dragon & Lotus spatula ftd bowl	55
G EI G/C candlesticks slt bruise in base of one	145
PO EI Estate miniature creamer	55
AO EI Three Fruits spatula ftd opal to bottom	335
P EI Flute punch cup	40
G EI Millersburg sm cosmos bowl	50
P EI Peacock at Fountain tumbler have 4 ea	33
G EI G/C waterset two tumblers have base chips	395
R EI Colonial open sugar stretch	135
IB EI Concave Diamond tumblers have 2 ea	30

Armida Smith, 237A Little River Rd, Berwick, Me 03901 PH 207-698-1281

M EI	Cut Flowers vase	125
G EI	Trout & Fly ice cream bowl	325
G EI	Wreath of Roses bunch bowl sides up 2 sm nicks on int bottom	275
A EI	Grape Delight rosebowl	65
W EI	Rustic vases 7" tall shown in June issue whimsys	150
G EI	Sunflower pin tray chips	135
A EI	Millersburg Cherry bowl 7 1/4 rim roughness	30
LM	Open Edge Hattie-adv piece John H Brank furniture co Wilmington, Del	45
M EI	Raspberry milk pitcher (N)	65
	Estate perfumes (pair) color & description in Prezicks book 4 pg 61	275

Delouris Craft, 702 Bradley Dr, Bloomington, Ill 61701 PH 309-662-3610

P EI	Scroll Embossed 9 1/4 plate minor scratches	86
B EI	Vintage Little fernery sm ruf feet sm nick under mould line	72
M EI	Triplets dish rim flares out approx 7 1/4 "	32
PO GI	Ski Star 10 1/2 round rulled dish	76
PO EI	Single Flower 8 1/4 dish minor scratch	42
A EI	Beauty bud vase shallow nick	38
M EI	Cherries 9 1/2 ftd dish rough feet	44
P EI	Wishbon & Spades dish sauce	35
R EI	Hexagon shape candlesticks some amberina nicks on base comers pr	240
P GI	G/C large open compote some int wear	360

Jerry Jenkins, % Hughes Equip, Box X, Salisbury, Md 21801 PH 301-749-1876

R EI	Coin Dot bowl 7"	450
G EI	Double Star pitcher	300
G EI	Double Star tumblers 2 ea	40
A EI	G/C candlestick	65
A EI	Raspberry pitcher	200
A EI	Ten Mms pie crust edge bowl	95
A EI	Singing Birds butter dish	210
B EI	Orange Tree hat pin holder	155

A EI G/C sweetmeat

185

Singleton Bailey, Box 95, Loris, S C 29569 PH 803-756-7495

G EI	Grape Wreath variant 8" bowl radium	45
P EI	Singing Birds mug	65
Teal EI	Leaf Swirl compote	65
A EI	Many Stars 9 1/2 bowl radium	175
G EI	Whirling Leaves 9 1/2 bowl	65
G EI	Blackberry Wreath 10 1/2 crimped bowl radium	65
B EI	Peacock at Fountain orange bowl	225
Clm EI	Imperial Grape 9" bowl	25
B EI	Three Fruits stippled plate	110
B	Orange Tree plate	118

Barbara Nelson, Rt 4 Box 155, Laconia, N H 03246 PH 603-293-7246

LM GI	Ship & Stars 9" plate	15
P EI	S-Repeat punch cups 4 ea	32
G EI	Panneled Holly compote N	55
B EI	Orange Tree sugar no cover	40
S EI	Diamond Ring Fruit bowl 9 1/4	40
CLM EI	Diamond Lace berry bowl unlisted color	75
B GI	Drapery vase unusual shape N	40
LV EI	Louisa rosebowl unlisted color	75
PO EI	Caroline bowl 3 sides up 8"	95

J. Blackburn, 408 Military Dr, Coeur d' Alene, Id 83814 PH 208-667-2908

B EI	Illusion 2 handled bon bon	54
M EI	Peacock & Urn round bowl	56
G EI	Beads (N) bowl	40
M EI	G/C 2 handled bon bon	30
W EI	Grape Lattice 7" plate	50
M EI	Poinsettia milk pitcher	48
G EI	Wild Rose ftd open heart edge (N) bowl	40
PO EI	Single Flower fluted bowl	35
M EI	Vintage 3 ftd nut bowl	28
G EI	Greek Key dome ftd bowl	60

Wesley Strain, 832 Carson Rd, Ferguson, Mo 63135 PH 314-524-5608

M EI	Broken Arches punch bowl & base	250
M EI	Memphis sauces scarce 2 ea	25
B	Orange Tree spooner, creamer, covered sugar damage	125
M EI	Kittens cup & saucer 2 kittens	250
P EI	Ruffled advertising bowl Central Shoe Store	125
M GI	Blocked Panel tumbler rare	75
PM EI	Millersburg Whirling Leaves radium bowl	55
A EI	Marilyn tumbler	100
M EI	Banana Boat or card tray	90
AMB EI	Dragon and Lotus bowl ice cream shape	350

Charlene Cotton, 602 E 4th St, Weatherford, Tx 76086 PH 817-594-7767

R EI	Blackberry Spray hat bowl	300
A EI	Wishbone ftd plate (N) rare	250
G	G/C ftd bowl dark emerald green	70
B EI	Holly 9" candy ribbon edge bowl	68
G EI	Heart & Vine 9" bowl	65
A EI	Thistle 8 1/2 candy ribbon edge	65
G EI	Wishbone ftd 8" bowl	75
G EI	Stippled Rays 9" candy ribbon edge	65
A EI	Holly candy ribbon edge	65
A EI	Stippled Rays 9" bowl	50

Gil Corriveau, Box 5, Sturbridge, Ma 01566 PH 617-347-3304 days nights
617-347-9930

AO EI	Drapery rose bowl	200
P EI	G/C hatpin holder	145
P EI	Millersburg Diamond water pitcher	160
W EI	Peacock on Fence N plate	160
P EI	S Repeat punch base	100
P EI	Acorn Burr tumblers set 6	250
M EI	Golden Harvest wine decanter	85
P EI	Louisa rose bowl	40
P EI	Floral & Grape water pitcher	140
P EI	G/C cologne bottom	75

34

Lou Knight, 4315 N Alvernon Way, Tucson, Az 85718 PH 602-299-9700 aft 6pm

DP EI	Fishermans mug	95
P EI	Tigerlily tumblers 2 ea	55
P EI	Lustre Rose tumbler	48
M EI	Little Fishes 9" ftd bowl	95
IG EI	Corn vase (N)	225
Pink EI	Brocade Daffodils sm sugar & creamer	95
M EI	Three Fruits 9" plate tiny chip (N)	49
G EI	Wreath of Roses ftd handled bon bon	45
Clambroth-opal EI	Hobstar & Fruit 6" ruffled bowl	75
W EI	Orange Tree 9 1/2" plate	125

A. A. Fogleman, 101 Cedarwood Dr, Jamestown, N C 27282 PH 919-454-3267

A EI	Trout & Fly bowl	325
Honey-Amber EI	Nesting Swan bowl rare	325
M EI	Zippered Loop lamp large	305
R EI	Sailboat bowl	325
R EI	Basketweave open edge hat	180
IG EI	Corn vase with husk on base	220
P EI	Peacock on Fence 4 pc table set	425
P EI	G/C sweetmeat compote	210
P EI	Fishermans mug	90
B EI	Singing Birds mug	75

Carl Rodgers, 33237 Cr 452, Brinkhaven, Oh 43006 PH 614-824-4106

M EI	Stag & Holly ftd ruffled 11" bowl	65
M EI	Blackberry Bramble compote	30
M EI	Honeycomb bon bon	15
LM EI	Fanciful ruffled plate	55
M EI	Vintage compote	26
M EI	Dragon & Lotus bowl	37
A EI	Carnival Thistle bowl	40
A EI	Millersburg Courthouse ruffled bowl	350
M EI	Lotus & Poinsettia bowl	45
A EI	Fenton Thistle banana boat	189

35

John Britt, 3048 Tamarak Dr, Manhattan, Ks 66502 PH 913-539-1933

M EI	Fentonia tumbler	35
M EI	Ranger tumbler "M" in the "C" trademark (scarce)	150
W EI	Heavy Iris tumbler	150
A EI	Millersburg Diamond tumbler	50
B EI	Orange Tree variant tumbler	85
M EI	Peacock at Fountain tumbler	35
A EI	Fluffy Bird Peacock tumbler	65
A EI	Panelled Dandelion tumbler	50
B EI	Ten Mms tumbler	75
W EI	Acorn Burrs punch cup	45

Ralph Blankenbecler, Rt 3 Box 46, Coeburn, Va 24230 PH 703-395-2220

M EI	Fentonia ftd butterdish	120
P EI	Flute toothpick	70
P EI	N bon bon	50
B	Welch paperweight	100
P EI	Vintage 6 ftd rose bowl flattop	80
M EI	G/C covered butterdish cracked base	60
A EI	Heavy Iris tumbler	60
B EI	Chalice Doubleloop rose bowl N 2 ea	50
M EI	Forget-Me-Not water set decorated variant	300
A EI	G/C dresser tray	195

Clifford Decker, R 1 Box 209, Whitney Point, N Y 13862

R EI	Holly compote	185
M EI	Stag & Holly giant rose bowl	110
P EI	Fishermans mug	80
PO EI	Raindrop bowl	50
PO EI	Cherries bowl	55
P EI	(N) Fruit & Flowers berry set 7 pc	200
P EI	Rosette bowl	60
B EI	Cherry Chain bowl	50
M EI	Persian Medallion plate 7"	30

Ken Young, 1451 Mariner Bvd, Spring Hill, Fl 33526 PH 904-683-4618

IG EI	Bushel basket round (N)	150
B EI	Butterfly & Fern water set	500
G EI	Good Luck 9" plate (N)	250
P EI	G/C sweetmeat (N)	200
R EI	Holly hat candy ribbon edge jack in pulpit shape	175
AO EI	Peacocks on Fence bowl	400
IG EI	Peacocks on Fence plate	200
W EI	Poppy Show bowl	170
AO EI	Rose Show bowl butterscotch irrid	400
G EI	Sunflower pin tray sm flake under collar	200

Send SASE for list

Mary Welch, 213 Alexander, Scotia, N Y 12302 PH 518-393-7748

G EI	Featherstitch blue base 8 1/4	50
PO EI	Bells & Beads 3 sided ribbon rim 6 1/2	38
PO EI	Caroline 3 sided ribbon rim 9"	52
S EI	Open Rose large ftd fruit bowl	50
DM EI	Imperial Grape wines have 3 ea	22
M EI	Inverted Strawberry powder jar bottom	20
M EI	Lustre Flute one handle nappy Souvenir-Helen Fair 1909	26
A EI	G/C tumblers have 6 ea	20

Al Rettke, 14226 East 143rd Lane, Burnsville, Mn 55337 PH 612-432-7489
after 3

W EI	Wishbone ftd bowl really outstanding frosty irrid	325
B EI	Peacocks on Fence plate super rd/gm/gld irrid	185
P EI	Tornado vase 6 1/2	125
W EI	Constellation compote frosty	65
DM EI	Robin mug	37
M EI	Orange Tree mug	19
B EI	Orange Tree shaving mug	40
G EI	Blackberry Bramble compote	45
M EI	Cherry Chain 6" plate	30

Mary Kesterson, 3020 Mesa Rd, Willow Park, Tx 76086 PH 817-4441-8410

IB EI	Grape Arbor tumbler	135
M EI	Maple Leaf creamer	45
W EI	Apple Blossom Twig plate 9"	110
AO EI	Leaf & Beads rose bowl (N)	245
M EI	Coral (Fenton) plate 9" rare	695
IG EI	N Corn vase	225
P EI	N G/C cookie jar	410
B EI	Pine Cone plate 6"	85
P EI	Nautilus (Unlettered) (N)	195
B EI	Mikado compote	275

Ruth Schinestuhl, 55 Natalie Terr, Absecon, N J 08201 PH 609-641-1814

SASE list of old carnival for sale

Mrs. Leslie Tuthill, Box 201, Lee Center, N Y 13363 PH 315-337-9118

B	Orange Tree Orchard tumblers 5 ea	40
B	Orange Tree Orchard pitcher crack near handle no chips	65
P	Tree Bark vase (N)	38
P	Acorn Burr punch base 2" heat crack in top	30
M	Kokomo rose bowl	45
M	Little Flowers 8" bowl	45
M	Little Flowers 5" bowls 6 ea	12
M	G/C sm punch base sm broken piece glued on	15
LM	Lustre Rose 6 piece water set 1 free damaged tumbler	80
PO	Dogwood Sprays large flat bowl dome base	70

Dick Wetherbee, 847 Stafford St, Rochdale, Ma 01542 PH 617-892-4420 after 6

W EI	Leaf Ray tricomer shape nappy	32
PO EI	Raindrops 9" dome ftd bowl candy ribbon edge	75
B EI	Open Rose basketweave 6" bowl 2 sides up	28
AO EI	G/C Variet punch cup (N) very rare mfg mark	245
G EI	Vintage 3 ftd fernery minor roughness grapes	18
P EI	Raspberry milk pitcher (N)	155
PO EI	Ski Star banana shape dome ftd bowl	80

38

W EI	Acorn Burrs punch cups 5 ea (N) 50 all	210
B EI	Blackberry Spray 5 1/2 hat ruffled edge	30
P EI	Triad - Tortoise Shell long stem hatpins ea 20 both	35

Robert Schneider, 10173 Marshall Pond Rd, Burke, Va 22015 PH 703-250-8807

M EI	Stag & Holly 10 1/4 ftd bowl tiny ft flake	62
W EI	Lined Lattice ftd N ftd vase	32
CM EI	Frosted Block rose bowl scarce	52
B EI	Hollies & Berries 9" bowl	33
B EI	Orange Tree mug	33
M EI	Elegant etched open creamer & sugar pattern unknown	35
A EI	Stippled Rays 8 3/4 master berry bowl RCE	25
A EI	Peacock Tail 9" master berry bowl RCE	25
M EI	Fenton advertising basket "Brand Furniture" 2 row open edge	43
M EI	Fenton advertising basket "Brand Furniture" 2 row open edge	43

Rick Kojis, 2020 South 80 St, West Allis, Wi 53219 PH 414-327-0321 aft 5

EB EI	Rose Show Variet plate	325
PO EI	File & Fan compote	75
B GI	Thistle compote	45
AO EI	Four Pillars vase N	110
R EI	Fenton G/C ruffled bowl	295
P EI	Imperial Glass Co adv paper wt cracked	85
A EI	Nesting Swan bowl sm surface flake at edge	85
IB EI	Hearts & Flowers bowl flake backside of one tooth	95
PO EI	Fishscale & Beads 7" ruffled plate lg chip on collar	15
G EI	Millersburg Blackberry Wreath 5" ruffled sauce 2 ea	35

J. Vokral, 439 Grande Cote, St. Eustache, P.Q. J7P 1H9 PH 514-473-4203

DM EI	Leaf Tiers butter	150
P EI	Beaded Shell butter	160
M EI	Beaded Shell water pitcher	300
M EI	Brooklyn Bridge bowl	275

39

M EI	G/C banana boat	150
P EI	G/C banana boat	180
IG EI	G/C banana boat	250
IB EI	G/C banana boat	250
M EI	Garland rose bowl	43
M	Apothecary jar small	40



40

Al Rettke, 14226 East 143rd Lane, Burnsville, Mn 55337 PH 612-432-7489
after 3

IB Singing Birds mug
 P Singing Birds mug stippled
 G Singing Birds mug stippled
 M Hearts & Flowers compote custard
 Unusual Peacocks on Fence bowls like blue MG, LGO

Clifford Decker, R 1 Box 209, Whitney Point, N Y 13862

A G/C N pitcher
 B Orange Tree powder jar lid
 G Raspberry tumblers need 2

John Britt, 3048 Tamarak Dr, Manhattan, Ks 66502 PH 913-539-1933

M Stopper for Imperial Grape wine decanter
 PB Peacock at The Fountain punch cup
 B Multi Fruits & Flowers punch cup
 P Stork & Rushes mug
 AO G/C punch cup
 PO Miniature Swan salt
 M Four-Seventy-Four cordial

Mary Kesterson, 3020 Mesa Rd, Willow Park, Tx 76086 PH 817-4441-8410

IG G/C centerpiece bowl ftd or any other color N
 P G/C cologne w/stopper N
 P G/C perfume w/stopper N
 PO Fanciful bowl 8 1/2
 PO Fanciful plate
 G Daisy Square rose bowl
 PO Round Up plate
 R Acom bowl
 M Iris goblet

41

WANTS

Barbara Farmer, RD 5 Box 462, Wheeling, W V 26003 PH 304-336-7689

- M Acorn Burr punch set
- M Diamond lace water set
- V N basket
- S N Basket

Judith Miller, 292 Carroll Close, Tarrytown, N Y 10591 PH 914-631-5092

- P Louisa rose bowl
- B Louisa rose bowl
- G Louisa rose bowl
- Electric Green Daisy & Plume rose bowl
- Electric Blue Daisy & Plume rose bowl
- P Diasy & Plume rose bowl
- IB Any pattern bowl
- AQ Any pattern bowl
- The Encyclopedia of Carnival Glass by Sherman Hand

A. A. Fogleman, 101 Cedarwood Dr, Jamestown, N C 27282 PH 919-454-3267

- A G/C flat saucer
- P G/C flat saucer
- A G/C Single Handle nappy
- P G/C Single Handle nappy

Mrs. Wm. McGarran, R 1, Lowell, Ark, 72745

- B Panelled Dandelion water pitcher or would sell 6 tumblers
- A Imperial tumblers & pitcher
- B G/C water pitcher
- P Bottom to powder jar

42

Mrs. George Miller, 810 Georgia, Floydada, Tx 79235

- A G/C powder jar lid
- G Imperial Grape wines helios
- G Imperial Grape tumblers helios
- M Imperial Stippled Rays cream pitcher
- M Imperial Pansy Spray sugar bowl

Barbara Rowe, Shoreham, Vt 05770 PH 802-948-2090

- B Orange Tree punch bowl base
- B Orange Tree punch cups need 6
- P G/C lid for powder jar (N)

John Stewart, 99 Aster Circle, Weymouth, Ma 02188 PH 617-337-1304

- M Inverted Feather wines
- M Four Star & File wines 4
- G Imperial Grape wines 3
- M Diamond & Sunburst wines 3
- M Flute wine & cordial
- M Flute & Cane wines
- Any Brocaded patterns wines
- M Tulip & Cane wine

Wesley Strain, 832 Carson Rd, Ferguson, Mo 63135 PH 314-524-5608

- W G/C lid for cracker jar
- A Golden Harvest decanter stopper
- P G/C covered compote lid

Singleton Bailey, Box 95, Loris, S C 29569 PH 803-756-7495

- Trout & Fly and Big Fish pieces
- Millersburg Peacock pieces
- Millersburg vaseline

43

Millersburg compotes
Want to buy collections in N C and S C

Jos Mello, 535 Fish Rd, Tiverton, R I 02878 PH 401-624-2174

M Cherry & Thumbprint base to butter dish
W Orange Tree ftd base to butterdish
P Imperial Grape cups need 4
A Wreath of Roses punch bowl base
G Fenton basket
M Butterfly & Berry tumblers need 2
DG Butterfly & Fern tumblers need 2
M Acorn Burr punch bowl top only
G Acorn Burr punch bowl top only
M Horse Med or Horses Head plate
B Horse Med or Horses Head plate

Goerge Bond, 1406 N Ferncreek Ave, Orlando, Fl 32803 PH 305-896-4764

P G/C Sweetmeat top
M Kittens flat saucer

Patricia Craver, Box 8015, Allandale, Fl 32023, Ph 904-788-5315

P Acorn Burr butter top
M G/C butter bottom
M Peacock at Fountain butter bottom
M Butterfly & Berry butter top
G G/Gothic Arches butter top
G G/Gothic Arches spooner
W Peacock at Fountain punch base
W Orange Tree punch base
