



OCTOBER MONTHLY MEETING

**Heart of America
Carnival Glass Association, INC.**

MEMBERSHIP JUNE TO JUNE
\$10.00 PER COUPLE OR SINGLE

PUBLISHED 15th OF
EACH MONTH

PRESIDENT: GEORGE O. MCGREW JR.
6300 WOODWARD
OVERLAND PARK, KANSAS 66204
913-262-8822

VICE PRESIDENT: GEORGE BOLLES
5204 CATALINA
SHAWNEE MISSION, KANSAS 66205
913-432-5438

TREASURER: ELIZABETH BOLLES
5204 CATALINA
SHAWNEE MISSION, KANSAS 66205
913-432-5438

SECRETARY:

BULLETIN SECRETARY: DONALD E. KLINE
1202 W 4th ST.
HAYSVILLE, KANSAS 67060
316-524-3123

Following a delicious dinner at the home of Barney and Nadine Paulsens, President George McGrew called the October monthly meeting to order.

The minutes of the September monthly meeting were read and amended as to the following: Davis Shikles was appointed to the finance committee instead of Viola Shikles, as the minutes read.

The Treasurers' report was given by Treasurer Elizabeth Bolles. The report stated that cash on hand as of 9-26-82 was \$14,371.71 Total receipts for the period of 9-25-82 through 10-23-82 were \$821.17. Total disbursements for the same period were \$1941.49. Leaving a balance of cash on hand as of October 23, 1982 of \$13,251.39. The report was accepted as read and placed on file.

Robert Grissom, convention chairman gave a report on the progress of the convention. The convention committee is to meet again with motel management on Wednesday the 27th of October to further discuss convention arrangements. Mr. Grissom gave us a tentative outline of the schedule of the convention. He also informed us that motel management have revealed to him, that there may be a possibility of unfinished construction during the time of our convention. Management assured Mr. Grissom that this is only a slight possibility. Discussion with members present at the monthly meeting brought about the decision to stay at the Holiday Inn. Mr. Grissom announced that he plans to have the room displays judged by three outside judges.

Lucile Britt made a motion to have the method of judging of displays to remain the same as in years' past. Judged by ballot of members present at the convention. Marge Miller seconded the motion. The motion did not carry.

President McGrew announced that member John Stewart has taken the time to index all of the educational material in the H.O.A.C.G.A. bulletins, dating back to 1973. He offers this to our club for publication if desired.

Lucile Britt made a motion we adjourn. It was seconded. Our next meeting to be November 28, 1982, at the Holiday Inn of Overland park, Kansas. Meeting to begin at 2:00 P.M..

Diana Treff, Secretary

George McGrew, President



Gold Band on Rim

Gold-Horseshoe & Whip

Gold on Cable

Gold on Rim Of Base

PLEASE MAKE CHECKS PAYABLE TO H.O.A.C.G.A. AND SEND THEM TO THE SECRETARY:

Diana Treff
13646 Leavenworth Rd.
Kansas City, Ks
66109

WILL PICK UP:

_____ 1982 Gold Gilded Ice Blue Corn Vase (s) at \$45 each.

PLEASE MAIL:

_____ 1982 Gold Gilded Ice Blue Corn Vase (s) at \$45 Please add \$3 postage for each vase.

PLEASE PRINT FULL NAME AND ADDRESS:

TABLE FAVOR MUGS

The small table favor mugs used for the convention and offered for sale to you can no longer be ordered. We are out of them. We thank you for your orders and hope you enjoy them.

FOR SALE & WANT ITEMS

Please let me remind you that you are permitted to list only 10 for sale and 10 want items in the bulletin. Also it must be old carnival glass only and the only new items are the H.O.A.C.G.A. souvenirs. Also each color represents one item. For example: P G V Frolicking Bears tumblers represent 3 items not one. It seems as tho some of our readers are only looking for mistakes and counting to make sure no one gets one extra listing or something is printed that is not carnival glass. Thank you for your help in this matter

Editor

Word has been received that both Bill Carroll and Lorene Sebaugh have gone thru major surgery and will be some time recuperating so please send them a card or note. They would certainly appreciate hearing from their carnival glass friends.

C. B. Carroll, 3918 Revere Ave., Los Angeles, Calif 90039
Lorene Sebaugh, 9116 Fort Donelson Dr., St. Louis, Mo 63123

Please get your order in for the Ice Blue Corn Vase, souvenir for 1982. Remember we have added the gold gilding around the top rim, the horseshoe and whip, another gold band on the stem and a gold ring around the outside of the base edge. Available to those members who purchased an original Ice Blue Corn Vase (1982) till October 31, 1982. On November 1, 1982 available to ANY member wishing to make the purchase.... Those members that purchased one Ice Blue Corn Vase are eligible to purchase one Gold Gilded Vase. Those who have purchased two Ice Blue Vases are eligible to purchase two Gold Gilded Vases. DO NOT BE SORRY. Thanks to the response of the members who purchased the GOLD GILDED Souvenir. To the members who have not purchased, MAIL YOUR ORDER TODAY. I know you will be proud to own this copy of the old Northwood Corn Vase. This is a limited edition.

EDUCATIONAL TUMBLER SERIES

BY JOHN & LUCILE BRITT



NORTHWOOD'S POPULAR ORIENTAL POPPY TUMBLERS

The beautiful "Oriental Poppy" is one of Northwood's most popular water sets and it is highly sought after by collectors everywhere. The tall tankard type water pitcher definitely adds to this pattern's beauty and great popularity. The wide variety of colors known to exist in the "Oriental Poppy" pattern also adds to its desirability, beauty and popularity. In addition to the vivid colors, it is also found in the pastel colors of white, pastel blue and pastel green. These pastel tumblers, tankards and water sets are highly sought after and the soft pastel colors make them even more fantastic. Marigold, purple and green are the colors most often found, but they too are very desirable and are always in great demand. I consider the cobalt blue tankards and tumblers in this pattern as rare and it would be very hard indeed to find a complete set in cobalt blue. The tumbler shown above in the center is in cobalt blue. Most of these cobalt blue tumblers, that I have seen, are a little taller than the other colored tumblers in this pattern. For some reason, most of these cobalt blue "Oriental Poppy" tumblers that I have observed do not have the "N" in the bottom, but do have the plunger type circle like that found in

the bottom of the "Grape & Gothic Arches" tumblers. All other colors in this pattern will nearly always contain the Northwood "N" in a circle. "Oriental Poppy" tumblers are smooth on the inside as opposed to the ribbing found on the inside of the "Oriental Poppy Variant".



ORIENTAL POPPY VARIANT TUMBLERS WITH INSIDE RIBBING

The "Oriental Poppy Variant" tumblers differ from the regular "Oriental Poppy" tumblers in that they have the ribbing on the inside. I believe you will be able to detect the ribbing in the photo shown above. This is the only significant difference between these two tumblers. The variant tumbler with the inside ribs, however, will be somewhat harder to find. I have seen these "Oriental Poppy Variant" tumblers in the three pastel colors as well as in the purple. The center tumbler in the above picture is the purple variant with the inside ribbing. The two outside tumblers are in pastel green and pastel blue. The pastel or ice green "Oriental Poppy Variant" tumbler is very hard to find - - much harder than the one with the smooth interior. As yet, I have not observed any of the variant type tumblers in marigold, green or cobalt blue. Perhaps they do exist but I have never seen one. These tumblers in both versions will add charm to any carnival glass collection.

by JOHN & LUCLE BRITT



ORIENTAL POPPY WATER SET IN MARIGOLD

Note the tall tankard type pitcher that Northwood used in this pattern. It is interesting to note that these tall tankards are never signed with the "N", while the tumblers do contain the famous Northwood trademark. This set is shown here in the marigold and like those found in the green and purple are very fine sets indeed. The sets found in cobalt blue, ice green, and pastel blue are very rare and most attractive. The white set, while not as rare or valuable as the above three sets, is a beautiful set and certainly is not easily found. You can be justly proud to own this fine set in any of the various colors. Only a very few water set patterns were offered in as many colors as was the "Oriental Poppy" pattern.

This is article #58 in this carnival glass series. Next month we will bring you a pattern that is not so well known to carnival glass collectors. It will feature the unusual and quite rare "Jacobean Ranger" tumbler.



TULIP & CANE GOBLET -- CLARET -- WINES

"Tulip & Cane" is an old Imperial pattern. Sometimes you will find this pattern called Imperial #9. Sherman Hand, in his book #4 -page 69, shows the large goblet and calls it "Tulip & Cane". I have always liked names better than numbers so for that reason I have used the name "Tulip & Cane" for this pattern. Most collectors do call these wines and goblets "Tulip & Cane" today. This pattern was made in clear crystal before the carnival glass era and was later carried over into iridescent glass. This shape was made in four different sizes as shown in the picture above. We are showing it here because it is the first time I have seen all four sizes together in one collection. From an old Imperial catalog, we noticed these four pieces illustrated side by side, so we know that it was made in four different sizes. The old Imperial catalog lists them as an 8 oz. goblet, 4 oz. claret, 3 oz. wine and 1 1/2 oz. wine. These are listed on the same page along with "Smooth Rays" and "Flute & Cane" containers of this same type. At the top of the page is written: BRIGHT IRIDESCENT. RUBYGOLD ONLY. We found our first piece, the larger 3 oz. wine, back in 1974 and it took us until July 1982 to find the fourth one, the 4 oz. claret. Imperial did reproduce the goblet in aurora jewels (blue) back in 1970. New carnival glass collectors call this pattern "Kite & Panel". Have no fear though, because the old ones were made only in marigold and the new goblet is in blue.

DOUBLE TAKES

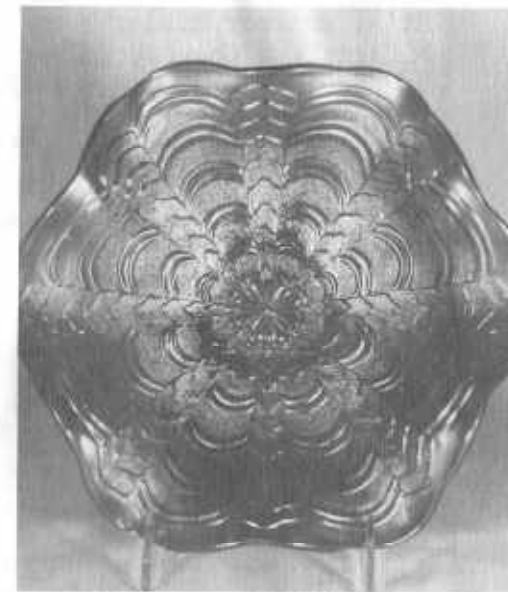
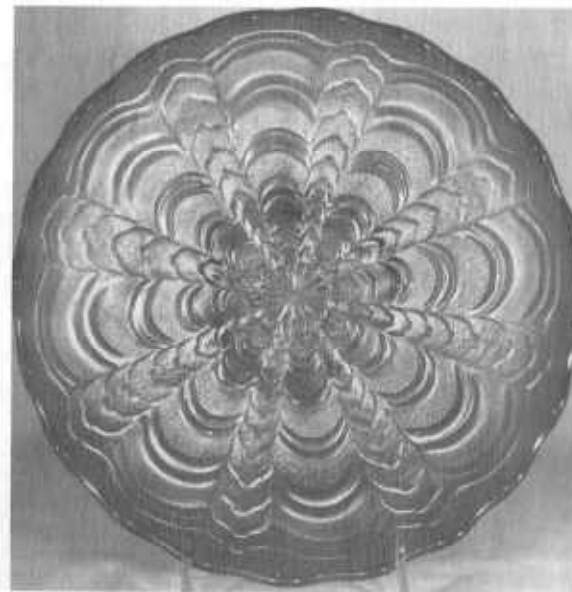
by DON MOORE

It has always intrigued me that so many patterns were made in bowls of two, and sometimes three, different sizes. I am not referring to berry sets or ice cream sets but to those patterns where they made a 9" or 10" bowl and then one in the same pattern that is substantially smaller. There is no indication that the two sizes were part of any kind of a set.

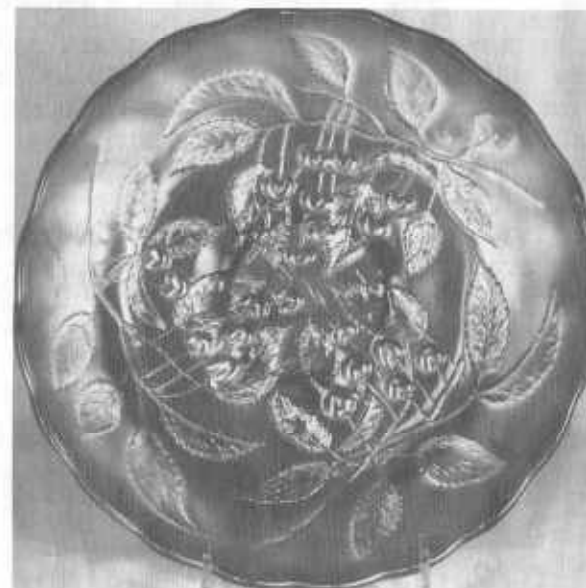


Shown here, for example, is the Millersburg Seaweed pattern. Photo #1 shows the standard 10 1/2" ruffled bowl while photo #2 shows the same pattern in a seldom seen 8 1/2" ice cream shape bowl. The smaller bowl is the size that was used to make the rare Seaweed plate. To my knowledge no plates were made from the larger bowl.

Since a new mold was required for the second bowl, I would have thought they might have preferred to add a new pattern to their line. On the other hand, the pattern might have been so popular that they chose to go with a proven winner. It is also interesting that in many cases, particularly with Millersburg patterns, that one size is rare while the other is readily found. Could one of them have been experimental or perhaps just a size that did not sell?



The Millersburg Rosalind is another excellent example of this "two bowls-same pattern" scenario. The 10" bowl in photo #3 is the standard size but is usually seen in the ruffled shape. The ice cream bowl shape shown here is very rare. The 8 1/2" bowl in photo #4 is a rare and seldom seen size in this pattern. Here again it is this smaller size that was flattened into the rare 9" plate. I have never heard of a chop plate that was made from the larger bowl.



Still another Millersburg bowl that was made in more than one size is the Millersburg Cherry. (often called Hanging Cherries). Photo #5 shows the 10" ice cream bowl shape that is the one most often seen. It also comes ruffled and very rarely is found with a Hobnail back. The low bowl shown in photo #6 measures 6 1/2" and is sometimes called a plate. It does not, however, have the contours that are necessary to be a plate as it turns up abit too much at the edge. In addition to the two sizes shown here, there is also a rare third size bowl that measures about 8 1/2". The two I have seen were ruffled. If we were to count the 4" sauce, there would be four sizes in this single pattern.



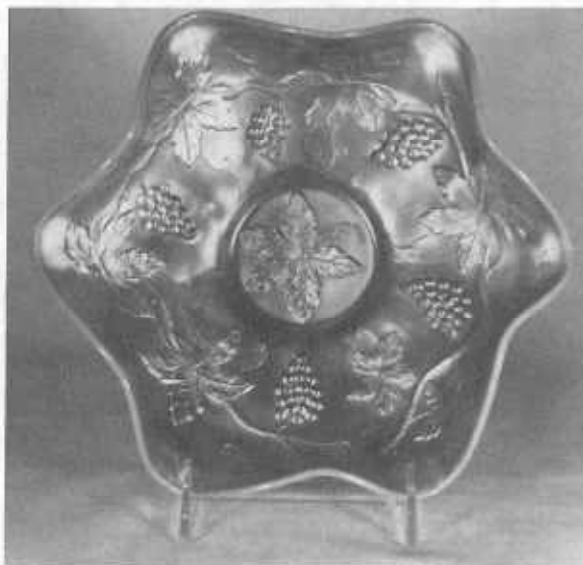
Millersburg had to be the leading proponent of designing a pattern and sticking with it. The Little Stars pattern shown here-is still another example of using the same design for bowls of different sizes. This pattern should not be confused with their Many Stars bowl where they made only the one 9 1/2" size. The 7" ruffled bowl in photo #8 is the size and shape usually seen. Now and then this size turns up in the ice cream bowl shape. The 9" bowl shown in photo #7 is rare. Only four or five of these are known and they are all in the ice cream bowl shape. In addition to the two sizes shown here, there are two very rare 10 1/2" bowls known in this pattern. One of them is cracked. So here again we have a pattern that was made in three sizes. It is a challenge to have any one of them in your collection, a dream to have two and a miracle to have them all three.



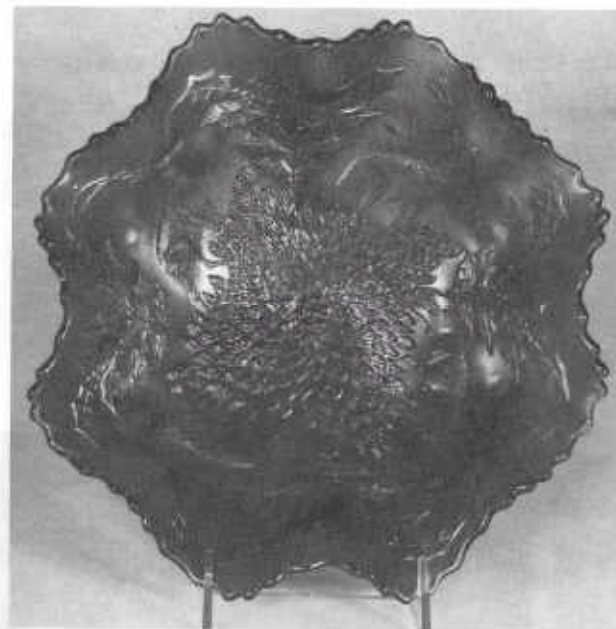
There are four versions of the Millersburg Peacock pattern. The 10" bowl shown in photo #9 is refered to as Millersburg Peacock and Urn. It always has the bee but there may or may not be beading on the urn. This piece is usually ruffled. The ice cream bowl shape as shown is very scarce. A second version of this 10" bowl is called Millersburg Peacock. It has no beading, is radium finish and more rare than the Peacock and Urn.

The 9" bowl shown in photo #10 has become known as the "mystery" Peacock because of the confusion as to the maker. I am convinced it is Millersburg. It is correctly called Millersburg Peacock and Urn Variet. It has a bee and two rows of beading. This bowl is usually ruffled. The ice cream bowl shape as shown is the only one I have seen. These "mystery" Peacocks are all rare.

The fourth version of this pattern is called Millersburg Peacock Variet. It is a tightly ruffled 7 1/2" bowl (Courthouse bowl size). It has a bee but no beading and is a rare little dude.



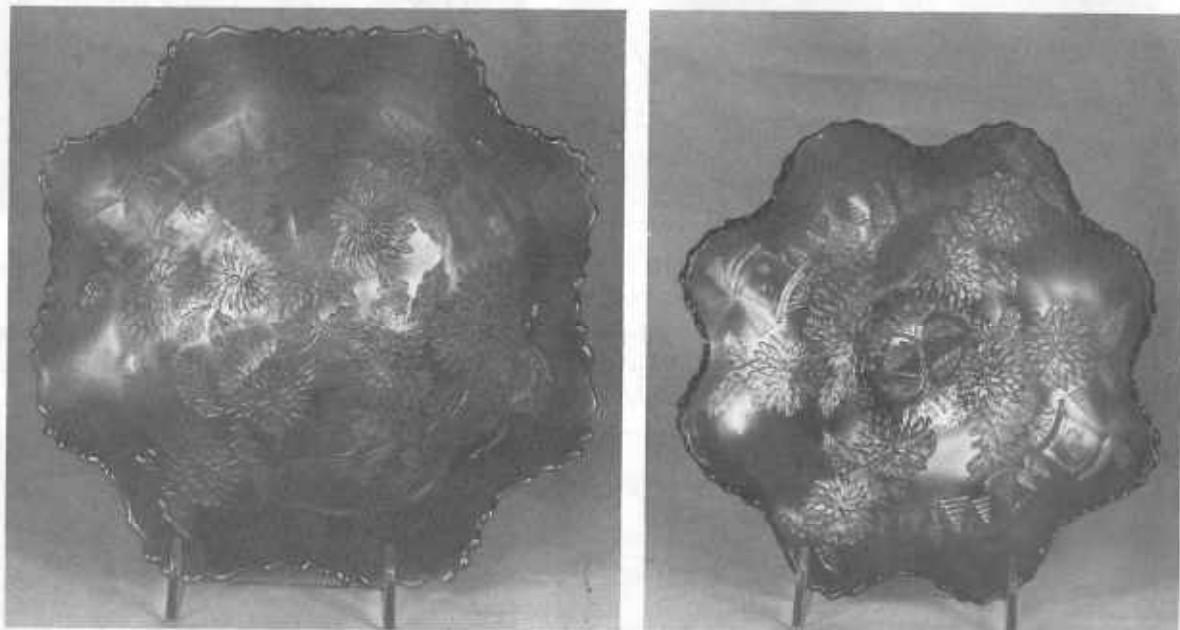
While the patterns shown to this point have all been Millersburg, this company did not have an exclusive when it came to using the same pattern for bowls of various sizes. The Vintage pattern shown here is, of course, a Fenton product. The bowl shown in photo #11 measures 9" while the one in photo #12 is only 7". They are both aqua Opal. This makes them rare, as is also the case when found in red. In other colors, however, they are quite easily found. This pattern can also be found in a 10" bowl. I have not seen this larger bowl in aqua opal but it is found in red. All three sizes in this pattern, comes ruffled as shown, in an ice cream bowl shape and also with a ribbon candy edge.



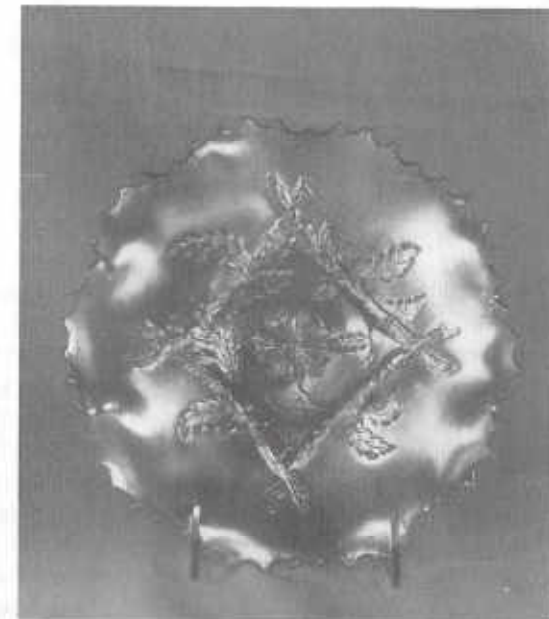
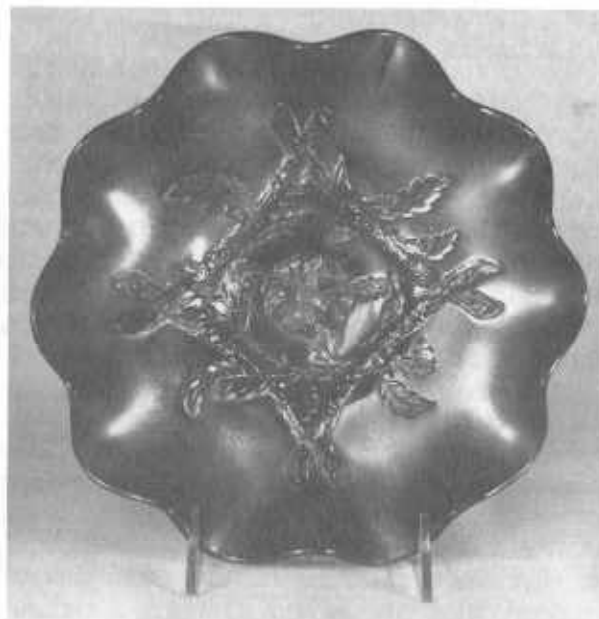
All of the bowls discussed to this point have been on a collar base. This popular Fenton Stag and Holly pattern was made only in footed bowls and plates. The 11" bowl shown in photo #13 is ball footed but the 8 1/2" bowl in photo #14 is on a spatula foot. While the bowls shown are ruffled, each is also found in the ice cream bowl shape.



On the previous page here is a pattern that is a running mate to the Stag and Holly. It is Fenton's Two Flowers. The bowls shown are identical to the Stag & Holly. Only the interior portion of the pieces is different. The Two Flowers shown are both red. They are rare in this color and in fact the larger bowl is one of only two known in this color. The small Stag & Holly also comes in red but a large one in that color has not surfaced to date. It would be a real find.



Still another Fenton pattern using the same pattern for bowls of different sizes is the Chrysanthemum. We have a further variation here; however, as the 11" bowl shown in photo #17 is ball footed just like the Stag & Holly and Two Flowers but the smaller bowl in photo #18 is on a collar base instead of spatula feet. Like the other smaller bowls it too comes in a rare red but the larger bowl has never turned up in that color to my knowledge.



We will close out this "Double Take" article with a Dugan pattern. This Apple Blossom Twigs design was used on the 9 1/2" bowl shown in photo #19 and on the smaller 8 1/2" version shown in photo #20. Note also that the smaller and more often seen bowl is fluted whereas the larger piece carries a smooth edge. Both are ruffled and on collar bases.

And what about Naorthwood and Imperial? Did they also employ this double size practice? Northwood certainly made many sizes in his famous Grape & Cable pattern and two sizes in the Wishbone but after saying that I come to a screeching halt. I am sure there are others but at the moment I will be darned if I can think of any. Imperial made several sizes in their Lustre Rose and Imperial Grape but that seems to be about it.

I will let you worry about the ones I have missed while I start thinking about red Farmyards and aqua opal Xmas compotes.

Don Moore



This very simple covered honey pot was made in 2 sizes. It is not certain whether the one shown is the larger or the smaller. However one mystery is cleared up. A correspondent wrote to me and sent a sketch of a tumbler with a Sowerby Peacock head trademark. I was puzzled because as far as I know, there are no iridised tumblers from this company although plain crystal ones are plentiful. When on a visit to the huge private collection of our friend Cyril Manley, I found the honeypot you see here, complete with lid, tucked away in a corner. The "tumbler" was the pot which had lost its lid. It is shown in Sowerby's 1927 catalogue but is not in the list of iridised goods. Another example of odd items taken from stock and given a Sunglow marigold finish. The example shown here, courtesy of Mr. Manley, is the only complete one I know of. A minor piece of Carnival but interesting nonetheless.

(Authors copyright reserved 1982)

NEXT MONTH....Xmas treat. The Diving Dolphins bowl.



Ray Notley
England



The Northwood Strawberry plate shown here does not look very exciting at first glance when seen in a black and white picture. However, if you were to see the plate and pick it up you would be very surprised indeed for it is made of white metal. It has the basketweave pattern on the exterior and some scratches where some dealer or other has hopefully tested the metal hoping it might be solid silver. It is old without a doubt. Various other bowls of this type have been reported (in the UK) but this is the only one I have seen. What is it? A salesmans sample, a trial from the mouldmaker? Who knows?

This is the first in a series of Carnival Curiosities.
(Authors copyright reserved 1982)

Ray Notley
England



PIPE HUMIDOR

The reason so very few examples of this beautiful Millersburg item exist, I suspect is because production did not begin until shortly before the demise of the plant. (whether that was the close at the first bankruptcy or when the Radium Glass Comapny venture failed is hard to say). At any rate, production was short time and the few examples known are all found in the radium process.

The humidor is just over 8" tall and measures 5" across the lid. A three pronged sponge holder is inside the lid to provide a means of moisture. The lid design is a simple one consisting of tobacco leaves radiating from the center with a large, well executed pipe with the stem curved to join the lid to form a clever handle.

The base has scalloped tobacco leaves extending to the bottom and a wreath of acorns and leaves around the center portion. Oddly enough, the original mold drawing shows none of these acorns or leaves, so they have been added just before the mold went into service (the mind fairly boggles with the thought an example might exist without this center design.).

Colors known are marigold, green and amethyst with the marigold easier to find and slightly less expensive and the amethyst most sought and bringing top price. However, I have a sneaking suspicion there may be a crystal Pipe Humidor out there somewhere and if this were true, it would be the find

of the year.

In numbers, I know of six marigold, three green and three amethyst examples but certainly more may exist and blue is a remote but possible challenge. But regardless of color, the Pipe Humidor remains one of the best conceived novelty items in all of carnival glass and must cause excitement wherever it is shown. If you own one, you are indeed one lucky person.

Carnival Cameos

BY DONALD MOORE



BIRDS AND CHERRIES (FENTON) - This pattern is quite common in bonbons and compotes, but for some reason the bowl and chop plate shown here are very rare. One chop plate is known in blue and one in marigold. Only three or four bowls have turned up. All that I have seen were blue. The chop plate measures 10 3/4" and the bowl is 8 1/2". They came from the same mold and were shaped while still pliable. While the bowl shown here has a ribbon candy edge, another one I have seen carried an eight ruffle edge. The blue chop plate sold for \$1,000 at the Heart of America convention auction in April of 1981. A blue bowl sold privately a short time ago for \$450.

Millersburg Festival Oct. 8-9-10

Every year the Millersburg, Ohio Fall Festival beckons us with outstretched hands, as it has for 20 years. Seems unbelievable we have actually gone there for so many long and interesting years. Usually its around the first week end of October. We have had every weather imaginable as we have attended this irresistible little Amish town all the carnival people know of by the lovely Courthouse bowls or plates. The old Court House still stands and is used daily. Amish horses and buggies can be seen tied to a hitching rail-the Court House seems proud of its place in history. Its always a thrill to see it every time.

We never tire of looking at the window displays the local residents set up for this annual affair. Usually nothing for sale but we enjoy looking and visiting as through the years we have made several friends there. We said all along this years weather should be nice for a change but as we left home I uncrossed my good luck fingers in resignation as it appeared somewhat stormy. It did too as we drove along. We stopped at Fenton Glass Co. for a fast look, then headed on to visit relatives at Canton-up early next day (Oct 8th) we went a day early. Fog was like low clouds over the car but later the sun came out and it was one of the most beautiful days I can ever remember. The foilage looked so pretty in the bright sunshine. The gold colored leaves were inches deep along the Millersburg streets.

We went immediately to the window set up by Lucille and Don Lowe of nearby Killbuck, Ohio. They specialize in carnival and can be counted on for a beautiful display. One can almost know their window as the crowds congregate there to ohh and ahh at the "beauties" that are arranged with such loving care. We later visited the Lowe home which is packed with glassware but even better is seeing Lucille. We have a wonderful time discussing carnival and catching up on a years news. She has been doing lots of articles for thier local news and gave us some to read which was so absorbing I spent a delightful time as we drove along reading them. I even forgot to look at the beautiful scenery on all sides as we drove to visit my sister and husband at Ashland, Ohio.

We always get up early to go into Millersburg to get good parking so planned to eat breakfast at the restaurant there. Just great to meet Bud and Betty Heeley of Painesville, Oh-Browns of New York and Tapps of Maple Heights, Oh. We all looked again at the windows with some stops on the side at garage sales-then on to the Antique Show at the schoolhouse. So little carnival there. Everyone missed Lowes and Snyders who usually could be counted on to have carnival for sale. We did not linger long as carnival people tend to ignore the other collectible items one can always see at the

shows. We went to the craft show under a huge tent and saw lovely items there-representing the talents of so many who seem gifted and able to make such pretty things. The day was overcast but comfortable.

As we drove back to Ashland we went by Heini's cheese house to sample every cheese imaginable. On one can believe the crowds at this place-long lines wait patiently for the free samples as they tempt one to buy each one-at another place called Alpine Alpa cheeses are made and on week days one can watch cheeses made at both places. We hope to do that next time. At Alpine we saw the World's largest cuckoo clock with its beautiful swiss music on the hour and half hour. The shop had over 300 cuckoo clocks ticking away as we browsed among the various gifts and crafts.

We visited Maple Heights, Oh to another sisters home where they had a small anniversary party for our 46th. We are always in Ohio for it. Not to get a party but by coincidence since its close to Millersburg days every year.

Up early again on Monday to go to Hartville Flea Market. Its close to Canton and such a big one. Such a lovely day and so much to rush around and see. Of course no Frolicking Bears or baby Carnival Kittens on any table so we had to be content buying nice Amish vegetables and fruits. Forgot we did find a green Butterfly & Berry vase so did not go home empty hand ed. I almost said "empty headed" which probably would have been close as anything to the truth. I remember thinking in the cuckoo shop that it might be an appropriate place for all of us-Oh well maybe its best not to know to much and clutter up our heads with trifles like the world conditions etc. "Whatever will be-will be" as some one famous has said. I do not know who but must have been a very wise person. Maybe one of the nice carnival people.

Anyway next thing to look forward to will be Tom Burns auction at New Philadelphia, Oh Nov 19-20. All these carnival get togethers sure make life worth living.

Grace & Byron Rinehart
Harleston, W. Va.

Listed are some of the prices received at the Tom Burns auction held in conjunction with the Air Capital Carnival Glass Mini Convention held in Wichita, Kansas.

M Inverted Strawberry lg compote 150	G G/C hatpin holder 90
G Double Star pitcher 70	P Singing Birds spooner 70
G Double Star tumbler 55	W Bushel basket 8 sided 145
M Dugan Floral & Grape pitcher 65	G Bushel basket 8 sided 270
G Tiger Lily water pitcher 140	W Orange Tree breakfast set 100
M Ohio Star vase 70	R Double Scroll console set 185
M Millersburg Cherry sauce 30	R Vintage Grape nut bowl 425
M Millersburg Seaweed bowl 50	R Acorn bowl 200
M Butterfly & Tulip sq bowl 185	M Poppy Show vase 210
M Bo Peep mug 135	M Heavy Iris pitcher 190
M Bo Peep plate 350	A Heavy Grape chop plate 225
M Thumbprint & Ovals vase 110	M Grape & Gothic Arches pitcher 100
B Rose Wreath/Vintage punch set 540	B Orange Tree 7 pc punch set 230
W Oriental Poppy tankard pitcher 500	W G/C banana boat 200
M Oriental Poppy water set 7 pc 425	P Nautulis 130
M Imperial Grape water set 7 pc 160	W Grape Delight nut bowl 105
M G/C tankard 7 pc water set 800	G Corn bottle 110
P G/C tankard pitcher 425	P Heavy Grape plate 8" 90
M G/C tankard pitcher 500	AO Rose Show bowl 80
P Dandelion tankard pitcher 1000	M Kittens banana dish 80
M Dandelion 7 pc water set 350	R Floral & Optic ftd bowl 200
G Concord bowl 95	AO Peacocks bowl 400
M Wild Rose sm compote 400	A Poinsetta ftd bowl 210
HA Cosmos & Cane tumbler 110	M Daisy Block rowboat 250
M Greek Key tumbler 50	B Grape Arbor hat 110
B Fentonia tumbler 55	B Fentons Thistle banana boat 270
M Blackberry Block water pitcher 375	AP Three Fruits bowl 380
G Imperial Grape goblet 75	B Rose Show plate 325
G Millersburg Feather & Heart tumbler 150	
M Wishbone tumbler 100	AO Drapery rose bowl 190
M Banded Diamonds pitcher 525	B Vintage femery 50
M Banded Diamonds tumbler 275	A Butterfly & Fern tumbler 60
M Zipper Loop lamp lg size 300	P G/C tumbler 25
S Zipper Loop lamp med 260	P Grape Arbor tumbler 35
A Blossom Time compote 140	M Good Luck bowl 50
G Inverted Feather cracker jar 110	M Good Luck bowl 85
IG Peacock plate N 190	M G/C stippled tumbler 65
B Orange Tree hat pin holder 105	G Blackberry Block tumbler 55
G Scale Band tumbler 175	B Wildflower bowl 90

Sometime ago there was an article in the H.O.A.C.G.A. about the Whirling Star punch set, that appeared in the notebook. The writer thought it perhaps was not old. I have one, like the one appearing in the notebook. My neighbor bought used in the early thirty's. Mrs. Rose Presznick has the new set pictured in her new carnival glass encyclopedia. They are very different-the new one has six hobstars vs 4 in the old. The new is much larger, different rim etc.

Elmer Cregar
Keymar, Md

I think your newsy bulletin is beautiful. I would not think of skipping over one line. Keep up the good work. You can not please everyone-but heres one in Florida that says great.

Ruby Pit
Florida

I am writing for information I hope you can help me with. I need a good clear photograph of a Lustre and Clear water set by Imperial.

I thought the club might have this in their files or you might know where I could obtain one which I would be glad to pay for.

Stanley Schnepf
RR 1
No. Manchester, Ind 46962

The arrival of a newsletter is a high point of each month, and we hope to make your 1983 convention, our first.

Yvan & Ruby Beaudry
City of Two Mountains
Quebec, Canada

A MESSAGE FROM ONE OF OUR MEMBERS

H.O.A.C.G.A. bulletin, which I have just received. Whenever a bulletin comes, I immediately turn to the "For Sale" section. After I look it over and decide what I want, I read the rest from cover to cover. I always look over the "For Sale" section a second time just to make sure I have not missed anything.

Today I read from the business meeting summary from September that you are planning to "put before the general business meeting in April", the idea of a possible charge for sale items to be listed in your bulletin. For the good of the club I strongly feel charging to advertise sale items in the bulletin would be a bad mistake.

To a member the monthly bulletin is the most beneficial aspect of belonging to H.O.A.C.G.A. Members appreciate being able to buy and sell with no charge, especially those that can not get to the annual convention to purchase carnival. A charge would cut the number of sale items advertised and defeat the purpose of a monthly bulletin. Of the three major carnival clubs H.O.A.C.G.A. is the only publication with this feature. The monthly H.O.A.C.G.A. bulletin would never be as successful with a charge to advertise.

As a Club are we that poor that we must charge members to advertise their "For Sale" items.

Ruth Schinestuhl
Absecon, New Jersey

Thank you for your comments. All members are urged to voice your opinions on matters such as this. You are a member, your views are important and if you cannot attend the conventions let us hear from you as to your likes and dislikes.

Editor

The Tampa Bay Carnival Glass Club met Sunday, October 17th at the home of Dorothy and Art Smith in Lakeland. As is the custom the group enjoys a delicious buffet luncheon prior to the formal meeting. Good tasty food awlays seems to be part of any carnival glass group gathering.

Following the business meeting Art Smith led a discussion based on Wily Addis's book "What's Behind Old Carnival". Several glass pieces were displayed to illustrate the text.

Plans for the Lose Your Heart to Carnival Glass Jamboree to be held February 11 and 12, 1983 were discussed. Special room rates are available and the display area has been doubled. We have received no word from Tom Burns regarding an auction although he was contacted some time ago. At this point we will be interested to hear from anyone who would like to conduct a carnival glass auction in Florida on February 12. We would appreciate a reply from Tom.

The next regualr meeting will be held with Nick and Maria Vafiadis in Tarpon Springs. Come to the meeting early and visit historic Tarpon Springs. The meeting will be November 21 at 12 noon.

Arthur I. Smith
Florida

WELCOME NEW MEMBERS

M/M Robert Parker, Oshawa Prov., Ontario, Canada
M/M Eugene Clark, Miami Shores, Fl
M/M Ralph Pastorelli Sr., Utica, N. Y.
George Webb, Medicine Hat, Alberta, Canada
Michael Brown, London, England
Elizabeth Frances Greenlee, Cheyenne, Wyo
Andrew Firestone, San Diego, Ca
SM. Sgt. Demia Stallings, Eglin AFB, Florida
M/M Jim Rose, Kingston, Ok
M/M F. Thomas Burns, Louisville, Ky

AIR CAPITAL HOLDS FIRST MINI CONVENTION

The Air Capital Carnival Glass Club held its first Mini Convention on October 15-16-17, Wichita, Kansas Airport Sheraton Inn. What a turn out we had. We were so happy that so many came to share with us a last fling before the winter sets in and we are confined to our homes until next Spring. Thirteen states were represented with the folks from Vermont (Mr. & Mrs. Carl Hendrickson of Montpelier, Vermont) coming the longest distance to be with us. At the banquet we had 94 people and around 70 bidding numbers for the auction. We estimated around 150 people attending the auction. Mrs. Hill came with her many pieces of beautiful Millersburg Glass for sale in her room. So many brought beautiful glass to sell or trade. The halls were busy each evening and during the time no activities were going on. Our banquet Speaker Mr. Don Moore gave us one of the finest programs. We can only say thank you to all who attended and we hope to see all of you next year about the same time of year.

Donald E. Kime
Secretary

Just a short note to report that those good finds are still to be had. Ruth and I recently attended a farm auction in Oden, Kansas as they had a piece of shop equipment I was interested in.

When the sale got underway I could not resist the temptation to bid on something every now and then. As a result I came home with a few things I did not need. I also came home with a box of miscellaneous glassware and dishes. Among the assorted dishes in the box, believe it or not were 6 M Stork & Rushes tumblers - anyone have a pitcher for sale?

Walt Wilson
Derby, Kansas

We repeat the guide lines set up in years past for the benefit of the new members and as a reminder to all. Member families may advertise ten (10) FOR SALE and ten (10) WANT ads each month free of charge.

All advertisements, announcements, letters or any other item to be printed, must be received by the Bulletin Secretary by the 1st of the month to insure being published the month received.

1. In the absence of any chips or cracks being noted the piece will be considered perfect.
2. A 5 day return privilege at buyer's expense providing it is not as advertised.
3. All postage and insurance extra.
4. All for sale items must be priced - no bid items will be published.
5. The H.O.A.C.G.A. and paper do not accept any responsibility for items bought or sold thru this paper.
6. Marked Northwood pieces - please use (N).
7. Only OLD CARNIVAL GLASS items will be published.- The only new Carnival items accepted are the H.O.A.C.G.A. souvenir items.

For accuracy of description, the following is recommended:

A - Amethyst	PM - Pastel Marigold
P - Purple	R - Red
G - Green	C - Clear
B - Blue	IG - Ice Green
CB - Cobalt Blue	IB - Ice Blue
M - Marigold	AMB - Amber
PO - Peach Opalescent	S - Smoky
AO - Aqua Opalescent	W - White
EI - Excellent Iridescence	L - before color means light
GI - Good Iridescence	D - before color means dark

EXAMPLES: LM EI Brooklyn Bridge bowl \$250.00
 DP EI Good Luck bowl (N) small base chip 75.00

It would be appreciated if you will please use these codes suggested, it will be less confusing to everyone and also be helpful in the typing and set up of the bulletin.

Jerry Hulsey, 104 23rd St S W, Fort Payne, Al 35967 PH 205-845-2273

IB EI	Concave Diamonds water set 8 pc including lid	325
P EI	Diamond Lace tumblers 4 ea	40
M EI	Butterfly & Berry water set	225
P EI	G/C dresser tray	170
P EI	G/C 9" plate	80
P EI	G/C water set	350
AO EI	Daisy & Drape vase ftd	325
M EI	Heavy Iris pitcher	315
LM GI	Floral & Grape water set	175
M GI	G/C water set	175

Burney Talley, 1814 Slate N W, Albuquerque, N M 87104 PH 505-242-1261 Eve

G GI	Coral bowl ice cream shape sm chip one flute	45
A EI	Scales 6" bowl	22.50
PO EI	Single Flower int Rays 7" bowl	25
C EI	Flat plate 10" cut etch Floral pattern stretch effect pastel irid	60
A EI	Blackberry Wreath 7" flared bowls radium finish 2 ea	45
A EI	Fine Cut & Roses candy dish	30

Joe Watson, 2731 Wisconsin, Joplin, Mo 64801 PH 417-623-5408

P EI	G/C 9" plate	85
A EI	G/C breakfast set S&C N	160
M EI	G/C ftd plate	58
M EI	G/C 2 handled bon bon	29
P EI	Stemmed whinsey bottom of sweetmeat N edges turned down jelly compote	125
P EI	G/C whinsey tea cup N	55
B EI	Blackberry Miniature compote 2 ea	50
P EI	Three Fruit's plate 9"	75
B EI	Vintage nut bowl 6 footed	60
P EI	Leaf & Beads rose bowl	65

Donna Huskins, Box 8214 Stn A, Halifax, Nova Scotia B3K-5L9 PH 902-443-5441

M EI	Orange Tree orange bowl 4 ftd	115
LM GI	Pony bowl	100
A EI	Beaded Shell tumblers 2 ea	65
B EI	Enameled Cherries painted water set 4 tumblers	495
W EI	Doubled stemmed rose bowl with dome base	150
M EI	Fashion punch bowl & base 6 cups two tips broken	200
M EI	Canada Dry bottles 4 ea	30
M EI	Dahlia creamer	95
M GI	Butterfly & Berry butter dish	100
M EI	Funeral vase 15 3/4	125

All prices quoted are canadian dollars

Don Doyle, 2416 Ashland Ave, Rockford, Il 61103

A GI	Millersburg Peacock at Um sauce satin	35
B GI	Strawberry bon bon	40
M GI	Panther ftd sauce	35
P EI	Millersburg dome ftd round chipped tooth on base	90
B GI	Pine Cone 6" plate	45
M GI	Universal Home bottle rare	30
G PI	Poinsettia, milk pitcher satin rare color	125
M GI	Millersburg Blackberry Wreath 8" bowl	30
CIM EI	Flute pitcher from Whitlow collection	125
A EI	Iris buttermilk goblet	45

Diane Fry, 5395 Middleton Rd, San Diego, Ca 92109 PH 714-272-1663 aft 5

M GI	Golden Wedding bottle	24
M EI	Propeller compote small	28
M EI	Cosmos varient bowl	38
M EI	Lattice & Daisy tumbler	36
G EI	Wild Rose open Heart ftd bowl N	45
A EI	Peacock Tail 5 1/2" dish fluted	35
B GI	French Knots hat	29
P EI	Heavy Grape 5 1/2 dish	32
P EI	G/C candlestick (N)	98
P EI	G/C regular tumbler (N)	50

La Vern White, Box 311, Grafton, Ia 50440 PH 515-749-2923 aft 6

A EI	Vintage 2 handled nappy	27
G EI	Vintage 7" dish	27
S EI	Vintage handle server	35
G EI	Leaf Beads ftd bowl (N)	35
PM EI	Grape Leaves bowl (N)	35
M EI	Wind flower bowl	35
A EI	Panelled Dandelion tumbler	30
PM EI	Grape Arbor tumbler	18
B EI	Painted Cherries tumbler	16
M GI	Marilyn pitcher minute sliver	300

Bernard Taps, 3672 E 59th St, Cleveland, Oh 44105 PH 216-883-8744

B EI	Butterfly & Fern water pitcher	395
M EI	Flute & Cane 8 1/2 pitcher 1/4 grnd on lip	100
C EI	1909 Shriners Champ pinhead under one ft	45
W EI	Fine Cut & Roses candy fanciful int 2 legs chiped	45
M EI	Lotus & Poinsettia 10" 3 ftd bowl	30

Don Staley, 3615 Highland Lakes, Kingwood, Tx 77339 PH 713-358-0412

W	Fine Cut & Roses candy dush fancy int	75
M	G/C one handled nappy	75
A	Holly Sprig handled nappy	75
M	Hobstar Spooner	30
IB	Heart & Flower bowl	140
AMB	Leaf Swirl compote	65
W	Nippon bowl	90
P	Wild Rose bowl open heart	45
G	Holly Hat	30

Mike Bevill, 48528 Hawk, Selfridge A.N.G. Base, MI 48045 PH 313-949-4766

A EI	Little Fishes sm berry bowl rare	150
P EI	Emb Mums 9" ruffled bowl	85
R EI	Orange Tree lg shaving mug cracked	60
PO EI	Fan gravy boat	85
AO EI	Fine Cut & Roses candy dish chip on feet	125
V EI	(N) Tree of Life compote	50
CLB EI	Unlisted Swirl covered powder jar	30
M EI	Kittens card tray sm spider	30
LM EI	Signed Heisy 6" sm plate	20
SASE for Carnival listing		

Al Sebaugh, 9116 Fort Donelson Dr., St. Louis, Mo 63123 PH 314-843-6122

A EI	Maple leaf water set 6 tumb	365
A EI	Butterfly & Plume water set 6 tumb	495
M EI	G/C water set 6 tumb	435
A EI	G/C sweet meat	235
P EI	G/C butterdish	345
A EI	Greek Key plate	190
W EI	Peacock on Fence	195
W EI	Holly plate	165
P EI	Good Luck plate	175
DM EI	Octagon water pitcher	120

Norene Campbell, Box 107, Ocate, N M 87734 PH 505-666-2237

DM EI	Wide Panel milk pitcher 6 goblets	185
M EI	Robin Mug	45
M EI	Jack In Pulpit vase green pedestal base	30
M EI	Magnolia Drape pitcher 3 tumblers	150
P EI	G/C water set 6 pc	375
P EI	Raspberry tumblers 2 ea	30
B EI	Peacock at Fountain tumblers 4 ea	30
R EI	Blackberry basket	190

A. A. Fogleman, 101 Cedarwood Dr, Jamestown, N C 27282 PH 919-454-3267

A EI	Millersburg Courthouse bowl round	325
R EI	Fine Rib vase 8 1/2"	175
M EI	Butterfly & Tulip square bowl	300
G EI	Shell ftd nut dish 4 ea	25
IB EI	Embroidered Mums bowl nick on one tooth	95
M EI	Kittens cereal bowl	100
M EI	Kittens banana bowl	100
B EI	Good Luck bowl piecrust edge	110
P EI	Oriental Poppy tumbler	38
G EI	Hattie plate 9" rare	150

Marion Hartung, 814 Constitution Ave., Emporia, Ks 66801 PH 316-342-6200

M EI	Vineyard 7 pc water set	275
P EI	N's basket	85
B EI	Chalice	55
P EI	Heavy Grape chop plate	450
P EI	Leaf Rays round nappy	42.50
M EI	Vintage banded mug	40
A EI	Beauty bud vase 8 1/2	55
G EI	Beaded Cable rose bowl N	55
W EI	Floral & Wheat stemmed bon bon	70
P EI	Imperial Grape carafe	130

Gil Corriveau, Box 5, Sturbridge, Ma 01566 PH 617-347-3304 days 617-347-9930 nights

W EI	Memphis punch cups ea	60
W EI	Dahlia butterdish base	80
M EI	Octogen wine decanter	60
P EI	G/C hatpin holder	145
B EI	Orange Tree powder jar	60
W EI	Peacock at Urn sm ice cream dishes set 6	300
M EI	Butterfly & Berry butterdish	80
PO EI	Raindrops bowl	55
P EI	Star of David & Bows bowl	50
M EI	Orange Tree punch bowl & base	90

Earl Linquist, Box 165, Clarkfield, Min 56223 PH 612-669-7361

PO GI	Cherry int Jeweled Heart ruffled plate ext chip	20
PO EI	Jack in Pulpit vase candy ribbon edge	35
M EI	Memphis punch cups 5 ea	16
DM EI	Nu-art shades signed 2 ea	30
PO EI	Double stem domes ftd bowl 8"	75
G EI	Good Luck flat bowl pie crust edge 9" N	110
M GI	Horse Heads rose bowl rough spot on mold	75
DM EI	Wine & Roses goblet or wine (1)	35

Paul Jankauer, 5 Court of Overlook Bluff, Northbrook, Ill 60062
PH 312-478-0800 week days 312-272-4440 eve and week ends

M EI	Large open Mikado compote	155
M EI	Persian Garden 6" plate	35
R EI	Vintage Little femery or nutbowl 3 ftd	325
M EI	Oriental Poppy pitcher	200
A EI	Vintage wine	35
S EI	Wedding Ring bowl	25
P EI	G/C 7 pc water set	340
P EI	G/C powder jar and lid	75
A EI	Millersburg Cherry spooner & creamer ea	70
M EI	Zippered Loop lamp large size	375

Mary Kesterson, 3020 Mesa Rd, Willow Park, Tx 76086 PH 817-441-8410

P EI	Fleur De Lis bowl 8 1/2 flat	175
W EI	G/C banana bowl	310
AO EI	Leaf & Beads rose bowl	245
IG EI	Peacocks plate 9"	245
M EI	Horses Heads plate 7 1/2	110
IB EI	Nippon bowl 9"	125
W EI	Orange Tree plate 9"	125
B EI	Stag & Holly ftd bowl 11"	145
R EI	Blackberry Spray hat shpae	175
PO EI	Caroline bowl 3 sides up 8"	65

Mary Herren, 520 S. Berry, Morganfield, Ky 42437 PH 502-389-3121 aft 5

W EI	Cherry w/o Tree ext flat bowl	85
PO EI	Six Petals 8" tri cor dish	20
M EI	Millersburg Blackberry Wreath 9" ruffled bowl satin	30
P EI	Fishermans mug	65
Aq EI	Thin Rib vase 9 3/4 x 3 3/4	30
A EI	Vintage 5 1/2 berry bowl	10
M EI	Mpale Leaf tumbler	10
M EI	Thistle & Thorn creamer, spot on foot	10
M EI	Orange Tree shaving mug	15

Don Doyle, 2416 Ashland Ave, Rockford, Il 61103 PH 815-964-1800

B GI	Strawberry bon bon	40
M GI	Panther ftd sauce	35
B GI	Pinecone 6" plate	45
M GI	Bottle universal home Jeniins rare	30
M GI	Blackberry Wreath Millersburg 8" bowl satin	30
P EI	Fleur De Lis ftd round large Millersburg compote chipped tooth on base	90
G PI	Poinsetta Milk pitcher	100
CL EI	Flute pitcher from Whitlow collection	125
P EI	Iris buttermilk goblet	50
G GI	G/C hairpin tray	50

Dick Wetherbee, 847 Stafford St, Rochdale, Ma 01542 PH 617-892-4420 aft 6

AO EI	Drapery rosebowl crack	80
W EI	Hall lamp globe 7 1/2 x 6 cone shaped	35
PO EI	Stippled Petals dome ftd 2 sides up 9 x 6 bowl	70
B EI	Birds & Cherries bon bon sm nick	38
P EI	Primrose 9 1/2 bowl w/ Fine Cut Hearts on back	95
M EI	Raspberry milk pitcher (N)	115
AO EI	Leaf & Beads 3 ftd rosebowl sm crack	125
G EI	Millersburg Nesting Swan 10" bowl	245
PO GI	Coinspot compote	25
M EI	Fentons open lace basketweave 6" bowl 1 side up one side down	22

J. Blackburn, 408 Military Dr, Coeur d Alene, Idaho 83814 PH 208-667-2908

A EI	Star of David with bows bowl	52
A EI	G/C ftd bowl cactus ext	52
A EI	Hearts & Vine bowl candy ribbon edge	48
M EI	Rays Ribbon bowl	48
M EI	Orange Tree bowl	42
P EI	Leaf & Beads rose bowl inner pattern	58
M EI	Vintage 2 handled bon bon	28
B EI	Autumn Acorns bowl	40
A EI	Ribbon Tie bowl	36
PO EI	Leaf Rays nappy	30

Wesley Strain, 832 Carson Rd, St. Louis, Mo 63135

M GI	Daisy Squares goblet	175
M GI	Daisy Squares compote	175
P EI	G/C covered compote base only	125
B EI	Painted tumbler Little Daisies	25
M GI	Daisy Block rowboat	100
A GI	Daisy Block rowboat	200
B EI	N Peach Tumbler	50
A GI	Fishermans mug	75

Betty Moye, Rt 3 Gen Del, Nimitz, W V 25978 PH 304-466-4524 aft 6

M EI	G/C one handle nappy	65
Teal EI	#270 compote	45
PO EI	Scales 9 1/2 bowl	30
M EI	Fine Cut & Roses rose bowl ftd	65
EB EI	Good Luck bowl	165
G EI	G/C candle holder	125
AMB EI	Carnival Holly hat rare color	110
A EI	Dragon & Lotus 7 1/2 ftd bowl	60
B EI	Ribbon Tie 8" bowl	40
P EI	Holly Whirl 9 1/2 bowl	85

Jerry Jenkins, Box X, Salesbury, Md 21801 PH 301-546-3964 or PH 749-1876

A EI	Rays & Ribbons bowl	50
A EI	Peacock at Fountain butter dish	175
A EI	G/C hatpin holder	175
A EI	G/C Sweetmeat	185
A EI	G/C candlestick	65
G EI	Millersburg lg Holly Whirl near cut Wreath ext	55
M GI	Concord Grape bowl	65
A EI	Ten Mums bowl	95
A EI	Raspberry pitcher	200

Norma Wagner, Box 52, Bagley, Ia 50026 PH 515-427-5749

DM EI	Lustre Rose berry set 4 sauces	140
AMB EI	Lustre Rose 9" berry bowl	45
M GI	Fishermans mug crack	47
B EI	Persian Medallion hair reciever	52
W EI	Fishscale & Beads 7" plate	75
P EI	Flute stemmed sherbert	32
P EI	Lotus & Grape 6" ftd bowl	57
D EI	Imperial candle holders irid so deep cannot tell base color pr	150
W EI	Palm Beach butter lid	50
BA EI	Peacock & Grape ruffled bowl base glass black Amethyst when held to light looks red	140

Mary Welch, 213 Alexander, Scotia, N Y 12302 PH 518-393-7748

IG EI	Florentine candlesticks pr	49
M EI	Mayflower light shades have 2 ea	12
PO EI	Beads Tri corner compote ribbon rim	33
PO EI	Starfish compote	52
BO EI	#270 compote	49
M EI	Imperial Grape tumblers 2 ea	18
EI	Jack in Pulpit blue to pink mini hat	20
M EI	Lattice & Daisy tumblers 6 ea	14
Send 2 stamps for long list 350 items		

Dolores Versprille, 200 Dake Ave, Rochester, N Y 14617 PH 716-544-4688

M EI	Vineyard water pitcher	90
M EI	Golden Flowers vase	32
M EI	Stork vase	32
W EI	Grape Vine Lattice 7" ruffled plate	45
P EI	Millersburg Diamond water pitcher sm. flk on bottom	145
M EI	Premium candlesticks pr	40
M EI	Broken Arches punch bowl and base & cups ruffled	400
P EI	Diamond Lace tumbler	40
P EI	Heavy Iris tumbler	50
M EI	Fashion tumbler	15

WANTS

Louis Bradford, Rt 2 W, Paducah, Ky 42086 PH 502-488-3005

R Chrysanthemum 9" collar base bowl
R Persian Medallion 9" bowl
R Little Flowers 10" bowl
R Peacock & Um compote
R Lotus & Grape bon bon
A Beaded Shell water pitcher

A. P. Firestone, Box 33916, San Diego, Ca 92103

M Lion plate
C Lion bowl
IB Peacocks on Fence plate
IB Finecut & Roses rose bowl
IG Peacock at Um ice cream set
A Millersburg Peacock at Um Three small ice cream bowls
G Millersburg Peacock at Um master ice cream bowl
A Big Fish bowl
A Trout & Fly bowl
IB Rose Show bowl and plate

Bernard Taps, 3672 E 59th St, Cleveland, Oh 44105 PH 216-883-8744

G Inverted Strawberry water pitcher

La Vern White, Box 311, Grafton, Ia 50440 PH 515-749-2923 aft 6

M Kittens sauce
P Wreathed Cherry tumbler 3
B Wreath of Roses punch cups Persian Med int 1
G G/C candle lamp shades 2

Arney Talley, 1814 Slate N W, Albuquerque, N M 87104 PH 505-242-1261 Eve

M 474 tumblers 6
G Fieldflower tumblers 6
P Imperial Grape wines 4
P Imperial Grape decanter stopper
M 474 meddle size water pitcher
Corn bottles any color

Mike Bevill, 48528 Hawk, Selfridge A.N.B. Base, Mi 48045 PH 313-949-4766

M Wide Panel side lily will consider slt damage
G Butterfly & Berry table set pieces
AQ Panther bowl small
P Imperial Grape wine
Any Fenton IB pieces

Don Staley, 3615 Highland Lakes, Kingwood, Tx 77339 PH 713-358-0412

Octagon wines
G P V Imperial Grape wines
Star & File decanter stopper only
Diamond & Sunburst wines
G Daisy & Drape vase
M Inverted Feather wines
G Heart & Flowers compote
M Kittens plate
A Iris goblet

Judy Kasper, 2567 Loomis Dr, San Jose, Ca 95121 PH 408-226-1485 aft 6

Any color Dragon & Strawberry bowl or plate
G Lotus & Poinsettia
B Lotus & Poinsettia
M Lotus & Poinsettia
G Beaded Cable rose bowl without int ribbing

Mary Kesterson, 3020 Mesa Rd, Willow Park, Tx 76086 PH 817-441-8410

P Boutoniere
AO Drapery rose bowl
AO Beaded Cable rose bowl or any other color
PO Fanciful bowl
PO Round-Up plate
IG Basketweave Fenton open edge any size
P Nesting Swan
W Grape Delight 6 ftd nut bowl
IG Bushel basket N round

Walt Wilson, 1030 Kay St, Derby, Ks 67037 PH 316-788-3226 aft 6

M Stork & Rushes pitcher
G Field Flower tumblers
P Grapevine Lattice pitcher

Wiley Vaughan, Box 27, Rydal, Ga 30171

G G/C breakfast size sugar (N)
M G/C master berry with thumbprint bowl (N)
B Fenton Daisy bon bon

Wesley Strain, 832 Carson Rd, St. Louis, Mo 63135

Any blue Northwoods Cherry and Cable especially a base for the butter dish

Donald E. Kime, 1202 W 4th St, Haysville, Ks 67060 PH 316-524-3123

B Lotus & Poinsettia bowl
