

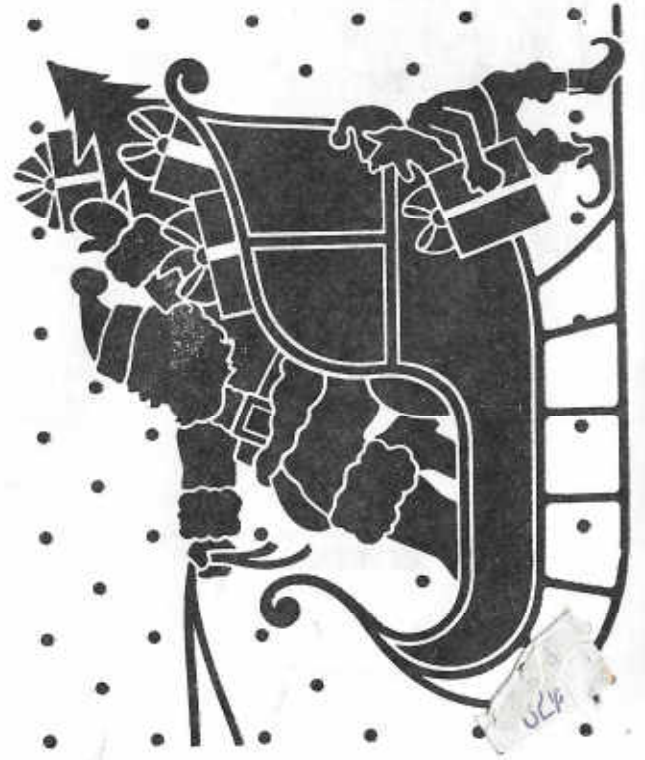
H-O-A-G-A
DONALD E. KIME
BULLETIN SECRETARY
1202 W. 4th ST.
WICHITA, KANSAS 67260

WICHITA, KS 672
DEC 21
PM
1982

WICHITA, KS 672
DEC 21
PM
FIRST CLASS
1982

December 1982
S M T W T F S
1 2 3 4
5 6 7 8 9 10 11
12 13 14 15 16 17 18
19 20 21 22 23 24 25
26 27 28 29 30 31

Igor Stravinsky



INDEX

UCB



Heart of America Carnival Glass Association, INC.

MEMBERSHIP JUNE TO JUNE
\$10.00 PER COUPLE OR SINGLE

PUBLISHED 15th OF
EACH MONTH

PRESIDENT:

GEORGE O. MCGREW JR.
6300 WOODWARD
OVERLAND PARK, KANSAS 66204
913-262-8822

VICE PRESIDENT:

GEORGE BOLLES
5204 CATALINA
SHAWNEE MISSION, KANSAS 66205
913-432-5438

TREASURER:

ELIZABETH BOLLES
5204 CATALINA
SHAWNEE MISSION, KANSAS 66205
913-432-5438

SECRETARY:

DIANE TREFF
13646 LEAVENWORTH ROAD
KANSAS CITY, KANSAS 66109
913-721-2917

BULLETIN SECRETARY:

DONALD E. KIME
1202 W 4th ST.
HAYSVILLE, KANSAS 67060
316-524-3123

FROM THE BOARD OF DIRECTORS

In the immediate future there will be a few changes in the financial policies of this Association. These changes were submitted by the Finance Committee to the Board of Directors for their consideration and action.

In the past this Association has relied heavily on the sale of souvenirs to finance the general expenditures of the club. Due to the lack of sufficient sales of the ice blue corn vase we were compelled to re-examine the policy concerning this method of financing. It is a fact that this manner of financing is unfair to those who purchase a souvenir since they were paying for items and services of those members who chose not to purchase a souvenir. Why this years souvenir did not sell is immaterial. It did bring to our attention that the Association cannot rely solely on this matter of financing due to its uncertainty.

We feel that we cannot step back and eliminate or cut back on the clubs strong points. Nor can we become stagnant in the Carnival Glass field. We also feel that it would be a great injustice to those who have faithfully purchased the souvenirs each year to deprive them of what they are now receiving from the club and the Carnival glass field in general.

The following list of recommendations were submitted to the Board for their disposition. Following each recommendation is the Boards decision and reason for acceptance or rejection. These decisions were not arrived at easily and much thought and discussion was given to each one. They were arrived at following the theory that all items should be self sustaining.

(1) Charge for ads in the Bulletin; Rejected. It was felt that this would drastically reduce the amount of ads in the Bulletin thereby taking a valuable service from the members.

(2) Charge a nominal fee for notebook inserts; Accepted. This has been a costly item for the association but we feel that it is too important to discontinue. Thru some footwork and tasks being performed by local members we were able to save about \$1800 from last years cost. It was agreed to charge \$3 for each insert plus \$1 for postage. This is practically at our cost.

(3) Charge a fee for registration at the convention; Rejected. The Board felt that the registration fee would be impractical since many probably would not bother to register. There will be changes at the convention which will divert some of the cost from the Association but they will be optional to those attending.

(4) Bulk rate mailing of the Bulletin; Rejected. Although this would have amounted to substantial savings for the Association there were disadvantages. On bulk rate mailing there would have been 2 to 3 week delay on the bulletin to certain areas. Those closest to the initial mailing point would receive theirs first. This would be a disadvantage to those who purchase glass thru the Bulletin especially those who live in the smaller towns. They would be no forwarding and no return on non-deliverable items. Basically there is no guarantee of delivery. Also the delay would affect dated material in the Bulletin such as auction notices and meeting times, dates and places.

(5) Increase dues to \$15. Accepted in intent. This was a difficult decision to make. We felt that the \$5 increase together with the bulk rate mailing would enable us to continue with a monthly bulletin. After discussion on the bulk rate mailing and its rejection it was unanimously proposed to increase the dues to \$20 effective June 1, 1983. This proposal will be brought forth at the annual business meeting in April as compared to the bulk rate in mailing system.

We discussed a couple of options presented.

- (1) Issuing a bi-monthly Bulletin
- (2) Limitation of articles in each Bulletin.

We felt that these options were a negative solution since the Bulletins are a main source of contact with the majority of the members. Please remember that the Bulletin is costing us about \$16.50 per member per year. At the last dues increase we had a postal increase several months late so in effect the Bulletin has been operating in the red for several years, sustained by souvenir sales alone.

(6) In the past this Association has always tried to return the receipts received to its members. But as stated before, there were certain areas that were unfair to most members. We hope that these changes will eliminate the unfairness and have each item carry its own load. A lot of members are under the incorrect impression that H.O.A.C.G.A. has money to burn when in fact we have less than other major clubs available for expenses plus we have considerably more expenses. We hope that each member will keep an open mind and realize that these discussions were not easily come by and judge them accordingly and realistically. As Always we welcome your comments on any of the above decisions especially on the dues increase compared to the problems of bulk rate mailing system.

Sincerely,
H.O.A.C.G.A. Board of Directors

s/George McGrew Jr. President
s/George Bolles Vice President
s/Diane Treff Secretary
s/Elizabeth Bolles Treasurer
s/Donald E. Kime Bulletin Secretary

2

CHRISTMAS GREETING

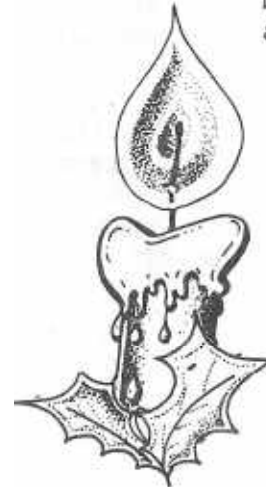


On behalf of the Board of Directors we would like to take this opportunity to wish each and everyone a very Merry Christmas and a Happy New Year.

Once again we have seen our hobby become known to new people from all over the world. It is through our clubs this is made possible as well as publications from the various clubs with their fine educational articles. We also want to thank the many members who have contributed this material to share with us. They have spent many hours on research and if we will but appreciate the work being done by these dedicated people, we think our hobby will thrive forever.

May this holiday season have a blessing upon you and may the coming New Year be a happy one.

George O. McGrew Jr. President
George Bolles, Vice President
Elizabeth Bolles, Treasurer
Diane Treff, Secretary
Donald E. Kime, Bulletin Secretary



3

CARE OF YOUR GOLD DECORATED CORN VASES

For those of you who have purchased the gold decorated corn vases. We have received a letter from Mr. Frank Fenton explaining how to care for your fine glass.

As with all gold fired decorations, on glass, the gold decorations will in time wear off if subjected to excessive abrasion or unusual rubbing.

When it has to be washed, wash it in mild soap and water and pat it dry with a towel instead of rubbing it hard with a towel. It will last much longer that way and should be just as good 25 years from now as it is today.

One of the reasons that we tell you this is that the iridizing of the glass adds something to the surface which causes the gold not to adhere quite as well as it does to ordinary non-iridized glass. We fired these at as high a temperature as it was possible to fire glass without having it melt down. They should last a long time with no diminishing of the beauty of the gold.

Cooley Miller
Souvenir Chairman

INFORMATION - WATER SETS - INFORMATION

I am in the process of printing the second part of the Water Sets for the H.O.A.C.G.A. pattern notebooks. I still need photographs of two water sets (pitcher and one tumbler), the Cherry Cable & Thumbprint (Northwood Cherry), Lustre & Clear, Octagon Variet, Rose Garden and Sunflower & Diamond.

If anyone knows, owns, or knows of anyone who has a Cherry Cable & Thumbprint pitcher please let me know and I will send a tumbler so we can have a pitcher and one tumbler together.

According to Sherman Hand, the Rose Garden pitcher sold at the Guida Auction in St. Louis, Mo. I do not believe that any tumblers exist to this pattern.

If any member knows where any of these sets (pitcher and one tumbler) are, please let me know because time is getting short to get the photographs and printing done before the next H.O.A.C.G.A. convention.

ROBERT GRISSOM
Notebook Chairman

ORDER FORM FOR 1982 H.O.A.C.G.A. GOLD GILDED SOUVENIR



Gold Band on Rim

Gold-Horseshoe & Whip

Gold on Cable

Gold on Rim Of Base

PLEASE MAKE CHECKS PAYABLE TO H.O.A.C.G.A. AND SEND THEM TO THE SECRETARY:

Diana Treff
13646 Leavenworth Rd
Kansas City, Ks
66109

WILL PICK UP:

1982 Gold Gilded
Ice Blue Corn
Vase (s) at \$45
each.

PLEASE MAIL:

1982 Gold Gilded
Ice Blue Corn
Vase (s) at \$45
Please add \$3
postage for each
vase.

PLEASE PRINT FULL NAME AND ADDRESS:

1983 SOUVENIR

All I can say is that Mr. Fenton has really out done himself on the 1983 souvenir. Mr. Fenton ran a few samples for us to view and to try out the mould after changing the year on the Loving Cup. Boy you talk about the rare colors in old carnival, wait until you see this. They talk about peach opal, aqua opal, red or any of the new colors that are turning up in old glass. Well just wait until you see this color. This may not be the rarest pattern ever made in a souvenir, but it is by far the best color that has ever come out. I am sure when you see it there will not be enough to go around. You know that we did not have the usual number to be made. There will only be 450 to 500. We are talking to Mr. Fenton to see if he can have some brochures made for the Bulletin so all of you can have a sample sneak preview. We will start the order blank in the January bulletin so as soon as that starts you should get your order in as soon as possible. I know that you will be as excited over this souvenir as I am. Words can not explain it, its just out of this world.

Roland Kuhn
Souvenir Chairman

Word has been received that Francis Heaton has passed away. They have been long time collectors and our sympathy goes out to Rovene and family.

We have also learned that Mary Lou Smith broke her ankle and we wish her a speedy recovery.



6

EDUCATIONAL TUMBLER SERIES

by JOHN & LUCILE BRITT



THE JACOBEOAN RANGER TUMBLERS

We show in the above photograph the "Jacobean Ranger" table size tumbler, "Jacobean Ranger" juice tumbler and the "Jacobean Ranger" miniature tumbler. Since the above tumblers are distinctly different from the true "Ranger" tumblers described by Mrs. Hartung in her book 6 page 48, we think in order to avoid confusion by collectors and since this was originally called the "Jacobean" pattern, that these outstanding and highly sought after tumblers should be known as "Jacobean Ranger" tumblers. Mr. Owens, in his very fine tumbler book, lists the "Ranger" miniature and "Ranger" juice. The latter two examples are actually "Jacobean" tumblers and were definitely made by a different company than were the true "Ranger" tumblers. Almost everything about them, except for the similar slightly concave squares, are distinctly different. I am enclosing a picture of the true "Ranger" elsewhere in this article and will devote a complete story to it at a later date. I am in no way knocking Mr. Owens tumbler book as I have one of them and have almost wore it out with use. I liked it so well that I sold a good many of these books for him. I am merely pointing out here the big difference in these two tumblers. I always thought it would be very confusing to tumblers collectors if someone should find a regular table sized tumbler in the same pattern as that of the miniature and

7

juice tumblers. That is exactly what has happened. We recently found a regular table sized tumbler in the exact shape and pattern as the miniature and juice tumblers. So if we also call this pattern "Ranger", we would have two table size tumblers that are called "Ranger". This would give us two tumblers with the same name that are decidedly different and could cause considerable confusion to collectors in the future as well as to those who collect tumblers at the present time. Therefore, I suggest that we merely add Jacobean to the "Ranger" juice and call it "Jacobean Ranger" juice and the "Ranger" miniature as "Jacobean Ranger" miniature. We likewise should call the larger table size Jacobean's as "Jacobean Ranger" table size tumblers. I believe this would greatly help a lot of collectors in identifying these two very different tumblers and would certainly avoid a lot of confusion. After all, the "Jacobean Ranger" and the regular "Ranger" tumblers are not only different, but were made by different glass companies as well. The glass factories were actually located many many miles apart. The featured "Jacobean Ranger" was first made in Czechoslovakia and later in England and was distributed by the Clayton Mayers Company of London. The "Ranger" in which most collectors know as "Ranger" and described in Hartung book 6, was sold by Cristales Mexicanos S. A. of Mexico. Since the "Ranger" pattern is clearly illustrated in old Imperial catalogs, the true "Ranger" could have been made by Imperial for the Mexican company or perhaps the "Ranger" molds were loaned, rented or sold to the Cristales Company of Mexico where they could have produced the "Ranger" pattern themselves. Which of these methods were used we are not sure of at the present time. We do know however that the "M" inside the "C" trademark seen on "Ranger" and "Oklahoma" tumblers stands for Cristales Mexicanos. I had always noticed that the "Ranger" and "Oklahoma" tumblers originally were found in either Texas or Mexico.



JACOBEOAN RANGER WATER PITCHER WITH TUMBLER

The "Jacobean Ranger" water pitcher that is shown above is owned by Bill & Thelma Harmon of North Vernon, Indiana. The "Jacobean Ranger" tumblers, as well as the water pitcher and a number of other pieces that I have seen in this pattern, are of a good rich marigold with super iridescence. Some of the tiny "Jacobean Ranger" miniature have a registration number along the base of the tumblers. We have seen others in this size that did not have this number, however. The few regular juice and table size tumblers that I have seen did not carry this registration number. The bottom of the tumblers are polished and have a rayed star pressed into the center of the base. The actual number of rays in this star differs according to the size of the tumbler. We have this tumbler in three sizes and a fourth size was recently found by Don Staley of Texas. I believe there will be more sizes of these tumblers found because one of the old ads illustrates seven different sizes. These iridized tumblers are not common in the states however, and Ray Notley says they are certainly hard to find in England that have iridescence.

The "Jacobean" glassware line was made in a great many pieces. Notice that one of the old ads states that it was from "some of the 120 pieces". From old advertising material, we find that it was originally made in Czechoslovakia. A 1930 advertisement shows the "Jacobean" line as being made in that country. Later during the big depression in 1931 a 50% tariff was placed on imported

glass into England. At that time the "Jacobean" molds were sent to England for continued production. When they began production of this line in England, it seems that many more pieces were added to the "Jacobean" series. In a 1926 advertisement in the "Pottery Gazette and Glass Trade Review", it states that "Jacobean" was made in 120 pieces and shows the tumblers as being made in five different sizes. In 1933 an ad from the same glass trade review showed the tumblers were made in seven sizes. In 1934 they advertised the line as including more than 250 pieces. It is interesting to note that in some of these old Jacobean ads that Madeleine Carroll was used in the promotion of this glass. These appeared in 1931 ads from the Pottery Gazette and Glass Trade Review.



Now
5 TUMBLERS
 IN THE "JACOBEOAN" RANGE

The original friendly "Jacobean" Tumbler is now obtainable in four smaller sizes—suitable for use as wine and liqueur glasses. All of the same fascinating shape and the same crystal clearness. Write for the beautiful new catalogue of the full "Jacobean" range, and see it at your Glass Shop.

Tumblers from 8½d. to 10½d. each.

JACOBEOAN

REGISTERED TRADE MARK
GLASSWARE

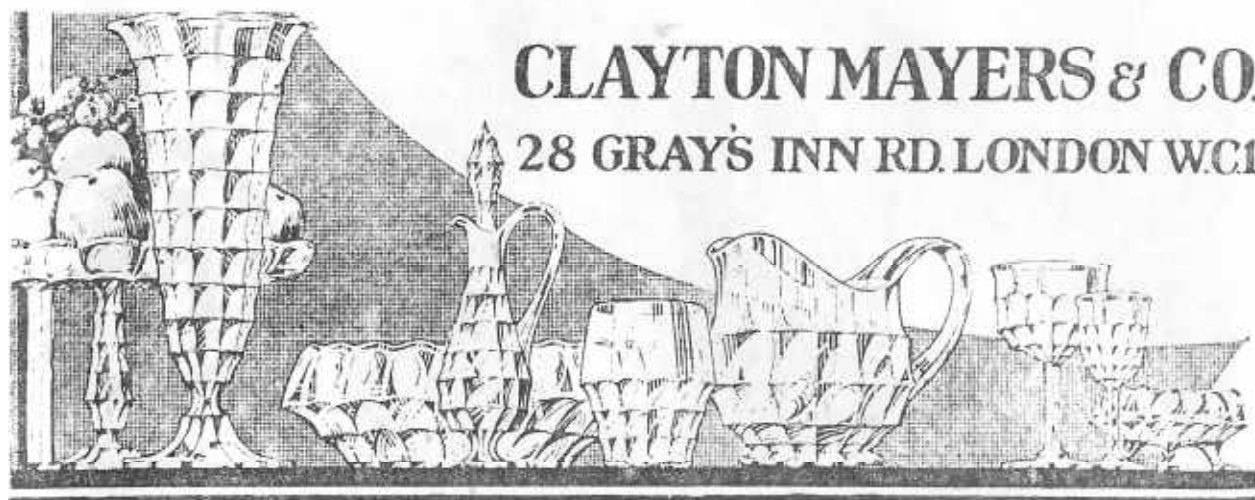
"One of the CLAYMER Series"

CLAYTON MAYERS & COMPANY
 25, GRAY'S INN ROAD,
 LONDON, W.C.1.

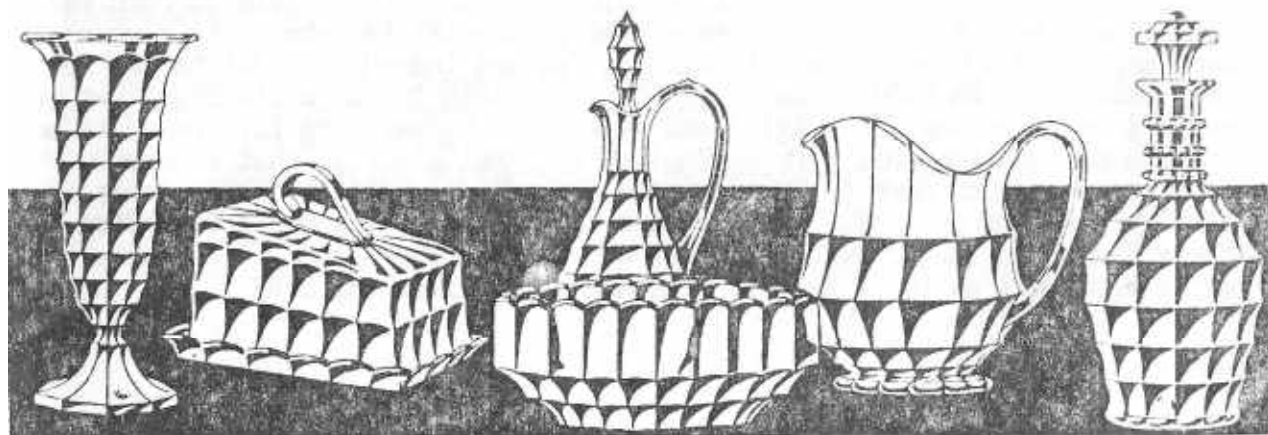


1933 ad same paper

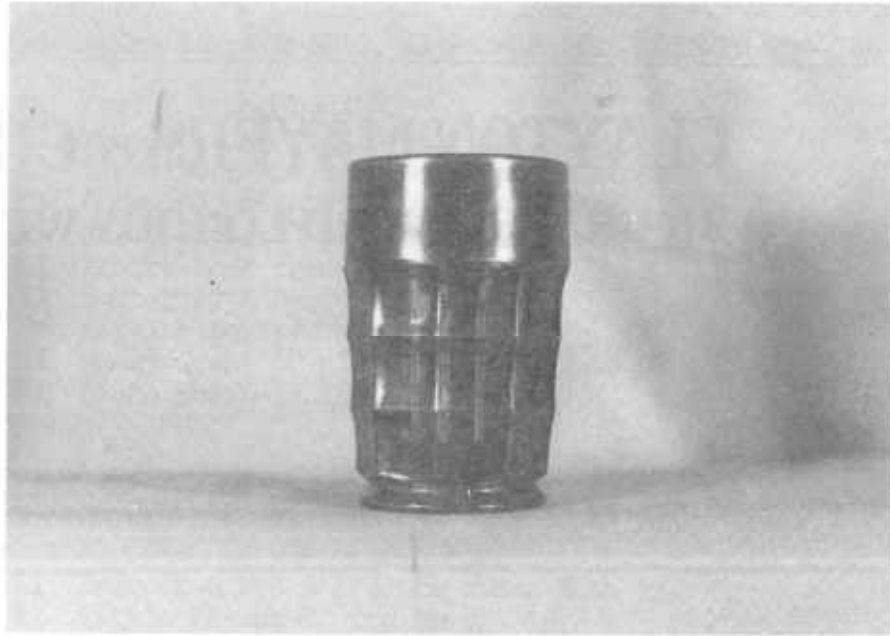
1926 ad The Pottery Gazette and Glass Trade Review



The pictures you see on this page are again ads from the 1926 and 1933 pages of The Pottery Gazette and Glass Trade Review. Of course the company placing these ads was the Clayton Mayers & Co. LTD. of London, England. We want to say thanks again to Ray Notley, of London England, for sending us this material to share with you.



by JOHN & LUCILE BRITT



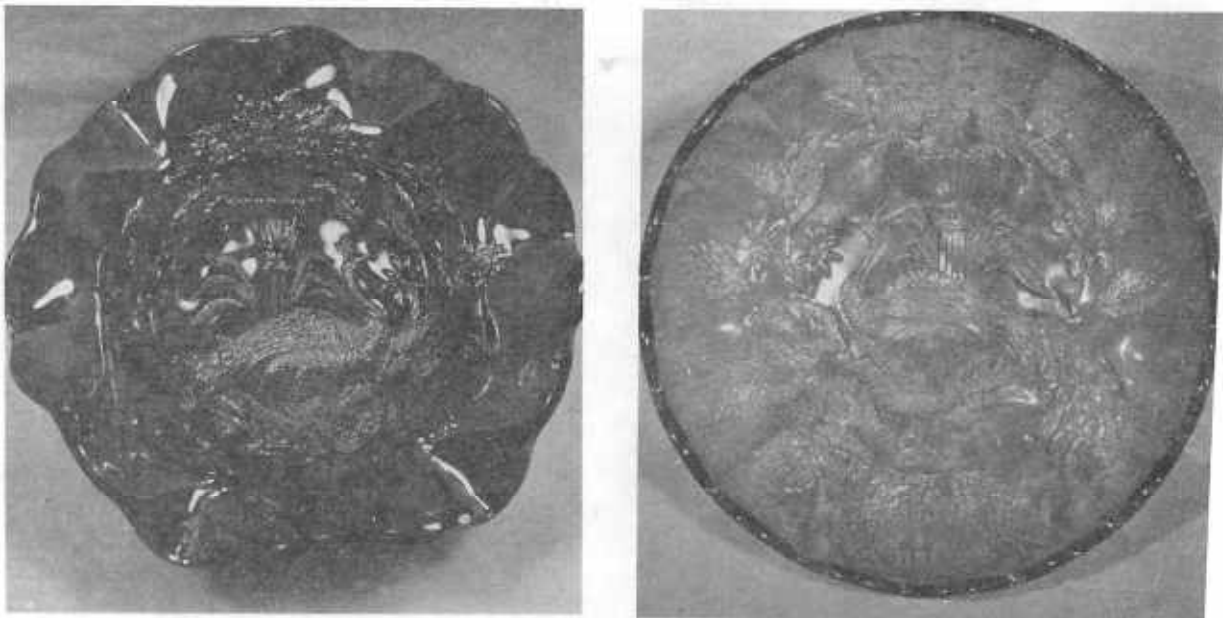
What we call the true "Ranger" tumbler is shown in Hartung book 6 page 48. It is also illustrated as No. 143 in Owens' tumbler book. The "Jacobean Ranger" juice tumbler is No. 144. We show the genuine "Ranger" tumbler here only to illustrate the big difference between this tumbler and that of the "Jacobean Ranger". The true "Ranger" above is signed with the "M" inside the "C" on the bottom of its base. As mentioned earlier, these two letters stand for "CRISTALES OF MEXICO". We will feature the true "Ranger" tumbler in next months bulletin, so more about this tumbler at that time.

The story of the "Jacobean Ranger" tumblers is our 59th article on carnival glass tumblers. All of the old advertising material in this article was provided to us by Ray Notley of England. We are indeed thankful to him for this material. We have a number of other tumblers in our collection that we believe to be of English origin, and he will be researching for some data on them as he continues his work on English carnival glass in that country. We hope to learn much more on English made tumblers as well as other pieces of carnival as time goes by. We also wish to thank the Harmon's for sending us their "Jacobean Ranger" water pitcher so we could photograph it for this article as well as to be used in the note book filler for 1983.



RARE NORTHWOOD'S NEAR CUT PITCHER & TUMBLER

The carnival glass pieces of the "Northwood's Near Cut" are nearly always signed with the Northwood "N" in a circle. The above photograph shows the only water pitcher that I am aware of in this pattern. Only four tumblers have been reported to date, all in marigold. The original name for this pattern was called "Northwood's No. 12". It is shown under that name in old ads from the Northwood company. Mr. Owens, in his tumbler book, lists this pattern as "Stretched Diamonds and Hobstars". Mrs. Hartung calls it "Northwood's Near Cut" and most carnival glass collectors call it by that name today. In Mrs. Hartung's early research of this pattern, only the goblet and compote were known to exist in carnival glass. She shows and describes the goblet in her book 3 - pages 46 & 47. The goblet and compote in purple are really quite scarce. I have seen only two of these goblets in marigold and I would consider them very rare in that color. I believe this was probably one of Northwood's earlier carnival glass patterns. I have seen tumblers in clear crystal and also in emerald green with no iridescence. The very rare carnival glass water pitcher and tumblers featured here are known only in marigold. The water pitcher shown above is owned by Mr. & Mrs. Larry Yung of Cincinnati, Ohio. The tumbler is from the writers collection.



PEACOCK PATTERNS

Perhaps the most difficult of all Millersburg patterns to sort out clearly are the Peacock patterns in all their variations because there are so many. While I have heard collectors express doubts, let me assure you all we discuss here are Millersburg. The simple fact is John Fenton could not say "no" and when presented with several possibilities, decided to try all of them.

It is reported, he bought several live male peacocks and turned them loose on the factory grounds so the designers could study them and it is not difficult to imagine several good designs advanced, so that he decided to "try them all". At any rate, it would certainly have been in character for him to do so, since excess was his style.

The first example is simply called Millersburg Peacocks and is illustrated in photos #1 and #2. Shown in photo #1 is the large bowl used in the berry set. It usually had 6 small bowls to complete the grouping. Please note the design has no bee, a flaired urn without beading and great detail in the mold work. Besides the berry set, the Peacock pattern can be found in ice cream sets (photo #2), a 6" plate whimsy (photo #6), a tri cornered bowl, a banana shape bowl whimsy, a spittoon whimsy and a rosebowl whimsy. All except the

plate are shaped from the large berry bowl. Colors are marigold, amethyst, green, clambroth and rarely vaseline.



Variants of the Peacock pattern can be seen in photos #3 and #4

The Peacock "Whimsey Proof" bowl (photo #3) is much like the small berry bowl except it was unfinished. The Peacock's front leg has a section missing and the urn has no bowl (additional flowers replace it). These proof bowls are found in marigold and amethyst and are rather rare.



Photo #4 is called Peacock Variant. it measures 7 1/2 in diameter and while it has a bee, there is no bowl to the urn. Some people call this a "shotgun" bowl and it is found only in the tightly ruffled style shown. Colors are marigold, green and amethyst but blue may show up someday all colors are rare and desirable.

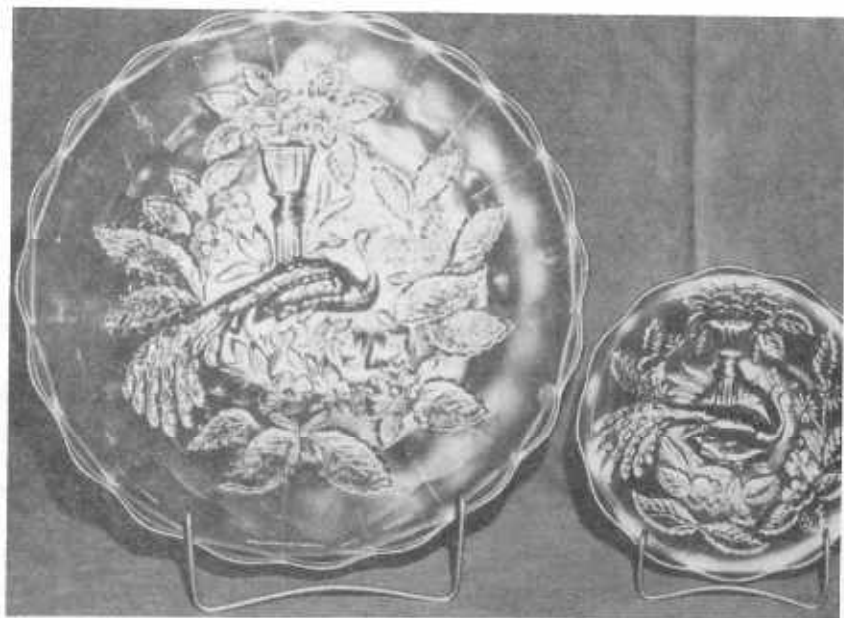


Now let's discuss the Millersburg Peacock and Urn pattern and the variants.

Photo #5 shows the large ice cream bowl and as you can readily see a bee, is present but the urn has no beading. The top of the urn does not flair and has a plain banding around the top. Again we find Peacock and Urn in berry set sets, ice cream sets, a 10" chop plate (photo #6) and a large compote shown in photo #7.



This compote shape is actually a variant in that the urn has 2 rows of beading and a cable around the top, however the rest of the design conforms to the standard Peacock and Urn design. Colors are marigold, amethyst, green and rarely blue, with vaseline a strong possibility. In addition to the compote variant, there are two additional ones. The first shown in photo #8 is called the "mystery" bowl. It measures 8 3/4, has a bee and two rows of beads on the urn. Colors I have seen are amethyst and marigold, but green has been reported. This bowl was once felt to be a Fenton product, but it is Millersburg all the way.



The last variant is shown in photo #9. It is a shallow ice cream shaped bowl measuring 6 1/2. It has a bee and three rows of beads on the urn. In composition it is much like the "mystery" bowl with the floral design quite similar. The only color reported is amethyst, but I would bet others exist including blue.



Please remember the Millersburg Peacock patterns all have certain similar properties including a wide panel exterior, many rayed or rayed star bases and the usual Millersburg characteristics of clear glass, excellent mold detail and soft watery coloring.

Both Peacock and Peacock and Um are found primarily in radium finish but rich satin finish items exist in both. Radium finish items have iridescence on the interior only while satin pieces may have exterior luster as well.

In addition most Peacock pieces are scarce to very rare and all are desirable so never hesitate to add one to your collection. You will be glad you did.

Note: I realize there will be a couple of these pictures that you will not be able to see the pattern on but to show you the shape of the bowl is also important to these articles as well.

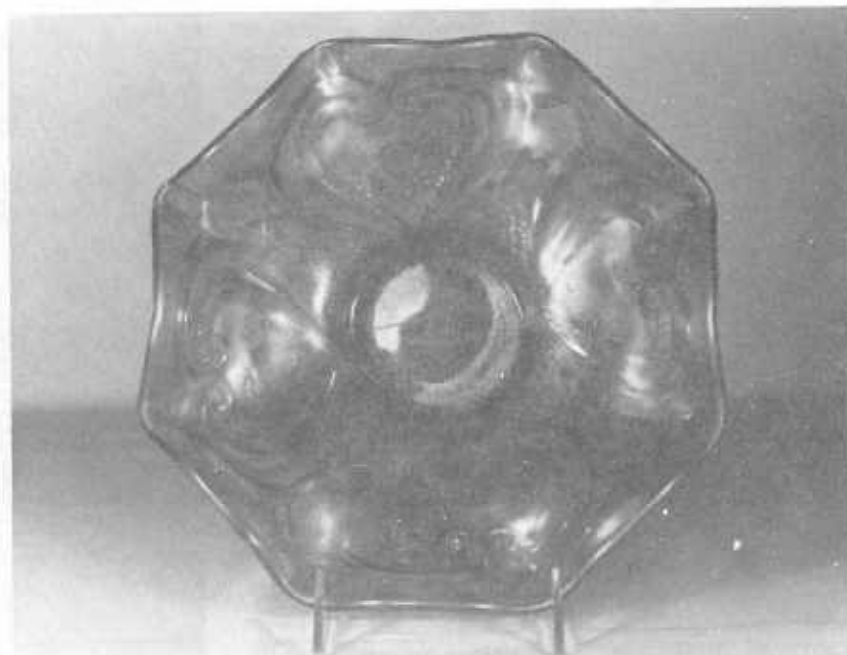
Editor

WELCOME NEW MEMBERS

M/M Frank Kirk, Nottingham, England
M/M John Jamison, Fontana, Ks
M/M Robert Blake, West Des Moines, Ia
M/M Fred Ishmael Sr., Port Byron, Ill
M/M Richard Dial, Morro Bay, Ca
M/M Rick Doyle, Jacksonville, Ill
M/M Ralph Berryman, New Albany, Ind

Carnival Cameos

BY DONALD MOORE



VALENTINE (NORTHWOOD) - Mrs. Hartung refers to this pattern in her Northwood Pattern book on Clear, Colored, Custard and Carnival glass. In 1969, when this book was written, she had seen this Valentine pattern only on clear glass. Mrs. Presznick calls this pattern "Northwood Hearts and Stars." The 9½" bowl shown here is marigold and carries the Northwood signature. This is the only one I have seen, but at least two others have been reported. The fact the pattern is all on the reverse side makes it a difficult piece to display and adversely effects its value. Nevertheless, it is a rare bowl, and I'm sure pattern buffs would pay around \$150 to own one.

IT IS THERE IF YOU ARE LUCKY



Enclosed are a couple of pictures of items that I have purchased at a flea market in Greensboro, North Carolina, one last year, the other this year.

The epergne is Wishbone, in ICE GREEN, the tumbler is Vintage Banded in marigold.

Thought maybe you would want to picture these in the bulletin.

Hope to make it to the convention next year. We also enjoy the bulletin. Keep up the good work.

Bill Rudd
Reidsville, N. C.

AUCTION RESULTS

Listed below are some of the auction results of Tom Burns auction held in New Philadelphia, Oh Friday & Saturday November 19-20, 1982. Thanks to John & Lucile Britt for furnishing this information to us.

Many Fruits punch bowl & base P 325	Bo Peep mug M 130
Ivy Town Pump P 340	N Dandelion mug P 180
Fantons 9 1/2 Rose Tree bowl B 175	Heron mug P 220
Beaded Cable ftd rose bowl AO 220	Strawberry bon bon 2 handled 50
Wisteria tumbler IB 325	Stippled Rays bowl Amberina 50
Stippled Strawberry tumbler IM 120	Brooklyn Bridge bowl M 260
Stag & Holly giant rose bowl M 180	N Holiday tray M 120
Peter Rabbit bowl G 450	Late Strawberry spittoon Lt M 130
Wild Rose ftd bowl CEL Blue 425	N Wishbone tumbler M 100
Field Thistle ped creamer Cel blue 100	Strawberry Scroll M 135
Peacock bowl N AQO 475	Bars & Stars wine M 325
Thumbprint compote IG 130	N G/C punch cup M 12
Formal Jack in Pulpit vase M 160	474 punch cup M 17.50
Holly 9" bowl R 400	Star Medallion punch cup M 12.50
Cosmos & Cane ladies spittoon HA 650	N Peacock at Ftn punch cup W 65
Banded Drape dec water pitcher 3 tumb G 550	Fashion punch cup M 12.50
Atlantic City Elks bowl B 300	Millersburg Hobstar & Feather M 15
Ill Soldiers & Sailors plate B 725	Millersburg Multie Frutis & Flowers A 30
Millersburg Ct House bowl A 425	S Repeat punch cup P 20
Good Luck bowl M 375	Imperial Grape punch cup G 50
G/C candlelamp P 575	Amyrillis compote P 100
N Bushel Basket AO 200	Stippled Rays round bowl Amberina 85
Millersburg 9" Peacock at Urn bowl B 600	Diamond Lace tumbler P 40
Millersburg Holly Sprig sauce 5 1/2 A 125	Heavy Iris tumbler P 50.50
Millersburg Hanging Cherries compote A 725	Apple Tree tumbler M 30
Millersburg Rose Column base G 700	Beaded Shell tumbler M 70
Grape Leaves 9 1/2 ruffled bowl M 80	Millersburg Tracery 2 handled bon bon G 165
Millersburg Leaf & Little Flowers Min compote M 150	Millersburg Night Star 2 handled bon bon G 200
Millersburg Wild Flower compote A 550	Millersburg Multi Fruits & Flowers punch set M 525
Millersburg Hobnail spittoon M 600	Millersburg 9" Trout & Fly bowl G 340
Millersburg Peacock proff sauce M 255	Jeweled Heart tumbler M chip 20
Millersburg Tracery 2 handled bon bon G 165	Millersburg Little Stars ruffled bowl M 200
Millersburg Night Star 2 handled bon bon G 200	Millersburg Deep Grape square top compote A 700
Millersburg Multi Fruits & Flowers punch set M 525	Millersburg Diving Dolphins compote A 800
Millersburg 9" Trout & Fly bowl G 340	N G/C sweetmeat whimsey P 150
Millersburg Little Stars ruffled bowl M 200	Cosmos & Cane HAMB 50
Millersburg Deep Grape square top compote A 700	
Millersburg Diving Dolphins compote A 800	
N G/C sweetmeat whimsey P 150	

LAST CARNIVAL AUCTION

Tom Burns auction list came for New Philadelphia, Ohio November 20th saying last one for the year so that was enough to start us wishing for reasonable weather as November temperature can be somewhat unpredictable.

We were up early to get a fast start on Thursday 18th as we wanted an extra day for brief visits with relatives at Canton-also our last visit for the year unless an emergency should come up.

It was a bit rainy at times but we did not even think of complaining as we had been praying for no snow or ice. We never asked for it not to rain. We had a nice visit with the relatives and settled down at the motel early. We had a good chance to visit Marion Hills carnival room so enjoyed a long talk with her. She does have some lovely carnival for sale.

We were up early again on Friday to drive over to Millersburg which is not very far away. We even had a nice breakfast there. On the way we stopped at the Amish Orchard for apples, nuts and candies. At a cheese shop we had a time to decide which cheeses to buy as they have such a large selection. The bakery in Millersburg too is always irresistible as they have the most tempting goodies one can not leave without. We had arranged to meet Raymond and Betty Heeley of Painesville, Ohio at the well known Dutch Valley Restaurant for lunch so we enjoyed a delightful hour or so with them.

We all hurried back to the motel to see the preview. Everyone always counts the minutes until the doors open. It is a thrill every time to go by and see the items you have sort of selected on the brochure as something you feel might be interesting. Of course one gets side tracked talking to the nice people so you hardly know which is more important as you try to do both at once. Also you must remember to pick out a favorite seat as you know that's where you will be for several long hours.

The sale seemed to go well enough considering the economy is not so great right now. Someone always wanted what ever was up for sale. The Cleveland Centennial tray was highest item at \$1000. The Millersburg Diving Dolphins compote was next at \$800. A note of sadness was felt by everyone as it was announced about Francis Heatons death on the Saturday before. We were all grieved to know he would no longer be with us at the conventions. Our hearts go out to Rovene as she must go on alone. It seemed even worse just now as in less than two weeks they were to celebrate their 50th wedding anniversary. Invitations had been sent out and their four children had made plans for a big party at their church.

Must mention after the gloomy like day on Thursday we had the prettiest fall

day on Friday anyone could ever hope for-but then on Saturday we awakened to the rains again which never ended all day. We decided to leave the sale at 1 PM for fear of a cold spell catching us up north. It rained all the way home but we said not one complaint we were plain thankful for the privilege of attending another auction before winter settles us down. We saw so many nice friends so its more than an auction really. A carnival reunion maybe on the side. A nice surprise too when Byron's sister and niece joined us there. We are trying to show them what a great hobby our carnival is. It is probably good not to know their comments after they left yet we felt they did enjoy it same as we all did.

Tom announced some auctions for next year in March or April so we shall keep that consoling thought uppermost in our minds while we look forward to 1983. We have heard of several rare items being found in 1982 so maybe there are more out there waiting. A good way to end the year is with HOPE.

Grace & Byron Rinehart
Charleston, W. Va.

LONDON ANYONE?

I decided possibly some of you might like to hear a little about this American experiences in the United Kingdom. Ray Notley had graciously ask me to come to London to see his collection and meet some of the U.K. collectors. Having a weeks vacation in November, I decided I would take him up on the offer. My trip did start out as a disaster as my flight was over booked and I and about 20 other people were left standing at the gate as the flight winged its way off to London. By the way this was in Dallas, Texas. You have heard of a guest being late for dinner, well 24 hours is just a little bit too late. But I guess 24 hours is better than not at all. That day was spent looking at Rays fine collection and talking carnival (what else)? It is hard to believe that there is that much carnival out side of the U.S. As you walk in the entrance hall you are greeted with all colors of bowls hanging there on the wall from the ceiling almost to the floor. In the living room all kinds of bowls line the walls to the ceiling. There are shelves on two sides of the room full of carnival and books. The study is full also. Most all of this glass in this room is English made carnival. So you can see we had lots of carnival to talk about. I kidded Ray all the time I was there that it was just not fair that I did not have a Brooklyn Bridge and he has six. He has several peach opal and some vaseline base with peach opal. Ray has collected for good iridescence and good patterns. Most all the glass you see over there is of good iridescence. What Ray tells me is that the people there did not

use it as we did here. They cherrished it as a fine piece of imported glass.

on Monday November 15, Ray had a special meeting of the United Kingdom Society to honor me. Carnival people are carnival people all over the world. They are just wonderful. People from all over England came. One had a four hour train ride another two hours. Ray served a wonderful buffet dinner to something like 13 or 15 people that evening. After dinner I did give a short talk on some slides that I had taken of some of the pieces from our collection. Everyone there was real enthusiastic in seeing pieces that they had only heard of. We all talked carnival that night until 2 AM or after. They really were interested in learning more about carnival.

The rest of the week was spent going to museums and antique markets. I did not find any carnival really to brag about at these markets and really I think I could say I did not see over a half dozen pieces. Of course as Ray said by being late on arriving I missed the big market on Saturday, that is the biggest one and you do some times find some real goodies there. I had great hopes of finding something like a Peter Rabbit, Morning Glory pitcher or even a Frolicking Bear. But if they are there they are still in there hiding place as I sure did not see them.

Thanks to Ray, I did not come home empty handed. He graciously gave me several English pieces that we seldom see here. A Moon Print creamer and sugar, and a real nice Fans pitcher.

I look forward to seeing Ray again in April. You know he will be our main speaker for the convention. His research on the English carnival is quite outstanding. It is certainly answering a lot of those unanswered questions, is it English or what?

Roland Kuhn
Kansas

Fellow Members:

I am curious about the carnival that was made on black amethyst glass. I have 3 pieces, one the "Peacock and Grape", when held to strong light looks as red as can be and not purple like the old black amethyst glass.

There has never been a price listed for black amethyst pieces. Could this have been an experimental color, you do not see it very often. I also have

a Northwood piece.

Hope some one can tell us about this.

Norma Wagner
Box 52
Bagley, Iowa 50026

Thought you might like a copy of the newspaper article on my carnival glass display at the Medicine Hat museum. I put in 125-30 pieces 3 large show case Divided into companies, Imperial, Fenton, Northwood, Dugan, Millersburg and English. As usual those reporters get some things mixed up but thats par for the course. Perhaps you could send the clipping on to who ever keeps the scrap book.

Betty Parrish
Canada

I would like to support the position of Ruth Schinestuhl regarding charging for advertising in the Bulletin. This policy will indoubtly decrease the number of members who utilize this service. It will also increase prices to at least cover the cost of the ad.

Like Ms. Schinestuhl, I first tum to the "For Sale" section. The educationa section is of next in inportance and the "Wanted" section is the last section I read.

J. C. McPherson
Augusta, Ga

Just a thought, double the dues but do not charge for ads.

Singleton Bailey
Loris, S C

The latest meeting of NCCC was held at the Stockton, Inn, October 17, 1982.

The business meeting was called to order by President Reo Nathan.

John Millbar conducted a Carnival Glass quiz pertaining to various historical events, companies, and people involved in the development of Carnival Glass.

Seven members participated in Show and Tell. This part of the program is quite interesting and informative.

Ed Garner spoke on the various shapes of Carnival Glass, especially Millersburg. He emphasized how the shape affects the value of a piece of Carnival Glass. Tri corners and square bowls are much more valuable as a rule, than the round, and are usually better irridized. Ed showed many examples of the various shapes during his discussion. It was an interesting presentation enjoyed by all.

The next meeting of NCCC will be held at the Sprengers in Berkeley, Ca.

The 1983 convention will be held at the Sierra Inn in Sacramento, Ca June 23, 24, and 25th 1983.

Thomas Darter Secy
NCCC

I read with interest the letter from Ruth Schinestuhl in the November issue of the Bulletin regarding the possibility of charging for listing for sale items listed in the bulletin. I wish to cast my vote with Ruth Schinestuhl. I, too, read the For Sale Section first. Then go back and read the remainder of the bulletin. Since I am unable to attend convention at this time, the For Sale Section is my means of a main link with other collectors in buying and selling. I fear this section of the bulletin would shrink to almost nothing if a charge is imposed.

Again, let me request that the club not make this decision. I am willing to pay higher dues if that would be of any help and feel that others would also do the same.

Thanks for permitting me to voice my opinion.

Burney Talley
New Mexico

The Tampa Bay Carnival Glass Club held its regular monthly meeting Sunday, November 21 at the home of Maria and Nick Vafiadis in Tarpon Springs. A delicious buffet at noon preceded the business meeting. Twenty members attended and we were happy to welcome the return for the winter of Lily and Eddie Laman, Florence and Phil Graham, Margaret and Glen Austin.

A resolution was adopted noting the sad passing of club member Francis Heaton and of our sympathy for the members of the family. President Smith appointed a nominating committee of Shirley Conyers, Chairman, and Ruby Pitt and Lily Laman to report at the December meeting.

Further plans were discussed for the second Lose Your Heart To Carnival Glass Jamboree to be held February 11 and 12, 1983 at Lakeland, Fl. A brochure will be mailed to carnival glass enthusiasts within a limited area. However, with the low hotel rates available many from distances may want to work this in with a winter holiday. Full information may be obtained from Art Smith, 453 Holder Ct., Lakeland, Fl 33803 or phone 813-644-4058.

A white elephant sale netted the club \$39. Art conducted a brief discussion on the story of Millersburg glass and pieces were shown. The annual Christmas party will be held December 19 with Shirley and Tiny Conyers at Madeira Beach.

Arthur Smith
Florida

The Air Capital Carnival Glass Club met at the home of Betty and Don Greb for our November meeting. Due to President Kuhn off to London for a weeks vacation our Vice President Betty Greb conducted the meeting. We discussed our convention which we had in October. A nominating committee was formed as our December meeting will be our Christmas covered dish supper and election of officers for the new year 1983. Wirmie Brim will host our meeting this year. Plans will be made for our 1983 Mini Convention and our committees will be selected at this meeting. While we were having our meeting we were surprised when we got a call from London, from our President Roland Kuhn.

Donald E. Kime
Secretary

OLD CARNIVAL GLASS LIBRARY

CARNIVAL GLASS RARITEIS-A color line approach. Lists the top 10 rarities in each color-plus complete rarities price guide-40 pages of black and white pictures-special section on whimsys-\$8.50 pp. Also THE SHAPE OF THINGS IN CARNIVAL GLASS, 110 pages, 200 items in full color-\$9.95-Donald Moore, 2101 Shoreline Drive, Apt 462, Alameda, Ca 94501

CARNIVAL GLASS SERIES, each book has 100 different patterns illustrated and described-10 books in the series, books 1,2 and 3-\$3.00 ea, books 4 thru 10-\$3.50 ea. New edition 1981-82 price guide-\$5.00 pp, Northwood Pattern Glass-clear, colored, custard and carnival-\$9.95 plus 50¢ postage. Marion T. Hartung, Box 69, Emporia, Kansas 66801

CARNIVAL IN LIGHTS-A full color book on Carnival Lighting, including Gone With The Wind Lamps, Candle Lamps and shades-price guide included-\$11.95 plus postage, Helen Greguire, 103 Trimmer Road, Hilton, New York 14468

CARNIVAL GLASS TUMBLERS-Author Richard Owens-order from Mr. Don Brown, Wallace-Homestead Book Company, 1912 Grand Ave., Des Moines, Iowa 50303

IMPERIAL CARNIVAL GLASS-THE EARLY YEARS-\$9.95, FENTON CARNIVAL GLASS-THE EARLY YEARS-\$9.95, New price guide 1981-82 edition-\$3.95-MILLERSBURG THE QUEEN OF CARNIVAL GLASS-\$8.95, RARITIES IN CARNIVAL GLASS-\$8.95, THE STANDARD ENCY. OF CARNIVAL GLASS-650 different full color patterns photographed, 223 page hardbound illustrates and evaluates Dugan, Fenton, Imperial, Millersburg, Northwood, Minor American, English Carnival, and more-\$24.95. "Northwood, King of Carnival Glass-\$9.95, Bill Edwards Author, Collectors Books, Paducah, Kentucky.

CARNIVAL GLASS PRICE GUIDE-Sherman Hand - Charlotte Williams-\$5.95 pp. Order from Sherman Hand, 127 Olympic Circle, Vacaville, Ca 95240 or Charlotte Williams, 630 N Lower Sacramento Rd., Lodi, Ca 95240

FENTON GLASS-THE FIRST 25 YEARS- 144 pages, 72 in full color, more than 400 items pictured in Fenton's carnival and iridescent "stretch" colors, rare catalogue reprints (some in color), a complete history of the factory's early years, from 1907 to 1932, \$15.95 for softcover edition with price guide, \$20.00 for limited edition hardbounds. Order from the author, William Heacock, P O Box 27037, Columbus, Ohio 43227.

Angela Hallam's 52 page fully illustrated paperback-first book to tell about the English-made Carnival-\$4.85 surface postage, air mailed \$5.85. Order from Wise Books, 82 Chart Lane, Reigate, England, RH2 7EA

CARNIVAL GLASS AUCTION PRICE REPORT-A list comprised of 2400 sale prices of Carnival that sold between June 1979 and April 1982. Patterns by Hartung name and the information includes date sold, price and auctioneers name for easy reference-Single copy price for 8 1/2" X 7" list \$8.00 pp-Quantity and club discounts available. Al & Wendy Rettke, 14226 East 143rd Lane, Burnsville, Minn 55337.

OTHER REFERENCE MATERIAL

Presznick's "Encyclopedia of New Carnival and Iridescent Glass". A great reference book with color plates galore and prices, \$19.95. Reichel's "Modern Carnival Glass." 100 illustrated pages of Carnival made since the 1960's. Volume 1, \$4.00, Volume 2, \$4.95, Price Guide for both volumes \$2.50. Add \$2.00 for shipping and insurance. Theodore A. Parent, Box 596, RD 1, Canfield, Ohio. 44406

"Encore by Dorothy" books 1 and 2. A series of books on new reproduced Carnival Glass, giving information on the patterns and colors that are being reproduced. An invaluable asset to the old carnival collector, possibly saving him many dollars by knowing what has been reproduced. Price for each book is \$7.70 postage paid. Be sure to state which book you want. Dorothy Taylor, Box 11734, Kansas City, Missouri, 64138

FOR SALE

Burney Talley, 1814 Slate N W, Albuquerque, N M 87104 PH 505-242-1261 eve

A EI	Fine Cut & Roses candy dish	25
M EI	Pine Cone unruffled sauce	20
G EI	Pansy Spray 9" bowl	45
A EI	Scales 5 3/4 bowl	22.50
M EI	Pansy Spray dresser tray	45
M EI	Sialboats compote scarce	45
P EI	Kingfisher large bowl	125
P EI	Australian Swan large bowl	125
EI	Ice Crystals master salt pastel	45
G EI	Imperial Grape 9" bowl	35

Ray Hitchcock, RR 1 Box 301, Winterset, Ia 50273 PH 515-462-2074

A EI	G/C tumblers N 6 ea 32.50 all	175
M GE	Pt & 1/2 Golden Wedding bottles w/orig labels & caps state of Iowa seals Ea	25
B EI	Grape Delight rose bowl	65
B EI	Vintage nut dish	60
P EI	G/C punch base N	25

Arthur Boruchi, 3317 W Maple Rd, Birmingham, Mi 48010 PH 313-647-0825

M EI	Pony bowl	65
G EI	G/C 9" ruffled bowl basketweave outer pattern (N)	70
M EI	Lotus & Grape ftd bowl 6"	45
G EI	Imperial Grape punch cup	20
M GI	Golden Wedding pt bottle	15
C EI	Tomahawk, chip on front edge	625
M EI	Orange Tree butter bottom ftd	40
G EI	Loganberry vase helios	160

M. E. Hill, Box 10157, Bradenton, Fl 33507 PH 813-756-2702

P EI	Farm Yard 10 1/2" plate	8500
A EI	Peacock spitton Millersburg	6500
V EI	Acorn compote	3100
V EI	Night Stars card tray 1 known	1950
B EI	Vintage Grape bowl Hobnail back 1 known	3300
B EI	Hobnail pitcher & 1 tumbler	2350
G EI	Pipe humidor scarce	3250
G EI	Deep Grape compote square top	1200
B EI	Hanging Cherries 5" sauce rffled edge satin	750

Send SASE for complete list

Mary Herren, 520 S Berry, Morganfield, Ky 42437 PH 502-389-3121

M EI	Heavy Iris pitcher	250
P EI	Imperial Grape carafe	110
B GI	Orange Tree large ftd orange bowl	85
M EI	Orange Tree mug regular	10
AO EI	Four Columns vase two sm base chips	45
M EI	Triplets 7" fluted deep dish	10
PO EI	Starfish compote deep straw mark	20
M EI	Peach & Pear banana bowl sm base chip	50
M EI	Imperial Grape 10" bowl	18

Charles Perry, 8641 Lakeshore Drive, Southaven, Ms 38671 PH 601-342-1694

W EI	Orange Tree breakfast sugar	35
W EI	Zig Zag enameled pitcher rare	75
A EI	Millersburg Peacock Tail varient compote	55
P EI	Lustre Rose spooner	30
B EI	Poppy pickle dish Northwood's elect blue	60
M EI	Butterfly & Berry covered sugar	40
M EI	Beauty bud vase	12
G EI	Poinsettia milk pitcher rare color chip	35
M EI	Kittens cereal bowl	75
M EI	Orange Tree mug	18

George Loescher, 2420 Park Ave, Beloit, Wi 53511 PH 608-362-3104

PO EI Little Beads compote	45
Amb EI Open Rose 8 1/2 bowl	35
M EI Peacock & Grape ftd bowl	30
G EI Millersburg Grape Wreath 5 1/2 E36 bowl	37
PO EI Four Flowers 6 1/2 plate plain back	95
M EI Millersburg Blackberry Wreath 10" bowl leaves are gold experimental	55
G EI Millersburg Holly Whirl bowl	65
M EI Millersburg Holly Whirl bowl	50
M EI Flute salt 3" across top	38
G EI Millersburg Tracery bon bon sm nick	175

Don Mays, Rt 1 Box 333, Earlysville, Va 22936 PH 804-973-3941

B EI Butterfly & Fern water pitcher	325
P EI Fishermans mug	60
M EI Double stemmed rose dome ftd bowl	20
P EI Diamond Lace water pitcher	200

Omer Sweeney, 28 Esmond St, Esmond, R I 02917 PH 401-231-4108

M GI G/C 8 pc dresser set N	1135
M EI Millersburg Cherry 10" ice cream bowl	120
M EI Lion 5 3/4 bowl	105
M EI Horse Medallion nut bowl 3 ft	105
M EI 474 punch bowl set 7 pc	225
R EI Fenton Grape & Cable 7" bowl	375
R EI Blackberry Spray Fenton medium size basket	250
G EI Nesting Swan bowl	250
P EI G/C 4 pc table set Northwood	560
IB EI Peacock & Urn 10" ice cream bowl	400

Chris Klutts, 13 Del Rancho Ln, Shawnee, Ok 74801

B EI G/C punch cups 3 ea	25
M GI Grape & Gothic Arches water set 7 pc	275

Mary Kesterson, 3020 Mesa Rd, Willow Park, Tx 76086 PH 817-441-8410

W EI Apple Blossom Twig plate 9"	125
M EI Bushel Basket round (N)	85
W EI Bushel basket 8 sided	105
B EI Prism Panels vase ftd 2	85
TB EI Hearts & Flowers bowl 8"	175
G EI Seacoast pin tray	325
P EI Peacock at Fountain pitcher	285
G EI Stag & Holly spat ftd bowl 8"	95
R EI G/C bowl 8" Fenton	420
P EI Dahlia table set 4 pc sugar top damage	545

Eva Backer, 12 Sherwood Rd, West Hartford, Ct 06117 PH 203-232-1027

A EI G/C ice cream sherbet (N)	35
G EI Leaf & Beads rose bowl int pattern	65
G EI Heavy Grape plate 7"	60
A EI Acorn Burr tumbler (N)	55
G EI Singing Birds berry bowls 5 1 flake on one free ea	35
M EI Kittens saucer no harm wear spot	55
A Top Of The Morning hat pin 9 1/2	35
B EI Cherry Circles bon bon ruffled Orange Tree ext 5 3/4	28
M EI Wide Panel cake plate 15" Hand pg 209	40
A EI Maple Leaf ice cream sherbet stemmed 2 ea	28

Harm Westerhuis, RR 1 Box 31, Platte S D 57369 PH 605-337-3631

M EI Imperial Grape punch bowl, base 4 cups 1 damaged	150
M GI Stork & Rushes punch bowl & 6 cups no base	100
P EI G/C (N) banana bowl	150
M EI Wreath of Roses punch bowl & base Persian Med int	225
M EI G/C butter dish top (N)	45
G EI ?C butter dish top (N)	60

Patricia Craver, Box 8015, Allandale, Fl 32023 PH 904-788-5315

M EI	Oval & Round bowl	12
A EI	Pony bowl sm rim chip	100
G EI	Imperial Grape wine decanter no stopper	20
M EI	Soda Gold pitcher tiny base flake	100
M EI	Heavy Grape 8" plate int ware	20
B EI	Lustre Rose fernery 2 ea	50
B EI	Butterfly & Berry vase	35
M EI	English covered hen 3 ea	40
G EI	Heavy Grape 8" plate sm base nicks	25
P EI	Flute sherbets (N) 2 ea	20

LaVern White, Box 311, Grafton, Ia 50440 PH 515-748-2923 aft 6

B EI	Peacock & Urn 5 1/2 ice cream dish (N)	55
B EI	Little Fishes 9" ftd bowl	140
M GI	Orange Tree powder jar	65
M EI	Crackle 7 pc ftd water set	140
W EI	Persian Medallion rose bowl	90
M EI	Peach & Pear banana bowl	55
M EI	Two Flowers ftd bowl	45

Edward Henderson, 1111 N College, Stuttgart, Ar 72160

M EI	Diamond jelly compote sm chip rim	10
M EI	Rib jelly compote	12.50
M EI	Star & File compote	60
M EI	Daisy & Fern nappy	20
M EI	G/C nappy	40
A EI	Crackle finish 9 1/2 plate	40
M EI	Imperial Grape 9" plate sm chip	20
M EI	Fashion Imperial punch bowl base	45
A EI	Persian Medallion relish sauce 4 ea 2 ex 2 fine crack	20
M EI	Northern Star relish sauce	20

Earl Lindquist, Box 165, Clarkfield, Min 56223 PH 612-669-7361

M EI	Heart & Flowers compote	65
DM EI	Nu-Art shades signed 2 ea	25
PO EI	Double Stem Rose dome ftd bowl 8"	65
M GI	Horse Heads rose bowl rough spot on mold	65
G EI	Good Luck flat bowl pie crust edge 9"	98
PO EI	Three ftd crimped cherry bowl 7"	55
PO EI	Ski Star dome ftd 8" pie crust edge bowl	75
PO EI	Ruffled hat shpae vase 4 1/2	20
PO EI	Caroline Handled basket	295
P EI	Blossom time compote N	125

Al Sebaugh, 9116 Fort Donelson, St. Louis, Mo 63123 PH 314-843-6122

A EI	G/C dresser tray large	200
W EI	H.O.A.C.G.A. 1980 hat pin holder 19 made	225
R EI	H.O.A.C.G.A. whiskey decanter 5 shot glasses	225
IG EI	H.O.A.C.G.A. 1980 whimsey	235
R EI	H.O.A.C.G.A. 1978 whimsey	335
R EI	H.O.A.C.G.A. 1979 whimsey	300
B EI	Orange Tree punch bowl & base 6 cups	365
A EI	Diamond Lace water set 3 tumblers	295
DM EI	Stag & Holly large rose bowl 7" rare	250
DM EI	Grape Arbor tankard & 6 tumblers	375

J. Vokral, 439 Grande Cote, St. Eustache, P Q PH 514-473-4203

G EI	Thistle banana bowl	170
AMB EI	Thistle banana	170
IG EI	Crackle plate	35
M EI	Butterfly & Tulip square ftd bowl	300
M EI	Corinthian banana dish	40
P EI	Peacock at Fountain butter	150
P EI	Peacock at Fountain spooner	70
P EI	Peacock at Fountain covered sugar	80
P EI	Small berry dish 5"	30
W EI	Small berry dish 5"	38

Gil Corriveau, Box 5, Sturbridge, Ma 01566 PH 617-347-3304 days 617-347-9930 night

W EI	Fanciful flat plate	150
B EI	Poppy Show plate	300
P EI	Acorn Burr punch cups 6 ea	35
AO EI	Drapery rose bowl	200
P EI	Beaded Cable rose bowl	45
M EI	Orange Tree punch bowl & base	85
P EI	Star of David embossed bowl	45
M EI	Garland rose bowl	35
M EI	G/C center piece bowl	150
P EI	G/C brakfast creamer	60

Dick Wetherbee, 847 Stafford St., Rochdale, Ma 01542 PH 617-892-4420 afer 6

W EI	Leaf Ray tri corner nappy	30
M EI	Vintage compote	32
AO EI	G/C Variient (N) punch cup straw mark	225
B EI	Blackberry Spray ruffled edge hat	30
G EI	April Showers 11" vase w/Peacock Tails inside	28
B EI	Open Lace basketweave Fenton 6" bowl 2 sides up	28
W EI	Acorn Burr punch cups 5 ea 47.50 all	200
PO EI	Raindrops 9" bowl candy ribbon edge	70
G EI	Vintage 3 ftd femery minor roughness on grapes	18
PO EI	Six Petals 8" Tricomer bowl	65

Dick Hatscher, Box 261, Walnut Hill Rd, Bethel, Ct 06801 PH 203-743-1468

M EI	Brooklyn Bridge bowl	185
M GI	Rare Twon Pump	425
M EI	Many Stars bowl rare 9 1/2	225
M EI	Butterfly & Tulip ftd bowl	150
P EI	G/C candle lamp	545
P EI	Peacock at Um lg ice cream bowl (N)	160
P	Heron mug silvery	165
AO EI	Fruits & Flowers 2 handled compote	325
AO EI	Bushel basket round	185
S EI	Poinsettia milk pitcher	115

G EI	Ten Mums bowl	80
A EI	Ten Mums bowl	80
G EI	Stippled G/C plate	110
PM EI	Millersburg Whirling Leaves bowl	60
G EI	Raspberry water pitcher	175
M EI	Golden Harvest decanter	150
P EI	Imperial Grape wine	35
G EI	Imperial Grape wine	30
B EI	Fenton Peacock & Urn bowl	75
M EI	Rising Sun pitcher pedestal	1200

Donna Embree, 3315 E. Pershing, Rd, Lincoln, Ne 68502 PH 402-423-2096

A EI	Thistle bowl 9" irid on underside only	32
W EI	Fanciful bowl 9"	70
AO EI	N Basket	245
M EI	Peacock at Um Fenton bowl	45
PO EI	Petal & Fan 6" bowl	40
S EI	Frosted Block plate chip on collar base 7"	17.50
A EI	Three Fruits bowl spat ftd one flute chiped	19
G EI	Wild Rose Open Heart 7" bowl chip under hearts	19
A EI	Greek Key bowl piece off of edge	17

Don Doyle, 2416 Ashland Ave, Rockford, Il 61103

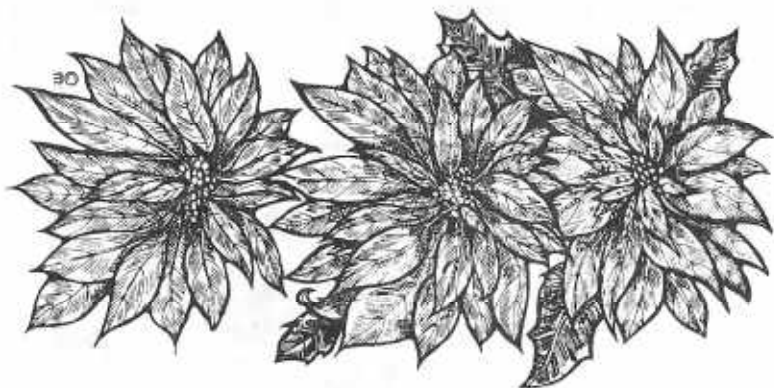
P EI	Iris compote	45
DM EI	Pinwheel vase 8" Edwards Millersburg bk p 59	45
M GI	Swirl mug	35
M EI	Colonial parfait mug	25
M GI	Flute & Diamond vase 6" scarce	25
DP EI	Magpie sauce	30

Richard Petersen, Box 62, Clarkfield, Mn 56223, PH612-669-7350

A EI	Grape Leaves N candy ribbon edge	60
B GI	Vintage Fernery 1/4 rust stain	35
M EI	Soda Gold candle stick	15
PO EI	Fan Occasional piece	55
M GI	Colonial candlesticks pr	65
M EI	Golden Harvest wine	20
M EI	Violet basket hat shape insert	15
M EI	Target 10" vase	10

Bernie Mahn, 1001 Rock Rd, De Soto, Mo 63020 PH 314-586-6226

A EI	Beaded Shell mug	95
M EI	Crab Claw pitcher scarce	295
M EI	Acorn Burrs (N) 6 pc berry set	350
M EI	Peacock at Fountain (N) sugar lid	25
P EI	Fine Rib (N) 7 pc berry set	200
M EI	G/C (N) spooner	70
M EI	G/C (N) covered sugar	80
M EI	Blackberry Spray hat	35
M EI	G/C (N) hatpin holder sm flake on inside foot	185
G EI	Peacock Tail 4" bowl	35



WANTS

Arthur Boruchi, 3317 W Maple Rd, Birmingham, Mi 48010 PH 313-647-0825

A Imperial Grape wine decanter stopper

Ray Hitchcock, RRI Box 301, Winterset, Ia 50273 PH 515-462-2074

DM Many Fruits punch base prefer ruffled

M Many Fruits punch cups

G Panelled Dandelion tumblers

P Diamond Lace tumblers

Burney Talley, 1814 Slate N W, Albuquerque, N M 87104 PH 505-242-1261 eve

G Fieldflower tumblers will consider minor damage

P Singing Birds tumbler 1

P Fieldflower tumblers

A Fieldflower tumblers

AMB Fieldflower tumblers will consider minor damage

Judith Miller, 292 Carroll Close, Tarrytown, N Y 10591 PH 914-631-5092 eve

P Louisa rose bowl

B Louisa rose bowl

G Louisa rose bowl

G Daisy & Plume rose bowl

M Beaded Cable rose bowl

P Garland rose bowl

G Garland rose bowl

B Garland rose bowl

CM Frosted Block rose bowl

Charles Perry, 8641 Lakeshore Dr, Southhaven, Ms 38671 PH 601-342-1694

P Butterfly & Berry butter top only
M Stork & Rushes butter base only

Mary Herron, 520 S Berry, Morganfield, Ky 42437 PH 502-389-3121

IG Zig Zag pitcher
W Floral & Grape pitcher

Chris Klutts, 13 Del Rancho Ln, Shawnee, Ok 74801

G G/C cologne bottle
G G/C perfume bottle
P G/C pin tray

Omer Sweeney, 28 Esmond St, Esmond, R I 02917 PH 401-231-4108

B Peacock at Fountain butter bottom
M G/C sugar bottom
P Beaded Shell sugar bottom
G Wreath of Roses with Vintage int 3 punch cups
M 474 punch cup

J. Vokral, 739 Grande Cote, St. Eustache, P Q J7P LH9 PH 514-473-4203

M Peacock at Fountain bottom to butter dish
B Wreath of Roses punch cups Persian Med inside

Wesley Strain, 832 Carson Rd, Ferguson, Mo 63135 PH 314-524-5608

W G/C cracker jar lid

40

LaVern White, Box 311, Grafton, Ia 50440 PH 515-748-2923 after 6

P Wreathed Cherry tumblers 3
IB Concave Diamond pitcher only
IB Peacock & Um 5 1/2 ice cream dish (N)
W Peacock & Um 5 1/2 ice cream dish (N)
IG Peacock & Um 11" ice cream bowl (N)

Patricia Craver, Box 8015, Allandale, Fl 32023 PH 904-788-5315

W Peacock at Fountain punch base
P Acorn Burr butter top
M Butterfly & Berry butter top
M Peacock at Fountain butter bottom
G Grape & Gothic Arches butter top
G Grape & Gothic Arches spocner

Eva Backer, 12 Sherwood Rd, West Hartford, Ct 06117 PH 203-232-1027

S Imperial Star of David bowl
W Orange Tree punch base
A Imperial Grape stopper
G Star of David & Bows bowl (N)

Richard Petersen, Box 62, Clarkfield, Mn 56223 PH 612-669-7350

G Wreath of Roses with golden irrid punch cups Vintage Int
P Peacock at Fountain covered sugar with or without cover

Tom McCrohan, 30 Marshall Ave, Nth Claxton 3168, Australia

PO N Fan gravy boat
IM Lion bowl
Louisa any color
Grape Delight any color
Grape Delight nut bowl
Birds & Cherries compote or bon bon any color

41

BULLETIN INDEX

Mr. John Stewart, of Weymouth, Mass has put together a fine Bulletin Index which we think you will all find very useful and will save you many hours of looking for material in the back bulletins. I would like to thank John for all of this work and time he has taken to do this great service for all of us. I would like to print a few lines of his letter to us.

For too long now I have been mulling over trying to find some method of re-paying the H.O.A.C.G.A. for their long standing and increasing contributions to the Carnival Glass knowledge of all their membership as well as the entire hobby.

Everything has been so excellently covered that it is very hard to come up with something appropriate to express my thanks.

Possibly the enclosed Index would serve the purpose but I will leave that entirely up to your fine judgement. I have looked over more than 100 issues to find this information and I would like to share it with you.

John Stewart
Weymouth, Mass

CARNIVAL GLASS--INDEX OF HOACGA BULLETINS (1973 THRU JULY 1982) BY PATTERN)
(no auction reports are included)

Information Items Only.	HOACGA Bulletin Issue Date
-------------------------	----------------------------------

Acorn Burrs-AO punch base	8-79
Acorn, Millersburg	6-81
Advertising Pieces-1-77, 2-77, 4-77,	4-81, 5-82, 7-82
Amaryllis	4-82
Amber pieces	4-79
Apple Blossom, enamelled	6-79, 8-79
Apple Tree	7-76, 10-76
Autumn Acorn	11-79
Aztec	5-81

Banded Diamonds	5-78, 1-79
Beaded Grapevine	2-79
Banded Portland	4-82
Beaded Shell	2-74
Big Fish	12-73, 7-81
Big Thistle	8-81
Birds & Cherries	9-74, 2-80
Blackberry	3-81
Blackberry Block	5-75, 12-73, 5-80, 10-81
Blocked Panels	4-79
Bo-Peep	2-74
Border Plants	9-81
Bushel Baskets	2-80
Butterfly	1-79
Butterfly & Berry	, 7-78, 10-78, 3-79 5-75
Butterfly & Fern (Plume)	3-82, 6-82
Butterfly Ornament	1-79
Carnival, why collect?	9-77
Carnival, new-signed N	10-77, 11-77
Carolina Dogwood	6-81
Chain & Stars	3-79, 4-82
Checkerboard	10-75, 11-78, 4-81
Cherries, Millersburg VT.	4-80, 10-81
Cherry & Cable	3-80
Childs Mug	3-78
Chrysanthemum	6-77
Circled Scroll	1-82
Clambroth	2-78
Classic Art	12-79, 3-82
Colonial Lady	12-79
Concave Diamonds	12-73
Constellation	2-80
Corn Vases	3-78
Cosmos & Cane	2-77
Country Kitchen (Potpourri)	11-81
Covered Hen	4-82, 5-82
Covered Swan	5-82, 6-82
Crab Claw	4-79
Crackle	10-80
Craquelle	10-80
Curved Star	11-80
Daisy Block	6-81, 5-82
Daisy & Drape	3-80
Daisy & Plume	3-81
Daisy Squares	3-80
Dandelion	2-74, 5-80
Dewberry	10-79
Diving Dolphins	5-82
Double Daisy	12-79
Double Star	7-78, 9-78
Dragon (not catalogued)	2-74
Dragon & Berry	2-74
Dragon & Lotus	12-73, 2-74, 12-74, 12-79
Drapery VT.	11-78, 4-79
Egyptian Queen	3-82
Elks	5-76
Embossed Scroll	11-80
Embroidered Mums	8-81
English Butter Dish	12-79
Estate	2-74, 12-78
Fans	3-79
Fashion	5-81
Feather & Heart	2-81
Feather Swirl	11-78
Fentons Baskets	4-80
Fenton Cherries	6-77
Fentons Fern	2-82
Fentons Flowers	10-81
Fentons Glassmaking, description	11-73
Fentonia	6-78
Fentonia Fruit	6-78
Field Flower	3-79
Field Thistle	12-77, 6-78, 11-78, 4-79
File	6-77, 4-79
Fishermans Mug	2-74, 8-77
Fleur-de-Lys	12-73
Floral & Grape	12-81, 1-82
Flute	9-81, 4-82
Flute & Cane	2-79, 2-82
Forget-Me-Not	12-79
Formal	7-78
Forty (Forty Niner)	11-78, 3-79
Four seventy four	4-74, 2-82, 7-82
Frolicking Bears	2-76, 11-80
Fruit Salad	7-79, 10-81
Gay Nineties	1-76, 10-78
God & Home	8-79
Goddess of Athena	1-79
Grape and Cable-Survey	1-76
G/C Centerniece	7-81
G/C Cookie Jar	2-76
G/C Fruit Bowl	7-79

Grape and Cable Basket	11-79	• Manhattan	11-78
G/C Lamps	2-81	• Many Fruits	12-79, 10-81
G/C Master Punch Set	1-81	• Milady	9-80
G/C Nabby	8-78	• Marilyn	8-78
G/C Pearl	7-81	• Mary Ann	7-81
G/C Plate	12-80	• Mayan, VT.	5-82
G/C Powder Jar	5-80	• Mayflower	7-82
G/C Blue Punch Set	4-80	• Mikado	4-82
G/C Spittoon	1-76	• Mirrored Lotus	10-80
G/C Table Sets	6-79	• Moon Print	7-80
G/C Whimsey	3-79	• Morning Glory	2-76, 6-79
Grape & Lattice	3-79	• Mugs	2-74, 5-76, 10-78
Grape Arbor	1-77, 7-79, 3-81	• Multi-Fruits & Flowers	1-80, 10-78, 6-82
Greek Key	4-81	• Near Cut	5-82
Handled Lemonade	3-79	• Near Cut goblet	5-78
Harvest Flower	8-73	• Near Cut Souvenir	7-78, 5-82
Heart & Horseshoe	1-82	• Near Cut Souvenir Mug	2-74, 5-82
Heart & Vine	1-82	• Near Cut tumbler	5-78
Heart Band	2-74	• Night Stars	6-80
Hearts & Flowers	12-73	• Nu-Art Homestead	10-76
Heavy Grape punch set	6-81	• Octagon	12-78, 10-80
Heavy Hobnail	6-82, 7-79	• Octagon VT.	12-78
Heavy Iris	6-79	• Ohio Star	7-79
Herringbone & Mums	1-78	• Oil Lamp	11-79
Heron	2-74	• Olympic compote	4-82
Hobnail	9-78, 2-79, 12-81	• Orange Peel	4-81
Hobstar Band	2-80, 4-80	• Orange Tree	2-74, 4-82
Hobstar & Feather	8-73, 2-77, 8-78, 1-82	• Orange Tree, footed	5-79
Hobstar & Fruit	6-77	• Orange Tree, loving cup	12-78
Holly Sprig (Whirl)	6-80, 2-82	• Orange Tree, mugs	2-74
Honeycomb & Hobstar	3-82	• Orange Tree, wines	4-79
Horses Heads	1-80, 1-82	• Palm Beach	11-78, 9-79, 3-80, 12-81
Ice Green Opalescent Pieces	7-81	• Panama wine	3-82
Imperial Glass Co. History	10-74	• Paneled Dandelion	3-82
Imperial Carnival Glass Era	11-74	• Paneled Thistle	5-79, 11-81
Imperial Grape goblets	7-82	• Peach pattern	12-80
Imperial Grape 9" plate	9-81	• Peacock & Dahlia	12-73
Interior Poinsettia	2-78	• Peacock & Grape	2-80
Inverted Feather	10-75, 5-78, 7-78, 9-80, 2-81	• Peacock & Urn	9-78
Inverted Strawberry	7-78, 6-81, 2-82	• Peacock at Fountain	2-76
Inverted Thistle	12-77, 7-78	• Peacocks, Millersburg	12-80
Ivy Town Pump	5-80	• Peacock Tail	6-77
Kittens	7-81	• Peoples Vase	4-77
Knights Templar	2-74	• Perfection	11-81
Lacy Dewdrop, Pearl	10-81	• Persian Medallion	9-81
Lamps & Shades Rarities	7-76, 3-80	• Pickle Castor	9-81
Late Thistle	12-77, 7-78	• Pineapple	7-82
Lattice & Grape	12-81	• Pin Trays	6-80
Leaf & Beads	9-78	• Pipe Humidor	6-80
Leaf Chain	4-80, 5-80, 8-81	• Pony plates	5-76
Leaf & Little Flowers	4-82	• Poppy Show lamps	8-79
Lily of the Valley	8-81	• Pretty Panels	12-79
Luster Rose & Variant	6-80, 7-80	• Primrose	9-80
		• Punch Bowl Candleholders	8-79
		• Punch Sets, List	9-78

Questions and Answers	4-75	• Table Lamn	8-76
Quill	1-75	• Tiger Lily	9-79
Radiance	12-79	• Ten Mums	1-81, 4-82
Ragged Robin	4-82	• Thistle, Carnival	11-79
Ranger, perfume	12-79	• Thistle, chop plate	10-75
Ranger, shot glass	1-81	• Three Row	11-80
Rarities in Aqua-Opal	8-76	• Thumbprint & Oval	12-79
Rarities, list	9-76, 10-76	• Tornado	10-79, 1-81
Rarities, Marigold	8-77	• Tree Bark	10-80
Rarities, Marigold tumblers	5-78	• Tree of Life	10-80
Rarities, Millersburg	12-81	• Tree Trunk	6-82
Rarities, pitchers	4-76	• Trout & Fly plate	2-76
Rarities, table sets	6-76	• Tulip	7-82
Rarities, tumblers	3-76	• Tumblers, painted	11-79
Raspberry	10-81	• Tumblers, Top 25	3-74
Red Carnival	3-77, 4-77	• Twins	6-80
Reproduced, list	4-75	• Two Flowers, red	2-81
Ribbed Ellipse	11-81	• Unlisted, Cambridge	6-82
Rising Sun	4-78, 11-78	• " Cordials	9-81
Robin mug	2-74	• " Creamer	3-79
Rosalind compote	7-77, 7-82	• " Pitcher	5-79, 7-79, 9-81
Rose Band	3-79	• " Punch cup	9-79
Rose Tree	4-82	• " Shot glasses	1-81
Rustic vase	1-80, 6-82	• " Tumblers	10-79, 7-81
		• " Vases	5-79
Sailboats	10-78	• Vases, list	4-77, 5-79
Scroll Embossed	5-82	• Venetian	10-81
Seaweed	2-79, 9-80	• Vintage	2-74, 6-77, 8-81
Shades and Lamps, rarities	7-76	• Vintage Banded mug	2-74
Shapes, unusual in pattern or color	1-82	• Waffle Block	6-77, 3-78
Singing Birds mugs	2-74, 5-80	• Water Lily & Cattails	3-79
Ski Star, amethyst opalescent	12-79	• Water Sets, list	7-82
Ski Star plate	3-82	• Welch Paperweights, new	12-73
Small Thumbprints	1-79	• Western Thistle	12-77
Soda Gold	10-80	• Whirling Star	6-80
Souvenir Banded mug	2-74	• White Oak	6-80
Souvenirs of Carnival Clubs, list	4-79	• Wickerwork	3-82
Soutache	10-81	• Wide Panel, epergne	7-80
Spittoons, list	3-76, 5-76	• Wild Blackberry	11-81
Spittoons, Millersburg	12-77	• Wishbone	9-78, 1-80, 8-81, 1-82
Springtime	1-82	• Wisteria	3-81
Star & File	9-81	• Wreathed Cherry	6-81
Starflower	10-74, 1-75	• Wreath patterns of Millersburg	9-81
Star Medallion	10-79	• Zipper Stitch	9-81, 4-82
Stippled Rays	3-79		
Stork & Rushes	2-74		
Stork & Rushes, punch base	6-80		
Strawberry Scroll	8-81		
Stretch Glass	8-73		
Stretch tumblers	3-79		
Sunflower Diamond	5-81		
Super Sauces	4-82		
Sweetheart	2-80		
Sweetheart, cookie Jar	12-80		
Swirled Hobnail	7-81		
Sydney	7-81		

JOHN STEWART
99 ASTER CIRCLE
WEYMOUTH, MASS.
02188

