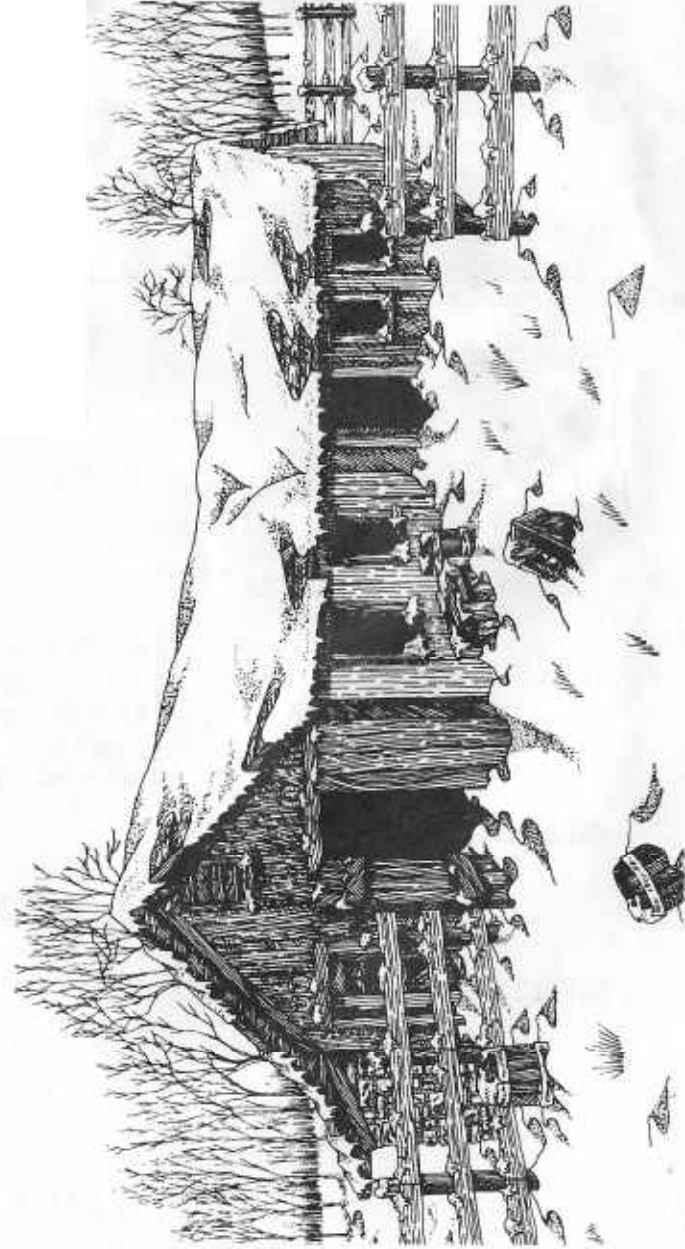


H. O. A. C. G. A.
DONALD E. KIME
BULLETIN SECRETARY
1202 W. 4th ST.
HAYSVILLE, KANSAS 67060



FIRST CLASS

February 1983
S M T W T F S
6 7 8 9 10 11 12
13 14 15 16 17 18 19
20 21 22 23 24 25 26
27 28





Heart of America Carnival Glass Association, INC.

MEMBERSHIP JUNE TO JUNE
\$10.00 PER COUPLE OR SINGLE

PUBLISHED 15th OF
EACH MONTH

PRESIDENT: GEORGE O. MCGREW JR.
6300 WOODWARD
OVERLAND PARK, KANSAS 66204
913-262-8822

VICE PRESIDENT: GEORGE BOLLES
5204 CATALINA
SHAWNEE MISSION, KANSAS 66205
913-432-5438

TREASURER: ELIZABETH BOLLES
5204 CATALINA
SHAWNEE MISSION, KANSAS 66205
913-432-5438

SECRETARY: DIANE TREFF
13646 LEAVENWORTH ROAD
KANSAS CITY, KANSAS 66109
913-721-2917

BULLETIN SECRETARY: DONALD E. KIME
1202 W 4th ST.
HAYSVILLE, KANSAS 67060
316-524-3123

JANUARY MONTHLY MEETING

On January 23, 1983, the monthly meeting of the H.O.A.C.G.A. was called to order at 2:00 P.M., by President George McGrew.

Minutes were read and were approved as read.

Elizabeth Bolles, Treasurer, gave the treasurers' report. Report being for the period dated November 26, 1982 through January 20, 1983. She stated that cash on hand as of November 26, 82 was \$13,122.15. Total receipts \$1475.86. Total disbursements were \$3034.18. Balance as of January 20, 1983 was \$11,563.83. This being comprised of a Mid*American NOW checking account of \$371.49 and a repurchase agreement of \$11,192.34 which is due February 2, 1983, and will be transferred to the NOW account at that time, Treasurers report accepted and placed on file.

President McGrew forwarded a report from Souvenir Chairman, Roland Kuhn. As of Friday, January 21, 1983 forty-three (43) Loving cup souvenirs have been sold.

Convention Chairman, Robert Grisson, reported again that the Holiday Inn will treat those reservations that arrive on the 1, 2, 3rd & 4th of February with priority. Mr. Grisson also announced that a schedule of the convention will appear in the next bulletin.

President McGrew announced that Al Retke has offered his services again this year as photographer of the convention. The club to pay for the film and the processing of the film. Members present accepted this offer.

Robert Grisson, reported that with the exception of 3 or 4 photos needed, the progress of the second series of the waterset inserts is right on schedule.

President McGrew, appointed Mike Basey as Chairman of the nominating committee. The committee is to select and find candidates for the five offices of the Board for the forthcoming year.

Secretary, Diane Treff, shared correspondence from some out-of-town members.

Diane Treff also reported that the club also received 5 new members during National Carnival Week.

A request was made by members present to have the entire letter from Mr. Fenton to Souvenir Chairman Cooley Miller, printed in its entirety in the bulletin. President McGrew to forward this request on to Bulletin Secretary, Donald Kime. With no further business, President McGrew adjourned the meeting.

The next meeting to be February 27, 1983 at 2:00 P.M., with the meeting site to be the Holiday Inn, Overland Park, Kansas.

1983 H.O.A.C.G.A. CONVENTION

The 1983 Convention will be held April 22, 23, and 24th, 1983 at the Mission-Overland Park Holiday Inn, 7240 West 63rd St., Overland Park, Kansas 66222. This is the same motel as previous conventions.

A motel reservation card was inclosed in your January bulletin. Reservations will only be made by the use of the card, no telephone reservations will be accepted. If you have not made your reservation yet, send in your card now....

In the January bulletin it was reported that Louis & Lois Bradford of Paducah, Kentucky, would have a program on Red Carnival. Louis had heart by-pass surgery the later part of December so he had to cancel out. We will try to schedule an alternate program that will be as equally informative.

The following is a complete convention schedule:

- Thursday - Registration - Holidome - 2:00 to 4:00 P.M.
April 21
- Hospitality Room - Holidome - 2:00 to 4:30 P.M.
- Reception - Santa Fe Room - 4:30 to 5:30 P.M.
- Meet our guest speaker, Ray Notley, and other special guests. Welcome by President.
- Pattern identification, panel discussion and questions - Gaslight Room - 7:00 P.M.
- Friday - Registration and Souvenir pick-up - Holidome
April 22 8:00 to 10:30 A.M.
- Display and discussion - Gaslight Room - 9:00 A.M.
- Display and Discussion Old and New carnival patterns - Santa Fe Room - 10:30 A.M.
- Dorothy Taylor will show and discuss differences between old and new patterns and explain the differences between the two.
- Registration and Souvenir pick-up - Holidome
12:00 to 1:30 P.M.

- Annual business meeting - Gaslight Room - 2:00 P.M.
Judging Room Display - 3:00 to 5:00 P.M.
Hospitality Room - Holidome - After business meeting
- Attitude adjustment period - Santa Fe Room
6:00 to 6:30 P.M.
- Banquet - Holidome - 6:30 P.M. cost \$15.00 per person

Award of Room Display winners
Speaker - Mr. Ray Notley will speak on English and Foreign-made carnival.

Auction of whimseys.

- Saturday - Registration and Souvenir pick-up - Holidome 8:00 to 9:00 A.M.
April 23
- Auction - Holidome - 9:30 A.M.
- Italian Night - Spaghetti Dinner - Holidome - 6:00 P.M.
Cost - \$8.00 per person.
- Entertainment starts after dinner.
Dancing 8:00 to 11:00 P.M.
- -SPECIAL SURPRISE- 7:30 P.M.
- Visit members room and make those last minute bargain buys.
- Sunday - Breakfast - 7:30 A.M. to 9:30 A.M. - Cost-Free
April 24
- Depart for home and another year of good remembrances of another enjoyable week-end spent at a H.O.A.C.G.A. Convention.

Dorothy Taylor will be presenting a program for us on identifying the difference between some of the old reproduced items. Dorothy needs some old pieces for comparison. If anyone has any of the pieces listed below and would be willing to bring them to the convention, for her use in the program, please let Dorothy know what you could help with. Write to : Dorothy Taylor, 7809

Arlington St., Raytown, Mo 64138 (Tel. 816-353-5722).

Farmyard	Millersburg Cherry sugar & creamer
Heavy Iris water set	Chrysanthemum plate
Rambler ROse water set	Daisy basket
474 water set	Field Flower water set
Checkerboard water set	God & Home water set
Floral Panel vase	Imperial Grape wine decanter
Homestead plate	Vintage Nut bowl
Pony bowl	Star & File wine decanter & glass
Sunflower pin tray	Loganberry vase
Leaf & Orange Tree bowl	Maple Leaf water set
Stork & Rushes water set	Swan master salt
Tiger Lily water set	Windmill water set
Zipper Loop lamp	

A reminder to bring your unusual finds to be identified and/or to share with the others at the Convention.

The program will be on Thursday evening, April 21st.

GOOD LUCK,
Robert Grissom
Convention Chairman

PROBLEMS - PROBLEMS - PROBLEMS

How many times have we been reminded of the saying "When all else fails, read the instructions". In the January HOACGA bulletin a motel reservation card was included and the bulletin stated that the motel would start accepting reservations on February 1, 1983. Before some of us had received our bulletin, the motel had already received some reservation cards. By January 31, thirty five (35) reservations cards had been returned.

The reason for giving the February 1, 1983 date was to allow each member the same opportunity of reserving a room.

The motel reservations will be made on the following basis:

1. Those reservations received on February 1, 2, 3 & 4, 1983 will be given first priority and the motel will send confirmations on those as they are received.

2. After February 4, those reservations that came in prior to February 1, 1983 will be accepted and will be confirmed per your request or you will be notified of any necessary changes to your request.

3. Those reservations received after February 4 will then be accepted confirmed per your request or you will be notified of any necessary changes to your request.

I know that several members, especially those that returned your cards prior to the time, will be somewhat upset and disappointed but we think it is only fair to those who returned their reservation cards per instructions within the bulletin.

Probably by the time you read this you will either have your confirmation or the motel will have contacted you about your reservation.

Bob Grissom
Convention Chairman

WELCOME NEW MEMBERS

M/M Joseph Hortsman, Ft. Jennings, Oh
Kim Landry, San Diego, Ca
M/M Teddy Sheibley, New Cumberland, Pa
Virginia Hunt, Montebello, Ca
M/M Robert King, Bartlesville, Ok
Carmae Yeakel Petersen, Montrose, Colo
M/M Donald Ruggle, Perry, Ia
M/M G. L. Stephenson, Neodesha, Ks
M/M Derek Cook, Towcester, Northants, Great Britian
M/M Robert Schmidt, Seattle, Wa



1983 SOUVENIR SALES

The 1983 souvenir sales came off with a BANG. The first week after the bulletin came out with the colored insert of the beautiful CUSTARD GLASS WITH MARIGOLD OVERLAY LOVING CUP, we have received Over 50 orders for the souvenir. Please remember their will not be as many made this year as has been in the past so get your order in as soon as possible. We do not want any of you to be left out because you were late in getting your order in for one of these beautiful items. By the time you receive this bulletin they will have been made. This means a very limited number will be produced and it will be a choice item to add to the rest of the H.O.A.C.G.A. souvenirs. A handy order blank is in the back of the bulletin for you to send in. I can only stress to you do not delay as the supply is very limited. The small table favor mugs have been made and received.

Roland Kuhn
Souvenir Chairman

Word has been received of the passing of Dorothy Taylors father December 31. Also Fred Circo has been hospitalized for observation. Our thoughts are with the families.

APOLOGY

In the January issue of the bulletin you saw the article about the DIVING DOLPHINS. But as you come to the end you probably saw no name as to who might have written the article. Well I must say I goofed again so for those who have not figured it out it was our talented writer from the United Kingdom Mr. Ray Notley. Sorry Ray.

Editor

A REMINDER

I have been requested to republish the letter to Cooley Miller from Mr. Frank Fenton regarding the care for the ICE BLUE CORN VASES GILDED IN GOLD.

The gold decorated ice blue corn vase is just beautiful. I should add one word of caution to the people who buy them. As with all gold fired decorations, on glass, the gold decoration will in time wear off if subjected to excessive abrasion or unusual rubbing.

It will be a good idea to tell your collectors to treat it as they would any fine decorated piece of glass. When it has to be washed, wash it in mild soap and water and pat it dry with a towel instead of rubbing it hard with a towel. It will last much longer that way and should be just as good 25 years from now as it is today.

One of the reasons that we tell you this is that the iridizing of the glass adds something to the surface which causes the gold not to adhere quite as well as it does to ordinary non-iridized glass. We fired these at as high a temperature as it was possible to fire glass without having it melt down. They should last a long, long time with no diminishing of the beauty of the gold. Just tell them to take good care of it.

I would have liked to have taken one for the Museum but instead please enter my order for one corn vase, decorated with gold, and bill me for it at whatever your price is and I'll see that it gets in the Museum when we finally put a display of all the souvenirs together. I hope the selling is easy.

Cordially,

s/ Frank
Frank M. Fenton
Chairman of the Board

EDUCATIONAL TUMBLER SERIES

by JOHN & LUCILE BRITT



BLUEBERRY TUMBLERS: BLUE, WHITE, MARIGOLD

It has been sometime now since we have featured a tumbler that was made by the Fenton Art Glass Company. This month we will cover one of their fine old patterns that is known as "Blueberry". The "Blueberry" pattern was made only in the water set. The three colors shown above are the only colors that have ever been reported in this pattern. No amethyst or green tumblers are known, to the best of my knowledge. The "Blueberry" in white is the hardest color to find. In fact, I would consider the white tumblers as quite scarce. For some reason, most of the white tumblers, that I have seen in this pattern, did not have very good iridescence. I have seen the "Blueberry" tumblers in cobalt blue and marigold that were outstanding in that respect, however. They are very beautiful tumblers indeed. Do not hesitate to buy a white one that is a little shy in iridescence, however, because you will not have many chances to purchase one. The "Blueberry" tumbler is of standard size. It carries three clusters of blueberries around the tumbler - - one in each piece of the three part mold. The cable that extends around the top of the tumbler is quite similar to the cable used on the "Bouquet" tumblers. "Bouquet" is also a Fenton pattern. The bottom of the base is smooth with no base pattern used whatsoever.

The tall graceful shape of the "Blueberry" water or lemonade pitcher is unusual in shape and certainly adds to the great popularity of this pattern. While the "Blueberry" water set is not as rare as the "Strawberry Scroll" and the "Lily of the Valley" water sets, you certainly could be proud to set it along beside them.



LEMONADE AND WATER SETS.



2F1539. "Money's Worth." Three entirely new shapes and designs—fruit, orange blossom, and berry embossings; coral blue and pearl iridescence. Each set consists of one full 4-gallon jug with cork handle and six full size tumblers to match. 6 sets to obl. SET. .55 Shipped from Dept. F.

Above: Old 1914 ad from a wholesale catalog.

Left: Blueberry pitcher and tumbler.

Note the price of 55¢ per set (pitcher and 6 tumblers) in the old wholesale ad. The "Blueberry" pitcher and tumbler are alongside the "Orange Tree Orchard" pieces. Also note that the pitchers were called jugs back at that time. I have noticed this in many old ads and catalogs. The above ad was from the 1912-14 era. Six water sets were packed to a barrel. The picture on the left shows the graceful shape of the "Blueberry" lemonade or water pitcher.

The "Blueberry" represents our 61st article in this series. Next month we will feature a Northwood pattern and cover the "Concave Diamonds" tumbler and water set.

PICTORIAL PATTERN PARADE

by JOHN & LUCILE BRITT

STARS & BARS (HARTUNG 10 - pg 80) FOUND IN CAMBRIDGE CATALOG

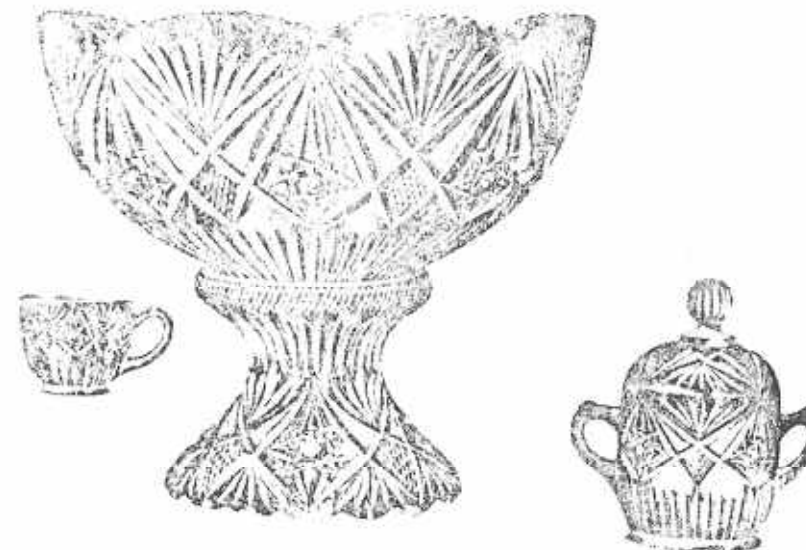


STARS & BARS WINE

This little wine glass, known as "Stars & Bars", and described and sketched by Mrs. Hartung in her book 10 - page 80, is a pattern that we believe was made by the old Cambridge Glass Company of Cambridge, Ohio. We just recently found this pattern in book No. two of Welker's Cambridge Glass books. This book contains parts of old Cambridge catalogs and was put together by Mary, Lyle and Lynn Welker. The "Stars & Bars" pattern is listed in old Cambridge catalogs as pattern No. 2626.

This is the wine that was a part of the Robert Comer collection which was sold at the Burns auction in New Philadelphia, Ohio on November 20, 1982. The wine is of a nice marigold color. It is just a little over 3 3/4 inches tall and with a base diameter of slightly less than two inches. The top measures 2 1/8 inches wide. The pattern is of the intaglio or near-cut type. The bottom of the base has a sunburst like figure that is very similar to that used on the base of the Cambridge "Inverted Feather" tumblers and punch cups. It is quite different from the 26 point rayed star pattern that is found on

the base of the "Inverted Feather" wine, however. The wine that is featured here is the exact wine that is described in Hartung book 10. As far as we know, it is the only one that has ever been reported. The "Stars & Bars" wine is not signed with the Nearcut trademark which was used on some Cambridge pieces, however. The "Inverted Feather" punch cup, wine and tumblers in carnival glass are likewise not signed. The "Inverted Feather" water pitcher is signed, however. The trademark is rather unusual in that it is placed on the handle instead of in the bottom of the base where it is usually found. Inverted Feather (Hartung 3, pg 44) is a Cambridge pattern.



STARS & BARS IS CAMBRIDGE PATTERN NO. 2626

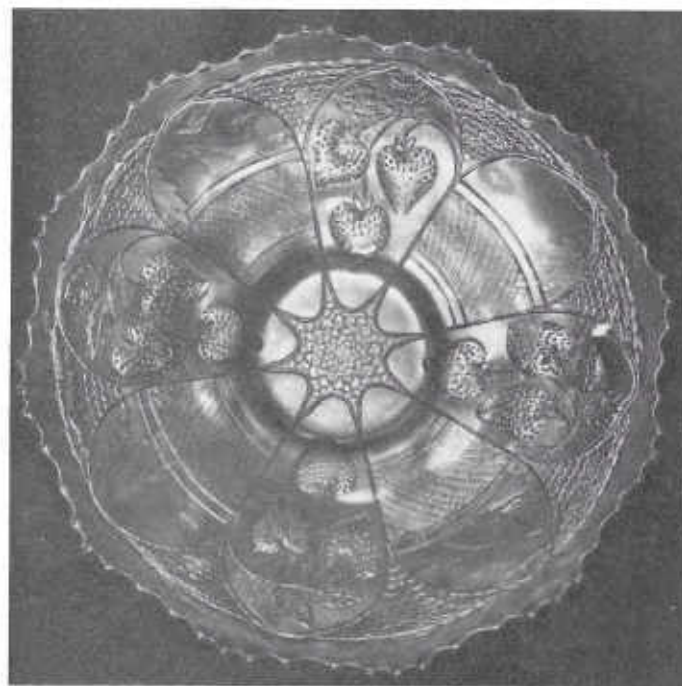
Above we show parts from old Cambridge catalog reprints that illustrates three pieces of the "Stars & Bars" pattern. Our featured wine glass is not illustrated, but is definitely the same pattern as that shown here. The little "Stars & Bars" wine is a very interesting piece of carnival glass. Finding the pattern in old glass catalog material makes it even more interesting. It will be of interest to see if more pieces of this pattern will be discovered in carnival glass. In addition to the above pieces in this pattern, book #2 shows a footed cake plate on page 105. It is listed only as pattern No. 2626 and states that it was made in several sizes. Welker's old Cambridge reprint books are highly recommended for use in working with Cambridge patterns. Another carnival glass Cambridge pattern listed only as No. 2351, that we call "Cambridge Hobstar", was located in this book by Jack and Mary Adams a few

years ago. Several carnival glass punch cups, in both marigold and green, have been discovered in this pattern. A number of other Cambridge patterns, that are known to have been made in carnival glass, are listed in these two books. The books can be purchased from Lyle Welker, 2 East Main Street, New Concord, Ohio 43762.

In further study of Hartung's "Stars & Bars" (Cambridge 2626) pattern, I noticed a salt shaker pictured in "Glass Salt Shakers" by Arthur G. Peterson (Page 64). No information was given as to the maker of the pattern in this fine book on salt shakers. He lists the pattern name as "Ladder-to-the-Stars". I could not find any thing on this pattern in Kamm's or Metz's books. However, a tumbler in this pattern, listed only as No. 1063, is shown on page 32 of "Fostoria - Its First Fifty Years" by Hazel Marie Weatherman. She notes that the pattern was introduced in 1903 and discontinued in 1908. I can not find any connection between these two companies, but they do both have this exact pattern listed in their old catalogs under different numbers. Since Fostoria discontinued the pattern in 1908, which was about the time carnival glass was getting started, it would seem unlikely that Fostoria made any pieces of this pattern in carnival glass. We hope to find more on this later.



EXTREMELY RARE PLATE TURNS UP



ABSENTEE DRAGON & BERRY PLATE

This fantastic plate was sold at the January 8th auction held in Lawrence, Kansas by John & Laveta Woody. It sold for \$1900, which was, according to most people attending the auction, a very high price. But, I have asked myself many times since the auction, "Was it really all that high"? Considering everything about this outstanding piece of carnival glass, maybe not. Here we have a 9 1/2 inch truly flat "collar base" plate which is, as far as we know, a one of a kind piece. The iridescence and color were outstanding and it was in absolutely mint condition. It was indeed very desirable. I am sure almost everyone who was there, including this writer, would liked to have taken it home with them.

I am also quite sure that those who sent in mail bids on the piece would have went higher had they been at the auction to observe it. After thinking about it for awhile, you get the feeling that it was probably worth that amount or perhaps more.

The featured plate was actually not a part of the Vickery collection of Ponca City, Oklahoma, which was being sold at the auction, but was sent to John

Woody by Skip Arnoldi of Florida. The plate was purchased by Frank Hulse of Pawhuska, Oklahoma.

The design on this plate is very similar to the "Dragon & Berry" pattern, except for the absence of the dragons. In fact, Don Moore when writing John Woody about this plate, labeled it the "Absentee Dragon & Berry" plate. The title seemed rather fitting to me, so I have used that name in this article. It has the "Bearded Berry" pattern on the reverse side and was no doubt made by Fenton. I would guess that this piece was made when they were first working on experimenting with this pattern, and then later added the dragons. This is of course just a guess on my part. These dragons were also used on the very popular Fenton "Dragon & Lotus" pattern.

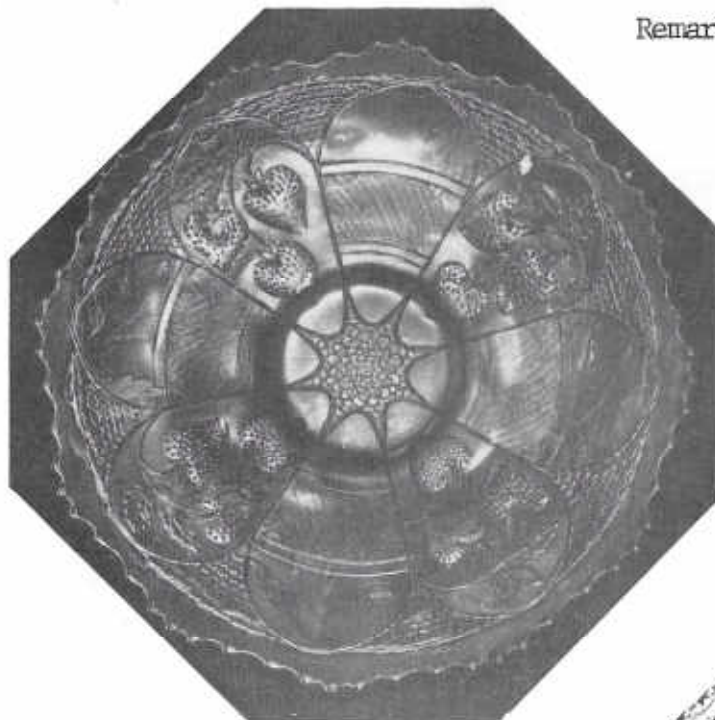
We are including several shots of this pattern in order to be more sure of bringing you a fairly good picture of the plate. We are also including a picture of the regular "Dragon & Berry" pattern so that beginning collectors will be able to detect the difference between the two pieces. The "Dragon & Berry" pattern is sometimes called "Dragon & Strawberry". The "Dragon & Berry" pieces are listed as being rather hard to find by all authors on the subject of carnival glass, but to find one absent of the dragons would have to be called an extreme rarity.



ABSENTEE DRAGON & BERRY PLATE

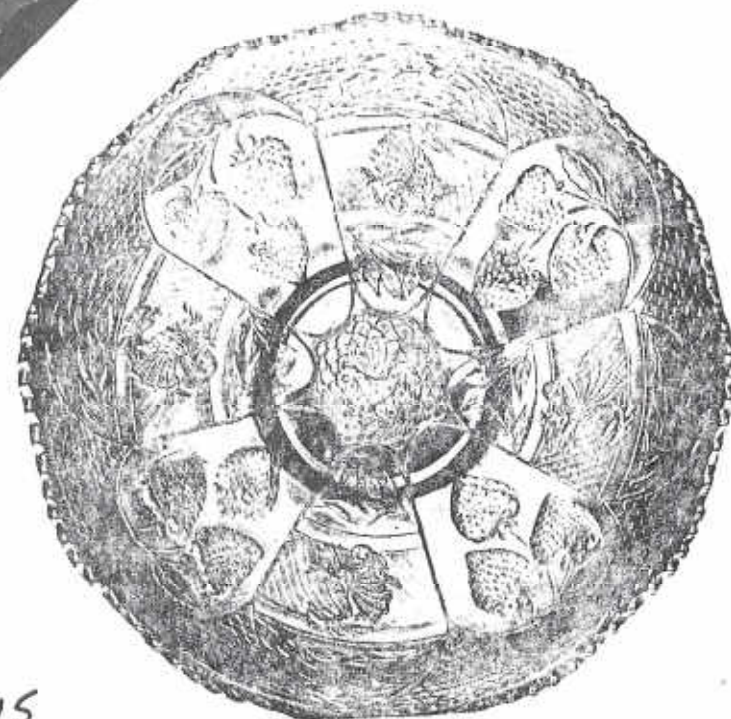
That's about it folks. The "Absentee Dragon & Berry" pattern is now known to exist and will provide us with one of the top carnival glass stories in 1983. I am quite sure there will be a good many more interesting stories that will come up during the year. Things like this is what makes carnival glass collecting one of the greatest hobbies that we have in America, not to mention all the nice people we get to meet.

Remarks & pictures by John & Lucile Britt



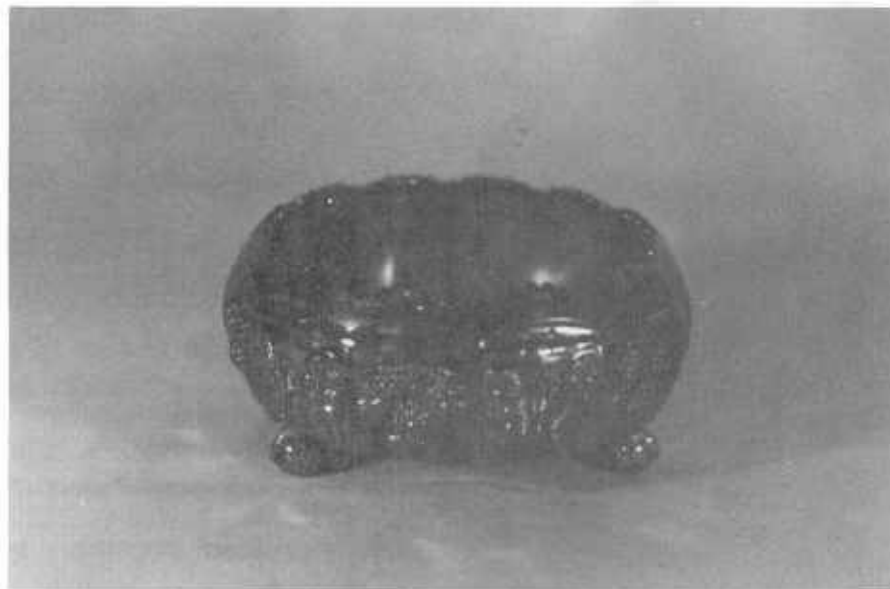
ABSENTEE DRAGON & BERRY

DRAGON & BERRY LOW BOWL



Carnival Cameos

BY DONALD MOORE



BUTTERFLY AND BERRY (FENTON) - Only three of these nut bowls are known. The one shown here in amethyst sold for \$530 at a Burns auction in October of 1980. It was assumed these pieces were shaped from the master Butterfly and Berry bowl. Such is not the case, however, as it appears to have been made from the somewhat smaller Fan Tail bowl, which carries the Butterfly and Berry as an exterior pattern. The Fan Tail portion has been removed, as the interior of this nut bowl is plain. This is an attractive and well proportioned piece. It is difficult to understand why more of these weren't produced.

SCROLL EMBOSSED (SOWERBY)
Sowerby pattern number 8005
Exterior pattern "Jewelled Peacock"



This small carnival novelty was marketed by Sowerby as an ashtray in 1926. This was a bad year for the firm due to shortages of coal and the General Strike which affected production badly.

The dish was available in marigold and amethyst and is very attractive with its four open-work handles. The interior pattern is of course Scroll Embossed. The exterior is the original pattern from the mould first used in late 1890's when it was offered as a "sweetmeat". The Peacock Head trademark of Sowerby is proudly displayed in the centre of the exterior and, as this pattern has no name, I suggest "Jewelled Peacock".

The Scroll Embossed was stolen from Imperial and was used by Sowerby on the interior of this ashtray, inside the Diving Dolphin bowl and in a small bowl with Pineapple exterior. Any other Scroll Embossed items, other than these listed here are made by Imperial (USA).

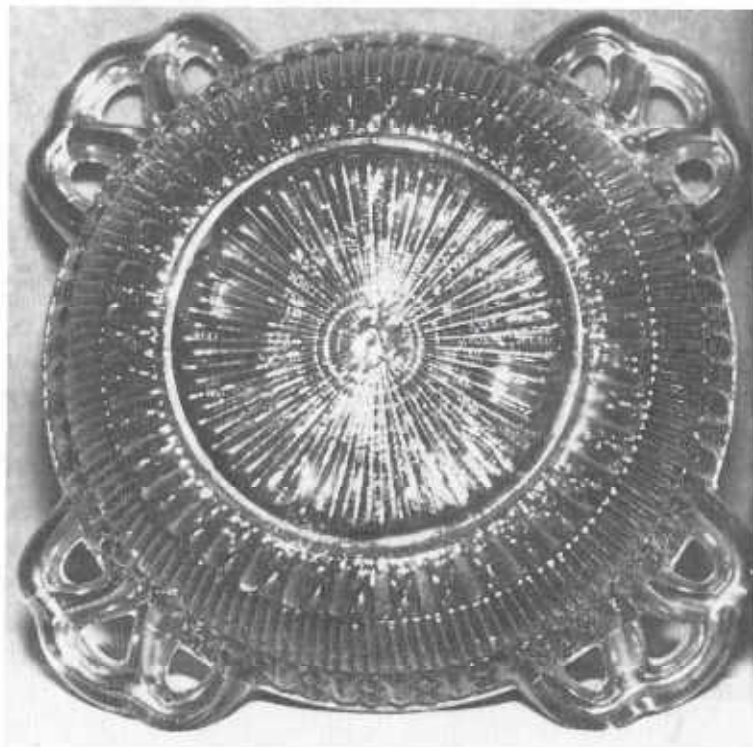
As far as is known Sowerby only used this Imperial design on iridised goods and no plain crystal items, made by Sowerby, have been found with this Scroll Embossed design. This pattern was in fact the only one to be used by Sowerby with iridescence in mind. It looks spectacular on the many carnival bowls and plates by Imperial that were sold in the UK during the 15 years previous to its use by Sowerby who hoped their "Scroll Embossed" would look, and sell as well as the original Imperial product.

These ashtrays are scarce and are difficult to find undamaged. Any perfect examples should be bought and treasured.

I would like to remind you all that no Sowerby carnival glass was exported to the USA at the time of its manufacture. It has all arrived in the States in containers from Europe from the late 1960's onwards. It is still being shipped to you so keep your eyes open in flea-markets etc. You could find some bargains.

(Author's copyright reserved 1982)

Ray Notley
England



MILLERSBURG NOTES # 21 - by BILL EDWARDS



PERFECTION WATER SET

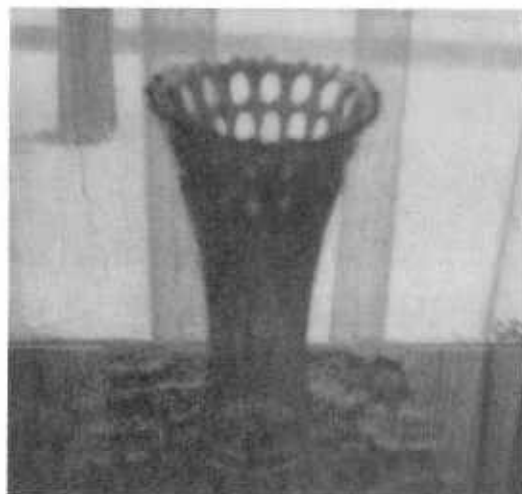
I consider this rare and beautiful waterset from the Millersburg company, one of the triumphs of their production and a fitting sister design to the rare Gay 90's waterset.

In design, the Perfection pattern consists of a series of oval surfaces with beading borders. Below the ovals are feathers. On the Tumblers the design is completed by fans between the tops of the ovals, while on the bulbous pitcher, the upper area contains smaller beaded ovals with small sections of feathers extending toward the top. All in all a simple but effective pattern. The pitcher stands 9 1/2" tall and has four mold marks. The tumblers are 4" tall and taper from 2 7/8" in diameter at the top to 2 1/8" at the base, which bears a 24 point rayed star.

Mostly found in amethyst, marigold and green examples are known in the tumblers and pitchers and an ultra-rare ruffled top pitcher is known in amethyst color only.

In price the Perfection pitchers sell in the \$3000 to \$4000 area while the tumblers go for \$400 to \$600 each. Green is my personal favorite in the Perfection pattern, but any color is a real treasure and would enhance any collection. And many times, especially on the amethyst pitchers, the finish

is not the fine radium one we have come to expect from the Millersburg company; however, the tumblers are nearly always radium and two distinct shades of marigold exist as you will remember if you have seen my Millersburg book on carnival glass.



One year ago we bought a Blackberry Whimsey Vase shaped 7 5/8" in marigold. Light marigold at the base, dark marigold at the top. The Blackberry pattern on the interior and the usual Fenton Basketweave on the exterior.

"We send to you one picture of our Blackberry Whimsey Vase"

Claude, Gesele Lamothe
Granby P Q, Canada

COMING ATTRACTIONS
CONVENTIONS

APRIL 21-22-23-24

HEART OF AMERICA CARNIVAL GLASS ASSOC. - Convention, Holiday Inn, Mission-Overland Park, Kansas.

JUNE 3-4-5

LINCOLN LAND CARNIVAL GLASS - Convention, Holiday Inn, I-90 & Rt. 53, Rolling Meadows, Ill 60008 PH 312-259-5000

JUNE 7-8-9

AMERICAN CARNIVAL GLASS ASSOC. - Convention, Penn-Harris motel, Camp Hill, Pa

JULY 28-29-30

INTERNATIONAL CARNIVAL GLASS ASSOC., - Convention, St. Louis, Mo.

AUGUST 11-12-13

PACIFIC NORTHWEST CARNIVAL GLASS CLUB - Convention, Holiday Inn, Eugene, Or

OCTOBER 7-8

AIR CAPITAL CARNIVAL GLASS CLUB - "Mini Convention", Sheraton Airport Inn, I-235 & US 54 West, Wichita, Kansas 67209



OCTOBER CHERRIES

Last fall we knew of an antique show at near by Huntington and since it was something to do we decided to go and look as we have learned long ago not to expect a rarity to turn up. As we browsed among the glassware looking for the colorful carnival we spotted one of the elusive Northwood's Cherry and Cable tumblers. We were surely surprised and happy about that and felt well rewarded for our trip.

Somewhile later in the fall, October to be exact, we were visiting friends out of state and as usual the conversation turned to carnival and we commented we had found a hard to get (N) Cherry tumbler. To our unbelief they said "we could have bought a whole water set but we do not particularly like marigold carnival". We described in detail the pattern as we could not believe a whole set was anywhere. The description seemed to fit perfectly so our hearts fell a bit when they said it had been 2 or 3 months ago when they saw it. Anyway they were kind enough to call the dealer who had had it. Yes, it was still there so off we all went over hill and dale so to speak. The dealer had it boxed up and announced right away it was not for sale until she learned more about it. She had heard it was worth more than she had thought at first. She took our name and said she would call us when she decided on a price. Well, we figured that was good bye water set for us. We had to return home empty handed and heavy hearted. Of course we could think of nothing else but that water set while we hoped to hear. Also fearing price would sky rocket completely out of reach.

Several nerve wracking days went by when true to her word she called-giving us a price we felt we could not pass up. We lost no time getting ready as it was quite a little distance and a storm was coming. Any other time we would never have left home but an emergency like that made us ignore the weather. We hurried along as clouds got blacker and winds stronger. We really were not positive we could find the place all by ourselves but luck was with us and we did. We hardly looked at it only to see if it all was there. Which it was. By then rains were pouring down outside but inside the car as we returned home the sun was shining. It really is a very pretty and colorful set and we feel quite lucky to have found it-by coincidence-from a chance visit and conversation. Are we glad these nice friends or ours did not like marigold carnival too.

Also we had to take a table set in the same pattern-minus the covered sugar bowl-however butter dish bottom was damaged but a fabulous color. So now we nearly have 2 table sets in the Cherry and Cable as we had finally put one together piece by piece for years. Also have two extra tumblers as we had found one a few years back never ever expecting another one.

Just proves one should never give up looking as carnival is being found every year in places never dreamed of. Last year was our luckiest year so far for unusual items. We found a carnival floor lamp-then a very large vase that resembles the Millersburg Hobstar and Feather giant rose bowl in shape. A cut type pattern several knowledgeable persons said it was probably Cambridge and the cutest odd shaped Kitten piece-sort of a chopped off version of the tooth pick pieces-but if it was a larger piece one would almost call it jardiniere shape. Any way its different than any we have ever seen. May tell you about them later.

As we go into a new year we shall hope it will be one of the best for all the carnival members everywhere. Every year does bring out more good carnival.

Grace & Byron Rinehart
Charleston, West Virginia



WOODY AUCTION

Another Woody Auction is now past history. On Saturday January 8, 1983, in Lawrence, Kansas the collection (over 400 pieces) of fine carnival glass was disposed of. It was the collection of Mr. and Mrs. Frank Hulse. There were approximately 130 bidding numbers out for this auction. The economy situation had no bearing on this auction. The prices were very well upheld I am sure everyone who attended would agree that the slow economy was not present at this event. The glass has super color in most cases and although there was some damage the prices held up well. I will try and give you a cross section of some of the pieces and the prices received.

Imperial Grape wine decanter 2 wines M 85
 Pony bowl M 45 -
 Octagon 7pc water set M 160 +
 Millersburg Primrose 10 bowl G 80 -
 Stag & Holly bowl b 150
 Frutis & Flowers bon bon B 45 -
 Vintage epergne A 125 -
 Fenton Flowers rosebowl G 55 -
 Captive Rose compote M 40 +
 Horse Medallion plate M 7 1/2 M 110 -
 Diamond Lace water set P 400
 Field Thistle creamer, sugar spooner M 170
 Butterfly & Berry lg berry bowl B 80 -
 Nautilus P 130
 Scroll Embossed compote P 45
 Panelled Dandelion water set 7 pc B 350 -
 Kittens cup & Saucer M 160
 Kittens toothpick M 110
 Dragon & Lotus bowl 8 1/2 R 500
 Maple Leaf butterdish P 135
 Heavy Iris 7 pc waterset M 425
 Daisy Cut Bell M 475
 Holly Berry hat R 200 +
 Persian Garden plate P 110 -
 Fanciful plate W 140 +
 Town Pump N P 500
 ABSENTILE DRAGON & STRAWBERRY PLATE m 1900 +
 Fluted Holly Berry hat R 225 +
 Milady tumbler B 55
 Grape Arbor 7 pc water set M 350
 Corn Bottle S 200
 Fluted Blackberry Hat R 225 +
 Grape Delight rosebowl w 90 +

Cherry Circles bon bon B 80 +
 Peacock at Fountain 7 pc water set b 475
 Farmyard bowl P 1150 -
 Millersburg Rays & Ribbons bowl A 200
 Rays compote G 25
 Beaded Cable rosebowl M 60
 ABC childs plate M 45
 Fashion 7 pc waterset M 100
 Corn vase IG 170 +
 Peacock Tail bowl A 60 +
 Peacock on Fence plate P 275 +
 Fashion 7 pc water set S 400 -
 Corn vase M 360
 G/C candlelamp G 400 -
 G/C 14" punch bowl, base 7 cups 450 -
 G/C 4 pc table set G 500 +
 G/C humidor M 160
 G/C 4 pc table set P 475 +
 G/C humidor P 90 -
 G/C cracker jar P 360
 G/C covered compote p 350
 G/C humidor M 175 +
 G/C 7 pc water set P 375
 G/C centerpiece bowl P 325 +
 G/C hatpin holder P 125 -
 G/C open compote M 250
 G/C perfume bottle P 400
 G/C perfume bottle M 100 -
 G/C cologne bottle P 150
 G/C dresser tray P 170

G/C pin tray P 190
 G/C master punch bowl damaged base 13 cups M 600
 Wreathed Cherry banana bowl P 100
 Fentonia 7 pc waterset M 310
 Butterfly & Plume 7 pc waterset B 600 +
 Millersburg Courthouse bowl A 450 +
 Acorn Burrs 7 pc waterset P 750
 Millersburg Peacock at Urn bowl A 375 +
 Fishnet epergne PO 240
 Maple Leaf 7 pc water set P 350
 Ski Star bowl 11" PO 110
 Orange Tree plate 9" M 70 +
 Panelled Dandelion water pitcher B 100 -
 Millersburg Nesting Swan bowl M 210
 Mikado compote M 90 -
 Birds & Cherries bon bon B 55
 Rambler Rose tumbler B 30
 Zippered Loop lamp S 225 -
 Captive Rose bowl G 80 +
 Scroll Embossed plate P 100 +
 Foral & Grape 7 pc water set B 325 +
 Millersburg Nesting Swan G 150 -
 Springtime lg berry bowl G 150
 Honeycomb bon bon M 30
 Dogwood Spray bowl PO 95 +
 Heavy Iris tumbler A 45
 Blackberry basket plate M 220
 Fentonia 4 pc table set M 350
 Three Fruits 12 sided plate M 75
 Wishbone bowl B 85
 Wishbone & Spades 6 1/2 plate P 100
 Tornado vase P 110 -
 Australian Emu bowl M 80
 Australian Kingfisher bowl M 60
 Australian Ostrich compote M 70
 Australian Swan bowl M 60
 Australian Butterfly & Bells cake plate M 80
 Australian Butterfly Bush compote M 80
 Good Luck plate pastel M 120 +
 Peacock at Fountain table set P 850 +
 Dahlia berry bowl W 160 +
 Orange Tree fruit bowl B 110
 Diamond Lace tumblers P 90
 Nippon bowl IB 190 +
 Hearts & Flowers bowl IG 270 +
 Little Flowers chop plate M 450
 Poppy Show plate M chip 175 +
 Rose Show bowl AO 225 -
 Rose Show bowl B 230 +
 Rose Show bowl P 250 +
 Circle Scroll tumbler M 325 +
 Orange Tree hatpin holder B 125 +
 Orange Tree bowl 120
 Memphis punch cup M 15
 Peacock on Fence plate P 205 -
 Orange Tree plate W 95 -
 Lotus & Grape bowl G 70 +
 Strawberry bowl G 70 +
 Hobstar Flower compote P 80 +
 Butterfly & Plume tumbler B 15
 Vintage nut bowl B 50
 Vintage Nut bowl G 55
 Garland Rose bowl B 80 +
 Lions bowl M chip 75 +
 Fine Cut & Roses candy dish A 55 +
 Peacock & Grape bowl G 65 -
 Louisa rosebowl G 95 +
 Pine Cone bowl B 25
 Persian Garden bowl W 40 -
 Stork & Rushes sauce A 20
 Heavy Grape bowl P 50 +
 Poinsettia & Lattice bowl M 80
 Cherry ftd bowl M 30
 Horse Medallion bowl M 55 +
 Three Fruits bowl P 30
 Windflower bowl A 30
 Nippon bowl M 60 +
 Dragon & Lotus bowl G 55 -
 Maple Leaf sherbet P 15
 Woodpecker wall vase M 45
 Imperial Jewels nappy W 45
 Imperial Hobstar creamer P 35

May I please express an opinion or two concerning the present dilemma as to the cost of the H.O.A.C.G.A. Bulletin.

Since it is apparent that cruix of the matter is the "For Sale" ads and equally apparent that in preponderance of cases that is one of the prime attractions of the Bulletin, then, since this feature is presented to all of the members, let all of the members pay for it.

The best method appears to be an increase in the annual dues. Let the Bulletin pay for itself through charging on approximation of its cost which will still be much cheaper than its considerable value.

Lets not overlook the indeterminate value of the superior educational and informative articles therein, which is otherwise unobtainable as far as I know and is free to all members, even if they never look at an ad.

The value received will still be far in excess of any cost charged, and the cost will be spread among all of the users of the information presented.

However, I would further suggest that no more than one charge be made per family, whether the "family" be one person or more than one person.

John Stewart
Weymouth, Mass

I would like to add my two-cents worth. I like the BULLETIN just as it is. It gets better all the time. I think it is great. Raise the dues is my vote.

Robert Larsen
Columbus, Neb

Another new year has arrived, and we are already getting excited about this years convention in April.

Reflecting on the past convention, we can not hardly express enough appreciatio for the wonderful educational guest speaker your convention has hosted, during your banquets. The best topping is the Saturday night "Chuckwagon" dinner and country western dance and music. We certainly are looking forward to the "Chuckwagon" style of entertainment, and we think we can speak for the greater

majority of the H.O.A.C.G.A. club members. See you in April.

Don & Elsie Weiss
Jack & Mary Lou Valek
Wayzata & Spring Park, Mirm

I wanted to write and express my views concerning the financial burdens of the association. I am glad you decided to keep the ad policy as is. I also can understand an increase in dues, even though doubling them seems a bit much. Charging for the notebook inserts is a good policy. We all would spend for a new book, and this is what the notebook is.

I do have a suggestion for possibly saving the association a little money on each bulletin. Since you use off-set printing, you could think of using a reduction of an 8 1/2 x 11 page for each page in the bulletin. That way you can get a little more on each page and possibly save paper and printing costs. this would not reduce the print size too much and would still be easily read.

We do enjoy receiving the newsletter every month and enjoy reading all the informative articles.

Barbara Chamberlain
Winthrop, Ia

The Tampa Bay Carnival Glass Club held its annual Christmas Party at the home of Shirley and Tiny Conyers in Madeira Beach, Sunday, December 19, A holiday buffet was enjoyed by the twenty-two members and guests present. Following a brief business meeting the group exchanged gifts.

Plans have been completed for the Lose Your Heart To Carnival Glass Jamboree to be held February 11 and 12 at the Huntly Inn, Lakeland, Fl. A hospitality room will be open at 7 PM Friday. The displays for exhibiting, selling or trading will be ready for set-up 8 AM. Saturday. Tables will be available fo sellers at \$15 per 8' table. Tables for display only are furnished complimentary by the host club. This year floor space has been doubled. The Huntly Inn is offering special rates at \$38. double, \$34 single, children free Lakeland is within 40 minutes of Disney, Epcot, Sea World and all of central Florida famous attractions. Special rates are available for five days before or after the Jamboree at the Inn. If it is time for a sunny vacation plan it around the Jamboree. A banquet at \$10.75 per person will be held Saturday night. Feel free to call Art Smith at 813-644-4058 or write to 4535 Holder

Ct., Lakeland, Fl 33803 for additional information.

The next meeting will be held with the Smiths in Lakeland Sunday, January 16, 1983. Any winter visitors are welcome.

Arthur Smith
Florida

I am very interested in the informative articles contained in the bulletin. It is without a doubt the best bulletin issued.

Barbara Zak
Chicago, Ill

After receiving the last bulletin in regards to the convention plans, etc. we are very disappointed that the Chuckwagon dinner & country-western dance has been changed to "Italian Night". We feel, why change a good thing especially when so many people really enjoy it. We would like to hear how the other club members feel about this. However, we sincerely hope that this change will be a success.

Don & Elsie Weiss
Minn

Just writing to express our views, on the doubling of our club dues.

We have been members for a long time, we enjoy your bulletins very much, sure we would hate to drop out, but belonging to all 3 clubs, may be a bit much, for us senior citizens.

In reading various views appearing in our bulletin, we are inclined to disagree with some of them.

As to the cost of advertising your glass for sale, in the bulletin, would like to add this point of view, who benefits from the sale of the glass? It is the seller of course, so why not, he or she, pay a fixed cost, if our club is in need, of extra money. We subscribe to the antique trader and pay their sub. price, but if we wanted to advertise glass, we would have to pay extra.

Oh well, I am sure the club will do what it has to do, just wanted a chance to express our view point.

Ruth & Jim Jones
Richmond, Va

Lorene and I would like to thank the H.O.A.C.G.A. club for all the nice cards notes and phone calls that we received. It sure did help to know we have such good friends.

Al & Lorene Sebaugh
St. Louis, Mo

It just goes to show you, beauty is in the eye of the beholder. In the January issue of the bulletin, I noted that of the 192 items offered for sale, 4 were good iridescence (GI), one the iridescence was not noted and 187 were deemed to have excellent iridescence (EI). Fabulous.. Wonder where the ordinary carnival is?

Regarding financing. I agree with those who have previously stated that charging for the for sale and wanted items will greatly diminish the number of ads. And because many, many members so greatly enjoy that treasure hunt, this would seem ill advised. The overall problem seems analogous to Social Security. Outflow or benefits vs inflow of cash. Might I suggest some other reduction of benefits which I have not seen any discussion on? First, I think that cash awards for room displays at the convention are not necessary and could even be construed as inappropriate. Most of the Don and Connie Moores and Grace & Byron Rineharts bring their treasures for us to see with a pure motivation of love of the glass and their unselfish desire to share. I think justice would just as well be served by three additional souvenir whimsies as awards. Another suggestion, and maybe this one does not result in a big enough cost savings, I do not know, would be to eliminate the hard liquor from the convention "Hospitality Room". We could go to a non-booze approach (i.e. bring or buy your own) or for those of us who do enjoy an occasional drink, beer or (California) wine.

I am looking forward to seeing lots of you at this years convention. Hang in there you officers and workers, we all appreciate your hard work so very much.

John Muehlbauer

The Tampa Bay Carnival Glass Club met Sunday, January 16 at the home of Dorothy and Art Smith in Lakeland. Following the customary noon buffet the business meeting was held. Arthur I. Smith was re-elected President for 1983. Walter Holzworth, Vice-President and Shirley Conyers, Secretary were re-elected. Barbara Hobbs was elected Treasurer. Plans were finalized for the February Lose Your Heart to Carnival Glass Jamboree. Art appointed hospitality, registration, membership and auction committees.

A fund raising white elephant auction was held with Phil Graham as auctioneer ably assisted by Florence. Several members displayed recent acquisitions of carnival glass in the show and tell period.

Arthur I. Smith
Florida

**SECOND ANNUAL
OLD CARNIVAL GLASS
SHOW AND SALE**

Lititz Recreation Center, Lititz, PA

March 19, 1983 9 A.M. - 6 P.M.

Admission \$2.00...\$1.50 each with this card

Sponsored by - The Keystone Carnival Glass Club

For More Information, Contact Elwood Funk

563 Hiview, Lititz, PA 17543 - Phone: (717) 665-2395

CARNIVAL GLASS RARITEIS-A color line approach. Lists the top 10 rarities in each color-plus complete rarities price guide-40 pages of black and white pictures-special section on whimsys-\$8.50 pp. Also THE SHAPE OF THINGS IN CARNIVAL GLASS, 110 pages, 200 items in full color-\$9.95-Donald Moore, 2101 Shoreline Drive, Apt 462, Alameda, Ca 94501

CARNIVAL GLASS SERIES, each book has 100 different patterns illustrated and described-10 books in the series, books 1,2 and 3-\$3.00 ea, books 4 thru 10-\$3.50 ea. New edition 1981-82 price guide-\$5.00 pp, Northwood Pattern Glass-clear, colored, custard and carnival-\$9.95 plus 50¢ postage. Marion T. Hartung, Box 69, Emporia, Kansas 66801

CARNIVAL IN LIGHTS-A full color book on Carnival Lighting, including Gone With The Wind Lamps, Candle Lamps and shades-price guide included-\$11.95 plus postage, Helen Greguire, 103 Trimmer Road, Hilton, New York 14468

CARNIVAL GLASS TUMBLERS-Author Richard Owens-order from Mr. Don Brown, Wallace-Homestead Book Company, 1912 Grand Ave., Des Moines, Iowa 50303

IMPERIAL CARNIVAL GLASS-THE EARLY YEARS-\$9.95, FENTON CARNIVAL GLASS-THE EARLY YEARS-\$9.95, New price guide 1981-82 edition-\$3.95-MILLERSBURG THE QUEEN OF CARNIVAL GLASS-\$8.95, THE STANDARD ENCY. OF CARNIVAL GLASS-650 different full color patterns photographed, 223 page hardbound illustrates and evaluates Dugan, Fenton, Imperial, Millersburg, Northwood, Minor American, English Carnival, and more-\$24.95, "Northwood, King of Carnival Glass-\$9.95, Bill Edwards Author, Collectors Books, Paducah, Kentucky.

CARNIVAL GLASS PRICE GUIDE-Sherman Hand - Charlotte Williams-\$5.95 pp. Order from Sherman Hand, 127 Olympic Circle, Vacaville, Ca 95240 or Charlotte Williams, 630 N Lower Sacramento Rd., Lodi, Ca 95240

FENTON GLASS-THE FIRST 25 YEARS- 144 pages, 72 in full color, more than 400 items pictured in Fenton's carnival and iridescent "stretch" colors, rare catalogue reprints (some in color), a complete history of the factory's early years, from 1907 to 1932, \$15.95 for softcover edition with price guide, \$20.00 for limited edition hardbounds. Order from the author, William Heacock, P O Box 27037, Columbus, Ohio 43227.

Angela Hallam's 52 page fully illustrated paperback-first book to tell about the English-made Carnival-\$4.85 surface postage, air mailed \$5.85. Order from Wise Books, 82 Hart Lane, Reigate, England, RH2 7EA

CARNIVAL GLASS AUCTION PRICE REPORT-A list comprised of 2400 sale prices of Carnival that sold between June 1979 and April 1982. Patterns by Hartung name and the information includes date sold, price and auctioneers name for easy reference-Single copy price for 8 1/2" X 7" list \$8.00 pp-Quantity and club discounts available. Al & Wendy Rettke, 14226 East 143rd Lane, Burnsville, Minn 55337.

OTHER REFERENCE MATERIAL

Presznick's "Encyclopedia of New Carnival and Iridescent Glass". A great reference book with color plates galore and prices, \$19.95. Reichel's "Modern Carnival Glass." 100 illustrated pages of Carnival made since the 1960's. Volume 1, \$4.00, Volume 2, \$4.95, Price Guide for both volumes \$2.50. Add \$2.00 for shipping and insurance. Theodore A. Parent, Box 596, RD 1, Canfield, Ohio. 44406

"Encore by Dorothy" books 1 and 2. A series of books on new reproduced Carnival Glass, giving information on the patterns and colors that are being reproduced. An invaluable asset to the old carnival collector, possibly saving him many dollars by knowing what has been reproduced. Price for each book is \$7.70 postage paid. Be sure to state which book you want. Dorothy Taylor, Box 11734, Kansas City, Missouri, 64138

FOR SALE

Adele Taps, 1636 Nevada Ave, Lorain, Oh 44052 PH 216-288-0611

G EI	Millersburg Many Stars bowl 10" scarce	150
S EI	Corn Bottle 2 sm nicks top rare	235
IB EI	Nippon bowl 8 1/2	90
W EI	Fanciful ruffled plate 8 1/2	130
A EI	Millersburg Roses & Fruit compote very rare	475
A EI	Stag & holly ftd 13" bowl	150
A EI	Seacoast pin tray rare	200
M EI	Seacoast pin tray rare	210
A EI	Millersburg Deep Grape compote rare	500
OG EI	Peacocks on Fence 8 1/2 bowl (N)	90

Mrs. Wm. McGarrah, R 1, Lowell, Ar 72745

G EI	Jacobean square 7 1/2 bowl M Jacobean bowl slight damage both for	65
M	Heron & Rushes spooner chip on base	35
M GI	Orange Tree Orchard tumbler	20
M GI	G/C N sauce dishes 3 ea	17
M GI	Funeral Vase plain 3 ring chips top	25

Diane Fry, 5395 Middleton Rd, San Diego, Ca 92109 PH 619-272-1663 Aft 5PM

P EI	Heavy Grape 5 1/2 dish silvery	32
P EI	Peacock Tail fluted 5" dish	30
M EI	Propeller compote	26
M EI	Lattice & Daisy tumbler	31
M EI	Cosmos Variet 10" bowl	38
M GI	Golden Wedding pint	18
B GI	French Knots hat	27
B EI	Minieature Blackberry compote	55
G EI	Mayan bowl flake bottom collar	58
G EI	Wold Rose open heart ftd bowl	42

Burney Talley, 1814 Slate N. W. Albuquerque, N M 87104 PH 505-242-1261 eve

P EI	G/C sm punch bowl base 3 cups	625
P EI	Acom Burr 7 pc water set	760
F EI	Loganberry vase	245
B EI	Milkglass Colonial candlestick 1	50
M EI	Octagon pitcher large size	65
M GI	G/C whiskey decanter	625
G EI	Millersburg Cosmos bowl	45
P EI	Imperial Grape carafe	125
M EI	Flute Lomonaide mug	15

Charles Perry, 8641 Lakeshore Dr, Southaven, Ms 38671 PH 601-342-1694

W EI	Orange Tree breakfast sugar	25
A EI	Millersburg Peacock Tail Variant compote	45
M EI	12 1/2 Ripple vase	9
B EI	Fenton Blackberry openedge hat	24
A EI	Fenton Blackberry open edge hat defect	10
B EI	Wreath of Roses compote	23
PO EI	Leaf Rays one handled nappy	24

Jos Mello, 535 Fish Rd, Tiverton, R I 02878 PH 401-624-2174

M EI	G/C hatpin holder	135
M EI	Peacock at Urn compote	35
M EI	Butterfly & Berry tumblers 3 ea	20
M EI	Lattice & Daisy tumbler	15
G EI	Inverted Strawberry nearcut bowl	30
G EI	Imperial Grape punch cup	15
R EI	Holly bowl 8 1/2 sm crack	125
A EI	Star of David bowl (N)	55
B EI	Basket (N) round	65
M EI	Lattice & Grape tumblers 2 ea	15

M. E. Hill, Box 10157, Bradenton, FL 33507

M EI	Millersburg Peacock Proof sm berry bowl	195
A EI	Hanging Cherry table service 4 pc pin head on base of sugar	700
G EI	Hobnail Swirl pulled vase	575
G EI	Feather-Heart pitcher	575
M EI	Heavy Grape 10" ruffled edge bowl	85
	Millersburg photo of factory smoke stack	35
A EI	Open Rose whimsey 3 corner	150
M EI	Black Berry Wreath 8" bowl	70
M EI	Multi Fruits & Flowers 10 pc punch bowl rare tulip shape 1 cup slt damage	1400
V EI	Acom compote ext rare pattern very rare color	3100

S. F. Kell, 919 Thomasville Rd, Houston, Mo 65483 PH 417-967-4414

M EI	Butterfly & Berry Tumbler ea	18
B EI	Butterfly & Berry tumbler ea	30
W EI	Grape Delight rose bowl Chip on ft	55
P EI	Bushel Basket N 8 sides	55
P EI	Beaded Shell mug	65
M EI	Kitten cup & saucer	190
B EI	Fentons Thistle banana bat	175
DM EI	Butterfly & Berry water pitcher	150
S EI	Soda Gold water pitcher	250
G EI	Millersburg Multi Fruits & Flowers punch bowl & base	1000

Bernie Mahn, 1001 Rock Rd, Desoto, Mo 63020 PH 314-586-6226

B EI	Stag & Holly ftd bowl	175
M EI	Carnival Holly 9" bowl	68
M EI	474 punch bowl base	65
M EI	474 punch cups 4 ea	16
M EI	Lustre Rose ftd orange bowl	55
M EI	Open Rose sm berry bowls 6 ea	20
M EI	Fashion punch cups 2 ea	18
G EI	Vintage 8" bowl RCE	40
A GI	Stippled Rays hat	28
G EI	Stippled Rays compote	30

Lucile Britt, 3048 Tamarak Dr, Manhattan, Kansas 66502 PH 913-539-1933

G EI	Wreath of Roses punch cup Persian Med Int	30
M EI	Hobstar & Feather punch cup	28
M EI	Hahlia creamer	65
M EI	Dahlia spooner	60
B GI	Two Flower rose bowl rare	85
M EI	Two Flower rose bowl	65
G EI	Memphis punch cup	35
PO EI	Petals & Fans sauce dish	35
M EI	Star & File wine	40
M EI	Harvest Flower tumbler	95

have many choice tumblers call or write wants

Valmer Cross Sr., Prattsville, N Y 12468 PH 607-588-6698

S EI	Diamond Ring 10" bowl	40
M EI	Stork & Rushes mug	25
M EI	Blossoms & Spears 8" plate	20
DM EI	Fashion 7 pc water set	250
LM EI	Ship & Spears 8" palte	20
M EI	Dutch Mill 8" palte	20
G EI	Persian Medallion 6 1/2 bowl	25
M EI	Long Thumbprint creamer	20
M EI	Long Thumbprint sugar	20
P EI	compote no pattem 5" high	30

J. G. Muehlbauer, 7051 LaCosta Ln, Citrus Hts, Ca 95610 PH 916-355-2455 days
916-723-2852 916-723-0124 evenings

AO	N Peacocks on Fence bowl	395
AO	Three Fruits collar based bowl	375
AO	Fruits & Flowers ftd bowl	345
PQH	HOACGA Souvenir whimsy corn vase only four made	200
AO	Draperly rose bowl	195

36

Barbara Nelson, RFD 4 Box 155, Laconia, N H PH 603-293-7246

DM EI	Peacock at Fountain 7 pc water set N mint	325
LM EI	Grape & Cable 6" bowl	20
P GI	Leaf & Beads rosebowl N	55
P EI	Diamond Point 10 1/2 vase elec b irid	40
A EI	Dragon & Lotus 8" bowl ruffled edge	40
G EI	Vintage compote 6"	35
M EI	Imperials Heavy Grape 9" master bowl	30
M EI	Octagon wine decanter no stopper	35
G EI	Panneled Holly bon bon N	45
B EI	Orange Tree shaving mug	45

Lorene & Al Sebaugh, 9116 Fort Donelson Dr, St. Louis, Mo 63123 PH 314-843-6122

A EI	Diamond Lace water set 3 tumblers	275
DM EI	Grape Arbor tankard water set 6 tumb	360
A EI	Maple Leaf water set 6 tumblers	340
A EI	Good Luck plate	165
W EI	Holly plate	165
G EI	Strawberry plate	130
G EI	Open Rose plate	130
A EI	Lotus & Grape plate	195
A EI	G/C tankard pitcher 1 tumbler	675
M EI	G/C water set 6 tumblers	390

J. Blackburn, 408 Military Dr, Coeur D' Alene, Id 83814 PH 208-667-2908

W EI	Peacock on Fence plate	195
B EI	Persian Medallion 7 1/2 plate	72
A EI	Star of David Bows bowl	50
M EI	Three Fruit flat plate scratch	52
M EI	Horse Medallion fluted bowl	70
M EI	Orange Tree bowl	32
A EI	Nautilus	185
M EI	Peacock & Urn compote	35
B EI	N Peach tumbler	62
G EI	Primrose 10" bowl	65

37

Frances Gannon, 8743 Branton, Highland, Ind 46322 PH 219-923-8134

G EI	Millersburg 6" Blackberry Wreath ruffled bowl	40
G EI	Scroll Embossed 9" plate tiny chip	35
AO EI	Three Fruit bowl tiny chip	195
R EI	Blackberry hat sm under rim flake	110
M EI	Orange Tree mug (4)	18
M EI	Golden Harvest wine stopper only	30
DM EI	Swirl tumbler (N)	15
P EI	Singing Bird mug sl side roughness	45
W EI	Rose. Show bowl sm rim flake	130
P EI	Basket Weave plate (N) no top pattern	35

Lance Hudhall, 2407 A Snark, Rome, N Y 13440 PH 315-336-7964

M EI	Pony bowl	55
M EI	Stag & Holly 9" ftd plate rare (Sept HOACGA bulletin pg 11)	325
M EI	Twins fruit bowl base only	30

Paul Jankauer, 5 Court of Overlook Bluff, Northbrook, Ill 60062 PH 312-272-444

M EI	Pinecone 6" plate	30
P EI	Beaded Cable rosebowl	85
IG EI	Pony bowl inter heat check rare color	150
P EI	G/C handgrip plate	55
M EI	Dragon & Lotus bowl 9"	35
P EI	Scales plate 6"	30
G EI	G/C 9" adv plate Old Rose	140
BO EI	Singing Bird mug 2nd one reported in this color	1500
P EI	Nesting Swan radium finish	245
P EI	Pansy bowl 9"	30

Alex Knepper, 3427 Jackson, Sioux City, Ia 51104 PH 712-258-5671

P EI	G/C 8" bowl	38
BO EI	Daisy Wreath 9" bowl	175
EI	Pastel hat 3"	22
CLAM EI	Vintage handle sandwich plate	42
W EI	Leaf Chain	55
M EI	Thistle & Thom ft creamer	18
B EI	Strawberry bon bon	18
PO EI	Bells & Beads 7" bowl	23

Pat Call, 34 Lovell Rd, Stratham, N H 03885

SASE for list of Carnival Glass for sale

Charlie Wiltshire, 4603 22nd Ave, Kenosha, Wi 52140 PH 414-654-5249

M EI	Kittens cup and saucer	150
IB EI	Thin Rib 11" vase (N)	90
M EI	Panther ftd ruffled top berry bowls 6 5"	175
M EI	Crab Claw tumblers 4 scarce	200
IG EI	Drapery 9" vase (N)	50
B EI	Pond Lily bon bon slt roughness on collar	40

Barbara Farmer, RD 5 Box 462, Wheeling, W V 26003 PH 304-336-7689

AO EI	N basket round	225
S EI	N basket 8 sided	85
M GI	Pine Cone plate	40
IB EI	Fine Cut & Roses rose bowl sm flake on ft	95
B EI	N basket 2 feet repaired	45
AO EI	Beaded Cable rose bowl som wear inside	120
B EI	8 sided basket mold roughness around top	65

Ruth Schinestuhl, 55 Natalie Terr, Absecon, N J 08201 PH 609-641-1814

M EI	Singing Birds mug	60
P EI	Strawberry bowl	60
P EI	Star of David & Bows	55
M EI	Butterfly & Berry sugar	45
M EI	Stippled Peacock on Fence bowl	85
PO EI	Petals stippled dome ft bowl	75
W EI	Nippon bowl	95
M EI	Trout & Fly bowl	225
AO EI	Good Luck bowl	650
AQ EI	Sailboats sauce	100

Martin Schoettler, Box 188 RD 3, Sewell, N J 08080 PH 609-589-4325

A EI	Springtime spooner (N)	190
M EI	Raspberry milk pitcher (N)	65
G EI	Leaf & Beads nut bowl (N)	55
A EI	G/C covered compote (N)	450
M EI	G/C c-okie jar (N)	260
M EI	Raspberry sauce boat (N)	45
PO EI	Fan sauce boat (N)	65
B EI	Peacock & Urn 9" bowl Fenton	75
A EI	Blackberry Wreath 9" bowl Millersburg radium finish	85

Bonnie Parkhurst, Rd 1 Box 74, Oneida, N Y 13421 PH 315-363-3747 aft 5

M EI	Heavy Grape Imperial lg bowl	24
P EI	Puzzle ftd compote	36
P EI	G/C (N) punch bowl base med size	20
M GI	Maple Leaf sm stemmed bowl 4 1/2	14
G EI	Imperial Grape wine decanter no stopper	40
G EI	Windmill tumbler	30
M GI	Ships & Stars plate	15

40

John Manhart, 405 Boone St, Washington, Mo 63090 PH 314-239-5143

B EI	Floral & Grape pitcher	180
M EI	Floral & Grape pitcher	70
M EI	Dragon & Strawberry bowl	325
M EI	Little Fishes bowl 10"	95
G EI	Peacock & Grape spat ftd bowl	55
B EI	Peacock & Urn ice cream bowl	80
G EI	Acorn Burr punch bowl base	85
IG EI	HOACGA souvenir whimsy hat pin holder Jack-in Pulpit 1980	285
W EI	HOACGA hat pin holder souvenir 1980	140
A EI	Trout & Fly bowl	290

Marion Hartung, Box 69, Emporia, Ks 66801 PH 316-342-6200

P EI	N/G hatpin holder	170
B EI	N Bakset	85
G EI	Sailboat 6" bowl	90
B EI	Persian Med bon bon	36.50
B EI	9 3/4 Butterfly & Berry bowl	95
PO EI	Four Flower plate 6 3/4	55
AQ EI	9 1/4 Jack-in-Pulpit vase	80
B EI	Leaf Chain 7 1/2 plate	70
PO EI	Hearts & Flowers 9" bowl	145
W EI	Corn vase	185

Clifford Decker, RD 1 Box 209, Whitney Point, N Y 13862 PH 607-692-3762

W EI	Grapevine Lattice plate 7"	75
M EI	Horseheads Med Jack-in-Pulpit bowl	105
M EI	Caroline Dogwood bowl 9 1/2	40
M EI	Acorn bowl 7 1/2	27
LM EI	Orange Tree powder jar w/lid	60
M EI	Orange Tree goblet	90
AMB EI	Pansy pickle dish heat check	30
A EI	Little Stars bowl 7 1/2	90
A EI	Little Fishes bowl 5 1/2	60

41

Eva Becker, 12 Sherwood Rd, West Hartford, Ct 06117 PH 203-232-1027

M EI (N) G/C punch cup	25
M EI (N) Springtime spooner	100
B EI Panther sauce ftd small	75
M EI Fashion punch cups 6 ea	15
B EI Orange Tree powder w/lid	75
M EI Imperial wine goblet	30
M EI Grape & Gothic Arches spooner	45
W Constilation compote frosty seafoam ext	65
M EI Petals compote Hartung bk 4	40
M EI Hobnail Soda Gold spittoon	35

Mary Kesterson, 3020 Mesa Rd, Willow Park, Tx 76086 PH 817-441-8410

AO Bushel basket round (N)	240
R Leaf Chain 9" bowl	345
PO Estate creamer	70
B Horses Heads flat bowl	95
M B & B covered sugar	80
W Persian Garden ice cream bowl 11"	195
M Grape Delight rose bowl	65
M Horses Heads flat bowl	85
IB Grape Arbor tumbler (N)	125
IG Corn vase (N)	225

Dick Wetherbee, 847 Stafford St, Rochdale, Ma 01542 PH 617-892-4420 aft 6 EST

PO EI Single Flower 9" ruffled bowl	42
M EI Acanthus 8" bowl	40
W EI Hall lamp globe cone shaped 4" opening	28
P EI Petals compote (N)	55
M EI Lattice & Daisy 7 1/2 vase daisy in base	24
P EI Millersburg Hanging Cherries 7" bowl ice cream shape	95
G EI Tree Trunk 8" vase	25
M EI Flute 3 1/2 x 4 jelly compote Millersburg	18
PO EI Target (Hobnail & Rib) 12 1/2 vase	42
B EI Rose Show 9" plate pin head on underside super color	250

42

Ernest P. Lanningham, 3020 Country Sq. Dr. #1218, Carrollton, Tx PH 214-245-1602

M EI Two Flowers 9" ftd plate	575
AO EI Dandelion mug	450
A EI Floral & Grape pitcher w/2 tumblers	250
M EI Goddess of Harvest bowl very rare	4200

Larry Keig, 501 Union St, Fayette, Ia 52142 PH 319-425-4467 Eve

A EI Scales (Westmoreland) sm plate	27.50
M EI Persian Garden sm plate	55
A GI Peacock Tail low bowl	22.50
G GI Imperials Grape wine decanter no stopper	50
G EI Singing Birds tumbler	30
G GI Double Star tumbler	40
P EI Grape (N) powder jar no lid	27.50
A EI Fruits & Flowers sm berries ea	25

Ray Hitchcock, RR 1 Box 301, Winterset, Ia 50273 PH 515-462-2074

M EI Chrysanthemum spatula ftd bowl	45
A EI Stag & Holly spatula ftd bowl	90
A EI Imperial Grape tumblers 2 ea	30
P EI Wishbone & Spades 6 1/2 plate rare	120
B EI Butterfly & Berry 5 pc table set no creamer pin hd on sugar bottom all	400
A EI G/C tumblers N outstanding color all	175
B EI Vintage 3 ftd nut dish	55
M EI Lattice & Daisy 7 pc water set	250
A EI G/C berry dishes sm thumbprints N ea	30
M EI Captive Rose bowl	35
M EI Fashion creamer & sugar both	80

43

WANTS

Burney Talley, 1814 Slate N W Albuquerque, N M 87104 PH 505-242-1261 eve

- A Fieldflower tumblers 6
- G Fieldflower tumblers 5
- B Milady tumblers 6
- M Heavy Iris tumblers 6
- P Singing Birds tumbler 1

Mrs. Wm. McGarrah, R 1, Lowell, Ar 72745

Any pieces in Peacock at Fountain reasonable
Town Pump I have trough white opal or would sell trough

Joyce Davenport, 511 Fox Trail, Greenville, Tx 75401 PH 214-454-6809

- P Wishbone bottom for epergne
- M Mylady powder jar bottom
- M Octagon pitcher
- M Octagon wines
- M Vintage wines 2

Charlotte Tweddell, 4908 Darnton Ln, Louisville, Ky 40216 PH 502-447-1670

IG Three Fruits bon bon (N)

Helen Greguire, 103 Trimmer Rd, Hilton, N Y 14468 PH 716-392-2704

M G/C cover for compote will buy a complete one with damaged bottom

Lee Markley, RR 1, Mentone, In 46539 PH 219-353-7678 eve or weekends

P Millersburg Country Kitchen bottom for butter dish

44

Robert Larsen, 3214 19th St, Columbus, Ne 68601 PH 402-564-2304

W H.O.A.C.G.A. 1980 hatpin holder only 19 made and were auctioned off at the 1980 convention.
Formal happin holder any color Pictured on page 37 in Edwards Rarities in Carnival Glass. Will pay top dollar

Charles Perry, 8641 Lakeshore Dr, Southhaven, Ms 38671 PH 601-342-1694

M Stork & Rushes butter base only
P Butterfly & Berry butter top only

Jos Mello, 535 Fish Rd, Tiverton, R I 02878 PH 401-624-2174

M Acorn Burr tumblers need 5
G Acorn Burr punch bowl top
M EI Acorn Burr punch bowl top
P Imperial Grape punch cups need 4
G Butterfly & Fern tumblers need 2
M Horse Medallion plate
B Horse Medallion plate
A Wreath of Roses base to punch bowl
W Orange Tree butter base

Lee Bryant, 1R 1, Decatur, Ind 46733

M Tiger Lily tumblers need up to 5
M Fentonia 5" ftd bowl up to 3
G Persian Medallion 10" round edge bowl not folded
B Butterfly & Berry 5" ftd bowl plain int up to 4
B Maple Leaf sugar lid
M Peacock at Fountain large berry bowl N
G G/C master berry bowl with thumbprint N
G G/C 5" berry bowls with thumbprint up to 5 N
P Strutting Peacock sugar bowl have lid (Westmoreland)
B Orange Tree powder jar bottom only

45

Lucile Britt, 3048 Tamarak Dr, Manhattan, Ks 66502 PH 913-539-1933

V Northwoods Flute sherbert
B Dandelion mug
B Fisherman mug
M Shot glass & wine
PO Small swan
A Leaf & Little Flowers round compote
Any color Multi Fruits & Flowers compote or sherbert
S Singing Birds mug
M Northwood Peach tumbler
Any unusual patterns wines & cordials

S. F. Kell, 919 Thomasville Rd, Houston, Mo 65483 PH 417-967-4414

B Stork & Rushes water pitcher

Bill Richmond, 618 East 2nd, Ottumwa, Ia 52501 PH 515-682-7791

P G/C stopper for perfume bottle
P Flute spooner

A C Dickey, 144 Chandler St, Vacaville, Ca 95688 PH 707-448-9386

R Orange Tree bowl
R Carnival Holly 9" bowl
A Courthouse bowl
G Big Fish bowl

Lance Hudnall, 2407 A Snark, Rome, N Y 13440 PH 315-336-7964

B Orange Tree punch bowl base only
M G/C powder jar lid only
P Springtime tumbler

46

Paul Jankauer, 5 Court of Overlook Bluff, Northbrook, Ill 60062 PH 312-272-4440

Would like to buy "collections" large or small, priced for resale

Mary Herren, 520 S Berry, Morganfield, Ky 42437 PH 5102-389-3121 eves

M 474 pitcher
M Floral & Grape tumblers 4

Al Rettke, 14226 East 143rd Lane, Burnsville, Mn 55337 PH 612-432-7489

IB Singing Birds mug
W Singing Birds mug
P Singing Birds mug stippled
W Peacock at the Fountain tumbler
IG Peacock & Urn sm ice cream
Peacock at the Fountain compotes any

Martin Schoettler, Box 188 RD 3, Sewell, N J 08080 PH 609-589-4325

A Acorn Burrs punch bowl base
A Inverted Strawberry tumblers need 2
A Butterfly & Fern tumblers need 2
M Octogan tumblers need 2
A Singing Birds sugar lid
A Millersburg Diamond tumblers

Clifford Decker, RD 1 Box 209, Whitney Point, N Y 13862 PH 607-692-3762

M Fashion tumbler-need 6
B Painted Cherries pitcher
A G/C (N) pitcher
P Peacock at Urn 5" ice cream need 1
P Singing Birds 5" bowls need 3 (N)

47

Mary Kesterson, 3020 Mesa Rd, Willow Park, Tx 76086 PH 817-441-8410

- R Dragon & Lotus bowl
- W Fine Cut & Roses rose bowl or any other color
- AO Hearts & Flowers compote
- IG Bushel basket round
- IG Nippon bowl
- AO Fruits & Flowers bon bon stemmed
- W Constellation compote
- W Leaf & Beads rose bowl

Larry Keig, 501 Union St, Fayette, Ia 52142 PH 319-425-4467 eve

- M "Iowa" souvenir pieces any locale
- G Pulled Loop vase 12"
- DM Fantail & Hearts & Trees sauces

LaJoy Hauser, 147 Canyon Creek Dr. San Antonio, Tx 78232 PH 512-494-2914

- G G/C tumbler N Thumbprint need 3
- G Butterfly & Fern tumbler need 2

Ted Sheibley, 304A Hollcrest Dr, New Cumberland, Pa 17070 PH 717-938-6417

Any color Ivy town pump

ORDER FORM FOR 1983 H.O.A.C.G.A. SOUVENIR



PLEASE MAKE CHECKS PAYABLE TO H.O.A.C.G.A. AND SEND TO THE SECRETARY:

Diane Treff
13646 Leavenworth Rd.
Kansas City, Kansas 66109

WILL PICK UP:

1983 CUSTARD GLASS WITH MARIGOLD OVERLAY LOVING CUP(s) AT \$40.00 EACH.

PLEASE MAIL:

1983 CUSTARD GLASS WITH MARIGOLD OVERLAY LOVING CUP(s) AT \$40.00 EACH PLUS \$3.00 POSTAGE FOR EACH LOVING CUP

This is a beautiful piece of glass and truly looks like a trophy. This loving cup is in custard glass, with marigold overlay, and is beautifully iridised. This year a limited supply is being made so please order as soon as possible.

PLEASE PRINT NAME AND ADDRESS
