

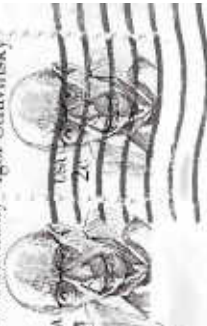
H. O. A. C. G. A.
DONALD E. KIME
BULLETIN SECRETARY
1202 W. 4th ST.
HAYSVILLE, KANSAS 67060



March 1983
S M T W T F S
6 7 8 9 10 11 12
13 14 15 16 17 18 19
20 21 22 23 24 25 26
27 28 29 30 31



Igor Stravinsky Igor Stravinsky



FIRST CLASS



Heart of America Carnival Glass Association, INC.

MEMBERSHIP JUNE TO JUNE
\$10.00 PER COUPLE OR SINGLE

PUBLISHED 15th OF
EACH MONTH

PRESIDENT: GEORGE O. MCGREW JR.
6800 WOODWARD
OVERLAND PARK, KANSAS 66204
913-262-8822

VICE PRESIDENT: GEORGE BOLLES
5204 CATALINA
SHAWNEE MISSION, KANSAS 66205
913-432-5438

TREASURER: ELIZABETH BOLLES
5204 CATALINA
SHAWNEE MISSION, KANSAS 66205
913-432-5438

SECRETARY: DIANE TREFF
13646 LEAVENWORTH ROAD
KANSAS CITY, KANSAS 66109
913-721-2917

BULLETIN SECRETARY: DONALD E. KIME
1202 W 4th ST.
HAYSVILLE, KANSAS 67060
316-524-3123

At promptly 2:00 P.M., February 27, 1983, President McGrew called the meeting of the Heart of America Carnival Glass Association to order. President McGrew welcomed everyone and introduced two guests from Warrensburg, Missouri. The members present also welcomed Edna Meyer and Julia Sibert. There were 27 members in attendance.

The minutes of the last monthly meeting were read, and approved as read.

Elizabeth Bolles stated that although it was stated in the minutes that she would transfer the funds from our repurchase agreement to our checking account, she had not done so. The repurchase agreement had been reinvested at 8%. The treasurers report was as follows: Cash on hand as of 1-20-83 was \$11,563.83. Total receipts were \$4312.44. Total disbursements were \$2626.27. Leaving a balance of \$13,250.00 as of 2-26-83. The report was accepted as read and placed on file.

Roland Kuhn gave an interesting and informative report of his trip to the Fenton Glass Company. Roland announced that although they had encountered some difficulties in the production of our 1983 Loving Cups, the end result was well worth the work. Roland also announced that they had produced twenty eight whimsies. These too, all choice pieces.

Roland then presented the members present a sample of the table favor mug. The mug was produced by the Mosser Glass Company. The club had ordered the mug be marigold. The Mosser company sent amber. The question arose as to the adjustment in price, if any, by the Mosser Glass Company for the change in our order. President McGrew and Roland both stated that they had not requested an adjustment to the price. Members present agreed that the amber mugs were very nice pieces. The mugs were accepted for this years' table favor mug. There was discussion of going to another company another year to acquire the marigold mugs, if still desired.

Convention Chairman, Robert Grisson announced that the Motel had received 104 reservations. He noted that William Heacock and Bill Edwards will not be at the convention. There was some correspondence read by Mr. Grisson pertaining to the convention.

There was some discussion as to the method the Holiday Inn uses for accepting reservations. It seems some members have experienced some dissatisfaction. Once again the discussion led to finding another location for our convention in years' to come. The question of the importance of the glass front windows arose. President McGrew once again stated that he did check into other accommodations, including the Holidome in Lawrence, Kansas. The problem being the

glass front windows and the guaranteeing of reservations for the week of our convention.

President McGrew read a report forwarded to him by Tom Burns, auctioneer for our convention. Tom revealed that he would have between 225-250 pieces, from the collection of Don and Elsie Weiss and various other sources. Brochures to be out the first of April.

At last word the completion date for the Holiday Inns' construction to be the first of April.

Secretary Diane Treff, announced that as to date the number of Loving Cups sold stands at 143. She also reported on the cost of advertising in the Antique Trader, with a display ad, in regards to our convention. With little comment from the floor, President McGrew tabled the decision. The Board to decide on size, date, and amount to be spent.

Judges for the room displays have not been selected. It was requested by President McGrew and Robert Grisson, that if any member had a suggestion as to possible candidates for these positions to please notify either of them. These persons cannot be members of the Heart of America Carnival Glass Association or any other Carnival Glass Club.

President McGrew requested that everyone bring a piece of carnival to our next monthly meeting.

Mike Basey, stated that as of yet he had nothing to report on the candidates for the Board offices for the 1983 year.

With no further business, President McGrew adjourned the meeting. The next meeting to be at the Holiday Inn of Overland Park, Kansas. Meeting to begin at 2:00 P.M.

Diane Treff, Secretary

George McGrew Jr., President

Your 1983 souvenirs have been made. Boy.. I will tell you this was a job and a half this year. There is a lot of blood, sweat and tears put into the souvenirs this time. I have not decided exactly yet but either the first complaint or the one that complains the loudest gets the job next year. Anyway I do feel that everyone should be real happy with this souvenir.

Mr. Fenton called me that they would start on the souvenirs on February 7. So I did some fast switching at work to get time off to be there. So off I went. Since the Rineharts are only about 90 miles from Williamstown, I decided to run down there on Sunday afternoon to see their collection. If you are ever in their area do stop by and see them and their collection. All of you know Grace & Byron. You know that you will be welcome and to see all of their collection is quite rewarding.

Up early on Monday morning and off to the factory to start on the souvenirs. Mr. Fenton and I went out early to see the first drop of glass put into the mold and to see that everything was ready. You could see the excitement building in all of the workers, when ever something different like this is to be made. You can tell it as all of the workers gather around to see what is going on. Of course only the best workers are privileged to get to work on these special projects. Things started to go. First the gatherer to put in the mold. In it went and down went the plunger to start a long day, then the carriers to the glory hole to reheat, then a shaper, then to the sprayer. At the sprayer where the marigold overlay went on and then the iridising, then back to the glory hole to fire it and back to the shaper and then to the man to put it in the dryer. In two hours you would see if you got everything right or not. Things looked real good while the glass was hot, so we were going great guns. When they came thru the dryer it was a different story. Those first ones came out looking like there was no marigold on them at all. The iridescence was good but no overlay. We had kind of expected it though and had the spray man to spray it a little darker. About the first half of that days run had to be rejected and broken. Normally we would have gotten around 300 or more from that first pot of glass. Mr. Fenton and I at last did get away from the factory after 7:30 P.M. that evening. We only had salvaged something a little over one hundred good souvenirs. We knew that the next day had to be better. But I was up before 6 to get a full day in. We were both at the factory about seven. Things were all ready again. Well we thought we had all the bugs worked out, so nothing could go wrong now. We were wrong. I think everything that could gone wrong happened that day. The marigold overlay burned on us. Some went out of shape. The iridescence burned you name it. I do not know when I ever put in two harder days. We ended up that day with a total of only 360 good souvenirs. Normally with as much glass that was in the pots we get 600 to 650. This meant that they had to make another batch to run so we could get our 450 to 500.

I know that this has been the hardest and best souvenir that has ever been made. You see, before we had used a color glass and only had to put the iridescence on the glass. This we have one color glass then overlaid with marigold spray and then the iridising over that, and boy that is a horse of a different color.

The one thing I will say. There is a special one for each one of you. Like I say, if you have a complaint try making the souvenirs one year and see what a job it is. This is true for any of the jobs that keeps this club running. Try one of these jobs for the club next year and really see what real work goes into your club.

I am real proud of the souvenirs and the whimsies. The whimsies are great again this year.

If you have not ordered your souvenirs yet you should get your order in. I feel that we may be out by convention time. In less than one month there is already over one hundred sold and you know we will only have around 450 this year.

Roland Kuhn
Souvenir Chairman

We are happy to announce that the H.O.A.C.G.A. convention auction will consist primarily of pieces from the collection of Don & Elsie Weiss plus pieces acquired from various sources. Among those pieces offered here are a few:

- | | |
|------------------------------------|---|
| G Peter Rabbit plate | Milk Glass Pearly Dots plate |
| M Stag & Holly ftd chop plate 12" | M Peter Rabbit bowl |
| PO Pods & Posies chop plate 11" | IB Peacock at Urn master ice cream |
| P Wishbone & Spades chop plate 11" | IG " " " " " |
| G Wide Panel epergne | PW " " " " " |
| AQ Stag & Holly lg bowl | PM " " " " " |
| R Dragon & Lotus bowl | DM " " " " " |
| G Dragon & Strawberry bowl | EB Peacock at Urn ice cream master & sauces |
| R Stag & Holly bowl | |
| M Cherry Cable water pitcher | |

R Holly hat also one that is ruffled A detailed brochure will be available sometime in April. Further info can be obtained by contacting Mr. Tom Burns, RR 1, Bath, New York

AO Beaded Cable rose bowl

HELP NEEDED

Our Historian for the HOACGA club has been working on the clubs scrap books and is in need of the following items:

December 1978 Bulletin

If we can come up with this particular issue of the bulletin we will have a copy of every one printed since the beginning of the club.

We need the ribbons that were on the name tags for all the years except the years, 1979-1980-1981. If anyone would like to donate the above material to the club please contact our Historian, Faye Ronk, 5234 Outlook, Mission, Ks 66202. Any help we can get on these items will be greatly appreciated.

Faye Ronk
Historian

SPECIAL NOTICE

For the next two issues of the Bulletin April and May it is very important you have all your articles to me by the 1st of the month. I will be sending the original copy to the printer on the first day of the month without any reservations. As you know the convention is coming up in April and it is most important to get that issue out by the 15th of the month without fail.

Editor

***** CORRECTION *****

The American Carnival Glass convention has been previously reported in the Bulletin as being June 7-8-9. This was incorrect the dates should have read JULY 7-8-9. Sorry about that American, thanks to a sharp reader the error was caught and reported to me to be changed.

Editor

1983 H.O.A.C.G.A. CONVENTION

The 1983 Convention will be held April 22, 23, and 24th, 1983 at the Mission-Overland Park Holiday Inn, 7240 West 63rd St., Overland Park, Kansas 66222. This is the same motel as previous conventions.

A motel reservation card was inclosed in your January bulletin. Reservations will only be made by the use of the card, no telephone reservations will be accepted. If you have not made your reservation yet, send in your card now...

In the January bulletin it was reported that Louis & Lois Bradford of Paducah, Kentucky, would have a program on Red Carnival. Louis had heart by-pass surgery the later part of December so he had to cancel out. We will try to schedule an alternate program that will be as equally informative.

The following is a complete convention schedule:

- Thursday - Registration - Holidome - 2:00 to 4:00 P.M.
April 21
- Hospitality Room - Holidome - 2:00 to 4:30 P.M.
- Reception - Santa Fe Room - 4:30 to 5:30 P.M.
- Meet our guest speaker, Ray Notley, and other special guests. Welcome by President.
- Pattern identification, panel discussion and questions - Gaslight Room - 7:00 P.M.
- Friday - Registration and Souvenir pick-up - Holidome
April 22 8:00 to 10:30 A.M.
- Display and discussion - Gaslight Room - 9:00 A.M.
- Display and Discussion Old and New carnival patterns - Santa Fe Room - 10:30 A.M.
- Dorothy Taylor will show and discuss differences between old and new patterns and explain the differences between the two.
- Registration and Souvenir pick-up - Holidome
12:00 to 1:30 P.M.

- Annual business meeting - Gaslight Room - 2:00 P.M.
Judging Room Display - 3:00 to 5:00 P.M.
Hospitality Room - Holidome - After business meeting
- Attitude adjustment period - Santa Fe Room
6:00 to 6:30 P.M.
- Banquet - Holidome - 6:30 P.M. cost \$15.00 per person

Award of Room Display winners
Speaker - Mr. Ray Notley will speak on English and Foreign-made carnival.

Auction of whimsies.

- Saturday - Registration and Souvenir pick-up - Holidome 8:00 to 9:00 A.M.
April 23
- Auction - Holidome - 9:30 A.M.
- Italian Night - Spaghetti Dinner - Holidome - 6:00 P.M.
Cost - \$8.00 per person.
- Entertainment starts after dinner.
Dancing 8:00 to 11:00 P.M.
- -SPECIAL SURPRISE- 7:30 P.M.
- Visit members room and make those last minute bargain buys.
- Sunday - Breakfast - 7:30 A.M. to 9:30 A.M. - Cost-Free
April 24
- Depart for home and another year of good remembrances of another enjoyable week-end spent at a H.O.A.C.G.A. Convention.

Dorothy Taylor will be presenting a program for us on identifying the difference between some of the old reproduced items. Dorothy needs some old pieces for comparison. If anyone has any of the pieces listed below and would be willing to bring them to the convention, for her use in the program, please let Dorothy know what you could help with. Write to : Dorothy Taylor, 7809

Arlington St., Raytown, Mo 64138 (Tel. 816-353-5722).

Farmyard	Millersburg Cherry sugar & creamer
Heavy Iris water set	Chrysanthemum plate
Rambler ROse water set	Daisy basket
474 water set	Field Flower water set
Checkerboard water set	God & Home water set
Floral Panel vase	Imperial Grape wine decanter
Homestead plate	Vintage Nut bowl
Pony bowl	Star & File wine decanter & glass
Sunflower pin tray	Loganberry vase
Leaf & Orange Tree bowl	Maple Leaf water set
Stork & Rushes water set	Swan master salt
Tiger Lily water set	Windmill water set
Zipper Loop lamp	

A reminder to bring your unusual finds to be identified and/or to share with the others at the Convention.

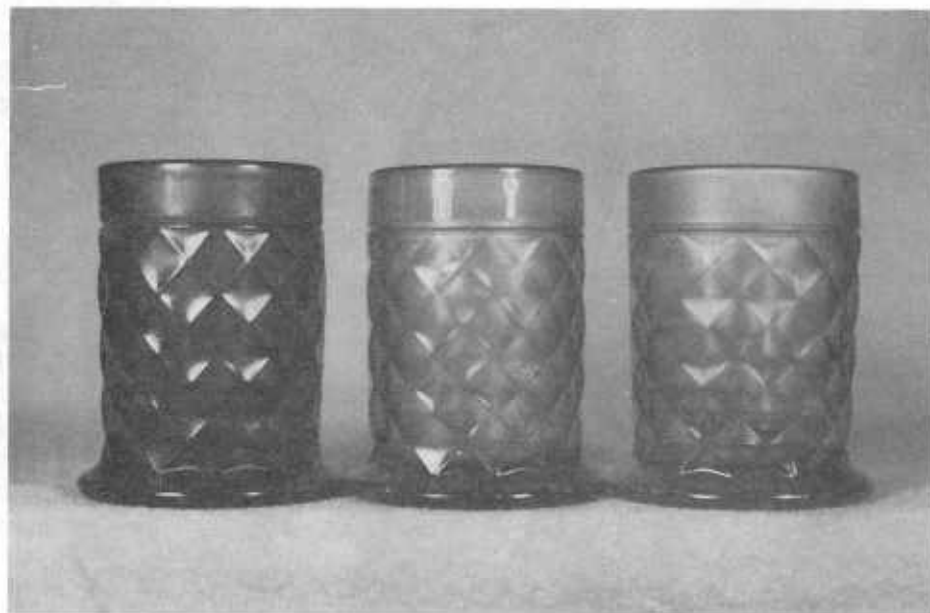
The program will be on Thursday evening, April 21st.

GOOD LUCK,
Robert Grissom
Convention Chairman



CONCAVE DIAMONDS IN THREE BEAUTIFUL COLORS

Here we have an unusual stretch glass type tumbler that comes in three different colors. The sapphire blue tumbler is somewhat darker than the ice blue shade that is found on such Northwood tumblers as Oriental Poppy, Raspberry and Wisteria. It is actually very close to Fenton's celeste blue. On occasion I have heard it called by that name. This shade of blue is the color most commonly found in the "Concave Diamonds" pattern. The beautiful vaseline color "Concave Diamonds" tumbler is rarely found however, and is certainly a beautiful piece of iridised glass. Richard Owens, author of the popular carnival glass tumbler book, rates the vaseline "Concave Diamonds" tumbler in his second group of ten most desirable tumblers. I would consider the vaseline tumbler and water pitcher as not only rare, but also beautiful and most desirable. Another color, which is very rarely seen, is what we call olive green. Stretch glass collectors call this color russet. Tumblers as well as the pitcher and the night set, in this color, are definitely rare. I consider the "Concave Diamonds" as an especially fine pattern for tumbler collectors because it adds a great deal of color to a tumbler collection. Only Barbella, another rarely found Northwood stretch type tumbler and a few "tumble up"



Most advanced tumbler collectors, as well as many beginners, will include this shorter "tumble up" type of tumblers in their collections. Nearly all of the tumbler collections, that I have viewed, include at least one of the above "Concave Diamonds tumble up" tumblers or one from some other night set pattern. These little "Concave Diamonds" tumblers that are shown above, are part of the No. 559 bedroom jug and tumbler two piece sets. They have a wide flared out base or bottom which enables the tumblers, when not in use, to fit down inside the small jug upside down. The flared out base rests upon the top rim of the water jug to keep it from falling down into the jug. These little tumble up "Concave Diamonds" tumblers were made in the same three colors that are found in the taller type tumblers. In addition, I have also seen one of these in an opaque bluish green color with outstanding iridescence. These tumblers measures $3\frac{1}{2}$ inches high with a top diameter of only $2\frac{3}{8}$ inches. The base flares out to $2\frac{3}{4}$ inches. A 28 point star is pressed into the underside of the base. These little gems are rather difficult to find. Occasionally one might show up in a collection that is being sold at an auction. The blue and vaseline examples were sold at the Collier auction a number of years ago. The complete two piece night set is also very hard to locate in the "Concave Diamonds" pattern. I have seen very few of these small jugs that hold these little "tumble up" tumblers.

type tumblers, can you find a tumbler that was made in true vaseline color. Both the vaseline and the olive green tumblers will add a lot of class and beauty to your tumbler collection if you are able to find one.

"Concave Diamonds" tumblers are somewhat taller than most carnival glass tumblers. They stand $4\frac{5}{8}$ inches high and the top flares out to $3\frac{1}{4}$ inches. It has a collar base that is $2\frac{3}{8}$ inches in diameter. A 32 point star figure is impressed into the underside of the base. A plain circle is found on the inside of the base. The rows of diamonds are concave and extend from the collar base up to a groove which is located one inch from the top of the tumbler. This top inch is plain and flares out quite sharply.

Northwood is considered as the maker of these pretty "Concave Diamonds" tumblers. Russell & Kitty Umbraco, stretch glass researchers and authors, state that they have copies of pages from an old 1924 Northwood glass catalog, that contains the "Concave Diamonds" No. 559 bedroom jug and tumbler set. This is what we call the tumble up or night set. Mr. Frank Fenton told me that he also has this informative literature, which at that time was displayed in the Fenton Museum. Barry Wiggins, who has done considerable research work on both stretch and Northwood glass, lists this pattern as being made by Northwood. Mr. Wiggins states that the russet or olive green color was made only by Northwood. We have in our collection an olive green "Northwood Flute" sherbert (Hartung bk 2 --pg 41) which contains the underlined "N" trademark. This is the exact color that is found on the "Concave Diamonds" olive green or russed pieces.



CONCAVE DIAMONDS
PITCHER
AND
TUMBLER



CONCAVE DIAMONDS PITCHER AND TUMBLERS

We are including several views of the "Concave Diamonds" water pitchers. You will notice that the pitcher contains a lid. Generally speaking, most carnival glass water pitchers did not contain a lid. The lids were used most often on the stretched glass types of water sets which were most popular back in the 1920's. Penton Art Glass Company also made some stretch glass water pitchers with lids back in that same era. All patterns did not contain lids that were made in that time however. When these "Concave Diamonds" water sets were distributed little coasters were provided for the tumblers to set in. The coasters were not iridised, however. I suspect that many of these coasters were broken during the years as most of the sets you see today are absent the coasters. Probably some housewives did not want to bother with them and discarded that part of the set. I have seen a number of these sets with the coasters still intact, however.

The "Concave Diamonds" pattern represents our 62nd entry in this carnival glass tumbler series. Next month we will select a tumbler that was made at the old Dugan-Diamond factory site at Indiana, Pennsylvania. This little known glass company made some very pretty carnival glass and in much greater quantities than was thought just a few years back.



VERY RARE 49'er PITCHER & TUMBLER

This is the first water pitcher that we have ever seen in the "49'er" pattern. The few pieces that we know about in this pattern have been in marigold. This pattern was made in the water set, wine set and shot glass. Probably other iridised pieces were made in this pattern, but I have not heard of them. This pitcher came from England and English stickers were on it when it was purchased here in the U.S.A. It is quite likely that it could have been made in Finland, Scotland, Czechoslovakia or perhaps England. Note the similarity of the "49'er" pitcher and tumbler to that of the "Jacobean Ranger" pitcher and tumbler. The "Jacobean Ranger" pitcher & tumbler are shown and described in the H.O.A.C.G.A. December 1982 news bulletin. Due to their rareness, the "49'er" tumblers are highly sought after by tumbler collectors everywhere.



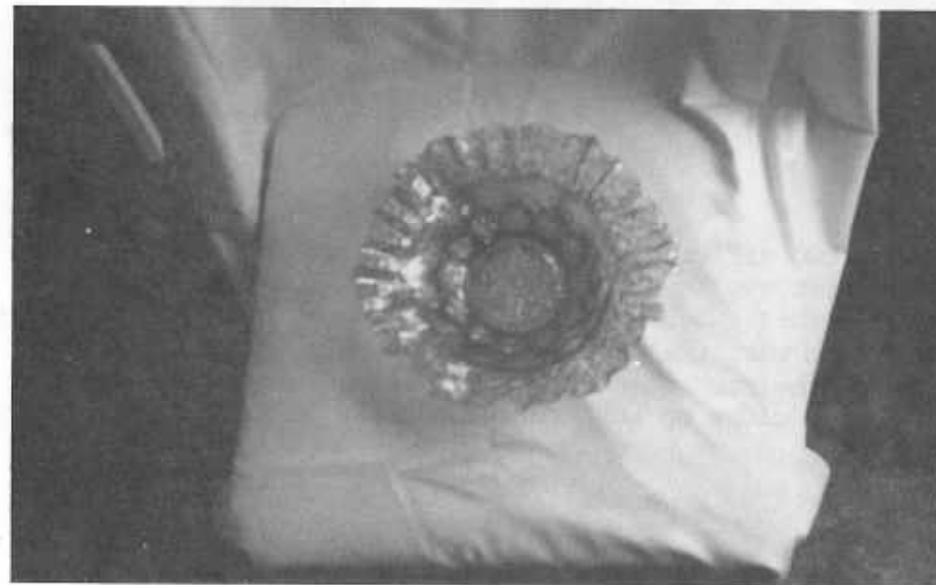
RASPBERRY IN PASTEL GREEN

The "Raspberry" water set, pitchers and tumblers, even though very nice and certainly collectable, are really not hard to find in marigold, green or purple. The one pictured above however, is in pastel green and extremely rare. I believe I know of only about four water pitchers in this color and the tumblers are next to impossible to find. I am sure there are others around, but I have not seen them. Elden & Juanita Bicksler have owned the above pastel green water pitcher since 1977 and found the matching set of six tumblers in Ohio in December of 1982. I would think the odds of finding six pastel green "Raspberry" tumblers at one time to match a pastel green "Raspberry" water pitcher would be about ten thousand to one, but it did happen. I might also mention that the pastel blue pieces in this pattern are also very desirable and quite rare. I have seen quite a number more "Raspberry" water pitchers and tumblers in ice blue than I have in ice green, however. White water pitchers and tumblers are also harder to find than are those in ice blue. Even though others probably exist, I know of only five white tumblers and only a very few water pitchers. They are definitely rare. The "Raspberry" milk pitchers in all three of these pastel colors are also very rare. While I am sure that most collectors do not give it much thought, but the cobalt blue color is extremely rare in this pattern. I know of only one "Raspberry" water pitcher and two tumblers in cobalt blue. I am sure there are others out there somewhere, but I have not seen them.



IMPERIAL GRAPE IN AMBER

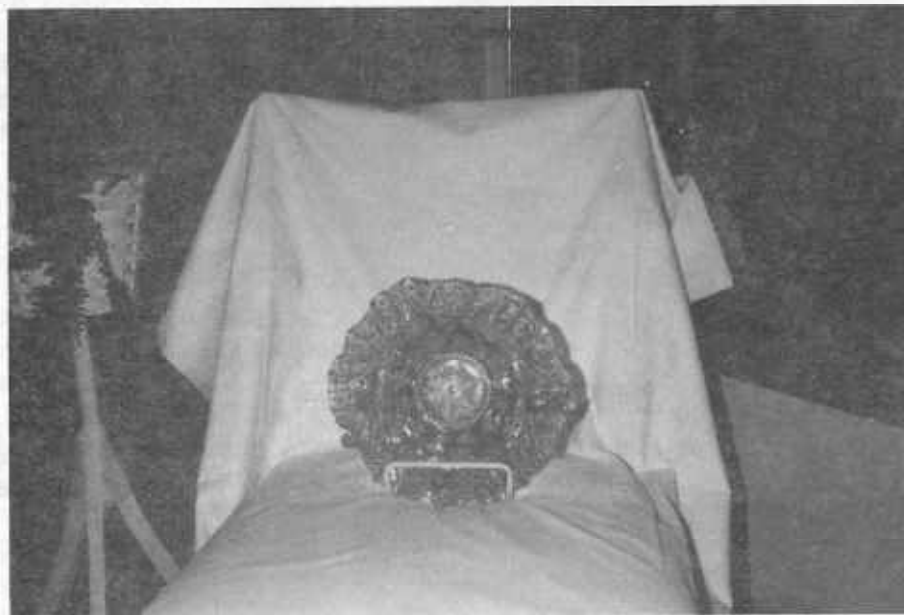
This rarely seen AMBER "Imperial Grape" water pitcher and four tumblers were found this winter by Larry Keig of Iowa. "Imperial Grape" is a frequently seen pattern, but you will only rarely see the water pitcher and tumblers in the amber color. I consider this a great find.



EXTREMELY RARE MANY STARS BOWL IN VASELINE

Elden & Juanita Bicksler also found, in the state of Ohio, this beautiful "Many Stars" bowl in vaseline. The bowl is ten inches wide and three inches high. It has the candy ribbon edge and has the six pointed star in the center of the bowl. The bowl has good rich vaseline color with beautiful marigold iridescence. The "Many Stars" bowl is super in any color, but to

find one in vaseline base glass, even adds more to this beautiful piece. The Bicksler's certainly had some happy hunting in 1982, didn't they? The writers of the Pictorial Pattern Parade and the H.O.A.C.G.A., wish them as well as all other club members, even better hunting in 1983.



We are showing you these two different pictures so that you can get a good view of it. One of the pictures is close up but not in good focus and the other one is clear but further away. I think by looking at both you can get a good picture in your mind what the piece looks like. In the further more clear picture the star can be seen which shows the six points explained in the article where as in the close up the star can hardly be seen in the bottom.

Editor

SOWERBY CARNIVAL GLASS by Ray Notley, London, England.

FLORA Float Bowl

Original Manufacturer's Name.

Not in Hartung. Listed elsewhere as ROSE GARDEN.



As you can see, the picture for this article shows the exterior of two bowls. Both were, at one time, assumed to be the same pattern. Both were thought to be ROSE GARDEN but only the bowl in the foreground is in this pattern. The bowl on the stand in the background is a float bowl by Sowerby in their FLORA pattern. This float bowl was stated to be a "collection plateau" in the ROSE GARDEN pattern which also saw further use in church when it was supposedly turned upside down and used as a stand for the ROSE GARDEN pitcher. There is a curious religious useage assigned to some pieces of Carnival that baffles me completely. However the "collection" plate is not even the pattern it is supposed to be, and the pitcher it is linked with was in fact not even made in the same country, never mind the same factory. The ROSE GARDEN pattern was made in Sweden (see seperate article elsewhere in this issue).

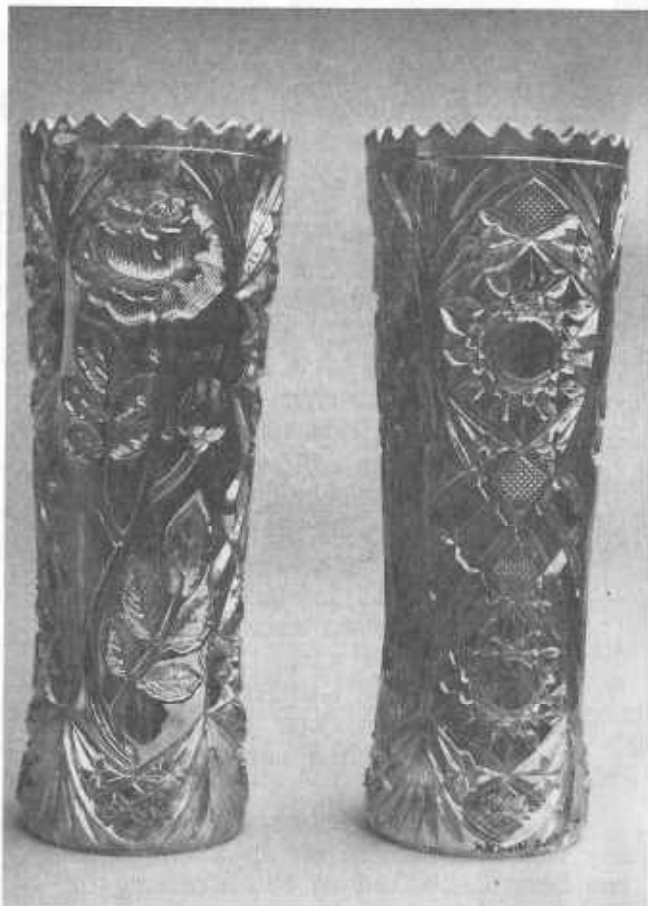
As regular readers will know, the Carnival output of Sowerby is varied to say the least with no apparent house-style or consistent finish. Some of it has been labelled as Millersburg or Imperial but here we have a further complication. A Sowerby pattern was mistaken for another similar one made in another country and the two were bound together by a religious ceremony. Well, this is the divorce. The FLORA bowl is usually a very variable blue with a thick blue/purple iridescent coating that looks amber when held up to the light. The interior is plain. It was made in 1926/1927 in limited quantities. It was reissued in acid finished non-carnival form in the 1930's with a coy lady flower "frog". A heavy and

unusual piece of Carnival that is difficult to display.

(Author's copyright reserved 1983)

ROSE GARDEN

by Ray Notley, London, England



(In this issue you will find another article showing a bowl in the Rose Garden pattern together with another rose patterned bowl by Sowerby.)

The photo you see here is of a pair of cylinder vases in the Rose Garden pattern. There is also an oval shaped vase in the same design that has been tagged a "letter vase". However this oval vase was originally flanked by a pair of cylinder vases to form a console set, sideboard set or garniture. Call it as you like. So far at least, these vases, together with a pitcher, covered butter and a stemmed sugar are all the known shapes. Rumors abound of other items such as tumblers but as far as I know, these have not been documented. There are also bowls which I mention separately, as I have already explained the confusion over these in another article in this issue. This pattern, original name ROSOR, was made in Sweden by the Eda Glasbruks. Eda is a small town in Värmlands which is the western province of

Sweden next to Norway. The Eda Glasbruks (Glassworks) opened in 1833 and closed in 1953. It produced mainly domestic pressed goods in the popular to medium price range. It was eventually part of the co-operative glass combine "De Svenska Kristallglasbruken Aktiebolaget" which simply means Swedish Crystal Glass Works Limited Company and which you will be very relieved to hear

is referred to simply as the SKG... It produced carnival "lustraglas" in the late 1920's. Much the same time as did Sowerby in England. Eda exported widely throughout Europe and advertised extensively, and did very well, in the Baltic States (Lithuania, Estonia, Latvia) that are now part of the USSR. The glass was shipped to, and wholesaled through Klaipeda. It was never exported, when made, to the USA although a lot was sent to Australia where it was very popular in the early 1930's. (Shipping timelag) Swedish carnival reached US collectors through the container boom of the late 1960's and 1970's. This is how Carnival of European origin got all muddled up before it reached the USA and there was understandable confusion which yours truly is doing his best to help to sort out. It became convenient to label Carnival of uncertain origin as "English". I started my research on this basis but soon became aware of Carnival of European rather than of English origin. This diversion into Sweden arose through museum contacts and the persuing of French and German glass trade magazines which are difficult to locate and agonising to read via Micro-film cassettes obtained from sources best not mentioned. I do not have the time to go further, at the moment, into the Eda Carnival production as I must finish off my Sowerby project which is far from finished. But, as you can gather, the production of both companies coincided with the confusion over FLORA/ROSE GARDEN. However other patterns made by Eda include CURVED STAR, HEADDRESS, SUNFLOWER & DIAMOND, LATTICE & LEAVES, TRIANDS and other patterns some of which are not listed in US sources. This of course, means getting the red pencil out again but it must be noted that the CURVED STAR pattern was not made by Imperial or by Sowerby. The vase known and shown as STAR & FAN is CURVED STAR. Items listed as CATHEDRAL are also CURVED STAR and the so called Cathedral Chalice is part of a table service in CURVED STAR. It is a celery vase. (At the risk of inducing palpitations in some readers I will also mention that the Eda and SKG catalogues, and advertising, shows items in COSMOS & CANE and FOUR FLOWER VARIENT patterns. Please be patient.)

The catalogues of several Russian glass museums show Carnival items of Scandinavian origin which they claim are of Soviet design and inspiration. This of course in the usual nonsensical Russian claim to have invented everything..

(Author's copyright 1983. Please write to me first if you wish to use any of my material. I can often help with additional information or specific queries. I am sorry to say much un-authorized use is being made of my research and I cannot accept responsibility for material used in this way.)

Carnival Cameos

BY DONALD MOORE

DECORATED BUREAU SETS.



C1141, Florentine Iridescent—Grape cluster and leaf embossed, dark metallic iridescent finish, rainbow hues, 3 3/4 in. bottles, 3 1/2 in. covered puff box, 7 1/2 in. bat pin holder, 11 in. comb and brush tray, 5 1/2 in. pin tray. 1 set corrugated case. Set, 75c

Toy soldier sold for \$468

LONDON (AP) — A world auction record price of \$468 was paid in London Wednesday for a toy soldier.

The three-inch lead figure of a British Camel Corps soldier was made in 1910 when it sold for two pennies.

It went to a private buyer at the Philips auction house.

Another auction record of \$2,520 was paid for a set of 12 mounted bandmen of the Lifeguards.

The toy soldiers were from the 17,000-piece collection of Len Richards, a London bank clerk who died last year at the age of 75.

GRAPE & CABLE DRESSER SET

We often refer to the astronomical prices Carnival now brings compared with the few pennies it sold for when it was being produced in the 1907-1925 period. The dresser set shown here in a 1913 Butler Bros. catalog sold for 75 cents and that was without the perfume. It appears the perfume was sold separately and perhaps even made by Dugan rather than Northwood. A complete set in marigold or purple will now sell in the \$1,200 to \$1,500 range.

The newspaper clipping above tends to put some of our Carnival prices into a better perspective. When a toy soldier that cost 2 cents in 1910 will now bring \$468, we may not be as crazy as it might appear. Based on the same appreciation in value, a dresser set would sell today for \$17,550 -- without the perfume of course.

MORNING GLORY WATERSET



In my humble opinion, the Morning Glory waterset is the most beautiful in all the carnival glass, and because of its rarity must be classified as one of the most desirable patterns from the Millersburg company.

Detailed mold drawings for both the pitcher and the tumbler from the Millersburg factory exist, so we can be confident of its origin, however with the beautiful radium finish, few could doubt it. The regal pitcher stands 14" tall, with an optic or panelled interior (as do the tumblers). The morning glory design meanders around the center of the pitcher and consists of three flowers, leaves and buds and a rather unusual drapery. The design is three mold. The matching tumbler is 3 3/4" tall and has rayed base.

The Morning Glory waterset is usually seen on amethyst base glass but both marigold and green do exist. However please remember ALL colors are very rare, and while the marigold is sometimes a bit weak, it is typical of the Millersburg process. The rich emerald green is a sight to behold and anyone who has had the privilege of seeing the beautiful color photo of Don Moore's three Morning Glory pitchers, one in each color, will testify to the impressiveness of this pattern. Just why John Fenton chose only the waterset to be designed is a mystery. Can you imagine what a beautiful punch set or table set this would have made? But we are thankful for what we have and every time I see this beautiful set I am amazed at the skills the glass-makers had. And maybe someday I will own a Morning Glory pitcher and my collection will be complete.

COMING ATTRACTIONS
CONVENTIONS

APRIL 21-22-23-24

HEART OF AMERICA CARNIVAL GLASS ASSOC. - Convention, Holiday Inn, Mission-Overland Park, Kansas.

JUNE 3-4-5

LINCOLN LAND CARNIVAL GLASS - Convention, Holiday Inn, I-90 & Rt. 53, Rolling Meadows, Ill 60008 PH 312-259-5000

JUNE 16-17-18

NORTHERN CALIFORNIA CARNIVAL GLASS CLUB. - Convention, Sierra Inn, Sacramento, California

JULY 7-8-9

AMERICAN CARNIVAL GLASS ASSOC. - Convention, Penn-Harris motel, Camp Hill, Pa

JULY 28-29-30

INTERNATIONAL CARNIVAL GLASS ASSOC., - Convention, St. Louis, Mo.

AUGUST 11-12-13

PACIFIC NORTHWEST CARNIVAL GLASS CLUB - Convention, Holiday Inn, Eugene, Or

OCTOBER 7-8

AIR CAPITAL CARNIVAL GLASS CLUB - "Mini Convention", Sheraton Airport Inn, I-235 & US 54 West, Wichita, Kansas 67209



SNEAK PREVIEW

On February 7 we heard Roland Kuhn of Haysville, Kansas was coming to Fenton's to get the H.O.A.C.G.A. souvenirs made on that Monday. He flew in to near by Parkersburg on Sunday-rented a car and drove over to visit with us which was so nice as we hadn't seen him since last April convention. We surely enjoyed having him spend the night and he was up early to go over to the factory-meeting Mr. Frank Fenton as scheduled.

On Tuesday we drove over to see the pretty Loving Cup souvenirs. Its always a thrill to see them coming through like a crowd of people on the slow moving conveyer called a Lehr. Just like people too-each one dressed a little differently in coloring. The inspectors were picking them up and carefully checking every little flaw-some went to the rejects tray and only the good ones will be allowed to end up at the convention to be selected personally by their new owners. Some will be mailed out to others who can not be there in person. Roland and Mr. Fenton also were giving individual attention to the souvenirs so surely everyone will be pleased.

The whimsies had been made on the day before and were locked up behind closed doors so no danger of an ever getting away to unauthorized hands. Mr. Fenton and Roland graciously asked if we wanted to see them which of course we did since we will not have another chance by us having to miss the convention this year. We did send in our reservation early Jan 20-soon as it came out in the January newsletter and to our dismay and disappointment the motel called to say they had a way of selection on rooms-beginning February 1-2-3- then back to Jan 31st-going backwards to ours. By the time ours came up we were to be put outside so we would not care for that and said so. We always like a display and do not care if the Judges would hunt it up (the judges are also a new ruling) we prefer to have members see it and to drive so far to be outside is out of the question. We could go without a display and we tried that once. We missed it so much we will never try that again. We will be sorry to miss a nice convention and its not easy to understand preference being given to so many others who were later. In this case the early birds were penalized as I guess we were not the only ones to find themselves pushed to the outside.

Back to the whimsies-they are truly masterpieces as always as to unusual shapes and coloring. Everyone should love them and hope they will sell for a tidy sum as their cost is more than people realize by the extra care and attention it takes on them. When one looks at so many souvenirs that eventually has to be destroyed because of a slight flaw-you almost wonder why they are not higher. It does seem safe to say the Fenton company can not be making a big profit by absorbing the wasted time and products. It is a very revealing experience to see the time and work that it takes to get the souvenirs

made. We feel it a privilege every time and the souvenirs seem to mean more to us when we have had a chance to see all the different steps it takes from beginning to the end - then they finally end up on our shelves as a treasured memento.

Grace & Byron Rinehart
Charleston, West Virginia

As a new member I was amazed at the big choice of glass for sale but rather sorry to say that much of what is advertised is in fact damaged and not mentioned and I firmly believe the only way to eliminate this dishonest practice is to reverse the rule. All pieces advertised should be considered Damaged unless noted "Mint". Otherwise the Bulletin is in fact catering to "Damaged glass entrepreneurs". For as we all know the demand for damaged glass is very small indeed, compared to the actual amount of this glass thats available.

Changing your rule would be a first step towards putting damaged glass where it belongs: in the curio cabinets of those who truly love the piece and at a price thats in line with the demand.

I think this is on many of the members minds and hope something is done about it.

All this said, I praise all the volunteer work you wonderful people do. Your bulletin is a jewel and I wish all my carnival addict friends the "Find" of their dreams.

Y Beaudry
Canada

WOODY AUCTION

March 19, 1983 Woody Auction Service will be holding an auction in the Midway Lodge, St. Louis, Mo. This auction will have some choice carnival glass to be sold. Marion Hill will be selling the majority of her carnival at this auction. Plan now to attend.

SECOND ANNUAL OLD CARNIVAL GLASS SHOW AND SALE

Lititz Recreation Center, Lititz, PA

March 19, 1983 9 A.M. - 6 P.M.

Admission \$2.00...\$1.50 each with this card

Sponsored by - The Keystone Carnival Glass Club

For More Information, Contact Elwood Funk
563 Hiview, Lititz, PA 17543 - Phone: (717) 665-2395

In regards to the views expressed in February bulletin. I would like to express mine also.

I do agree that the sellers benefit from the sale of their glass. But, I also believe the buyer benefits equally as much, as they get the opportunity to purchase the pattern, color, or shape of carnival they evidently cannot find locally.

Sometimes the benefits are not so great. I recently sent out a 7 pc water set only to have it returned with three chipped tumblers. The man has his refund, UPS does not believe the damage occured in shipping, and I now have a damaged set.

I am also a buyer, or at least I try to be. I have managed to be first, twice, out of 15 calls. So much for living in N. H. and being among the last to receive the bulletin. I will cheerfully keep on trying though, just might be lucky again.

Barbara Nelson
Laconia, N. H.

Thanks so much. Last months for sale list sold very well. I sure appreciate the service the club provides. You are doing a great job with the bulletin.

Burney Talley
New Mexico

I have always had good response and think you do a great service to all of us who use this bulletin for advertising our carnival.

Mrs. Clarence Osterbuhr
Kansas

Thanks for all you have done for our club. Its' appreciated.

Art Smith
Florida

I wanted to thank you for your courtesy shown in replying to my request for info about the various clubs. Received your bulletins and am still enjoying them, as well as other carnival collectors whom had never heard of your wonderful organization here in Yakima. I am sending Diana my membership fee and will be sending other names for members also. We out here, are so out of touch with carnival glass news that your info is like rain on a desert.

Again I say thanks, and if you ever vacation out here maybe I can have an opportunity to return your kindness.

Fred Van Hoose
Yakima, Wa

On holiday recently with my son and family in Jakarta Indonesia, we visited the home of an extremely wealthy Chinese collector of Chinese ceramics. My son has become very interested in old Chinese ceramics and Yang, as we will call him, has been a great tutor. Gavan and Yang make weekend trips to the Sunda Straits area to investigate old wrecks. They have collected some very valuable and old pieces and get a great deal of satisfaction in dating and

tracing its period of manufacture, sometimes hundreds of years. Between them they have boxes and boxes of shards (broken pieces) which are most interesting. The Chinese traded all over this area, and there are countless wrecks owing to sudden cyclones. After accepting Yang's invitation to view his collection, imagine my amazement to see amongst the priceless and exquisite blue Ming, old Celandon, old colonial Dutch lamps, carved rose wood furniture in the Chinese traditional style with brass fittings etc. two pieces of carnival glass.

On close inspection, I realised it to be a punch bowl and base marigold Whirling Stars. They were absolutely delighted when I put both pieces together, they had always thought it to be a vase and bowl. The lady of the house then produced the punch cups from a cupboard. I guess she thought hardly the right cups to serve Chinese tea in. Yang says he can remember it all his life, as it belonged to his grandmother, and always displayed as separate pieces. They always wondered about the cups. One wonders how on earth would carnival glass find its way into an old Chinese family fifty or sixty years ago in Jakarta Indonesia.

Blackburn
Australia

WELCOME NEW MEMBERS

M/M John Gordon, Osseo, Mich
M/M William Johnson, Centerville, Ia
M/M John O'Donell, Pitman, N J
Eileen Turner, St. Louis, Mo
Robert Richard, West Brookfield, Ma
M/M Alan Isreaelson, Auburn, Ma
Marion Hartman, St. Louis, Mo
M/M Fred Van Hoose, Yakima, Wa
M/M Geo. Dakonovich, Omaha, Ne
M/M Robert Schmidt, Seattle, Wa
Sonia Jean Harris, Fresno, Ca

ANOTHER AUCTION

Rocky Mountain Auction Co. will be selling the collection of Violet Ludeman. In this collection nearly 3,000 pieces, half new and half old. Detailed listing contact Rocky Mountain Auction Co., Box 571, Cascade, Colo 80809. Phone 303-684-2529. Date has been set for March 27, 1983.

Lakeland was the scene of Florida's largest carnival glass show as the Tampa Bay Carnival Glass Club presented it's second annual Lose Your Heart to Carnival Glass Jamboree. Carnival glass in all shapes, colors and patterns was displayed on twenty-four eight foot tables. There was no sign of a recession as glass was actively sold and traded. Among the hundreds of viewers no one caused as much excitement as Red Skelton. Skelton, a guest of the hotel because of a local concert appearance, made a tour of the exhibits. As flashbulbs were popping Red carried on a continuous comedy banter and was a great hit with the crowd. Tom Burns presented the guest with a windmill tumbler for which he received a personal autograph. Saturday evening a banquet was well attended. Robert Vining, the speaker of the evening, complimented the club on it's activity and offered a piece of carnival glass for a fund raising raffle. The jamboree concluded with an auction of local glass with Tom Burns volunteering as auctioneer.

A hospitality room was open Friday evening and Saturday. President Art Smith, at the banquet, praised the cooperation of committee members Florence and Phil Graham, Lily and Eddie Laman, Margaret and Glenn Austin, Florence and Bert Newman and Dorothy Smith. The Jamboree which ran February 11 and 12 had visitors from fifteen states and Canada.

Arthur I. Smith
President

The Air Capital Carnival Glass club met at the home of Winnie Brim for our February meeting and covered dish supper. We had a nice turn out for the meeting.

Donald Kime gave the program on vaseline based glass. With the use of the black light several pieces were shown and talked about. What a great difference it makes when you show it with a black light. A couple of pieces were discussed at length since it was felt many times we pass these pieces up while wandering thru Flea markets and shops along the carnival glass trail.

Our next meeting will be at the Francis Elders in Douglass, Kansas.

Frank Spangler
Secretary

The business meeting of the NCCC was held at the Concord Inn, January 16, 1983 in Concord, California.

The convention Date was changed from June 23, 24, & 25. to June 16, 17 & 18th. PLEASE TAKE NOTE OF THE CANGE OF THE CONVENTION DATE.

Dave Middleton gave a short talk on Carnival News and the finding of rare pieces.

Don Moore gave an interesting resume on the latest prices in the world of Carnival Glass. Carnival seems to be doing quite well at the present time.

Russell Umbraco gave a talk on Stretch Glass especially candlesticks. He showed many interesting pieces in various colors and from various makers. He also showed some rare pieces from his collection.

The Show and Tell portion of the program was quite interesting and there were seven participants from the membership.

The next meeting will be held April 17, 1983 at the Plaza Sierra Trail Lodge in Sacramento, California.

Thomas Darter, Secretary



FOR SALE

Darlene Yohe, Box 343, Stuttgart, Ark 72160 PH 501-673-3437

G EI	N G/C powder jar	95
P EI	N G/C powder jar tiny roughness inside rim	75
P EI	N bushel basket	70
M EI	Diving Dolphins bowl	130
P EI	N Peacock at Fountain pitcher 5 tumblers	500
G EI	Grape & Gothic Arches butter base, 2 sm flakes under base	20
G EI	N Flute butter lid	45
P EI	Acorn Burr sugar lid	35
PM EI	Peacock at Fountain tumblers 2 ea	30
P EI	Dahlia sugar base	65

Singleton Bailey, Box 95, Loris, S C 29569 PH 803-756-7495

P EI	Boutoniere compote	75
M EI	Inverted Feather compote	75
M EI	Daisy Cut bell	295
Dark EI	Peacock lamp base	350
Pearl EI	Grape & Gothic Arches tumblers w/gold 5 ea	75
Pearl EI	Grape & Gothic Arches tumblers no gold	65
B EI	Orange Tree creamer ftd	95
B EI	Orange Tree spooner ftd	95

Edward Henderson, 1111 N College, Stuttgart, Ark 72160 PH 501-673-8757

M EI	Windmill oval relish dish	40
M EI	Orange Tree pedestal sauce	15
PO EI	Cherry Spray sauce dish opalescent overlay	40
M EI	Holly Spray sherbert	15
M EI	Grape With Leaf minute chip 3 ea	10
S EI	Tulip vase 6 1/2	25
M EI	Swirl Rib vase 10"	35
M EI	Funeral vase 18"	50
M EI	Fenton Grape wine caraf no stopper	65
P EI	Fenton Grape wine caraf no stopper	80

A. Dickey, 144 Chandler St., Vacaville, Ca 95688 PH 707-448-9386

M	Imperial Grape 7 pc water set	160
LM	Heavy Iris water pitcher	200
M EI	Grape & Lattice 7 pc water set some tumblers Variet	280
P EI	G/C 7 pc water set (N)	375
M EI	Grape Arbor 7 pc water set	350
W EI	Dahlia water pitcher	700
M EI	Lattice & Daisy tumblers 6 ea	18
M EI	Water Lily & Cattail tumblers 6 ea	18
M EI	Stork & Rushes tumblers 6 ea	18
B EI	Stork & Rushes tumblers 6 ea	25

Barbara Nelson, RFD 4 Box 155, Laconia, N H 03246 PH 603-293-7246

P EI	Good Luck plate 9" N pie crust edge	235
W EI	Leaf Chain 9 1/4 flat plate gold irrid	125
W EI	Nippon bowl 8 1/2 frosty	125
G EI	Leaf Chain bowl 9"	45
P EI	Wishbone 3 ftd bowl 8" N	75
M EI	Acanthus bowl 8 X 3	45
W EI	G/C ice cream bowl 11"	250
P EI	Colonial Lady vase tiny spot excess glass on rib	200
M EI	Grape Arbor 4 ftd bowl orange bowl shape	100
M EI	Many Fruits punch bowl top	150

Al Sebaugh, 9116 Fort Donelson Dr, St. Louis, Mo 63123 PH 314-843-6122

G EI	Acorn Burr punch cups \$30 ea or 5 for	125
R EI	Vintage bowl 10"	1200
DM EI	Lattice & Grape tankard and 6 tumblers	200
DM EI	Fashion pitcher 1 tumbler	130
DM EI	Octagen pitcher & 1 tumbler	125
G EI	G/C 9" plate	125
P EI	G/C dresser tray	185
A EI	G/C sweetmeat	210
W EI	Orange Tree plate 9"	145
A EI	Three Fruit 9" plate	120

Dorothy Thomason, Rt 1 Box 51, Lipan, Tx 76462 PH 817-646-2449

P EI	Beaded Cable rose bowl	70
M EI	Lustre Rose berry bowl 9"	40
A EI	Coin Dot bowl	45
A EI	Thistle bowl	45
M EI	Peacock & Grape bowl	35
M EI	Vintage wine glass	15
P EI	G/C tumblers two ea	30
M EI	Imperial Grape decanter & stopper	65
P EI	Imperial Grape decater no stopper	40

Lydia Caudle, Rt 1 Box 87, State Rd, N C 28676 PH 919-874-2519

P EI	Wishbone tumbler	110
W EI	Grape Arbor tumbler	135
R EI	Holly hat shape	195
IG EI	Peacock ar Um ice cream bowl (N)	350
AO EI	Leaf & Beads rose bowl	225
W EI	Rose Show plate	275
IG EI	Hearts & Flowers compote	175
A EI	Peacock at Um Millersburg large bowl	195
A EI	Concord plate	475
AO EI	Beaded Cable rose bowl	210

Lee Bryant, RR 1, Decatur, Ind 46733 PH 219-639-3415

A EI	Petal & Fan Jewell heart ext 6" flat bowl	30
M EI	Long Thumbprint cream pitcher	20
M GI	Panther with Butterfly & Berry ext 5" ftd bowl	37.50
M EI	Beaded Shell spooner	50
B EI	Panther with Butterfly & Berry ext 5" ftd bowl round	75
LM	Little Flowers sm flat for sided bowl	20
M GI	Orange Tree creamer collar base shows wear	30
A EI	Two Flowers 5" ftd bowl folded sides	35
G GI	Diamonds Millersburg 2 tumblers 1 pin head one point both	72
G GI	Imperial Grape tumbler line scratch	25

Burney Talley, 1814 Slate N W, Albuquerque, N M 87104 PH 505-242-1261 eve

M EI	Nesting Swan bowl	235
DP	Victorian bowl very center design not irid	125
M EI	Little Flowers 5 3/4 sauce	35
G EI	Pansy 9" bowl	45
M EI	Shell & Sand 7 1/2 deep bowl	25
A EI	Whirling Leaves bowl	85
Pearl EI	Lacy Dewdrop compote no lid	85
P EI	Raspberry milk pitcher	165
A EI	Blackberry Wreath bowls 2 ea 40 both	75
P EI	Imperial Grape water carafe	125

Mary Kesterson, 3020 Mesa Rd, Willow Park, Tx 76086 PH 817-441-8410

CB EI	Beaded Cable rose bowl (N)	75
EB EI	Poinsettia & Lattice bowl ftd	175
A EI	Dragon & Lotus bowl	40
W EI	Daisy & Drape vase	145
M EI	Mikado compote large	135
W EI	Orange Tree plate 9"	140
P EI	Strawberry bowl 8 1/2	50
G EI	Wishbone bowl ftd 8"	70
R EI	Floral & Optic bowl ftd	150
B EI	Stag & Holly bowl ftd 11"	150

N. Campbell, Box 107, Ocate, N M 87734 PH 505-666-2237

AO EI	Scales 9" bowl	245
PO EI	Nautilus	260
OG EI	Singing Birds tumbler	32.50
LM EI	Grapevine Lattice tumbler	45
M EI	G/C med punch bowl & 8 cups	750
A EI	Butterfly & Tulip round bowl	750
R EI	Stippled Rays 6" bowl	200
G EI	Diamond Rib vase 10"	30
P EI	Raspberry water set 7 pc	550
Pink EI	Necklace 70" long 5 strands	200

Francis Gannon, 8743 Branton, Highland, Ind 46322 PH 219-923-8134

P EI	Imperial Grape carafe	170
P EI	G/C butter (N)	195
AO EI	Three Fruit bowl tiny chip	195
G EI	Millersburg 6" Blackberry Wreath ruffled bowl	40
M EI	Crabclaw 5 pc water set	250
B EI	Heart & Vine 9" bowl	55
M EI	Orange Tree mug	20
M EI	Golden Harvest stopper only	30
P EI	Singing Birds mug sl side roughness (N)	45
DM EI	Crabclaw tumbler	40

Patricia Craver, Box 8015, Allandale, Fl 32023 PH 904-788-5315

M EI	Vintage powder jar	40
W EI	Grape Delight rosebowl	85
M EI	Vintage wine 2 ea	20
M EI	Loganberry vase	125
M EI	Butterfly & Berry master berry	50
P EI	Windmill 4 1/2 round bowl	20
W EI	Bushel basket	110
W EI	Roseshow plate	260
W EI	Peacock at Fountain compote base ground down 1/2" crack in base	100
A EI	Butterfly & Berry nut bowl cracked in bottom broken bubble on one ft pictured in last months bulletin	100

Theresa Derr, 13 Haslach Ave, Trenton, N J 08629 PH 609-587-3752 aft 4

A EI	Diamond Lace water pitcher	225
M EI	Vinyard water pitcher	85
M EI	Hattie 9" bowl	30
M GI	Kittens spooner rough rim	50
M GI	Kittens spooner bruise on rim	50

J. Blackburn, 408 Military Dr., Coeur d' Alene, Idaho 83814 PH 208-667-2908

M EI	Persian Medallion 6" plate	30
M EI	Star Spray etched 9" plate	25
M EI	Lattice & Grape tumblers 2 ea	15
M EI	Car vase complete	30
M EI	Hattie bowl	25
M EI	Holly bowl	28
M EI	Vintage nut bowl ftd	25
M EI	Thistle bowl	28
M EI	Pineapple dome ftd bowl	25
S EI	Oval & Round sauce dish 4 ea	10

Mrs. Clarence Osterbuhr, 802 Hackberry, Garden City, Ks 67846 PH 316-275-5615

M EI	Octagon pitcher 8"	85
M EI	Lustre rose pitcher 6 tumblers base nicks on 2	125
M EI	Thistle & Thorne creamer	22
G EI	Shell & Jewel sugar with lid creamer no lid base nicks	35
G EI	G/C 7 pc berry set N	200
P EI	Flute berry bowl 4 sauces	100
S EI	Star Medallion milk pitcher	45
A EI	Pineapple creamer	40
C EI	Imperial Grape 7 pc berry set rainbow irid	75

Dick Wetherbee, 847 Stafford St, Rochdale, Ma 01542 Ph 617-892-4420 aft 6

IB EI	Swan salt novelty	27
P EI	(N) Three Fruits 8 1/2 low bowl stippled	45
G EI	Wreath of Roses 5" compote	42
AO EI	(N) Four Pillars 10 1/2 vase 2 ft chipped on base	48
P EI	Butterfly hat pin long copper pin	27
TB EI	Louisa 9" 3 ftd low bowl	35
W EI	Wreath Cherry sm oval berry bowl gold gilded	55
PO EI	Stippled Petals 9 X 6 bowl banana shape	65
B EI	Orange Tree 9" low bowl varient	65
G EI	G/C 8" 3 ftd bowl Fenton	35

Alex Knepper, 3427 Jackson, Sioux City, Ia 51104 PH 712-258-5671

G EI	Three Fruits plate 9"	75
M EI	Holly plate 9"	55
P EI	Fish plate 6"	25
M EI	Cherry Circle plate 6"	30
PO EI	Puzzle two handle candy dish chip under collar	25
P EI	G/C 7" plate hand grip chip under collar	30

Mary herren, 520 S Berry, Morganfield, Ky 42437 PH 502-389-3121 eve

A EI	Wreath of Roses rosebowl	55
G EI	Millersburg 8" Mayan bowl	57
M EI	Orange Tree stemmed ice cream	8
A EI	Millersburg 6" Blackberry dish radium	30
M EI	Checkers butter top	12
M EI	Checkers 6" bowl	5
M EI	Cane & Daisy cut vase Jenkins	90

Wesley Strain, 832 Carson Rd, Ferguson, Mo 63135 PH 314-524-5608

M EI	Greek Key bowl	100
A EI	Ten Mms bowl	110
W EI	Peacocks on Fence bowl	225

Frank Ronk, 5234 Outlook, Mission, Ks 66202 PH 913-432-8286

All H.O.A.C.G.A. souvenirs-make offer

Ernest Laningham, 3020 Country Sq Dr, #1218, Carrollton, Tx 75006 PH 214-245-1602

M EI	Two Flowers 9" ftd plate very rare	575
M EI	Goddess of Harvest bowl very rare	4200

36

Diane Fry, 5395 Middleton Rd, San Diego, Ca 92109 PH 619-272-1663

A EI	Butterfly & Berry spooner	90
B EI	Captive Rose 9" plate	130
B EI	Daisy & Plume N rose bowl 3 ftd	50
M EI	Fine Cut & Roses candy dish rough ft N	32
M GI	Beaded Shell berry dish	20
M EI	Waterlily flat dish 5 1/2	12
M EI	April Showers vase 11"	38
M GI	Tall hat 4"	18
M EI	Wide Panel vase 7 1/2	12
M EI	Acom dish fluted 7 1/2	28

William Light, 4217 E 52nd St, Maywood, Ca 90270 PH 213-581-7336 leave answer with phone service

PM EI	Orange Tree punch bowl & base	175
R EI	Blackberry Spray pulled up hat shape	240
W EI	Grape Delight nut bowl sm chip 1 ft	70
M EI	Grape Delight nut bowl	55
P EI	Grape Delight nut bowl	85
M EI	Good Luck bowl (N)	70
DP EI	Good Luck bowl (N)	110
AMB EI	Lustre Rose rose bowl or nut bowl	85
LM EI	Strawberry plate	75
LM EI	Horses Head medallion ftd rose bowl	90

Y Beaudry, 738 14th Ave, City Of Two Mountains, P. Q. Canada J7R 3W7

M EI	Robin mug	29
M GI	Octogon creamer	38
M EI	Octogon decanter with stopper	90
M LI	Octogon sugar no lid	35
M	Octogon wines ea	22
M EI	Three Fruits plate 9"	60
M EI	Cherry Circle butter top	40
M	Imperial Grape berry bowl	30
M	Imperial Grape sauce bowls have 6 ea	13
M EI	G/C sugar lid 3 7/8	20

37

Jos Mello, 535 Fish Rd, Tiverton, R I 02878 PH 401-624-2174

A EI	Singing Bird mugs 2 ea	75
M EI	Persian Medallion compote	40
B EI	Heart & Vine bowl 8 1/2	40
M EI	G/C hat pin holder	135
M EI	Peacock at Urn compote	35
A EI	G/C punch cups 4 ea (N)	22
A EI	G/C tumblers (N) 4 ea	25
A EI	G/C water pitcher sm flakes on 1 thumbprint good color	175

Valmer Cross Sr, Prattsville, N Y 12468 PH 607-588-6698

M EI	Brooklyn Bridge bowl	250
PO EI	Ski Star 10" bowl	75
P EI	Butterfly & Berry 7" vase	36.50
G EI	Blackberry Wreath 6" bowl tiny flake	23
M EI	Swirl 8" plate	25
M EI	Imperial Grape water bottle Edwards bkc of rarities P39	100
M EI	Peacock & Urn compote	50
M EI	Vintage Banded mug	40
DM EI	Fashion 7 pc water set	250
G EI	Persian Medallion 6 1/2 bowl	25

Edna Burns, 145 Union St, So. Weymouth, Ma 02190 PH 617-335-3178

M EI	Lattice & Grape 7 pc tankard water set	175
A EI	heron mug tiny no harm flake on underside	175
M EI	Horsehead bowl 6 1/2 round, collar base scarce shape	65
G EI	Daisy & Plume stemmed rosebowl (N)	48
A EI	Singing Birds mug (N)	65
G EI	Memphis punch bowl base (N) super color	50
A EI	Singing birds covered butter (N)	165
M EI	Vineyard water pitcher	75
PO EI	Six Petals 8 1/2 ruffled bowl	65
PO EI	Beaded Panels compote ruffled edge	55

Paul Jankauer, 5 Court of Overlook Bluff, Northbrook, IL 60062 PH 312-272-4440

DM EI	Brooklyn Bridge	215
AO EI	Three Fruits spatula ftd	295
P EI	Leaf & Beads rosebowl	79
G EI	Thistle bowl accordian edge	45
M EI	Two Flower 10" ftd bowl	65
PO EI	Ski Star bowl 10"	85
W EI	Grapevine & Lattice low bowl or plate 7"	45
M EI	Pond Lily handled bon bon	30
P EI	Bushel basket (N)	70
AQ EI	Little Beads miniature compote	45

Mrs. J. Vokral, 439 Grande Cote, St. Eustache, P. Q. J7F 1H9

IG EI	Northwood basket	US \$	160
M EI	Orange Tree punch cups 6 ea		16
M EI	Soda Gold candle stick		18
M EI	Two Fruits divided bowl		46
M EI	Orange Tree mug		24
M EI	Maple Leaf tumblers 4 ea		26
M EI	Six sided candle stick		98
M EI	Peacock at Fountain creamer		50
M EI	Lustre Rose water pitcher		65
M EI	Lustre Rose butter top		20

Charles Perry, 8641 Lakeshore Dr, Southhaven, Ms 38671 PH 601-342-1694

IB	Acorn 7 1/2 bowl marigold irid	48
G	Singing Birds mug	60
M	Hobstar & Feather punch cup	20
B	Fenton Holly sm compote	22

Harold Decker, RFD 1, Nineveh, N Y 13813 PH 607-639-2800

410 pieces carnival by piece or all

Ted Sheibley, 304A Hillcrest Dr, New Cumberland, Pa 17070 PH 717-938-6417

G EI	Acom Burrs 7 pc water set	850
A EI	Fluffy Peacock 7 pc water set	885
M GI	Ice cream stemmed small	10
P EI	Wreathed Cherry 10 1/2 oval bowl	80
B EI	Wreathed Cherry 5 3/4 oval bowls 3 all	75
P EI	Fishermans mug	65
P EI	Acom Burr table set	580
M EI	Beaded basket	15
P EI	Town Pump	525

George Bond, 1406 N Ferncreek Ave, Orlando, Fl 32803 PH 305-896-4764 aft 5 PM

IG EI	Hearts & Flowers plate 9"	250
A EI	Three Fruits plate 9"	70
M EI	Octagon tumbler Owens #126	20
M EI	Octagon goblet	25
M EI	Kitten cup	80
M EI	Good Luck bowl stippled tiny edge flake	45
DM EI	Wishbone ftd bowl	45

Sal Aartsma, Box 1132, Patterson, N J 07509 PH 201-278-3630 aft 5:30

B EI	Wreath of Roses punch bowl & base	265
IG EI	Peacocks on the fence bowl	110
R EI	Double Scroll candlesticks pr	130
R EI	Dome base Double Scroll bowl	120
B EI	B & B sauce bowl 5 1/4	30
P EI	Memphis punch bowl base N	40
G GI	Millersburg Nesting Swan roughness at edge	110
AO EI	Tree Trunk vase 10 1/2 N	48
DA EI	Peach & Pear oval bowl 12 X 10	80
DA EI	Kookabura bowl 9 1/2	85

40

WANTS

Singleton Bailey, Box 95, Loris, S C 29569 PH 803-756-7495

Any color Trout & Fly pieces
Any color Big Fish pieces
Any color Millersburg Peacocks pieces

Y. Beaudry, 438-14 Ave, Two Mountains P.Q. Canada J7R 3W7 PH 514-472-0830

P Fine Cut & ROses rose bowl with int pattern
B Fine Cut & Roses rose bowl
AO Fine Cut & ROses rose bowl
IG Fine Cut & ROses rose bowl
IB Fine Cut & ROses rose bowl
W Fine Cut & ROses rose bowl
M Maple Leaf butter
M Maple Leaf creamer
no chips please call collect

Barbara Nelson, RFD 4 Box 155, Laconia, N H 03246 PH 603-293-7246

IB Beaded Cable rose bowl
IG Beaded Cable rose bowl
W Beaded Cable rose bowl

Dorothy Thomason, Rt 1 Box 51, Lipan, Tx 76462 PH 817-646-2449

G G/C ruffled berry bowl
EB G/C ruffled berry dishes or any color
IB Open edge candy dish
IG Open edge candy dish
IB Bushel basket 2 handle
IG Bushel basket 2 handle
W Grape Delight nut bowl
IG Hearts & Flowers compote
IB Hearts & Flowers compote
R Holly compote

41

Lydia Caudle, Rt 1 Box 87, State Rd, N C 28676 PH 919-874-2519

P Greek Key tumbler
IB Oriental Poppy water set or part
M Fisherman mug
Kitten pieces
P G/C butterdish bottom

Lee Bryant, RR 1, Decatur, Ind 46733

M Lattice & Grape water pitcher
A G/C signed N powder jar lid 3 3/8
A G/C signed N 6" bowl flat, folded, scalloped with basketweave up to 3
M Field Flower pitcher and tumblers if available
Grape & Gothic Arches water set any color
Lattice & Daisy water set any color
G Singing Birds mug

Burney Talley, 1814 Slate N W, Albuquerque, N M 87104 PH 505-242-1261 eve

A Field Flower tumblers 5
G Fieldflower tumblers 3
P Octagon tumblers 4
M Heavy Iris tumblers 2 med color

Wesley Strain, 832 Carson Rd, Ferguson, Mo 63135 PH 314-524-5608

B Cherry Thumbprint & Cable butter bottom only
M Cherry Thumbprint & Cable butter bottom only
W G/C lid for cracker jar
A Golden Harvest stopper for decanter
IB Waffle Block base for punch bowl

Charles Perry, 8641 Lakeshore Dr, Southaven, Ms 38671 PH 601-342-1694

M Stork & Rushes butter base only
A Butterfly & Berry butter top only
A Maple Leaf butter top only

Ted Sheibley, 304A Hillcrest Dr, New Cumberland, Pa 17070 PH 717-938-6417

A Millersburg Cherry table set pieces
P Peacock at Fountain table set pieces
PO Wreathed Cherry 5 3/4 sm oval bowls



Diane Fry, 5395 Middleton Rd, San Diego, Ca PH 619-272-1663

- P Berry dish with impressed bottom
- A Berry dish with impressed bottom

Ernest Laningham, 3020 Country Sq Dr, #1218, Carrollton, Tx 75006 PH 214-245-1602

- Rose Presznicks carnival pattern books 1 thru 4
- IB N Basket
- G N basket

Jos Mello, 535 Fish Rd, Tiverton, R I 02878 PH 401-624-2174

- Any Horse Medallion plates
- Any (N) baskets
- G Butterfly & Fern tumblers need 2
- P Imperial Grape punch cups need 4
- M Acorn Burr tumblers need 5
- G Acorn Burr punch bowl top only
- M Acorn Burr punch bowl top only

Edna Burns, 145 Union St, So. Weymouth, Ma 02190 PH 617-335-3178

- G Grape & Gothic Arches creamer
- M Millersburg Cherry sugar bottom & creamer
- M Millersburg Flute punch cups
- P G/C sweetmeat
- A G/C sweetmeat
- M G/C stippled humidor lid
- Hearts & Flowers compotes any color except M,B,W,IB,AO
- M Palm Beach spooner, covered sugar or butter



PLEASE MAKE CHECKS PAYABLE TO H.O.A.C.G.A. AND SEND TO THE SECRETARY:

Diane Treff
13646 Leavenworth Rd.
Kansas City, Kansas 66109

WILL PICK UP:

1983 CUSTARD GLASS WITH MARIGOLD OVERLAY LOVING CUP(s) AT \$40.00 EACH.

PLEASE MAIL:

1983 CUSTARD GLASS WITH MARIGOLD OVERLAY LOVING CUP(s) AT \$40.00 EACH PLUS \$3.00 POSTAGE FOR EACH LOVING CUP

This is a beautiful piece of glass and truly looks like a trophy. This loving cup is in custard glass, with marigold overlay, and is beautifully iridised. This year a limited supply is being made so please order as soon as possible.

PLEASE PRINT NAME AND ADDRESS

