

H. O. A. C. G. A.  
DONALD E. KIME  
BULLETIN SECRETARY  
1202 W. 4th ST.  
HAYSVILLE, KANSAS 67060



LAST ISSUE TO BE EDITED BY  
DONALD E. KIME - ENDING 4  
YEARS AS BULLETIN SECRETARY  
FOR H. O. A. C. G. A.



FIRST CLASS

MAY 1983

S	M	T	W	T	F	S
1	2	3	4	5	6	7
8	9	10	11	12	13	14
15	16	17	18	19	20	21
22	23	24	25	26	27	28
29	30	31				



# Heart of America Carnival Glass Association, INC.

MEMBERSHIP JUNE TO JUNE  
\$10.00 PER COUPLE OR SINGLE

PUBLISHED 15th OF  
EACH MONTH

PRESIDENT: GEORGE O. MCGREW JR.  
6800 WOODWARD  
OVERLAND PARK, KANSAS 66204  
913-262-8822

VICE PRESIDENT: GEORGE BOLLES  
5204 CATALINA  
SHAWNEE MISSION, KANSAS 66205  
913-432-5438

TREASURER: ELIZABETH BOLLES  
5204 CATALINA  
SHAWNEE MISSION, KANSAS 66205  
913-432-5438

SECRETARY: DIANE TREFF  
13646 LEAVENWORTH ROAD  
KANSAS CITY, KANSAS 66109  
913-721-2917

BULLETIN SECRETARY: DONALD E. KIME  
1202 W 4th ST.  
HAYSVILLE, KANSAS 67060  
316-524-3123

## FROM THE PRESIDENT

Another convention has come and gone. I hope everyone enjoyed themselves and had a safe journey back home. I wish to convey my thanks and those from the Board of Directors for your support and confidence in the officers and for attending your convention.

I would like to offer my personal apologies for not being able to stop and visit longer with each of you, but uncontrollable personal situations prevented me from devoting the needed concentration that is required at a convention. So if it seemed to cut conversations short or avoid certain subjects it was not out of rudeness.

The convention committee did a tremendous job considering the circumstances surrounding the construction at the Holiday Inn. We can all be thankful for those members who devoted so much of their time to assist the Chairman.

For those of you who were not able to attend the banquet, you missed a real treat by not hearing our guest speaker, Mr. Ray Notley. His talk was very informative and we were quite surprised to find out where some carnival was made. For those of you who missed his talk, Mr. Notley will be publishing a new book on Carnival Glass in the near future and the information contained in his talk can be found in this publication.

Mr. Notley was quite surprised when Mr. Floyd Whitley purchased a souvenir whimsey and presented it to him in the Texas Carnival Glass Club's name.

Mr. Frank Fenton attended again this year and we wish to thank him for his enlightening presence. Mr. Fenton surprised all those attending the business meeting by bringing some experimental pieces of Carnival, some being one of a kind, and having them auctioned after the meeting. Our sincere and heartfelt thanks are extended to you Mr. Fenton from all of the members of H.O.A.C.G.A. for your support and interest.

The Board of Directors would also like to thank all those members who could not attend for your letters of support and votes of confidence. As I have said before this is your club and we will give full consideration to all comments and suggestions that we receive.

George O. McGrew Jr.  
President

## SOUVENIRS

Well the convention is over. What a fantastic time we all had. For the souvenirs everyone there thought they could not have been better. Quite a few that had gotten one decided after seeing them, that they would have to have a pair. But they did leave us with a few for those of you that have been a little slow in getting your orders in. (Also for me to have to pack up again and haul home). If you have not ordered one yet you still have a chance to get one. If you have already ordered one and would like one or several to match you still can there is no limit on the amount you can buy. Get behind your club and lets sell all of the souvenirs. We still have the 1981 candle lamps and some of the 1982 ice blue corn vases with gold gilding on them. Like we have said before, we hear lots of people say do not break any of those beautiful souvenirs. Well the only way we can do that is if you buy them so we do not have any of them left over. We can not keep holding these either because of the storage problem. Lets get these cleared up and solve alot of solutions. Put money in the club, no more souvenirs to store or break, and also the souvenirs that we have will go up in value because there will not be any more available.

Roland Kuhn  
Souvenir Chairman

\*\*\*\*\*

### 11TH H.O.A.C.G.A. CONVENTION NOW PAST HISTORY

Once again the Holiday Inn, Overland Park, Kansas, was the scene for the 11th annual HOACGA convention, April 21-22-23-24, 1983.

This year many arrived a day earlier than usual it seemed to me. Perhaps this was due to a number of things but whatever we were glad everyone came and certainly hope everyone enjoyed theirselves. I believe we had a few less attending this year but perhaps the economy had a great deal to do with it. As always all the world were represented. Lela Galvin and her husband from Tripoli and of course our Speaker, Mr. Ray Notley from London, England. The early arrival of many gave us a head start on seeing our old friends and making new ones. We had some attending for the first time and hope it will be a yearly thing for them.

Thursday begin with registering in the afternoon. In the evening a get acquainted session with the guest speaker and Mr. Fenton. Later in the evening several brought glass for a panel discussion which consisted of Ray Notley, Frank Fenton, John Britt and Tom Burns. Many very interesting pieces were brought and believe it or not one or two could not be identified. Everyone came out of the session learning new information about

Carnival Glass. Friday more resistration, a delightful program by John & Lucile Britt on wines, cordails and little pieces in that catagory and a session by Dorothy Taylor on old verses the new carnival. The business meeting on Friday afternoon was well attended. After the meeting several pieces of new carnival experimental pieces from the Fenton vaults were auctioned off. We would like to take this opportunity to thank Mr. Fenton for helping us to raise money for the club. It was most gracious of you Frank. Friday evening the banquet with a super speech by Ray Notley of London, England. He came forth with a great deal of knowledge which has resulted from his many years of research. He came forth with a great deal of material that was all new to us of carnival origin and names of glass companies.. Through his research with documentation to back his finds we learned some of the pieces we thought were made in USA are actually a product of a foreign company. Through his upcoming articles in the Fall we will be learning much more about his extensive research. The 27 whimseys were auctioned off after the banquet. This year there were outstanding whimseys. The Texas club purchased one of the beautiful whimseys and presented it to our wonderful speaker, Ray Notley. On Saturday a brief registration session and the Tom Burns auction beginning at 9:30AM. The collection was basically from the outstanding collection of Donald and Elsie Weiss of Mirnesota along with a few other consignment pieces. The color and quality was outstanding and the prices held up very well throughout the entire auction. After the auction a last minute tour through the rooms to capture those last minute bargians and another session of chit-chat with each other. Around 6PM several gathered for the Italian meal with dancing and entertainment. Sunday we gathered for our farweell breakfast and to wish each and every one a safe trip home and to say our good bys until next year.

At the business meeting a new slate of officers were elected. President-George McGrew Jr., Vice President-Michael Basey, Treasurer-Elizabeth Bolles, Secretary-Diane Treff and Bulletin Secretary Al Rettke. We wish all of you the bestand hope your leadership will bring us good tidings.

Donald E. Kime  
Editor

\*\*\*\*\*

### SOUVENIRS STILL AVAILABLE

The 1983 Custard Glass with marigold overlay Loving Cup is available. This is a super souvenir and should be a must for your collection. Price \$40 plus \$3 for shipping.

We have several of the small 1983 table favor mugs left. They are amber in color and make a wonderful addition to your collection. They are \$10 each plus \$2 shipping with no limit, first come first served.

We also have the Ice Blue gilded corn vases (1982) souvenir for \$45 each plus \$3 shipping. The red candle lamp 1981 souvenir for \$75 plus \$3 shipping.

Now is the time to order any or all of these souvenirs. Remember when they are gone at these prices you will have to pay much more if you want one. An auction somewhere will probably be the only place you would find one.

The complete notebook and fillers are also available. The complete notebook including the 1983 filler is priced at \$12.00 plus \$2.00 postage. The filler only is available at a cost of \$3.50 plus \$2.00 postage.

\*\*\*\*\*

#### NEW BULLETIN SECRETARY

Please be advised as of June 1, 1983 Mr. Al Rettke is your new Bulletin Secretary. Please send all of your material to him directly. Sending it to the old bulletin secretary will only delay it getting into the bulletin when you desire it. Visiting with Al and his wife Wendy briefly at the convention makes me feel the bulletin is in good hands and I ask you to help him in any way you can to get him off to a fine start by sending in your articles and any newsworthy material as soon as possible.

Editor

\*\*\*\*\*

I am going to miss greatly hearing from all of you each month. I am pleased that so many of you at the annual meeting stood up and let it be known how important the bulletin is to this club. It seems those who scream the loudest are the ones who have hankering to make changes without doing any of the work involved. Its been fun the past years to bring to you the knowledge of our writers who were willing to share thier finds, research and information about our great hobby. Remember they do not have to do this service for us. Treat them with respect for what they do as it is a great service to our club, the hobby itself and above all it makes our bulletin top notch reading material.

Donald E. Kime  
Editor

We have word on Bill Carroll being in the hospital and all of us wish him a speedy recovery. A card or note from friends would be great.

His address:

C. B. Carroll, 3918 Revere Ave, Los Angeles, Ca 90039

\*\*\*\*\*

#### NEW MEMBERS

Bill Richards, Poland, Ohio  
M/M Fred Garcia, Spanaway, Wash

\*\*\*\*\*

#### DUES

The question of raising the dues came up at the regular annual meeting. after much discussion the vote was taken and the dues are now \$20.00 per year effective June 1, 1983. This is also a reminder that your dues are now due as of June 1, and should be sent to the Secretary Diane Treff. Her address is in the front page of your bulletin.

\*\*\*\*\*

By the time you receive this bulletin everyone who ordered a 1983 souvenir should have received your Loving Cup. The majority of these loving cups were sent out the week of convention. Of course we have received orders at convention and some later and those will be sent out just as soon as we receive your orders. The second batch were sent out the week of May 2. If you receive any damaged please remember that you must make the claim for damage when you receive it and then let us know and we will send another one to you just as soon as possible.

Roland Kuhn  
Souvenir Chairman

\*\*\*\*\*



INVERTED FEATHER - A CAMBRIDGE SUPER STAR

This fantastic tumbler would rank in the top ten in most everybody's carnival glass tumbler list. It is rare, beautiful, very desirable and highly sought after. I know of only six of these tumblers in marigold and only a few more than that in green. No purple tumblers have ever been reported in this pattern. Other Cambridge tumblers that are known to exist in carnival glass are Inverted Strawberry, Inverted Thistle, Double Star, Near Cut Souvenir and more recently six marigold tumblers were found in the "Sweetheart" pattern. Carnival Glass tumblers in the "Inverted Feather" pattern are not signed. The tall tankard type water pitcher that goes with the Cambridge "Near Cut" trademark and is located on the handle. We are including a photostatic copy of this pitcher, which will illustrate the shape of this very rare piece. Cambridge produced a good many crystal pieces in this pattern, but to find any piece in carnival glass is rather unusual. The two most commonly found "Inverted Feather" examples with iridescence are the marigold parfait or small compote and the green cracker jar. A cracker jar in amethyst or marigold however, would be extremely rare. Due to the fact we collect wines, goblets and cordials, one of our favorite pieces in this pattern is a tiny marigold wine. It is in deep rich marigold and is much smaller than the parfait piece that we mentioned earlier.

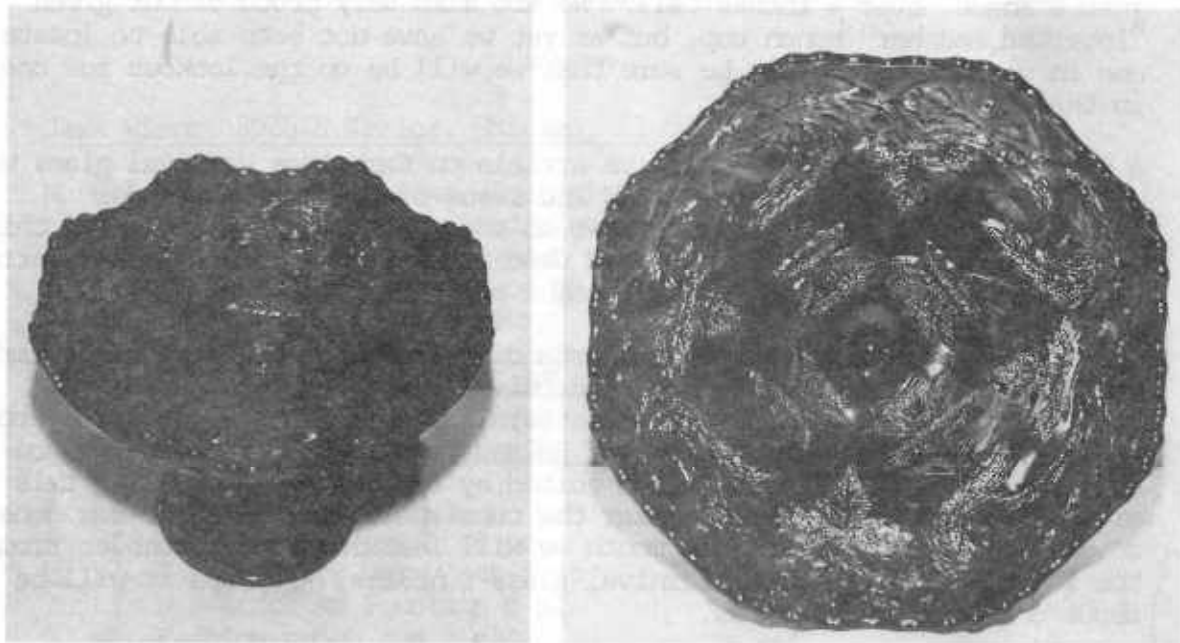
It is only 1 3/4 inches wide at the top, has a six sided base and stands just a shade over 4 inches tall. We are also very proud of our green "Inverted Feather" punch cup, but as yet we have not been able to locate one in marigold. You can be sure that we will be on the lookout for one in that color.

A very interesting and informative article on Cambridge carnival glass was written by Don Moore for the March 2nd issue of the Antique Trader Weekly. If you are not a subscriber to the trader and have not read this article, perhaps you could purchase that issue from a book store or borrow a copy from a friend, so that you might read that fine article.

This tumbler issue, featuring an outstanding Cambridge glass pattern, marks our 64th edition in this series on carnival glass tumblers. We have especially chosen this particular pattern for this issue because "Inverted Feather" is the favorite tumbler of Roland Kuhn and Donald Kime. Since this will be the last issue to be edited by Don, we are dedicating this article to him in appreciation for the outstanding work that he has done as our bulletin editor. Next month we will feature another tumbler from the long list of beautiful carnival glass tumblers. Perhaps it will be about one of your favorites.



THE INVERTED FEATHER WATER PITCHER



THE BEAUTIFUL MILLERSBURG POPPY COMPOTE

On a recent trip back East, between the two St. Louis auctions, we were able to photograph this beautiful Poppy compote. In both color and iridescence it is one of the most beautiful pieces of carnival glass that we have ever seen. The color is amethyst with brilliant radium iridescence. Not a single blow spot can be found on it anywhere. The lucky buyer reports it was very dirty when found and wasn't quite as beautiful until it was washed. This compote is of the rare flattened out shape. The "Potpurri" pattern is on the reverse side. The compote is 8 1/4 inches wide at the top, stands 5 5/8 inches high with a base diameter of 3 7/8 inches. This unusual piece was found by Emma Tilton of Gnadenhutten, Ohio. Carnival glass was advertised in a small "for sale" ad in their local paper. It was a house tag sale where everything was priced. The small town is located just a few miles away from Gnadenhutten. Emma could not make it to the sale on the first day so went on the following day. Just inside the door on a table, set this pretty piece among many other pieces of carnival glass. The unusual part of it was that it was priced no more than an amethyst Coin Dot rose bowl. It is now the property of Jack & Liz Wilson. This will make a great start on another super "Millersburg" collection.

Last summer we were shown what we thought an unusual piece of Carnival. A big heavy vase or Giant Tose Bowl maybe. It was not what we call a pretty color but the shape of it was so impressive we had to buy it. It was perfect, no damages or flaws but a very light marigold color. Maybe one could say a pastel shade as that sounds better. Anyway it looked prettier all the time as we compared it to the Giant Rose Bowl we have by Millersburg. Its so similar-they look like relatives at least, so keep each other company on our shelf just like they belong together.



We did take it to the Elkhart, Ind. for evaluation-Bill Heacock, John Britt, Jack Adams, Tom Burns and some others expressed opinions it probably was a Cambridge item-then John Britts article in HOACGA February newsletter gave some more information on a Cambridge pattern called "Stars and Bars". We checked it carefully and found a similar resemblance on parts of the pattern-enough to help us feel it likely was made by Cambridge. To our surprise in the March 2nd 1983 Antique

Trader there were several pages of Cambridge items shown and a wonderful informative article by Don Moore. One of the pictures showed a big vase that appears to be almost exactly if not entirely like our "unknown" to us pattern-he said the one shown was called Venetian and sometimes known as a Giant Rosebowl-also used to be thought of maybe Millersburg. Ours seems different at the top is the only change we noticed. Ours is a little scalloped with a saw tooth like trim. Also a bit cupped in so measures only 8 3/4 inches tall whereas his is given at 9 inches because the top seems to be up straight and a plain flat top edge. Everything else does seem similar so we were happy to have that information. All these educational articles by Don and all the others certainly are worth a lot of persons like

we are and do not do extensive research like they do. Our thanks to each one for doing this-just wonderful they share such knowledge.

We like to think our "orphan" may belong to a nice family after all by its resemblance to the Cambridge group. Whether it does or not-we shall love it just the same and be glad we were lucky enough to find it.

Grace & Byron Rinehart  
Charleston, West Virginia

\*\*\*\*\*

Dear owner:

Thanks for the slide, The compote is just super.. I hope you do not mind but I just finished a new price guide and I listed it in the introduction as the find of early 1983.

It was hard to put a value but I listed it at \$7000. We can always adjust this when we find out what it will bring.

Another collector also came up with a real find--A marigold Detroit Elks bowl.

Everyone who has had a chance to see the Dolphins compote raves about it so it must be nice..I should have such luck. Sure wish I was rich enough to own it. There just has to be a marigold out there somewhere.

Did you ever hear why several Millersburg items have only one or two examples in each color? It seems Mr. Fenton could not tell what he wanted unless he saw actual examples in each color, so his workers made sample of each item they were working on in any colors being considered for production so he could decide what he wanted. This was extremely costly as batches of glass had to be ready to pour small runs (one reason he went broke. I think this tells a lot about the man and why we have the rarities we do; so there has to be a marigold one as well as a marigold Hobstar and Feather rosebowl.

Keep in touch and keep finding it.. I love to report such important discoveries.

I am well into a novel about the glass business in 1800's. Hope to have it done in 18-20 months.

Bill Edwards

Just a reminder

The New England Carnival Glass Club is holding their first mini-show and sale on May 21st at the American Motor Lodge in Sturbridge, Ma from 10:00 AM to 4 PM with free admission to the public.

The following day will be an all Carnival Glass Auction of over 300 pieces in Spencer, Ma., 9 miles from Sturbridge. Please refer to last months Bulletin regarding its contents or call the auctioneer, Jim Zelina at 617-867-2486.

We would really enjoy having as many HOACGA members as possible come and help make our first endeavor a huge success. To answer questions or help with motel reservations, please call us at 617-892-4420.

Dick & Diane Wetherbee  
Rochdale, Ma

\*\*\*\*\*

The business meeting of the NCCA was held at the Sierra Travel Lodge, Sacramento, Ca April 17, 1983.

There were 42 present including 2 new members and 3 visitors.

Nominations forma were passed to the members for the propose of nominating officers for the coming year. The election will be held at the convention.

Reservations for the convention must be in by June 1, 1983.

Charlotte Williams gave an interesting up date on the value of Carnival glass. She also showed three sets of slides on Carnival Glass.

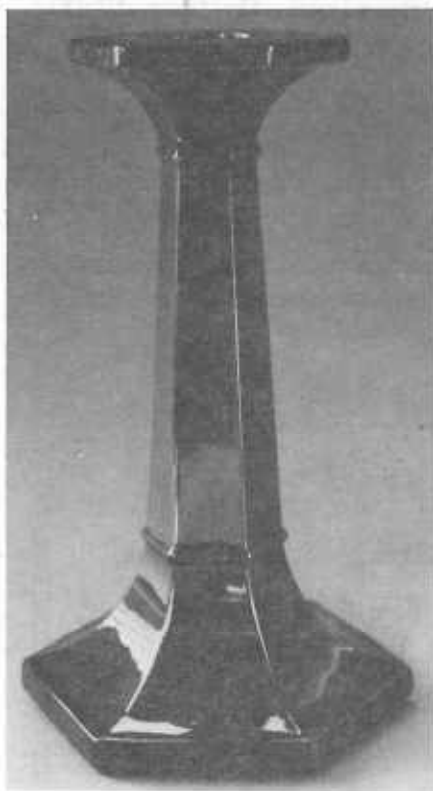
The Show and Tell portion of the program was also quite interesting and many nice pieces were shown by their owners.

All members and visitors were urged to wear a hat decorated with various carnival glass patterns to the convention.

Remember the convention will be held at the Sierra Travel Lodge in Sacramento, Calif June 16-17-18. The business meeting and election of officers will be at noon friday June 17th. The banquet and the auction will be held Saturday evening June 18.

Thomas Darter

by Ray Notley

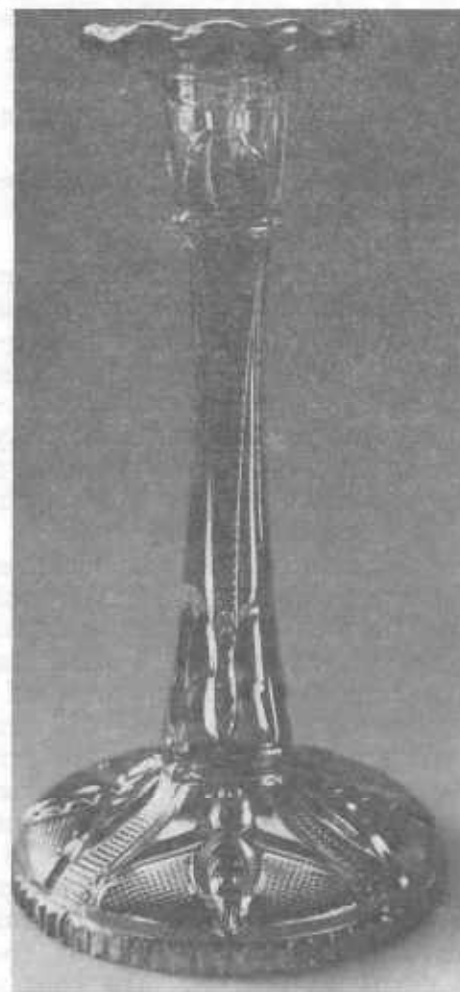


Decorative candlesticks were a great feature of all the European gressed glass factories from their inception. Those shown in this article are making their first appearance in print as far as I know. They come from three different countries and show three completely different approaches to colour, shape and finish. First we have the GATESHEAD candlestick by Sowerby. It is their pattern number 2445. There are two extraordinary things about this item. One is the richness of the "rainbow lustre" with its intense purples and blues and the other is the fact that the base glass is black. This jet glass had been used by Sowerby in the late Victorian period and they revived it in the 1920's to make the jet plinths that were then all the rage for displaying bowls on. How a batch of this dense glass (which contains iron filings) was used to make some carnival items is a mystery. However here it is. The base and top are ground and polished and are not iridised. This is an elegant, unusual and rather beautiful piece of glass.

GATESHEAD SOWERBY

glass-works, Karjalalittala. This latter was the 1917 amalgamation of two factories the former being Iittala from 1881 and Karhula from 1888. Iittala was founded by P.M. Abrahamsson from Sweden and the close links between families and the two adjacent countries was never lost. These are late items from RLO and lack the richness of the marigold iridescence found on earlier items such as the DRAPERY VARIENT, WESTERN THISILE, and WIDE PANEL THISILE tumblers and pitchers which were also made at this works. Their advertisements of this carnival period seem to be confined to the German and French trade papers of the late 1920's and through the 1930's. Although they did

have both American and British agents the tariffs were then protectionist and not much penetration of these markets was made. There is a great deal of it behind the Iron Curtain however especially in the Baltic area. The previously independent States of Latvia, Lithuania and Estonia, parts of what is now Poland and East Germany are all featured and listed with a network of wholesalers and retailers dealing with both the Finnish and Swedish glass factories. These countries were of course, "liberated" by Stalin in 1945.

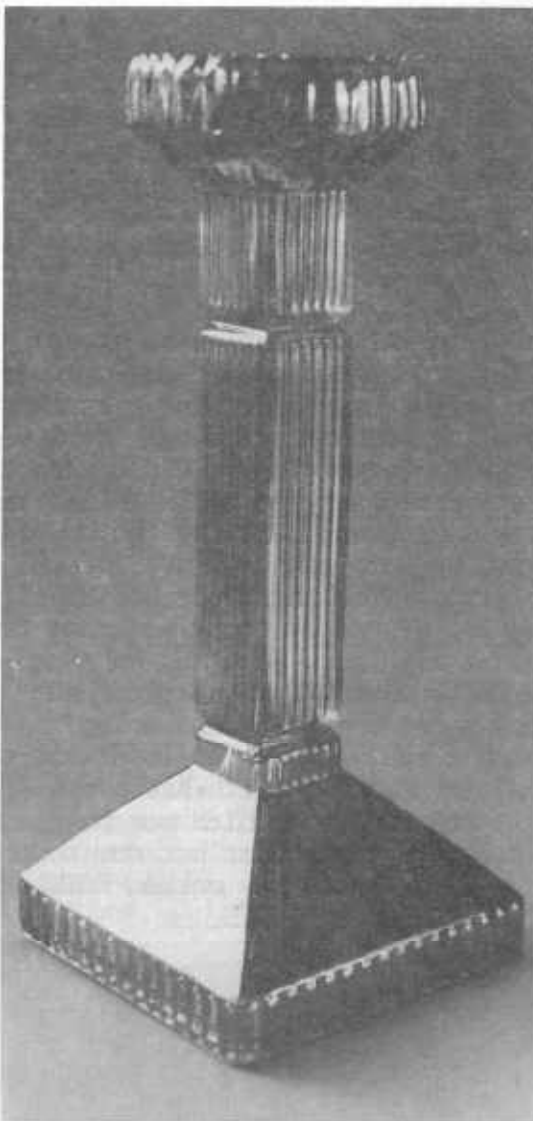


FIREFLY RLO

Scandinavian carnival production is a very confusing field to wander in and one can easily get lost in the undergrowth of hilarious and often amusing misunderstandings and mis-translations which occur in correspondence. This applies particularly to technical matters and there are many traps here for the unwary who could jump to some rather hasty and exciting conclusions from this Tower of Babel. I have had a lot of contradictory material from Scandinavia. I also show here, as an example of the problem, a vase (Finnish) that Paul Miller showed me at the AOGA convention in 1981 and which I realised was an important clue and I took a picture of it with his permission I told him it was Finnish, which was no great act of clairvoyancy on my part but due to the fact that the vase is clearly marked KAUKLAHTI







I had with me a list I had drawn up in 1978 of all European glass factories with their tradenames and marks. This I am still working my way through despite many interruptions. However I did find this vase in a Finnish catalogue but it was not that as indicated by the mark on the glass.

KAUHLAHTI is in fact the R.L.O. as cross referenced on my list.. This is a good example of the extreme caution and patience needed in the interpretation of catalogue material from any country. Moulds whizzed around Scandinavian glass factories like the puck in an ice-hockey match. Very difficult to keep track of.. North European glass factory catalogues show copies of Sowerby patterns (ones not used for Carnival thank goodness), copies of Imperial and Dugan/Diamond items, and copies of copies.. A Danish factory copied a pattern of the English Davidson factory which was then copied in Czechoslovakia and subsequently in Sweden. Sowerby in England, as you have read in my articles in the Bulletin copied patterns by Imperial, notably Scroll Embossed. You do not need me to tell you of the outrageous stealing and copying of designs that went on between rival American carnival makers. As was the case in many instances in the USA, actual moulds moved from one factory to another and this was the case in Scandinavia on a much larger scale. (The biggest ever movement of actual moulds was as I discovered the transfer of all the Chippendale iron ware from Jefferson USA to England and the Jacobean line from Czechoslovakia, also to England). (see the Britts excellent recent article on the Jacobean tumblers). At this stage, one can only attribute patterns to certain

KULLERVO R.L.O.

Scandinavian factories if one knows for certain that the moulds were at the time that factory was making that pattern with carnival finish. The best way of dating carnival production at a certain factory is from dated advertisements or similar material which pictures or mentions the pattern in question as being available at that date in iridised form. There is no guarantee that

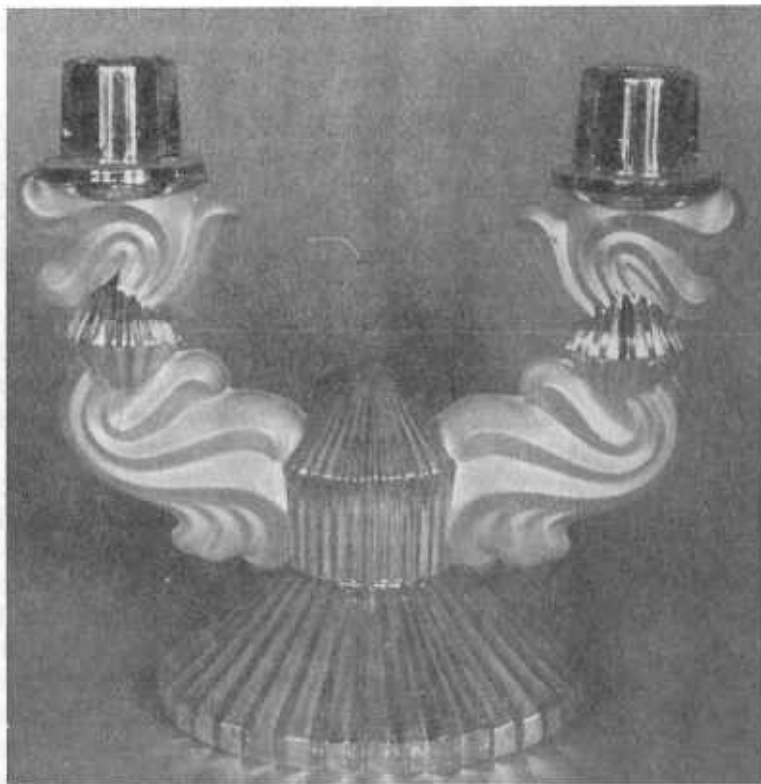


THEBES R.L.O.

example of the peak of iridescent technology reached in Czechoslovakia. This Art Deco styled example is a wonderfully pressed piece of ice glass with acid obscured sections. The remarkably controlled film of iridescence changes from blue to gold and the colours really do dance before the eyes.

the patterns shown in any North European factory catalogue were actually made in iridescent carnival form at that factory. There are also good reasons to suppose that the same patterns could have been made in carnival at several factories in Scandinavia, on separate occasions, using the same moulds. Many factories were linked by family ties or Cooperative liaisons and the interchange of moulds was easier than it would have been feuding rivals. As you have probably gathered, the more material that one accumulates on Scandinavian pressed glass, the worse the confusion. However glass historians are at work in Scandinavia itself and they are doing their best to make some kind of logical history but progress is slow and is still in its infancy. (American pattern glass is extremely well documented but even now, after many many years, work and revisions are still in progress).

To be honest, so few Carnival items are involved in this jungle of Scandinavian research that the intense effort needed is really out of all proportion to the final result. The attributions I have made so far are based on dated material. Even the original factory pattern names vary a great deal. The lovely CURVED STAR from Eda of Sweden was originally called LASSE which is the diminutive form of the name LARS (Lawrence in English). This is LAURIE to all intents and purposes. However in adverts of the Hanseatisches Glashandlung, CURVED STAR/LASSE/LAURIE turns up under the much more glamorous and exciting name of "AURORA BOREALIS" or Northern Lights.. The Eda names are rather dull. A very pretty vintage pattern, that we have in crystal, was called MAUD for reasons unknown.... Oh well, back to the drawing board, or should I say, "Come into the ROSE GARDEN, Maud?"



CZECHOSLOVAKIAN CANDLESTICK

Not a cheap technique and I do not think there are many examples. It is marked with the name of the factory in Czechoslovakia. It is worth mentioning here that all Carnival hat-pins buttons and jewelry were made in the Gablonz area of this country and other items of Czech origin as well as Classic Arts, include the Jacobean tumblers etc, PEBBLE & FAN, INCA AND SEAGULS vases etc. There is much else of what one must consider borderline Carnival as well as some of the worst and nastiest cheap carnival ever made. (There are items such as the FLEUR-DE-LYS vase shown in English wholesalers lists as well as endless small creamers, sugars and butter dishes. Where will it all end?)

(Copyright 1983 by Ray Notley)

THE "HORSE CHESTNUT" PATTERN

BY DON MOORE

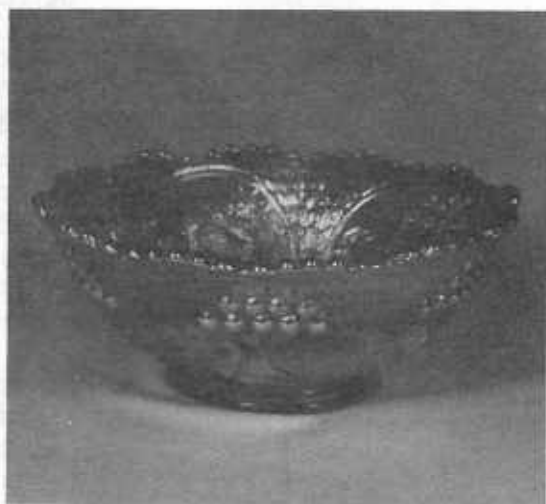
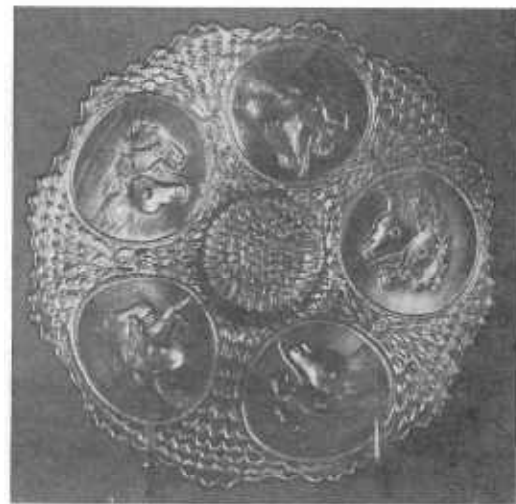


Most of you will recognize this Fenton pattern which was used extensively but only as an exterior pattern. If you are like me, however, you have a heck of a time remembering "Berry & Leaf Circle" as it is often called. That is why I have always called it "Horse Chestnut". I do not know just where I picked up this name but suspect it was from Sherman Hand. The buckeye is the seed of the horse chestnut so this name tag should have the full support of you Ohio collectors, particularly if you are a football fan. O.K. so it does not look like a horse chestnut. Picky, picky. Since when does the pattern name have to look like the real thing?

I can not find that Mrs. Hartung ever named this pattern. She does state in her book 1 that the small fruit looked like cherries. Bill Edwards in his books refers to it as "Berry & Leaf Circle" and also as "Panelled Berry". Wily Addis also called it "Berry & Leaf Circle" in his study of reverse patterns. Mrs. Presznick makes no reference to it that I can find. You may call it what you wish--and I am sure it comes up regularly in your daily conversations--but Horse Chestnut is an easier tag for me.

You may be surprised to learn how extensively Fenton used this pattern. Molds are expensive. By using the bottom part of the mold and changing only the interior portion of the mold, the company was able to produce a wider range of patterns at half the cost. This practice was also followed by Northwood with their Basketweave, Millersburg with their Wide Panel and of course Fenton used the Bearded Berry almost as often as they did this Horse Chestnut.

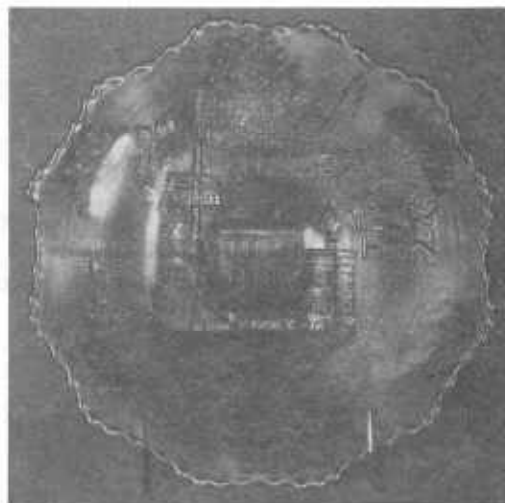
Lets take a look now at the specific patterns where this Horse Chestnut was used as an exterior pattern. They are, of course, all the same size. All are on a collar base and may be either a bowl or a plate. When flattened into a plate, they will run about 7 1/2 depending on the depth and the type of ruffle used.



#### HORSES' HEADS

This may be the most plentiful and best known of the pieces using this exterior pattern. The bowl is found in green, blue, amethyst, marigold, aqua, vaseline and red. It is reported in white but I have not seen it. The plate is much harder to find and is known only in blue and marigold. The blue plate shown above on the left is very rare and will command some \$350 to \$400. The marigold bowl on the right is quite common and will sell in the \$50-\$60 range. It would not surprise me if plates were made in other colors, particularly green, but if so they have not come to my attention.

Now it should be pointed out that this pattern was also made in a footed bowl, however, does not carry the Horse Chestnut. A new mold was required for the feet and exterior portion of this piece and they elected to leave it unpatterned. This footed bowl was also shaped into a jack-in-the-pulpit shape and a rose bowl. I have never seen a Horses' Heads rose bowl on a collar base.



#### ILLINOIS SOLDIERS AND SAILORS

It must be mentioned that there are two extremely rare versions of this same pattern that also carry the Horse Chestnut as a reverse pattern. One of these is the Indianapolis Monument. Only one blue plate and one blue bowl are known. The second version is the Indiana Statehouse. Only three pieces are known and all are plates-one blue and two marigold.

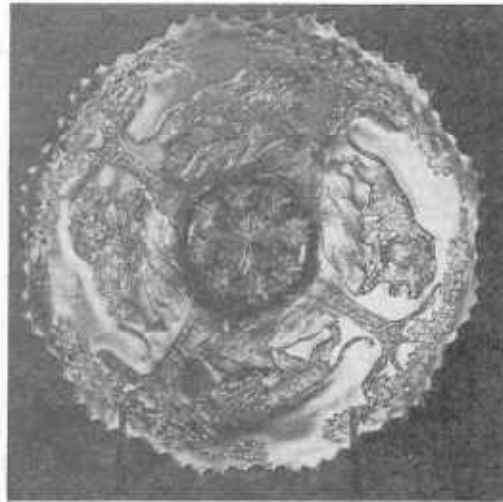


#### MIRRORED LOTUS

At the 1982 American Carnival Convention in Dayton, Smokey Cloud of Pontiac, Michigan found an ice blue Mirrored Lotus plate. This is not only the first plate to be found in this pattern but finding it in ice blue is a double bonanza. My friend Smokey has not touched ground since coming up with this super rarity.

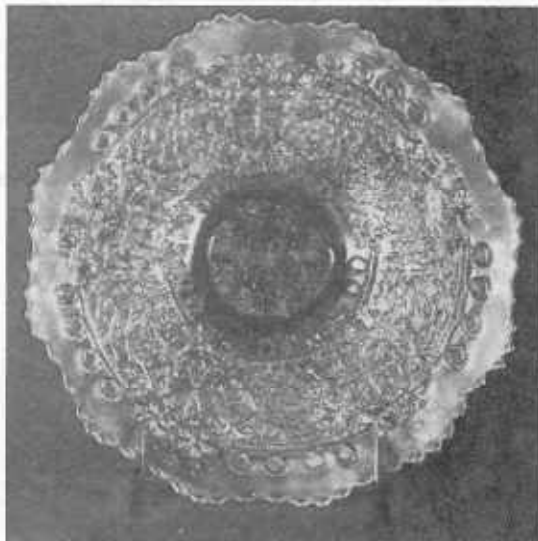
It is interesting that this pattern was made only in a plate. At least no bowls have turned up to my knowledge. This is unusual as it is generally the bowl and not the plate that was produced. The Imperial Nu-Art plates, both Homestead and Chrysanthemum, are the only other patterns I can think of where this is true. A Nu-Art bowl would be a real oddity.

The Soldiers and Sailors plate, as shown here, is found only in blue and marigold. A blue one brought \$725 at the November 1982 Burn's auction in New Philadelphia, Ohio. I feel the marigold is more rare but it will sell in much the same price range.



LION

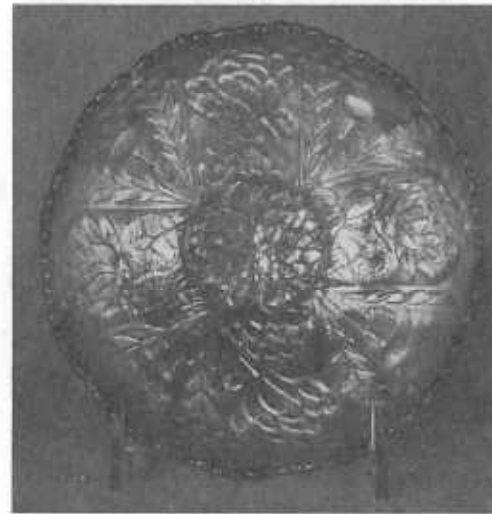
Here is still another well known Fenton pattern that came from the same mold where the bottom portion used this Horse Chestnut pattern. It is found in blue and marigold bowls and marigold plates like the one shown here. These plates are rare and will sell in the \$300 range. No blue plates have been reported to my knowledge and even the bowls in blue are rare.



LEAF CHAIN

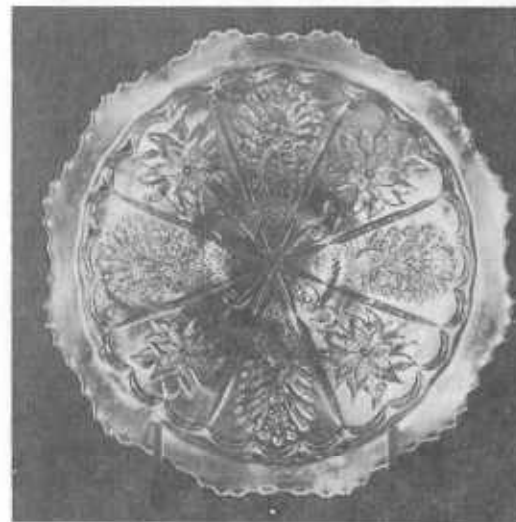
This well known pattern comes in bowls and plates of two different sizes. The size we are concerned with here, of course, is the smaller one which came from the same mold as the other pieces in this study and carries the Horse Chestnut as a reverse pattern. The plate in this 7 1/2 size is shown in marigold. The larger, 8 1/2-9" bowls and plates are from an entirely different mold and they all carry the Bearded Berry as an exterior pattern. Fenton used this pattern in the same way as the Horse Chestnut and it can be found on the reverse of bowls and plates in patterns such as Peacock and Urn, Orange Tree, Peacock & Grape, and Peter Rabbit--but that is another study and will have to deal with it later.

The Leaf Chain 7 1/2" plate is not rare. It will sell for around \$45 in marigold and perhaps \$65 in blue. I do not recall seeing it any other colors but the bowl in this size comes in green, amethyst, marigold, blue, ice green, red, aqua, vaseline and perhaps white. A bon-bon is also reported in this pattern but if I have seen one, my memory--which admittedly leaves something to be desired--has failed me again.



THISTLE AND LOTUS

This seldom seen pattern is yet another piece that used this same Horse Chestnut on the exterior. I have seen it only in a 6" marigold bowl as shown here. It may be ruffled or in the ice cream bowl shape as this one happens to be. A plate in this pattern would be a rarity. O.K. Smokey lets' get going on an ice blue one.



PEACOCK AND DAHLIA

This is the last pattern in this study. Like all the other patterns, the 7 1/2" plate shown here, carries the Horse Chestnut as an exterior pattern. This is another of those Fenton patterns, that while not rare, are seldom seen. I expect the plate should even be called rare. I have seen it only in marigold but there is no reason why it should not turn up in other colors as the bowl can be found in blue, amethyst, marigold, vaseline and aqua. I am not sure about green or white but bowls in these colors would be no great surprise.

Well that is about it. I hope I have covered all the patterns in this category. In any event its late and time to O.D. on cookies and milk and turn in.



### THE PEOPLE'S VASE

When one thinks of the single most important pattern from the Millersburg company (perhaps in all of carnival glass also), the Peoples Vase has to top everyone's list. Not only is it rare, with only five examples confirmed and one other reported, but for beauty, showyness and historical importance, nothing can match it.

Weighing a hefty 5 pounds, the straight topped examples measure 11 1/2" tall and the ruffled top ones are about 1/2" shorter. Each had a base diameter of 5 1/2" and the bottom is plain. The example shown, giving both side views is the amethyst example of which two are known. The design is basically a simple one; four adults and two children dancing in a circle with their hands joined while an elderly bearded man, a cane over his arm, looks on. The dancers are three male and three female. All are costumed in native dress; the ladies in long skirts and bonnets and the men in full-sleeved shirts and caps. The pavement beneath their feet is cobbled.

I said earlier five examples are known in four colors and perhaps it would be interesting to give some background of each known example:

One marigold is known. It sold in 1965 for \$45.00 in a home sale. It sold again in 1967 privately for \$650.00 and was sold again in 1968 for \$1050.00. In 1976 it brought \$4,500.00 and in 1981 went to its present owners at a reported price of \$10,000.00 in cash and some trade. It is a straight topped example with excellent finish and color.

One green example is known. It first appeared in the carnival world in 1965 when purchased from a Chicago art glass dealer for \$75.00. It was sold in 1974 in Indianapolis, Indiana for \$7,100.00 and again in 1981 to a Texas collector. This example has fantastic radium finish and is beautiful emerald green.

One cobalt blue vase is known. It is probably the most acclaimed of all the vases. In 1963 it went to a Kansas collector for \$75.00 who in turn consigned it to an auction where it brought \$1350.00 in 1967. In 1969, the "big blue" went to California at a price of \$2,700.00 only to be purchased by a Kansas auctioneer in 1973 for \$4,500.00; he in turn put it into a sale the same year where the price paid was \$8,100.00. But in 1982, the vase went to Texas to sit beside the green one for only \$5,100.00, probably one of the best buys of the year. A second blue vase has been reported but not shown at this time. Both the blue and green vases are straight topped.

The final two vases are both amethyst and have ruffled tops. One has remained in a private collection for many years. The second vase first sold in 1971 in its native county. That same year it went to an Ohio buyer for \$2,500.00 and three years later brought \$4,000.00. A few months later the Kansas auctioneer paid \$4,400.00 for it and sold it to a collector for \$10,000.00 in trade and cash. In 1977 this vase went to the Texas collector for \$5,900.00 where it sits with the green and blue examples.

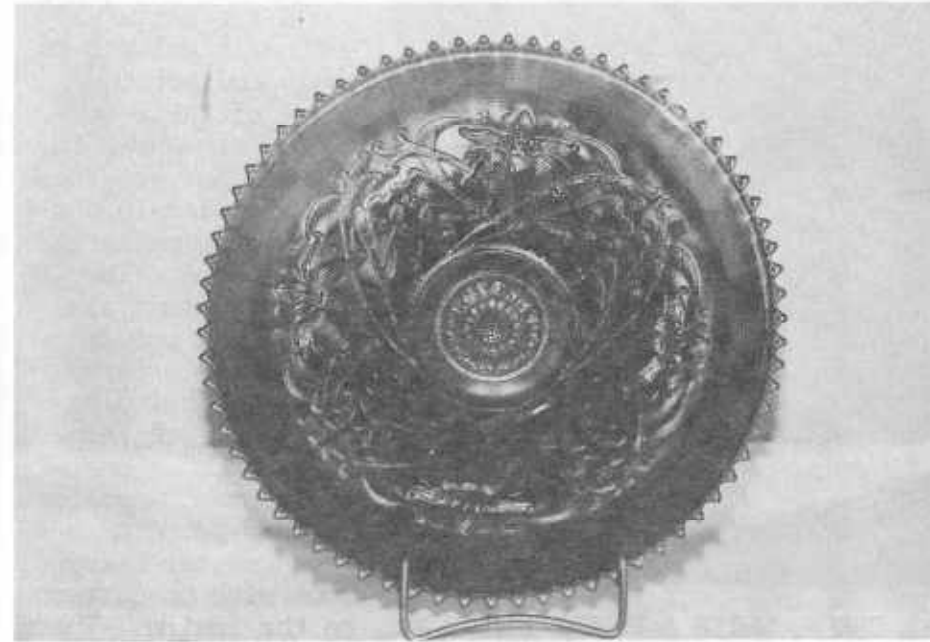
Many tales have arisen from time to time about the origin of these rare and beautiful vases. We do know that they are definitely from the Millersburg plant since an Ohio area dealer has dug up several recognizable shards from the factory site. These shards are all in amethyst, although rumors of crystal shards have been reported. These are, so far, only rumors.

As for the design of the vase, many believe the people depicted on the vases are Amish and are shown celebrating a successful harvest, one of the few occasions their strict religion allowed such dancing. Perhaps this is true, but I cannot say with certainty. At any rate, the glorious People's Vase is one of the prizes of the carnival glass world and stands tall in craftsmanship and beauty. It is, literally, Millersburg at its best.

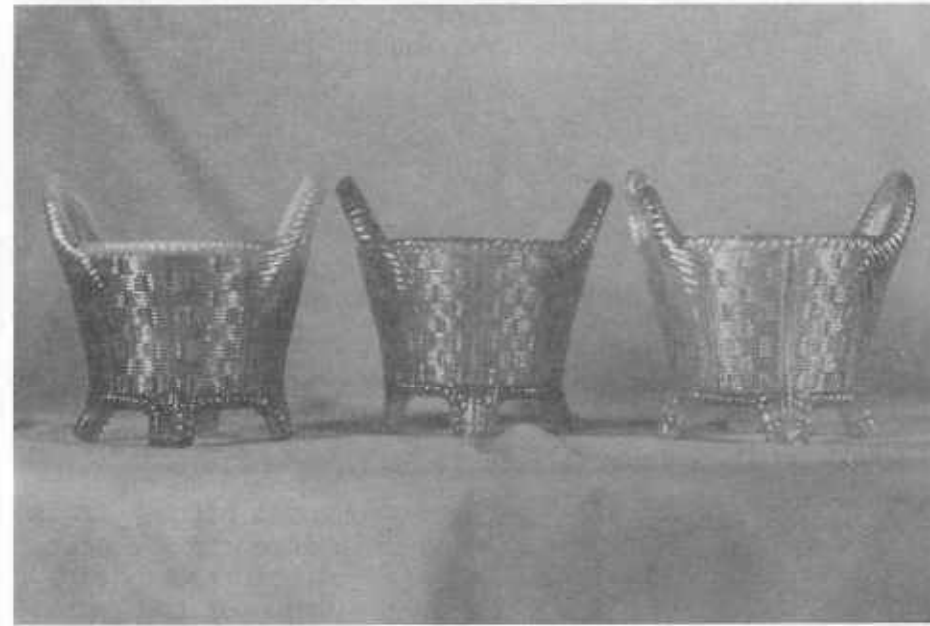


This is a special article. It could have been written by almost any H.O. A.C.G.A. club member. It is to honor and thank our bulletin editor for his fine work at that job and also present some of the highlights from his carnival glass collection. All of our members certainly owe a great deal of thanks to Don Kime for all the fine work that he has preformed as our bulletin secretary. He has spent many long hours putting these bulletins together each and every month of the year. He has served as H.O.A.C.G.A. bulletin secretary for a total of four years. You would have to act as bulletin secretary yourself, to fully realize all the work and time that he has done as our editor. Probably there are many of you who have not personally met Don. In addition to acting as our bulletin secretary, he keeps very busy at his Bell Telephone job in Wichita, Kansas and does not have very much time to attend many of the carnival glass auctions and conventions. He is also convention Chairman for the Air Capital Carnival Glass Club. He collects carnival

glass along with Roland Kuhn. Roland works as freight dispatcher for Frontier Airlines in Wichita. Don is shown above holding two of their favorite pieces--Wishbone bowls in pastel green and aqua opalescent. They also have these bowls in white, aqua, pastel blue, cobalt blue and many other carnival colors and shapes. On the following pages we will show just a few of the highlights from their very fine collection. The Wishbone chop plate in photo No. 2, is the only one of these ever reported in emerald green. It was found a few years back by Osteen & Mary Lou Smith of Cornith, Mississippi and later found its way into the Kime & Kuhn collection. Don & Ron have the "Wishbone" chop plates in three different colors.



WISHBONE CHOP PLATE IN EMERALD GREEN



NORTHWOOD BASKETS IN PASTEL GREEN OPALESCENT, VASELINE AND PASTEL BLUE

Don is especially proud of their collection of Northwood baskets. Snapshot No. 3 shows three of them in the very rare colors of Green Opalescent, Vaseline and Pastel Blue. They also have examples in blue opal, emerald green, pastel green, horehound, white and smoke, as well as examples in the more common colors. The vaseline basket is their favorite and is certainly one of the rarest colors found in the Northwood baskets. The "Northwood Grape and Cable" master punch set in marigold is the largest piece of carnival-glass in their collection. They are justly very proud of this fine set and it adds beauty and color to their living room. Their favorite water sets are those in the "Wishbone" pattern. They have these in several different colors. Their green "Oriental Poppy" and blue "Butterfly and Berry" are other water sets that rate high on their list.



"Daisy & Plume" rose bowls are certainly another highlight of their collection. Three of their favorites are shown in picture No. 4. These are examples in pastel green, white and pastel blue. They also have many pieces in the popular "Butterfly & Berry" pattern, including the very rare fernery. Another one of their unusual pieces in this pattern is a green master berry bowl with no pattern on the inside. Their favorite mug is the "Fisherman" in peach opalescent. Picture No. 5 illustrates one of their five "Wishbone" epergnes. They are looking for examples in pastel green and aqua opalescent. Another piece that Don is always proud to show is an unusual colored "Round Up" plate that is illustrated in picture No. 6. This rare plate is probably an experimental piece. It is painted in a number of colors and iridised over the paint. This plate was purchased by John Britt

DAISY & PLUME IN PASTEL GREEN, WHITE & PASTEL BLUE



WISHBONE EPERGNE IN PASTEL BLUE



RARE EXPERIMENTAL COLORED ROUND UP PLATE



RARE GRAPE & CABLE FRUIT BOWL WITH BLACKBERRIES INTERIOR

at the Rose Presznick auction at Louisville, Kentucky in 1973 and was later bought by Don & Ron at the Britt auction in St. Louis. It is the only one that has ever been reported in this unusual color. Another great rarity in their collection is the "Grape & Cable" orange or fruit bowl with the Blackberries on the interior. This is one of only two that are known to exist. This unusual bowl is shown in picture No. 7. Don & Ron also have a large collection of vases, bonbons and compotes. While they are proudly showing and discussing their beautiful collection, you soon get the impression that tumblers are their greatest love. They have a nice collection of 250 tumblers. They are displayed on shelves in their kitchen. The green "Inverted Feather", purple "Harvest Flower" and amethyst "Morning Glory" are three of their favorites. Their goblet collection would

COMING ATTRACTIONS  
CONVENTIONS



also have to be mentioned. Three of their rarest and most beautiful examples are the extremely rare "Northwood Near Cut" in marigold and the tall "Sailboats" in amethyst and green. Only four or five of these are known to exist in each of these two colors. This is only a few of the highlights from their very fine collection and we are sure that they would be very happy to show it to all interested collectors that might be driving through the Wichita, Kansas area. We hope that this will better acquaint everyone with Don, his work and his interests in carnival glass collecting. To Don, again we would like to express our sincere thanks for a job well done and we all wish you continued success in your chosen work, and also in the field of carnival glass collecting. This, we are sure, comes from the hearts of all the members of the H.O.A.C.G.A.



APRIL 21-22-23-24

HEART OF AMERICA CARNIVAL GLASS ASSOC. - Convention, Holiday Inn, Mission-Overland Park, Kansas.

JUNE 3-4-5

LINCOLN LAND CARNIVAL GLASS - Convention, Holiday Inn, I-90 & Rt. 53, Rolling Meadows, Ill 60008 PH 312-259-5000

JUNE 16-17-18

NORTHERN CALIFORNIA CARNIVAL GLASS CLUB. - Convention, Sierra Inn, Sacramento, California

JULY 7-8-9

AMERICAN CARNIVAL GLASS ASSOC. - Convention, Penn-Harris motel, Camp Hill, Pa

JULY 28-29-30

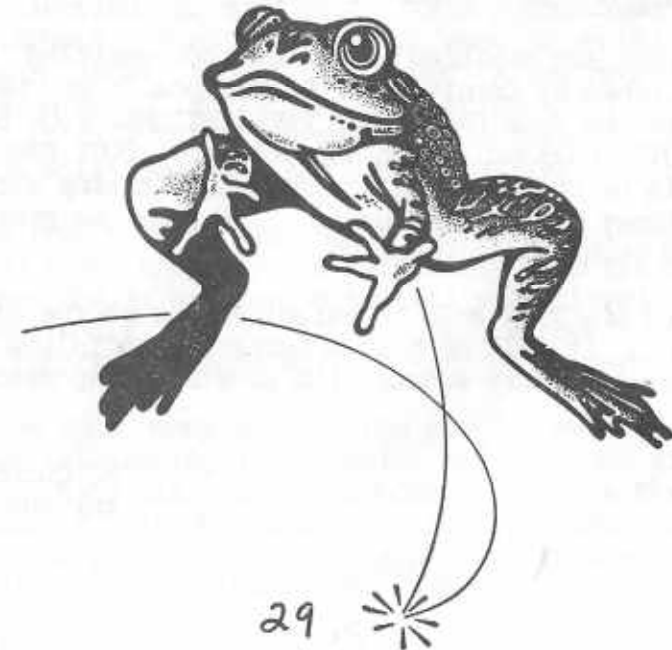
INTERNATIONAL CARNIVAL GLASS ASSOC., - Convention, St. Louis, Mo.

AUGUST 11-12-13

PACIFIC NORTHWEST CARNIVAL GLASS CLUB - Convention, Holiday Inn, Eugene, Or

OCTOBER 7-8

AIR CAPITAL CARNIVAL GLASS CLUB - "Mini Convention", Sheraton Airport Inn, I-235 & US 54 West, Wichita, Kansas 67209





May I refer to recent discussion concerning the following patterns, designated as coming from Eda factory, Sweden?:- CURVED STAR, HEAD-DRESS, TRIANDS, LATTICE AND LEAVES, FOUR FLOWERS variants, COSMOS AND CANE.

With the assistance of Mr. Gunnar Lersjö (author 'Eda Glassworks' 1977) and assisted with the aid of a working party sponsored by the Swedish Workers Education Authority, I have been investigating Scandinavian production of 'Carnival Glass' (Lustre ware) from that area. By direct reference to both the 1929 Iridised Eda Catalogue with the 1929 Pressed Glass Eda Catalogue and the Factory records and local Museum records, it has as yet been impossible to attribute the following patterns definitely to Eda: HEAD-DRESS, TRIANDS, LATTICE AND LEAVES. Neither have local collections shown these pieces.

Curved Star pattern was made at Eda under name 'LASSE' suite with a DAGNY vase but the mould did not include the 'Head-dress pattern shown on many curved star pieces. Eda suffered a temporary closure when moulds were sold to other Scandinavian glasshouses, who might have added the Head-Dress pattern. Triands pattern was made at Royal Leerdam Holland and since this Company initiated its own design school to avoid plagiarism in design, it would be very surprising if this pattern was copied to order then placed in the Leerdam Catalogue where it can be traced quite clearly. This is not in the Eda catalogues. Lattice and Leaves is also unknown to date at Eda despite intensive research. Four Flowers variants and Cosmos and Cane variants appear in various Scandinavian Lustre Ware producer factories, though the USA version known as 'Variant 4 Flowers' with external thumbprint pattern has again not been traced to Eda.

All these patterns are depicted in my new book entitled 'CARNIVAL GLASS WORLDWIDE' published by Carnivalia Publications UK end March '83. This book can be obtained from CARNIVALIA PUBLICATIONS, P.O. box No. 1, Lostwithiel, Cornwall, PL220YZ, England. at \$6.75p per copy, POST AND PACKING FREE to USA/UK/AUSTRALIA or SCANDINAVIA. Payment in Sterling currency only, by International Money Order from abroad. The book has over 200 full colour photographs and much new information.

Further research might be able to establish the source of these patterns attributed to Eda, it will be most interesting to follow up and research continues apace at factory source with government sponsored aid.

M. Quintin-Baxendale  
England

\*\*\*\*\*

When we heard of another Tom Burns auction at New Philadelphia, Ohio on April 8-9th we knew we had to go. After the long winter of doing nothing it was a welcome opportunity to start the carnival action for 1983. We had been unable to attend the other auctions that had been held to far away for winter driving.

We went a day early to visit at Canton also drove over to Millersburg on Friday to stop at our favorite Amish orchard which to our surprise still had bushels of apples and the sweetest cider in all the world. A stop too at a nice cheese house to re-stock on about any flavor cheese you can think of. It was a nasty rainy day but we had a delightful lunch at one of the Amish restaurants-with long time friends-Betty and Raymond Heeley from Painesville, Ohio.

We had reserved our motel room for Thursday and Friday nights. We were back a little early for the 4 PM preview so had some extra time to visit rooms that had carnival displayed for sale. We begin to see so many Carnival people we almost thought it was a convention. The carnival glass was well dressed in its exceptional beautiful iridescence. Almost asking for some one to take it home to love. The owners were there and I feel sure did hate to see it go but they said they planned to build a new home and that seemed a fair exchange.

Our opinion is it was one of the best auctions we have ever attended. 118 bidding numbers were given out and they were well used by most persons too. The bidding remained brisk even to the end and also on almost every item- so few bids went to the write in number and that had to be proof of very good prices all the way.

We had speculated ahead as to what might be the highest item. That was a hard choice as there were several potential on that list. The green Wish-bone water set went for \$1600 so that was so good. We had sort of picked the green Millersburg Hobstar & Feather rose bowl for highest so began to wonder about our choice. We loved it and knew we would probably not want to pay its price - Which certainly came true at \$2000. A nice couple from New York took that treasure home. We heard someone had sent in a \$2000 bid so we never had a chance from the beginning.

When the Millersburg Hobstar & Feather punch bowl in green-with amethyst base came up we decided to bid on it since the rose bowl escaped us. We were surprised to get it so reasonable-then we had to get the two green cups of course. At the time we forgot we had no place to put it so that is a problem right now. If anyone should have a green base to this punch bowl

please remember we want one. It seems no one knows of one, yet that's no sign there aren't any. We hear of "unknowns" every year.

We feel the owners were well pleased at sale results and if they were then Tom would be. We are happy for them both and to know carnival does so well despite economic conditions proves its undying popularity. Must mention Bill Richards always takes turns with Tom auctioneering and the two go together like ham and eggs. No comment on that description as to who might be ham or eggs-both are great.

We thoroughly enjoy the auctions and came home in the worst rainstorms ever. In fact all three days were quite rainy. If the sun had been shining we couldn't have enjoyed it more. Another auction date was set for May 20-21st near Cleveland. Maybe we can go to it. Anyway it's nice to dream of as we wait for a list to whet our appetites.

Grace & Byron Rinehart  
Charleston, West Virginia

\*\*\*\*\*

#### MILLERSBURG REBOUNDS

After being severely beat up at the Hill Auction in St. Louis last month, Millersburg rebounded nicely at the Tom Burns Auction of the Jenkins collection on April 8th and 9th. The Auction was held within spitting distance of Millersburg at the Holiday Inn in New Philadelphia, Ohio. One of the theories advanced for the turnaround was that after the Hill Auction, the Millersburg specialists swore that they wouldn't pass up another opportunity to buy Millersburg at bargain prices again. Tom Burns felt that the Ohio location was also a prime factor. If these ideas are correct, the Burns Auction of the fine collection of Ed and Marie Garner of California in Cleveland May 20th and 21st should be a pistol. The Garners have progressively culled their collection to one of the finest in the west. The collection is estimated to be 60% to 80% Millersburg and contains many rare colors and shapes. Tom previewed the only known blue Millersburg Dolphins compote at the New Philadelphia Auction, which will be included in the Garner Auction. That's right, blue.

Bidding was lively both Friday night and Saturday, with the Millersburg being sold on Saturday. Like all auctions, there were some bargains and some surprisingly high prices. Color was the driver. Several of the red prices were the best I had ever seen and only a few dings kept them from setting record prices. Plates were especially strong with an outstanding cobalt Rose Show bringing \$550.

Water pitchers and sets sold good, but only if they were perfect. Aqua Opal as usual, held its own. The Good Luck would have brought more than its \$500 selling price but for its light opal. The "steal" of the auction and maybe of the year, was made by Gracie and Byron Rinehart when they knocked down the massive Green Hobstar and Feather Master punch bowl and base for \$700. They were last seen fleeing towards West Virginia with three, siren screaming police cars in pursuit.

Quite a lot of hallway discussion centered around the ever increasing criticality of the audience and auction staff regarding small pin head and flake "damage". Tom runs an unscrupulously honest auction when it comes to defects in the glass. As most of us know, carnival is generally 50 to 70 years old, and much has been "out" for its owner to use and enjoy during its entire lifetime. Rare, rare, indeed, is the piece that does not have some minute after-manufacturing flaw. On the other hand, significant chips and cracks obviously decrease the value of the glass and must be called. I feel that there is room for a happy medium at auctions. We as buyers, can and must expect chips and cracks to be "called". However, I feel that we also should be treated to a lively auction pace without the constant interruption of "pin head discussion" (I am referring to the glass, not the audience-sort of). We owe it to the auctioneers, the owners and ourselves to turn around the obvious attempts to bring down the value of the glass so we can buy it cheaper by making much ado about insignificant flaws. If you are interested in a piece, you owe it to yourself and others to spend all the time you need during the preview making sure you know the exact condition of that piece. Do not bore everyone else with your "expertise" as a watch-maker. We are not interested. Remember, the final bottom line is that you too, will probably sell your glass someday. Think about it.

John Muehlbauer  
California

Note: John sent a list of several prices that were received at this auction but I had already received a list from the Rineharts so for the sake of duplication of many of the pieces, I only put the one list in. Thanks John for the article and I do appreciate all the work that you went to to furnish us with some of the prices.

Editor

\*\*\*\*\*

A TRIP TO REMEMBER

It was a great privilege to be asked to speak at the 1983 convention and I really enjoyed visiting with as many people as I could. I learned a great deal by studying all the lovely glass everyone had brought and met several great carnival personalities that I had only admired from a distance. The patient kind and constructive comments and criticism I received in Kansas will keep me busy for a long while. A great deal of new and interesting information is always exchanged by collectors at these conventions, and I am looking forward to following up a great number of points that people brought to my attention. I will do my best. I would also like to put on record that my visit to see Mrs. Hartung at her request, in the company of Donald Moore and Roland Kuhn, was a moving and in the circumstances, a truly inspirational one. A great lady, a remarkable personality and a pioneer advocate of a much misunderstood great American artifact.

Ray Notley  
Wichita, Ks (Temporary resident)

\*\*\*\*\*

For Next Year Lets Keep The Bulletin like it is and do not cut corners.  
It is well worth \$20.00 per year.

Thanks  
The Caudles  
North Carolina

\*\*\*\*\*

We have read with interest the comments on the proposed increase in dues. We look forward to the newsletter, since we are unable to attend conventions not close to home, and its our only way to "keep in touch". Also its the only one coming once a month and we appreciate that. We do not think \$20.00 is too much to pay for all the benefits that we receive from this bulletin. When "dues time" comes we intend to re-subscribe at whatever the price.

Carl & Esther Rodgers  
Brinkhaven, Ohio

\*\*\*\*\*

The Tampa Bay Carnival Glass Club held their regular monthly meeting Sunday April 17 at the home of Maria and Nick Vafiadis in Tarpon Springs. Ruby Pitt was co-hostess. Following the traditional devouring of all the specially prepared good food the business meeting begin.

Shirley Conyers submitted the Secretarys report followed by the report of Treasurer, Dorothy Smith. Additional plans were discussed for the third annual Lose Your Heart to Carnival Glass Jamboree to be held February 10 and 11, 1984. LaVerda Mudd and Darlene Bronson, residents of Jacksonville and members of the Jacksonville Club as well as the Tampa Bay group, attended the meeting and offered the cooperation of the Jacksonville club for the jamboree. Plans are being made for a joint meeting to plan for their participation. A resolution was adopted commending Donald E. Kime for his outstanding contributions to the hobby of carnival glass collecting while serving as Bulletin Secretary for H.O.A.C.G.A..

An interesting program featuring members discussing their first carnival glass acquisitions and showing the same proved entertaining. Following a white elephant auction the meeting adjourned. The next meeting will be with Lily and Eddie Laman in Auburndale, May 15, 1983.

Arthur Smith  
Florida

\*\*\*\*\*

Dear Members:

I begin this letter with an "Amen" to Don Moore's entry in the April bulletin regarding pool-side room reservations at conventions. I strongly agree that those offering a major contribution to the club deserve the best accomodations for displaying their glass.

I feel my endorsement to Don's suggestion is a meaningful one because I, personally, have a very ordinary Carnival glass collection, and could never expect a pool-side room reservation under his plan. Until I win the Michigan lottery, I am content just to be in the same "clump" as the rest of the members, and to admire the more-advanced collections through pool-side windows.

I felt so discouraged to read Grace and Byron Rinehart's decision to discontinue their contribution to the bulletin. I sincerely hope they will reconsider, because I look forward to reading their articles each month, and appreciate the time and effort they take to share with us. Cutbacks

AUCTION REPORT

have to stop someplace, and what good is a newsletter if there is no news?

This year's work schedule does not allow us to attend a convention, and I will surely miss the excitement and friendship afforded us in the past. I want to thank all the members who displayed such beautiful specimens of Carnival, some of which I might, otherwise, never have had the opportunity to see.

I send the best from Northern Michigan,

Raleigh A. Jacques

\*\*\*\*\*

FROM Ray Notley

I will be resuming my Sowerby articles, which are far from complete, in the Fall. I have to take my time preparing, very carefully, the documentation and labelling for the Carnival Glass-Poor Man's Tiffany Exhibition which opens on August 13th at Nottingham Castle, England. There are around 600 pieces in nearly 300 different patterns to be captioned and described as accurately as is humanly possible. I also hope to resume work on a major history of Carnival which is many years work. Much of the material which I mention in passing will find a permanent place in this volume, which even after four years work is just about up to 1913. In the meanwhile my CARNIVAL GLASS booklet is now published in the USA as well as in Australia and the United Kingdom. This booklet, like Carnival itself, offers good value for low outlay. The full sequence of Carnival production is illustrated and the line is drawn quite firmly between the prime, and all supreme, American product and the secondary glass made in Australia and Europe. Carnival is given its correct place in the iridescent art glass family. This is the only book that has been commissioned in the UK by an independent and highly respected publisher. CARNIVAL GLASS by Ray Notley. Shires Album # 104. ISBN 0 85263 637 7. Price is only \$3.55 including postage. Send to 7 Hills Books, 519 W. 3rd. Street, Cincinnati, Ohio 45202.

\*\*\*\*\*

I want to thank everyone who had anything to do with it, for a great convention. I had a ball. Connie was sorry she could not attend this year. In view of all the things I bought, I suspect it is my last convention without her.

Don Moore

\*\*\*\*\*

Another quite successful auction was held by the Tom Burns Auction Service at New Philadelphia, Ohio, on April 8-9, 1983 at the Holiday Inn, New Philadelphia, Ohio. As you will see some good glass was for sale and some fantastic prices were received for the glass.

- Coin Dot rose bowl Vas/G 105
- N G/C pitcher 2 tumblers P 195
- N G/C pitcher 2 tumblers G 235
- N G/C cov tobacco humidor P 350
- N G/C whiskey decanter Lt M 225
- N G/C shot glass M 135
- N G/C 8 pc punch set P 325
- N G/C 8 pc banquet punch set P rare 140
- Dugan Wreath Cherry water pitcher P 300
- Bu-terfly & Fern water pitcher B 350
- Butterfly & Fern water pitcher G 450
- Dragon & Lotus ice cream bowl R 475
- Peacock & Grape bowl R 450
- Little Flowers ruffled bowl R 900
- Leaf Chain bowl R 475
- Peter Rabbit plate B 500
- Holly bowl R 600
- Plaid bowl R damaged 350
- Pastel Swan P 95
- N Singing Bird mug B 60
- N Singing Bird mug G 60
- Beaded Shell mug B 90
- N Dandelion 7 pc water set P 650
- N Dandelion 7 pc water set M 525
- N Dandelion tankard pitcher G 750
- Peacock at Fountain EB 275
- N Oriental Poppy 7 pc water set P 700
- N Oriental Poppy tankard pitcher M 450
- N Peacock bowl T 300
- Stork & RUshes 7 pc water set M 185
- WIne & ROses water pitcher M 115
- Footed Orange Tree water pitcher B 300
- Daisy & Latfice 7 pc water set M 195
- N Leaf & Beads ftd rose bowl AO 225
- N Wishbone 5 pc water set P 1300
- N Wishbone 5 pc water set G 1600
- N Greek Key water pitcher P 250
- N Good Luck bowl AO 500
- N Peach covered butter dish W 195
- N Springtime cov butter G 400
- N Peacock bowl AO 450
- N G/C tankard pitcher M 500
- Rose Show bowl IG 700
- Daisy & Drapery ftd vase AO 300
- N Singing Bird 7 pc water set G 600
- N SINGing Bird 7 pc water set M 425
- Cosmos & Cane compote W 205
- N Peacock at Um master bowl P 250
- N Peacock at Um master bowl W 250
- N Peacock at Um master bowl M 300
- N Grape Arbor tankard pitcher IB 575
- N Grape Arbor 7 pc water set P 650
- N G/C banana boat IB 400
- N G/C sweetmeat P 230
- Pulled Loop vase Aq/butterscotch 87.50
- Millersburg Feather & Heart pitcher P 475
- Atlantic City Elk plate B 550
- Birmingham Age Hearld bowl A 500
- Millersburg Ct House bowl A 425
- Millersburg Maryln water pitcher G 800
- Millersburg Hobstar & Feather giant rose bowl G 2000
- Millersburg sq Fish bowl M 400
- Millersburg Milti Fruits & Flowers punch set M 525
- Millersburg Blackberry Wreath bowl B 450
- Millersburg sunflower pin tray A 110
- Millersburg hanging Cherry cov butter dish 200
- Millersburg Diamond water pitcher M Lt M 250

We would like to thank Grace & Byron Rinehart for sending these prices to us.

MEDLEY AUCTION

Here are a few of the prices obtained at the Larry Medley auction held in Grand Island Nebraska April 10, 1983. Thanks to John & Lucile Britt for providing us with this information.

Horse Medallion bowl P 110	Peacock & Grape bowl M 40
Peacock & Um bowl B 85	Peacock on Fence bowl AO 385
Trout & Fly A 410	Three Fruit bowl G 45
Emu Australian M 55	Acorn Burr 7 pc water set 620
Stag & Holly B lge bowl 150	Flute tooth pick 65
Nesting Swan A 150	G/C candle lamp G 450
Rose Show plate EB 200	Town pump ivy P 450
Peacock & Um ice cream set 7 pc A 425	G/C tankard pitcher A 450
Windflower bowl B 55	Fishermans mug P 85
Millersburg Holly Sprig bowl A 50	1911 Elk bowl B 300
Seacoast pin tray AM 300	Floral & Grape pitcher B 140
Orange Tree loving cup B 100	G/C 7 pc water set M 220
Heavy Grape water bottle P 160	Fleur De Lis bowl A 180
Birds & Cherries bon bon B 70	Ten Mums bowl A 185
G/C plate A 60	Peacock & Um ice cream bowl A 500
Butterfly & Berry butter dish B 125	Vintage epergne B 90
G/C butter dish P 110	Heavy Iris 7 pc water set M 600
G/C sweetmeat P 200	Many Fruits punch bowl P 575
Kitten cup & saucer M 130	Peacock at Fountain pitcher 3 tumb 410
Kitten tooth pick PM 110	Singing Birds 7 pc water set G 540
Strawberry plate P 65	G/C hatpin holder P 130
Peacock at Fountain 4 pc table set P 340	Orange Tree hat pin holder B 140
Orange Tree ftd bowl B 130	Nesting Swan bowl M 130
G/C fernery P 490	Panelled Dandelion pitcher 6 tumblers A 485
Dandelion tankard pitcher M 150	Mikado bowl M 70
Good Luck bowl B 185	Stag & Holly bowl large M 105
Good Luck bowl M 65	Holly plate B 85
Holly bowl A 75	Nautilus PO 165
Windmill & Mum bowl 65	Little Bo Peep mug M 125
G/C large bowl P 95	Panther 7 pc berry set M 220
Blackberry Wreath Millersburg bowl 90 G	Round Up bowl PO 210
Thistle bowl M 35	Millersburg Strawberry compote A 140
Dragon & Lotus collar base R 425	474 milk pitcher 210
Peacock & Grape V 300	Raspberry milk pitcher P 160
Dragon & Lotus bowl B 50	Thistle banana bowl B 130
Dragon & Lotus bowl G 50	Wreath Cherries banana bowl P 100
G/C 7 pc water set A 375	Ski Star bowl PO 120

The Tom Burns auction held in conjunction with the HOACGA convention on April 23, 1983.

G/C N centerpiece bowl A 275	N Beaded Cable rose bowl AO 225
G/C N candlesticks M 120	N Fruit & Flowers compote AO 250
N Oriental Poppy tankard pitcher G 650	
Pony bowl A 150	Pine Cone plate B 195
Orange Tree Variet tankart pitcher M 300	
Orange Tree Orchard water pitcher W 450	
Heavy Grape large bowl A 250	Lions plate M 400
Kittens cereal bowl M 105	Cosmos & Cane domed ftd bowl M 625
Peter Rabbit ruffled bowl M 950	Three Fruits plate EB 175
Stag & Holly ftd chop plate M 550	Fenton Peacock at Urn plate B 225
Stag & Holly ftd bowl AQ300	Round Up plate W 200
Millersburg Peacock at Urn ruffled bowl B 425	
N Peacock at Urn 6 pc ice cream set EB 700	
N Peacock at Urn master ice cream bowl IB 475	
N Peacock at Urn master ice cream bowl W 325	
N Peacock at Urn master ice cream bowl IG 650	
Many Stars ice cream shape bowl A 325	Open rose plate A 105
Little Stars ruffled bowl M 200	Loganberry vase M 200
Millersburg Swirl Hobnail vase P 100	Good Luck plate P 225
Millersburg Ohio Star vase M 400	Open edge hat R 225
Persian Garden 6 plate PO 180	Open edge hat 2 sides up R 275
Fishermans mug PO 900	Ruffled Hat R 225
Pods & Posies chop plate PO 375	Orange Tree bowl G 110
Wishbone & Spades chop plate P 800	Orange Tree hat pin holder B 130
Peter Rabbit plate G 2800	Dragon & Strawberry ftd bowl G 400
Rose Show plate IG 525	Brooklyn Bridge bowl M 220
N Cherry & Cable water pitcher M 1250	Ski Star bowl PO 85
Lotus & Grape plate G 600	Panelled Cherry ftd bowl P 95
Blackberry miniature compote W 400	Blackberry Spray hat R 125
Fashion tall compote S 150	Oriental Poppy tumbler A 45
Strawberry plate M 125	N Raspberry tumbler G 35
Panther master centerpiece bowl B 900	Blueberry tumbler B 45
Stag & Holly spatula ftd bowl R 1050	Floral & Grape tumbler B 45
Orange Tree bowl R 825	Windmill & Mums ftd bowl B 100
N Wide Panel 4 lily epergne G 750	Holly plate M 150
Dragon & Lotus bowl R 675	Acanthus plate M 175
Carolina Dogwood bowl B 325	Orange Peel 14 pc punch set M 210
Daisy Wreath bowl BO 400	Sailboat sauce B 55
N Heart & Flower compote 110	Fanciful plate B 100
N Drapery rose bowl AO 105	Millersburg Hanging Cherries bowl G 7

CARNIVAL GLASS RARITEIS-A color line approach. Lists the top 10 rarities in each color-plus complete rarities price guide-40 pages of black and white pictures-special section on whimsys-\$8.50 pp. Also THE SHAPE OF THINGS IN CARNIVAL GLASS, 110 pages, 200 items in full color-\$9.95-Donald Moore, 2101 Shoreline Drive, Apt 462, Alameda, Ca 94501

CARNIVAL GLASS SERIES, each book has 100 different patterns illustrated and described-10 books in the series, books 1,2 and 3-\$3.00 ea, books 4 thru 10-\$3.50 ea. New edition 1981-82 price guide-\$5.00 pp, Northwood Pattern Glass-clear, colored, custard and carnival-\$9.95 plus 50¢ postage. Marion T. Hartung, Box 69, Emporia, Kansas 66801

CARNIVAL IN LIGHTS-A full color book on Carnival Lighting, including Gone With The Wind Lamps, Candle Lamps and shades-price guide included-\$11.95 plus postage, Helen Greguire, 103 Trimmer Road, Hilton, New York 14468

CARNIVAL GLASS TUMBLERS-Author Richard Owens-order from Mr. Don Brown, Wallace-Homestead Book Company, 1912 Grand Ave., Des Moines, Iowa 50303

IMPERIAL CARNIVAL GLASS-THE EARLY YEARS-\$9.95, FENTON CARNIVAL GLASS-THE EARLY YEARS-\$9.95, New price guide 1981-82 edition-\$3.95-MILLERSBURG THE QUEEN OF CARNIVAL GLASS-\$8.95, THE STANDARD ENCY. OF CARNIVAL GLASS-650 different full color patterns photographed, 223 page hardbound illustrates and evaluates Dugan, Fenton, Imperial, Millersburg, Northwood, Minor American, English Carnival, and more-\$24.95, 'Northwood, King of Carnival Glass-\$9.95, Bill Edwards Author, Collectors Books, Paducah, Kentucky.

CARNIVAL GLASS PRICE GUIDE-Sherman Hand - Charlotte Williams-\$5.95 pp. Order from Sherman Hand, 127 Olympic Circle, Vacaville, Ca 95240 or Charlotte Williams, 630 N Lower Sacramento Rd., Lodi, Ca 95240

FENTON GLASS-THE FIRST 25 YEARS- 144 pages, 72 in full color, more than 400 items pictured in Fenton's carnival and iridescent "stretch" colors, rare catalogue reprints (some in color), a complete history of the factory's early years, from 1907 to 1932, \$15.95 for softcover edition with price guide, \$20.00 for limited edition hardbounds. Order from the author, William Heacock, P O Box 27037, Columbus, Ohio 43227.

Angela Hallam's 52 page fully illustrated paperback-first book to tell about the English-made Carnival-\$3.35 surface postage, air mailed \$4.35 Order from Wise Books, 82 Chart Lane, Reigate, England, RH2 7EA

1983 Edition--CARNIVAL GLASS AUCTION PRICE REPORT. A list comprised of over 4600 sale prices of Carnival, 2300 of which are from 1982 auctions. Patterns are alphabetical by Hartung name. Information includes description, shape, color, sale price, date, auctioneers and sellers names. and a separate section for advertising and souvenirs. Single copy price for the 8 1/2" X 5 1/2" list is \$8.00 postpaid. Only 200 copies to be printed. Al & Wendy Rettke, 14226 East 143rd Lane, Burnsville, Mn., 55337

CARNIVAL GLASS--by Ray Notley, Shires Album # 104. ISBN 0 85263 637. Price is only \$3.55 including postage. Send to 7 Hills Books, 519 W. 3rd. Street, Cincinnati, Ohio 45202.

CARNIVAL GLASS WORLDWIDE--by M. Quinton-Baxendale-Price £8.75p per copy, POST AND PACKING FREE TO USA/UK/AUSTRALIA/ or SCANDINAVIA. order from CARNIVALIA PUBLICATIONS, P.O. Box No. 1, Lostwithiel, Cornwall, PL220YZ, England. Payment in Sterling currency only, by International Money Order from abroad. 200 full colour photographs and much new information.

OTHER REFERENCE MATERIAL

Presznick's "Encyclopedia of New Carnival and Iridescent Glass". A great reference book with color plates galore and prices, \$19.95. Reichel's "Modern Carnival Glass." 100 illustrated pages of Carnival made since the 1960's. Volume 1, \$4.00, Volume 2, \$4.95, Price Guide for both volumes \$2.50. Add \$2.00 for shipping and insurance. Theodore A. Parent, Box 596, RD 1, Canfield, Ohio. 44406

"Encore by Dorothy" books 1 and 2. A series of books on new reproduced Carnival Glass, giving information on the patterns and colors that are being reproduced. An invaluable asset to the old carnival collector, possibly saving him many dollars by knowing what has been reproduced. Price for each book is \$7.70 postage paid. Be sure to state which book you want. Dorothy Taylor, Box 11734, Kansas City, Missouri, 64138

\*\*\*\*\*

41

FOR SALE

John Decker, 5047 Russell Rd, Marion, N Y 14505 PH 315-926-4439

G EI	Vintage wines 2 ea	25
B EI	Vintage epergne rough on bottom of lily	85
B EI	Panther ftd 5" bowl	50
M EI	Singing Bird mug	40
P EI	Sunflower bowl	45
P EI	Jesters cap 6 1/2	40
G EI	Coin Spot rose bowl	45
IG EI	Swan	20

\*\*\*\*\*

Sal Aartsma, Box 1132, Patterson, N J 07509 PH 201-278-3630 aft 5:30 PM

LM EI	NuArt shades 3 matching for	50
DA EI	Large berry bowl 16 flutes 9" X 3 1/2	39
G EI	Feathered Serpent 7 pc berry set	135
M EI	Octagon Variant water pitcher	95
W EI	Grape Delight rose bowl sm chip under 1 ft	35
M EI	Cathedral creamer	24
M GI	G/C 11" shallow bowl N	30
M EI	Bird & Grape wall vase	32
W EI	Lined Lattice vase 10 1/2	34
M EI	Cane & Flute creamer	35

\*\*\*\*\*

Sterling Butz, 221 N. Adams St, Allentown, Pa 18104

M EI	Danaelion tumbler	30
M EI	Oriental Poppy tumbler	30
M EI	Grapevine Lattice tumbler	30
B EI	Daisy & Drape vase	140
M EI	Peacock & Grape plate ftd	140
M EI	Peacock & Grape plate flat	140
G EI	Fine Cut & ROses rose bowl	80
A GI	Wreath of Roses rose bowl	60
B EI	Ribbon Tie ruffled plate	150
G EI	Peacock at Fountain creamer N sm base chip	175

\*\*\*\*\*

Ernest Caudle, Rt 1 Box 87, State Rd, N C 28676 PH 919-874-2519

M EI	Butterfly & Berry butterdish	115
B EI	Orange Tree creamer ftd	75
B EI	Butterfly & Fern water set 6 pc	625
B EI	Stork & RUSHes 7 pc water set	450
B LI	Round Up plate	175
W EI	Peach 7 pc water set (N)	950
IB EI	Poppy Show bowl	365
A EI	Millersburg Boutinaire compote	75
G EI	Grape & Gothic Arch 7 pc water set	595

Paul Jankauer, 5 Court of Overlook Bluff, Northbrook IL 60062 PH 312-272-4440

P EI	Millersburg Nesting Swan radium finish	235
M EI	Grape & Lattice tankard pitcher	125
P EI	Lanated Flowers Tiffany finish 11" Bridges basket	140
M EI	Stag & Holly large ftd bowl	75
A EI	Stork & RUSHes mug	85
G EI	Grape & Cable water set	365
P EI	Tree-trunk funeral vase elephants foot base	245
M EI	Octagon decanter & stopper	95
P EI	Millersburg Swirled Hobnail rosebowl rare	225
G EI	Millersburg tri cornered Whirling Leaves bowl	155

\*\*\*\*\*

Edward Henderson, 1111 N College, Stuttgart, Ark PH 501-673-8757 aft 8PM

M EI	Peacock & Grape Berry Spray chip on base bowl	35
C EI	Persian Medallion 4 cracks bowl	15
LM EI	Ribbed 9"	35
M EI	Roccoca 5" bowl 4 sm chip on base	10
A EI	Stippled Ray 9 1/2 (N) bowl chip on bottom	35
G EI	Stippled Ray 8 1/2 bowl (N)	50
A EI	Twelve Point bowl 8"	40
M EI	Panthers & Bleeding Hearts inside Butterfly & Berry outside crack very minute	50
LM EI	Rose butterdish w/lid	40
M EI	Diamond compote chip on rim	8

\*\*\*\*\*

Naomi Calkins, 1014 Sedeeva St, Clearwater, Fl 33515 PH 813-447-2962

AO EI	Dandelion mug (N)	450
DM EI	Orangetree 7 pc berry set	220
DM EI	Milk glass Smooth Rays 8 1/2 inch bowl	125
M EI	Beaded Shell open sugar	40
DM EI	G/C sugar bottom inside rim nicks (N)	30
M EI	G/C (N) bon bon	30
DP EI	G/C Sweetmeat compote base (N)	95
M GI	Stork vase	20
DP EI	Welch paper wt	35

\*\*\*\*\*

Mary Kesterson, 3020 Mesa Rd, Willow Park, Tx 76086 PH 817-441-8410

PO EI	Caroline 3 side up bowl	50
W EI	Constellation compote	70
R EI	G/C bowl 8" Fenton	425
M EI	Lion bowl 8"	95
IB EI	Nippon bowl 9"	165
IG EI	Peacock plate (N)	235
P EI	Wishbone Tri-cornered plate ftd rare	195
AQ EI	Corinth Jack In Pulpit vase	50
R EI	Dragon & Lotus bowl	600
AO EI	Leaf & Beads rose bowl pastel	245

\*\*\*\*\*

Charles Perry, 8641 Lakeshore Dr, Southhaven, Ms 38671 PH 601-342-1694

B EI	Roundup 9" plate flat not ruffled	175
M EI	Stork & Rushes butterdish rare	125
M EI	Springtime butter top only	50
A EI	Millersburg Diamond 4 pc water set	285
G EI	Heart Band souvenir tumbler rare	135
A EI	Butterfly & Berry butter base only	30

\*\*\*\*\*

44

Louis Bradford, Rt 2, West Paducah, Ky 42086 PH 502-488-3005

R EI	Basketweave open edge Jack In Pulpit basket	150
R EI	Goblet 3 1/4 X 5"	150
R EI	Holly hat large turned up on two sides	200
R EI	Acorn 7" bowl	350
B EI	Orange Tree ftd 7 pc water set chip on feet	425
B EI	Orange Tree loving cup	175
M EI	Kittens ruffled bowl	120
M EI	Kittens cereal bowl	75
P EI	Ivy Town Pump	500

\*\*\*\*\*

Cliff Decker, RD 1 Box 209, Whitney Point, N Y 13862 PH 607-692-3762

B EI	Grape & Gothic Arches tumblers 3 40 ea all	110
A EI	Holly Whirl bowl radium 7"	50
W EI	Grapevine Lattice plate 7"	45
CL EI	Lustre Rose bowl 10 1/2	60
PM EI	Lustre Rose water set 5 pc	165
M EI	Vineyard tumbler peanut butter jar	20
M GI	Waterlily & Cattail tumbler	45

\*\*\*\*\*

Linda Wheeler, 916 Fountain Ave, Louisville, Ky 40222 PH 502-426-8684

M EI	Cherries Butter dish lid only interior flaw	31
M EI	Orange Tree 9" master berry sliver off ft	35
M EI	Imperial Grape decanter no stopper	30
M EI	English Geometric 7 1/2 bowl	35
A EI	Star of David bowl	60
B EI	Blueberry tumbler	65
M EI	G/C (N) tumblers 2 ea	30
LM EI	G/C (N) tumbler	25

\*\*\*\*\*

Mary Welch, 213 Alexander, Scotia, N Y 12302 PH 518-393-7748

M EI	Crackle spittoon	35
M EI	Beaded basket 2 handles	25
PO EI	Six Petals tri corner bowl	49
PO EI	Caroline Bowl accordian edge round 9"	52

45



M EI Millersburg Diamond tumblers 6 ea 33  
Send 2 stamps for long list 350 pieces

\*\*\*\*\*

Jack Wilson, 3926 N Keeler, Chicago, Il 60641 PH 312-282-9553

M GI U.S. Glass buttress water pitcher only known example 550  
A EI Scroll Embossed 8 sided plate 85  
M GI Flute pitcher rare suggest picture if interested 175  
B EI Hearts & Flowers compote sm chip on outside edge  
of base filled with epoxy 35

\*\*\*\*\*

Burney Mahn, 1001 Rock Rd, Desoto, Mo 63020 PH 314-586-6226

A EI N Sprintime 5" bowl 50  
P EI N Finerib berry set 6 pc 160  
M EI N Acom Burr berry set 6 pc 235  
A EI N Peacock at Fountain 6 pc 165  
M GI Fashion punch cup 2 ea 18  
B EI Stag & Holly 3 ftd bowl 175  
G EI April Shower vase 55  
M EI Panther berry bowl 55  
M EI Panther master berry bowl sm heat check on rim 45  
DM GI Sailboats wine 90

\*\*\*\*\*

Lee Bryant, RR 1, Decatur, Ind 46733 PH 219-639-3415

G EI Lustre Flute sugar bowl N 35  
M EI Golden Grapes rose bowl 40  
M GI Orange Tree creamer collar base 22.50  
A GI Grape & Cable powder jar bottom N 25  
DM EI Grape & Gothic Arches berry set 5 pc 90  
M GI Panther with B/B ext 5" ft folded sides bowl 27.50  
LM EI Grape & Gothic Arches 4 1/2 berry bowl 10

\*\*\*\*\*

Lucile Britt, 3048 Tamarak Dr, Manhattan, Ks 66502 PH 913-539-1933

M EI Hearts & Trees ftd bowl rare 150  
EB EI N G/C banana bowl super 275  
P EI Imperial Grape goblet 85  
EB EI N Peacock & Um sm ice cream dish 65  
M EI Tulip & Cane Imperial #9 goblet 95  
W GI Three Fruits bowl rare in this color 250  
P EI Blossom Time compote 100  
PB EI Nippon pie crust edge bowl 145  
M EI Floral & Grape varient tumblers 6 ea 15  
Have many choice tumblers call or write wants

\*\*\*\*\*

Dick Wetherbee, 847 Stafford St, Rochdale, Ma 01542 PH 617-892-4420 aft 6

M EI Wreath of Roses punch bowl no base 7 cups Vintage int 185  
B EI Grape Delight six ftd nut bowl 125  
PO EI Floral & Wheat/Puzzle int bon bon 95  
G EI Grape Wreath 8 1/2 bowl star in center Millersburg 115  
Teal EI Four Flowers Varient 8 1/4 bowl rare 150  
G EI Star of David & Bows 7 1/2 Dome ftd bowl 80  
P EI Dogwood Sprays 9" dome ftd bowl 85  
P EI Blackberry Wreath 10 1/2 master berry bowl Millersburg 115  
P EI Holly Swirl 9 3/4 bowl near cut Wreath Millersburg 95  
PO EI Swirl Rib 10" vase 35

\*\*\*\*\*

Jim McClure, 116 Mansfield St, Belvidere, N J 07823 PH 201-475-3077

A EI Peacock on Fence plate 175  
A EI Blackberry Bramble compote 22.50  
W EI Fanciful low bowl 10 ruffled candy ribbon edge 75  
P EI N Stippled Rays bowl pie crust edge 35  
A EI Holly bowl 40  
B EI Holly bowl ribbon candy edge 40  
A EI G/C bowl N 40  
P EI Oriental Poppy tumbler 45  
A EI Singing Birds tumbler N 40  
G EI Memphis punch cup N 25

\*\*\*\*\*

WANTS

Elmer Gregger, 12505 Renner Rd, Keymar, Md 21757

G Loving cup  
W Loving cup  
IG Ice creams small up to 5  
EB Ice creams small up to 6  
IB Paspberry tumblers up to 6  
IB Peacock at Fountain tumblers up to 3  
R Large Sunken Hollyhock lamp top  
G Panther small berry bowl with wavy sides

\*\*\*\*\*

Ernest Caudle, Rt 1 Box 87, State Rd, N C 28676 PH 919-874-2519

P Springtime tumblers  
M Oriental Poppy tumblers  
G Springtime tumblers  
W Springtime, Peacock at Ft, Singing Birds butterdish  
M Butterfly & Berry sugar & spooner  
Octagon large size pitcher any color  
Any good pastel or red colors

\*\*\*\*\*

Delouris Craft, 702 Bradley Dr, Bloomington, Il 61701 PH 309-662-3610

Any color Orange Tree ftd orange bowl  
M Peacock at Fountain ftd orange bowl (N)  
Any color Fenton Grape & Cable Persian Medallion int ftd orange bowl

\*\*\*\*\*

Carl Rodgers, 33237 CR 452, Brinkhaven, Oh 43006 PH 614-824-4106

G Millersburg Cherries powder jar bottom  
Millersburg Cherries butter dish top A  
A Millersburg Cherries sugar  
G Millersburg Cherries butter dish  
M G/C sugar bottom or complete  
Millersburg Swirl Hob spittoon any color  
G Bushel basekt (N)

48

M Millersburg Cherries butter bottom  
Millersburg Cherries sugar top

\*\*\*\*\*

Barbara Nelson, RFD 4, Box 155, Laconia, N H 03246 PH 603-293-7246

G Acanthus bowl or plate  
A Acanthus bowl or plate  
S Acanthus bowl or plate  
B Acanthus bowl or plate

\*\*\*\*\*

A C Dickey, 144 Chandler St, Vacaville, Ca 95688 PH 707-448-9386

R Vintage 8 1/2 bowl

\*\*\*\*\*

Paul Jankauer, 5 Court of Overlook Bluff, Northbrook, Il 60062 PH 312-272-4440

B Vintage epergne bottom small or will sell lily  
P Many Fruits punch set base

\*\*\*\*\*

Mary Kesterson, 3020 Mesa Rd, Willow Park, Tx 76086 PH 817-441-8410

W Persian Medallion rose bowl  
AO Beaded Cable rose bowl or any other color  
PC Fanciful bowl  
W Fine Cut & ROses rose bowl  
R Orange Tree bowl 9"  
W Hearts & Flowers compote or any other color  
AO Peacocks bowl  
IG Bushel basket round

\*\*\*\*\*

49

Cliff Decker, RD 1 Box 209, Whitney Point, N Y 13862 PH 607-692-3762

- A G/C pitcher (N)
- G Double Star tumbler
- Dark Embroidered Mums bowl
- Dark Fanciful bowl or plate

\*\*\*\*\*

Louis Bradford, Rt 2, West Paducah, Ky 42086 PH 502-488-3005

- G Multi Fruits & Flowers Millersburg tumbler
- P Beaded Shell water pitcher

\*\*\*\*\*

Lee Bryant, RR 1, Decatur, Ind 46733 PH 219-639-3415

- M Long Thumbprint sugar
- G Shell & Jewell creamer with lid

\*\*\*\*\*

Bumey Mahn, 1001 Rock Rd, Desoto, Mo 63020 PH 314-586-6226

- M N G/C lid for powder jar
- A N G/C standard pitcher

\*\*\*\*\*

Al Rettke, 14226 East 143rd Lane, Burnsville, Mn 55337 PH 612-432-7489

- G Singing Birds bottom butter dish
- G Springtime bottom butter dish
- M Singing Birds butter, sugar, spooner

\*\*\*\*\*

Jack Wilson, 3926 N Keeler, Chicago, IL 60641 PH 312-282-9553

- AO Punch cups any pattern
- IG Punch cups any pattern
- W Punch cups any pattern except Acorn Burrs
- M Lacy Dewdrops any pieces



This is a beautiful piece of glass and truly looks like a trophy. This loving cup is in custard glass, with marigold overlay, and is beautifully iridised. This year a limited supply is being made so please order as soon as possible.

PLEASE MAKE CHECKS PAYABLE TO H.O.A.C.G.A. AND SEND TO THE SECRETARY:

Diane Treff  
13646 Leavenworth Rd.  
Kansas City, Kansas 66109

WILL PICK UP:

1983 CUSTARD GLASS WITH  
MARIGOLD OVERLAY LOVING CUP(s)  
AT \$40.00 EACH.

PLEASE MAIL:

1983 CUSTARD GLASS WITH  
MARIGOLD OVERLAY LOVING CUP(s)  
AT \$40.00 EACH PLUS \$3.00  
POSTAGE FOR EACH LOVING CUP

PLEASE PRINT NAME AND ADDRESS

---



---



---

NOTICE

The convention is over for this year and what remains are memories and friendship. While these memories are fresh in your mind, I would like to hear from you on your likes and dislikes of the convention. Last year I received 6 or 7 replies out of approximately 350 attending members. This is your club take a few minutes and exercise your opinions as members.

Did you enjoy the convention? Why?

Do you think display windows are necessary?

Did you enjoy the programs?

What would you like to see changed or remain the same?

What is your opinion about the new procedure on judging room displays?

I have contacted the Holidome in Lawrence, Kansas about possibly having the convention there next year. They have approximately 70 poolside rooms all of which we could have. The cost of poolside would be \$42 to \$47 plus they have several large conference rooms for the banquet auction and other programs. This Holidome is 2 years old and they seem to be willing to make allowances in order to draw our convention there.

The only possible problem is that the only date open close to our regular convention date is Easter weekend. I would like to know if this date would prevent any members from attending. Please return this questionnaire promptly since much of next years convention will be based on it.

George McGrew Jr.  
President

Additional comments:

---

---

---

---