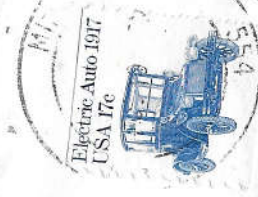
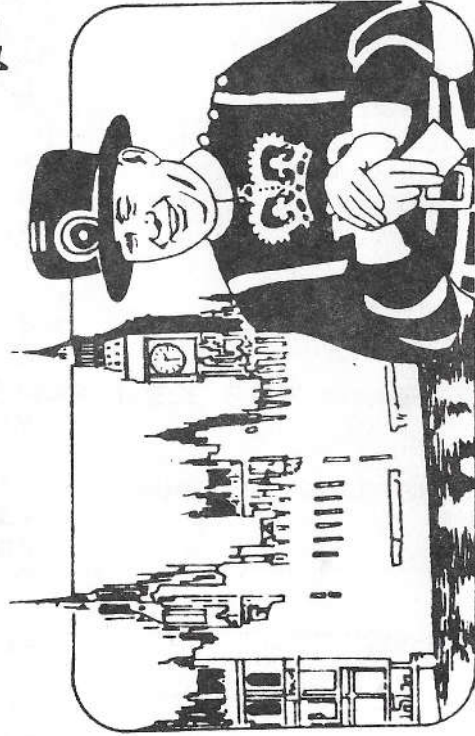


H.O.A.C.G.A
BULLETIN SECRETARY
AL RETTKE
14226 East 143rd Lane
Burnsville, MN 55337

FIRST CLASS



August 1983
S M T W T F S
1 2 3 4 5 6
7 8 9 10 11 12 13
14 15 16 17 18 19 20
21 22 23 24 25 26 27
28 29 30 31



INSIDE: A SPECIAL FOCUS ON

INTERNATIONAL CARNIVAL

By DON MOORE



Heart of America
Carnival Glass Association, INC.

MEMBERSHIP JUNE TO JUNE
\$20.00 PER COUPLE OR SINGLE

PUBLISHED THE 15TH
OF EACH MONTH

PRESIDENT

GEORGE D. MCGREW, JR.
6800 WOODWARD
OVERLAND PARK, KS 66204
913-262-8822

VICE-PRESIDENT

MICHAEL BASEY
4315 ADAMS
KANSAS CITY, KS 66103
913-432-2460

TREASURER

ELIZABETH BOLLES
5204 CATALINA
SHAWNEE MISSION, KS, 66205
913-432-5438

SECRETARY

DIANE TREFF
13646 LEAVENWORTH ROAD
KANSAS CITY, KS 66109
913-721-2917

BULLETIN SECRETARY

AL RETTKE
14226 EAST 143RD LANE
BURNSVILLE, MN 55337
612-432-7489

JULY MONTHLY MEETING

Following a delicious picnic meal, President McGrew called the monthly meeting of the HOACGA to order at 2:00 PM, July 24, 1983.

Secretary Diana Treff read the minutes of the last monthly meeting. The minutes were approved as read. With the absence of the Treasurer, Elizabeth Bolles, there was no Treasurers' report.

President McGrew announced that Mr. John Britt has accepted the position of Souvenir Chairman and appointed Mr. David Shikles and Mr. Cooley Miller as Co-Chairmen for the Convention.

With no further business, the meeting was adjourned. The next monthly meeting will be at the home of Robert and Josephine Katowitz, located at 5910 Woodside, Kansas City, MO. The meeting will begin at 2:00 PM, on August 28, 1983.

Diana Treff, Secretary

George McGrew Jr., President

FROM THE EDITOR:

I would like to take this spot to thank the following people who have spent so much of their time to share their knowledge, wit and observations of the "Carnival World" with all of us:

DONALD E. MOORE
JOHN & LUCILE BRITT
GRACE & BYRON RINEHART
BILL EDWARDS
RAY NOTLEY

The Bulletin would not be the quality publication we have become accustomed to without their contributions. For this we all must applaud their dedication.

Also deserving special mention is the fine job MICHAEL BASEY is doing as our very active Vice-President.

Again, thanks to all of you (and keep those articles coming).

Al Rettke, Bulletin Secretary

COMING EVENTS-----JULY PROGRAM

There was no program this month. This was our annual picnic. We had a good turn out for this event. Everyone seemed to have a good time. I hope to see you all at the August meeting. It was so hot that my baked beans were cooked by solar energy!!!!

COMING EVENTS FUTURE PROGRAMS

August	Marge Loftus	WHITE & CLEAR GLASS
September	ALL MEMBERS	ANNUAL SWAP & SHOP
October	Dennis Sutton	TORNADO VASES

ATTENTION: ALL MEMBERS

RECRUIT A NEW MEMBER

Remember, October is Carnival Glass Month. I would like to see everyone recruit a new member. Get out and set up a display somewhere. Let's all have a good time. When you have a new member or someone interested in Carnival Glass, PLEASE FEEL FREE TO BRING THEM TO THE MEETINGS. LET'S ALL KEEP OUR CLUB GROWING!!

I would also like to report that there still is some good glass out there. A couple of our club members have found some beautiful glass. Harold Fortney found a COBALT BLUE IRIS COMPOTE AND ALSO A COBALT BLUE OPALESCENT HOLLY BOWL. I have never seen either pieces before. Has anyone seen a Blue Iris Compote? This makes THREE BLUE OPALESCENT HOLLY BOWLS KNOWN. Also Glen & Jackie Fortney found a MARIGOLD LILY OF THE VALLEY TUMBLER. I would like to congratulate all of the Fortney's for their wonderful finds. So everyone keep looking because there IS glass out there.

If anyone ever has a find they would like everyone to know about, just let me know and I will report it for them.

MICHAEL J. BASEY, VICE-PRESIDENT

NOTE: ON 8-1-83 WE GOT CONFIRMATION OF A FOURTH B.O. CARNIVAL HOLLY BOWL IN MICHIGAN. EDITORS.

It was early July, just after The Bulletin went to the printer, that I heard of what may very well be the find of the past few years; PAUL JANKAUER, of Oak Brook, IL. has come up with the second known

AQUA OPALESCENT PEACOCK AT THE FOUNTAIN PUNCH SET

From all reports, it is a really beautiful set with 5 cups. Paul had it on display at the ICGA convention in St. Louis in late July and reportedly offered it to one collector for \$11,000.00. A set of this desirability will no doubt command such an amount (especially when one takes into consideration the only other bowl and base sold for a reported \$9400. years ago).

CONGRATULATIONS PAUL!!

Al Rettke

One of our Club members, Mr. Glen Fortney of Buckner Missouri was involved in a propane gas accident on July 9, 1983 in which he suffered some facial and eye burns. While these burns are fortunately not critical, they will take some time to heal and I'm sure we all wish him a most speedy recovery. Anyone wishing to send a card may do so to Mr. Glen Fortney, Post Office Box 303, Buckner, Missouri 64016.

Let me take a moment and offer some appreciation and thanks to our new Vice-President, Michael Basey. Mr. Basey has decided to make his office as Vice-President more active than it has been previously. He has instituted monthly programs at the business meetings, which I feel greatly enhances the meetings. Club business is fine, but with the advent of programs on Carnival Glass I feel this greatly enhances the meetings and SHOULD be a drawing card bringing many more members in our area to the monthly meetings. Let's face it.....Carnival Glass is what it's all about. So everybody please bring your favorite glass to the meetings and share it with others, and maybe even give a program in the future.

Please let Mike know how much you appreciate his efforts; he would really enjoy hearing from you.

HAROLD L. FORTNEY
KANSAS CITY, MO.

INTERNATIONAL CARNIVAL
BY DON MOORE

Until recently it was possible for we so called "experts" to label everything "English Carnival" when we couldn't identify the pattern. This is no longer an easy out as we now know that England was only one of a number of European Countries which produced a line of Carnival glass. Most of this new knowledge comes for the efforts of Ray Notley & Marion Quintin-Baxendale. These English researchers have each written a book which I highly recommend for the serious collector. They have established that many of the patterns we previously attributed to England were in fact made in Finland, Sweden, Czechoslovakia, Holland, etc. We have already known that Australia, Mexico & Argentina were also into Carnival. Generally speaking, the Carnival made by these other countries followed our Carnival heyday & remained popular well into the 1930's.

I should point out that this article is not intended as an in-depth study of European Carnival. In fact it should be labeled a once-over-lightly outline of the international aspect of our hobby. Carnival is not exclusively an American phenomenon. It has been produced, loved and collected by people all over the world and turns up in South Africa, Singapore, Zimbabwe and even in Russia.

One of the problems created by this new knowledge, is just how we should label this Carnival that was made outside the U.S. Any attempt to define Carnival is a sure way to invite a hassle. Lets try it anyway. I have usually characterized it as "pressed iridized pattern glass made in the United States between 1907 & 1928". This definition would rule out all Carnival made outside the U.S. Ray Notley has labeled U.S. Carnival as "Primary" and all other Carnival as "Secondary". This is one way of separating the U.S. production from other Carnival but my problem, Ray, is the implication that non-American Carnival is inferior in quality or desirability. I have trouble with this. My ROSE GARDEN pitcher that was made in Sweden and my Australian KIWI bowl, as well as many other foreign patterns, are equal or superior in quality to much of our American glass. Don't forget that our LUSTRE & CLEAR, COSMOS VARIANT, RUFFLED RIB, etc., are not great works of art. Regardless of how we choose to label this foreign product, it still must be considered as falling into the broad "Carnival" category.

Many purists feel the term "Carnival" should be reserved strictly for our American product. They would argue that this term has sprung from the historical background of our glass and is uniquely American. This approach has merit and I tend toward buying it. You must draw your own conclusions.

Since the battle lines are already drawn by these earlier comments, lets go all the way and examine some other portions of this Carnival definition. Some will quarrel with the term "pressed". To be sure, some Carnival is mold blown but a mold is nevertheless still used. Any free form, iridized glass that is blown without benefit of a mold, is art glass and not Carnival in my opinion.

Perhaps the most troublesome part of the definition is the term "pattern" glass. This strikes at the heart of the old problem of whether "Stretch" glass is also Carnival. Since most Stretch is non-patterened, this definition removes it from the Carnival category. I can live with this. It has always been confusing to me to consider Stretch as simply a part of the Carnival scene. Even the manufacturing process is different which makes it still easier to treat Stretch glass as falling into a separate category. By doing this we immediately run into those patterned pieces that are also stretchie. I have no reluctance or problem in throwing these pieces into the Carnival category. If a piece is patterned it is Carnival whether or not it is stretchie.

And now for the area that is perhaps the toughest of all. We have usually put a time period in the definition such as "made between 1907 & 1928". The purpose of this is to eliminate "late" ("depression") Carnival that was made in the late 1930's and "new" ("reproduced") Carnival that has been made from 1965 to date. The problem with this is that it also eliminates much of the Australian and European Carnival. Their Carnival production started around 1923 and ran until about 1939. This poses a dilemma as our own "late" or "depression" Carnival was made during this same period.

These comments outline the problems we face when we attempt to define Carnival. There is room for wide difference of opinion. For my money, I would go with the strict old definition and define it as "pressed iridized pattern glass made in the United States between 1907 & 1928". This excludes Stretch and all blown iridized glass and of course "late" and "new" Carnival. It also excludes all foreign glass. This poses no real problem, in my opinion, for while it wouldn't qualify as "carnival", it can and should be refered to as English Carnival, Australian Carnival, Swedish Carnival, etc.

All I set out to do in the first place, was to outline the complexity of the subject of non-American Carnival and show some examples. So here are a few pictures and a brief discussion of the pattern and country of origin.

ENGLISH CARNIVAL

Most of the English Carnival was made by the Sowerby's Ellison Glassworks at Gateshead, England. They produced English Carnival from 1926 to 1930. The peacock head trademark was used on some but not all of their production.

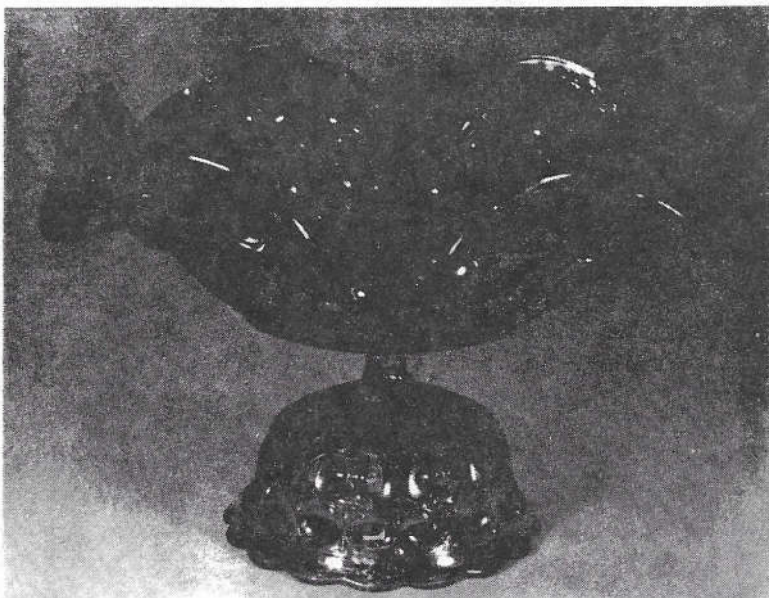


PHOTO #1 MOONPRINT

The MOONPRINT two piece fruit bowl shown in Photo #1 is a confirmed Sowerby product. This is the only such set I have seen but the base is often encountered as a compote. It has not as yet been confirmed that the HOBSTAR PANELS breakfast size sugar & creamer shown in photo #2 was made in England. All indications, however, point in that direction.

This is the only complete set I have seen. Some of the other confirmed English patterns are LEA, DIVING DOLPHINS, PINAPPLE, COVERED SWAN, COVERED HEN, THISTLE & THORN, HEADDRESS, etc. Like most non-American Carnival, these pieces are usually found in marigold, purple or blue. Pastels, red and opalescent pieces are non-existent. I don't even recall seeing any green.

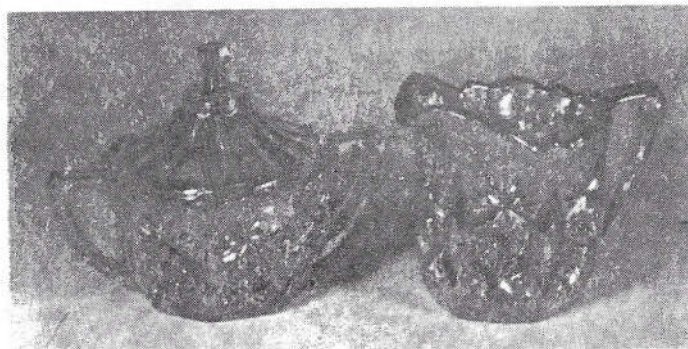


PHOTO #2 HOBSTAR PANELS

FINLAND CARNIVAL



PHOTO #3 PANELED THISTLE

Most of us were surprised to find Finland made some of the patterns we had always attributed to England. The PANELED THISTLE pitcher and tumbler shown in photo #3 in blue is one of two pitchers and some 8 or 10 tumblers that have turned up to date. The pattern name has been about as confusing as the maker of this set. The PANELED THISTLE name conflicts with a quite different pressed glass pattern made by Higbee. This Finnish set has also been called LATE PANELED THISTLE and in her book Marion Quintin-Baxendale calls it ALEXANDER FLORAL. To thoroughly confuse the issue, some feel the flora on this pattern isn't even a thistle. It is a rare set regardless of what we call it. The rare WESTERN THISTLE tumbler is also a product of Finland along with many other quality patterns that are not familiar American Carnival community. The Finnish Carnival was not made until about 1930. Research indicates it may have been made at four different factories. It also appears that the factory at Riihimaki copied several American Carnival glass patterns including LUSTRE ROSE, TIGER LILY,

DRAPERY VARIENT AND FOUR FLOWERS. None of these have surfaced in the U.S. to my knowledge but they are pictured in some of the old Finnish catalogs.

AUSTRALIAN CARNIVAL

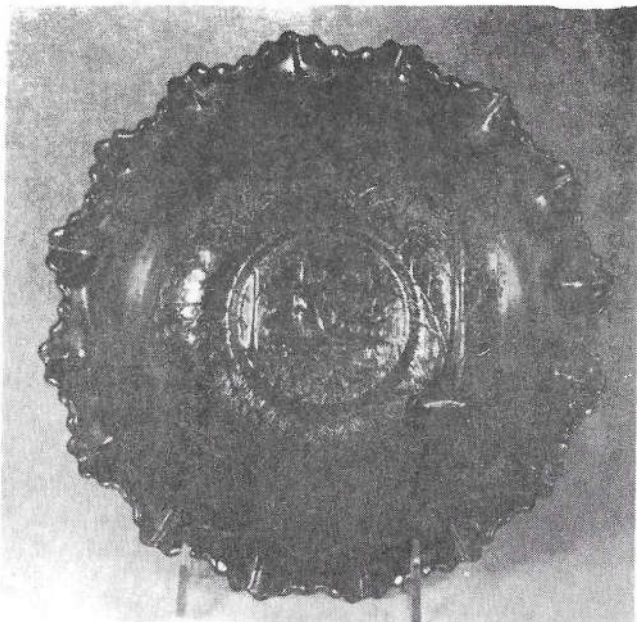


PHOTO #4 KANGAROO

Most collectors are familiar with Australian Carnival. It was exported heavily to the U.S. just as our Carnival was exported to Australia. Like most Australian patterns, the purple KANGAROO bowl shown in photo #4 depicts animals, birds and flowers that are indigenous to that country. Other well known patterns are KOOKABURRA, EMU, KINGFISHER, SWAN, MAGPIE, SHRIKE, etc. It appears that all Australian Carnival was made by the Crystal Glass Co. of Sydney commencing about 1922. Except for a piece or two in aqua, marigold and a deep purple were the colors used.

ARGENTINA CARNIVAL

We don't normally associate Carnival with South America. It was a surprise when this BEETLE ash tray turned up several years ago. Two of them are now known. Both are blue. Wily Adis did the research on this and found they were produced by the Regolleau Cristalerias Co. in Buenos Aires, Argentina.

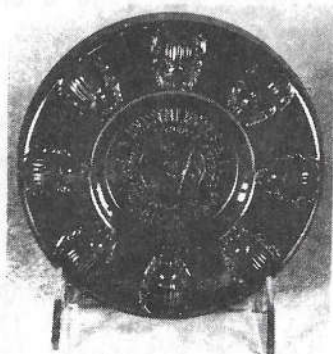


PHOTO #5 BEETLE ASH TRAY

It was made as a souvenir piece for special customers in 1925 and continued on a limited basis until 1945. There is no indication they made any other Carnival but it would not be surprising if other items were produced by this Company. They were still in business, at last report, with a line of industrial glassware.

SWEDISH CARNIVAL



PHOTO #6 ROSE GARDEN

The Eda Glassworks in the Varmland region of Sweden was a big producer of Carnival, starting in about 1925. In one of their 1929 catalogs, twenty seven pieces of Carnival was pictured. It appears that production continued until about 1931. Blue and marigold were the colors made. The glass made by this company is of top quality. The rare ROSE GARDEN juice pitcher shown in Photo #6 is a beautiful example of their work. Only two of the pitchers have been found in the United States. One is marigold and the other is blue. This pattern was also made in a bowl and a vase.

The other Swedish pattern most familiar to American collectors is the CURVED STAR. For many years this was thought to be an English pattern. Photo #7 shows a rare rose bowl in blue. This piece could possibly be an open sugar as a similar shape is shown as an open sugar in Marion Quintin-Baxendales' book. This CURVED STAR pattern was made in a chalice, vase, epergne, berry set, compote, creamer, two-piece fruit bowl and even a childs 3 1/2" cereal bowl. This Company also made the SUNK DAISY small footed bowl and the SUNFLOWER & DIAMONDS vase which was long thought to be a Jenkins product.



PHOTO #7 CURVED STAR

CZECHOSLOVAKIA CARNIVAL

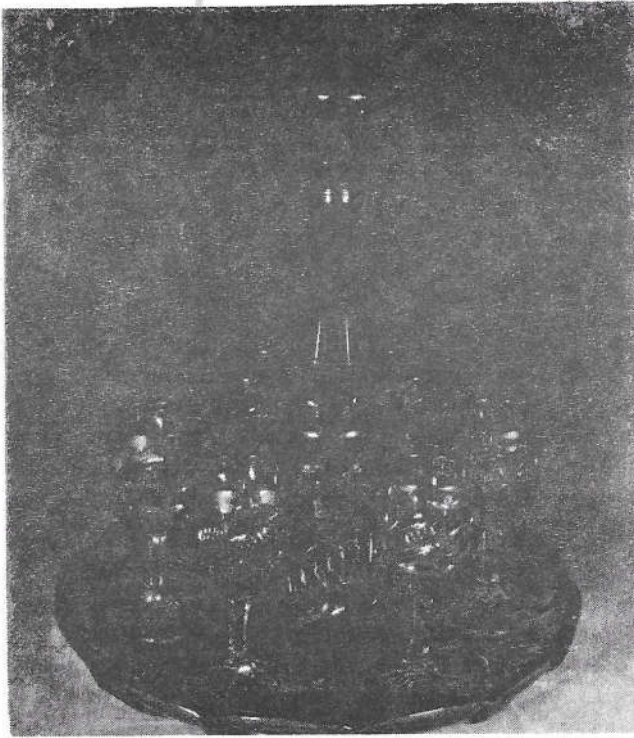


PHOTO #8 ZIPPER STITCH CORDIAL SET

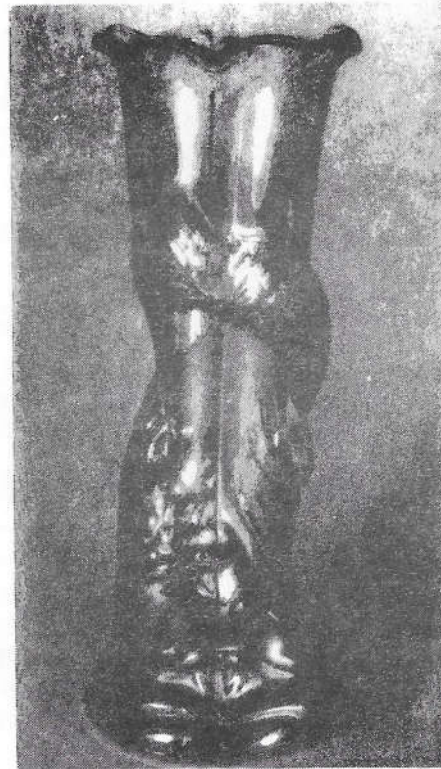


PHOTO #9 FISH VASE

I may be premature in showing these pieces here as it has not yet been confirmed that they were actually made in Czechoslovakia. Ray Notley however is convinced that they were and hopes to have more definite proof shortly. The ZIPPER STITCH cordial set, shown in Photo #8 has been a mystery for sometime. Like one version of the HAND vase, it is signed with the letters J.A.I.N. Ray has little doubt that he will be able to trace this to Czechoslovakia. It has sometimes been called a DOLPHIN vase but I feel they are being very kind. It looks more like a carp to me. Only 3 or 4 of these are known. All are marigold.



PHOTO #10
CLASSIC ARTS/EGYPTIAN QUEEN

The tall vase in Photo #10 is an unlisted size. Two of these are known. The figures are the same as those shown on the CLASSIC ARTS rose bowl in the front of the photo. The vase on the right was named EGYPTIAN QUEEN. The figures are different but it is obvious that all three of these pieces were made by the same Company. It was always assumed they were English but all would now point toward Czechoslovakia.

In conclusion it should be mentioned that Holland, Belgium, France, and Mexico produced a limited amount of iridized glass. Most collectors are familiar with the VOTIVE light, the OKLAHOMA tumbler and one version of the RANGER tumbler that were all made by Cristales de Mexico, a glass house in Nuevo Leon, Mexico. They carry a logo of the letter "M" inside the letter "C".

This article has gotten more lengthy and a little "heavier" than I intended. I hope it has served some useful purpose and that I haven't bored you to death in the meantime.

DON MOORE

EDUCATIONAL TUMBLER SERIES
by JOHN & LUCILE BRITT



ROBIN - AN OLD IMPERIAL PATTERN

The "Robin" tumbler in marigold, while certainly not considered as rare, is not easy to find when compared to other Imperial tumblers such as Octagon, Fashion and Imperial Grape. The "Robin" water set was reproduced by Imperial but not in marigold. It has always been considered by collectors and authors alike, that the old "Robin" tumblers were made only in marigold. Just recently, however, an old smokey tumbler was found which proves that the old tumblers were produced in the smoke color. No doubt they were made in a very limited quantity in this color, and this is the only one that has ever been reported. This smoke tumbler is in a good deep smoke color that covers its entire surface. The "Robin" pattern was also used by Imperial in a line of carnival glass mugs. These "Robin" mugs must have been a very successful item as many of them were produced and sold in marigold. Like the tumblers, the mugs have also been found in a good smokey color that goes all the way to the top. Some "Robin" mugs have a smokey green base color with the marigold overlay. These are scarce, but not nearly as hard to find as the completely covered smokey mugs. I have seen only two or three of these "Robin" mugs in smoke where the smoke color covers the entire piece.

Getting back to the "Robin" tumblers, they stand 4 1/2 inches high and the base is 2 3/8 inches in diameter. Like many other Imperial tumblers it has a collar base. The base has an eighteen point star that is pressed into its underside. You can mark the "Robin" tumbler in smoke as extremely rare. While not rare in the marigold color, they are quite attractive and would add beauty to any tumbler collection.

This "Robin" tumbler, which was made by the Imperial Glass Corp., marks our 67th edition in this series. Next month we will feature another tumbler from the long list of beautiful patterns that were made in carnival glass.



M670 1/2 Gallon Pitcher

=====

GET WELL GEORGE

=====

George Loescher had surgery in the beginning of July and is now home recuperating nicely. We're sure he'll be back to his "old self" soon and would like to hear from fellow collectors (especially those with rare carnival for sale).

DOWN ALONG THE RIVER

It was a beautiful Saturday morning, with the sun shining, soft morning breezes, the birds singing, squirrels playing tag in the backyard, and the coffee was deliciously tasteful. The wife said---"This is too nice a day to work inside, what do you say we take a ride down along the river and see if anything turns up." As many of us know, any excuse is a valid excuse to take time off to look for Carnival Glass.

Off we went, visiting pickers and antique shops along the way. At last we came to the river and stopped at a familiar and favorite antique shop. This particular owner knows his old Carnival Glass and is not afraid to acquire it for resale. After visiting with him, discussing Carnival Glass and his recollections of Carnival collectors who had standing orders with him for any pattern and color of Carnival Glass watersets, we looked over his china closet of Carnival Glass, but didn't find anything of interest.

The wife then asked about old paperweights--she also collects them and wanted to know if he had any. He showed her a couple of not-too-current vintage and then said "I've got something over here in Carnival Glass that could be used for a paperweight", and then went on to explain. He said that every Saturday morning several pre-school boys combed the city dump for items they thought he might be interested in, to sell for spending money for the movies, etc., and showed an old kerosene can they had brought in that morning. He indicated he always bought what they brought in even if it wasn't worth anything. He said he felt it was teaching them the art of earning their own way and that it really meant a lot to the kids. Anyway, he showed us this Carnival paperweight that he had bought from them several weeks before. He said he gave them two dollars for it. It was rectangular in shape, approximately 4 X 2 1/2" in size and was marked with the old IM-PE-RI-AL cross and amethyst in color. It had a fairly good sized chip off one corner, from the base to the top. He said that since we collected Carnival Glass and paperweights, we might be interested in it and could have it for three dollars and twenty-five cents. The wife looked at it and noticed the chip (she has an aversion to anything that is chipped) and handed it back and said -- "I guess not."

To make a long story short, we then went to our first Carnival Glass convention that summer (this occurred a few years ago) and guess what, they are all chipped; evidently as they came out of the mold or they were prone to being chipped on the base through use and handling.

Needless to say, we made another trip to the river, but it was too late, the paperweight was gone. We made the mistake of many novices and soon after ordered the complete set of Mrs. Hartung's books. So you younger members and beginning collectors, have heart, there is plenty of good Carnival Glass yet to be found and we wish you good luck in your search for that fortunate find.

Kay & Bob Geisinger
Canfield, OH.

TO THE HOACGA OFFICERS:

I take my hat off to you for the fantastic job and amount of voluntary work you do to make such an organization run.

We, the rest of the members, should be (and most are) thankful to them. This work through the year goes unrecognized until the convention, then we get to reap the benefit of it all.

Thank you all, past and present,

KEN OSBON
Gresham, OR

YOU KNOW WHO YOU ARE:

Would the person who has given me the hatpins to be repaired that were damaged in the mail please contact me as I have lost your name and address.

Christ E. Harnish
Box 304-R3
Willow Street, PA, 17584

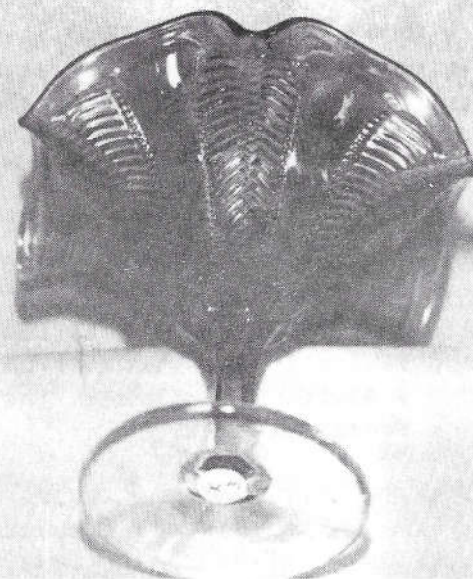
Carnival Cameos

BY DONALD MOORE



FLEUR DE LYS (MILLERSBURG) - This pattern is seen on both a collar base and a dome footed bowl. It has also been found in a rare rose bowl shape. The amethyst collar base bowl pictured here is a bit unusual, as it is an ice cream bowl shape, whereas it is more often ruffled. This 10" bowl can be found in green, marigold and amethyst. It is not rare but is most beautiful and desirable. The dome footed bowl will bring a few dollars more than the one on a collar base. In general, they will sell in the \$125 to \$200 price range.

BY JOHN & LUCILE BRITT



HERRINGBONE & BEADED OVAL

This little compote is the only one of these that we have ever seen. It is called "Herringbone and Beaded Oval" and the pattern is listed in Presznik Book 4, plate 99. Old Imperial catalog material lists it as Imperial's No. B-54 1/2. This pattern is shown in that catalog on various types of lamp shades.

The compote pictured above is a rich shade of marigold and quite an unusual and pretty piece of glass. We picked this up several years ago in an antique show. The picture was taken with the compote laying down. The pattern is on the outside of the compote. We have seen crystal goblets in this pattern but none in Carnival Glass. This compote is now in the collection of Roland Kuhn and Donald Kime.

The American Carnival Glass Association met at Camp Hill, PA on July 7-9 for their annual convention. Over 300 were registered and it seemed one of the largest gatherings so far. The weather was nearly perfect, not unbearably hot as it was before and after.

The Keystone Club had everything planned ahead and must have worked for months getting ready. Their hospitality room was always full of delicious cookies, punch and coffee, a wonderful place to meet friends and catch up on the years happenings. No words can quite express the appreciation all of us feel we owe everyone who made our stay so very nice.

The auction conducted by Tom Burns and Bill Richards was no less than great. The room was so full some were turned away, even standing room was scarce. We know of 175 bidding numbers, which must be a convention record. Highest item was an UNUSUAL GRAPE & CABLE MASTER punch set with the sides straight up (not fluted), it brought \$1700. Another big seller was an AD SINGING BIRDS MUG @\$1050. All in all, the prices held up quite well--owners and auctioneers seemed pleased.

The banquet was exceptionally nice and the square dancing afterward was toe-tapping good. Mr. Frank Fenton was appropriately dressed in western attire and was easy to watch as he glided effortlessly over the floor. He had our talented Editor Alma Maganau as his partner and she is no novice in the dance world.

Frank Fenton spoke to the group on Friday and held us spellbound as he recounted the early days of the Fenton Art Glass Company. He is a most able speaker and we gained much from his talk.

Members from different states stood up to be recognized--also the Carnival Clubs from all over. Collectors stood up from 25 years experience on down, it's easy to see the growth the years have brought.

A memorial was read on the members who have passed on through the year and a sadness fell over the crowd as each was remembered. Now we hear Bill Carroll has passed away since then, so the new year begins taking it's toll.

The whole convention was good, we did hear a few complaints about rooms too far away, but the motel really tried to keep us all as close together as possible. They seemed to cooperate better than some we have had in past years. We appreciated all they did.

The displays were outstanding this year, and numbered 39, I believe. The Harnishs' won first with a farm scene so realistic it had a pond, covered bridge, etc. The Henry Hawks' had a display of rare Cherry pattern carnival and a cherry tree with real cherries, also strawberry and grape pieces with appropriate fruits--it was no wonder they took second. The third place display was lovely rosebowl nestled on angels hair with small bulbs shining through, the Gallos' thought up that winner. The Perrys' of Illinois always have a winner and they came up with a fabulous display of peach opal for fourth place. We gave out four "runners up" awards as encouragement for those who came so near. They went to the Jenks', Booths', Kerns' and Shinesthul--all so deserving! We wish everyone could win but they all do get the lovely appreciation awards which are nice, too.

We heard of good sales in the rooms and hope everyone was satisfied. There was a lot of responsibility for the officers and the board but everyone cooperated just beautifully, so who could ask for more? It seemed a nice convention to us, someone asked if we had a good time and we decided we surely did, as tired as we were after getting home. We wonder if we can restore enough energy to even think of ICGA in St. Louis. These are busy days, also the hottest and driest we can remember.

*** GET WELL WISHES TO BERNICE ALLEN ***

We've learned of Bernice Allen's illness and must say she was sorely missed at the convention. She has always been helpful with pictures and write-ups through the years. She was planning another trip to Australia when illness intervened. We hope she will recover and be with us again, all of us send loads of get-well wishes. Cards would be much appreciated, her address is: Bernice Allen, 3316 Boston St., Hopewell, VA, 23860.

GRACE & BYRON RINEHART
Charleston, WV

WELCOME TO NEW MEMBERS

PERRY HAGER, Bonne Terre, MO
JAMES & BARBARA BARKER, San Diego, CA
STEVE & JETTA CHAMBERS, San Jose, CA
M/M HOWARD ROBINSON, Great Barington, MA



OLD CARNIVAL GLASS LIBRARY

CARNIVAL GLASS RARITIES-A color line approach. Lists the top 10 rarities in each color-plus complete rarities price guide-40 pages of black and white pictures-special section on whimsys-\$8.50 pp. Also THE SHAPE OF THINGS IN CARNIVAL GLASS, 110 pages, 200 items in full color-\$9.95. Don Moore, 2101 Shoreline Drive, Apt 462, Alameda, CA. 94501.

CARNIVAL GLASS SERIES-by Marion T. Hartung. Each book has 100 different patterns-10 books in the series, books 1,2 and 3-\$3.00 ea, books 4 thru 10-\$3.50 ea. 1981-82 price guide-\$5.00 pp, Northwood Pattern Glass-clear, colored, custard and caranival-\$9.95, plus .50 postage. Ione Henshaw, 903 East 6th Ave., Emporia, KS 66801.

CARNIVAL IN LIGHTS-A full color book on Carnival Lighting, including Gone With The Wind Lamps, Candle Lamps and shades-price guide included-\$11.95 plus postage, Helen Greguire, 103 Trimer Road, Hilton, NY. 14468.

CARNIVAL GLASS TUMBLERS-Author Richard Owens-order from Don Brown, Wallace-Homestead Book Company, 1912 Grand Ave., Des Moines, IA. 50303.

IMPERIAL CARNIVAL GLASS-THE EARLY YEARS-\$9.95, FENTON CARNIVAL GLASS-THE EARLY YEARS-\$9.95, Price guide 1981-82 edition-\$3.95-MILLERSBURG THE QUEEN OF CARNIVAL GLASS-\$8.95, THE STANDARD ENCY. OF CARNIVAL GLASS-650 different full color patterns photographed, 223 page hardbound illustrates and evaluates Dugan, Fenton, Imperial, Millersburg, Northwood, Minor American, English Carnival, and more-\$24.95, NORTHWOOD, KING OF CARNIVAL GLASS-\$9.95, Bill Edwards Author, Collectors Books, Paducah, KY.

CARNIVAL GLASS PRICE GUIDE-Sherman Hand & Charlotte Williams-\$5.95 pp. Order from: Sherman Hand, 127 Olympic Circle, Vacaville, CA. 95240, or Charlotte Williams, 630 N. Lower Sacramento Rd., Lodi, CA. 95240.

CARNIVAL GLASS WORLDWIDE--by M. Quinton-Baxandale Obtainable from CARNIVALIA PUBLICATION, PO Box 1, LOSTWITHIEL, CORNWALL, UK Cost £8.75 surface mail or £10.25p STERLING, air mail. ISBN : 0 9508601 0 7. Payment from abroad by International money or Postal Orders. Trade terms on application.

FENTON GLASS-THE FIRST 25 YEARS-144 pages, 72 in full color, more than 400 items pictured in Fenton's carnival and iridescent "stretch" colors, rare catalogue reprints (some in color), a complete history of the factory's early years, from 1907 to 1932, \$15.95 for softcover edition with price guide, \$20.00 for limited edition hardbounds. Order from the author, William Heacock, P.O. Box 27037, Columbus, OH. 43227.

Angela Hallam's 52 page fully illustrated paperback-first book to tell about the English-made Carnival-\$3.35 surface postage, air mailed \$4.35 Order from Wise Books, 82 Chart Lane, Reigate, England, RH2 7EA.

1983 Edition--CARNIVAL GLASS AUCTION PRICE REPORT. A list of over 4600 sale prices of Carnival, 2300 from 1982 auctions. Patterns are alphabetical by Hartung name. Information includes description, shape, color, sale price, date, auctioneers and sellers names, and a separate section for advertising and souvenirs. Single copy price is \$8.00, postpaid. Al & Wendy Rettke, 14226 East 143rd Lane, Burnsville, MN. 55337.

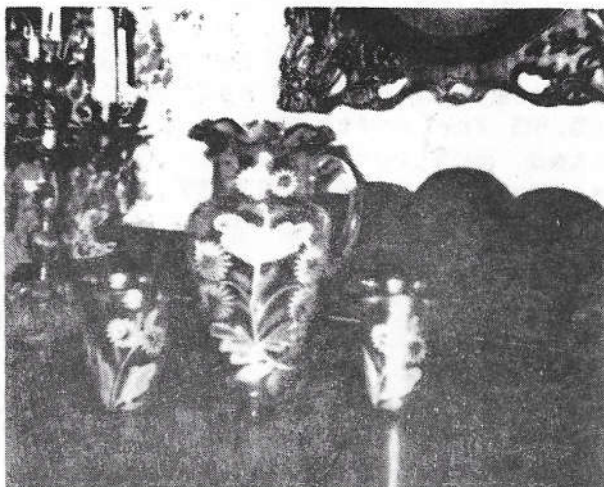
CARNIVAL GLASS--by Ray Notley, Shires Album # 104. ISBN 0 85263 637. Price is only \$3.55 including postage. Send to 7 Hills Books, 519 W. 3rd. Street, Cincinnati, OH. 45202.

OTHER REFERENCE MATERIAL

Presznick's "Encyclopedia of New Carnival and Iridescent Glass". A great reference book with color plates galore and prices, \$19.95. Reichel's "Modern Carnival Glass", 100 illustrated pages of Carnival made since the 1960's. Volume 1, \$4.00, Volume 2, \$4.95, Price Guide for both volumes \$2.50. Add \$2.00 for shipping and insurance. Theodore A. Parent, Box 596, RD 1, Canfield, OH, 44406.

"Encore by Dorothy" books 1 and 2. A series of books on new reproduced Carnival Glass, giving information on the patterns and colors that are being reproduced. A invaluable asset to the old carnival collector, possibly saving him many dollars by knowing what has been reproduced. Price for each book is \$7.70 postpaid. Be sure to state which book you want. Dorothy Taylor, Box 11734, Kansas City, MO, 64138.

HELP WANTED



Would someone please identify this Marigold enameled lemonade set????

The ruffled top pitcher is 10 1/2" tall and decorated with white flowers and stems and green leaves with white shading. The flowers (which are shaped like Daisies) have red centers, making this a very colorful and attractive set.

I was so happy the day I found this set in the Henderson, KY area, I hardly noticed the 100+ degree temperature!!!

MARY HERREN
520 South Berry
Morganfield, KY 42437

EDITORS NOTE:

I invite anyone having difficulty identifying an unusual piece of glass to send a photo and description to the Bulletin and we will publish it.

I'm sure some of our experts will contact the owner or they may contact me and I will publish the answer.

P.S.: The above reproduced photo does not do this beautiful set justice.

*** CARNIVAL CALENDER ***

AUGUST 11-12-13

PACIFIC NORTHWEST CARNIVAL GLASS ASSOCIATION

Convention & Auction, Holiday Inn, Eugene, OR.

AUGUST 19-20

AUCTION of the JAMES MELLO COLLECTION

Conducted by Burns Auction Service at the Holiday Inn-Crowne Plaza, Burlingame, CA. Rarities including IG Peacock at the Fountain punch set, IG Raspberry water pitcher, many other water pitchers and good pieces.

SEPTEMBER 3-4

AUCTION of the C.B. CARROLL COLLECTION

Nearly 3000 pieces makes this the second largest Carnival Glass auction ever held. Many rarities. Harley Motor Inn, St. Louis, MO., for reservations call 314-291-6800. For brochure contact Woody Auction Company, Douglass, KS. 67039.

OCTOBER 1

AUCTION of the MARION HARTUNG COLLECTION

Rarities including Aqua Opal Acorn Burrs punch set. Sale will be held in the Fairgrounds building, Emporia, KS. Contact Woody Auction Company for brochure.

OCTOBER 7-8

AIR CAPITOL CARNIVAL GLASS CLUB "MINI-CONVENTION"

Sheraton Airport Inn, I-235 & US 54 West, Wichita, KS. 67209

PERSONALS

C.B. "BILL" CARROLL passed away on Sunday, July 10, 1983. He leaves a multitude of friends in the Carnival Glass world. It was Bill's wish to have his collection dispersed among his collector-friends and the auction will be held as stated above.

Member FRED L. ISHMAEL, SR. passed away June 9, 1983. He leaves his wife Bernice and fellow Carnival collectors.

MARIE DARNELL has had surgery. All members wish her a speedy recovery.

POLICY FOR ADVERTISING IN THE H.O.A.C.G.A. BULLETIN

1. ALL ADVERTISEMENTS, ANNOUNCEMENTS, LETTERS OR ANY OTHER ITEM TO BE PRINTED MUST BE RECEIVED BY THE BULLETIN SECRETARY BY THE 1ST OF THE MONTH TO INSURE BEING PUBLISHED IN THAT MONTHS BULLETIN.
2. MEMBER FAMILIES MAY ADVERTISE 10 FOR SALE AND 10 WANT ADS PER MONTH.
3. ONLY OLD CARNIVAL GLASS ITEMS OR H.O.A.C.G.A. SOUVENIRS WILL BE PUBLISHED.
4. DAMAGE OR MANUFACTURING FLAWS SHOULD BE NOTED.
5. ALL FOR SALE ITEMS MUST BE PRICED, NO BID ITEMS WILL BE PUBLISHED.
6. A 5 DAY RETURN PRIVILEGE AT BUYERS EXPENSE PROVIDING IT IS NOT AS ADVERTISED.
7. ALL POSTAGE AND INSURANCE IS EXTRA, TO BE PAID BY BUYER.
8. ALL ADS MUST BE LEGIBLE, OR THEY WILL NOT BE PRINTED.
9. THE H.O.A.C.G.A. DOES NOT ACCEPT RESPONSIBILITY FOR THE ACCURACY OF ANY ADS.

FOR ACCURACY OF DESCRIPTION, THE FOLLOWING COLOR KEY IS RECOMMENDED:

A--AMETHYST	G--GREEN	P--PURPLE
AMB--AMBER	HA--HONEY AMBER	PRL--PEARL-PASTEL ON MILK GLASS
AO--AQUA OPALESCENT	IB--ICE BLUE	PM--PASTEL MARIGOLD
AQUA--LIGHT BLUE-GREEN	IG--ICE GREEN	PO--PEACH OPALESCENT
B--BLUE	IGD--ICE GREEN OPALESCENT	R--RED
BO--BLUE OPAL OR BLUE OPAQUE	LAV--LAVENDER	RA--AMBERINA
CLM--CLAMBROTH	M--MARIGOLD	SM--SMOKEY
EB--ELECTRIC BLUE	MMG--MARIGOLD ON MILK GLASS	VAS--VASELINE

NOTE: IF YOU WISH TO DESCRIBE A PIECE AS LIGHT OR DARK, USE THE BODY OF THE AD.

PLEASE USE THE FOLLOWING:

EI--EXCELLENT IRIDESCENCE GI--GOOD (AVERAGE) IRIDESCENCE LI--LIGHT IRIDESCENCE

EXAMPLES:	AO EI GOOD LUCK PLATE, ONE POINT BROKEN & REPAIRED	375.
	M LI PEACOCK AT THE FOUNTAIN 7PC WATER SET, PITCHER HAS FLAKE	225.
	MMG GI PEACOCK & GRAPE BOWL	360.
	A GI WISHBONE TUMBLER, HEAT CHECK, LIGHT AMETHYST	47.50

IT WOULD BE GREATLY APPRECIATED BY EVERYONE IF YOU WOULD USE THESE CODES AS SUGGESTED.

FOR SALE

BURNEY TALLEY, 1814 SLATE N.W., ALBUQUERQUE, NM, 87104
phone evenings: 505-242-1261

P	EI IMPERIAL GRAPE ruffled bowl, 7 1/2 to 8 3/4", a beauty	50.
P	EI LUSTRE ROSE 7 1/2" footed bowl, not fluted, tips repaired	40.
M	EI ORANGE TREE mini compote (from wine)	25.
M	EI FOUR-74 water goblet, rare	125.
G	EI MILLERSBURG COSMOS small unruffled bowl-radium	45.
SM	EI STAR MEDALLIAN milk pitcher	45.
M	EI LITTLE FLOWERS 5 3/4" sauce	28.50
M	EI STIPPLED RAYS 7" flat plate	30.
B	EI STIPPLED RAYS 7" flat plate	40.
M	EI FIELDFLOWER tumbler, chip on base polished	15.

ALAINE M. PENNETTI, 23 NANCY LANE, FT. MEYERS BEACH, FL, 33931
phone: 813-463-3918

M	EI OCTAGON 7 piece waterset, dark color	225.
B	EI CAPTIVE ROSE plate, cobalt	165.
G	EI ACORN BURRS punch cup, N	35.
M	EI STREAM OF HEARTS compote, a beauty	55.
P	EI GRAPE & CABLE stemmed ice cream, N	65.
M	EI IMPERIAL GRAPE decanter, stopper damaged	65.
M	EI IMPERIAL GRAPE wines, have two, each	15.
P	EI BUTTERFLY & TOP OF MORNING hatpins, each	27.50
M	EI IMPERIAL GRAPE 12" punch bowl	55.
B	EI FLORAL & GRAPE tumbler, chip on grape	17.50

TED SHEIBLEY, 304A HILLCREST DRIVE, NEW CUMBERLAND, PA, 17070
phone: 717-938-6417

P	EI PEACOCK AT THE FOUNTAIN 7 piece waterset	550.
B	EI WREATHED CHERRY small oval bowls, one has chip, all THREE	75.
PO	EI WREATHED CHERRY small oval bowls, one has chip, all THREE	165.
A	EI FLUFFY PEACOCK 7 piece waterset	900.
P	EI TOWN PUMP	500.

DICK HATSCHER, BOX 261 WALNUT HILL ROAD, BETHEL, CN, 06801
phone: 203-743-1468

PO	EI HEAVY GRAPE 10 3/4" bowl, COMPASS back, VERY RARE, dark	575.
M	EI LITTLE BARREL, no cork, dark M	65.
M	EI CORN VASE, dark M	450.
M	EI KITTENS banana shape dish, dark M	75.
P	EI GRAPE & CABLE master punch base	125.
G	EI INVERTED STRAWBERRY cuspidor	495.
G	GI OCTAGON compote, rare	85.
SM	EI SODA GOLD tumblers, have 3, each	35.
W	EI WREATHED CHERRY large oval bowl	165.
W	EI DAHLIA 4 piece table set, gold trim	650.

RAY HITCHCOCK, RR1 BOX 301, WINTERSET, IA, 50273
phone: 515-462-2074

M	EI ACORN BURRS tumbler	40.
A	EI MILLERSBURG DIAMOND tumblers, each	45.
B	EI BUTTERFLY & BERRY butterdish	200.
B	EI BUTTERFLY & BERRY butter lid	45.
B	EI BUTTERFLY & BERRY sugar lid	25.
B	EI GRAPE & GOTHIC ARCHES 7 piece waterset, N	500.
M	EI GRAPE & CABLE water pitcher	175.
M	EI WREATH OF ROSES rosebowl	30.
W	EI GRAPE & CABLE 10 1/2" ice cream bowl, chip on collar base	115.
G	EI WIDE PANEL EPERGNE, shelf piece	150.

PAT FRIEDMAN, 29 GREENWOOD STREET, NEWTON CENTRE, MA, 02159
phone: 617-527-5443

A	EI MEMPHIS punch cup, have three, each	35.
A	EI MEMPHIS punch base	50.
A	EI GRAPE & CABLE 2-handled bon-bon, N	48.
A	EI NESTING SWAN 10" bowl, radium	265.
G	EI DIAMOND tumbler	48.
G	EI GRAPE & CABLE punch cup, N	36.
M	EI GRAPE & CABLE butterdish, N	200.
M	EI HAND PAINTED SINGLE SHADE, see "Hand", page 159	65.
M	EI PRISMS footed 2-handled compote	50.
M	EI TREE BARK covered pitcher & 6 tumblers, 1 has lip nicks	125.

DORIS RODELANDER, 1300 BEAUMONT, CASPER, WY, 82601
phone: 307-234-9650

A	EI MARYLYN water pitcher	600.
PO	EI PETAL & FAN 7 piece berry set	250.
G	GI SINGING BIRDS 7 piece waterset	550.
M	EI BEADED SHELL open sugar	45.
M	GI TREE OF LIFE car vases, pair for...	50.
M	GI PERSIAN MEDALLION rose bowl	48.
M	EI PEACOCK TAIL 10 1/2" bowl	47.
G	EI EMBOSSED SCROLL 8" bowl	50.
B	GI HEART & VINE bowl	40.
A	GI Northwood 2-handled bon-bon	50.

LORENE SEBAUGH, 9116 FORT DONELSON DRIVE, ST. LOUIS, MO, 63123
phone: 314-843-6122

A	EI SUNFLOWER 8" bowl	55.
P	EI DIAMOND LACE 4 piece waterset	285.
P	EI GRAPE & CABLE butterdish	325.
G	EI OPEN ROSE 9" plate	135.
A	EI GRAPE & CABLE sweetmeat	225.
A	EI GRAPE & CABLE powder jar	85.
W	EI ORANGE TREE 9" plate	85.
M	EI WREATHED CHERRY banana bowl, dark M	68.
M	EI STAG & HOLLY 7" rosebowl, dark M	240.

GEORGE LOESCHER, 2420 PARK AVENUE, BELOIT, WI, 53511
phone after 5:30 PM: 608-362-3104

PO	EI SINGLE FLOWER 9" bowl, HP flower	50.
M	EI IMPERIAL GRAPE wine	20.
BO	EI CAROLINA DOGWOOD bowl	325.
LAV	EI THREE FRUITS plate, the BEST I've seen	135.
M	EI WREATH OF ROSES punch cup	12.
A	EI WREATH OF ROSES punch cup	16.
PO	EI DRAGON & LOTUS bowl, fabulous	420.
M	EI TROUT & FLY bowl, candy-ribbon edge	295.
VAS	EI ACORN COMPOTE, EXTREMELY RARE	2100.
A	EI FLUFFY BIRD tumbler	58.

JOHN STEWART, 99 ASTER CIRCLE, WEYMOUTH, MS, 02188
phone anytime: 617-337-1304

B	ORANGE TREE ruffled sundae	45.
PO	ESTATE creamer	75.
P	HEAVY IRIS tumbler	60.
P	HERON mug, small flake	170.
M	DAISY SQUARES goblet	160.
W	WIDE PANEL handled lemonade, signed	40.
B	PEACOCK & URN compote, not ruffled	45.
IG	MEMPHIS punch cup	50.
B	PERSIAN MEDALLION rosebowl	55.
W	PALM BEACH sugar-lid only	45.

HAROLD L. FORTNEY, 3710 WYANDOTTE, APT. 5, KANSAS CITY, MO, 64111
phone anytime weekends, after 5PM weekdays: 816-531-6197

IB	GI HEARTS & FLOWERS bowl, small flake on back	85.
B	EI THREE FRUITS 12 sided plate	70.
A	EI GREEK KEY bowl, N	65.
W	EI PEACOCK AT THE FOUNTAIN spooner, mint and super	100.
B	EI ORANGE TREE powder jar	60.
M	EI DOUBLE DUTCH bowl	35.
M	EI SINGING BIRDS 5 piece water set, dark color & super irid.	375.
G	EI SMOOTH RAYS large shallow bowl, super irid. & color	40.

RICHARD PARRISH, 1128 ELM STREET, DECATUR, IN, 46733
phone: 219-728-2666

G	EI LOUISA rosebowl	70.
EB	EI PEACOCK & URN 5" ice cream bowls, each	65.
EB	EI PEACOCK & URN 5" ice cream bowls, fully stippled, each	100.
G	EI SINGING BIRDS 7 piece berry set	250.
P	EI RASPBERRY tumblers, have 3, each	40.
G	EI ACORN BURRS, 5" berry bowls, have 4, each	45.

EVA BACKER, 12 SHERWOOD ROAD, WEST HARTFORD, CN, 06117
phone either: 203-232-1027 or 203-233-3761

M	EI SPRINGTIME spooner	80.
OLG	EI CONCAVE DIAMOND tumbler (top to jug) color is olive green	145.
G	EI HEAVY GRAPE 7" plate	65.
M	EI MILLERSBURG PEACOCK TAIL VARIENT compote	65.
M	EI GRAPE & GOTHIC ARCHES spooner	45.
G	EI SINGING BIRDS berry bowls, have 5, each	35.
A	EI FLORAL & GRAPE tumblers, have 3, each	35.
B	EI ORANGE TREE powder jar	70.
M	EI VINTAGE powder jar	60.
G	EI MILLERSBURG COSMOS small plate	50.

BARBARA NELSON, RFD 4 - BOX 155, LACONIA, NH, 03246
phone: 603-293-7246

W	EI PEACOCKS ON FENCE 8" plate, unusual plain back	195.
W	EI GRAPE & CABLE 11" ice cream bowl, basketweave ext, N	225.
M	EI GRAPE ARBOR orange bowl, feather scroll ext.	85.
M	EI PEACOCK AT FOUNTAIN large berry bowl, dark color, N	60.
M	EI PEACOCK AT FOUNTAIN small berry bowls, have 4, each	15.
	OR THE ABOVE 5 PIECE SET FOR	100.

LEE BRYANT, R.R. #1, DECATUR, IN, 46733
phone: 219-639-3415

G	EI GRAPE & CABLE (w. thumbprint) 5" saucer, have 3, each	25.
M	EI FLUTE punch cup, signed old Imperial, dark color	20.
M	EI OPTIC & BUTTON 5 3/4" saucer, dark color	17.50
G	EI PANSY folded bowl	30.
A	EI STAR OF DAVID & BOWS tight folded bowl	48.
B	EI RAMBLER ROSE tumbler	30.
M	EI HOBSTAR BAND tumbler, ground base	40.
M	EI LUSTRE ROSE tumbler	15.

AL RETTKE, 14226 EAST 143RD LANE, BURNSVILLE, MN, 55337
phone after 3PM weekdays, otherwise anytime: 612-432-7489

AO	EI FRUITS & FLOWERS footed bowl, damage	70.
AO	EI DAISY & DRAPES vase	255.
W	EI DAISY & DRAPES vase	115.
IB	EI HEARTS & FLOWERS bowl, flake	70.
A	EI MILLERSBURG PEACOCK & URN 5" berry bowl, best I've seen	75.
G	EI ORANGE TREE 8" ice cream shaped bowl, very superior color	75.
M	EI SINGING BIRDS creamer, bruise on base	20.
B	EI PEACOCK AT THE FOUNTAIN tumbler, Dugan variant	45.

J. VOKRAL, 439 GRANDE COTE, ST. EUSTACHE, PQ, CANADA, J7P 1H9

M	EI OCTAGON decanter with stopper	85.
PM	GI OCTAGON wine, clear foot	22.
P	GI ORANGE TREE mug	32.
M	EI ORANGE TREE goblet, 5 3/8" tall	75.
P	EI ORANGE TREE Loving Cup	160.
P	EI GRAPE & CABLE base to punch bowl	40.
M	EI ACORN BURRS 6 piece berry set	220.
M	EI SINGING BIRDS covered sugar	85.
W	ORANGE TREE footed water pitcher	450.
AO	DANDELION mug	450.

** PRICES ARE IN U.S. DOLLARS **

DICK WETHERBEE, 847 STAFFORD STREET, ROCHDALE, MS, 01542
phone: 617-892-4420

G	EI Fenton's DIAMOND & RIB 8" vase, pointed top edge, a beauty	22.
PO	EI FILE & FAN compote, lots of opal	85.
M	EI COSMOS VARIENT 9" fluted bowl, nice	28.
B	EI Fenton's HOLLY 6" hat, very pretty	28.
A	EI ACORN BURRS 5" berry dishes, have 6, each 22 or set for	120.
P	EI SCROLL EMBOSSED/Eastern Star back compote, NS burst bubble	45.
PO	EI SWIRL RIB 10" vase	35.
P	EI BASKETWEAVE 7" compote, marigold overlay, N	38.
M	EI ORANGE TREE wine goblet, marigold stem	25.
M	EI FINE RIB 6 1/2"H by 5"D squatty vase, super	32.

W A N T E D

BURNEY TALLEY, 1814 SLATE N.W., ALBUQUERQUE, NM, 87104
phone evenings: 505-242-1261

G OCTAGON wine decanter stopper
 G OCTAGON wines, need 5
 G FIELDFLOWER tumblers, need 3
 P FIELDFLOWER tumblers, need 5
 P OCTAGON tumblers, need 4
 M HEAVY IRIS tumbler
 ANY FENTON OPALESCENT PIECES, any color or pattern

RICHARD PARRISH, 1128 ELM STREET, DECATUR, IN, 46733
phone: 219-728-2666

P EI MEMPHIS base to fruit bowl, N
 ANY GOOD LUCK bowls or plates

AL RETTKE, 14226 EAST 143RD LANE, BURNSVILLE, MN. 55337
phone anytime: 612-432-7489

GREEN BUTTER BASE for Singing Birds, Peacock at the Fountain or Springtime
Will consider minor damage

MRS. JUDITH MILLER, 292 CARROLL CLOSE, TARRYTOWN, NY, 10591

P GRAPE & CABLE powder jar lid, N
 B, P, G LOUISA rosebowl
 G OPEN EDGE basket
 P HAT SHAPE, ANY PATTERN

WANTED

BARBARA E. ROWE, SHOREHAM, VT, 05770

M EI GRAPE & CABLE punch base, dark color (base opening is 3 3/4")

A.C. DICKEY, 144 CHANDLER STREET, VACAVILLE, CA, 95688
phone: 707-448-9386

IB GRAPES LEAVES 9" bowl, N
IB N'S PEACOCKS bowl
IB GOOD LUCK bowl, N

YOUR FOR SALE OR WANTS
CAN BE HERE NEXT MONTH



ORDER FORM FOR H.O.A.C.G.A. SOUVENIRS

PLEASE MAKE CHECKS PAYABLE TO
H.O.A.C.G.A. AND SEND TO THE
SECRETARY:

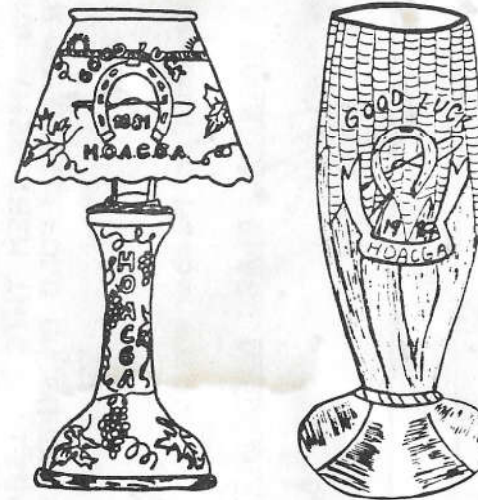
Diane Treff
13646 Leavenworth Road
Kansas City, KS., 66109

PLEASE MAIL:

_____ 1983 CUSTARD GLASS
W. MARIGOLD OVERLAY LOVING
CUPS AT \$40.00 PLUS \$3.00
POSTAGE FOR EACH

*** SPECIAL ***

_____ 1982 GILDED ICE BLUE
CORN VASE AND 1981 RED GRAPE
& CABLE CANDLELAMP AT \$100.00
PLUS \$6.00 POSTAGE EACH PAIR



** SUPPORT YOUR CLUB AND ORDER THESE FINE SOUVENIRS TODAY **

PLEASE PRINT YOUR NAME AND ADDRESS

HAVE A FRIEND WHO COLLECTS CARNIVAL BUT IS NOT A MEMBER? OR MAYBE SOMEONE WHO YOU HAPPEN TO MEET AT A SALE, SHOW OR AUCTION. BE AN ACTIVE MEMBER AND HELP YOUR CLUB GROW, AND GIVE THEM THIS APPLICATION. TEAR OUT OR XEROX THIS PAGE AND PUT IT IN YOUR BILLFOLD OR PURSE SO YOU WILL HAVE IT WITH YOU WHEN THE OCCASION ARISES.

Application for Membership

HEART OF AMERICA CARNIVAL GLASS ASSOCIATION

DATE _____

NAME: _____

SPOUSE: _____

ADDRESS: _____

CITY: _____ STATE: _____ ZIP CODE: _____

TELEPHONE (optional): _____

Do you want your name in the directory? YES _____ NO _____

DUES: \$20.00 per year--JUNE to JUNE--Couple or Family membership

We offer the best in monthly news and educational articles.

SEND DUES TO: H.O.A.C.G.A.

Diane Treff, Secretary
13646 Leavenworth Road
Kansas City, KS. 66109

Recommended by: _____