

AL RETTKE, HOACGA  
 BULLETIN SECRETARY  
 14226 EAST 143RD LANE  
 BURNSVILLE, MN 55337

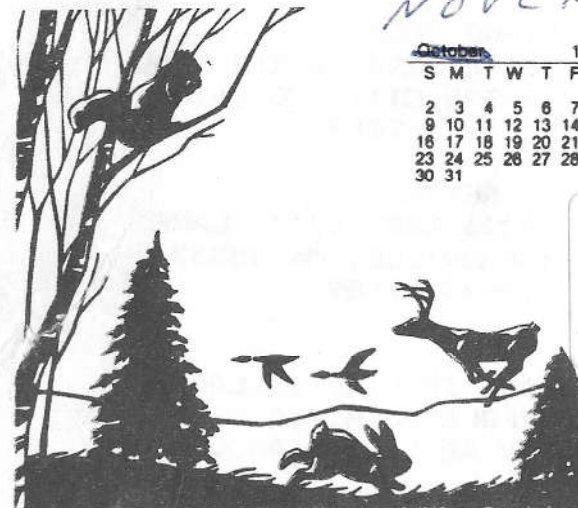
**FIRST CLASS**

INSIDE THIS ISSUE

RARITY REPORT.....page 7  
 TUMBLER SERIES..... 8  
 WALLICK AUCTION PRICES.....12  
 A CLARIFICATION AND NEWS  
 OF A MAJOR EXHIBITION.....13  
 NEWS FROM ABROAD.....17  
 UNUSUAL CARNIVAL.....21  
 BEADED CABLE ROSEBOWLS.....25  
 REPROS.....29  
 STRETCH VS. CARNIVAL  
 (EDITORIAL STATEMENT).....30  
 GLASS FOR SALE.....31-41  
 GLASS WANTED.....42-47

NOVEMBER

October							1983						
S	M	T	W	T	F	S	S	M	T	W	T	F	S
						1	2	3	4	5	6	7	8
						9	10	11	12	13	14	15	16
						17	18	19	20	21	22	23	24
						25	26	27	28	29	30	31	





## Heart of America

### Carnival Glass Association, INC.

MEMBERSHIP JUNE TO JUNE  
\$20.00 PER COUPLE OR SINGLE

PUBLISHED THE 15TH  
OF EACH MONTH

**PRESIDENT**

GEORGE D. McGREW, JR.  
6800 WOODWARD  
OVERLAND PARK, KS 66204  
913-262-8822

**VICE-PRESIDENT**

MICHAEL BASEY  
4315 ADAMS  
KANSAS CITY, KS 66103  
913-432-2460

**TREASURER**

ELIZABETH BOLLES  
5204 CATALINA  
SHAWNEE MISSION, KS, 66205  
913-432-5438

**SECRETARY**

DIANE TREFF  
13646 LEAVENWORTH ROAD  
KANSAS CITY, KS 66109  
913-721-2917

**BULLETIN SECRETARY**

AL RETTKE  
14226 EAST 143RD LANE  
BURNSVILLE, MN 55337  
612-432-7489

ALL MONETARY FIGURES QUOTED ARE IN U.S. DOLLARS  
PLEASE MAKE CHECKS FOR DUES PAYABLE TO H.O.A.C.G.A.  
AND SEND THEM TO THE SECRETARY AS LISTED ABOVE

=====

### OCTOBER MONTHLY MEETING

=====

On October 23, 1983, following a covered dish meal, Vice President Michael Basey called the meeting to order. There were 20 members present.

Vice President Basey thanked George & Elizabeth Bolles for having the club to their home for the meeting. He then welcomed members Ladora Allen, Don Lacock, and Ken Houck to the meeting.

Michael Basey then presented the Fenton Glass Film. After that, Secretary Diane Treff read the minutes of the September meeting. The minutes were approved as read.

Treasurer Elizabeth Bolles then presented the Financial Statement. Total Income for the month was \$459.90, for the Fiscal Year, \$9776.53. Total Expenses for the month were \$1501.01, for the Fiscal Year, \$5609.15. This leaves a fund balance of \$15,571.46 as of September 30, 1983. The Financial Statement was accepted as read and placed on file.

Convention Co-Chairman Cooley Miller reported that the KCI Holiday Inn does have a meeting room with a capacity of 30 persons. This room could be available to the Heart of America as a monthly meeting site. The fee would be \$25.00 plus \$1.00 per person for coffee.

Davis and Viola Shikles offered to have next months' meeting at their home. Robert Grissom reported that he has pictures of approximately 50 Enameled Water Sets for next years insert.

Michael Basey reported that Mosser Glass Company has confirmed the price and delivery date of April 1 on the purple table favor mugs. He also reported that John Britt will have the color insert of the 1984 souvenir ready by the pre-mailing time of the pre-registration and pre-ordering forms.

There was some discussion on the souvenir. Members present requested that we obtain a report from Souvenir Chairman John Britt. The main question of concern was as to where the HOACGA emblem and the butterfly were to be on the fernery. Members also inquired as to the \$2500.00 mold fee and what all it covered.

Michael Basey announced that the club could save \$ .50 per souvenir if they are run at the Fenton factory in November. Doing this, the club would not receive a sample for inspection. If this were agreed upon, only 350 to 400 souvenirs would be made. This would also eliminate the

pre-ordering of souvenirs. It was the general response of the members present to postpone this option until an in-depth report on the souvenir from John Britt was obtained.

Mike Basey then reported on his display for National Carnival Glass Month. It was also reported that 20 New Members were acquired as to date during the month.

The Vice President then took a poll of the members present as to how they felt about doing away with the liquor supplied by the club at the convention. There was mixed response. Those agreeing to do away with the liquor did not feel that the club should supply beer if they were not going to supply liquor.

Robert Grissom reported that Dorothy Taylor, member of HDACBA and founder of the Encore Club, will be having a convention the three days before the Heart of America Convention. There will be an auction at her convention with both old and new carival glass.

Next months' meeting will be at the home of Davis & Viola Shikles, 606 Leslie Drive, Independence, MO. There will be a covered dish meal at 12:30 and the Meeting will begin at 2:00. Next months' program will be given by Mr. Dennis Sutton on Tornado Vases.

Michael Basey then adjourned the meeting.

-----  
DIANA TREFF, SECRETARY

\*\*\*\*\*

I was so happy to get answers to my inquiries concerning Beaded Cable rosebowls and Dragon & Lotus bowls. I still need information on Good Luck bowls. I would like to THANK Ivan L. Mitchell, Judy & Ed Kasper, and Carl & Eunice Booker for all of their help with this. Sorry I have not gotten back to you all yet, I will be in touch soon. (Hopefully before this comes out in print). If anyone has any information on Good Luck bowls, please drop me a line. THANKS AGAIN EVERYONE, FOR ALL OF YOUR HELP.

MICHAEL J. BASEY

=====

COMING EVENTS

=====

Boy, has this been a busy month!! It all started out with me putting up a display for Carnival Glass Month. I had my display in the shop window of one of our members, Marie Darnell. Her shop, Designs By Marie, is located at 3139 State Avenue in Kansas City, KS. Marie has a flower shop which deals in real, dried, and silk arrangements. She does beautiful work from what I saw. I would like to thank her for letting me set up the display which ran from October 1st to the 14th. Then it wa off to Emporia for Mrs. Hartung's auction. I saw some beautiful glass there, but was unable to come home with anything, everything seemed to go high in price. Then I was off to Wichita for the Air Capitol Carnival Glass Club's "Mini-Convention". Then it was back to Kansas City to get my coming events program ready. It really has been a busy month! As of this date, I have not received any news about anyone having a display during the month of October. Remember, I would like to hear from you if you did do something for Carnival Glass Month. Drop me a line.

RECRUIT A NEW MEMBER

During the month of October, which is Carnival Glass Month, I asked you all to go out and recruit a new member. The following is a list of new members recruited during Carnival Glass Month by our existing members and through an ad placed in The Antique Trader Weekly.

NEW MEMBERS

RECRUITED BY

James & Cynthia Hendrickson, OK  
Bob & Jan Bullock, KS  
John & Carolyn Mikkonen, MN  
Gary & Donna Braden, IL  
Robert & Ernestine Windsor, Canada  
Sandra & David Siegel, Canada  
Robert Morehead, MS  
Brenda Johnson, MS  
Mr. M. Curran, England  
Earl & Gladys Bacon, PA  
Carol & John Zittel, NY  
Marjorie & Edwin Floyd, NC  
Loree Salyer, CA  
Bonna & Michael Cowan, LA  
Sandra Downey & Mr. Downey, MS  
Tom & Sharon Mordini, IL  
Albert & Eleanor Rodenhouse, MI

Lucile Britt  
Al & Wendy Rettke  
Robert Streamming  
  
Heather Helm  
Michael J. Basey  
Rosa Grissom  
Marion Quinton-Baxendale  
Randy Smith  
Les & Bev Tuthill  
Mary Elkins  
Marie Capps  
Frank & Clara Brisbane  
Don & Helen Wagner  
Lucile Britt  
Antique Trader Ad

NEW MEMBERS

Dennis Keck, PA  
 M/M J.B. Kambitch, IL  
 Joe & Marilyn Edson, CO  
 Jerome & Rita-Ann Kelly, Canada

RECRUITED BY

Antique Trader Ad  
 Antique Trader Ad  
 Antique Trader Ad  
 Antique Trader Ad

I would like to take this time to WELCOME these new members and to THANK the people who took the time to recruit a new member during Carnival Glass Month. THANKS FOR HELPING OUR CLUB GROW!! As of October 29, we have recruited 21 new members.

THANKS AGAIN FOR ALL OF YOUR SUPPORT!!

COMING EVENTS--OCTOBER PROGRAM

Our October program was put on by myself. It was the movie from the Fenton Art Glass Company entitled "How Glass Is Made". The movie which lasted about 30 minutes, gave us a tour of the company and the different processes the glass goes through. In my opinion, the movie was better than being there because there were things in the movie that I am sure you could not see in one day while on a tour. I think that when you are on a tour, you only see what is being done that day. This way you can see so many different things being done.

They showed how they make Carnival, Custard, Lime Silver Glass, and Ruby Red Hobnail. We saw the mixing room, this is the place where they prepare the mix that goes into the glass. There are only two or three people that know the formula for the mix but it is also put in a computer for future reference. When they are making glass and want a blue glass, they add copper to the mix. For green they add iron, and for gold they add coin gold. The three main ingredients for the mix are pure silica sand, soda ash, and lime.

Fenton Glass still makes its glass by either pressing it in molds or hand blowing it. They showed us how they put the crimp in a bowl. When they have to reshape a piece of glass, they have to put it back in the fire. They call this spot the "glory hole". Sometimes they have as many as six or eight men working around the glory hole. When they press glass, the man they call the "gather" takes the hot glass and puts it in the mold and cuts off the right amount and the "presser" presses it. If the glass is pressed for too long a time, it will crack. If it is not pressed long enough, it will not fill the mold. It takes someone about eight to ten years to become a good presser.

When they put handles on a basket, they attach a piece of glass to one end and cut it off, then they turn the piece around and attach it to the other end. When the handle is put on the basket, the person doing the work leaves some kind of ID mark on it. Each mark is different so they can tell who made the basket just by looking at the handle. When they put the handle on, they only have about 30 seconds to shape it before it becomes rigid and they cannot work with it. When they shape a piece of glass they use a cherry or apple wood paddle that is waxed so the hot glass does not stick to it.

To blow glass, they start with a small bubble of hot glass on the end. If this bubble is not in exactly the right place, the glass will not form properly and will be no good. The person that does this work is called the blower. In the movie, they showed us how they make swung vases. If the vase is no good, they stop the process by letting the vase fall to the floor. The people that make these vases are called swingers.

A new mold is entirely hand-made and can take up to three months to complete. The detail can be tremendous, some of the mold-makers even put veins on some of the leaf designs. When an inexperienced person starts at the factory, all they do is carry glass. They are called carriers and are able to work on Saturdays and any other extra time they have to learn how to work with the glass. When a piece of glass is hand-made, each piece of glass is different. There is no such thing as a "perfect" piece of hand-made glass, each has some flaws.

When they paint a piece of glass they do not use stencils, all painting is done freehand. They say you should not use acid food in a piece of painted glass, it will eventually discolor the painting. Some of the glass that is broken is reused and some is sold to be used in the making of marbles kids play with.

I know there is more that I could write about and am sure there are some things I have forgotten. I hope this gives you some idea of what the movie was about and would suggest that everyone who has the opportunity to see this movie do so. I really enjoyed it and am sure everyone else at the meeting did too. I forgot that they showed us how they put the iridescence on carnival glass. They spray it on while the glass is hot and it melts into the glass and becomes a part of it. See, I told you I could write more and that there were things I have forgotten. I best stop now because if I don't, I would take up the whole Bulletin with my Coming Events column.

NEWS REPORT

I have received a letter from Don Doyle of Rockford, IL on the blue Iris compote. He stated that he had purchased one in 1975 and at first thought that it might be Millersburg but later found it to be a Fenton item. He has since sold the compote. Thanks for the information and for writing me, Mr. Doyle. Remember everyone, I would like to hear from you all on anything of interest to you.

LATE REPORT ON SEPTEMBER PROGRAM

I have not received anything on this program, so there will not be a summary from Mrs. Loftus. I am sorry to have to report this again.

COMING EVENTS--FUTURE PROGRAMS

November	Dennis Sutton	Tornado vases
December	No program	No meeting
January	Robert Grissom	Table Sets

Until next month, GOOD GLASS HUNTING EVERYONE!!!

MICHAEL J. BASEY  
VICE-PRESIDENT

\*\*\*\*\*

=====

RARITY REPORT

=====

We are happy to report that CRAIG HEELY from Ohio has just found a Millersburg Cherries 9 1/2" ice cream bowl with the HOBNAIL exterior in BLUE. This, of course, is an extreme rarity. CONGATULATIONS CRAIG!!!

Imagine our surprise when we got the Woody brochure of the Munson auction. There on the cover was another Northwood Peacock & Urn chop plate in Marigold. We have since learned that it was NOT a chop plate, but a very flat ice cream bowl with just 1/2" of the edges turned up. There is still just one in this color as far as we know.

AL & WENDY

\*\*\*\*\*

=====

EDUCATIONAL TUMBLER SERIES

=====

by John & Lucile Britt

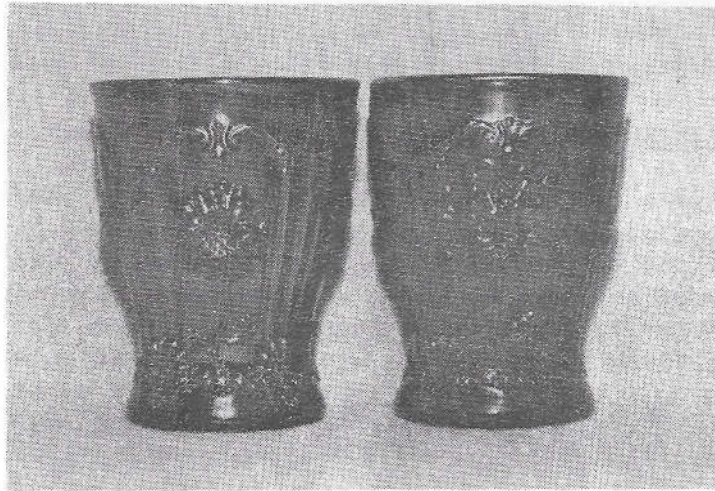


DAHLIA - A DUGAN/DIAMOND DANDY

Shown above are "Dahlia" tumblers in the three main colors in which they were produced - - namely marigold, purple, and white. They were made in many shades of both the purple and marigold colors. For instance, I have seen tumblers in an almost black, deep purple where you needed the sun or a very strong light to tell what color they really were. They are also found in other shades of purple down through a very light amethyst color. Marigold tumblers can be found in a beautiful light pastel color on up to a deep, rich marigold. White tumblers can also have their variations, but in this case, it is the painting that provides the difference. While some are on a beautiful frosty white without any paint applied whatsoever, a few can be found where the flowers have been factory painted with gold or blue coloring. "Dahlia" tumblers are considered quite scarce by collectors and authors alike. While they were not made in any great abundance in any color, I consider the purple tumblers to be the hardest to find. There are four dahlia flowers placed around the outside of the tumbler. A pretty scroll type design appears at both the top and bottom of the tumbler. The bottom part of the design is made to look like the tumbler is sitting on four little feet. Actually, other pieces in this pattern, including the water pitcher, table set, and berry set do have true feet. The underside bottom of the base of these tumblers contain a rayed star type of figure.

The "Dahlia" pattern was long considered a Northwood product, even though no pieces were ever found with a Northwood trademark. We now know that these "Dahlia" pieces were made by Dugan/Diamond at the old Indiana, PA factory. It is interesting to note that in custard glass, there is a tumbler known as "Fan" that is almost identical to "Dahlia" except that it contains no flowers at all in the pattern. This "Fan" pattern was also made by Dugan/Diamond.

One should not fail to mention that "Dahlia" tumblers were reproduced. Fortunately, in this pattern, it is very simple to tell the new tumblers from the old. The new tumblers have only three of the dahlias placed around the tumbler, while the old ones will carry four of these flower designs. I have seen the new tumblers in purple, white, and pastel blue. Of course, old "Dahlia" tumblers were never made in the pastel blue color, but they were produced in the frosty white and purple colors. If your tumbler has four of these dahlias around the outside, it is definitely old.



THE EXTREMELY RARE  
DAHLIA-VARIANT  
TUMBLER IS ON THE LEFT

Here we show the "Dahlia-Variant" alongside the regular "Dahlia" tumbler. Note that the flower is only about half as large on the variant as on the regular example of the "Dahlia" tumbler. Many times in carnival glass where variants were made, it is a case of where another company copied the original pattern. Examples of this are in patterns such as Floral & Grape, Peacock & Urn, Peacock at the Fountain, and Three Fruits, just to name a few. I do not believe that to be true in this case however. It is my opinion that the variant mold was probably made first. Later they likely decided to add more tool work to the flower in the mold in order to make the design look fuller and the flowers prettier. I have noticed this type of work done in such patterns as Lotus & Grape, Good Luck, and Dragon

& Berry. In the case of the Good Luck pattern, I am referring to the Good Luck bowl (that was recently sold at auction) where the full design of the Good Luck pattern was not contained on the bowl. Also, it was not the Heart & Horseshoe pattern, which was quite likely a copy of the Good Luck pattern.

Only one of the very rare "Dahlia-Variant" tumblers has ever been reported to date. It is in the purple color. I would suspect there are a few more out there somewhere, as I am sure more than one of these were made. Note the difference in these two examples and check your "Dahlia" tumblers to see if you might have one of the rare "Dahlia-Variants" in your collection. This extremely rare and very unusual "Dahlia-Variant" is owned by Jim & Nan Warren of New York. I would like to thank them for sending us this tumbler in order for us to take the above photograph to use in this article. This story on the "Dahlia" and "Dahlia-Variant" tumblers represents our 70th edition to this series. Next month we will cover the "Lattice & Grape" tumbler which was made by the Fenton Art Glass Company of Williamstown, West Virginia.

JOHN & LUCILE BRITT



"DAHLIA" WATER PITCHER

\*\*\*\*\*

For us, this long auction year ended October 29th with the Wallick collection being sold by Tom Burns. It was really one of the nicest collections we have seen as it had so many nice pastels and rare items. It had to have been lots of work bringing the collection from Seattle, WA., however it was worth it. Almost every item sold above the going price list-with many bringing top value or more. Which to us, after the many thousands of pieces of carnival sold this year, nearly seems like a miracle.

The weather was pleasant and a large crowd came, I believe about 130 bidding numbers were given out. It was nice to see so many friends there and even met some new ones. Met Marie Capps from CA for the first time, and a lovely lady from Yakima, WA. who bought some good pieces to take back home. Harold Ludeman was there and purchased some of the pastel rarities. The write in bids also were successful on several items. It was really a great sale, with exceptional pieces from start to finish. The gross was around \$108,000.00.

Want to mention the nice couple from California who came to visit us the Sunday before the auction in New Philadelphia. They had left home October 5th and had enjoyed the Air Capitol Mini-convention in Kansas and some other auctions along the way. They are Dean & Diane Fry-haven't been collecting too long but are quite knowledgable. We enjoyed having them and seeing them again at the auction. Emma Tilton took them all around Millersburg and they had a firsthand look at the Courthouse there. They bought some pretty carnival and were going to stop off at Woody's auction at Galesburg, IL. on November 5th. We can only think how far it is for us to go.

Though we did bid on a few items, we did not get anything at the auction. On the way home, we stopped off at a house where we had seen some carnival before and decided to take a nice "474" milk pitcher home. It is in the nicest dark purple that you can barely see through. The lady also had three little Kitten pieces that we had to add to our cat family. They really weren't bargains either as she had a price guide to go by.

Tom announced that he would have another auction at the same Holiday Inn next March, so that thought may help us survive the long winter when we will have to stay close to home. We will no doubt look back on the whole years' events with great pleasure and will hope we have the opportunity to see all our nice carnival friends next year.

GRACE & BYRON RINEHART, Charleston, WV

\*\*\*\*\*

BURNS AUCTION, OCTOBER 28-29

We would like to thank Tom Burns and Rick Kojis for furnishing the following prices which were realized at the auction of the Wallick collection in New Philadelphia, Ohio. Tom also reported that most of the items that sold for record setting prices had exceptional color and we will do our best to separate them for you, marking them with a \*. Pieces will be listed in order sold, here are some highlights:

IB Peacock at Fount. punch bowl and base 2350, EB Peacock at Fount. pitcher 420\*, IB Peacock at Fount. master berry 375, IB Peacock & Urn master i.c. 675\*, IG Peacock & Urn master i.c. 575, AD Peacock & Urn small i.c. 1000, AD Peacocks bowl-piecrust edge 850\*, IG Peacocks bowl-piecrust edge 475\*, EB Peacocks bowl-piecrust edge 350\*, P Peacocks bowl-piecrust edge 310\*, IG Peacocks plate 325, M Peacocks stippled plate 230\*, AD Dandelion mug 475, AD Finecut & Roses rosebowl (flake) 450.

IB Daisy & Plume rosebowl 800\*, AD Leaf & Beads rosebowls 2 @ 300\*, AD Leaf & Beads nut bowl (checks in feet) 475, IGD Leaf & Beads rosebowl 1600\* (SIXTEEN HUNDRED), pastel Amy Leaf & Beads rosebowl 500\*, Teal Blue Leaf & Beads rosebowl 1000\*, IB Beaded Cable rosebowl 1000\*, IB Drapery rosebowl 475\*, AD Daisy & Drapes vase 350, IGD Fentons Flowers rosebowl (flake) 600, G Orange Tree loving cup 275\*, IG Bushel Basket 220, AD Bushel Basket 325, P Town Pump 475.

AD Rose Show bowls 2 @ 500, IB Rose Show bowl 250, IG Rose Show bowl 500\*, G Rose Show bowl 500\*, M Rose Show bowl 100, IB Poppy Show plate 750\*, AD Hearts & Flowers compote (pastel 350, Butterscotch 250), IG Hearts & Flowers compote 575\*, G Hearts & Flowers compote 550\*, B Hearts & Flowers compote 250\*, P Hearts & Flowers compote 175\*.

IB Grape Leaves bowl 775\*, AD Fruits & Flowers bon-bon 475\*, IG Fruits & Flowers master berry bowl 875\*, AD Three Fruits ftd bowl 350, AD Three Fruits plates 850 & 825, AQUA Three Fruits stippled plate 700\*, W Three Fruits bowl 250\*, W Wishbone ftd bowl 425\*, IB Raspberry 6 pc water set 2250, IB Grape Arbor tumbler 150, IB Oriental Poppy tumbler 175.

PD Persian Garden fruit bowl 350, M Whishbone chop plate 500, IG Strawberry bowl 575\*, IB Memphis fruit bowl-base-4 cups 2100\*, IG Memphis punch bowl-base 2950\*, W Panther master berry (flake) 625, M Zipper Loop 4 1/2" finger lamp (damaged) 650\*, MMG Carolina Dogwood bowl 450, AD Vintage bowl 500, IG Grape Arbor hat shape 375\*, the following are all GRAPE & CABLE: W fernery 1400, IG fernery (damages) 500, IB banana bowl 450, IG banana bowl 450, IB small fruit bowl 800\*, IG small fruit bowl 650\*, W small fruit bowl (point polished) 350.

=====

PRIME CARNIVAL GLASS AND SECONDARY CARNIVAL GLASS

=====

by RAY NOTLEY

I find myself, an Englishman, in the curious position of promoting prime American Carnival Glass, of defending it and proudly declaring it to be the original and best from both the technical and artistic point of view.

The first large scale Museum Tour of Carnival Glass is currently touring the United Kingdom. Whilst there have been many displays of a local nature both here and in the United States (and Australia), this is the first fully documented and Museum backed tour. It is also the largest (600 items) touring Exhibition of glass that anyone in the Museum world can recall. It has taken over two years of preparation to organize and has inspired much activity in the UK with regard to Carnival Glass. However, I was quite alone when faced with the task of arranging the glass, of documenting it and looking at Carnival Glass as a historical glassware and not as a collectable. This means no modern collector's names on the labels but only in the catalog. The Carnival objects are displayed and labeled as serious pieces of glass with a history. Social history decorates the walls of the Exhibition with postcards, photographs, advertisements, etc. This insures that the visitor places Carnival Glass in its correct historical place. The glass too, is arranged in sequence with iridescent glass from Ancient Rome, art glass from Bohemia and Tiffany, etc. setting the scene for mass produced Art Glass which is what Carnival Glass is. Following standard Museum practice, and common sense, the glass is ranged in sequence from 1908 to 1983. There is little point in displaying a gigantic selection of Carnival Glass in haphazard order. This Museum Tour is to introduce Carnival Glass to people who in the main, know little about it. They follow the entire sequence through. There is an accompanying catalogue, a full colour poster, colour prints, and the Handbook written by myself. There are many caption cards throughout the show and the labels alone are 10,000 words in total. There are linked radio programmes, magazine articles and it is all being stored on video by one glass museum. There is much else going on and I have given the first two public lectures in Europe on the subject of Carnival Glass as well as endless radio interviews. The glass of Harry Northwood and his father John Northwood I, have been shown together for the first time and indeed, Broadfield House Glass Museum is but a stone's throw from where he was born.

The Exhibition is a huge success and has been extended through to the autumn of 1984. We are loaning out 600 superb pieces for nearly 15 months free of charge. Admission to the Museums is free (with one exception). I have given up this years holidays to work, unpaid alas, for one week in

each of the Museums showing this glass to help unpack and arrange the glass. The time scale in all this is really facinating. The Handbook (see booklist) was delivered to the publisher in October 1982 for issue in the Spring. The Catalogue for the August 1983 opening went to be designed and printed before Christmas 1982 as did the poster. Publicity photos and photos for magazine articles all had to be taken in the Spring and one magazine sent a huge van to take away 18 pieces for studio photography last March. This is for a magazine to be issued next December!!! Absolute chaos. There has never been such a Carnival show before, and the work involved is colossal. I have been unable to do research, to keep up my HOACGA articles, and worst of all, I've had little or no time to write, phone, and keep in touch with my friends. We have also had the most successful launch of the Carnival Glass Society (UK) and I edit all their material as well. In between all this, I go to my regular full-time job!!!!

The Handbook for this show is in fact, the first book to look at Carnival as a historical glassware and not as a collectable. There is no price guide, little indication of rarity, and what I wrote is backed by the fullest bibliography yet published on the subject. This was reduced to 2 pages from the original 8. The way I write is quite simple. I follow Mrs. Hartung in as much as I do not comment on or write about glass that I have not actually seen, and where possible actually handled. I take all my own photographs, I borrow no slides. I doublecheck all material and I am prompt to correct errors that I have made. I accept comment on errors gracefully. I research Carnival Glass as seriously as it deserves. I have placed it in it's correct historical perspective and to do so, choose my words very carefully indeed. I have been twice to the United States to see as much Carnival as I possibly could, and have done so thanks to the incredible friendliness of all USA collectors. I suppose I have handled some of the great rarities. However, I'm coming back for more and I'm going to Australia to see their glass for myself. I've already been to Continental Europe, but more on that later.

The booklet, the catalogue, and the exhibition itself explain and show the difference between Prime Carnival, Secondary Carnival, New Carnival and Reproduction Carnival. (Modern Souvenirs of the Carnival Associations are also included and have been much admired).

There has been recent comment in the Bulletin on my use of the definitions "Prime Carnival" and "Secondary Carnival" from both the well known and the little known. I was misquoted by one and must point out that I did NOT use the word "primary" as mentioned the month before last.

"Prime" means first in order of time, rank, or importance; of the highest quality; the height of perfection; the best part. The word "Prime" in all



its suggested usage is related to historical precedence and superiority. The word "Primary" is related to biology, geology, colour and politics, none of which seem to interest the majority of Carnival Collectors. (Thank goodness). . I use the word, Prime, quite deliberately.

Prime Carnival Glass is that made in the Ohio Valley between 1908 and 1928. From any historians view, and not just mine, this is the first in order of time, rank and importance. It is of the highest quality. It is the height of perfection. It is the best part of the family of glass ware that has come to be known as Carnival Glass. It is no use calling this Prime Carnival "American" for there is also American new, reproduction and Souvenir carnival. If a Limey can swallow his pride and declare this Prime American Carnival to be the best, then I cannot see why this historical fact can be unpalatable to the Yankee. Who is going to call it Prime anyway? You know it is. We are all going to continue to say "This is a nice piece of Fenton" and "Just look at the finish on this Millersburg bowl". You know that such glass IS Prime Carnival with the full meaning of the word "Prime" as I have already described.

Secondary Carnival Glass is the glass made outside the USA. Quite simply that. "Secondary" means subsidiary, of a second order, of a second stage, derivative. What other word is there to describe the Carnival made outside the USA? One glass historian told me quite frankly that as far as she was concerned, after seeing the Exhibition and our collection at home, that, in her opinion, the first NEW Carnival was made by Sowerby in 1926 in the UK. (She was right!!!) I would point out something that most of you already know. I am the co-owner of the largest collection in Europe of Carnival Glass. We probably have the best collection of Secondary Carnival that there is. It would be very easy for me to boast of the importance of this Secondary glass. This I do not do.

All Carnival Collectors search high and low for examples of Prime American Carnival Glass. Nobody as far as is known has a collection consisting entirely of Secondary Carnival. It would be a very dull collection. Marigold, blue, and amethyst with no elaborate hand finishing. There would be no green, no pastels, no opalescent, no white, no ice green, no ice blue, etc. and none of the wonderful variety of iridescence to be found on the prime glass. Of course there are some absolutely wonderful secondary items and they have been bought for their quality with amazingly appropriate prices. A prime price for a secondary article is nothing to be ashamed of. In fact most good secondary pieces are worth a lot of money because they are so scarce.

However, the message is getting through, I hope. If you have a piece of Sowerby Carnival, then please call it that. "A piece of Sowerby Carnival". It is from the secondary phase of production and the Sowerby factory was in England. If you have a piece from the Crown Crystal Works

in Sydney, then please call it that. "A piece from the Crown Crystal factory". It too, is from the secondary phase of production and the Crown Crystal Works was in Australia. The same applies to patterns that you can identify from articles in HOACGA, etc. as coming from the Eda Glasbruks, Riihimaki, Karhula, etc. which are all secondary factories in Sweden and Finland. This is why I write for you in HOACGA, so you can share all this. When I show someone say for example a Dragon & Lotus bowl, I do not say to them, "This is a piece of American glass", I say "This is a nice Fenton piece". If they wish to know more then I explain that it was Fenton who were the originators of prime carnival glass. If they enquire further, then quite frankly, a new collector has caught the bug!!!! If you have say a creamer or dish in Pineapple pattern, then show it to someone and say "Who do you think made that?" When you tell them it was Sowerby and they ask who the devil, etc., then quietly explain that they were an English factory who made secondary carnival following in the wake of the prime American glass. It makes sense. It is sense. It is what happened. It is history.

It is a historical fact that Carnival Glass was made in a certain order. I am very pleased indeed to be able to confirm that Mrs. Hartung was right in maintaining the supreme position, the prime quality of American Carnival Glass. I have used two very well chosen and correct words to describe the two distinct periods of Carnival Glass production. I am not linked to values and price guides and I am sorry that such a link has been attributed to my choice of words. If the price of Carnival is to be affected by historical truth, then it is obvious the historical facts will have to be altered to fit the ups and downs of the Dow-Jones Index. I for one, am not prepared to do this.

**American Prime Carnival Glass is all supreme and always will be. Everything else is secondary, new and reproduction.**

**IT IS ALL TO BE TREASURED AND LOOKED AFTER.**

**RAY NOTLEY**

**\*\*\*\*\***

## THANK YOU

My thanks to all Club Members who have so far purchased my new book CARNIVAL GLASS WORLDWIDE. This is now available with payment in US \$ -- please see the Carnival Glass Library for details.

I am also pleased to announce that a successful Television programme has taken place for Television South-West (UK) to cover the display of my Carnival Glass at the Truro Royal Cornwall Museum and the release of my book as detailed above.

A Video recording has been made and is available FREE OF CHARGE for use at Club Meetings. Both BETA and VHS formats. I hope this short programme (around 4 minutes) will appeal to all my fellow collectors and emphasize the growing interest here in UK for Carnival Glass, its history, and its collecting. Copies are being sent to Australia, Canada, Sweden, South Africa and Finland, as well as to America.

Here are a photograph and article from a recent display at Tiverton Museum in Devon, England. If I look surprised, it is because I had just found a rare punch bowl and base in amethyst -- just in time for the display. Carnival Glass seems to have a happy knack of turning up in the most unexpected places at the most unusual times. Unfortunately there were no cups, so I await the pleasure of finding those some other time, some other place.

The book review followed a smaller display at St. Austell in Cornwall. Both of these were followed by a radio interview and local interest has been considerable. I learnt from Mrs. Joan Doyle that local arsenic was mined from the Devon Greenhill Arsenic Stack in the early years of this century and despatched in barrels to USA and to Northern Europe for use in glass industries there. The arsenic was placed in barrels lined with blue heavy paper -- for as the local saying went "arsenic did run where water didn't". The lead mines of Cornwall are also renowned for their exporting at this time, so perhaps some of this ended up in Carnival Glass of this era. An intriguing link which once again underlines the "worldwide" appellation now given so deservedly to this ware. Look out for "Lion Brand" arsenic adverts in old trade magazines -- all the way from the UK!!

M. QUINTIN-BAXENDALE, ENGLAND

TIVERTON GAZETTE MAY 24<sup>th</sup> 1983



THE distinctive iridescent glassware that was once sold at fairs for around one penny a piece, now fetches prices of up to £5,000.

And at exhibition of the glassware, commonly known as Carnival Glass, (example above) is now on at the Tiverton Museum until the end of the month.

Around 500 pieces are on show and are from the personal collection of Mrs Marion Quintin-Blaxendale, of Cornwall.

Mrs Quintin-Blaxendale said the range was first made in 1905. It was the first mass-produced fringed glass, but each piece was hand-finished so each was individual. It lost its popularity when art Deco became the fashion.

Mrs Quintin-Blaxendale has written a book on the subject, Carnival Glass Worldwide -- the first to cover the history, production, and collecting of glass outside England.

CORNISH GUARDIAN

Page 14. SEPT 15<sup>th</sup> 1983

books, books

## Through glass

MARION Quinton-Baxendale is possibly Britain's foremost authority on what is known in the antiques world as carnival glass and from her home in Newquay has produced a book on the subject which is attracting massive attention from all over the world.

The tastefully produced "Carnival Glass Worldwide" details Marion's unique research into the theme which has been backed up by recent exhibitions in the Newbury, Salisbury and Tiverton museums.

And a mini-exhibition of colourful carnival glass pieces were put on display in the window of the National Provincial Building Society offices in Fore Street, St. Austell.

### IN EUROPE

Marion explains that carnival glass is iridised pressed glass which was manufactured from 1905-1930s.

She says the pieces were originally thought to have been made in quantity only in America and Australia, but the book reveals that the process was also in use throughout Europe, especially in Scandinavian countries.

The book contains more than 200 colour photographs and is intended as a basic guide for all collectors. It is priced at £8.75 and is available from any bookseller or from Carnivalia Publications, PO Box 1, Löstwithiel, Cornwall PL22 0YZ RT

## FALL FESTIVALS

For 20 years we have been going to Millersburg Fall Festivals and would always hear about the nearby Sugar Creek Fall Festival that is held the week before. We had always felt that they were too close together for us to go to both but this year we gave up that thought and headed for Sugar Creek on Friday, September 30th. Sugar Creek is only 15 miles from Millersburg and about 15 miles from New Philadelphia, OH.

The weather was perfect for the large crowd to enjoy the Sugar Creek "Kiddies" parade and other events. About 2PM we decided to go to Millersburg and have a look around. Most of their windows were already decorated so we had a sneak preview. The Lowes of Killbuck, OH always have a lovely window full of carnival every year and it was great to see it ahead of time. Very little other carnival in the other windows but one can view lots of other antique collections. One window was full of every kind of butter churn and molds of every description. We enjoyed every display and always thank the people who go to all the trouble to do them.

About 4PM, we went back to Sugar Creek and found a parking spot. Their parking is so limited, we had to walk quite a ways to the main part of their quaint little town. Much of the architecture is of the "Swiss" type. Chairs and benches lined the street and, if you were lucky, you might find a vacant bench to sit on. A nice band from Wisconsin or Michigan was on the stage, dressed appropriately in Swiss attire and playing polkas and waltzes. Some were dancing to the music and there was much yodeling going on but we enjoyed listening as we looked at a few windows and shops. We did leave before dark to rest up for the next days events.

We were up before daylight to go into town early to get the parking space we wanted and to miss the solid line of traffic. In less than half an hour the whole place was humming. We had breakfast and then settled down on a nearby bench to watch the band contest, yodeling contest, and costume contest. The crowd was so thick you could hardly walk anywhere. We met relatives Bob & Ruth Kuhl who were driving their antique car in the 2PM parade and left with them to have a picnic lunch. When we got back, the crowd was at least 10 deep from the street and we had to squeeze into a spot to get a peephole for the parade. Right after the parade we left so the traffic would not hold us up. It was a lovely weekend and we were glad we finally took the time to go.

On Friday, October 7, we left for the Millersburg Festival. Such lovely weather and the foliage was coloring beautifully too. We again looked at windows and saw some new ones. One had such lovely carnival and we inquired if it was for sale and it was not. The Lowes window sure drew plenty of compliments but we were disappointed to learn Lucille would not have a booth at the antique show. We drove on to Ashland, OH to the Kuhls and were up early on Saturday to get back to Millersburg. We ate breakfast at a restaurant and met the Heeleys of Painesville and spent the day together. There was hardly any carnival at the antique show. We went back to the Kuhls for the night and left early on Sunday for home. Stopped along the way at flea markets but found nothing. It was a wonderful weekend anyway, saw several carnival friends, enjoyed lots of music and all kinds of food stands, and visited the tent full of crafts, etc. On Sunday was to be the big parade but we had to pass it up. Maybe next year we'll make plans to stay for it. Everyone says it is great.

GRACE & BYRON RINEHART  
CHARLESTON, WV

\*\*\*\*\*

NOTE: DON DOYLE was at Millersburg and said some of the glass he saw included the only two known AQUA OPAL OHIO STAR VASES, a BLUE PEOPLES VASE, the only known AMETHYST MILLERSBURG HOLLY COMPOTE, an extra beautiful PURPLE MILLERSBURG PEACOCK & URN BANANA BOAT and several other items. Sounds like a nice place to visit.

\*\*\*\*\*

### SOUVENIR QUICKIE

I am not going to bore you with a long sales pitch this month. Just a reminder that we still have some Loving Cups and table favor mugs left. So if you do not have these or want more, let us know, we'll be happy to sell them to you. If we have to eat the souvenirs we have left, they may be the main course at the banquet next year!! If there is anyone out there who did not get a souvenir that they ordered or has one that was damaged in shipment, let me know. As far as I know, we've only had 2 lost or damaged in shipment this year.

ROLAND KUHN, 1983 SOUVENIR CHAIRMAN  
1202 West 4th St., Haysville, KS 67060

# SWEDEN'S CURVED STAR

by DON MOORE



CURVED STAR EPERGNE

This has to be my nomination for the wierdest piece in the entire Carnival spectrum. It's one of those things you expect to see in a magazine with a caption; "WHAT IS IT AND WHAT DOES IT DO?" It might also inspire a comment such as "WHAT TIME DOES THAT THING LAND IN CHICAGO?"

Well in case you have any interest in knowing, it is a 3 piece Curved Star epergne. It stands 18" tall and was made by the Eda Glassworks in Sweden. Most of you are familiar with the celery or chalice shown on the next page. It is often refered to as "Cathedral" but is in fact the same Curved Star pattern.



CURVED STAR CHALICE

Many other pieces in both marigold and blue can also be found in this pattern.

The output from this Swedish factory was of excellent quality and included the rare Rose Garden pitcher.



CURVED STAR 2-PIECE FRUIT BOWL

This two piece fruit bowl is the only one I have seen. The base, however, is often seen as a compote or as a sugar that goes with an open creamer.

There is also a rose bowl, a covered butter, a flower holder and a covered cheese dish.



Shown above is this same epergne knocked down into its three component parts. It is all held together with a metal fixture in the base and top portions that are screwed together to hold the bowl in place in the middle. The top portion is sometimes inverted and called a candle holder.

I purchased this epergne at the Mello auction in California in August 1983. (O.K. so I'm weak) It sold for \$190 and is considered rare. The desirability factor is another matter. If you have a dark closet, it might be alright.

Would you believe we have friends in Culver City, California who want to buy this piece after I finish this article?

We have many STRANGE Carnival friends.

DON MOORE

\*\*\*\*\*



### Marion Hartung Estate. Carnival Glass

By Roberta Birk

A punch bowl considered to be the rarest piece of carnival glass in existence was offered for sale this morning at a public auction in the Anderson Building on the Lyon County Fairgrounds. The bowl was one of approximately 400 lots of carnival glass that were to be sold as part of the estate of the late Marion T. Hartung.

"The punch bowl is probably going to be the best piece ever sold," said John Woody, owner of an auction company that specializes in antique-glass sales. "It'll probably break all records." Carnival glass buyers from across the country were expected to attend the sale to bid on the bowl.

### Californian's Bid for Punch Set Highlights Hartung Glass Sale

By Roberta Birk

A Northwood Acorn Burrs punch set considered to be the rarest example of carnival glass in existence brought a premium price at an auction held Saturday in the Anderson Building on the Lyon County Fairgrounds.

The set was part of a 400-lot collection of carnival glass owned by the late Marion T. Hartung, who lived at 814 Constitution St. Mrs. Hartung was an internationally recognized authority on the glass and was the author of many books on that subject.

John Woody, owner of the company in charge of the auction, conservatively had estimated the set might bring a top bid of \$3,500. That estimate was \$9,000 less than the actual high bid of \$12,500, made by a collector from California, and was reported to be one of the highest

prices ever paid for carnival glass.

"It took about 45 seconds to sell it," lone Hinshaw said. Mrs. Hinshaw, with attorney Roy Jordan, is co-executor of the Hartung estate. She said the auction attracted more than 200 collectors from across the United States.

Antiques, furniture, household goods and other items from the estate were sold at auctions held Thursday and Friday. The total value of the estate was estimated to be at least \$500,000.

In addition to specific bequests to her family, to several friends and to St. Andrew's Episcopal Church, Mrs. Hartung's will stipulated that the proceeds from the remainder of the estate should be divided equally between her son, A. Bruce Hartung of Gastonia, N.C., and St. Jude's Children's Research Hospital in Memphis.

-----  
**BEADED CABLE ROSEBOWLS**  
-----

Too often we fail to respond to a request for information because we feel less than knowledgeable about the subject. Michael J. Basey requested information on Beaded Cable rosebowls, so I'll try and furnish what I can. (I remember Michael's "May Baskets Carousel" display at the I.C.G.A. convention in St. Louis)

As Eunice's collection specialty is rosebowls, we have nine Beaded Cables in our collection. We can definitely report the following colors:

PLAIN INTERIOR

Aqua Opal\*  
Marigold  
Green  
Amethyst\*  
Blue

RIBBED INTERIOR

Marigold\*  
Green\*  
Amethyst\*  
Purple\*

\*These rosebowls have ribbed feet, the others have plain, rounded feet.

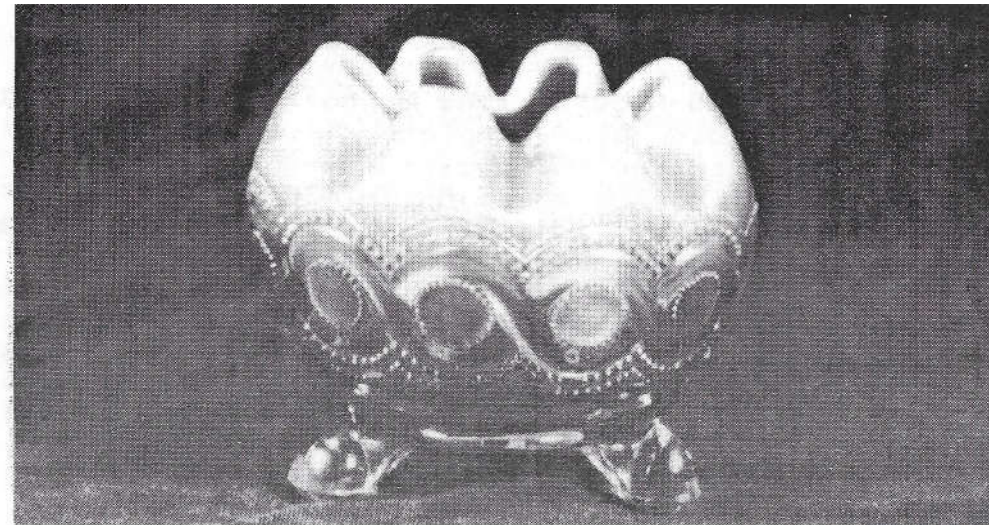
The Northwood N can be found on both plain and ribbed interiors and plain and ribbed feet. All nine of ours are marked. I do not know if there are any other pattern variations or not.

In addition to the above rosebowls, we have knowledge of White and Ice Blue. I don't know about the interiors. A Peach Opal rosebowl was reported recently in California. If memory serves me correctly, a rosebowl was sold at the Greguire auction in 1977 by John Woody. It was listed as Peach Opal, but was either milk glass or custard with a Marigold overlay. It sold for over \$400.

I'm sorry I can't give any more information on this pattern. John Stewart's index of HOACBA research does not list this pattern, and my own listing of ICGA research does not indicate any other information.

Rosebowls in their endless variety of pattern, color, and whimsy shapes have not inspired any of our leading researchers to delve into this area. Lincoln Land did publish an article in their January '83 newsletter and published a color insert on rosebowl shapes. (They also list Beaded Cable rosebowls in Ice Green) Rick & Jackie Kojis, editors of the Lincoln Land newsletter, may be able to give you more information.

CARL & EUNICE BOOKER, Griffith, In



-----  
**BEADED CABLE ROSEBOWL IN AQUA OPAL**  
-----

The rosebowl shown above also has the plain interior, ribbed feet and is N marked just as the Bookers'. This is our favorite rosebowl in our collection, very pastel iridescence and lots of opal. They are quite available in this color, but due to demand, are worth from \$200-275.

Perhaps we can help some on the range of colors and a bit of history. The Booker's memory is absolutely correct about the marigold on milk glass (custard) Beaded Cable rosebowl selling for over \$400 at the 1977 Greguire auction. It is easily worth twice that today.

The Peach Opal Beaded Cable rosebowl (now in a California collection) was found by a northern Iowa dealer in that area last winter. It was advertised for sale for \$1500 and sold for an undisclosed sum. It is a double rarity, being both the only known Beaded Cable rosebowl in this color and the only known TRADEMARKED piece of Northwood peach opal.

We can also report that Ice Green Beaded Cable rosebowls definitely do exist, but you will have a devil of a time finding one. The only one we have been offered was two years ago and have not heard of another one for sale since. If you own one, consider yourself very lucky.

You will also have a tough time locating a White or Ice Blue rosebowl in this pattern. The demand is always very high for these and prices go accordingly. An Ice Blue Beaded Cable rosebowl just sold for \$1000 at the Burns auction October 28.

OLD CARNIVAL GLASS LIBRARY

CARNIVAL GLASS RARITIES-A color line approach. Lists the top 10 rarities in each color-plus complete rarities price guide-40 pages of black and white pictures-special section on whimsys-\$8.50 pp. Also THE SHAPE OF THINGS IN CARNIVAL GLASS, 110 pages, 200 items in full color-\$9.95. Don Moore, 2101 Shoreline Drive, Apt 462, Alameda, CA. 94501.

CARNIVAL GLASS SERIES-by Marion T. Hartung. Each book has 100 different patterns-10 books in the series, books 1,2 and 3-\$3.00 ea, books 4 thru 10-\$3.50 ea. 1981-82 price guide-\$5.00 pp, Northwood Pattern Glass-clear, colored, custard and caranival-\$9.95, plus .50 postage. Order from Ione Henshaw, 903 East 6th Ave., Emporia, KS 66801.

CARNIVAL IN LIGHTS-A full color book on Carnival Lighting, including Gone With The Wind Lamps, Candle Lamps and shades-price guide included-\$11.95 plus postage, Helen Greguire, 103 Trimer Road, Hilton, NY. 14468.

CARNIVAL GLASS TUMBLERS-Author Richard Owens-order from Don Brown, Wallace-Homestead Book Company, 1912 Grand Ave., Des Moines, IA. 50303.

IMPERIAL CARNIVAL GLASS-THE EARLY YEARS-\$9.95, FENTON CARNIVAL GLASS-THE EARLY YEARS-\$9.95, Price guide 1981-82 edition-\$3.95-MILLERSBURG THE QUEEN OF CARNIVAL GLASS-\$8.95, THE STANDARD ENCY. OF CARNIVAL GLASS-650 different full color patterns photographed, 223 page hardbound illustrates and evaluates Dugan, Fenton, Imperial, Millersburg, Northwood, Minor American, English Carnival, and more-\$24.95, NORTHWOOD, KING OF CARNIVAL GLASS-\$9.95, Bill Edwards Author, Collectors Books, Paducah, KY.

CARNIVAL GLASS--by Ray Notley, Shires Album # 104. ISBN 0 85263 637. Price is only \$3.55 including postage. Send to 7 Hills Books, 519 W. 3rd. Street, Cincinnati, OH. 45202.

CARNIVAL GLASS WORLDWIDE--by M. Quinton-Baxandale. 200 Colour Photographs \* Pattern Name Index \* Exclusive Research \* Clubs Worldwide Listed \* Order from: CARNIVALIA PUBLICATIONS, PO Box 1, LOSTWITHIEL, CORNWALL, L22 0YZ, ENGLAND US \$13.50 (surface mail) US \$15.00 (airmail) Payment with order please, by International Cheque or Money Order.

FENTON GLASS-THE FIRST 25 YEARS-144 pages, 72 in full color, more than 400 items pictured in Fenton's carnival and iridescent "stretch" colors, rare catalogue reprints (some in color), a complete history of the factory's early years, from 1907 to 1932, \$15.95 for softcover edition with price guide, \$20.00 for limited edition hardbounds. Order from the author, William Heacock, P.O. Box 27037, Columbus, OH. 43227.

Angela Hallam's 52 page fully illustrated paperback-first book to tell about the English-made Carnival-\$3.35 surface postage, air mailed \$4.35 Order from Wise Books, 82 Chart Lane, Reigate, England, RH2 7EA.

1983 Edition--CARNIVAL GLASS AUCTION PRICE REPORT. A list of over 4600 sale prices of Carnival, 2300 from 1982 auctions. Patterns are alphabetical by Hartung name. Information includes description, shape, color, sale price, date, auctioneers and sellers names, and a separate section for advertising and souvenirs. Single copy price is \$8.00, postpaid. Al & Wendy Rettke, 14226 East 143rd Lane, Burnsville, MN. 55337.

OTHER REFERENCE MATERIAL

Presznick's "Encyclopedia of New Carnival and Iridescent Glass". A great reference book with color plates galore and prices, \$19.95. Reichel's "Modern Carnival Glass", 100 illustrated pages of Carnival made since the 1960's. Volume 1, \$4.00, Volume 2, \$4.95, Price Guide for both volumes \$2.50. Add \$2.00 for shipping and insurance. Theodore A. Parent, Box 596, RD 1, Canfield, OH, 44406.

"Encore by Dorothy" books 1 and 2. A series of books on new reproduced Carnival Glass, giving information on the patterns and colors that are being reproduced. A invaluable asset to the old carnival collector, possibly saving him many dollars by knowing what has been reproduced. Price for each book is \$7.70 postpaid. Be sure to state which book you want. Dorothy Taylor, Box 11734, Kansas City, MO, 64138.

REPRODUCTIONS

CARNIVAL BOWLS

GREAT COLLECTIBLES

PURPLE IRIDESCENCE



BIRD'S EYE VIEW PG/2611

PG/2611 "STAG AND HOLLY" CARNIVAL BOWL. 9 1/2 in. Each... 12.50



BIRD'S EYE VIEW PG/2614

PG/2614 "BUTTERFLY" CARNIVAL BOWL. 9 in. Each... 12.50



PG/2612 "STAG AND HOLLY" PATTERN

WHITE OPAL IRIDESCENCE

PG/2612 "STAG AND HOLLY" BOWL. 9 1/2 in. Each... 12.50



PG/2615 "BUTTERFLY" PATTERN

PG/2615 "BUTTERFLY" CARNIVAL BOWL. 9 in. Each... 12.50

Most collectors will recall that A & A Importing Co. of St. Louis introduced a reproduction of the STAG & HOLLY bowl in purple a year and a half or two years ago. They followed this about a year ago with the same piece with white opal iridescence. These were unsigned and carried only a paper label showing they were made in Taiwan.

Collectors should now be alerted to the fact this same company is now offering a reproduced BUTTERFLY & BERRY master berry bowl in the same two colors.

The A & A new catalog advertisement for these new BUTTERFLY & BERRY bowls as well as the STAG & HOLLY bowls is shown above. Note that they have reversed the pattern names on the two "white opal" pieces.

DON MOORE

\*\* CARNIVAL CALENDAR \*\*

DECEMBER 11

LINCOLN LAND CLUB CHRISTMAS PARTY

To be held at Holiday Inn/West, 201 North Mayfair Road, Milwaukee, WI. Reservations may be made by calling the motel direct at 414-771-4400.

FEBRUARY 10-11, 1984

LOOSE YOUR HEART TO CARNIVAL GLASS JAMBOREE

Sponsored by the Tampa Bay Club at the Huntley Inn, Lakeland, Florida. We all have heard of the bargains that turned up here last year, don't miss out!! Contact Art Smith, 4535 Holder Court, Lakeland, FL 33803 for more details.

\*\*\*\*\*

STRETCH VERSES CARNIVAL

I have had quite a number of requests from members to publish either For Sale or Wanted ads for stretch glass. It is obvious to those of you who have sent them in that I have not done so. I feel strongly that stretch glass does not belong in this publication unless it is in a Carnival pattern. Then, in my mind, it is a Carnival rarity. (Celeste Blue examples: Grape & Cable ftd. bowl, Plaid bowl, or other primarily Fenton patterns) Even though stretch and Carnival had overlapping production periods, they are two different collectables, and we are a Carnival Glass club.

The same is true of Millersburg crystal. It is not Carnival and will not be published.

This is not a judgement of worth concerning these very collectable pieces of Americana, only that as a Carnival Glass organization, we stick only to Carnival. I would love to advertise for some of my wants in my other areas of glass collecting, but it cannot happen in the Bulletin.

AL RETTKE  
BULLETIN SECRETARY

\*\*\*\*\*



-----  
**FOR SALE**  
 -----

A.C. DICKEY, 144 CHANDLER STREET, VACAVILLE, CA 95688  
 phone: 707-448-9386

M	EI BROOKLYN BRIDGE bowl	250.
A	EI COURTHOUSE bowl, lettered	450.
A	EI INVERTED STRAWBERRY tumblers, have 3, each	300.
M	EI IMPERIAL GRAPE pitcher & 7 tumblers	160.
M	EI GRAPE ARBOR pitcher & 6 tumblers, pitcher light at bottom	340.
M	EI WATERLILY & CATTAILS tumblers, have 6, each	20.
M	EI LATTICE & DAISY tumblers, have 6, each	20.
P	EI ORIENTAL POPPY tumblers, have 6, each	50.

\*\*\*\*\*

DON DOYLE, 2416 ASHLAND, ROCKFORD, IL 61103

CLM	EI FLUTE water pitcher, Whitlow collection	100.
G	LI POINSETTIA milk pitcher	35.
M	EI PROPELLOR tall compote, unlisted, small base repair	25.
M	LI KOKOMO rosebowl, chigger bites on two feet	20.
M	EI QUARTERED BLOCK creamer	25.
G	EI HEARTBAND toothpick holder, souvenir of Springfield, Mass	22.
CLM	EI LUSTER & CLEAR handled relish dish, Iron Cross signature	15.
CLM	EI FLUTE creamer, signed	15.
M	EI FINE RIB 6 1/2" fan vase	15.

\*\*\*\*\*

GERALD COLE, 503 ROANOKE, BLUE SPRINGS, MD 64105  
 phone: 816-229-0635

M	EI MIKADD compote	125.
G	EI ACANTHUS bowl	75.
A	EI RAYS & RIBBONS bowl, Millersburg	60.
B	GI ORANGE TREE stemmed wine	45.
M	EI OCTAGON pitcher	95.
M	EI BUTTERFLY & BERRY footed creamer	45.
M	EI HOBSTAR covered butter	50.
M	EI HOBSTAR spooner	40.
M	EI HOBSTAR covered sugar, small chip	35.
M	EI HOBSTAR creamer	40.

TOM MORDINI, 36 N. MERNITZ AVE., FREEPORT, IL 61032  
 phone: 815-235-4407

W	EI DAHLIA small berry bowl	50.
P	EI GRAPE & CABLE 9" plate	85.
M	GI GRAPE & CABLE 9" plate	60.
G	EI PERSIAN MEDALLION 6" plate	110.
W	EI ORANGE TREE 9" plate	135.
W	GI CARNIVAL HOLLY 9" plate	90.
G	EI WHIRLING LEAVES bowl, radium	85.
M	EI WREATH OF ROSES compote	25.
G	EI WREATH OF ROSES compote	35.
P	GI ORANGE TREE small size mug, very deep purple	150.

\*\*\*\*\*

A.A. FOGLEMAN, 101 CEDARWOOD DRIVE, JAMESTOWN, NC 27282  
 phone: 919-454-3267

B	EI ROUND UP 9" plate	165.
B	EI PEACOCK & URN 9" plate, Bearded Berry on back	155.
B	EI PERSIAN MEDALLION 9 1/4" plate	125.
EB	EI THREE FRUITS plate, stippled	160.
P	EI GRAPE & CABLE DRESSER SET, 8 pieces, NICE	1400.
P	EI GRAPE & CABLE 7 piece water set, very good	350.
P	EI GRAPE & CABLE tableset, 4 pieces	400.
M	EI KITTENS toothpick	110.
M	EI VINTAGE wine	25.
G	EI STRAWBERRY 9" plate, Northwood	85.

\*\*\*\*\*

MRS. BILL FARMER, RD #5, BOX 462, WHEELING, WV 26003  
 phone: 304-336-7689

P	EI DOUBLE DUTCH bowl, flake on one foot	20.
A	EI BUSHEL BASKET, N, flake on one handle	30.
B	EI BUSHEL BASKET, N, 2 feet repaired	20.
M	EI FINE CUT & ROSES rosebowl, flake on one foot, dark color	30.
PD	EI ruffled vase	20.
PD	EI HOLLY bowl	25.
W	EI QUESTION MARK bon-bon	55.
A	EI HEART & VINE bowl, piecrust edge	30.
M	EI IMPERIAL GRAPE wine decanter, no stopper	35.
P	GI GRAPE & CABLE punch base & 3 cups	55.

OTHIE OWSLEY, 409 TRUMAN, CLINTON, MO 64735  
phone: 816-885-2128

B EI PEACOCK AT THE FOUNTAIN tumbler, N 45.  
B EI STORK & RUSHES tumbler, N 35.  
M EI FASHION punch base, dark color 30.

\*\*\*\*\*

BARBARA NELSON, RFD 4, BOX 155, LACONIA, NH 03246  
phone: 603-293-7246

A EI FLOWERS & BEADS 7 1/4" six-sided plate 50.  
M EI VINTAGE fernery 45.  
M EI TWO FLOWERS 6" 3-footed bowl, ruffled top, dark marigold 20.  
W EI PEACOCKS ON FENCE 9" plate, plain back, N 225.  
M EI SHELL 8" bowl, stippled 25.  
M EI MEMPHIS small berry bowls, dark marigold, N, have 3, each 15.  
B EI STORK & RUSHES tumbler 35.  
W EI PEACOCK @ FOUNTAIN small berry bowl, N 25.

\*\*\*\*\*

GARTH IRBY, 4136 FILMORE STREET, ST. LOUIS, MO 63116  
phone after 6PM: 314-752-0160

VAS EI ACORN bowl 135.  
M EI HOBSTAR spooner 35.  
P EI DANDELION mug, pinhead on handle 275.  
B EI N CHERRY ground tumbler 30.  
PO EI CAROLINA DOGWOOD 9 1/2" bowl 125.  
AMB EI LUSTRE ROSE fernery 60.

\*\*\*\*\*

FRANCES GANNON, 8743 BRANTON, HIGHLAND, IN 46322  
phone: 219-923-8134

M EI MAPLE LEAF tumbler, dark 35.  
M EI BUTTERFLY & PLUME tumbler, dark 35.  
M EI ORANGE TREE mug 18.  
P EI IMPERIAL GRAPE water carafe, best color 160.  
B EI HEART & VINE 9" bowl, super color 50.  
G EI SCROLL EMBOSSED 9" plate, rim chip 35

A.O. CROMER, 1150 N. TOPEKA AVENUE, WICHITA, KS 67214  
phone: 316-262-1775

A GI PEACOCK & URN 10 1/2" chop plate, N 625.  
PM GI PEACOCK & URN stippled master ice cream bowl, N 210.  
A GI MILLERSBURG PEACOCK & URN scalloped bowl 210.  
R EI BLACKBERRY hat shape, 4 sides turned up 265.  
R GI BLACKBERRY hat shape, silver iridescence 185.  
M EI PERSIAN MEDALLION 2 handled nappy 45.  
A EI Dogwood vase compote on black milk glass 85.  
M EI DAISY & BLOCK rowboat 210.

\*\*\*\*\*

GIL CORRIVEAU, BOX 5, STURBRIDGE, MA 01566  
phone: DAYS 617-347-3304, NIGHTS 617-347-9930

W EI HEARTS & FLOWERS compote 90.  
G EI SINGING BIRDS water pitcher, N 290.  
A EI PEACOCKS ON FENCE plate 200.  
M EI NESTING SWAN bowl 180.  
M EI GRAPE & CABLE perfume bottle 325.  
W EI APPLE BLOSSOM TWIGS ruffled plate 80.  
PO EI RAINDROPS bowl 55.  
M GI FOUR-SEVENTY-FOUR milk pitcher 85.  
G GI SCROLL EMBOSSED plate 60.  
M EI ORANGE TREE goblet 75.

\*\*\*\*\*

OMER SWEENEY, 28 ESMOND STREET, ESMOND, RI 02917  
phone: 401-231-4108

P EI PEACOCK AT THE FOUNTAIN tumbler, N 25.  
B EI BUTTERFLY & BERRY tumblers, have two, each 30.  
M EI FEATHER & HEART tumblers, have two, each 50.  
M EI FENTONS BASKET 18.  
M GI GREEK KEY shades, have 12, each 30.  
P EI GRAPE & CABLE powder jar bottom 15.  
G EI GRAPE & CABLE powder jar bottom 15.  
IG GI HOACGA 1979 hatpin holder 50.  
R GI HOACGA 1980 loving cup 50.  
R GI HOACGA 1981 candle lamp 80.

\*\*\*\*\*

JOS. MELLO, 535 FISH ROAD, TIVERTON, RI 02878  
phone: 401-624-2174

M	EI GRAPE & CABLE 8 piece punch set, small	350.
W	EI POPPY SHOW 9 1/2" plate	285.
PO	EI FAN handled gravy boat	65.
A	EI FRUITS & FLOWERS 9 1/2" fruit bowl	60.
PO	EI SIX PETALS fluted bowl	65.
M	EI LUSTRE ROSE 7 piece water set	150.
M	EI IMPERIAL GRAPE tumblers, have 4, each	18.
M	EI LATTICE & DAISY tumbler	18.
M	EI STORK & RUSHES tumbler	18.
M	EI FASHION punch bowl base	20.

\*\*\*\*\*

SHERMAN KELL, 919 THOMASVILLE ROAD, HOUSTON, MO 65483  
phone: 417-967-4414

IB	EI PEACOCK & URN ice cream bowl	495.
A	EI MILLERSBURG PEACOCK & URN ice cream bowl, satin, no beads	325.
AD	EI DRAPERY rosebowl	195.
P	EI GRAPE & CABLE sweetmeat	185.
M	EI KITTENS cup & saucer, saucer has pinhead	170.
M	EI COMOS VARIANT 10" bowl	30.
M	EI WHIRLING LEAVES large bowl, radium	85.
G	EI LITTLE FLOWERS 7 piece berry set	265.
B	EI PEACOCK TAIL 2 handled bon-bon	35.
P	EI SKI STAR 10" bowl	85.

\*\*\*\*\*

DON MAYS, RT. 2, BOX 178, EARLYSVILLE, VA 22936  
phone: 804-973-3941

M	EI LUSTRE ROSE butterdish	35.
AQUA	EI BLACKBERRY SPRAY hat shape	40.
M	EI HONEYCOMB & CLOVER bon-bon	25.
B	EI WREATH OF ROSES punch bowl, Persain Medallion interior	225.
W	EI FROSTED BLOCK bowl, marked Made in USA	28.
P	EI FINECUT & ROSES rosebowl with fancy interior, foot chip	60.
P	EI WINDMILL oval tray	50.

\*\*\*\*\*

MARY WELCH, 213 ALEXANDER, SCOTIA, NY 12302  
phone: 518-393-7748

A	EI MILLERSBURG HANGING CHERRIES spooner	60.
A	EI MILLERSBURG HANGING CHERRIES creamer	60.
A	EI MILLERSBURG HANGING CHERRIES covered sugar, chips top edge	25.
A	EI MILLERSBURG HANGING CHERRIES covered butter, nicks base	75.
M	EI GRAPE & CABLE punch cups, N, have 6, each	12.
M	EI IRIS compote, satin	42.
M	GI FINECUT & ROSES rosebowl, flat flake on edge of one foot	26.
A	EI "TEXAS" creamer	55.
M	GI LUSTRE ROSE butter top only	12.
A	EI S-REPEAT punch cups, have six, each	20.

Send 2 stamps for list of 350 items for sale

\*\*\*\*\*

DELOURIS M. CRAFT, 702 BRADLEY DRIVE, BLOOMINGTON, IL 61701  
phone: 309-662-3610

P	EI CHERRIES (Dugan?) 4 1/2 by 8" bowl, sides pulled up, looks red, flake on foot	52.
B	EI Fenton's THISTLE banana bowl, small roug spot one foot	180.
A	EI Fenton's THISTLE banana bowl, base color runs from amethyst to amber, outstanding gold iri., three very minor damages	105.
M	EI TWO FLOWERS 9 1/2" ball footed bowl	49.
B?	EI CHERRY CIRCLES bon-bon, blue base & handles, rest amber	48.
P	EI SIX PETALS tri-cornered bowl, gold & silver color, exterior like black milkglass	45.
M	EI FEATHER STITCH 9" bowl	42.
A	EI CARNIVAL THISTLE 9" bowl, mfr. flaw on ext. iridescence	43.
B	EI VINTAGE fernery	55.

\*\*\*\*\*

MARY HERREN, 520 S. BERRY, MORGANFIELD, KY 42437

AQUA	EI THIN RIB 9 1/2" vase	30.
M	EI VINTAGE nut bowl, 6 footed	35.
A	EI GRAPE & CABLE 9" fluted bowl	40.
M	EI MILLERSBURG CHERRIES creamer, tiny handle roughness	16.
A	EI GRAPE & CABLE tumblers, have 5, \$22 each or all for..	100.
A	EI GRAPE & CABLE pitcher, 1/4" chip on one thumbprint	150.
G	EI MILLERSBURG COSMOS 6" dish	23.

MRS. CLARENCE OSTERBUHUR, 802 HACKBERRY, GARDEN CITY, KS 67846  
phone: 316-275-5615

M	EI PRETTY PANELS tumblers, have 4, each	30.
M	EI Bulbous pitcher, enameled apple blossoms	90.
B	EI ENAMELED CHERRIES tumbler, N	30.
B	EI Bulbous pitcher, enameled cherries & little flowers	100.
A	EI PINEAPPLE creamer	40.
M	EI THISTLE & THORN creamer	20.
G	EI SHELL & JEWEL covered sugar, creamer-no lid	40.
P	EI FLUTE sauces, have 4, each	20.
P	EI FLUTE large berry bowl	40.
G	EI GRAPE & CABLE thumbprint berry set, 7 pieces, N	225.

\*\*\*\*\*

CATHY & DICK FENTON, P.O. BOX 105, MACEDONIA, OH 44053  
phone: 216-467-1143

M	GI BUTTERFLY & BERRY (FANTAIL interior) 8 1/2" footed bowl	60.
G	EI TREE TRUNK vase, N, 9 1/2"	32.
B	EI CAPTIVE ROSE 9" bowl	42.
A	EI THREE FRUITS 9" footed bowl	45.
M	EI SINGING BIRDS mug	60.
M	GI FLORAL & GRAPE pitcher	80.
M	EI TIGER LILY pitcher	95.
A	EI FISHERMAN'S mug, silvery iridescence	75.
PO	EI STIPPLED FLOWER 7 1/2" bowl	42.
A	EI PEACOCK TAIL compote	32.

\*\*\*\*\*

EDWARD L. HENDERSON, 1111 N. COLLEGE, STUTTGART, AK 72160  
phone after 7PM: 501-673-8757

C	EI CARNIVAL HOLLY 8" bowl, small rim chip	30.
A	EI "TWELVE POINT" 8" bowl	40.
M	EI PANTHER (BUTTERFLY & BERRY ext) 8" footed bowl, tiny crack	50.
M	EI "ROSE" butterdish with lid, light marigold	40.
M	EI "DIAMOND" jelly compote, chip on rim	10.
M	EI "RIB" jelly compote	12.
M	EI STAR & FILE large compote, 6" by 6"	50.
M	EI "DAISY & FERN" nappy	20.
M	EI GRAPE & CABLE two handled bon-bon	40.
A	EI CRACKLE 9 1/2" plate, unusual	35.

CHARLES WILTSHIRE, 4603 22ND AVENUE, KENOSHA, WI 53140  
phone: 414-654-5249

A	EI ROSETTES 6 1/2" footed bowl	125.
P	EI ACORN BURRS pitcher	500.
VAS	EI ACORN 7 3/4" bowl, marigold iridescence dark	125.
VAS	EI PEACOCK & GRAPE 8 1/4" bowl, marigold iridescence	175.
A	EI MILLERSBURG STRAWBERRY square shaped bowl, 6 1/2 X 6 1/2"	110.
G	EI OCTET 8 1/2" dome footed bowl	65.
M	EI BUTTERFLY bon-bon	45.
B	EI CHRYSANTHEMUM bowl, dark cobalt blue	85.
G	EI PASTEL SWAN	30.
G	EI GREEK KEY 8 1/2" dome footed bowl	90.

\*\*\*\*\*

DICK HATSCHER, BOX 261, WALNUT HILL ROAD, BETHEL, CN 06801  
phone: 203-743-1468

M	EI WAFFLE BLOCK tumblers, rare, have 3, each	98.
M	EI BLACKBERRY BLOCK pitcher, hairline where handle applied	175.
M	EI GRAPE & CABLE dresser trays, have 2, each	125.
P	EI FLUTE punch cups, have 5, each	28.
PO	EI PETAL & FAN 10 1/2" master berry bowl	125.
PO	EI SKI STAR 8 1/2" handgrip plate, rare	225.
PO	EI PERSIAN GARDEN fruit bowl, rare & gorgeous	275.
PO	EI FOUR FLOWERS small plate, have 3, each	68.
AO	EI LEAF & BEADS rosebowl	225.
BO	EI DAISY WREATH bowl	265.

\*\*\*\*\*

RAY HITCHCOCK, RR 1, BOX 301, WINTERSET, IA 50273  
phone: 515-462-2074

M	EI KITTENS cup & saucer	215.
M	EI KITTENS saucer	90.
M	EI BUSHEL BASKET, 8 sided	75.
B	EI HANGING CHERRIES creamer	80.
G	EI GOOD LUCK bowl	125.
AMB	EI DRAGON & LOTUS ice cream shaped bowl	150.
W	EI PERSIAN GARDEN master ice cream	160.
IB	EI ACORN BURRS punch base	175.
A	EI PARADISE SODA advertising plate, N B/W	210.
G	EI LEAF & LITTLE FLOWERS compote, radium finish, outstanding	240.

CHUCK BULLARD, 14915 DARK STAR COURT, MORGAN HILL, CA 95037  
phone: 408-779-1452

M	EI GOOD LUCK piecrust edge bowl	125.
R	EI FINE RIB vase, silvery	165.
P	EI SKI STAR sauce	45.
IG	EI PEACOCKS ON FENCE plate	225.
B	EI CARNIVAL HOLLY plate	125.
G	EI IMPERIAL GRAPE plate	90.
P	EI PEACOCKS ON FENCE plate, stippled	250.
W	EI POND LILY bon-bon, handle rough	140.
M	EI FIELD THISTLE 6 1/2" plate	55.
M	EI HOBSTAR & FEATHER punch cups, have 10, each	25.

\*\*\*\*\*

DICK WETHERBEE, 847 STAFFORD STREET, ROCKDALE, MA 01542  
phone 617-892-4420

M	EI THREE FRUITS 8" bowl, cherry center	35.
PO	EI SWIRL RIB 10 1/2" vase, a beauty	37.
M	EI SCALE BAND 6 3/4" plate	25.
B	EI RAMBLER ROSE tumbler	38.
M	EI SAILBOATS 6" sauce dish	25.
CLAM	EI DAISY BASKET, 10 1/2", handled, pretty & old	35.
G	EI TREE TRUNK 8" squatty vase, N	28.
M	EI SCALES 8" compote, N	35.
A	EI MILLERSBURG BLACKBERRY WREATH 7" ruffled bowl	45.
M	EI AUTUMN ACORNS 8 1/2" ice cream bowl, outstanding	32.

\*\*\*\*\*

CLIFFORD DECKER, R1, BOX 209, WHITNEY POINT, NY 13862  
phone: 607-692-3762

B	EI VINTAGE compote	40.
M	EI GRAPE & CABLE candlestick, light marigold	50.
M	EI ORANGE TREE footed orange bowl	50.
W	EI VINING TWIG bowl, base slightly rough	45.
M	EI LEAF & BEADS rosebowl	40.
P	EI LEAF & BEADS rosebowl	60.
A	GI LITTLE FISHES 5 1/2" footed bowl	50.
PO	EI CAROLINE candy ribbon edged bowl	80.
G	EI BEADS bowl	45.

\*\*\*\*\*

DARLENE YOHE, P.O. BOX 343, STUTTGART, AR 72160  
phone: 501-673-3437

P	EI GRAPE & CABLE covered butter	185.
P	EI ACORN BURRS covered butter	195.
IB	EI GRAPE ARBOR tumbler, tiny nick under base	80.
W	EI GRAPE ARBOR tumbler	120.
PM	EI PEACOCK @ FOUNTAIN tumbler	22.
P	SI GRAPE & CABLE hatpin holder	140.
P	EI SPRINGTIME butter lid	85.
A	EI GRAPE & CABLE punch cups, have four, each	22.
B	EI LEAF & BEADS rosebowl	80.
P	EI WISHBONE lily for epergne	45.

\*\*\*\*\*

MICHAEL J. BASEY, 4315 ADAMS, KANSAS CITY, KS 66103  
phone anytime: 913-432-2460

P	EI DIAMOND LACE 7 piece waterset	500.
SM	EI DIAMOND RING bowl	35.
PO	EI STIPPLED FLOWER bowl	45.
PO	EI STIPPLED FLOWER tri-cornered bowl	45.
PO	EI SKI STAR 11" bowl	90.
PO	EI LEAF RAY nappy, small flake on base	20.
PO	EI SWIRL vase	38.

S.A.S.E. FOR COMPLETE LIST

\*\*\*\*\*

HAROLD L. FOURTNEY, 3710 WYANDOTTE, APT. 5, KANSAS CITY, MO 64111  
phone after 5PM weekdays, anytime weekends: 816-531-6197

G	GI GRAPE & CABLE spooner, N, little rough on thumbprints	55.
G	EI SMOOTH RAYS 10" <u>very flat</u> bowl, beautiful iridescence	35.
LAV	EI SMOOTH RAYS 10" <u>very flat</u> ruffled bowl, tiny flake, super	60.
P	EI DIAMOND LACE large bowl, fabulous iridescence	60.
IB	GI HEARTS & FLOWERS bowl, small flake on outside rim	65.
AQUA	EI ACORN 7 1/2" ice cream shaped bowl, marigold overlay	80.
M	EI SINGING BIRDS 6 piece waterset, slight damage, call	260.
M	EI PEACOCK @ FOUNTAIN punch bowl & base, very sm. flake base	200.

\*\*\*\*\*

BILL EDWARDS, 423 NORTH MAIN, RUSHVILLE, IN 46713  
phone: 317-932-4606

**MILLERSBURG CARNIVAL FOR SALE**  
PLEASE CALL BETWEEN 5-8PM OR WRITE

\*\*\*\*\*

JACK & LIZ WILSON, 3926 N. KEELER, CHICAGO, IL 60641  
phone: 312-282-9553

B	EI GRAPE & CABLE banded banana bowl, minor chip inside foot	250.
B	EI GRAPE & CABLE orange bowl	300.
IG	EI GRAPE & CABLE banana bowl, very minor chip on outside edge	250.
M	GI STAR MEDALLION punch cups, have 5, each \$15, all for...	50.
G	GI FLUTE PUNCH cups, have 5, each \$15, all for...	50.
A	EI MILLERSBURG FRUIT BASKET	550.
G	EI MSBG PEACOCK 7 1/2" bowl, same size as Courthouse, pinhead	275.

\*\*\*\*\*

HARM WESTERHUIS, R.R. 1, BOX 31, PLATTE, SD 57369  
phone: 605-337-3631

P EI WREATHED CHERRY water pitcher, 3 tumblers (2 w. tiny chips) 325.

NOTICE: WOULD THEY LADY WHO CALLED US ON NOV. 1 PLEASE CALL BACK, THERE WAS A MIX-UP, WE STILL HAVE THE ACORN BURRS PUNCH SET.

\*\*\*\*\*

AL RETTKE, 14226 EAST 143RD LANE, BURNSVILLE, MN 55337  
phone: 612-432-7489

AO	EI LEAF & BEADS rosebowl	225.
AO	EI DRAPERY rosebowl	185.
G	EI ORANGE TREE ice cream shaped bowl, superior iridescence	77.50
EB	EI PEACOCKS ON FENCE ruffled bowl, flake	85.
W	EI POPPY relish, tiny chips on collar, tough to find	90.

**WANTED**

LYNN LEWIS, 619 COLUMBIA CENTER, KENNEWICK, WA 99336

Buying UNCOMMON pieces of DAMAGED or BADLY DAMAGED carnival glass in uncommon shapes, colors and sizes. MUST BE VERY REASONABLY PRICED.

All letters gratefully answered.

\*\*\*\*\*

OTHE OWLSLEY, 409 TRUMAN, CLINTON, MO 64735  
phone: 816-885-2128

G EI WREATH OF ROSES punch bowl base  
G EI WREATH OF ROSES with Persian Medallion interior punch cups

\*\*\*\*\*

TED SHEIBLEY, 304A HILLCREST DRIVE, NEW CUMBERLAND, PA 17070  
phone: 717-938-6417

G MILLERSBURG CHERRY butterdish, sugar bowl, and spooner  
G or M TOWN PUMP

\*\*\*\*\*

JOS. MELLO, 535 FISH ROAD, TIVERTON, RI 02878  
phone: 401-624-2174

M MANY FRUITS punch cups, need 6  
A ACORN BURRS base to punch bowl  
G or M ACORN BURRS punch bowl (top only)  
P IMPERIAL GRAPE punch cups, need 4  
A lid for powder jar  
G BUTTERFLY & FERN tumblers, need 2  
M HORSES HEADS plate

\*\*\*\*\*

A.O. CROMER, 1150 N. TOPEKA AVE., WICHITA, KS 67214  
phone: 316-262-1775

A or G TROUT & FLY plate

\*\*\*\*\*

OMER SWEENEY, 28 ESMOND ROAD, ESMOND, RI 02917  
phone: 401-231-4108

P VINTAGE powder jar top  
M VINTAGE powder jar bottom  
P, G, M GRAPE & CABLE powder jar bottoms  
P SPRINGTIME sugar top  
B PEACOCK AT THE FOUNTAIN or SINGING BIRDS base to butter dish  
P BEADED SHELL sugar bottom (or sell top)

\*\*\*\*\*

A.A. FOGLEMAN, 101 CEDARWOOD DRIVE, JAMESTOWN, NC 27282  
phone: 919-454-3267

P BROKEN ARCHES base for punch bowl  
P BROKEN ARCHES punch cups

\*\*\*\*\*

KATHY RIEDEL, 1138 FABRIQUE, WICHITA, KS 67218  
phone: 316-683-1375

M OCTAGON decanter stopper  
\*\*ANY\*\* GRAPE & CABLE stippled plates

\*\*\*\*\*

GEORGE S. BOND, 1406 N. FERNCREEK AVE., ORLANDO, FL 32803  
phone after 5:30: 305-894-4393

P EI GRAPE & CABLE sweetmeat top  
A EI MILLERSBURG CHERRY top for butter dish  
A EI MILLERSBURG CHERRY bottom for sugar  
M EI ORANGE TREE bottom for butter dish  
W EI ORANGE TREE top for butter dish

\*\*\*\*\*

CAROLYN BROOKS, 10803 SHINGLE OAK ROAD, RICHMOND, VA 23237  
phone: 804-748-5169

Iridized Milk Glass with gold trim GRAPE & GOTHIC ARCHES creamer  
sugar  
spooner

\*\*\*\*\*

BARBARA NELSON, RFD 4, BOX 155, LACONIA, NH 03246  
phone: 603-293-7246

\*\*ANY\*\* PASTEL FENTON OPEN EDGE BASKETS, plain or Blackberry interior  
P,G,B ACANTHUS bowls

\*\*\*\*\*

JAMES & CINDY HENDRICKSON, RT 1 BOX 133, KILDARE, OK 74642  
phone evenings: 405-762-6327

M BUTTERFLY & BERRY creamer

\*\*\*\*\*

BOB & KAY GEISINGER, 296 BRADFORD DRIVE, CANFIELD, OH 44406  
phone: 216-533-6106

M WISHBONE epergne-lily only  
P or A WISHBONE epergne-base only

\*\*\*\*\*

JOHN STEWART, 99 ASTER CIRCLE, WEYMOUTH, MA 02188  
phone anytime: 617-337-1304

W or AQUA FLUTE, FLUTE & CANE, OCTAGON or CANE wine glasses  
AQUA or AD WINE & ROSES wine glasses  
\*\*ANY\*\* FOUR-SEVENTY-FOUR or STAR & FILE cordials  
SMOKEY IMPERIAL GRAPE wine set

\*\*\*\*\*

SHIRLEY G. HILL, RTE 8 BOX 413, REIDSVILLE, NC 27230  
phone evenings: 342-3096

M WIDE PANEL epergne-lillies only

CARL T. BOOKER, 944 W. PINE STREET, GRIFFITH, IN 46319  
phone: 219-924-2910

\*\*ANY\*\* DOUBLE LOOP cream pitcher

\*\*\*\*\*

GARTH IRBY, 4136 FILLMORE, ST. LOUIS, MO 63116  
phone after 6PM: 314-752-0160

\*\*ANY\*\* LION PIECES

\*\*\*\*\*

DICK HATSCHER, BOX 261 WALNUT HILL ROAD, BETHEL, CN 06801  
phone: 203-743-1468

\*\*ANY\*\* HEARTS & FLOWERS COMPOTES

\*\*\*\*\*

HOWARD & MARION ROBINSON, 8 STILLWELL ST., BARRINGTON, MA 01230  
phone: 413-528-1359

M EI GRAPE & CABLE cookie jar lid  
G EI SINGING BIRDS water pitcher  
A EI GRAPE & CABLE powder jar cover  
A EI DIAMOND LACE tumblers, need four  
M EI GOLDEN HARVEST decanter stopper  
M EI IMPERIAL GRAPE decanter stopper, need two

\*\*\*\*\*

IVAN L. MITCHELL, 215 S. GRAND, HOUSTON, MO 65483  
phone days: 417-967-2140, evenings: 417-967-3437

G FEATHER & HEART tumblers, need up to 5  
A INVERTED THISTLE tumbler  
P FASHION tumbler  
P DAHLIA tumbler  
M INVERTED STRAWBERRY tumblers, need up to 2  
P FIELD FLOWER tumbler