

H. O. A. C. G. A.
 BULLETIN SECRETARY
 AL RETTKE
 14226 East 143rd Lane
 Burnsville, MN 55337

FIRST CLASS



December	1983					
S	M	T	W	T	F	S
4	5	6	7	8	9	10
11	12	13	14	15	16	17
18	19	20	21	22	23	24
25	26	27	28	29	30	31

INSIDE THIS ISSUE

VERY IMPORTANT.....	page 2
EXHIBITION NEWS.....	3
MORE CURVED STAR.....	9
AQUA OPALESCENT'S ORIGINS and LEA & VARIENT.....	11
"MYSTERY" PEACOCK EXPOSED.....	13
TUMBLER SERIES.....	17
COMING EVENTS.....	19
RARITY REPORT.....	20
FOUR FLOWERS.....	24
CARNIVAL CALENDAR.....	25
FOR SALE GLASS.....	26-34
GLASS WANTED.....	35-38

H A P P Y U H O L I D A Y S



Heart of America

Carnival Glass Association, INC.

MEMBERSHIP JUNE TO JUNE
\$20.00 PER COUPLE OR SINGLE

PUBLISHED THE 15TH
OF EACH MONTH

PRESIDENT
GEORGE O. MCGREW, JR.
6800 WOODWARD
OVERLAND PARK, KS 66204
913-262-8822

VICE-PRESIDENT
MICHAEL BASEY
4315 ADAMS
KANSAS CITY, KS 66103
913-432-2460

TREASURER
ELIZABETH BOLLES
5204 CATALINA
SHAWNEE MISSION, KS, 66205
913-432-5438

SECRETARY
DIANE TREFF
13646 LEAVENWORTH ROAD
KANSAS CITY, KS 66109
913-721-2917

BULLETIN SECRETARY
AL RETTKE
14226 EAST 143RD LANE
BURNSVILLE, MN 55337
612-432-7489

ALL MONETARY FIGURES QUOTED ARE IN U.S. DOLLARS
PLEASE MAKE CHECKS FOR DUES PAYABLE TO H.O.A.C.G.A.
AND SEND THEM TO THE SECRETARY AS LISTED ABOVE

VERY IMPORTANT NEWS

Beginning on the next page is a very important piece of news.

Not many American collectors are aware of the full impact of what Ray Notley is doing in England. For the past two years, he has been planning, lecturing, documenting and working on a 600 piece exhibit. His exhibition entitled "Carnival Glass - Poor Man's Tiffany" will be on display in about a dozen major and/or important museums in England throughout 1984.

At first glance, it may not appear that this will affect us American collectors, but it will. Other than the Fenton Art Glass Company's private museum, HOW MANY AMERICAN MUSEUMS HAVE EVER HAD ANY CARNIVAL GLASS EXHIBIT? There are a couple museums who have been given collections here in the US but they are still packed away and there is no major museum here that has a permanent exhibit that I am aware of. The importance of this exhibition will slowly filter over to the US museums when they hear from the English curators what kind of record attendance such an event can generate. The interest in Carnival in the English museum "community" is increasing every day and this means that the image of Carnival will be improved beyond measure.

Look for the major auction houses like Sotheby and Christies to soon pay a great deal of attention to this bit of Americana they have neglected for so long. Prices will go up as these major houses fight for top flight collections and our regular Carnival auctioneers will have some stiff competition.

This exhibition of Ray's will be the most important event in Carnival Glass history since Mrs. Hartung wrote the pattern book series. What is happening in England will bring more "legitimacy" to Carnival Glass collecting than any other single event.

I applaude Ray for what he has done and look forward to someday soon seeing US museums displaying Carnival as it should have been done long ago.

AL RETTKE

PICTURES FROM AN EXHIBITION
by Ray Notley

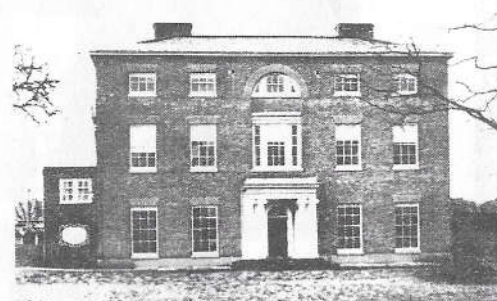
The opening of the tour of the Carnival Glass Exhibition, subtitled Poorman's Tiffany opened at an invitation only preview on Friday, August 12th. The upper galleries of Nottingham Castle Museum were all opened up for this as over 250 people turned up on one of the hottest August evenings that anyone could remember. Sherry to cheer the event was provided with the compliments of Harvey's of Bristol and the beautiful Red Room lined with the gold framed paintings of Bonington was used. The Long Gallery was in use as a promenade area to take the largest crowd that has ever turned up for a summer opening. The Lady Chairman of the Leisure Services Committee was there to welcome all arrivals on behalf of the City of Nottingham. She formally opened the Carnival Glass show and asked me to say a few words. This I did, thanking everyone who had worked so hard over the previous two years of planning. I was also very grateful for the team of a dozen or so who had worked for the week previous to the show. I had worked with them in a closed gallery with temperatures up to the 100 degree mark at times. There is no air conditioning. The music from the audio visual display was a little loud perhaps that first evening and the heat was too much for some. As the latter was due to an act of God and the former to the enthusiasm of one of the Security Guards, who was very partial to Charmaine as rendered on a cinema organ, there was little I could do to stop the general excitement and bustle. It was a wonderful evening which finished with me doing my third radio talk of the week on th Late Night Live Show. Many members of the Carnival Glass Society were there to give me moral support. Some were from Northern Ireland and North Scotland and Marion Quintin-Baxendale had made the long journey from Cornwall. It was lovely to see everyone and the only Carnival personality missing was Angela Hallam who had been unable to accept the invitation.

The next day was the Open Day and AGM (Annual General Meeting) of the Carnival Glass Society (UK) which started at 10:30 with a very well attended lecture given by me. This was the first lecture in Europe given in a Museum on the subject of Carnival Glass. Several Museum officials, including the Senior Keeper of Fine and Applied Arts, came in on their day off, especially to hear this talk. We then had a display of books and glass in an adjacent room and Marion Quintin-Baxendale popped in to help promote sales of her book. There was some nice glass for sale and this feature will be expanded next year. Our first AGM took place after lunch and was very well attended with the exception of one or two who were so busy taking notes in the Exhibition gallery that the meeting slipped their mind!! The public afternoon event was a panel discussion of glass brought in for review and this too was very popular and well attended. There was a farewell drink in a local bar and many stayed to enjoy a meal in the Carvery of the local hotel. I was so tired and weary after all the work that I simply went off with the Exhibition Organiser Michaela Butter, and together with my fellow collector, ate a simple meal of scrambled eggs

which was almost more than we could manage. We then had the 2 1/2 hour drive home. This was how the first Museum sponsored tour of Carnival Glass began. The old home of the Dukes of Newcastle built on the site of the old Castle of the Sheriff of Nottingham was the historic setting for the Exhibition and Robin Hood and Maid Marian were surely there in spirit. It was a marvellous beginning for the new Carnival Glass Society with its democratic first AGM placed in a building so associated with the battle for justice for the common man. This wonderful and splendid and historic setting.

An astonishing number of visitors descended on the Castle during the six week run and on two Saturday afternoons there was a line to get in. Notices were put up in the gallery which read PLEASE TREAD SOFTLY!!! Many people came several times bringing different friends and relatives. There was a general feeling of warmth and the glass itself thrilled so many people. Complete strangers actually talked to each other in front of the display cases. This is unheard of in England where strangers only speak in time of war or perhaps to enquire where they can get a nice cup of tea!! One of the most popular shows ever in Nottingham which is right in the heart of England.

BROADFIELD HOUSE GLASS MUSEUM DUDLEY



Broadfield House

An early 19th century listed building is the new home for the Brierley Hill and Stourbridge Glass collections. Opened in April 1980 by H.R.H. Princess Michael of Kent, it won the award for Best Small Museum of 1981. Glassblowing and engraving take place in studios at the rear of the museum.

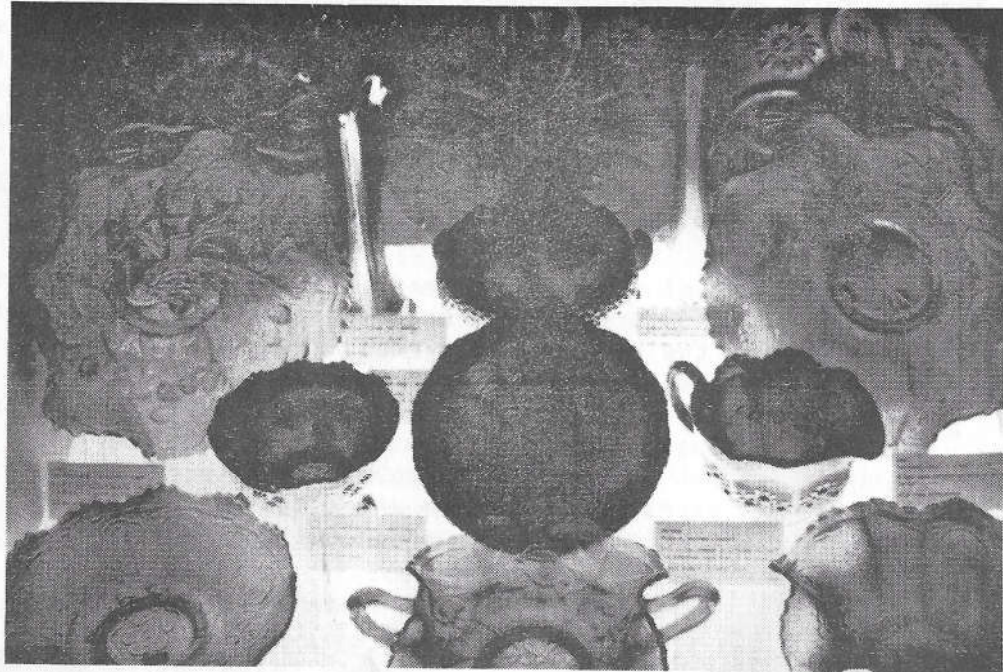


John Northwood I, 1836-1902

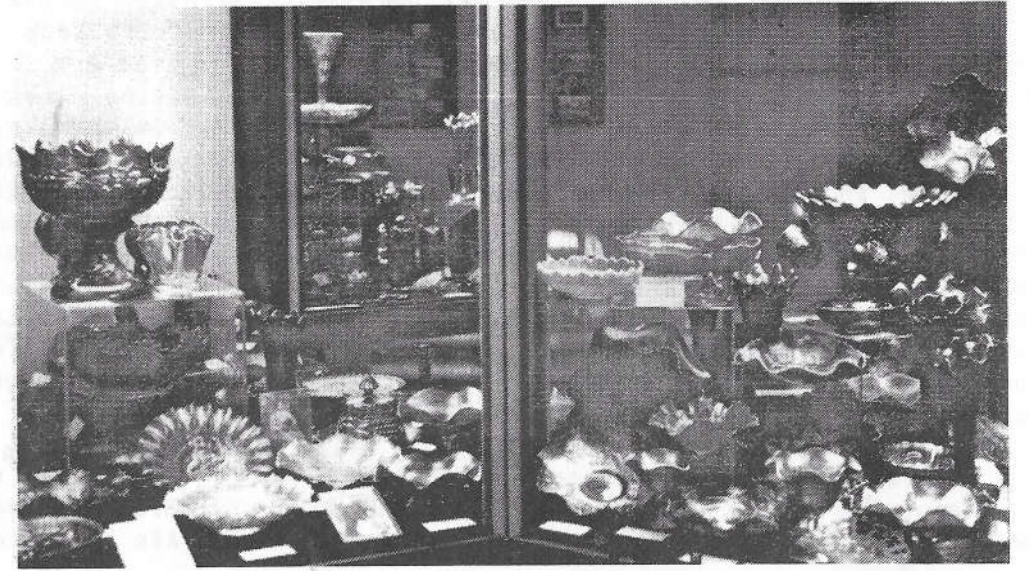
One of the greatest local Glassmakers he pioneered many techniques and styles and eventually became Artistic Director at Stevens and Williams. His famous cameo version of the Portland Vase sparked off the fashion for cameo glass.

The Exhibition then moved west to the Broadfield House Glass Museum at Kingswinford, near Stourbridge. Harry Northwood was born here, only a stones throw away from the Museum which recently won an award as the best Museum of the Year. The first floor is crammed with the glass made under the direction of his father, John Northwood I and for the first time, the glass of father and son were shown together. This was a historic and rather moving event. 'Arry's glass has come 'ome....this was the general local reaction. This is the heart of the English Glassmaking region and firms like Webbs, Royal Brierley Crystal (the Queen's glass suppliers and the new name for Stevens & Williams), Stuart Crystal etc are literally, just down the road. Most of the workers and staff dropped in to see the

Photos from "POORMAN'S TIFFANY", courtesy of Ray Notley.



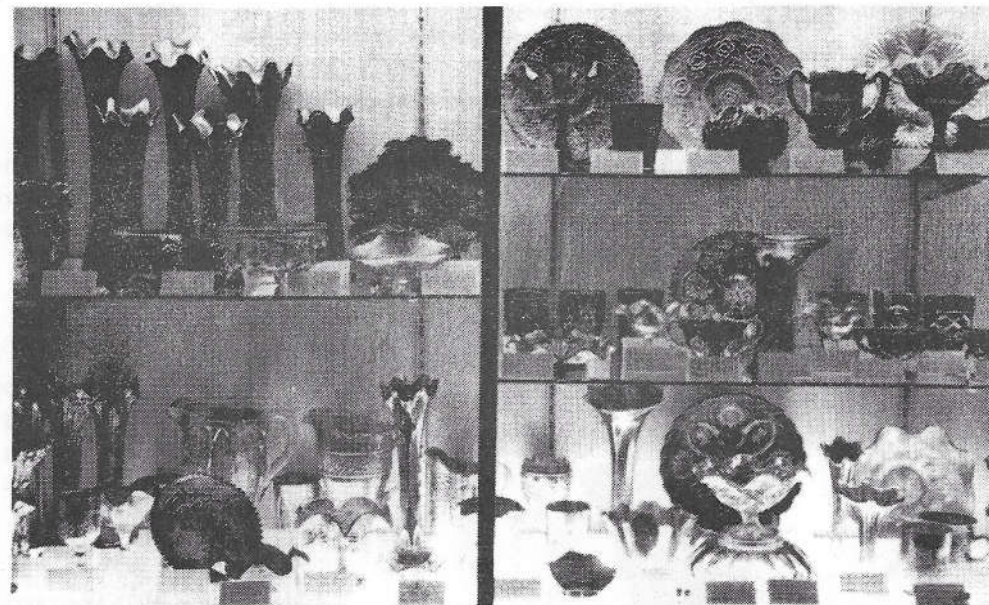
Photos from "POORMAN'S TIFFANY", courtesy of Ray Notley.



special display of 'Arry's glass and were all fascinated by the rest of the Carnival Exhibition. Students from the Stourbridge College (Glassmaking) came to study, sketch and make notes. These are the future glassmakers and designers and this vibrant and exciting glass was the subject of much discussion and comment. The Exhibition there opened on October 1st and was my contribution to Carnival Glass week of 1983 as was my article in the nationally circulated Collectors World magazine which had two large excellent colour illustrations as well as black and white ones. To celebrate this historic and triumphant return of Harry Northwood Carnival we presented Broadfield House with three pieces of his glass which are now in the permanent collection. These are the butterscotch Three Fruit Bowl with splendid iridescence; a green Grape and Cable Hatpin Holder and an exceptionally well iridised purple bronze Acorn Burrs tumbler.

We also gave the Castle Museum the Northwood Peacock bowl which was used for the full colour poster etc., as well as an electric blue Fruits and Flowers bonbon and a very elegant cobalt blue Thin Rib vase by Fenton.

People are enjoying the show, they are learning about Carnival from it and the image of Carnival is being enhanced in a sensible, dignified and non commercial manner that will serve it well. You have to search very hard indeed to find out who all the glass on show belongs to. The star of this long planned spectacular is the glass itself. I am sending Al pictures as they become available of the show as it appears in the various museums. There is video material available but I cannot send it anywhere very much as our TV system and recording standards are not compatible with the USA and it is extremely expensive to have such tape transferred to NSCT standard. If any of you are in Europe this year then please let me know and I will tell you where the show can be found through to the Fall of 1984. There are gaps of several weeks between Museums as packing and transportation takes time and care. Thank goodness the Museums pay for all this and the insurance, the premiums for which are fantastic. I am giving up all my spare time to supervising the arrangement of the glass so I do see it regularly. We still have a lot of glass at home and we are still finding Carnival. Recent acquisitions include a red Peacock and Grape bowl, an aqua opal Three Fruits plate, a Two Flowers marigold plate, a complete trinket (dressing table) set from Czechoslovakia and all sorts of odds and ends, all unlisted and which I'm tucking away until I can document them properly. I wish someone would invent the 36 hour day!!!! Next stop is Wales where the first discussion ever in the Welsh language on the subject of Carnival is planned!! This is one language that baffles me completely but I have learned to say "How are you" and "Thank you very much". However, my attempts to translate "Do you know where I can find lots of good Carnival cheap?" have failed. More news soon.



=====

CURVED STAR POSTSCRIPT

=====

It will help to have an almost complete documentation of this interesting Swedish glass and Don Moore's item last month showed several interesting items with comments that made me roar with laughter. Don's sense of humour is very English and indeed universal.



The size of the epergne is not obvious unless you see it with something else for comparison. You see it here with two of the celery vases and one notices too the fact that the bowl of this example of the epergne is crimped and rather elegant. This is but one part of the most extensive range of Carnival tableware produced outside the USA and this makes CURVED STAR quite unique. My discovery of the adverts showing reversed sugars and bowls on them seems to have got a little out of hand. The bowl in CURVED STAR that fits the reversed sugar bowl is in fact the large crimped bowl you see here as part of the epergne, (obviously without the central hole). The salad bowl shown on reversed sugar last month is feasible I suppose but the combination as suggested by the distributors was as outlined above.



My other picture shows the stemmed sugar (right way up), the stemmed creamer, the compote, and square spoon dish in the foreground. There is often a great deal of confusion about stemmed sugars of European origin and one of my Sowerby articles does explain this in detail. They are not compotes. You can compare the stemmed sugar in this photo with the true compote (compote). All these items are currently touring the UK as part of the "Poorman's Tiffany" show together with other CURVED STAR items not shown here such as the Flower Bowl on original metalwork (this item is shown in Bill Edwards Encyclopedia). All these items were made by the Eda glassworks, which as far as I know, is the only factory to have a town actually called after it. The town of Eda Glasbruks is quite separate from the town of Eda itself and is just across the border from the Norwegian glasstown of Magnor.

I hope you don't get too confused with compotes and compotes. American standard usage has settled for compote whilst we stick to comport in Europe!!!!

RAY NOTLEY
London, England

**SOWERBY CARNIVAL GLASS
LEA AND VARIANT**

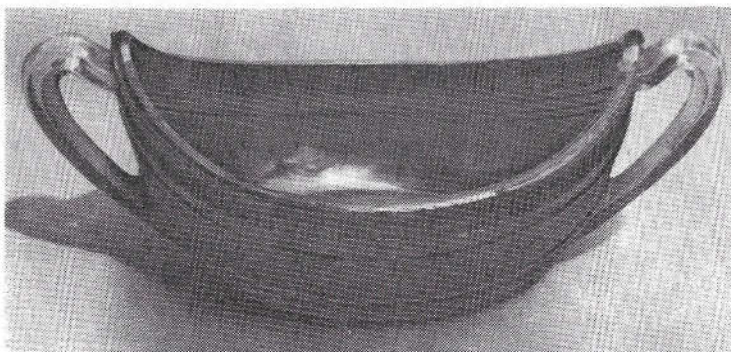
Hartung Volume 5, page 43 & Volume 8, page 40
Sowerby pattern numbers 1493 (sugar and creamer), 1315 (pickle dish)

I must apologise for the long gap between this episode of the Sowerby Saga and the last one. I have been rather busy but my educational material now continues.

Dealing with the Carnival Glass made by Sowerby means a real dip into the archives. Of all the firms who made Carnival Glass, Sowerby are undoubtedly the aristocrats. Various dates of the founding of the firm have been printed but they themselves counted from 1760 and indeed they held their 200th anniversary dinner in 1960 for which I have the Souvenir Menu and Booklet. They made only press moulded glass with the exception of a range of free blown Venetian glass in the 1880's and a short lived range of cranberry glass in 1905. They were the firm that introduced the handle in mould which replaced the earlier stuck, applied handles of early pressed creamers etc. A huge variety of colours was produced by the works which exported widely with huge success through to the turn of the century.

Among the colours they used was a lovely marbled opaque blue and white glass. This is called "slag" sometimes but it is correctly called SORBINI in imitation of the Italian marble of that name. I mention this because at HOACGA Convention I was quite startled when Tom Burns produced a Northwood Peacocks bowl in this Sorbini glass with added iridescence. Harry's father, John Northwood I was a magpie collector of glass formulae and this one, and many others, found their way to the US via Harry.

Aqua opalescent glass is the exact colour of the Victorian glass made in the UK by Sowerby and particularly by a smaller firm called Burtles and Tate. This was called SEA-FOAM and suits the colour very well when you think about it. It was not iridised of course. It was Harry who gilded the lily!



However we see here three items made by Sowerby at their Gateshead factory, in the North of England, in the late 1920's. The oldest is the pickle dish which was made with a mould that was



cut in 1881 making its first appearance in a catalogue of 'fancy goods' issued by the Sowerby factory in 1882. It is depicted on one of the pages devoted to 'vases, spills, and baskets' and was originally a novelty basket. This would have been for short stemmed flowers etc. Nowhere does it make an appearance in the archives as a pickle dish but I am not adverse to this name. Sowerby seemed to have taken a fancy to the pattern for by 1885 the creamer and sugar make an appearance together with various other matching items of table ware. These were all listed under pattern number 1493 with the 'pickle dish' remaining under its old number of 1315. Interestingly enough the original items have a collar base and the substitution of the footed base took place this century. This is one Sowerby mould that is still in existence and the base and hinged body of the moulds are of different metals. The creamer and the sugar have a meandering petal interior design which also turns up on an unusual and interesting item that I will be featuring next month.

The sugar and creamer are often found with a tilt to one side or with black carbon burnt into the extremities of the feet or base. This is due to simple carelessness in the Sowerby factory which was working under the strain of labour disputes and a general trade depression. Placing a moulded glass object into the cooling lehr before it has even slightly cooled will produce deformity and general dirt and mess in moulds will be moulded into the finished glass. Sowerby in 1926 was not the same factory as 1886 when the product and pride of workmanship was much higher. What is particularly interesting in the LEA pattern is the use of stippling which was used a great deal by the US carnival makers as a splendid way of enhancing the surface iridescence. Many US carnival designs exist with a plain and a stippled version with the stippling being added to an existing mould in order to make it more glamorous. The LEA items usually have a very nice good golden marigold finish and the curious distortions are certainly a talking point. The men who cut the moulds for these items were alive during the American Civil War and it was in 1881 that President Garfield was assassinated, a mere 16 weeks after Czar Alexander II. As these moulds were being made, the Atchison, Topeka and Santa Fe railroad was linked up with the Southern Pacific Railroad and the first direct train from Kansas City left on March 17 for California. This was also the year of the shootout at the OK Corral!!!! So when you see these humble little pieces, think kindly of those unknown craftsmen who were quietly chipping away making the moulds whilst America itself was still being moulded. **EXCITING TIMES INDEED!!!**

"MYSTERY" PEACOCK EXPOSED

by DON MOORE

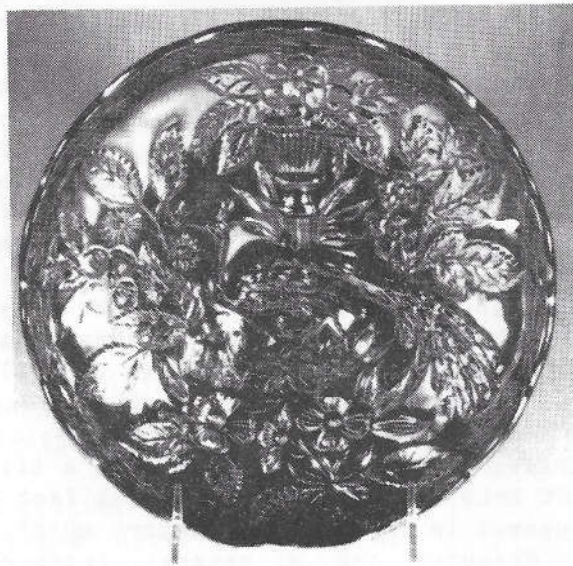


PHOTO 1 - "MYSTERY" PEACOCK

The 9" Peacock & Urn bowl shown in photo #1 has posed a bit of a mystery over the years as to its maker. Some have felt it was a Fenton product while others have leaned toward Millersburg or Northwood. It has consequently been called the "mystery" Peacock. This bowl is usually ruffled but the one shown here in amethyst is ice cream bowl shaped. A rare blue one in this same shape turned up last year and sold at auction in November 1982 for \$600. It is also found in green and marigold but all that I have seen, with these two exceptions, have been ruffled.

Part of the confusion here has been the fact this "mystery" bowl is smaller than the 10" Millersburg Peacock (the "no bee" one) or the 10" Millersburg Peacock & Urn (has a bee). It is about the same size as the Fenton Peacock & Urn pattern but has many differences and does not carry the Fenton Bearded Berry as an exterior pattern.

This matter has been confused still more by the smaller Millersburg Peacock Variant as shown in photo #2. It is smaller (7 1/2") and is the same size as the Millersburg Courthouse bowl. The urn has less detail and has no beading. There is a bee, in this version of this pattern. This piece is rare and is sometimes referred to as the "shotgun" Millersburg Peacock.

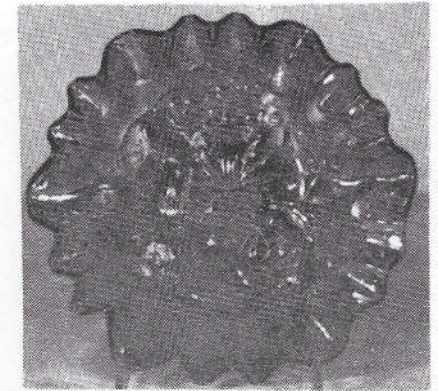


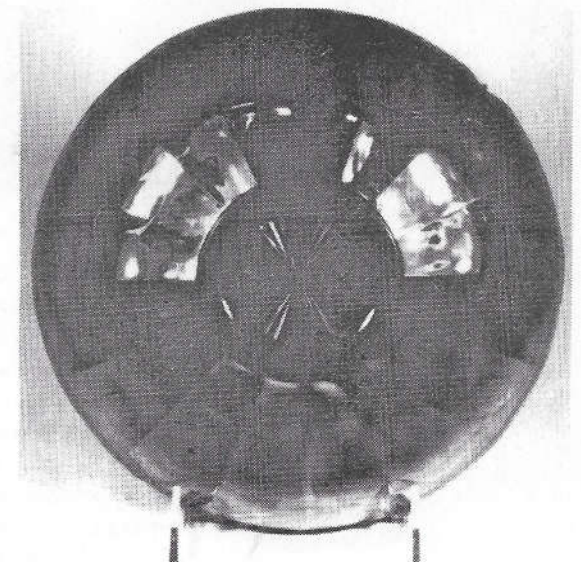
PHOTO 2 "SHOTGUN" PEACOCK

Along with all these variations of the Peacock & Urn comes the Northwood version as shown in photo #3. It is normally found as an ice cream set but now & then the master ice cream bowl is flattened into a chop plate. A couple of the small individual ice cream bowls have also turned up in the plate shape.



PHOTO 3 NORTHWOOD PEACOCK & URN

Well so much for the confusion surrounding this Peacock & Urn pattern. Let's look now at the evidence which leaves little doubt as to the identity of the maker of this "mystery" Peacock. Shown in photo #4 is the reverse side of this piece. It carries the typical Millersburg wide panel with a many rayed base. This follows the general practice on any number of Millersburg pieces. Shown here is a series of patterns in 9" bowls where this is true and where the shapes in general are almost identical to the "mystery" Peacock.



BACK OF "MYSTERY" PEACOCK

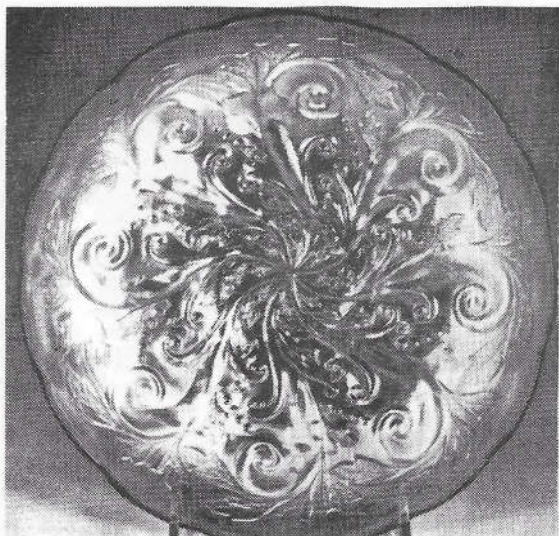


PHOTO 5 9" SEAWEED

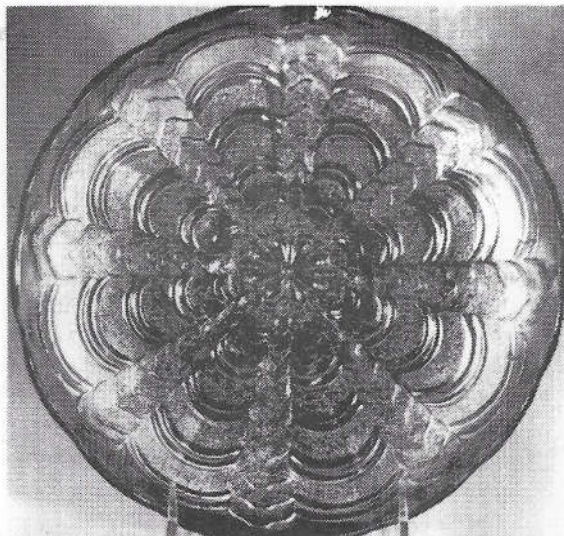


PHOTO 6 9" ROSALIND

The usual Seaweed & Rosalind bowls are 10" in diameter and are almost always ruffled. I have used the rare 9" ice cream shaped bowls in these patterns (photos 5 & 6) in this instance to help establish the identity of the "mystery" Peacock. These are established Millersburg patterns.

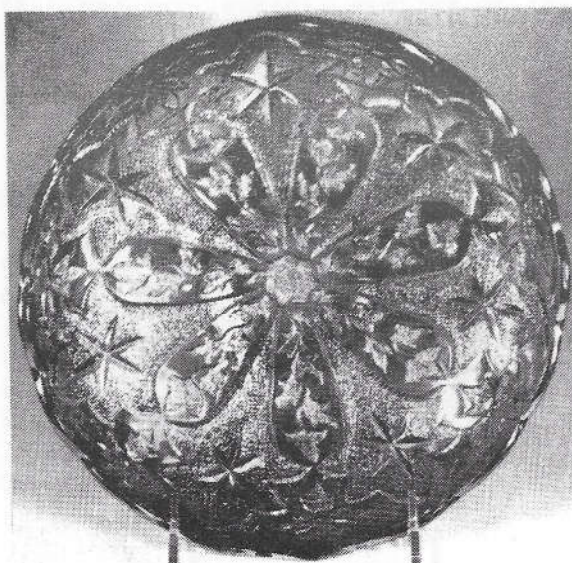


PHOTO 7 9" LITTLE STARS

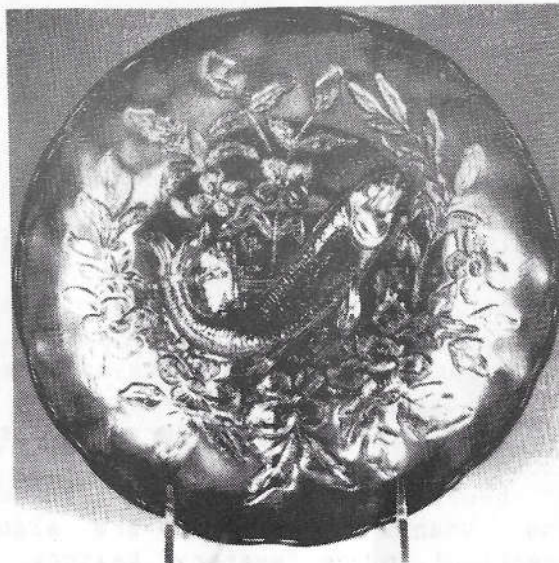
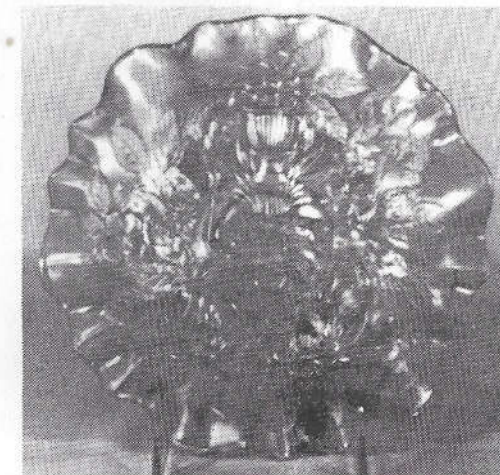


PHOTO 8 TROUT & FLY

The same is true of the Little Stars bowl shown in photo 7. It is seldom seen in this 9" size. It is usually found in a 7" ruffled bowl & very rarely in a large 10" ruffled bowl. Millersburg is one of the few companies that often used the same pattern for bowls of various sizes. The trout & Fly (photo 8), however, is found only in a 9" ruffled or ice cream bowl shape (as shown).

If you still have doubts as to the "mystery" Peacock, photo 9 shows this piece in a marigold ruffled bowl. I call your attention to the nature of these ruffles. There are two smaller ones followed by a large one. This is a typical Millersburg scheme and is followed on any number of known Millersburg patterns, including Fleur de Lys, Courthouse, Grape Wreath, Holly Whirl, Zig Zag and the Peacock Variet previously shown in photo 2.



After working so hard to prove to you that this piece was made by Millersburg, may I confess that I like the "mystery" tag and will in all likelihood continue to use that label when referring to this pattern.

DON MOORE

=====
CARNIVAL GLASS MONTH DISPLAY
=====

We are happy to report that we have received word that IRIS & CHESTER HERRING had a nice display of Carnival in the front window of their florist shop in downtown Bonham, Texas. The report is it attracted a lot of local attention.

We are glad to see people displaying their glass, were there any other members who had a display?

=====

EDUCATIONAL TUMBLER SERIES

=====

by John & Lucile Britt



LATTICE & GRAPE - A COMMON, YET VERY ARTISTIC TUMBLER

"Lattice & Grape" tumblers are shown above in marigold, cobalt blue and white. They are quite easily found in both the marigold and blue colors. White tumblers in this pattern, however, are really quite scarce and are rather hard to find. The "Lattice & Grape" water pitcher in white is even harder to find than the matching white tumblers and is considered to be quite rare. The tall graceful tankard adds a great deal to the beauty of this fine water set. I really have never considered the "Lattice & Grape" tankard in cobalt blue as being rare, but one of these did sell for one thousand dollars at an auction in Bath, New York last summer. This particular tankard did have super color and irridescence, however. This record price for the piece leads me to believe that the cobalt blue "Lattice & Grape" tankard is probably a little more difficult to find than I had previously thought. Mr. Richard Owens, in his well written tumbler book, reports tumblers as being also made in the peach color. One of these peach "Lattice & Grape" tumblers was part of the once large and well known Preheim tumbler collections of California. We were priviledged to purchase this tumbler from that collection some years ago. While being of a true peachy like color, these peach tumblers do not have any opalescence whatsoever.



The "Lattice & Grape" pattern was made by the Fenton Art Glass Company of Williamstown, West Virginia. It must have been one of their more popular lines as we still find a good many of these water sets in existance today, especially in marigold. In my opinion, many of our carnival glass collectors tend to down grade such pieces as the marigold "Lattice & Grape" water set simply because they are so common. We really should refrain from this type of action, however because carnival glass pieces do not actually need to be rare in order to be beautiful or desirable. While I agree that the marigold "Lattice & Grape" water set can easily be found, it is indeed a very fine and charming set.

The pattern is very artistic and the workmanship of the design is outstanding.

Remember that housewives chose these fine marigold water sets back in the 1915 era because they liked them. They surely must have been popular and big favorites for home use at that time. The fact that they were so popular back in the teens is the big reason we see so many of them around today. Do not hesitate to purchase these fine marigold sets just because they are not difficult to find. The "Lattice & Grape" water set in any color will add a lot of charm and color to your collection and you can be justly proud of it.

Tumbler collectors will probably want to add examples of all four colors of this pattern to their collections. You might find the white and peach tumblers a little hard to come by, but they can be found with some time and effort spent in searching and traveling. We think that the white "Lattice & Grape" is a "must" for the advanced tumbler collector.

This is #71 in our descriptive tumbler series. We will cover another carnival glass pattern tumbler, yet to be named, in next months H.O.A.C.G.A. bulletin.

JOHN & LUCILE BRITT

=====

COMING EVENTS

=====

I hope everyone had a nice Thanksgiving and that no one ate too much. HA, HA. This has really been a slow month. After last month, I needed a rest. It's hard to believe that this year is almost gone, where did the time go?

COMING EVENTS--NOVEMBER PROGRAM

Dennis Sutton put on our November Program. His subject was Tornado vases and this is what he had to say:

"Some of the most unusual vases in all of Carnival Glass are the TORNADO vases. They were made by the Northwood Glass Company and are marked with a N in a circle on the bottom of the vase. Where many vases vary greatly in height, the TORNADO does not. It comes basically in two sizes; the larger size is 6 1/2" tall with a 3 1/8" base, the smaller ones measure 6" by 2 5/8". While this size difference does not seem to be much, you can really see the difference when the two are next to each other. The vases come both plain and ribbed. The ribbed vase has slanted parallel lines that run around the vase on the outside. The colors known are Marigold, Green, Purple, Ice Blue, Cobalt Blue and a rare White. There is also a TORNADO-Variant that is 7 1/8" tall and has a base identical to the well-known Northwood Corn Vase. A pastel blue Stretch finish whimsy TORNADO vase also exists."

Thanks, Dennis, for putting on a Program and furnishing all of us with your summary.

RECRUIT A NEW MEMBER

The following is a list of new members that came in after my cut off date in the last Bulletin. These members were recruited during National Carnival Glass Month:

NEW MEMBERS

- Carrie & Jerry Domitz, Maple Valley, WA.
- Helen Oulette, Oceanside, CA.
- Noel & C. May Fisk, Merimbula, Australia
- Virgil & Gertrude Radloff, Farmersburg, IA.
- Grahame Wm. Allen Maxworthy & Anne, Sydney, Australia
- M/M Harold D. West, Platte City, MO.

RECRUITED BY

- Gilbert W. Carter
- Antique Trader Ad
- Tom McCrohan
- Diana Treff
- N. Dickinson
- Antique Trader Ad

I would like to take this time to WELCOME these new members and to THANK the people who took the time to recruit a new member during National Carnival Glass Month. We got 27 new members during this month. THANKS TO YOU FOR HELPING OUR CLUB GROW!!!

COMING EVENTS--FUTURE PROGRAMS

December	No Program	No Meeting
January	Robert Grissom	Table Sets
February	ALL MEMBERS	SWAP & SHOP

I would like to take this space to wish all of our members a VERY MERRY CHRISTMAS AND A HAPPY NEW YEAR!! Until next year, be careful and GOOD GLASS HUNTING EVERYONE!!!!

MICHAEL J. BASEY
Vice-President

=====

RARITY REPORT

=====

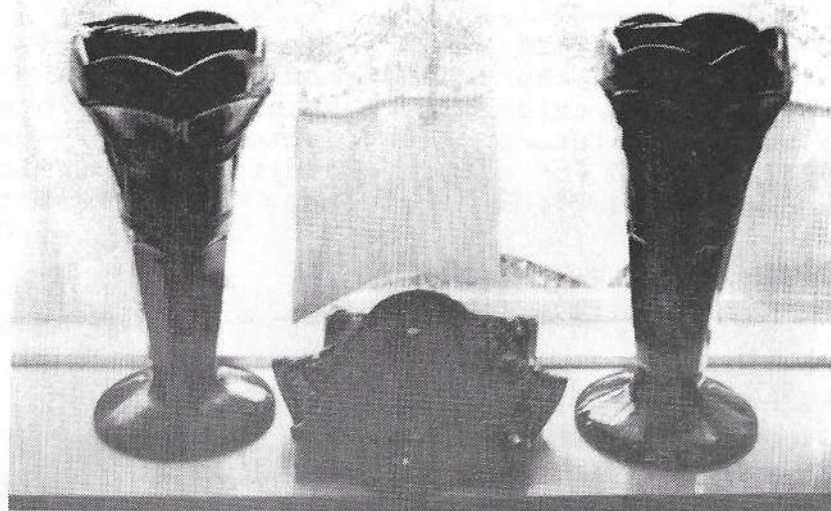
From M/M DON KEMP comes the report of a Daisy Wreath vase in marigold. The vase measures 7" tall and 5" at the top. It appears to have been made from a bowl. DOES ANYONE ELSE HAVE ANY INFO ON THIS??

EVA BACKER from W. Hartford, CT reports finding a 7" Millersburg "Shotgun Peacock" bowl in green at a 40 dealer show. She says the price was right, "...about the price of a Peacock at the Fountain tumbler". (We hope you didn't mean a green tumbler, Eva). Congratulations on getting your bird right before Thanksgiving.

We have heard of two more Celeste Blue Carnival Holly bowls coming to light recently, wish one of them were ours. We did find a Sapphire Blue N Grape & Cable stippled bowl and are tickled with this.

We have heard from a lady who owns the following two pieces and would like some more info from fellow collectors: Vaseline Orange Tree bowl, Smoke center/marigold edge Dragon & Lotus bowl. HAVE YOU HEARD OF EITHER OF THESE? Please let us know and we will publish the results here.

AL & WENDY RETTKE



TWO SOWERBY "CYNTHIA" VASES

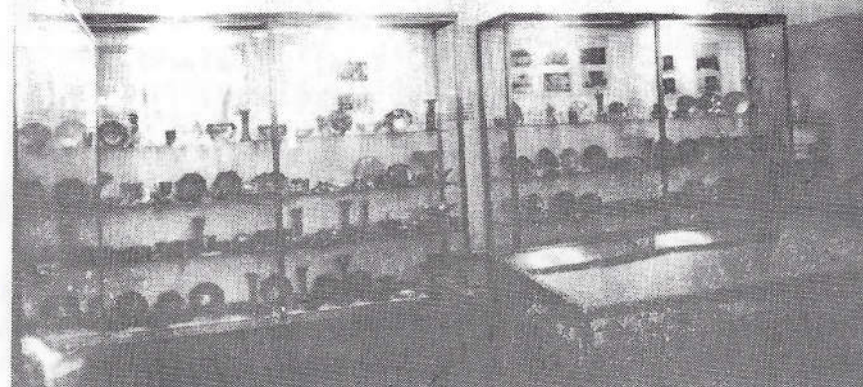
Here are a delightfully rare pair of Carnival Glass vases. They belong to the writer and were recently brought back from Australia where they had been a long-ago wedding present, originally brought out from UK in the 1930's. Their sudden appearance was, amazingly, about coincident with the only other known pair turning up in the United States. Now what are they?

These are Sowerby UK pieces and the pieces in America were identified by William Heacock (of The Glass Collector) when they were taken to him by Cynthia Nagy. Height 9 1/2" tall and the base glass is BLACK. The Sowerby catalogue Number was given by Bill Heacock as # 2437-1/8 vase.

There was also a salad bowl on a plinth (black) in the catalogue, though no known pieces iridised on black base glass has turned up to my knowledge. Pieces have been seen in the Sowerby Rosalin finish, however. The base glass is dense black, no shimmer of deepest amethyst in these.

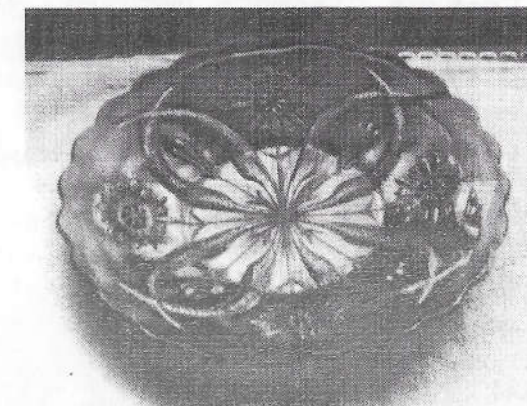
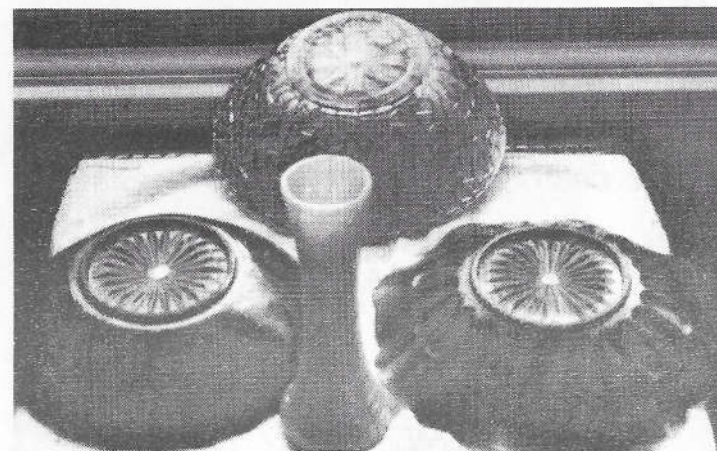
These pieces turned up sadly too late for inclusion in my new book, but I am only too happy to report the existence of yet another set of these rare vases and to know that BLACK-BASE Carnival Glass ware must surely be included in any future books on this subject.

M. QUINTIN-BAXENDALE, ENGLAND



To the left is a picture of part of a recent show held during August and September in Cornwall. At this display I showed the various Four Flowers pieces depicted in the other photographs and these aroused much interest. The pattern has many unusual base glass colours, and was made by various makers.

Patterns are known as FOUR FLOWERS (M.Hartung); PODS & POSIES (R.Presnick); OHLSON (EDA catalogs); #5625 (Riihimaki Finland variation). The basic design sports an interior pattern of four sets of two crab claws interspersed with four large single-head daisy flowers. The design VARIENT sports the same interior as the basic, but with the addition of four single-stem three-fingered buds set one between the four sets of crab claws. How's that for complication!



The exterior pattern can be THUMBPRINT (26 in all), CRACKLE, SODA GOLD or plain. The base glass colours known so far are as follows: Peach Opalescent, Green, Marigold, Blue, Smoke, Purple, Aqua, palest Yellow, Pink and pale Lilac. The shapes are plates in three sizes (6.5", 9", 11") and 8.5" bowls. The pale Lavender bowl has been identified at Eda Sweden as from the works there and the pale pink has it's possible origins at Riihimaki along with the Soda Gold exterior. A little pale yellow glass was iridised at Eda according to research at the source, but the Peach Opalescent is an unknown shade in Scandinavia and must surely hail from America, Dugan perhaps? Wherever they all came from, they certainly delight the eye and are a pleasure to own. Have you any other unusual or odd colored pieces in this pattern?

FEBRUARY 9-11, 1984

LOSE YOUR HEART TO CARNIVAL GLASS JAMBOREE

Sponsored by the Tampa Bay Club at the Huntley Inn, Lakeland, Florida. Contact Art Smith, 4535 Holder Court, Lakeland, FL. 33803 for more details.

MARCH 9-10, 1984

BURNS AUCTION IN NEW PHILADELPHIA, OHIO

Offering a complete collection of Dandelion mugs, over 10 pieces of Red, White Singing Birds & Beaded Shell mugs, many really nice plates and lots of other good stuff.

APRIL 26-29, 1984

HEART OF AMERICA'S ANNUAL CONVENTION

To be held at the Holiday Inn-KCI Airport, Kansas City.
*** BE THERE!!! ***

JUNE 1-3, 1984

LINCOLN LAND ANNUAL CONVENTION

Located at the Holiday Inn's Holidome in Rolling Meadows, IL. Contact Clarence Bechtel, 463 Miller St., Beecher, IL., 60401, for more details.

NEWS FROM THE TAMPA BAY CARNIVAL GLASS CLUB

The regular monthly meeting of the Tampa Bay Carnival Glass Club was held November 13th at the home of Ruth & Ray Argyros in Palm Harbor. As is the tradition, a delicious buffet started the activity at noon. Art Smith presided over the business meeting.

It was announced that Tom Burns will conduct an auction as a part of the Club's Third Annual Jamboree in Lakeland on February 10 & 11th as listed above. The Orange Tree Carnival Glass Club of Jacksonville will provide refreshments for a hospitality room the evening of the 9th for early arrivals. On Friday the 10th, a series of discussions on the various areas of carnival glass collecting will be held. Several prominent collectors have accepted invitations to participate. The full program will be announced shortly. A banquet will conclude Friday's activities. Saturday will feature many displays and much glass for sale, with tables available. Past Jamboree's have attracted large crowds of spectators and buyers and this years display space has been increased again. The Tom Burns auction will be held Saturday night.

There were twenty members present including several most welcome winter members. The annual Christmas party will be held December 18 at the home of Maria & Nick Vafiadis in Tarpon Springs.

ARTHUR I. SMITH

POLICY FOR ADVERTISING IN THE H.O.A.C.G.A. BULLETIN

1. ALL ADVERTISEMENTS, ANNOUNCEMENTS, LETTERS OR ANY OTHER ITEM TO BE PRINTED MUST BE RECEIVED BY THE BULLETIN SECRETARY BY THE 1ST OF THE MONTH TO INSURE BEING PUBLISHED IN THAT MONTHS BULLETIN.
2. MEMBER FAMILIES MAY ADVERTISE 10 FOR SALE AND 10 WANT ADS PER MONTH.
3. ONLY OLD CARNIVAL GLASS ITEMS OR H.O.A.C.G.A. SOUVENIRS WILL BE PUBLISHED.
4. DAMAGE OR MANUFACTURING FLAWS SHOULD BE NOTED.
5. ALL FOR SALE ITEMS MUST BE PRICED, NO BID ITEMS WILL BE PUBLISHED.
6. A 5 DAY RETURN PRIVILEGE AT BUYERS EXPENSE PROVIDING IT IS NOT AS ADVERTISED.
7. ALL POSTAGE AND INSURANCE IS EXTRA, TO BE PAID BY BUYER.
8. ALL ADS MUST BE LEGIBLE, OR THEY WILL NOT BE PRINTED.
9. THE H.O.A.C.G.A. DOES NOT ACCEPT RESPONSIBILITY FOR THE ACCURACY OF ANY ADS.

FOR ACCURACY OF DESCRIPTION, THE FOLLOWING COLOR KEY IS RECOMMENDED:

A--AMETHYST	G--GREEN	P--PURPLE
AMB--AMBER	HA--HONEY AMBER	PRL--PEARL-PASTEL ON MILK GLASS
AO--AQUA OPALESCENT	IB--ICE BLUE	PM--PASTEL MARIGOLD
AQUA--LIGHT BLUE-GREEN	IG--ICE GREEN	PO--PEACH OPALESCENT
B--BLUE	IGO--ICE GREEN OPALESCENT	R--RED
BO--BLUE OPAL OR BLUE OPAQUE	LAV--LAVENDER	RA--AMBERINA
CLM--CLAMBROTH	M--MARIGOLD	SM--SMOKEY
EB--ELECTRIC BLUE	MMG--MARIGOLD ON MILK GLASS	VAS--VASELINE

NOTE: IF YOU WISH TO DESCRIBE A PIECE AS LIGHT OR DARK, USE THE BODY OF THE AD.

PLEASE USE THE FOLLOWING:

EI--EXCELLENT IRIDESCENCE GI--GOOD (AVERAGE) IRIDESCENCE LI--LIGHT IRIDESCENCE

EXAMPLES:	AO EI	GOOD LUCK PLATE, ONE POINT BROKEN & REPAIRED	375.
	M LI	PEACOCK AT THE FOUNTAIN 7PC WATER SET, PITCHER HAS FLAKE	225.
	MMG GI	PEACOCK & GRAPE BOWL	360.
	A GI	WISHBONE TUMBLER, HEAT CHECK, LIGHT AMETHYST	47.50

IT WOULD BE GREATLY APPRECIATED BY EVERYONE IF YOU WOULD USE THESE CODES AS SUGGESTED.

FOR SALE

=====

DON MOORE, 2101 SHORELINE DRIVE, #462, ALAMEDA, CA. 94501
phone: 415-521-4592

A	EI DIVING DOLPHINS 3 footed bowl	185.
AMB	EI HEAVY GRAPE (Imperial) chop plate	175.
PO	EI LOUISA, 8 1/2" 3 footed bowl, RARE (4 known)	350.
B	EI GRAPE ARBOR hat shape (from tumbler)	125.
P	EI GRAPE & CABLE whiskey decanter & stopper, flat flake off of one thumbprint	495.
M	EI HEAVY GRAPE (Imperial) punch bowl and base	250.
A	EI MILLERSBURG HOLLY bon-bon	60.
A	EI ROSALIND 5 1/2" compote, RARE	475.
M	EI BARBER BOTTLE & stopper	75.
P	EI MAGPIE 10" bowl, Australian	125.

MARIE R. CAPPS, 12168 N. WILLOW, CLOVIS, CA. 93612
phone: 209-435-7786

M	EI ACORN BURRS pitcher & one tumbler	300.
P	PI GREEK KEY pitcher (poor iridescence)	400.
B	EI LATTICE & GRAPE pitcher & 6 tumblers	450.
M	EI MILLERSBURG water pitcher	125.
G	EI MILLERSBURG water pitcher & 1 tumbler	225.
P	EI MILLERSBURG water pitcher & 1 tumbler	250.
P	EI WREATH OF ROSES punch bowl & base (Persian Medallion int)	300.
B	EI MIKADO compote	350.
P	EI PERSIAN GARDEN fruit bowl & base	300.
P	EI MILLERSBURG MULTI-FRUITS punch bowl & base (chip on base)	500.

CHARLES PERRY, 8641 LAKESHORE DRIVE, SOUTHAVEN, MS. 38671
phone: 601-342-1694

SM	EI SHELL 9 1/2" plate	175.
M	EI THREE FRUITS 9" plate, mint & super color	65.
A	EI MILLERSBURG LEAF & LITTLE FLOWERS compote	250.
M	EI STREAM OF HEARTS compote, mint & super color	65.
G	EI GRAPE & CABLE butter top	70.
A	GI DAHLIA butter base	60.
A	EI ACORN BURRS butter base	75.

GEORGE LOESCHER, 2420 PARK AVENUE, BELOIT, WI. 53511
phone: 608-362-3104

M	EI MILLERSBURG DIAMOND tumbler	32.
G	EI GRAPE & CABLE punch cup, stippled	25.
PO	EI APPLE BLOSSOM TWIGS low bowl	120.
M	EI SINGING BIRDS mug-STIPPLED	100.
M	EI HOLLY plate	80.
B	EI PEACOCKS ON FENCE stippled plate	275.
M	EI PEACOCKS ON FENCE plate	250.
M	GI ORANGE TREE plate	70.
P	EI IMPERIAL'S RIPPLE vase	35.
B	EI HOLLY plate	135.

CURT & RUTH SCHINESTUHL, 55 NATALIE TERRACE, ABSECON, NJ. 08201
phone: 609-641-1814

G	EI GRAPE & CABLE bowl	95.
M	EI IMPERIAL'S PANSY & ARC bowl	25.
IB	EI PEACOCK @ FOUNTAIN small berry bowl, color is TEAL BLUE	125.
M	EI ILLUSION bon-bon	45.
P	EI MEMPHIS punch cup	25.
M	EI SAILBOATS wine	25.
B	EI HEARTS & FLOWERS compote	175.
VAS	EI THIN RIB 12" vase	175.
P	EI STRAWBERRY handgrip plate	195.
A	EI TWO FLOWERS large 3-footed bowl	125.

JOHN RESNIK, 4290 JACKSON AVE., CULVER CITY, CA. 90230
phone: 213-839-1588

M	EI BLACKBERRY BLOCK pitcher	285.
M	EI SODA GOLD pitcher	195.
M	EI MAGNOLIA & DRAPE enameled pitcher	125.
P	EI DIAMOND LACE pitcher	225.
P	EI GRAPE & CABLE pitcher	210.
M	EI PEACOCK @ FOUNTAIN pitcher	245.
M	EI HEAVY IRIS pitcher	295.
A	EI RAMBLER ROSE pitcher, scarce in this color	325.
B	EI GRAPE & GOTHIC ARCHES pitcher	295.
W	EI WREATHED CHERRY pitcher	375.

TED SHEIBLEY, 304A HILLCREST DRIVE, NEW CUMBERLAND, PA. 17070
phone: 717-938-6417

A	EI FLUFFY PEACOCK 7 piece water set	885.
G	EI MILLERSBURG CHERRIES creamer	55.
P	EI TOWN PUMP	500.
B	WREATHED CHERRY small oval bowls, have 3 @ 35 each or all...	75.
M	EI STORK & RUSHES mugs, have 3 @ 25 each or all for	60.
G	EI BLACKBERRY BRAMBLE compote	35.
A	EI CHERRY 3 footed bowl	50.
M	EI APPLE BLOSSOM bowls, have two, each	15.
B	EI LEAF CHAIN bowl	30.

BURNEY TALLEY, 1814 SLATE NW, ALBUQUERQUE, NM. 87104
phone evenings or chance: 505-242-1261

A	EI DIVING DOLPHINS bowl, Scroll Embossed interior	350.
M	EI ILLUSION bon-bon	45.
M	EI N'S PEACOCKS bowl	95.
B	EI DRAGON & LOTUS ice cream shaped bowl	60.
M	EI PEACOCK & URN bowl (Fenton)	85.
P	EI IMPERIAL GRAPE bowl	50.
M	EI TIGER LILY 5 piece water set, good color	225.
M	EI OCTAGON 5 piece water set, good color	225.
M	GI IMPERIAL GRAPE water goblet	25.
G	GI BULLSEYE & BEADS vase, Helios	35.

O.E. SWEENEY, 28 ESMOND STREET, ESMOND, RI. 02917
phone: 401-231-4108

IB	EI GRAPE & CABLE fruit bowl	800.
IG	EI GRAPE & CABLE centerpiece bowl	775.
IG	EI GRAPE & CABLE master berry	650.
IB	EI NIPPON bowl	210.
W	EI PERSIAN GARDEN 11 3/4" bowl	210.
PO	EI NAUTILUS creamer	230.
PO	EI APPLE BLOSSOM TWIGS ice cream typw bowl	135.
G	EI VENITIAN giant rosebowl, some wear on rim	750.
M	EI HORSES HEADS plate	165.
M	EI CIRCLE SCROLL tumbler	300.

JOHN MUEHLBAUER, 7051 LA COSTA LANE, CITRUS HEIGHTS, CA. 95610
phone days: 916-355-2455, nights: 916-723-2852

M	IMPERIAL GRAPE 6" plate	25.
M	HOLLY compote	25.
G	IMPERIAL GRAPE tumbler	30.
M	NORTHWOOD FLUTE tumbler, have 6, each	30.
G	HEAVY GRAPE chop plate, Helios	100.
M	THUNDERBIRD large bowl	65.

LEE BRYANT, R.R. #1, DECATUR, IN. 46733
phone: 219-639-3415

M	EI OCTAGON water pitcher, matches ground base tumblers	70.
M	EI ORANGE PEEL punch cups, have 5 @ \$15 each or all for	60.
M	EI LUSTRE ROSE creamer	30.
PO	GI LEAF RAYS nappy	25.
M	EI WINE & ROSES stemmed wine	30.
G	EI COBBLESTONES bowl	40.
M	EI GOLDEN GRAPES rosebowl	30.

Mrs. L.G. MATTHEW Sr., 707 E. HILLTOP DRIVE, ROGERS, AR. 72756
phone 7AM-9PM: 501-636-2917

M	EI COSMOS & CANE tumbler	80.
G	EI FOUR-SEVENTY-FOUR punch cup	25.
M	EI FLUFFY PEACOCK tumbler	45.
M	EI CRAB CLAW tumbler	70.
M	EI FIELD FLOWER tumbler	30.
M	EI APPLE TREE tumbler	25.
M	EI STORK & RUSHES beaded tumblers, have 2, each	19.
M	EI LATTICE & DAISY tumbler	20.

D.W. EVANS, 617 EAST 18TH STREET, SOUTH SQUIX CITY, NE. 68776
 phone: 402-494-5269

A	EI FINE CUT & ROSES rosebowl	65.
A	GI FISHERMANS mug	70.
A	EI GRAPE & CABLE punch bowl base for middle sized set	40.
G	EI ACORN BURRS punch cup	30.
G	EI IMPERIAL GRAPE wine decanter, no stopper	35.

EARL & BEULAH LINDQUIST, 513 9TH AVENUE, CLARKFIELD, MN. 56223
 phone: 612-669-7361

B	EI HEARTS & FLOWERS compote	95.
W	EI PALM BEACH sauce, gold trim, have two, each.....	35.
PO	EI CAROLINE handled basket	235.
PO	EI CORINTH whimsey vase, 6" tall	55.

ROBERT SUSLOWICZ, P.O. BOX 6358, PITTSBURGH, PA. 15212

P	EI BROKEN ARCHES punch bowl, base and 4 cups	550.
W	EI POPPY SHOW plate	285.
AQUA	GI ORANGE TREE mug	115.
CB	EI DAISY & DRAPE vase	175.

STERLING BUTZ, 221 NORTH ADAMS STREET, ALLENTOWN, PA. 18104

M	EI HANGING CHERRIES butter dish	110.
A	EI THREE FRUITS stippled plate	105.
M	EI STAG & HOLLY rosebowl	135.
A	EI FLUER DE LIS collar base bowl	185.
B	EI PERSIAN MEDALLION plate	130.
W	EI PEACOCKS ON FENCE plate	250.
M	EI VINTAGE 9 1/4" dome footed plate	100.
A	GI WREATH OF ROSES rosebowl	45.
W	EI COSMOS & CANE compote	90.
M	GI FILE tumbler	60.

CHARLES ADAMS, 2211 SUNSET BLVD., LOS ANGELES, CA. 90026
 phone: 213-483-7755 or 213-384-5001

M	EI TROUT & FLY ruffled bowl	275.
M	EI VINTAGE lily for epergne	45.
G	EI GRAPE & CABLE tumblers, N, bronze & gold irid., each	45.
M	EI RISING SUN pedestal base pitcher	500.
IG	EI PEACOCKS ON FENCE 9 1/4" plate	300.
SM	EI CRABCLAW 4" berry bowl	20.
B	EI PANTHER 7 piece berry set, all matching	750.
P	EI CORN VASE, N, oxblood purple	250.
P	EI PEACOCK @ FOUNTAIN 9 1/2" berry bowl	190.

*** SEND S.A.S.E. FOR NEW LIST OF OLD CARNIVAL ***

MARY KESTERSON, 3020 MESA ROAD, WILLOW PARK, TX. 76086
 phone: 817-441-8410

M	EI PONY bowl	40.
M	EI PEACOCK & URN compote, have 2, each	35.
M	EI BUTTERFLY & BERRY sugar/lid	65.
M	EI LION 7" ice cream shape bowl	95.
G	EI INVERTED FEATHER cracker jar	165.
W	EI DOUBLE STEM ROSE dome footed 8 1/2" bowl	75.
W	EI PEACOCK & URN 9" bowl, Fenton	95.
IB	EI GRAPE ARBOR tumbler	135.
P	EI GRAPE & CABLE butterdish	175.
AO	EI THREE FRUITS spatula footed bowl, pastel	365.

TOM MORDINI, 36 N. MERNITZ AVENUE, FREEPORT, IL. 61032
 phone: 815-235-4407

W	EI ORANGE TREE 9" flat plate, frosty	135.
M	EI HORSE MEDALLION footed bowl, straight sides	65.
M	EI DAISY & DRAPES vase	165.
M	EI CHERRY CHAIN 6" plate	40.
M	EI ROBIN mug, super color & OLD	40.
P	EI TEN MUMS bowl, candy ribbon, super	95.
G	EI MILLERSBURG PRIMROSE bowl, radium	90.
G	EI GENERAL FURNITURE advertising hat	45.
G	EI MILLERSBURG COSMOS small bowl	35.
AMB	EI PLUM PANELS vase, rare	75.

RICHARD FENTON, P.O. BOX 105, MACEDONIA, OH. 44053
phone: 216-467-1143

G	EI PANSY bowl	38.
A	EI STAR OF DAVID bowl	60.
B	EI VINTAGE fernery	50.
SM	EI DOUBLE SCROLL candlesticks	60.
B	EI BUTTERFLY & BERRY vase	60.
A	GI LOUISA candy dish	50.
G	GI LUSTRE FLUTE punch cups, N, three cups for one money.....	40.
G	EI MEMPHIS punch cups, N, have 4, one has check in handle, all	90.
A	EI GRAPE & CABLE berry bowls, N, SUPER COLOR, four bowls for	110.
G	EI LEAF & BEADS candy dish	40.

RAY HITCHCOCK, RR #1, BOX 301, WINTERSSET, IA. 50273
phone: 515-462-2074

VAS	EI ACORN bowl, 7 1/2" wide, eight ruffled	100.
LAV	EI LOUISA rose bowl	85.
M	EI LEAF & BEADS rosebowl, base glass is PINK	85.
A	EI VINTAGE 7 1/2" plate	80.
B	EI PEACOCK @ FOUNTAIN compote, rare	550.
R	EI BLACKBERRY 6 3/4" ruffled open edge hat	275.
A	EI PINECONE 6" plate	100.
M	EI HOBSTAR & FEATHER punch cups, have six @ \$20 each or all	100.
A	EI MILLERSBURG DIAMOND tumblers, have six @ \$30 each or all	175.
B	EI BUTTERFLY & BERRY butter dish	165.

DICK WITHERBEE, 847 STAFFORD ST., ROCHDALE, MA. 01542
phone: 617-892-4420

P	EI BIRDS & CHERRIES compote, a beauty	58.
M	EI VINTAGE fernery	28.
PO	EI RAINDROPS 9 1/2" dome footed bowl	75.
M	EI PEACOCK @ FOUNTAIN punch bowl & base	220.
EB	EI BUSHEL BASKET, electric blue & outstanding	95.
G	EI HEAVY GRAPE 8" plate	27.
P	EI BUTTERFLY hatpin, long pin	27.
G	EI LEAF & BEADS rosebowl, Rays interior, very pretty	60.
M	EI LOTUS & GRAPE 2 handled bon-bon	22.
P	EI DAISY & PLUME 3 footed rosebowl, Rays interior, perfect	125.

PAGE 33

JAMES & JUDY KEY, RT. 1, BOX 153B, MARIANNA, ARK. 72360
phone: 501-295-6770

M	EI BUTTERFLY & BERRY master and four small bowls	130.
M	EI GRAPE & CABLE 7 3/4" spatula footed bowl	30.
B	EI PINE CONE 5 3/4" ice cream shaped bowl	30.
M	EI COINDOT 7" ice cream shaped bowl	23.
M	EI QUESTION MARK bon-bon	20.
M	EI STIPPLED RAYS 6 7/8" bowl	20.
M	EI PANSY sugar & creamer, both	35.
M	EI LUSTRE ROSE creamer and spooner, each	30.
M	EI COSMOS & CANE tumbler	70.
G	EI SMOOTH RAYS 7 3/8" bowl, N	30.

JERRY BLAKE, 1200 31ST STREET, WEST DES MOINES, IA. 50265
phone: 515-225-3977

SM	GI POINSETTIA milk pitcher	85.
G	GI GRAPE & CABLE 7" bowl	35.

ERNEST & MARGIE LANNINGHAM, 415 S. WESTGATE--#11, WESLACO, TX.
78596
phone: 512-968-2201

AO	EI SINGING BIRDS mug, rare & super	1075.
W	EI SINGING BIRDS mug, rare & great iridescence	750.
PO	EI FISHERMANS mug, rare & outstanding opal	1075.
M	EI TWO FLOWERS 9" plate, more rare than the 13" chop plate	485.
P	LI TOWN PUMP, N	275.

PAGE 34

=====
GLASS WANTED
=====

CLARENCE R. BECHTEL, 463 MILLER STREET, BEECHER, IL. 60401

- 3 Dark Marigold MEMPHIS punch cups
2 Amethyst WREATH OF ROSES punch cups with Persian Medallion interior
White base for ORANGE TREE punch bowl

AL RETTKE, 14226 EAST 143RD LANE, BURNSVILLE, MN. 55337
phone days (work): 612-853-6690, home: 612-432-7489

- G SINGING BIRDS, SPRINGTIME or PEACOCK @ FOUNTAIN butter dish base
IB or P GRAPE & CABLE lid for powder jar
P PEACOCK @ FOUNTAIN punch bowl-bowl only
W or M PEACOCK & URN master ice creams with exceptional color
AO, IG EMBROIDERED MUMS bowls
IB, IG WISHBONE footed bowls
IB, IG POINSETTIA footed bowls
IB, IG GRAPE & CABLE bowls or plates any size

GEORGE S. BOND, 1406 N. FERNCREEK AVE., ORLANDO, FL. 32803
phone after 5:30: 305-894-4393

- P EI GRAPE & CABLE sweetmeat top
A EI MILLERSBURG CHERRIES lid for butter dish
A EI MILLERSBURG CHERRIES base for sugar
M EI ORANGE TREE footed base to butter dish
W EI ORANGE TREE lid for butter dish

TED SHEIBLEY, 304A HILLCREST DRIVE, NEW CUMBERLAND, PA. 17070
phone: 717-938-6417

- P PEACOCK @ FOUNTAIN creamer, gold iridescence
W PEACH berry dishes, large & small
B or W PEACH water sets, 7 pieces
ANY COLOR (except M) PEACOCK @ FOUNTAIN 7 piece water sets
B STORK & RUSHES 7 piece water set
P ACORN BURRS large berry bowl

DALE & LOU KNIGHT, 4315 ALVERNON WAY, TUCSON, AZ. 85718
phone evenings: 602-299-9700

- P EI GRAPE & CABLE whiskey decanter stopper
A EI SPRINGTIME butter base
IG EI GRAPE & CABLE sugar lid

ESTHER RODGERS, 33237 CR 452, BRINKHAVEN, OH. 43006
phone: 614-824-4106

- A EI MILLERSBURG CHERRIES butter lid
A EI MILLERSBURG CHERRIES sugar
G EI MILLERSBURG CHERRIES butter dish
G EI MILLERSBURG CHERRIES powder jar bottom
P EI WINDMILL milk pitcher
G EI BUSHEL BASKET
IB EI BUSHEL BASKET
IB EI FINE CUT & ROSES rosebowl
A EI SWIRL HOBNAIL spittoon
G EI MILLERSBURG CHERRIES flared rim tumbler, need 2

OMER SWEENEY, 28 ESMOND STREET, ESMOND, RI. 02917
phone: 401-231-4108

- P VINTAGE powder jar top
P SPRINGTIME sugar top
B PEACOCK @ FOUNTAIN or SINGING BIRDS butter base
P BEADED SHELL sugar bottom

BOB LOVELL, 215 SHEVEL DRIVE, GOODLETTSVILLE, TN. 37072
phone nites: 615-859-0616

LOTUS & POINSETTIA BOWLS: any ice & pastel colors, opals, green, white,
blue. Ball footed, large size. no marigold or vaseline

SEACOAST PIN TRAYS: amethyst and marigold

PANTHER Master Berry bowl in Marigold

D.W. EVANS, 617 EAST 18TH STREET, SOUTH SQUIX CITY, NE. 68776
phone: 402-494-5269

A OCTAGON tumblers
TROUT & FLY bowl (slight damage OK)

BURNEY TALLEY, 1814 SLATE NW, ALBUQUERQUE, NM. 87104
phone evenings or chance: 505-242-1261

G OCTAGON wines
G OCTAGON wine decanter stopper
W DAHLIA tumblers
R COLONIAL PANELS tumblers

EARL LINDQUIST, 513 9TH AVENUE, CLARKFIELD, MN. 56223
phone: 612-669-7361

G, P, M DRAPERY rosebowls
IG, G DAISY & DRAPES vases

JOHN MUEHLBAUER, 7051 LA COSTA LANE, CITRUS HEIGHTS, CA. 95610
phone days: 916-355-2455, nights: 916-723-2852

WHITE-----EMBROIDERED MUMS BOWL
MARIGOLD/MILK GLASS----ANY PIECES
AQUA DPAL-----HEARTS & FLOWERS BOWL

JAMES & JUDY KEY, RT. 1, BOX 153B, MARIANNA, AR. 72360
phone: 501-295-6770

ANY ADVERTISING plate or bowls
ANY KITTENS odd colored or uncommon pieces

PAGE 37

RAY HITCHCOCK, R.R. 1, BOX 301, WINTERSET, IA. 50273
phone: 515-462-2074

M IMPERIAL GRAPE water pitcher
M STAG & HOLLY chop plate
LAV HOLLY plate or any other unusual colors

Mrs. L.G. MATTHEW Sr., 707 E. HILLTOP DRIVE, ROGERS, AR. 72756
phone: 501-636-2917

P EI PEACOCK @ FOUNTAIN punch bowl, base and matching cups

MARY KESTERSON, 3020 MESA ROAD, WILLOW PARK, TX. 76086
phone: 817-441-8410

R ORANGE TREE bowl, no silver iridescence please
R DRAGON & LOTUS bowl, same as above
P BIG FISH bowl-any shape
P SEACOAST pin tray
P SUNFLOWER pin tray
AO PEACOCKS bowl

CHARLES A. ADAMS, 2211 SUNSET BLVD., LOS ANGELES, CA. 90026
phone: 213-483-7755 or 213-384-5001

ANY ADVERTISING pieces
M VINTAGE epergne base
A GRAPE & CABLE stopper for cologne bottle

KAREN ENGEL, 35292 OAK VIEW DRIVE, BROWNSVILLE, OR. 97327
phone evenings: 503-466-5989

R STRAWBERRY bon-bon
M SPLIT DIAMOND covered sugar bowl
M APPLE PANELS creamer
R PLAID ruffled bowl
P IMPERIAL GRAPE stemmed wines, need up to 4
M WREATHED CHERRY tumblers, up to 2
IG BANDED DRAPE ENAMELED tumblers, need up to 4

PAGE 38

ORDER FORM FOR H.O.A.C.G.A. SOUVENIRS



PLEASE MAKE CHECKS PAYABLE TO
H.O.A.C.G.A. AND SEND TO THE
SECRETARY:

Diane Treff
13646 Leavenworth Road
Kansas City, KS., 66109

PLEASE MAIL:

_____ 1983 CUSTARD GLASS
W. MARIGOLD OVERLAY LOVING
CUPS AT \$40.00 PLUS \$3.00
POSTAGE FOR EACH



*** SPECIAL ***

_____ 1982 GILDED ICE BLUE
CORN VASE AND 1981 RED GRAPE
& CABLE CANDLELAMP AT \$100.00
PLUS \$6.00 POSTAGE EACH PAIR

** SUPPORT YOUR CLUB AND ORDER THESE FINE SOUVENIRS TODAY **

PLEASE PRINT YOUR NAME AND ADDRESS
