

H.O.A.C.G.A.
BULLETIN SECRETARY
AL RETTKE
14226 East 143rd Lane
Burnsville, MN 55337

MARCH, 1984

=====
FIRST CLASS MAIL
=====



Electric Auto 1917
USA 7c



Robert Millikan

37c
USA

INSIDE THIS ISSUE

CONVENTION NEWS.....	page 2
CARNIVAL CALENDAR.....	3
COMING EVENTS.....	5
PICTORIAL PATTERN PARADE.....	9
10 RARE PLATES, 10 COMMON PATTERNS.....	11
RARITIES & SELDOM SEEN.....	18
TUMBLER SERIES.....	19
RARITY REPORT.....	21
SCROLL EMBOSSED & ANOTHER.....	23
NOTEBOOK INSERTS INFO.....	27
CARNIVAL LIBRARY.....	29
GLASS FOR SALE.....	32
GLASS WANTED.....	41



Heart of America

Carnival Glass Association, INC.

MEMBERSHIP JUNE TO JUNE
\$20.00 PER COUPLE OR SINGLE

PUBLISHED THE 15TH
OF EACH MONTH

PRESIDENT

GEORGE O. MCGREW, JR.
6800 WOODWARD
OVERLAND PARK, KS 66204
913-262-8822

VICE-PRESIDENT

MICHAEL BASEY
4315 ADAMS
KANSAS CITY, KS 66103
913-432-2460

TREASURER

ELIZABETH BOLLES
5204 CATALINA
SHAWNEE MISSION, KS, 66205
913-432-5438

SECRETARY

DIANE TREFF
13646 LEAVENWORTH ROAD
KANSAS CITY, KS 66109
913-721-2917

BULLETIN SECRETARY

AL RETTKE
14226 EAST 143RD LANE
BURNSVILLE, MN 55337
612-432-7489

ALL MONETARY FIGURES QUOTED ARE IN U.S. DOLLARS
PLEASE MAKE CHECKS FOR DUES PAYABLE TO H.O.A.C.G.A.
AND SEND THEM TO THE SECRETARY AS LISTED ABOVE

GOOD NEWS FOR THE H.O.A.C.G.A. CONVENTION

The KCI-Airport Holiday Inn reported that as of February 24, all but 23 of the 126 rooms set aside for the convention had been filled. We will talk with the management to see if we can set aside more rooms as reservations are still coming in.

There is no doubt that this will be HOACGA's largest and best attended convention. WHY??? The answers are: Where can Carnival Glass lovers go and see more glass purchased and traded; attend the finest educational meetings; get to attend one of the finest auctions of the year; or attend a champagne banquet with Floyd and Cecile Whitley as our guest speakers? The Whitleys are full of surprises. You also receive a carnival glass mug, made especially for HOACGA, just for attending the banquet.

Bring a display and you could win one of five cash awards. The winners will be picked by the members votes.

John Britt will be in charge of the panel discussion on Thursday at 7PM, so please bring any glass that needs to be identified, or those oddly colored or unusually shaped pieces.

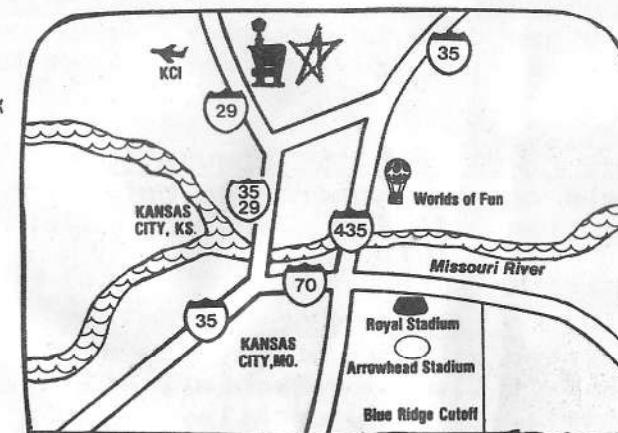
There will be a big Saturday night SPECIAL FUN NIGHT, A REAL WESTERN CHUCK WAGON DINNER! Country music to keep you smiling and dancing and Sadie & Herb Treff will see that you get a real wrangler dinner. Wear your Western clothes, boots and all. Cost is only \$5 per person, children free.

Sunday morning we will see you off with a free breakfast.

LOCATION: HOLIDAY INN, KCI AIRPORT
phone: 816-464-2345
Special Daily Rate of only \$38 + tax

COOLEY MILLER
DAVIS SHIKLES

CONVENTION CO-CHAIRMAN



**** CARNIVAL CALENDAR ****

MARCH 17

THIRD ANNUAL CARNIVAL GLASS SHOW & SALE

Sponsored by the Keystone Carnival Glass Club at Lititz, PA. Phone Elwood Funk for more details: 717-665-2395.

MARCH 30

WOODY AUCTION IN KANSAS CITY

Selling the Darnell collection and other important pieces. For further details, SEE THE NEXT PAGE

MARCH 30 & 31

BURNS AUCTION IN NEW PHILADELPHIA, OHIO

Complete collection of Dandelion mugs, over 10 pieces of Red, etc. PLEASE NOTE DATE HAS CHANGED.

APRIL 23-25

ENCORE CONVENTION

Old and new Carnival event. Tom Burns will auction off glass Wednesday at 6PM. Best Western Airport, Platte City, MO. I-29 & Exit 19, phone: 816-464-2300. Six miles from HOACGA.

APRIL 26-29

HEART OF AMERICA'S ANNUAL CONVENTION

To be held at the Holiday Inn--KCI Airport, Kansas City. Phone 816-464-2345 and get your reservations in NOW!!

MAY 4 & 5

BURNS AUCTION IN NEW PHILADELPHIA, OHIO

Another date to remember, more news on this soon or contact Tom for more details at RD #1, Bath, NY 14810.

MAY 25-27

THE FIRST KEYSTONE CONVENTION

Held at the Penn-Harris Motor Inn, Camp Hill, PA. Auction with 180 pieces of quality Carnival on Friday.

JUNE 1-3

LINCOLN LAND ANNUAL CONVENTION

Located at the Holiday Inn's Holidome in Rolling Meadows, IL. Contact Clarence Bechtel, 463 Miller St., Beecher, IL., 60401, for more details.

JUNE 27-30

INTERNATIONAL CARNIVAL GLASS ASSOCIATION'S ANNUAL CONVENTION

Held at the Drawbridge Motor Inn, I-75 & Buttermilk Pike, Fort Mitchell, KY 41017. Thursday Auction, Friday banquet and guest speaker Richard Kojis on Ice Blue Carnival.

JULY 26-28

AMERICAN CARNIVAL GLASS ASSOCIATION'S ANNUAL CONVENTION

To be held at the Sheraton Canandaigua Inn, Canandaigua, NY. For info contact: Emma Tilton, Box 273, Gnadenhutten, OH 44629.

AUGUST 9-11

PACIFIC N.W. CARNIVAL GLASS ASSOCIATION'S ANNUAL CONVENTION

To be held at the Holiday Inn in Eugene, Oregon. For more information contact: Karen Engel, Convention Chairman, 35292 Oak View Drive, Brownsville, OR 97327.

SEPTEMBER 8-9

NEW ENGLAND CARNIVAL GLASS ASSOCIATION'S MINI-CONVENTION

Held at the American Motor Inn, Sturbridge, Mass. A Tom Burns auction on the 9th. Call Howard Robinson, 413-528-1359.

OCTOBER 19-21

AIR CAPITOL CARNIVAL GLASS CLUB CONVENTION

Ray Notley, banquet speaker. Airport Sheraton Inn, 5500 W. Kellogg, Wichita, KS 67209 phone: 316-943-2181.

***** DARNELL AUCTION, MARCH 30TH *****

We have received notice that the Woody Auction Company will conduct the sale of the Marie & Herman Darnell collection plus other quality consignments at the Ramada Inn SE, 6101 East 87th Street, Kansas City, MO at 7PM March 30th. The hotel's phone number is 816-765-0440 and it is at I-435 & 87th Street. The following is a partial listing:

BOWLS: P-FARMYARD (square), AD-VINTAGE, AD-W-IB-PEACOCKS, IB-NIPPON, W-ROUND UP, IG-PEACOCK & URN master i.c.

PLATES: G-NUART CHRYSANTHEMUM & HOMESTEAD, W-ORANGE TREE, IG-PEACOCKS, P-HEAVY GRAPE, P-FANCIFUL, P-GOOD LUCK, B-P-ROSE SHOW, B-RIBBON TIE.

There will also be several good punch sets, water sets and berry sets plus several more "leaders" to be announced. If you did not get the brochure, you'd better give the Woodys a call: 316-746-2694

=====

COMING EVENTS

=====

Well, I hope that everyone is getting ready for our convention, it's only about a month away!! It will be here before we know it. Don't forget to send in your preregistration form by April 1st. I have a surprise for everyone in March, we will have two different programs. I hope that you all can make it. Now as they say, "on with the show!":

COMING EVENTS--JANUARY PROGRAM:

The following is a summary from Mr. Robert Grissom on his program on Table sets. This summary was too late to get published in last month's Bulletin. This is what Mr. Grissom had to say:

=====

TABLE SETS IN UN-COMMON COMMON COLORS

=====

As we watch the pastels, in most instances, sell for top dollar, we sometimes forget that some of the more common colors may be more scarce. We see so many pieces of Carnival in the usual colors of amethyst, blue, green and marigold that we come to believe that all the different patterns and pieces come in all of these colors. Some of the Table Set patterns are very hard to find in these common colors.

The following TABLE SETS (in somewhat common patterns) are SCARCE in these common colors:

Beaded Shell	Amethyst
Butterfly & Berry	Amethyst and Green
Carnival Hobstar	Amethyst
Country Kitchen	Marigold
Cosmos & Cane	Marigold
Grape & Gothic Arches	Green
Lustre Rose	Amethyst and Green
Octagon	Green
Orange Tree	Amethyst
Palm Beach	Marigold
Peacock at the Fountain	Blue and Green
Singing Birds	Green
Stork & Rushes	Amethyst and Marigold

The only known Ice Green table set pieces are in the Grape & Cable pattern and the only Ice Blue pieces are in the Peacock at the Fountain pattern.

Several Table Set patterns are not discussed because they are difficult to come by in any color. It is becoming increasingly difficult to put together most any of the sets regardless of the color.

I would like to thank Bob again for putting on his program and for giving us the above summary of his program.

FEBRUARY PROGRAM--SWAP & SHOP

There was some nice glass at the meeting. A few pieces were: Green Panther master berry bowl, Vaseline Orange Tree wine, Red Blackberry hat, Ice Blue Drapery candy dish, Peach Opal Question Marks bon-bon, Marigold Vintage fernery, Marigold Stork & Rushes butterdish, Vaseline Open Edge basket. There were many more nice pieces and a good time was had by all.

=====

COMING EVENTS -- FUTURE PROGRAMS

=====

March	Ladora A. Allen	Lustre Rose, Open Rose, Captive Rose
March	Florence Cunningham	Carnival Glass Buttons
April	NO PROGRAM PLANNED BY ME, CONVENTION TIME!!	
May	ALL MEMBERS	SHOW & TELL

If you have anything of interest or a piece of glass you would like to share with the rest of us, let me know and I will see that it gets reported.

REMEMBER, I hope to see everyone at our March meeting for our double program. DON'T FORGET TO GET YOUR DISPLAYS READY FOR THE CONVENTION. TIME IS GETTING SHORT!!

MICHAEL J. BASEY
VICE-PRESIDENT

=====
FROM THE SECRETARY:
=====

There seems to be some confusion as to which HOACGA inserts are available for shipment!! The notebook at this time is available through the second set of inserts on water sets. This insert (the 2nd) ends with #120, Wreathed Cherry. The cost of the entire notebook to date, including and stopping with the second set of inserts on water sets is \$11.50 plus \$2.50 postage.

WE ARE NOW TAKING ORDERS FOR THE THIRD SET OF INSERTS, this set to be on enameled water sets. The cost for the insert is \$3.50 plus \$1.00 postage. This is the club's actual cost of production. PLEASE SPECIFY when ordering this set that you want the third set. Using your convention pre-registration form would help to eliminate this confusion. These inserts WILL NOT BE AVAILABLE FOR SHIPMENT UNTIL CONVENTION TIME. If you have ordered your third set and you did use the convention pre-registration application, most likely you have been notified of the approximate date of shipment. If you ordered your inserts and plan to attend the convention, you will receive them at that time.

Members who have not ordered the HOACGA notebook at all may order the entire notebook including the third set of inserts for \$14.00 plus \$2.50 postage. THEY WILL NOT BE SHIPPED UNTIL CONVENTION TIME IN APRIL '84. Please use your convention pre-registration application for this even if you do not plan to attend the convention.

HOPE TO SEE YOU ALL AT THE CONVENTION.....DIANE TREFF

=====
ANOTHER ERA ENDS
=====

O. JOE OLSON, long time Carnival authority and sometimes controversial editor of the CARNIVAL GLASS NEWS & VIEWS, passed away on Sunday February 19. The collecting world will mourn his loss for some time to come. Mr. Olson was one of very few HOACGA members to be given an Honorary Lifetime membership in the club.

Cards may be sent to: The O. Joe Olson Family
P.O. Box 5421
Kansas City, MO 64131

=====
CANADIAN CARNIVAL GLASS ASSOCIATION CONVENTION
=====

OCTOBER 6, 1984 AT KITCHENER, ONTARIO, CANADA
ACTIVITIES include a SHOW & SALE OF CARNIVAL GLASS on Saturday from 10AM to 3PM, with an IDENTIFICATION TABLE during the Show. There is no cost for the tables to display or sell glass. All glass will be set up in the large banquet room on Saturday only.

Saturday night at 6PM we will have a Banquet with a large buffet of salads, cold meats, relishes, etc. and roast turkey with all the trimmings.

BANQUET SPEAKER: WILLIAM HEACOCK

After the Banquet we will have a Carival Glass AUCTION, list later.

On Sunday, October 7th, a tour of area collections is being arranged for all Carnival Club members.

The convention will be held at the Conestoga Inn, 1333 Weber Street East, Kitchener, Ontario. The cost of rooms for two people is \$65 Canadian. There is a 20% exchange rate for the U.S. dollar at this time. Cutoff date for rooms is April 30th, 1984. This is really a big weekend in our area and I would suggest that anyone who is interested in attending phone me as soon as possible.

We have made so many friends at the HOACGA conventions and hope that some of your members might be able to attend ours. We would like to extend some of the hospitality that we have been shown over the years at the various conventions we have attended.

MEMBERSHIP is \$10.00 per household and a newsletter is sent out eight times a year. It has been averaging 18 pages and is full of informative articles and interesting letters about unusual pieces and "finds". More information about the convention and the SOUVENIR will be in future newsletters. Why not join today?

For more information write or call:

JANET KNECHTEL, CCGA Convention Chairman
R.R. #1, Breslau, Ontario, Canada NOB 1M0
1-519-648-2696

P.S. All hotels and motels in the area are already booked for Oktoberfest for this date. Avoid disappointment, BOOK NOW!!

=====

PICTORIAL PATTERN PARADE

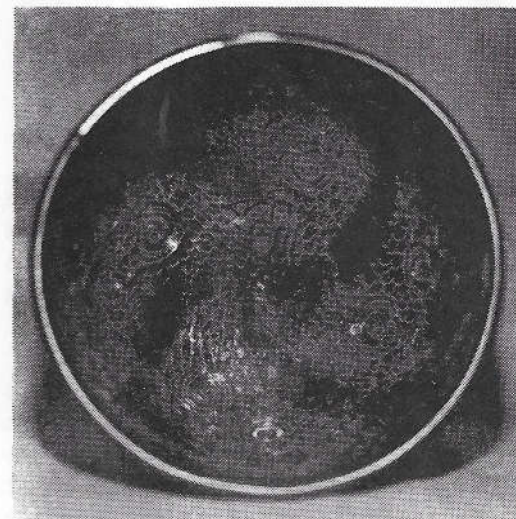
=====

by John & Lucile Britt



VERY RARE "STREAM OF HEARTS" GOBLET

The above goblet with the "Persian Medallion" exterior and the "Stream of Hearts" interior is the only one in the goblet shape that we have ever seen. "Stream of Hearts" is listed in Hartung Book 8, page 49. It was made by the Fenton Art Glass Company in Williamstown, WV. These pieces are normally found flared out into ruffled compotes. Even the compotes are not common but you do see one of them occasionally. Marigold is the only color that has been reported. The "Persian Medallion" pattern covers the outside of the bowl, the stem and base. The "Stream of Hearts" interior pattern features heart shapes against a filler of small motifs which somewhat resemble embroidery stitches. These groupings of hearts and stitch like filler are in four whirling figures which are very similar to the whirling figures used in "Fantail", another Fenton pattern (See Hartung Book 5, page 35). These hearts and stitches are also used on the interior of Fenton's "Hearts & Trees" bowls, another rare pattern (See Hartung Book 5, page 39). We consider this marigold "Stream of Hearts" goblet as being extremely rare.



"Stream of Hearts" photograph and sketch

Fenton did come out with new "Persian Medallion" goblets in amethyst and red in about 1974. These had the "Persian Medallion" pattern inside and out so there should be no confusion between old and new. They also marked the new goblets with the Fenton name on the bottom of the base. The new goblets are fine items, but do not purchase them for old prices.

JOHN & LUCILE BRITT

1984 CARNIVAL GLASS AUCTION PRICE REPORT

We would like to announce to all of you that the 1984 Edition will be ready in time for the Heart Of America Convention in Kansas City. For those of you unable to make the convention, we will begin mailing them out May 1st.

Cost will be the same as the last two years, \$8.00 US postage paid (overseas add \$1.00).

There will be about 4000 pieces of Carnival listed that sold in 1983. As last years major auction total was over 10,000 pieces, we feel that a good representative sample is given in this report. Club and dealer terms are available. We would also like to thank the hundreds of you who have purchased past issues and John Woody and Tom Burns for their co-operation.

Order from: AL & WENDY RETTKE
14226 East 143rd Lane
Burnsville, MN 55337

=====

TEN RARE PLATES -- TEN COMMON PATTERNS

=====

by Don Moore

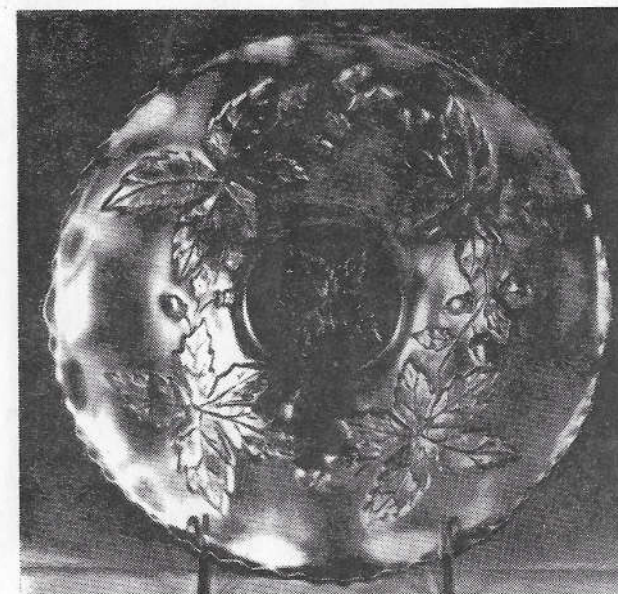
We sometimes forget the importance of shape. A specific pattern can be very common in one shape and very rare in another. The ten 9" plates we will look at here are excellent examples of this principle. The bowls in these ten patterns are common and relatively easy to find but the plates are quite a different matter.

Back in the Carnival heyday, bowls were more practical and better sellers than the plates. Consequently, bowls were made in abundance but plates were a drug on the market. In fact, so few plates were made in some patterns that they are almost whimsies. An exception to the rule makes an interesting trivia question. At your next Carnival get-together, ask those present if they know of a pattern where only plates were produced. The answer is the New Art plates, both Homestead and Chrysanthemum. I have never heard of a bowl in either pattern and should one turn up it would be extremely rare. I guess the difference here is the fact that this pattern was strictly decorative and the plates served this purpose better than a bowl.

Lets take a look at the ten hard to find 9" plates that are quite readily available as bowls:

CARNIVAL THISTLE (Fenton)

This is a classic example of the rare plate-common bowl theme. A bowl in this pattern can be found for around \$35 in amethyst, marigold, blue or green. Plates are very rare in any color. I've heard of only green and amethyst but a marigold one would come as no great surprise. A green plate brought \$1150 at an auction in 1981, and the amethyst may be even harder to find.

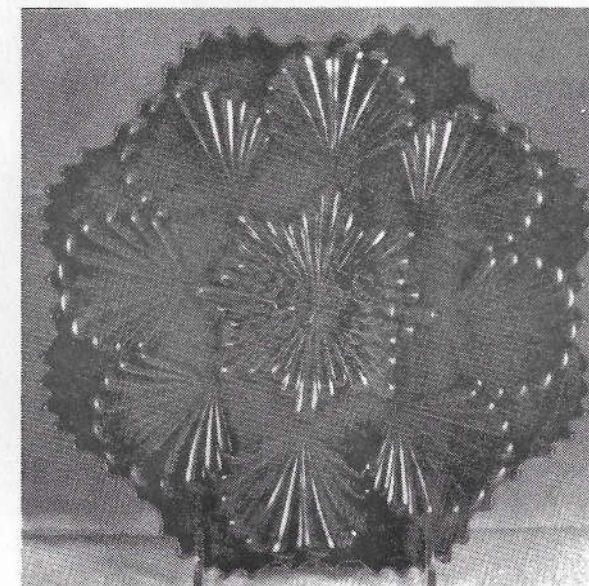


AUTUMN ACORN (Fenton)

Here is another pattern where the bowls are very common and the plates are very rare. This pattern is sometimes confused with the similarly named "Acorn" pattern. I've never seen an "Acorn" plate. Many collectors do not relate the Autumn Acorn plate as so few are known. I consider them more rare than the Carnival Thistle but their desirability may be a notch lower. Neither has the Autumn Acorn had as much publicity. The few that have turned up have been in either amethyst or green.

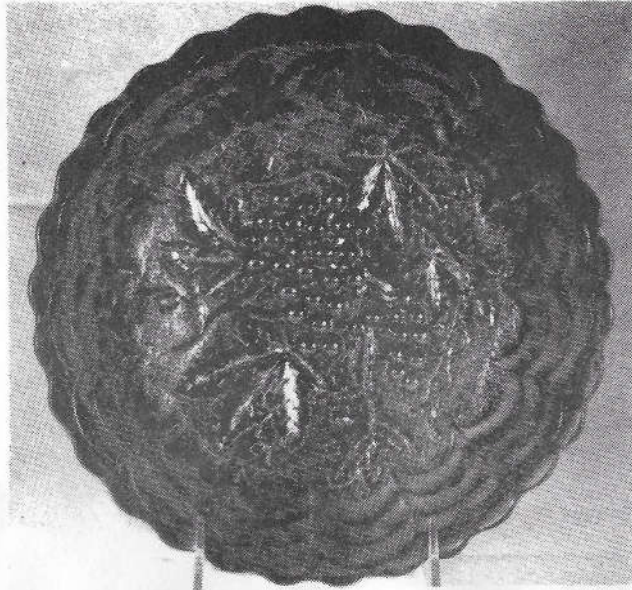
CARNIVAL SHELL (Imperial)

This pattern was made in green, marigold, purple and smokey. The bowls are quite easily found and even though they can be quite handsome, they seldom bring big prices. A purple one sold for \$52.50 at the Mello auction in August 1983. The plate, however, is a different matter. When the Corrothers' sold part of their collection in 1980, plates in smokey and marigold sold for \$250 each and the purple brought \$275. They would no doubt bring more today.



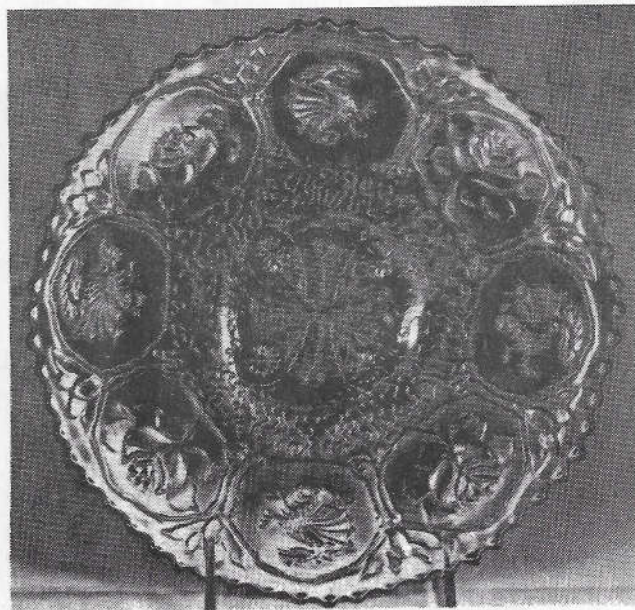
IMPERIAL GRAPE (Imperial)

In bowls this is one of the most available patterns in Carnival. The 6" plates also pop up quite often but the 9" plate is a toughie. Now and then a green or a marigold will turn up but the purple ones are extremely difficult. It is no surprise that collectors can be confused by certain shapes in patterns as common as Imperial Grape. This 9" purple plate is a good example. One sold for \$275 from a private list in August of 1982 and I consider that a bargain.



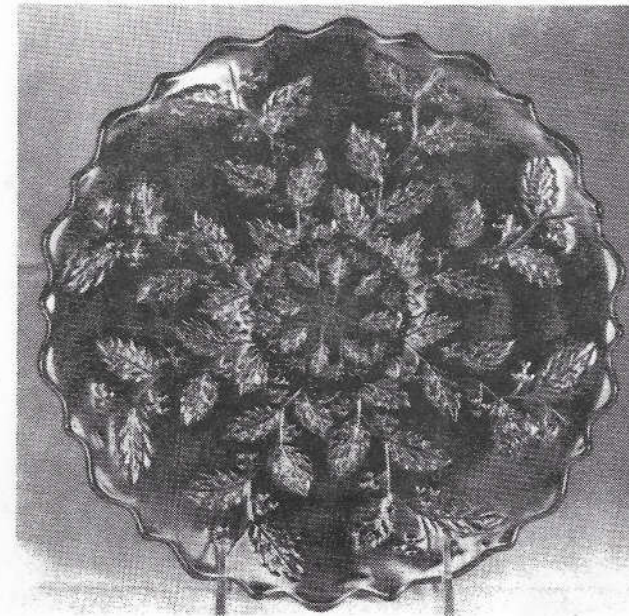
OPEN ROSE (Imperial)

I have always been confused as to whether this is Lustre Rose or Open Rose. The experts tell me the 9" plate is Open Rose. Which ever it is, the bowls are easily found in purple, green, amber, marigold and clambroth. When it comes to the 9" plates, however, we are in a different ball-game. They are desirable in any color but in purple they are gorgeous and down right rare. In my years of collecting, I believe I haven't seen more than 3 or 4 of these purple plates. Value is \$250-300. Worth more.



DRAGON & LOTUS (Fenton)

Here is another excellent example of common bowls and rare plates. In the case of this pattern, it must be pointed out that many of the bowls are also rare. Included in the list of rare bowls would be red, amethyst opal, peach opal, aqua opal, lime green opal and iridised milk glass. The regular colors like marigold, green, blue and amethyst are readily available. Collar base plates have turned up only in marigold and blue. They are extremely rare and will sell in the \$750-1000 range. A couple of very rare spatula footed plates are also known.

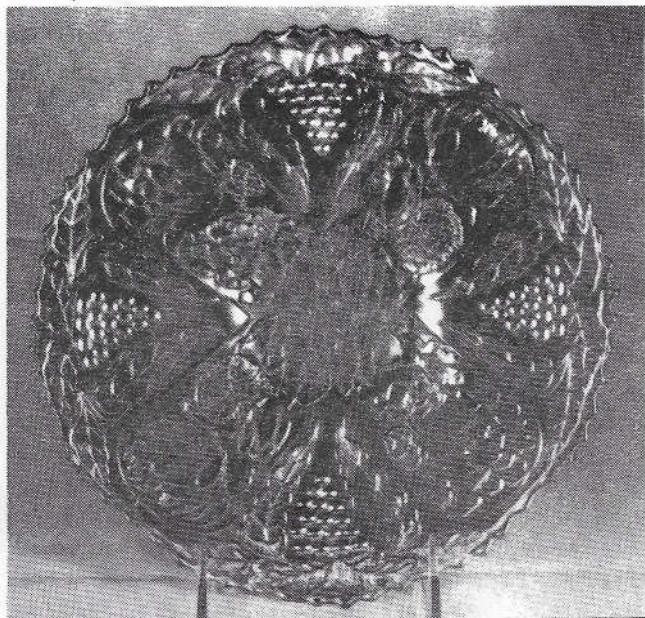


CARNIVAL HOLLY (Fenton)

The plate in this pattern is an akward size as it measures about 9 1/2". This is too small for a chop plate (10" or more) but larger than the standard 9" plate. Bowls in marigold, green, blue, amethyst, white and clambroth are quite readily available but in red or blue opal they are rare. Plates in the usual colors are also quite common but in red (2 known), green or amethyst they are rare, beautiful and expensive. Visitors have sometimes singled out a green Carnival Holly plate as one of the most beautiful pieces in our collection.

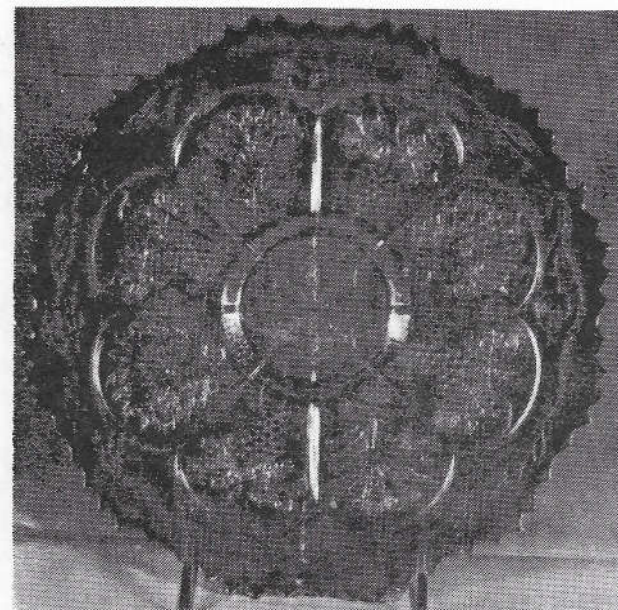
LOTUS & GRAPE (Fenton)

Most collectors are familiar with this pattern as a bowl or a bon-bon but are surprised to see it as a 9" plate. Only the red bon-bon and the persian blue bowls are rare but the plates are rare in any color. They are handsome, showy pieces and command big prices. They come in blue, marigold, amethyst and green. A green one sold at the 1983 HOACGA auction for \$600 and one in amethyst brought \$500 at the September 1983 Carroll auction. The blue will sell for much the same price and the marigold a touch less.



PEACOCK & GRAPE (Fenton)

These bowls in marigold, green, amethyst and blue must have been good sellers as they were made by the thousands and are easily found today. In red, peach opal, lime opal or iridised milk glass they are rare and expensive. Not many plates were made and they must be considered rare. I have seen them in marigold, amethyst, blue and green. A blue one sold for \$370 at the 1981 HOACGA auction. These plates and bowls were made as both collar based and spatula footed pieces.



VINTAGE (Fenton)

The bowls in this pattern (except for red) are common and easily found. The same is true of the 7 1/2 to 8" plates. The 9" plates are something else. To my knowledge, only 3 are known, one in marigold and two in amethyst. The marigold one shown here sold at a private sale for \$225 about 3 years ago. I'm sure that it, as well as the amethyst ones, would bring considerably more on today's market. There are 10" bowls in this pattern, but to my knowledge, none were flattened into chop plates.



The ten examples we have covered here in this "rare plates, common pattern" study were selected because of the big variations in value between the bowls and plates. There are many other patterns which could have been selected but were not as the variance is less pronounced. Some of these are Coral, Good Luck, Hearts & Flowers, Embroidered Mums, Concord, Nippon, Greek Key, Three Fruits and Apple Blossom Twigs. These patterns were not used as the difference in value between the bowls and plates is less dramatic. In some instances this was because the bowls are a bit more valuable than the bowls in the ten patterns selected or because the plates in some of the above named patterns are not quite so rare.

The point I hope to have made is that no matter how common and available a pattern may be in one shape or color, it can still be extremely rare and valuable in other shapes or colors.

DON MOORE

=====

PRECIOUS MEMORIES

=====

Every so often we decide it is time to wash up the Carnival we keep inside of our cabinets. Even with the doors closed, a certain amount of dust always manages to get in. It is a job we dread, so sometimes we put it off by telling ourselves it really doesn't need to be done, then after a while we know it does, so we reluctantly begin.

I will admit it makes me a bit nervous to handle some of the dishes we've paid a goodly sum for. What if I accidentally bump two together and knock off a valuable chunk or maybe the warm water causes one to split open right in my hand? All kinds of disasterous thoughts come to mind but as we progress, we begin to remember where we bought many of our pieces. It is surprising that after 20 years of collecting, we can so vividly recall the persons who originally owned our Carnival.

As we worked and reminisced, we were greatly saddened to realize many of those folks were gone or have been out of touch for a long time. It truly was a nice trip back through the years to remember the people we have met through our Carnival.

As well as we love Carnival, after several days of washing shelf after shelf, it gets rather monotonous and I think I'll not take another piece even if it was offered for free. Of course, that thought doesn't last any longer than the first time we see or hear of something we think we have to have.

All the Carnival pieces seem to appreciate the attention and then look back at us with their clean, shiny faces. That is when it seems it all has been worthwhile. The memories it refreshed was reward enough. It has brightened the winter days just as all our good Carnival friends have brightened our lives. How grateful we are for each one.

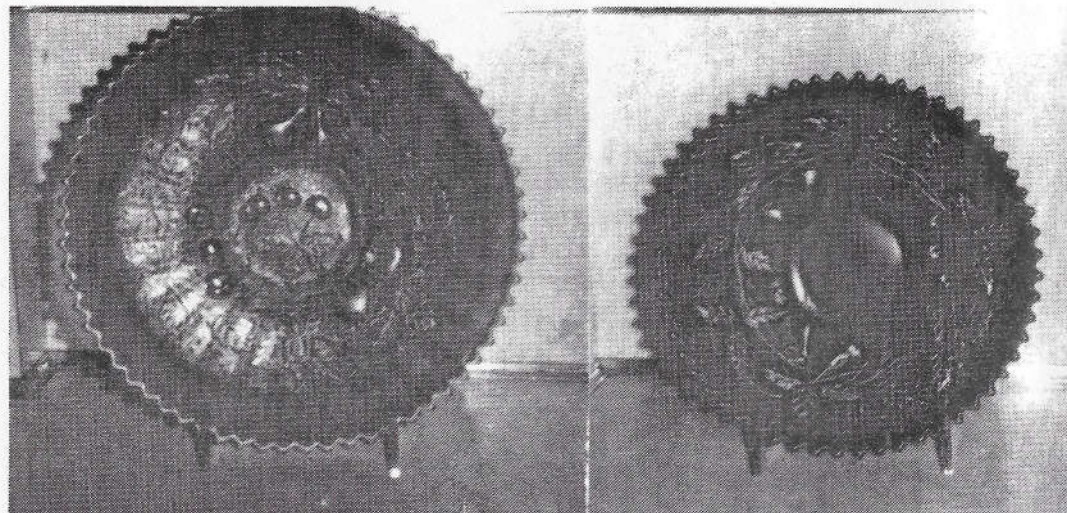
GRACE & BYRON RINEHART
CHARLESTON, WV

=====

RARITIES and SELDOM SEEN

=====

by IVAN & BETTY MITCHELL



The "THREE FRUITS" plate to the left and the "FRUITS & FLOWERS" plate on the right were both manufactured by the Northwood company.

The stippled Aqua Opalescent "Three Fruits" plate shown above on the left is a very close relative to the "Fruits & Flowers" pattern shown on the right. The "Three Fruits" pattern differs in that it has no small flowers and has in the center a cluster of cherries. This collar based 9" plate is rare and one sold at the Hartung auction in October of 1983 for \$875.

The "Fruits & Flowers" 7" plate to the right is in purple. It is often mistaken for a "Three Fruits" plate. As a matter of fact, I purchased this one from a dealer as a small "Three Fruits" plate at about 25% of the going rate. This is a difficult plate to find and it most certainly falls into the "seldom seen" class. This plate will sell around the \$185 bracket and is much sought after.

=====

EDUCATIONAL TUMBLER SERIES

=====

by John & Lucile Britt



LATTICE & DAISY--from DUGAN/DIAMOND

Until the late 1970's, the "Lattice & Daisy" pattern was considered by many Carnival Glass collectors and writers alike to have been made by the Fenton Art Glass Company. Through extensive research by William Heacock and a number of others, this pattern was discovered to be a product of the old Dugan/Diamond factory at Indiana, Pennsylvania. Diggings from that company's old factory site and ads from the Butler Brothers catalogs proved that this was indeed a Dugan/Diamond product. Butler Brothers was a large glass wholesaler during the Carnival Glass era and their old catalogs contain a wealth of information for today's researchers.

The "Lattice & Daisy" pattern was found grouped together with other Dugan/Diamond patterns in some of the old Butler Brothers catalogs. This Indiana, PA company was actually a large producer of Carnival Glass and a good many of their pieces are among some of the finest Carnival Glass that collectors search for today.

We are including in this article a photostatic copy of one of these old ads. Notice that the ad reads that the golden iridescent sets were packed six sets to the barrel (three sets of each style) for 68 cents a set!! This was the wholesale price Butler Brothers charged the retail stores.

Floral and Grape Embossed Ass't. - 2 styles, golden iridescent, 11 in. plain top tankard and 9 in. crimp-d top squat blown jug, cap. 4 gal., stuck handles, SIX 9 oz. tumblers to match. 3 sets each.
 C1868 - Ass'd. 8 sets in bbl., 53 lbs. Set. 68c
 (Total \$4.08)

Note that the other pattern shown in the ad is "Floral & Grape", another Dugan/Diamond pattern. The Fenton Company also made a pattern very similar to this called "Floral & Grape Variet", see the December 1981 HOACGA Bulletin (article #47) for the complete story on these two patterns.

LATTICE & DAISY TANKARD PITCHER and TUMBLER in Cobalt Blue

The "Lattice & Daisy" water pitcher is of the tall, tankard shape. Like the tumblers, they are common in marigold but downright hard to find in blue and amethyst. The tankard shown here has super color and iridescence and is one of the most striking water pitchers that we have ever seen in any pattern. It is owned by Dr. Allan Jones of Bristol, Virginia.



"Lattice & Daisy" is #74 in this Carnival Glass Tumbler Series. Next month we will feature a Fenton tumbler that is known to Carnival Glass collectors as "Scale Band". It is another pattern where tumblers are common in marigold but extremely rare in the dark colors.

JOHN & LUCILE BRITT

=====
R A R I T Y R E P O R T
=====

RICK & JACKIE KOJIS of West Allis, WI are the new owners of a beautiful AQUA DALESCENT PEACOCK & URN MASTER I.C. BOWL. Rick told me he had worked for months on the Pennsylvania collector who owned it, trying to persuade him to sell. Rick finally got the job done and then the man had a difficult time deciding which one (of the TWO he owned) to sell. This now means there are three of these very desirable ice cream bowls in Wisconsin, more than any other state!! Also, I just heard that a Texas couple has had one of these masters for years and only recently has this bit of information been made known to other collectors.

EMIL & DOROTHY CAMPO of Yakima, WA wrote this: "Regarding the unsigned VASELINE BUSHEL BASKET, I also have a basket in this color. TOM BURNS has seen it and could remember seeing only 4 or 5 of these. I purchased my basket at a local Antique store in 1965. Also, does anyone have any idea on how many AO LITTLE BEADS COMPOTES there are around? I have one but haven't seen any info on them, can someone help?"

From James Moore in New York City comes the report of his purchasing a PEARL PEACOCKS BOWL. It is marked with a N and was found in a Brooklyn flea market for a most reasonable sum. This is only the third one of these known to us and all have gold edging and pastel iridescence. NICE GOING JAMES!!

RAY NOTLEY, London, England, reports the following: "Another bowl in PERSIAN BLUE has turned up in the UK. It is in LOTUS & GRAPE and is exactly the same as the one in the Poorman's Tiffany Show. The only Fenton pattern I have not recorded in the UK is Mikado. There IS a GODDESS OF HARVEST BOWL here in a private collection. It is not mine, so please do not send me your money!!"

From JANET KNECHTEL, Canadian Carnival Glass Association, in Ontario comes the following report of members recent finds: IGD DRAGON & LOTUS bowl, LAV BUSHEL BASKET, M CHRISTMAS COMPOTE, SMOKEY PEACOCK & URN master IC, AO FRUITS & FLOWERS bon-bon, R PEACOCK & URN compote, IB HEART & FLOWERS bowl, W PEACOCK @ FOUNTAIN water pitcher and AO PEACOCK @ FOUNTAIN compote. She states: "Most of these pieces were found locally either at shops or antique shows. There is still lots of good Carnival to be found. Who knows what you may find at our first convention this October? Why not come and see?"

AL RETTKE

PAGE 21

PACIFIC NORTHWEST CONVENTION DETAILS

The convention date for the PNWCGC has been set for August 9-11, 1984. We will be holding the convention again this year at the Holiday Inn, Eugene, Oregon.

Many exciting events are planned including the 2nd annual Picnic to kick-off the start of the convention. This proved to be lots of fun at the 1983 convention; so in keeping with the theme of the Pacific NW club's logo (the Fishermans Mug), we will repeat the "Salmon Bake".

If I may be of any help to anyone wishing to make plans to attend the convention, please do not hesitate to contact me.

KAREN ENGEL

Vice-President & Convention Chairman
35292 Oak View Drive, Brownsville, OR 97327

=====
THE LOSS OF JOE OLSON
=====

Another of the Carnival Glass Pioneers has passed away. O. Joe Olson died February 14, 1984.

Joe was instrumental in organizing the first Carnival Glass club, The Society of Carnival Glass Collectors. Although this club did not have a long life, it did bring Carnival collectors together and was the start of the desire to join together as collectors for a common cause.

Joe was much better known for his CARNIVAL GLASS NEWS & VIEWS publication which he published periodically. Joe did a lot of research for his publication and all of his material was given to the Corning Glass Museum for future reference by glass researchers.

Joe's death will leave a large void in the Carnival Glass World. His contributions will help collectors for many years to come.

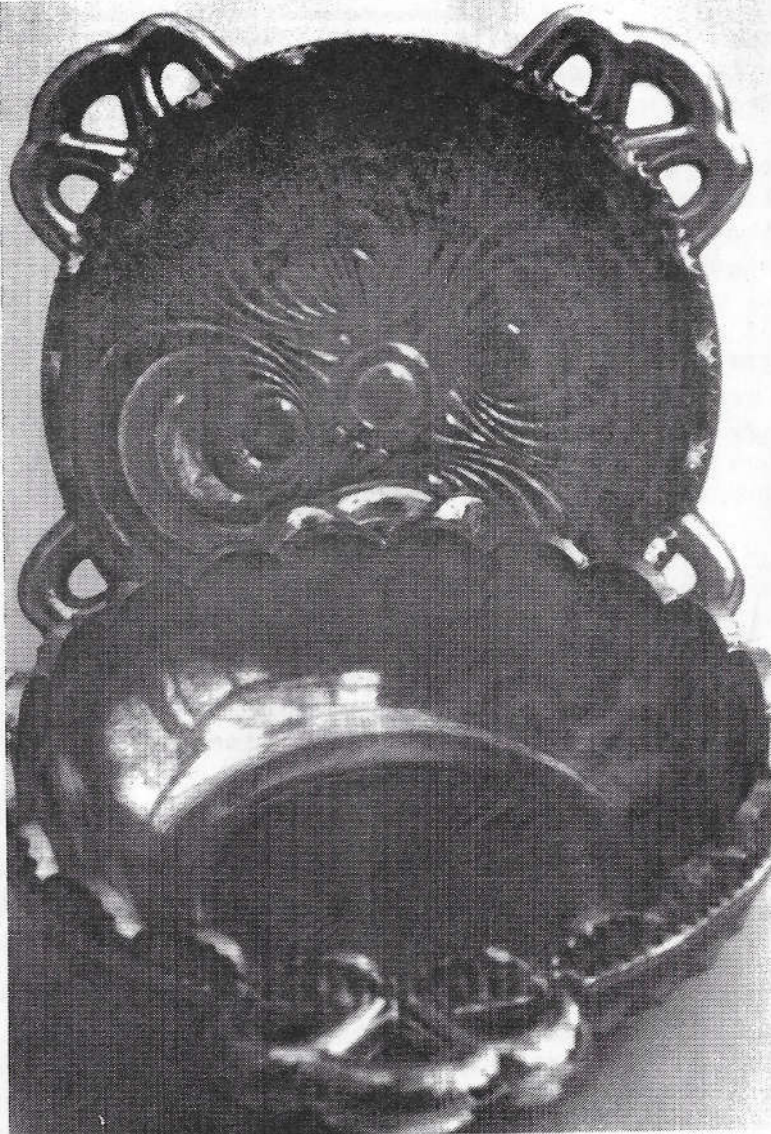
Our deepest sympathy is extended to his wife, Ruth and to their daughter, Christie.

ROSA & BOB GRISSOM

PAGE 22

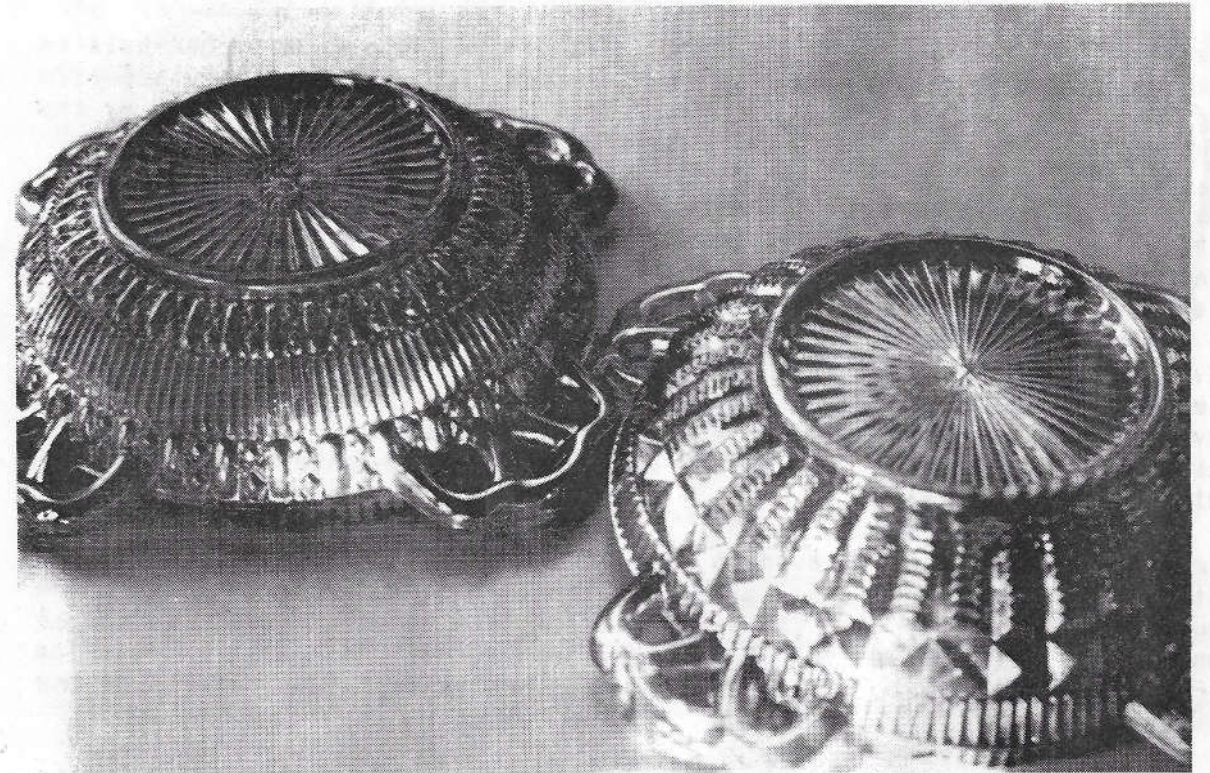
SCROLL EMBOSSED ASHTRAY
AND ANOTHER

I featured the item shown here with the "Scroll Embossed" interior, some time ago. The companion ashtray you see with it is a new addition to the known Sowerby output. The interior is plain and the exterior pattern is quite different from the one with the "Scroll Embossed" show pattern. It has a peacock head trademark but is not unknown as it has turned up on a small nappy with the "Scroll Embossed" pattern!! Sowerby made two "Scroll Embossed" plungers and this is the smaller of the two. From the legal point of view, they did not copy the pattern exactly, which is a curious thing to bother about as Imperial had never registered the design in the UK. Even if they had, the legal protection would have expired by the time Sowerby copied it. The exterior pattern on the plain ashtray is very like "File", but not quite.



The small Sowerby version of "Scroll Embossed" has only two central rings. (Imperial used four) Their large version was only used in the Diving Dolphins bowl. Some Imperial "Scroll Embossed" items (bowls, small plates and comports) have odd, unlisted designs as exteriors but the moulds used do match exactly pieces found with KNOWN Imperial exteriors such as "File". I talked at length to a retired mould-maker earlier this year and the subject of moulds came up. I followed his advice and a quick check with callipers, or dividers, soon settles a lot of arguments.

However, what can we call this little relative of the "Scroll Embossed" ashtray? Absentee Scroll? Invisible Emboss? "Pyramid & File" sounds OK, so we'll settle for that.



TO THE RIGHT, PREVIOUSLY UNLISTED SOWERBY EXTERIOR NAMED "PYRAMID & FILE".

SUMMARY OF KNOWN PIECES; "SCROLL EMBOSSED" by Sowerby:

1. Nappy with Pineapple exterior
 2. Nappy with Pyramid & File exterior
 3. Ashtray with Jewelled Peacock exterior
(The small mould was used for the above items, 2 circles in centre)
 4. Interior of Diving Dolphins bowl. (Large mould)
- EVERYTHING ELSE WAS MADE BY IMPERIAL.

The Sowerby items are know only in marigold, amethyst, and the occasional blue. I have never seen any Sowerby carnival in green and very little green glass was made at Sowerby between 1926 and 1930. Documentation of these four years is remarkably complete. Naturally, if anyone has any green Sowerby items, then please drop me a line.

(Copyright 1984, RAY NOTLEY)

=====

CARNIVAL GLASS JAMBOREE REPORT

=====

The Third Annual "Lose Your Heart To Carnival Glass Jamboree" held in Lakeland by the Tampa Bay Carnival Glass Club on February 10th & 11th turned out to be the largest Carnival Glass event in the history of the Southeast.

Festivities started with an open house hospitality room Thursday evening with 65 in attendance. On Friday, a series of informative programs were conducted. Robert Vining discussed aqua opalescent carnival glass and displayed 12 beautiful pieces including a hat pin holder. Emma Tilton had an extensive display of glass which she discussed. Christ Harnish revealed the secrets of manufacturing carnival glass jewelry. Chris did a pretty effective job as he later reported that his jewelry sales surpassed any of his previous totals at major conventions! In the afternoon session, John Britt, ably assisted by Lucile, presented an outstanding color slide presentation.

The banquet on Friday evening was attended by 70 guests. Art Smith introduced the celebrities present. Many of the speakers enjoying the Southern hospitality and the warm sunny climate suggested that Florida be considered as a site for a National convention. The effervescent Tom Burns was the guest speaker and professional entertainment followed the banquet.

On Saturday, the huge banquet room was filled with 32 tables of sparkling carnival glass. Bargaining and selling was at a fast pace. The top single item exchanged hands at \$1900. During the day, hundreds of glass admirers viewed the displays. Tom Burns held an auction Saturday night. For those with any energy remaining, an open house was held Sunday by Dorothy and Art Smith.

The Centel Cable TV company interviewed Bob Vining, John Britt and Art Smith on Friday. On Saturday they took video pictures of all the displays and Art Smith helped interview many of the collectors. The one hour show will be shown twice on local TV February 21 and 23.

ARTHUR I. SMITH

**** MORE ABOUT THE JAMBOREE ****

Howard & Marian Robinson along with Betty & Steve Palmer, members of the New England Carnival Glass Association, attended the Carnival Glass Jamboree in Lakeland and would encourage anyone seriously interested in Carnival Glass to avail themselves to the exposure one gets from attending these functions.

This being our first, outside of our area, we were delightfully amazed at the cordiality and knowledgeability of the people we met such as John & Lucile Britt, Bob & Kitty Vining, Emma & Dick Tilton and of course Art Smith, Chairman of the Jamboree.

We learned more in three days about Carnival Glass than we had in three years. The presence of Tom Burns and his words of wisdom were also much appreciated, as was the opportunity of participating in one of his auctions. All in all, it was a real grand experience.

**** NOTICE ** NOTICE ** NOTICE ****

NEW ENGLAND CARNIVAL GLASS ASSOCIATION'S MINI-CONVENTION

Will be held September 8-9, 1984, at the American Motor Inn in Sturbridge, Mass., and space will be limited and on a first come, first served format. Rooms will be available for display and/or sale plus private motel rooms will be located on the same floor. On Sunday, September 9th, Tom Burns will conduct an auction. For further information, contact:

HOWARD O. ROBINSON
8 Stilwell Street
Great Barrington, Mass. 01230
413-528-1359

P.S.: I have a very rare MILLERSBURG CHERRY MILK PITCHER in Marigold with beautiful iridescence. It is in perfect condition and I would like to trade it for Aqua Opal or Red pieces. If you are interested, please contact me at the address above.
H.R.

THE FOLLOWING LETTERS WERE SENT TO THE NOTEBOOK CHAIRMAN, BOB GRISSOM:

Dear Sir,

I am enclosing a check for \$4.50, please send me the notebook section on Enameled Water Sets when it is ready.

I think the Notebook is wonderful.

Thank you, Mrs. Hazel Tuthill

AND ALSO:

Dear Mr. Grissom,

Enclosed is a money order for \$3.50 plus \$1.00 postage. Please send me the second inserts for enameled water sets.

I really like the notebook and find it very useful in identifying patterns.

Sincerely, Ethel Newcombe

TO ORDER INSERTS:

Send a check or money order payable to H.O.A.C.G.A. in U.S. funds to:
DIANA TREFF-SECRETARY, 13646 Leavenworth Road, Kansas City, KS 66109.

Cost of the 1984 inserts (3rd set on Water Sets) is \$3.50 plus \$1.00 for postage. Cost of the ENTIRE notebook including the new set is \$14.00 plus \$2.50 postage. It would be helpful if you used your convention pre-registration form to order them. If you are going to the convention, you may save the postage cost.

THESE WILL NOT BE SHIPPED UNTIL AFTER THE H.O.A.C.G.A. CONVENTION IN APRIL

AIR CAPITAL CARNIVAL GLASS CLUB

The February meeting of the Air Capital Carnival Glass Club was at the home of Linda and Richard Bassi on February 12. Our attendance for the meeting was small but we enjoyed our afternoon in their home.

Convention Chairman, Roland Kuhn, reported a contract had been signed with the motel for our convention in October. Mr. Ray Notley from London, England will be our guest speaker and many of you will remember the talk he gave at the 1983 HOACGA convention.

Several of our members are planning to attend the Texas Club's Ranger Round-Up in Houston and we will be waiting to hear their report.

Our next meeting will be held in the home of Frank & Geneva Spangler, Newton, Kansas. There will be a covered dish meal after the meeting. Hope to see all of you there!!

DONALD E. KIME, Secretary ACCGC

NEWS FROM TEXAS

The Charlie Drake Ranger Round-Up to celebrate the Texas Carnival Glass Club's 5th anniversary was at the Houston Airport Hilton on February 19th.

Activities of the day included a Texas Style Buffet Breakfast, glass for sale & display and an afternoon auction conducted by Tom Burns. At 6PM, President Don Staley conducted a short business meeting and the following were elected officers of the club: Bulletin Editor: Effie Reece, Research Editor: Eleanor Hamilton, and Secretary: Jane Brown.

Approximately 60 people enjoyed the Chuck Wagon buffet dinner. After dinner, John & Lucile Britt entertained us with a slide presentation of their past and present glass collection. There were some humorous comments on how they acquired some pieces.

The hospitality room was open for refreshments during the afternoon and evening. Our thanks to those who came from out of state to show and sell glass.

JANE BROWN, Secretary

OLD CARNIVAL GLASS LIBRARY

CARNIVAL GLASS RARITIES--A color line approach. Lists the top 10 rarities in each color--plus complete rarities price guide--40 pages of black and white pictures--special section on whimsies--\$8.50 pp. Also THE SHAPE OF THINGS IN CARNIVAL GLASS, 110 pages, 200 items in full color--\$9.95. Don Moore, 2101 Shoreline Drive, Apt 462, Alameda, CA. 94501.

CARNIVAL GLASS SERIES--by Marion T. Hartung. Each book has 100 different patterns--10 books in the series, books 1,2 and 3--\$3.00 ea, books 4 thru 10--\$3.50 ea. 1981-82 price guide--\$5.00 pp, Northwood Pattern Glass--clear, colored, custard and caranival--\$9.95, plus .50 postage. Order from Ione Henshaw, 903 East 6th Ave., Emporia, KS 66801.

CARNIVAL IN LIGHTS--A full color book on Carnival Lighting, including Gone With The Wind Lamps, Candle Lamps and shades--price guide included--\$11.95 plus postage, Helen Greguire, 103 Trimer Road, Hilton, NY. 14468.

CARNIVAL GLASS TUMBLERS--Author Richard Owens--order from Don Brown, Wallace--Homestead Book Company, 1912 Grand Ave., Des Moines, IA. 50303.

THE STANDARD ENCYCLOPEDIA OF CARNIVAL GLASS--REVISED EDITION NOW AVAILABLE, many new photographs and expanded European carnival section--\$24.95 (with new price guide), NEW PRICE GUIDE includes eight color columns, size 8x11 - \$4.95, IMPERIAL CARNIVAL GLASS--THE EARLY YEARS--\$9.95, FENTON CARNIVAL GLASS--THE EARLY YEARS--\$9.95, MILLERSBURG THE QUEEN OF CARNIVAL GLASS--\$8.95, NORTHWOOD, KING OF CARNIVAL GLASS--\$9.95, Bill Edwards Author, Collectors Books, Paducah, KY.

CARNIVAL GLASS--by Ray Notley, Shires Album # 104. ISBN 0 85263 637. Price is only \$3.55 including postage. Send to 7 Hills Books, 519 W. 3rd. Street, Cincinnati, OH. 45202.

CARNIVAL GLASS WORLDWIDE--by M. Quinton-Baxandale. 200 Colour Photographs * Pattern Name Index * Exclusive Research * Clubs Worldwide Listed * Order from: CARNIVALIA PUBLICATIONS, PO Box 1, LOSTWITHIEL, CORNWALL, L22 0YZ, ENGLAND US \$13.50 (surface mail) US \$15.00 (airmail) Payment with order please, by International Cheque or Money Order.

FENTON GLASS--THE FIRST 25 YEARS--144 pages, 72 in full color, more than 400 items pictured in Fenton's carnival and iridescent "stretch" colors, rare catalogue reprints (some in color), a complete history of the factory's early years, from 1907 to 1932, \$15.95 for softcover edition with price guide, \$20.00 for limited edition hardbounds. Order from the author, William Heacock, P.O. Box 27037, Columbus, OH. 43227.

Angela Hallam's 52 page fully illustrated paperback--first book to tell about the English-made Carnival--\$3.35 surface postage, air mailed \$4.35 Order from Wise Books, 82 Chart Lane, Reigate, England, RH2 7EA.

CARNIVAL GLASS AUCTION PRICE REPORT--1984 Edition. This years edition will have approximately 4000 entries from major auctions in 1983. Single copy price is still \$8.00 US postpaid (for overseas delivery, add \$1.00). Order from: Al & Wendy Rettke, 14226 E. 143rd Lane, Burnsville, MN 55337 PLEASE NOTE: COPIES WILL NOT BE MAILED UNTIL MAY 1, BUT YOU MAY PICK THEM UP IN PERSON AT THE HOACGA CONVENTION.

OTHER REFERENCE MATERIAL

Presznick's "Encyclopedia of New Carnival and Iridescent Glass". A great reference book with color plates galore and prices, \$19.95. Reichel's "Modern Carnival Glass", 100 illustrated pages of Carnival made since the 1960's. Volume 1, \$4.00, Volume 2, \$4.95, Price Guide for both volumes \$2.50. Add \$2.00 for shipping and insurance. Theodore A. Parent, Box 596, RD 1, Canfield, OH, 44406.

"Encore by Dorothy" books 1 and 2. A series of books on new reproduced Carnival Glass, giving information on the patterns and colors that are being reproduced. Price for each book is \$7.70 postpaid. Be sure to state which book you want. Dorothy Taylor, Box 11734, Kansas City, MO, 64138.

"CARNIVAL GLASS" educational brochure with color photographs. Available to interested collectors or dealers who wish to better describe to and inform the public about our glass. Free of charge from the American Carnival Glass Association. Contact Ruth Schinestuhl, 55 Natalie Terrace, Absecon, NJ 08201.

POLICY FOR ADVERTISING IN THE H.O.A.C.G.A. BULLETIN

1. ALL ADVERTISEMENTS, ANNOUNCEMENTS, LETTERS OR ANY OTHER ITEM TO BE PRINTED MUST BE RECEIVED BY THE BULLETIN SECRETARY BY THE 1ST OF THE MONTH TO INSURE BEING PUBLISHED IN THAT MONTHS BULLETIN.
2. MEMBER FAMILIES MAY ADVERTISE 10 FOR SALE AND 10 WANT ADS PER MONTH.
3. ONLY OLD CARNIVAL GLASS ITEMS OR H.O.A.C.G.A. SOUVENIRS WILL BE PUBLISHED.
4. DAMAGE OR MANUFACTURING FLAWS SHOULD BE NOTED.
5. ALL FOR SALE ITEMS MUST BE PRICED, NO BID ITEMS WILL BE PUBLISHED.
6. A 5 DAY RETURN PRIVILEGE AT BUYERS EXPENSE PROVIDING IT IS NOT AS ADVERTISED.
7. ALL POSTAGE AND INSURANCE IS EXTRA, TO BE PAID BY BUYER.
8. ALL ADS MUST BE LEGIBLE, OR THEY WILL NOT BE PRINTED.
9. THE H.O.A.C.G.A. DOES NOT ACCEPT RESPONSIBILITY FOR THE ACCURACY OF ANY ADS.

FOR ACCURACY OF DESCRIPTION, THE FOLLOWING COLOR KEY IS RECOMMENDED:

A--AMETHYST	G--GREEN	P--PURPLE
AMB--AMBER	HA--HONEY AMBER	PRL--PEARL-PASTEL ON MILK GLASS
AO--AQUA OPALESCENT	IB--ICE BLUE	PM--PASTEL MARIGOLD
AQUA--LIGHT BLUE-GREEN	IG--ICE GREEN	PO--PEACH OPALESCENT
B--BLUE	IGO--ICE GREEN OPALESCENT	R--RED
BO--BLUE OPAL OR BLUE OPAQUE	LAV--LAVENDER	RA--AMBERINA
CLN--CLAMBROTH	M--MARIGOLD	SM--SMOKEY
EB--ELECTRIC BLUE	MNG--MARIGOLD ON MILK GLASS	VAS--VASELINE

NOTE: IF YOU WISH TO DESCRIBE A PIECE AS LIGHT OR DARK, USE THE BODY OF THE AD.

PLEASE USE THE FOLLOWING:

EI--EXCELLENT IRIDESCENCE GI--GOOD (AVERAGE) IRIDESCENCE LI--LIGHT IRIDESCENCE

EXAMPLES:	AO	EI	GOOD LUCK PLATE, ONE POINT BROKEN & REPAIRED	375.
	M	LI	PEACOCK AT THE FOUNTAIN 7PC WATER SET, PITCHER HAS FLAKE	225.
	MNG	GI	PEACOCK & GRAPE BOWL	360.
	A	GI	WISHBONE TUMBLER, HEAT CHECK, LIGHT AMETHYST	47.50

IT WOULD BE GREATLY APPRECIATED BY EVERYONE IF YOU WOULD USE THESE CODES AS SUGGESTED.

=====

GLASS FOR SALE

=====

JUDITH MILLER, 55 MILL PLAIN ROAD 25-4 WESTWOOD, DANBURY, CT 06811
phone evenings: 203-794-0356

M	EI FROSTED BLOCK pickle dish	30.
M	EI STAR & FILE large compote	40.
M	EI CORNUCOPIA vases, perfect match, light marigold, the pair	60.
G	EI STIPPLED RAYS 2 handled bon-bon	25.
A	EI BIRDS & CHERRIES compote	35.
M	EI ORANGE TREE ice cream dish, clear stem	20.
P	EI GRAPE & CABLE w. Thumbprint stemmed ice cream dish	65.
M	EI CRACKLE pitcher & one tumbler - dome base	65.
M	EI BUTTERFLY & BERRY master berry bowl, FANTAIL interior	70.
M	GI CRACKLE covered candy dish	20.

JAMES & JUDY KEY, RT. 1 BOX 153-B, MARIANNA, ARK 72360
phone: 501-295-6770

G	EI GRAPE & CABLE master berry bowl, Basketweave exterior, N	95.
B	EI BLACKBERRY OPEN EDGE basket	40.
M	EI BLACKBERRY SPRAY hat	25.
B	EI ORANGE TREE creamer & sugar, each	50.
M	EI POND LILY bon-bon	30.
M	EI BULLSEYE & BEADS 11 3/4" vase	25.
M	EI BUTTERFLY & BERRY berry set, 5 pieces	130.

JACK STEWART, 99 ASTER CIRCLE, WEYMOUTH, MASS 02188
phone anytime: 617-337-1304

P	EI JEWELLED HEART bowl	40.
M	EI CORAL SHELL lampshade, color is a pinky/marigold	35.
YELO	EI THREE IN ONE low bowl, color is yellow	35.
B	EI DOUBLE LOOP open sugar, SCARCE	125.
W	EI WISHBONE epergne, base only	135.
IB	EI BROCADED ACORNS two handled bowl	30.
	EI BROCADED ACORNS two handled flat tray, orchid colored	39.
P	EI SINGING BIRDS mug	50.
IG	EI WISHBONE epergne, base only, expert base repair, very rare	300.
SM	EI DOUBLE SCROLL large oval bowl	

ERNEST & LYDIA CAUDLE, RT. 1 BOX 87, STATE ROAD, NC 28676
phone: 919-874-2519

B	EI LATTICE & GRAPE 7 piece water set, nice	645.
M	EI GRAPE & CABLE 7 piece water set	325.
A	EI WISHBONE footed plate,, rare	279.
M	EI STORK & RUSHES 7 piece water set	325.
P	EI GRAPE & CABLE cologne with stopper	195.
M	EI GRAPE & CABLE cologne with stopper	139.
P	EI DIAMOND LACE pitcher, nice	165.
B	EI STAG & HOLLY large sized bowl	175.
M	EI HORSES HEADS plate, extra nice	135.
P	EI DANDELION mug	250.

LEE BRIIX, RT. #1 BOX 68, HENNESSEY, OK 73742
phone after 5PM: 405-853-2276

P	EI DIAMOND LACE 10" bowl	40.
M	GI HORSESHOE shot glass	26.
M	EI WAFFLE BLOCK punch cups, have 4, each	8.
M	GI ORANGE TREE small compote	18.
M	EI LUSTRE & CLEAR mini-compotes, have 4, each	4.
M	GI STORK & RUSHES mug	15.

The following hatpins have under-edge roughness but were made that way:

P	EI CATTAILS hatpins, have 2, each	20.
P	EI TOP O' THE WALK hatpin	20.
P	EI SCARAB hatpins, have 2, each	20.

CHARLES ADAMS, 2211 SUNSET BLVD., LOS ANGELES, CA 90026
phone either: 213-483-7755, 213-384-5001

M	EI TWINS fruit bowl	75.
M	EI OCTAGON goblet, have 2, each	50.
A	EI FOOTED SHELL, the larger one	40.
A	EI GRAPE & CABLE 9" spatula footed plate, Fenton	130.
B	EI GRAPE & CABLE 7 1/2" round spatula footed bowls, each	65.
VAS	EI ACORN 7 1/2" low fluted bowl	115.
P	EI WREATHED CHERRY creamer, oxblood	65.
G	EI BIRDS & CHERRIES banana boat shaped bon-bon	75.
	EI PERSIAN MEDALLION 6 1/4" plate on black glass, looks red when viewed through a strong light	195.

SASE FOR 4 PAGE LIST OF OLD CARNIAL FOR SALE

BERNIE MAHN, 1001 ROCK ROAD, DESOTO, MO 63020
phone: 314-586-6226

A	EI BEADED SHELL mug	95.
M	EI DUTCH 8" plate	20.
M	EI BLOSSOM & SPEARS 8" plate	15.
M	EI THISTLE & THORN 3 footed bowl	35.
P	EI FINE RIB 6 piece berry set, N	160.
A	EI GRAPE & CABLE 9" three footed plate	85.
A	EI PILLOW & SUNBURST bowl	35.
A	EI SPRINGTIME 5" bowl, N	45.
AMB	EI DIAMOND LACE shallow 9" bowl	48.

MARY HERREN, 520 SOUTH BERRY, MORGANFIELD, KY 42437
phone after 5PM: 502-389-3121

P	EI IMPERIAL GRAPE wines, great color, \$20 each or all 8 for	150.
G	EI WREATH OF ROSES compote, super	33.
B	EI ENAMELED CHERRIES ground tumbler	12.
W	EI FINECUT & ROSES w Fancy interior candy dish, chips 2 feet	20.

CHRIS KLUTTS, RT. #5 BOX 428, MUSKOGEE, OK 74401
phone: 405-946-7497

P	EI HOBSTAR candlesticks, old & mint, price for the pair	245.
---	---	------

SAL AARTSMA, BOX 1132, PATERSON, NJ 07509
phone after 5:15PM: 201-278-3630

G	EI DRAGON & LOTUS bowl	35.
P	EI FLYING BAT hatpin	30.
P	EI DRAGON FLY hatpin	20.

NORMA MORRISON, 3912 PENNSYLVANIA AVE., EUREKA, CA 95501
phone: 707-443-1319

G	EI IMPERIAL GRAPE wine glass, gold Helios iridescence	25.
---	---	-----

EVA BACKER, 12 SHERWOOD ROAD, WEST HARTFORD, CN 06117
phone: 203-233-3761

M	EI VINTAGE BANDED mug	25.
G	EI ACORN BURRS punch cups, have 3, each	35.
M	EI MILADY powder jar	65.
M	EI WREATH OF ROSES/VINTAGE INT. punch cups, 1 chip, 3 cups for	35.
M	EI 474 punch cups, have 4, each	25.
M	EI ORANGE TREE punch bowl, base and one cup	125.
A	EI VINTAGE plate	110.
A	EI BLOSSOMTIME compote, scarce	100.
G	EI SINGING BIRDS small berry bowls, have 5, each	35.
A	EI S-REPEAT punch base and 4 cups, 2 small pinheads on base	240.

RALPH A. PASTORELLI, 1028 JEFFERSON AVE., UTICA, NY 13501
phone after 3:30: 315-732-4902

M	EI DOUBLE STEM ROSE deep bowl, small scratch	25.
M	EI CANADA DRY bottles, have 3, \$12 each or all for	30.
M	EI WIDE PANEL candlesticks, pair	40.
M	EI FASHION punch base	30.
M	EI KOKOMO ROSE bowl, spot in base	35.
P	EI PILLOW & SUNBURST bowl	25.
M	EI HOBNAIL SODA GOLD cuspidor	40.
M	EI TWINS 2-piece fruit bowl, small chip	50.
G	EI BLACKBERRY BRAMBLE compote	35.
G	EI WIDE PANEL bowl and 2 candlesticks	75.

SASE FOR LIST OF CARNIVAL FOR SALE

EDWARD L. HENDERSON, 1111 N. COLLEGE, STUTTGART, ARK 72160
phone: 501-673-8757

M	EI PEACOCK & GRAPE 7" bowl, chip on bottom of base	30.
C	EI PERSIAN MEDALLION 8" bowl, tiny crack	15.
M	EI RIBBED 9" bowl, light color	35.
M	EI ROCOCO 5" bowls, have 4, each	10.
A	EI STIPPLED RAYS 9 1/2" bowl, N, minute chip on bottom of base	30.
G	EI STIPPLED RAYS 8 1/2" bowl, N	50.
A	EI TWELVE POINT 8" bowl	40.
M	EI PANTHER master berry bowl, minute crack	50.
M	EI ROSE covered butterdish, color is light marigold	40.
M	EI DIAMOND compote with 4" mouth and chip on rim	10.

MARY KESTERSON, 3020 MESA ROAD, WILLOW PARK, TX 76086
phone: 817-441-8410

M	EI PEACOCK & URN 9 1/2" bowl, MLSBG	125.
P	GI TOWN PUMP	425.
PO	EI FISHERMAN'S MUG	1095.
W	EI BEADED SHELL MUG	1225.
P	EI DANDELION MUG	285.
W	EI MIRRORED LOTUS rosebowl, rare	525.
IG	EI OPEN EDGE basket, Fenton	85.
M	EI BROOKLYN BRIDGE bowl	275.
PO	EI FANCIFUL bowl	165.
IB	EI NIPPON bowl	175.

RAY HITCHCOCK, RR1 BOX 301, WINTERSET, IA 50273
phone: 515-462-2074

AQUA	EI NIPPON bowl, piecrust edge, rare color	215.
A	EI HOLLY plate, rare color	200.
M	EI INVERTED COIN DOT tumblers, each	30.
B	EI THREE FRUITS Variet, 12 sided plate	105.
W	EI PERSIAN GARDEN master ice cream bowl, very frosty	145.
G	EI CORN VASE, 1/4" heat check in base, a beauty	225.
M	EI BUTTERFLY & BERRY butterdish	85.
A	EI BOUTONNIERE compote, super radium finish	50.
P	EI VICTORIAN bowl	130.
W	EI HEARTS & FLOWERS compote	125.

DICK WETHERBEE, 847 STAFFORD STREET, ROCHDALE, MA 01542
phone: 617-892-4420

PO	EI HONEYCOMB 7" card tray, Beads & Flowers exterior	65.
B	EI FRUITS & FLOWERS 2-handled stemmed bon-bon	95.
M	EI OPEN ROSE 7 piece berry set, all matching	85.
G	EI APRIL SHOWERS/Peacock Tail interior 11 1/2" vase	28.
PO	EI FLOWERS & FRAMES 9" dome footed bowl, opal spot	55.
P	EI PANSY 9" ruffled bowl	35.
B	EI ACORN 6" bowl, deep	22.
M	EI STAR & FILE 6" flat plate, hard to find, pretty	25.
G	EI STRAWBERRY 9" plate	95.
P	EI WREATH OF ROSES 2-handled stemmed bon-bon	45.

SEND SASE FOR LIST OF 60 ADDITIONAL PIECES OF OLD CARNIVAL

EDNA K. BURNS, 145 UNION STREET, SOUTH WEYMOUTH, MASS 02190
phone: 617-335-3178

M	EI GOLDEN HARVEST wine decanter with original stopper	75.
M	EI GOLDEN HARVEST stemmed wine	18.
G	EI BUTTERFLIES 2 handled bon-bon	45.
B	EI ORANGE TREE shaving mug	50.
M	EI ORANGE TREE large footed fruit bowl	70.
M	EI ORANGE TREE mug	25.
PO	EI STIPPLED PETALS dome footed 9" bowl	68.
PO	EI HOLLY handled nappy	48.
A	EI PINECONE small sauce, not ruffled	35.
AMB	EI BEADED BULLSEYE vases, rare, unlisted color, for the pair	150.

DARLENE YOHE, PO BOX 343, STUTTGART, ARK 72160
phone: 501-673-3437

B	EI ORANGE TREE punch cups, have 3, each	22.
B	GI ORANGE TREE punch bowl, base and 2 cups, each piece has a crack, price for all pieces is	25.
P	EI SINGING BIRDS spooner	85.
P	GI WISHBONE lily for epergne	45.
M	GI GRAPE & CABLE covered sugar, some roughness on thumbprints	60.
P	LI GRAPE & CABLE hatpin holder	125.
P	EI ACORN BURRS covered butter	185.
W	EI GRAPE ARBOR tumbler	115.
IB	EI GRAPE ARBOR tumbler, tiny nick on base	70.
P	EI GRAPE & CABLE water pitcher	240.

BARBARA NELSON, RFD 4 BOX 155, LACONIA, NH 03246
phone: 603-293-7246

M	EI ORANGE TREE loving cup, dark	120.
M	EI PEACOCKS ON FENCE 8 1/2" bowl, piecrust edge, N	90.
M	EI STRAWBERRY 8 1/2" stippled piecrust edge bowl, N	40.
M	EI THISTLE 6" vase, English	30.
G	EI WREATH OF ROSES footed bon-bon	40.
P	EI CHERRY 8 1/2" footed bowl, candy ribbon edge, Dugan	60.
P	GI GRAPE & CABLE tumbler	20.
A	EI THREE FRUITS 8 1/2" spatula footed bowl	50.
A	EI BIRDS & CHERRIES compote	60.
PO	EI COIN SPOT compote, opal inside and out	50.

VALMER CROSS SR., PRATTSVILLE, NY 12468
phone: 607-588-6698

M	EI FASHION 7 piece water set	275.
M	EI SHIP & STARS 8" plate	25.
G	EI COIN DOT 6 1/4" bowl	25.
M	EI GRAPE & CABLE punch cup, heat line	10.
M	EI APPLE PANELS creamer	15.
A	EI GRAPE & CABLE tumbler	25.
M	EI STORK vase	35.
M	EI CHECKERBOARD BOUQUET 8" plate	25.
M	EI STAR center 8" plate	25.
M	EI LOUSIA salt & pepper	25.

TED SHEIBLEY, 304A HILLCREST DRIVE, NEW CUMBERLAND, PA 17070
phone: 717-938-6417

PO	EI WREATHED CHERRY small oval bowls, all 3 for	170.
G	EI SINGING BIRDS tumbler	30.
W	EI PEACH berry set	310.
M	EI BLACKBERRY SPRAY hats, 2 different sizes, each	28.
M	EI WATERLILY 9" three footed bowl	45.
M	EI HOBSTAR compote, large	45.
M	EI STIPPLED RAYS 9 1/2" bowl, basketweave exterior, N	42.
M	EI SCROLL EMBOSSED compote	36.
G	EI SUNFLOWER 7" spatula footed bowl, marigold overlay	36.
M	EI RUSTIC 10" vase	22.

SEND SASE FOR LIST OF OLD CARNIVAL

JOHN MIKKONEN, RR1 BDX 474F, SHAKOPEE, MN 55379
phone: 612-445-6098

M	EI VINTAGE fernery, have 2, each	45.
M	EI CHERRY CIRCLES bon-bon, have 2, eah	55.
M	EI HOLLY 9 1/2" low bowl, super color	65.
M	EI VINTAGE BANDED mug set, 6 pieces	180.
M	EI ORANGE TREE mug set, 6 pieces	180.
M	EI PANSY pickle dish, oval	24.
M	EI DOUBLE STEM ROSE dome footed bowl	30.
M	EI GRAPE & CABLE bon-bon, N	35.
M	EI MAPLE LEAF 4 1/2" stemmed ice cream	28.

RALPH SIMENDINGER, 1002 MAYCLIFFE DR., CINCINNATI, OH 45230
phone: 513-231-5381

P	EI IMPERIAL GRAPE water carafe	125.
P	EI PANSY fluted bowl	40.
B	EI LITTLE FLOWERS 4 piece berry set	100.
M	EI WREATH OF ROSES compote	30.
M	EI HOBSTAR BAND tumbler, a little rough on the bottom	35.
G	EI IMPERIAL GRAPE wine set, complete	200.
M	EI SINGING BIRDS stippled mug, small chip bottom mold	75.
P	EI GRAPE & CABLE perfume bottle & stopper, chip on flared top	125.

DENNIS KECK, 126 CHERRY ST., PUNXSUTAWNEY, PA 15767
phone: 814-938-7426

B	EI THREE FRUITS VARIENT 9 1/4" plate	97.
P	EI SCALES 5" bowl, deep finger bowl shape	17.
AQUA	EI OPEN ROSE 8 1/2" bowl, marigold overlay, nice	52.
M	EI LATTICE & POINTS hat shape	42.
P	EI DAISY WEB hat shape, rare	57.
AQUA	EI THIN RIB 8 1/4" vase	27.
AMB	EI FINE RIB 10" vase	27.
P	EI APRIL SHOWERS 10 1/2" vase, Peacock Tail interior	37.
M	EI QUILL tumbler, internal crack, so a \$350 tumbler for....	57.
M	EI MAPLE LEAF butterdish, two tiny no show spots, looks good	47.

HARM WESTERHUIS, RR1 BOX 49, PLATTE, SD 57369
phone: 605-337-3631

P	EI FINECUT & ROSES footed rosebowl	65.
P	EI FINECUT & ROSES footed candy dish	45.
G	EI FINECUT & ROSES footed rosebowl, small chip off of one foot	50.
M	EI GRAPE & CABLE 9" footed plate	65.
M	EI IMPERIAL GRAPE 9" ruffled plate	40.
M	EI BEAUTY BUD (TWIG) vase	25.
P	EI FISHERMANS MUG	75.
B	EI STORK & RUSHES tumbler	40.

CHARLES L. PERRY, 8641 LAKESHORE DRIVE, SOUTHHAVEN, MS 38671
phone at home: 601-342-1694, work: 901-346-5300

EB	EI PEACOCKS 9" piecrust edge bowl, SUPER ELECTRIC COLOR!!	325.
EB	EI FRUITS & FLOWERS bon-bon, SUPER ELECTRIC COLOR	150.
IG	EI PEACOCKS 9" plate	275.
R	EI STIPPLED RAYS 7" ruffled bowls, have 2, each	250.
MMG	EI ACORN 6" bowl, Fenton	395.
A	EI MILLERSBURG HOBNAIL cuspidor	550.
W	EI LEAF CHAIN 7" bowl, frosty white	55.

STERLING BUTZ, 221 NORTH ADAMS STREET, ALLENTOWN, PA 18104

W	EI PEACOCKS ON FENCE ruffled bowl, N	275.
A	EI PANELLED DANDELION 7 piece water set	650.
G	EI PEACOCK @ FOUNTAIN fruit bowl	525.
SM	EI IMPERIAL GRAPE water pitcher	300.
P	EI IMPERIAL GRAPE water carafe	120.
VAS	EI HOLLY hat, vaseline base	25.
M	EI BLACKBERRY BLOCK tumbler	30.

MRS. L.G. MATTHEW SR., 707 EAST HILLTOP DRIVE, ROGERS, ARK 72756
NO PHONE CALLS, please write and send separate check with postage for each

M	EI PEACOCK @ FOUNTAIN TUMBLER	40.
M	EI CRAB CLAW TUMBLER	50.
M	EI TEN MUMS TUMBLER	35.
M	EI TIGER LILY TUMBLER	25.
M	EI FIELD FLOWER TUMBLER	25.
M	EI FASHION TUMBLER	25.
M	EI STORK & RUSHES TUMBLER	16.
M	EI GRAPE & GOTHIC ARCHES TUMBLER	16.
M	EI VINEYARD TUMBLERS, 4 with ruff bases	50.
A	EI MAPLE LEAF TUMBLER	35.

=====
GLASS WANTED
=====

IVAN L. MITCHELL, 215 S. GRAND, HOUSTON, MISSOURI 65483
phone days: 417-967-2140, evenings: 417-967-3437

- G FEATHER & HEART tumblers, up to 5
A INVERTED THISTLE tumbler
P FASHION tumbler
P DAHLIA tumbler
M INVERTED STRAWBERRY tumblers, need 2

AL RETTKE, 14226 EAST 143RD LANE, BURNSVILLE, MN 55337
phone evenings: 612-432-7489

- W, AO PEACOCK @ FOUNTAIN COMPOTES
EB, G PEACOCK & URN MASTER I.C. BOWLS, NORTHWOOD
IB, IG POINSETTIA BOWLS
IB, B WISHBONE BOWLS
AO, IG EMBROIDERED MUMS BOWLS
G SINGING BIRDS OR PEACOCK @ FOUNTAIN BUTTER BOTTOM

ERNEST & LYDIA CAUDLE, RT. #1 BOX 87, STATE ROAD, NC 28676
phone: 919-874-2519

- W WREATHED CHERRY BUTTER BOTTOM or sell top
G GRAPE & CABLE BUTTER BOTTOM
P ACORN BURRS BUTTER TOP
EB PEACOCK @ FOUNTAIN BUTTER BOTTOM
B MAPLE LEAF BUTTER TOP
ANY FARMYARD BOWL
ANY CHRISTMAS COMPOTE

JACK STEWART, 99 ASTER CIRCLE, WEYMOUTH, MASS 02188
phone anytime: 617-337-1304

- ORANGE TREE STANDARD MUGS: W, A, AMB, G, AQUA, RED SLAB
ORANGE TREE SHAVING MUGS: A, G, R, AQUA
SINGING BIRDS MUGS: M, G, AMB, SMOKE, STIPPLED M

EVA BACKER, 12 SHERWOOD ROAD, WEST HARTFORD, CONN 06117
phone: 203-233-3761

- G EI STAR OF DAVID & BOWS BOWL, N
A EI MEMPHIS PUNCH BOWL ONLY
SM EI IMPERIAL STAR OF DAVID BOWL
W ORANGE TREE PUNCH CUPS
ANY UNUSUAL STAR OF DAVID BOWLS

JUDY KASPER, 2567 LOOMIS DRIVE, SAN JOSE, CA 95121
phone after 6PM: 408-226-1485

- IG BEADED CABLE ROSEBOWL
CB EI DRAGON & LOTUS FOOTED BOWL

A.C. DICKEY, 144 CHANDLER STREET, VACAVILLE, CA 95688
phone: 707-448-9386

- P SPRINGTIME TUMBLERS, NEED UP TO 10
W DAHLIA TUMBLERS, NEED UP TO SIX, the ones without painted
flowers and with four flowers on each tumbler

BERNIE MAHN, 1001 ROCK ROAD, DESOTO, MO 63020
phone: 314-586-6226

- A ACORN BURRS BERRY BOWLS, NEED UP TO 4
P GRAPE & CABLE WATER PITCHER, N

CHARLES A. ADAMS, 2211 SUNSET BLVD., LOS ANGELES, CA 90026
phone either: 213-483-7755 or 213-384-5001

- **ANY** ADVERTISING BOWLS OR PLATES
W GOOD LUCK BOWL
A GOLDEN HARVEST DECANTER-STOPPER ONLY
M VINTAGE EPERGNE-BASE ONLY

JAMES & JUDY KEY, RT. #1 BOX 153-B, MARIANNA, ARK 72360
phone: 501-295-6770

ANY ADVERTISING PLATES OR BOWLS
ANY UNUSUALLY SHAPED OR COLORED KITTENS PIECES

LEE BRIIX, RT. #1 BOX 68, HENNESSEY, OK 73742
phone after 5PM: 405-853-2276

P GRAPE & CABLE STOPPER TO WHISKEY DECANTER

I ALSO WANT TO BUY THE FOLLOWING DAMAGED TUMBLERS:

B	GOD & HOME	IB	CONCAVE DIAMONDS
M	SINGING BIRDS	P	RASPBERRY
G	FIELDFLOWER	M	HARVEST FLOWER
W	GRAPE ARBOR	W	APPLE TREE
M	WAFFLE BLOCK		

STANLEY & BEVERLY SCHNEPP, RR #1, NORTH MANCHESTER, IN 46962
phone: 219-774-3634

B BUTTERFLY & FERN TUMBLERS, NEED 2
A GRAPE & CABLE CREAMER, N

JUDITH MILLER, 55 MILL PLAIN RD 25-4 WESTWOOD, DANBURY, CONN 06811
phone evenings: 203-794-0356

P WREATH OF ROSES ROSEBOWL
G FRUITS & FLOWERS BON-BON
M DAISY & PLUME ROSEBOWL
M FINECUT & ROSES ROSEBOWL
B LEAF & BEADS ROSEBOWL
P ANY PATTERN HAT SHAPE
W OPEN EDGE BASKET
M OPEN EDGE BASKET WITH BLACKBERRY INTERIOR OR ADVERTISING
P STAR OF DAVID & BOWS BOWL

RALPH A. PASTORELLI, 1028 JEFFERSON AVE., UTICA, NY 13501
phone after 3:30: 315-732-4902

M WATERLILY & CATTAILS PITCHER (FENTON) OR SELL 6 TUMBLERS
M DANDELION PITCHER OR SELL 6 TUMBLERS

DENNIS KECK, 126 CHERRY STREET, PUNXSUTAWNEY, PA 15767
phone: 814-938-7426

P EI STRAWBERRY EPERGNE LILY
M EI GRAPE & CABLE PERFUME STOPPER
P EI GRAPE & CABLE BUTTER BASE
W EI PEACOCK @ FOUNTAIN PUNCH BASE
M EI ORANGE TREE PUNCH TOP, DEEP COLOR
M EI GRAPE & CABLE COOKIE JAR LID
G EI INVERTED STRAWBERRY POWDER JAR LID
IG EI GRAPE ARBOR TUMBLER
IG EI ORIENTAL POPPY TUMBLER
ANY DANDELION MUGS WITH EI

RAY HITCHCOCK, RR1 BOX 301, WINTERSET, IA 50273
phone: 515-462-2074

PO EI APPLE BLOSSOM TWIGS PLATE

TOM MORDINI, 36 NORTH MERNITZ AVE., FREEPORT, IL 61032
phone: 815-235-4407

SM EI IMPERIAL GRAPE TUMBERS, one or more

JEROME R. KELLY, LOMBARDY, ONT. CANADA, PHONE: 613-283-3374

M EI ORANGE TREE LID FOR BUTTERDISH
M EI GRAPE & CABLE BASE FOR BUTTERDISH

HARM WESTERHUIS, RR1 BOX 49, PLATTE, SD
phone: 605-337-3631

W PALM BEACH SUGAR, CREAMER, SPOONER
W CARNIVAL GLASS FOR RESALE
ANY PUNCH BOWLS or punch set parts
M MANY FRUITS punch bowl base only

JOHN MIKKONEN, RR1 BOX 474F, SHAKOPEE, MN 55379
phone: 612-445-6098

RED HOLLY PLATE and other colors
M OCTAGON CORDIALS
M DIAMOND TUMBLER, need 1

TED SHEIBLEY, 304A HILLCREST DRIVE, NEW CUMBERLAND, PA 17070
phone: 717-938-6417

ANY DRAGON & BERRY BOWLS
ANY SPRINGTIME WATER SET
M, P SINGING BIRDS WATER SET AND/OR TABLE SETS
B ORANGE TREE PUNCH CUPS

ERNEST & MARGIE LANINGHAM, 415 S. WESTGATE #11, WESLACO, TX 78596
phone: 512-968-2201

G EI ORANGE TREE PLATE
AMB EI IMPERIAL GRAPE PLATE
P EI PETAL & FAN 6" PLATE with candy ribbon edge
W EI BLACKBERRY MINI-COMPOTE
Sherman Hand's "Colors in Carnival Glass, Book #3"
Rose Presznick's "Carnival & Iridescent Glass, Book #2"

D.W. EVANS, 617 EAST 18TH STREET, S. SQUIX CITY, NE 68776
phone: 401-494-5269

M ACORN BURRS WATER PITCHER
G MILLERSBURG DIAMONDS WATER PITCHER

MRS. L.G. MATTHEW SR., 707 EAST HILLTOP DRIVE, ROGERS, ARK 72756

P PEACOCK @ FOUNTAIN PUNCH BOWL & CUPS
P SHELL BUTTER BASE
P DAHLIA BUTTER TOP

LLOYD WARD, P.O. BOX 787, EULESS, TX 76039
phone anytime: 817-540-0081

IB WISHBONE EPERGNE
IG, W WISHBONE EPERGNE LILY OR COMPLETE EPERGNE
IG WIDE PANEL EPERGNE CENTER LILY
IB WIDE PANEL EPERGNE
W MANY FRUITS PUNCH BOWL BASE ONLY AND/OR CUPS
B ACORN BURRS PUNCH BOWL & BASE AND/OR CUPS
B FENTONIA BUTTERDISH
ANY ODD PARTS-any pieces of any multi-piece sets in any colors

HAVE A FRIEND WHO COLLECTS CARNIVAL BUT IS NOT A MEMBER? OR MAYBE SOMEONE WHO YOU HAPPEN TO MEET AT A SALE, SHOW OR AUCTION. BE AN ACTIVE MEMBER AND HELP YOUR CLUB GROW, AND GIVE THEM THIS APPLICATION. TEAR OUT OR XEROX THIS PAGE AND PUT IT IN YOUR BILLFOLD OR PURSE SO YOU WILL HAVE IT WITH YOU WHEN THE OCCASION ARISES.

Application For Membership

HEART OF AMERICA CARNIVAL GLASS ASSOCIATION

DATE _____

NAME: _____

SPOUSE: _____

ADDRESS: _____

CITY: _____ STATE: _____ ZIP CODE: _____

TELEPHONE (optional): _____

Do you want your name in the directory? YES _____ NO _____

DUES: \$20.00 per year--JUNE to JUNE--Couple or Family membership

We offer the best in monthly news and educational articles.

SEND DUES TO: H.O.A.C.G.A.

Diane Trefff, Secretary
13646 Leavenworth Road
Kansas City, KS. 66109

Recommended by: _____