

H.O.A.C.G.A.
BULLETIN SECRETARY
AL RETTKE
14226 East 143rd Lane
Burnsville, MN 55337

MAY 15, 1984

CONVENTION NEWS PAGES 2-8

FIRST CLASS MAIL

CHECK YOUR ADDRESS LABEL

IF IT SAYS 6-84, YOUR DUES ARE DUE

Your membership will expire
on June 15th and you will be
deleted from the mailing list

** DON'T MISS AN ISSUE, RENEW NOW **



Heart of America Carnival Glass Association Inc.

MEMBERSHIP JUNE TO JUNE
\$20.00 PER COUPLE OR SINGLE

PUBLISHED THE 15TH
OF EACH MONTH

PRESIDENT

GEORGE O. MCGREW, JR.
6800 WOODWARD
OVERLAND PARK, KS 66204
913-262-8822

VICE-PRESIDENT

MICHAEL BASEY
4315 ADAMS
KANSAS CITY, KS 66103
913-432-2460

TREASURER

ELIZABETH BOLLES
5204 CATALINA
SHAWNEE MISSION, KS, 66205
913-432-5438

SECRETARY

DIANE TREFF
13646 LEAVENWORTH ROAD
KANSAS CITY, KS 66109
913-721-2917

BULLETIN SECRETARY

AL RETTKE
14226 EAST 143RD LANE
BURNSVILLE, MN 55337
612-432-7489

ALL MONETARY FIGURES QUOTED ARE IN U.S. DOLLARS
PLEASE MAKE CHECKS FOR DUES PAYABLE TO H.O.A.C.G.A.
AND SEND THEM TO THE SECRETARY AS LISTED ABOVE

April 27th, 1984, Annual Meeting of the HEART OF AMERICA CARNIVAL GLASS ASSOCIATION

At 2:00PM, President George McGrew called the Annual meeting to order. President McGrew began the meeting by welcoming all of our out of town guests to the meeting.

President McGrew introduced the 1983-84 Board members. He then introduced representatives of other Carnival Glass Clubs and Associations. Those clubs represented were Encore, Pacific N.W., Air Capitol, International, American, Lincoln Land and Northern California. Each representative gave a brief announcement as to where their club would be holding their conventions and the dates of each convention.

Diana Treff, Secretary, then read the minutes of the April 1983 Annual meeting. With no additions or corrections, they were accepted as read. Diana then read the minutes of the last monthly meeting. The March 1984 minutes were accepted as read.

Treasurer Elizabeth Bolles then distributed copies of the Treasurers report which covers the period of June 1, 1983 through March 31, 1984. The report was as follows: Total receipts for this period were \$28,076.98, total disbursements for the same period were \$22,088.36. This leaves an increase to the fund balance of \$5,988.62. The total fund balance is now \$17,392.70. The Treasurer's report was accepted as given.

President McGrew announced that the Board had voted to accept Mr. Frank Fentons offer to refund to the club the cost of all remaining ice blue Corn vases left in our inventory. Mr. Fenton commented to members present that the corn vases will be further modified and then sold in the Fenton Gift Shop.

President McGrew then introduced Convention Co-Chairmen Cooley Miller and Davis Shikles. They reported that all comments on the hotel had been favorable. The co-operation of the hotel staff had been excellent.

President McGrew then introduced Room Display Chairman Florence Cunningham. Florence announced her room number and suggested that all ballots be in by 4:00PM so that the counting of ballots could be completed by the Banquet.

The next order of business was the election of officers. President McGrew recognized Nominating Chairman Herbert Treff. Mr. Treff announced that the Committee had the following names for the slate:

President-none, Vice-President-none, Secretary-none
Treasurer-Karen Engel, Bulletin Secretary-Al Rettke

HEART OF AMERICA CARNIVAL GLASS ASSOCIATION'S
12th ANNUAL CONVENTION

by AL RETTKE

The 1984 convention was held at the Holiday Inn, KCI Airport in Kansas City, MO., during April 26-29th. Lack of a Holidome was more than made up for by the very pleasant and attentive hotel staff. The hotel and convention Co-Chairmen Miller & Shikles are both to be congratulated for a job well done.

The Encore convention started Monday and there were lots of people at both motels. Our Conventions official start was on Thursday and Helen James gave a great talk at the noon luncheon. It was nice to hear some of the adventures that she and Kenny had been on and the rewards they shared. There were many arrivals Thursday afternoon and although there seemed to be slightly fewer choice and rare pieces for buyers to choose from, a lot of good glass changed hands. Thursday evening, there was the always interesting and lively panel discussion. Panel members were Don Moore, Frank Fenton Jr., John Britt (assisted by Lucile) and Tom Burns. Quite a number of very interesting pieces turned up for I.D.'s.

Friday brought the business meeting and several important issues were discussed, including the election of new officers (please see the Secretary's minutes on pages 2 & 3). The rooms with displays were held open on a strict schedule so everyone had the chance to see them all.

Cecil and Floyd Whitley were the speakers at the banquet. They brought a fantastic assortment of rarities and told a number of tales on how they had acquired them. Here you see them with George Loescher's head peeking in from the left. I'm not sure if Floyd is telling George he already has enough insurance or asking if George helps to pack as well as un-pack! At any rate, the Whitley's talk was one of the highlights of the convention.

(Just kidding George)



Nominations were opened from the floor for the office of President. Those nominated were Mr. Cooley Miller and Mr. Robert Grissom. Both nominees accepted that nomination. It was asked three times if there were any other nominations. There were none and nominations for this office were closed.

Nominations were opened from the floor for the office of Vice-President. Those nominated were Charles Mochel, Diana Treff and Mike Basey. Charles Mochel and Diana Treff accepted the nomination. Mike Basey declined. It was asked three times if there were any other nominations. There were none and nominations for this office were closed.

Nominations were then opened from the floor for the office of Secretary. Lucile Britt, Helen James and Dorothy Taylor were nominated. Lucile Britt accepted the nomination with the understanding of the members present that she did travel and would be unable to attend all monthly meetings and requested that another member be responsible for taking the minutes and sending them to the Bulletin Secretary. Dorothy Taylor and Helen James declined the nomination. It was asked three times if there were any other nominations. There were none and nominations for this office were closed.

Nominations were opened for the office of Treasurer. The committee submitted the name of Karen Engel. It was asked three times if there were any other nominations. There were none and nominations for this office were closed.

Nominations were opened for the office of Bulletin Secretary. The committee submitted the name of Al Rettke. It was asked three times if there were any other nominations. There were none and nominations for this office were closed.

Ballots were passed out to members. The election results were as follows:

PRESIDENT	COOLEY MILLER	KANSAS CITY, MISSOURI
VICE-PRESIDENT	DIANA TREFF	KANSAS CITY, KANSAS
SECRETARY	LUCILE BRITT	MANHATTAN, KANSAS
TREASURER	KAREN ENGEL	BROWNSVILLE, OREGON
BULLETIN SECRETARY	AL RETTKE	BURNSVILLE, MINNESOTA

The meeting was then adjourned. The next meeting to be at the Holiday Inn KCI Airport, Kansas City, MO on May 27, 1984. Meeting to begin at 2:00PM.

DIANA TREFF, Secretary



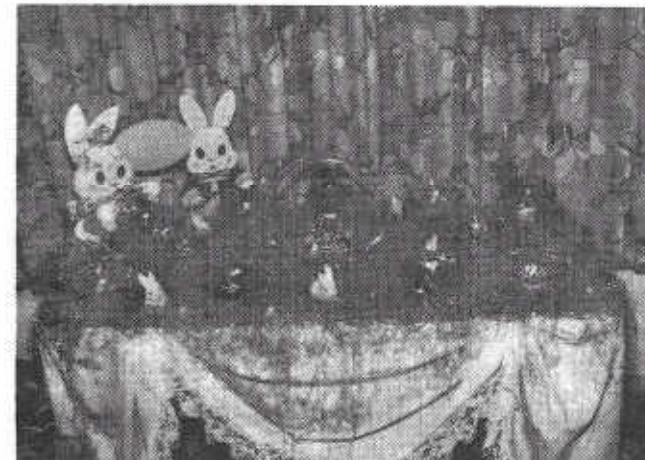
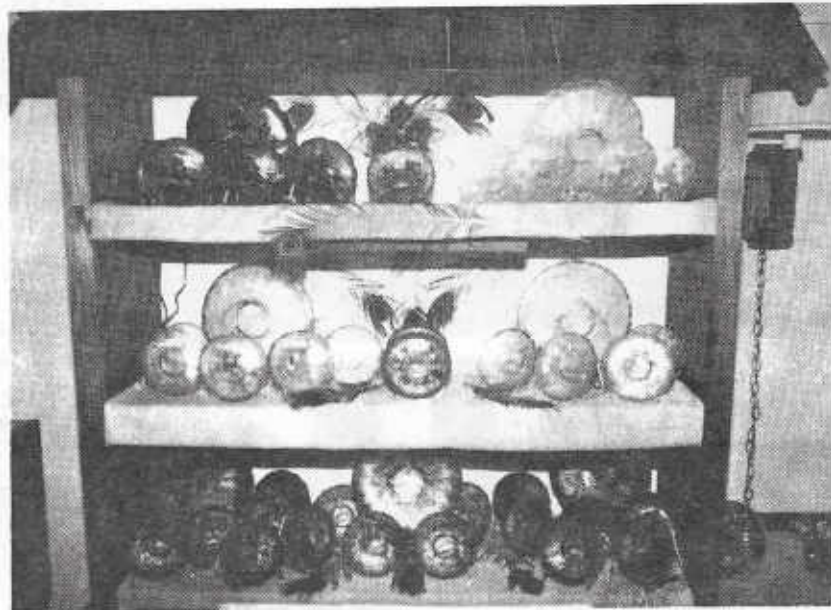
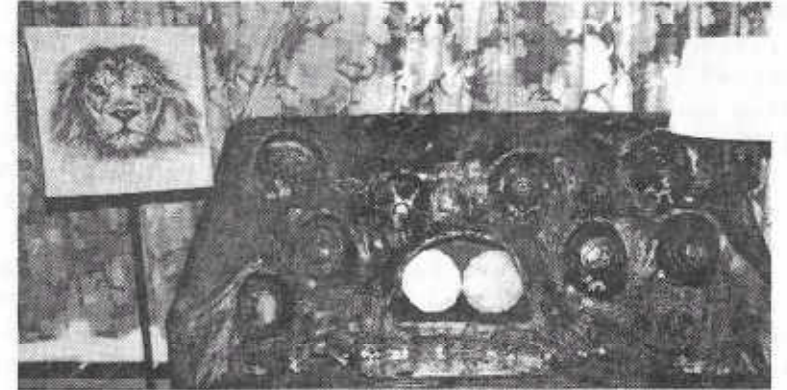
In this photo, we have from left to right: Bev Osbon, Herb Treff, Ken Osbon, Sadie Treff and our new Treasurer, Karen Engel. The whimsy basket Herb & Sadie are holding was a gift from the other 3 folks in honor of the Treff's 58th Anniversary on Saturday. The whimsy souvenirs sold very well at the banquet. The highest selling price was \$300 for a ruffled chop plate with enameled Bluebirds.



Above is the photo of DON & CONNIE MOORE'S display of eight different colored Acorn Burrs punch sets. They always have a fantastic display and this one will be hard even for them to beat. It was voted second most popular.

Also at the Friday banquet were the presentations of the ROOM DISPLAY AWARDS. The displays this year seemed better than ever, and everyone who had a display was surely a winner. The peoples choice for First Place display was Harold & Arlene Cox's "Mr. Peacock's Ice Cream Parlor". The seven different colors of Northwood's Peacock & Urn ice cream sets setting inside of a roofed shed was a real crowd pleaser. Harold added the eighth color of master ice cream bowls to his collection on Saturday when he bought the AD one in the auction. I'm sure it will roost with this flock for a long time!

GARTH IRBY was voted Third place with this impressive grouping of Lions, each in a den of its own except for the two rare custard plates in the center. Nice going!!



BOB & DOROTHY GALLO took fourth place with this really cute display of baskets in a Easter type theme.

1st PLACE DISPLAY
HAROLD & ARLENE COX



This is the display of ROBERT and NANCY STREMMING. Their theme was "White Christmas....Carnival" and they were voted fifth place.

There were so many really nice displays, it was difficult to vote for only five. Here are five more that really deserve recognition:

GEORGE & MAVIS LOESCHER and "that Aqua Opal Magic" (14 pieces of AO including a pair of middle size Tree Trunk vases, Master and Individual Peacock & Urn ice creams, a pair of AO Corn vases, a pair of LGO Rose show plates and a couple pair of other AO pieces....NICE!!).

FLOYDE & CECIL WHITLEY brought (in addition to the rarities for their talk) "A Texas Flower Garden" with four Rose Column vases (including the only known blue) and five Poppy Show plates (including one of two known in AO). We are talking some heady stuff here for displays that didn't place!

DON KIME & ROLAND KUHN had "The Wishbone Collection" on display. They had five epergnes including Ice Blue and White, three colors of pitchers, footed bowls including one of 3 or 4 known in Aqua Opal, the very rare Ice Green, Ice Blue, White and the only known pastel collar base bowl, a piecrust edge white one. A really super display!!

BOB & KITTY VINING brought a little to please everyone, their display had Red, Ice Blue, Ice Green, Aqua Opal and in a large variety of patterns.

RAY & RAY ANN HITCHCOCK had a great display of plates and Ray was observed fighting off buyers for his blue Greek Key, among others.



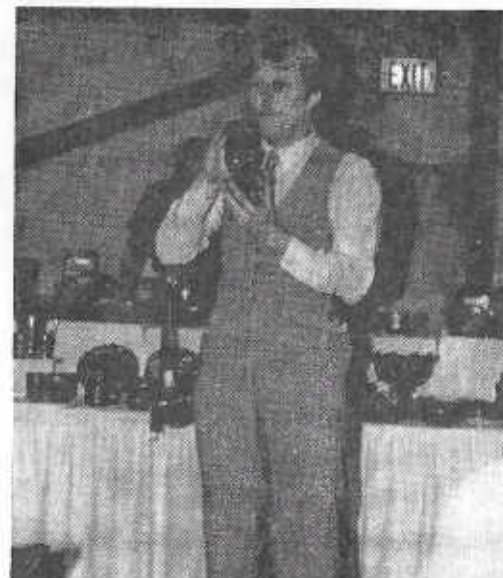
Here we observe a few couples having a good time dancing after the Saturday nite Chuckwagon. Can anyone identify the guy on the left dancing with the pretty lady? Someone told me he was a gate crasher but then another person said "he belongs here, just don't take his check". Anyway, the food was great and a large part of the credit goes to Herb & Sadie Treff. (see page 38)

HOACGA CONVENTION AUCTION OF THE HARSCH COLLECTION

QUESTION: Who is this young man and what is he doing?

ANSWER: His name is TOM BURNS and he is expounding on the merits of the purple Corn Husk vase he is holding.

It must have worked, because this item brought the top price of the auction, \$5000. A few of the other top prices were: amethyst Goddess of Harvest bowl \$3750, aqua opalescent Peacock & Urn master ice cream bowl \$3000, white Peacock & Fountain punch set \$2250.



Tom Burns, assisted by Bill Richards, auctioned off the collection of the late Leonard Harsch on Saturday, April 28th. Mr. Harsch collected quality glass with an eye for good iridescence. A number of pieces set new price records, but this seems to be the trend with every major auction. The interest in old carnival continues on the upswing with quality of iridescence determining price. Below are a few prices:

Green Acorn Burrs 6 piece water set 900, green 4 piece table set 650
 Rose Show plates: Ice Blue 575, Blue 350, White 225, Marigold 250
 Rose Show Variet bowl in Blue 325, Open Rose 7 pc Amethyst berry set 275
 Imperial Grape punch set in Helios Green 325, Purple 7pc wine set 325
 Imperial Grape 10" bowl in violet 160, Stork & Rushes handled basket M 140
 Imperial's Three Row vase in Purple 700, Dugan's Beaded Basket White 225
 Border Plants Purple ice cream bowl 400, Nautilus novelty Peach Opal 375
 Raspberry 7 piece water sets: Purple 400, Green 525, Marigold 350
 Leaf & Beads rosebowl Aqua Opal 300, Fine Cut & Roses rosebowl Green 160
 Nu-Art Homestead White chop plate 600, Heavy Grape Marigold chop plate 170
 Grape & Gothic Arches Green 4pc table set 900, Marigold 7 pc water set 300
 Butterfly & Berry Blue table set 525, Blackberry Open Edge Mari plate 290
 Cherry Chain Marigold chop plate 500, Diamond Lace Purple water set 450
 Fenton Peacock & Urn plates: Blue 250 and 400, White 200
 Peacocks Aqua Opal bowl 595, IG plate 285, Amy plate 300, Mari bowl 160
 Three Fruits Aqua Opal footed bowls 375 and 400, plate (light opal) 620
 Three Fruits stippled Teal bowl 525, Pine Cone small plate in Green 175
 N's Peacock & Urn 7pc ice cream set Purple 650, Master bowl only Amy 600
 N Town Pump Marigold 1400, Purple 650, 10" Heavy Grape Peach Opal bowl 650
 Butterfly & Tulip Square Purple bowl 1300, Little Fishes Blue Master 320
 Fenton Floral & Grape 7 pc water set Green 825, Pansy bowl Purple 45
 Oriental Poppy 7pc water sets, Purple 1400, Marigold ribbed varient 425
 Grape Arbor water pitcher Ice Blue 950, 10" Petal & Fan bowl Purple 330
 Grape & Cable fernery dark Marigold 800, Blue hatpin holder 600

THANKS TO ALL OF YOU WHO HAVE RECRUITED NEW MEMBERS INTO HOACGA DURING OUR 1983-84 YEAR. BELOW ARE THE NAMES OF MEMBERS WHO HAVE RECRUITED TWO OR MORE NEW MEMBERS DURING THE YEAR:

JOHN & LUCILE BRITT	9 members
AL & WENDY RETTKE	6 members
DIANA TREFF	5 members
DONALD MOORE	3 members
EMMA TILTON	3 members
TOM McCROHAN	3 members
FRANK BRISBANE	3 members
JANET KNETCHEL	3 members
HELEN JAMES	2 members
MIKE BASEY	2 members

During the month of October (National Carnival Glass Month) the Club recruited 21 new members!! Eleven of these new members were received through the Antique Trader ad. OUR GOAL FOR THE 1984-85 YEAR IS TO INCREASE OUR MEMBERSHIP BY 10%. THIS CAN BE DONE EASILY WITH THE HELP OF EACH ONE OF OUR MEMBERS. WE ARE REALLY STARTING THE NEW YEAR OUT GREAT THANKS TO THE JOINT EFFORTS OF LUCILE BRITT AND EMMA TILTON. THEY ALREADY HAVE 12 NEW MEMBERS!!!

***** NEWS FROM AFAR *****

I enjoyed the last Bulletin. I find the cheapest way to upgrade my collection is to read Don Moores articles!!

I have two of the purple Open Rose plates and have always considered them beautiful but common. I had two green ones, but let a friend have one of those (\$50) when I was home. I don't know how Imperial could make such beautiful purple plates and make such a mess of the green ones.

On to the Carnival Holly, I have the amethyst and green plates and they are really lovely, but again, I didn't think they would be scarce. I bought these two when I was very new to collecting and they were \$50 each. At this stage, I was only into \$25 pieces, so I rang a dealer/collector friend and asked her advice as Carnival Holly is one pattern that is easy to find in Australia. She assured me that being a plate made it better than a bowl. I was still unsure so said to her "I'll go back and offer them \$48 each", she replied "Oh yes, and what are you going to buy with the \$2 if you miss out?" After that, if I like a piece and the price seems a little too dear, I'd just say I was buying it at next years price, but at least I HAD IT NEXT YEAR WHEN THEY BECAME HARDER TO FIND. Keep writing Don, I might have a first class collection when I get home and unpack it again.

LEILA GALVIN
TRIPOLI, LYBIA (Temporarily)

PAGE 9



BEADED SHELL--Another Dugan/Diamond Tumbler

"Beaded Shell" tumblers are shown above in purple, marigold and cobalt blue. While certainly not common, they are in most cases, not too difficult to find. It has been my experience that the purple and amethyst colored tumblers are seen the most often. It must be noted, however, that a water pitcher in the dark color is extremely hard to obtain. In fact, you are lucky indeed, if you own a "Beaded Shell" water set in any color.



It is interesting to note that "Beaded Shell" tumblers were produced in a very light amethyst color on up through the darker shades to a deep, almost black purple in which you need a very strong light to detect any trace of color. I have seen a few lavender colored tumblers, but they are certainly rare in that color. The cobalt blue "Beaded Shell" tumblers are much harder to locate than those in the purple and amethyst shades. I do not know of any blue water pitchers in this pattern, but there certainly must be a few out there somewhere.

As yet, I have never seen a green carnival glass tumbler or mug in this

pattern. If one were discovered, it would certainly be a rarity. In my opinion, it is very doubtful that a green "Beaded Shell" tumbler will ever be found. My reasoning is this; if you stop to think about it, no green tumbler is known to exist in ANY Dugan/Diamond water set patterns. Dugan/Diamond patterns that were made in carnival glass tumblers which come to mind in addition to "Beaded Shell" are: Lattice & Daisy, Wreathed Cherry, Floral & Grape, Quill, Dahlia, Heavy Iris, Circle Scroll, Stork & Rushes, Grapevine Lattice, Harvest Flower, Vintage Banded, Maple Leaf and Jewelled Heart. I have never seen or heard of a green carnival glass tumbler in any of these patterns. If one does exist, I certainly would like to hear about it. Granted, Floral & Grape Variet tumblers are known to exist in green, but this is a Fenton pattern and was not made by Dugan/Diamond. They produced the regular Floral & Grape version which is decidedly different from the Fenton Variet. For some reason, it seems that Dugan/Diamond did not like carnival water sets in green. I have always hoped that a white "Beaded Shell" tumbler might show up some time. The reason for this expectation or wishful thinking, of course, is that on a few rare occasions, a white "Beaded Shell" mug has turned up.

Since we are discussing the "Beaded Shell" pattern, I thought it might be helpful to include a picture of the scarce marigold "Beaded Shell" mug alongside the rare white example. These white "Beaded Shell" mugs are highly sought after by collectors today and it is seldom that one shows up for sale. Again, as with the tumblers, they are found in a great many shades of purple.



"Beaded Shell" tumblers were also made in opalescent glass. These are not iridised, so they are not carnival. The opalescent glass tumblers are very beautiful and are extremely hard to find. We have one of them in blue opalescent, but as yet have not been able to locate one in green or white opalescent. A number of other carnival glass pattern tumblers were also made in opalescent glass including Circle Scroll, Jewelled Heart, Lattice & Daisy, Palm Beach, Interior Poinsettia, Waffle Block and Waterlily & Cattails. All of these are very pretty tumblers and are very collectable today. Beaded Shell, Circle Scroll, Palm Beach and Waffle Block tumblers are very hard to find in opalescent glass. Palm Beach was also made in vaseline opalescent and the tumblers in this color are fantastic.

BEADED SHELL TUMBLER
IN BLUE OPALESCENT
(non-iridised pattern glass)



The "Beaded Shell" pattern was for many years thought to have been made by Northwood. It is now known to be a Dugan/Diamond product. Much of the important Dugan/Diamond research work was through the efforts of William Heacock, researcher and author of a number of educational books on old pattern glass. Some of this research work was from diggings at the old Dugan/Diamond factory site at Indiana, PA. The use of the old "Butler Brothers" catalogs, which indeed contain a world of information on old glass, was another important factor in his research bit. A great many of our fine and beautiful carnival glass tumblers were made by Dugan/Diamond. We have covered some of these in the past and will include others in future articles.

This marks our 76th edition in this educational tumbler series. Next month, we will go to the Ohio river city of Bellaire, Ohio and feature one of Imperial's great carnival glass entires into the water set field. It is widely known as "Imperial Grape". More on this prolifically produced pattern next month.

JOHN & LUCILE BRITT

*** CARNIVAL GLASS AS AN EXPORT ***
by Ray Notley

The flowering of the American genius for mass production is, for fans of Carnival Glass, the period from 1908 to 1917. The first year is when the Fenton factory started bulk production of repeat moulded iridescent art glass. They quite correctly called themselves the Fenton Art Glass Company. The latter year I quote is the year of entry of the United States into the First World War. One is ever hopeful that Carnival is being understood more and more to be both an art and a historical glassware.

I have never had any doubts as to it being an art glass but researching its history has been a rather lonely and rather tiring business. Luckily I enjoy sitting in old dusty libraries. Most of the time one turns up nothing, or what appears to be nothing. Research, however, must be complete, it must be accurate and whilst I used to share preliminary discoveries with others, I no longer do so. It takes years to really get into a subject and this is what I am doing. So when I tell you that at the moment I am deep into shipping, trade and customs lists I hope you realise that I have not taken leave of my senses. Odd items such as a certain H. Northwood leaving Liverpool on a Cunard boat bound for Boston are interesting but this was found by accident looking for something else. Years and years after this, one finds manifests of Northwood glass coming into Liverpool from Philadelphia. These two snippets took twelve visits, twelve days sitting with a notebook, pen and duster. The latter sees more use than the pen.

Carnival Glass was just one part of the huge success that American made glass enjoyed outside the USA. It was a huge export success. The glass industry of the USA was protected by a very hefty tariff (around 60%) that made export to the USA very difficult. It was easier for the Ohio valley factories to sell their goods abroad as Europe was generally wide open. No duties at all were levied onto glass coming into the UK. Some other European countries, with glass industries, did impose duties. France, Belgium, Germany and the Scandinavian Tax Union all penalised foreign glass. This naturally effected the distribution of American glass throughout Europe. The plum market was the UK and through London came access to the then British Empire. This was then the largest and richest consumer market in the world and was indeed a great deal of the world. The British Navy and Merchant Fleet were up to 1914 the largest ever known and Britannia ruled the waves. The vast tonnages of American glass that left the USA via Philadelphia all left in British Merchant vessels. Having reached England it was reshipped via Liverpool to the Empire. The boring old shipping lists, etc., that I mentioned earlier are very revealing once one manages to read them (they are all handwritten).

Pressed, coloured, shaded and fancy finished goods were all listed separately. Fenton appears with one mention in late 1908 and Northwood the year after. This is in the category of goods deemed "fancy finished, giftware novelty finished not tableware". The curious thing is that the keeping of such detailed statistics was rather pointless as no duties were levied. Annual summaries of statistics lay unread and ledgers of monthly returns would appear not to have been opened since they were closed!!!

However to reveal more at this stage would be pointless. What one is able to conform, and this is a pleasant task, is the suspicion that much US Carnival Glass was never sold on the domestic market. Much more than has been previously realised was exported and has found its way back to the USA over the last 25 years. Whilst this is the gain of the US collector it is amazing that UK collectors (and Australians etc.) can still build up good collections. Colours and shapes are now turning up all over the place that were never listed or even known about just a few years ago. I am in no position to argue with any US Carnival buff who tells us that Carnival was a dead duck in the US by 1924. What I can tell you is that vast amounts of Carnival were pouring into the UK right up to 1931. From the USA. From Sweden. From Czechoslovakia. The last firm to export US made Carnival was Imperial. From 1927 through to 1931 they only offered "marigold" but in staggering amounts. Gone were the days of barrel assortments that we are so familiar with from the Butler Bros. ads. Whole barrels full of one pattern, in one shape, arrived. Diamond too did this. COSMOS VARIANT, PONY, WINDFLOWER all arrived by the barrel. As did BROOKLYN BRIDGE! All these items, in marigold, were used in fairgrounds in the UK and the distributor has been located. The first distributor of Imperial disappeared during the anti German feelings of the First World War but the firm that handled their goods after that did so right up to 1931. They also handled Swedish and Czech glass and in the period from 1926 to 1931 were the sole importers to the UK, of what we now call "late" carnival, from politeness.

The second largest importer of US glass was Cuba. What there is there in the way of Carnival Glass we will have to wait and see as for the past 25 years it has been a closed country to all intents and purposes. The Spanish language catalogues of many US glass firms were intended for the wholesalers and entrepreneurs of Havana as much as the rest of the Hispanic world. Havana was a huge transit port and a very convenient free port at that. It was like Liverpool with its onward shipping. Through Havana went goods to South America from the USA, from Europe and the Caribbean. US influence over Cuba was very strong at this time as you know. An interesting point for further research.

As many of you have thought already, much of the Carnival in US collections is well travelled. All PETER RABBIT items seem to come from the UK. (One UK collector has three green bowls in this pattern). Odd

colours like Persian Blue and opalescents all surface in the UK as do very unusual shapings of ordinary patterns. The patient collector in the UK can amass a dazzling collection of curiosities. I hesitate to use the word rare. Many of the fascinating items that you are all finding in the US can be traced back to shippers. Recently I know of the following that have been snapped up to be shipped to the USA. Persian Blue LOTUS & BERRY; Red PANTHER; Milk glass GRAPE & CABLE (Fenton) with marigold overlay; similar in PEACOCK & URN; Aqua opal THREE FRUITS plate (yes!!). These all are new on the market. They came from house clearances, etc. There is a lot more on the way but the race is now on between the shippers and ever growing band of enthusiasts in the UK.

I seriously think that in the next few years the most astonishing items are going to surface both here, in the UK and elsewhere outside the USA. We are all going to have to start saving our pennies. There are some goodies on the way!!

(Copyright 1984 by Ray Notley).

=====

DETTY AUCTION

=====

We received a very large brochure of Mrs. Ruth Dettys' estate to be sold April 24TH through 28TH. Now thats a sizable sale. Carnival and the better glass to go on the first two days. We remembered meeting Mrs. Detty at a convention but had no idea they had a vast collection of everything. We did know son Harold and wife Patty had made beautiful displays of their carnival through the years.

After a dismal Easter day, it wasn't much better to start for Circleville, OH. on Monday. A distance of about 165 miles however we seldom ever go direct so went by a shop we had heard of off our route which was useless as usual. We arrived at the fairgrounds coliseum with no sign of an auction anywhere. Finally found a door to open and workers on the inside busy getting a million things on tables all over the building.

It really was astounding to see it all and to hear it had actually been in a small house. No one was allowed to see anything until the next morning which was a disappointment to so many who were gathering already. Joe Corrothers was there with two of the prettiest and most unusual shapes of the Millersburg fish.

We all stayed at an L&K four miles out and I noticed many states represented. It was good to see the Osbons from Oregon on their way to

HOACGA convention, also Rick Kojis had come by to check carnival before going on to Kansas. The rains absolutely poured down all night and on Tuesday it was so cold we all nearly froze while sitting so long in the large building. We all gathered before 7 AM to see what was being offered. Surely a sight to see so much. The auction was conducted by Mike Clum. We had never seen him before but he is a well known auctioneer for that section of Ohio. He did a remarkable job with the help of three or four persons. Part of the time there were two auctions going on at the same time, each at opposite ends of the building, so of course we stayed on the glassware end.

There was a large crowd, pictures were taken of the ones who got bidding numbers which at last count Tuesday numbered 379. On Wednesday one had to get new numbers in a different color but it was a much smaller crowd and we wondered how many could attend a five day auction. What we saw was a fairly good sale, the most expensive carnival piece was a lovely large red Vintage bowl that sold for 900. Next was a large size Zipper Loop Lamp and we finally gave up at 660. A nice Millersburg Cherries milk pitcher sold for 650 to Mildred Markley who also got the lavender Fish bowl at 300. two or three water sets went to Dr. Allen Jones of Bristol, VA.

We went back on Wednesday for a brief stay and left at 10:30 for home. The sun was out and a beautiful day, about 85. We did enjoy the auction and seeing so many friends. All we got was a pretty Beaded Cable rose bowl and the Grape & Cable centerpiece bowl. On the way home we were lucky to find a beautiful bright red large size "Little Flowers" bowl, a white Butterfly & Berry water pitcher, and a little Peacock & Urn plate.

The days are like spring for a change and are busy ones. We hope to go to New Philadelphia May 4TH & 5TH for Toms' sale.

We received our souvenir bowl and think it is a fabulous one. Know all should be happy about them and there should be none left over. Sorry to miss the convention and are sure everyone there had a wonderful time.

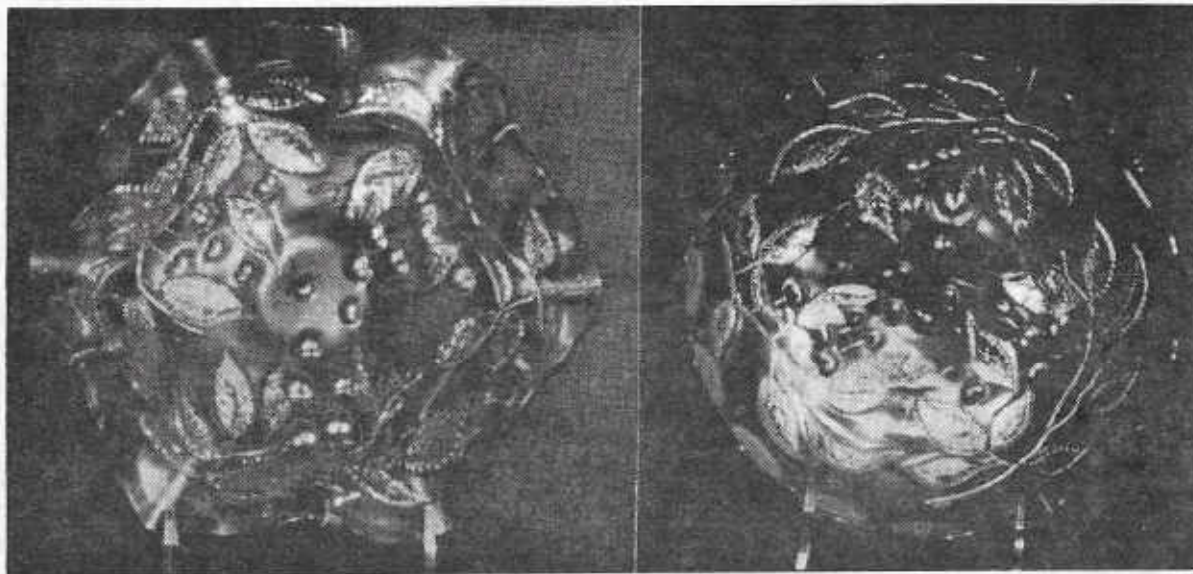
GRACE & BYRON RINEHART
CHARLESTON, WEST VIRGINIA

=====

RARITIES and SELDOM SEEN

=====

by Ivan & Betty Mitchell



HANGING CHERRIES BOWLS--MILLERSBURG

Here we have two RARE 8 1/2"--8 3/4" bowls in the well known Millersburg "Hanging Cherries" pattern. The bowl on the left is 8 3/4" in diameter, purple in color and six ruffled. The bowl on the right is 8 1/2" in diameter, green and ice cream shaped.

Both bowls have the radium finish, wide panel exteriors and the many rayed star on the bottom. They are from the same mold, the leaves, cherries, etc. are identical. The bowls we have seen in this size are a very few and they are always much sought after by collectors.

We also own a 10" radium finish, ice cream style bowl in this pattern. This, of course, is a standard size and we have seen a number of these through the years.

The Canadian Carnival Glass Association has had one major change with it's convention: We have received a Collection to auction off and as it is a very good one, we will be holding the Auction on Sunday, October 7th instead of at the banquet. We will be auctioning off our souvenir whimsies at the banquet.

The Auction will have quite a number of good pieces including a BLACK Fenton Open Edge basket, WHITE Beaded Cable rosebowl, WHITE Persian Medallion compote, and a PURPLE Beaded Shell pitcher. Lists later.

The tour of area collections has been changed in order to have the auction on Sunday. If anyone is interested in seeing some of the collections, we will try to make other arrangements.

I attended the Lakeland Convention in February and really enjoyed myself. Several people mentioned that there were no bargains or interesting pieces to be found. I found several. At the Convention, I purchased a blue Lions bowl, alavender Trout & Fly, a piecrust edge smokey Peacocks bowl, and a white Peacocks plate.

Touring Florida after, I found three pieces of red, a purple Ribbon Tie ruffled plate, a blue Drapery rosebowl, a ice green opalescent footed Peacock & Grape bowl in the ice cream shape (this cost me \$58.), an aqua opal rosebowl, a Kittens piece, a ice blue open edge basket, and a very nice smokey Zippered Loop lamp. This does not include the peach opal plates and bowls, a Peacocks plate and bowl or the other pieces that were such a good buy that I could not leave them in the shops to just sit there and gather dust.....

One interesting piece I found here in Ontario a few weeks ago is a purple compote signed Northwood (N) that has the Wildflower pattern on the outside but DOES NOT have the Blossomtime pattern on the interior. The only information I can find lists these patterns together. I would be pleased to learn more about this compote and whether or not it is common. I also found a beautiful white Poppy Show bowl with gold iridescence at the same place.

Finding all these pieces has given me a few problems. My cupboards do not have any more room and my bank account is empty. I can always make more room but our government frowns on us making our own money! Sure hope I find a solution soon with all the conventions coming up.

Looking forward to seeing lots of HOACGA members at our convention.

JANET KNECHTEL

CCGA Convention Chairman

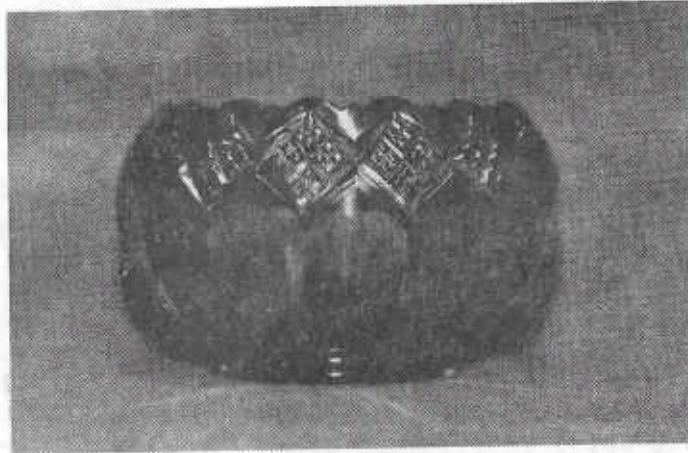
R.R. #1, Breslau, Ontario, NOB 1M0

=====

PICTORIAL PATTERN PARADE

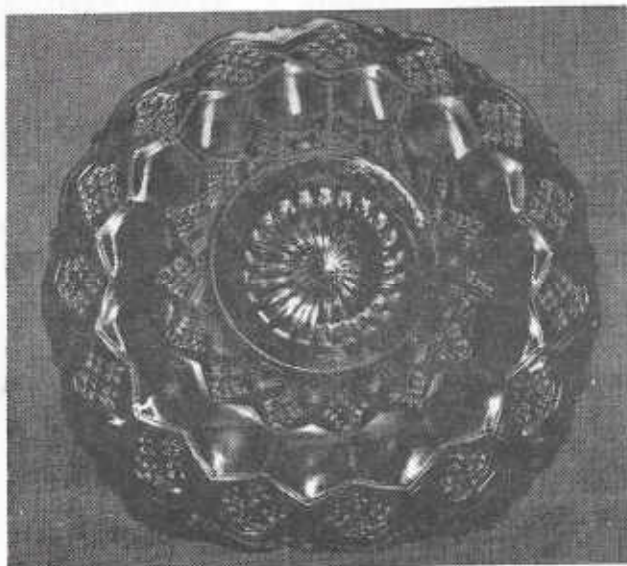
=====

by John & Lucile Britt



RARE
THREE-IN-ONE
ROSEBOWL

The above picture shows the "Three-in-one" pattern in a rosebowl. This is the same piece of glass that was used to make the regular bowls, only in this case, the sides have been pulled up and turned in at the top to form a rosebowl. It is a deep, rich marigold color. The "Three-in-one" pattern is not listed as being made in a rosebowl by either Hartung or Edwards, so I assume they have not seen one. This piece is from the C.B. Carroll collection and sold for \$175 at that auction in September 1983. I consider this rosebowl as being both a rare and desirable piece of carnival glass and it would make a fine addition to any collection.



"Three-in-one" is an old Imperial pattern. It was made originally in clear glass and later in carnival but never in any quantity. The pieces that are usually seen are the small and large sized bowls. I have also seen the "Three-in-one" pattern used on carnival glass lampshades. Occasionally a small 6.5-7" plate will be found as shown at left.

JOHN & LUCILE BRITT

Each month when I receive my copy of the HOACGA BULLETIN, everything comes to a halt while I check over the "For Sale" items. I am certain that the same is true in the homes of most of the members as evidenced by the response I had to one series of items I ran for sale some months ago. My problem is not new; in fact when I first joined HOACGA, one of the first letters I read referred to the same subject -- that of items not being in the condition that they were advertised in.

I imagine that most members buying through HOACGA, once reserving an item and mailing away their check or money order, are like me, and wait very impatiently for their items. When that item comes in damaged after being advertised as perfect or with only Good (or worse) iridescence when advertised as Excellent, I am not only disappointed but out the cost of the postage to me, the return postage, insurance and the cost of a long distance phone call to advise the seller that an item is on its way back.

I do realize that no one is perfect and it is possible to have a piece get out on occasion with some unnoticed damage and to a degree, iridescence is a matter of opinion. However, my experience with HOACGA purchases has resulted in my returning in excess of 50% of the items I have ordered. I am not a nit-picker but there is a distinct difference between excellent and poor iridescence and when one specifically asks about the feet of an item being perfect and they turned up flaked, then one becomes disgusted. Indeed, it is really a pleasant surprise to find that an item meets the specifications set forth by the seller and once in a while exceeds them.

I am well aware of the old adage "Let The Buyer Beware". However, we are all members of the same club and I feel it is something more than unethical when we attempt to deceive each other. You can get enough of that at Flea Markets and Auctions. I would like to believe that members of HOACGA care enough about each other and have enough personal pride in their glass to advertise items for sale in the true condition they are in.

MRS. JUDITH MILLER
Danbury, CT.

EDITORS NOTE: We encourage you all to speak your mind on Carnival related issues and will publish our members comments as long as they are general and not personal in nature. We must agree there are quite a number of valid points in the above letter but for an overall average, our mail order experiences have been good ones.

=====

DRAPERY VARIENT -- MORE INFORMATION

=====

The following is the major portion of a letter sent by ANGELA HALLAM to Robert Grissom:

Thank you very much for including my photograph of the Drapery Varient waterset in the HOACGA notebook. I very much look forward to seeing it.

As you may know, I am the organising secretary of the Carnival Glass Club of Great Britain, which now has well over 100 members and is growing fast.

In our #5 newsletter, I wrote about finding the Drapery Varient water pitcher and tumblers as follows:

"Four years ago I found two marigold Drapery Varient tumblers while looking round an old warehouse in Brighton. I was told they were English but could not confirm it. This pattern is shown in Marion Hartung's Book 9 on page 46, but she makes no mention of the maker.

Quite recently browsing in a bric-a-brac shop in Worthing, I spotted a jug which at first appeared to look like copper lustre seen from a distance, but on closer inspection I realized it was a rarity -- a Drapery Varient water pitcher. It was not a straight-sided pitcher, but a pretty fluted shape in mint condition and for only 10 pounds!

In his book "Carnival Glass Tumblers", Richard Owens writing about the Drapery Varient tumbler, says:

'Many collectors refuse to speculate as to the maker of this little gem. However, I have it from a reliable source that this pattern is a Jenkins Glass Company product. The water set was reportedly found packaged in the original Jenkins container. In comparing this tumbler with the Diamond & Daisy Cut, the glass has the same feel; colour and iridescence are virtually indistinguishable on the two examples photographed. Then again, this same tumbler exists in pattern glass with the circled N of the Northwood Company on its base.'

More recently, Marion Quintin-Baxendale in her book "Carnival Glass Worldwide", draws attention to the remarkable similarity between the Drapery Varient made by Northwood and a near look-a-like from the Riihimaki Glassworks of Finland. Her sketches (on page 38) which were copied from the Riihimaki catalogues, show remarkable similarities with the American Tiger Lily by Imperial, the Drapery Varient by Northwood, and the Four Flowers both by Northwood and an unknown source.

In my book on Carnival Glass, I showed two Drapery Varient tumblers and attributed them to Sowerby after they had been identified by a former mould-room foreman, but I have often had my doubts about them since, mainly because of the superb finish, the excellent iridescence and rich, deep marigold. The jug has all these same qualities. To my knowledge this pattern has not been seen in any other colour."

That was my article in the Autumn Newsletter and frankly I am still at a bit of a loss as to who actually made this lovely water set, Jenkins or Northwood. Anyway, it will be nice to see the complete Drapery Varient set in the notebook in colour.

ANGELA J. HALLAM, Organising Secretary
The Carnival Glass Club of Great Britain

AIR-CAPITOL CARNIVAL GLASS CLUB

The ACCGC met at the home of Winnie & Floyd Brim in Wichita on April 8th.

The majority of the meeting was on our fund raising project getting ready for the convention in October. We hope all of you have marked October 19-21 on your calendars and plan to be with us for our third annual convention. We have a wonderful speaker this year, Mr. Ray Notley, from London, England.

For our educational part of the meeting, we again started on the table sets in the HOACGA notebook. We will finish on those next meeting. We were pleasantly surprised by the presence of Elnora and Dan Sell of Booker, Texas, who attended the meeting. We had a nice visit with them.

Our next meeting will be at the home of Roland Kuhn and Donald Kime, in Haysville on May 13th.

DONALD E. KIME
ACCGC Secretary

=====

I N R E S P O N S E

=====

by M. Quintin-Baxendale

A quick note to identify the puzzle item shown on page 22 of the April Bulletin, pieces owned by Mr. Larry Yung.

VASE 8 3/4" tall appears in my book (in variations 2), "Carnival Glass Worldwide" on page 107, Photo number 139. This has been named "SPINNING STAR" and is in the Karhula Glass Museum Collection in Finland. It was made at the Karhula Glass Works. It appears in the 1926 catalogue under numbers 4888/4889, height given as 230mm, made on a blue base glass.

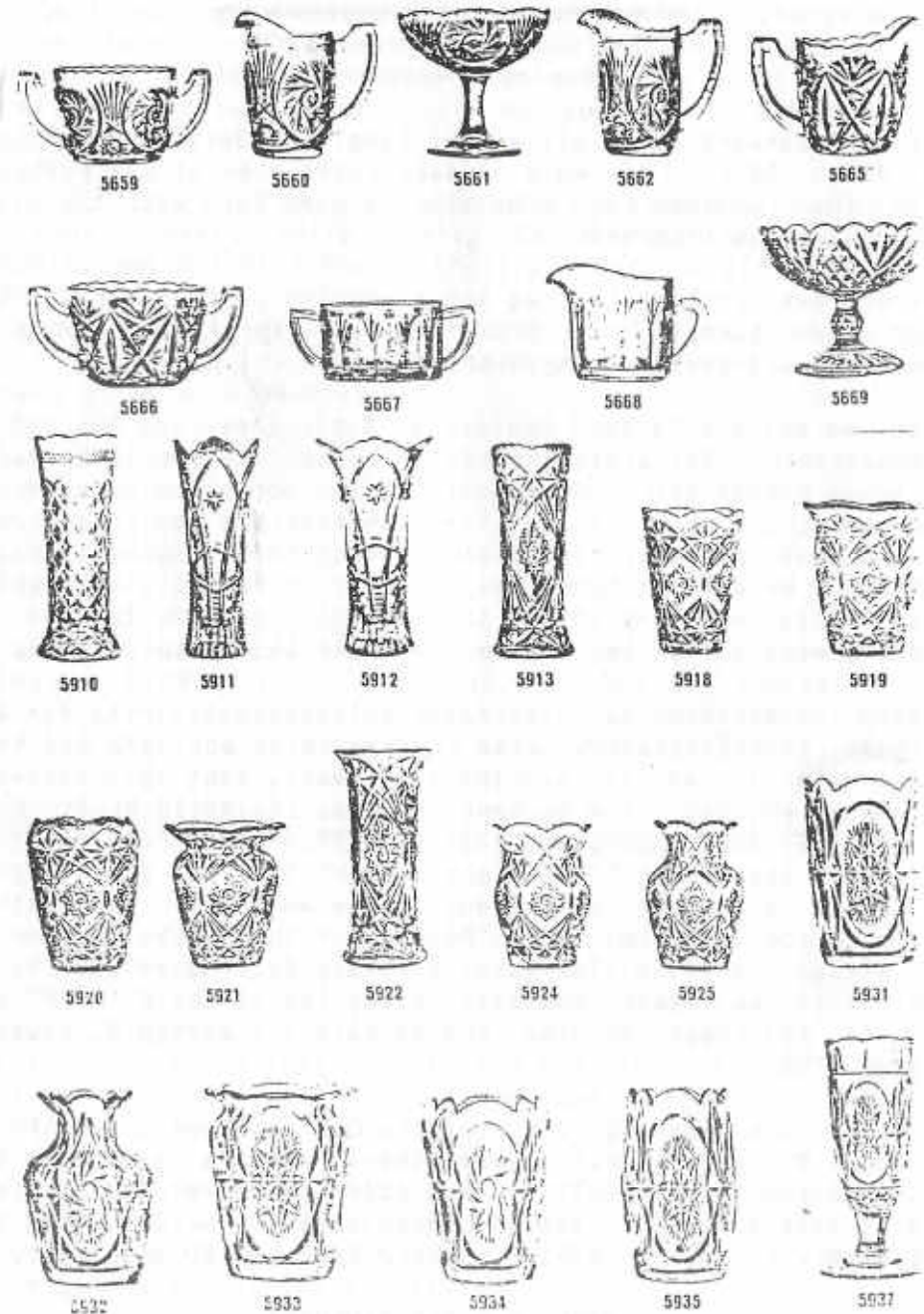
The "Star" pattern in carnival (lustre) ware of the 1930's knew many variations in the Scandinavian glasshouses. Others are depicted in my book and include pieces from Riihimaki from Finland and the Eda Works from Sweden.

There were considerable exchanges and sales of molds between these glassworks. Enclosed are some entires depicting various star patterns from the 1939 Riihimaki catalogue. Many pieces from this catalogue were iridised, perhaps some will be recognized by other collectors. I would be pleased to here of any such!

The compote belonging to Mr. Yung does NOT appear in the Riihimaki 1939 catalogue, nor the 1929 Karhula catalogue, nor in the Eda Lustre Ware catalogue of 1929. I have been assured by experts at the source that not all pieces were catalogued, depending on the quantity made. Scandinavian Lustre Ware is of excellent quality and many pieces are found in the UK and the USA. To date, only blue and marigold base colours are established (apart from the odd red-based piece from Eda, Sweden).

MARION QUINTIN-BAXENDALE
(Text and Photocopies, Copyright 1984)

Editors Note: We would also like to thank BURNEY TALLEY from Albuquerque, NM for sending us very similar information in regards to Mr. Yung's pieces.



RIIHIMÄKI GLASS CO.

=====

THE GEISINGER AUCTION

=====

After looking forward to it all winter long, the Geisinger auction finally came on March 30th. We were disappointed when it was postponed a few weeks but then decided it probably was good luck with the nasty winter hanging on as it has this year.

The weather was nothing to brag about when we left on March 29th, it was rainy and then turned into snow flurries. We stopped off at Canton to visit relatives and there was snow there too.

On Friday, we met the Raymond Heeleys at Sugar Creek and lunched at a nice Amish restaurant. We drove through the snow flurries to Millersburg for one of those famous ice cream cones. It was worth the 40 mile round trip as that ice cream has to be the best made and the biggest bargain at today's inflated prices. Then it was back to the motel to wait for the 4PM viewing. We all can hardly wait but it is fun to just visit with all the other folks who came in for the auction. So many told of 1 1/2 feet of snow so we were fortunate to have the small amount that we did get.

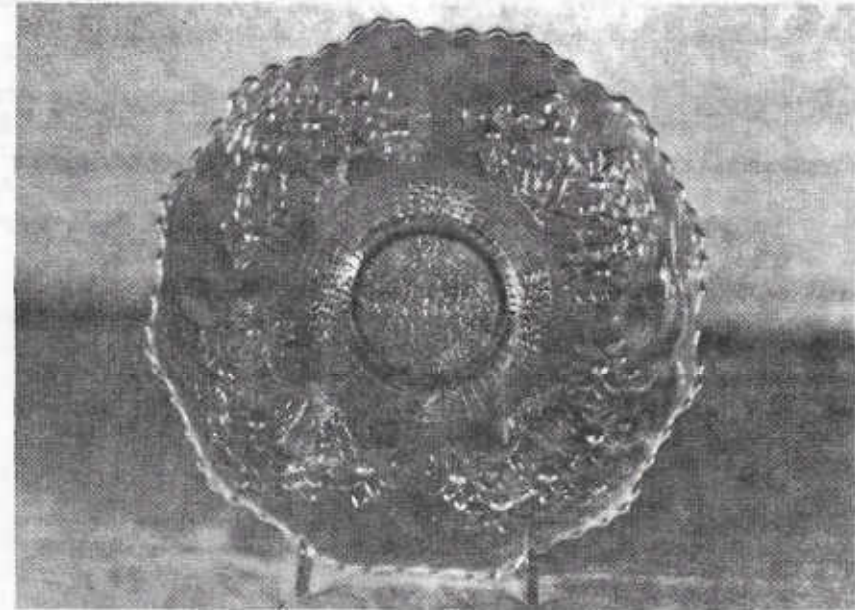
As expected, the carnival was beautiful and just asking for someone to take it home. The Geisingers hated to give it up but some health problems seemed to make it advisable. The sale really went well and we heard it grossed around \$52,000. The highest item was the WHITE BEADED SHELL MUG @ \$1225. An ICE BLUE DANDELION (KNIGHTS TEMPLAR) MUG brought \$1000 and an unusual light amethyst KITTENS piece brought \$195, no doubt a good buy as we have quite a number of Kittens but no amethyst. The amethyst Kitty went to a write in bid--Lucky People!! During the auction when this amethyst Kitten came up, Tom asked how many Kittens we had and I did not understand that he meant amethyst ones, so I said "ABOUT 60". This certainly is incorrect as the one we have are marigold, blue and a few clear. SORRY TOM.

We did enjoy the weekend and feel the Carnival season is off to a good start. John & Lucile Britt were there with a sample of the HOACGA souvenir and it is a BEAUTY!! They didn't make very many this year and are sure to sell out fast. Tom announced that his next auction will be in New Philadelphia on May 4th & 5th. Surely Spring will show up by then.

GRACE & BYRON RINEHART
Charleston, WV

Carnival Cameos

BY DONALD MOORE



ORANGE TREE (FENTON)

This famous old Fenton pattern comes in a wide range of colors and shapes. A number of collectors have specialized in this pattern, which is indeed a challenge. The shape variations and the range of colors used add to the intrigue and difficulty of collecting the pattern.

The standard size 9" plate shown here, for example, is peach opal. The black and white photo makes it difficult to see, but the opal is just on the edge of the plate on the front. On the reverse, there is a very generous application of opal which almost covers the Bearded Berry pattern. The opalescence is uneven, and I get the impression this piece is experimental.

This is the only plate I have heard of in this color and the only other pieces of peach opal Orange Tree I know of are a powder jar bottom and a hatpin holder. In iridized milk glass there is a 9" bowl and a punch bowl top.

OLD CARNIVAL GLASS LIBRARY

CARNIVAL GLASS RARITIES-A color line approach. Lists the top 10 rarities in each color-plus complete rarities price guide-40 pages of black and white pictures-special section on whimsies-\$8.50 pp. Also THE SHAPE OF THINGS IN CARNIVAL GLASS, 110 pages, 200 items in full color-\$9.95. Don Moore, 2101 Shoreline Drive, Apt 462, Alameda, CA. 94501.

CARNIVAL GLASS SERIES-by Marion T. Hartung. Each book has 100 different patterns-10 books in the series, books 1,2 and 3-\$3.00 ea, books 4 thru 10-\$3.50 ea. 1981-82 price guide-\$3.00 pp, Northwood Pattern Glass-clear, colored, custard and caranival-\$9.95, plus .50 postage. Order from Ione Henshaw, 903 East 6th Ave., Emporia, KS 66801.

CARNIVAL IN LIGHTS-A full color book on Carnival Lighting, including Gone With The Wind Lamps, Candle Lamps and shades-price guide included-\$11.95 plus postage, Helen Greguire, 103 Trimer Road, Hilton, NY. 14468.

CARNIVAL GLASS TUMBLERS-Author Richard Owens-order from Don Brown, Wallace-Homestead Book Company, 1912 Grand Ave., Des Moines, IA. 50303.

THE STANDARD ENCYCLOPEDIA OF CARNIVAL GLASS REVISED EDITION NOW AVAILABLE, many new photographs and expanded European carnival section-\$24.95 (with new price guide), NEW PRICE GUIDE includes eight color columns, size 8x11 - \$4.95, IMPERIAL CARNIVAL GLASS-THE EARLY YEARS-\$9.95, FENTON CARNIVAL GLASS-THE EARLY YEARS-\$9.95, MILLERSBURG THE QUEEN OF CARNIVAL GLASS-\$8.95, NORTHWOOD, KING OF CARNIVAL GLASS-\$9.95, Bill Edwards Author, Collectors Books, Paducah, KY.

CARNIVAL GLASS--by Ray Notley, Shires Album # 104. ISBN 0 85263 637. Price is only \$3.55 including postage. Send to 7 Hills Books, 519 W. 3rd. Street, Cincinnati, OH. 45202.

CARNIVAL GLASS WORLDWIDE--by M. Quinton-Baxendale. 200 Colour Photographs * Pattern Name Index * Exclusive Research * Clubs Worldwide Listed * Order from: CARNIVALIA PUBLICATIONS, PO Box 1, LOSTWITHIEL, CORNWALL, L22 0YZ, ENGLAND US \$13.50 (surface mail) US \$15.00 (airmail) Payment with order please, by International Cheque or Money Order.

FENTON GLASS-THE FIRST 25 YEARS-144 pages, 72 in full color, more than 400 items pictured in Fenton's carnival and iridescent "stretch" colors, rare catalogue reprints (some in color), a complete history of the factory's early years, from 1907 to 1932, \$15.95 for softcover edition with price guide, \$20.00 for limited edition hardbounds. Order from the author, William Heacock, P.O. Box 27037, Columbus, OH. 43227.

Angela Hallam's 52 page fully illustrated paperback-first book to tell about the English-made Carnival-\$3.35 surface postage, air mailed \$4.35 Order from Wise Books, 82 Chart Lane, Reigate, England, RH2 7EA.

CARNIVAL GLASS AUCTION PRICE REPORT-1984 Edition. This years edition will have approximately 4000 entries from major auctions in 1983. Single copy price is still \$8.00 US postpaid (for overseas delivery, add \$1.00). Order from: Al & Wendy Rettke, 14226 E. 143rd Lane, Burnsville, MN 55337

Presznick's "Encyclopedia of New Carnival and Iridescent Glass". A great reference book with color plates galore and prices, \$19.95. Reichel's "Modern Carnival Glass", 100 illustrated pages of Carnival made since the 1960's. Volume 1, \$4.00, Volume 2, \$4.95, Price Guide for both volumes \$2.50. Add \$2.00 for shipping and insurance. Theodore A. Parent, Box 596, RD 1, Canfield, OH, 44406.

"Encore by Dorothy" books 1 and 2. A series of books on new reproduced Carnival Glass, giving information on the patterns and colors that are being reproduced. Price for each book is \$7.70 postpaid. Be sure to state which book you want. Dorothy Taylor, Box 11734, Kansas City, MO, 64138.

"Price Guide for Imperial and Hansen New Carnival Glass, 1984-85" The first major price guide on new carnival with over 650 prices. Order from Scott or Dave Ackerman, 4677 Kennebec Dr., Cass City, MI 48726. Price \$4.00, postpaid.

"CARNIVAL GLASS" educational brochure with color photographs. Available to interested collectors or dealers who wish to better describe to and inform the public about our glass. Free of charge from the American Carnival Glass Association. Contact Ruth Schinestuhl, P.O. Box 694, Absecon, NJ 08201.

MAY 25-27

THE FIRST KEYSTONE CONVENTION

Held at the Penn-Harris Motor Inn, Camp Hill, PA. You can't phone in reservations, so write to Ruth Chronister at: 633 Greenvalley Road, York, PA 17403. There will be an auction with 180 pieces of quality Carnival on Friday.

JUNE 1-3

LINCOLN LAND ANNUAL CONVENTION

Located at the Holiday Inn's Holidome in Rolling Meadows, IL. Contact Clarence Bechtel, 463 Miller St., Beecher, IL., 60401, for more details.

JUNE 21-23

NORTHERN CALIFORNIA CARNIVAL CLUB CONVENTION

Held at the Holiday Inn Holidome in Stockton, CA. This year, there will be a catered luncheon at Gordon & Charlotte Williams'.

JUNE 27-30

INTERNATIONAL CARNIVAL GLASS ASSOCIATION'S ANNUAL CONVENTION

Held at the Drawbridge Motor Inn, I-75 & Buttermilk Pike, Fort Mitchell, KY 41017. Thursday Auction, Friday banquet and guest speaker Richard Kojis on Ice Blue Carnival.

JULY 26-28

AMERICAN CARNIVAL GLASS ASSOCIATION'S ANNUAL CONVENTION

To be held at the Sheraton Canandaigua Inn, Canandaigua, NY. For info contact: Emma Tilton, Box 273, Gnadenhutten, OH 44629.

AUGUST 9-11

PACIFIC N.W. CARNIVAL GLASS ASSOCIATION'S ANNUAL CONVENTION

To be held at the Holiday Inn in Eugene, Oregon. For more information contact: Karen Engel, Convention Chairman, 35292 Oak View Drive, Brownsville, OR 97327.

SEPTEMBER 8-9

NEW ENGLAND CARNIVAL GLASS ASSOCIATION'S MINI-CONVENTION

Held at the American Motor Inn, Sturbridge, Mass. A Tom Burns auction on the 9th. Call Howard Robinson, 413-528-1359.

OCTOBER 6-7

CANADIAN CARNIVAL GLASS ASSOCIATION'S CONVENTION

Held at the Conestoga Inn, Kitchner, Ontario. Banquet on Saturday with William Heacock as speaker. Auction date has been changed to Sunday because of a collection that was just consigned. Contact: Janet Knechtel, R.R. #1, Breslau, Ontario, Canada. Phone: 519-648-2696.

OCTOBER 19-21

AIR CAPITOL CARNIVAL GLASS CLUB CONVENTION

Ray Notley, banquet speaker. Airport Sheraton Inn, 5500 W. Kellogg, Wichita, KS 67209 phone: 316-943-2181.

=====
COMING EVENTS
=====

Our Coming Events column will be short this month with our Convention and all. I do not have anything to report since there was no program by me this month and also there were no news items either. At this time, I would like to say:

A MESSAGE FROM THE VICE-PRESIDENT

As my term of office comes to an end, I would like to thank all the people who worked with me on my "Coming Events" column by putting on a program. During my year in office, I have met so many wonderful people, and I hope everyone received something educational out of my column. It was a learning experience for me this past year. There were times when I did not know if I would be able to accomplish what I wanted to do. I wanted to try to get more people involved in the club and also have people share their knowledge of Carnival Glass with the rest of us. In many ways, I feel I have accomplished this task. It was a real challenge to put together a new program each month, and to start a new column for the Bulletin. I really did enjoy doing this.

To the people who corresponded with me, thank you for the help and information that you provided. I would also like to thank my fellow board members for all of their help during my year in office. As I leave office, I would like to thank everyone in the Club for their support and help.

I wish the best of luck to the new Vice-President, Diana Treff...and thank you for giving the chance to serve you.

MICHAEL J. BASEY, Vice-President

POLICY FOR ADVERTISING IN THE H.O.A.C.G.A. BULLETIN

1. ALL ADVERTISEMENTS, ANNOUNCEMENTS, LETTERS OR ANY OTHER ITEM TO BE PRINTED MUST BE RECEIVED BY THE BULLETIN SECRETARY BY THE 1ST OF THE MONTH TO INSURE BEING PUBLISHED IN THAT MONTHS BULLETIN.
2. MEMBER FAMILIES MAY ADVERTISE 10 FOR SALE AND 10 WANT ADS PER MONTH.
3. ONLY OLD CARNIVAL GLASS ITEMS OR H.O.A.C.G.A. SOUVENIRS WILL BE PUBLISHED.
4. DAMAGE OR MANUFACTURING FLAWS SHOULD BE NOTED.
5. ALL FOR SALE ITEMS MUST BE PRICED, NO BID ITEMS WILL BE PUBLISHED.
6. A 5 DAY RETURN PRIVILEGE AT BUYERS EXPENSE PROVIDING IT IS NOT AS ADVERTISED.
7. ALL POSTAGE AND INSURANCE IS EXTRA, TO BE PAID BY BUYER.
8. ALL ADS MUST BE LEGIBLE, OR THEY WILL NOT BE PRINTED.
9. THE H.O.A.C.G.A. DOES NOT ACCEPT RESPONSIBILITY FOR THE ACCURACY OF ANY ADS.

FOR ACCURACY OF DESCRIPTION, THE FOLLOWING COLOR KEY IS RECOMMENDED:

A--AMETHYST	G--GREEN	P--PURPLE
AMB--AMBER	HA--HONEY AMBER	PRL--PEARL-PASTEL ON MILK GLASS
AO--AQUA OPALESCENT	IB--ICE BLUE	PM--PASTEL MARIGOLD
AQUA--LIGHT BLUE-GREEN	IG--ICE GREEN	PO--PEACH OPALESCENT
B--BLUE	IGO--ICE GREEN OPALESCENT	R--RED
BO--BLUE OPAL OR BLUE OPAQUE	LAV--LAVENDER	RA--AMBERINA
CLM--CLAMBROTH	M--MARIGOLD	SM--SMOKEY
EB--ELECTRIC BLUE	MMG--MARIGOLD ON MILK GLASS	VAS--VASELINE

NOTE: IF YOU WISH TO DESCRIBE A PIECE AS LIGHT OR DARK, USE THE BODY OF THE AD.

PLEASE USE THE FOLLOWING:

EI--EXCELLENT IRIDESCENCE GI--GOOD (AVERAGE) IRIDESCENCE LI--LIGHT IRIDESCENCE

EXAMPLES:	AD EI GOOD LUCK PLATE, ONE POINT BROKEN & REPAIRED	375.
	M LI PEACOCK AT THE FOUNTAIN 7PC WATER SET, PITCHER HAS FLAKE	225.
	MMG GI PEACOCK & GRAPE BOWL	360.
	A GI WISHBONE TUMBLER, HEAT CHECK, LIGHT AMETHYST	47.50

IT WOULD BE GREATLY APPRECIATED BY EVERYONE IF YOU WOULD USE THESE CODES AS SUGGESTED.

=====

GLASS FOR SALE

=====

ROBERT LEONARD, 3130 NORTH CUSTER, MONROE, MI 48161
phone: 313-241-1720

B	EI LILY OF THE VALLEY tumbler	225.
R	EI HOACGA 1974 WATER SET	125.
P	EI GRAPE & CABLE butter dish	175.
M	EI SNOW FANCY sugar & creamer	70.

SINGLETON & CHERYL BAILEY, P.O. BOX 95, LORIS, SC 29569
phone: 803-756-7495

PO	EI APPLE BLOSSOM TWIGS low ruffled bowl	95.
PO	EI PETAL & FAN 10" bowl, pastel color	95.
PO	EI WIDE RIB vase	60.
PO	EI COIN SPOT compote	50.
PO	EI DOGWOOD SPRAYS bowl	85.
PO	EI CHERRY B 1/2" footed bowl	90.
PO	EI STIPPLED FLOWER B 1/2" ruffled or tri-shaped bowls, each	60.
PO	EI LEAF RAYS crimped nappy	42.
PO	EI HOLLY & BERRY bowl	60.
PO	EI RAINDROPS bowl	75.

DENNIS KECK, 126 CHERRY STREET, PUNXSUTAWNEY, PA 15767
phone: 814-938-7426

P	EI GRAPE & CABLE "stippled" tumbler	135.
P	GI GREEK KEY tumblers, have two, each	55.
M	EI DANDELION tumbler, N	27.
M	EI ORIENTAL POPPY tumbler	27.
IG	EI GRAPE & CABLE punch cup	90.
W	EI PEACOCK @ FOUNTAIN punch cup	65.
M	EI BIG BASKETWEAVE basket, single handle, scarce	47.
M	EI MINIATURE BASKETWEAVE handled basket	23.
G	EI IMPERIAL GRAPE wine decanter, very tip of stopper broken but sits well in the bottle	70.
G	EI WINDMILL water pitcher, scarce color, flake under bottom	60.

JUDITH MILLER, 25-4 WESTWOOD 55 MILL PLAIN RD, DANBURY, CN 06811
phone after 5 PM: 203-794-0356

M	EI BUTTERFLY & BERRY master berry bowl with FANTAIL interior	45.
P	EI GRAPE & CABLE with Thumbprint stemmed ice cream dish	50.
G	EI STIPPLED RAYS bon-bon	30.
M	EI PANTHER sauce	35.
M	EI ORANGE TREE stemmed ice cream	20.
G	EI PANSY 8 1/2" bowl, rough spot on rim, in making	30.
M	EI GRACEFUL vase	40.
P	EI LUSTRE ROSE spooner	35.
M	EI FROSTED BLOCK pickle dish	20.

CHARLES F. DODSON, 9 LINDENWOOD COURT, STERLING, VA 22170
phone: 703-430-7314

M	EI PEACOCK & URN compote	40.
M	EI WREATH OF ROSES/VINTAGE punch cups (4)	60.
LM	PONY BOWL	75.
P	EI FLORAL & WHEAT handled compote	60.
P	EI HEAVY GRAPE small berry bowl	50.
M	EI FOUR-SEVENTY-FOUR punch cup	20.
M	EI VINTAGE 5 piece berry set	75.
PO	COIN SPOT ruffled compote	50.
G	EI THREE IN ONE ruffled berry bowl	20.
P	EI DIAMOND RING fluted berry bowl	25.

DOLORES VERSPRILLE, 200 DAKE AVENUE, ROCHESTER, NY 14617
phone: 716-544-4688

M	EI COIN DOT tumbler, have 2, each	50.
G	EI SINGING BIRD tumbler	45.
M	EI LATTICE & DAISY tumblers, have 2, each	34.
M	EI FASHION tumblers, have 3, each	20.
M	EI HOBSTAR BAND tumbler	48.
M	EI SCALE BAND tumbler	18.
M	EI APPLE TREE tumbler	38.
M	EI STORK & RUSHES tumbler	25.
M	EI GRAPE ARBOR tumbler	38.
P	EI HEAVY IRIS tumbler	60.

MARIE R. MARTIN, 2220 2nd AVENUE NORTH, ST. PETERSBURG, FL 33713
phone: 813-327-2337

G	GI ZIG-ZAG bowl	150.
M	GI BUTTERFLY & BERRY table set	195.
B	EI STAG & HOLLY bowl	145.
P	EI STAG & HOLLY ice cream shaped bowl, almost lavender	165.
A	EI GRAPE & CABLE tumblers, have 3, each	35.
M	LI FLORAL & OPTIC rosebowl	50.
W	EI FLORAL & OPTIC cake plate	85.
W	GI FINE CUT & ROSES candy dish	125.
M	EI BROKEN ARCHES punch bowl, base, 6 cups, 3 small flakes rim	175.
M	GI GRAPE & CABLE cologne bottle	125.

CATHY & RICHARD FENTON, 1356 MEADOWLAWN, MACEDONIA, OH 44056
phone: 216-467-1143

TEAL	GI LOUISA footed plate	265.
M	EI TWO FLOWERS 11" footed bowl	50.
M	EI STAG & HOLLY 10 3/4" footed bowl	75.
SM	GI DOUBLE SCROLL candlesticks, the pair	47.
A	EI WREATH OF ROSES/VINTAGE punch bowl	135.
B	EI ORANGE TREE punch base	28.
A	EI STAR OF DAVID bowl	53.
A	EI FISHERMAN'S MUG	65.
B	EI VINTAGE fernery	42.
B	EI CHERRY CIRCLES 2-handled bon-bon	59.

TED L. SHEIBLEY, 304A HILLCREST DRIVE, NEW CUMBERLAND, PA 17070
phone: 717-938-6417

P	EI WILD STRAWBERRY 10" bowl	85.
G	EI TROUT & FLY ruffled bowl	330.
M	EI IMPERIAL GRAPE 7 piece wine set	180.
P	EI GRAPE & CABLE 7 piece berry set	245.
M	EI DRAGON & LOTUS 8" bowl	40.
P	EI GOOD LUCK fluted bowl	125.
M	EI GRAPE & CABLE water pitcher, N	150.
G	EI TROUT & FLY ice cream shaped bowl	375.
M	EI STAG & HOLLY spatula footed ice cream shaped bowl	75.
A	EI STAG & HOLLY spatula footed ice cream shaped bowl	85.

DICK WETHERBEE, 847 STAFFORD STREET, ROCHDALE, MA 01542
phone: 617-892-4420

P	EI FRUITS & FLOWERS 10" master berry bowl, 4 cherries	105.
M	EI KITTENS saucer, distinct pattern, very nice	85.
PO	EI HONEYCOMB/BEADS & FLOWERS 7" card tray	65.
P	EI ACANTHUS 8" deep bowl, brilliant color	58.
EB	EI FRUITS & FLOWERS 2-handled bon-bon, electrifying	95.
G	EI APRIL SHOWERS/PEACOCK TAIL 11 1/2" vase	28.
M	EI SMOOTH RAYS 6" small plate	5.
OG	EI HEXAGON candlestick, 7" tall, color is olive green	15.
M	EI IRIS & HERRINGBONE butterdish	15.
G	EI STRAWBERRY 9" plate, N	95.

RAY HITCHCOCK, RR1 BOX 301, WINTERSET, IA 50273
phone: 515-462-2074

IG	EI CORN VASE, N	195.
IB	EI NIPPON piecrust edge bowl, basketweave back	185.
G	EI LITTLE STARS bowl	75.
W	EI ROSE SHOW bowl	195.
G	EI GRAPE & CABLE hatpin holder, N	190.
M	EI BUSHEL BASKET, round, N	80.
P	EI THREE FRUITS plate, basketweave bacj	140.
M	GI THREE FRUITS varient plate, 12 sided	75.
G	EI WREATH OF ROSES/PERSIAN MEDALLION punch cups, each	30.
M	EI OCTAGON wine decanter and stopper	85.

M/M ERNEST CAUDLE, RT.1 BOX 87, STATE ROAD, NC 28676
phone: 919-874-2519

G	EI SINGING BIRDS mug, extra nice	125.
B	EI SINGING BIRDS mug, a beauty	95.
M	EI SINGING BIRDS mug, STIPPLED, nice	95.
P	EI DANDELION mug, N	250.
W	EI DAISY & DRAPE vase, a beauty	165.
M	EI GRAPE & CABLE punch bowl, base, 4 cups	235.
M	EI MILLERSBURG HOBNAIL rosebowl, a beauty	179.
EB	EI BUSHEL BASKET, as nice as they come, N	95.
IG	EI PEACOCKS ON FENCE plate	285.
R	EI STIPPLED RAYS bowl, a beauty	275.

PAGE 35

MARY C. KESTERSON, 3020 MESA ROAD, WILLOW PARK, TX 76086
phone: 817-441-8410

IB	EI FINE CUT & ROSES rosebowl	210.
IG	EI CORN VASE	225.
R	EI COIN DOT 6 1/2" bowl, good color	610.
B	EI KITTENS cup	235.
M	EI KITTENS plate	135.
W	EI BEADED SHELL mug, rare	1225.
B	EI ROSE SHOW 9" plate	315.
W	EI NIPPON bowl	90.
W	EI APPLE BLOSSOM TWIGS plate	140.

HOWARD L. BALES, RD #7, BOX 210, KIRKWOOD MOBILE HOME PARK,
BINGHAMPTON, NY 13904 phone: 607-775-3194

B	EI GRAPE & LATTICE tumblers, mint, all six for (would also buy pitcher)	240.
G	EI WHIRLING LEAVES bowl	75.
A	EI APRIL SHOWERS vase	45.
A	EI DIAMOND & RIB vase	35.
M	EI WINDFLOWER bowl	40.
M	GI NORTHWOOD GRAPE HAT	40.

Y. BEAUDRY, 438 14TH AVENUE, TWO MOUNTAINS, QUEBEC, CANADA J7R3W7
phone: 514-472-0830

M	EI INVERTED STRAWBERRY large open compote, signed NEAR-CUT	270.
---	--	------

MARY WELCH, 213 ALEXANDER, SCOTIA, NY 12302
phone: 518-393-7748

AMB	EI BLOSSOMTIME compote	50.
M	GI CRACKLE spittoon	35.
PM	GI ENGRAVED TULIP tumbler	20.
G	EI DOUBLE STAR tumblers, have 2, each	35.
M	EI BOUQUET tumblers, have 3, each	35.

SEND 2 STAMPS FOR LIST OF 350 ITEMS FOR SALE

PAGE 36

VALMER CROSS SR., PRATTSVILLE, NY 12468
phone: 607-588-6698

M	EI LOUISA salt & pepper	25.
G	EI COIN DOT 6 1/4" bowl	25.
G	EI PERSIAN MEDALLION 6 1/4" bowl	30.
M	EI FASHION 7 piece water set	275.
M	EI NORTHWOODS FLUTE sherbet	30.
M	EI SWIRL 8" plate	25.
P	EI GRAPE & CABLE tumbler, roughness on base	25.
P	EI GRAPE & CABLE spooner, chip on base	50.
M	EI GOOD LUCK, tooth broken on edge	30.
M	EI LONGTHUMBPRINT	15.

BARBARA NELSON, RFD 4 - BOX 155, LACONIA, NH 03246
phone: 603-293-7246

M	EI WISHBONE 8 1/2" bowl, small chip under one foot	25.
M	EI CORN VASE, N, minor nicks on some kernals	175.
G	EI LEAF & BEADS rosebowl, 1 1/2" internal fracture in one foot	25.
P	EI WISHBONE 8" bowl, 2" internal fracture	25.
B	EI TWO FLOWERS 3 footed deep bowl, orange bowl shape	75.
IG	EI HOLLY hatshape, IG on base only, rest is M with 2 sides up	35.
M	EI STRAWBERRY 9" plate, tiny flat flake inside one point, N	45.
PD	EI FLORAL & WHEAT bon-bon, opal 1/2" top rim & handles	55.

D.W. EVANS, 617 EAST 18TH STREET, SOUTH SQUIX CITY, NE 68776
phone: 402-494-5269

G	EI LOGANBERRY VASE	180.
M	EI PRINROSE radium finish fluted bowl, small flake inside	30.
G	EI DOUBLE STAR tumbler	45.
G	EI TIGER LILY flared tumbler	35.
A	EI LOUISA rosebowl	45.
A	EI DAISY & PLUME compote	40.

MARY HERREN, 520 SOUTH BERRY, MORGANFIELD, KY 42437
phone after 5PM: 502-389-3121

M	EI VINTAGE wines, light marigold, have B, PRICE FOR ALL	110.
W	GI CHERRY CHAIN/D.T. 10 1/2" fluted bowl, frosty	69.
M	EI COLUMBIA compote, clear stem & foot	25.
G	EI LOUISA rosebowl, small nick in pattern	30.
M	EI HOLLY compote	10.
A	EI MILLERSBURG BLACKBERRY 6" fluted dish, super color	30.
G	EI ROSE WREATH compote	30.

AL RETTKE 14226 EAST 143RD LANE, BURNSVILLE, MN 55337
phone: 612-432-7489

G	EI GOOD LUCK plate, hard to find	350.
IG	EI PEACOCKS plate	275.
IB	EI GRAPE & CABLE banana bowl, chip, call	300.
IB	EI HEARTS & FLOWERS ruffled bowl, flake	75.
B	EI PINE CONE small plate, super iridescence	70.
W	EI FANCIFUL very low bowl (or plate?), fantastic color	125.
P	EI BLOSSOMTIME compote	115.

A NOTE CONCERNING PAGE 7

For those of you who do not know him, the man shown on this page is DON MOORE. It is definately OK to take his check and this was just a little joke.

Don, I hope you're still laughing, because I still need those articles!



=====

GLASS WANTED

=====

SINGLETON & CHERYL BAILEY, P.O. BOX 95, LORIS, SC 29569
 phone: 803-756-7495

ANY COLOR BIG FISH BOWLS

MARY HERREN, 520 SOUTH BERRY, MORBANFIELD, KY 42437
 phone after 5PM: 502-389-3121

M EI FOUR-SEVENTY-FOUR tumblers, need up to 4
 W EI FLORAL & GRAPE tumblers, need up to 4

AL RETTKE 14226 EAST 143RD LANE, BURNSVILLE, MN 55337
 phone: 612-432-7489

IB, B WISHBONE FOOTED BOWLS
 IB GRAPE & CABLE POWDER JAR LID or any other IB G&C
 G SINGING BIRDS BUTTER BASE
 DM PEACOCK & URN MASTER I.C.
 AO PEACOCKS BOWL
 IG, IB FRUITS & FLOWERS OR THREE FRUITS BOWLS-ANY SIZE

D.W. EVANS, 617 EAST 18TH, SOUTH SQUIX CITY, NE 68776
 phone: 402-494-5269

A GRAPE & CABLE SUGAR BOTTOM

MARY WELCH, 213 ALEXANDER, SCOTIA, NY 12302
 phone: 518-393-7748

MARIGOLD BASE TO MANY FRUITS PUNCH TOP

DENNIS KECK, 126 CHERRY STREET, PUNXSUTAWNEY, PA 15767
 phone: 814-938-7426

G EI MILLERSBURG HOBNAIL BUTTER BASE
 M EI MILLERSBURG HOBNAIL SUGAR BASE
 M GI GRAPE & CABLE PERFUME STOPPER, light color OK
 P EI GRAPE & CABLE BUTTER BASE
 M EI GRAPE & CABLE COOKIE JAR LID
 W or P MANY FRUITS PUNCH BASE
 P EI MULTI FRUITS & FLOWERS PUNCH BASE AND/OR CUPS
 W EI ORANGE TREE PUNCH BASE AND/OR CUPS
 M or G WREATH OF ROSES PUNCH BASE
 M EI FENTONIA BUTTER LID

JACK STEWART, 99 ASTER CIRCLE, WEYMOUTH, MASS 02188
 phone: 617-337-1304 ANYTIME

RED STIPPLED RAYS CREAMER
 AQ SINGING BIRDS MUG
 AMB SINGING BIRDS MUG
 B SINGING BIRDS MUG--STIPPLED
 RED ORANGE TREE SHAVING MUG
 RED FASHION PUNCH CUP
 G SAILBOATS LARGE GOBLET
 P ORANGE TREE WINE
 AQ ORANGE TREE MUG
 ANY NEAR CUT WINE

DEAN & DIANE FRY, 5395 MIDDLETON ROAD, SAN DIEGO, CA 92109
 phone evenings: 619-272-1663

B DAISY BON-BON
 B PINE CONE PLATE 7 1/2 to 8"
 B AMYRILLIS COMPOTE, PASTEL
 W PALM BEACH ROSEBOWL
 B RAGGED ROBIN BOWL
 M SWIRL MUG
 CHERRY RED ORANGE TREE MUG
 PO FLOWERS & FRAMES DEEP FLUTED, FOOTED BOWL
 A FLEUR DES LIS FOOTED TRI-CORNERED BOWL
 ANY DIAMOND POINT BASKET

HOWARD O. ROBINSON, 8 STILWELL STREET, GT. BARRINGTON, MASS 01230
phone: 413-528-1359

A EI STRAWBERRY EPERGNE LILY
B EI GRAPE & CABLE STIPPLED PUNCH CUPS, NEED 4
M EI GOLDEN HARVEST WINES, NEED 4
P EI DIAMOND LACE TUMBLERS, NEED 4
M EI MEMPHIS PUNCH CUPS, NEED 4
A EI MAPLE LEAF BERRY DISHES, NEED 4

ERNEST & LYDIA CAUDLE, RT.1 BOX 87, STATE ROAD, NC 28676
phone: 919-874-2519

ICE BLUE PITCHERS & TUMBLERS
ANY GOOD WATER SETS
ANY GOOD PLATES
ANY PASTEL OR RED ANY PATTERN

TED SHEIBLEY, 304A HILLCREST DRIVE, NEW CUMBERLAND, PA 17070
phone: 717-938-6417

ANY DRAGON & BERRY BOWLS
ANY SINGING BIRDS TABLE SET
ANY PEACOCKS PLATES OR BOWLS
P SINGING BIRDS WATER SET

BARBARA NELSON, RFD 4 - BOX 155, LACONIA, NH 03246
phone: 603-293-7246

P CONSTELLATION COMPOTE
IB FENTON'S TWO ROW OPEN EDGE BASKET, ANY SIZE OR SHAPE

Y. BAUDRY, 438 14TH AVE., TWO MOUNTAINS, QUEBEC, J7R3W7 CANADA
phone: 514-472-0830

B FINE CUT & ROSES ROSEBOWL, GOOD FEET ONLY
A or P FINE CUT & ROSES ROSEBOWLS, FANCY INTERIOR AND GOOD FEET ONLY

PAGE 41

RAY HITCHCOCK, RRI BOX 301, WINTERSET, IA 50273
phone: 515-462-2074

DM TEN MUMS 10" SIX RUFFLED BOWL

A.C. DICKEY, 144 CHANDLER STREET, VACAVILLE, CA 95688

AQUA N'S PEACOCKS BOWL (BLUE)
IG N'S PEACOCKS BOWL

TAMPA BAY CARNIVAL GLASS CLUB NEWS

The TBCGC held it's regular monthly meeting April 15th as the guests of Lily & Eddie Laman of Auburndale. Following the traditional noon buffet, the business meeting was called to order by President Art Smith. Art welcomed new members Susie and Rodney Hardee who recently started collecting carnival glass. Art pointed out that the future of the carnival glass collecting hobby is dependent on new collectors joining our ranks. Art also welcomed members June & Jesse Stamper who drove the greatest distance for the meeting.

A resolution was adopted to hold the Fourth Annual Lose Your Heart To Carnival Glass Jamboree on February 14-16, 1985. A special Valentine's Day Hospitality Room will be held on the evening of the 14th, carnival glass forums on the 15th during the day, followed by a banquet that evening. The display rooms will be open on the 16th with a gala Tom Burns auction that evening. On the 17th, an open house will be held in a member's home. Details will be announced as available.

A white elephant auction was held with Phil Graham as the able auctioneer with the proceeds going to the club treasury. The next meeting will be with Shirley & Maurice Conyers at their home in Madeira Beach on Sunday, May 20th, at noon.

AURTHUR I. SMITH

PAGE 42

HAVE A FRIEND WHO COLLECTS CARNIVAL BUT IS NOT A MEMBER? OR MAYBE SOMEONE WHO YOU HAPPEN TO MEET AT A SALE, SHOW OR AUCTION. BE AN ACTIVE MEMBER AND HELP YOUR CLUB GROW, AND GIVE THEM THIS APPLICATION. TEAR OUT OR XEROX THIS PAGE AND PUT IT IN YOUR BILLFOLD OR PURSE SO YOU WILL HAVE IT WITH YOU WHEN THE OCCASION ARISES.

Application For Membership

HEART OF AMERICA CARNIVAL GLASS ASSOCIATION

DATE _____

NAME: _____

SPOUSE: _____

ADDRESS: _____

CITY: _____ STATE: _____ ZIP CODE: _____

TELEPHONE (optional): _____

Do you want your name in the directory? YES _____ NO _____

DUES: \$20.00 per year--JUNE to JUNE--Couple or Family membership

We offer the best in monthly news and educational articles.

SEND DUES TO: H.O.A.C.G.A.
Diane Tref, Secretary
13646 Leavenworth Road
Kansas City, KS. 66109

Recommended by: _____