

H.O.A.C.G.A.
BULLETIN SECRETARY
AL RETTKE

=====

FIRST CLASS MAIL

=====

JUNE 15, 1984



CHECK YOUR ADDRESS LABEL

IF IT SAYS 6-84, YOUR DUES ARE DUE

Your membership has expired and

you are no longer a member

** DON'T MISS AN ISSUE, RENEW NOW **



**Heart of America
Carnival Glass
Association Inc.**

Membership June to May
\$20.00 per couple or single

Published the 15th
of each month

PRESIDENT

Cooley Miller
7605 N.W. Eastside Drive
Kansas City, MO 64152
816-741-4635

VICE-PRESIDENT

Diane Treff
13646 Leavenworth Road
Kansas City, KS 66109
913-721-2917

TREASURER

Karen Engel
35292 Oak View Drive
Brownsville, OR 97327
503-466-5989

SECRETARY

Lucile Britt
3048 Tamarak Drive
Manhattan, KS 66502
913-539-1933

BULLETIN SECRETARY

Al Rettke
14226 East 143rd Lane
Burnsville, MN 55337
612-432-7489

All monetary figures quoted are in U.S. dollars.
Please make checks for dues payable to H.O.A.C.G.A.
and send them to the secretary as listed above.

MAY MONTHLY MEETING OF THE H.O.A.C.G.A.

On May 27, 1984, President George McGrew called the meeting to order at 2PM. Secretary Diana Treff read the minutes of the April Annual Meeting. An error in the minutes resulted in the following amendment: "Mike Basey was nominated for the office of President. Mike Basey declined the nomination." The original minutes recorded Mike Basey as being nominated for Vice-president. With no further additions or corrections, the minutes were accepted.

Treasurer Elizabeth Bolles gave the Treasurers report as follows: For period of 6-1-83 through 4-30-84, TOTAL RECEIPTS \$38,268.81, TOTAL EXPENSES 33,268.81. This leaves a net increase to the fund of \$5290.06. Cash assets of HDACGA consist of \$3823.40 in our NOW account and \$12,870.74 in our Investment account. TOTAL CASH ASSETS ARE \$16,694.41. With no additions or corrections, the Treasurers report was accepted and placed on file. Elizabeth also reported that she is now ready to transfer funds to the bank which Karen Engle, our 1984-85 Treasurer, has selected. Lucile Britt reported that we have only 24 fernerys left in our inventory.

President McGrew thanked Board members and all other members present for their support in the last four years. He wished the new board members luck for the upcoming year. President McGrew then turned the meeting over to 1984-85 President, Cooley Miller.

President Miller reported that he and George McGrew had been to Lawrence to check out the Holiday Inns facilities. The hotel itself could accomodate our club for a convention. Room rates were higher than those at KCI and they do have another group they are committed to during convention week. The Holiday Inn at 95th Street does not have enough rooms. Those members present requested President Miller to speak to the management of the KCI Holiday Inn about having the 1985 convention there.

President Miller recognized Treasurer Elizabeth Bolles for her five years of service. He also announced that the July Picnic will be at "C" point on Wetherbee Lake. A map will be published in the next Bulletin.

President Miller requested George Bolles to check with the main post office on the specific stipulations and requirements of mailing at a not-for-profit mailing rate. THE CLUBS DISPLAY CASE IS AGAIN FOR SALE.

George McGrew made a motion to have the 1985 table favor mug made in the color Heather Bloom. There are 300 to be made. The motion was seconded by Mike Basey, voted on and carried.

With no further business, the meeting was adjourned. Next meeting to be at the KCI Holiday Inn on June 24, 1984 at 2:00 PM.

DIANA TREFF, Secretary

MEET YOUR CLUB OFFICERS



VICE-PRESIDENT DIANA TREFF, husband BILL, son WM. DEWAYNE TREFF, JR.

I would again like to thank you all for your support during the past two years when I served a Secretary.

As happened two years ago, I have a tough act to follow; Mike Basey did a great job as Vice-President. HELP ME KEEP OUR MONTHLY PROGRAMS GOING!! For you folks out of the Kansas City area, SEPTEMBER is your month!!

My husband would like to report that taking the office of Secretary was great...I became more organized. But..this Vice-President business has really gone to my head!

**** SLATE OF PROGRAMS FOR HOACGA MONTHLY MEETINGS: ****

- JUNE: STILL OPEN
JULY: ANNUAL PICNIC - Bring a guest, yard games and a covered dish.
AUGUST: Local members share convention purchases, recent buys and related stories.
SEPTEMBER: OUT OF TOWN MEMBERS, LETS HEAR FROM YOU!! Send photos, new finds, letters on carnival or to the club on general issues. Photos from other club conventions, absolutely ANYTHING pertaining to carnival glass or our club. I CHALLENGE THE EASTERN MEMBERS & WESTERN MEMBERS TO SEE WHO CAN SEND ME THE MOST MAIL!!
OCTOBER: NATIONAL CARNIVAL GLASS MONTH, recruit a friend into the hobby, set up a display in a local store window, PROMOTE OUR GLASS!!

OTHER PROGRAMS PLANNED include a Swap & Shop, Notebook Study and NAME THAT PATTERN.

I could use volunteers and material. Anyone interested, please contact me at the address on page 1.

MEET YOUR CLUB OFFICERS



TREASURER KAREN ENGEL, husband DOUG, son TERRY

As members quite a ways away from HOACGA's Kansas City home base, we felt that one of the few jobs I could do for the club would be that of it's Treasurer. I have worked in a bank for the last 13 years and feel that I can do the job for the club through the mail and by attending the annual meeting at the convention.

We have been collecting since 1976; first purchase was an amethyst Fenton Peacock & Urn bowl. I've always said that we don't specialize in one item, but in looking at our collection, Mugs and Plates are starting to outnumber the other items.

I have been Secretary of the Pacific Northwest Carnival Glass Club for four years and am currently serving a two year term as Vice-President. I was Convention Chairman last year and am Chairman for the 1984 Convention. Without the help and support of my family, I wouldn't be able to do these jobs, so I must give them credit also. Doug provided and prepared the Saloon for our BBQ at last years convention and has promised to do the same this year. Terry has grown up around Carnival Glass and Carnival Glass Collectors, attending local conventions and the 1983 HOACGA convention.

We thoroughly enjoy our Carnival Glass Hobby and the many friends we have gained and I will do my very best to serve the Club as Treasurer.

FROM THE EDITOR: This series will continue next month.

THERE HAVE BEEN SOME CHANGES IN THE FORMAT OF THE BULLETIN THIS MONTH, LET ME KNOW IF YOU FEEL THIS TYPE SIZE IS ALRIGHT FOR ARTICLES. THE IRIDESCENCE COLUMN WAS DROPPED BECAUSE NEARLY ALL OF THE "FOR SALE" GLASS WAS "EI" AND IF YOU ARE INTERESTED IN A PIECE, YOU WILL CERTAINLY CALL THE PERSON AND ASK ABOUT IT.

1984 SOUVENIR NOTES

Everyone who has ordered the red Fernery (except Australian members) should have it by now. Surface mail to Australia may take three months. If you have not received your souvenir or it was damaged, please let us know as there are a very limited number available. As of May 15th, we have no word of broken or damaged souvenirs.

JOHN BRITT & ROLAND KUHN
SOUVENIR CO-CHAIRMEN

P.S.: We still have a few of the little table favor mugs from the convention left to sell. They cost \$10 each, please send orders for them to Lucile Britt, 3048 Tamarak Dr., Manhattan, KS 66502

NEW ENGLAND CARNIVAL GLASS ASSOCIATION'S CONVENTION SCHEDULE (Tentative)

September 8th: 10-11AM Dealers Show & Sale, 11AM-4:30PM open to public.
7PM Banquet, Roast Beef Dinner, price \$12 per person.
September 9th: 9AM Auction preview & auction

If you are planning on attending the Brimfield Shows in September, why not come to our 2nd annual Mini-Convention, Show, Sale and Auction at the Best Western American Motor Lodge in Sturbridge, Massachusetts? We have reserved a block of rooms for dealers and collectors who are interested in selling or showing Old Carnival Glass.

Room reservations must be received by August 1 WITH A DEPOSIT.
Banquet reservations must be paid in full by August 21st.

FOR MORE INFORMATION, WRITE OR CALL BETTY E. PALMER,
71 Lyman St., S. Hadley, Mass., 01075
phone days: 413-536-2123
after 7PM: 413-536-4319.

GET WELL MARGE!!!

Marge Miller had surgery this last month and should be home resting. You may write or call her at the address listed inside the front cover.

HOACGA CONVENTION REPORT

The HOACGA convention at the K.C.I. Airport Holiday Inn was a real success. People started checking in on Monday. Thursday we had a nice luncheon and HELEN JAMES was our guest speaker. It was quite interesting to hear how she got started collecting carnival and the good time she and Kenny had finding goodies. Our thanks to Helen (shown below in left photo) for that segment of our convention.



Also at the luncheon was a surprise presentation of the only known BLUE PACIFIC COAST MAIL ORDER HOUSE ORANGE BOWL. DON & CONNIE MOORE are shown handing it to FRANK FENTON (on the left) as a gift for the FENTON ART GLASS MUSEUM. Don and Connie had the opportunity to purchase this piece about 15 years ago but passed because of a damage. It was then bought by the late G. JOE OLSON and was recently sold to the Moores by RUTH OLSON. This is an extreme rarity, the only other two Grape & Cable orange bowls with this advertising (both marigold and one cracked), were sold in the CARROLL AUCTION last fall @ \$1450 & \$950.

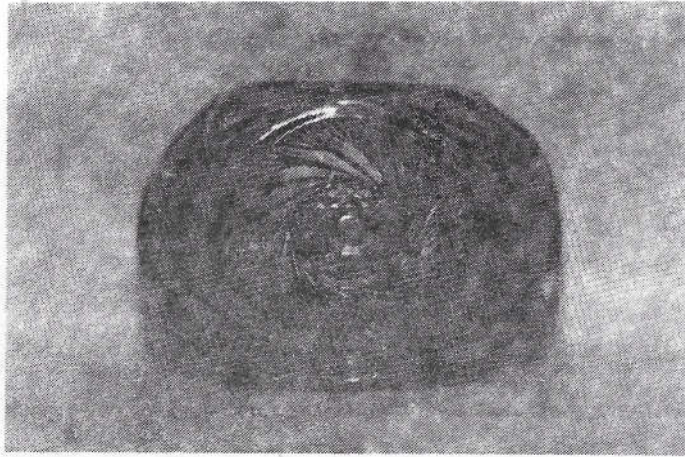
MARION QUINTIN-BAXENDALE sent a video tape of her appearance on ITV (UK) in late 1983. The video was shown at intervals in one of the hospitality rooms during the convention. THANK YOU MARION! Thursday evening was a panel discussion headed by JOHN BRITT. Also on the panel were DON MOORE, FRANK FENTON and TOM BURNS. Members brought glass of different colors, shapes, etc.

Friday evening was our banquet, very good I might add. The highlight of the evening was the program put on by FLOYDE & CECIL WHITLEY. They showed quite a number of pieces and had many interesting stories to share. Floyd and Cecil did an excellent job presenting the program and really held our interest. Our thanks to the Whitleys for a most enjoyable program well done. By the way, in past years HOACGA has paid for the banquet speakers room or other expense. Floyd & Cecil declined this and donated it back to the club.

There are a number of people who are to be thanked for their efforts: Display awards handled by FLO CUNNINGHAM. Hospitality rooms by FRANK RONK, ANNA BELL VAUGHN, VIOLA SHIKLES. Chuck Wagon by SADIE TREFF, FLORENCE MULLINS, CONNIE KATOWITZ, ARDYTH SPRY, VIOLA SHIKLES, JOSEPHINE KATOWITZ, DIANE TREFF, MARGE MILLER. There was a lot of glass sold in the rooms and we would like to thank all members who attended the convention, the attendance was up this year. HOPE TO SEE YOU ALL NEXT YEAR!!!

COOLEY MILLER & DAVIS SHIKLES -- CONVENTION CO-CHAIRMEN

PICTORIAL PATTERN PARADE
by John & Lucile Britt



"AZTEC"
A RARE ROSEBOWL

The "Aztec" rosebowl that is shown above was part of the Bill Carroll collection and sold for \$325 at his auction. "Aztec" is a McKee Glass Company pattern and was a very popular line from that company. It was made in many different pieces in large quantities in clear pressed glass. McKee was not known as a producer of carnival glass, but evidently they did a little experimenting with this type of iridised glass. I know of only a sugar, a creamer, water pitcher, rosebowl and three tumblers in carnival glass. All of these pieces contain the well-known "PRES-CUT" trademark in the bottom of the base. There are a few other McKee patterns that are known to have been made with iridescence. We have a "Rainbow" pattern small juice tumbler and I know of a few "Heart-Band" tumblers. These iridised pieces are considered quite rare. A marigold vase in the "Nortec" pattern was sold in the Harsch collection at the HOAGCA convention. "Nortec" is one of McKee's long series of "tec" patterns which also included: Fentec, Yutec, Bontec, Carltec, Plutec, Sextec, Martec, and Quintec, just to name a few. We have a number of ruby stain tumblers in these McKee "tec" patterns. This company was well known for their production of this type of glass. It was very popular in the 1890-1915 era.

The featured "Aztec" rosebowl has a light marigold iridescence showing quite a few pinks. It is 3 3/4" high and 4 1/2" in diameter at the center of the bowl. The opening at the top is only 2 1/4" wide and the base 3". The whirling star figures are used three times around the bowl and is also pressed into the bottom of the base. It is a very pretty rosebowl and is extremely rare. We know of no other examples.

*** NEWS FROM TEXAS ***

The Texas Carnival Glass Club met at Hvatt's Cafeteria in Bryan, Texas on May 20, 1984. In the absence of President Don Staley, the meeting was presided over by Vice-President Doyle Green.

Minutes of the last meeting were accepted as printed in the Bulletin. The Treasurers report was given by Cecil Whitley. Dues for the coming year were accepted.

The rising costs of printing and mailing the Bulletin were discussed with the possibility of raising the dues to \$10 in 1985. No action was taken.

The club decided to hold an auction at the August meeting. Each member was asked to donate a piece of Carnival Glass worth at least \$25, or in lieu of glass, a donation of \$25. All proceeds will go to the club.

A motion was made to allow each person making a \$25 donation of glass or cash to place other pieces of carnival with a greater value in the auction on consignment with no other cost to the owner. Motion carried.

A report was given on the HOAGCA convention. Twenty-three members from Texas attended and reported having a great time. A delicious buffet lunch was enjoyed by 26 members.

The next meeting will be held in Waco, Texas on August 18th at 10:00AM.

JANE BROWN, SECRETARY TCGC

*** NEWS FROM CANADA ***

I want to thank you for the coverage given us in your Bulletin in connection with our Convention. The hotel has give us an extension on the rooms for the Conestoga Inn until July 1, 1984.

JANET KNECHTEL, BRESLAU, ONTARIO

IN MEMORIUM

GERALD COLE, 610 Marvin Ave., St. Joseph, MI 49085

Passed away February 23, 1984

In Praise Of The Poor Man's Tiffany

Carnivalitis Strikes In Sturbridge

Last month New England Country Antiques accepted an invitation to visit a meeting of the New England Carnival Glass Association in Sturbridge, Massachusetts. The club was formed four years ago, to bring together the growing number of dealers and collectors who just can't get enough of the colorful, rich-looking, fanciful stuff.

This light-hearted but still serious group meets at noon on the third Sunday of every other month, at the American Motor Lodge in Sturbridge. For their March meeting, members had been asked to bring their green carnival glass, for show-and-tell, and maybe sell. Many had done so.

The business meeting was presided over by President Bill Ament, of Greenfield, Massachusetts. Regular business out of the way, the group, over 60 in number, proceeded to make plans for the mini-convention they're planning for September 7,

8, & 9 at the American Motor Lodge.

It sounds like quite a wing-ding. There'll be a banquet, sales set-ups, and an auction as well. Howard Robinson, of Great Barrington, Massachusetts, who is the convention chairman, reminds members that reservations for the banquet must be made by August 1, so those with heavy schedules should make a note of the dates now.

After the business meeting, during the show-and-tell period, we savored a cup of coffee and a cookie and learned a few things we didn't know about carnival glass.

Alan Israelson, of Auburn, Massachusetts, told us that the major companies who manufactured the glass between 1908 and 1920 made more than a thousand patterns. "Carnival," he says, is the common but vulgar name for the glassware, the correct term is "taffeta glass."

The Fenton Glass Company, of West Virginia, originated the product, which was intended as an

inexpensive copy of Tiffany's art glasses we were told. For a time, Fenton's formula for the fascinating new glass, which gleamed in beautiful and colorful iridescent tones, remained a secret. Then Harry Northwood, who had, so to speak, grown up in the glass business, sent samples of Fenton's creation to his father in England. With his father's help, he "cracked the Fenton code," and the field was opened. Northwood, who operated his own company in Indiana, Pennsylvania, became a major manufacturer of the "poor man's Tiffany," as carnival glass came to be called.

Harold Robinson expanded some upon Alan's observations. Basically, he related, Carnival Glass is moulded, iridescent glass that was mass produced at the beginning of the century. It was usually press moulded by hand, but occasionally blow moulded. The moulds themselves were incredibly detailed with patterns prominently exposed on most pieces. As it was cooled, the glass was sprayed with chemicals which not only gave it the rainbow hues but also

became an integral part of the glass.

This technique was the same as used by 19th century artisans such as Louis Comfort Tiffany, but Carnival Glass was intended for the man on the street, hence, the name "Poor Man's Tiffany".

Having been mass produced, it was inevitable that the market would become saturated. The manufacturers, in their efforts to dispose of the overstock, offered it at ridiculously low prices to carnivals, theatres and such to be used as premiums, thus came about the name "Carnival Glass".

The Fenton Art Glass Company, as we have noted, started in 1908 and was

followed by the Northwood Company, Millersburg Glass, The Imperial Glass Company and the Dugan-Diamond Glass Company.

Although the Glass was mass produced it was still the age of the Craftsman, and a great deal of skill went into the making of moulds and into the finishing of each item. Mass production was not accomplished as we know it today through the use of machines and computers, but by the use of manpower to manufacture the finished product.

The most popular colors were the Marigolds, Purples, Greens and Blues, but other pieces may be found in various colors and shapes. For the novice collectors the best advice is to choose pieces that are unusual in color and free from blemishes such as chips, cracks, poor iridescence or poor coloring.

The novice must also guard against the disease known as "Carnivalitis," he says, which is not only very contagious but also practically incurable.

Notable among the pieces displayed at the meeting in Sturbridge was a Northwood wide-panel epergne, owned by Betty Palmer of South Hadley, Mass. It is a rare and valuable piece,

and elicited much admiration from everyone.

Joe and Rachael Valenti of Waterbury, Connecticut, had an unusual display of items we'd never associated with the term, "carnival glass." They own an assortment of jewelry and clothing accessories — hats, bags, hatpins, buttons, made of or adorned with the shiny stuff.

The New England Carnival Glass Association, still in its infancy, boasts around 100 members according to membership chairman Eva Backer and they're still growing. New members are always welcome, Eva says — you don't need any special qualifications — just an interest in carnival glass. The club offers an opportunity to pool knowledge and a friendly way to keep up with what's going on in the business.

Linwold Hart, whose wife Eleanor is secretary-treasurer for the association, brought a laugh from the crowd when he made an eloquent speech concerning membership in the group, ending in the words "it offers fellows like me a reason to get out of retirement and back to work — to support the carnival glass habit — I like females, myself, but carnival glass is pretty, too!"



Linwold Hart of Plymouth, Massachusetts, sporting a carnival glass tie holder.



Eva Backer, of West Hartford, Connecticut, wearing a carnival glass necklace.

It was approximately 1:15PM and we were working on last minute things for our trip to Kansas City and the HOACGA convention. Then the earthquake struck. It registered 6.2 on the Richter scale and caused great property damage in our town of Morgan Hill, California.

It took only 20 seconds to wipe out about 25% of our Carnival Glass collection. We are relatively new collectors, having been "on the trail" for about three years, but we managed to put together a nice collection containing some rather scarce and rare items. These included a blue Butterfly & Berry hatpin holder, ice blue stretch Lemonade Set (two tumblers came from the Fenton Museum), green Greek Key water set, green Hobstar & Feather giant rosebowl, marigold Rising Sun water pitcher - just to name some of them.

I was so devastated by the loss that I wanted to withdraw from all Carnival Glass activities, but the many Club members who called us were so caring and heartwarming that I have changed my mind and decide to continue. Peggy and I express our regrets for missing the convention, but we'll be back next year. THANK YOU ALL FOR YOUR KIND THOUGHTS.

sincerely yours,

CHUCK & PEGGY BULLARD

AIR CAPITOL CARNIVAL GLASS CLUB MAY MEETING

The May meeting was held at Haysville, KS, at the home of Roland Kuhn & Donald Kime on May 13th, 1984. There were 12 members and 5 guests present.

Tom Burns will have the auction for our October convention. Visiting with him at the HOACGA convention, I learned he already has some nice pieces for us.

The banquet committee will be meeting with the motel finalizing plans. This year all those attending the banquet will be treated to a little surprise as well as being able to hear and see our speaker, Mr. Ray Notley from London. Roland Kuhn, Convention Chairman, has his committees working on the arrangements, so we hope you are planning on joining us October 19-21.

We will be sending out pro-registration letters and information at a later date, so be watching for this information.

DONALD E. KIME. ACCGC Secretary

*** THE ARNESTEIN AUCTION ***

For the second time in five weeks, we traveled to New Philadelphia, Ohio on May 4th & 5th for another Tom Burns Auction. The Arnesteins of Cincinnati were selling their collection of 16 years.

It seemed so unusual that there was no snow like at the March Sale, but it was cold and rainy. Springtime seems reluctant to come for over a day at a time this year. Anyway, the weather never prevents any of us from going so a nice sized crowd gathered for the 4PM viewing. It was a lovely collection too, how else could you describe carnival glass?

Everyone settled down by seven for the auction to begin. There was speculation over what piece might bring the top price and the top two items turned out to be the Peacock Garden marigold vase at \$1200 and the Grape & Cable plate in teal blue at \$1250. A pretty Hearts & Flowers plate in ice green brought \$1000. We thought prices held up good but may have been slightly lower than Geisinger's auction, the sale grossed around \$50,000.

On the way to the auction, we bought a surprise birthday cake for Byron at the Millersburg Bakery, it was a few days early but several friends did stop by the room after the Friday evening auction.

We did not stay to the very end as we had to hurry home and be at the Fenton Glass Company on Monday to watch the ACGA souvenirs being made. We met the Tiltons and Funks at the factory and the souvenirs came out without a problem. We only made 285 this year and 10 whimsys and they are all very nice. The Fenton Company really goes all out to see that everything is satisfactory to all concerned.

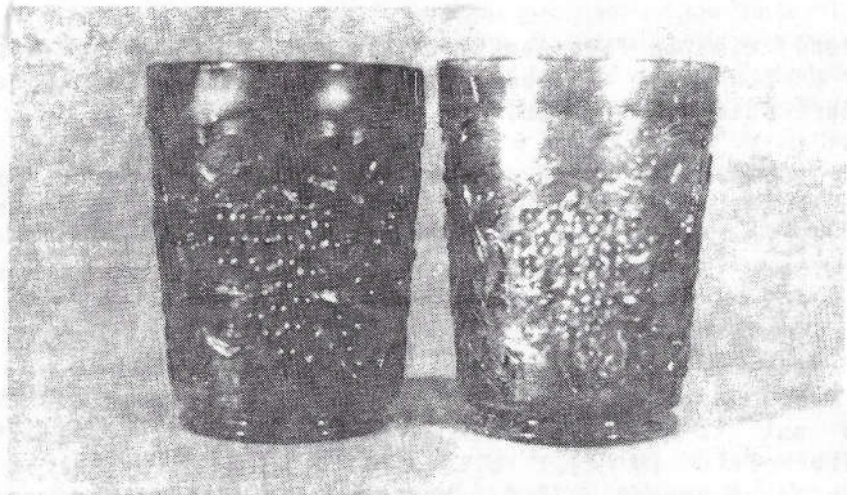
So many events on the same date as the next auction Tom announced will be in Strongville, OH on June 15 & 16. Not sure we can stretch ourselves out to it but we'll see --- two different family reunions, a folk festival at home, a 50th anniversary, and the auction. OH DEAR, WHAT TO DO?

GRACE & BYRON RINEHART
Charleston, WV

A), You sure did a super job on the convention coverage. I was very glad that you got a picture of all the award winners.

DONALD KIME

**** EDUCATIONAL TUMBLER SERIES ****
by John & Lucile Britt



IMPERIAL GRAPE IN AMBER AND PASTEL GREEN

"Imperial Grape" was certainly one of the most massively produced of all the water set patterns. Most water set, pitcher and tumbler collectors don't spend much time talking about this pattern. The reason for this is no doubt that the pieces are so easily found, especially in marigold. We like the "Imperial Grape" pattern and have always found it interesting. One of the reasons is that it was made in so many colors and with the exception of marigold, helios green and purple, the tumblers and pitchers are very hard to find. Purple tumblers and water sets are actually becoming quite scarce. The purple "Imperial Grape" water sets have always been one of our favorites and they are noted for great color and iridescence. The clusters of grapes on the purple sets look so real that you want to pick off a bunch and start eating them! Some of the beautiful and rare colors that can be found in this pattern are: amber, aqua, teal, smoke, lavender, pastel marigold and pastel green. It is only seldom that tumblers or pitchers in any of these colors are ever found and they usually have fantastic iridescence. Three of the prettiest tumblers in our collection are "Imperial Grape" examples in the colors of smoke, amber and aqua green. This aqua green tumbler is from the Russ Lytle collection of California. Richard Owens states in his tumbler book that one of the prettiest tumblers in his collection was the smokey "Imperial Grape", and I can well believe that as they have super iridescence. We just recently found an "Imperial Grape" water pitcher in smokey and any of these unusual colors are quite rare.

It is also interesting to note that "Imperial Grape" tumblers were also made in a variant - these contain ribbing on the inside. We tumbler collectors call this the "Imperial Grape Variant". We have both types of these tumblers in the smoke color as well as a number of other colors. The only difference between the two is that the "Imperial Grape Variant" has the distinctive ribbing on the inside. Both types of tumblers have a 20 point rayed star on the bottom of the base.

We should also point out that the "Imperial Grape" tumblers were reproduced. They should not cause you any problem because they do not have the 20 point rayed star in the base, but have a superimposed "IG" on a stippled base. The new tumblers that I have seen are smooth on the interior. Mosser recently produced this same pattern in a tumbler with a 20 point rayed star base, but in this case you will find a "M" (for Mosser) in a circle on the inside of the tumblers base. This one too will give you no problem as it is also well marked. Imperial made a tall ice tea tumbler in their new line in both smoke and marigold. These are a full 5" tall while the regular ones are but 4". These tall tumblers also have a stippled base with a well marked "IG". If they do exist, I have never seen any of the old "Imperial Grape" tumblers in this tall size.

IMPERIAL GRAPE WATER SET - AMBER

(Collection of Larry Keig)



In summing up -- "Imperial Grape" water sets were one of the most prolifically produced water sets in all carnival glass. The marigold set is very common, but indeed a pretty and collectable set. The helios green sets are not hard to find and not one of my favorites but must have been a good seller and popular with the housewives of the era. The purple water set is of super color and collectors who own one nearly always want to keep it in their collection. Water set pieces in the other colors mentioned are rare, desirable and fabulous examples of old carnival glass.

This is number 77 of this series on carnival glass tumblers. Next month we will cover a tumbler that was not made in the U.S.A. It is known by carnival glass collectors in this country as "Wide Panelled Thistle".

JOHN & LUCILE BRITT

=====

R A R I T I E S a n d S E L D O M S E E N

=====

by Ivan & Betty Mitchell



NuArt CHRYSANTHEMUM plate -- Imperial

The above chop plate in green is very scarce. I know of less than a half dozen in this color, but there certainly could be more out there.

This plate is 10 1/2" in diameter and will sell in the ballpark of \$1000.

We were at the Elam auction in Illinois about two years ago and saw one of these green plates cracked and laying in two pieces. Seems it had been stored in a cold basement where it had frozen, thawed and broken.

These are widely sought by collectors and are mighty hard to come by.

Yes, it is signed NuArt.

HOACGA WELCOMES NEW MEMBER RUSTI L. SHUPERT

Rusti is from oceanside, CA., is 13 years old and in the eighth grade. She has been collecting Carnival for over 3 years with money earned on her paper route. Thanks to Don Moore, we have another member, our youngest.

*** CARNIVAL CALENDAR ***

JUNE 21-23

NORTHERN CALIFORNIA CARNIVAL CLUB CONVENTION

Held at the Holiday Inn Holidome in Stockton, CA. This year, there will be a catered luncheon at Gordon & Charlotte Williams'.

JUNE 27-30

INTERNATIONAL CARNIVAL GLASS ASSOCIATION'S ANNUAL CONVENTION

Held at the Drawbridge Motor Inn, I-75 & Buttermilk Pike, Fort Mitchell, KY 41017. Thursday Auction, Friday banquet and guest speaker Richard Kojis on Ice Blue Carnival.

JULY 26-28

AMERICAN CARNIVAL GLASS ASSOCIATION'S ANNUAL CONVENTION

To be held at the Sheraton Canandaigua Inn, Canandaigua, NY. For info contact: Emma Tilton, Box 273, Gnadenhutten, OH 44629.

AUGUST 9-11

PACIFIC N.W. CARNIVAL GLASS ASSOCIATION'S ANNUAL CONVENTION

To be held at the Holiday Inn in Eugene, Oregon. For more information contact: Karen Engel, Convention Chairman, 35292 Oak View Drive, Brownsville, OR 97327.

SEPTEMBER 8-9

NEW ENGLAND CARNIVAL GLASS ASSOCIATION'S MINI-CONVENTION

Held at the American Motor Inn, Sturbridge, Mass. Contact: Betty Palmer, 413-536-4319 (after 7PM) or 413-536-2123 (days)

OCTOBER 6-7

CANADIAN CARNIVAL GLASS ASSOCIATION'S CONVENTION

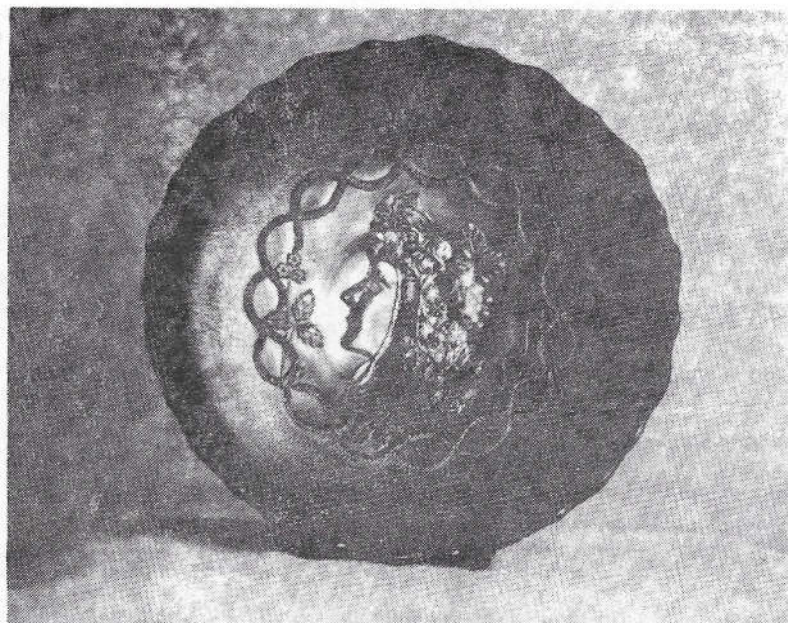
Held at the Conestoga Inn, Kitchner, Ontario. Banquet on Saturday with William Heacock as speaker. Auction date has been changed to Sunday because of a collection that was just consigned. Contact: Janet Knechtel, R.R. #1, Breslau, Ontario, Canada. Phone: 519-648-2696.

OCTOBER 19-21

AIR CAPITOL CARNIVAL GLASS CLUB CONVENTION

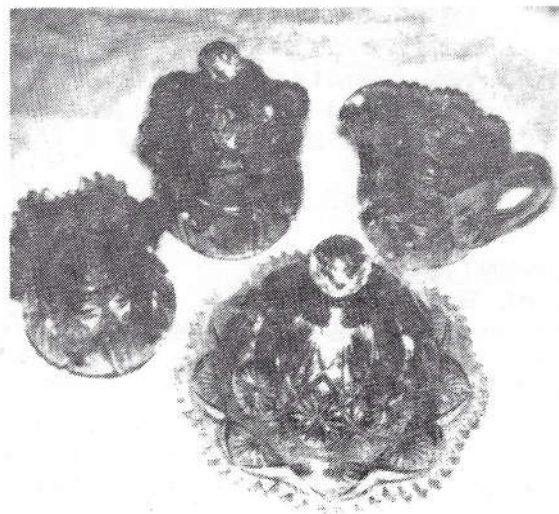
Ray Notley, banquet speaker. Airport Sheraton Inn, 5500 W. Kellogg, Wichita, KS 67209 phone: 316-943-2181.

by Al Rettke



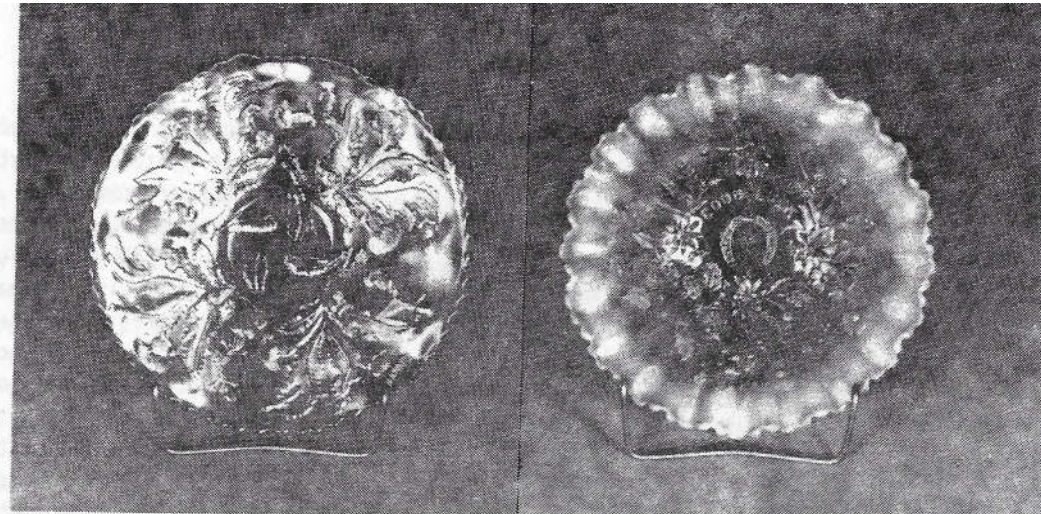
GODDESS OF HARVEST ICE CREAM SHAPED BOWL -- FIERY AMETHYST

Believe me, it is not every day you get to report on something like this. To my knowledge, this is the only Goddess bowl in this shape. Bill Heacock did report the confirmation of a Amethyst plate, and we keep hearing of a plate in Marigold but can not positively confirm the latter. The last Goddess Of Harvest bowl sold was at the HOACGA convention auction in April. This was an Amethyst 6-ruffled one and it brought \$3750. Experts I have contacted put the number of bowls known in this pattern at 6-8 and plates at 1 or 2. The above bowl was found by an Australian collector and remains in her collection.



Ray Notley recently wrote me about the surfacing of three more pieces of FENTONS PERSIAN BLUE; 2 LOTUS & GRAPE BOWLS AND 1 VINTAGE. Also reported were two more pieces that a picker/packer/importer is shipping back to the US, a RED VINTAGE BOWL and yet another MARIGOLD/MILK GLASS PEACOCK & URN! This certainly gives even more weight to his comments that there will be a large number of "rarities" surfacing in the UK during the next year.

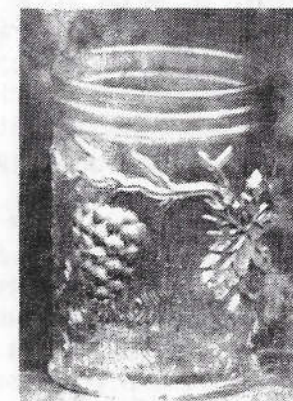
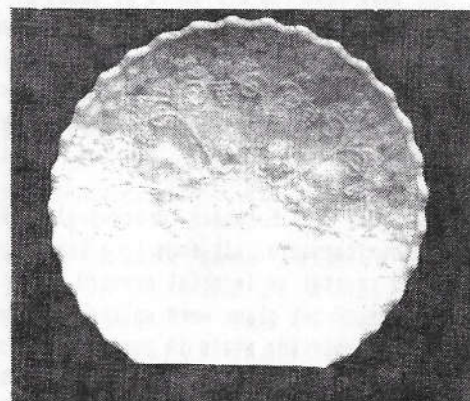
JANET KNECHTEL sent the picture at left of her MILLERSBURG COUNTRY KITCHEN TABLESET IN MARIGOLD. This sure is a super set and VERY hard to find, the spooner seems quite drawn in and almost a cuspidor, can any of you Millersburg experts help on this?



CARNIVAL THISTLE PLATE, AMETHYST

GOOD LUCK BOWL, AQUA OPALESCENT

I am very happy to report that Wendy and I have had the best month finding Carnival ever and above are the two top pieces. Thistle plates are known in green and amethyst, amethyst being the hardest to find. From information gathered, the number known of these 9" plates is between 5-7. The piecrust edge AQUA OPAL GOOD LUCK now has a home in our "good" cabinet. Also found in the last month were a ICE GREEN PEACOCK & URN MASTER, piecrust edge ICE BLUE STIPPLED GRAPE & CABLE 9" BOWL, LIME GREEN OPAL PEACOCK & GRAPE COLLAR BASE BOWL, MARIGOLD DRAGON & BERRY I.C. SHAPED BOWL, a pair of ICE GREEN PEACOCK @ FOUNTAIN PUNCH CUPS, and a half dozen other things. Best of all, they were found LOCALLY in five different places!! A month ago we would have said no way would there be this kind of stuff for sale in Minnesota & Iowa. (now there isn't!)



From LARRY YUNG comes the following: The bowl above is a difficult Northwood pattern, GRAPE FRIEZE. It is on a CREAM COLORED CUSTARD GLASS, sorry the photo can't show the excellent iridescence. This bowl measures 10 1/2" and is 3" high on three feet. It has the full Northwood N in a circle. The common VINEYARD TUMBLER on the right has the very uncommon painted decoration (BLUE GRAPES, GREEN LEAVES & VINE) on a pale Gingerale colored glass.

DON MOORE reports finding a MARIGOLD DIAMOND & RIB JARDINIERE, a PURPLE FLUTE PITCHER and a large size WHITE GRAPE & CABLE FRUIT BOWL. This fruit bowl is one of a very few in this color and size.

CARNIVAL GLASS AS AN EXPORT (continued)

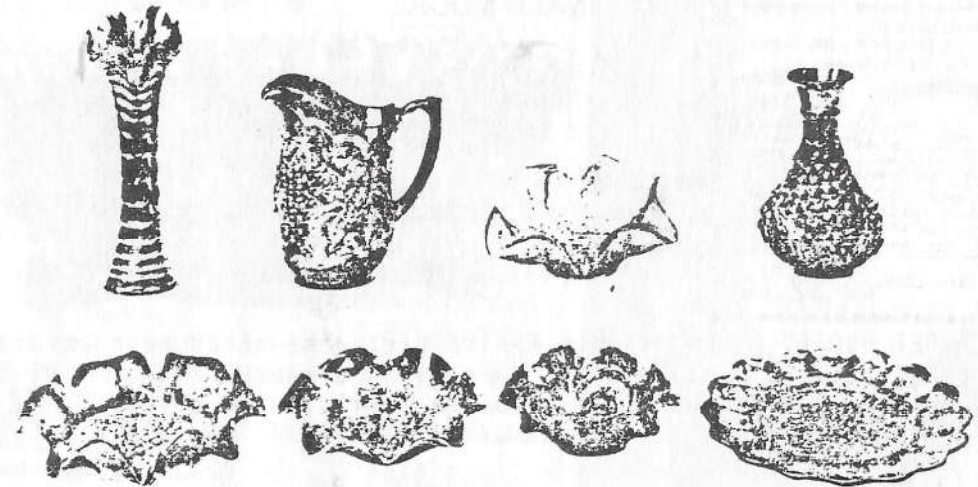
by Ray Notley

Fenton carnival glass arrived in England during 1908 and was a great success as it was included in the Christmas time sales boom. It was described as "a beautiful gift item" and was "quite unlike anything that has ever been seen before". And indeed it WAS, as far as the general public were concerned. The glass trade knew very nicely what iridescent ART GLASS looked like and were quite astonished to see Tiffany effects on glass that was being offered at such reasonable prices. Tiffany himself was not too happy, either with the pressed Art Glass, or the imported glass from Bohemia that was threatening his market. He placed his only advert in the UK trade press at this time threatening dire consequences for anyone offering glass bearing the name of Tiffany in any form at all. The general buyer of glass was not to know of such squabbling, or indeed, even to know what Tiffany glass looked like. Most would have never heard of Tiffany and probably all would have had a good laugh at someone called Louis Comfort!! The average working man who paid, in 1908, the equivalent of an hours wage for a Fenton bowl, was buying Art Glass. The actual price looks ludicrous in retrospect but in the UK, at least, that was the retail price of say a Dragon & Lotus bowl. It was a considered purchase. It was a gift item. It was glass being sold at much higher prices than in its country of origin.

Quite detailed and well written descriptions exist of early Fenton glass but they are not pictured in the trade press until the mid-1920's!! Some flyers issued by both the importers of Fenton and Northwood have recently surfaced and are both interesting and very revealing. Of immediate interest however, is the glass made by Imperial (which in my humble opinion, is severely underrated). It is beautiful glass which only lacks high prices but this is to its advantage as it is more readily available to those who use their own eyes to judge the value of the glass. The 1911 advert shown here pictures the representative contents of the first 100 barrels of Imperial that arrived in the UK. They were specially ordered to suit the needs and demands of the UK market and the onward shipping to the Empire. The importers, Markt & Co., were an Anglo-American company of German Jewish origin and they imported all sorts of goods of US origin. They first made a great deal of money during the bicycling craze of the late 19th century and they imported Columbia bicycles from Hartford, Conn. Spare parts and some bicycles continued to arrive up to 1913 but from 1911, spotting a trend, they branched out into glass for the first time and signed an exclusive UK & British Empire distribution contract with Imperial through their New York representatives. In fact, the first samples (in 1910) arrived in a crate of bicycle bells and hubs.

The glass made by Imperial was to be very influential in European pressed glass factories and the attribution of much European Carnival to Imperial is understandable. It does look like it and this was the intention of the European factories. The NUCUT pressed crystal of Imperial created quite a stir in Europe in 1913. The whirling hobstars and elaborate imitations of cut glass were unlike anything before seen on pressed glass. Copies of these cut patterns and the whirling stars in particular were to dominate the catalogues of both the Scandinavian and the Czech factories involved in pressing glass. These factories all copied other glass patterns that tickled their fancy. I have mentioned it before, but think it has been overlooked, the fact that much Sowerby glass was copied in Europe. As Sowerby was also copying Imperial patterns, the whole business is a mess. I must stress that much of the Imperial glass copied in Europe WAS NOT iridised. Neither were the patterns that were filched from Sowerby. The surprise of finding Imperial designs in European catalogues must be tempered with their use of other designs stolen from other factories. One naturally concentrates on Carnival patterns but not to the exclusion of all other glass designs.

IRIDISCENT WARE.



A MOST ATTRACTIVE DISPLAY

Can be made by a nominal outlay.

MARKT & Co. (London) Ltd., 6, CITY ROAD, LONDON, E.C.

The advert shows; a RIPPLE vase, a pitcher in IMPERIAL GRAPE, an ACANTHUS bowl, an IMPERIAL GRAPE blown vase (water carafe), a HEAVY GRAPE crimped bowl, a Pansy bowl, a SCROLL EMBOSSED bowl with FILE exterior, and a HEAVY GRAPE chop plate. The pitcher was not offered with the tumblers but purely as a decorative item. The IMPERIAL GRAPE vase was sold and displayed as a flower vase and I think it really ought to be listed as a vase and no longer as a water bottle. The chop plates were sold in pairs as "decorative plaques" and the RIPPLE vases were also sold in twos.



NUCUT

**THE NEW PROCESS
CRYSTAL—CUT GLASS
EFFECTS AT POPULAR PRICES.**

No. 511. FOOTED SUGAR. 1 1/2 lbs net No. 466. OVAL PICKLE TRAY. 8 in. 1/2 lbs net.

MARKT & CO. (London), Ltd.,
98-100 Clerkenwell Road, London, E.C.

Send for Illustrated Price List. From Loose Stock in London.

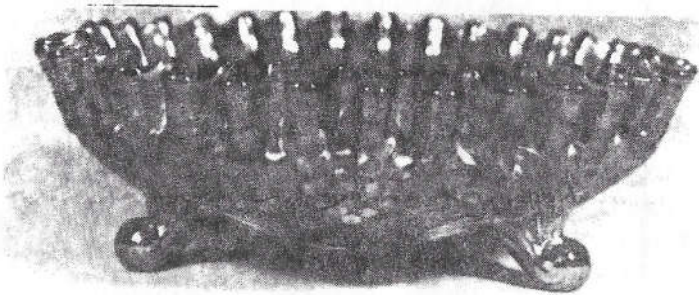
The source of Imperial's NUCUT designs were the wheel-cut glass of the Brilliant period of American fine glass. The brilliant evocation of this cut glass by Imperial was outstanding. It was very successful and much envied and much copied. The thrill of the early carnival glass from the USA is still with us. This "art glass for all" was the moving force behind the Ohio river valley factories. Imitation is the sincerest form of flattery. It is also very confusing, but with patience it will all be sorted out.

Carnival Cameos

BY DONALD MOORE



C1125. Footed -
3 1/4 x 3 1/4, cupped
grape cluster and
leaf embossed.
rich iridescent
design. 1 doz. 1 doz.
per doz. Doz. 95c



**GRAPE EMBOSSED
IRIDESCENT FERN DISH.**
Easily 50c value.

10570
- 8 1/4 in.
deep cup-
ped shape
& rustic
feet, grape
and leaf,
wreath
embossed,
allowing
for iridescent
finish, re-
movable
perforated glass lining,
doz. in pkg. Doz. **\$2.10**

VINTAGE THREE FOOTED BOWL - This Fenton piece has often been confused with Northwoods' Grape & Cable true fernery. Consequently we have usually referred to it as a nut bowl. The ad in the upper left is from a 1911 Butler Bros. catalog. It is shown with a liner and certainly establishes that it was designed & sold as a "fern dish". The clipping on the right is from the 1913 issue of this same catalog. The price is drastically reduced & it would appear it is being offered without the liner. It is still referred to, however, as a "fern dish". Since the sides are curved & not straight it is not a true fernery, as we know them, and should perhaps be called a "ferner" to avoid confusion.

The photo at the bottom shows a rare amethyst whimsey that was shaped from the same piece. It is a rather dramatic example of the alternatives available to a glass worker with imagination. This is the only one I have seen. I have, however, heard of this same piece being flattened into a footed plate.

TAMPA BAY CARNIVAL GLASS CLUB NEWS

The TRC6C met May 20 at the home of Shirley and Maurice Conyers. The luncheon buffet, as prepared by the good ladies of the club, was enjoyed by all. To add to the festivities of the occasion, Shirley served punch from her banquet size purple GRAPE & CABLE punch set. Her confidence in the steady hands of the members was justified as no cups were dropped. Following the meeting, Shirley rounded to each member their \$100 breakage deposit.

Art called the business meeting to order and called for the Secretary's and Treasurer's reports. Art announced the final plans for the fourth annual Lose Your Heart To Carnival Glass Jamboree. Due to a previous booking, the dates have been changed to FEBRUARY 7-9. The Huntley Inn in Lakeland will again be the site and there will be NO INCREASE IN ROOM RATES. They are \$36 single, \$40 double, children free. Tom Burns has promised the best carnival glass auction ever held in Florida. Lakeland is in the center of Florida's attractions including Epcot and Disney. Rates at the motel are good 5 days before and after the jamboree. Don't miss the opportunity of a bargain vacation plus carnival glass friends, PLAN NOW!!

The club is adjourned until September.

ARTHUR I. SMITH

| | | | | |
|------|---|---|--|-----|
| A | CHARLES ADAMS, 2211 SUNSET BLVD., LOS ANGELES, CA 90026 phone: 213-483-7755 or 384-5001 | M | STAR & FILE ROSEBOWL | 50 |
| M | BLACKBERRY WREATH 8" ROUND BOWL, BEAUTIFUL RADIUM | M | PANTHER 7 PIECE BERRY SET, ALL MATCH | 400 |
| VAS | 474 PUNCH BOWL, BASE & 2 CUPS, ALL | M | PONY RUFFLED BOWL | 80 |
| M | ACORN 7 1/2" RUFFLED BOWL | M | PERSIAN GARDEN 6" ICE CREAM BOWLS, HAVE 2, EACH | 80 |
| PM | SODA GOLD TUMBLERS, HAVE 2, EACH | | SEND BUSINESS SIZED SASE FOR NEW LIST OF CARNIVAL FOR SALE | |
| | GOOD LUCK STIPPLED RUFFLED BOWL | | | |
| | | | | |
| M | DARLENE YOHE, PO BOX 347, STUTTGART, AR 72160 phone: 501-673-3437 | M | PALM BEACH BUTTER DISH | 210 |
| P | AMARYLLIS COMPOTE | A | GRAPE & CABLE PUNCH CUPS, 4 MINT, 1 HAS SM CHIP, ALL 80 | 230 |
| P | GRAPE & CABLE HATPIN HOLDER | P | GRAPE & CABLE WATER PITCHER | 30 |
| P | GRAPE & CABLE BUTTER DISH | B | PEACOCK @ FOUNTAIN TUMBLERS, BASE CHIP ON EACH, BOTH 30 | 115 |
| P | GRAPE & CABLE ORANGE BOWL | M | GRAPE ARBOR TUMBLER | 25 |
| IB | GRAPE ARBOR TUMBLER | | | 17 |
| | | | | 40 |
| | | | | 20 |
| | | | | 35 |
| | | | | |
| G | PATRICIA CRAVER, BOX 8015, ALLANDALE, FL 32019 phone: 904-427-9380 | M | STAR & FILE TUMBLER | 250 |
| M | BOUTONNIERE COMPOTE, HAVE 2, EACH | M | OCTAGON TUMBLERS, HAVE 2, EACH | 10 |
| M | BOUQUET TUMBLERS, HAVE 2, EACH | B | PANELLED DANDELION TUMBLERS, HAVE 6, EACH | 45 |
| M | RAMBLER ROSE TUMBLERS, HAVE 6, EACH | M | HOBSTAR & FEATHER PUNCH CUPS, HAVE 3, EACH | |
| LM | GRAPE ARBOR PITCHER | M | OCTAGON GOBLET, HAVE 18, EACH | |
| P | MEMPHIS PUNCH CUPS, SET OF 6 FOR | | | |
| | | | | |
| | | | | |
| M | RUTH SCHINESTUHL, PO BOX 694, ABSECON, NJ 08201 phone: 609-641-1814 | M | WISHBONE EPERGNE | 135 |
| AQUA | PEACOCK @ FOUNTAIN COMPOTE | M | FLORAL & GRAPE TUMBLER | 75 |
| DARK | SAILBOATS SAUCE | | DARK TOP O THE MORNING HATPIN | 100 |
| DARK | DRAGONFLY OVAL HATPIN | | SASE FOR LIST OF CARNIVAL FOR SALE | |
| | DARK SCARAB HATPIN (SCARCE) | | | |
| | | | | |
| G | ROLAND KUHN, 1202 WEST 4TH STREET, HAYSVILLE, KS 67060 phone AFTER 5PM: 316-524-3123 | P | WISHBONE 8 1/2" FOOTED RUFFLED BOWL | 135 |
| M | WISHBONE 8" FOOTED RUFFLED DEEP BOWL | M | NORTHWOOD CHERRY TUMBLER, RIM DAMAGE | 75 |
| P | KITTENS BOWL | M | BUTTERFLY & BERRY BUTTER DISH | 100 |
| M | DIAMOND/DIAMOND BAND TUMBLER | | | |
| | LEAF TIERS BUTTER DISH | | | |

VALMER CROSS SR., JOHNSON HOLLOW ROAD, PRATTSVILLE, NY 12468 phone: 607-588-6698

| | | | | | |
|---|----------------------------|-------|---|------------------------------------|----|
| M | VINTAGE BANDED MUG | 30 | M | LATTICE & GRAPE TUMBLER | 25 |
| M | IRIS & HERRINGBONE TUMBLER | 12.50 | M | FLORAL & GRAPE TUMBLER, CHIP | 12 |
| M | WIDE PANEL 8" PLATE | 25 | M | BLOSSOM & SPEARS SAUCE | 10 |
| M | LUSTRE & CLEAR CELERY | 25 | M | LOUISA SALT & PEPPER, LINE IN CAPS | 20 |
| G | RAYS 5" BOWL, N | 15 | | | |

GILBERT (BUZ) CARTER, 813 HOYT AVENUE, EVERETT, MA 98201 phone: 206-252-8389 OR 206-659-3244

| | | | | | |
|---|---|-----|-----|---|-----|
| R | DRAGON & LOTUS 8 3/4" ICE CREAM SHAPE BOWL | 595 | 6 | MLSB6 HANGING CHERRIES PITCHER, 2 PINHEADS, SUPER | 650 |
| A | WISHBONE & SPADES CHOP PLATE, VERY PRETTY | 650 | 8 | PEACOCKS 9" STIPPLED PLATE, GREAT COLOR | 275 |
| A | MLSB6 PEACOCK (NO BEE) 10" FLUTED BOWL, GOOD RADIUM | 295 | MNG | SMOOTH PANELS VASE | 75 |
| B | PEACOCK & URN PLATE, NICE | 225 | 16 | BUSHEL BASKET, ROUND, RIM FLAKE | 95 |
| M | PEACOCK & URN PLATE, GOOD MARI GOLD | 175 | M | BUSHEL BASKET, EIGHT SIDED, N | 140 |

JUDITH MILLER, 25-4 WESTWOOD 55 MILL PLAIN ROAD, DANBURY, CT 06811

| | | | | | |
|---|--|----|---|---|----|
| B | WINDFLOWER BOWL, FLAT | 37 | P | LUSTRE ROSE SPOONER | 25 |
| M | STAR & FILE GIANT COMPOTE | 35 | 6 | PANSY SPRAY BOWL, MFG ROUGH SPOT ON EDGE | 20 |
| B | STIPPLED RAYS 5" SAUCE, SCALE EXTERIOR | 25 | M | FOOTED SHELL, LARGE SIZE, NO HARM FLAKE UNDERSIDE | 18 |
| P | GRAPE & CABLE SHERBERT, WITH THUMBPRINTS | 38 | M | BLACKBERRY SPRAY WHIMSEY, 1 SIDE DOWN, RUFFLED EDGE | 35 |
| M | ORANGE TREE ICE CREAM, CLEAR STEM | 15 | | | |

MARY WELCH, 213 ALEXANDER, SCOTIA, NY 12302 phone: 518-393-7748

| | | | | | |
|---|--|----|---|---|----|
| M | BLACKBERRY BLOCK TUMBLERS, HAVE 4, EACH | 35 | M | BLACKBERRY BLOCK TUMBLER, FLAKE ON OUTER RIM | 10 |
| M | GRAPE & CABLE TUMBLERS, N, HAVE 6, EACH | 20 | M | STORK & RUSHES TUMBLERS, HAVE 4, EACH | 15 |
| M | RASPBERRY TUMBLERS, HAVE 4, EACH | 20 | P | SINGING BIRDS TUMBLER | 40 |
| A | MAPLE LEAF FOOTED BERRY DISHES, HAVE 4, EACH | 23 | | SEND 2 STAMPS FOR LONG LIST OF 350 ITEMS FOR SALE | |

DENNIS KECK, 126 CHERRY, PUNKSUTANNEY, PA 15767 phone: 814-938-7426

| | | | | | |
|----|---|-----|-----|---|-----|
| IG | EMBROIDERED MUMS PLATE | 775 | R-A | SAILBOATS SAUCE, TINY FLAKE OFF BACK, NICE COLOR | 225 |
| M | BOUQUET PITCHER AND TUMBLER, BOTH A SUPER MARI GOLD | 235 | B | VINTAGE 7" PLATE | 165 |
| G | FRUITS & FLOWERS 7 1/2" PLATE | 125 | M | PERSIAN GARDEN 7" PLATE | 145 |
| P | COINSPOT 9" PLATE | 35 | P | TEN MUMS 10" RUFFLED BOWL, BEAUTIFUL GOLD IRID. | 110 |
| P | HORSES HEADS RUFFLED BOWL, COLLAR BASE | 125 | P | WISHBONE FLAT FOOTED 9" PLATE, FLAT FLAKE 1 POINT | 90 |

GEORGE LOESCHER, 2420 PARK AVENUE, BELLOIT, WI 53511 phone: 608-362-3104

| | | | | | |
|----|--|-----|----|---------------------------------------|-----|
| IB | PEACOCKS ON FENCE PLATE | 675 | B | PEACOCKS ON FENCE PLATE, EXTRA NICE | 320 |
| IB | GRAPE & CABLE PIECRUST EDGE 9" BOWL | 600 | M | PEACOCKS ON FENCE PLATE, EXTRA NICE | 245 |
| IB | GRAPE & CABLE 7 1/2" RUFFLED BOWL, RARE SIZE | 500 | B | HOLLY PLATE | 130 |
| P | POPPY SHOW VASE, SUPER IRIDESCENCE | 950 | B | HEART & VINE PLATE, SUPER IRIDESCENCE | 275 |
| A | THREE FRUITS RUFFLED COLLAR BASE BOWL | 45 | PH | GRAPE ARBOR TUMBLER | 18 |

JOHN MIKKONEN, RR 1 - BOX 474F, SHAKOPEE, MN 55379 phone: 612-445-6098

| | | | | | |
|---|--|-----|---|--|-----|
| M | POPPY SHOW BOWL, GOOD COLOR, SLIGHT ROUGHNESS | 100 | M | ORANGE TREE SHAVING MUG, GOOD COLOR | 40 |
| M | TWINS FRUIT BOWL BASE | 25 | M | CARNIVAL HOLLY BOWL, GOOD COLOR | 55 |
| G | CARNIVAL HOLLY BOWL, GOOD COLOR, RC & RUFFLED EDGE | 90 | M | PEACOCK & URN ICE CREAM SHAPED FENTON BOWL | 60 |
| G | OCTAGON TUMBLER | 600 | M | INVERTED STRAWBERRY TUMBLER | 250 |
| A | STAR OF DAVID & BOWS BOWL | 65 | M | GRAPE & GOTHIC ARCHES SAUCE, HAVE 2, EACH | 15 |

WOODY FUNK, 563 HIVEVIEW DRIVE, LITITZ, PA 17543 phone: 717-665-2395

| | | | | | |
|----|-----------------------------|-----|---|-----------------------------------|-----|
| A | HILLERSBURG COURTHOUSE BOWL | 330 | M | FLEUR DE LYS FOOTED BOWL | 145 |
| A | CAPTIVE ROSE BON-BON | 35 | B | ELKS BOWL, ATLANTIC CITY | 395 |
| M | SODA GOLD 7 PIECE WATER SET | 295 | M | PEACOCK @ FOUNTAIN TUMBLER, DUGAN | 20 |
| M | ORIENTAL POPPY TUMBLER | 95 | P | ACORN BURRS TUMBLER | 50 |
| SM | SODA GOLD TUMBLER | 50 | G | GRAPE & CABLE TANKARD TUMBLER | 175 |

SHIRLEY HILL, ROUTE 8, BOX 413, REIDSVILLE, NC 27320 phone PM or weekends: 919-342-3096 SASE FOR LIST

| | | | | | |
|---|---|-----|---|---|-----|
| G | MAYAN 8" ROUND BOWL | 65 | A | PRIMROSE 9 1/2" RUFFLED BOWL, FINE CUT HEART BACK | 85 |
| G | ROSLIND 10" BOWL | 195 | G | SUNFLOWER FOOTED BOWL | 50 |
| A | MAPLE LEAF 7 PIECE BERRY SET, PEDESTAL BASE | 220 | P | WISHBONE & SPADES 6 1/2" PLATE | 125 |
| M | KITTENS FOUR SIDED BOWL | 85 | M | 474 GOBLET | 45 |
| M | FASHION WATER PITCHER | 125 | P | WINDMILL 7" ROUND BOWL, NICE | 35 |

BERNIE MAHN, 1001 ROCK ROAD, DESOTO, MO 63020 phone: 314-586-6226

| | | | | | |
|---|---|-----|----|-------------------------------------|-----|
| A | GRAPEVINE LATTICE TUMBLERS, HAVE 2, EACH | 75 | AO | THIN RIB VASE | 135 |
| A | MLSB6 HOLLY SWIRL 6" DEEP SAUCE, C.R.E., RARE | 175 | M | SAILBOATS WINE | 30 |
| G | MLSB6 CHERRIES 7" BOWL | 175 | PH | PEACOCK & URN 8 1/2" ICE CREAM BOWL | 135 |
| G | STRAWBERRY 9" PLATE, STIPPLED | 115 | G | GREEK KEY TUMBLER | 130 |
| A | VINTAGE 6" PLATE | 85 | G | VINTAGE 6" PLATE | 110 |

EVA BACKER, 12 SHERWOOD ROAD, WEST HARTFORD, CT 06117 phone: 203-233-3761

S FASHION BREAKFAST CREAMER 50 M HOBSTAR SPOONER 45
 M VINTAGE BANDED MUG 22 M ORANGE TREE PUNCH BOWL, BASE, 1 CUP 125
 G ACORN BURRS PUNCH CUPS, HAVE 3, EACH 35 M 474 PUNCH CUPS, HAVE 4, EACH 22
 M PALM BEACH SPOONER 85 A SIX PETALS BOWL 47
 CLR SHRINER'S CHAMPAGNE, 1910 ALLIGATOR 90 A ACORN BURRS PUNCH CUPS, HAVE 2, EACH 35

DICK HATSCHER, BOX 261 WALNUT HILL ROAD, BETHEL, CT 06801 phone: 203-743-1468

M ORANGE TREE ORCHARD WATER PITCHER 185 M KITTENS BANANA SHAPED DISH 85
 P DIAMOND LACE TUMBLERS, HAVE 8, EACH 30 P SCROLL EMBOSSED FLAT PLATE 90
 P VICTORIAN BOWL, LARGE 11 1/4" SIZE 110 P HAT PINS, 3 DIFFERENT STYLES, PRICE EACH 12
 G MLS86 "SHOTGUN" PEACOCK & URN BOWL, RARE 7 1/2" 295 M BUSHEL BASKET, EIGHT SIDED 110
 PO SKI STAR HANDGRIP PLATE 8 3/4" 160. PO PETAL & FAN 10 1/2" BOWL 95

J. VOKRAL, 439 GRANDE COTE, ST. EUSTACHE, QUEBEC, J7P 1H9 CANADA ALL PRICES IN U.S. DOLLARS

M ROBIN MUG 29 M ORANGE TREE MUG 25
 M GRAPE ARBOR FOOTED BOWL 100 DM MAPLE LEAF TUMBLER, HAVE 4, EACH 25
 M 474 CUPS 19 M ACORN BURRS BOWL 68
 M ACORN BURRS SAUCES, EACH 25 M GRAPE & CABLE THUMBPRINT SPOONER 50
 M AUTO VASE 25 M GRAPE & CABLE SUGAR LID 12

BURNEY TALLEY, 1814 SLATE NW, ALBUQUERQUE, NM 87104 phone: 505-242-1261

16 GRAPE & CABLE CENTERPIECE BOWL, POINTS STRAIGHT UP 625 IS FENTON'S BASKET, 4 SIDES UP 85
 A VINTAGE 7 1/2" PLATE 87.50 M RASPBERRY 7 PIECE WATER SET 275
 M N'S PEACOCKS PLATE, STIPPLED 250 M HEAVY IRIS 6 PIECE WATER SET 550
 N FIELDFLOWER 7 PIECE WATER SET, 1 TUMBLER SM CHIP 225 B STIPPLED RAYS 7" PLATE 35
 M STIPPLED RAYS 7" PLATE 25 M PEACOCK & GRAPE FOOTED PLATE 125

CHARLES F. DODSON, 9 LINDENWOOD COURT, STERLING, VA 22170 phone: 703-430-7314

G WHIRLING LEAVES 9" BOWL 50 M STORK & RUSHES HAT SHAPE 22
 G PANSY PICKLE DISH 25 M LUSTRE FRUIT TUMBLERS (9) 50
 M FANCIFUL LOW RUFFLED BOWL, FLAKE ON ONE POINT 40 M COLONIAL CANDLESTICKS, PAIR 26
 M WINDMILL WATER PITCHER 90 A COMET RUFFLED PLATE 110
 B TWO FLOWERS FOOTED BOWL 55 LM PONY BOWL 55

TED SHEBLEY, 304A HILLCREST DRIVE, NEW CUMBERLAND, PA 17070 phone: 717-938-6417

A ISAAC BENESECH ADVERTISING PIECE 165 M BUTTERFLY & TULIP FOOTED BOWL 185
 P PEACOCK & FOUNTAIN PUNCH CUPS, SUPER COLOR, ALL 6 210 P PEACOCKS ON FENCE 9" PLATE, SUPER COLOR 275
 P SPRINGTIME BUTTERDISH, SUPER COLOR 275 A COURTHOUSE RUFFLED BOWL 425
 P PEACOCK & URN 7 PC ICE CREAM SET, N 560 AO PEACOCKS ON FENCE BOWL 560
 P DANDELION 7 PC WATER SET, N 725 M TOWN PUMP, IVY 1325

LEE BRYANT, RR #1 BOX 109, DECATUR, IN 46733 phone after 5PM: 219-639-3415

A BEAUTY BUD VASE, 8 1/2" 30 B BUTTERFLY & BERRY VASE 45
 P DIAMOND LACE 9 1/2" FOLDED BOWL, WXTERIOR 30 M PRIMROSE FOLDED BOWL, SATIN FINISH 75
 PO RAINDROPS WITH KEYHOLE DOME FOOTED CANDY EDGE BOWL 55 M GOLDEN HARVEST 6 PIECE WINE SET, WILL SEPERATE 120
 G ACORN BURRS 5" BERRY BOWLS, HAVE FOUR, 35 EACH OR 120 M GRAPE & CABLE FRUIT BOWL, POINTS FOLDED OUT 90
 VAS GRAPE & CABLE 7 1/2" FOLDED BOWL 100 B FANTAIL WITH BOB 9" FOOTED ICE CREAM SHAPED BOWL 140

ERNEST & MARGIE LANINGHAM, 415 SOUTH WESTGATE #11, MESLAGO, TX 78596 phone: 512-968-2201

P PUNCH BOWL & BASE, SMALL SIZE 325 G FLUTE TOOTHPICK 55
 A VINTAGE 7 1/2" PLATE, SUPER COLOR 120 B ENAMELED GROUND CHERRIES TUMBLERS, HAVE 6, PERFECT 150

BARBARA NELSON, RFD 4 - BOX 155, LACONTA, NH 03246 phone: 603-293-7246

M GRAPE & CABLE HATPIN HOLDER, TINY NICK UNDER 1 FOOT 115 A STRAWBERRY WREATH COMPOTE, BLUE & GOLD IRID, RADIUM 125
 PO WISHBONE & SPADES 5" BOWL, OPAL INSIDE & OUT 75 A BIRDS & CHERRIES COMPOTE, OUTSTANDING IRID 60
 PO SINGLE FLOWER 9" BOWL, CANDY RIBBON EDGE, 1UP & 1DOWN 55 AMB OPEN ROSE 8" BOWL, ROUGH SPOT ON BOTTOM OF BASE 25
 BLACK GLASS SIX PETALS BOWL, PURPLE & BLUE IRID. 55 M STRAWBERRY PIECRUST EDGE BOWL, STIPPLED, N 40

NORENE CAMPBELL, BOX 107, OCTATE, NH 87334 phone BEFORE 8PM NH TIME: 505-666-2237

16 POPPY SHOW BOWL 495 G NESTING SWAN BOWL 290
 MMG SCALES BOWL 150 M JEWELLED HEART TUMBLER 90
 P DAHLIA TABLE SET 825 TB NIPPON BOWL 185
 PO FOUR FLOWERS CHOP PLATE 425 M GRAPE & CABLE MIDDLE SIZE PUNCH SET, 8 CUPS, SCARCE 550
 PEARL PEACOCKS ON FENCE BOWL, PLEASE CALL ON THIS 795 16 BUSHEL BASKET, 8 SIDED 150

BARBARA BARKER, RT #3 - BOX 16388, SAVANNAH, MO 64485 phone: 816-662-2265

PURPLE GRAPE & CABLE BANDED DERSSER TRAY.....180

EDWARD L. HENDERSON, 1111 N. COLLEGE, STUTTGART, ARK 72160 phone: 501-673-8757

| | | | | | |
|----|----------------------------------|----|---|--|----|
| M | WINDMILL OVAL SHAPED RELISH DISH | 40 | M | ORANGE TREE PEDESTAL SAUCE DISH | 15 |
| M | CARNIVAL HOLLY SHERBET DISH | 15 | M | SWIRL RIB 10" VASE | 40 |
| P | *FENTON GRAPE* WINE CARAFE | 80 | P | BASKETWEAVE 8" BOWL, N, CHIP OFF OF SIDE OF BASE | 25 |
| LM | FASHION 8" BOWL, IMPERIAL | 20 | M | DRAGON & LOTUS 8" BOWL | 35 |
| M | FLOWER & LOOPS 9" BOWL | 25 | M | GRAPE & CABLE 6" BOWL | 30 |

DICK WETHERBEE, 847 STAFFORD ST., ROCHESTER, MA phone: 617-892-4420

| | | | | | |
|----|---|----|----|--|----|
| A | COIN DOT 9 1/2" BOWL, STIPPLED | 35 | M | JACK-IN-PULPIT 7 1/2" VASE, WESTMORELAND RIB | 32 |
| P | ACORN BURRS SUGAR & CREAMER, DAMAGED & REPAIRED | 25 | PO | RAINDROPS DOME FOOTED 9" BOWL, PRETTY | 70 |
| IG | PASTEL SWAN SALT | 27 | A | BUTTERFLIES BON-BON, FENTON | 47 |
| M | THISTLE & LOTUS 7" FLUTED DISH | 32 | PO | DUGAN'S FAN SAUCEBOAT, TINY CHIP INSIDE 1 FOOT, NH | 25 |
| P | DAISY & PLUME 6" COMPOTE | 45 | G | IMPERIAL GRAPE 8" PLATE, HELIOS | 45 |

SINGLETON & CHERYL BAILEY, PO BOX 95, LORIS, SC 29569 phone: 803-756-7495

| | | | | | |
|-----|--|-----|---|--|-----|
| MMG | SCALES BOWL | 150 | G | MLSB6 PEACOCK & URN (W. BEE) MASTER ICE CREAM BOWL | 375 |
| M | MLSB6 PEACOCK & URN BOWL, COURTHOUSE SIZE, SHOTGUN | 395 | A | MLSB6 PEACOCK & URN (W. BEE) MASTER ICE CREAM BOWL | 295 |
| A | MLSB6 PEACOCK & URN BOWL, COURTHOUSE SIZE, SHOTGUN | 350 | G | MLSB6 PEACOCK & URN BOWL, COURTHOUSE SIZE, SHOTGUN | 350 |
| G | MLSB6 PEACOCK & URN "MYSTERY" BOWL | 295 | A | MLSB6 PEACOCK & URN "MYSTERY" RUFFLED BOWL | 275 |
| A | MLSB6 PEACOCK & URN "MYSTERY" CRIMPED BOWL | 275 | A | MLSB6 PEACOCK & URN "MYSTERY" ROUND BOWL | 275 |

LLOYD WARD, PO BOX 787, EULESS, TX 76039 phone: 817-540-0081

| | | | | | |
|----|---|-----|----|---|-----|
| M | GRAPE & CABLE COVERED COOKIE JAR, CHOICE | 335 | M | MEMPHIS PUNCH CUPS, 5, EACH | 25 |
| M | MAPLE LEAF TUMBLERS, SET OF 4 | 110 | A | RAMBLER ROSE TUMBLERS, SET OF 6 | 210 |
| IB | PANEL INTERIOR PEARLIZED CARNIVAL 9" FRUIT BOWL | 325 | IB | CORNUCOPIA CANDLEHOLDER, FAIR | 235 |
| IG | THIN RIB VARIANT NORTHWOOD VASE | 95 | B | FRENCH KNOTS HATTIE | 55 |
| R | STIPPLED RAYS SMALL BOWL, CHOICE | 265 | M | PERSIAN GARDEN MASTER ICE CREAM BOWL, OUTSTANDING | 225 |

FRED HAMM, 214 THICKSON ROAD SOUTH, WHITBY, ONTARIO, CANADA, LIN 2E1 phone: 416-343-5805

| | | | | | |
|---|---|------|---|--|-----|
| A | INVERTED THISTLE WATER PITCHER, RARE | 2000 | A | INVERTED THISTLE TUMBLERS, HAVE 5, EACH | 310 |
| A | INVERTED THISTLE TUMBLER, CRACKED TOP TO BOTTOM | 40 | A | INVERTED THISTLE BUTTERDISH, NEAR CUT, BOTTOM CHIP | 800 |

Y. BEAUDRY, 438 14TH AVENUE, CITY OF TWO MOUNTAINS, QUEBEC, CANADA J7R 3W7 phone: 514-472-0830
M INVERTED STRAWBERRY LARGE OPEN COMPOTE, MINT 250

PAUL BERUBE, 11 DORIS AVENUE, TIVERTON, RI 02878 phone: 401-625-5303

| | | | | | |
|---|--|-----|---|---|-----|
| M | GRAPE & CABLE MEDIUM SIZE PUNCH BASE | 20 | B | STIPPLED RAYS SUGAR | 22 |
| G | MLSB6 DIAMOND TUMBLER | 35 | A | MLSB6 RAYS & RIBBONS 9" ICE CREAM SHAPED BOWL | 125 |
| A | MLSB6 CHERRY 7 1/2" PLATE, UNLISTED SIZE | 300 | | | |

RAY HITCHCOCK, RR #1 BOX 301, WINTERSET, IA 50273 phone: 515-462-2074

| | | | | | |
|----|---------------------------------------|-----|----|--|-----|
| R | HOLLY HAT | 245 | A | COURTHOUSE BOWL, ROUND & LETTERED | 450 |
| B | HEARTS & FLOWERS COMPOTE, SUPER COLOR | 155 | G | GRAPE & CABLE 10" BOWL, STIPPLED BIG GRAPE VERSION | 125 |
| PM | HEARTS & FLOWERS COMPOTE | 80 | AO | THIN RIB 11" VASE, N | 125 |
| M | HEARTS & FLOWERS COMPOTE | 110 | M | FASHION 14 PC PUNCH SET, 6 BRASS CUP HOLDERS INCL | 180 |

AL & WENDY RETTKE, 14226 EAST 143RD LANE, BURNSVILLE, MN phone: 612-432-7489

| | | | | | |
|---|---|------|----|--|-----|
| A | CARNIVAL THISTLE 9" PLATE, EXTREMELY RARE | 1250 | M | PEACOCKS ON FENCE PLATE, STIPPLED, REAL NICE | 205 |
| A | GRAPE & CABLE ORANGE BOWL, FANTASTIC COLOR, FLAKE | 150 | IG | PEACOCKS ON FENCE PLATE, PRETTY | 270 |

CARNIVAL GLASS WANTED -- CARNIVAL GLASS WANTED -- CARNIVAL GLASS WANTED -- CARNIVAL GLASS WANTED

Y. BEAUDRY, 438 14TH AVENUE, CITY OF TWO MOUNTAINS, QUEBEC, CANADA J7R 3W7 phone: 514-472-0830
M, B FINECUT & ROSES ROSEBOWLS
A, P FINECUT & ROSES ROSEBOWLS, FANCY INTERIOR

***** 6000 FEET ONLY *****

MAJORIE FLOYD, 918 PAMLICO DRIVE, CARY, NC 27511
M OPEN ROSE BUTTER BASE, NEED 2

AL & WENDY RETTKE, 14226 EAST 143RD LANE, BURNSVILLE, MN 55337 phone: 612-432-7489
IB WISHBONE BOWL
IB POINSETTIA BOWL
G SINGING BIRDS BUTTER BASE
A, P ACORN BURRS BUTTER TOP
ANY COLOR GRAPE & CABLE 9" PLATES WITH OUTSTANDING IRIDESCENCE
ANY COLOR WISHBONE BOWLS WITH OUTSTANDING IRIDESCENCE

RAY HITCHCOCK, RR #1 BOX 301, WINTERSET, IA 50273 phone: 515-462-2074
B, A CONCORD BOWLS WITH 3-IN-1 CANDY RIBBON EDGE
G ACORN BURRS BUTTER TOP
TEN MUNS 6-RUFFLED BOWLS IN ANY COLOR EXCEPT B, G, P

LLOYD WARD, PO BOX 787, EULESS, TX phone: 817-540-0081

IB, IG, W WISHBONE EPERGNE LILY OR COMPLETE EPERGNE
IB, IG CENTER LILY TO WIDE PANEL EPERGNE OR COMPLETE EPERGNE
G GODDESS OF ATHENA EPERGNE OR ANY PARTS
B ACORN BURRS PUNCH BOWL & BASE
B FENTONIA COVERED BUTTER DISH
W MANY FRUITS PUNCH BOWL BASE
G, W MEMPHIS PUNCH BOWLS & BASES
ANY COLOR EPERGNE PARTS, LILIES AND/OR BASES

DOLORES VERSPRILLE, 200 DAKE AVENUE, ROCHESTER, NY 14617 phone: 716-544-4688
G FINE CUT & ROSES ROSEBOWL, GOOD FEET
W, IG FINE CUT & ROSES ROSEBOWLS
IG WILD STRAWBERRY BOWL, N
PO HONEYCOMB ROSEBOWL
W DRAPERY ROSEBOWL, N
B DAISY & DRAPE VASE, N
ANY COLOR FORMAL HATPIN HOLDERS
ANY COLOR LARGE SIZE LITTLE STARS BOWLS

NORENE CAMPBELL, BOX 107, OCTATE, NH 87734 phone BEFORE 8PM NH TIME: 505-666-2237
P SCROLL EMBOSSED PLATE
MHG SCALE BOWL WITH MULTI COLORED IRIDESCENCE

TED SHEBLEY, 304A HILLCREST DRIVE, NEW CUMBERLAND, PA 17070 phone: 717-938-6417
ANY SINGING BIRDS TABLE SET
ANY PEACOCKS ON FENCE PIECES
ANY DRAGON & BERRY BOWLS

J. VOKRAL, 439 GRANDE COTE, ST. EUSTACHE, PQ, CANADA J7P 1H9
M HOBSTAR SUGAR LID
M PEACOCK & FOUNTAIN BUTTER BOTTOM

DICK HATSCHER, BOX 261 WALNUT HILL ROAD, BETHEL, CT 06801 phone: 203-743-1468
PD LILY FOR FISHNET EPERGNE
P LILY FOR STRAWBERRY EPERGNE
ANYTHING, ANY COLOR IN HEARTS & FLOWERS

JAMES & JUDY KEY, RT. 1 BOX 153B, MARIANNA, ARK 72360 phone: 501-295-6770
ANY ADVERTISING PLATES OR BOWLS
ANY UNUSUAL KITTENS PIECES

CHARLOTTE TWEDELL, 4908 DARTON LANE, LOUISVILLE, KY 40216 phone: 502-447-1670
B ORANGE TREE BREAKFAST CREAMER
M THISTLE & THORN SUGAR
M SPLIT DIAMOND SUGAR
G LILY FOR SMALL VINTAGE EPERGNE
B BOTTOM OF VINTAGE EPERGNE

EVA BACKER, 12 SHERWOOD ROAD, WEST HARTFORD, CT 06117 phone: 203-233-3761
IB GRAPE & CABLE POWDER JAR LID
S IMPERIAL STAR OF DAVID BOWL
A OCTAGON WINE DECANTER STOPPER

M IRIS & HERRINGBONE 5 1/2" CANDY JAR LID
MRS. L.G. MATTHEW SR., 707 E. HILLTOP DRIVE, ROGERS, ARK 72756
M IRIS & HERRINGBONE DINNER PLATES

M WIDE PAMEL EPERGNE CENTER LILY
PATRICIA CRAVE, BOX 8015, ALLANDALE, FL 32019 phone: 904-427-9380
DM N FLUTE MASTER BERRY BOWL

A SPRINGTIME SUGAR LID
GILBERT (BOZ) CARTER, 813 HOYT AVENUE, EVERETT, MA 98201 phone: 206-252-8389 OR 206-659-3244
G, A OCTAGON WINE DECANTERS AND/OR STEMMED WINES

CHARLES ADAMS, 2211 SUNSET BLVD., LOS ANGELES, CA 90026 phone: 213-483-7755 / 384-5001
M WINDMILL WATER SET
ANY COLOR CARNIVAL SHADES OR LAMPS
ANY COLOR ADVERTISING PLATES OR BOWLS

DENNIS KECK, 126 CHERRY STREET, PUNXSUTANNEY, PA 15767 phone: 814-938-7426
ANY PASTEL ITEMS, UNUSUAL TUMBLERS OR MUGS

M MARY ANN VASE
JUDITH MILLER, 25-4 WESTWOOD, 55 MILL PLAIN ROAD, DANBURY, CT 06811
M FENTON OPEN EDGE BASKET W/O BLACKBERRIES

VAS BUSHEL BASKET, M
G ACORN BURNS PUNCH TOP
WOOEY FUNK, 563 HIVEVIEW DRIVE, LITITZ, PA 17543 phone: 717-665-2395
TELU GRAPE & CABLE PUNCH BASE
IG ACORN BURNS PUNCH BASE
P PEACOCK & FOUNTAIN PUNCH TOP
B PEACOCK & FOUNTAIN PUNCH BASE

ANY NEAR CUT MUG
JACK STEWART, 99 ASTER CIRCLE, WYMOUTH, MASS 02188 phone: 617-337-1304 ANYTIME
P ORANGE TREE MUG
A SINGING BIRDS MUG
G ORANGE TREE SHAVING MUG
A SINGING BIRDS STIPPLED MUG
P SAILBOATS LARGE GOBLET
AMB ORANGE TREE SHAVING MUG
R COLONIAL SUGAR OR CREAMER
P ORANGE TREE WINE