

H.O.A.C.G.A.
BULLETIN SECRETARY
AL RETTKE
14226 East 143rd Lane
Burnsville, MN 55337

FIRST CLASS MAIL

JULY 15, 1984

S	M	T	W	T	F	S
1	2	3	4	5	6	7
8	9	10	11	12	13	14
15	16	17	18	19	20	21
22	23	24	25	26	27	28
29	30	31				

INSIDE THIS ISSUE

NEW #1 PITCHER? AND ICGA CONVENTION.....	3
TUMBLER SERIES.....	5
ROYAL SWANS.....	7
THE REAL NORTHWOOD STORY.....	8
PICTORIAL PATTERN PARADE.....	9
RARITIES & SELDOM SEEN.....	11
MILLERSBURG'S MULTI-PURPOSE MOLDS.....	12
CARNIVAL GLASS LIBRARY.....	19
CARNIVAL CALENDAR.....	21
HOACGA POLICIES.....	22
GLASS FOR SALE.....	23
GLASS WANTED.....	29



**Heart of America
Carnival Glass
Association Inc.**

Membership June to May
\$20.00 per couple or single

Published the 15th
of each month

PRESIDENT

Cooley Miller
7605 N.W. Eastside Drive
Kansas City, MO 64152
816-741-4635

VICE-PRESIDENT

Diane Treff
13646 Leavenworth Road
Kansas City, KS 66109
913-721-2917

TREASURER

Karen Engel
35292 Oak View Drive
Brownsville, OR 97327
503-466-5989

SECRETARY

Lucile Britt
3048 Tamarak Drive
Manhattan, KS 66502
913-539-1933

BULLETIN SECRETARY

Al Rettke
14226 East 143rd Lane
Burnsville, MN 55337
612-432-7489

All monetary figures quoted are in U.S. dollars.
Please make checks for dues payable to H.O.A.C.G.A.
and send them to the secretary as listed above.

**** JUNE MONTHLY MEETING ****

On June 24, 1984, the regular monthly meeting of the HOACGA was called to order by the President, Cooley Miller.

Elizabeth bolles has transferred \$19,435.99 to the Brownsville, Oregon bank for the new Treasurer, Karen Engle. The Treasurers report was read and approved.

John Britt is working with Mr. Frank Fenton on the new souvenir. This was discussed at the meeting.

A motion was made by Rosa Grisson to sell the remaining table favor mugs from this years convention for \$10 including postage. The motion was seconded by George McGrew and then passed. If you would like one (or more) of the mugs, send \$10 for each to LUCILE BRITT, 3048 Tamarak Drive, Manhattan, KS 66502.

Rosa moved that we adjourn the meeting at 3:30. It was seconded by George McGrew and passed.

VIOLA SHIKLES, Secretary Pro-Tem

HOACGA SHOWCASE FOR SALE
OAK AND GLASS, PRICE IS \$200
contact: GEORGE MCGREW, phone 913-262-8822 or write to him at
6800 Woodward, Shawnee Mission, KS 66204

JULY MEETING AND PICNIC

Put on your calander now Sunday July 22, 12:30 P.M. for a fun picnic at Weatherby lake just north of Kansas City. Bring your children and a friend. We welcome any member from out of town. On "C" point at Weatherby lake there is a large shaded shelter we have reserved for H.O.A.C.G.A. There is always a breeze and the picnic will be rain or shine. H.O.A.C.G.A. will furnish the meat and drink. Members are requested to bring utensils, paper plates and a covered dish. I would like to especially see all members from the Kansas City area there.

Cooley Miller, President

The I. C. G. A. CONVENTION
by Al Rettke

NEW NUMBER 1 WATER PITCHER????

By far, the most exciting discovery in many years has to be the water pitcher shown at right; a LIME GREEN OPALESCENT FOOTED ORANGE TREE VARIET. As the photo shows, it has lots of opal, the rim is a heavy white which extends almost all the way down the handle and even the tips of the feet are white. It has great color and iridescence and it is as mint as any old piece of Carnival. The lucky owner is BOB STRASBURGER of Franklin, Ohio and it came from the surrounding area through a dealer who called Bob after not connecting with another collector. What do you think being home that day was worth??

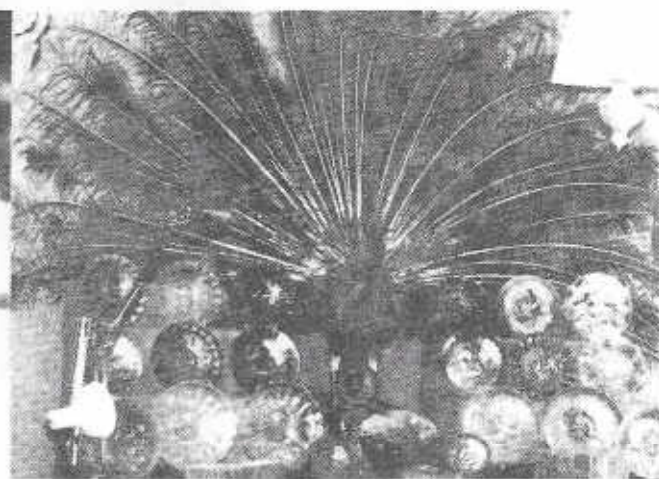


This pitcher was unveiled from a brown paper bag at the start of the Thursday night auction. Talk about everyone suddenly waking up! Someone said that John Britt, seated in the first row, was heard to say very softly something like "Where are the tumblers, where are the tumblers??".

Another one of a kind water pitcher seen there was the WHITE BUTTERFLY & BERRY belonging to GRACE & BYRON RINEHART. Their display included many rarities along the Butterfly theme including three ribbed back Butterfly bon-bons (one in Ice Blue), several B&B hatpin holders and the little footed B&B SPITTOON shown in the lower right. A Super Display!!!



Another of the highlights of the convention was the informative and well illustrated talk on Ice Blue Carnival given by RICK KOJIS. Jackie, his wife, couldn't make it to the convention but she did write everything down for him.



The theme of the 1984 ICGA convention was punch bowls and the display room was a real sight!! The top punch bowls on display were the two known AQUA OPAL PEACOCK AT THE FOUNTAIN SETS!! The one shown above belongs to TOM BURNS and was found in Illinois last year. Harold Ludeman also brought his and it really was something to see them both side by side. There were over 60 punch sets in over 35 patterns making this a impressive sight indeed. The only duplicates were the A.O. sets mentioned above.

There were so many great displays, it was hard to pick a winner but the majority of members voting picked the one above for first place. BILL & JENNIE TAYLOR's "Mr. Peacock & His Friends". As shown, they had a real male peacock stuffed and on display with peacock pattern pieces. They also won a first place at the Lincoln Land convention with this same innovative display.

I.C.G.A. AUCTION PRICES

TUMBLERS: M-PEACH 2100, 1B-WISTERIA 1800, 1B-WISTERIA 400, W-WISTERIA 300, A-MULTI-FRUITS & FLOWERS 1000, A-BAY NINETIES 500, G-MORNING GLORY 1000, A-PERFECTION 375, A-MLSBB CHERRY 300, M-MLSBB-CHERRY 300, W-PEACOCK @ FOUNTAIN 150, G-PEACOCK @ FOUNTAIN 250, B-TIGER LILY 100, AQUA-TIGER LILY 210, B-800 & HOME 175, M-CUT COSMOS 300, 1B-DANDELION 150, M-EGYPTIAN QUEEN 325, P-CONE & TIE 725, M-LILY OF VALLEY 440, M-OKLAHOMA 270, 1B-RASPBERRY 250, W-PALM BEACH 130, M-PALM BEACH 210, W-COSMOS & CANE 160.

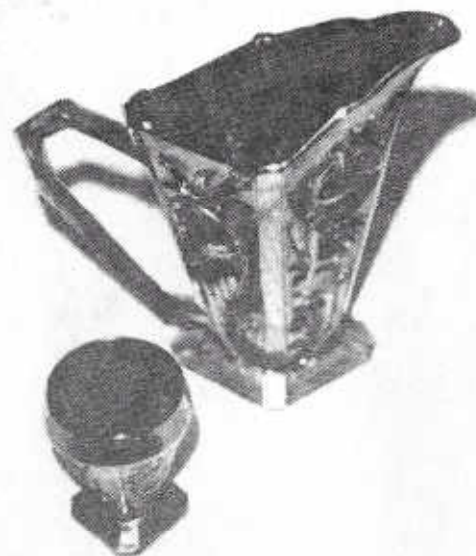
OTHER ITEMS: 1B-GRAPE & CABLE FERNERY 1250, AD-ROSE SHOW BOWL 425, PEARL-LACEY DENDROP GOBLET 225, 1B-FRUITS & FLOWERS 7" BOWL 300, AO-8000 LUCK BOWL 775, AO-TREE TRUNK STD. VASE 225, M-B & C CRACKER JAR 195, W-PEACOCKS PLATE 275, 1B-PEACOCK & URN IC BOWL 600, M-PEACOCK & URN IC BOWL VERY FLAT, SUPER COLOR 450, AO-FRUITS & FLOWERS BON-BONS 475-pastel and 275-butterscotch, P-CORN VASE 425, 1B-CORN VASE 325, M-CORN VASE 300, LAV-BUSHEL BASKET 250, B-IRIS COMPOTE 170, PO-FOUR FLOWERS 10" IC SHAPED BOWL 150

By John & Lucile Britt



WIDE PANELLED THISTLE - UNIQUE, RARE AND PRETTY

The "Wide Panelled Thistle" tumbler is one of the more recently discovered and researched tumblers. It is not listed by any of the early carnival glass researchers such as Hartung, Presznick and Hand. Neither is it mentioned or shown in Richard Owens popular carnival glass tumbler book. From old catalog material found by Mr. Ray Notley of Suffolk, England, we have learned that this pattern was made by Riihimaa Lasi Oy (Riihimaki of Finland). It is simply listed as pattern #5066 in that old catalog. The now very renowned "Western Thistle" tumbler is also known to have been made by that company. The "Western Thistle" tumbler is also known to have been made by that company. The "Western Thistle" tumbler, as some of you probably remember, was the first pattern that we covered in our carnival glass tumbler series. (H.O.A.C.G.A. bulletin, December 1977). The "Drapery Variet" pattern, which is listed by Hartung and was for many years thought to be an English pattern by many collectors, was also made by Riihimaki of Finland. The extremely rare "Tiger Lily Variet" (only one has been reported) is a Riihimaki copy of Imperial's "Tiger Lily" pattern and was made in Finland.



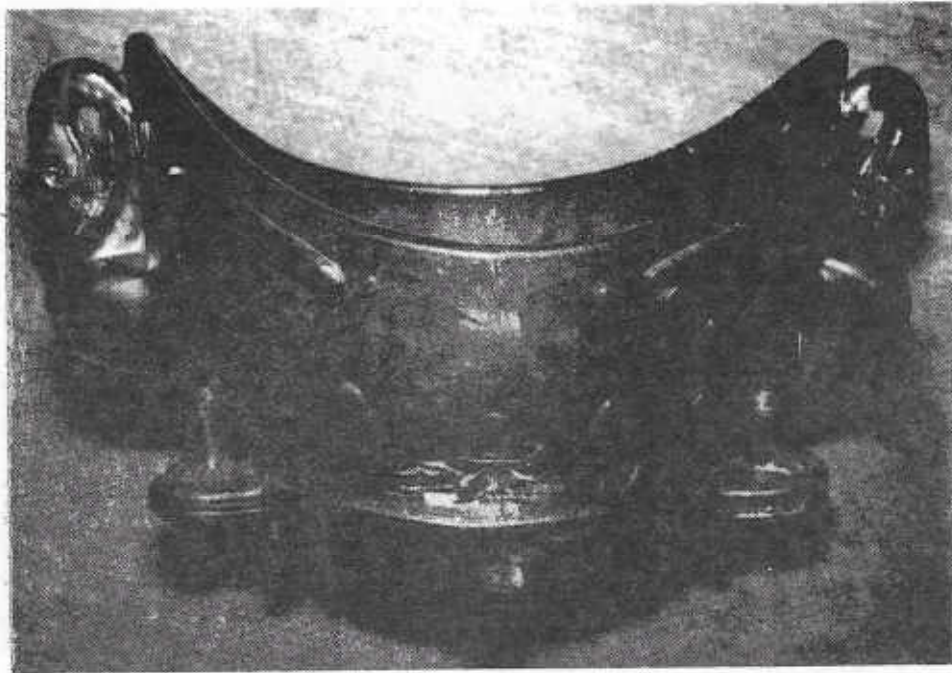
The first "Wide Panelled Thistle" tumblers that were reported in this country were discovered by Paul Jankauer of Northbrook, Illinois. We showed a picture of the tumblers and water pitcher in the H.O.A.C.G.A. bulletin at that time. These pieces actually had everyone puzzled then, including this writer, as no one reportedly had ever seen or heard of the pattern. The name "Wide Panelled Thistle" was adopted by carnival glass collectors then and it has been widely known by that name ever since. We should be very careful to use the word "Wide" in front of the words Panelled Thistle in the name, however, since there is a Higbee pattern called "Panelled Thistle" that is quite well known in old pressed glass. We know of only three water pitchers and about a dozen tumblers in the rare "Wide Panelled Thistle" pattern. The only color that has been reported, to the best of my knowledge, is a rather light cobalt blue. It is quite possible that this pattern might show up in marigold some time, however, since this Finish Glass Company did make carnival glass in that color.

"Wide Panelled Thistle" water glasses are a little taller than are most of our carnival glass tumblers. They are just a shade under 4 3/4 inches tall. Due to the cone shape, however, they do not hold any more liquid than does a standard sized tumbler such as Northwood's "Greek Key". This cone or funnel shape is rather unique in carnival glass tumblers. It sets on a square pedestal base. The water pitcher is also made in this very unusual shape and it too sets on a matching square shaped base.

We consider the "Wide Panelled Thistle" as a very unusual tumbler. The iridescence has been very good on the few pieces that we have seen. It would make a very interesting and pretty addition to any carnival glass collection.

This Finish made tumbler marks our 78th edition in this educational series. Next month we will cover an old McKee Glass Company pattern tumbler that is known as "Heart Band".

SOWERBY CARNIVAL GLASS
by Ray Notley



ROYAL SWANS, Sowerby Pattern #1328

The series of articles I started in 1982 concerning Carnival made at the Ellison Glassworks of Sowerby now resumes. I keep getting diverted but hope that this month's item will interest you as much as it does me.

The above photo is actual size so you can gather that this is not a large showy item, but rather a small jewel-like object. This is one of the masterpieces of Carnival that has remained hidden away quietly awaiting its place in the sun.

In 1882 Sowerby Limited placed together in one trade catalogue all their little novelty items. Some were much older than the date of the catalogue which contains hundreds of interesting items. The original LEA pickle dish mould is in this as is the pattern #1328 which is what is shown here. The catalogue page is headed Vases, spills, baskets, etc. So this piece was originally sold as a basket to hold flowers as was fashionable during that period. The actual mould is much much older than 1882 and probably dates from the 1870's. If for no other reason then, this can claim to be the piece of carnival made from the oldest mould. And it is a remarkable mould, the necks and legs of the swans are open and there are four very delicate supports on the base. The design itself was made up of elements that are very familiar to carnival collectors, swans and rushes. When made in the last quarter of the nineteenth century, these swan items were available in imitation cream porcelain ware and in the marvelous delicate opalescent crystal known as blanc-de-lait which does look remarkably like milk poured into water. These are some of the rarest and most expensive items that collectors of early Sowerby search for. The existence of this marigold example was a complete surprise. It is in no catalogue after 1892 but this catalogue did have a long life. Many of the designs were pirated by American glass firms and there is some fascinating research to be done here. The fact that Sowerby was later to steal some American designs is understandable.

IRIDESCENT TUMBLER



C1132—9 oz. ht. 4 in., golden iridescent, embossed swan design, beaded bands. 1 doz. box. Doz. 54c

Curiously enough, early adverts for Dugan's STORK & RUSHES describes the bird on the tumbler as a Swan!! Dugan, like his cousin Harry Northwood, was English and there is no doubt whatsoever that each possessed copies of the catalogues of the many English pressed glass firms. Peacocks also are featured on Sowerby glass of this period in both feather and complete form. They also made engraved glass with Stags.

So this small novelty is a key item in the documentation of Carnival Glass. Here is the essence of Victorian style and taste that was to go on into this century in so much of the glass that we love. This is a true rarity and is also very desirable. There is nothing else quite like it in the whole of Carnival and even its exact shape defies precise categorisation. No doubt there are more examples than this one, but so far at least, this is the only one known. Please write in if you too own one.

(Copyright 1984 by R.E. Notley)

HARRY NORTHWOOD AND HIS FATHER--A brief historical note

Harry Northwood was born in 1860 and was the eldest son of John Northwood who is one of the most distinguished glassmakers the world has ever known. Harry was fully trained in all aspects of glassmaking and design before he left for the USA in 1881. Harry was in London briefly at the turn of the century as a representative of the National Glass Combine. His father died in 1902 and Harry was executor of his will. For a number of years now, a quite remarkable story has been in print; it has been copied, recopied and repeated so often that the truth is beginning to look like a lie. The story is that Harry sent some Fenton glass to his father so that he, as a famed glassmaker, could tell him how to repeat the iridescence that was making Fenton a lot of money. This was in 1908 when Fenton scored their remarkable commercial success with "Carnival". As Harry's father had been at rest since 1902 it is also quite remarkable that this first apparent contact with a departed soul has not been remarked upon elsewhere.

Seriously though, the date of the death of John Northwood is not in any reference book and there can be an excuse for repeating this incorrect tale. As to the actual iridising process, well anyone who has seen the Poor Man's Tiffany Show over here and has seen the Bohemian and English iridescent glass of the 1880's side by side with the later Carnival would be in no doubt as to the origins of this process. Harry did not need anyone to analyse Fenton glass for him, the technology was known. All Harry did was start making it when he saw that it was more than a passing novelty. Has any type of decorated glass had a longer run than Carnival? Formulae for making iridescent glass were featured in Glass Trade magazines from the turn of the century. It is a surface application and in no way penetrates the glass to become part of it. For me there are two glass factories that fascinate me above all others, they are Fenton and Sowerby. I also love Northwood but from the point of view of future historians, the variety and quality of glass that has poured forth from the Fenton works is quite unsurpassed in the USA. I hope I am being fair to both my fellow countrymen and to the Fenton factory!!

RAY NOTLEY

PICTORIAL PATTERN PARADE

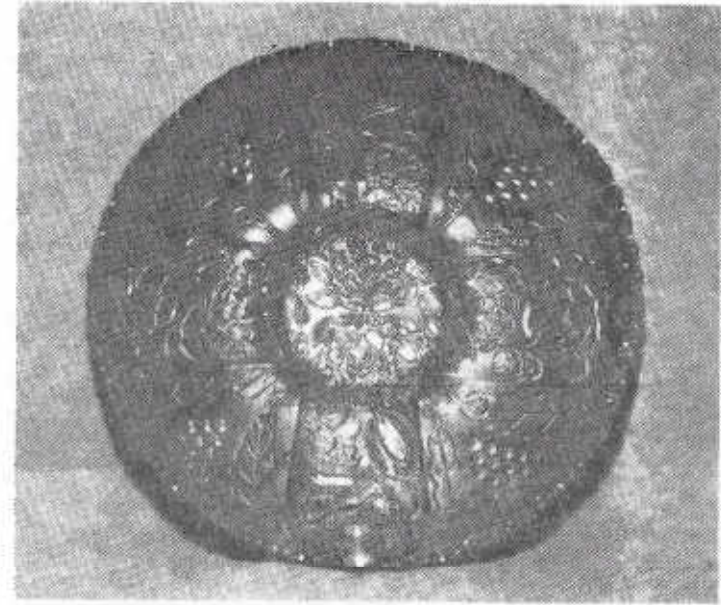
By John & Lucile Britt



LOTUS & GRAPE WITHOUT THE GRAPES

This unusual bowl could probably be more correctly called the "Lotus" bowl or "Absentee Grape & Lotus" bowl because it has no grapes. This is the only one of these that we have ever seen. An "Absentee Dragon & Berry" plate, which is very similar to this bowl, was sold at an auction in Lawrence, Kansas in January of 1983. It contained the berries but was missing the dragons. These pieces are very unusual and extremely rare. Mrs. Fern Jackson of Orange Virginia had this bowl on display at one of the conventions.

Shown on the next page is the regular "Lotus & Grape" pattern bowl which contains both the lotus and the grapes. It is in the ice cream shape instead of the ruffled style shown on the first bowl. This bowl is also unusual in that it is in the rare Persian Blue color. "Lotus & Grape" is considered to have been made by Fenton. It is a very popular pattern. Plates in this pattern are quite hard to find and are very collectible and desirable. "Lotus & Grape" was also made in bon bons. While they are pretty in any color, the red one is super rare and most valuable.



LOTUS & GRAPE BOWL WITH THE GRAPES

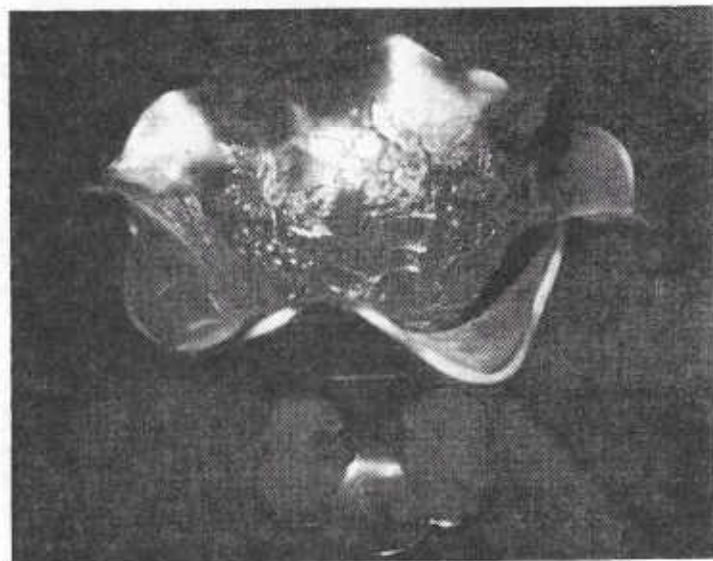


FIFTH KNOWN FROLICKING BEAR HAS BEEN CAPTURED

The fifth reported "Frolicking Bear" tumbler was recently found by Bob & Dorothy Gallo of Pontiac, Michigan. It came out of the state of Indiana. This state seems to be the best possible hunting ground for this particular species of bears. The Gallo's plan on taking it to the I.C.G.A. convention to show it off. Bob reports that it has a little damage, but just remember that there are only five of these little gems that are known to exist in carnival glass. We would like to congratulate the Gallo's on their hunting skill and hope that they will have many more happy and fruitful hunting trips.

John & Lucile Britt

by Ivan & Betty Mitchell



GREEN MILLERSBURG "PEACOCK & URN" GIANT COMPOTE

I can think of only two compotes that will compare in size with the above. These are "Grape and Cable" open compote and the "Mikado" Compote.

This compote has a bee by the birds beak and is a variant, since it has a beaded urn. I know of only 5-7 of these and about the only time you will see one is at an occasional auction. One sold at the Jack & Liz Wilson auction, however it was amethyst. These are very rare in any color and is one of the largest compotes known. It measures 9" at the top, 5" at the base and 7 1/2" tall. These come in marigold, green and amethyst. They will sell in the \$1000 category.

Many collectors have never seen this compote and it is widely sought. The first one I ever saw, I was amazed at the size of it.

**** IOWA UNITE!!! ****

A number of Iowa collectors want to reorganize the once strong state carnival glass association. It is hoped that the group will meet periodically (perhaps quarterly) to share experiences and ideas, to educate and view the collections of its members, and to promote activities to promote carnival glass.

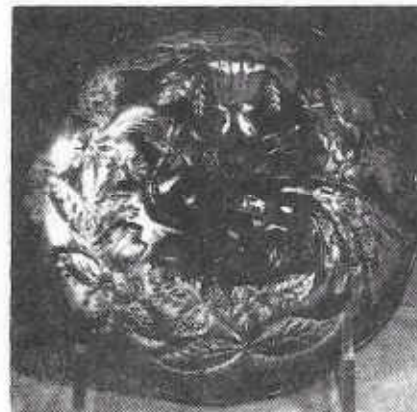
In 1973 the Iowa association hosted the International Carnival Glass Association convention. Some of those hoping to reactivate the Iowa group want to bring the ICGA or ACGA convention back to Iowa sometime soon.

Iowa glass collectors who want to join or want more information or for suggestions of organizing the group may contact Larry Keig, 3001 Union Street, Fayette, Iowa 52142 phone: 319-425-4467.

MILLERSBURG'S
MULTI-PURPOSE MOLDS

by DON MOORE

We have previously examined the way various companies used the bottom portion of the same mold for several different patterns. Fenton, for example, used the Bearded Berry portion of the mold with various interior plungers to produce such patterns as Peacock & Grape, Peter Rabbit, Leaf Chain, Peacock & Urn, etc. However, we have not fully appreciated the ingenuity employed by Millersburg in this area of economy and practicality. Remember now that all of the pieces we will look at here came from the same basic mold with the only difference being the interior pattern. The reverse design is 12 wide panels and a 28 point star.



The best known of these is the Millersburg Peacock as shown in Photo #1 in an amethyst individual ice cream bowl. This same piece was sometimes shaped into a deep berry bowl or a ruffled sauce dish. The usual colors are amethyst, green and marigold and the price will be from \$35-45. The whimsy proof sauce also comes from this mold and is rare in either of the two known colors; marigold and amethyst. One in marigold sold for \$295 at the Comer auction in November 1982.

Photo #1 - PEACOCK & URN Small Ice Cream Bowl

This 6" Peacock plate (Photo #2) is exactly the same piece shown in Photo #1 but was flattened. So in this instance, we aren't concerned with a separate interior plunger as both portions of the mold are the same. It is simply the shaping that makes the difference. Not many of these pieces were flattened into plates and they always command a good price. One sold for \$350 at the Wilson auction in February 1982. The plates are usually amethyst but one is known in marigold.

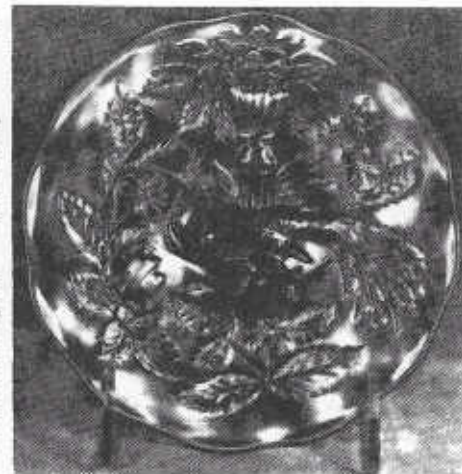


Photo #2 - PEACOCK 6" Plate

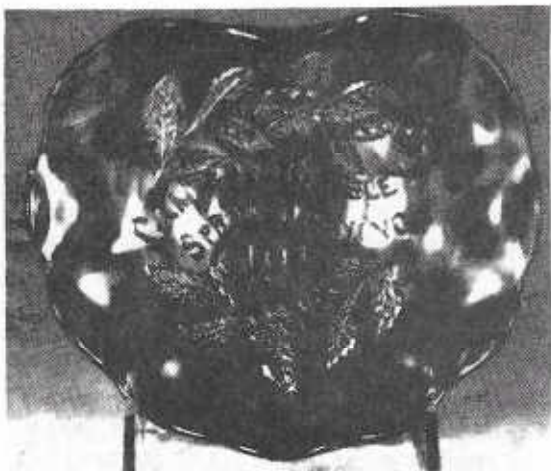


Photo #3 - SPRING OPENING

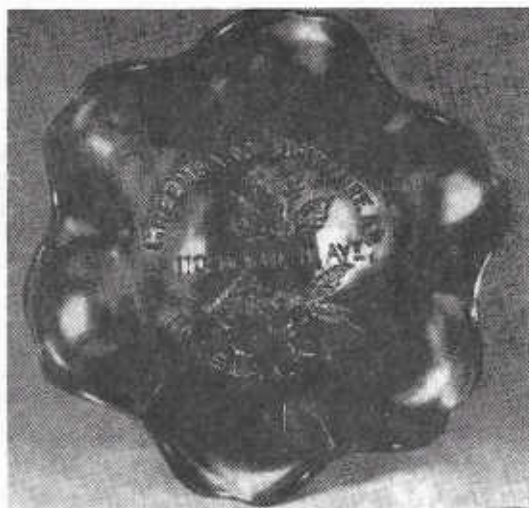


Photo #4 - GREENGARD

We don't usually associate Millersburg with advertising pieces but if we do, we think of the Issac Benesch or Bernheimer pieces. Neither of these pieces used the bottom portion of the mold we are discussing here. The pieces shown above, however, did come from that mold. The Campbell & Beesley Spring Opening handgrip plate shown in Photo #3 is a tough one to find. It will sell in the \$250-300 range. The Greengard Furniture bowl shown in Photo #4 is down right rare. No doubt others exist, but only three are confirmed. The one shown here sold for \$400 at the November 1983 Munson auction. The address shown on this piece is 11020 Michigan Avenue, Roseland, Illinois. I understand this little community has now been absorbed into the city of Chicago.

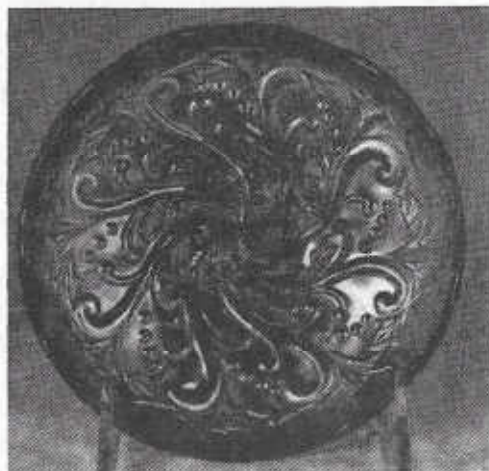


Photo #5 - SEAWEED SAUCE, amethyst

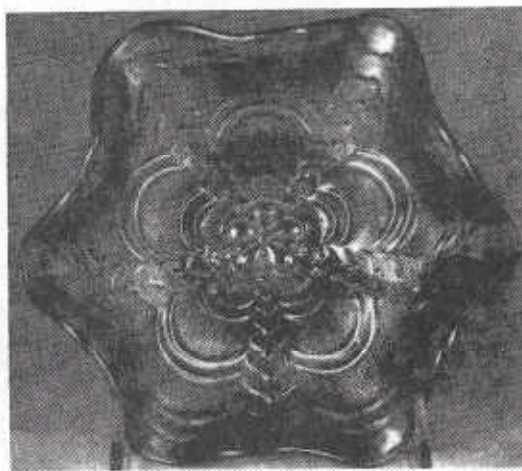


Photo #6 - ROSALIND SAUCE, green

The sauces shown on the previous page were used in an article some time ago entitled 'Super Sauces'. I did not realize at that time that these also were from the same bottom part of this same mold. These sauces are very rare and may even be the only ones known in these colors. They both came out of the 1982 Wilson auction. The Seaweed in Photo #5 sold for \$450 and the Rosalind in Photo #6 brought \$255.

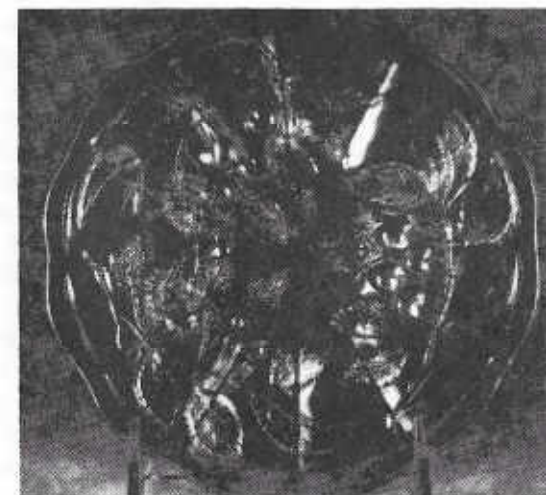


Photo #7 - HANGING CHERRIES
PLATE, marigold

The 6" Hanging Cherries plate shown above is still another example of the use of this same mold. It too, is very rare and brought \$375 at the Wilson auction. No doubt there are other pieces that also came from this mold. I suspect this is true of the Blackberry Wreath sauce and 6" plate, but I do not have these pieces to examine. I continue to be amazed by the ingenuity and artistry employed so many years ago in the making of this beautiful glass.

DON MOORE

In the June issue of the Bulletin there was a nice article on the "Los Angeles Catalog" advertising piece. I'm referring to the one that the Don Moores bought and donated to the Fenton Museum.

Mention was made of the two purchased last year in St. Louis, however, NEITHER OF THEM IS CRACKED. One had a small chip on the collar base and I still have them both.

I enjoy the Bulletin and appreciate the work you do in putting it out.

CHARLES ADAMS, California

*** AUCTION NEWS ***

From TOM MORDINI : "The Woody Auction Company had an auction on 6-25-84 at Lancaster, Wisconsin. There were about 120 pieces of Carnival Glass in the auction and some of it was of good color as well as rarity. There were no aqua opal or pastel colored pieces except for a few pieces of white. Prices generally were average except for a few that sold low and a few that brought more than expected. The Carnival Glass sold at 11AM that Sunday, here are some of the prices:

BLUE FENTON PEACOCK & URN BOWL 75, GREEN GOOD LUCK BOWL 125, PURPLE THREE FRUITS FOOTED BOWL 45
BLUE HORSES HEADS BOWL JIP (POOR COLOR) 100, BLUE ORANGE TREE SHAVING MUG 25
PURPLE BEADED SHELL MUG 30, PURPLE SINGING BIRDS MUG 55, AMBER LOGANBERRY VASE, BEAUTIFUL 275
MARIGOLD 20" RIPPLE VASE 57, GREEN HOLLY BOWL 80, WHITE 11" BIG BASKETWEAVE VASE 45
PURPLE GRAPE & CABLE; BANANA BOWL 140, 7PC WATER SET 550, BUTTER DISH 140, WHITE RUSTIC VASE 45
PURPLE WISHBONE & SPADES 6" PLATES 75 X 2, WHITE HEAVY IRIS HAT (WHIMSEY FROM TUMBLER) 200
MARIGOLD HOLLY PLATE 35, PURPLE DIAMOND LACE PITCHER & 1 TUMBLER 180, MARIGOLD DRAGON & LOTUS 20
BLUE ENAMELLED CHERRIES WATER SET 130, PURPLE MLSBS HOLLY WHIRL RADIUM BOWL 60
PURPLE GRAPE LEAVES BOWL 45, MARIGOLD WAFFLE BLOCK PUNCH SET 70, BLUE BLACKBERRY OPEN EDGE HAT 57."

** MEMBERS COMMENTS ** MEMBERS COMMENTS ** MEMBERS COMMENTS **

From BRUCE BARNFATHER: "As a member of the Canadian Carnival Glass Association in Ontario, may I assure you and your club that it is a constant pleasure to receive your monthly newsletter with such informative articles.

Most particularly, may I point out my admiration for the articles published by John & Lucile Britt. They are supreme examples of "Diplomacy" in their ability to write informative articles without a shred of "one up-manship" attitude, and that means so much to a novice collector like me!

Please give them, through your monthly newsletter, one collectors highest regards and esteem."

And from EILEEN M. CHILD: "In response to the lady whose comments appeared in the May issue, I wish to say that I have bought a goodly number of Carnival Glass items from members who offered them and have been perfectly satisfied. In addition to the beautiful glass I have bought, I have been fortunate in finding interesting "pen-pals" and would like the members of the club to know that I speak highly of the Bulletin and certainly of those from who I have bought glass."

From MARY RUSHTON: "The souvenirs are just beautiful, we are so proud of them. Sorry we are late with our dues, but we have had sickness and I have had a five day stay in the hospital, but I think we will all be OK now."

ROSEBOWL INFORMATION NEEDED

Now that the section on water sets has been completed, the next section of the H.O.A.C.G.A. notebook will be on Rose Bowls. The first information that I need to assemble is a list of the patterns, their colors and maker. I have already contacted some members who I know have Rose Bowls but I am sure that several more members also have Rose Bowls in their collection. Your help in identifying the patterns is needed. The more information that you supply the more complete the Rose bowl information will be. So if you could help supply information I would appreciate hearing from you.

Originally estimated that there would be about 40 different patterns to identify, but after talking to some Rose bowl collectors it is now estimated that about 70 different patterns exist. So you can see that I need a lot of members help to identify all of the patterns, so send your list of patterns.

Robert Grissom
7900 Crescent
Raytown, Mo. 64138
816-356-5320

THE BAKER AUCTION

On Friday June 15th we went to Richfield Ohio for the carnival glass auction. The Bill Bakers of Pattstown, Pa. were selling their collection and it was well over four hundred pieces. It looked very pretty as carnival always does when Tom Burns and his capable helpers get it all displayed under the bright lights.

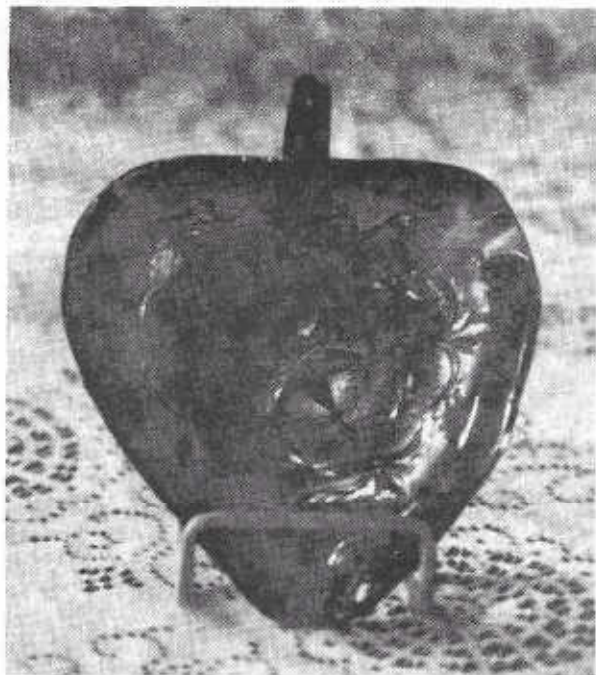
The auction began early due to the extra items usually sold. We loved the rare smoke color Zipper Loop lamp but it went for \$700 and we didn't feel we could bid higher. The red Stag & Holly bowl was top seller at \$1500 and went to a write in bid. We noticed many pieces went to number 10 which designates it a write in bid so that should have made several collectors happy. It is a way of collecting when its impossible to go.

We left the auction on Saturday about noon to go to the Wiley Addis's 50th wedding anniversary at Lakewood Ohio. The Schleedes of New York attended the auction and bought the lovely green Inverted Strawberry cuspidor. They also left for the anniversary as did the Bob Kuhls of Ashland, Ohio. We all enjoyed being there for such a happy occasion. The Raymond Heeleys of Painesville also went.

Many will remember Wiley and Catherine Addis. They were most active in ACBA for years. The celebration had a sit down dinner for about 150 people. We were short on time so had to leave a bit early as we planned to pick strawberries on the way home.

ICGA convention is near. Wonder how we can ever get ready. Feel it will be a good one.

Grace & Byron Rinehart
Charleston, WV



During our vacation to Minnesota last month, we found a very rare piece of Millersburg Carnival Glass that up to now was not known to exist. It is a Millersburg NIGHT STARS NAPPY in amethyst. As you probably know, Night Stars has been found on a 2-handled bon-bon and a card tray. Until now, no other shapes had been known.

The piece is 7" long, 6" wide, 2 1/2" deep and has the usual stippled background found on this pattern. The color and iridescence are superior and it has Radium finish.

We found this on our last day of vacation in a shop just when we thought that we were not going to find any good Carnival. I guess if you look around long enough, you will find good glass.

TOM MORDINI, Freeport, IL



BULLETIN SECRETARY

AL RETTKE and

WENDY RETTKE

As I go into my second year as Bulletin Secretary, I would like to thank all of you for your support and positive comments concerning the Bulletin. Without the help of the many collectors who share their wealth of knowledge with us each month, the Bulletin would not be the unique publication it has become. It is to them and my wife Wendy I say "Thank you" for both the articles and all the help and inspiration.

I have been collecting since about 1976 and have specialized in Northwood bird patterns and pastels for the last four years. Wendy and I look forward to many more years of collecting Carnival and the fellowship that goes with this great hobby. This position has been both a pleasure and a challenge.

AIR CAPITAL CARNIVAL GLASS CLUB

This month's meeting was held at the home of Wilma and Francis Elder. So many of our members were on the sick list our turn out was rather small. We did have 10 members and 2 guests however.

For the educational portion of the meeting several had some real nice pieces to show. A very nice clambroth Fashion bowl, a Northwood Butterfly bon bon with the grooved back, purple in color and perhaps something no one has noticed before. We have 13 Northwood baskets in our collection and one of them has a plain smooth bottom on the handle. Pictures have been taken of it and I am sure an article is forthcoming on this find. It definitely has to be a separate mold. A beautiful dark green three Fruits saw toothed edge plate was brought for everyone to look at also.

Our next meeting will be July 8, 1984 at the home of Steve and Nola Guthrie. We hope all the sick folks are well and will be able to attend.

Donald E. Kime, ACCGC Secretary

OLD CARNIVAL GLASS LIBRARY

CARNIVAL GLASS RARITIES-A color line approach. Lists the top 10 rarities in each color-plus complete rarities price guide-40 pages of black and white pictures-special section on whimsys-\$8.50 pp. Also THE SHAPE OF THINGS IN CARNIVAL GLASS, 110 pages, 200 items in full color-\$9.95. Don Moore, 2101 Shoreline Drive, Apt 462, Alameda, CA. 94501.

CARNIVAL GLASS SERIES-by Marion T. Hartung. Each book has 100 different patterns-10 books in the series, books 1,2 and 3-\$3.00 ea, books 4 thru 10-\$3.50 ea. 1981-82 price guide-\$5.00 pp, Northwood Pattern Glass-clear, colored, custard and caranival-\$9.95, plus .50 postage. Order from Ione Henshaw, 903 East 6th Ave., Emporia, KS 66801.

CARNIVAL IN LIGHTS-A full color book on Carnival Lighting, including Gone With The Wind Lamps, Candle Lamps and shades-price guide included-\$11.95 plus postage, Helen Breguire, 103 Trimer Road, Hilton, NY. 14468.

CARNIVAL GLASS TUMBLERS-Author Richard Owens-order from Don Brown, Wallace-Homestead Book Company, 1912 Grand Ave., Des Moines, IA. 50303.

THE STANDARD ENCYCLOPEDIA OF CARNIVAL GLASS REVISED EDITION NOW AVAILABLE, many new photographs and expanded European carnival section-\$24.95 (with new price guide), NEW PRICE GUIDE includes eight color columns, size 8x11 - \$4.95, IMPERIAL CARNIVAL GLASS-THE EARLY YEARS-\$9.95, FENTON CARNIVAL GLASS-THE EARLY YEARS-\$9.95, MILLERSBURG THE QUEEN OF CARNIVAL GLASS-\$8.95, NORTHWOOD, KING OF CARNIVAL GLASS-\$9.95, Bill Edwards Author, Collectors Books, Paducah, KY.

CARNIVAL GLASS--by Ray Notley, Shires Album # 104. ISBN 0 85263 637. Price is only \$3.55 including postage. Send to 7 Hills Books, 519 W. 3rd. Street, Cincinnati, OH. 45202.

CARNIVAL GLASS WORLDWIDE--by M. Quinton-Baxandale. 200 Colour Photographs * Pattern Name Index * Exclusive Research * Clubs Worldwide Listed * Order from: CARNIVALIA PUBLICATIONS, PO Box 1, LOSTWITHIEL, CORNWALL, L22 0YZ, ENGLAND US \$13.50 (surface mail) US \$15.00 (airmail) Payment with order please, by International Cheque or Money Order.

FENTON GLASS-THE FIRST 25 YEARS-144 pages, 72 in full color, more than 400 items pictured in Fenton's carnival and iridescent "stretch" colors, rare catalogue reprints (some in color), a complete history of the factory's early years, from 1907 to 1932, \$15.95 for softcover edition with price guide, \$20.00 for limited edition hardbounds. Order from the author, William Heacock, P.O. Box 27037, Columbus, OH. 43227.

Angela Hallam's 52 page fully illustrated paperback-first book to tell about the English-made Carnival-\$3.35 surface postage, air mailed \$4.35 Order from Wise Books, 82 Chart Lane, Reigate, England, RH2 7EA.

CARNIVAL GLASS AUCTION PRICE REPORT-1984 Edition. This years edition will have approximately 4000 entries from major auctions in 1983. Single copy price is still \$8.00 US postpaid (for overseas delivery, add \$1.00). Order from: Al & Wendy Rettke, 14226 E. 143rd Lane, Burnsville, MN 55337

"Encore by Dorothy" books 1 and 2. A series of books on new reproduced Carnival Glass, giving information on the patterns and colors that are being reproduced. Price for each book is \$7.70 postpaid. Be sure to state which book you want. Dorothy Taylor, Box 11734, Kansas City, MO, 64138.

"CARNIVAL GLASS" educational brochure with color photographs. Available to interested collectors or dealers who wish to better describe to and inform the public about our glass. Free of charge from the American Carnival Glass Association. Contact Ruth Schinestuhl, P.O. Box 694, Absecon, NJ 08201.

*** SPECIAL OFFER FOR FOUR WEEKS ONLY ***

By arrangement with CARNIVALIA PUBLICATIONS, we are able to take DISCOUNT ORDERS for the book "CARNIVAL GLASS WORLDWIDE". For every order placed, the Publisher will make a payment direct to the Club. Send full payment by check with name and address of recipient to: Al Rettke, 14226 East 143rd Lane, Burnsville, MN 55337. Make check payable to him.

PRICE PER COPY: US\$14.25 by Airmail or
US\$12.00 by Surface mail

Orders through this HOACGA promotion will be despatched directly to you after the publisher receives the order.

**** CARNIVAL CALENDAR ****

POLICY FOR ADVERTISING IN THE H.O.A.C.G.A. BULLETIN

JULY 21

CARNIVAL GLASS AUCTION

125 pieces of old Carnival plus other antiques. Sale will be held at the Civic Center in Miami, Oklahoma. Preview 8AM, sale at 9:30. Contact Col. Delbert Rowden @ 316-674-3357.

JULY 26-28

AMERICAN CARNIVAL GLASS ASSOCIATION'S ANNUAL CONVENTION

To be held at the Sheraton Canandaigua Inn, Canandaigua, NY. For info contact: Emma Tilton, Box 273, Gnadenhutten, OH 44629.

AUGUST 3&4

BURNS AUCTION OF THE DURAND COLLECTION

Hundreds of pieces to be sold at the Coliseum Holiday Inn, Richfield, Ohio. Tom will have brochures out later.

AUGUST 9-11

PACIFIC N.W. CARNIVAL GLASS ASSOCIATION'S ANNUAL CONVENTION

To be held at the Holiday Inn in Eugene, Oregon. For more information contact: Karen Engel, Convention Chairman, 35292 Oak View Drive, Brownsville, OR 97327.

SEPTEMBER 8-9

NEW ENGLAND CARNIVAL GLASS ASSOCIATION'S MINI-CONVENTION

Held at the American Motor Inn, Sturbridge, Mass. Contact: Betty Palmer, 413-536-4319 (after 7PM) or 413-536-2123 (days)

OCTOBER 6-7

CANADIAN CARNIVAL GLASS ASSOCIATION'S CONVENTION

Held at the Conestoga Inn, Kitchner, Ontario. Banquet on Saturday with William Heacock as speaker. Auction date has been changed to Sunday because of a collection that was just consigned. Contact: Janet Knechtel, R.R. #1, Breslau, Ontario, Canada. Phone: 519-648-2696.

OCTOBER 19-21

AIR CAPITOL CARNIVAL GLASS CLUB CONVENTION

Ray Notley, banquet speaker. Airport Sheraton Inn, 5500 W. Kellogg, Wichita, KS 67209 phone: 316-943-2181.

1. ALL ADVERTISEMENTS, ANNOUNCEMENTS, LETTERS OR ANY OTHER ITEM TO BE PRINTED MUST BE RECEIVED BY THE BULLETIN SECRETARY BY THE 1ST OF THE MONTH TO INSURE BEING PUBLISHED IN THAT MONTHS BULLETIN.
2. MEMBER FAMILIES MAY ADVERTISE 10 FOR SALE AND 10 WANT ADS PER MONTH.
3. ONLY OLD CARNIVAL GLASS ITEMS OR H.O.A.C.G.A. SOUVENIRS WILL BE PUBLISHED.
4. DAMAGE OR MANUFACTURING FLAWS SHOULD BE NOTED.
5. ALL FOR SALE ITEMS MUST BE PRICED, NO BID ITEMS WILL BE PUBLISHED.
6. A 5 DAY RETURN PRIVILEGE AT BUYERS EXPENSE PROVIDING IT IS NOT AS ADVERTISED.
7. ALL POSTAGE AND INSURANCE IS EXTRA, TO BE PAID BY BUYER.
8. ALL ADS MUST BE LEGIBLE, OR THEY WILL NOT BE PRINTED.
9. THE H.O.A.C.G.A. DOES NOT ACCEPT RESPONSIBILITY FOR THE ACCURACY OF ANY ADS.
10. THE BULLETIN SECRETARY RESERVES THE RIGHT TO EDIT SUBMITTED MATERIALS TO INSURE ACCURACY OR TO CONSERVE SPACE.

FOR ACCURACY OF DESCRIPTION, THE FOLLOWING COLOR KEY IS RECOMMENDED:

A--AMETHYST	G--GREEN	P--PURPLE
AMB--AMBER	HA--HONEY AMBER	PRL--PEARL-PASTEL ON MILK GLASS
AD--AQUA OPALESCENT	IB--ICE BLUE	PM--PASTEL MARIGOLD
AQUA--LIGHT BLUE-GREEN	IG--ICE GREEN	PO--PEACH OPALESCENT
B--BLUE	IGD--ICE GREEN OPALESCENT	R--RED
BO--BLUE OPAL OR BLUE OPAQUE	LAV--LAVENDER	RA--AMBERINA
CLM--CLAMBROTH	M--MARIGOLD	SM--SMOKEY
EB--ELECTRIC BLUE	MNG--MARIGOLD ON MILK GLASS	VAS--VASELINE

NOTE: IF YOU WISH TO DESCRIBE A PIECE AS LIGHT OR DARK, USE L OR D IN FRONT OF THE COLOR.

EXAMPLES:	AD	GOOD LUCK PLATE, ONE POINT BROKEN & REPAIRED	375.
	M	PEACOCK AT THE FOUNTAIN 7PC WATER SET, PITCHER HAS FLAKE	225.
	MNG	PEACOCK & GRAPE BOWL	360.
	LM	WISHBONE TUMBLER, HEAT CHECK	37.

IT WOULD BE GREATLY APPRECIATED BY EVERYONE IF YOU WOULD USE THESE CODES AS SUGGESTED.

VALMER CROSS SR., PRATTSVILLE, N 12468 phone: 607-588-6698

M	FASHION 7 PIECE WATER SET	275	M	DOB COVERED CANDY	25
M	WINDFLOWER BOWL	20	H	WINDMILL 8" PLATE	20
M	FRUIT LUSTRE TUMBLER	18	G	M RAYS 5" BOWL	15
M	WIDE PANEL 8" PLATE	30	PH	VINEYARD TUMBLER	12
M	HAT 2" HIGH	10	M	ASHTRAY WITH MATCH HOLDER	5

A.A. FOGLEMAN, 101 CEDARWOOD DRIVE, JAMESTOWN, NC 27282 phone: 919-454-3267

A	PEACOCK & URN MASTER ICE CREAM BOWL, N	500	AO	BEADED CABLE ROSEBOWL	320
A	ACORN BURRS 7 PIECE WATER SET, N	725	DM	FASHION 7 PIECE WATER SET	250
M	HOMESTEAD PLATE, SIGNED NU-ART, SUPER	625	A	DRAPERY ROSEBOWL, N	85
A	THREE FRUITS STIPPLED PLATE	135	DM	MILADY TUMBLER	75
M	APPLE TREE BANDED TUMBLER	35	A	MLSB6 HOBNAIL ROSEBOWL	225

CHARLES A ADAMS, 2211 SUNSET BLVD, LOS ANGELES, CA. 90026 phone: 213-483-7755

M	FASHION PUNCH BOWL & BASE	95	M	FASHION PUNCH CUPS (15) EACH	15
M	PANTHER BERRY SET, 7 PC	400	M	PANSEY SPRAY OVAL PICKLE DISH	30
M	CRABCLAW TUMBLER, FINE	85	CB	CAPTIVE ROSE 8 1/2" BOWL	55
M	WAFFLE VARIANTE 13" TALL BASKET	85	M	SODA BOLD TUMBLER	40
M	OCTAGON TUMBLERS (8) EACH	30	M	OCTAGON DECANTER W/STOPPER & 4 WINES	165

NORNA MORRISON, 3912 PENNSYLVANIA AVENUE, EUREKA, CA 95501 phone: 707-443-1319

BOOKS "COLORS IN CARNIVAL GLASS" BY SHERMAN HAND, BOOKS 1, 2, 3, 4, IN VERY GOOD CONDITION, ALL FOUR FOR \$25

MRS. CAROL MOORE, 6168 ROBERTS CREEK ROAD, ROSEBURG, OR 97470 phone: 503-679-7107 EVENTINGS

WISH TO SELL MY ENTIRE CARNIVAL GLASS VASE COLLECTION OF 169 PIECES THAT TOOK ME 20 YEARS TO ASSEMBLE
SCARCE AND RARE PIECES INCLUDED. SEND SASE FOR COMPLETE LIST AND PRICE.

TOM MORDINI, 36 N. MERNITZ AVE., FREEPORT, IL 61032 phone: 815-235-4407

A	TULIP SCROLL VASE, VERY RARE	275	P	BEADED SHELL MUG	60
P	GRAPE DELIGHT ROSEBOWL, FEET PERFECT	65	B	PEACOCK & GRAPE BOWL	60
B	FENTON'S FLOWERS ROSEBOWL, FEET PERFECT	65	B	EARLAND ROSEBOWL	55
P	BEADED BULLSEYE VASE	50	G	GRAPE & CABLE SHERBET, N	50
M	FASHION PUNCH SET WITH 3 CUPS, BEAUTIFUL	175	M	TWINS 2 PIECE FRUIT BOWL	75

JACK STEWART, 99 ASTER CIRCLE, WEYMOUTH, MASS 02188 PHONE 617-337-1304 anytime

M	IMPERIAL GRAPE WINES (EACH)	20	P	IMPERIAL GRAPE WINES (EACH)	28
M	STAR & FILE WINES (EACH)	25	CLAM	IMPERIAL GRAPE WINES (EACH)	45
M	PILLON & SUNBURST WINES (EACH)	27	P	GOLDEN HARVEST (VINTAGE) WINES (EACH)	33
P	SINGING BIRDS MUG	55	P	GRAPE & CABLE SHOT GLASSES (EACH)	190
PO	HOLLY WHIRL 1 HANDLED NAPPY (ROUND, RUFFLED)	47	PO	ESTATE CREAMER	75

CAROLYN BROOKS, 10803 SHINGLE OAK RD., RICHMOND, VA. 23237 PHONE: 804-748-5169

A	WREATH OF ROSES COMPOTE	45	M	DIAMOND & DAISY CUT WATER PITCHER	185
A	FISHERMANS MUG	80	M	TREE BARK WATER SET, (PITCHER HAS LID, 6 PC	85
M	VINEYARD WATER SET, 5 PC	175	M	COIN DOT WATER PITCHER	120
G	DAISY & PLUME COMPOTE	30	A	THISTLE BOWL (HORLACHER ADVERT)	60
G	GRAPE & CABLE HATPIN HOLDER (CRACKED)	75	A	FLUTE TOOTHPICK HOLDER, NICK	48

HAVE TO LOOK HARD TO FIND

STERLING BUTZ, 221 N ADAMS ST., ALLENTOWN, PA. 18104

M	BUTTERFLY & BERRY TABLE SET	235	M	OCTAGON WINE SET, 7 PC, WITH STOPPER	130
M	IMPERIAL GRAPE WINE SET WITH STOPPER, 7 PC	150	P	PEACOCK AT THE FOUNTAIN BUTTER DISH	160
P	GRAPE & CABLE COVERED COMPOTE	350	B	KITTENS TOOTHPICK	175
M	KITTENS CUP & SAUCER	160	M	KITTENS BANANA BOAT	140
P	MAPLE LEAF TABLE SET, SUGAR LID ROUGH	275	M	PANTHER BERRY SET 7 PC	200

LAVERN WHITE, BOX 311 GRAFTON, IA. 50440 PHONE: 515-748-2923

M	TEN HUMS TUMBLERS (3 EACH)	45	M	FENTONIA TUMBLERS (4 EACH)	45
SM	FASHION TUMBLERS (2 EACH)	65	B	ORANGE TREE TUMBLER	40
B	STORK & RUSHES TUMBLER	35	M	FASHION PUNCH CUPS (2 EACH)	15
M	SCALES PLATE 6"	55	M	WREATH ROSES ROSEBOWL	40
M	PERSIAN MEDALLION HAIR RECEIVER	65	IB	BEADED CABLE ROSEBOWL	800

LEE BRYANT, R. #1 BOX 109, DECATUR, IN. 46733 PHONE: 219-639-3415

M	GRAPE & CABLE CREAMER TO BREAKFAST SET	30	M	WREATH OF ROSES (VINTAGE INT.) PUNCH CUP	10
M	FASHION CREAMER & SUGAR	30	M	ORANGE TREE GOBLET 5 1/2"	20
PO	LEAF RAY NAPPY	27.50	PO	SKI STAR BOWL 10 1/2"	90
P	FRUIT & FLOWERS BON BON	50	M	GRAPE DELIGHT ROSE BOWL	60
M	IMPERIAL GRAPE WINE	10	A	IMPERIAL GRAPE WINE	15

DENNIS KECK, 126 CHERRY, PUNKSUTAMNEY, PA. 15767 phone: 814-938-7426

M	COLUMBIA COMPOTE, TINGE OF AMBER	30	G	IRIS COMPOTE, EXTRA NICE	45
M	FERN COMPOTE, DAISY & PLUME EXT	40	M	FLUTE SHERBERT, EDWARDS P 83	22
G	FLUTE SHERBERT, RUFFLED SIGNED M	25	M	DIVING DOLPHINS BOWL, TINY FT. FLAKE	85
P	FOUR FLOWERS 7" PLATE, AVERAGE COLOR	60	M	POPPY PICKLE DISH STRONG COLOR	45
M	CUT FLOWERS VASE, EDWARDS P 53	65	TEAL	OCTAGON SPOONER, RARE COLOR	65

DARLENE YOHE, P.O. BOX 343, STUTTGART, AR. 72160 phone: 501-673-3437

B	LEAF & BEADS ROSEBOWL	75	M	GRAPE & CABLE SUGAR, SOME ROUGHNESS	65
IB	GRAPE ARBOR TUMBLER	110	M	GRAPE ARBOR TUMBLER	110
M	VINTAGE WINE, 3 CHIPS UNDER BASE	10	P	SPRINGTIME BUTTER LID	80
P	ACORN BURR SUGAR LID	35	P	GRAPE & CABLE HATPIN HOLDER	185
A	ISAAC BEVESCH BOWL	175	P	DAHLIA SUGAR, NO TOP	55

G. "DEE" ESTEY, 4446 PAINTERS ST., NEW ORLEANS, LA. 70122 phone: 504-282-8031 SASE FOR FULL LIST

PO	STIPPLED PETALS BANANA BOWL	125	EB	GOOD LUCK BOWL, MINOR EDGE NICKS	125
EB	GOOD LUCK BOWL, FLARED, ALMOST PERFECT	175	M	DIAMOND & SUNBURST DECANTER, MINOR CHIPS ON STOPPER	85
M	GOLDEN HARVEST DECANTER AND STOPPER	95	M	GOLDEN HARVEST WINES (EACH)	25
G	DIAMOND TUMBLERS, TEAL BRN BASE (5 EACH)	65	M	HEARTS & FLOWERS COMPOTE	100
A	IRIS COMPOTE	90	M	AUSTRALIAN SWAN (3 EACH)	45

DOM STALEY, 3615 HIGHLAND LAKE, KINGWOOD, TX. 77339 phone: 713-358-0412

M	LOGANBERRY VASE	115	G	GOOD LUCK BOWL	110
M	DANDELION TUMBLER	125	P	GRAPE & CABLE SMALL PLATE	65
M	ZIPPERED LOOP LAMP, ELECTRIFIED NO DAMAGE	350	G	MAYAN BOWL (ICE CREAM SHAPE)	55
M	WATERLILY & CATTAIL TOOTHPICK	50	M	LEAF CHAIN BOWL	35
P	SPRINGTIME TUMBLER	100	G	CAPTIVE ROSE BOWL (ICE CREAM SHAPE)	40

ROBERT L. GRISSON, 7900 CRESCENT, RAYTOWN, MD. 64138 phone: 816-356-5320

M	WISTERIA TUMBLER (SLIGHT BASE ROUGHNESS)	275	M	HARVEST FLOWER TUMBLER	120
M	LEAF TIER TUMBLER, OUTSTANDING COLOR	90	M	FLUFFY PEACOCK TUMBLER	50
M	FILE TUMBLER	165	M	WHITE OAK TUMBLER, SH FLAKE ON BOTTOM	175
HONEY	COSMOS & CANE TUMBLER	175	B	DRANGE TREE ORCHARD TUMBLER (GOOD COLOR)	95
S	SODA GOLD TUMBLER	80	G	MORNING GLORY TUMBLER	750

TED SHEIBLEY, 304A HILLCREST DRIVE, NEW CUMBERLAND, PA. 17070 phone: 717-938-6417

M	GRAPE & CABLE BUTTER TOP	45	M	LUSTRE ROSE BUTTER DISH	50
CLAM	FROSTED BLOCK ROSEBOWL	55	M	GRAPE & CABLE BREAKFAST SET	85
G	IMPERIAL GRAPE TUMBLERS (6) ALL	110	G	HANGING CHERRY CREAMER & SPOONER (EACH)	60
M	DRAGON & STRAWBERRY BOWL	300	P	BROKEN ARCHES PUNCH SET W/6 CUPS	325
P	DIAMOND LACE WATER SET, 7 PC	400	M	SINGING BIRDS WATER SET, 7 PC	576

MARY HERREN, 520 S. BERRY, MORGANFIELD, KY. 502-389-3121 AFTER 5

C	SHRINE CHAMPAGNE "LOUISVILLE"	69	AMB	COLUMBIA COMPOTE	16
B	VINTAGE FERNERY, FTD	35	B	ENAMELED GROUND CHERRIES TUMBLER	15
M	VINTAGE WINES (2 BOTH FOR)	25	A	SCALES PLATE, 6 1/2" GROUND BASE	10
M	IMPERIAL GRAPE PUNCH CUP, FLAKE, PASTEL	5	M	GRAPE & CABLE PLATE, BASKETWEAVE EXT	35

CHARLIE WILTSHIRE, 4603 22ND AVE, KENDOSHA, WI. 53140 phone: 414-654-5249

VAS	ACORN RUFFLED BOWL 7 3/4"	110	VAS	PEACOCK & GRAPE BOWL ICE CREAM SHAPE 8 1/2"	250
SM	SODA GOLD TUMBLERS 4 MINT 1 HAS CHIP (ALL)	250	M	CRUCIFIX CANDLESTICKS 1 HAS MINUTE CHIP PR	500
SM	PREMIUM CANDLESTICKS PR	100	P	STRAWBERRY BOWL 6 1/2" MILLERSBURG	150
PO	SINGLE FLOWER FRAMED HAND GRIP BOWL 7 1/2"	85	CLAM	MINIATURE SHELL	50

GALEN BRADLEY, RR 3 BOX 47, MT. VERNON, MO. 65712 phone: 417-466-2618 after 5

G	DOUBLE STAR WATER PITCHER, GOOD COLOR	170	G	FEATHERED SERPENT BOWL, CANDY RIBBON EDGE	25
M	GRAPEVINE LATTICE BOWL	45	M	TREE BARK WATER PITCHER, 4 GLASSES	100

RON MANTON, P.O. BOX 12214, KANSAS CITY, KS 66112 phone: 913-299-6692

SELLING MY COLLECTION, SASE FOR LIST

HARM WESTERHUIS, RR 1 BOX 49, PLATTE, SD. 57369 phone 605-337-3631

M	GRAPE & CABLE BUTTERDISH, COMPLETE	125	M	GRAPE & CABLE PLATE, SPATULA FTD, 9"	55
M	IMPERIAL GRAPE RUFFLED PLATE 9"	40	M	IMPERIAL GRAPE RUFFLED PLATE 9"	60
M	CRACKLE CANDLE HOLDERS, PAIR	25	M	DIAMOND POINT CREAMER	19
M	LEA CREAMER	20	P	WREATHED CHERRY WATER PITCHER	
M	STAG & HOLLY SPATULA FTD BOWL	65		3 TUMBLERS 1 PERFECT 2 W/SMALL NICKS	300

EDWARD HEMENSON, 1111 N. COLLEGE, STUTTGART, ARK. 72160 PHONE: 501-673-8757/AFTER 8 PM

C	CARNIVAL HOLLY 8" BOWL (TOP EDGE SMALL CHIP)	20	M	CARNIVAL HOLLY 6" BOWL (BASKET SHAPE)	20
M	IMPERIAL GRAPE 6" BOWL	15	M	PEACOCK & GRAPE BOWL CHIP ON BASE	30
C	PERSIAN MEDALLION 8 1/2" BOWL (4 MINUTE CRACKS)	15	LM	RIBBED 9" BOWL	35
M	ROCCO 5" BOWL (SMALL CHIP ON BASE (2 EA))	10	M	ROCCO 5" BOWL (2 EA)	12.50
A	STIPPLED RAY 9 1/2" BOWL, VERY SMALL CHIP ON BASE	30	B	STIPPLED RAY 8 1/2" BOWL	50

KAREN ENGLE, 35292 OAK VIEW DRIVE, BROWNSVILLE, OR. 97327 phone: 503-466-5989 evenings

M	LOVING CUP, NICE DARK HARTGOLD	150	M	TORNADO VASE	100
M	HORSES HEAD ROSE BOWL	100	M	STAG & HOLLY ROSE BOWL	150
M	LOGANBERRY VASE	150	P	BUSHEL BASKET, ROUND	65
IG	BUSHEL BASKET, ROUND	175	M	DAISY & DRAPE VASE	125
M	CONSTELLATION COMPOTE	75	IB	HEARTS & FLOWERS COMPOTE	250

SINGLETON & CHERYL BAILEY, P.O. BOX 95, LORIS, S.C. 29364 phone: 803-736-7495

MHG	SCALES BOWL	125	M	PEACOCK & URN BOWL, COURTHOUSE SIZE SHOTGUN, MLS86	350
A	PEACOCK & URN BOWL, COURTHOUSE SIZE SHOTGUN, MLS86	325	B	MLS86 PEACOCK & URN MYSTERY BOWL	225
A	MLS86 PEACOCK & URN MYSTERY CRIMPED BOWL	225	B	MLS86 PEACOCK & URN MASTER ICE CREAM BOWL W/BEE	295
A	MLS86 PEACOCK & URN MASTER ICE CREAM BOWL W/BEE	250	B	MLS86 PEACOCK & URN BOWL, COURTHOUSE SIZE, SHOTGUN	325
A	MLS86 PEACOCK & URN MYSTERY RUFFLED BOWL	225	A	MLS86 PEACOCK & URN MYSTERY ROUND BOWL	225

RAY HITCHCOCK, RR #1 BOX 301, WINTERSSET, IA 50273 phone: 515-462-2074

R	BLACKBERRY OPEN EDGE BASKET	275	IB	BUSHEL BASKET, ROUND, N	225
B	FANTAIL 8 3/4" ICE CREAM SHAPED BOWL, FANTASTIC	150	B	HOLLY PLATE, RARE, TINY PINHEAD ON COLLAR BASE	200
P	THREE FRUITS PLATE, B.W. BACK, NICE	100	A	DANDELION MUG, N	260
IB	NIPPON BOWL, PIECRUST EDGE, B.W. BACK, N	160	B	SINGING BIRDS MUG, SUPER, N	125
P	GRAPE & CABLE ORANGE BOWL, FANTASTIC COLOR, N	235	PO	ROUND UP RUFFLED PLATE, DARK, SUPER COLOR	235

AL RETTKE, 14226 EAST 143RD LANE, BURNSVILLE, MN 55337 phone: 612-432-7489

PO	DRAGON & LOTUS R.C.EDGE BOWL, SUPER COLOR & OPAL	432	A	BLOSSOMTIME COMPOTE, DIRT SPEC ON EDGE, REAL PRETTY	91
P	GRAPE & CABLE ORANGE BOWL, FANTASTIC COLOR, FLAKE	133	A	FENTON THISTLE BANANA BOWL, WATERLILY & CATTAILS EX 145	
A	ACORN BURRS BUTTER BASE (OR SELL ME YOUR TOP)	59	IB	ROSE SNOW BOWL, SUPER COLOR, TINY COLLAR FLAKE	246

HAVE A FRIEND WHO COLLECTS CARNIVAL BUT IS NOT A MEMBER? OR MAYBE SOMEONE WHO YOU HAPPEN TO MEET AT A SALE, SHOW OR AUCTION. BE AN ACTIVE MEMBER AND HELP YOUR CLUB GROW, AND GIVE THEM THIS APPLICATION. TEAR OUT OR XEROX THIS PAGE AND PUT IT IN YOUR BILLFOLD OR PURSE SO YOU WILL HAVE IT WITH YOU WHEN THE OCCASION ARISES.

Application For Membership

HEART OF AMERICA CARNIVAL GLASS ASSOCIATION

DATE _____

NAME: _____

SPOUSE: _____

ADDRESS: _____

CITY: _____ STATE: _____ ZIP CODE: _____

TELEPHONE (optional): _____

Do you want your name in the directory? YES _____ NO _____

DUES: \$20.00 US per year - June to May - per household

We offer the best in monthly news and educational articles

SEND DUES TO: H.O.A.C.G.A.
Lucile Britt, Secretary
3048 Tamarak Drive
Manhattan, KS 66502

Recommended by: _____

CHARLOTTE TWEDDELL, 4908 DARNTON LANE, LOUISVILLE, KY 40216 PHONE: 502-447-1670
 B ORANGE TREE BREAKFAST CREAMER M THISTLE & THORN SUGAR
 M SPLIT DIAMOND SUGAR G LILY SMALL VINTAGE EPERGNE
 B BOTTOM OF VINTAGE EPERGNE

JOYCE DAVENPORT, 105 ONL TREE TRAIL, GREENVILLE, TX 75401 PHONE 214-454-6809
 P BASE TO WISHBONE EPERGNE P GRAPE & CABLE CANDLE STICK
 P GRAPE & CABLE PIN TRAY

A.A. FOGLEMAN, 101 CEDARWOOD DR., JAMESTOWN, NC 27282 PHONE: 919-454-3267
 A GRAPE & CABLE TANKARD PITCHER A GRAPE & CABLE CANDLE STICK

TED SHEIBLEY, 3044 HILLCREST DRIVE, NEW CUMBERLAND, PA. 17070 PHONE 717-938-6417
 B OR G DRAGON & STRAWBERRY BOWLS M SPRINGTIME SUGAR LID
 M GRAPE & CABLE BUTTER BOTTOM ANY PEACOCK ON FENCE PIECES
 ANY GRAPE & CABLE PLATES ANY STRAWBERRY PLATES

DENNIS KECK, 126 CHERRY STREET, PUNKSUTANNEY, PA. 15767 814-938-7426
 G MILLERSBUUG HOBNAIL BUTTER BASE P WIDE PANEL EPERGNE BASE
 M PEACOCK AT THE FOUNTAIN SUGAR LID W PALM BEACH COVERED SUGAR
 W WREATH CHERRY BUTTER DISH W PALM BEACH BUTTER BASE
 M GRAPE & CABLE MID SIZE PUNCH TOP M STORK & RUSHES PUNCH BOWL BASE
 W ORANGE TREE PUNCH BOWL BASE P GRAPE & CABLE BUTTER BASE

DON STALEY, 3615 HIGHLAND LAKE, KINGWOOD, TX. 77339 phone: 713-358-0412
 G SIX SIDED CANDLESTICK G, B, M HOLLY COMPUTE
 M GRAPE & CABLE CANDLESTICK (DARK)

COOLEY MILLER, 7605 N.W. EASTSIDE DRIVE, KANSAS CITY, MO. 64152 phone: 816-741-4635
 A0 ORANGE TREE POWDER JAR, I HAVE LID

HELEM BOURDESS, 310 LORRAINE DRIVE, BELLEVUE, ME. 68005 phone: 402-291-4490
 A0 BLACKBERRY OPEN EDGE HAT, FENTON

LLOYD R. WARD, PO BOX 787, EULESS, TX 76039 phone: 817-540-0081

ANY COLOR EPERGNE PARTS--LILLIES OR BASES

1B, 1G, W WISHBONE EPERGNE CB, 1B, 1G, W WIDE PANEL EPERGNE

G, W, R MIKADO COMPUTES W MANY FRUITS PUNCH BOWL BASE

B GRAPE & CABLE MASTER PUNCH BOWL TOP ONLY W GRAPE & CABLE INDIVIDUAL ICE CREAM BOWLS

ANY COLOR PUNCH BOWL TOPS, BASES; BUTTER DISH LIDS, BOTTOMS; COOKIE JAR TOPS, BOTTOMS; TOBACCO JAR PARTS OR PIECES, ETC.

CHARLES A. ADAMS, 2211 SUNSET BLVD., LOS ANGELES, CA 90026 phone: 213-483-7755/384-5001

ANY COLOR CARNIVAL GLASS SHADES

ANY COLOR ADVERTISING PLATES AND BOWLS

CARL DEATER, 5805 MEADOW DR., FREDERICK, MD 21701 phone: 301-473-5858

B, M BUSHEL BASKETS

SHRINERS CHAMPAGNES 1911 & 1912

AL RETTKE, 14226 EAST 143RD LANE, BURNSVILLE, MN 55337 phone: 612-432-7489

ANY OF FENTON'S PERSIAN BLUE PIECES

ANY PIECES OF SAPPHIRE BLUE OR CELESTE BLUE

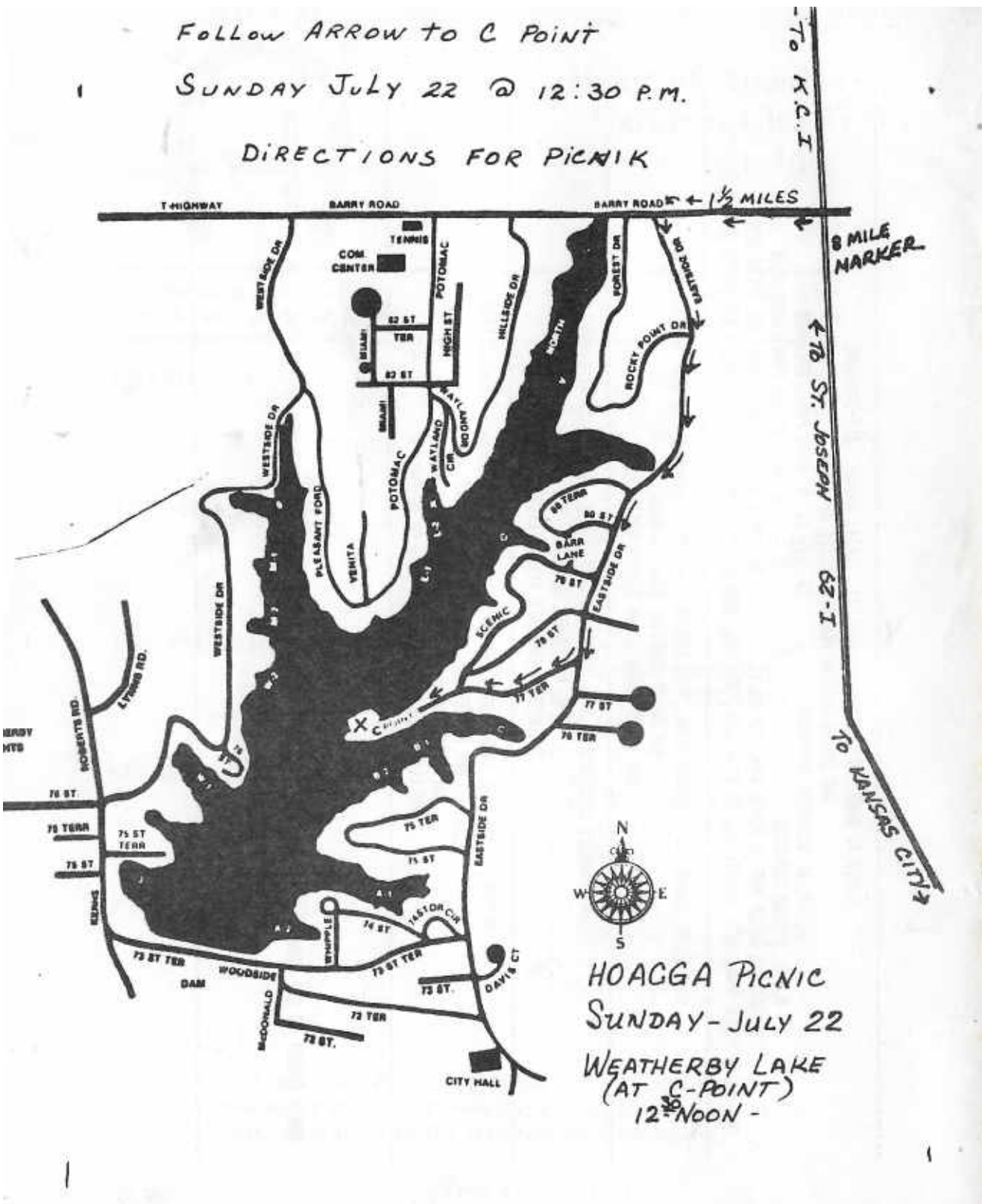
ANY ICE GREEN TUMBLERS, COMPUTES OR ROSEBOWLS

DON'T FORGET TO GET YOUR STUFF TO THE BULLETIN SECRETARY BEFORE THE FIRST OF THE MONTH IF YOU WANT IT IN THAT MONTHS ISSUE

Follow ARROW to C Point

SUNDAY JULY 22 @ 12:30 P.M.

DIRECTIONS FOR PICNIC



HOAGGA PICNIC
 SUNDAY-JULY 22
 WEATHERBY LAKE
 (AT C-POINT)
 12:30 NOON -

TO K.C.I.

8 MILE MARKER

TO ST. JOSEPH

I-29

TO KANSAS CITY

BARRY ROAD ← 1 1/2 MILES