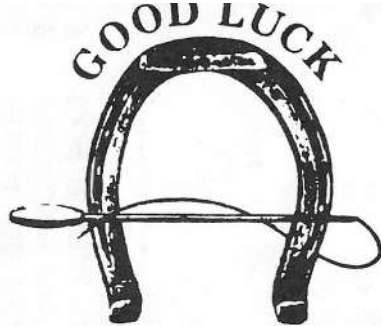


J.A.C.G.A.  
SECRETARY  
TTKE  
3rd Lane  
55337

AUGUST 15, 1984  
S M T W T F S  
1 2 3 4  
5 6 7 8 9 10 11  
12 13 14 15 16 17 18  
19 20 21 22 23 24 25  
26 27 28 29 30 31



**Heart of America  
Carnival Glass  
Association Inc.**

**Membership June to May  
\$20.00 per couple or single**

**Published the 15th  
of each month**

**PRESIDENT**

**Cooley Miller  
7605 N.W. Eastside Drive  
Kansas City, MO 64152  
816-741-4635**

**VICE-PRESIDENT**

**Diane Treff  
13646 Leavenworth Road  
Kansas City, KS 66109  
913-721-2917**

**TREASURER**

**Karen Engel  
35292 Oak View Drive  
Brownsville, OR 97327  
503-466-5989**

**SECRETARY**

**Lucile Britt  
3048 Tamarak Drive  
Manhattan, KS 66502  
913-539-1933**

**BULLETIN SECRETARY**

**Al Rettke  
14226 East 143rd Lane  
Burnsville, MN 55337  
612-432-7489**

All monetary figures quoted are in U.S. dollars.  
Please make checks for dues payable to H.O.A.C.G.A.  
and send them to the secretary as listed above.

**JULY MONTHLY MEETING OF H.O.A.C.G.A.**

On July 22, 1984, at 2PM, President Cooley Miller called the meeting to order. He then welcomed guests Fred and Dorothy Cierco, Eddie and Carol Rittenhouse, and Louise Ryan. There were 20 members present.

The minutes were approved as read. The Treasurers report was accepted as given, and placed on file. It was also announced that the display case, owned by the club, still remains unsold.

Charles and Anna Belle Vaughn reported that they attended the ICGA convention and then shared some of the highlights with us.

President Miller reported that he and George McGrew have checked with several area hotels in regards to our 1985 convention. To date, the KCI Holiday Inn looks to be the best site available in regards to room rates, meeting rooms and co-operation with respect to hospitality rooms.

Vice-President Diana Treff requested members planning to attend next months meeting bring glass they acquired at our convention or since then. With no further business, Marge Miller made a motion to adjourn. Florence Mullins seconded the motion and it was carried. The meeting was followed by pontoon boat rides and more picnicing.

The next monthly meeting will be August 26, 1984. Meeting ill begin at 2PM, room 108, KCI Holiday Inn.

DIANA TREFF, VICE-PRESIDENT

\*\*\*\*\*

YEARLY PICNIC A SUCCESS!!!

The HOACGA yearly picnic was held at Weatherby Lake on what is called "Point C". This point extends out on the lake and although the temperature was hot, there was a great breeze at the shelter house where the picnic was held. It was delightful!!

The club furnished the chicken and soft drinks, and everyone brought a covered dish, so there was lots of good food. After the picnic and meeting, Cooley made several trips taking members around the lake on his pontoon. This was refreshing and a very pretty sight.

\*\*\*\*\*

PAGE 2

**\*\* CARNIVAL CALENDAR \*\***

**SEPTEMBER 8-9**

**NEW ENGLAND CARNIVAL GLASS ASSOCIATION'S MINI-CONVENTION**

Held at the American Motor Inn, Sturbridge, Mass. Contact: Betty Palmer, 413-536-4319 (after 7PM) or 413-536-2123 (days)

**OCTOBER 6-7**

**CANADIAN CARNIVAL GLASS ASSOCIATION'S CONVENTION**

Held at the Conestoga Inn, Kitchner, Ontario. Banquet on Saturday with William Heacock as speaker. Auction date has been changed to Sunday because of a collection that was just consigned. Contact: Janet Knechtel, R.R. #1, Breslau, Ontario, Canada. Phone: 519-648-2696.

**OCTOBER 19-21**

**AIR CAPITOL CARNIVAL GLASS CLUB CONVENTION**

Ray Notley, banquet speaker. Airport Sheraton Inn, 5500 W. Kellogg, Wichita, KS 67209 phone: 316-943-2181.

\*\*\*\*\*

**ANTIQUA AUCTION AT MIAMI, OK. PROVES TO BE A SUCCESS**

Col. Delbert Rowden reports that attendance was good and bidding was fast paced. Following is a list of some of the prices the carnival brought:

B-CHRYSANTHEMUM footed bowl 100, A-STRAWBERRY bowl (N) 85,  
A-SINGING BIRDS mug 90, B-ENAMELLED CHERRIES 5 piece water set 160  
B-STAG & HOLLY bowl 195, 2 A-GOOD LUCK bowls 120 & 140, B-FANTAIL bowl 120  
A-THREE FRUITS bowl 60, A-IMPERIAL GRAPE water pitcher 250  
B-LOUISA rosebowl 130, M-ORANGE TREE footed bowl 90  
GRAPE & CABLE: B-hatpin holder 150, A-spooner 90, A-creamer 90,  
A-sweetmeat 190, A-7 piece water set 575

Approximately 125 pieces were sold with most of the pieces bringing about book price or a little above.

The Editor thanks Col. Rowden for these results.

**NEWS FROM THE AIR CAPITAL CLUB**

3RD ANNUAL CONVENTION, OCTOBER 19, 20, 21

We would again like to invite you to attend our convention which will be held at the Sheraton Inn, Wichita Airport, I-235 and US 54 West in Wichita, Kansas.

This year we will have Mr. Ray Notley from London, England as our banquet speaker. He has done a tremendous amount of research on carnival made in Europe, clarifying many patterns and their makers. He has his fine collection appearing in museums throughout England. He also has formed a carnival club in the UK and is the editor of their fine newsletter. We feel fortunate that he would travel the great distance to be our speaker.

On Friday, October 19, at approximately 3PM, we will have a program for everyone. We would like for everyone who wishes to, to bring their favorite, unusual or rare piece of carnival and tell us about it. We will get some very interesting stories during this session and you are all welcome to participate. Later on in the evening, you will be able to preview the auction glass around 7PM.

On Saturday, October 20, at 9AM, Tom Burns will begin the auction. He has promised us some good pieces will be sold. There will be home baked goodies for you to munch on during the auction and feel free to partake of these any time you wish. Saturday evening at 6PM will be the banquet.

Sunday, October 21 at 8AM we will have a farewell breakfast where we can visit again with our friends and our speaker Ray Notley before we start our journey home.

You need not be a member to attend all events including visiting all the rooms with glass for sale or trade. You may also wish to attend some of the events and we welcome all of you to come be with us.

FOR FURTHER INFORMATION, CONTACT THE SECRETARY, DONALD E. KIME, phone: 316-524-3123  
his address is: 1202 West 4th, Haysville, KS 67060

\*\*\* AIR CAPITAL MEETING NEWS \*\*\*

We held our meeting this month at the home of Nola and Steve Guthrie. Our turnout was pretty small this time but we all had a good time as usual.

One of our members brought some real nice pieces to show the group. One of the pieces was a real nice Ice Blue Corn vase. It was a very frosty blue and beautiful too. We tried to find out where she is getting all of these goodies, but she will not tell.

At the close of the meeting we were served some home-made ice cream along with a lot of other goodies by our hosts Nola and Steve. The temperature was 106 degrees outside, so it did help to cool off!!

Our next meeting, August 12th, will be a covered dish meal at the home of Roland Kuhn and Don Kime.

DONALD E. KIME, SECRETARY

It was great to see so many Carnival friends come to the International convention at Fort Mitchell, KY. It was held at the Drawbridge Inn which is probably the largest motel we have ever had for our gathering; I know I got lost over and over trying to find my way around. We never did find many of the rooms of folks we know were there and feel a loss at not seeing a lot of the winning displays.

I do not know how many attended but the banquet and auction rooms were full up. Everything was real nice and we did not hear of any problems so all went well. Jack Adams' term ended and Bob Lovell was selected as President, he seems quite capable and we're sure he'll do a good job. He was convention chairman and came up with the ideas for the punch bowl room and the ice cream party, both were very successful. There were 64 punch bowls in different patterns and they created a lot of interest. The old fashioned ice cream party was a rousing success also, and thanks are due to the local members who helped dip out the delicious ice cream. The hospitality room was open often with lots of cheeses, dips, etc. A great party.

The Galvins of Australia came for their third visit to the US conventions. It is surprising the rare carnival they find. Margret Dickinson also came from Australia, she is the Secretary of the Australian Carnival Club which will celebrate its 10th anniversary next year. Our Canadian neighbors also have their own club and this year plan their first convention. Janet Knechtel and Sandy Seigel came over to visit from the Fenton factory one evening, they were getting their souvenirs made. Carnival seems to be all over the world and nowhere else could you find any nicer people than our carnival group.

The awards presentations were at the Saturday breakfast, many were given out for service to the club and the displays. There also was time for the final good-byes and then time to pack and head home.

We got home Saturday evening and hurried to get our carnival washed and back in place for the next day. We had just finished up when the Galvins and Margret Dickinson called from a motel saying that they could come by and visit, they were on their way to Fentons and to visit carnival friends up North. We enjoyed having them and being able to talk carnival. Margret is going to stay for the ACGA convention and we are happy about that.

Wally McDaniell also came by on his way to Fentons and then South to the Worlds Fair with sidetrips to visit carnival friends until the ACGA convention in NY. He is on the Board of Directors of the ICGA and especially loves the Good Luck items. The trouble we have is we love it all and can't settle down to one specific pattern, although we probably could live nicely with just the Kitten pieces.

GRACE & BYRON RINEHART, Charleston, WV

\*\*\*\*\*

Along with more 100 degree days in Sacramento than I care to remember, the second quarter of 1984 was an especially hot one for yours truly, carnival collecting wise. It started while attending the HOACGA convention at Kansas City. Incidentally, for my money, you can have the Airport Holiday Inn. Yes, the Holiday personnel were most accommodating, but I hate walking down hallway after hallway, peeking through doors to jog my (lack of) memory relative to whether I'd been there or not, or if I had, whether I wanted to return. Give me a Holiday anytime! But I digress. While attending the festivities, my Carnival Mother and I consummated an agreement made the year before. I was given the chance to buy what to me, and her, is the ultimate piece of Carnival going, a master Peacock & Urn ice cream bowl in aqua opal. I've been fortunate enough to have seen four of the eight or nine known ones, and must confess I'm very prejudiced towards the one hanging on my wall. I was most flattered by Floyd Whitley when he said to me it was "The most beautiful piece of carnival I've seen". Thanks and love you Helen.

Also at HOACGA, this computer guy teased me with a bowl that now resides on my shelf in Sacramento. Knowing that a favorite pattern of mine (and lots of others) is Embroidered Mums, he brought a true aqua based bowl with super iridescence. As I said, it looks great next to my AD one. Sure would like to buy a dark green and a white one. For now, I'm quite happy with the ones I have. Thanks Al.

My luck continued in May when another close friend decided to sell a significant portion of his collection. I was able to obtain a marigold-on-milkglass (Moonstone, according to the tall, stately white haired gentleman who graces our conventions and seems to know quite a bit about glass) Peacock & urn bowl. Interestingly, this bowl was brought back to the good old US of A from England by the DeLouras, long time members of our local Northern California club. Seems as if most of the four or five known bowls can be traced to England. Thank you Buz.

Also in May or early June, I was able to buy a green Hearts & Flowers bowl. I own, and have seen several ice green bowls, but can't recall seeing any other dark green ones, although another close friend has a dark green plate. As this is a favorite pattern of mine in bowls, I was very pleased to add it to my collection. Thanks Bob.

In June, I worked out a trade with another close friend. I had to give up some pieces I really didn't care to, but as Bill Carroll always used to say, "you have to give something good, to get something good". But now, a dynamite stippled Teal Grape & Cable plate resides next to my bowl of the same color. Thanks, Helen.

To close this out, early in July I was able to buy a set that up to now has been kind of a Fantasy Island item; a perfect ice blue Acorn Burrs punch set complete with six cups. While I'm sure there are others out there, I personally know of only the two other California sets (owned by Charlotte & Gordon Williams and Don & Connie Moore). In any event, what a gorgeous piece(s) of glass! I feel most fortunate to own it and it looks so pretty next to my white one. Anybody want to sell the ice green one?

All in all, what a quarter! If I don't buy another piece of glass the next six months (fat chance), it's been a great year.

\*\*\*\*\*

## UPCOMING HOACGA MONTHLY PROGRAMS

SEPTEMBER Out of town members please send me photos, letters or information in regards to Carnival Glass. Your material may be educational or your opinions or suggestions for the HOACGA Bulletin, the Pattern Notebook, the convention, or anything about our organization in general.

OCTOBER NATIONAL CARNIVAL GLASS MONTH. Let's all promote this glass!!  
You personally could set up a display, or recruit new members!!

DIANA TREFF, VICE-PRESIDENT

\*\*\*\*\*

### \*\*\* UNLISTED PITCHER SURFACES \*\*\*



The name of this unusual pitcher is "TOLTEC" and the name was found in a book on McKee pressed glass patterns. It is the large, one gallon tankard size and a beautiful marigold color. Four different sizes were made in this pattern in pressed glass but as far as we know, this is the only example known in Carnival Glass.

We are very proud of this beautiful pitcher. We purchased it from some very wonderful people that we are very grateful to, Chester and Iris Herring.

M/M ELVIS RANDELL  
TULSA, OK

\*\*\*\*\*

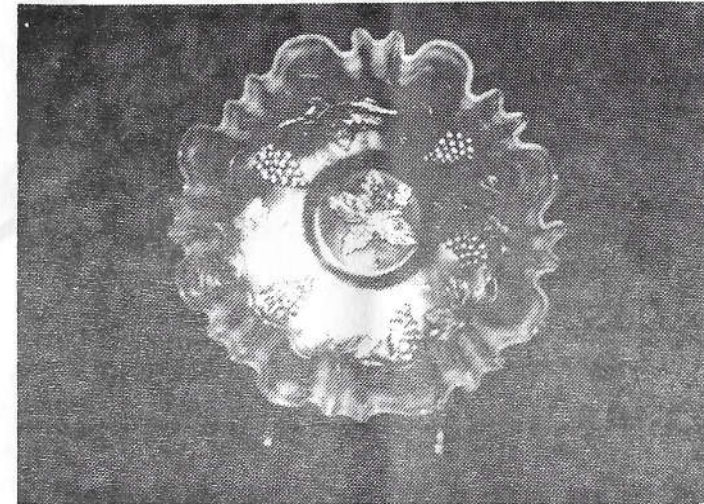
\*\* THANK YOU \*\*

I would like to thank all of our friends who called or sent cards while I was in the hospital and after I returned home. My stay in the hospital was two days less than three weeks. I had two operations, the major one was a femoral aorta bypass. I'm getting along pretty well but hear it takes a long time to get back to normal.

MARGE MILLER, KANSAS CITY

\*\*\*\*\*

## RARITIES and SELDOM SEEN by Ivan & Betty Mitchell



### AQUA-OPALESCENT VINTAGE BOWL - FENTON

This 8 3/4" bowl is very rare, in fact I have not seen another with this type of edging. This RIBBON CANDY EDGE has one large ruffle separated by three smaller ones all the way around.

I have seen another type of candy ribbon edge on this type of bowl, it has tighter continuous crimping all the way around the bowl. These are also rare and I have seen only two.

The above bowl has opalescence down the complete width of the crimping, more so than most Fenton aqua-opal pieces. The iridescence has pink and blue highlights. This bowl will sell in the \$1000 category.

\*\*\*\*\*

### CAN YOU HELP ???

I have recently found a huge marigold insulator, 8" high and 11" diameter at the base. It is embossed with the following: Pyrex T.M. U.S. Pat. Off. Made in U.S.A.

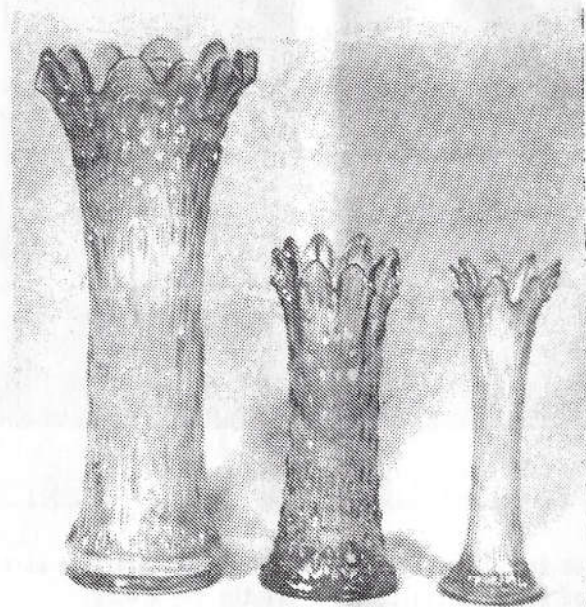
Can anyone tell me why they would iridize an insulator or any other things about it's history or value?

NORMA WAGNER, BOX 7362, SPIRIT LAKE, IA. 51360

\*\*\*\*\*

# Carnival Cameos

BY DONALD MOORE



TREE TRUNK VASES-NORTHWOOD

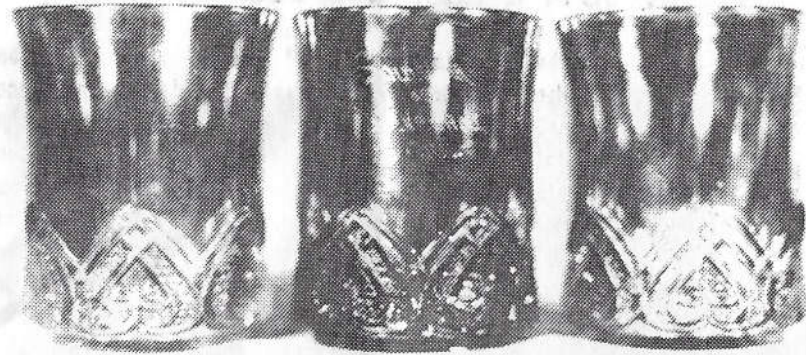
There has been much confusion as to the various sizes of the Tree Trunk vases. The reason for this is that we usually think of size in terms of height. Actually, height has little to do with it as the smaller size may be swung out to be taller than one of the larger size. Note the small size base on the right in the picture above is nearly as tall as the larger size in the middle.

Size is determined only by the diameter of the base. The vases shown here represent the three known sizes in this pattern. If there are other sizes, I am not aware of them. The one on the left is the "funeral size", it measures 5 1/4" at the base. The one in the center is known as the "middle size", the base is 4 5/8". The one on the right is called the "small size", it measures 3 3/8".

The vases shown above are rare because they are all ICE GREEN. The funeral size shown at left sold for \$750 at the Carroll auction in September 1983. It is one of 2 or 3 in this color. The middle size sold for \$300 at the Jerkenstad auction in May 1981. The small size will sell in the \$75-100 range. As previously pointed out, they will vary greatly in height. Now and then, for example, the funeral size is found in "squashed" down into what we call the "elephant foot" vase. Even so, it is still the "funeral" vase size.

PAGE 9

\*\*\* EDUCATIONAL TUMBLER SERIES \*\*\*  
by John & Lucile Britt



HEART BAND - A MCKEE TUMBLER

The "Heart Band" is a rare tumbler, I have seen a very few of these in all of my travels. It is shown above in marigold, green and lavender base glass. The green one in the center has "Souvenir of Cleveland, Ohio" stenciled on the side. The other two do not have the souvenir stenciling, but it is quite possible that it has worn off from time and use. Most of the very few "Heart Band" iridescent tumblers that I have seen do have a souvenir inscription on the side.

It is interesting to note that McKee produced this tumbler in large quantities in ruby stain glass but only a few in carnival. The souvenir tumblers in ruby stain are easily found. This pattern is listed in an old McKee catalog as No. 139 for decorating. It was a very popular pattern for the use of souvenirs as the large upper portion of the piece was plain and there is no pattern to hinder souvenir inscriptions. The page from the old catalog shows the "Heart Band" pattern as being made in a tumbler, 1/2 pint cream, individual sugar and creamer, toothpick, custard, large and small mugs, handled tumbler and salt and pepper shakers. These were especially made for decorating or souvenir pieces.

In addition to the tumblers that were made in carnival glass, we have seen the mugs in two sizes, the individual sugar and the 1/2 pint creamer all iridised. Carnival glass mugs are known in both sizes in marigold, green and a sort of aqua-teal color. Any of these pieces are considered rare in carnival. The lavender base glass tumbler shown above is the only one we have ever seen.

I know of only three or four green examples. I am sure there are others out there, but I have not seen or heard of them. Some of the tumblers and mugs in this pattern have a rather light color and iridescence, others, like the three pictured, are excellent. I have never seen a water pitcher in this pattern, even though they could exist. I suspect that the tumblers were made as souvenir items for circuses, fairs or carnivals and it is quite likely that no pitcher was made to go with the tumblers. These hard to find "Heart Band" carnival glass tumblers are very pretty, especially the darker colored shades, and they would make an excellent addition to any tumbler collection.

PAGE 10

This article is #79 in this series. Next month we will cover Northwood's outstanding "Wishbone" pattern.

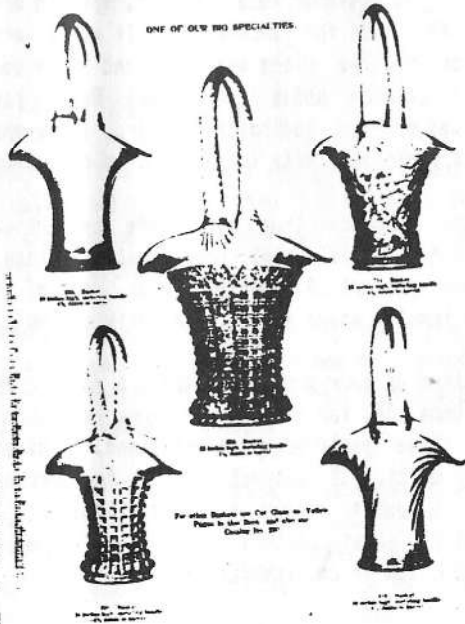
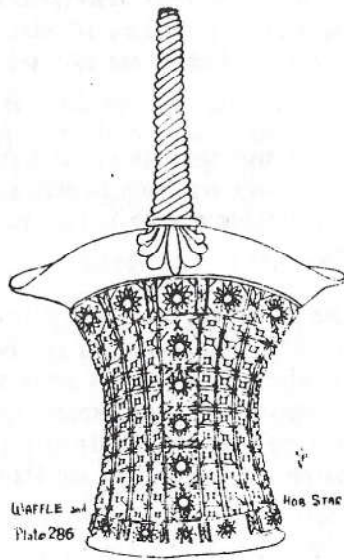
\*\*\* PICTORIAL PATTERN PARADE \*\*\*  
by John & Lucile Britt

The "Waffle & Hobstar" basket is not listed in any of the Hartung books. It can be found in Presznick book 2 - plate 286 and was named "Waffle & Hobstar" by the late Mrs. Presznick. This basket is somewhat larger than the regular "Waffle Block" basket. "Waffle Block" baskets are not only smaller (10" high) but they are much more common. The "Waffle & Hobstar" basket is 13" high to the top of the handle and we consider this basket to be quite scarce. The few that we have seen were in a good marigold color. In addition to the waffle like blocks that are found in both patterns, the "Waffle & Hobstar" also contains rows of daisy like figures or hobstars in its pattern make-up.

We are including a photostatic copy from an old Imperial catalog which proves that this basket was made by Imperial. In this cut, the "Waffle & Hobstar" is in the center. The "Waffle Block" is shown in the lower lefthand corner. Note the larger size and pattern make up of the "Waffle & Hobstar" basket.

We are also including a copy of a drawing from Presznick book 2 because this may show the pattern somewhat better than the snapshot.

WAFFLE & HOBSTAR - AN IMPERIAL BASKET



\*\*\* GLASS FOR SALE \*\* GLASS FOR SALE \*\* GLASS FOR SALE \*\*

P	IVAN MITCHELL, 215 SOUTH GRAND, HOUSTON, MO 65483 phone: 417-967-2140 DAYS, 417-967-3437 EVENINGS	685
G	RASPBERRY 7 PIECE WATER SET	425
B	BUTTERFLY & FERN 7 PIECE WATER SET	365
A	DIAMONDS 6 PIECE WATER SET	
P	NORENE CAMPBELL, BOX 107, OCTATE, NH 87734 phone: 505-666-2337 SASE FOR LIST OF CARNIVAL FOR SALE	37.50
P	GREEK KEY TUMBLER, 2 EACH	42
P	VINEYARD TUMBLER, 2 EACH	72
B	BLUEBERRY TUMBLER	70
M	ACORN BURRS TUMBLER, 2 EACH	39
M	ROBIN TUMBLER, 2 EACH	
P	ORIENTAL POPPY TUMBLER, 4 EACH	
P	GRAPE ARBOR TUMBLER	
B	TEN NUMS TUMBLER	
M	JEWELLED HEART TUMBLER, 2 EACH	
A	BUTTERFLY & FERN TUMBLER, 2 EACH	
G	OMER SWEENEY, 28 ESMOND STREET, ESMOND, RI 02917 phone: 401-231-4108	60
P	GRAPE & GOTHIC ARCHES SUGAR, TINY FLAKE ON KNOB	125
P	SPRINGTIME CREAMER	75
R	BLACKBERRY SPRAY HAT	60
B	BLUEBERRY TUMBLER	35
M	CIRCLE SCROLL TUMBLER	
P	AL SEBAUGH, 911 FT. DONELSON DR., ST. LOUIS, MO 63123 phone: 314-843-6122	395
PO	DIAMOND LACE PITCHER & 3 TUMBLERS	200
R	FLOWERS & FRAMES 9" BOWL	50
R	HOACGA 1978 CORN VASE	50
R	HOACGA 1979 LOVING CUP	70
M	FLUTE TOOTHPICK HOLDER	
B	BILLY G. HUGHES, 30 PARK STREET, FARRINGTON, MD 63640 phone: 314-756-3172	65
G	BUTTERFLY & BERRY CREAMER, RARE COLOR	
G	DM GRAPE & CABLE PITCHER & 6 TUMBLERS	
R	R HOACGA WHISKEY DECANTER & 5 SHOT GLASSES	
R	I6 HOACGA 1980 HATPIN HOLDER	
R	IB HOACGA 1982 CORN VASE	
M	A FLUTE TOOTHPICK HOLDER	
G	BILLY G. HUGHES, 30 PARK STREET, FARRINGTON, MD 63640 phone: 314-756-3172	
G	G BUTTERFLY & BERRY SPOONER, RARE COLOR	
P	DICK HATSCHER, BOX 261, WALNUT HILL ROAD, BETHEL, CN 06801 phone: 203-743-1468	
P	P SCARAB OR DRAGONFLY HATPINS, HAVE MANY, EACH	12
P	P TOP OF THE MORNING HATPINS, HAVE MANY	12

BARBARA E. ROWE, SHOREHAM, VT 05770 phone: 802-948-2090

M	GRAPE & CABLE PUNCH BASE & 6 CUPS	100	M	STAR MEDALLION PUNCH CUP	15
P	GRAPE & CABLE PUNCH CUP	30	A	STIPPLED RAYS 8 3/4" BOWL, N	35
M	OCTAGON MILK PITCHER	65	M	FLARED RIB VASE, 5.5" TALL, 5.25" ACROSS TOP	18
A	LONG THUMBPRINT VASE, 7.25" TALL	22			

BARB FARMER, RD 5, BOX 462, WHEELING, WV 26003 phone: 304-336-7689

M	LEAF TIERS NAPPY, VERY FROSTY	45	M	HOBSTAR CRACKER JAR, NO LID	30
IG	PASTEL SWAN, SMALL CHIP	10	P	GRAPE & CABLE SMALL BERRY ON PEDESTAL	65
M	LARGE BASKET WEAVE BASKET	40	PH	RIB & FILE HAT	20
A	MLS86 PEACOCK & URN SAUCE	45	DM	WISHBONE FOOTED BOWL	45
B	OPEN EDGE BASKET, SMALL	25			

ARTHUR I. SMITH, 4535 HOLDER COURT, LAKELAND, FL 33803 phone: 613-644-4058  
 CARNIVAL GLASS COLLECTORS ITEM, WOMAN'S DAY MAGAZINE, AUGUST, 1985 EDITION IN MINT CONDITION \$12.95 + postage  
 FEATURING A DICTIONARY OF CARNIVAL GLASS, 9 PAGES AND 100 COLOR PHOTOS PLUS TEXT

O. "DEE" ESTEY, 4446 PAINTERS STREET, NEW ORLEANS, LA 70122 phone: 504-282-8031  
 SELLING ENTIRE COLLECTION  
 SEND SASE FOR LIST

PAT CALL, 34 LOVELL ROAD, STRATHAM, NH 03885 phone: 603-778-0660  
 \*SASE FOR LIST REVISED JULY 84\*

STERLING BUTZ, 221 NORTH ADAMS STREET, ALLENTOWN, PA 18104

M	DANDELION 7 PC WATER SET	600	A	DANDELION 7 PC WATER SET	800
A	GRAPE & CABLE COVERED COMPOTE	350	M	TEN HUMS 7 PC WATER SET	850
A	GRAPE & CABLE PUNCH BOWL & BASE	300	B	ATLANTIC CITY ELKS BOWL	400
A	MLS86 COURTHOUSE BOWL	400	B	GRAPE & CABLE ORANGE BOWL	160
M	GRAPE & CABLE LARGE ORANGE BOWL	160	M	GRAPE & CABLE SMALL ORANGE BOWL	140

D.W. EVANS, 617 EAST 18TH, SOUTH SIOUX CITY, NE 68776 phone: 402-494-5269

A	FLUFFY PEACOCK TUMBLER	50	A	BEADED SHELL TUMBLER	50
B	BEADED SHELL TUMBLER	50	B	ORANGE TREE FOOTED TUMBLER	35
G	FOUR-SEVENTY-FOUR MILK PITCHER	175	G	LOGANBERRY VASE	170
				VIOLET IRIS 7 1/2" COMPOTE	45

BARBARA NELSON, RFD 4 BOX 155, LACONIA, NH 03246 phone: 603-293-7246

M	BUTTERFLY & BERRY BUTTER LID, MED. MARI	27	M	DRAGON & LOTUS 9" BOWL, RICH SATINY COLOR	45
M	HORSES HEADS 7 1/2" PLATE, MED. MARI	140	P	TORNADO VASE, PLAIN, CHIP OFF OF BASE, SUPER COLOR	40
G	LOUISA ROSEBOWL, GOOD FEET	50	B	PEACOCK & GRAPE 8 1/2" BOWL	50
PO	SMOOTH RAYS 7 1/2" BOWL	35	PO	SKI STAR 11" BOWL, COMPASS EXT.	65
PO	QUESTION MARKS BON-BON, OPAL ON MOST OF EXT.	55	B	BUSHEL BASKET, GOOD FEET, ROUND	55

MARY HERREN, 520 SOUTH BERRY, MORGANFIELD, KY 42437 phone AFTER 5: 502-389-3121

P	SCROLL EMBOSSED 8" BOWL, FILE EXT, SUPER COLOR	35	AQUA	THIN RIB 9 1/2" VASE	30
M	BROKEN ARCHES PUNCH CUP	15	A	GRAPE & CABLE LARGE SIZE PUNCH CUP	18
M	VINTAGE WINE, HAVE 2, EACH	10	A	GRAPE & CABLE PITCHER, SMALL CHIP ONE THUMBPRINT	125
A	GRAPE & CABLE TUMBLERS, ALL 5	100			

BERNIE MAHN, 1001 ROCK ROAD, DESOTO, MO 63020 phone: 314-586-6226

IG	BUSHEL BASKET, N, 8-SIDED	250	P	GRAPE & CABLE 9" PLATE, N, BASKETWEAVE BACK	85
G	GRAPE & CABLE COLOGNE STOPPER	70	M	LEAF CHAIN 6" BOWL	30
M	ROSE SPRAY COMPOTE	55	M	APPLE BLOSSOM ROSE BOWL	35
A	BLACKBERRY WREATH COMPOTE	45	M	THISTLE BANANA BOWL, SCARCE	175
M	WINE & ROSES SOBLETS, HAVE 3, EACH	33			

PAUL JANKAUER, 5 COURT OF OVERLOOK BLUFF, NORTHBROOK, IL 60062 phone: 312-272-4440 WEEKDAYS ONLY

AD	DRAPERY ROSEBOWL	255	P	FINECUT & ROSES ROSEBOWL	80
G	DANDELION MUG	700	RED	COINDOT BOWL, BRILLIANT RED	725
P	GRAPE & CABLE HATPIN HOLDER	175	P	HERON MUG	225
M	PEACOCKS PLATE, EXTRA FLAT	250	M	FINECUT & ROSES ROSEBOWL, EXTRA RARE, TINEST CHIP	165
B	STRAWBERRY SCROLL PITCHER	1850	P	HOBNAIL ROSEBOWL	285

BONNIE PARKHURST, RD #1 BOX 74, ONEIDA, NY 13421 phone: 315-363-3747 AFTER 6PM

M	POINSETTIA MILK PITCHER	60	M	BOSTON ONE QUART WINE BOTTLE	16
M	DAISY & PLUME STEMMED ROSEBOWL	35	M	WHIRLING STAR PUNCH BOWL & BASE	80
M	SHELL & JEWEL CREAMER & SUGAR W. LIDS, 58 BOTH, EACH 32	32	P	GRAPE & CABLE BANANA BOWL, SMALL CHIP ON OUTSIDE	75
LM	SHIPS & STARS PLATE	18	PM	BUTTERFLY & BERRY MASTER BERRY, FANTAIL INTERIOR	42
G	IMPERIAL GRAPE WINE DECANTER, NO STOPPER	35	G	DIAMOND & RIB VASE	25



DICK WETHERBEE, 847 STAFFORD STREET, ROCHESTER, MA 01542 phone: 617-892-4420

M GREEK KEY UMBRELLA SHAPED LAMP SHADE, NUART 28 P RIPPLE 9" FLARED VASE 32  
 M OPEN ROSE 7 PC BERRY SET, ALL MATCH 65 P0 HONEYCOMB/BEADS FLOWERS 7" CARD TRAY 65  
 M BULLSEYE & BEADS 11" VASE, DEEP BRILLIANT COLOR 28 G PANSY SPRAY 5 1/2" SINGLE HANDLED NAPPY 25  
 M LATTICE & POINTS-DAISY CENTER 8" VASE 27 TEAL CORINTH 8" JACK-IN-PULPIT VASE 48  
 M FROSTED BLOCK 5" ROSEBOWL, SMALL SIZE 25 AMBER LEAF SWIRL 6" COMPOTE, RARE COLOR 65

JACKIE TYLER, BOX 647, BALDWIN, WI 54002 phone: 715-684-2397

M PEACOCK & URN BOWL, FENTON 80 LM DAHLIA BUTTERDISH, COVERED 85  
 A BUTTERFLIES BON-BON 40 P WINDMILL BOWL, OVAL 45  
 G HEART & VINE BOWL 35 M THREE FRUITS STIPPLED PLATE, NICE 80  
 M WATERLILY & CATTAILS TUMBLERS 18 B0 SCALES BOWL, LOVELY! 300  
 P FOOTED SHELL, 3" 30 G SCROLL EMBOSSED COMPOTE 25

TED SHEIBLEY, 304A HILLCREST DRIVE, NEW CUMBERLAND, PA 17070 phone: 717-938-6417

B GRAPE & GOTHIC ARCHES SPOONER-CREAMER, EACH 60 M DRAGON & LOTUS RUFFLED PLATE 350  
 M BUTTERFLY & BERRY TUMBLERS, HAVE 2, EACH 20 B BUTTERFLY & BERRY TUMBLERS, HAVE 2, EACH 30  
 A STAR OF DAVID & BONS BOWL 50 G STRUTTING PEACOCK CREAMER & SUGAR 40  
 M GRAPE & CABLE PUNCH BASE 35 M DIAMOND LACE BERRY BOWLS, HAVE 6, EACH 10  
 SM FLORAL & OPTIC BOWL 35 M GOLDEN GRAPES DISH 25

DELOURS M. CRAFT, 702 BRADLEY DRIVE, BLOOMINGTON, IL 61701 phone: 309-662-3610

1B PEACOCKS PLATE 720  
 G HORSES HEADS 7 1/2" FOOTED DISH, PINHEAD ON 1 FOOT 145

REG K. DUNHAM, BOX 354, JACKSONVILLE, IL 62650 phone: 217-243-5489

LAV STAG & HOLLY 11" BOWL 225 G GRAPE & CABLE BUTTERDISH 150  
 G BUTTERFLY & BERRY BUTTER BASE 50 G LITTLE STARS BOWL 90  
 IG ENAMELLED CROCUS BULBOUS PITCHER 200 P ZIPPERED HEART 6PC BERRY SET 225  
 P BEADED CABLE ROSEBOWL, RIBBED INTERIOR 55 G MEMPHIS PUNCH CUPS, EACH 30

Y. BAURY, 438 14TH AVENUE, TWO MOUNTAINS, QUEBEC, CANADA, J7R 3W7 phone: 514-472-0830

M INVERTED STRAWBERRY LARGE COMPOTE. MINT 225

JOHN MIKKONEN, RRI BOX 474F, SHAKOPEE, MN 55379 phone: 612-445-6098

R WIDE PANEL GOBLET 100 M MILADY TUMBLER 75  
 M LATTICE & GRAPE TUMBLER 25 M VINYARD TUMBLER 45  
 M GRAPEVINE LATTICE TUMBLER 45 M FOUR FLOWERS VARIET 9" BOWL 45  
 M FERN COMPOTE 110 M SNOW FANCY BOWL 75  
 A PEACOCK & URN CHOP PLATE 700 M GRAPE & CABLE BON-BON 45

RAY HITCHCOCK, RRI BOX 301, WINTERSET, IA 50273 phone: 515-462-2074

M KITTENS CUP, DARK MARIGOLD, KITTENS GOOD DETAIL 100 A DAVIDSON'S SOCIETY CHOCOLATE PLATE, N, 2 SIDES UP 195  
 M SINGING BIRDS 7 PIECE WATERSET, N 425 M PEACOCK & FOUNTAIN 7 PIECE WATERSET, N, SUPER COLOR 475  
 M AMARYLLIS COMPOTE, FLATTENED TO 5.5", DARK & SUPER 180 M HONEYCOMB LAMP & SHADE 225  
 M ZIPPERED LOOP LAMP, HARD TO SEE INTERNAL CRACK 100 B HANGING CHERRIES PIECRUST EDGE BOWL, VERY RARE 600  
 G AUTUMN ACORNS PLATE, VERY RARE 925

DARLENE YONE, P.O. BOX 343, STUTTGART, AR 72160 phone: 501-673-3437

A BEADED CABLE ROSEBOWL 70 B DRAPERY ROSEBOWL 75  
 P LEAF & BEADS ROSEBOWL 75 B LEAF & BEADS ROSEBOWL 75  
 AQUA LEAF & BEADS ROSEBOWL 150 G LOUISA ROSEBOWL 70  
 M GARLAND ROSEBOWL 45 M AMARYLLIS COMPOTE 140  
 G BUTTERFLY & BERRY MASTER BERRY BOWL, RARE COLOR 135 A ISAAC BENESCH BOWL 165

D.B. KECK, 126 CHERRY STREET, PUNXSUTANNEY, PA 15767 phone: 814-938-7426

VAS SAILBOATS WINE 125 W WREATHED CHERRY CREAMER, NO DECOR 90  
 M WREATHED CHERRY SPOONER, NO DECOR, (ALL 3 PC FOR 250) 85 M WREATHED CHERRY COVERED SUGAR, NO DECOR, FLAKE LID 95  
 M FENTONIA BUTTERDISH, TWO TINY FLAKES ON LID, SCARCE 85 M PALM BEACH CREAMER 95  
 M PALM BEACH SPOONER (ALL 3 FOR 265) 85 M PALM BEACH BUTTERDISH, FLAKE ON FITTING RING BASE 110  
 M THREE FRUITS PALTE, BASKETWEAVE BACK, N 65 M FRUITS & FLOWERS MASTER BERRY BOWL, SCARCE 45

HAROLD FORTNEY, 3710 WYANDOTTE, APT. 5, KANSAS CITY, MO 64111 phone: 816-531-6197

M SINGING BIRDS 6 PC WATERSET, SLIGHT FLAM, DARK 225 RED BLACKBERRY SPRAY HAT SHAPE 195  
 P DIAMOND LACE 9" BOWL, GORBEUS IRID. 60 B SINGING BIRDS MUG, N 60  
 B ORANGE TREE HATPIN HOLDER, FEET EXCELLENT 150 B ORANGE TREE POWDER JAR WITH LID 60  
 VAS TWO FLOWERS 10 3/4" VERY FLAT ICE CREAM SHAPED BALL FOOTED BOWL, MINT & SUPER, RARE COLOR 225  
 B HEARTS & FLOWERS COMPOTE, FLAT FLAKE ON BASE, SUPER 50

BEVERLY HAWK, 100 COLONIAL LANE, LIMA, OH 45805 phone: 419-991-7107  
 M PEACOCK & URN ICE CREAM BOWL 275 M COUNTRY KITCHEN BOWL 135  
 IG PEACOCKS PLATE 300 B SAILBOATS SAUCE 50  
 B BLACKBERRY MINI-COMPOTE 55 B SAILBOATS COMPOTE 55

ROSEMARY MURRAY, RT.1 BOX 1360, IRVINGTON, AL 36544 phone: 205-957-2125  
 M ORANGE TREE PUNCH CUPS, HAVE 8, EACH 18.50 P MANY FRUITS PUNCH CUPS, HAVE 8, EACH 21  
 P GRAPE & CABLE PUNCH BOWL, BASE, N 400 M GOOD LUCK SHALLOW BOWL, N, BASKETWEAVE BACK 95  
 M PEACOCK & URN BOWL, BEAUTIFUL 95 M COSMOS & CANE SUGAR, NO TOP 48  
 M ORANGE TREE PUNCH BOWL TOP ONLY 140 B ORANGE TREE FRUIT BOWL, FOOTED, MINOR ROUGHNESS 200  
 M ORANGE TREE FRUIT BOWL, FOOTED 150 M HORSES HEADS 7 1/2" BOWL 100

CLIFFORD DECKER, #0#1 BOX 205, WHITNEY POINT, NY 13862 phone: 607-692-3762  
 IB NIPPON PIECRUST EDGE BOWL 160 RED LEAF CHAIN BOWL 450  
 G SINGING BIRDS BERRY SET, 7 PIECES. N 375 B GRAPE & CABLE BANANA BOWL 265  
 G WISHBONE FOOTED BOWL 65 M SWAN BOWL, AUSTRALIAN 70  
 P THUNDRBIRD BOWL, AUSTRALIAN 110 A HOLLY BOWL 70  
 AMBER LEAF SWIRL COMPOTE 50 M ACORN BURRS 7 PIECE BERRY SET 200

VALMER CROSS SR., PRATTSVILLE, NY 12468 phone: 607-588-6698  
 G CION DOT 6 1/4" BOWL 25 M OPTIC & BUTTON 12" BOWL 20  
 M VINTAGE BANDED MUG 25 M DUTCH MILL 8" PLATE 20  
 P GRAPE & CABLE TUMBLER, N 25 M LUSTRE & CLEAR 8" CELERY DISH 25  
 M LATTICE & GRAPE TUMBLER 25 M REX 6 1/2" PITCHER (HOACGA PATTERN #94) 100  
 M PREMIUM CANDLESTICK 15 M CHECKBOARD BOUQUET 8" PLATE 25

\* NOTICE \*

DID YOU MISS YOUR BULLETIN LAST MONTH??

\* NOTICE \*

IF YOU DID, YOU WERE PROBABLY ONE OF THE 150+ LATE RENEWALS RECEIVED BY THE BULLETIN SECRETARY AFTER JUNE 15TH.  
 WE HAD NO WAY OF KNOWING HOW MANY PEOPLE WERE PLANNING TO RENEW LATE AND ONLY HAD ABOUT 60 EXTRA JULY BULLETINS PRINTED.  
 IF YOU HAVE WRITTEN ABOUT THIS, YOUR BULLETIN IS ON ITS WAY, IF YOU HAVEN'T AND WANT A BULLETIN, WRITE TODAY!!!

PAYING YOUR DUES ON TIME NEXT YEAR WILL SOLVE THIS.

AL RETTKE, BULLETIN SECRETARY

**\*\* GLASS WANTED \*\* GLASS WANTED \*\* GLASS WANTED \*\* GLASS WANTED \*\* GLASS WANTED \*\* GLASS WANTED \*\***

DICK HATSCHER, BOX 261, WALNUT HILL ROAD, BETHEL, CN 06801 phone: 203-743-1468  
 "ANYTHING" HEARTS & FLOWERS

MORENE CAMPBELL, BOX 107, OCTATE, MN 87734 phone: 505-666-2237  
 SCALES BOWLS OR PLATES, ANY COLOR EXCEPT MMG  
 GREEN PANNELLED DANDELION WATER PITCHER  
 BLUE BUTTERFLY & FERN PITCHER & 1 TUMBLER

BILLY G. HUGHES, 30 PARK STREET, FARMINGTON, MD 63640 phone: 314-756-3172  
 6 BLACKBERRY BLOCK WATER PITCHER  
 6 ACORN BURRS WATER PITCHER  
 6 BUTTERFLY & BERRY LID FOR SUGAR  
 6 ACORN BURRS PUNCH BOWL AND BASE  
 P SPRINTIME SUGAR BOWL  
 6 BUTTERFLY & BERRY BUTTER DISH

OMER SWEENEY, 28 ESMOND STREET, ESMOND, RI 02917 phone: 401-231-4108  
 P GRAPE & CABLE SWEETHEAT BOTTOM  
 M DIAMOND & SUNBURST WINE DECANTER AND/OR WINES  
 P GRAPE & CABLE PERFORME BOTTLE  
 M OCTAGON DECANTER WITHOUT TOP OR I WILL SELL MY TOP

Y. BAUDRY, 438 14TH AVENUE, TWO MOUNTAINS, QUEBEC, CANADA J7R 3W7 phone: 514-472-0830  
 B FINECUT & ROSES ROSEBOWL  
 M FINECUT & ROSES ROSEBOWL  
 P FINECUT & ROSES ROSEBOWL WITH FANCY INTERIOR  
 B FERN COMPOTE

REG K. DUNHAM, BOX 354, JACKSONVILLE, IL 62650 phone: 217-243-5489  
 WANT -THE FOLLOWING PEACOCK & FOUNTAIN PIECES:  
 ANYTHING IN GREEN; COMPUTES IN M, AQ, A OR P; PUNCH BOWL TOP IN M; WATER PITCHER IN EB; WATERSETS IN A OR P;  
 SUGARS, CREAMERS & SPOONERS IN A OR P; ANY WHINSEYS

DELOURIS M. CRAFT, 702 BRADLEY DRIVE, BLOOMINGTON, IL 61701 phone: 309-662-3610  
 LID FOR AN ANETHYST GRAPE & CABLE POWDER JAR

M TED SHEIBLEY, 304A HILLCREST DRIVE, NEW CUMBERLAND, PA 17070 phone: 717-938-6417  
PEACOCK & CABLE SMALL SIZE PUNCH BOWL  
\*ANY\* PEACOCKS ON FENCE PIECES

WM. CROWL, 2835 HOLLYWOOD BLVD., HOLLYWOOD, FL 33020 phone: 305-921-6009  
PO FRUIT SALAD PUNCH BOWL BASE  
RED REGAL IRIS G.M.T.W. TOP

M/M STEVE CHAMBERS, 5926 DUNN AVENUE, SAN JOSE, CA 95123 phone: 408-972-0124  
1B OR GREEN PEACOCKS PLATES  
\*ANY\* PEACOCK @ FOUNTAIN PUNCH SET  
WIDE PANEL EPERGNE PARTS: GREEN SIDE LILY OR FULL SET OF LILIES IN AMETHYST

JAMES W. MOORE, 300 MERCER STREET (10A), NEW YORK, NY 10003 phone: 212-254-6468/6407  
M ORANGE TREE PUNCH BASE  
B,G,W PETAL & FAN LARGE BOWL  
\*ANY\* WILD STRAWBERRY LARGE BOWL  
M,G GRAPE & CABLE MASTER ICE CREAM BOWLS  
6 GRAPE & CABLE PUNCH BOWL TOPS FOR EITHER SMALL OR MEDIUM SIZE, HAVE BASES

RAY HITCHCOCK, RR1 BOX 301, WINTERSSET, IA 50273 phone: 515-462-2074  
P IMPERIAL GRAPE 9" PLATE  
B GRAPE & CABLE STIPPLED CRACKER JAR BOTTOM  
M,W,A DAHLIA BUTTER TOPS (OR I WILL SELL THE BOTTOMS)  
\*ANY\* FENTON'S BUTTERFLY ORNAMENTS EXCEPT MARIGOLD OR VASELINE

CLIFFORD DECKER, RD#1 BOX 209, WHITNEY POINT, NY 13862 phone: 607-692-3762  
G,I,G,EB,M HEARTS & FLOWERS BOWLS  
\*ANY\* EMBROIDERED MUMS BOWLS EXCEPT EB & M  
EB,G,P PEACOCK & URN MASTER ICE CREAM BOWLS

DENNIS KECK, 126 CHERRY STREET, PUNXSUTANNEY, PA 15767 phone: 814-938-7426  
6 SPRINGTIME BUTTER LID  
G MLSB6 CHERRIES SUGAR BASE  
M WREATH OF ROSES PUNCH BOWL BASE  
P GRAPE & CABLE BUTTER BASE  
W SINGING BIRDS MUG

6 MLSB6 HOBNAIL BUTTER BASE  
6 VINTAGE EPERGNE BASE, SMALL SIZE  
6 INVERTED STRAWBERRY POWDER JAR LID  
M GRAPE & CABLE COOKIE JAR LID  
1B SINGING BIRDS MUG