

H.O.A.C.G.A.  
BULLETIN SECRETARY  
AL RETTKE  
14226 East 143rd Lane  
Burnsville, MN 55337

=====  
FIRST CLASS MAIL  
=====

FREE TABLE FAVOR MUGS!

ALL MEMBERS RECRUITING AT LEAST ONE NEW  
MEMBER INTO THE CLUB DURING THE MONTH OF  
OCTOBER WILL RECEIVE A TABLE FAVOR MUG FREE!

THE BOARD OF DIRECTORS

\*\*\*\*\*

SEPTEMBER 15, 1984

S	M	T	W	T	F	S
		1				
2	3	4	5	6	7	8
9	10	11	12	13	14	15
16	17	18	19	20	21	22
23	24	25	26	27	28	29
						30



## Heart of America Carnival Glass Association Inc.

---

Membership June to May  
\$20.00 per couple or single

---

Published the 15th  
of each month

### PRESIDENT

Cooley Miller  
7605 N.W. Eastside Drive  
Kansas City, MO 64152  
816-741-4635

### VICE-PRESIDENT

Diane Treff  
13646 Leavenworth Road  
Kansas City, KS 66109  
913-721-2917

### TREASURER

Karen Engel  
35292 Oak View Drive  
Brownsville, OR 97327  
503-466-5989

### SECRETARY

Lucile Britt  
3048 Tamarak Drive  
Manhattan, KS 66502  
913-539-1933

### BULLETIN SECRETARY

Al Rettke  
14226 East 143rd Lane  
Burnsville, MN 55337  
612-432-7489

All monetary figures quoted are in U.S. dollars.  
Please make checks for dues payable to H.O.A.C.G.A.  
and send them to the secretary as listed above.

## H.O.A.C.G.A. AUGUST MONTHLY MEETING

At 2PM August 26, 1984, President Cooley Miller called the meeting to order. He then welcomed M/M Barker of St. Joseph, MO to the meeting. The minutes of the July meeting were read and approved as read. President Miller gave the Treasurers report as forwarded to him by Treasurer Karen Engel. It was accepted as read.

Due to the absence of John Britt, souvenir chairman, President Miller gave the souvenir report. He displayed diagrams of the prospective 1985 souvenir, the first of a series of four bells. The color will be red, the pattern Circle Scroll with a portrait of Harry Northwood. Each succeeding years bell will have a different portrait. There was some discussion as to where the club logo should be placed on the bell. A suggestion was made to either put the logo on one of the three scroll positions or to run the HOACGA lettering up the stem of the bell and have the horseshoe and whip below. Another suggestion was to keep all the bells in the series red. President Miller reported that he and Mr. Britt and Mr. Fenton all seemed happy about the prospective souvenir.

The convention report was given by President Miller, due to the absence of George McGrew. The Holiday Inn-KCI Airport still remains the best possible location for our convention. There are no Holidomes in the local area that are able to accommodate us. The KCI Holiday assured us that the room rates will only increase \$2 (from \$38 to \$40). This hotel is presently undergoing remodeling and the top two floors have already been completed. The banquet room and bar area will have a permanent wall not a moveable partition as it was last year. They have also agreed to let us cater our own Saturday night meal and arrange entertainment which is something none of the other area hotels will agree to.

Vice-President Diana Treff opened discussion concerning October being National Carnival Glass Month. She suggested the Club do something in recognition of the month. She suggested that each member recruiting a new member during October receive a table favor mug. She remarked that this would decrease our inventory, create an incentive to recruit new members, and thank those who are actively keeping our club alive. Marge Miller made a motion to award each established member who recruits a new member during the month of October a table favor mug. This award is limited to one table favor mug per member. Anna Belle Vaughan seconded the motion, it was voted on and passed.

A motion was made by Robert Grissom that those members who contribute to the HOACGA Notebook in the future receive an insert in appreciation. The motion was seconded by Diana Treff, voted on and passed.

Diana Treff then announced that the program for September would be mail, photographs, etc...from our out of town members and a program to be given by Charles and Anna Belle Vaughan on their collection of bon-bons. This months program was a show & tell of sorts, members brought glass that they purchased at the convention or since. The next monthly meeting to be September 23, 1984 at the home of Charles & Anna Belle Vaughan at 914 8th Street, Baldwin City, Kansas 66066. the meeting will begin at 2PM.

DIANA TREFF, VICE-PRESIDENT

\*\*\*\*\*



**\*\* SOWERBY CARNIVAL GLASS \*\***

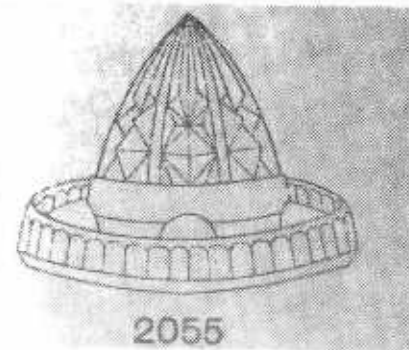


LEMON SQUEEZER  
Pattern #2176, Previously Unlisted

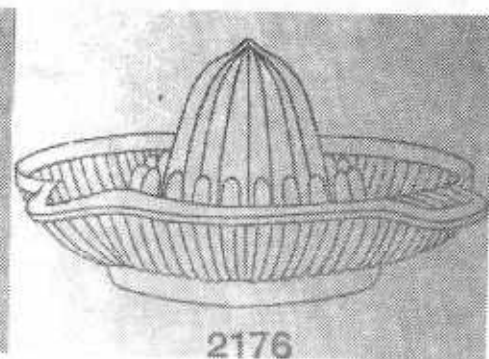
This domestic item presents few problems other than a suitable name. In the UK what would be called a juice reamer in the USA is called a squeezer! It is hoped that this will amuse North American collectors and also serve as a reminder of its transatlantic origin.

Sowerby only made two lemon squeezers and they are both shown here in an extract from an 1895 catalogue. The moulds for item 2055 have long since vanished but those for 2176 were still usable into the 1920's when flint (crystal) squeezers were still being produced. How many were given a marigold finish is not known but one must conclude that this rather humble object is rare. It is a very good design and works extremely well catching the pips on the prominent prongs with ease and efficiency. How these fingers have all survived intact for over half a century is another factor to consider when trying to work out the survival rate.

Are there any other Carnival reamers of this type? I have been unable to locate any mention of any but would be very pleased if someone could send a picture or note about anything similar to the Bulletin Secretary, Al Rettke, so that we all could share it.



2055



2176

This is hardly one of the most attractive pieces of Carnival ever made but it does have a very good finish and has a curiosity appeal to those who enjoy exploring the quiet backroads of Carnival history. This mould DID prove troublesome and a close look at all those spikes will show why the top of the squeezer was altered by gouging out the fingers and merging them into four curved flares. This made life a little easier for the press operators and from 1927 onward, model 2176 went on for a while in its new form and was also made in a smaller version. It is not known whether or not these recut versions were iridised.

Copyright 1984, RAY NOTLEY

\*\*\*\*\*

<<< A MEMBER COMMENTS ON PACIFIC N.W. CONVENTION >>>

Cooley and I went to the Pacific Northwest Carnival Glass Club convention during August 9-11. IT WAS REALLY GREAT!! They certainly know how to do things up right.

On Thursday night they had a picnic at a nearby park. DOUG ENGEL furnished the salmon and FRED GARCIA & KEN OSBORN helped him prepare it. Members brought other food and what a treat it was! Thursday night TOM SPRAIN put on a program on old and reproduction tumblers, it was very interesting. Slide were shown of a vase collection, there were many I had not seen before. Later a panel discussion was held. On Friday they had a luncheon and MARIE McGEE was the guest speaker. She was very enjoyable.

Saturday morning, TOM BURNS held the most enjoyable auction I have ever attended. I was presented an award which I shall always remember!! The banquet was Saturday evening and the food was very good. JOHN & LUCILE BRITT were the speakers and their program was very interesting and educational. They had a lot of beautiful glass.

KAREN ENGLE, their Vice-President and HOACGA Treasurer was the convention Chairman and she did a great job. You should all try to make the PNNCGC convention some time, it will be worth it!

**OCTOBER 6-7**

**CANADIAN CARNIVAL GLASS ASSOCIATION'S CONVENTION**

Held at the Conestoga Inn, Kitchner, Ontario. Banquet on Saturday with William Heacock as speaker. Auction date has been changed to Sunday because of a collection that was just consigned. Contact: Janet Knechtel, R.R. #1, Breslau, Ontario, Canada. Phone: 519-648-2696.

**OCTOBER 19-21**

**AIR CAPITOL CARNIVAL GLASS CLUB CONVENTION**

Ray Notley, banquet speaker. Airport Sheraton Inn, 5500 W. Kellogg, Wichita, KS 67209 phone: 316-943-2181.

**OCTOBER 26**

**WOODY AUCTION, ST. LOUIS, MO.**

Selling a good collection of Carnival Glass Friday evening. Brochures will be out later.

**AIR CAPITAL CARNIVAL GLASS CLUB**

We had a great turnout this month for the August 12th meeting, there were 16 members and 3 guests. After our meeting we had a covered dish supper and some members talked about pieces they had just bought and showed them to the group. We have recruited 7 new members this month and would like to welcome all of them.

We have received several reservations for our October convention, remember, you need not be a member to attend and everyone is invited. If you need more information, contact the Secretary, Don Kime, 1202 W. 4th St., Haysville, KS 67060. We have sent several letters with information on the convention. We are using pre-registration this year and would like for you to send your reservations in as soon as possible.

Our next meeting will be in Kansas City on September 9th and we are looking forward to making the trip.

Once again, I would like to remind you to come to our convention on October 19-21. Our guest speaker will be Ray Notley from London, England and we know you will not want to miss hearing him. SEE YOU THEN!

DONALD E. KIME, ACCGC SECRETARY

The second Annual General Meeting and Open Day of the thriving UK Society took place on August 18th. The morning events were in Broadfield Glass Museum with members selling and exchanging many hundreds of pieces of glass. Everyone enjoyed the marvelous glass in the Museum and also watched glass being made by the OKRA group who operate a small glass house in what was the stables of this old mansion. A glass cutter also works here and many members had glass engraved as souvenirs.

The exciting and crowded morning was followed by lunch for fifty members at a nearby hotel. Other members enjoyed snack lunches and drinks in the lounge bars. All members then assembled for the A.G.M. with its reports by officers and election of the ongoing committee, etc. Various aspects of the Society were discussed in true democratic manner. This was followed by a slide lecture on the life and glass of John Northwood given by Charles Hajdeach, Director of Broadfield House Glass Museum. This was a fascinating insight into the background of Harry's early life and influences. There was a great deal of information to think about. Charles also made the official public announcement about the acceptance of the Notley-Lerpiniere Collection for permanent display at the Museum. We then all enjoyed a light hearted chat-chat and show and tell session with some splendid "mystery" items. One member casually produced a very lovely Northwood GRAPE & CABLE banana bowl in PEARL CARNIVAL. At this stage, it was felt that this was a perfect end to a day spent in the birthplace of Harry. We feel sure that he too would have enjoyed this day. All members then had a farewell drink and wended their ways home very tired, but looking forward to next years A.G.M. which if all goes well, will be extended overnight.

MAVIS KIRK, NATIONAL ORGANISER  
CARNIVAL GLASS SOCIETY, UNITED KINGDOM

\*\*\*\*\*

WHAT HAVE YOU DONE TO PROMOTE CARNIVAL GLASS?????????

August 22, 1984

## California Teenager to Speak on Carnival Glass

Oceanside, Ca. — Thirteen year old Rusty Shupert from Vista, California has been collecting carnival glass since she was 10 years old. The beautiful color was what first fascinated her. With time and knowledge she became aware of the many patterns involved. At thirteen, Rusty has about 150 pieces of carnival glass. Most of her paper route money is spent on carnival glass or books on the subject.

Rusty is a member of various carnival glass clubs and enjoys meeting and discussing her collection with other carnival glass collectors. "I always learn something from everyone and enjoy the letters and calls from time to time," she says.

Armed with a world of information and excitement, Rusty will share her knowledge with anyone wishing to come to Oceanside, California's Antique Adventure on September 15. She will speak on the subject of carnival glass and will discuss the various manufacturers, era in which it was produced, how it was produced, patterns and value.

For more details contact Jean Verbanic, 4107 Jonathon St., Oceanside, CA 92056.

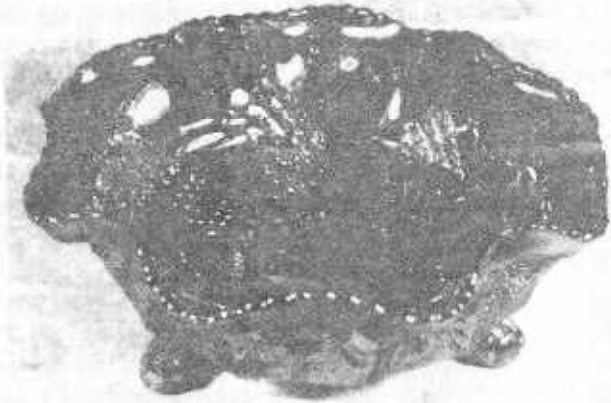
This appeared in

**THE ANTIQUE TRADER**



# Carnival Cameos

BY DONALD MOORE



FENTON'S BUTTERFLY & BERRY NUT BOWL

It was thought originally that the amethyst nut bowl (shown here on the right) was made from the master Butterfly & Berry bowl, even though the inside of the nut bowl carries no pattern. It has since been discovered that it was shaped from the Fan Tail bowl shown on the left. This bowl, you will recall, carries Butterfly & Berry as an exterior pattern.

The Fan Tail bowl is somewhat smaller than the Butterfly & Berry master and matches the size of this nut bowl. It was no big deal to substitute a non-patterned mold plunger for the interior & still use the more elaborate exterior part of the mold. The nut bowl is rare, only two or three are known. The one shown here brought \$530 at a Burns auction in October of 1980.

\*\*\*\*\*

THE FOLLOWING IS FROM BURNEY TALLEY, ALBUQUERQUE, NH:

A brief note on some of my recent "finds" - an Ice Blue ORIENTAL POPPY pitcher & tumbler, and an Ice Blue GRAPE ARBOR 5pc set, both are real beauties. Also recently acquired a Purple HATTIE chop plate (gorgeous), a Ice Green POPPY SHOW bowl and an Amber STAG & HOLLY 11" ice cream shaped bowl. A few of the items were not bargains, but I am happy to add them to my collection.

Regarding the article by the Mitchells, I also have an Aqua Opalescent VINTAGE 8 1/2" bowl with the same ribbon candy edge as shown in their article. Found mine locally.

\*\*\*\*\*

\*\*\* AN IMPORTANT ANNOUNCEMENT \*\*\*

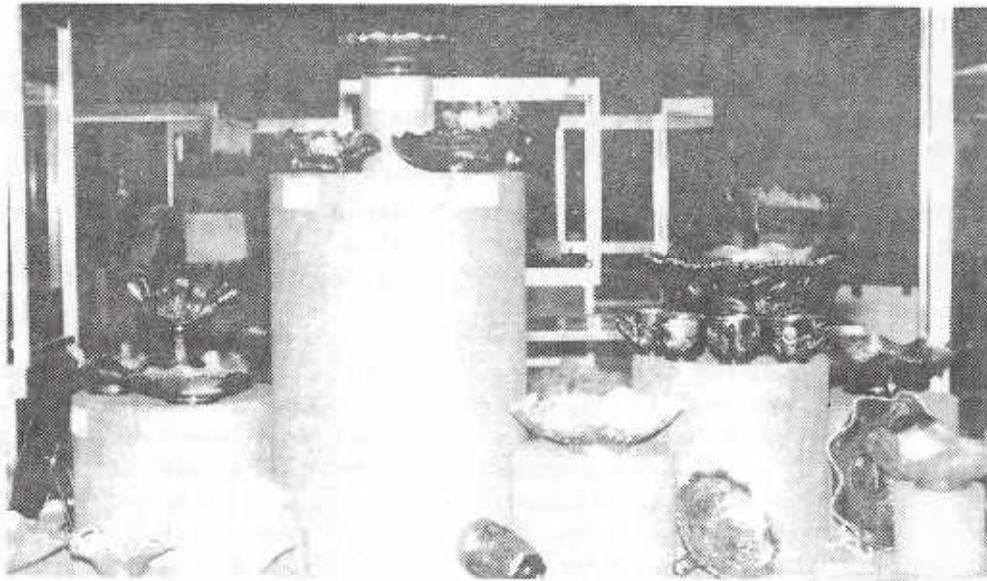
THE NOTLEY-LERPINIÈRE COLLECTION OF CARNIVAL GLASS, part of which is touring the UK, IS TO HAVE A PERMANENT HOME. It has been offered to, and accepted by, Broadfield House Glass Museum at Kingswinford in the heart of the Stourbridge glass making area in England.

The first 800 pieces will be on display in a phased programme over the next few years. Special cases will have to be made to accommodate the special needs of a glass that has both rich body colour and dazzling iridescence. This is a full logical collection running in sequence from the early glass of Fenton to the new, reproduction and souvenir glass.

Kingswinford is the birthplace of Harry Northwood and the museum is filled with glass made by his relative. Harry was trained in this area and his father is arguably one of the great glass men of all time. His cousin Tomas Dugan was from this area as well as his wife and Percy Beaumont who went on to own his own glassworks in the USA. The very strong connections between Stourbridge and American Carnival Glass will be emphasised and indeed can be seen in the magnificent displays. Some of the Northwood glass to be included is shown in the photo below which shows PEACOCKS items with various shapings and finishes including a pie-crust edge Aqua-opal bowl. One of the many HEARTS & FLOWERS plates is in the background as well as a nice white WISHBONE bowl.







Fenton is given pride of place as originators of Carnival and many examples are included of the interesting and out of the way colors and shapes that they made with such skill. On top of the central column in this photo are a few of the Red pieces including a small PANTHER, GRAPE & CABLE, PEACOCK TAIL, and a rosebowl in ORANGE TREE. Various white examples are also shown. A very splendid Peach Opal PEACOCK & GRAPE bowl is also featured here with the BEARDED BERRY exterior looking as if the berries had been sprayed white. To the extreme right is an Ice Blue PERSIAN MEDALLION bon-bon and an Aqua-opal DRAGON & LOTUS bowl. There is also a cobalt WREATH OF ROSES punch set and a Green DRAGON & STRAWBERRY bowl. This is just a sample of the glass from Fenton.

All prime American factories are represented even if just with a few examples. There are many unlisted curiosities such as the handled bon-bon seen here in STARFISH by Dugan.



Imperial and Dugan/Diamond are fully represented with the wonderful triple doped items from the former being fully balanced by the delicate peach opal items from the latter. Millersburg, Westmoreland, Cambridge and US Glass are all represented.

Over the years, various items have been given or presented to Ray Notley and these will be shown with the name of the person who gave them. It is nice to know that pieces given by the following will all be shown in the museum long after we all are what we hope will be pleasant memories. Hope you remember what it was you gave! Grace & Byron Rinehart, Bill Edwards, William Heacock, Floyd & Cecil Whitley, Roland Kuhn, Donald Kime, Frank Fenton, Winnie Brim, Flo Cunningham, Dorothy Taylor, Fred & Shirley Smith, Ronald Inch, Michael Blicq, Peter Prior, Don & Marion Doyle, the Guthries of Wichita.

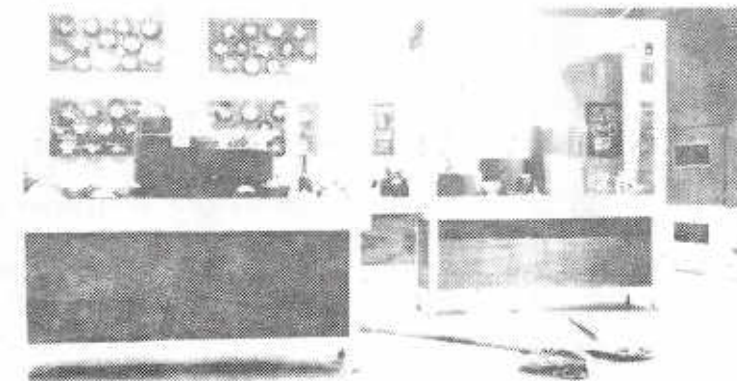
Naturally Carnival made outside the USA will be well represented and much unusual and interesting glass from the UK, Czechoslovakia, and Australia will be on display. Jewelry and fashion items have not been forgotten.

All in all this will be a comprehensive survey of Carnival Glass and there will be NO indication of rarity or value. Even the novice collector will be able to visit the museum and feel pleased that the most humble of Carnival items are set side by side with valuable and much sought after rarities. This is a balanced and neutral collection which is an acceptable and uncommercial display of a much misunderstood and misrepresented glassware. Carnival is an historical glass and it is hoped that this acceptance of it by the academic world will lead to an end of its neglect.

The Museum at the Fenton Factory, the Fenton Factory itself and Broadfield House Glass Museum will now become the public focus of Carnival Glass appreciation. Visitors to the UK should obviously include Kingswinford in their itinerary for next year. More details will be sent later.

RAY NOTLEY, SUFFOLK, ENGLAND

The pictures here are from the glass as it was shown recently at Sunderland and it is hoped that the picture with the broom and shovel will amuse. As the last remnants of packing were swept away through one door, the first visitors arrived through the other.



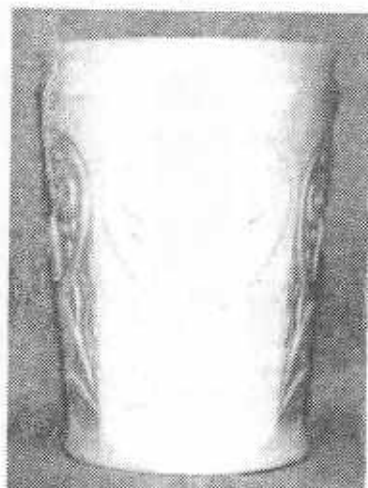


EDUCATIONAL TUMBLER SERIES  
by John & Lucile Britt



WISHBONE - A NORTHWOOD SUPER STAR

The "Wishbone" is one of Harry Northwood's super fine tumblers. While it is certainly not common, it is not real hard to find either. In other words, it is much easier to find than are such tumblers as Multi Fruits & Flowers, Morning Glory, Cone & Tie, Checkerboard, Hobnail, Fentontia Fruit, Lily of the Valley and a number of others that fall into this rare category. On the other hand, you will find it much harder to come by than the more commonly found tumblers like Imperial Grape, Fashion, Octagon, Grape & Cable, Butterfly & Berry, Peacock at the Fountain, Stork & Rushes and Lustre Rose, just to name a few that would be classed in this most common group of tumblers. Keep in mind, however, that rare color tumblers have been found in most of these common patterns which includes an amethyst Butterfly & Berry, a white Lustre Rose, pastel green Grape & Cable, purple Fashion or a smoke Octagon, which are just a few that come to mind in this class. There are a good many others that fall among this group.



WISHBONE TUMBLER IN PEARL CARNIVAL

With the exception of the extremely rare iridised custard or so called "Pearl Carnival" tumbler that was found by Dick & Ema Tilton in an Atlanta, Georgia flea market, the only colors that have been reported in the "Wishbone" pattern in carnival glass tumblers, are marigold, purple and green. Different shades or tones of these vivid colors can be found, however.

"Wishbone" tumblers are of standard size and were made in the same eight panelled style as were a group of other Northwood tumblers which includes Singing Birds, Springtime, Greek Key, Oriental Poppy and Dandelion.

The "Wishbone" pattern is the only pattern in carnival glass, to the best of my knowledge, that features the orchid flower. I personally wish that it had been called by that name, but since

it was named "Wishbone" and called that by most collectors today, "Wishbone" it is. The late Mrs. Rose Presznick named it the "Melinda" pattern in her interesting series of carnival glass pattern books. This super "Wishbone" pattern was also made in a very beautiful epergne. It is very collectable today and in addition to the colors that were made in the water set, the epergne is also known in white, pastel green and pastel blue. I am wondering how long it will be until someone finds one of these epergnes in aqua opal. Bowls in the "Wishbone" pattern come in two general shapes, flat and footed. The bowls are known in even a greater range of colors than are found in the epergne, which includes aqua opal, teal blue and pastel marigold. The fabulous aqua opal "Wishbone" footed bowl, in my opinion, is one of the most beautiful pieces of carnival glass that was ever made. The pastel green, pastel blue, white and cobalt blue are other very fine examples of rare colors in the footed bowls. Last but not least, the "Wishbone" pattern was made in two styles of plates. One of these is the footed bowl that has been flattened out into a plate. The other is a large chop plate. These chop plates are quite scarce in marigold and purple and it is extremely rare in green. As yet, only one example has ever been reported in the green color. This rare green chop plate was found by Osteen & Mary Lou Smith of Corinth, Mississippi and it is now a part of the Ron Kuhn and Don Kime collection of Wichita, Kansas. They have, what I believe to be, the largest collection of the "Wishbone" pattern in the United States.



It is unfortunate indeed that Harry Northwood did not choose to make the "Wishbone" water set in the pastel colors. But even so, it is one of our truly fine patterns, and we tumbler collectors will just have to enjoy our tumblers in the regular colors of green, purple and marigold.

This is entry #80 in this series on carnival glass tumblers.. Next month we will feature the extremely rare "Vintage Banded" tumbler.

JOHN & LUCILE BRITT

\*\*\*\*\*

FREE TABLE FAVOR MUGS!!!!

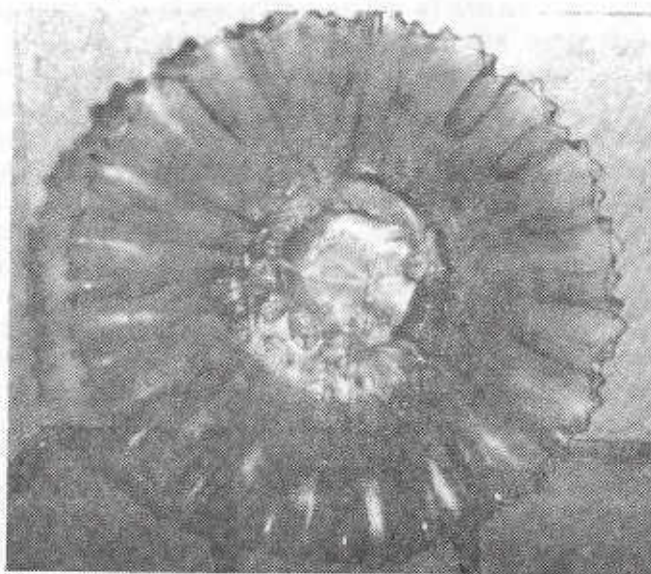
ALL MEMBERS RECRUITING AT LEAST ONE NEW MEMBER INTO THE CLUB DURING THE MONTH OF OCTOBER WILL RECEIVE A TABLE FAVOR MUG. WE APPRECIATE YOUR SUPPORT.

THE BOARD OF DIRECTORS

\*\*\*\*\*



RARITIES and SELDOM SEEN  
by Ivan & Betty Mitchell



WHITE "GOOD LUCK" BOWL--NORTHWOOD

This bowl is 8 1/2" and has a piecrust edge. The iridescence is outstanding. The bowl is on a collar base. It appears to have a small trace of Clambroth in the base. Several persons knowledgeable on Carnival have said they thought it was a Clambroth bowl, however, other knowledgeable collectors have said it was White.

O. Joe Olson previously owned this bowl and he told me it was White. Since O. Joe was one of the pioneers in Carnival Glass, I place a lot of confidence in his judgement. When held up to a strong light, it appears White, so White it shall be until someone convinces me otherwise.

I know of only one other of these bowls. When they are seen side by side, they appear exactly alike. This other bowl resides in St. Louis County, Missouri. The price for one of these bowls in my opinion would be the \$600-700 range.

\*\*\*\*\*

ABOUT THE LARGE MARIGOLD INSULATORS...

I have seen several out here at flea markets priced anywhere from \$15-20. The small ones are quite available too. Everyone says they were made around 1910-20, but as far as being sure, I just don't know as I have never seen anything in writing. They are quite interesting though.

I surely do enjoy reading all of the articles and am sorry I cannot attend some of the meetings. I just say surprise you sometime.

MEADOW KNIGHT  
WALLA WALLA, WA

\*\*\* THE A.C.G.A. CONVENTION \*\*\*  
by Grace & Byron Rinehart

The motel at Canandaigua, NY was one of the prettiest places we've been for a convention, it was right on the lakeside. The whole convention was just great, thanks to the New York Club. Mr. RICHARD OTT made hundreds of arrowheads for everyone attending. They were all numbered and later used for door prize drawings. He also carved out several tomahawks for gifts for the menfolk. It was "Indian Territory" years ago and that these were used by some on their displays and some came dressed in Indian attire--so colorful and appropriate.

We got settled down in our room and got all the Kitten carnival out to do the display - called it "Cabbage Patch Kittens" because it was complete with a cabbage patch doll. That took the rest of the day and then we got up on Wednesday to register and go visiting. Lots of pretty carnival to see and the displays were really special, as usual. On Thursday, it was the "Welcome" with each person standing for recognition then there was the preview of the auction carnival. The auction went well with the highest item being a Inverted Strawberry water pitcher at \$2000. Friday was the business meeting with the election of the new officers: President WOODY FUNK, Vice-President EMMA TILTON, RUTH SCHINESTUHL replaces GRETTA CLARK as Treasurer. Gretta served many long years and did a superb job, many thanks to her. Later, Ruth gave a very interesting talk on Pastels.

The banquet Friday evening was very good, the whiskeys were auctioned off and the highest one was the pretty red cruet. It went to the BOB VININGS @ \$300. The afgan donated by GERRY BROWN of California was sold for \$100. It truly was a lovely work of art with ACGA embroidered on one side. MYRNA WHITE of Iowa donated a pretty quilt to raffle off at about \$150. Many thanks to them both. The display awards were given out and we were surprised our Kittens came in 3rd place with the great competition they had. WOODY FUNKS were 1st with their "BLUE" and the HAROLD COXS 2nd with their spectacular display of ice cream sets. The trophies were made at no cost to the club by GARY REYNOLDS and were just beautiful, carved from wood with a brass plate engraved like the God & Home tumblers. There were eight given out, they must have been so much work and we do appreciate them. There was a very good Blue Grass band for entertainment. Some of our members are very good dancers and it was such fun to watch them.

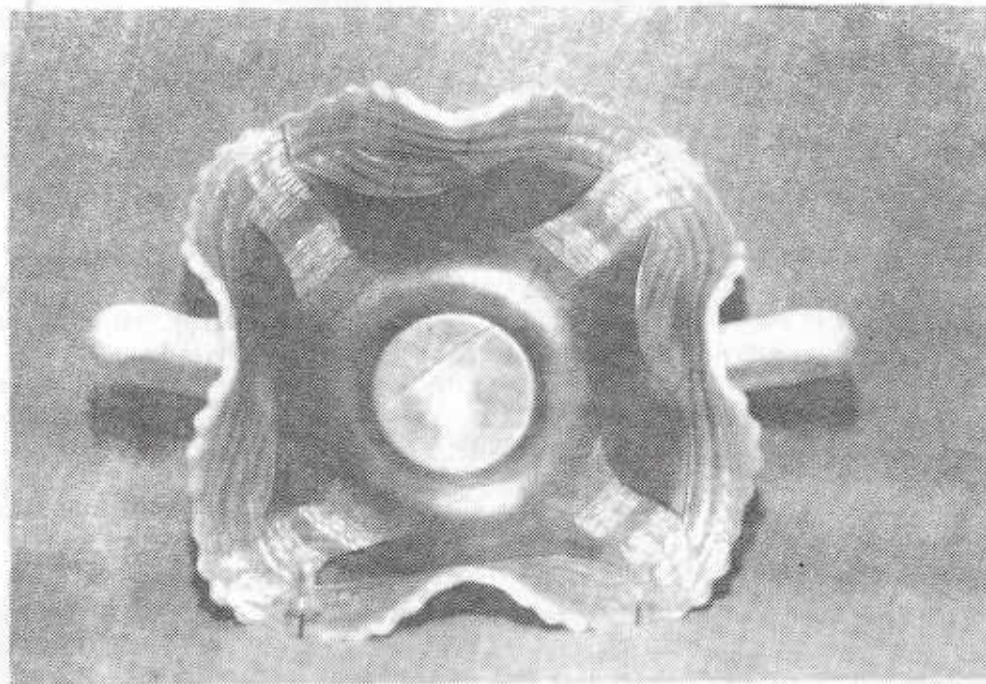
The next morning was the good-bye breakfast and awards for special services. Recognition was given to MARGRET DICKINSON of Australia for coming the longest distance. We left at 10AM for Canton, Ohio to visit relatives. We did stop at a few flea markets but found no rarities like the SCHLEEDES of NY. We understand that at a Medina, NY flea market they found a Amethyst Millersburg Hobnail cuspidor in the large size that has not been seen before. A true beauty it is and everyone wanted it, but it was not for sale. We also heard that the VIETTIS of Michigan found the cutest little Kittens cuspidor at a local auction. What luck that was!! Keep looking folks, those things are still out there.

August is a busy month, school reunions, auctions we can't attend and the Fenton Glass convention at Marietta and Williamstown on Aug. 16-18. We hope to get there for a day as they have lovely displays to see, dozens of flea markets everywhere, lots of carnival friends belong to that organization so we look forward to that too.

\*\*\*\*\*



PICTORIAL PATTERN PARADE  
by John & Lucile Britt



Rare PRAYER RUG Bon-Bon

The "Prayer Rug" pattern is described and illustrated in Harting book 8 page 45. It is also shown in color in Bill Edwards book on the early years of Fenton Carnival Glass. Both authors list it as being rare. It was made by the Fenton Art Glass Company and is listed only in the two handled bon-bon that is pictured above.

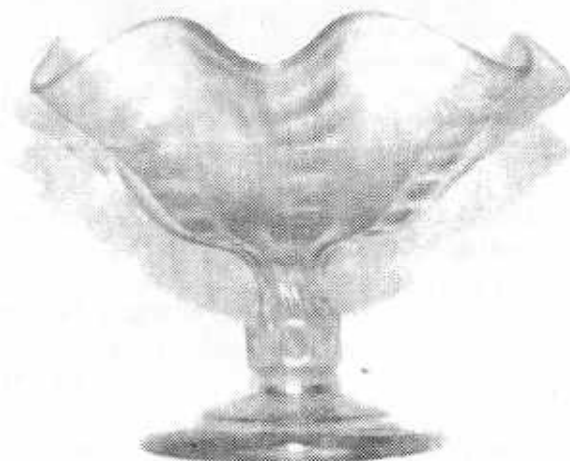
It has a beautiful iridised marigold overlay on true custard glass. This base glass is different than the marigold overlay milk glass and moonstone pieces. It is also decidedly different from the peach opalescent glass that was made mostly by Dugan-Diamond and in somewhat lesser amounts by Fenton and Westmorland. You will occasionally see these "Prayer Rug" bon-bons in custard without the iridescence, but to find one in carnival glass is a rarity.



PANELLED PALM MUG

"Panelled Palm" is a rare little mug that is not listed in any of the carnival glass books, to the best of my knowledge. This pattern was made by the old United States Glass Company. William Heacock and Fred Bickenheuser illustrate the "Panelled Palm" pattern in their book 5 - page 43 "U.S. Glass from A to Z". They state that the pattern was made after 1906, which would indicate that the pattern was produced during the carnival glass era.

This is only the second one of these "Panelled Palm" mugs that I have seen in carnival glass. They are of a nice marigold color with fine iridescence. The mug is a little smaller than are those of the Singing Birds mugs and stand 3 3/8 inches tall. A twenty point star figure is pressed into the bottom side of the base. The one shown above is from the L.L. & Jane Dinkins collection of Houston, Texas.



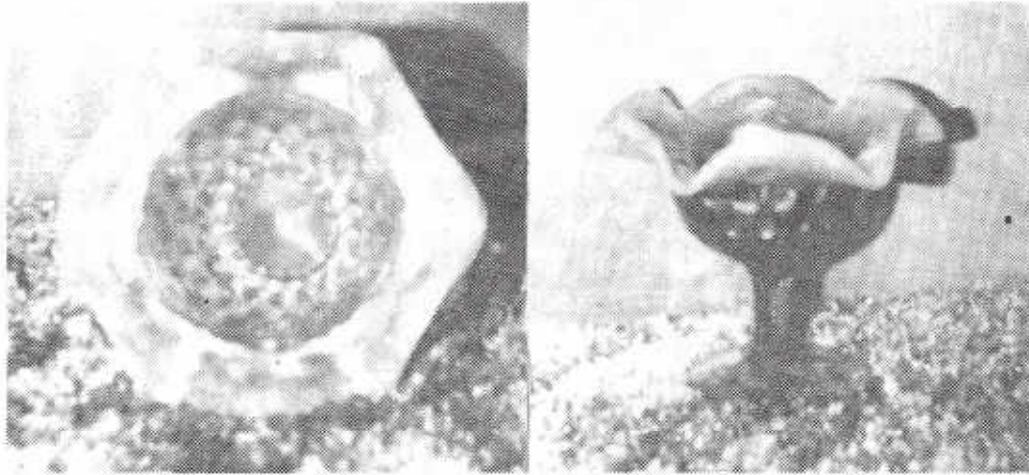
RARE COIN SPOT GOBLET (left) and COMPOTE (right)



The "Coin Spot" pattern is shown and described in Hartung book 2 - page 32. She lists it as being made only in a compote. You usually see these "Coin Spot" compotes in the peach opalescent color, but occasionally you will observe one in amethyst or marigold. One of the prettiest pieces in this pattern, that I have seen, is the compote in what is known as Celeste Blue. It has a stretch effect and is very beautiful for such a simple pattern as "Coin Spot". It is very rarely found in the Celeste Blue color, however. When I first observed the above piece I was greatly surprised for two reasons. First, I had never seen or heard of a goblet in this pattern. Secondly, it was in a stretch type pastel green color which I had never seen in the "Coin Spot" pattern. This very unusual and rare goblet is from the Ray Reichard collection of Dallastown, Pennsylvania.

\*\*\*\*\*

A MEMBER WRITES:



I am enclosing two pictures of what I call an Ice Blue Opal COIN DOT compote. It has a 24 point rayed star base. I think it is old but would like an expert opinion on it and its value.

I also have two other pieces that I can't put a value on, a #270 compote in Olive Green and a COSMOS VARIENT bowl in blue. Thank you.

RALPH PASTORELLI, 1028 Jefferson Ave., Utica, NY 13501

\*\*\*\*\*

NEWS FROM TEXAS

Although the meeting of the Texas Carnival Glass Club was not scheduled until Saturday, members started gathering at the Ramada Inn in Waco, Texas about noon on Friday, August 17th. During the afternoon, rooms were open for visiting and selling glass. At 6:30, thirty-one members got together for dinner at a nice Greek restaurant near the motel. Arrangements for a private dining room had been made by ELEANOR & JACK HAMILTON. Later that evening, everyone gathered around the motel for more visiting.

The business meeting was called to order by President DON STALEY on Saturday at 10:00 AM. New members and first time attendees were welcomed. Reports were given on the ICSCA and the ACSA conventions. The club unanimously voted to give an Honorary Lifetime Membership to JODIE MITCHELL who was the organizer and first Research Editor of the Texas Club. Everyone expressed appreciation for her dedication to the organization.

The meeting was dismissed for a buffet lunch and resumed at 1:00 for an auction of glass that had been donated as a fund raiser for the Club. Our special thanks to all who made a donation. The next meeting will be held in Athens, Texas on November 4th. Arrangements will be announced in the next Newsletter.

JANE BROWN, SECRETARY

\*\*\*\*\*

NEWS FROM CALIFORNIA

The Southern California Carnival Glass Club met at Huntington Beach, CA for the quarterly meeting and luncheon. Officers for the year are Pres. CHARLES ADAMS, Vice-Pres. VALERIE LIGHT, Sec.-Treas. MOLLIE KEITH. 47 members attended this August 19th meeting. The program consisted of displays and discussions of "Accessories in Carnival Glass".

ANGIE CASH shared her first place award display of carnival purses, shown at the NORCAL Convention in June. Mr. GALATI described his collection of hat pins and beaded jewelry, DAVID MOORE brought his gorgeous purple Christmas Compote (formerly Mrs. HARTUNG's), Rose Tree bowl and a couple of his other favorite pieces. DEAN FRY spoke on the beautiful jewelry CHRIST HARNISH makes from broken carnival. CLINT ARSENAULT conducted the program this month and enthusiastically shared his and SHELLI's vast collection of carnival buttons, bottles, bangles and beads.

This was a lively meeting hosted by FERN & CAMILLE LEMIEUX. The raffle prizes were lovely white porcelain hatpin holders that had been hand painted in gold by Fern. Our door prize was donated by JOHN MUEHLBAUER of the Northern Cal. Carnival group. It was nice to have MABLE SPRAIN as a visitor. This nice lady affords lively conversation wherever she is!! Our next meeting will be held November 18th.

DIANE FRY

\*\*\*\*\*

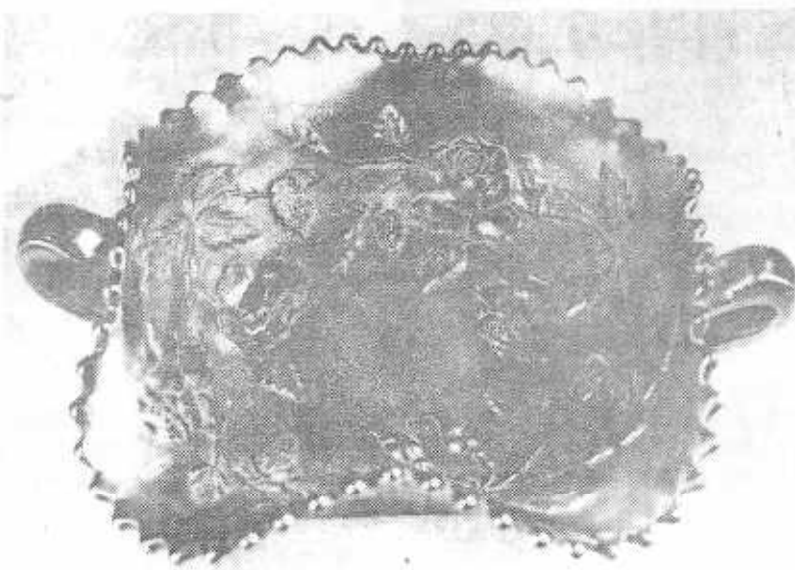


ORGANIZED CONFUSION

or

HOW PATTERNS GET MORE THAN ONE NAME

About a year and a half ago, I picked up a two handled bon-bon in Carnival Glass. The pattern was of roses on a stippled background and the piece had the BASKETWEAVE exterior pattern. It also bore the N in a circle. Not recognizing the pattern, I got out all my books on Carnival Glass patterns and started looking. When I did not find the pattern, I started over, and finally found a mention in Mrs. Hartung's books that an odd piece of WREATH OF ROSES would turn up signed N in a circle, while most of the other pieces were known to have been made by Fenton.



Desiring more information, I telephoned both Bill Edwards and Don Moore to ask about this piece. Bill Edwards said that since there were a few of these about, then they should be given a name to distinguish them from the Fenton pattern. When his fourth edition price guide came out, the piece was listed as "ROSE WREATH-(NORTHWOOD'S)".

Just two months previously, Bill Heacock had given it a name in his magazine, The Glass Collector. He had called it "BASKET OF ROSES".

Both authors had given the item a new name in an attempt to eliminate confusion amongst the collecting world. Instead, they created more. It remains to be seen which name will prevail.

Each of the three bon-bons known at that time were a different color. The one that Bill Heacock wrote about was blue, mine is amethyst, and a friend recently picked one up in marigold. Each is the only I have heard of in these colors. If any collector out there knows of others, please let us know through the newsletter.

LAWRENCE HARTNELL  
ONTARIO, CANADA

\*\*\*\*\*

POLICY FOR ADVERTISING IN THE H.O.A.C.G.A. BULLETIN

1. ALL ADVERTISEMENTS, ANNOUNCEMENTS, LETTERS OR ANY OTHER ITEM TO BE PRINTED MUST BE RECEIVED BY THE BULLETIN SECRETARY BY THE 1ST OF THE MONTH TO INSURE BEING PUBLISHED IN THAT MONTHS BULLETIN.
2. MEMBER FAMILIES MAY ADVERTISE 10 FOR SALE AND 10 WANT ADS PER MONTH.
3. ONLY OLD CARNIVAL GLASS ITEMS OR H.O.A.C.G.A. SOUVENIRS WILL BE PUBLISHED.
4. DAMAGE OR MANUFACTURING FLAWS SHOULD BE NOTED.
5. ALL FOR SALE ITEMS MUST BE PRICED, NO BID ITEMS WILL BE PUBLISHED.
6. A 5 DAY RETURN PRIVILEGE AT BUYERS EXPENSE PROVIDING IT IS NOT AS ADVERTISED.
7. ALL POSTAGE AND INSURANCE IS EXTRA, TO BE PAID BY BUYER.
8. ALL ADS MUST BE LEGIBLE, OR THEY WILL NOT BE PRINTED.
9. THE H.O.A.C.G.A. DOES NOT ACCEPT RESPONSIBILITY FOR THE ACCURACY OF ANY ADS.
10. THE BULLETIN SECRETARY RESERVES THE RIGHT TO EDIT SUBMITTED MATERIALS TO INSURE ACCURACY OR TO CONSERVE SPACE.

FOR ACCURACY OF DESCRIPTION, THE FOLLOWING COLOR KEY IS RECOMMENDED:

A--AMETHYST	G--GREEN	P--PURPLE
AMB--AMBER	HA--HONEY AMBER	PRL--PEARL-PASTEL ON MILK GLASS
AO--AQUA OPALESCENT	IB--ICE BLUE	PM--PASTEL MARIGOLD
AQUA--LIGHT BLUE-GREEN	IG--ICE GREEN	PO--PEACH OPALESCENT
B--BLUE	IGO--ICE GREEN OPALESCENT	R--RED
BO--BLUE OPAL OR BLUE OPAQUE	LAV--LAVENDER	RA--AMBERINA
CLM--CLAMBROTH	M--MARIGOLD	SM--SMOKEY
EB--ELECTRIC BLUE	MMG--MARIGOLD ON MILK GLASS	VAS--VASELINE

NOTE: IF YOU WISH TO DESCRIBE A PIECE AS LIGHT OR DARK, USE L OR D IN FRONT OF THE COLOR.

EXAMPLES:	AO	GOOD LUCK PLATE, ONE POINT BROKEN & REPAIRED	375.
	M	PEACOCK AT THE FOUNTAIN 7PC WATER SET, PITCHER HAS FLAKE	225.
	MMG	PEACOCK & GRAPE BOWL	360.
	LM	WISHBONE TUMBLER, HEAT CHECK	37.

IT WOULD BE GREATLY APPRECIATED BY EVERYONE IF YOU WOULD USE THESE CODES AS SUGGESTED.



OLD CARNIVAL GLASS LIBRARY

CARNIVAL GLASS RARITIES-A color line approach. Lists the top 10 rarities in each color-plus complete rarities price guide-40 pages of black and white pictures-special section on whimsies-\$8.50 pp. Also THE SHAPE OF THINGS IN CARNIVAL GLASS, 110 pages, 200 items in full color-\$9.95. Don Moore, 2101 Shoreline Drive, Apt 462, Alameda, CA. 94501.

CARNIVAL GLASS SERIES-by Marion T. Hartung. Each book has 100 different patterns-10 books in the series, books 1,2 and 3-\$3.00 ea, books 4 thru 10-\$3.50 ea. 1981-82 price guide-\$5.00 pp, Northwood Pattern Glass-clear, colored, custard and carnival-\$9.95, plus .50 postage. Order from Ione Henshaw, 903 East 6th Ave., Emporia, KS 66801.

CARNIVAL IN LIGHTS-A full color book on Carnival Lighting, including Gone With The Wind Lamps, Candle Lamps and shades-price guide included-\$11.95 plus postage, Helen Greguire, 103 Trimer Road, Hilton, NY. 14468.

CARNIVAL GLASS TUMBLERS-Author Richard Owens-order from Don Brown, Wallace-Homestead Book Company, 1912 Grand Ave., Des Moines, IA. 50303.

THE STANDARD ENCYCLOPEDIA OF CARNIVAL GLASS REVISED EDITION NOW AVAILABLE, many new photographs and expanded European carnival section-\$24.95 (with new price guide), NEW PRICE GUIDE includes eight color columns, size 8x11 - \$4.95, IMPERIAL CARNIVAL GLASS-THE EARLY YEARS-\$9.95, FENTON CARNIVAL GLASS-THE EARLY YEARS-\$9.95, MILLERSBURG THE QUEEN OF CARNIVAL GLASS-\$8.95, NORTHWOOD, KING OF CARNIVAL GLASS-\$9.95, Bill Edwards Author, Collectors Books, Paducah, KY.

CARNIVAL GLASS WORLDWIDE--by M. Quinton-Baxandale. 200 Colour Photographs \* Pattern Name Index \* Exclusive Research \* Clubs Worldwide Listed \* Order from: CARNIVALIA PUBLICATIONS, PO Box 1, LOSTWITHIEL, CORNWALL, L22 0YZ, ENGLAND US \$13.50 (surface mail) US \$15.00 (airmail) Payment with order please, by International Cheque or Money Order.

CARNIVAL GLASS--by Ray Notley, Shires Album # 104. ISBN 0 85263 637. Price is only \$3.55 including postage. Send to 7 Hills Books, 519 W. 3rd. Street, Cincinnati, OH. 45202

FENTON GLASS-THE FIRST 25 YEARS-144 pages, 72 in full color, more than 400 items pictured in Fenton's carnival and iridescent "stretch" colors, rare catalogue reprints (some in color), a complete history of the factory's early years, from 1907 to 1932, \$15.95 for softcover edition with price guide, \$20.00 for limited edition hardbounds. Order from the author, William Heacock, P.O. Box 27037, Columbus, OH. 43227.

"CARNIVAL GLASS - An Introduction to the Iridescent Pressed Glass Grandma had on her sideboard", Angela Hallam's 52 page fully illustrated paperback is NOW AVAILABLE IN THE U.S. for only \$2.95 ppd. Nancy Johnson, The Library, P.O. Box 37, Des Moines, IA 50301

CARNIVAL GLASS AUCTION PRICE REPORT-1984 Edition. This years edition will have approximately 4000 entries from major auctions in 1983. Single copy price is still \$8.00 US postpaid (for overseas delivery, add \$1.00). Order from: Al & Wendy Rettke, 14226 E. 143rd Lane, Burnsville, MN 55337

"Encore by Dorothy" books 1 and 2. A series of books on new reproduced Carnival Glass, giving information on the patterns and colors that are being reproduced. Price for each book is \$7.70 postpaid. Be sure to state which book you want. Dorothy Taylor, Box 11734, Kansas City, MO, 64138.

"CARNIVAL GLASS" educational brochure with color photographs. Available to interested collectors or dealers who wish to better describe to and inform the public about our glass. Free of charge from the American Carnival Glass Association. Contact Ruth Schinestuhl, P.O. Box 694, Absecon, NJ 08201.



\*\* GLASS FOR SALE \*\* GLASS FOR SALE \*\* GLASS FOR SALE \*\* GLASS FOR SALE \*\* GLASS FOR SALE \*\* GLASS FOR SALE \*\*

JOHN MIKKONEN, RR1 BOX 474F, SHAKOPEE, MN 55379 phone: 612-445-6098

A	INVERTED STRAWBERRY TUMBLER, P.H. ON RIM	125	M	POPPY SHOW BOWL, SLIGHT ROUGHNESS	85
B	PRISM BAND TUMBLER, ENAMELLED	25	G	OCTAGON TUMBLER, RIM CHIP	100
G	PEACOCK & FOUNTAIN TUMBLER, POLISHED BASE	65	B	PEACH TUMBLER	75
M	UNSHOD TUMBLER	15	M	CARNIVAL HOLLY BOWL, GREAT COLOR	50
G	CARNIVAL HOLLY BOWL, GREAT COLOR	65			

HARM WESTERHUIS, RR1 BOX 49, PLATTE, SD 57369 phone: 605-337-3631

M	GRAPE & CABLE BUTTERDISH	115	M	BUTTERFLY & BERRY BUTTERDISH	90
M	CARNIVAL HOLLY GOBLET, HAVE 6, EACH	17	P	GRAPE & CABLE FRUIT BOWL, PERSIAN MEDALLION INT.	135
PM	RIBBED LIGHT SHADES, HAVE 3, EACH	25			
P	WREATHED CHERRY WATER PITCHER, 3 TUMBLERS (2 WITH MINOR BASE CHIPS)	300			

A.O. CROMER, 1150 N. TOPEKA, WICHITA, KS 67214 phone: 316-262-1775

B	PEACOCKS PLATE, BEST OF COLOR	300	PH	PEACOCK & URN MASTER ICE CREAM BOWL	225
AD	LEAF & BEADS ROSEBOWL	250	AD	BEADED CABLE ROSEBOWL	250
AD	DRAPERY ROSEBOWL	225	AD	ALL THREE ROSEBOWLS PACKAGE PRICE	675
M	DAISY BLOCK ROWBOAT	150	A	DRAPERY TRI-CORNERED DISH, N	120

FAY KEMP, BOX 286, SALISBURY, PA 15558 phone AFTER 5PM: 814-662-2558

CLAM	SHRINER CHAMPAINES 1909-10-11, SET OF 3	250	B	CAPTIVE ROSE 9" PLATE	125
G	FLUTE TOOTHPICK HOLDER	65	P	STORK & RUSHES BERRY BOWLS 25 EACH OR ALL 5 FOR	100
M	DRAPERY BOWL, 9"	40	M	GOOD LUCK BOWL, 9"	75
M	TREE BARK 7 PIECE WATER SET	125			

DICK WETHERREE, 847 STAFFORD STREET, ROCHESTER, MA 01542 phone: 617-892-4420

P	WREATH OF ROSES 2 HANDED BON-BON	42	M	WILD ROSE OPEN LACE 3 FOOTED DISH, N	32
PO	STIPPLED FLOWER 7 1/2" TRI-CORNERED BOWL	45	G	EMBOSSED SCROLL PLATE, 9"	65
M	MARY ANN 2 HANDED VASE, SMALL BASE NICK	45	P	GRAPE & CABLE POWDER JAR, M, PERFECT & GORGEOUS	115
AMB	RIPPLE 9" VASE, FLARED TOP, A BEAUTY	65	B	PERSIAN MEDALLION LOW BOWL, BEARDED BERRY EXTERIOR	65
M	STORK & RUSHES PUNCH BOWL BASE ONLY	45	P	WISHBONE 8 3/4" 3 FOOTED BOWL	80

JOHN MUEHLBAUER, 7051 LA COSTA LANE, CITRUS HEIGHTS, CA 95621 phone: 916-355-2455 DAYS OR 916-723-2852 EVES.

AO	HEARTS & FLOWERS COMPOTE, BEAUTIFUL	325	M	N FLUTE TUMBLER, NORMAL FACTORY GROUND BASE	18
IB	HEARTS & FLOWERS RUFFLED BOWL	235	M	POINTITIA & LOTUS LARGE FTD BOWL, SUPER PASTEL IRID	125
P	PEACOCK & FOUNTAIN FRUIT BOWL	185	P	GRAPE & CABLE LOW FRUIT BOWL, UNREAL ELEC BLUE IRID	225

COBLEY MILLER, 7605 NW EASTSIDE DRIVE, KANSAS CITY, MO 64152 phone: 816-741-4635

IB	DANDELION TUMBLER	120	B	DOUBLE STAR TUMBLER	45
A	MILLERSBURG CHERRIES TUMBLER	320	B	GOD & HOME TUMBLER	130
IB	FINECUT & ROSES ROSEBOWL, SMALL CHIP ON 1 FOOT	110	B	ORANGE TREE WINE, BELL SHAPE	45
A	IMPERIAL WINE	25	M	GRAPE ARBOR PITCHER, CRACK IN HANDLE WHERE APPLIED	115

STERLING BUTZ, 221 NORTH ADAMS STREET, ALLENTOWN, PA 18104

P	HEAVY GRAPE 8" PLATE	65	M	KITTENS BOWL, 4 SIDE UP	110
M	MIKADO COMPOTE	80	M	STAG & HOLLY 10" BOWL	85
A	THREE FRUITS 12 SIDED PLATE	90	M	HOBSTAR TABLESET	110
G	VINTAGE FERNERY	50	B	HANGING CHERRIES SPOONER	40
A	HOLLY WHIRL BOWL	50	A	HOLLY WHIRL BON-BON	45

WALLY McDANIEL, 106 SKY PINES ROAD, GRASS VALLEY, CA 95945 phone: 916-273-2205

P	DAHLIA WATER PITCHER	410	M	ORANGE TREE ORCHARD WATER PITCHER	550
P	ACORN BURRS WATER PITCHER	440	M	FEATHER & HEART WATER PITCHER	340
M	FLUFFY PEACOCK WATER PITCHER	325	M	HEAVY IRIS WATER PITCHER	400
B	PANELLED DANDELION WATER PITCHER	325	M	ROBIN WATER PITCHER	190
M	VINEYARD WATER PITCHER	110	G	DOUBLE STAR WATER PITCHER	325

MARY HERREN, 520 SOUTH BERRY, MORGANFIELD, KY 42437 phone AFTER 5: 802-389-3121

M	CHERRY CHAIN 10 1/2" BOWL, FROSTY	70	M	INTERIOR RAYS COVERED BUTTER, GREAT COLOR	25
P	DIAMOND LACE TUMBLER	35	A	VINTAGE PUNCH CUP	12
M	VINTAGE POWDER JAR BOTTOM, MINT	10	M	WOODPECKER WALL VASE, MINT, UNUSUAL COLOR	25
M	TWINS PUNCH BASE	10			

BARBARA BARKER, ROUTE 3, BOX 163-B, SAVANNAH, MO 64485 phone: 816-662-2265  
P GRAPE & CABLE DRESSER TRAY, BANDED 180



SINGLETON & CHERYL BAILEY, PO BOX 95, LORIS, SC 29569 phone: 803-756-7493

MMS	SCALES BOWL								
G	ML586 PEACOCK & URN MYSTERY BOWL	125	A	ML586 PEACOCK & URN COURTHOUSE SIZE SHOTGUN BOWL	325				
A	ML586 PEACOCK & URN M. BEE MASTER I.C. BOWL	225	A	ML586 PEACOCK & URN MYSTERY CRIMPED BOWL	225				
A	ML586 PEACOCK & URN MYSTERY RUFFLED BOWL	225	G	ML586 PEACOCK & URN COURTHOUSE SIZE SHOTGUN BOWL	325				
M	ML586 PEACOCK & URN MASTER I.C. BOWL, BASE ROUGHNESS	90	A	ML586 PEACOCK & URN MYSTERY ROUND BOWL	225				
			M	ML586 PEACOCK & URN 10 1/2" BOWL, M. BEE	95				

BARBARA NELSON, RFD 4 - BOX 155, LACONIA, NH 03246 phone: 603-293-7246

G	GRAPE & GOTHIC ARCHES BUTTER LID	40	G	GRAPE & GOTHIC ARCHES SUGAR, NO LID, RIM CHIP, CRACK	10
G	GRAPE & GOTHIC ARCHES SPOONER 40, ALL 3 PIECES	75	IB	HEARTS & FLOWERS 8 1/2" BOWL, SUPER IRI, PINK & LAV	250
M	HEARTS & FLOWERS COMPOTE, FROSTY WITH MULTI COLORS	115	M	HOLLY BOWL, I.C. SHAPE, SUPER COLORS, EXTRA NICE	40
M	LEAF CHAIN 7 1/2" PLATE, RICH MARI	75	M	DRAPE LIGHT SHADES, SET OF THREE	150
G	WISHBONE 8 1/2" FTD BOWL, PINK & BLUE IRID	60	M	WISHBONE 8 1/2" FTD BOWL, DARK MARI WITH AMBER TINT	45

DARLENE YOHE, PO BOX 343, STUTTGART, ARK 72160

M	GRAPE ARBOR TUMBLER	120	P	GRAPE & CABLE COVERED BUTTER	185
M	ORANGE TREE GOBLET	30	P	FLUTE TUMBLER	85
IB	GRAPE ARBOR TUMBLER	120	G	BUTTERFLY & BERRY MASTER BERRY	135
M	GARLAND ROSEBOWL	45	G	LOUISA ROSEBOWL	65
B	LEAF & BEADS ROSEBOWL	75	P	LEAF & BEADS ROSEBOWL	75

DOLORES T. VESPRILLE, 200 DAKE AVENUE, ROCHESTER, NY 14617 phone: 716-544-4688

M	PANTHER SAUCE	30	M	FOUR-SEVENTY-FOUR PUNCH CUP	23
P	GRAPE & CABLE CANDLEHOLDER	110	P	GRAPE & CABLE SPOONER	95
M	ACORN BURRS 7 PC BERRY SET	250	M	GRAPE & GOTHIC ARCHES 7 PC BERRY SET	150
M	POPPY SHOW BOWL, FROSTY	195	B	PERSIAN MEDALLION COMPOTE, CANDY RIBBON EDGE	45
M	VINEYARD 7 PC WATER SET	160	M	PEACOCK & FOUNTAIN FRUIT BOWL, FANTASTIC COLOR	150

DENNIS KECK, 126 CHERRY STREET, PUNXSUTANNEY, PA 15767 phone: 814-938-7426

PO	DOSWOOD SPRAYS DOME FTD BOWL, SUPER & MINT	125	PO	STIPPLED PETALS DOME FTD BOWL, USUAL BASE ROUGHNESS	45
PO	SINGLE FLOWER 9" BOWL	30	PO	STIPPLED FLOWER 8 1/2" BOWL	20
PO	SWIRL RIB VASE, SMALL BASE FLAKE	20	PO	WIDE RIB VASE, 5X5", SHORT & FLARED OUT	35
P	APRIL SHOWERS 10" VASE	25	P	MAPLE LEAF CREAMER, GOOD COLOR	60
M	DIAMOND POINT CREAMER	15	M	FLUTE & CANE (WITHOUT THE CANE) MILK PITCHER, DARK	65

RAYMOND HEELEY, 210 OVERLOOK, PAINSVILLE, OH 44077 phone: 216-354-3440

A	GRAPE & CABLE WHISKEY DECANTER & STOPPER	650	A	GRAPE & CABLE SHOTGLASS	140
M	GRAPE & CABLE SHOTGLASS	140	DM	POPPY SHOW PLATE	300
B	STAG & HOLLY 10 1/4" FOOTED BOWL	325			

MARY WELCH, 213 ALEXANDER, SCOTIA, NY 12302 phone: 518-393-7748

AMB	ORANGE TREE SHAVING MUG, SCARCE COLOR	65	IG	FLORENTINE CANDLESTICKS, PAIR	75
M	MELON RIB SET OF SHAKERS	25	PO	FLOWERS & FRAMES DOME FOOTED BOWL	55
B	ACORN 7" BOWL	49	B	SAILBOATS RUFFLED SAUCE	49
B	MILADY TUMBLER, HAVE 2, EACH	65		SEND 2 STAMPS FOR LIST OF 350 ITEMS FOR SALE	

MICHAEL S. LEMELLEN, 2724 23RD STREET, COLUMBUS, IN 47201

P	HOLLY & BERRY BOWL	48	A	GRAPE & CABLE PLATE	75
A	GRAPE WREATH ROUND BOWL, RADIUM FINISH	55	PO	FLORAL & WHEAT STEMMED 80M-B0M	45
A	PANELLED DANDELION & PC WATER SET, SMALL SPOT PIT.	500	M	FASHION 7 PC WATER SET	225

BOB GRISSOM, 7900 CRESCENT, RAYTOWN, MO 64138 phone: 816-356-5320

G	ACORN BURRS TUMBLER, MINT	65	M	BEADED SHELL TUMBLER, MINT	65
G	MILLERSBURG CHERRY, MINT	225	A	PERFECTION TUMBLER, SMALL SCRATCH TOP RIM	350
M	RASPBERRY TUMBLER, MINT	40	M	SCALE BAND TUMBLER, MINT	60
M	SODA GOLD TUMBLER, TINY FLAKE BASE RIM	70	M	SPRINGTIME TUMBLER, MINT	60
M	STAR & FILE TUMBLER, MINT	75	B	STORK & RUSHES TUMBLER, BEADED BAND, MINT	100

TED SHEIBLEY, 3044 HILLCREST DRIVE, NEW CUMBERLAND, PA 17070

A	PEACOCK & URN FLUTED BOWL	150	G	STRAWBERRY BOWL, N	60
M	PANTHER MASTER BERRY BOWL	115	M	HORSES HEADS BOWL, JACK-IN-PULPIT SHAPE	90
M	BIRD WITH GRAPES WALL VASE	20	M	CANADA DRY BOTTLE WITH ORIGINAL LABEL	25
M	STORK VASE	20	M	GOLDEN GRAPE RUFFLED DISH	25
M	LIONS BOWL	140			

ARTHUR I. SMITH, 4535 HOLDER COURT, LAKELAND, FL 33803 phone: 813-644-4058

CARNIVAL GLASS COLLECTORS ITEM, WOMAN'S DAY MAGAZINE, AUGUST 1965 EDITION IN MINT CONDITION

FEATURING A DICTIONARY OF CARNIVAL GLASS, 9 PAGES AND 100 COLOR PHOTOS

\$6.25 POST-PAID



JOHN RESNIK, 4290 JACKSON AVENUE, CULVER CITY, CA 90230 phone: 213-839-1588  
BLUE LATE paneled THISTLE WATER PITCHER, ONE OF THREE KNOWN, RARE 1500.

AL SEBAUGH, 9116 FORT DONELSON DRIVE, ST. LOUIS, MO 63123 phone: 314-843-6122

P	HEAVY GRAPE 9" BOWL	28	M	DOUBLE STEM ROSE 9" BOWL	25
DM	AUTUMN ACORNS 9" BOWL	30	PO	FLOWERS & FRAMES 9" BOWL	75
PO	SKI STAR 10" BOWL	125	A	GRAPE & CABLE TANKARD TUMBLER	60
G	GRAPE & CABLE TANKARD TUMBLER	68	B	FENTON'S BASKET, ONE EDGE UP, ONE DOWN	55
B	FENTON'S BASKET	45	G	ACORN BURRS PUNCH CUP	25

ROSEMARY MURRAY, RT.1 - BOX 1360, IRVINGTON, AL 36544

M	BUTTERFLY & BERRY MASTER BERRY BOWL	65	G	DRAGON & LOTUS THREE FOOTED BOWL	55
M	CARNIVAL HOLLY BOWL, BUBBLE INSIDE IN THE MAKING	35	A	DRAGON & LOTUS 8" FLUTED BOWL	50
G	GRAPE & CABLE BOWL, SOME IRI OFF OF GRAPES	40	A	DRAGON & LOTUS THREE FOOTED BOWL	50
A	FLUTED BASKETWEAVE BACK GRAPE (???)	55	B	CARNIVAL HOLLY 8 1/2" BOWL, BEAUTIFUL COLOR	55
M	CATTAIL PUNCH BOWL BASE	40	P	THREE FRUITS BOWL, IRI WEAR INSIDE, BASKETWEAVE EXT 55	55

BURNEY TALLEY, 1814 SLATE N.W., ALBUQUERQUE, NM 87104 phone EVENINGS: 505-242-1261

M	STIPPLED RAYS 6" PLATE	25	A	VINTAGE 7 1/2" PLATE	87.50
P	SINGING BIRDS TUMBLERS, 3 @ \$50 EACH OR ALL FOR	145	G	MLSBG COSMOS SMALL BOWL, RADIUM	45
M	ORANGE TREE PUNCH BOWL & BASE	125	A	STORK & RUSHES MUG, SCARCE	85
M	SAILBOATS 6" PLATE, SCARCE	100	RED	DRAGON & LOTUS BOWL, ICE CREAM SHAPED	625

CHUCK BULLARD, 14915 DARK STAR COURT, MORGAN HILL, CA 95037 phone: 408-779-1452

G	GREEK KEY TUMBLERS, HAVE 2, EACH	95	M	5000 LUCK BOWL, PIECRUST EDGE	100
A	WHIRLING LEAVES BOWL	70	M	GRAPEVINE LATTICE TUMBLERS, HAVE 5, EACH	25
G	COINDOT ROSEBOWL	65	A	FERN BRAND CHOCOLATES PLATE, TWO SIDES UP	250
P	BROKEN ARCHES PUNCH CUPS, HAVE 2, EACH	20	M	BUSHEL BASKET, 8-SIDED	120
IB	PREMIUM CANDLESTICK	40	P	BUTTERFLY BUSH COMPOTE	130

AL RETTKE, 14226 EAST 143RD LANE, BURNSVILLE, MN 55337 phone: 612-432-7489

IB	SINGING BIRDS MUG	775	M	SINGING BIRDS MUG, FLAKE, CALL	525
A	BLOSSOMTIME COMPOTE	90	M	SINGING BIRDS SPOONER, CREAMER, COVERED SUGAR	225
IB	ROSESHOW BOWL, NO SHOW FLAKE ON COLLAR	235	A	PEACOCK @ FOUNTAIN SPOONER, TINY CHIP ON BASE	35

RUTH SCHINESTUHL, PO BOX 694, ABSECON, NJ 08201 phone: 609-641-1814

A	CHATELAINE TUMBLER	295	M	CRABCLAW TUMBLER	45
M	TROUT & FLY ICE CREAM SHAPED BOWL	295	M	AQUA SAILBOATS SAUCE	95
PO	TARGET VASE	45	M	DRAPERY CANDY DISH	85
G	MLSBG BLACKBERRY 10" BOWL, SMOOTHED EDGE	45	M	DARK TAPESTRY HATPIN	45
IB	GRAPE & CABLE BANANA BOWL	425	IG	GRAPE & CABLE BOWL, 3 FLAKES	150

EDWARD L. HENDERSON, 1111 N. COLLEGE, STUTTGART, ARK 72160 phone AFTER 6PM: 501-673-8757

A	TWELVE POINT 8" BOWL	40	M	PANTHER MASTER BERRY BOWL, MINUTE CRACK	50
M	DIAMOND COMPOTE, CHIP ON RIM	10	M	RIBBED COMPOTE	12
M	STAR & FILE 6" COMPOTE	50	M	DAISY & FERN NAPPY	20
M	GRAPE & CABLE 2 HANDLED NAPPY	40	A	CRACKLE 9 1/2" PLATE	40
M	IMPERIAL GRAPE 9" PLATE, SMALL CHIP ON EDGE	20	M	FASHION PUNCH BASE	40

TOM MORDINI, 36 N. MERNITZ AVE., FREEPORT, IL 61032 phone: 815-235-4407

IB	ACORN 6" RUFFLED BOWL, FENTON	105	B	DRANGE TREE POWDER JAR	65
M	DRAGON & LOTUS 9" RUFFLED BOWL	35	G	GRAPE & CABLE SHERBERT, DOME FOOT, M	35
M	RIBBED VASE, N	30	P	STIPPLED PETALS DOME FOOTED BOWL, RARE COLOR	75
P	BEADED SHELL MUG	65	M	PERSIAN MEDALLION PUNCH BOWL TOP ONLY	75
M	BLACKBERRY BANDED HATS, HAVE 2, EACH	15	B	STORK & RUSHES TUMBLER	20

JOHN GIBNEY, 3423 1ST AVE. SW, CEDAR RAPIDS, IA 52405 phone: 319-396-7900

P	GRAPE & CABLE OPEN COMPOTE	400	P	GRAPE & CABLE MASTER PUNCH BOWL BASE	150
P	GRAPE & CABLE CRACKER JAR	250	B	ORANGE TREE BREAKFAST SET	100
G	INVERTED FEATHER CRACKER JAR	200	M	PEACOCK @ FOUNTAIN BUTTERDISH	125
B	PEACOCK @ FOUNTAIN PITCHER & 2 TUMBLERS	300	A	PEACOCK @ FOUNTAIN FRUIT BOWL, ROUGH EDGE	250
A	PEACOCK @ FOUNTAIN BERRY BOWL	75			

DEAN & DIANE FRY, 5395 MIDDLETON ROAD, SAN DIEGO, CA 92109 phone EVENINGS: 619-272-1663

M	NORTHERN STAR CARD TRAY	30	AO	DAISY & DRAPE VASE, PASTEL	385
M	PINEAPPLE BOWL	40	B	CAPTIVE ROSE BON-BON	55
M	CORNUCOPIA	22	G	SHELL & SAND 8 1/2" BOWL	42
M	FINE RIB 10" VASE, M	20	P	GRAPE & CABLE PIN TRAY	150
M	STRAWBERRY BON-BON	30	M	THREE IN ONE 7" PLATE	50



\*\* CARNIVAL GLASS WANTED \*\* CARNIVAL GLASS WANTED \*\*

DEAN & DIANE FRY, 5395 MIDDLETON ROAD, SAN DIEGO, CA 92109 phone EVENINGS: 619-272-1663

- PARKERSBURG ELK PLATE M HATTIE ROSEBOWL
- ROSE TREE BOWL M ESTATE MUG
- LION BOWL A FLEUR DE LIS FOOTED BOWL
- PEACOCK & DAHLIA PLATE A STRAWBERRY COMPOTE
- BERNHEIMER BOWL A MLSB6 PEACOCK 6" PLATE

CHUCK BULLARD, 14915 DARK STAR COURT, MORGAN HILL, CA 95037 phone: 408-779-1452

- 474 PUNCH BOWL M MULTI FRUITS & FLOWERS PUNCH CUP
- FIELD FLOWER TUMBLERS G ACORN BURRS TUMBLER, NEED 1
- FOOTED ORANGE TREE TUMBLERS P HOBSTAR & FEATHER TULIP TOP PUNCH SET
- HOBSTAR & FEATHER BRIDGE SET-ANY OR ALL PIECES M FRUITS & FLOWERS STEMMED BON-BON

DENNIS KECK, 126 CHERRY STREET, PUNXSUTAWNEY, PA 15767 phone: 814-938-7426

- WISBONE EPERGNE BASE G PEACOCK @ FOUNTAIN OR SPRINGTIME BUTTER LID
- HORNAIL BUTTER BASE P GRAPE & CABLE BUTTER BASE
- VINTAGE EPERGNE BASE, SMALL SIZE M GRAPE & CABLE COOKIE JAR LID
- BOUQUET TUMBLERS WITH GOOD COLOR M FENTONIA COVERED SUGAR OR CREAMER
- B, 16 BEADED CABLE ROSEBOWLS G, 40 EMBROIDERED MUMS OR HEARTS & FLOWERS BOWLS OR PLATES

LOUIS BRADFORD, ROUTE #2 WEST, PADUCAH, KY 42086

BROCADED PATTERNS, ANY PIECES, ANY COLORS  
CORN VASES: B, AO, M, 1G, 1G with M overlay

MICHAEL S. LEWELLEN, 2724 23RD STREET, COLUMBUS, IN 47201

- DIAMOND & SUNBURST WINES, UP TO 6 A GRAPE & CABLE SUGAR BOWL LID
- FEATHERED SCROLL SUGAR BOWL LID P SPRINGTIME SUGAR BOWL LID

JOHN RESNIK, 4290 JACKSON AVENUE, CULVER CITY, CA 90230 phone: 213-839-1588

A EXCHANGE BANK 6" ADVERTISING BOWL OR PLATE  
A GREENGARD FURNITURE ADVERTISING BOWL OR PLATE

\*\*\*\* I NEED THESE TWO TO COMPLETE MY COLLECTION AND WILL PAY ALMOST ANY RIDICULOUS PRICE \*\*\*\*

TED SHELLEY, 3040 HILLCREST DRIVE, NEW CUMBERLAND, PA 17070

- A STRUTTING PEACOCKS LID P PEACOCK @ FOUNTAIN PUNCH BOWL
- M SPRINGTIME SUGAR LID M GRAPE & CABLE BUTTER BOTTOM
- B MAPLELEAF SUGAR LID ANY PEACOCK ON FENCE PIECES
- ANY STRAWBERRY PLATES ANY PATTERN STIPPLED PLATES
- 1G JOHN MUEHLBAUER, 7051 LA COSTA LANE, CITRUS HEIGHTS, CA 95621 phone days: 916-355-2455, evenings: 916-723-2852
- AO ACORN BURRS PUNCH SET M, 6 EMBROIDERED MUMS BOWLS
- AO HEARTS & FLOWERS BOWL MNG DRAGON & LOTUS BOWL
- M SUNKEN HOLLYHOCK GNM LAMP TOP G M's PEACOCK & URN LARGE ICE CREAM BOWL

MALLY McDANIEL, 106 SKY PINES ROAD, GRASS VALLEY, CA 95945 phone: 916-273-2705

\*\*ANY COLOR\*\* GOOD LUCK PLATES

M, 1B, 1G, AO GOOD LUCK BOWLS

\*\*ANY\*\* UNUSUAL SHAPE OR COLOR GOOD LUCK BOWLS OR PLATES

RICHARD W. PARRISH, VALERIE A. PARRISH, 1128 ELK STREET, DECATUR, IN 46733

P MANY FRUITS RUFFLED PUNCH BASE DM FASHION TUMBLERS, NEED 5

M ROBIN TUMBLERS, NEED 3

\*ANY\* GOOD LUCK BOWLS OR PLATES \*ANY\* PEACOCKS BOWLS OR PLATES

LARRY KEIG, 301 UNION STREET, FAYETTE, IA 52142

- G IMPERIAL GRAPE WINE DECANTER STOPPER P VINTAGE POWDER JAR LID
- R, 6 PULLED LOOP VASE 11-12" M SOUVENIR ITEMS WITH IOWA CITIES OR TOWNS ON THEM
- B FANTAIL SMALL BERRY BOWL M HEARTS & TREES SMALL BERRY BOWL
- P ACORN BURRS PUNCH BOWL (HAVE TOP) G INVERTED STRAWBERRY POWDER JAR LID

HARK WESTERHUIS, RR #1 - BOX 49, FLATIE, SD 57369 phone: 605-337-3631

M MANY FRUITS PUNCH BOWL BASE

M ORANGE TREE CREAMER M MANY FRUITS PUNCH BOWL BASE

G GRAPE & CABLE BUTTERDISH BOTTOM

WM. CROWL, 2835 HOLLYWOOD BLVD., HOLLYWOOD, FL 33020 phone: 305-921-5009

PO FRUIT SALAD PUNCH BOWL BASE

RED REGAL TRIS GNM TOP



GLORIA PEIFFER, 219 DELEMAINE DRIVE, ROCHESTER, NY 14621 phone: 716-266-1273  
H FOOTED ORANGE TREE SUGAR BOWL

A.O. CROMER, 1150 N. TOPEKA, WICHITA, KS 67214 phone: 316-262-1775  
PO FISHNET EPERGNE BASE

JESSIE MAY BARDWELL, 724 MINNESOTA AVENUE, MCCOMB, MS 39648  
P ACORN BURS TUMBLERS WITH GOOD IRIDESCENCE, NEED 6

NANCE BLACKBURN, 25 TROY STREET, ST. APPLECRASS, 6153, WEST AUSTRALIA phone: 09-364-3717

\*\*\*ANY\*\* AUSTRALIAN EMU OR NEW ZEALAND KINI PIECES

WILL TRADE THE FOLLOWING BOWLS THAT HAVE GOOD IRIDESCENCE AND ARE IN GOOD CONDITION:

Large Harigold KANGAROO, small dark KANGAROO, large dark KOOKOORRA

\*\*\*\*\* DON'T FORGET \*\*\*\*\*

LOOKING FORWARD TO SEEING BOTH OLD AND NEW FRIENDS AT WICHITA IN OCTOBER

Quite a lot of new information is now known about Harry Northwood and I will be including this in my talk as well as more information about the exporting of Carnival Glass which may give you some clues about what are likely to be the "hot" colours and shapes turning up over the next few years. I will also be explaining why we are depositing a small fortune in Carnival in a English Museum. Lots of interesting facts and hopefully a few laughs as well. I am looking forward very much to visiting with you and seeing all of your beautiful glass displays.

RAY NOTLEY

CALL the Wichita Airport Sheraton for reservations,  
phone 316-943-2181, dates are October 19-21