

H.O.A.C.G.A.
BULLETIN SECRETARY
AL RETTKE
14226 East 143rd Lane
Burnsville, MN 55337

FIRST CLASS MAIL

IT'S NOT TOO LATE!!!

TO GET A FREE TABLE FAVOR MUG,
RECRUIT ONE NEW MEMBER IN OCTOBER.

THIS IS NATIONAL CARNIVAL GLASS MONTH!!!

OCTOBER 15, 1984

S	M	T	W	T	F	S
1	2	3	4	5	6	
7	8	9	10	11	12	13
14	15	16	17	18	19	20
21	22	23	24	25	26	27
28	29	30	31			



Heart of America
Carnival Glass
Association Inc.

Membership June to May
\$20.00 per couple or single

Published the 15th
of each month

PRESIDENT

Cooley Miller
7605 N.W. Eastside Drive
Kansas City, MO 64152
816-741-4635

VICE-PRESIDENT

Diane Treff
13646 Leavenworth Road
Kansas City, KS 66109
913-721-2917

TREASURER

Karen Engel
35292 Oak View Drive
Brownsville, OR 97327
503-466-5989

SECRETARY

Lucile Britt
3048 Tamarak Drive
Manhattan, KS 66502
913-539-1933

BULLETIN SECRETARY

Al Rettke
14226 East 143rd Lane
Burnsville, MN 55337
612-432-7489

All monetary figures quoted are in U.S. dollars.
Please make checks for dues payable to H.O.A.C.G.A.
and send them to the secretary as listed above.

*** HQAGA SEPTEMBER MONTHLY MEETING ***

On September 23rd, President Cooley Miller called the meeting to order at the home of Charles and Anna Bell Vaughn in Baldwin, Kansas. A good crowd was in attendance.

The August minutes were read by the Secretary, Lucile Britt, and approved as read. The Treasurer's report was read, approved and will be put on file for audit.

Lucile showed the sample for the 1985 table favor mugs. It is made by Moser in the color of "Heather Bloom" (pink iridescent), and is very pretty.

President Miller welcomed new members, Raymond and Bessie Poe from Topeka, Kansas.

John Britt gave the souvenir report. It will be a red bell with Harry Northwood's portrait on one side. Circle Scroll will be the pattern on the bell and what a pretty souvenir this will be!! HOACGA will follow in later years with Frank Fenton Sr., a man from Millersburg and a man from Imperial and then who knows?

There are only 5 1984 red ferneries left.

Marge Miller made a motion that we return to the Holiday Inn Airport for the 1985 convention. Anna Belle Vaughn seconded the motion and it was carried. The Holiday Inn is remodeling ALL of the rooms with new carpet, drapes and furniture. President Miller has checked many other motels in the area (and Lawrence), but none can accommodate us with the accommodations we require -- bringing our own food in for the chuckwagon is a main item and the cost of the rooms is also a factor.

Bob Grisson reported on inserts for 1985. The pages will be on rosebowl and to date, 85 patterns have been identified. Bob moved the meeting be adjourned and Rosa seconded. The Vaughn's served nice snacks and Charles showed members their carnival and discussed various pieces.

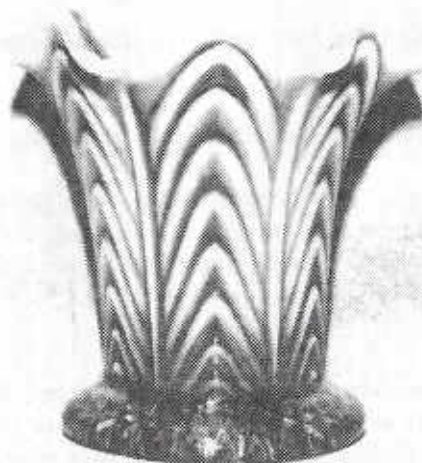
The next meeting will be held October 27th, at the Holiday Inn Airport at 2 PM.

MARJORIE MILLER, ACTING SECRETARY

LUCILE BRITT, SECRETARY

PICTORIAL PATTERN PARADE

by John & Lucile Britt



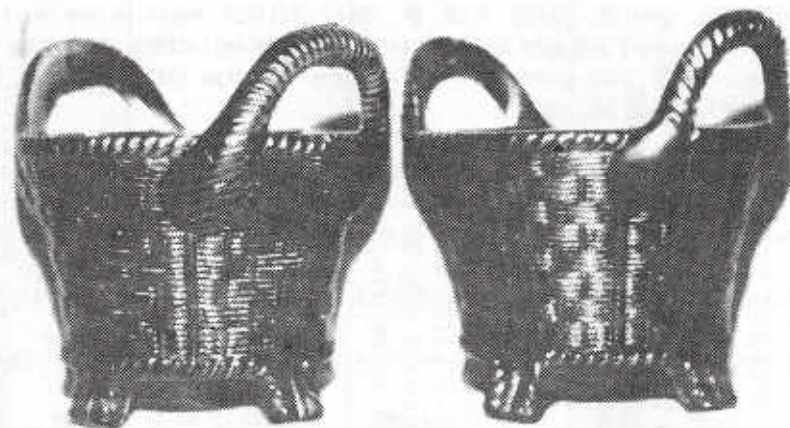
BOGGY BAYOU VASE

The above "Boggy Bayou" vase is not only rare and beautiful, but it is also in the very desirable LIME GREEN OPALESCENT color.

This piece shows a lot of "glow" when placed under a black light. The vase is rather short, standing only 5 inches high. The base is 3 1/2 inches wide and contains a sunburst type figuration on the underside of the bottom. There are six ruffles at the top of the vase and it has a lot of opalescence all the way to the bottom.

The "Boggy Bayou" pattern was named by William Heacock and is shown in his book "Fenton Glass - The Second Twenty-five Years" (page 64 - #545). It is also photographed in his Victorian colored pattern glass book called "Opalescent Glass from A to Z" (page 80 - #430). This pretty pattern was made only in vases and is mostly found in opalescent glass without iridescence. I have seen a few of these vases in marigold carnival glass, but this is the only one I have ever seen in iridised Lime Green Opalescent.

The "Boggy Bayou" pattern is attributed to the Fenton Art Glass Company of Williamstown, West Virginia. This interesting and unusual piece was found by L.L. and Jane Dinkins of Houston, Texas.



NORTHWOOD BASKET WITH UNUSUAL HANDLE

Notice that the variant basket on the right has a smooth area where the handles join the basket.

These round baskets are otherwise the same. You might check your baskets to see if you have one of these variants in your collection. I have observed only a very few of this type of basket and they all have been in emerald green and in the round shape.

We would appreciate hearing from any of you that might have one of these baskets with this type of handle. This would let us all know just how rare they are and also if they do exist in any color besides green. The basket shown in our snapshot are from the Roland Kuhn and Donald Kime collection.

JOHN & LUCILE BRITT

A MEMBER WRITES:

I was just looking at the very educational notebook that HOACBA puts out and I see where I neglected to send for the third set of inserts on water sets, enclosed is my order. My Husband and I just received the September Bulletin and we both have read it from cover to cover. An excellent job is done by all on both notebook and Bulletin. We hope to attend one of your conventions in the future.

SHIRLEY BURNETT, NEW YORK

LETTERS FROM MEMBERS

Let me tell you about the CARNIVAL GLASS CLUB OF GREAT BRITAIN which is now in its third year and flourishing. It continues to expand and more and more carnival glass collectors are coming forward from all over the country and joining us. Many overseas collectors have too, from the USA, Canada, South Africa and Australia, but so far, none from New Zealand.

The enthusiasm for Carnival over here in the UK is tremendous and some of the finds that have come to light have been both exciting and exceptional this year. Members have reported some really lovely and interesting pieces. I will only mention two here; a rare piece of black carnival and a red Orange Tree rosebowl.

US collectors interested in joining the Carnival Glass Club Of Great Britain, please write me for details:

ANGELA HALLAM, ORGANISING SECRETARY, 62 CHART LANE, REIGATE RH2 7EA, SURREY, ENGLAND

It was interesting to read Mr. Hartnell's article regarding the "Northwood's Rose Wreath" bon-bon in the Bulletin. I recently found one of these in Amethyst. This is the only one I have ever seen in my years of collecting. The current totals of known Rose Wreath pieces should now be revised to 1 blue, 1 marigold and 2 amethyst bon-bons. If there are others out there, let us know.

In my opinion, we should stick to the Hartung name of Northwood's Rose Wreath. I believe if Mr. Heacock had realized Mrs. Hartung had already named this pattern, he would not have renamed it.

JEANETTE ECHOLS, PEACH STATE CARNIVAL GLASS CLUB, GEORGIA

I have a gripe concerning the For Sale items in the Bulletin. I wish everyone would include the size of bowls and plates in describing the item!! I do not feel that I should have to pay for a telephone call to find out the diameter when it is not mentioned in the ad. What is your suggestion?

R.C.Q.

EDITORS COMMENT: I agree IF THE PIECE WAS MADE IN MORE THAN ONE SIZE MOLD. And before any of you write in to say you included 9" in the description of your N's Peacock plate, they are ALL 9" within a 1/2", so on something like that, I may drop the size to make it easier to enter the ads. The bottom line still is if it was made in more than one mold size, you would be wise to include the size. -AL-

PAGE 5

*** NEWS FROM THE AIR CAPITOL CARNIVAL GLASS CLUB ***

We held our September meeting at the home of Sadie and Herb Treff in Kansas City, Kansas. 15 of us drove to Kansas City where we met 5 more members and 2 guests. Sadie and Herb had prepared a banquet meal for all of us. Thank you for such a wonderful day, it will be our best meeting this year.

Charles and Anna Belle Vaughn brought some glass to show us and John and Lucile Britt gave a talk on their travels on the carnival trail this summer. They were at most all of the conventions, saw lots of beautiful glass and met some nice people on the trip.

Our convention plans are coming along great and we hope to see all of you at Wichita in October. (19-20-21)

DONALD E. KIME, ACCGC SECRETARY

*** TAMPA BAY CARNIVAL GLASS CLUB NEWS ***

The TBCGC started it's fall season with a meeting Sunday, September 16th, at the home of Maria & Nick Vafidis in Tarpon Springs. Following the traditional buffet, it was back to carnival glass as usual.

Art Smith reported that plans are well under way for the FOURTH ANNUAL LOSE YOUR HEART TO CARNIVAL GLASS JAMBOREE to be held February 7-8-9, 1985 in Lakeland, Florida. The popular carnival glass forum will be held on the 8th with John & Lucile Britt, Robert Vining and Rovene Heaton participating. Additional participants will be announced. In addition, a welcoming hospitality room, banquet and auction will be a part of the Jamboree. The highlight is a large glass display and sale on Saturday. Reservation forms will be available in December.

The theme for this month's meeting was Millersburg Glass. A lively discussion was held and several fine examples of this factory's production were shown. The next meeting will be at noon, Sunday, October 21 at the home of Gary Wilder in Clearwater.

ARTHUR I. SMITH, TBCGC PRESIDENT

PAGE 6

EDUCATIONAL TUMBLER SERIES

by John & Lucile Britt



RARE VINTAGE BANDED TUMBLER

"Vintage Banded" tumblers are not discussed much by most tumbler collectors, probably because they are so very hard to find. Only a few of these rare tumblers are known to me. To the best of my knowledge, they were made only in marigold, no old tumblers or pitchers have ever been reported in any other color. The pitcher too, is seldom found and is considered rare. Being a little smaller than most water pitchers, this one is sometimes referred to as a cider pitcher. Whatever you wish to call them, they were never made in any quantity.

"Vintage Banded" tumblers are also rather small in size, standing only 3 3/4 inches tall with a base diameter of 2 1/4 inches and 2 3/4 inches across the top. The bottom of the base is plain and IS NOT iridised. There are three clusters of grapes placed around the tumbler. Narrow panels form the background, which is very similar to those used on the Peacock at the Fountain tumblers. The grape design is bordered at the top and bottom by one half inch bands. This, in all probability, is why the pattern got the name "Vintage Banded". The "Vintage Banded" pattern is considered to have been made by Dugan/Diamond at Indiana, Pennsylvania.



"Vintage Banded" Tumbler & Pitcher

Unfortunately, this pattern was among the old Dugan/Diamond molds that were purchased by Wright. Wright had Westmoreland reproduce this pattern for them in the complete water set. You will have no trouble identifying these new water set pieces from the old. First of all, the new water sets were made in purple. Also, Westmoreland used Wright's "W in a circle" mark on the bottom of them. So, if you have or find a marigold tumbler or pitcher in this pattern, you can be sure that they are old.

If you find a purple piece that is marked, it is definitely NOT old. I might also point out that all of the new Westmoreland tumblers that I have seen are iridised on the bottom of the base. This does not hold true for all new tumblers, however. We have some new tumblers that were made or iridised by other companies (such as Imperial or Moser) that were not iridised on the bottom. In all of these cases they are plainly marked, however.

Because of their great rarity, these little marigold "Vintage Banded" tumblers are highly sought after by collectors today. If you have one in your collection, you can consider yourself lucky as they are very seldom ever offered for sale.

This is #81 in this series. Next month we will cover the "Rising Sun" tumbler, one that was made by the old U.S. Glass Company.

JOHN & LUCILE BRITT

Carnival Cameos

BY DONALD MCCRE



UNLISTED WINE SET

I have been unable to find any information concerning this set. It is undoubtedly European. This is suggested by the fact that it is not a strong marigold and also because it was found in a shop that specializes in English imports. The undertray would also indicate that it was not made in the United States. Several cordial sets with undertrays have turned up and it is felt that they were produced overseas. Some have suggested Czechoslovakia. Regardless of where they may come from, these sets are quite rare, very desirable and add an interesting dimension to any collection.

The set shown here is a bit smaller than the wine sets made here in the states. It is too large to be a cordial set, so I feel quite sure it was intended for wine.

If we didn't already have a pattern called "Pineapple", that would be the name we should give to this set. This is quite a different "pineapple" than the one made by the Sowerby Company in England. These pieces include a creamer, sugar, compote, covered butter and various sized bowls. The Sowerby pattern is raised while the one in this wine set is intaglio. Perhaps "INTAGLIO PINEAPPLE" would be as good a name as any for this set. If you have any information regarding this set, please let me know.

OLD CARNIVAL GLASS LIBRARY

CARNIVAL GLASS RARITIES-A color line approach. Lists the top 10 rarities in each color-plus complete rarities price guide-40 pages of black and white pictures-special section on whimsys-\$8.50 pp. Also **THE SHAPE OF THINGS IN CARNIVAL GLASS**, 110 pages, 200 items in full color-\$9.95. Don Moore, 2101 Shoreline Drive, Apt 462, Alameda, CA. 94501.

CARNIVAL GLASS SERIES-by Marion T. Hartung. Each book has 100 different patterns-10 books in the series, books 1,2 and 3-\$3.00 ea, books 4 thru 10-\$3.50 ea. 1981-82 price guide-\$5.00 pp, Northwood Pattern Glass-clear, colored, custard and carnival-\$9.95, plus .50 postage. Order from Ione Henshaw, 903 East 6th Ave., Emporia, KS 66801.

CARNIVAL IN LIGHTS-A full color book on Carnival Lighting, including Gone With The Wind Lamps, Candle Lamps and shades-price guide included-\$11.95 plus postage, Helen Greguire, 103 Trimer Road, Hilton, NY. 14468.

CARNIVAL GLASS TUMBLERS-Author Richard Owens-order from Don Brown, Wallace-Homestead Book Company, 1912 Grand Ave., Des Moines, IA. 50303.

THE STANDARD ENCYCLOPEDIA OF CARNIVAL GLASS REVISED EDITION NOW AVAILABLE, many new photographs and expanded European carnival section-\$24.95 (with new price guide), NEW PRICE GUIDE includes eight color columns, size 8x11 - \$4.95, **IMPERIAL CARNIVAL GLASS-THE EARLY YEARS**-\$9.95, **FENTON CARNIVAL GLASS-THE EARLY YEARS**-\$9.95, **MILLERSBURG THE QUEEN OF CARNIVAL GLASS**-\$8.95, **NORTHWOOD, KING OF CARNIVAL GLASS**-\$9.95, Bill Edwards Author, Collectors Books, Paducah, KY.

CARNIVAL GLASS WORLDWIDE--by M. Quinton-Baxandale. 200 Colour Photographs * Pattern Name Index * Exclusive Research * Clubs Worldwide Listed * Order from: **CARNIVALIA PUBLICATIONS**, PO Box 1, LOSTWITHIEL, CORNWALL, L22 0YZ, ENGLAND US \$13.50 (surface mail) US \$15.00 (airmail) Payment with order please, by International Cheque or Money Order.

CARNIVAL GLASS--by Ray Notley, Shires Album # 104. ISBN 0 85263 637. Price is only \$3.55 including postage. Send to 7 Hills Books, 519 W. 3rd. Street, Cincinnati, OH. 45202

FENTON GLASS--THE FIRST 25 YEARS--144 pages, 72 in full color, more than 400 items pictured in Fenton's carnival and iridescent "stretch" colors, rare catalogue reprints (some in color), a complete history of the factory's early years, from 1907 to 1932, \$15.95 for softcover edition with price guide, \$20.00 for limited edition hardbounds. Order from the author, William Heacock, P.O. Box 27037, Columbus, OH. 43227.

"CARNIVAL GLASS - An Introduction to the Iridescent Pressed Glass Grandma had on her sideboard", Angela Hallam's 52 page fully illustrated paperback is NOW AVAILABLE IN THE U.S. for only \$2.95 ppd. Nancy Johnson, The Library, P.O. Box 37, Des Moines, IA 50301

CARNIVAL GLASS AUCTION PRICE REPORT--1984 Edition. This years edition will have approximately 4000 entries from major auctions in 1983. Single copy price is still \$8.00 US postpaid (for overseas delivery, add \$1.00). Order from: Al & Wendy Rettke, 14226 E. 143rd Lane, Burnsville, MN 55337

"Encore by Dorothy" books 1 and 2. A series of books on new reproduced Carnival Glass, giving information on the patterns and colors that are being reproduced. Price for each book is \$7.70 postpaid. Be sure to state which book you want. Dorothy Taylor, Box 11734, Kansas City, MO, 64138.

"CARNIVAL GLASS" educational brochure with color photographs. Available to interested collectors or dealers who wish to better describe to and inform the public about our glass. Free of charge from the American Carnival Glass Association. Contact Ruth Schinestuhl, P.O. Box 694, Absecon, NJ 08201.

** GLASS FOR SALE ** GLASS FOR SALE ** GLASS FOR SALE ** GLASS FOR SALE ** GLASS FOR SALE **

M	LATTICE & GRAPE 5 PIECE WATER SET	225	P	DIAMOND & RIB VASE	30
B	HOLLY HAT, ROUGH ON BASE	24	M	PEACOCK @ FOUNTAIN 5" BERRY BOWL, M	20
B	PEACOCK @ FOUNTAIN 5" BERRY BOWL, M	25	A	HOLLY 9" BOWL	40
P	BLACKBERRY BRAMBLE COMPOTE	35	M	ORANGE TREE 10" FOOTED BOWL	90
M	BUTTERFLY & BERRY BERRY SET, 6 SMALL AND 1 LARGE	200			

RANDY PALMER, 1404 CHARLESTON, LEE'S SUMMIT, MO 64063 phone: 816-524-9213

A	GRAPE & CABLE TUMBLER	30	B	BLACKBERRY SPRAY HAT	30
B	ORANGE TREE BREAKFAST SET, 2 PIECES	100	P	STRAWBERRY 8" BOWL, M	45
B	PERSIAN MEDALLION BON BON	45	A	THREE FRUITS 5" BOWL, RUFFLED & FLUTED	25
P	GRAPE & CABLE 8 1/2" BOWL, RUFFLED, FENTON	40	M	GRAPE & CABLE 7 3/4" FOOTED ROUND BOWL	28
M	LUSTRE ROSE CREAMER & SPOONER, EACH	35	M	BUTTERFLY & BERRY MASTER BERRY & 4 SMALL, FOR ALL	110

JAMES & JUDY KEY, RT. 1 BOX 153B, MARIANNA, ARK 72360 phone: 501-295-6770

RED	ACORN BOWL, ROUND	475	RED	ACORN BOWL, RUFFLED	500
M	LEAF RAYS NAPPY	55	RED	OPEN EDGE BASKET	250
M	MINIATURE BLACKBERRY COMPOTE	375	P	MINIATURE BLACKBERRY COMPOTE	45
M	BUSHEL BASKET, 8 SIDED	140	M	THREE FRUITS BOWL, SPATULA FOOTED	40

KEN OSSON, 34931 SE DODGE PARK, BRESHAM, OR 97030 phone: 503-663-4433

PO	FLOWERS & FRAMES 9" BOWL	68	M	WINDFLOWER 9" BOWL	27
M	DOUBLE STEM ROSE 9" BOWL	25	B	HOLLY & BERRY 9" BOWL	55
P	GRAPE & CABLE BUTTERDISH	285	P	PITCHER & THREE TUMBLERS	285
M	GRAPE & CABLE PITCHER & 6 TUMBLERS, DARK COLOR	390	B	STORK & RUSHES TUMBLERS, HAVE 5, EACH	22
RED	HOACSA WHISKEY DECANTER & 5 SHOT GLASSES	190	RED	HOACSA 1978 CORN VASE	50

AL SEBAUGH, 9116 FORT DONELSON DRIVE, ST. LOUIS, MO. 63123 phone: 314-843-6122

TEAL	LOUISA FOOTED CANDY BOWL, FLAKE ON A SCALLOP	30	TEAL	#270 COMPOTE, WESTMORLAND	40
A	GRAPE & CABLE SWEETMEAT, ONE TOOTH CHIP	15	G	GRAPE & GOTHIC ARCHES COV. SUGAR, FINIAL WORN	15
M	GRAPE & CABLE TUMBLER	15	M	GRAPE VINE LATTICE 7" PLATE	30
M	STREAM OF HEARTS COMPOTE, HARD TO SEE CRACK	10	B	ORANGE TREE FOOTED BOWL, TWO BAD FEET	20
VAS	ORANGE TREE MUG	150	M	CIRCLED SCROLL TUMBLER	345

OMER E. SWEENEY, 28 ESMOND STREET, ESMOND, RI 02917 phone: 401-231-4108

DELOURIS CRAFT, 702 BRADLEY DRIVE, BLOOMINGTON, IL 61701 phone: 309-662-3610
 P IMPERIAL HEAVY GRAPE CHOP PLATE 320 M 816 BASKETWEAVE BASE FOR PERSIAN GARDEN FRUIT BOWL 65
 G HORSES HEADS RUFFLED FOOTED DISH, PINHEAD ON 1 FOOT 135 A GRAPE & CABLE POWDER JAR, NO LID 35

COOLEY & MARGE MILLER, 7605 NW EASTSIDE DRIVE, KANSAS CITY, MO 64152 phone: 816-741-4635
 IB FINE CUT & ROSES ROSEBOWL, TINY CHIP ON FOOT 105 A FINE CUT & ROSES CANDY DISH 85
 B GRAPE & GOTHIC ARCHES 7 PIECE WATER SET 320 B ENAMELLED CHERRIES 7 PIECE WATER SET 300
 A AUSTRALIAN SWAN SMALL BOWL 40 A AUSTRALIAN KOOKABURRA SMALL BOWL 40
 M GOOD LUCK BOWL 95 M STAG & HOLLY LARGE ICE CREAM SHAPED BOWL 115
 M STAG & HOLLY LARGE RUFFLED BOWL 45 P IMPERIAL GRAPE WATER CARAFE 140

MARY WELCH, 213 ALEXANDER, SCOTIA, NY 12302 phone: 518-393-7748
 AMB OPEN ROSE ROSEBOWL, HAVE 2, EACH 45 AMB POINSETTIA MILK PITCHER 59
 M CARNIVAL HOLLY BOWL, 3/1 BORDER 25 B GRAPE & CABLE STIPPLED PUNCH CUP 15
 B PEACOCK & FOUNTAIN PUNCH CUP 25 ** SEND 2 STAMPS FOR LIST OF 350 ITEMS FOR SALE **

GERALD COLE, 503 ROANOKE, BLUE SPRINGS, MO 64015 phone: 816-229-0635
 P GRAPE & CABLE HUMIDOR, BEAUTIFUL 375 PO SKI STAR 10" COLLAR BASE BOWL 100
 BO DAISY WREATH BOWL (PLATE??) 425 B WILD ROSE OPEN EDGE BOWL, GOOD FEET 75
 M STORK & RUSHES TUMBLER, AIR BUBBLE ON TOP EDGE 18 P GRAPE & CABLE TANKARD WITH ONE JUMBO TUMBLER, CALL 565

JOHN MUEHLBAUER, 7051 LACOSTA LANE, CITRUS HEIGHTS, CA 95621 phone days: 916-355-2455, or nites: 916-723-2852
 AO HEARTS & FLOWERS COMPOTE, BEAUTIFUL IRIDESCENCE 300 IB HEARTS & FLOWERS BOWL 210
 M PEACOCK & FOUNTAIN FRUIT BOWL WITH SOFT PASTEL IRID 175 M POINSETTIA & LOTUS L6. FTD. BOWL, SUPER PASTEL IRID 110
 M FLUTE TUMBLER, FACTORY GROUND BASE 15

AURTHUR I. SMITH, 4535 HOLDR COURT, LAKELAND, FL 33803 phone: 813-644-4058
 CARNIVAL GLASS PAPER ITEM: WOMAN'S DAY MAGAZINE, AUGUST 1965 IN MINT CONDITION, FEATURES A DICTIONARY OF
 CARNIVAL GLASS ITEMS, 9 PAGE ARTICLE WITH 100 COLOR PHOTOS, I HAVE SEVERAL COPIES LEFT, GET THEM WHILE THEY LAST \$6.25 PPD.

BUZ CARTER, 813 HOYT AVENUE, EVERETT, WA 98201 phone: 206-252-8389
 B STAG & HOLLY ROSEBOWL, ONE OF THE 5 OR 6 KNOWN 595 PO HEAVY WEB BOWL, VARY RARE 595
 DM DIAMOND POINT BASKET, VERY RARE 625 B DIAMOND POINT BASKET, SMALL REPAIR & CHIP 200
 PO CAROLINA DOGWOOD PLATE, RARE 300 MMS CAROLINA DOGWOOD BOWL 295
 160 PEACOCK & GRAPE BOWL, RARE 595 160 BLACKBERRY SPRAY HAT SHAPE 275

MARTY SCHWETTLER, RD #3 - BOX 188, BENELL, NJ 08080 phone after 6PM: 609-589-4325
 PO FISHSCALE & BEADS BOWL, 2 SIDE UP 45 M POINSETTIA & LOTUS FTD ICE CREAM SHAPED BOWL 60
 M LION BOWL 100 A INVERTED STRANDBERRY LARGE BOWL 175
 B PEACOCK TAIL 9" BOWL 65 A THISTLE BOWL 45
 B THISTLE BOWL 45 B COIN DOT BOWL 40
 M OPEN ROSE LARGE BERRY BOWL 30 M WINDFLOWER BOWL 25

VALNER CROSS SR., PRATTSVILLE, NY 12468 phone: 607-588-6698
 M FASHION 7 PIECE WATER SET 275 M DOB COVERED POWDER JAR 20
 G RAYS, M, SUNDAE DISH, TINY CHIP 20 M PARSY CREAMER 20
 M WINDMILL 8" PLATE 20 PM VINEYARD TUMBLER 10
 M WIDE PANEL 8" PLATE 30 M SAHTRAY W/MATCH HOLDER 5
 M FASHION WATER PITCHER, CRACKED 25 M HAT, 2" TALL 10

BIL CORRIVEAU, BOX 5, STURBRIDGE, MA 01566 phone days: 617-347-3304, NIGHTS: 617-347-9930
 G SINGING BIRDS WATER PITCHER 275 PO FOUR FLOWERS 4 PIECE BERRY SET 175
 M VINEYARD PITCHER 75 B PAINTED CHERRIES 7 PIECE WATER SET 225
 M BASKETWEAVE 9" ICE CREAM SHAPED BOWL 100 B GRAPE & CABLE HUMIDOR LID-STIPPLED 150
 M GRAPEVINE LATTICE HAT SHAPE 45 PO SKI STAR LARGE BOWL 100
 B HLSBS HOLLY CARD TRAY 50 M LION BOWL 100

DICK WETHERBEE, 847 STAFFORD STREET, ROCKDALE, MA 01542 phone: 617-892-4420
 P FLOWERS & FRAMES 9" DOME FTD BOWL, BEAUTIFUL COLOR 75 B DRAGON & LOTUS 8 1/2" ICE CREAM SHAPED BOWL 58
 PO INDENTED SWIRL 6" VASE, DUBAN EXPERIMENTAL PIECE 95 VAG FENTONS OPEN EDGE BASKETWEAVE 6" DISH, 2 SIDES UP 38
 M SINGING BIRDS WATER SET, DEEP COLOR 365 B HLSBS GRAPE WREATH 7" BOWL, 4 LEAF CENTER, RADIUM 35
 B ORANGE TREE MUG, PRETTY 38 M PLAIN SHOT GLASS, UNUSUAL, BRILLIANT COLOR 18
 G TREE TRUNK, M, SQUATTY 8" VASE 28 PO FAN SAUCE OR GRAY BOAT, ALL 4 FEET PERFECT, NICE 95

DELORES T. VESPRILLE, 200 DAKE AVENUE, ROCHESTER, NY 14617 phone: 716-544-4698
 M GEORGIA BELLE FOOTED COMPOTE 60 M 4-7-4 PITCHER & 2 TUMBLERS, FLAKE ON RIM OF PITCHER 200
 PO FOLDING FAN COMPOTE 70 B PERSIAN MEDALLION 10" BOWL 75
 P GRAPE & CABLE FOOTED FRUIT BOWL 200 PO DOGWOOD SPRAY DOME FOOTED BOWL 105
 M SODA BOLD 7 PIECE WATER SET 425 M GOOD LUCK RUFFLED BOWL, BASKETWEAVE BACK 90
 M WREATHED CHERRY LARGE OVAL FRUIT BOWL 220 PO QUESTION MARKS FOOTED BOWL-BON 55

ALAINE M. PENNETTI, 23 NANCY LANE, FT. MEYERS BEACH, FL phone: 813-463-3918

B	CAPTIVE ROSE 9" PLATE	145	RED	FLORAL & OPTIC 9" BOWL, CHIP ON FOOT	300
PO	CHERRY 3 FOOTED BOWL, WHIMSEY SHAPE	150	A	GRAPE & CABLE PLATE, CHIP ON ONE SPATULA FOOT	95
A	WISHBONE 3 FOOTED BOWL	85	G	ACORN BURRS PUNCH CUP	40
A	ROSETTE BOWL, M	85	A	GRAPE & CABLE 7 PIECE BERRY SET, M. THUMBPRINT	265
M	SODA GOLD PITCHER, CHIP ON BASE	100	M	FISHERMANS MUG, MEDIUM COLOR	235

EVA BACKER, 12 SHERWOOD ROAD, WEST HARTFORD, CN 06117 phone: 203-233-3761 mornings or after 7PM

M	FENTONS LITTLE FLOWERS ROSEBOWL	65	M	MILADY POWDER JAR, COMPLETE	65
M	PALM BEACH SPOONER	90	PO	CAROLINE BOWL, CANDY RIBBON EDGE	50
M	VINTAGE POWDER JAR	60	M	OCTAGON TUMBLER, GROUND BOTTOM	35
M	FASHION WATER PITCHER WITH 5 TUMBLERS	200	CLEAR	ROCHESTER SHRINER CHAMPAGNE	90
M	WREATH OF ROSES ROSEBOWL, SUPER	50	A	GRAPE & CABLE WATER PITCHER	250

RICK KOJIS, 2020 SOUTH 80TH STREET, WEST ALLIS, WI 53219 phone AFTER 5PM: 414-327-0321

PO	DRAGON & LOTUS CANDY RIBBON EDGE BOWL	435	P	PEACOCK & FOUNTAIN BUTTERDISH	210
DM	HEARTS & FLOWERS COMPOTE	95	M	MLS86. PEACOCK & URN PROOF BERRY DISH, NO URN	65
B	BUSHEL BASKET, M	85	P	IMPERIAL GRAPE GOBLET	55
M	DRAPERY 8" VASE, N	60	IB	CONCAVE DIAMONDS TUMBLERS, EACH	25
A	MLS86. WHIRLING LEAVES BOWL, RADIUM FINISH	60	AO	TREE TRUNK STANDARD SIZE VASE, REALLY PRETTY	295

EDWARD L. HENDERSON, 1111 NORTH COLLEGE, STUTTGART, ARK 72160 phone after 8PM: 501-673-8757

A	PERSIAN MEDALLION RELISH DISH, MINUTE CRACK	15	A	PERSIAN MEDALLION RELISH DISH	25
M	ORANGE TREE PEDESTAL SAUCE DISH	15	M	NORTHERN STAR RELISH DISH	20
M	WINDMILL RELISH DISH	40	M	CARNIVAL HOLLY SHERBERT DISH	15
M	SMIRL RIB 10" VASE	40	P	"FENTON" GRAPE DECANTER, NO STOPPER	80
P	BASKETWEAVE 8" BOWL, N, CHIP ON BASE	25	M	FASHION 8 1/2" BOWL, IMPERIAL	20

BARBARA NELSON, RFD 4 - BOX 155, LACONIA, NH 03246 phone: 603-293-7246

M	BEADED BULLSEYE 8 1/2" VASE, SUPER COLOR	20	M	VINTAGE FERNERY, MEDIUM COLOR	40
B	VINTAGE FERNERY, GOLD & PURPLE IRIDESCENCE	50	G	LEAF CHAIN 8 1/2" RUFFLED BOWL	40
M	IRIS BUTTERMILK GOBLET, EXTRA NICE	55	M	SHELL & SAND BOWL, RADIUM TYPE FINISH	20
B	STORK & RUSHES TUMBLER, BEADED EDGE	25	HA	THREE FRUITS 9 1/2" BOWL, PINK & LAV IRID., FLAKE, N 30	
	PO SINGLE FLOWER 9" BOWL, ONE EDGE UP, ONE EDGE DOWN, CANDY RIBBON EDGE, OPAL COVERS MOST OF EXTERIOR	50			

MORENE CAMPBELL, BOX 107, OCTATE, NM 87734 phone: 505-666-2237

RED	PEACOCK & GRAPE 8" SPATULA FOOTED BOWL	475	RED	GRAPE & CABLE 6" BOWL	425
AO	PEACOCKS ON FENCE 8 1/2" BOWL, BUTTERSCOTCH IRI.	550	LAV	PEACOCKS ON FENCE PLATE	395
IG	PEACOCKS ON FENCE PLATE	265	B	STAG & HOLLY 11" ICE CREAM SHAPED FOOTED BOWL	195
P	GRAPE ARBOR 5 PIECE WATERSET	800	M	WISHBONE CHOP PLATE	500
M	ROSE SHOW BOWL, REAL FROSTY	250	M	HEAVY IRIS WATER PITCHER	345

ERNEST & LYDIA CAUDLE, RT. 1 - BOX 87, STATE ROAD, NC 28676 phone: 919-874-2519

EB	SINGING BIRD MUG	95	B	GARLAND ROSEBOWL	85
M	GRAPE DELIGHT FOOTED NUT BOWL, RARE	125	M	ENGRAVED GRAPE SMALL WATER OR JUICE SET, 7 PIECES	275
A	PEACOCK & URN 7 PIECE ICE CREAM SET, N, REALLY NICE	625	IG	BUSHEL BASKET, M, STRAIGHT SIDES	225
M	BUSHEL BASKET, M, STRAIGHT SIDES	65	M	SINGING BIRDS 6 PIECE WATER SETS	375
G	MLS86 PEACOCK & URN 10" BOWL, UNUSUAL COLOR	275	P	DANDELION MUG, M	250

RAY HITCHCOCK, RR 1 - BOX 301, WINTERSSET, IA 50273 phone: 515-462-2074

M	PEACOCK & DAHLIA 7 1/2" PLATE	130	M	DOUBLE STEM ROSE DOME FOOTED PLATE, SUPER	185
RED	BLACKBERRY OPEN EDGE 6 1/2" RUFFLED BASKET	260	IG	WIDE PANEL SIDE LILY	110
B	HORSES HEADS FOOTED NUT BOWL, RARE SHAPE	175	B	PEACOCK & FOUNTAIN COMPOTE	450
AO	LEAF & BEADS NUTBOWL, NH TINY PH 1 FOOT, VERY RARE	500	IG	BASKETWEAVE OPEN EDGE SQUARE BASKET, 7"	65
G	ROSLIND 10" BOWL, SUPER COLOR	125	M	BUSHEL BASKET, M, ROUND	185

CLIFF & APRIL DECKER, RD#1 - BOX 209, WHITNEY POINT, NY 13862 phone: 607-692-3762

B	GRAPE & CABLE BANANA BOWL	220	P	GRAPE & CABLE PLATE	95
A	MARILYN TUMBLERS, HAVE 6 @ \$125 EACH OR ALL FOR	650	PO	COINSPOT COMPOTE	35
P	PEACOCK P FOUNTAIN SUGAR WITH LID	100	M	MARYANN VASE	35
A	BLACKBERRY WREATH BOWL	60	P	GRAPE & CABLE 7 PIECE WATERSET, CRACKED, CALL	200
G	DOUBLE STAR PITCHER, BASE CHIPPED	50	G	SINGING BIRDS BERRY SET, 7 PIECES	310

SINGLETON & CHERYL BAILEY, PO BOX 95, LORIS, SC 29569

A	PEACOCK & URN 10 1/2" BOWL W/BEE	175	A	PEACOCK & URN W/BEE MASTER ICE CREAM BOWL	195
A	PEACOCK & URN MYSTERY RUFFLED BOWL	225	A	PEACOCK & URN COURTHOUSE SIZE "SHOTGUN" BOWL	295
A	PEACOCK & URN MYSTERY CRIMPED BOWL	195	M	PEACOCK & URN MASTER ICE CREAM BOWL, BASE ROUGHNESS	75
M	PEACOCK & URN W/BEE CRIMPED 10 1/2" BOWL	85	G	PEACOCK & URN MYSTERY BOWL	195
G	PEACOCK & URN COURTHOUSE SIZED "SHOTGUN" BOWL	295	G	PEACOCK & URN W/BEE 10 1/2" BOWL	175

** CARNIVAL GLASS WANTED ** CARNIVAL GLASS WANTED ** CARNIVAL GLASS WANTED **

M AL RETTKE, 14226 EAST 143RD LANE, BURNSVILLE, MN 55337 phone: 612-432-7489
P PEACOCK @ FOUNTAIN PUNCH BOWL (BOWL ONLY)
IB GRAPE & CABLE POWDER JAR LID (CAN USE 4)
P SINGING BIRDS BUTTER DISH
M, B WISHBONE COLLAR BASED BOWLS
S, B NORTHWOOD PEACOCK & URN MASTER I.C.

RICK KOJIS, 2020 SOUTH 80TH STREET, WEST ALLIS, WI 53219 phone: 414-327-0321
M ACORN BURRS PUNCH BOWL BASE ONLY
AD ACORN BURRS PUNCH CUP
IB ORANGE TREE PUNCH BOWL BASE ONLY
IB PEACOCK @ FOUNTAIN SPOONER AN/OR CREAMER

JOHN MUELBAUER, 7051 LACOSTA LANE, CITRUS HEIGHTS, CA 95621 phone days: 916-355-2455, or nites: 916-723-2852
S, IB ACORN BURRS PUNCH SETS
AD HEARTS & FLOWERS BOWL OR PLATE
M SUNKEN HOLLYHOCK GNTW LAMP TOP
M, H, G, AD EMBROIDERED MUSH BOWLS
MWB DRAGON & LOTUS OR PEACOCK & GRAPE BOWLS
S M's PEACOCK & URN LARGE ICE CREAM BOWL
AD GOOD LUCK PLATE
AD N's PEACOCK PLATE

JACK STEWART, 99 ASTER CIRCLE, WEYMOUTH, MA 02188 phone: 617-337-1304 ANYTIME
RED STIPPLED RAYS CREAMER
P, A SINGING BIRDS MUG--STIPPLED
PASTEL ORANGE TREE MUSH
M CANE WINE
M CHECKERBOARD WINE
P DIAMOND & SUNBURST WINE AND DECANTER
M FLUTE & CANE WINE AND CORDIAL
M 4-7-4 CORDIAL
M INVERTED FEATHER WINE
P SAILBOATS TALL GOBLET

BUD ASHORE, 6150 CRITTENDEN AVENUE, INDIANAPOLIS, IN 46220 phone: 317-255-3949
ANY ZIPPERED HEART PIECES

BARBARA E. ROME, SHOREHAM, VT 05770 phone: 802-948-2090
GREEN GRAPE & CABLE SHALL PUNCH BOWL BASE

BARBARA NELSON, RFD #4 - BOX 155, LACONIA, NH 03246 phone: 603-293-7246
IB FENTON 2 ROW OPEN EDGE BASKET - ANY SIZE OR SHAPE - WITH OR WITHOUT BLACKBERRY INTERIOR

GIL CORRIVEAU, BOX 5, STURBRIDGE, MA 01566 phone days: 617-347-3304, or nites: 617-347-9930
ICE GREEN WIDE PANEL EPERNE SIDE LILY

ERNEST & LYDIA CAUDLE, RT. 1 - BOX 87, STATE ROAD, NC 28676 phone: 919-874-2519
M ORIENTAL POPPY TUMBLERS, UP TO 5
A FLEUR DE LIS FOOTED BOWL
B PEACOCK @ FOUNTAIN TUMBLERS, UP TO 5
P WINDMILL TUMBLERS
LION BOWL
B PEACOCK @ FOUNTAIN BUTTER BOTTOM
M MAPLE LEAF BUTTER LID
G GRAPE & CABLE BUTTER BOTTOM
P ACORN BURRS BUTTER BOTTOM
P IMPERIAL FLUTE TUMBLER

JUDY KASPER, 2567 LOOMIS DRIVE, SAN JOSE, CA 95121
VERY UNUSUAL COLORS IN DRAGON & LOTUS BOWLS
IB BEADED CABLE ROSEBOWL
B, G PLAID BOWLS
NOTE: WE WOULD ALSO LIKE TO COMPARE NOTES WITH OTHER COLLECTORS IN THESE THREE PATTERNS:
BEADED CABLE ROSEBOWLS, DRAGON & LOTUS BOWLS, N's BUSHEL BASKETS. THANK YOU.

LOUIS T. BRADFORD, RT. #2 WEST, PADUCAH, KY 42086 phone: 502-488-3005
AO, B, TEAL BLUE CORN VASES OR ANY COLOR WITH A BEE ON IT
M, W FANCY HUSK CORN VASE
BROCADE

MARY HERREN, 520 SOUTH BERRY, MORGANFIELD, KY 42437 phone: 502-389-3121
M BASE FOR FASHION PUNCH BOWL
M 4-7-4 TUMBLER
TOP TO WHIRLING HOBSTAR PUNCH SET
M FLORAL & GRAPE TUMBLERS
HELLOS WINDMILL TUMBLER
M

JAMES & JUDY KEY, RT. 1 - BOX 1538, MARIANNA, AR 72360 phone: 501-295-6770
ANY ADVERTISING PLATES OR BOWLS

EVA BACKER, 12 SHERWOOD ROAD, WEST HARTFORD, CN 06117 phone mornings or after 7PM: 203-233-3761
M DIAMOND & SUNBURST STOPPER FOR WINE DECANTER
IB GRAPE & CABLE POWDER JAR LID
A DIAMOND & SUNBURST STOPPER FOR WINE DECANTER
A OCTAGON WINE DECANTER STOPPER ONLY

ALAINE M. PENNETTI, 23 NANCY LANE, FORT MEYERS BEACH, FL 33931 phone: 813-463-3918
DM OCTAGON WINE DECANTER STOPPERS ONLY, NEED 2
DM OCTAGON WINES, NEED 5

MRS. DONOVAN C. BUCK, 801 RANDOLPH, TOPEKA, KS 66606 phone: 913-232-5990
MARI GOLD OCTAGON BUTTER DISH AND/OR SUGAR BOWL

THE MELLO/LANINGHAM AUCTION, SEPTEMBER 28-29
by Al Rettke

The combined collections of the Mello's from California and the Laningham's from Texas provided one of the best auctions all year.

The New Philadelphia crowd wasted no time in getting with the program Friday night. Lot #25 blew an awful lot of people away when two Eastern collectors battled it out to the end, setting a new record of \$1900 for an ICE BLUE PEACOCKS ON THE FENCE PLATE!! This is really amazing when you stop and think of how many of these IB plates there are around, one sly old fox in Wisconsin has found two of these plates this year alone!

The highlights of Saturday were the very rare WHITE DANDELION TANKARD @ \$2000 and the ONLY KNOWN VASELINE BLACKBERRY BLOCK TANKARD @ \$5000. We will have a special focus article on PASTEL WATER PITCHERS by Don Moore in next months Bulletin. The following prices are courtesy of Lincoln Land Editor, RICK KOJIS.

LAV N-PEACOCKS BOWL 210, AD N-PEACOCKS BOWL 500, N-PEACOCK PLATES: IG 325, W 350, B 375, G 625, M 275
M DIAMOND POINT BASKET 400, G CORN VASE 375, A AGE HERALD PLATE 1500, A CONCORD PLATE 700, M TOWN PUMP 1000
W GRAPE & CABLE CRACKER JAR 525, B GRAPE & CABLE STIPPLED PLATE 400, M BEADED SHELL 7 PC WATER SET 700
M MILADY TANKARD 475, B FLUFFY PEACOCK PITCHER 650, PD HEAVY IRIS PITCHER 900, W GRAPEVINE LATTICE PIT. 850
IG GRAPE & CABLE 7PC TANKARD WATER SET 2400, POPPY SHOW PLATES: IB 600, M 350, B 375, W 325, G 1000
ROSE SHOW PLATES: IB 600, M 300, W 230, B 575, G PEACOCK @ FOUNTAIN PITCHER 1600, TUMBLER 450
P CHRISTMAS COMPOTE 1700, B SAILBOATS 6.5" PLATE 425, RED CARNIVAL HOLLY BOWL 635, W NIPPON PLATE 600
BLACKBERRY BLOCK TANKARDS: G 1000, A 900, PD APPLE BLOSSOM TWIGS 9.5" SMOOTH EDGE PLATE 475
MLSBG HANGING CHERRIES PITCHERS: M 650, G 700, A SEACAST PIN TRAY 325, P WISHBONE WATER PITCHER 1000
P FARMYARD CR EDGE BOWL 1900, W OPEN EDGE BLACKBERRY PLATE 400, B PETER RABBIT PLATE 2000, M CORAL PLATE 700
B LOTUS & GRAPE PLATE 625, SUPER PASTEL AD DRAPERY ROSEBOWL 400, W BEADED CABLE ROSEBOWL 600
IB FINECUT & ROSES ROSEBOWL 310, P SWIRL HOBNAIL ROSEBOWL 300, IB EMBROIDERED MUMS PLATE 875
G HEARTS & FLOWERS PLATE 625, B GOOD LUCK PLATE 475, AD THREE FRUITS PLATE 1050, AD THREE FRUITS BOWL 400
P GOOD LUCK BOWL 200, B AUTUMN ACORNS PLATE 650, G CARNIVAL HOLLY PLATE 400, IB GRAPE & CABLE SPOONER 200
ELK PLATES: B PARKERSBURG 900, B ATLANTIC CITY 600, ILLINOIS SOLDIERS & SAILORS PLATES: B 750, M 550
A ADVERT. PIECES: NORRIS SMITH PLATE 250, FERN BRAND CHOC PALTE 200, EAT PARADISE SODA PLATE 150
B STRAWBERRY SCROLL TANKARD PITCHER 2000, VAS CONCAVE DIAMONDS COVERED PITCHER 550, AD DRAPERY R.B. 250
AD BEADED CABLE ROSEBOWL 250, M WINE & ROSES DOME FTD PITCHER 425, W COSMOS & CAME TANKARD PITCHER 1200
W COSMOS & CAME TUMBLER 135, B MLSBG HANGING CHERRIES TUMBLER 170, W DANDELION TUMBLER 140, IB 100
