

H.O.A.C.G.A.  
BULLETIN SECRETARY  
AL RETTKE  
14226 East 143rd Lane  
Burnsville, MN 55337

\*\*\*\*\*  
FIRST CLASS MAIL  
\*\*\*\*\*

A SPECIAL FOCUS ISSUE

T H E T O P T E N

PASTEL WATER PITCHERS

by DONALD E. MOORE

STARTS ON PAGE 5

NOVEMBER 15 - 1984

S	M	T	W	T	F	S
	1	2	3			
4	5	6	7	8	9	10
11	12	13	14	15	16	17
18	19	20	21	22	23	24
25	26	27	28	29	30	



**Heart of America  
Carnival Glass  
Association Inc.**

**Membership June to May  
\$20.00 per couple or single**

**Published the 15th  
of each month**

**PRESIDENT**

**Cooley Miller  
7605 N.W. Eastside Drive  
Kansas City, MO 64152  
816-741-4635**

**VICE-PRESIDENT**

**Diane Treff  
13646 Leavenworth Road  
Kansas City, KS 66109  
913-721-2917**

**TREASURER**

**Karen Engel  
35292 Oak View Drive  
Brownsville, OR 97327  
503-466-5989**

**SECRETARY**

**Lucile Britt  
3048 Tamarak Drive  
Manhattan, KS 66502  
913-539-1933**

**BULLETIN SECRETARY**

**Al Rettke  
14226 East 143rd Lane  
Burnsville, MN 55337  
612-432-7489**

**All monetary figures quoted are in U.S. dollars.  
Please make checks for dues payable to H.O.A.C.G.A.  
and send them to the secretary as listed above.**

=====

**H.O.A.C.G.A. SOUVENIR REPORT**

=====

Our little souvenir table favor mugs for the 1985 convention have been made and delivered to us by the Mosser Glass Company of Cambridge, Ohio. They are dated "1985 Convention" on the bottom of the base. They are what Mosser calls the "Heatherbloom" color, a pinkish, lavender color. These mugs have fine iridescence and are very pretty. They made us 316 of these, which will be given as table favors at next years convention. As most of you know, these little mugs have been made for us since 1978, each year in a different color. They have been very popular with the club and its members.

We are also very excited about our HOACGA 1985 souvenir. The Fenton Art Glass Company will be making them for us. It will be a red carnival glass bell in the "Circle Scroll" pattern. Three of the scrolls will go around the bell, one of which will contain the portrait of HARRY NORTHWOOD. A series is planned for these bells, with next years souvenir using the portrait of FRANK L. FENTON, one of the founders of the Fenton Art Glass Company. We plan to follow on with the founders of the Millersburg and Imperial companies, and if things go well, we may cover Dugan-Diamond and even such famous carnival glass authors as Marion Hartung and Rose Presznick.

Some details such as the clubs logo, date, etcetera, are not completely worked out yet, but we are working on that phase of the project. The souvenir will carry the Fenton trademark. We will give you more on the details as soon as possible.

**JOHN & LUCILE BRITT**

\*\*\*\*\*

**TAMPA BAY CARNIVAL GLASS CLUB NEWS**

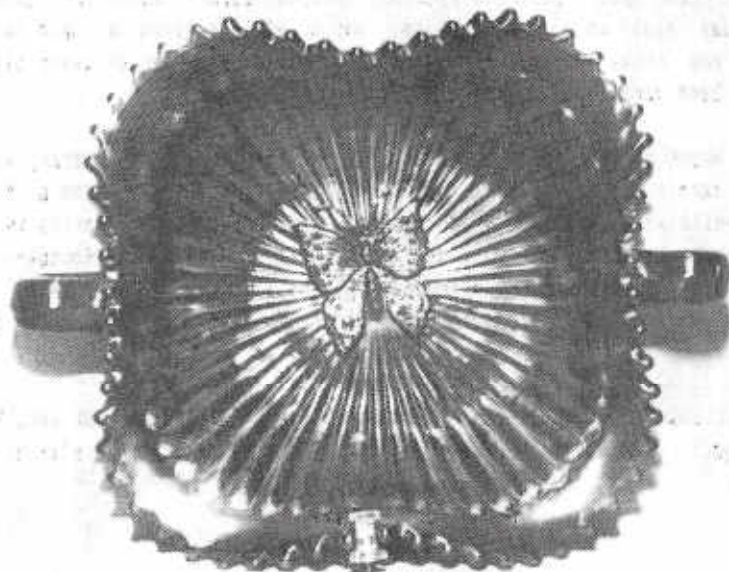
The TBCGC held its regular monthly meeting on Sunday, October 21 at the home of Gary Wilder in Clearwater, FL. The traditional buffet was served with Art Smith calling the meeting to order following the luncheon. Secretary Shirley Conyers and Treasurer Dorothy Smith gave their reports. It was announced that plans for the Fourth Annual "Lose Your Heart To Carnival Glass Jamboree" are near completion. All indications point to record breaking attendance. Brochures will be available after December 15th. Maria and Rick Vafiadis were appointed to head a special project committee for the Jamboree.

Gary Wilder led a very informative program on colors in carnival. Gary had previously contacted members to bring certain colors of glass and the result was the program was very well illustrated. The next meeting will be November 18th at the home of Nancy and Phillip Rayner in Clearwater.

**ARTHUR I. SMITH, TBCGC PRESIDENT**

## PICTORIAL PATTERN PARADE

by John & Lucile Britt



NORTHWOOD'S BUTTERFLY BON-BON

The different variations found in carnival glass patterns have always been amazing and interesting to us. Actually, there are hundreds of these variants throughout the entire carnival glass field.

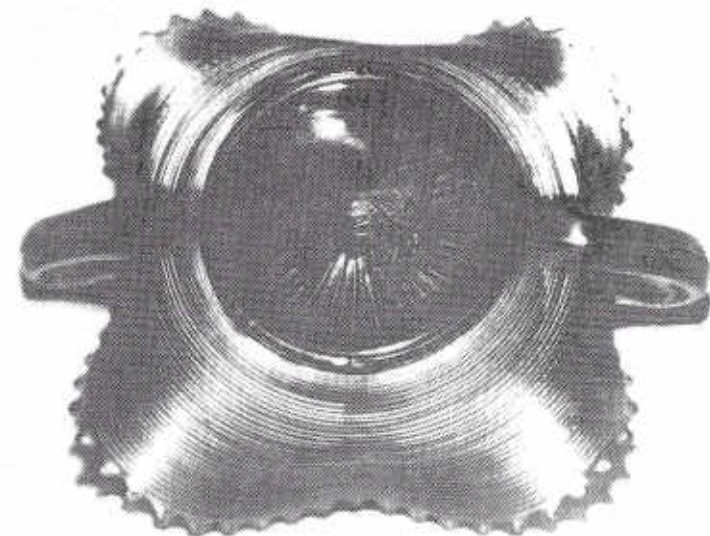
It is quite understandable why a different company would produce a somewhat varied version of a given piece of glass. It is less explainable, however, and certainly very interesting, why the same manufacturer would make these variations in the same piece of glass. We feature two of these variants in this article.

The beautiful handled "Northwood's Butterfly" bon-bons have a large butterfly in the center of the bon-bon. The butterfly sits on a background of alternating plain and stippled rays. Usually these bon-bons are plain or smooth on the reverse side. This one, however, has a circular threaded pattern on the back. Both types contain the underlined "N" in a circle pressed into center of the underside of the base. While this threaded type of bon-bon is most often seen in purple, the one shown here is electric blue. I have also seen three of these little gems in ice blue and they are considered very rare in that color.

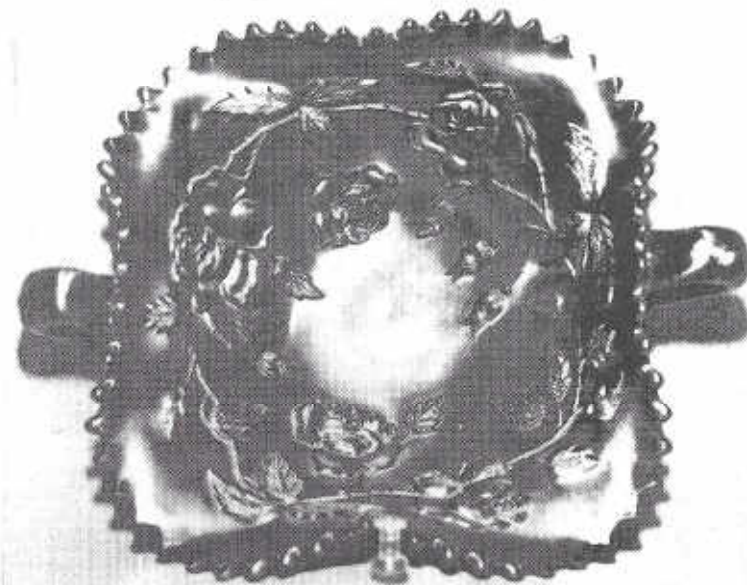
I have not seen any of these in aqua opal, white or pastel green, but it is certainly possible that they might exist. In any color, they are indeed a very fine piece of carnival glass and would add a lot of charm to any collection.

### UNUSUAL REVERSE PATTERN

ON NORTHWOOD'S BUTTERFLY BON-BON



### ANOTHER NORTHWOOD VARIANT



Here we show still another variant, Northwood's version of the Wreath of Roses bon-bon. It was interesting to read Lawrence Hartnell's article on this pattern in the September issue of the Bulletin. As he mentioned, it is sometimes called Basket of Roses and Northwood's Rose Wreath (the name recognized by most collectors). I have seen about a dozen of the purple bon-bons with the stippled background, so they are a scarce item. The purple one we show here is unusual in that it has no stippling at all, just a plain background. It would be my guess the this piece was originally produced with this plain background and the stippling was added to the mold later to make it more attractive. This is strictly a guess on my part, however. The back pattern of this piece, like the stippled version, carries the Basketweave with an "N". We thought that there might be some of you member collectors that did not know of these variations.

JOHN & LUCILE BRITT

## THE TOP TEN

### PASTEL WATER PITCHERS

by DON MOORE

The title suggests a bit of dichotomy in today's Carnival market place as water pitchers have been depressed but the popularity of pastels has never been greater. When a few of us so called "high rollers" knocked our heads together some 6 to 8 years ago, water pitchers outpaced the market and reached unrealistic prices. They had to level off and they did. I expect the pendulum has now swung the other way and on today's market they may be well underpriced when compared with other Carnival prices. There is every evidence this is correcting itself and that water pitchers are again off and running. It may well be that those high prices of a few years ago will look cheap before too much longer.

Much of this increased popularity has resulted from some rare finds in the past few months that has focused interest and attention on water pitchers. The Rineharts of Charleston, WV found the only known White Butterfly & Berry pitcher while the Hemms of Conrath, WI found the first confirmed Dandelion tankard in Ice Green. Of course, the most exciting news concerning water pitchers in many years was when the Strasburgers of Franklin, OH revealed the Lime Green Opalescent Footed Orange Tree Variant pitcher at the '84 ICBA Auction.

These remarkable finds have shaken the Carnival world and made it quite timely to take a fresh look at pastel water pitchers in general.

## THE TOP TEN

#1. LIME GREEN OPAL FOOTED ORANGE TREE VARIANT - FENTON, see Photo 1.

This recent find easily tops the list in my opinion. In fact, I feel it ranks high among Carnival rarities in general. The fact it is the Variant rather than the standard Footed Orange Tree pattern adds to the appeal. No tumblers in this color are known at present. While this pitcher is also very rare in White, it is not in the same league as the Lime Green Opal.

#2. VASELINE BLACKBERRY BLOCK - FENTON

Only the one example in vaseline is known and the White pitchers in this pattern are also very rare, but again, not in the same category. The Vaseline Blackberry Block sold on September 29 at the Mello auction for \$5000.



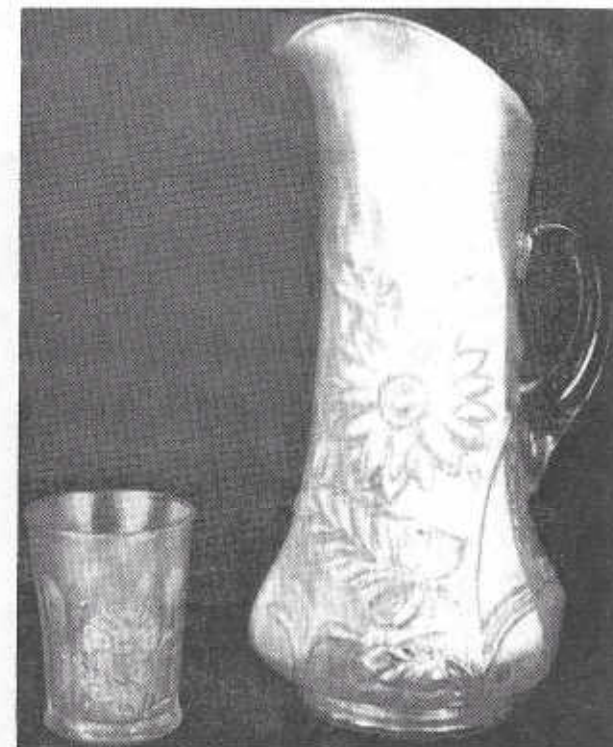
PHOTO 1 - LIME GREEN OPAL  
FOOTED ORANGE TREE VARIANT  
made by FENTON

#3. ICE GREEN DANDELION - NORTHWOOD. (Photo below is of Ice Blue)

This regal tankard is one of Northwoods finest products. The White pitcher would also easily make the Top Ten on its own merits, the last one in White to sell at auction brought \$2000. The Ice Blue is not in quite the same class as the other two but is VERY scarce. The Ice Green tumblers must also be classed as being rare.

#4. WHITE BUTTERFLY & BERRY - FENTON

It is hard for me to rank this pitcher, it is one of a kind due to its color. At the same time, it is a common pattern so its desirability and monetary value may be less than some with lower rankings. No White Butterfly & Berry tumblers are known.



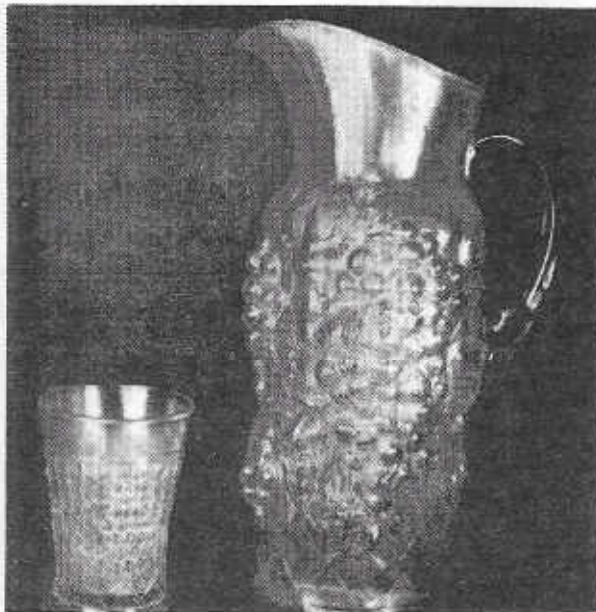
#5. ICE BLUE WISTERIA - NORTHWOOD  
(White Wisteria Shown)

I have always considered this pitcher to be the Cadillac of the pastel pitchers. I know of only 2 or 3 in Ice Blue and 5 or 6 in White. No Ice Green pitcher has surfaced but 6 Ice Green tumblers are known. One of these tumblers sold at auction recently for \$1800. A mint Ice Blue pitcher has not sold to my knowledge. In fact, I'm not certain a mint one exists! The two I have seen were both cracked. White pitchers have sold 2 or 3 times in the past few years in the \$2500 range. A mint Ice Blue Wisteria would certainly sell for \$3500 or more.



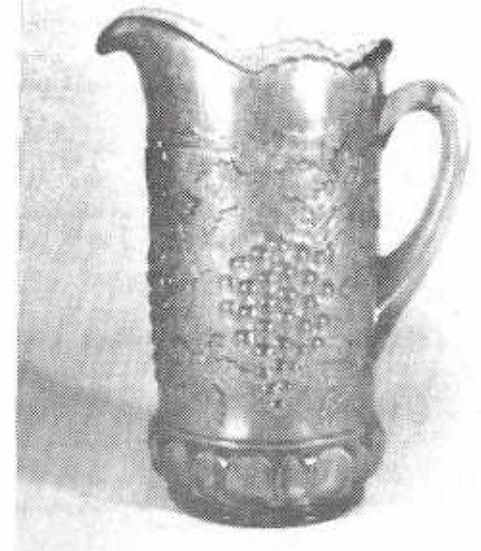
#6. ICE GREEN GRAPE ARBOR

This is perhaps the best known of the pastel water pitchers. The White and Ice Blue are both scarce and desirable but they are offered for sale from time to time. It is only the Ice Green that is extremely rare. I can confirm less than 6 of them whereas there are no doubt 25 or 30 in Ice Blue and probably more in White. A cracked Ice Green pitcher brought \$2450 at the 1977 Wishard auction. At the 1981 Miller-Mogg auction, one sold for \$2000. It could well bring twice that much in today's hot pastel market.



#7. ICE GREEN GRAPE & CABLE  
TANKARD - NORTHWOOD

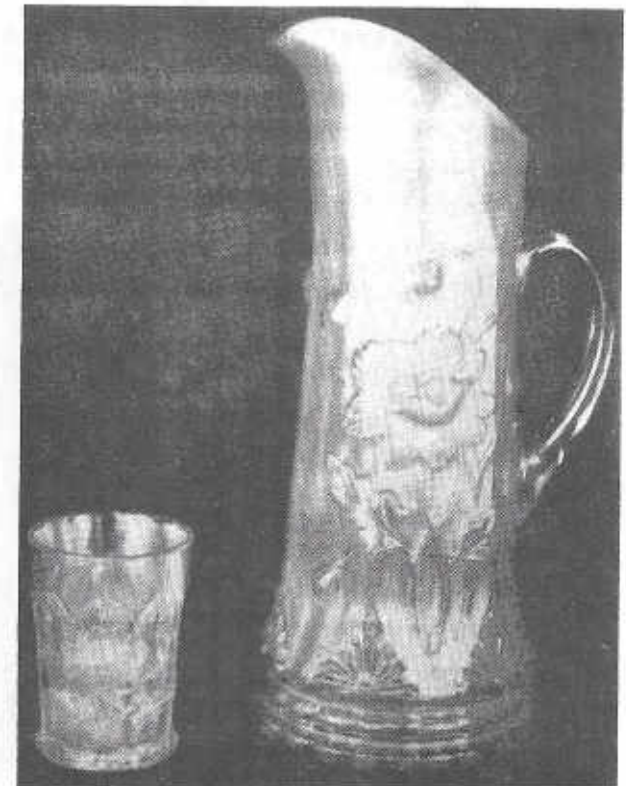
Only 3 or 4 of these Ice Green tankard pitchers are known. I can document three sales at auction in the past 10-15 years and at two of them it was the same pitcher changing hands. Though Northwood was King of the pastels, it is interesting that he made so few pastel G&C pitchers, and then only in Ice Green. No White or Ice Blue pitchers are known in either the tankard or regular size. The regular size Ice Green pitcher is also extremely rare.



#8. ICE GREEN ORIENTAL POPPY - NORTHWOOD.

This has always been one of the most popular water sets in all of Carnival, regardless of the color. In the pastels, the white can still be found, but the Ice Blue is very difficult and the Ice Green nearly impossible. One of the few I can recall selling in recent years was at the Miller-Mogg 1981 auction. It brought \$1600 and I'm grateful that Connie kept kicking me until I bought it.

I have since found that she was kicking me to get me to STOP bidding.



#9. ICE GREEN RASPBERRY - NORTHWOOD

Like most of the other Ice Green pitchers, these are seldom offered for sale. The only one to sell in recent years brought \$2050 at the Mello auction in 1983. The Ice Blue is nearly as rare and hard to find. A pitcher and 5 tumblers brought \$2250 at the Wallick auction in October of 1983. This pattern is also very rare in White.

#10. WHITE TEN MUMS - FENTON

The only pitcher to sell in the past few years was at the Hartung auction in 1983, it brought \$1100. It really is too bad this pitcher was not made in Ice Green or Ice Blue.

**\*\* TEN HONORABLE MENTION \*\***

There are 10 other pastel pitchers that are certainly scarce (if not rare) and they are listed below. I have attempted to put them in order of their importance and difficulty of obtaining.

1. White HEAVY IRIS - Dugan
2. White COSMOS & CANE - US Glass
3. White BLUEBERRY - Fenton
4. White ORANGE TREE ORCHARD Fenton
5. White & Ice Blue PEACOCK AT THE FOUNTAIN - Northwood
6. Vaseline CONCAVE DIAMONDS - Northwood
7. White ORANGE TREE VARIANT (or Scroll) - Fenton
8. White APPLE TREE - Fenton
9. White LATTICE & GRAPE - Fenton
10. White WREATHED CHERRY - Dugan

To the right:  
HONORABLE MENTION #2,

WHITE COSMOS & CANE - US GLASS

There are many other sets that could and should be mentioned even though they are less rare and maybe less desirable. Some of them are the white and ice green ZIG-ZAG, white DAHLIA, white BOUQUET, smokey SODA GOLD, white FLORAL & GRAPE, white GRAPEVINE LATTICE, clambroth LUSTRE ROSE, white PALM BEACH, smokey FIELD FLOWER, and the white PEACH.



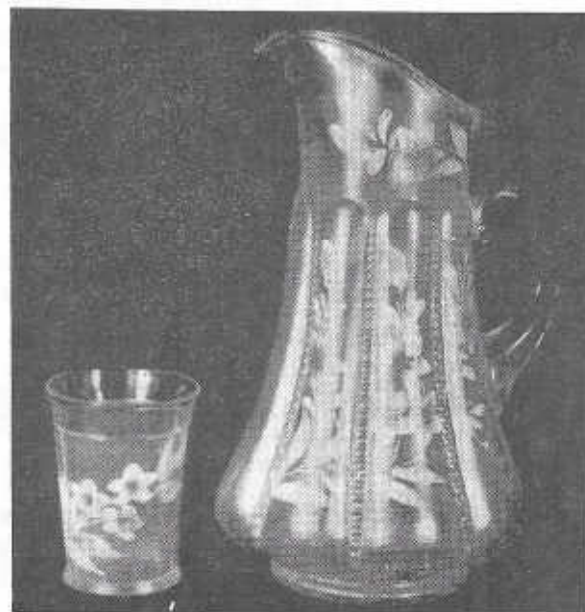
Though some may disagree, I also throw peach opal into the pastel category. Consequently, mention must be made of the VINEYARD and HEAVY IRIS pitchers that are known in this color. These are Dugan patterns.

Mention must also be made of the few decorated pitchers that are found in pastel colors. These too are hard to find with only 5 or 6 patterns known in ice green and about the same number in white. No ice blue sets are known to me. The unlisted white pitcher and tumbler shown in this photo are Northwood. The tumblers are all signed but the pitcher carries a number. This was sometimes the practice with Northwood's clear and non-carnival colored water sets. This is the first Carnival pitcher I have seen so numbered.

In conclusion, let me emphasize the extreme rarity of the ice green and ice blue water sets, with white not far behind. Not counting the decorated sets, 7 patterns were made in ice green, 8 in ice blue and 27 in white. I can confirm a TOTAL OF LESS THAN TWO DOZEN ICE GREEN WATER PITCHERS IN ALL PATTERNS. There are substantially more ice blue and many more white. Even so, pastel water pitchers are an endangered species. Those that have not already been captured and put into collections are destined to that fate in the near future. Gather a specimen or two while you can.

DON MOORE

BELOW: WHITE NORTHWOOD UNLISTED SET



BELOW: H.M.#10, WHITE WREATHED CHERRY



=====

THE CANADIAN CARNIVAL GLASS ASSOCIATION'S CONVENTION & SALE

=====

A beautiful crisp autumn weekend was the setting for the convention and sale on October 6 & 7 at Kitchner, Ontario. To add to the excitement, this was also Canada's Thanksgiving weekend as well as Oktoberfest in the area.

Things got underway Saturday morning with various displays of glass by the membership. These were on tables around a large room, protected with ropes. The displays were very much like ours in the US. The center of the room held tables of for sale glass.

The displays were judged and awards were given at the banquet that night. While the exhibits were only out one day, I feel more people saw them and were more able to compare them than when they are displayed in motel rooms.

The banquet Saturday night was a sell-out and the food was delicious. Bill Heacock was the speaker, his comments were well taken as was the question and answer session afterwards. The whiskeys were beautiful and sold well, from \$60-350. Drawings for the door prizes ended the evening.

Sunday morning Bill Heacock was busy with discussing and identifying glass brought in by members. The auction was conducted that afternoon, the glass was of good color and well presented. The pastels were in demand all the way. A local auctioneer, Jim Forbes (with assist from Tom Burns) did the selling. The sale lasted most of the afternoon, a few prices are below:

M-OCTAGON DECANTER 100, M-ROSE SHOW PLATE (FLAKE) 155, W-DRAPERY BOWL 130, AQUA-PINEAPPLE BOWL 215,  
M-KITTENS BOWL 125, W-DRAPERY ROSEBOWL 270, M-MIKADO COMPOTE 170, M-LIONS BOWL 110, P-WISHBONE FTD BOWL 110,  
W-PEACOCK & URN IC BOWL 125, M-TIGER LILY PITCHER 180, B-PERSIAN MEDALLION COMPOTE 175,  
W-BEADED CABLE ROSEBOWL 410, EB-EMBROIDERED MUMS BOWL 120, W-PERSIAN MEDALLION COMPOTE 400,  
IB-HEARTS & FLOWERS BOWL 500, P-MLSBG BLACKBERRY WREATH BOWL 110, PO-BEADED PANELS COMPOTE 170  
P-BEADED SHELL WATER PITCHER 530, BLACK-BLACKBERRY OPEN-EDGE RUFFLED BOWL 365

Attending the convention from the US were; M/M MEGAN and M/M WEDDING from Kentucky, M/M ANDRETTI and M/M SIMINDRINGER from Ohio, TOM BURNS from New York and ALLEN JONES from Virginia.

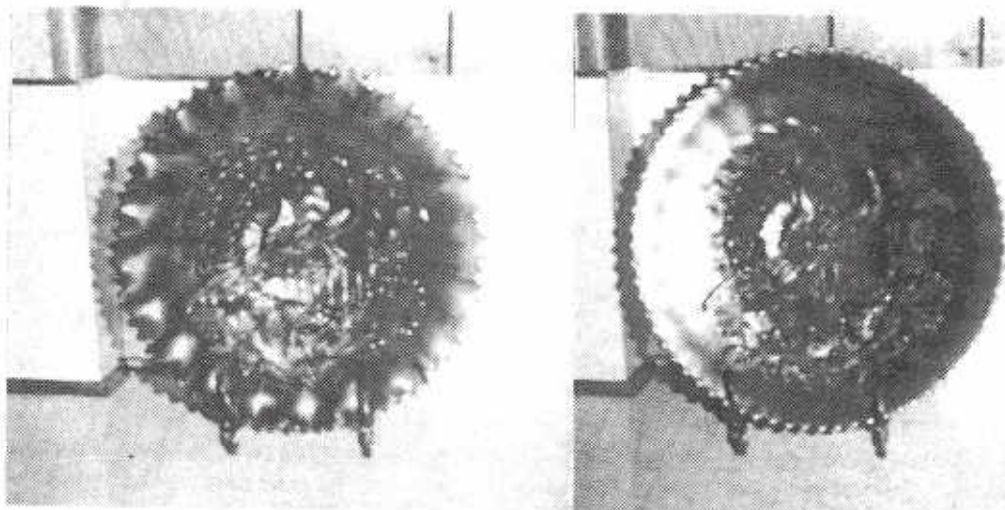
Congratulations to the Canadian Club for their Convention and Sale. Lots of planning and hard work resulted in a weekend we all will long remember.

DR. ALLEN JONES  
Bristol, Virginia

\*\*\*\*\*

RARITIES & SELDOM SEEN

by Ivan & Betty Mitchell



GREEN "NORTHWOODS PEACOCK" Bowl and Plate

The above bowl is seldom seen in green in the US and the plate is even harder to find. We do have knowledge of a number of the green piecrust edged bowls in Australia, but locating one here is difficult.

These two 9" pieces are in my favorite pattern in carnival glass, we presently own 10 pieces in this pattern, 6 plates and 4 bowls. The green bowl will sell in the \$300 range and the plate has sold as high as \$800 (for a super example at the 1983 Hartung estate auction). Smokey in this pattern is even more rare.

All in all, this is a perfectly balanced and beautiful pattern that many collectors rate #1.

\*\*\*\*\*

From JO & JACK SCHILBE:

Regarding the NORTHWOOD'S ROSE WREATH BON-BON, I have one in amethyst. It is one of the first pieces of carnival I bought. Got it in Michigan several years ago.

EDITORS COMMENT: I have recieved quite a number of responses to the request for furthur reports on this pattern and it now appears it is not as rare as presumed and a varient has turned up, see Britt's Pictorial Pattern Parade in this issue.

\*\*\*\*\*

## EDUCATIONAL TUMBLER SERIES

by John & Lucile Britt



### RISING SUN - A U.S. GLASS TUMBLER

The old United States Glass Company, maker of huge quantities of pattern glass, made only a small amount of iridised glass. "Rising Sun" is one of their pressed glass patterns in which they did make a small amount of carnival glass. The two most sought after carnival glass patterns made by U.S. Glass are the very rare "Butterfly" and "Frolicking Bears". The two U.S. Glass patterns most commonly found in carnival glass are "Palm Beach" and "Cosmos & Cane". Two other known U.S. Glass patterns, in which tumblers were made, are "Field Thistle" and a pattern known only as "U.S. Glass No. 6425".

The "Rising Sun" carnival glass tumblers are known only in marigold and blue. It is considered quite rare in marigold and very rare in blue. I know of only one pitcher and four tumblers in the blue color. U.S. Glass, in an old catalog, called this their "Sunshine" pattern and it was listed as No. 15110. I have seen a number of both table sets and water sets in clear crystal, sometimes gilded with gold and occasionally found in what is known as "Maiden Blush", a flashed on type light rose color. "Rising Sun" is a rather heavy tumbler that stands 4 1/8" tall. Three large rising suns are spaced around the upper portion of the tumbler. A pronounced horizon line separates these suns from the imitation cut hobstar design that is found below them. A twenty point sunburst type figure is pressed into the underside of the base.



THE VERY RARE "RISING SUN" PITCHER IN BLUE IS SHOWN WITH ONE OF THE FOUR KNOWN TUMBLERS ABOVE. This is #82 in this series on old carnival glass tumblers. Next month we will feature the "Apple Tree", an old pattern that was made by the Fenton Art Glass Company.

JOHN & LUCILE BRITT

\*\*\*\*\*

### AIR CAPITOL CARNIVAL GLASS CLUB NEWS

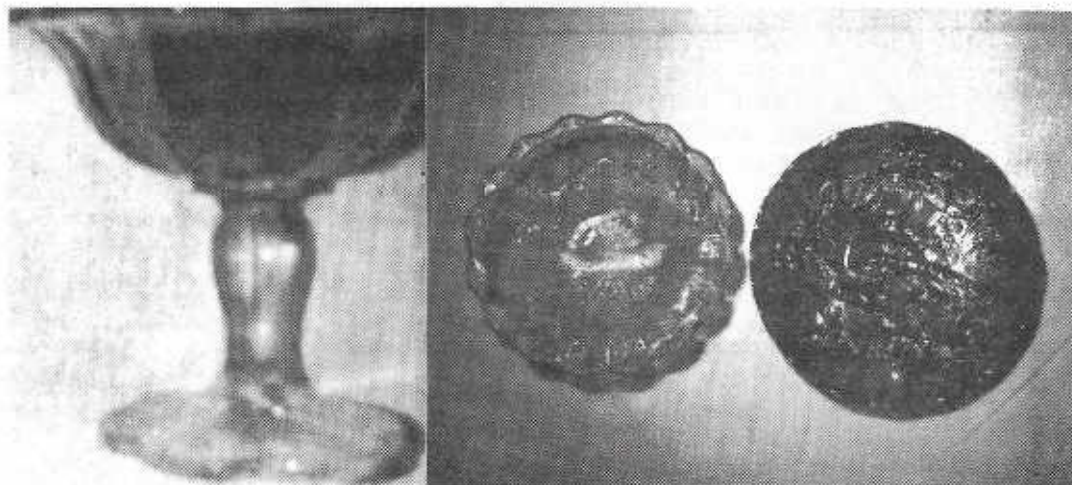
Our 3rd annual convention is now past history. We had a very good turn out and hope that everyone will come back to be with us next year. There were 76 attending the banquet. We all enjoyed the wonderful talk given by Ray Notley. He spoke on the life of the Northwood family as well as other subjects.

We want to especially thank those who donated the articles that were auctioned off at the banquet. A special thanks also to those spirited bidders who made the purchases. One would have to have been there to appreciate all the action that took place. You were all GREAT and we are very sincere when we say this.

The Saturday auction conducted by Tom Burns was very good, he had some fine pieces and fair prices were realized. There were 46 attending the Sunday breakfast. We look forward to seeing all of you next year. Thanks again everyone, you were great.

DONALD E. KIME, ACCGC Secretary





Shown above in the center is a rare bowl indeed. It is a 7 3/4" VASELINE BIG FISH BOWL! In all my years of Millersburg collecting, I haven't seen one like it before. It was found by Bob & Connie McMichael in Ohio. They were attending a tag sale and were only a few people in line ahead of another Millersburg collector when their turn came to go in. On the table they spotted a Millersburg Peacock & Urn Variant (the Mystery bowl) in amethyst marked \$65 and next to it the stunning Big Fish for \$18! Needless to say, they grabbed both!! When they got the bowls home they were a bit perplexed by the size of the Big Fish and talked to Jack Workman who suggested they call me. You can't imagine how thrilled I was for them when I received their call and the photos that followed.

In addition, I would like to report that I recently bought a MARIGOLD FLUTE COMPOTE WITH CLOVER LEAF BASE. It is shown at left above. There have been two others, one in marigold, the other in amethyst, but both of them were marked CRYSTAL in the interior of the bowl. My compote is not marked and has a very intense Radium finish on the interior while the exterior is plain. It is my "theory" that these were made in the few months that the Jefferson Glass Company had control of the factory in Millersburg before shipping the moulds to their Canadian enterprise. Just why the other two bear a marking and mine does not is a mystery.

Finally, I recently received a letter and photos concerning the first piece of iridized Millersburg Crystal I've heard about. It is a 6 1/2" Hobstar & Feather piece made from a flat plate but turned up to form a handleless spade shaped nappy. The feathers are frosted and the iridescence is reported to be on the inside, all pinks and pastel blues which would make this a very lovely item. In addition, I've had two phone calls from Green Bay, WI about a Millersburg BIG THISTLE ONE-PIECE PUNCHBOWL, slightly smaller than the two known. It was for sale in a shop, but when the person went back to get it, she was told it had been sold to a dealer. She is, needless to say, now trying to locate that dealer. Warmest Regards,

BILL EDWARDS, Rushville, IN

\*\*\*\*\*

Donald E. Moore and Sherman Hand, well-known authors and collectors of Carnival Glass Rarities, were among those honored recently at the Northern California Carnival Glass Club meeting in a "Salute To Past Presidents". Don Moore is the author of "The Complete Guide To Carnival Glass Rarities" and "The Shape Of Things In Carnival Glass", has written for most Carnival Glass publications and has had 5 cover articles in the "Antique Trader Weekly" (more than any other author). Sherman Hand authored the first four Carnival Glass books in color and in 1978, he published "The Collectors Encyclopedia Of Carnival Glass" with a price guide included.

Other past presidents of the NCCC honored by members were Ron Ferguson, Cliff Gaetzert, Paul Coletti, John Muehlbauer, Tony deLoura, Cliff Hoblit, Mable Sprain, Reo Nathan, Earhel Nance and Karma Vullo.

Under the leadership of these past presidents, the Northern California Carnival Glass Club has grown from a small group to approximately 240 enthusiastic Carnival Glass Collectors. For information on membership, write to Karma Vullo, 44762 Canellia Drive, Fremont, CA 94539.

\*\*\*\*\*

NEW ENGLAND C.B.A. "MINI-CONVENTION"

The Second annual Mini-convention of the N.E.C.B.A. was held September 7-9 in Sturbridge, MA. On Friday there was a Hospitality room where we hosted 30-40, on Saturday 22 displays and 12 rooms with for sale glass. From the comments overheard, the consensus was that it was nothing short of terrific. The banquet Saturday night was attended by 77 happy and well fed guests.

Unfortunately, Tom Burns had vehicle trouble and was late in arriving but with the help of many hands under the direction of Lynwood Hart, the auction got underway about 3PM. It was concluded about 8PM with good attendance and some spirited bidding.

I would like to give special thanks to EMMA TILTON who did a terrific job as speaker at the banquet. Emma was pressed into service at the last minute and really enlightened us all. "THANKS AGAIN, EMMA!!"

Next year, we are going to call it the N.E.C.B.A. CONVENTION and we have scheduled September 6-8 for the dates. Plans are being formulated to hold it in much larger quarters with better accommodations. I am sure those who attended this year are going to enjoy next years even more!

HOWARD D. ROBINSON, Convention Chairman

\*\*\*\*\*

## OLD CARNIVAL GLASS LIBRARY

CARNIVAL GLASS RARITIES-A color line approach. Lists the top 10 rarities in each color-plus complete rarities price guide-40 pages of black and white pictures-special section on whimsys-\$8.50 pp. Also THE SHAPE OF THINGS IN CARNIVAL GLASS, 110 pages, 200 items in full color-\$9.95. Don Moore, 2101 Shoreline Drive, Apt 462, Alameda, CA. 94501.

CARNIVAL GLASS SERIES-by Marion T. Hartung. Each book has 100 different patterns-10 books in the series, books 1,2 and 3-\$3.00 ea, books 4 thru 10-\$3.50 ea. 1981-82 price guide-\$5.00 pp, Northwood Pattern Glass-clear, colored, custard and caranival-\$9.95, plus .50 postage. Order from Ione Henshaw, 903 East 6th Ave., Emporia, KS 66801.

CARNIVAL IN LIGHTS-A full color book on Carnival Lighting, including Gone With The Wind Lamps, Candle Lamps and shades-price guide included-\$11.95 plus postage, Helen Greguire, 103 Trimer Road, Hilton, NY. 14468.

CARNIVAL GLASS TUMBLERS-Author Richard Owens-order from Don Brown, Wallace-Homestead Book Company, 1912 Grand Ave., Des Moines, IA. 50303.

THE STANDARD ENCYCLOPEDIA OF CARNIVAL GLASS  
REVISED EDITION NOW AVAILABLE, many new photographs and expanded European carnival section-\$24.95 (with new price guide), NEW PRICE GUIDE includes eight color columns, size Bx11 - \$4.95, IMPERIAL CARNIVAL GLASS-THE EARLY YEARS-\$9.95, FENTON CARNIVAL GLASS-THE EARLY YEARS-\$9.95, MILLERSBURG THE QUEEN OF CARNIVAL GLASS-\$8.95, NORTHWOOD, KING OF CARNIVAL GLASS-\$9.95, Bill Edwards Author, Collectors Books, Paducah, KY.

CARNIVAL GLASS--by Ray Notley, Shires Album # 104. ISBN 0 85263 637. Price is only \$3.55 including postage. Send to 7 Hills Books, 519 W. 3rd. Street, Cincinnati, OH. 45202.

CARNIVAL GLASS WORLDWIDE--by M. Quinton-Baxandale.  
200 Colour Photographs \* Pattern Name Index \* Exclusive Research \* Clubs Worldwide Listed \* Order from: CARNIVALIA PUBLICATIONS, PO Box 1, LOSTWITHIEL, CORNWALL, L22 0YZ, ENGLAND US \$13.50 (surface mail) US \$15.00 (airmail)  
Payment with order please, by International Cheque or Money Order.

FENTON GLASS-THE FIRST 25 YEARS-144 pages, 72 in full color, more than 400 items pictured in Fenton's carnival and iridescent "stretch" colors, rare catalogue reprints (some in color), a complete history of the factory's early years, from 1907 to 1932, \$15.95 for softcover edition with price guide, \$20.00 for limited edition hardbounds. Order from the author, William Heacock, P.O. Box 27037, Columbus, OH. 43227.

Angela Hallam's 52 page fully illustrated paperback-first book to tell about the English-made Carnival-\$3.35 surface postage, air mailed \$4.35 Order from Wise Books, 82 Chart Lane, Reigate, England, RH2 7EA.

CARNIVAL GLASS AUCTION PRICE REPORT-1984 Edition.  
This years edition will have approximately 4000 entries from major auctions in 1983. Single copy price is still \$8.00 US postpaid (for overseas delivery, add \$1.00). Order from: Al & Wendy Rettke, 14226 E. 143rd Lane, Burnsville, MN 55337

"Encore by Dorothy" books 1 and 2. A series of books on new reproduced Carnival Glass, giving information on the patterns and colors that are being reproduced. Price for each book is \$7.70 postpaid. Be sure to state which book you want.  
Dorothy Taylor, Box 11734, Kansas City, MO, 64138.

"CARNIVAL GLASS" educational brochure with color photographs. Available to interested collectors or dealers who wish to better describe to and inform the public about our glass. Free of charge from the American Carnival Glass Association. Contact Ruth Schinestuhl, P.O. Box 694, Absecon, NJ 08201.

POLICY FOR ADVERTISING IN THE H.O.A.C.G.A. BULLETIN

1. ALL ADVERTISEMENTS, ANNOUNCEMENTS, LETTERS OR ANY OTHER ITEM TO BE PRINTED MUST BE RECEIVED BY THE BULLETIN SECRETARY BY THE 1ST OF THE MONTH TO INSURE BEING PUBLISHED IN THAT MONTHS BULLETIN.
2. MEMBER FAMILIES MAY ADVERTISE 10 FOR SALE AND 10 WANT ADS PER MONTH.
3. ONLY OLD CARNIVAL GLASS ITEMS OR H.O.A.C.G.A. SOUVENIRS WILL BE PUBLISHED.
4. DAMAGE OR MANUFACTURING FLAWS SHOULD BE NOTED.
5. ALL FOR SALE ITEMS MUST BE PRICED, NO BID ITEMS WILL BE PUBLISHED.
6. A 5 DAY RETURN PRIVILEGE AT BUYERS EXPENSE PROVIDING IT IS NOT AS ADVERTISED.
7. ALL POSTAGE AND INSURANCE IS EXTRA, TO BE PAID BY BUYER.
8. ALL ADS MUST BE LEGIBLE, OR THEY WILL NOT BE PRINTED.
9. THE H.O.A.C.G.A. DOES NOT ACCEPT RESPONSIBILITY FOR THE ACCURACY OF ANY ADS.
10. THE BULLETIN SECRETARY RESERVES THE RIGHT TO EDIT SUBMITTED MATERIALS TO INSURE ACCURACY OR TO CONSERVE SPACE.

FOR ACCURACY OF DESCRIPTION, THE FOLLOWING COLOR KEY IS RECOMMENDED:

A--AMETHYST	G--GREEN	P--PURPLE
AMB--AMBER	HA--HONEY AMBER	PRL--PEARL-PASTEL ON MILK GLASS
AO--AQUA OPALESCENT	IB--ICE BLUE	PM--PASTEL MARIGOLD
AQUA--LIGHT BLUE-GREEN	IG--ICE GREEN	PO--PEACH OPALESCENT
B--BLUE	IGO--ICE GREEN OPALESCENT	R--RED
BO--BLUE OPAL OR BLUE OPAQUE	LAV--LAVENDER	RA--AMBERINA
CLM--CLAMBROTH	M--MARIGOLD	SM--SMOKEY
EB--ELECTRIC BLUE	MMG--MARIGOLD ON MILK GLASS	VAS--VASELINE

NOTE: IF YOU WISH TO DESCRIBE A PIECE AS LIGHT OR DARK, USE L OR D IN FRONT OF THE COLOR.

EXAMPLES:	AO	GOOD LUCK PLATE, ONE POINT BROKEN & REPAIRED	375.
	M	PEACOCK AT THE FOUNTAIN 7PC WATER SET, PITCHER HAS FLAKE	225.
	MMG	PEACOCK & GRAPE BOWL	360.
	LM	WISHBONE TUMBLER, HEAT CHECK	37.

IT WOULD BE GREATLY APPRECIATED BY EVERYONE IF YOU WOULD USE THESE CODES AS SUGGESTED.

\*\* GLASS FOR SALE \*\* GLASS FOR SALE \*\* GLASS FOR SALE \*\*

DM	STAG & HOLLY FOOTED ROSE BOWL	245	EARL LINDQUIST, BOX 165, CLARKFIELD, MN 56223 phone: 612-669-7361	25
B	JACK-IN-PULPIT RIBBED VASE, 5 1/2"	50	CLM JACK-IN-PULPIT RIBBED VASE, 5 3/4"	35
M	JACK-IN-PULPIT 5" VASE, HAND-PAINTED ROSES ON TOP	45	M JACK-IN-PULPIT RIBBED VASE, 6"	45
M	PALM BEACH SAUCE DISH, SUPER COLOR, GOLD TRIM, EACH	35	AO N'S PILLAR VASE, FLAKE ON 2 TOES, M	40
PO	CHERRIES BOWL, 3 FEET, C.R. EDGE STANDS STRAIGHT UP	45	M FINE CUT & ROSES ROSEBOWL, PINHEAD ON FOOT	95
			PO SKI STAR DONE FTD BANANA SHAPED DISH, LOTS OF OPAL	
M	GARDEN PATH VT. 6.5" PLATE, RARE, GLASS SHORTAGE	125	BURNEY TALLEY, 1814 SLATE HW, ALBUQUERQUE, NM 87104 phone: 505-242-1261	125
M	PEACOCK & GRAPE 9" FTD PLATE	135	P PERSIAN GARDEN 6.5" PLATE	325
G	PEACOCK & GRAPE RUFFLED BOWL, SUPER	75	A FIELDFLOWER PITCHER & TUMBLER (BASE FLAKE TUMBLER)	140
PO	QUESTION MARK COMPOTE, NO HANDLES	50	P SINGING BIRDS TUMBLERS, HAVE 3, \$90 EACH OR ALL FOR	40
G	MLSB6 COSMOS BOWL, RADIUM	45	PO STARFISH BON-BON, OPEN STRAW MARK	75
			B RIBBON TIE LOW RCE BOWL	
M	BEADED CABLE ROSEBOWL	475	GARTH L. IRBY, 4136 FILLMORE, ST. LOUIS, MO 63116 phone: 314-752-0160	275
MMG	SCALES BOWL	175	80 SCALES BOWL	225
P	GREEK KEY BOWL	65	P DANDELION MUG	115
VAS	CONCAVE DIAMONDS TUMBLER (FLAKE ON RIM)	130	M LION BOWL	
B	APPLE TREE TUMBLER	32	JERRY BLAKE, 1200 31ST STREET, WEST DES MOINES, IA 50265 phone: 515-225-3977	25
M	VINTAGE BANDED MUG	23	LM GRAPE LEAVES BOWL, M	10
B	OPEN EDGE BASKET, 2 EDGES UP	28	M FLORAL & OPTIC, ROUGH FEET	30
			M IRIS BUTTERMILK GOBLET	
A	HOLLY PLATE	225	JOHN MIKKONEN, RR #1 - BOX 474F, SHAKOPEE, MN 55379 phone: 612-445-6098	200
B	HOLLY PLATE, GREAT COLOR	175	G HOLLY PLATE	85
RED	WIDE PANEL GOBLET	100	M POPPY SHOW BOWL, SLIGHT DAMAGE	75
A	INVERTED STRAWBERRY TUMBLER	125	CB PEACH TUMBLER	75
G	PEACOCK & FOUNTAIN TUMBLER, POLISHED RIM	65	M MILADY TUMBLER	125
			G OCTAGON TUMBLER, RIM CHIP	

JACKIE TYLER, BOX 647, BALDIN, WI 54002 phone: 715-684-2397

AO	N'S THIN RIB VASE, SMALL CHIP ON FOOT	48.5	P	MAUTILUS, GORGEOUS, NO HARM SMALL CHIP UNDER BASE	100
M	LATTICE & GRAPE WATER SET, NICE	175	M	BUTTERFLY & BERRY 7PC BERRY SET, NICE	165
BO	SCALES BOWL, BEAUTIFUL	300	PO	FRAMED FLOWERS DEEP BOWL, SMALL FLAKE	35
G	IMPERIAL GRAPE DECANTER, NO STOPPER	45	G	PRIMROSE BOWL	95
CLM	NESTING SWAN BOWL, GORGEOUS	200	G	WHIRLING LEAVES BOWL, RADIUM	55

DENNIS KECK, 126 CHERRY STREET, PUNXSUTANNEY, PA 15767 phone: 814-938-7426

G	CAMBRIDGE #2351 PUNCH CUP, SEE *EDWARDS*, P.142	75	B	GRAPE & CABLE STIPPLED PUNCH CUP	70
IG	GRAPE & CABLE PUNCH CUP	65	M	GRAPE & CABLE PUNCH CUP	60
M	PEACOCK & FOUNTAIN PUNCH CUP	55	M	ROYALTY PUNCH CUP	20
M	FRUIT SALAD PUNCH CUP	15	P	STORK & RUSHES PUNCH CUP	15
G	IMPERIAL FLUTE PUNCH CUP	10	M	FASHION PUNCH CUP	10

TOM MORDINI, 36 NORTH MERMITZ AVENUE, FREEPORT, IL 61032 phone: 815-235-4407

AO	DANDELION MUG, BEAUTIFUL	500	AO	LEAF & BEADS ROSEBOWL, PASTEL	300
AMB	DRAGON & LOTUS BOWL, ICE CREAM SHAPE	175	M	FASHION ROSEBOWL, RARE	105
M	MLSB6 STRAWBERRY COMPOTE	105	M	IMPERIAL GRAPE 9" PLATE, FLAT	100
P	SCROLL EMBOSSED PLATE, SUPER	105	M	MLSB6 PEACOCK TAIL COMPOTE	65
B	FRUITS & FLOWERS BON-BON, N	75	P	SCALES 6" PLATE	45

D.M. EVANS, 617 EAST 18TH STREET, SOUTH SOUX CITY, NE 68776 phone: 402-494-5269

M	ACORN BURRS TUMBLERS, 1 HAS SM BASE CHIP, ALL 6 FOR 160	35	B	BEADED SHELL TUMBLER	35
A	BEADED SHELL TUMBLER	35	G	BEADED SHELL ROSEBOWL	40
G	LOGANBERRY VASE	145	M	KITTENS CUP & SAUCER	160
M	KITTENS CUP & SAUCER (CUP CRACKED)	100			

CHARLES PERRY, 8641 LAKESHORE DRIVE, SOUTHAVEN, MS 38671 phone: 601-342-1694

IG	BROCADED PALMS 7" PLATE	20	M	BEADED SHELL SPOONER	25
----	-------------------------	----	---	----------------------	----

ARVIN WOLFGANG, 1119 EAST MARQUETTE STREET, APPLETON, WI 54911 phone: 414-734-7075

RED	HOACGA 1977 HATPIN HOLDER & 1 HATPIN, HAVE 2, EACH 28	28	RED	HOACGA 1978 CORN VASE	40
-----	---	----	-----	-----------------------	----

RICK KOJIS, 2020 SOUTH 80TH STREET, WEST ALLIS, WI 53219 phone: 414-327-0321 AFTER 5PM

A	MLSB6 PEACOCK/URN 7PC BERRY SET, REAL PRETTY RADIUM 650	650	G	MLSB6 ROSTLAND 9" PLATE, VERY RARE	575
M	DRAGON & STRAWBERRY FTD BOWL, GORGEOUS	275	AO	PEACOCKS ON FENCE BOWL	495
VAS	STIPPLED RAYS COMPOTE	85	P	PERSIAN GARDEN 6" PLATE, RARE	295
PO	FISHNET EPERGNE LILY	65	AO	LEAF & BEADS ROSEBOWL	225
IB	PEACOCK & FOUNTAIN PUNCH CUP	95	A	JEWELLED HEART 6" PLATE, TIGHTLY CRIMPED EDGE	95

BUIZ CARTER, 813 HOYT AVENUE, EVERETT, WA 98201 phone: 206-252-8389 OR 206-659-3244

AO	PEACOCK & URN SMALL ICE CREAM BOWL, N	1200	B	BUTTERFLY & BERRY NUT BOWL (1 OF 5 OR 6 KNOWN)	725
M	BEADED SHELL MUG	130	A	SINGING BIRDS SUGAR LID ONLY	50
IB	NIPPON BOWL	130	M	BUSHEL BASKET, B SIDED	130
AO	POINSETTA BOWL (ONLY ONE KNOWN!)	4800			

MARY HERREN, 520 SOUTH BERRY, MORGANFIELD, KY 42437 phone: 502-389-3121

M	FASHION FRUIT BOWL (OR WILL BUY BASE)	20	A	VINTAGE PUNCH CUP	10
M	INTERIOR RAYS COVERED BUTTER	15	M	POINSETTIA MILK PITCHER, DEEP COLOR	65
LM	WAFFLE BLOCK HANDED BASKET, SMALL HEAT CHECK	12	A	VINTAGE/WIDE PANEL EXT 7 1/4" FLUTED DISH, MINT	25

GERDGE LOESCHER, 2420 PARK AVENUE, BELDITT, WI 53511 phone: 608-362-3104

IG	PEACOCK & FOUNTAIN PUNCH SET, 4 CUPS, 2 DAMAGED	2400	B	VINTAGE 7 1/2" PLATE	115
A	SINGING BIRDS MUG, LIGHT AMETHYST	80	IB	ACORN BOWL, 7 1/2"	100
PO	PERSIAN GARDEN ICE CREAM BOWL	300	B	PEACOCK & URN RUFFLED BOWL, FENTON	115
P	FASHION PITCHER, FANTASTIC IRIDESCENCE	825	G	SMALL BUZZ SAW CRUET, STOPPER MINT, CRACK @ HANDLE	300
PO	FOUR FLOWERS CHOP PLATE	550	AO	CORN VASE	2750

OWEN SWEENEY, 28 ESHOND STREET, ESMOND, RI 02917 phone: 401-231-4108

VAS	ORANGE TREE MUG	150	RED	BLACKBERRY SPRAY HAT SHAPE	250
P	GRAPE & CABLE BUTTERDISH	195	P	GRAPE & CABLE COLOGNE BOTTLES, EACH	235
P	GRAPE & CABLE DRESSER TRAY	235	M	GRAPE & CABLE WHISKEY GLASS	125
PO	FISHNET EPERGNE LILY	120	PO	FAN SAUCE BOWL, N	125
PO	SINGLE FLOWER FRAMED TRI-CORNERED 7" BOWL	125	M	MANY PANELS MEDIUM SIZED FUNERAL VASE, N	125

HELEN MADEAU, 18 THOMAS OLNEY COMMON, UNIVERSITY HEIGHTS, PROVIDENCE, RI 02904 phone: 401-521-4581 AFTER 3PM

M	STIPPLED RAYS 9 1/2" BOWL, M	25	M	PUZZLE STEMMED CANDY DISH	25
M	STIPPLED RAYS 8 3/4" FTD BOWL, FENTON	25	M	M PLAIN COMPOTE, BASKETWEAVE EXTERIOR	25
M	PANELLED HOLLY FOOT BON-BON	25	M	BOUQUET & LATTICE CONSOLE SET	25
A	COIN DOT 8 1/2" BOWL	30	A	STRUTTING PEACOCK SUGAR	30
G	LEAF & BEADS CANDY DISH	30	G	WILD ROSE OPEN HEART RIM	30

J. RICHARD BRANDT, 1313 CHURCH STREET, LITITZ, PA 17543 phone: 717-626-7393 AFTER 6PM

A	WISHBONE BOWL	60	M	TWO ROW OPEN-EDGE FENTON'S BASKET	70
AQUA	MATERLILY 5" FOOTED BOWL	145	B	TEN MUNS BOWL	85
G	THREE FRUITS DOME FOOTED BOWL	140	M	THISTLE BOWL	38
M	SUNFLOWER BOWL	35	B	LATTICE & GRAPE PITCHER, SILVER	210
A	PEACOCK & URN COMPOTE	55	M	DRAPERY ROSEBOWL	340

BARBARA NELSON, RFD 4 - BOX 155, LACONIA, NH 03246 phone: 603-293-7246

A	HOLLY SPRIG 8 1/2" C/R EDGE BOWL, RADIUM	55	AMB	CORINTH BANANA DISH, SUPER	60
B	TWO FLOWERS 10" FTD BOWL, SHALLOW ICE CREAM SHAPE	60	B	BLACKBERRY MINIATURE COMPOTE	45
PH	GREEK KEY 8 1/2" BOWL, B/W EXTERIOR, OUTSTANDING	75	M	ORANGE TREE GOBLET	15

WHITE ORANGE TREE ORCHARD TUMBLERS, 5 ARE EXCELLENT IRIDESCENCE & PERFECT PRICED AT \$125 EACH,  
ONE WITH MINERAL STAIN THAT LOOKS EXTRA FROSTY CLOSE UP @ \$50, SET OF SIX AT SPECIAL PRICE OF \$600

MARY WELCH, 213 ALEXANDER, SCOTIA, NY 12302 phone: 518-393-7748

P	GRAPE & CABLE MASTER PUNCH BOWL BASE	60	B	ORANGE TREE LID TO SUGAR BOWL	20
M	SPLIT DIAMOND COVERED BUTTER, SCARDE	55	P	SPRINGTIME CREAMER	95
M	PERSIAN GARDEN 6" ICE CREAM SHAPED BOWL	45	TEAL	LOUISA ROSEBOWL	45
M	KINGS CROWN WINE	10	G	HANGING CHERRY ML986 SUGAR LIDS, HAVE 2, EACH	15

SEND 2 STAMPS FOR LIST OF 350 ITEMS FOR SALE

MORENE CAMPBELL, BOX 107, OCTATE, NH 07734 phone: 505-666-2237

M	HORSE HEADS BOWL	72	M	DANDELION TUMBLERS, HAVE 2, EACH	43
M	HEAVY IRIS PITCHER, NICE COLOR, VERY ODD LAV BASE	345	M	HEAVY IRIS TUMBLER, PERFECT MATCH FOR PITCHER	45
M	JEWELLED HEART TUMBLER	70	P	FOUR FLOWERS 9" PLATE, RARE	375
P	DANDELION TUMBLERS, HAVE 2, EACH	67.5	RED	ORANGE TREE ROSEBOWL, SUPER, TIPS OF FEET SMOOTHED	540
PO	FOUR FLOWERS 6 1/2" PLATE, SUPER	140	B	PANTHER FTD SAUCE, SUPER	85

TED SHEIBLEY, 304A HILLCREST DRIVE, NEW CUMBERLAND, PA 17070 phone: 717-938-6417

G	TROUT & FLY FLUTED BOWL	310	M	SPRINGTIME SUGAR BASE	25
M	DIAMOND (MLS86) TUMBLERS, HAVE 2, EACH	25	G	HOLLY 9" BOWL	45
A	PEACOCK & GRAPE 9" COLLAR BASE BOWL	50	G	STRAWBERRY 9" FLUTED BOWL	60
M	HORSES HEADS BOWL, JACK-IN-PULPIT SHAPE	90	B	ELKS 1911 ATLANTIC CITY BOWL, ROUND	300
B	THISTLE 9" BOWL, CANDY RIBBON EDGE	45			

WES & BETTY STRAIN, 832 CARSON ROAD, ST. LOUIS, MO 63135 phone: 314-524-5608

A	VINTAGE WINE	30	M	FISHERMAN MUG	225
M	APPLE TREE TUMBLER	125	M	BEADED CABLE CANDY DISH	30
M	FINE CUT & ROSES CANDY DISH, FANCY INTERIOR	75	M	MLS86 CHERRY SAUCE	30
G	BULLS EYE & LEAVES BOWL	35	M	WINDMILL MILK PITCHER, SUPER COLOR	75
G	OPEN ROSE PLATE	65	M	BLOCKED PANELS TUMBLER	100

ELLEN HERR, TR #1 - BOX 87, CONRATH, WI 54731 phone: 715-532-5816

M	PANTHER MASTER BERRY	90	M	STAR & FILE COMPOTE	45
M	SODA GOLD PITCHER	130	M	DIAMOND & SUNBURST WINES, EACH	22
M	BUTTERFLY & BERRY CREAMER	50	M	SINGING BIRDS SUGAR WITH LID	80
M	PEACOCK & URN COMPOTE	35	RED	HOAC6A LOVING CUP	35
N	PEACOCK & FOUNTAIN 7 PC BERRY SET	175			

HARM WESTERHUIS, RR #1 - BOX 49, PLATTE, SD 57369 phone: 605-337-3631

M	STREAM OF HEARTS COMPOTE	50	M	GRAPE & CABLE BUTTER DISH	100
M	IMPERIAL GRAPE DECANTER	45	P	IMPERIAL GRAPE DECANTER	85
P	WREATHED CHERRY WATER PITCHER	250	B	CHERRY CHAIN 5 1/2" BOWL	50
B	WREATH OF ROSES PUNCH CUPS (GRAPES)	20	B	ORANGE TREE POWDER JAR	50
M	ORANGE TREE SUGAR BOWL	75	M	APPLE BLOSSOM BOWL, SHAPED LIKE SM FRUIT BOWL	50

PAUL BERUBE, 11 DORIS AVENUE, TIVERTON, RI 02878 phone: 401-625-5303

DM	STAR & FILE SUGAR & CREAMER	50	M	ORANGE TREE PUNCH CUPS, HAVE 4, EACH	6
M	4-7-4 PUNCH CUPS, HAVE 3, EACH	8	G	MLS86 DIAMOND TUMBLER	30
B	STIPPLED RAYS SUGAR	18	M	THREE FRUITS 9" PLATE, M, GORGEOUS COLOR	60
P	GRAPE & CABLE PUNCH CUPS, GORGEOUS, HAVE 5, EACH	15	M	GRAPE & CABLE STIPPLED PUNCH CUP, M	8

DEAN & DIANE FRY, 5395 MIDDLETOWN ROAD, SAN DIEGO, CA 92109 phone: 619-272-1663

M	CONCORD RUFFLED BOWL, GORGEOUS	75	M	ROCOCO RUFFLED COMPOTE, EXCELLENT	35
G	FOOTED SHELL, LARGE SIZE	45	A	BEADED CABLE CANDY DISH, RAYED INTERIOR	60
M	PINEAPPLE FLUTED BOWL, RAYED INTERIOR	38	M	STRAWBERRY BOW-BON, PINK IRIDESCENCE	30
M	FROSTED BLOCK ROSEBOWL, SMALL SIZE	45			

O. "DEE" ESTEY, 4446 PAINTERS STREET, NEW ORLEANS, LA 70122 phone: 504-282-8031

A	PEACOCK & URN C/R EDGE BOWL, FENTON	90	A	STAR OF DAVID BOWL, IMPERIAL, EDGE ROUGHNESS	55
A	MLS86 DIAMOND TUMBLERS, HAVE 2, EACH	45	M	PANTHER SMALL BOWL, LIGHT COLOR	30
M	STORK & RUSHES 10" MASTER BOWL, 2 MINUTE EDGE NICKS	45	M	GRAPE & CABLE TUMBLER	20
M	TREE BARK TUMBLERS, DARK COLOR, HAVE TWO, EACH	6	M	MAPLE LEAF SHERBERTS, HAVE 5, EACH	20
M	PEACOCK & GRAPE 9" BOWL	55	M	DUTCH (WINDMILL) 8" PLATE	19

VALMER CROSS SR., PRATTSVILLE, NY 12468 phone: 607-588-6698

M	LEAF RAYS NAPPY	15	M	WIDE PANEL VARIENT #2 TUMBLER	5
M	BLOSSOM & BAND 5" BOWL	8	M	IRIS & HERRINGBONE TUMBLER	10
M	GOLDEN FLOWERS VASE	35	M	REX & 1/2" PITCHER	80
G	COIN DOT & 1/4" BOWL	25	M	STAR CENTER 8" PLATE	25
M	IRIS & HERRINGBONE WINE	15	M	"DOG" POWDER DISH	20

EDNA K. BURNS, 145 UNION STREET, SO. WEYNOUTH, MA 02190 phone: 617-335-3178

G	GRAPE & GOTHIC ARCHES COVERED BUTTER	250	M	PEACOCK & FOUNTAIN LARGE FTD FRUIT BOWL, M	160
M	FANCIFUL 8 1/2" ICE CREAM SHAPED BOWL	110	M	FANCIFUL 9" RUFFLED BOWL	100
16	THREE ROW OPEN-EDGED 8 1/2" ICE CREAM SHAPED BOWL	125	P	GREEK KEY 9" BOWL, BASKETWEAVE EXT.	65
M	ORANGE TREE LOVING CUP	120	M	GRAPE & CABLE MASTER ICE CREAM BOWL	85
SM	SODA GOLD CANDLESTICKS, THE PAIR	40	M	THREE FRUITS 9" PLATE, M	65

A.O. CROMER, 1150 NORTH TOPEKA AVENUE, WICHITA, KS 67214 phone: 316-262-1775

A0	LEAF & BEADS ROSEBOWL	200	M	DAISY BLOCK ROW BOAT	175
A0	BEADED CABLE ROSEBOWL	200	R	BLACKBERRY HAT	300
A0	DRAPERY ROSEBOWL	200	P	GRAPE & CABLE HATPIN HOLDER, M	185
	ONE PAIR OF GRECIAN URN VASES	300			

BARBARA BARKER, RT #3 - BOX 16388, SAVANNAH, MO 64485 phone: 816-662-2265

P GRAPE & CABLE DRESSER TRAY--BANDED

180

ARTHUR SMITH, 4535 HOLDR COURT, LAKELAND, FL 33803 phone: 813-644-4058

CARNIVAL GLASS PAPER ITEM: WOMAN'S DAY MAGAZINE, AUGUST 1965 IN MINT CONDITION, FEATURES A DICTIONARY OF CARNIVAL GLASS ITEMS, 9 PAGE ARTICLE WITH 100 COLOR PHOTOS, I HAVE SEVERAL COPIES LEFT, GET THEM WHILE THEY LAST \$6.25 PPD.

ROD & JOAN SUITFIN, 209 WEST PARK, ST. JOHNS, MI 48879 phone: 517-224-6209

M	MLS86 GRAPE WREATH 8" BOWL, RADIUM	45	M	ACORN BURRS PUNCH CUPS, SET OF 6	120
M	MLS86 BLACKBERRY WREATH 5" SAUCE, 3 FOR	120	A	MLS86 PRIMROSE 9" BOWL, RADIUM	70
A	MLS86 BLACKBERRY WREATH 9" BOWL, SATIN	65	B	LOTUS & GRAPE 80N-BON, SILVERY	45
A	MLS86 STRAWBERRY 10" BOWL	150		SASE FOR MILLERSBURG LIST	

DICK WETHERBEE, 847 STAFFORD STREET, ROCHDALE, MA 01542 phone: 617-892-4420 SASE FOR LONG LIST

M	STORK & RUSHES TUMBLER	18	M	SAILBOATS-6" SAUCE DISH	22
B	GOOD LUCK 9" BOWL, BRILLIANT COLOR	135	P	BULLSEYE & BEADS 8 1/2" VASE, 6" OPENING, STUNNING	38
G	GRAPE & CABLE 8 1/2" BOWL, BASKETWEAVE EXT.	42	G	ACORN BURRS MASTER BERRY & 4 SAUCES, SUPER COLOR	235
M	DRAPERY 7 1/2" VASE, SM FLAKE UNDER TOE, OUTSTANDING	25	M	KEEPING CHERRIES/WESTERN DAISY 8 1/2" DOME FTD BOWL	47
CLM	FROSTED BLOCK 6" ROSEBOWL, MADE IN USA, PRETTY	38	P	WISHBONE 8 3/4" FTD BOWL, A BEAUTY	75

\*\* GLASS WANTED \*\* GLASS WANTED \*\* GLASS WANTED \*\* GLASS WANTED \*\* GLASS WANTED \*\*

NANCE R. BLACKBURN, 25 TROY STREET, APPLECROSS, WEST AUSTRALIA 6153 phone: 09-364-3717  
ANY EMU OR KIMI PIECES, ANY SIZE, COLOUR  
WILL TRADE OTHER AUSTRALIAN PIECES

CHARLES PROPOT, 1005 PARK LANE, OSSEOLA, IA 50213 phone: 515-342-2697  
P FIELDFLOWER TUMBLERS

RUTH CLARK, 425 NW 103RD STREET, MIAMI SHORES, FL 33150 phone: 305-757-2561  
M MANY FRUITS PUNCH BASE

LARRY KEIG, 301 UNION STREET, FAYETTE, IA 52142

P SINGLE FLOWER FRAMED BOWL  
R,6 PULLED LOOP VASE, 11-12"  
B FANTAIL SMALL BERRY BOWL  
P LID FOR VINTAGE POWDER JAR

JACK STEWART, 99 ASTER CIRCLE, WEYMOUTH, MA 02188 phone: 617-337-1304 ANYTIME  
A INVERTED FEATHER SUGAR OR BUTTER M NEAR CUT SOUVENIR MUGS  
P OCTAGON WINE DECANTERS OR WINES M,6 HEART BAND MUGS  
R STIPPLED RAYS CREAMER M STOPPER ONLY FOR STAR & FILE DECANTER  
P ORANGE TREE MUG, EITHER SIZE RED SLAG ORANGE TREE MUG, EITHER SIZE

GUY HULETT, PO BOX 363, ANTRIM, NH 03440 phone: 603-588-6705 AFTER 6PM  
RED, AMBERINA ORANGE TREE SHAVING MUG GREEN STIPPLED SINGING BIRDS MUG

GARTH IRBY, 4136 FILMRE STREET, ST. LOUIS, MO 63116 phone: 314-752-0160 AFTER 6PM  
LION PLATES--ANY COLOR

M ROD & JOAN SUTFIN, 209 WEST PARK, ST. JOHNS, MI 48879 phone: 517-224-6209 AFTER 4PM  
W,M SPRINGTIME SUGAR, CREAMER, BUTTERDISH \*ANY\* COLOR HOLLY 5" COMPUTES  
MINIATURE BLACKBERRY COMPUTES \*ANY\* GOOD LUCK PLATES AND/OR BOWLS

WILLIAM CROWL, 2835 HOLLYWOOD BLVD., HOLLYWOOD, FL 33020 phone: 305-921-6009  
PO FRUIT SALAD PUNCH BOWL BASE RED REGAL IRIS G.W.T.M. TOP

DENNIS KECK, 126 CHERRY STREET, PUNXSUTANANEY, PA 15767 phone: 814-938-7426  
G GRAPE & CABLE CANDLESTICK M GRAPE & CABLE PERFUME STOPPER  
M GRAPE & CABLE COOKIE JAR LID G SPRINGTIME BUTTER LID  
B HOBNAIL BUTTER BASE G WISHBONE EPERGNE BASE  
G MLS86 CHERRIES SUGAR BASE P IMPERIAL GRAPE PUNCH BOWL BASE  
G BUTTERFLY & BERRY COVERED SUGAR AO EMBROIDERED MUGS BOWL OR PLATE

JACKIE TYLER, BOX 647, BALDWIN, NJ 54002 phone: 715-684-2397  
COBALT BLUE PERSIAN MEDALLION ROSEBOWL

M ELLEN HENN, RT.1 - BOX 87, CONRATH, NJ 54731 phone: 715-532-5816  
16 WATERLILY & CATTAILS BUTTER BASE 18 PEACOCK & FOUNTAIN TUMBLERS  
DANDELION TUMBLERS AMB STAG & HOLLY BOWL

MES & BETTY STRAIN, 832 CARSON ROAD, ST. LOUIS, MO 63135 phone: 314-524-5608  
W GRAPE & CABLE CRACKER JAR LID B CHERRY & CABLE BUTTER BASE  
A PEACOCK & URN COMPOTE, FENTON

A.O. CROMER, 1150 NORTH TOPEKA AVENUE, WICHITA, KS 67214 phone: 316-262-1775  
PO FISHNET EPERGNE BASE ONLY B PEACOCK & FOUNTAIN WATER SET

MARY WELCH, 213 ALEXANDER, SCOTIA, NY 12302 phone: 518-593-7748  
18 PEACOCK & FOUNTAIN SUGAR LID -OR- WILL SELL BASE

J. RICHARD BRANDT, 1313 CHURCH STREET, LITITIZ, PA 17543 phone: 717-626-7393 AFTER 6PM  
A, G, W, AMB WATERLILY 5" FOOTED BOWLS

EDNA K. BURNS, 145 UNION STREET, SOUTH WEYMOUTH, MA 02190 phone: 617-335-3178  
M MLS88 CHERRIES CREAMER, SUGAR BASE ONLY G GRAPE & GOTHIC ARCHES CREAMER  
G IMPERIAL GRAPE TUMBLERS, EMERALD GREEN, NOT HELIOS P HEAVY GRAPE SM. RUFFLED BOWLS, W. DUGAN'S COMPASS EXT.  
\*\*ANY\*\* HEARTS & FLOWERS COMPUTES EXCEPT M,W,B,IB,AD

DEAN & DIANE FRY, 5395 MIDDLETON ROAD, SAN DIEGO, CA 92109 phone: 619-272-1663

B PARKERSBURG ELK PLATE P SWAN NOVELTY  
A MLS88 PEACOCK 6" PLATE RED ORANGE TREE MUG, CHERRY RED  
B ROSE TREE BOWL M PEACOCK & DAHLIA PLATE  
\*\*ANY\* FENTON BUTTERFLY ORNAMENTS

OMER SWEENEY, 28 ESHOND STREET, ESHOND, RI 02917 phone: 401-231-4108  
P,M GRAPE & CABLE PIN CUP P,M GRAPE & CABLE PIN TRAY  
P GRAPE & CABLE PUNCH SET, WITH OR WITHOUT CUPS P,A GRAPE & CABLE STANDARD WATER PITCHERS  
\*\*ANY\* ROSE SHOW BOWLS OR PLATE  
P MANY FRUITS PUNCH BOWL BASE \*\*ANY\* TEAL PIECES

GEORGE LOESCHER, 2420 PARK AVENUE, BELLOIT, WI 53511 phone: 608-363-3104  
B PEACOCK & FOUNTAIN BUTTER BASE ONLY PO FISHNET EPERGNE BASE ONLY  
P TUMBLERS FOR HOLLY & BERRY (PANELLED) PITCHER, NEED 5 AD ACORN BURRS PUNCH BOWL TOP  
AD STRAWBERRY BOWL AD ANY LARGE VASE - PATTERN MATTERS NOT

AL RETTKE, 14226 EAST 143RD LANE, BURNSVILLE, MN Office phone: 612-853-6690 or call after 5PM: 612-432-7489  
A,P ACORN BURRS BUTTER LID IB GRAPE & CABLE POWDER JAR LID  
P,A PEACOCK & FOUNTAIN PUNCH BOWL TOP IG,M POINSETTIA BOWLS  
G,S PEACOCK & URN MASTER I.C., NORTHWOOD IB SUNFLOWER BOWL

APPLICATION FOR MEMBERSHIP

THE HEART OF AMERICA CARNIVAL GLASS ASSOCIATION, INC.

DATE \_\_\_\_\_  
NAME \_\_\_\_\_  
SPOUSE \_\_\_\_\_  
ADDRESS \_\_\_\_\_  
CITY \_\_\_\_\_ STATE \_\_\_\_\_  
ZIP CODE \_\_\_\_\_ TELEPHONE \_\_\_\_\_  
RECOMMENDED BY \_\_\_\_\_

Do you want your name in the directory? YES \_\_\_\_\_ NO \_\_\_\_\_

DUES ARE \$20.00 U.S. PER YEAR (JUNE to MAY with back-issues on request)

SEND DUES TO: H.O.A.C.B.A.  
LUCILE BRITT, SECRETARY  
3048 TAMARAK DRIVE  
MANHATTAN, KS 66502

A FEW OF THE BENEFITS OUR CLUB OFFERS:

The ONLY MONTHLY PUBLICATION on just Carnival Glass Collecting, keeping you informed of new discoveries and all of the current events. Members only may advertise, FREE OF CHARGE!!!

An exclusive PATTERN NOTEBOOK with yearly special inserts (ALL inserts are still available)

ANNUAL SOUVENIR AND CONVENTION WITH SOME OF THE GREATEST PEOPLE YOU CAN HOPE TO MEET!!

<<<<< JOIN TODAY >>>>>