

H.O.A.C.G.A.
BULLETIN SECRETARY
AL RETTKE
14226 East 143rd Lane
Burnsville, MN 55337

FIRST CLASS MAIL

H A P P Y H O L I D A Y S

DECEMBER 15 - 1984

S	M	T	W	T	F	S
						1
2	3	4	5	6	7	8
9	10	11	12	13	14	15
16	17	18	19	20	21	22
23	24	25	26	27	28	29
30/31						



Heart of America Carnival Glass Association Inc.

Membership June to May
\$20.00 per couple or single

Published the 15th
of each month

PRESIDENT

Cooley Miller
7605 N.W. Eastside Drive
Kansas City, MO 64152
816-741-4635

VICE-PRESIDENT

Diane Treff
13646 Leavenworth Road
Kansas City, KS 66109
913-721-2917

TREASURER

Karen Engel
35292 Oak View Drive
Brownsville, OR 97327
503-466-5989

SECRETARY

Lucile Britt
3048 Tamarak Drive
Manhattan, KS 66502
913-539-1933

BULLETIN SECRETARY

Al Rettke
14226 East 143rd Lane
Burnsville, MN 55337
612-432-7489

All monetary figures quoted are in U.S. dollars.
Please make checks for dues payable to H.O.A.C.G.A.
and send them to the secretary as listed above.

=====

HOACGA NOVEMBER MONTHLY MEETING

=====

At 2PM, November 25th, 1984, the monthly meeting was called to order by Vice President Diana Treff. Diana welcomed all members and thanked President Cooley Miller and his wife Marge for their generous hospitality in having the club meet at their home this month. Marge prepared a wonderful brisket and all present brought a covered dish, the meal was prior to the meeting.

The minutes of the October meeting were read Vice President Diana Treff and accepted as read. The Treasurers report was given as sent by Treasurer Karen Engel and also accepted as given.

Marge Miller reported for John & Lucile Britt that the 1985 souvenir sample would be ready January 1st. There was some discussion as to the total cost of the souvenir in relation to the selling price voted on in the October meeting. Vice President Diana Treff stated that the vote passed at the October meeting would stand as is unless the Board is notified of any other additional costs in making the souvenir. In the case of additional costs, the Board would notify the members present at the January meeting and open the topic for discussion.

Vice President Treff reported that we had 16 new members recruited in the month of October. As October was National Carnival Glass Month, all members who recruited a new member will receive a table favor mug from a previous year.

George McGrew reported on the progress of the 1985 convention and held a discussion for new ideas for the convention. Diana Treff will handle room display awards, she plans on having a ballot box in the lobby.

Marge Miller was appointed Chairman of the door prize program and reported that she had already acquired some nice prizes and that the drawings will be held periodically during the convention. Marge also requested that Vice President Diana Treff relay to the Board that she would like to acquire anything that the club has in it's inventory in the way of past years souvenirs for door prizes. Diana Treff agreed she would discuss this matter with her fellow Board members.

There will be no monthly meeting in December. The club is invited to the home of Glen & Jackie Fortney on January 27, 1985. There will be a pot luck meal at 12:30 followed by the meeting at 2:00. The address of Glen & Jackie is 404 Park Avenue, Buckner, Missouri 64016, their phone number is 816-249-5208.

Diana Treff wished everyone a very Merry Christmas and then accepted a motion made by George Bolles to adjourn the meeting, the motion seconded by Viola Shikles and the meeting was adjourned.

=====

GEORGE MCGREW, Secretary Pro-Tem

TO ALL CARNIVAL GLASS LOVERS AND COLLECTORS:

THE NEW ENGLAND CARNIVAL GLASS ASSOCIATION IS PLEASED TO ANNOUNCE OUR PLANS FOR THE THIRD ANNUAL CONVENTION, SHOW, SALE AND AUCTION SEPTEMBER 6-8, 1985

PLACE: THE QUALITY INN, CHICOPEE, MA., just off exit 6 of the Massachusetts Turnpike

SCHEDULE OF EVENTS: FRIDAY, SEPT. 6 - Registration & Hospitality
SATURDAY, SEPT. 7 - Show & Sale in the AM, Banquet in the PM
SUNDAY, SEPT. 8 - Auction in the Ballroom

The Inn has given us a package plan that includes 2 nights lodging, 2 breakfasts, 1 buffet luncheon and a buffet banquet for \$80.15 per person (tax and tip included).

For those of you who attended this years convention, the good news is that we have accommodations and facilities that we can really feel comfortable with. We are making this early announcement so that everyone interested can make plans to attend. As was the case last year, our convention will be that weekend before Brienfield.

We are sure looking forward to seeing you, HOWARD D. ROBINSON, Convention Chairman

NEWS FROM TEXAS

Although the meeting of the Texas Carnival Glass Club wasn't scheduled until Sunday, November 4th, members started showing up at the Holiday Inn in Athens on Friday so they could take advantage of the Canton Flea Market Trade Days. This is a large flea market which is held the first weekend of each month. Members shopped during the day and spent the evenings comparing purchases.

On Sunday, the club met for a buffet breakfast which was followed by a short business meeting called to order by President Don Staley at 9:30 AM. New members were introduced and welcomed. Minutes were accepted as printed in the Bulletin. With the absence of Cecil Whitley, no Treasurers report was given.

Members who attended the Air Capitol Convention reported on activities there. The sixth anniversary meeting of the club will be held in the Houston area during February 1985. Details will be announced later.

JANE BROWN, TCBC Secretary

PAGE 3

H.O.A.C.G.A. OCTOBER MONTHLY MEETING

On October 28, 1984, the Heart of America Carnival Glass Association meeting was called to order by President Cooley Miller. The meeting began at 2:00 PM at the Holiday Inn KCI.

The minutes of the previous monthly meeting were read by Vice-President Diana Treff. The minutes were amended to read "the next monthly meeting to be held OCTOBER 28, 1984, the original minutes posted the date as October 27th. With no further additions or amendments the minutes were approved as read. The treasurers report was read as received from Treasurer Karen Engel, accepted and placed on file.

President Miller stated that the club will again have preordering of the souvenir. A motion was made by Rosa Grissom to price the 1985 souvenir at \$35. Josie Katowitz seconded the motion, it was voted on and passed. A suggestion was also made to have the general membership vote on the following years' color of the Bell at the 1985 convention.

A motion was made by Marge Miller to print the complete set of rose bowl inserts this year, rather than publishing half and having to follow up with the second half in the next year. There will be approximately 90 rose bowls featured. The motion also states to print 600 sets of inserts which is a decrease in the amount from previous years. The motion was seconded by Diana Treff, the motion passed.

President Miller stated that the Holiday Inn management has been notified that we wish to have our 1985 convention here again. He stated that we would REQUEST the 1st through 3rd floors for the convention. Marge Miller stated that she had a key for one of the completed rooms, if any member present would like to view the new remodeling and decor.

Diana Treff made a motion that we adjourn the meeting. The motion was seconded by Rosa Grissom. The motion passed. Following the meeting, Harold and Glenn Fortney shared photographs of glass from the 1984 convention.

The next monthly meeting will be at the home of President Cooley Miller and his wife Marge. There will be a potluck dinner prior to the meeting at 12:30, the meeting to begin at 2:00 PM. The address is 7605 Eastside Drive, Kansas City, Missouri.

DIANA TREFF, VICE PRESIDENT

LUCILE BRITT, SECRETARY

To celebrate National Carnival Glass Month, Michael Basey once again had a beautiful display of glass in the antique candy case at MICHAEL'S HERITAGE FLORIST, located at 1900 Central Avenue, Kansas City, KS. The owners Michael and Terry Rebut stated that the display was well received and generated lots of inquires. The theme for the display was "Some Carnival Colors".

Thanks Mike, for your special efforts to promote the club. Thank you to all members who recruited new members during the month of October.

DIANA TREFF, VICE-PRESIDENT

PAGE 4

"LOSE YOUR HEART TO CARNIVAL GLASS!!"

The Tampa Bay Carnival Glass Club will hold it's FOURTH ANNUAL LOSE YOUR HEART TO CARNIVAL GLASS JAMBOREE on February 7-9, 1985 in Lakeland, Florida. The Jamboree will be held at the Huntly Inn with special rate of only \$40 double, \$36 single, children free. This rate is good for five days before and after the Jamboree.

An open house hospitality room will be held the evening of February 7. On Friday, the 8th, an outstanding program on Carnival Glass will run during the day. Rovene Heaton, Emma Tilton, Robert Vining, Lucile and John Britt and Bob Lovell will discuss various aspects of Carnival Glass collecting. Colored slide will accompany some of the talks. On Friday evening there will be a banquet featuring George Loescher as the guest speaker.

On Saturday, the 9th, the spectacular glass display will be a feature and all may buy, sell or trade Carnival. In the evening a major Carnival auction will climax the jamboree with Tom Burns, premier auctioneer, conducting.

Lakeland is ideally located within sixty minutes of Epcot Center, Disney World, Sea World, Circus World and is only fifty minutes from the Gulf coast resorts. Why not plan a Florida sunshine vacation and enjoy Carnival Glass Collecting at the same time?

For a brochure contact ARTHUR SMITH, 4535 HOLDER COURT, LAKELAND, FL 33803 or call 813-644-4058

The November meeting of the Tampa Bay Carnival Glass Club took on all the aspects of a Thanksgiving reunion with turkey highlighting the buffet and the return of Florence and Phil Graham from Indiana as well as Bea and Ed Deitz who drove 190 miles to the meeting. Nancy & Philip Raymer hosted the meeting at their lovely new home.

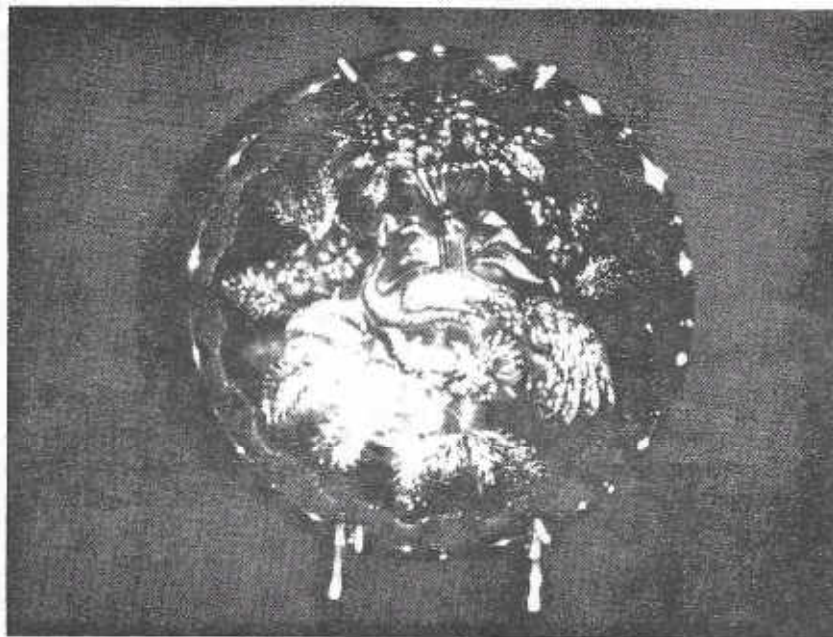
Arthur Smith presented a program on "The Shape of Things in Carnival Glass" with many pieces to illustrate the text. The annual Christmas party will be held December 16th at the home of Shirley & Maurice Conyers in Madeira Beach.

Arthur I. Smith, TBCGC President

PAGE 5

=====
R A R I T I E S & S E L D O M S E E N
=====

by Ivan & Betty Mitchell



PURPLE MILLERSBURG PEACOCK & URN MASTER ICE CREAM BOWL

This is one of the most beautiful bowls in our collection, it is a soft purple, almost pastel color of base glass with Radium finish. The Millersburg factory had its own methods of how to make a stunning piece.

This is shown in Edwards "Book of Rarities" on page 74 and he praises it very greatly. The example shown in the book is in the rare green color while this is the easier found purple. Don Moore lists this piece in his "Rarities" book on page 45 and the price of \$500 on page 70.

This bowl shown has no bee and no beading on the urn. It has the typical wide panel exterior and many rayed star on the base. It measures 9" in diameter and right around 3" high sitting on a flat surface.

PAGE 6

SOUTHERN CALIFORNIA CARNIVAL GLASS CLUB NEWS

The SCCGC met in Huntington Beach on Sunday, November 18th. A buffet luncheon was enjoyed by a large group of members before the meeting was called to order by President Charles Adams. Secretary Mallie Kieth gave her financial report and Vice President Valerie Light announced the program for our February meeting will be on red glass and the Hearts & Flowers pattern in observance of Valentines day.

The hosts for this meeting were Bob & Shirley Patterson. The topic for discussion and sharing was rosebowl, nut bowls and fernerys. Mike & Dee Sponsler brought a beautiful Hobstar & Feather rosebowl. Pattersons brought bowls found on a recent trip including two beautiful Leaf & Beads rosebowl in aqua opal.

Charles Adams announced that Cameo Shows in Los Angles has consented to a Carnival Glass Display at their January show. Since this is good exposure for our hobby, he asked participation of members in providing display pieces as well as contribution of time at the show for two days to answer questions and care for the display.

DIANE FRY

AIR CAPITOL CARNIVAL GLASS CLUB NEWS

We had a nice day and a good turnout for our Noveaber meeting, there were 13 members attending. We have already began plans for the 1985 convention, a full report will be given at the December meeting. A new roster is being worked on and should be out around January 1.

We were pleased with the growth of our club this year. During the few weeks before and during our convention, we gained 22 new members. This brings our total membership to 89.

Our December meeting is always well attended with a covered dish along with the meeting. This year Nola & Steve Guthrie will act as hosts. We usually have an election of officers at this meeting but at the November meeting the officers present were asked if they would continue for another year. A motion was made, seconded and carried that they would.

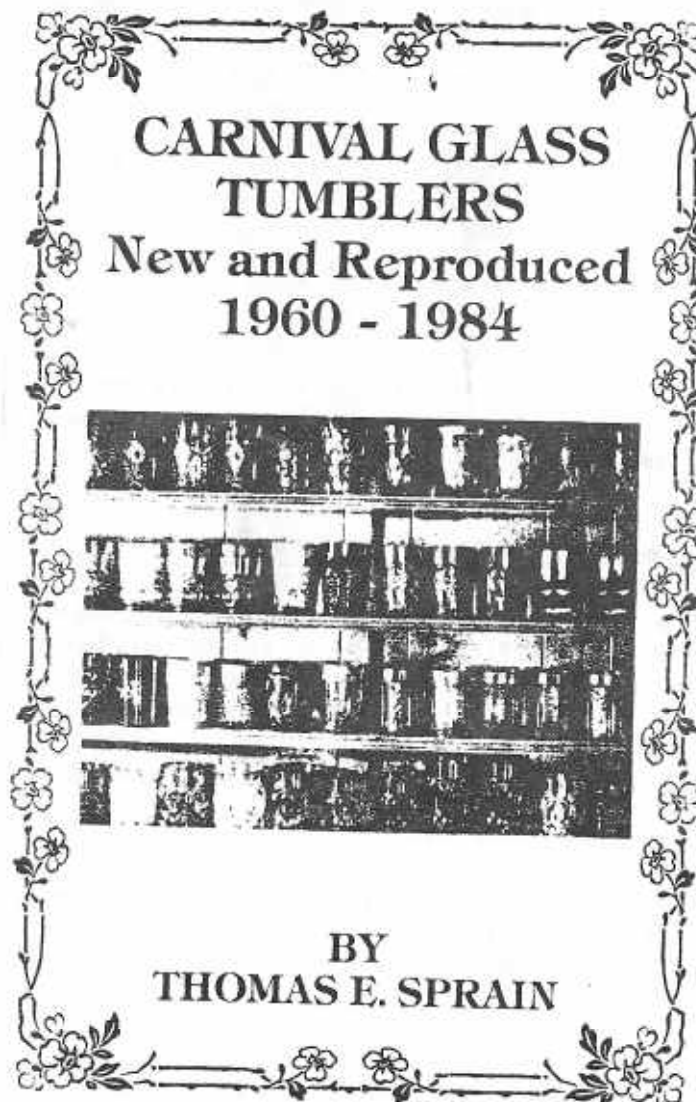
DONALD E. KIME, ACCGC Secretary

Our condolences and heartfelt sympathy go out to member ED LAMPERT of Souix City, Iowa.

His wife MARCELLA passed away on September 11, 1984 after a bout with cancer.

Ed and Marcella have attended all of our conventions in Kansas City for at least the last five years.

PAGE 7



CARNIVAL GLASS TUMBLERS,
NEW AND REPRODUCED 1960-1984

Describes new tumblers with black & white pictures and explains how to tell the new from the old. A chart showing colors and trademarks is included.

I have been encouraged by a lot of people to write this book and now with Don Moores help, I finally got it done.

This book will help old tumbler collectors and will hopefully inspire collectors to not be afraid to buy old tumblers if they can be assured that what they are buying is old.

TOM SPRAIN
240 Poplar Avenue
Millbrae, CA 94030

Copies are \$9.50 Postpaid,
order from the author.

PAGE 8

PICTORIAL PATTERN PARADE

by John & Lucile Britt



RARE FILE VASE (left), and scarce IMPERIAL'S #5 VASE (right)

The Imperial "File" vase is very seldom seen, I know of only three, but it is quite likely there are more out there. Whether this was an Imperial general line or some glassmakers whimsey, I am not quite sure. I would lean towards the whimsey as so few are known. It is quite possible that this piece could have been made from the "File" spooner of the table set. This vase is 5 1/2" tall and has a base diameter of 3 1/8". The top has six ruffles and is 4" across at the widest point. It is known only in marigold. This is not surprising, however, since the "File" table sets and water sets have also been reported only in marigold. This unusual and pretty vase was found by Elmer Gerding of Warrenton, MD.

Also shown above is another Imperial vase that is in the scarce category. This vase is sketched and described in Hartung Book 7, page 56 and list as "Imperial's No. 5". It was also listed as Imperial #5 in old Imperial catalog data. In Kamm Book 2, page 44, Mrs. Kamm lists this pattern as "Banded Fleur-De-Lis", which does describe the pattern well. The pattern has also been reported in a bowl and may also exist in other pieces.

This vase is a very deep marigold color, 6" high, 4" across the top and 3 1/2" across the base. The base is hollowed some and contains a raised 24 point rayed star on the bottom. Around the top of the piece is a raised ring and below that a 1/2" egg-and-dart band. The background consists of tiny raised star like figures that appear much like stippling. Six large Fleur-De-Lis designs form the main motif of the pattern. Webbing is found between the petals of the motifs. A diamond point band circles the center of the piece. It is a very attractive and unusual pattern that carries a lot of detail.

JOHN & LUCILE BRITT

EDUCATIONAL TUMBLER SERIES

by John & Lucile Britt



APPLE TREE TUMBLERS, IN THREE COLORS

The "Apple Tree" is a very fine tumbler that was made by the Fenton art Glass Company of Williamstown, WV. It has been reported only in marigold, Blue and White. You will find the White one is the hardest to locate. Perhaps a lavender tumblers might exist, but I have not seen one. I have never seen or heard of a "Apple Tree" tumbler in green or purple. The "Apple Tree" water pitcher is the bulbous type and when

combined with the tumblers, it makes a very striking set that any collectors would be proud to own. We think it is especially beautiful in cobalt blue with radiant iridescence. The "Apple Tree" is of standard size, about 4 inches high. The bottom of the collar base is smooth, having no star or sunburst design whatsoever. There are two bands of "I" shaped bark textured twigs that are bordered with cables. These bands are both above and below the fruit, leaves and limbs that form the central motif. A tumbler in the "Apple Tree" pattern would make a fine addition to any tumbler collection.



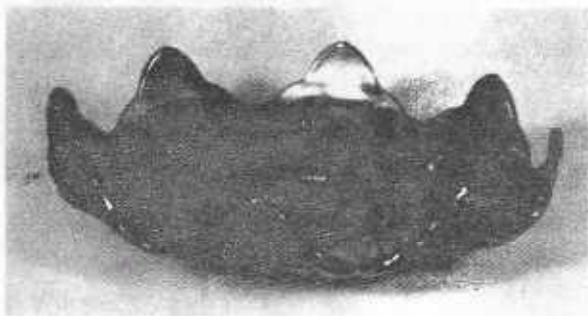
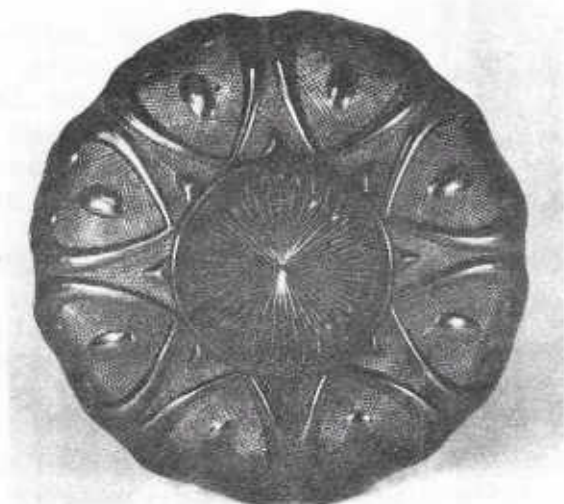
APPLE TREE PITCHER AND TUMBLER

The "Apple Tree" marks our eighty-third edition to this series. Next month we will cover a popular Imperial tumbler that is well known to carnival glass collectors as "Windmill". It is certainly one of the more common tumblers in marigold, but extremely rare in some colors, which we will cover in the next issue.

JOHN & LUCILE BRITT

Carnival Cameos

BY DONALD MOORE



ENGLISH OVAL & HEART

This is an interesting piece, it has been a difficult one to identify as it looks quite different as a bowl than it does in the compote shape shown in Rose Preznick's Book IV. She suspected it was English & named it accordingly.

She may well have been right but in the bowl shape it does not look English. It is on purple base glass with brilliant Tiffany iridescence on a smooth interior. The pattern is on the exterior which is not iridized. It measures 7 1/2" in diameter. While it has no great monetary value, the flat shape & pointed edge makes it a most attractive & unusual piece of Carnival.

PAGE 11

POLICY FOR ADVERTISING IN THE H.O.A.C.G.A. BULLETIN

1. ALL ADVERTISEMENTS, ANNOUNCEMENTS, LETTERS OR ANY OTHER ITEM TO BE PRINTED MUST BE RECEIVED BY THE BULLETIN SECRETARY BY THE 1ST OF THE MONTH TO INSURE BEING PUBLISHED IN THAT MONTHS BULLETIN.
2. MEMBER FAMILIES MAY ADVERTISE 10 FOR SALE AND 10 WANT ADS PER MONTH.
3. ONLY OLD CARNIVAL GLASS ITEMS OR H.O.A.C.G.A. SOUVENIRS WILL BE PUBLISHED.
4. DAMAGE OR MANUFACTURING FLAWS SHOULD BE NOTED.
5. ALL FOR SALE ITEMS MUST BE PRICED, NO BID ITEMS WILL BE PUBLISHED.
6. A 5 DAY RETURN PRIVILEGE AT BUYERS EXPENSE PROVIDING IT IS NOT AS ADVERTISED.
7. ALL POSTAGE AND INSURANCE IS EXTRA, TO BE PAID BY BUYER.
8. ALL ADS MUST BE LEGIBLE, OR THEY WILL NOT BE PRINTED.
9. THE H.O.A.C.G.A. DOES NOT ACCEPT RESPONSIBILITY FOR THE ACCURACY OF ANY ADS.
10. THE BULLETIN SECRETARY RESERVES THE RIGHT TO EDIT SUBMITTED MATERIALS TO INSURE ACCURACY OR TO CONSERVE SPACE.

FOR ACCURACY OF DESCRIPTION, THE FOLLOWING COLOR KEY IS RECOMMENDED:

A--AMETHYST	G--GREEN	P--PURPLE
AMB--AMBER	HA--HONEY AMBER	PRL--PEARL-PASTEL ON MILK GLASS
AD--AQUA OPALESCENT	IB--ICE BLUE	PM--PASTEL MARIGOLD
AQUA--LIGHT BLUE-GREEN	IG--ICE GREEN	PO--PEACH OPALESCENT
B--BLUE	IGO--ICE GREEN OPALESCENT	R--RED
BO--BLUE OPAL OR BLUE OPAQUE	LAV--LAVENDER	RA--AMBERINA
CLM--CLAMBROTH	M--MARIGOLD	SM--SMOKEY
EB--ELECTRIC BLUE	MMG--MARIGOLD ON MILK GLASS	VAS--VASELINE

NOTE: IF YOU WISH TO DESCRIBE A PIECE AS LIGHT OR DARK, USE L OR D IN FRONT OF THE COLOR.

EXAMPLES:	AO	GOOD LUCK PLATE, ONE POINT BROKEN & REPAIRED	375.
	M	PEACOCK AT THE FOUNTAIN 7PC WATER SET, PITCHER HAS FLAKE	225.
	MMG	PEACOCK & GRAPE BOWL	360.
	LM	WISHBONE TUMBLER, HEAT CHECK	37.

IT WOULD BE GREATLY APPRECIATED BY EVERYONE IF YOU WOULD USE THESE CODES AS SUGGESTED.

OLD CARNIVAL GLASS LIBRARY

CARNIVAL GLASS RARITIES-A color line approach. Lists the top 10 rarities in each color-plus complete rarities price guide-40 pages of black and white pictures-special section on whimsys-\$8.50 pp. Also THE SHAPE OF THINGS IN CARNIVAL GLASS, 110 pages, 200 items in full color-\$9.95. Don Moore, 2101 Shoreline Drive, Apt 462, Alameda, CA. 94501.

CARNIVAL GLASS SERIES-by Marion T. Hartung. Each book has 100 different patterns-10 books in the series, books 1,2 and 3-\$3.00 ea, books 4 thru 10-\$3.50 ea. 1981-82 price guide-\$5.00 pp, Northwood Pattern Glass-clear, colored, custard and caranival-\$9.95, plus .50 postage. Order from Ione Henshaw, 903 East 6th Ave., Emporia, KS 66801.

CARNIVAL IN LIGHTS-A full color book on Carnival Lighting, including Gone With The Wind Lamps, Candle Lamps and shades-price guide included-\$11.95 plus postage, Helen Greguire, 103 Trimer Road, Hilton, NY. 14468.

CARNIVAL GLASS TUMBLERS-Author Richard Owens-order from Don Brown, Wallace-Homestead Book Company, 1912 Grand Ave., Des Moines, IA. 50303.

THE STANDARD ENCYCLOPEDIA OF CARNIVAL GLASS REVISED EDITION NOW AVAILABLE, many new photographs and expanded European carnival section-\$24.95 (with new price guide), NEW PRICE GUIDE includes eight color columns, size 8x11 - \$4.95, IMPERIAL CARNIVAL GLASS-THE EARLY YEARS-\$9.95, FENTON CARNIVAL GLASS-THE EARLY YEARS-\$9.95, MILLERSBURG THE QUEEN OF CARNIVAL GLASS-\$8.95, NORTHWOOD, KING OF CARNIVAL GLASS-\$9.95, Bill Edwards Author, Collectors Books, Paducah, KY.

CARNIVAL GLASS--by Ray Notley, Shires Album # 104. ISBN 0 85263 637. Price is only \$3.55 including postage. Send to 7 Hills Books, 519 W. 3rd. Street, Cincinnati, OH. 45202.

CARNIVAL GLASS WORLDWIDE--by M. Quinton-Baxandale. 200 Colour Photographs * Pattern Name Index * Exclusive Research * Clubs Worldwide Listed * Order from: CARNIVALIA PUBLICATIONS, PO Box 1, LOSTWITHIEL, CORNWALL, L22 0YZ, ENGLAND US \$13.50 (surface mail) US \$15.00 (airmail) Payment with order please, by International Cheque or Money Order.

FENTON GLASS-THE FIRST 25 YEARS-144 pages, 72 in full color, more than 400 items pictured in Fenton's carnival and iridescent "stretch" colors, rare catalogue reprints (some in color), a complete history of the factory's early years, from 1907 to 1932, \$15.95 for softcover edition with price guide, \$20.00 for limited edition hardbounds. Order from the author, William Heacock, P.O. Box 27037, Columbus, OH. 43227.

Angela Hallam's 52 page fully illustrated paperback-first book to tell about the English-made Carnival-\$3.35 surface postage, air mailed \$4.35 Order from Wise Books, 82 Chart Lane, Reigate, England, RH2 7EA.

CARNIVAL GLASS AUCTION PRICE REPORT-1984 Edition. This years edition will have approximately 4000 entries from major auctions in 1983. Single copy price is still \$8.00 US postpaid (for overseas delivery, add \$1.00). Order from: Al & Wendy Rettke, 14226 E. 143rd Lane, Burnsville, MN 55337

"Encore by Dorothy" books 1 and 2. A series of books on new reproduced Carnival Glass, giving information on the patterns and colors that are being reproduced. Price for each book is \$7.70 postpaid. Be sure to state which book you want. Dorothy Taylor, Box 11734, Kansas City, MO, 64138.

"CARNIVAL GLASS" educational brochure with color photographs. Available to interested collectors or dealers who wish to better describe to and inform the public about our glass. Free of charge from the American Carnival Glass Association. Contact Ruth Schinestuhl, P.O. Box 694, Absecon, NJ 08201.

** CARNIVAL GLASS FOR SALE ** CARNIVAL GLASS FOR SALE **

B SAILBOATS 6 1/2" PLATE, EXCELLENT IRIDESCENCE 425 A HATTIE 8" BOWL 57
 A HATTIE 10 1/2" CHOP PLATE, EXCELLENT IRIDESCENCE, HAS FLAKE ON BACK OF ONE POINT, DOES NOT SHOW ON FRONT -575

NORMA WAGNER, BOX 52, BAGLEY, IA 50026 phone: 515-427-5749

SINGLETON & CHERYL BAILEY, PO BOX 95, LORIS, SC 29569 phone: 803-756-7495
 WILL TRADE ANY OF THESE FOR TROUT & FLY OR BIG FISH PIECES

A MLSB8 PEACOCK & URN 10.5" BOWL W. BEE 150 A MLSB8 PEACOCK & URN MYSTERY RUFFLED BOWL 225
 A MLSB8 PEACOCK & URN MYSTERY CRIMPED BOWL 175 A MLSB8 PEACOCK & URN COURTHOUSE SIZED "SHOTGUN" BOWL 295
 G MLSB8 PEACOCK & URN COURTHOUSE SIZED "SHOTGUN" BOWL 295 G MLSB8 PEACOCK & URN MYSTERY BOWL 175
 S MLSB8 PEACOCK & URN W/BEE 10.5" BOWL 150 A RAYS & RIBBONS BOWL 75
 MMB SCALES BOWL 100 -B SAILBOATS WINE 225

JOHN E. BRITT, 3048 TAMARAK DRIVE, MANHATTAN, KS 66502 phone: 913-539-1933

DP FOUR-SEVENTY-FOUR PUNCH CUP 47.50 W ACORN BURRS PUNCH CUP 40
 VAS FENTONS NUT CUP 35 M STAR & FILE SHERBERT 30
 M RANGER TUMBLER, C in M MARK 95 G GRAPE & CABLE SUGAR BOWL LID 45
 -M STAR & FILE WINE 35 M BUTTON & OPTIC GOBLET, OLD IMPERIAL MARK 75
 -M BUTTON & OPTIC WINE, OLD IMPERIAL MARK 45 DP IMPERIAL GRAPE GOBLET 75

LLOYD WARD, PO BOX 787, EULESS, TX 76039 phone: 817-540-0081

M GRAPE & CABLE MID-SIZED PUNCH SET, 8 PIECES 595 M WREATH OF ROSES PUNCH BOWL & BASE W. PERS. MED. INT 265
 P BUSHEL BASKET, 8 SIDED, M 145 P RAPBERRY WATER PITCHER, M 240
 M PEACOCK & FOUNTAIN BUTTER DISH WITH GOLD DECOR 585 M PERSIAN GARDEN 11" MASTER ICE CREAM BOWL 275
 M GRAPE DELIGHT 6 FTD ROSEBOWL, USUAL FOOT FLAKES 90 G SINGING BIRDS SMALL BERRY BOWL, M 35
 -G MLSB8 DIAMOND TUMBLERS, PRICE FOR ALL 4 IS 220

EDWARD L. HENDERSON, 1111 N. COLLEGE, STUTTGART, AR 72160 phone: 501-673-8757 AFTER 6PM

M DRAGON & LOTUS 8" BOWL 35 M GRAPE & CABLE 6" BOWL 30
 C CARNIVAL HOLLY 8" BOWL, SM CHIP ON TOP 20 M IMPERIAL GRAPE 6.5" BOWL 15
 M PEACOCK & GRAPE 7.5" BOWL, BASE CHIP 30 C PERSIAN MEDALLION 8.5" BOWL, 4 CRACKS 15
 LM RIBBED BOWL 35 M ROCCOCO 5" BOWL, BASE CHIPS, HAVE 2, EACH 10
 M ROCCOCO 5" BOWL, HAVE 2, EACH 12.50 A STIPPLED RAYS 9.5" BOWL, M, SM BASE CHIP 30

DOLORES T. VERSPRILLE, 200 LAKE AVE., ROCHESTER, NY 14617 phone: 716-544-4688

P GRAPE & CABLE FTD FRUIT BOWL, BEAUTIFUL 195 M MLSB8 BLACKBERRY WREATH 10" ICE CREAM BOWL 110
 B PEACOCK TAIL VARIANT COMPOTE, MLSB8 75 M ORANGE TREE FOOTED FRUIT BOWL, CHOICE 80
 P IMPERIAL GRAPE WATER PITCHER, FANTASTIC COLOR 190 M PANTHER SMALL ROUND FOOTED BOWL 35
 M GRAPEVINE LATTICE SMALL PLATE, VERY NICE 50 M GRAPE & BATHIC ARCHES 7 PC WATER SET, A BEAUTY 375
 A FLORAL & GRAPE 6 PC WATER SET, A BEAUTY 350 M ENGRAVED GRAPE BARREL SHAPED TUMBLERS, HAVE 5, EACH 23

DICK HATSCHER, BOX 261 - WALNUT HILL ROAD, BETHEL, CT 06801 phone: 203-743-1468

M GOOD LUCK PLATE 145 M ORANGE TREE LOVING CUP 125
 M WREATH OF ROSES W. VINTAGE INT. PUNCH BOWL TOP 400 P MANY FRUITS PUNCH BOWL TOP 225
 P GRAPE & CABLE CENTERPIECE BOWL 250 G ZIPPERED HEART GIANT ROSEBOWL, POOR IRID BUT RARE 450
 B CHERRY BLOSSOM 6 PC WATER SET 195 P0 FISHNET EPERGNE, SCALLOPED 165
 PEARL GRAPE & CABLE FERNERY, VERY RARE 695 IB EMBROIDERED MUMS BOWL 495

MARTY SCHODTLER, BOX 188 - RD #3, SEWELL, NJ 08080 phone: 609-589-4325 AFTER 6PM EST

P CHATELANE TUMBLER 250 P0 FAN SUCE BOAT 90
 G TROUT & FLY RUFFLED BOWL, SM EDGE CHIP 195 A SPRINGTIME SPOONER 95
 M GRAPE & CABLE HATPIN HOLDER 165 M STAG & HOLLY 11" FTD BOWL 95
 G MLSB8 PEACOCK & URN 9" RUFFLED MYSTERY BOWL 195 W PEACOCK & FOUNTAIN PUNCH CUP 50
 M ROBIN WATER PITCHER 125 AMB MLSB8 LEAF SWIRL COMPOTE 45

PAT CALL, 34 LOVELL ROAD, STRATHAM, NH 03885 phone: 603-778-0660

M PEACOCKS PLATE, EXCELLENT 300 M GRAPE & CABLE PERFUME, COMPLETE 325
 A GRAPE & CABLE MASTER PUNCH SET, 11 PIECES, MINT! 1350 A GRAPE & CABLE POWDER JAR, ALMOST LAV 85
 B M'S FLUTE MASTER SALT 45 A SEAWED 10" BOWL, EXC. IRID. 195
 A LITTLE STARS BOWL 95 AQUA STAG & HOLLY 10" BOWL, SM FLAKE UNDER 1 FOOT 300
 IB GRAPE & CABLE STOPPER FOR COLOGNE 75 W GRAPE & CABLE STOPPER FOR COLOGNE 60

TED SHEIDLEY, 304A HILLCREST DRIVE, NEW CUMBERLAND, PA 17070 phone: 717-938-6417

M WREATH OF ROSES PUNCH BOWL & BASE 135 CLAM ORANGE TREE 9" PLATE 120
 M SODA GOLD 7 PC WATER SET 230 M ROBIN MUG 35
 M HOBNAIL ROSEBOWL 170 B ORANGE TREE SHAVING MUG 40
 M IRIS COMPOTE 40 G GRAPE & CABLE BREAKFAST SUGAR 50
 M VINTAGE COMPOTE 40 M LITTLE FISHES 5.5" BOWL 45

DICK WETHERBEE, 847 STAFFORD ST., ROCHESTER, MA 01542 phone: 617-892-4420

6	APRIL SHOWERS/PEACOCK TAIL 11" VASE	28	P	STAR OF DAVID & BOWS 7.5" DOME FTD BOWL, N	48
8	BLACKBERRY SPRAY 5.5" HAT W. SQUARE TOP	22	G	N'S BEADS 7.5" BOWL	35
M	OPEN EDGE BASKETWEAVE 5" ROUND DISH, FENTON	25	AMB	RIPPLE 9" FLARED TOP VASE, A BEAUTY	35
G	WISHBONE 8.5" 3-FTD BOWL, N, BRILLIANT COLOR	85	M	STAR & FILE 6" FLAT PLATE	25
IB	PLAIN PASTEL 10.5" BUD VASES, A PAIR	37	P	GRAPE & CABLE POWDER JAR, PERFECT CONDITION	110

ALAINA M. PENNETTI, 23 NANCY LANE, FT. MEYERS BEACH, FL 33931 phone: 813-463-3918

DM	OCTAGON PITCHER & 6 TUMBLERS	235	M	WATERLILY & CATTAILS TUMBLER	55
M	GRAPEVINE LATTICE TUMBLER	40	M	BUTTERFLY & BERRY TUMBLER	35
A	MILD STRAWBERRY 10" BOWL, N	125	G	WILD STRAWBERRY 6" BOWL	55
6	TEN MUMS 10" BOWL	80	M	WINE & ROSES WINES, HAVE 2, EACH	35
M	LATTICE & DAISY TUMBLERS, FOR ALL 4	100	B	ORANGE TREE CREAMER	55

STERLING BUTZ, 221 N. ADAMS STREET, ALLENTOWN, PA 18104

M	GRAPE & CABLE SMALL SIZE FRUIT BOWL	115	IB	PEACOCK & FOUNTAIN MASTER BERRY BOWL	425
B	PEACOCK & URN PLATE, FENTON	190	AD	PEACOCKS ON FENCE RUFFLED BOWL	475
IB	NIPPON BOWL, N	125	M	APPLE TREE PITCHER	135
M	GRAPE & CABLE FRUIT BOWL, POINTS STRAIGHT UP, N	600	IG	BUSHEL BASKET, N	130
P	NAUTILUS, BOTH ENDS IN, UNSIGNED	350	P	GRAPE ARBOR 7 PC WATER SET, 2 TUMBLERS 9M CHIP	675

DARLENE YOHE, PO BOX 343, STUTTGART, AR 72160 phone: 501-673-3437

IB	PEACOCK & FOUNTAIN BUTTER, BURST BUBBLE ON BASE	275	IB	PEACOCK & TUMBLERS, HAVE 4, EACH	165
IB	RASPBERRY TUMBLER	175	M	GRAPE ARBOR TUMBLER	100
G	DANDELION MUG, 2.25" HEAT CHECK ON BASE RIM	250	M	BO PEEP MUG	100
P	FLUTE TUMBLER	65	IB	GRAPE ARBOR TUMBLER	100
M	ORANGE TREE GOBLET	25	M	GARLAND ROSEBOWL	45

RAY HITCHCOCK, RRI - BOX 301, WINTERSSET, IA 50273 phone: 515-462-2074

IB	HEARTS & FLOWERS BOWL, SUPER COLOR	230	IB	CONCAVE DIAMONDS TUMBLE-UP, A BEAUTY & RARE	325
PO	FISHNET LILY	55	A	VINTAGE LILY, SMALL	50
RED	OPEN EDGE BASKET, SUPER COLOR BUT CRACK IN BOTTOM	40	M	TOWN PUMP, SHELF PIECE	120
M	DANDELION TUMBLER, N, SUPER	40	G	BUTTERFLY & FERN TUMBLER	50
M	WATERLILY BON-BON, DARK COLOR	30	M	LONG THUMBPRINT CREAMER	32

BERNIE MAHN, 1001 ROCK ROAD, DESOTO, MO 63020 phone: 314-886-6226

M	OCTAGON CREAMER	35	M	ORANGE TREE CREAMER	35
A	VINTAGE 6" PLATE	65	M	PERSIAN MEDALLION 6" PLATE	35
M	MLSSB CHERRY 10" ICE CREAM BOWL	110	B	CHERRY CHAIN 6" PLATE	135
A	GRAPE & CABLE 9" PLATE, N	70	G	POINSETTIA MILK PITCHER	250
A	BLACKBERRY SPRAY COMPOTE	45	M	LEAF CHAIN 7" BOWL	35

PATRICIA CRAVER, PO BOX 8015, ALLANDALE, FL 32019 phone: 904-427-9380

M	MANY FRUITS PUNCH CUP	45	M	MANY FRUITS PUNCH CUP, BASE CHIP	10
M	OCTAGON GOBLET, HAVE 10, EACH	20	MHB	SMOOTH PANELS VASE, IRON CROSS MARK	125
M	SAILBOATS WINES, HAVE 4, EACH	15	M	ORANGE TREE WINE	22
B	ORANGE TREE WINE, SILVERY	32	G	WINDMILL TUMBLERS, HAVE 3, EACH	25
B	BUTTERFLY & BERRY VASE	30	M	GRAPE & CABLE HATSHAPE	35

MORENE CAMPBELL, BOX 107, OCTATE, NM 87734 phone: 505-666-2237

M	RAYS & RIBBONS BOWL	45	M	SUNFLOWERS & DIAMONDS VASE, SCARCE	75
M	PINE CONE 6" PLATE	55	M	LUSTRE ROSE TABLE SET	160
A	WREATH OF ROSES COMPOTE	48	A	HOLLY WHIRL BOWL	60
P	HATTIE BOWL	85	B	HEAVY GRAPE 8" PLATE	65
B	DRAGON & STRAWBERRY COLLAR BASED BOWL, SCARCE	400	IB	FENTONS LITTLE FLOWERS ROSEBOWL, TIPS FEET SMOOTHED 775	775

LINDA LEDBETTER, BOX 232, WAVERLY, MN 55390 phone: 612-658-4864

M	GRAPE ARBOR FTD FRUIT BOWL	135	M	PONY BOWL	45
M	STAR MEDALLION LINK PITCHER	35	M	SODA BOLD TUMBLER	17.50
A	BUTTERFLY & FERN TUMBLER, HAVE 2, EACH	30	DM	FIELD FLOWER TUMBLER	17.50
B	WINDMILL MILK PITCHER, BASE CHIP	30	B	GOOD LUCK BOWL, FLAKE	37.50

GARTH IRBY, 4136 FILMORE, ST. LOUIS, MO 63116 phone: 314-752-0160 AFTER 6PM

P	VICTORIAN BOWL	125	G	VINTAGE 7" PLATE	125
M	LION BOWL	115	M	DAISY & PLUME COMPOTE	35
A	DAISY & PLUME COMPOTE	40	PM	SUNFLOWER BOWL	50
P	GRAPE & CABLE 6" HANDBRIP PLATE	95	SM	LUSTRE ROSE FERNERY	65

DENNIS KECK, 126 CHERRY, PUNXSUTANNEY, PA 15767 phone: 814-938-7426

PO	DRAGON & LOTUS COLLARBASED RUFFLED 9" BOWL	395	A	MLS86 PEACOCK & URN 10" ICE CREAM BOWL	245
M	MLS86 PEACOCK & URN 9.5" DEEP BERRY BOWL	95	M	ORANGE TREE 9" PLATE	115
G	INVERTED FEATHER CRACKER JAR	165	P	BROCADED DAFFODILS 2-HANDED, 2 SIDE UP	30
B	PEACOCK & GRAPE 9" COLLAR BASED BOWL, SUPER	55	A	GRAPE & CABLE 9" PIECRUST EDGE BOWL	45
G	BUTTERFLY & BERRY MASTER BERRY BOWL, RARE COLOR	135	M	FISHSCALE & BEADS 7.5" PLATE	35

JACKIE TYLER, BOX 647, BALDWIN, WI 54002

G	MLS86 PRIMROSE BOWL	95	M	PONY BOWL	85
P	IMPERIAL GRAPE BOWL, SUPER COLOR	55	M	DRAGON & LOTUS	30
A	QUESTION MARKS COMPOTE, TWISTED HANDLE	25	P	STIPPLED RAYS LARGE BOWL, M, SUPER	55
AO	THIN RIB VASE, SM CHIP ON 1 FOOT	48	G	IMPERIAL GRAPE WINE DECANTER, MELIOS, NO STOPPER	45
M	WATERLILY & CATTAILS TUMBLER, RICH COLOR	18	M	LATTICE & GRAPE 7 PC WATER SET	165

J. VOKRAL, 439 GRANDE COTE, ST. EUSTACHE, PQ J7P 1H9 CANADA

M	ORANGE TREE FOOTED WATER PITCHER	350	M	ACORN BOWL	25
M	ACORN BURRS 6PC BERRY SET	200	M	CORINIBLE BSUSUS BOWL	38
M	DRAGON & LOTUS BOWL	28	M	APPLE TREE TUMBLERS, EACH	30
M	BUTTERFLY & TULIP SQUARE FOOTED BOWL	250	B	CHERRY, FENTON, LARGE FOOTED COMPOTE	650
AO	DANDELION MUG	450	M	GRAPE ARBOR FOOTED BOWL	95

ERNEST & LYDIA CAUDLE, RT 1 - BOX 87, STATE ROAD, NC 28676 phone: 919-874-2519

P	DANDELION PITCHER, M	495	AO	PEACOCK ON FENCE BOWL, MORE PASTEL	650
A	VINTAGE 7.5" PLATE	125	P	ACORN BURRS 7 PC WATER SET	695
RED	HOLLY HAT, NICE	245	B	STAB & HOLLY LARGE BOWL	199
PO	SKI STAR LARGE BOWL	95	M	LITTLE FISHES LARGE FOOTED BOWL	120
B	STAB & HOLLY SPATULA FOOTED 7.5" BOWL	115	M	STAB & HOLLY LARGE BALL FOOTED 11" BOWL	125

MARY HERREN, 520 SOUTH BERRY, MORGANFIELD, KY 42437 phone: 502-389-3121

HA	IMPERIAL GRAPE WATER BOTTLE, RARE & A BEAUTY	135	G	MLS86 PRIMROSE 9.75" BOWL, RADIUM, TINY RIM FLECK	75
A	IMPERIAL PANSY 9" FLUTED BOWL, SUPER COLOR	38	A	GRAPE & CABLE PITCHER, SM CHIP ON THUMBPRINT	125
C	ENAMELED TUMBLERS WITH BLUE FLOWERS & GREEN LEAVES 4/40	4/40	A	VINTAGE 7.25" FLUTED BOWL, NICE	18
G	SHELL & JEWEL COVERED SUGAR & CREAMER, SM LINE, EXC 65	65	A	VINTAGE PUNCH CUP	10

AL RETTKE, 14226 EAST 143RD LANE, BURNSVILLE, MN 55337 phone: 612-432-7489 AFTER 5PM CST

AO	THREE FRUITS COLLAR BASED 9" BOWL, REAL NICE	465	IB	DANDELION TUMBLER	135
M	PEACOCK & URN MASTER ICE CREAM BOWL	365	HRND	SINGING BIRDS MUG (HOREHOUND)	265
B	SINGING BIRDS STIPPLED MUG, VERY RARE	425	M	SINGING BIRDS MUG, CALL	510
DM	SINGING BIRDS STIPPLED MUG, VERY DARK & SUPER	130	A	BLOSSOMTIME COMPOTE	85
IB	PEACOCK & URN SMALL ICE CREAM BOWL, HAVE 4, EACH	135	P	PEACOCK & FOUNTAIN SPOONER, FLAKES ON BASE	31

BURNEY TALLEY, 1814 SLATE NW, ALBUQUERQUE, NM 87104 phone: 505-242-1261

M	DAISY & DRAPE VASE	140	M	NESTING SWAN BOWL	185
P	STORK & RUSHES MUG	85	M	ORANGE TREE PUNCH BOWL & BASE	125
A	DOLPHINS FTD BOWL, SCROLL EMBOSSED INTERIOR	185	M	FLUTE & CANE MILK PITCHER, RARE	125
RED	DRAGON & LOTUS ICE CREAM SHAPED BOWL	625	LM	HEAVY IRIS TUMBLER	50

LEE BRYANT, RR #1 - BOX 109, DECATUR, IN 46733 phone: 219-639-3415

P	ACANTHUS BOWL	55	M	NESTING SWAN BOWL, SATIN	165
M	GOLDEN HARVEST DECANTER & STOPPER	75	M	DUTCH PLATE	15
M	BUSHEL BASKET, ROUND	80		SEND BASE FOR LIST OF CARNIVAL FOR SALE	

DELOURIS CRAFT, 702 BRADLEY DRIVE, BLOOMINGTON, IL 61701 phone: 309-662-3610

M	LIONS PLATE, RARE AND GRRREAT!	485	A	PEACOCK & URN 8.75" BOWL, SATINY, FENTON	135
AQA	FENTON OPEN EDGE BASKETWEAVE, 2 SIDES UP, SATINY	80		CELESTE BLUE FENTONS OPEN EDGE BASKETWEAVE 7" ROUND BOWL	350

CAROL CLAYTON, 802 EAST MAIN STREET, ASHLAND, OH 44805 phone: 419-322-1041 DAYS OR 419-289-3430 NITES

B	ILLUSTRON BOM-BON	50	M	PERSIAN MEDALLION 6.25" PLATE	32
M	SCROLL EMBOSSED 5.5" BOWL, FILE EXT.	24	A	PEACOCK & FOUNTAIN TUMBLER	60
M	PEACOCK & URN 8" BOWL, FENTON	125	A	MLS86 CHERRY 10" ICE CREAM SHAPED BOWL	175
A	STAR SPRAY 6" BOWL	85			

HAPPY HOLIDAYS TO YOU & YOURS

** CARNIVAL GLASS WANTED ** CARNIVAL GLASS WANTED ** CARNIVAL GLASS WANTED **

JOHN MUEHLBAUER, 7051 LA COSTA LANE, CITRUS HEIGHTS, CA 95621 phone: 916-723-2852 HOME, 916-355-2455 WORK
M GRAPE & CABLE MASTER PUNCH BOWL BASE ONLY, ANY CONDITION W,B EMBROIDERED MUMS BOWLS, PLATES
6,16 ACORN BURRS PUNCH SETS AD HEARTS & FLOWERS BOWLS, PLATES
M SUNKEN HOLLYHOCK GNTW TOP ONLY

AUDREY MAGAN, 2533 FARRIER PLACE, OWENSBORO, KY 42301 phone: 502-683-4508
I WILL PURCHASE BROKEN, CRACKED, CHIPPED CARNIVAL. STATE YOUR PRICE OR I'LL MAKE AN OFFER.

BARBARA NELSON, RFD 4 - BOX 155, LACONIA, NH 03246 phone: 603-293-7246
18, CELESTE BLUE FENTON'S 2 ROW OPENEDGE BASKETS, ANY SHAPE, WITH OR WITHOUT BLACKBERRY INTERIOR
P CONSTELLATION COMPOTE M,B HEARTS & FLOWERS BOWLS, LIGHT OR DARK

LLOYD WARD, PO BOX 787, EULESS, TX 76039 phone: 817-540-0081
CB FENTONIA COVERED BUTTER W MANY FRUITS PUNCH BOWL BASE AND/OR CUPS
CB GRAPE & CABLE MASTER PUNCH BOWL TOP CB ACORN BURRS PUNCH BOWL & BASE WITH OR WITHOUT CUPS
ANY WISHBONE EPERGNES OR PARTS *ANY* WIDE PANEL EPERGNES OR PARTS
CB WREATH OF ROSES PUNCH BOWL BASE P CIRCLED SCROLL SMALL BERRY BOWLS
18, 16, W, AD PEACOCK ON FENCE BOWLS OR PLATES *ANY* ODD PARTS OR PIECES TO SETS

ERNEST & LYDIA CAUDLE, RT 1 - BOX 87, STATE ROAD, NC 28676 phone: 919-874-2519
B PEACH TUMBLERS, N P DANDELION TUMBLERS, N
M ORIENTAL POPPY TUMBLERS W GRAPE ARBOR PITCHER, MINT
W PEACOCK ON FENCE PLATE, REAL NICE ONE

CHARLES PROPRT, 1005 PARK LANE, OSCEOLA, IA 50213 phone: 515-342-2897
P RASPBERRY WATER SET P FIELDFLOWER TUMBLER

PATRICIA CRAVER, PO BOX 8015, ALLANDALE, FL 32019 phone: 904-427-9380
P MEMPHIS PUNCH TOP ONLY P GRAPE & CABLE SWEETHEAT BOTTOM
B VINTAGE LILY B GRAPE & GOTHIC ARCHES BUTTER TOP
M GRAPE & GOTHIC ARCHES BUTTER TOP M BUTTERFLY & BERRY BUTTER TOP
M WREATHED CHERRY BUTTER TOP M BUTTERFLY & BERRY SUGAR TOP
B BUTTERFLY & BERRY SUGAR BOTTOM M PEACOCK @ FOUNTAIN BUTTER BOTTOM

JACKIE TYLER, BOX 647, BALDWIN, WI 54002
PO WREATHED CHERRY MASTER & 4 SMALL BERRY BOWLS B PERSIAN MEDALLION ROSEBOWL

DENNIS KECK, 126 CHERRY STREET, PUNKSUTAHNEY, PA 15767 phone: 814-938-7426
DM PEACOCK @ FOUNTAIN CREAMER 18 M'S PEACOCKS BOWL
6 BUTTERFLY & BERRY SUGAR M GRAPE & CABLE PERFUME STOPPER
6 WISHBONE EPERGNE BASE 18 HEARTS & FLOWERS COMPOTE OR PLATE

MH. CROWL, 2835 HOLLYWOOD BLVD., HOLLYWOOD, FL 33020 phone: 305-921-6009
PO FRUIT SALAD PUNCH BOWL BASE RED REGAL IRIS GNTW TOP

JESSIE V. PRELLWITZ, 3204 18TH AVENUE SOUTH, GREAT FALLS, MT 59405
GREEN WREATH OF ROSES PUNCH CUPS WITH VINTAGE INTERIOR PATTERN

AL RETTKE, 14226 EAST 143RD LANE, BURNSVILLE, MN 55337 phone: 612-432-7489 AFTER 5PM CST
M PEACOCK @ FOUNTAIN PUNCH CUPS P PEACOCK @ FOUNTAIN PUNCH TOP
18 GRAPE & CABLE POWDER JAR LTD 16 GRAPE & CABLE BOWLS/PLATES

APPLICATION FOR MEMBERSHIP

=====

THE HEART OF AMERICA CARNIVAL GLASS ASSOCIATION, INC.

=====

DATE _____

NAME _____

SPOUSE _____

ADDRESS _____

CITY _____ STATE _____

ZIP CODE _____ TELEPHONE _____

RECOMMENDED BY _____

Do you want your name in the directory? YES _____ NO _____

DUES ARE \$20.00 U.S. PER YEAR (JUNE to MAY with back-issues on request)

SEND DUES TO: H.O.A.C.G.A.
LUCILE BRITT, SECRETARY
3048 TAMARAK DRIVE
MANHATTAN, KS 66502

A FEW OF THE BENEFITS OUR CLUB OFFERS:

The ONLY MONTHLY PUBLICATION on just Carnival Glass Collecting, keeping you informed of new discoveries and all of the current events. Members only may advertise, FREE OF CHARGE!!!

An exclusive PATTERN NOTEBOOK with yearly special inserts (ALL inserts are still available)

ANNUAL SOUVENIR AND CONVENTION WITH SOME OF THE GREATEST PEOPLE YOU CAN HOPE TO MEET!!

<<<< JOIN TODAY >>>>