

H.O.A.C.G.A.
BULLETIN SECRETARY
AL RETTKE
14226 East 143rd Lane
Burnsville, MN 55337

FIRST CLASS MAIL

INSIDE THIS ISSUE

CONVENTION SCHEDULE.....	3
GARDEN MUMS by Don Moore.....	5-6
PICTORIAL PATTERN PARADE.....	7
TUMBLER SERIES.....	9
CARNIVAL CALENDAR.....	10
SOUVENIR REPORT.....	12
CARNIVAL ALERT.....	12
CARNIVAL LIBRARY.....	13-14
GLASS FOR SALE.....	15-20
GLASS WANTED.....	21-22
SOUVENIR ORDER FORM.....	outside rear cover

APRIL 15, 1985



**Heart of America
Carnival Glass
Association Inc.**

Membership June to May
\$20.00 per couple or single

Published the 15th
of each month

PRESIDENT

Cooley Miller
7605 N.W. Eastside Drive
Kansas City, MO 64152
816-741-4635

VICE-PRESIDENT

Diane Treff
13646 Leavenworth Road
Kansas City, KS 66109
913-721-2917

TREASURER

Karen Engel
35292 Oak View Drive
Brownsville, OR 97327
503-466-5989

SECRETARY

Lucile Britt
3048 Tamarak Drive
Manhattan, KS 66502
913-539-1933

BULLETIN SECRETARY

Al Rettke
14226 East 143rd Lane
Burnsville, MN 55337
612-432-7489

All monetary figures quoted are in U.S. dollars.
Please make checks for dues payable to H.O.A.C.G.A.
and send them to the secretary as listed above.

HOACGA MONTHLY MEETING -- MARCH 1985

At 2PM, March 24, 1985, Vice-President Diana Treff called the monthly meeting to order. The minutes were read and accepted as read. There was no treasurers report.

Vice-President Treff requested a report from Convention Chairman George McGrew. George reported on the last minute details of the convention and stated that everything is on course and expects to have one of the best conventions ever.

John Britt, Souvenir Chairman, reported on souvenir sales and displayed some of the whimsy samples. All members attending the meeting were pleased with the whimsy display. There are 35 whimsys. John also gave a brief report on the trip to the Fenton factory. President Miller and his wife Marge also made the trip for the souvenir production.

Diana Treff reported that the traditional room display trophies are no longer available. She recommended that the club use the few left over trophies in it's inventory for first through fifth places along with the monetary awards. She also suggested that the club use some of the table favor mugs left in it's inventory for the other room display awards.

Anna Belle Vaughn made a motion to use the table favor mugs for awards rather than trophies and that until the balance of remaining trophies in the clubs inventory is depleted, they be used for 1st through 5th place along with the monetary award. The motion was seconded by Sadie Treff. The motion passed.

Marge Miller, door prize chairperson, gave an updated report on the progress of the program. She stated that she had gotten approval from the Board to put some small flower arrangements in each members room as an extra show of appreciation and welcoming gesture to those members attending the convention. She also reported on and gave a brief list of the items she has received for the door prize program. Both members and area business' have been very responsive to the program.

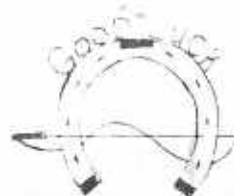
Herbert Treff, Nominating Chairman, reported on the slate of possibilities for 1985-6 Board Members.

Viola Shikles moved that we adjourn, Sadie Treff seconded, the motion passed. The next meeting will be April 26, at the KCI Holiday Inn, Kansas City, MO. This will be the annual meeting of the HOACGA.

Following the meeting, members were able to view the remodeled guest and banquet rooms.

LUCILE BRITT, SECRETARY

COOLEY MILLER, PRESIDENT



Heart of America
Carnival Glass Association, INC.

Dear H.O.A.C.G.A. Member:

We are pleased to announce the following itinerary for the 13th annual convention. The dates will be April 25, 26, 27 and 28th.

THURSDAY, APRIL 25th: Again this year there will be a luncheon with a guest speaker. This years speaker will be Mr. Albert Rodenhouse who will share his knowledge of Carnival tumblers.

FRIDAY, APRIL 26th: The banquet has always been an enjoyable and rewarding event. This year John and Lucile Britt will be our guest speakers. Needless to say this will be a very interesting and informative lecture.

SATURDAY, APRIL 27th: This is the day that most everyone is waiting for. In the morning there will be the auction conducted by Tom Burns. This year the auction will feature glass from the collection of Mr. Louis Bradford of Kentucky. Mr. Bradford has, over the years, purchased many fine examples of Carnival glass.

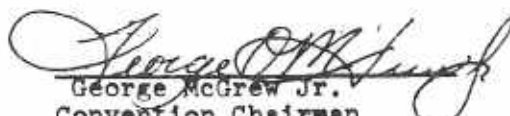
SATURDAY EVENING: How many times have you heard someone mention "The Good Old Days"? Well this year you won't have to rely on your memory. After the buffet dinner, entertainment will be provided by Mr. Dooley Weilert, playing music from the era of the big bands.

We would like to increase the atmosphere by asking those who attend the dance to rummage thru your closets and see if you can find some of those old clothes from the forties and wear them to the dance. I sure hope that I won't be the only one attired in this fashion.

Thruout the convention there will be drawings for prizes donated by various businesses and individuals. So be sure to attend all the functions and watch for Marge Miller who is in charge of these activities.

You may register either Thursday or Friday from 9-11.

Hope to see all of you at this years convention to join in the fun and friendship.


George McGrew Jr.
Convention Chairman
and
Member of the Board of Directors

** NEW PHILADELPHIA AUCTION **

Our winter has been more severe than usual so when Tom Burns announced the date for the New Philadelphia carnival auction we immediately crossed our fingers and hoped no big snow would come on March 8th & 9th. The weather was in our favor but did rain on our way there and it was a dreary Friday. We even saw piles of snow on hillsides where it had drifted so deep.

A large crowd gathered at the motel and it was good to see so many friends again. Most all of them agreed our winter was one to forget. The carnival was beautiful as always. The rare Thistle punch bowl and base was the center of attention as only one other is known. The experimental Rose Columns vase was also a beauty and never seen before except by visitors in the Courtney home. The large peach opal Persian Garden chop plate was an eye catcher also, it sold for \$4750 to Earl Bacon who always buys some special carnival. One can feel certain no pork chops can will ever get on that prized possession. Seems to me I heard he had another to match it, too. Now wouldn't that be great? Twins.

The punch set was the highest value item sold, \$6750, I believe it went to NY. The experimental Rose Columns vase went to Texas at \$3000. It will have a good home with its royal relatives in the colors of marigold, green, amethyst and blue. Can you think of anything more spectacular than such a "bevy of beauties"?

There were over 100 bidding numbers, it was a very long sale and many had to leave early for home. We couldn't stay to the end either. The good carnival held its value and as one would expect, the ordinary pieces slipped a bit on occasion. All the carnival found a new home and we hope all its buyers are happy.

We did enjoy the trip and feel it was a good start to the '85 gatherings. Tom gave out several dates of coming events but we won't be going to any very soon. It does promise to be another good year.

GRACE & BYRON RINEHART, Charleston, WV

** NEWS FROM THE AIR CAPITOL CARNIVAL GLASS CLUB **

We had a good day for a meeting on March 10th and a nice turn out with 15 members and 1 guest. Each month we are putting together plans for our convention in October. The committee is putting together their talents so we can have a nice convention.

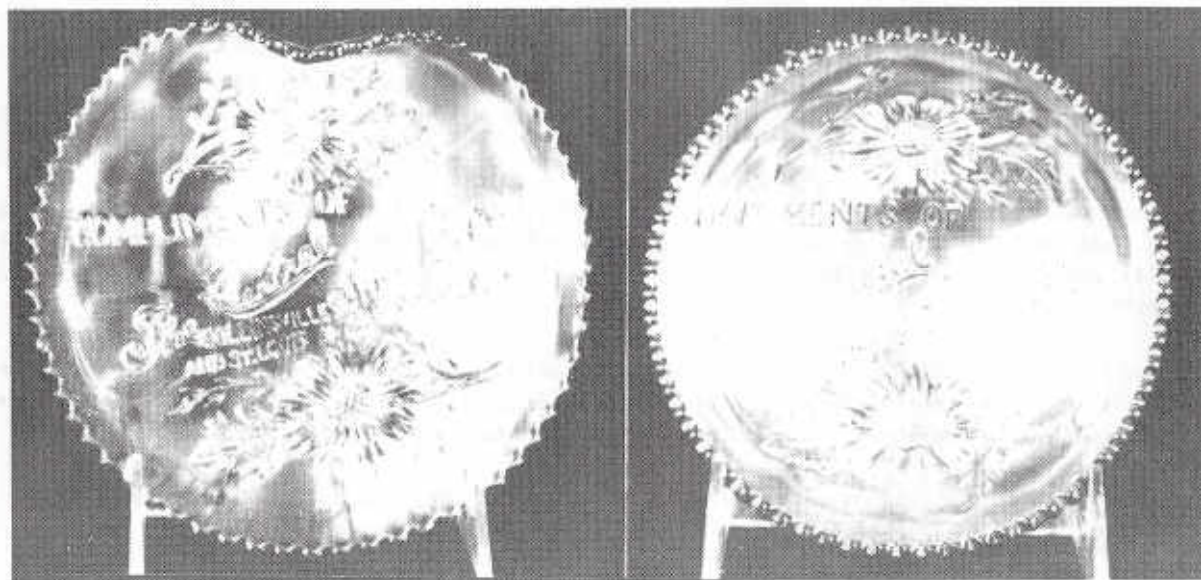
Roland Kuhn gave the educational program for the meeting, he talked about the Millersburg Glass Company. He had several fine pieces to show and talk about. Millersburg seems to be a real nice item to get hold of now and has been for some time. A table full of Millerburg glass makes for some real interesting conversation as well as being very beautiful.

DONALD E. KIME, ACCGC Secretary

Carnival Cameos

BY DONALD MOORE

NORTHWOOD'S GARDEN MUMS ADVERTISING PIECES

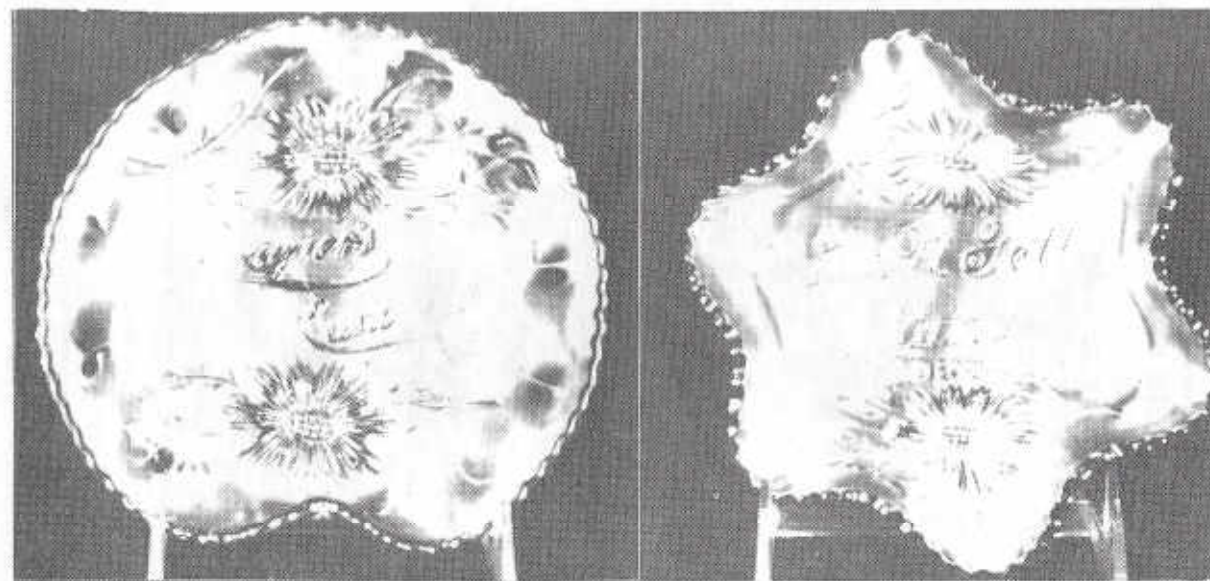


#1 - HANDGRIP PLATE
(Central Shoe Store)

#2 - ICE CREAM SHAPE
(Central Shoe Store)

The tendency is to become so engrossed in advertising pieces that we forget the GARDEN MUMS pattern that Northwood used on so many of the pieces. The shapes shown here are all variations on the standard 6" advertising plate. Now and then this same piece is found in a bowl or plate with just the Garden Mums and no advertising.

Photo #1 shows a typical handgrip plate with the handgrip at the top. Photo #2 shows the same Central Shoe Store piece in the ice cream bowl shape. It is about 2" deep and a bit less than 5" in diameter.



#3 - BOTTOM HANDGRIP
(Brazier's Candies)

#4 - SIX RUFFLE BOWL
(Geo. W. Getts)

Now and then a plate will turn up with the handgrip on the side or at the bottom as shown in Photo #3. Banana boat shapes (turned up on two sides) were also made. The ruffled Geo. W. Getts bowl in Photo #4 advertises a piano store in Grand Forks, N. Dak. The "S" in "Forks" is backward on all of these.

These Garden Mums advertising pieces may or may not carry Basketweave as a reverse pattern. Those that do not have Basketweave use a Wide Panel (12 panels) back with a 30 point star in the base. Those with the Basketweave are signed but the others are not. I have never been able to confirm that these pieces were made in any color other than amethyst.

The price of these pieces will run from \$150-650. The variance in price is largely due to the advertising rather than the shape of the piece. Everything else being equal, I expect the flat and handgrip plates are somewhat more desirable than the bowls.

DON MOORE

PAGE 6

PICTORIAL PATTERN PARADE

by John & Lucile Britt



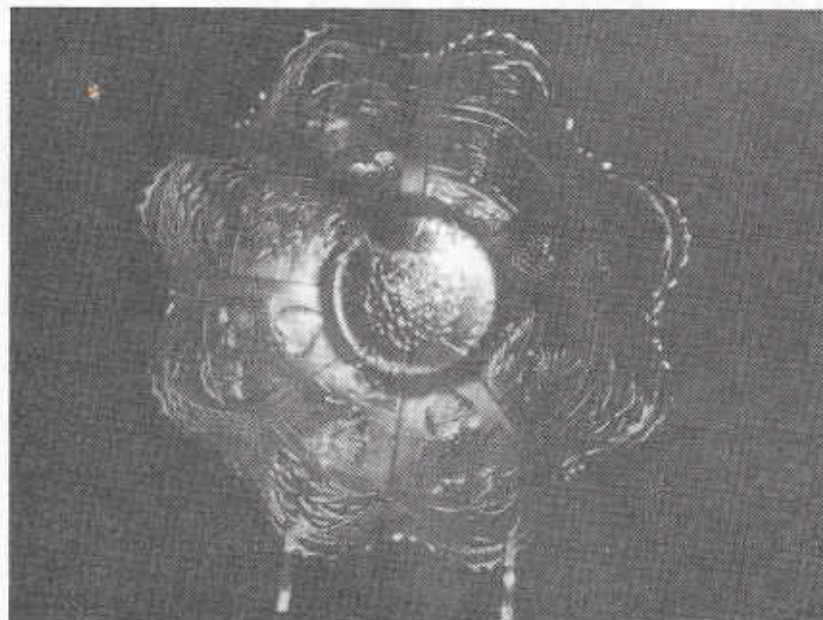
VARIATIONS IN GRAPE & CABLE PUNCH CUPS

Notice the distinct difference between the two "Grape & Cable" punch cups that are shown above. The one on the left has only two leaves and two bunches of grapes. The other cup has five leaves and three bunches of grapes. While the cup on the left has only two bunches of grapes, the bunches are also smaller than those on the other cup. Being a retired fruit and vegetable grower myself, it appears that they had a very poor crop of grapes the year that the mold was made for this cup (Ha). Both cups contain the cable and have the underlined "N" in a circle. They both have the plain (smooth) background. Northwood also made "Grape & Cable" punch cups with the stippled background. These cups contain four leaves, three large bunches of grape and two small bunches. It also contains the cable and trademark. I have seen the plain background cups, shown on the right above, in purple, amethyst, marigold, blue, green, white, lavender, pastel blue, aqua opal and several shades of pastel green. We have the stippled cups in electric blue, teal blue, marigold, pastel marigold, green, purple and aqua. "Grape & Cable" punch cups were made in such quantities by Northwood that even the standard cup shown on the right has a variation. Some of these cups, in this particular version, have the leaves that extend up and out over the cable while on the others the leaves are completely below the cable. This difference very likely occurred when a new mold was made.

Collecting punch cups can certainly be a lot of fun. There are a great many colors, patterns and variations to be found. Cups have an advantage over punch sets as they require much less space to display. It also takes considerably less capital to build a collection of cups rather than punch sets! This does not take anything away from punch sets as they are very beautiful indeed, but not all of us have the resources or space to build a big punch bowl collection.

JOHN & LUCILE BRITT

RARITIES and SELDOM SEEN
by Ivan & Betty Mitchell



>>>> DRAGON & BERRY, a Fenton pattern <<<<

The above bowl is one of the three we have in the colors of marigold, blue and green. This is a beautiful type of bowl and was only produced in these three colors. You seldom see all three bowls ruffled and with the collar base in one collection. Usually one or more will be in the ice cream style, in other words the style of each, not the same.

One wonders why the Dragon & Lotus was made in abundance and the Dragon & Berry is so scarce. There must have been a very small factory run when they made these. Maybe they didn't go over good at that time and they discontinued them soon after.

These bowls are not rare, but they are on the scarce side. The strawberries are very well fashioned and fit perfectly in the space provided for them as well as the dragon. These bowls are approximately 9.5" in diameter. The marigold will sell for around \$325 and the blue or green about \$450. These are much sought.

NOTE YOUR DAMAGE --- PLEASE!!!

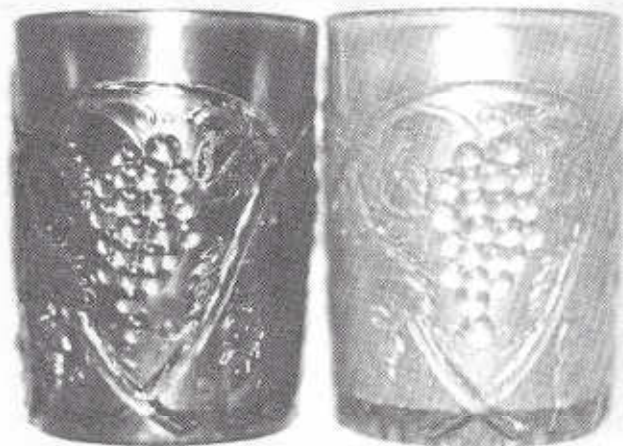
It's that time of year again, carnival glass sales start to pick up and people start to minimize the damage on their for sale items. The editor has received quite a number of complaints on people sending out damaged glass or not advertising it as such. The buyer is the immediate loser, they are out either shipping both ways or long distance charges or both. The seller may not realize it, but they may be the long term loser, the "carnival fraternity" is close knit and open mouthed. The word does get around.

The morale of the story?? ADVERTISE ACCURATELY IF SELLING,
AND DON'T FORGET TO ASK THE RIGHT QUESTIONS IF BUYING.

----PAGE 8----

EDUCATIONAL TUMBLER SERIES

by John & Lucile Britt



PALM BEACH A PATTERN BY U.S. GLASS CO.

In my opinion, "Palm Beach" is one of the most beautiful of the carnival glass tumblers. They were also made in both blue and vaseline opalescent without iridescence. These are also beautiful, very desirable and highly sought after by glass collectors everywhere. The "Palm Beach" carnival glass tumblers were made in a fantastic frosty white and a rich honey amber color. The honey amber is quite different from what is generally known as marigold. While I have seen several purple "Palm Beach" vases, no tumbler has ever been reported in any of the dark colors.

"Palm Beach" tumblers contain a cluster of grapes and leaves that is pressed into the underside of the base. The outer edge of the base bottom has been ground at the factory on all the tumblers I have ever seen. The pattern is well designed, artistic and attractive. While not as rare as tumblers like Morning Glory, Gay Nineties or Fentonia Fruit, they are much harder to find than are such tumblers as Greek Key, Wishbone or Fentonia.

The water pitcher to the "Palm Beach" set is very short and blocky. It stands only 6.5" high. The handle is of an unusual twig like design. The pitcher, like the tumblers, is quite hard to find. While taking nothing away from this nice pitcher, had it been made in the tall tankard type, the "Palm Beach" water set would be rated much higher by collectors today than even the quite high rating that it now enjoys.

In conclusion, "Palm Beach" tumblers are super in every way. They certainly rate high on my list of top carnival glass tumblers. We found them very hard to come by when we were building our tumbler collection. This U.S. Glass pattern is number 87 in this tumbler series. Next month we will cover the very popular "Diamond Lace" pattern.

*** 1985 CARNIVAL CALENDAR ***

APRIL 25-28 - 13th Annual CONVENTION, HEART OF AMERICA CARNIVAL GLASS ASSOC. Luncheon with speaker, Banquet, SUPER AUCTION, Chuckwagon and lots more!! Room Rates only \$40 per day, Holiday Inn-KCI Airport, phone 816-464-2345 FOR DETAILS AND INFORMATION SEE PAGES 2-3-4 OF THE FEBRUARY BULLETIN

JUNE 7-8 - Annual CONVENTION, Lincoln Land Carnival Glass Club Midway Motor Lodge, Elk Grove Village, IL. John Britt, Banquet speaker. Contact Rick Kojis @ 414-327-0321 for more details, he loves to talk anyway.

JUNE 19-22 - 19th Annual CONVENTION, International Carnival Glass Association Holiday Inn, Cedar Rapids, IA. Holiday Inn with large windows for displays. Thursday auction, Friday Banquet with Don Moore as speaker, a full slate of great events. Contact either Don & Barb Chamberlain at 319-935-3925 or Larry Keig at 319-425-4467 for further information.

JULY 11-13 - 20TH Annual CONVENTION, American Carnival Glass Association Midway Motor Lodge, Elkhart, IN. Thursday Auction, Guest speakers will be Marie McGee and Helen James. For details call Mrs. Gerry Hunter 219-353-7276

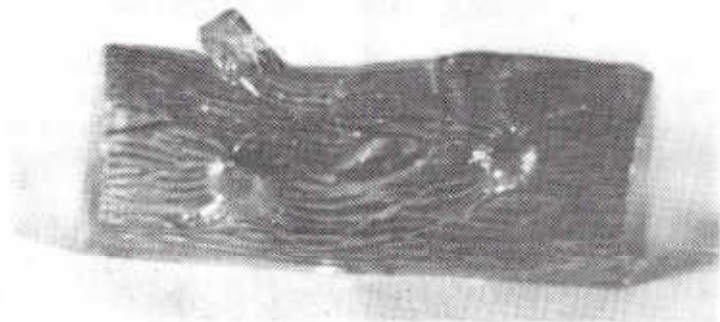
AUGUST 8-10 - 12TH Annual CONVENTION, Pacific NW Carnival Glass Club At the Holiday Inn HolidayDome in Eugene, OR. There will be another famous "Salmon BBQ Picnic" to kick off the convention along with lots of other exciting events. For more info contact Karen Engel, 35292 Oak View Drive, Brownsville, OR 97327 503-466-5989 or work 503-466-5191

SEPTEMBER 6-8 - 3RD Annual CONVENTION, New England Carnival Glass Association. Quality Inn, Chicopee, Mass. Sunday Auction. For more information contact Howard Robinson, convention chairman, 413-536-4319

OCTOBER 11-13 - 2nd Annual CONVENTION, Canadian Carnival Glass Club Bill Heacock, banquet speaker on Saturday, auction Sunday, I.D. clinic & more. Conestoga Inn, Kitchener, Ont., for reservations phone toll free 800-528-1234 For Info Contact: Janet Knechtel, P.O. Box 3023, Kitchener, Ontario N2B 4R5

OCTOBER 18-20 - CONVENTION of The Air Capitol Carnival Glass Club Airport Sheraton Inn, 5500 W. Kellogg, Wichita, KS (I-235 & US 54 West) Contact Don Kime, 1202 West 4th, Haysville, KS 67060

By the time you read this, WENDY RETTKE should be at home recuperating from her surgery.



THE MINIATURE CARNIVAL GLASS LOG -- by Sherman Hand

This log was found by Mrs. Swafford of Warsaw, MD and she gave me the pleasure of photographing it. This piece is just under 3.25 inches long and one inch in diameter with a flat surface on the bottom which runs the length of the log. There is a molded hole in the top about 5/16" in diameter and 5/8" in depth. The bark, the little knots and branch all look and feel realistic. The ends look as though they were chopped with a good sharp axe. The log is light marigold with average iridescence which gives the appearance of late carnival, but I have seen some early carnival glass that has the same characteristics.

I don't know the purpose or the intended use of this small piece. A paperweight is one possibility but not necessarily the only one. For sure, it is an unusual find and a attractive addition to her collection. Perhaps we can dub it the "LINCOLN LOG".

NEWS FROM TAMPA BAY CARNIVAL GLASS CLUB

We celebrated our successful jamboree March 17 at the home of Dorothy and Art Smith. The 23 members attending enjoyed the buffet and the large cake decorated with the slogan "Lose Your Heart To Carnival Glass" with appropriate green icing and shamrocks for St. Patrick's Day.

The business meeting followed the buffet. Shirley Conyers read the Secretary's report, Dorothy Smith gave the Treasurer's report and noted that the club now has 91 members. Art gave a complete report on the recent Jamboree. The members voted to hold the Fifth Annual Jamboree on February 13-15, 1986. Nicholas Vafiadis gave a summary on carnival glass plates.

Art Smith conducted an unusual auction, he selected ten pieces of carnival glass. All members were asked to bid on the glass. Using a 1967 price guide Art had the 1967 prices as well as 1985 suggested prices. The idea was for the member to stop bidding when he or she thought the 1967 price was reached. At the conclusion of the bidding the 1967 price was announced and compared to the 1985 price. Prices have increased since 1967! The next meeting will be April 28 at the home of Maria and Nicholas Vafiadis in Tarpon Springs.

ARTHUR I. SMITH

Editors Note: Art, what are 1985 suggested prices?

SOUVENIR REPORT by John Britt

The 1985 red Souvenir Bells featuring the portrait of Harry Northwood were made on March 18th. Lucile and I, along with Cooley & Marge Miller, were at the Fenton Factory while they were being made. Frank Fenton was also there to supervise and he went all out to see that we got a very fine product.

We liked them so well that we had a few more made over the amount of our orders. So if there is anyone out there that planned on ordering a bell and neglected to do so, we still have a few available. Remember, next year we will feature the portrait of Frank L. Fenton and it will be in a different color, so you won't want to miss out on this first issue of this bell series. The price is just \$35.00 plus \$2.50 for shipping. There is no postage charge if you pick them up at the convention. Make the check payable to H.O.A.C.G.A. and send it to: JOHN BRITT, 3048 TAMARAK DRIVE, MANHATTAN, KS 66502.

>>>>> CARNIVAL ALERT <<<<<

I just had a call from Larry Hilburn, West Plains, MO. He is a relatively new collector and wanted information about an amethyst Imperial Pansy 8 1/2" bowl he had just found with an "W" signature that carries the tail on the "N" to make it into a lopsided "W".

You will recall that this practice was used by the L.G. Wright Co. on a number of the old Northwood molds that were sold by Dugan/Diamond to the Wright Co. many years ago. These pieces were pressed for Wright by the Westmoreland Co. As you know, Westmoreland is now out of business and I have heard that Mosser was now pressing glass for L.G. Wright.

Now how does this tie into the appearance of this IMPERIAL Pansy bowl with this "W" signature? Remember now, Imperial has gone out of business and they have been in the process of selling their molds. I wonder if L.G. Wright purchased this old Pansy mold and is now having Moser make this piece for them?

Of course, the question is why would they add this signature to the old Imperial mold. I don't know the answer for sure, but they must have felt this would increase sales in some way. The good news is the fact that this should backfire and serve as a warning to collectors that pieces so marked are new. If they were unmarked, they could be a real problem.

Larry tells me that this Pansy bowl carries the standard Imperial Arcs as the reverse pattern. He will bring it with him to the HOACGA convention where it can be examined. In the meantime, collectors should have this information. If you have any pieces to this puzzle, please pass them along.

DON MOORE

PAGE 12

OLD CARNIVAL GLASS LIBRARY

CARNIVAL GLASS RARITIES-A color line approach. Lists the top 10 rarities in each color-plus complete rarities price guide-40 pages of black and white pictures-special section on whimsies-\$8.50 pp. Also THE SHAPE OF THINGS IN CARNIVAL GLASS, 110 pages, 200 items in full color-\$9.95. Don Moore, 2101 Shoreline Drive, Apt 462, Alameda, CA. 94501.

CARNIVAL GLASS SERIES-by Marion T. Hartung. Each book has 100 different patterns-10 books in the series, books 1,2 and 3-\$3.00 ea, books 4 thru 10-\$3.50 ea. 1981-82 price guide-\$5.00 pp, Northwood Pattern Glass-clear, colored, custard and carnival-\$9.95, plus .50 postage. Order from Ione Henshaw, 903 East 6th Ave., Emporia, KS 66801.

CARNIVAL IN LIGHTS-A full color book on Carnival Lighting, including Gone With The Wind Lamps, Candle Lamps and shades-price guide included-\$11.95 plus postage, Helen Greguire, 103 Trimer Road, Hilton, NY. 14468.

CARNIVAL GLASS TUMBLERS-Author Richard Owens-order from Don Brown, Wallace-Homestead Book Company, 1912 Grand Ave., Des Moines, IA. 50303.

THE STANDARD ENCYCLOPEDIA OF CARNIVAL GLASS REVISED EDITION NOW AVAILABLE, many new photographs and expanded European carnival section-\$24.95 (with new price guide), NEW PRICE GUIDE includes eight color columns, size 8x11 - \$4.95, IMPERIAL CARNIVAL GLASS-THE EARLY YEARS-\$9.95, FENTON CARNIVAL GLASS-THE EARLY YEARS-\$9.95, MILLERSBURG THE QUEEN OF CARNIVAL GLASS-\$8.95, NORTHWOOD, KING OF CARNIVAL GLASS-\$9.95, Bill Edwards Author, Collectors Books, Paducah, KY.

CARNIVAL GLASS--by Ray Notley, Shires Album # 104. ISBN 0 85263 637. Price is only \$3.55 including postage. Send to 7 Hills Books, 519 W. 3rd. Street, Cincinnati, OH. 45202.

CARNIVAL GLASS WORLDWIDE--by M. Quinton-Baxandale. 200 Colour Photographs * Pattern Name Index * Exclusive Research * Clubs Worldwide Listed * Order from: CARNIVALIA PUBLICATIONS, PO Box 1, LOSTWITHIEL, CORNWALL, L22 0YZ, ENGLAND US \$13.50 (surface mail) US \$15.00 (airmail) Payment with order please, by International Cheque or Money Order.

FENTON GLASS-THE FIRST 25 YEARS-144 pages, 72 in full color, more than 400 items pictured in Fenton's carnival and iridescent "stretch" colors, rare catalogue reprints (some in color), a complete history of the factory's early years, from 1907 to 1932, \$15.95 for softcover edition with price guide, \$20.00 for limited edition hardbounds. Order from the author, William Heacock, P.O. Box 27037, Columbus, OH. 43227.

"CARNIVAL GLASS - An Introduction to the Iridescent Pressed Glass Grandma had on her sideboard", Angela Hallam's 52 page fully illustrated paperback is NOW AVAILABLE IN THE U.S. for only \$2.95 ppd. Nancy Johnson, The Library, P.O. Box 37, Des Moines, IA 50301.

CARNIVAL GLASS AUCTION PRICE REPORT-1984 Edition. This edition has approximately 4000 entries from major auctions in 1983. Single copy price is still \$8.00 US postpaid (for overseas delivery, add \$1.00). Order from: Al & Wendy Rettke, 14226 E. 143rd Lane, Burnsville, MN 55337 The 1985 Edition will not be published until summer/fall '85.

HOACGA PATTERN NOTEBOOK, get the complete COLOR reference including the 1985 insert on the first half of rosebowl for only \$18.00 plus \$4.00 postage. 1985 insert only is \$4.00 plus \$1.00 postage. Order them from the Secretary (address is inside front cover). Membership required to order these.

OTHER REFERENCE MATERIAL

"Encore by Dorothy" books 1 and 2. A series of books on new reproduced Carnival Glass, giving information on the patterns and colors that are being reproduced. Price for each book is \$7.70 postpaid. Be sure to state which book you want. Dorothy Taylor, Box 11734, Kansas City, MO, 64138.

"CARNIVAL GLASS" educational brochure with color photographs. Available to interested collectors or dealers who wish to better describe to and inform the public about our glass. Free of charge from the American Carnival Glass Association. Contact Ruth Schinestuhl, P.O. Box 694, Absecon, NJ 08201.

** GLASS FOR SALE ** GLASS FOR SALE ** GLASS FOR SALE ** GLASS FOR SALE ** GLASS FOR SALE ** GLASS FOR SALE **

MRS. JAMES CAPPS, 12168 NORTH WILLOW, CLOVIS, CA 93612 phone: 209-435-7786
 B GRAPE & CABLE CENTERPIECE BOWL, POINTS TURNED UP, SUPER AND VERY RARE 1000
 B ORANGE TREE PUNCH BOWL & BASE, OUTSTANDING 275 B STAG & HOLLY LARGE ICE CREAM SHAPED BOWL, SUPER 175
 B PERSIAN MEDALLION ROSEBOWL, SQUARE OPENING 75 B GRAPE & CABLE STIPPLED PUNCH CUPS, SUPER, EACH 30
 M COSMOS & CANE CREAMER 75 A PEACOCK & FOUNTAIN PUNCH CUPS, HAVE 2, EACH 25
 P MANY FRUITS PUNCH CUP, SUPER 25 P HEAVY GRAPE PUNCH CUP, WAFFLE & GRAPE INT., SUPER 75

BURNEY TALLEY, 1814 SLATE NW, ALBUQUERQUE, NM 87104 phone: 505-242-1261
 M ORANGE TREE PUNCH BOWL, BASE & 4 CUPS 500 M ORANGE TREE PUNCH BOWL & BASE 95
 M RIPPLE 18" FUNERAL VASE 150 G RIPPLE 18" FUNERAL VASE 150
 A DIAMOND & RIB 18" FUNERAL VASE (SWUNG JARDENERE) 425 M GARDEN PT. VT., 10.25" RUFFLED BOWL, BEAUTIFUL 200
 M NESTING SWAN BOWL 165 M IMPERIAL GRAPE 9" PLATE 75
 P STORK & RUSHES MUG, SCARCE 80 P FANCIFUL RUFFLED PLATE, A BEAUTY 235

CRAIG HEELEY, 1132 SPRUCE, SIDNEY, OH 45365 phone: 513-498-9795
 G PEACOCK & FOUNTAIN TUMBLER 275 B PEACOCK & URN PLATE, FENTON 250
 B GOD & HOME TUMBLER 175 B ORANGE TREE PLATE 200
 TG SWAN SALT 30 LAV PEACOCKS ON FENCE PIECRUST EDGE BOWL 300

MRS. RUTH M. FORD, 1985 CRESCENT DRIVE, LAS CRUCES, NM 88005 phone: 505-524-1814 AFTER 7PM
 P SINGING BIRDS MUG 85 M HOLLY 9" BOWL 25
 P SCROLL EMBOSSED 5.5" BERRY BOWL 35 M WATERLILY & CATTAILS TUMBLER 40
 B BUTTERFLY & BERRY TUMBLER 40 B STIPPLED RAYS 6.5" BOWL 18.50
 P ACORN BURRS TUMBLER, N 50 G PEACOCK TAIL SMALL BOWLS, HAVE 2, EACH 22
 A STRUTTING PEACOCK COVERED CREAMER & SUGAR, SET 75

VALMER CROSS SR, PRATTSVILLE, NY 12468 phone: 607-588-6698
 M WIDE PANEL 8" PLATE 30 M REX 6.5" PITCHER 75
 M LOUISA SALT & PEPPER 25 M STORK VASE 35
 G NORTHWOOD RAYS 5" BOWL 15 M SHIP & STARS 8" PLATE 20
 M STAR CENTER 8" PLATE 20 M IRIS & HERRINGBONE WINE 15
 M LEAF RAYS MAPPY 15 M VINTAGE BANDED MUG 25

NORENE CAMPBELL, BOX 107, OCTATE, NM 87734 phone: 505-666-2237
 RED STIPPLED RAYS RUFFLED DISH 350 B FEATHER STITCH RUFFLED BOWL 85
 M CONCORD BOWL 85 G FOUR FLOWERS VT. LOW RUFFLED BOWL 200
 M GREEK KEY PLATE 350 P THREE FRUITS PLATE, A SUPER ONE 195
 W HOMESTEAD PLATE 650 P DANDELION TUMBLER, N 50
 M DANDELION TUMBLER, N 42 P DIAMOND LACE TUMBLER, FACTORY FLAW ON BOTTOM 37

DEE ESTEY, 4446 PAINTERS STREET, NEW ORLEANS, LA 70122 phone: 504-282-8031
 G PLAIN RAYS MINIATURE CAKE STAND 56 G GRAPE & CABLE HAT, N 60
 G HOLLY HAT, MINOR NICK 20 LM PANTHER 5" BOWL 25
 LM FRUITS & FLOWERS BON-BON 42 LM SHIP & STARS 8" PLATE 16
 M HOLLY 4" COMPOTE 14 M ORANGE TREE PUNCH CUPS, HAVE SIX, EACH 9.5
 M THREE FRUITS 9" PLATE, MINOR NICK 22 M CHERRY 5" OVAL BOWL 27

DICK WETHERBEE, 847 STAFFORD STREET, ROCHESTER, MA 01542 phone: 617-892-4420
 P FLOWERS & FRAMES 9" DOME FOOTED BOWL 72 M LEAF & BEADS 7" NUT BOWL, SEE MARCH BULLETIN, P 13 35
 G TREE TRUNK 8" VASE, FLARED TOP 30 P RAYS & RIBBONS/CACTUS EXT 9" BOWL, MILLERSBURG 65
 M LATTICE & POINTS/DAISY CENTER 8" VASE, HARD TO FIND 27 P GRAPE & CABLE 11" 3 FTD ORANGE BOWL, 5" HIGH 155
 B PASTEL SWAN SALT, VERY NICE 27 M STAR & FILE 6" PLATE, A BEAUTY 25
 P SINGING BIRDS TUMBLERS, HAVE 4 @ \$45 EACH OR ALL 170 M ACANTHUS 8" DEEP BOWL, BRILLIANT COLOR 42

EVA BACKER, 12 SHERWOOD ROAD, WEST HARTFORD, CN 06117 phone: 203-233-3761 10AM TO 1PM OR AFTER 6PM
 M SINGING BIRDS MUG, A BEAUTY 60 W LEAF RAY MAPPY 55
 M PEACOCK & GRAPE BOWL 55 A WISHBONE FOOTED BOWL 75
 CLR SHRINERS CHAMPAGNE, NEW ORLEANS 1910 90 V HOLLY COMPOTE, MARIGOLD OVERLAY 65
 B ORANGE TREE MUG 60 M FENTONS FLOWERS (ORANGE TREE) ROSEBOWL 65
 M PALM BEACH SPOONER 90 M MYLADY POWDER JAR 65

JED SHEIBLEY, 304A HILLCREST DRIVE, NEW CUMBERLAND, PA 17070 phone: 717-939-6417
 M BUTTERFLY & BERRY MASTER BERRY BOWL 60 G SINGING BIRDS 7PC WATER SET 550
 M BROOKLYN BRIDGE BOWL 240 W GRAPE & CABLE MASTER ICE CREAM BOWL 200
 P BEADED CABLE FOOTED CANDY DISH 50 M STAG & HOLLY SPATULA FOOTED BOWL 75
 W DOUBLE STEM ROSE DOME FOOTED PLATE 100 M LATTICE & GRAPE TUMBLER 15
 M ORANGE TREE FOOTED 7PC WATER SET 350 G TROUT & FLY ICE CREAM SHAPED BOWL 360

MARTY SCHOETTLE, 80X 188, RD #3, SEWELL, NJ 08080 phone: 609-589-4325

G VINTAGE 9" BOWL, 8 RUFFLED 45 M GRAPEVINE LATTICE 6" BOWL, 8 RUFFLED 35
B GRAPE & CABLE STIPPLED BON-BON 60 M GRAPE & CABLE 9" BOWL, 8 RUFFLED 42
M LUSTRE ROSE 10" FOOTED BOWL, 5" TALL 42 A SHELL 8" BOWL 48
B PEACOCK & FOUNTAIN WATER PITCHER 175 SM SODA GOLD TUMBLERS, HAVE 2, EACH 30
A SINGING BIRDS TUMBLERS, HAVE 5, \$40 EACH OR ALL FOR 175 M GRAPE & GOTHIC ARCHES TUMBLERS, HAVE 5 @ \$20 OR ALL 80

CLIFF & APRIL DECKER, RD #1, BOX 209, WHITNEY POINT, NY 13862 phone: 607-692-3762

LAV THREE FRUITS PLATE, HOLD DEFECT ONE POINT 150 B THREE FRUITS PLATE 125
B HOLLY PLATE, NICE BUT BASE DEFECT 120 B CAPTIVE ROSE PLATE 160
M WINDFLOWER PLATE 110 M FANCIFUL RUFFLED PLATE 100
M APPLE BLOSSOM TWISS RUFFLED PLATE 45 B STRAWBERRY PLATE 90
P TORNADO 7" VASE 125 P CAPTIVE ROSE COMPOTE 50

HAROLD STALEY, 1405 SOUTH HARLEN, FREEPORT, IL 61032 phone: 815-235-4038

M ORANGE TREE SOBLET, SOUVENIR OF CHARLOTTE, MI 65 M OCTAGON SPOONER 45
PO TARGET 12" VASE 45 M CRACKLE AUTO VASES W. BRACKETS, EACH 25
B HEART & VINE BOWL, CANDY RIBBON EDGE 65 M PEACOCK TAIL 6.5" BOWL 20
M IMPERIAL COMPOTE 40 A DOUBLE STEM ROSE DOME FOOTED BOWL 50
G STIPPLED RAYS DOME FOOTED BOWL 55

ART SMITH, 4535 HOLDER CT., LAKELAND, FL 33803 phone: 813-644-4058

CARNIVAL GLASS PAPER ITEM: 1965 WOMEN'S DAY MAGAZINE IN MINT CONDITION. 9 PAGE ARTICLE
100 COLOR PHOTOS, DICTIONARY OF CARNIVAL GLASS. MAKES A NICE DOOR PRIZE FOR YOUR MEETINGS. \$6.25 POSTPAID

MARY HERREN, 520 SOUTH BERRY, MORGANFIELD, KY 42437 phone: 502-359-3121

M HOLLY WHIRL 9.5" FLUTED BOWL, MINT 37 IB HEARTS & FLOWERS 8" FLUTED BOWL, BEAUTY 195
M WINDMILL MILK PITCHER 40 DM CHERRIES SMALL OVAL BOWL 15
M B&B TUMBLER 15 M WATERLILY & CATTAILS TUMBLER, M 20
B GOOD LUCK RUFFLED 8.5" BOWL, 1/2" FLAT CHIP ON EDGE 40

LARRY KEIG, BOX 601, FAYETTE, IA 52142 phone: 319-425-4467 KEEP TRYING

M VINTAGE 9" BOWL, FENTON 30 M LEAF CHAIN/HORSE CHESTNUT EXT. 7.5" BOWL 25
B CHERRY CHAIN 6" RUFFLED BOWL 30 M POND LILY (EXT) BON-BON 25
G GRACEFUL VASE 45 M WINDFLOWER 7.5" ICE CREAM SHAPE BOWL 25
M BIG BASKETWEAVE 8.5" VASE 20

BERNIE MAHN, 1001 ROCK ROAD, DESOTO, MO 63020 phone: 314-586-6226

MG LEAF RAYS HAPPY 40 M FERN PANELS HAT 20
M GARLAND ROSEBOWL 40 G COIN DOT C.R.E. 8.5" BOWL 35
M PEACOCK TAIL 5" BOWL 16 M MAPLE LEAF TUMBLER 16
M STAR MEDALLION MILK PITCHER 40 A BLACKBERRY BRAMBLE COMPOTE 45
G GREEK KEY TUMBLER 110 B CHERRY CHAIN 6" PLATE 110

MALLY McDANIEL, 106 SKY PINES ROAD, GRASS VALLEY, CA 95945 phone: 916-273-2205

M STRAWBERRY SCROLL WATER PITCHER, RARE 1500 G GREEK KEY WATER PITCHER, SUPER COLOR 700
M SPRINGTIME WATER PITCHER, RARE 450 P ACORN BURRS WATER PITCHER 440
M ORANGE TREE ORCHARD WATER PITCHER, RARE 550 P DAHLIA WATER PITCHER, RARE 410
G RUSTIC 17" FUNERAL VASE, RARE 275 A HARLYN WATER PITCHER, RARE, INTERIOR CRACK 250
IB ROSE SHON BOWL, SUPER 300 AD LEAF & BEADS ROSEBOWL, BUTTERSCOTCH 250

CHARLES ADAMS, 2211 SUNSET BLVD., LOS ANGELES, CA 90026 phone: 213-483-7755 OR 384-5001

IB OPEN EDGE BASKET, FENTON, TWO SIDES UP, LOVELY 75 IB GRAPE & CABLE PUNCH CUP 70
M LEAF CHAIN 7" RUFFLED BOWL, FROSTY 70 A DIAMOND BAND WATER PITCHER 200
AMB ACORN 8" BOWL WITH FINE MARIFOLD IRID. 75 P DIAMOND LACE TUMBLERS, HAVE 2, EACH 60
CB ORANGE TREE BREAKFAST SET 90 M ORANGE TREE SHAVING MUG 30
M ENAMELLED FLOWERS CANNONBALL SHAPED WATER PITCHER 90 CB BUTTERFLY & BERRY 7 PIECES, ALL MATCH 425

EDWARD L. HENDERSON, 1111 NORTH COLLEGE, STUTTGART, AR 72160 phone: 501-673-8757 AFTER 7PM

A CORINTH 8" BOWL 40 M FASHION COMPOTE, CHIP ON RIM 10
M DAISY & FERN BOWL 20 A PLAIN 9.5" PLATE 35
M IMPERIAL GRAPE 9" RUFFLED PLATE 20 M FASHION PUNCH BOWL BASE 35
A PERSIAN MEDALLION 5" BOWL, 2 CRACKS 10 M RIPPLE 10" VASE 35
A PERSIAN MEDALLION 5" BOWL 25 M NORTHERN STAR CARD TRAY 20

EVA FULLER, 942 ELDER AVENUE, LOS ANGELES, CA 90006 phone: 213-383-6141

M CHERRY 8.5" FOOTED BOWL, DUGAN 45 A CHERRY 8.5" FOOTED BOWL, DUGAN, NICE 65
P HEAVY GRAPE 6.25" BOWL, FINE COLOR, IMPERIAL 35 M HEAVY GRAPE 6.5" BOWL, INT DOES NOT HAVE DIAMONDS 25
G SHELL & JEWEL SUGAR & CREAMER, NO LIDS, FINE COLOR 40 G COIN DOT 7" ICE CREAM SHAPED BOWL, FINE COLOR 35
A LOUISA ROSEBOWL, EXC IRID ON LAVENDER SIDE 40 CB ORANGE TREE ROSEBOWL, NO CHIPS 40
P DIAMOND POINTS 8.5" VASE, N 28 P MEMPHIS PUNCH CUPS, HAVE 4, ALL FOR 100

VIRGIL ST. JOHN, 1903 HWAY 18 EAST, CLEAR LAKE, IA 50428

M FISHERMANS MUG, SATIN FINISH 200 AD ROSESHOW BOWL 450
M HOBSTAR BAND TUMBLER 40 M PERSIAN GARDEN 6" PLATE 65
CB PANTHER SAUCE BOWL 95 A MLS86 HOLLY BON-BON 75
CB PEACOCK & FOUNTAIN COMPOTE 395 M STAR MEDALLION GOBLET 50
P ACORN BURRS TUMBLER 75 VAS CONCAVE DIAMONDS TUMBLE-UP TUMBLER 100

GEORGE BOND, 1406 NORTH FERNCREEK AVENUE, ORLANDO, FL 32803 phone: 305-894-0327 AFTER 5:30PM PLEASE

M OCTAGON GOBLET, HAVE 2, EACH 20 M OCTAGON WINE DECANTER AND 2 WINES, BEAUTIFUL 125
M DRAGON & LOTUS LOW RUFFLED BOWL 30 M OCTAGON TUMBLER 20
G ACORN BURRS 7PC WATER SET, 3 TINY NO HARM NICKS 650 P GRAPE & CABLE BREAKFAST CREAMER & SUGAR 125
P GRAPE & CABLE 7PC WATER SET 350 P GRAPE & CABLE MASTER PUNCH BASE 150
M FISHERMANS MUG 200

TOM MORDINI, 36 NORTH MERNITZ AVENUE, FREEPORT, IL 61032 phone: 815-235-4407

G OLD ROSE DISTILLERY GRAPE & CABLE PLATE 160 M CUT COSMOS TUMBLER, 2 SM ROUGH SPOTS ON HIGH POINTS 125
M PEACOCK & URN 9" PLATE, SUPER COLOR 195 VAS FENTON OPEN EDGE UFFLED BASKET 45
B FENTONS FLOWERS NUT BOWL, RARE IN THIS COLOR 125 A PERSIAN MEDALLION COMPOTE, SCARCE 120
16 PEACOCKS PLATE, RIBBED BACK, N 265 P NESTING SMAN, RADIUM 240
G IMPERIAL GRAPE 9" FLAT PLATE 80 M FENTON OPEN EDGE BOWL, FROSTY 65

DENNIS KECK, 126 CHERRY, PUNISUTANNEY, PA 15767 phone: 814-938-7426

G WILD STRANBERRY HANDGRIP PLATE, BASKETWEAVE EXT. 165 B PEACOCKS RUFFLED BOWL, N, GOLD IRID 185
M COLONIAL HANDLED TUMBLER OR MUG, SIGNED W IRON CROSS 75 M LITTLE STARS RUFFLED BOWL, BEAUTIFUL IRID, RARE 9" 275
M POPPY PICKLE DISH 40 1G LEAF CHAIN 7" RUFFLED BOWL, LT GOLD IRID, RIM TIC 195
M GRAPE & CABLE PITCHER, MOLD LINE ROUGHNESS, 6000 95 OLG THIN RIB VARIENT MID SIZED FUNERAL VASE, 16" TALL 95
16 CORN VASE, FROSTY, SEPERATION UNDER FOOT, NO HARM 175 B DRAPERY 8" VASE, USUAL FOOT FLAKE, SUPER COLOR 60

HARM WESTERHUIS, RR #1, BOX 49, PLATTE, SD 57369 phone: 605-337-3631

G HEAVY GRAPE 11" CHOP PLATE 115 M IMPERIAL GRAPE WATER PITCHER AND 3 TUMBLERS 125
M HEAVY GRAPE LARGE BERRY BOWL 40 P IMPERIAL GRAPE DECANTER, NO STOPPER 70
M IMPERIAL GRAPE RUFFLED PLATE 35 M GRAPE & CABLE COOKIE JAR, ONE FLANGE SMOOTHED 90
M IMPERIAL GRAPE DECANTER, NO STOPPER 35 PM RIBBED LIGHT SHADES, HAVE 3, EACH 25
M PANSY SUGAR BOWL 17.5 M LBJ HAT 15

MIKE & SANDRA JERRED, 510 EAST 3RD STREET, WELLSVILLE, KS 66092 phone: 913-883-2028
M WILD ROSE SYRUP, SCARCE 525

JACKIE TYLER, BOX 647, BALDWIN, WI 54002 phone: 715-684-2397

AD DRAPERY ROSEBOWL, EXC COLOR & IRID, CRACK IN BASE 100 PD SKI STAR 10.75" RUFFLED BOWL, LOVELY 185
G MLS86 PEACOCK & URN 10" BOWL, BEAUTIFUL 245 A MLS86 CHERRIES MASTER ICE CREAM BOWL, SUPER 150
B BUSHEL BASKET, N, GOOD COLOR, SOME ROUGH MOLD WORK 85 DM ORANGE TREE LARGE FRUIT BOWL, FTD, FANTASTIC COLOR 75
A ACORN BURRS BUTTER BOTTOM, CRACK IN BASE 20 G MLS86 PRIMROSE BOWL, SATIN 85
80 SCALES BOWL 250 P RASPBERRY 5PC WATER SET, SOME BASE ROUGHNESS 400

NORMA WAGNER, BOX 52, BAGLEY, IA 50026 phone: 515-427-5749

P HATTIE CHOP PLATE, FLAKE OFF BACK OF 1 POINT 485 P HATTIE BOWL 55

JOHN MIKKONEN, RR #2 - BOX 474F, SHAKOPEE, MN 55379 phone: 612-445-6098

M CHERRY CIRCLES BON-BON 50 M GRACEFUL 45
P WISHBONE & SPADES 6" PLATE, SUPER 140 DM VINTAGE FERNERY 50
B PEACH TUMBLER 75 M MILADY TUMBLER 80
M GRAPE & CABLE SPOONER 40 M GRAPE & CABLE BON-BON 45
M FERN COMPOTE 80 M UNSHOD TUMBLER 15

** CARNIVAL GLASS WANTED ** CARNIVAL GLASS WANTED ** CARNIVAL GLASS WANTED **

CLIFF & APRIL DECKER, RD #1 - BOX 209, WHITNEY POINT, NY 13862 phone: 607-692-3762
P ORIENTAL POPPY PITCHER A MARILYN PITCHER OR SELL TUMBLER
** WANT TO HEAR FROM PEOPLE INTERESTED IN CARNIVAL BUTTONS **

MRS. JAMES CAPPS, 1216B NORTH WILLOW, CLOVIS, CA 93612 phone: 209-435-7786
IB PEACOCK & FOUNTAIN BUTTER BASE IB GRAPE & CABLE CENTERPIECE BOWL (POINTS TURNED UP)

N.R. BLACKBURN, 25 TROY STREET, APPLECROSS, PERTH, WEST AUSTRALIA 6153
ANY AUSTRALIAN PIECES ESPECIALLY KIWI & ENU *ANY* BUTTONS AND HATPINS
M BASE FOR DAISY BLOCK RONDOAT G GRAPE & CABLE SAUCER

**** I WILL BE AT THE HUACGA CONVENTION THIS YEAR ****

MORENE CAMPBELL, BOX 107, OCTATE, NH 87734 phone: 505-666-2237
RED CHRYSANTHEMUM BOWL *ANY* MANY STARS BOWL
ANY COBBLESTONES BOWL RED ORANGE TREE BOWL
IB WATERSETS OR PITCHERS M HEAVY IRIS TUMBLERS 1 TO 4

AL RETTKE, 14226 EAST 143RD LANE, BURNSVILLE, MN 55337 phone: 612-432-7489
G,B PEACOCK & URN MASTER ICE CREAM BOWLS WITH SUPER COLOR, M IB GRAPE & CABLE POWDER JAR LID OR ANY PLATE
P PEACOCK & FOUNTAIN PUNCH BOWL TOP A,P ACORN BURRS BUTTER LID

CRAIG HEELEY, 1132 SPRUCE, SIDNEY, OH 45365 phone: 513-498-9795
AO BUSHEL BASKET, EIGHT SIDED B TROUT & FLY BOWL
DN OHIO STAR VASE IG SINGING BIRD MUG OR ANY OTHER UNREPORTED RARITIES

DENNIS KECK, 126 CHERRY STREET, PUNKSUTANNEY, PA 15767 phone: 814-938-7426
G PEACOCK & FOUNTAIN SUGAR AND/OR CREAMER M BASKETWEAVE 4-RUFFLED BASE FOR PERSIAN GARDEN FRUIT BOWL
G BUTTERFLY & BERRY COVERED SUGAR LM GRAPE & CABLE PERFUME STOPPER
ANY BUTTERFLY & BERRY HATPIN HOLDER *ANY* FORMAL VASE
G WISHBONE EPERGNE BASE G VINTAGE EPERGNE BASE
ANY MILLERSBURG HOBMAIL BUTTER BASE

HAROLD STALEY, 1405 SOUTH HARLEM, FREEPORT, IL 61032 phone: 815-235-4038
G FEATHERED SERPENT LARGE BERRY BOWL P PEACOCK & FOUNTAIN SUGAR JAR, I HAVE LID

EVA BACKER, 12 SHERWOOD ROAD, WEST HARTFORD, CN 06117 phone: 203-233-3761 10AM TO 1PM OR AFTER 6PM
M STOPPER TO DIAMOND & SUNBURST WINE DECANTER A MEMPHIS PUNCH BOWL ONLY
IB GRAPE & CABLE POWDER LID ONLY A STOPPER FOR OCTAGON DECANTER
SN STAR OF DAVID BOWL WITH GOOD COLOR, IMPERIAL M KITTENS CUP & SAUCER, WILL BUY DAMAGED

THELMA GRIBBLE, 3018 TRENTON AVENUE, BREMERTON, WA 98310 phone: 206-377-2292
RED CHRYSANTHEMUM BOWL, NO SILVER IRID AO POPPY PICKLE/RELISH DISH, PASTEL ONLY
G STOPPER FOR BUZZ SAN CRUET A,G,P STAG & HOLLY 10.5-11" BALL FTD BOWLS WITH SUPER IRID.

LARRY KEIG, BOX 601, FAYETTE, IA 52142 phone: 319-425-4467 KEEP TRYING
ANY IOWA SOUVENIRS-BASKETS, BOWLS, PLATES WITH STENCILED CITY NAMES G STOPPER FOR IMPERIAL GRAPE DECANTER
G LID FOR INVERTED STRAWBERRY POWDER JAR P LID FOR VINTAGE POWDER JAR

JACKIE TYLER, BOX 647, BALDWIN, WI 54002 phone: 715-684-2397
** ANY COLOR PERSIAN MEDALLION ROSEBOWLS **

MALLY McDANIEL, 106 SKY PINES ROAD, GRASS VALLEY, CA 95945 phone: 916-273-2205
W, IB, IG, AO GOOD LUCK BOWLS AND/OR PLATES
ANY ROSE SHOW OR POPPY SHOW PLATES OR BOWLS WITH EXCELLENT COLOR

CHARLES A. ADAMS, 2211 SUNSET BLVD., LOS ANGELES, CA 90026 phone: 213-483-7755 OR 384-5001
M FASHION PUNCH BOWL WITHOUT BASE M TWINS FRUIT BOWL TOP
P GRAPE & CABLE BUTTER BASE ONLY *ANY* ADVERTISING PIECES
A GRAPE & CABLE COLOGNE STOPPER A STOPPER FOR GOLDEN HARVEST DECANTER
M OCTAGON STOPPER & WINES

EVA FULLER, 942 ELDEN AVENUE, LOS ANGELES, CA 90006 phone: 213-383-6141
G WREATH OF ROSES PUNCH BOWL BASE

TOM NORDINI, 36 NORTH HERNITZ AVENUE, FREEPORT, IL 61032 phone: 815-235-4407
P STOPPER FOR IMPERIAL GRAPE DECANTER P STOPPER FOR GRAPE & CABLE COLOGNE BOTTLE

EDWARD REZARCH, RR #1 - BOX 256A, BLOOMER, WI 54724 phone: 715-568-5680
M PEACOCK & FOUNTAIN SPOONER, CREAMER AND TUMBLERS M PANTHER SHALL BERRY BOWLS WITH RUFFLED EDGE
M BUTTERFLY & BERRY WATER PITCHER M FLORAL & GRAPE TUMBLER

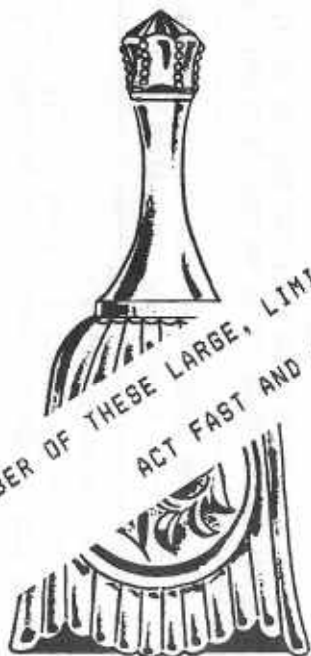
JOHN MIKKONEN, RR #1 - BOX 474F, SHAKOPEE, MN 55379 phone: 612-445-6098
RED FLORAL & OPTIC CAKE PLATE IG GRAPE ARBOR TUMBLER
ANY PASTEL HEARTS & FLOWERS PLATE IG EMBROIDERED NUMS PLATE

The H.O.A.C.G.A. Club has chosen a carnival glass bell, featuring the portrait of Hary Northwood, as our 1985 souvenir. Northwood's portrait will be a part of the mold work and it will be made from a portrait of Harry Northwood during the time he was heavily engaged in the production of carnival glass. The beautiful Circle Scroll pattern will be used as the pattern for the bell. The color will be in red and the H.O.A.C.G.A. logo and date will be on the inside of the bell. They will also contain the Fenton trademark.

This will be the first of a series we have planned that will honor the makers of our well loved carnival glass. In 1986 we plan on a bell using the portrait of Frank L. Penton, one of the founders of the Fenton Art Glass Co.. We also plan on following with John Fenton of the Millersburg Glass Company in 1987 and on to Imperial etc..

We think that this souvenir will make a beautiful and very collectable piece of carnival glass and will also honor those responsible for the making of our favorite iridized glass. We hope that you will be as excited about these souvenirs as we are and that you will get your orders in as soon as possible. Members may order as many as you wish but please have your orders in by as they will be made soon after that and we need to know how many t-

A SMALL NUMBER OF THESE LARGE, LIMITED EDITION BELLS WERE LEFT AS OF APRIL 1st
 ACT FAST AND AVOID BEING DISAPPOINTED!!!



Send Remittance To:

MR. JOHN BRITT
 3048 TAMARAK DRIVE
 MANHATTAN, KANSAS 66502

I WISH TO ORDER _____ 1985 SOUVENIRS BELLS AT \$35.00. If shipped add \$2.50 postage.

NAME: _____

ADDRESS: _____

CITY, STATE, ZIP: _____

WILL PICK UP AT CONVENTION _____ PLEASE SHIP _____