

EX BULLETIN SECRETARY
AL RETTKE
14226 East 143rd Lane
Burnsville, MN 55337

FIRST CLASS MAIL

SEND ALL CORRESPONDENCE TO THE
NEW BULLETIN SECRETARY:

MARGE MILLER
7605 N.W. EASTSIDE DRIVE
KANSAS CITY, MO 64152

MAY 15, 1985

IF YOUR LABEL SAYS 6-85,
YOUR DUES ARE DUE
PAY THEM NOW!!!



**Heart of America
Carnival Glass
Association Inc.**

Membership June to May
\$20.00 per couple or single

Published the 15th
of each month

PRESIDENT

Cooley Miller
7605 N.W. Eastside Drive
Kansas City, MO 64152
816-741-4635

VICE-PRESIDENT

Diane Treff
13646 Leavenworth Road
Kansas City, KS 66109
913-721-2917

TREASURER

Karen Engel
35292 Oak View Drive
Brownsville, OR 97327
503-466-5989

SECRETARY

Lucile Britt
3048 Tamarak Drive
Manhattan, KS 66502
913-539-1933

BULLETIN SECRETARY

Al Rettke
14226 East 143rd Lane
Burnsville, MN 55337
612-432-7489

All monetary figures quoted are in U.S. dollars.
Please make checks for dues payable to H.O.A.C.G.A.
and send them to the secretary as listed above.

MINUTES OF THE 1985 ANNUAL MEETING OF THE
HEART OF AMERICA CARNIVAL GLASS ASSOCIATION

At 1:45 PM on April 26, 1985, President Cooley Miller welcomed all members to the 1985 convention. After greetings and a few announcements, the President called the annual meeting to order at 2:00 PM.

Diana Treff read the minutes of the 1984 Annual meeting. The minutes were approved as read. Treasurer Karen Engel gave the Fiscal Year Treasurers Report. For the period 6-1-84 to 3-31-84 total receipts were \$22,315.54, total disbursements \$12,903.16 for a net increase in the fund balance of \$9412.38. The total fund balance is \$28,848.37. The Treasurers report was accepted as read.

Souvenir Chairman John Britt gave a report on the 1985 souvenir. Lucile Britt read a letter from Elizabeth Northwood Robb expressing her gratitude to the club for sending her one of the 1985 Bell Souvenirs. Mrs. Robb is Harry Northwood's granddaughter and furnished the portrait for our bell. Notebook Chairman Robert Grisso gave a report on the Rose Bowl Inserts.

President Miller opened discussion as to the location of the 1985 convention. Most members present felt that the staff and management were certainly very cooperative. It was mentioned that the hotel was not close to many restaurants, that the hotel's only source of entertainment for young children was the outdoor pool and April isn't warm enough for outdoor swimming.

President Miller introduced all present board members and each made a brief statement.

Herbert Treff reported on his findings on mailing the Bulletin at a not-for-profit rate. He also reported on hiring a firm to print and post the Bulletin. There was marked discussion on both topics.

Herbert Treff, nominating committee chairman, was called upon to begin the nominations for new Board members. He presented the following slate: President: (blank), Vice-President: Nadine Paulsen, Secretary: Glenn Fortney, Treasurer: Karen Engel, Bulletin Secretary: Marge Miller.

After the presentation of the slate, Nominating Chairman Herbert Treff opened the floor to nominations for president, those nominated were Diana Treff, Cooley Miller and Robert Grisso. Diana Treff and Cooley Miller both declined, Robert Grisso Accepted. All other nominees for the other four Board positions declined. Therefore, the 1985-86 board members are as follows:

PRESIDENT - ROBERT GRISSOM - RAYTOWN, MO
VICE-PRESIDENT - NADINE PAULSON - OLATHE, KS
SECRETARY - GLEN FORTNEY - BUCKNER, MO
TREASURER - KAREN ENGEL - BROWNSVILLE, OR
BULLETIN SECRETARY - MARGE MILLER - KANSAS CITY, MO

With no further business the meeting was adjourned until May 26, 1985. The next meeting to be at the KCI Holiday Inn, meeting to begin at 2:00 PM.

DIANA TREFF, VICE-PRESIDENT

*** "A NOTE OF THANKS" ***

The convention is over and we are somewhat relieved!! It's always fun but a lot of work. Wilf & Ruth Nash helped me a great deal Wednesday night, Ruth wrapped all the give away gifts and Wilf delivered a lot of the miniature room arrangements. Then on Friday, Eleanor Rodenhouse and Floyde & Cecil Whitley lent their helping hands with the 24 table centerpieces we made for the banquet. After the business meeting Winnie Brise came up to help and put the finishing touches on the centerpieces. I couldn't have gotten it done without their help. THANKS A MILLION!!

MARGE MILLER

CEDAR RAPIDS ICGA CONVENTION, JUNE 19-22

Besides an auction in which many outstanding plates, advertising pieces and other rare items will be sold, Don Moore's banquet presentation on "Rare, Unusual and One of a Kind", Smokey & Betty Cloud's educational seminar on small plates and a "Show-and-Tell" time in which collectors may bring items to be identified and commented on, many of the rarest and most beautiful water sets will be displayed in one central location. The International Carnival Glass Convention will be held at the Holiday Inn Holidome in Cedar Rapids, IA from June 19-22.

The convention chairpersons, Larry Keig, 301 Union Street, Fayette, IA 52142 (319-425-4467) and Barb & Don Chamberlain, 54 Kennedy Street, Winthrop, IA (319-935-3925), the Board of Directors and officers take this opportunity to invite all HOACGA members and others who belong to no clubs, as well as members of all other clubs, to attend. Reservations are best made by writing the Holiday Inn, 2401 Williams Blvd., Cedar Rapids, IA 52404.

Thanks to all of you, near and far, for your support while I served on the Board of the HOACGA. It has been a real pleasure. I hope to again, someday, get the chance to run for office. Please support your new Board members this year, especially during the first few months of transition. My Best Wishes to Bob, Karen, Nadine, Glen and Marge.

DIANA TREFF

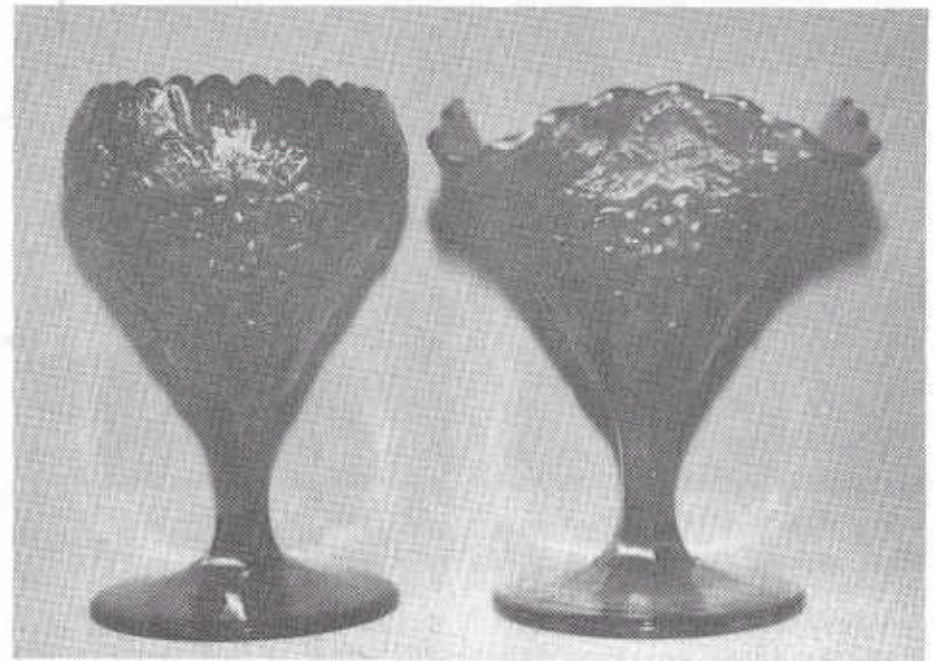
NOTICE: The rumor that has the most recently sold BIG THISTLE PUNCH BOWL in a New York collection (i.e. Tom Burns' collection) is 100% false. For the record, the punch bowl and base is in Leon & Barb Spangler's collection, we are life long residents of Pennsylvania.

LEON SPANGLER

PAGE 3

PICTORIAL PATTERN PARADE

by John & Lucile Britt



MILLERSBURG DEEP GRAPE ROSEBOWL

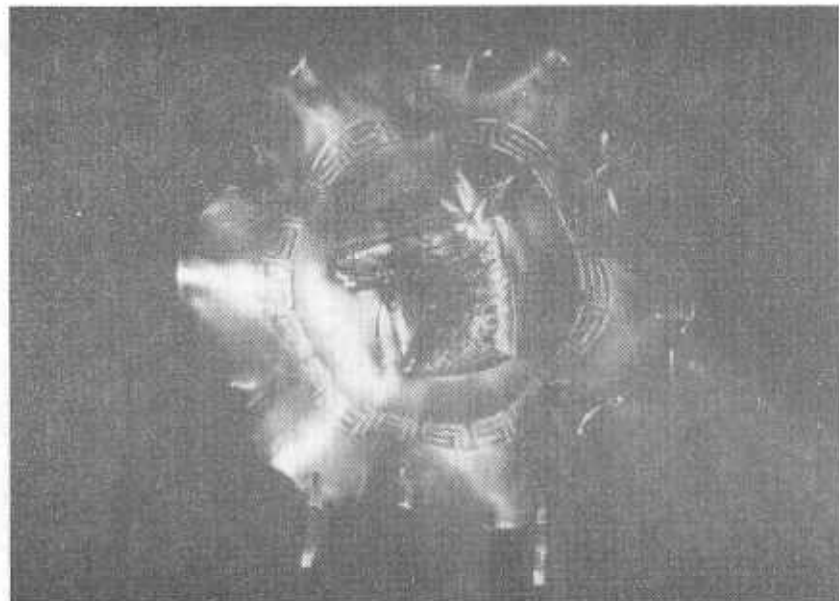
The "Deep Grape" rose bowl shown above on the left is the first one ever reported in that shape to the best of our knowledge. This Millersburg piece showed up for sale at the Tampa Bay Club Jamboree in Lakeland, FL this February. It was found in the state of Ohio.

It is in green base glass with a glossy radiant iridescence. The piece stands 7 1/8" tall with a top opening of only 3 3/4". We believe this piece to be a super Millersburg rarity. It is pictured beside the square shape "Deep Grape" compote in marigold. This compote was also made in the flared out round shape.

This Millersburg pattern was produced in green, marigold, amethyst and blue. The blue example we have seen was in the round shape. This is also very beautiful and extremely rare.

JOHN & LUCILE BRITT

PAGE 4



PONY BOWL IN AQUA
MAKER UNKNOWN FOR SURE, ATTRIBUTED TO DUGAN

It would be nice to say that this was a Dugan piece and let it go at that. However, I am a firm believer that this is a Northwood piece for the following reasons. First it has the "Greek Key" which in itself is not conclusive, the Nu-Art plates also have this.

Let us also look at the colors of marigold, amethyst, aqua (shown above), ice green and ice blue (I once owned an ice blue one). I do not know of any company except Northwood that made the true ice blue and true ice green. All other companies made a darker shade. I do believe this is conclusive evidence that this is Northwood. This is my belief, and I am sure you have yours. It could well be that Northwood farmed out this pattern to Dugan during busy times.

This bowl has the pony's head in silver. Color around the head extending to the Greek Key is a rust color. On the outside of the Greek Key and extending to the edge of the bowl the color is aqua and of course, the base is aqua.

These are rare and will sell in the ballpark of \$350-400. It is the only aqua piece I have ever seen, although there are probably some more out there someplace. It is a very beautiful bowl and very hard to come by. These Pony bowls are all collar based and none are footed.

** REMEMBERING FERN **

We were deeply saddened to hear about Fern Waldsmiths passing on April 6th. We had been concerned over her illness for several months yet to have her go seemed such a shock. As we look back to the early days of Carnival, we recall she and Louie were always there. Many pleasant memories come to mind as we look back over the years and sad thoughts to look ahead and know there will always be a vacancy. Each Carnival friend has their own special spot in our hearts - it hurts to give one up every time.

A fond farewell, Fern. Our hearts go out to Louie as he faces the lonely days ahead. A remembrance card or note to him would help so much to brighten the dark days on a loss so hard to bear.

>>> AN ESTATE AUCTION <<<

While an estate auction will have lots of collectables, they will also usually have some carnival. One was advertised in the Antique Trader at Circleville, Ohio for April 17-18th stating over 200 pieces of carnival. We decided to check it out and so did a large number of our Carnival group including Joe Corrothers. Joe has found more rare carnival lately. He showed a marigold Gay Nineties tumbler, a plain Millersburg lamp in green, and a green Mitered Ovals vase. He surely has a nose for carnival as he sure does sniff out some rare pieces all the time.

The glassware was sold on Thursday and prices held up very well even though there was nothing special. A blue Fanciful plate brought \$275, green Good Luck bowl 190, marigold Grape & Cable perfume 250, blue Peacock @ Fountain waterset 420. We left early for home. It was quite nice to see so many of our friends and that made the trip worthwhile.

GRACE & BYRON RINEHART, Charleston, WV

NEWS FROM TAMPA BAY

The TBCGC met April 28 at the home of Nicholas and Maria Vafiadis in Tarpon Springs. At the business meeting, Art Smith announced that the 1986 Lose Your Heart To Carnival Glass Jamboree will be February 13-15, 1986. A special rate of \$36 per room will apply. Art presented a program on Carnival glass pitchers as featured in Don Moore's recent Antique Trader article. A white elephant auction followed. The next meeting will be May 19th.

ARTHUR I. SMITH

I have just joined the HOACGA and received my first information today. I was very impressed with the souvenir bell and hope my check will get to you in time to get a bell. Thank you. ADA B. McBRIDE

EDUCATIONAL TUMBLER SERIES

by John & Lucile Britt



DIAMOND LACE TUMBLERS in Purple, Marigold and Lavender

The popular "Diamond Lace" tumblers and water sets were produced in volume in purple. It is not any wonder that this water set was so very popular back in its production days, because it has such great beauty, super color and outstanding iridescence. This is one of the water sets where marigold pieces are considered "rare" while those in purple are plentiful. I have seen very few marigold "Diamond Lace" tumblers and only one in lavender. I have never had the privilege of viewing a marigold water pitcher in this pattern even though I have heard rumors that several did exist. I have searched in vain for years to find a green "Diamond Lace" tumbler. Since I have seen a few pieces of the berry set in green, I have always thought that a tumbler would show up someday. None has been reported to the best of my knowledge.

I have always been convinced that "Diamond Lace" was made and iridised by Imperial. However, to this date, I have never been able to find any literature in old Imperial catalogs to actually prove they made this pattern. Some claim this to be a Heisey pattern, including the Kamm books. Collectors in the Indiana, PA area say they have good reason to believe that it was made by Dugan. Since "Diamond Lace" was such a mass produced water set and was made almost entirely in purple, while other Imperial pattern water sets were chiefly made in marigold and are scarce to rare in purple and with some sets actually not being made in purple at all, is reason enough to give a lot of thought to the maker of this pattern. Until someone can prove that it was made by another factory, I strongly lean to Imperial as the producer.

This is article #88 in this series. Next month we will cover "Jewelled Heart", a Dugan/Diamond pattern.

*** 1985 CARNIVAL CALENDAR ***

JUNE 7-8 - Annual CONVENTION, Lincoln Land Carnival Glass Club
Midway Motor Lodge, Elk Grove Village, IL. John Britt, Banquet speaker.
Contact Rick Kojis @ 414-327-0321 for more details, he loves to talk anyway.

JUNE 19-22 - 19th Annual CONVENTION, International Carnival Glass Association
Holiday Inn, Cedar Rapids, IA. Holidome with large windows for displays.
Thursday auction, Friday Banquet with Don Moore as speaker, a full slate of
great events. Contact either Don & Barb Chamberlain at 319-935-3925 or
Larry Keig at 319-425-4467 for further information.

JULY 4-6 - CONVENTION, Northern California Carnival Club, to be held at the Red
Lion Inn, San Jose. Contact: Karma Vullo, 44762 Camellia Dr., Fremont, CA 9453

JULY 11-13 - 20TH Annual CONVENTION, American Carnival Glass Association
Midway Motor Lodge, Elkhart, IN. Thursday Auction, Guest speakers will be
Marie McGee and Helen James. For details call Mrs. Gerry Hunter 219-353-7276

AUGUST 8-10 - 12TH Annual CONVENTION, Pacific NW Carnival Glass Club
At the Holiday Inn HoliDome in Eugene, OR. There will be another famous
"Salmon BBQ Picnic" to kick off the convention along with lots of other
exciting events. For more info contact Karen Engel, 35292 Oak View Drive,
Brownsville, OR 97327 503-466-5989 or work 503-466-5191

SEPTEMBER 6-8 - 3RD Annual CONVENTION, New England Carnival Glass Association.
Quality Inn, Chicopee, Mass. Sunday Auction. For more information contact
Howard Robinson, convention chairman, 413-536-4319

OCTOBER 11-13 - 2nd Annual CONVENTION, Canadian Carnival Glass Club
George Loescher, banquet speaker on Saturday, auction Sunday, I.D. clinic & more
Conestoga Inn, Kitchener, Ont., for reservations phone 519-744-5242 by May 30th.
For Info Contact: Janet Knechtel, P.O. Box 3023, Kitchener, Ontario N2G 4R5

OCTOBER 18-20 - CONVENTION of The Air Capitol Carnival Glass Club
Airport Sheraton Inn, 5500 W. Kellogg, Wichita, KS (I-235 & US 54 West)
Contact Don Kime, 1202 West 4th, Haysville, KS 67060

Carnival Cameos

BY DONALD MOORE



COSMOS & CANE / HEADDRESS

This rosebowl raises some interesting questions. Cosmos & Cane is a U.S. Glass Company pattern while Headdress (the interior pattern) is known to have been used extensively by the Ada Glass Company in Sweden. We know that glass companies here in the U.S. pirated each others patterns. Until recently, however, we didn't realize this was sometimes done by companies located in different countries. We now know that Sowerby in England copied Imperial's Scroll Embossed pattern. Evidence now points to the fact that the Riihimaki Glassworks of Finland may have copied the Four Flower, Tiger Lily and Drapery patterns. There is no reason to believe the Ada Glass Company may not have done the same thing with this Cosmos & Cane pattern. However, in this case, I feel the reverse may be true and U.S. Glass may have copied Ada's Headdress.

My reasoning for this is the fact I have seen several 7 1/2" Cosmos & Cane bowls with the Headdress interior that I am sure came from the same mold as these rosebowls and they have been found in both marigold and white. These are typical U.S. Glass Company colors for their Cosmos & Cane. As far as I know, the Ada Company produced no white. I have learned of three of these rosebowls, all are marigold. One of these sold for \$150 at the Spierling auction in 1982.

*** NEWS FROM AIR CAPITOL ***

Our Secretary, Zona Paul, has been hospitalized with a serious heart attack. We hope she has a speedy recovery.

Rolan Kuhn gave the educational program on carnival glass made in Europe. He brought several pieces to show several different patterns. Seeing several pieces of it in different colors and patterns makes one appreciate the European glass more. I sometimes think we collectors sort of shove it into the back of the shelf or cabinet. We are all excited about our upcoming meeting in May. We will be traveling to Booker, Texas where Alnora & Dan Snell will be our hosts.

DONALD E. KINE, ACCGC Secretary

*** NEWS FROM CANADA ***

George Loescher will be the banquet speaker at our Second Annual Convention at Kitchener, Ontario on Saturday October 12th. The buffet will cost only \$12.50 Canadian. There will be double the space for tables at the Show & Sale on Saturday. The auction on Sunday will be a collection of over 250 pieces. Rooms prices are \$65 double occupancy (\$47 US) and you must phone your reservations in by May 30th, the number is 519-744-5242. Our souvenir is an Ice Green Opalescent Fenton basket in the Jack in Pulpit shape. It is beautiful and compares very well to the old glass.

A few of our members recent finds: White Poppy Show plate, Ice Blue Tree Trunk vase, Ice Blue Fruits & Flowers bon-bon, Black Fenton Basket, Ice Green Open Edge basket in the Ice Cream shape. SEE YOU IN KITCHENER!!

JANET KNECHTEL, CCGC Convention Chairperson

We are very impressed with the Heart Of America Carnival Glass Assoc. The newsletter is very informative and a pleasure to read. Some of the articles make me feel like I am in someone's kitchen, drinking coffee and talking about carnival glass. We would like very much to attend the convention this year but our schedule prevents it. Keep up the good work.

KEN BENNETT, New Mexico

=====

THE 1985 HOACGA CONVENTION IN PICTURES

=====

by Al Rettke

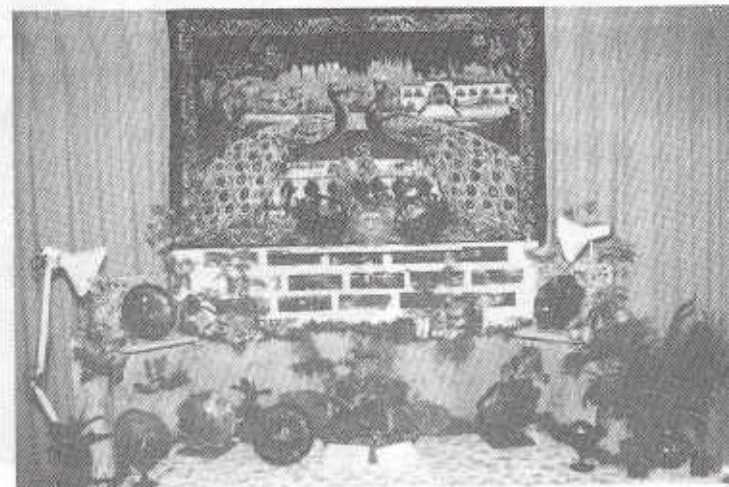


Shown above is a view of less than half of John & Lucile Britt's glass for their banquet talk. Shown left to right are Lucile Britt, Marilyn Giada, Marge and Cooley Miller.



Shown to the right are a very surprised Floyd & Cecil Whitley accepting a marigold "People's vase" that was presented by President Miller. It must have been a forerunner to the other Peoples vases, the ladies on this one don't have their clothes on!!

PAGE 11

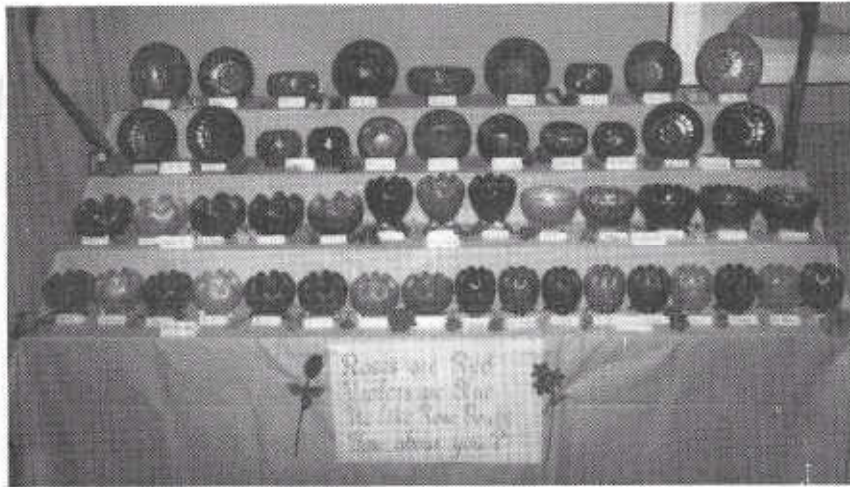


Shown above is the FIRST PLACE ROOM DISPLAY of MARGE & COOLEY MILLER. Their daughter Patty helped with the theme of "Peacock Gardens"

Shown below is the SECOND PLACE ROOM DISPLAY of CONNIE & DON MOORE. Everything shown is ICE GREEN, it was beautiful and a visual treat.

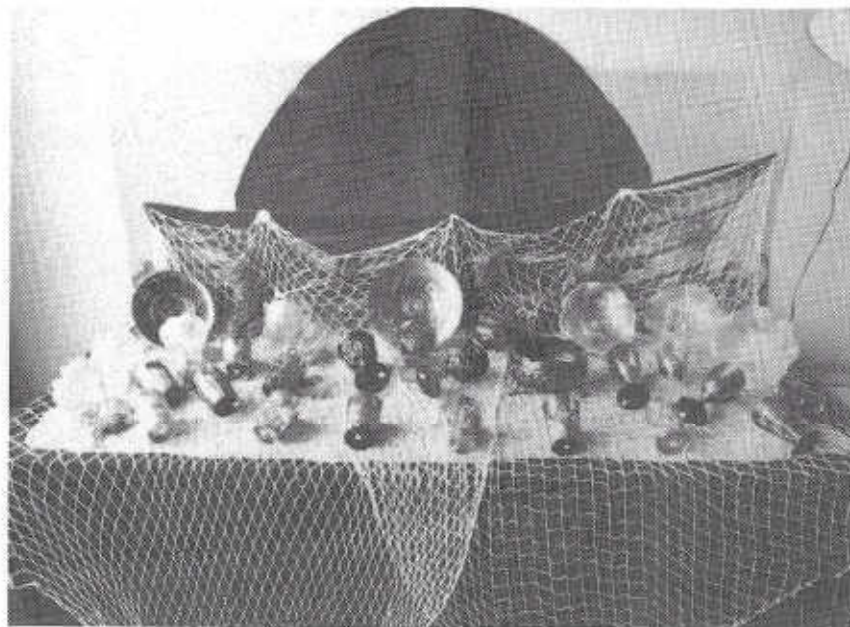


PAGE 12



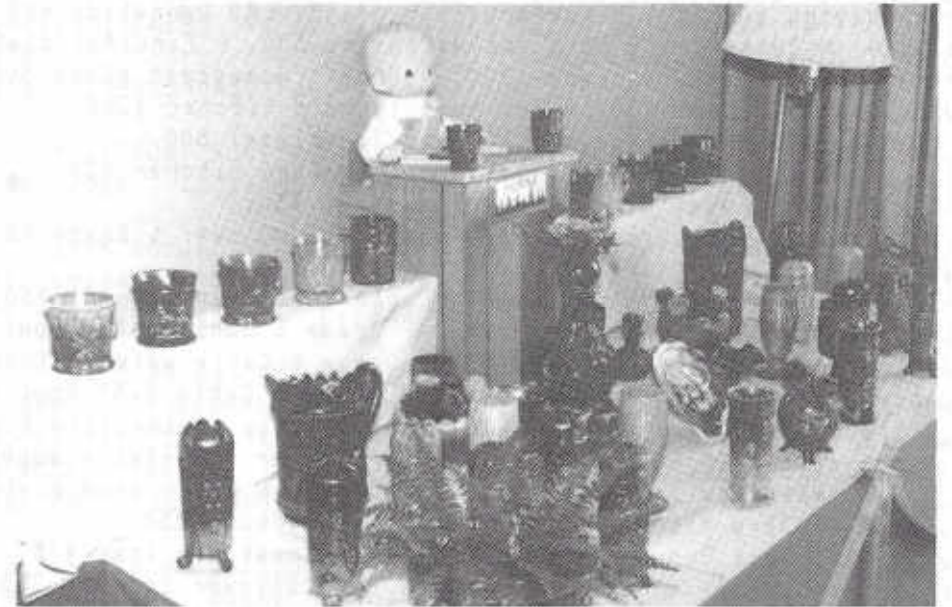
Shown above is the THIRD PLACE ROOM DISPLAY of ROBERT & NANCY STREMMING
They have a SUPER collection of rosebowls!!

Shown below is the FOURTH PLACE ROOM DISPLAY of DON KIME & ROLAND KUHN
There were really some "Prize Catches" on this table.



I am sorry, but I missed the FIFTH PLACE DISPLAY of DOTTIE & BOB GALLO
The title of their display was "Frolicking Bears".

Shown below are a couple of displays I feel deserve an "Honorable Mention".
Christ & Ethel Harnish had a baby Tommy Burns auctioneering Carnival.
Cecil & Floyd Whitley showed some very high powered Orange Tree
Loving Cups including the only known Peach Opal and Aqua Opal in the back.



A GOOD TIME
WAS HAD
BY ALL

HDACGA CONVENTION AUCTION RESULTS
furnished by Al Rettke

PO Honeycomb rosebowl 220, B Little Fishes 10" bowl 65
 R Cherry Circles bon-bon (point smoothed) 1700, R Vintage 10" bowl 600
 R Orange Tree 8" I.C. bowl 825, R Fenton Grape & Cable footed bowl 1200
 R Two Flowers 8" bowl 1050, Celeste Blue Double Stem Rose bowl 350
 R Horses Heads nut bowl 900, R Plume Panels 10.5" vase 500
 R Orange Tree shaving mug 550, M Fishermans mug 185, LAV Dandelion mug 300
 M Town Pump 1300, M Butterfly & Fern 7pc water set 500, P Fanciful plate 200
 P Nu-Art Chrysanthemum plate (super) 1200, P Nu-Art Homestead plate 500
 B Heart & Vine plate (super) 320, W Ten Mums Tankard Pitcher 1200
 W Ten Mums tumbler 175, M Springtime tableset (complete) 500
 VAS Peacock & Grape bowl 175, P Oriental Poppy tankard pitcher 525
 P Thumbprint & Ovals 5" vase 475, AO Ose Show bowl 450,
 AQUA-Bushel basket 300, AO Daisy & Drapes vase 400, AO Leaf & Beads RB 200
 P Christmas Compote 2100, AO Tree Trunk std vase 275,
 AO Fruits & Flowers bon-bon 450, M Grape & Cable Sweetmeat (super) 750
 M Grape & Cable large covered compote 1250, P Grape & Cable salad bowl 150
 P Grape & Cable large covered compote 425, M Grape & Cable water pitcher 150
 P Grape & Cable 6pc Tankard water set 775, IB Grape & Cable 8.5" bowl 650
 IB Grape & Cable centerpiece bowl 850, IG Grape & cable centerpiece bowl 500
 IG Peacock & Urn master IC 800, M Peacock & Urn master IC (flat & super) 475
 IG Peacock & Urn small ice creams 230, 210, 185 X 2, B Poppy Show plate 425
 G Multi Fruits & Flowers pitcher 5250, M Trout & Fly bowl 250
 A Multi Fruits & Flowers 5pc punch set 1050, G Seacoast pin tray 475
 A Many Stars 9.5" IC bowl (super radium) 575, P Wildflower compote 2550
 A Blackberry Wreath 10" IC bowl (super radium) 190, G Deep Grape compote 950
 G Poppy compote 650, A Hanging Cherries compote 1300, A Courthouse bowl 425
 G Buzz Saw cruet w. stopper 400, G Double Star water pitcher 400
 M Inverted Strawberry ladies cuspidor 425, B Kittens toothpicks 225 & 200
 M Kittens pieces 60-125, Corn Vases: P-275, M-575, Lime Green 325
 M Strawberry Scroll water pitcher 1050, P Butterfly & Tulip square bowl 1000
 M Brooklyn Bridge bowl 250, B Elk bowl (1911 Atlantic City) 325
 IB Acorn Burrs 8pc punch set 3750, A Nesting Swan bowl 225
 P Tree Trunk Std vase 40, P Chatelaine pitcher (base chip) 750, tumbler 200
 B Blueberry water pitcher 650, tumbler 75, M Blueberry 7pc water set 275
 dark IB Peacock @ Fountain pitcher 2500!!, G Peacock @ Fountain pitcher 1750
 Peacock @ fountain tumblers, IB 250, G 450, W 130, A Perfection tumbler 425
 P Wishbone tumbler 180, G Blackberry Block tumbler 225, P Beaded Shell 60
 EB Grape Arbor tumbler (super) 625, IB 150, W Heavy Iris 140, W wisteria 290
 W Orange Tree ftd tumbler 110, M Circle Scroll 250, B Fentonia Fruits 675
 M Misbo Cherries tumbler 310, M Harvest Flower 95, M File tumbler 100

After the auction, Louie Bradford was seen with a wide smile on his face.
 There were many new record prices set and very few pieces went to mail bids.

** CARNIVAL GLASS FOR SALE ** CARNIVAL GLASS FOR SALE ** CARNIVAL GLASS FOR SALE **

AL & WENDY RETTKE, 14226 EAST 143RD LANE, BURNSVILLE, MN 55337 phone: 612-432-7489
 IG BUSHEL BASKET, N, ROUND 195 W LEAF CHAIN 9.25" FLAT PLATE, SUPER IRID. 145
 IG BUSHEL BASKET, N, 8-SIDED, SCARCE 235 IB GRAPE & CABLE POWDER JAR BOTTOM, OR BUY TOP SAME \$ 120
 P BLOSSOMTIME COMPOTE, SCARCE 110 IB POPPY PICKLE DISH, GROUND BASE 135
 G BUTTERFLY & BERRY TUMBLER, GROUND SPOT ON BASE 17 P ACORN BURRS BUTTER BASE, OR BUY TOP SAME \$ 40

CHARLOTTE TWEDDELL, 4908 DARTON LANE, LOUISVILLE, KY 40216 phone: 502-447-1670

B THISTLE BANANA BOAT, SM CHIP ON COLLAR BASE 200 B BUTTERFLY & BERRY TUMBLER 55
 A BOUTONNIERE COMPOTE 85 AMB PINEAPPLE 7" BOWL, ENGLISH 65
 B PERSIAN MEDALLION COMPOTE 45

DAVID N. DEEH, 902 EAST WALNUT AVE., BURBANK, CA 91501 phone: 818-845-4530

RED HOLLY HAT (BON-BON SHAPE) 190 B HORSES HEADS RUFFLED BOWL, NICE 115
 G CONCORD BOWL, OUTSTANDING IRID 150 G DRAGON & LOTUS BOWL, NICE COLOR 75
 H STRAWBERRY PLATE, PLAIN BACK 80

VALMER CROSS, PRATTSVILLE, NY 12468 phone: 607-588-6698

M STORK VASE 35 H HAT, 2" TALL 12.50
 G COIN DOT 6.25" BOWL 20 M CHECKERBOARD 8" PLATE 25
 G N RAYS 5" BOWL 17.50 H WINDMILL 8" PLATE 18
 PM VINEYARD TUMBLER 12 A GRAPE & CABLE SPOONER, N 50
 A GRAPE & CABLE TUMBLER 30 H FASHION 7PC WATER SET 275

EVA BACKER, 12 SHERWOOD ROAD, M.HARTFORD, CN phone: 203-233-3761 10AM-1PM AND AFTER 6PM

M HOBSTAR SPOONER 55 CLR SHRINERS CHAMPAGNE, 1909 PITTSBURG, TOBACCO LEAVES 90
 A SIX PETALS BOWL, SUPER 55 H STRAWBERRY PLATE 70
 M 474 PUNCH CUPS, HAVE 4, EACH 20 H PERCOCK TAIL VARIET COMPOTE 65
 N ORANGE TREE POWDER JAR 55 M LBJ HAT 30
 M STAR MEDALLION GOBLET 35 H FASHION 8PC WATER SET 200

LARRY KEIG, 301 UNION STREET, FAYETTE, IA 52142 phone: 319-425-4467 KEEP TRYING

M BLACKBERRY WREATH 6" BOWL 25 M LEAF CHAIN/HORSE CHESTNUT 7" RUFFLED BOWL 25
 N VINTAGE 8.5" RUFFLED BOWL 30 B CHERRY CHAIN 6" RUFFLED BOWL 30
 M IMPERIAL GRAPE WINE DECANTER, REPAIRED, NO STOPPER 15 A FOOTED SHELL MINIATURE DISH 32.50

DICK HATSCHER, BOX 261 WALNUT HILL ROAD, BETHEL, CT 06801 phone: 203-743-1468

M CRAB CLAW CRUETS WITH STOPPERS, RARE, 195 EACH OR 375BOTH M WREATH OF ROSES WHIMSEY, SEE HEACOCK BOOK P126 295
M CRUCIFIX CANDLESTICKS, FAIR 375 W FLORAL & GRAPE WATER PITCHER 195
W HEARTS & FLOWERS PLATE, SUPER RARE 695 M ORANGE TREE PLATE 95
W LEAF CHAIN PLATE 95 AD VINTAGE 9" BOWL, CANDY RIBBON EDGE, TINY ROUGH SPOT 395
AD CARNIVAL HOLLY PLATE, TINY SMOOTHED SPOT ON ONE POINT, FIRST ONE KNOWN!! \$3000.00

BARBARA NELSON, RFD #4 - BOX 155, LACONIA, NH 03426 phone: 603-293-7246

CLM LEAF CHAIN 9" PLATE, LT GOLDEN IRID 80 M PERSIAN GARDEN 6" PLATE, SUPER 45
AMB CORINTH BANANA DISH 45 B SAILBOATS 6" BOWL 40
A GRAPE & CABLE 9" PLATE, B/W EXT 60 M FINECUT & ROSES ROSEBOWL, TINY NICKS ON TOES 35
PO RAINDROPS 9" BOWL, 3-IN-1 C.R.E., SUPER 65 A ROSE WREATH 80-BON, B/W EXT, M, BLUE IRID, 175
EB NORTHOODS POPPY PICKLE DISH 60 M STRAWBERRY STIPPLED 8.5" BOWL, PIE CRUST EDGE, SUPER 35

CHUCK BULLARD, 14915 DARK STAR COURT, MORGAN HILL, CA 95037 phone: 408-779-1452

18 FINECUT & ROSES ROSEBOWL, FEET ARE MINT 275 G GREEK KEY TUMBLER 80
P DIAMOND & SUNBURST WINE 55 M LITTLE STARS 7" RUFFLED BOWL 75
P BUTTERFLY BUSH COMPOTE 110 M BIRD WITH GRAPES WALL VASE 75
P KINGFISHER BOWL 110 G DIAMONDS TUMBLER 45
16 PREMIUM CANDLESTICK, ONE ONLY 40 16 GRAPE & CABLE POWDER JAR BOTTOM 55

TED SHELLEY, 304A HILLCREST DRIVE, NEW CUMBERLAND, PA 17070 phone: 717-938-6417

M TOWN PUMP 1000 P GRAPE & CABLE 7PC TANKARD WATER SET 850
M SINGING BIRDS SPOONER 50 P SINGING BIRDS 7PC WATER SET 700
P GRAPE DELIGHT ROSEBOWL 65 P WREATHED CHERRY MASTER BERRY BOWL 100
P GRAPE & CABLE 7PC BERRY SET 225 G GRAPE & CABLE 10" BOWL, M 60
B GRAPE & CABLE SPATULA FOOTED BOWL 30 P PEACOCK & URN 7PC ICE CREAM SET, M 500

DICK WETHERBEE, 847 STAFFORD ST., ROCHESTER, MA 01542 phone: 617-892-4420

B APRIL SHOWERS/PEACOCK TAIL 11" VASE, SUPER 35 M WEEPING CHERRIES/WESTERN DAISY 8.5" DOME FTD BOWL 43
G HOLLY SPRIG 7" 2-HANDLED CARD TRAY, RARE MLS86 SHAPE 82 PD CAROLINA 8.5" HANDGRIP BOWL, GORGEOUS & BEAUTIFUL 85
M STAR MEDALLION MILK PITCHER, REAL DEEP COLOR 35 P FENTON HOLLY 9" RUFFLED BOWL, REDISH HIGHLIGHTS 43
W GRAPE DELIGHT 6 FTD NUTBOWL, CRACK 18 M GRAPE & GOTHIC ARCHES 5" BERRY BOWLS, 3 @ 15 OR ALL 42
AMB RIPPLE 9" FLARED TOP VASE, BRILLIANT 35 LT B VINTAGE GRAPE FERNERY, PALE BLUE, VERY DIFFERENT 40

MRS. CAROL MOORE, 6168 ROBERTS CREEK ROAD, ROSEBURG, OR 97470 phone: 503-679-7107 AFTER 7PM OUR TIME
SASE FOR LIST OF OVER 100 DIFFERENT VASES, MANY RARE TO SCARCE ALL THE FOLLOWING VASES ARE IN EXCELLENT CONDITION

P HOBSTAR & FEATHER 13" VASE, RARE & PERFECT 4500 G ZIPPERED HEART (QUEENS) 9" VASE, RARE 1975
M IDYLE 7" VASE, RARE 975 M HAND VASES, 5", BOTH LEFT & RIGHT HAND, JAIN 550
M EGYPTAIN BAND 6" VASE 275 M WOODLANDS 5" VASE, SCARCE 150
P VINTAGE EPERNE, 5" 125 P JESTERS CAP, M, 9" VASE, SCARCE 75

MARY WELCH, 213 ALEXANDER, SCOTIA, NY 12302 phone: 518-393-7748

M GOLDEN GRAPES ROSEBOWL 49 G VINTAGE 7.5" FLAT PLATE 75
A SPRINGTIME CREAMER 90 M OCTAGON WINES, HAVE 4, EACH 24
M VINTAGE 6 FTD NUT BOWL, FEET PERFECT 49 M WREATH OF ROSES ROSE BOWL 29
SEND 2 STAMPS FOR 350 PIECE LIST OF CARNIVAL FOR SALE

D.M. EVANS, 617 EAST 18TH, SOUTH SOUTX CITY, NE 68776 phone: 402-494-5269

A HEAVY IRIS TUMBLER 35 G SINGING BIRD TUMBLER, M 35
M LUSTRE ROSE TUMBLER, GOOD COLOR 20 M TIGER LILY TUMBLER 25
M STORK & RUSHES TUMBLER 25 A GRAPE & CABLE TUMBLER 30
B ORANGE TREE FOOTED TUMBLER 30 M BANDED GRAPE TUMBLER 20
AMB LARGE FOOTED SHELL DISH 30 B BUTTERFLY & BERRY TUMBLER, SOME WEAR ON TOP EDGE 30

JACKIE TYLER, BOX 647, BALDWIN, WI 54002 phone: 715-684-2397

P VICTORIAN BOWL, VERY GOOD 100 P RASPBERRY SPC WATERSET, SUPER COLOR, BASE WEAR 400
M MIKADO COMPOTE, GOOD 75 G BLACKBERRY WREATH BOWL, EXC MLS86 RADION 75
B VINTAGE 7.5" PLATE, VERY GOOD IRID 75 B BUSHEL BASKET, M, NICE COLOR 65
G SCOTCH THISTLE COMPOTE, RIBBON CANDY EDGE 40 PD SKI STAR 10.5" BOWL, EXCELLENT 85
AD DRAPERY ROSEBOWL, SUPER OPAL & COLOR, CRACK IN BASE, IF YOU COULD SEE IT, YOU'D BUY IT!! \$75

MARTY SCHOETTLE, BOX 188 - RD #3, SEMALL, NJ 08080 phone: 609-589-4325

M LITTLE FLOWERS SMALL BERRY BOWLS, HAVE 3, EACH 23 M SAILBOATS/ORANGE TREE SMALL BERRY BOWL 33
M WREATHED CHERRIES SMALL BERRY BOWL 32 A WREATHED CHERRIES SMALL BERRY BOWL, ALMOST RED 70
PD WREATHED CHERRIES SMALL BERRY BOWL 90 M LONG THUMBPRINTS SUGAR & CREAMER 45
A INVERTED STRAWBERRY TUMBLERS, HAVE 3, EACH 195 A ORIENTAL POPPY TUMBLERS, HAVE 2, EACH 40
M LATTICE & GRAPE TUMBLERS, HAVE 3, EACH 15 B BUTTERFLY & BERRY TUMBLER 40

RAY HITCHCOCK, RR #1 - BOX 301, WINTERSET, IA 50273 phone: 515-462-2074

M	HEARTS & FLOWERS COMPOTE	85	M	GRAPE & CABLE SPOONER, DARK COLOR	40
IB	CONCAVE DIAMONDS TUMBLERS, ALL 6 FOR	125	IB	CONCAVE DIAMONDS TUMBLE-UP, SUPER	285
M	FEATHER STITCH BOWL	45	M	PEACOCK & URN COMPOTE, SUPER & DARK	45
P	VINEYARD TUMBLER, SUPER COLOR	45	IB	HEARTS & FLOWERS BOWL, POINT DAMAGE REPAIRED	40
RED	OPENEDGE BASKET, CRACK IN BOTTOM	30	M	TOWN PUMP, CRACKED, NICE SHELF PIECE	85

JOHN MIKKONEN, RR #1 - BOX 474F, SHAKOPEE, MN 55379 phone: 612-445-6098

G	OCTAGON TUMBLER, RARE	300	P	WISHBONE & SPADES 6" PLATE, SUPER	125
M	DIAMONDS 5PC WATER SET	340	M	BUTTERFLY & BERRY 6PC BERRY SET	240
M	IMPERIAL GRAPE 6PC BERRY SET	110	M	ORANGE TREE MUG, NICE	30

TOM MORDINI, 36 NORTH MERNITZ AVE., FREEPORT, IL 61032 phone: 815-235-4407

AMB	DRAGON & LOTUS RUFFLED BOWL	160	B	GRAPE & CABLE STIPPLED PUNCH CUPS, EACH	50
PO	FOUR FLOWERS 6.5" PLATE	85	B	ACORN RUFFLED BOWL, FENTON	55
G	DAISY SQUARES GOBLET, TINY FLAKE	180	A	PERSIAN MEDALLION COMPOTE	95
B	ORANGE TREE 9" FLAT PLATE	185	M	PEACOCK & URN 9" FLAT PLATE	185
B	STAG & HOLLY LARGE 10" BOWL	165	G	DRAGON & STRAWBERRY BOWL	400

NEW BULLETIN SECRETARY:

MARGE MILLER
7605 N.W. EASTSIDE DRIVE
KANSAS CITY, MO 64152

It's been great, but now it will be better!

Al Rettke

** CARNIVAL GLASS WANTED ** CARNIVAL GLASS WANTED ** CARNIVAL GLASS WANTED **

B.R. PRELLWITZ, 3204 18TH AVE. SOUTH, GREAT FALLS, MT 59405 phone: 406-727-4235
G WREATH OF ROSES PUNCH CUPS, GRAPE INTERIOR

P A.C. DICKEY, 144 CHANDLER STREET, VACAVILLE, CA 95688 phone: 707-448-9386
P DIAMOND LACE TUMBLERS, NEED 4

CHUCK BULLARD, 14915 DARK STAR COURT, MORGAN HILL, CA 95037 phone: 408-779-1452
P LID FOR INVERTED STRAWBERRY COVERED SUGAR
M MULTI FRUITS & FLOWERS PUNCH CUP
M DOUBLE STAR TUMBLERS
W FRUITS & FLOWERS BON-BON
P FASHION TUMBLER - WILL TRADE WHITE MISTERIA
P 4-7-4 PUNCH BOWL
RED PLAID BOWL
ANY HOBSTAR & FEATHER EXCEPT GIANT ROSEBOWL OR PUNCH CUPS

BARBARA NELSON, RFD #4 - BOX 155, LACONIA, NH 03426 phone: 603-293-7246
G THREE FRUITS STIPPLED 9" PLATE
G,M HEARTS & FLOWERS BOWLS
P CONSTELLATION COMPOTE
G FINECUT & ROSES ROSEBOWL WITH PERFECT TOES

TED SHEIBLEY, 304A HILLCREST DRIVE, NEW CUMBERLAND, PA 17070 phone: 717-938-6417
M SPRINGTIME SUGAR LID
M ORANGE TREE POWDER JAR LID
G GRAPE & CABLE POWDER JAR LID
(OR SELL BOTTOMS)

LARRY KEIG, 301 UNION STREET, FAYETTE, IA 52142 phone: 319-425-4467 KEEP TRYING
ANY GEORGIA BELLE PIECES
G LID FOR IMPERIAL GRAPE WINE DECANTER
ANY BASKETS, BOWLS OR PLATES WITH IOWA TOWN NAMES STENCILED ON THEM
P LID FOR VINTAGE (DUGAN) POWDER JAR
G LID FOR INVERTED STRAWBERRY POWDER JAR

AL & WENDY RETTKE, 14226 EAST 143RD LANE, BURNSVILLE, MN 55337 phone: 612-432-7489
EB, G PEACOCK & URN MASTER ICE CREAM BOWLS, NORTHWOOD
IG, IB GRAPE & CABLE BOWLS, PLATES OR POWDER JAR LIDS
IB, IG, W HEARTS & FLOWERS PLATES

OLD CARNIVAL GLASS LIBRARY

CARNIVAL GLASS RARITIES-A color line approach. Lists the top 10 rarities in each color-plus complete rarities price guide-40 pages of black and white pictures-special section on whimsys-\$8.50 pp. Also THE SHAPE OF THINGS IN CARNIVAL GLASS, 110 pages, 200 items in full color-\$9.95. Don Moore, 2101 Shoreline Drive, Apt 462, Alameda, CA. 94501.

CARNIVAL GLASS SERIES-by Marion T. Hartung. Each book has 100 different patterns-10 books in the series, books 1,2 and 3-\$3.00 ea, books 4 thru 10-\$3.50 ea. 1981-82 price guide-\$5.00 pp, Northwood Pattern Glass-clear, colored, custard and carnival-\$9.95, plus .50 postage. Order from Ione Henshaw, 903 East 6th Ave., Emporia, KS 66801.

CARNIVAL IN LIGHTS-A full color book on Carnival Lighting, including Gone With The Wind Lamps, Candle Lamps and shades-price guide included-\$11.95 plus postage, Helen Greguire, 103 Trimer Road, Hilton, NY. 14468.

CARNIVAL GLASS TUMBLERS-Author Richard Owens-order from Don Brown, Wallace-Homestead Book Company, 1912 Grand Ave., Des Moines, IA. 50303.

THE STANDARD ENCYCLOPEDIA OF CARNIVAL GLASS REVISED EDITION NOW AVAILABLE, many new photographs and expanded European carnival section-\$24.95 (with new price guide), NEW PRICE GUIDE includes eight color columns, size 8x11 - \$4.95, IMPERIAL CARNIVAL GLASS-THE EARLY YEARS-\$9.95, FENTON CARNIVAL GLASS-THE EARLY YEARS-\$9.95, MILLERSBURG THE QUEEN OF CARNIVAL GLASS-\$8.95, NORTHWOOD, KING OF CARNIVAL GLASS-\$9.95, Bill Edwards Author, Collectors Books, Paducah, KY.

CARNIVAL GLASS--by Ray Notley, Shires Album # 104. ISBN 0 85263 637. Price is only \$3.55 including postage. Send to 7 Hills Books, 519 W. 3rd. Street, Cincinnati, OH. 45202.

CARNIVAL GLASS WORLDWIDE--by M. Quinton-Baxandale. 200 Colour Photographs * Pattern Name Index * Exclusive Research * Clubs Worldwide Listed * Order from: CARNIVALIA PUBLICATIONS, PO Box 1, LOSTWITHIEL, CORNWALL, L22 OYZ, ENGLAND US \$13.50 (surface mail) US \$15.00 (airmail) Payment with order please, by International Cheque or Money Order.

FENTON GLASS-THE FIRST 25 YEARS-144 pages, 72 in full color, more than 400 items pictured in Fenton's carnival and iridescent "stretch" colors, rare catalogue reprints (some in color), a complete history of the factory's early years, from 1907 to 1932, \$15.95 for softcover edition with price guide, \$20.00 for limited edition hardbounds. Order from the author, William Heacock, P.O. Box 27037, Columbus, OH. 43227.

"CARNIVAL GLASS - An Introduction to the Iridescent Pressed Glass Grandma had on her sideboard", Angela Hallam's 52 page fully illustrated paperback is NOW AVAILABLE IN THE U.S. for only \$2.95 ppd. Nancy Johnson, The Library, P.O. Box 37, Des Moines, IA 50301.

CARNIVAL GLASS AUCTION PRICE REPORT-1984 Edition. This edition has approximately 4000 entries from major auctions in 1983. Single copy price is still \$8.00 US postpaid (for overseas delivery, add \$1.00). Order from: Al & Wendy Rettke, 14226 E. 143rd Lane, Burnsville, MN 55337 The 1985 Edition will not be published until summer/fall '85.

HOACGA PATTERN NOTEBOOK, get the complete COLOR reference including the 1985 insert on the first half of rosebowl for only \$18.00 plus \$4.00 postage. 1985 insert only is \$4.00 plus \$1.00 postage. Order them from the Secretary (address is inside front cover). Membership required to order these.

OTHER REFERENCE MATERIAL

"Encore by Dorothy" books 1 and 2. A series of books on new reproduced Carnival Glass, giving information on the patterns and colors that are being reproduced. Price for each book is \$7.70 postpaid. Be sure to state which book you want. Dorothy Taylor, Box 11734, Kansas City, MO, 64138.

"CARNIVAL GLASS" educational brochure with color photographs. Available to interested collectors or dealers who wish to better describe to and inform the public about our glass. Free of charge from the American Carnival Glass Association. Contact Ruth Schinestuhl, P.O. Box 694, Absecon, NJ 08201.

APPLICATION FOR MEMBERSHIP

=====

THE HEART OF AMERICA CARNIVAL GLASS ASSOCIATION, INC.

=====

DATE _____

NAME _____

SPOUSE _____

ADDRESS _____

CITY _____ STATE _____

ZIP CODE _____ TELEPHONE _____

RECOMMENDED BY _____

Do you want your name in the directory? YES _____ NO _____

DUES ARE \$20.00 U.S. PER YEAR (JUNE to MAY with back-issues on request)

SEND DUES TO: H.O.A.C.G.A.
GLEN FORTNEY, SECRETARY
P.O. BOX 303
BUCKNER, MD 64016

A FEW OF THE BENEFITS OUR CLUB OFFERS:

The ONLY MONTHLY PUBLICATION on just Carnival Glass Collecting, keeping you informed of new discoveries and all of the current events. Members only may advertise, FREE OF CHARGE!!!

An exclusive PATTERN NOTEBOOK with yearly special inserts (ALL inserts are still available)

ANNUAL SOUVENIR AND CONVENTION WITH SOME OF THE GREATEST PEOPLE YOU CAN HOPE TO MEET!!

<<<< JOIN TODAY >>>>