

SEND ALL CORRESPONDENCE TO
BULLETIN SECRETARY:

MARGE MILLER
7605 N. W. EASTSIDE DRIVE
KANSAS CITY, MO 64152

=====
FIRST CLASS MAIL
=====

First Class Mail
U. S. Postage
PAID
Kansas City, Mo.
Permit No. 4352

JULY - 85

NEWSLETTER

IF YOUR LABEL SAYS 6-85,

YOUR DUES ARE DUE

PAY THEM NOW!!!





Heart of America
Carnival Glass
Association Inc.

Membership June to May
\$20.00 Per Couple or Single

Published the 15th
of each month

PRESIDENT

Robert Grissom
7900 Crescent
Raytown, MO 64138
(816) 356-5320

VICE-PRESIDENT

Nadine Paulsen
700 Purdom
Olathe, KS 66061
(913) 782-1313

TREASURER

Karen Engel
35292 Oak View Drive
Brownsville, OR 97327
(503) 466-5989

SECRETARY

Glen Fortney
P. O. Box 303
Buckner, MO 64016

BULLETIN SECRETARY

Marge Miller
7605 N. W. Eastside Drive
Kansas City, MO 64152
(816) 741-4635

All monetary figures quoted are in U. S. dollars.
Please make checks for dues payable to H.O.A.C.G.A.
and send them to the secretary as listed above.

**** DO NOT SEND TO THE BULLETIN SECRETARY ****

At 2:15 P.M., Sunday, June 23, 1985, President Bob Grissom called the meeting to order. Glen Fortney read the minutes of the last meeting and they were accepted as read. Due to no information, there was no Treasurers' Report.

There was discussion as to the location of the hotel for next years' Convention with many members present voicing their opinions.

President Grissom asked the attending members how they felt about having future monthly meetings at the Raytown City Hall; as it is centrally located, comfortable, and is provided at no cost to the Club. Most members agreed to keep meeting here unless someone would like to meet in someone's home.

There was also discussion as to future programs at the meetings and also the Annual Picnic in September.

With no further business, the meeting was adjourned until 2:00, July 28, 1985, at the Raytown City Hall.

After the meeting was adjourned, President Grissom and Cooley Miller both brought some beautiful glass to share with the members and Glen Fortney gave a program on the many colors and shapes Fenton Art Glass Company incorporated into the open-edged baskets.

Pictured is our Bulletin Secretary Marjorie and her husband Ex-President Cooley Miller.

I still don't have a picture of our President Grissom or our Treasurer Karen Engel.



PICTORIAL PATTERN PARADE

By John & Lucile Britt

INVERTED THISTLE THREE FOOTED BOWL

Last summer, while we were in California at the Charlotte & Gordon Williams' home, we took a picture of this very unusual Cambridge bowl. It was the first one that we had ever seen, although one of these in the nut bowl shape was sold at the Dr. & Mrs. Miller auction at Dayton, Ohio on September 25, 1983. Both pieces were in the green base glass color. The above featured bowl has very nice iridescence and we would consider it as rare and very desirable, as well as being a rare shape for this pattern. Actually, no Inverted Thistle piece of old carnival glass is common or easy to find. An occasional bowl in this pattern will show up and we have seen one large flat collar base chop plate. We featured this chop plate, signed with the Cambridge "NEAR-CUT" trademark, a number of years ago in this "Pictorial Pattern Parade" series. It is still the only one that has ever been reported. Inverted Thistle water sets, table sets and berry sets are also extremely rare. Many of these pieces, but not all, are signed "NEAR-CUT". We thought perhaps that you might enjoy viewing a snapshot of this rare and unusual piece.



EDUCATIONAL TUMBLER SERIES

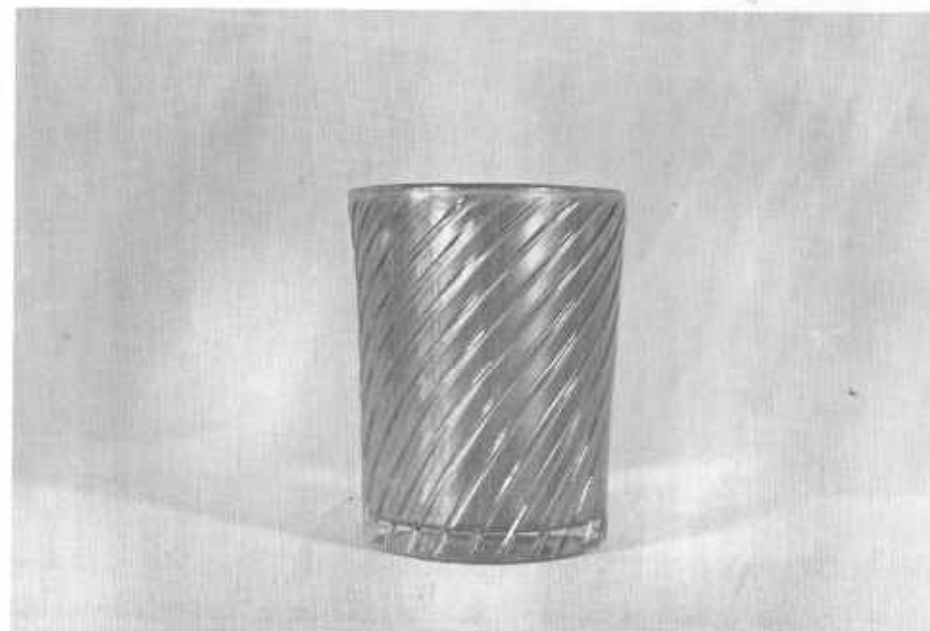
By John & Lucile Britt

THE RIBBED SWIRL TUMBLER

This is a very nice tumbler for being such a simple designed pattern. It is unusual in that the threads or raised ribs extend out to and touch both the base and rim of the tumbler. They are raised from the surface of the tumbler approximately 1/16 of an inch. These twenty-four swirled threads flow gracefully from a southwest to a northeast position. They remind one somewhat of an old fashioned barber pole. I have seen this tumbler only in marigold and with very good color and iridescence. The bottom of the base is smooth or plain. It is slightly shorter than most tumblers, standing at 3 3/4 inches high.

I have seen only a very few of these "Ribbed Swirl" tumblers. Actually they are quite rare. The one that we obtained for our collection is the exact one that is sketched and described in Hartung Book 6 - Page 49. The maker of the "Ribbed Swirl" tumbler is unknown at the present time, but we consider it a super addition to any tumbler collection. You are going to find that one will be rather hard to locate, however.

"Ribbed Swirl" marks our 90th Edition in this series. Next month we will describe and illustrate another fine tumbler in which we hope you will find most interesting.



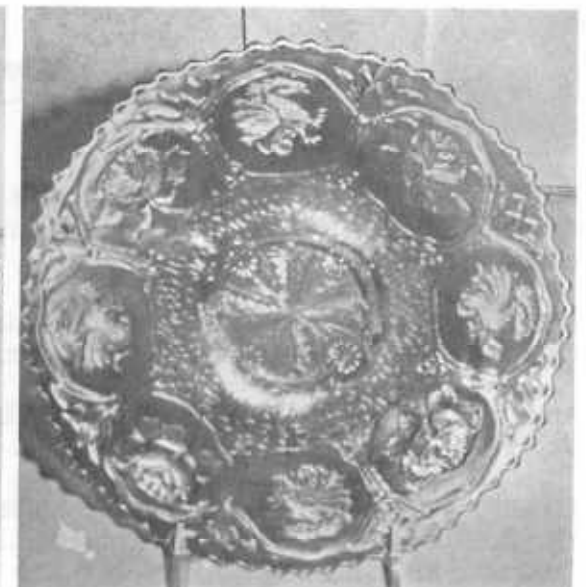
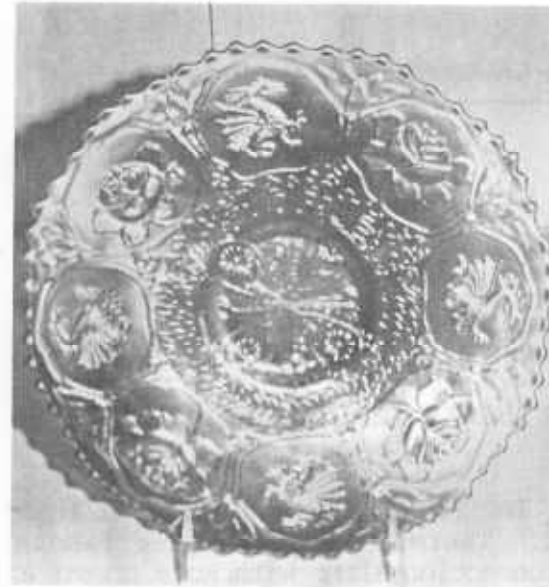
Carnival Cameos

BY DONALD MOORE

MOONPRINT

I'm sure it was never intended for these vases and the two-piece fruit bowl to be used together as a set but it makes an interesting picture. Some ten years ago we owned a pair of Moonprint vases. When we recently bought the pair shown here, we found out it was the same set we had previously owned. It is the only set I have seen. The same is true of the fruit bowl and base. The base doubles as a compote and I have seen several of those.

This pattern was made by the Sowerby Glass Works, Durham, England. It was made in a wide range of shapes including pitchers, bowls, candlesticks, covered butter, stemmed sugar and creamer, cookie jar, plate, cake stand and covered cheese dish. Marigold is the only color known. While some of these pieces, like those shown here, are quite rare, they do not command the big buck.



RARIETIES AND SELDOM SEEN

By Ivan L. & Betty J. Mitchell

Marigold and Blue Dragon and Lotus Plates - Fenton

Let me say before we get started that these two plates are hard to come by and they are expensive.

They are both 9 1/2" in diameter and they lay very flat. Marigold and blue are the only colors in this collar based plate type. There are 1-3 of the spatula footed plates and I believe they are ice green opal. (I am not sure of this).

Both of the above pictured plates are priced in the ball park of \$700.00 to \$900.00 and are very rare.

The common colors in bowls are easy to find like purple, green, marigold, etc. with the exception of red, ice green opal, amber aqua opalescent and peach opal, the latter are much harder to come by.

Just why Dragon & Lotus are combined as a pattern I can't imagine, however they must have been a big seller, since the common colors and shapes are easy to find.

These plates are very few in number. I would say there are approximately 6-8 in each color.

*** 1985 CARNIVAL CALENDAR ***

JULY 20, 1985 - 10 A.M., 7605 N.W. Eastside Drive, (Weatherby Lake) Kansas City MO 64152. 50 pieces fine Carnival, excellent iridescence and color.

JULY 28, 1985 - 11 A.M., KCI Holiday Inn, K.C. MO. 150 pieces of Carnival for the intermediate collectors. Some rare and unusual pieces.

ABOVE AUCTIONS CONDUCTED BY GENESES AUCTION SERVICE, George O. McGrew Jr. (913) 262-8822.

AUGUST 8-10 - 12TH ANNUAL CONVENTION, PACIFIC NW CARNIVAL GLASS CLUB at the Holiday Inn HoliDome in Eugene, OR. There will be another famous "Salmon BBQ Picnic" to kick off the convention along with lots of other exciting events. For more information contact Karen Engel, 35292 Oak View Drive, Brownsville, 97327 - (503) 466-5989 or work (503) 466-5191.

SEPTEMBER 6-8 - 3RD ANNUAL CONVENTION, NEW ENGLAND CARNIVAL GLASS ASSOCIATION, Quality Inn, Chicopee, Mass. Sunday Auction. For more information contact Howard Robinson, Convention Chairman, (413) 536-4319.

OCTOBER 11-13 - 2ND ANNUAL CONVENTION, CANADIAN CARNIVAL GLASS CLUB. George Loescher, Banquet Speaker on Saturday, Auction Sunday, I.D. Clinic & more, Conestoga Inn, Kitchener, Ontario. For information contact: Janet Knechtel, P.O. Box 3023, Kitchener, Ontario N2G 4R5.

OCTOBER 18-20 - CONVENTION of THE AIR CAPITOL CARNIVAL GLASS CLUB Airport Sheraton Inn, 5500 W. Kellogg, Wichita, KS (I-235 & US 54 West). Contact Don Kime, 1202 West 4th, Haysville, KS 67060.



JULY

CALENDAR

JULY						
	1	2	3	4	5	6
7	8	9	10	11	12	13
14	15	16	17	18	19	20
21	22	23	24	25	26	27
28	29	30	31			

Dear Marge:

I am writing on behalf of the Pacific Northwest Carnival Glass Club which will be holding it's annual convention August 8-10, 1985, at the Holiday Inn, 225 Coburg Road, Eugene, Oregon.

It is going to be another good convention as we have lots of activities planned for our members & visitors attending the convention. To start off the convention we will be having our 3rd Salmon BBQ-Potluck Picnic at a nearby park. Everyone is welcome to attend and fresh BBQ'd Salmon from the Pacific Northwest will be just one of the highlights of the picnic as we've got some excellent cooks in our club.

Friday morning will be our business meeting and election of officers followed by a buffet luncheon featuring DON MOORE & JOHN WOODY in a combined program featuring glass that Don has purchased at Woody auctions. I am very excited about this and feel that it will be a program that no one will want to miss.

Friday evening in the holidome we will be having our "CARNIVAL GLASS COSTUME PARTY" which will complete an exciting Friday. Members are asked to wear their carnival glass jewelry, come in a costume from the 30's, 40's, etc., come in a parade of patterns, use your imagination, get into the Carnival Spirit, win a prize and we'll have a great time.

Saturday morning we are pleased to present a 200+ piece Carnival Glass Auction featuring John Woody as Auctioneer. One of the highlights at the auction will be the "ABSENTEE DRAGON" plate. There is something for everyone, novice to advanced collector. Red pieces, Pastel items, Plates, Australian pieces just to mention a few. For a complete listing contact John Woody Auction Company, Douglas, Kansas. Our auction will be filmed as Bob Rau, Host of "The Collectors" Television Show which is viewed in Oregon & Washington on Public Broadcast System is interested in putting together a program on auctions. I feel that this will be a wonderful way for the Pacific Northwest to promote our wonderful hobby—Carnival Glass Collecting.

Saturday evening will be our banquet where we will have yet another exciting program with Marie Capps speaking about "Rarities in Pastel Carnival Glass".

Anyone wishing to attend the convention only need contact me and I will be happy to help them with the details.

Sincerely,
Karen Engel
VP/Convention Chmn.

AIR CAPITAL CARNIVAL GLASS CLUB

Our club members were treated to a trip to Baldwin City, Kansas, where our hosts for the June meeting were Anna Belle and Charles Vaughn. What a treat it was to be at their home and see their glass and carvings.

We all enjoyed a covered dish meal at noon and what a nice time we had while visiting with them. Some of our Kansas City members were also present for this meeting. We needed no educational program for this meeting. Just to look at the lovely glass was an education in itself.

I think our club has had the privilege of being in more homes than any other probably. We will spend a half day getting someplace if we are invited and we have had such wonderful times with all of you. We would like to thank all of you who have invited us into your homes because we have seen such a cross section of collecting in this way.

The convention plans are progressing for our October convention and we want all of you who can to be with us in October. Lots more information will be forthcoming so be watching your mailboxes and reading your newsletters for this information.

Donald E. Kime
Secretary

Dear Mr. Rettke,

Firstly, as a new member of your Association, may I express my pleasure with the Bulletin. I have found them extremely informative and interesting - just what I need to assist me in my collecting. Keep up the good work!

By the time you receive this letter the Association's 13th Annual Convention will be over. I trust that it will have been a very successful one and that all attending members had a wonderful time.

I hope that one day I may have the opportunity to attend one of the Association's Conventions.

Thank you for your assistance with my address correction.

Yours sincerely,
Alan Ballash

I C G A CONVENTION

We loved the Carnival Convention held at Cedar Rapids, Iowa, June 19, 20, 21, 22. It took us a day and a half to get there. The Holiday Inn Motel personnel were all so very nice and helpful - the foods delicious. The weather great except for a storm during Banquet evening which we all ignored as we were held spellbound by Don Moore's fascinating talk. He and Connie had brought some of their fabulous Carnival about 2000 miles from California. Don would explain each piece so carefully on color, variety and pattern, he interspersed his witty, humorous jokes along and kept us all full of smiles. We had heard before about his wonderful talks on occasions we had to miss - still we never dreamed we could enjoy hearing him as we did for over an hour. If he had started over again I feel not a person would have left - I'm sure we wouldn't. He truly is a talented speaker and their Carnival defies description so why try to tell anyone not seeing it of the exceptional iridescence, the shapes and the colors brighter than a rainbow.

The whole convention was great. The Bob Lovells and their many helpers can be very proud of themselves. The Don Chamberlains had a water pitcher room with probably at least 150 beautiful pitchers - most had matching tumblers - all lined up like soldiers in a row. Dr. Allen Jones of Bristol, VA., brought 55, I believe from his collection. It was just wonderful to see a display such as this and probably never again will it be duplicated.

The room displays this year were really exceptionally nice and numbered 57 - we believe the most ever for a convention. We do appreciate everyone doing this as it does take much time and effort. The theme ideas our members think up are astounding from Corn Cribs, Corrals, Mrs. Peacock with a nest of little ones - to a lovely White Carnival display with snowy ice hanging here and there - it won firstplace too. So many cleverly done - wish space allowed each to be mentioned.

A "Show and Tell" session was held too and we all gained knowledge from it - the Auction went well - such a lovely array of plates to find new homes. We believe the Peter Rabbit hopped away with the biggest price of all.

It was a 1,473 mile trip for us. We saw many friends and enjoyed it thoroughly. We hope to go to Elkhart, IN., for ACGA in July.

Grace and Byron Rinehart,
Charleston, W. VA

Dear Marge Miller:

You have taken on a demanding job as our Bulletin Secretary and I send you my good wishes. Our publication is the most important, information wise, in Carnival Glass collecting today.

I want to tell you of a recent "find"...a Green Northwood "Peacock at Urn" Master Ice Cream Bowl, mint, with marvelous gold iridescence and color. It was at an outdoor flea market held each Sunday here in Manhattan that I came upon a young man who had a blanket spread out on the cement. Among a few Art Deco items he had a pair of blue Peacock at Urn compotes, they were lovely and mint so I paid him the modest sum he asked without any haggling. Got to talking to him and he said "I thought nobody here in New York City buys Carnival Glass." I laughed and said "they don't, but I do." "Well," he said, "I have three other pieces at home and I'll bring them next Sunday." His description of a large green bowl marked Northwood, he emphasized, with a peacock on it had me really miserable with hopeful anticipation all week. You can imagine how early I was at that market the next Sunday and there it was with a little green Millersburg Cosmos plate and a green Blackberry Bramble compote to either side. It took a lot of steadying of nerves to calmly examine them, all were super mint! I asked a price for all three, I paid him his \$110 without question and left feeling not a little like a thief.

Thank you Marge and good luck.

Sincerely,
James W. Moore

"CORRECTION"

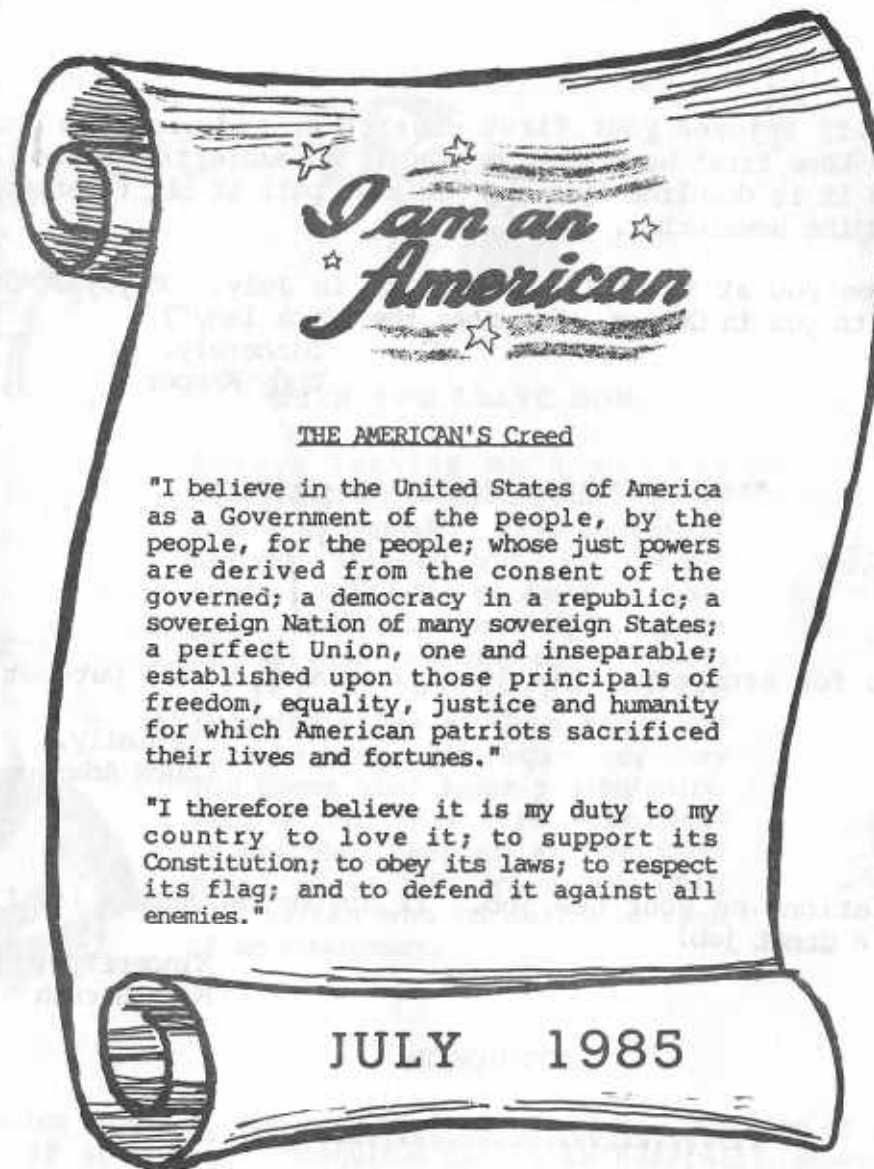
In last month's newsletter it was incorrectly stated the cost of the notebook inserts was \$3.50. The cost is \$4.00 plus mailing.

DECEASED

Lorlee Salyer passed away several weeks after our Convention. I just heard of this and our condolences go to her daughter, Marie Capps.

Cooley and I first met Lorlee at Ken Osbon and she especially liked Green Carnival.

She was a lovely lady.



Just received a note from Bea Crouch of Centerville, Iowa, that her husband, Zera, passed away very suddenly on June 25, 1985, in their back yard. Our deepest sympathy to you, Bea, and may God be with you.

Dear Marge:

We especially enjoyed your first newsletter and wish you continued success. I know first hand what pressure a newsletter editor can be under when it is deadline time and you must pull it all together. Best wishes with the newsletter.

Hope to see you at the NCCC convention in July. Enjoyed the last meetings with you in Oregon. Remember the "duck lady"?

Sincerely,
Judy Kasper

Hi Marge,

Thank you for accepting this job. I know you will put out a fine Bulletin.

Cordially,
Chuck Adams

Dear Marge,

Congratulations on your new job. If anyone can handle it, I am sure you'll do a great job!

Sincerely,
Mary Herren

Dear Marge,

Can't understand how anyone could make a disparaging remark to you about the bulletin. It appears that we are fortunate to have another professional to continue in the HOACGA tradition of excellence. Thought it was great. Keep up the good work.

Love in collecting,
Wes and Betty Strain



WHEN YOU LEAVE HOME

Before leaving on a summer vacation, try to make your home as secure as possible. Have newspaper delivery stopped while you are out of town. Ask the postman to hold your mail. Leave a light on, or better yet, set one on a timer. Check in with the Police Department and let them know you will be gone. If requested, they will check your home periodically. Best of all, have a reliable friend or neighbor keep an eye on your home while you are away. Tell that person who to notify in case of an emergency.



MOSQUITOS

Mosquitos pose a special problem for dog owners. The bite of any one of over 30 species of mosquitos can cause heartworm disease in dogs. Unfortunately, by the time signs of the disease are apparent, heartworm disease is already well advanced and difficult to treat. Preventive medication added to your dog's food is the real answer. But first, a heartworm check should be run on your dog to be certain worms are not already present. Ask your veterinarian to for more information about heartworm. Spread the word to other dog lovers that heartworm disease is a silent killer.

OLD CARNIVAL GLASS LIBRARY

CARNIVAL GLASS RARITIES - A color line approach. Lists the top 10 rarities in each color plus complete rarities price guide - 40 pages of black and white pictures - special section on whimsies - \$8.50 PP. Also THE SHAPE OF THINGS IN CARNIVAL GLASS, 110 pages, 200 items in full color - \$9.95. Don Moore, 2101 Shoreline Drive, Apt 462, Alameda, CA 94501.

CARNIVAL GLASS SERIES - by Marion T. Hartung. Each book has 100 different patterns. 10 books in the series. Books 1, 2 and 3 - \$3 ea. Books 4 thru 10 - \$3.50 ea. 1981-82 price guide - \$5 PP. Northwood Pattern Glass - clear, colored, custard and carnival - \$9.95, Plus .50 Postage. Order from Ione Henshaw, 903 East 6th Ave., Emporia, KS 66801.

CARNIVAL IN LIGHTS - A full color book on Carnival Lighting, including Gone With The Wind Lamps, Candle Lamps and Shades - price guide included - \$11.95 Plus Postage. Helen Greguire, 103 Trimer Road, Hilton, NY 14468.

CARNIVAL GLASS TUMBLERS - Author Richard Owens. Order from Don Brown, Wallace-Homestead Book Company, 1912 Grand Ave., Des Moines, IA 50303.

IMPERIAL CARNIVAL GLASS - THE EARLY YEARS - \$9.95. Price guide 5th Edition - \$3.95. THE STANDARD ENCYCLOPEDIA OF CARNIVAL GLASS - 650 different full color patterns photographed, 223 page hardbound illustrates and evaluated Dugan, Fenton, Imperial, Millersburg, Northwood, Minor American, English Carnival, and more - \$24.95. NORTHWOOD, KING OF CARNIVAL GLASS - \$9.95. Bill Edwards Author, Collectors Books, Paducah, KY \$1.00 postage. Do not send orders to Bill Edwards.

CARNIVAL GLASS WORLDWIDE - by M. Quinton-Baxandale. 200 Colour Photographs * Pattern Name Index * Exclusive Research * Clubs Worldwide Listed * Order from: CARNIVALIA PUBLICATIONS, P.O. Box 1, LOSTWITHIEL, CORNWALL, L22 OYZ, ENGLAND US \$13.50 (surface mail) US \$15.00 (airmail) Payment with order please, by International Cheque or Money Order.

FENTON GLASS - THE FIRST 25 YEARS - 144 pages, 72 in full color, more than 400 items pictured in Fenton's carnival and iridescent "stretch" colors, rare catalogue reprints (some in color), a complete history of the factory's early years from 1907 to 1932, \$15.95 for softcover edition with price guide, \$20 for limited edition hardbounds. Order from the author, William Heacock, P.O. Box 27037, Columbus, OH 43227.

"CARNIVAL GLASS - An Introduction to the Iridescent Pressed Glass Grandma Had on Her Sideboard", Angela Hallam's 52 page fully illustrated paperback is NOW AVAILABLE IN THE U. S. for only \$2.95 PPD. Nancy Johnson, The Library, P.O. Box 37, Des Moines, IA 50301.

CARNIVAL GLASS AUCTION PRICE REPORT - 1984 Edition. This edition has approximately 4000 entries from major auctions in 1983. Single copy price is still \$8 US Postpaid (for overseas delivery, add \$1). Order from: Al & Wendy Rettke, 14226 E. 143rd Lane, Burnsville, MN 55337. The 1985 Edition will not be published until Summer/Fall '85.

HOACGA PATTERN NOTEBOOK. Get the complete COLOR Reference including the 1985 insert on the first half of rosebowl for only \$18 plus \$4 postage. 1985 insert only is \$4 plus \$1 Postage. Order them from the Secretary (address is inside front cover). Membership required to order these.

CARNIVAL GLASS - by Ray Notley, Shires Album #104. ISBN 0 85263 637. Price is only \$3.55 including Postage. Send to 7 Hills Books, 519 W. 3rd Street, Cincinnati, OH 45202.

OTHER REFERENCE MATERIAL

"Encore by Dorothy" Books 1 and 2. A series of books on new reproduced Carnival Glass, giving information on the patterns and colors that are being reproduced. Price for each book is \$7.70 Postpaid. Be sure to state which book you want. Dorothy Taylor, Box 11734, Kansas City, MO 64138.

"CARNIVAL GLASS" educational brochure with color photographs. Available to interested collectors or dealers who wish to better describe to and inform the public about our glass. Free of charge from the American Carnival Glass Assoc. Contact Ruth Schinestuhl, P.O. Box 694, Absecon, NJ 08201.

POLICY FOR ADVERTISING IN THE H.O.A.C.G.A. BULLETIN

1. ALL ADVERTISEMENTS, ANNOUNCEMENTS, LETTERS OR ANY OTHER ITEM TO BE PRINTED MUST BE RECEIVED BY THE BULLETIN SECRETARY BY THE 1ST OF THE MONTH TO INSURE BEING PUBLISHED IN THAT MONTHS BULLETIN.
2. MEMBER FAMILIES MAY ADVERTISE 10 FOR SALE AND 10 WANT ADS PER MONTH.
3. ONLY OLD CARNIVAL GLASS ITEMS OR H.O.A.C.G.A. SOUVENIRS WILL BE PUBLISHED.
4. DAMAGE OR MANUFACTURING FLAWS SHOULD BE NOTED.
5. ALL FOR SALE ITEMS MUST BE PRICED, NO BID ITEMS WILL BE PUBLISHED.
6. A 5 DAY RETURN PRIVILEGE AT BUYERS EXPENSE PROVIDING IT IS NOT AS ADVERTISED.
7. ALL POSTAGE AND INSURANCE IS EXTRA, TO BE PAID BY BUYER.
8. ALL ADS MUST BE LEGIBLE, OR THEY WILL NOT BE PRINTED.
9. THE H.O.A.C.G.A. DOES NOT ACCEPT RESPONSIBILITY FOR THE ACCURACY OF ANY ADS.

FOR ACCURACY OF DESCRIPTION, THE FOLLOWING COLOR KEY IS RECOMMENDED:

A—AMETHYST	HA—HONEY AMBER	P—PURPLE
AMB—AMBER	IB—ICE BLUE	PRL—PEARL/PASTEL/MILK GLASS
AO—AQUA OPALESCENT	IG—ICE GREEN	PM—PASTEL MARIGOLD
AQUA—LIGHT BLUE—GREEN	IGO—ICE GRN OPALESCENT	PO—PEACH OPALESCENT
B—BLUE	LAV—LAVENDER	R—RED
BO—BLUE OPAL OR BLUE OPAQUE	M—MARIGOLD	RA—AMBERINA
CLM—CLAMBROTH	MMG—MARIGOLD ON MILK GLASS	SM—SMOKEY
EB—ELECTRIC BLUE		VAS—VASELINE
G—GREEN		

NOTE: IF YOU WISH TO DESCRIBE A PIECE AS LIGHT OR DARK, USE THE BODY OF THE AD.

PLEASE USE THE FOLLOWING:

EI—EXCELLENT IRIDESCENCE	GI—GOOD (AVERAGE) IRIDESCENCE
LI—LIGHT IRIDESCENCE	

EXAMPLES

AO EI	GOOD LUCK PLATE, ONE POINT BROKEN & REPAIRED	375
M LI	PEACOCK AT THE FOUNTAIN 7PC WATER SET, PITCHER HAS FLAKE	225
MMG GI	PEACOCK & GRAPE BOWL	360
A GI	WISHBONE TUMBLER, HEAT CHECK, LIGHT AMETHYST	47.50

IT WOULD BE GREATLY APPRECIATED BY EVERYONE IF YOU WOULD USE THESE CODES AS SUGGESTED.



**** CARNIVAL GLASS FOR SALE ****

JUDY KASPER, 2567 LOOMIS DRIVE, SAN JOSE, CA 95121
 PHONE: (408) 224-4349 AFTER 6 PM CALIFORNIA TIME

B EI HOLLY COMPOTE \$100
 M EI GOLDEN WEDDING PINT BOTTLE WITH CAP 15
 P EI WREATHED CHERRY MASTER BERRY 135
 P EI WREATHED CHERRY SAUCE 35
 M EI WREATHED CHERRY SAUCE 35
 (HAVE 2 EACH)

\$100
 90
 225
 55
 75
 M EI ACORN BURR PITCHER (THUMBNAIL CHIP IN BASE)
 M EI WREATHED CHERRY MASTER BERRY
 W EI WREATHED CHERRY MASTER BERRY
 W EI WREATHED CHERRY SAUCE
 V EI OPEN EDGE HAT

TED SHEIBLEY, 304A HILLCREST DRIVE, NEW CUMBERLAND, PA 17070
 PHONE: (717) 938-6417

P PEACOCK AT URN (N) SMALL ICE CREAM DISH 535
 M OPEN ROSE 7 PC. BERRY SET 20
 P WREATHED CHERRY MASTER BERRY BOWL 200
 P GRAPE & CABLE (N) LARGE FRUIT BOWL 7 PC. BERRY SET 45
 P PEACOCK AT FOUNTAIN, 8 PC. PUNCH SET 155

535
 20
 200
 45
 155
 M SPRINGTIME TABLE SET
 M PEACOCK TAIL HAT
 P GRAPE & CABLE THUMPRINT
 M FRUIT & FLOWERS STEMMED BON BON
 WREATH OF ROSES PUNCH BOWL/BASE (VINTAGE INTERIOR)

** CARNIVAL GLASS FOR SALE **

BURNEY TALLEY, 1814 SLATE NW, ALBUQUERQUE, NM 87104 PHONE: (505) 242-1261
 M WISHBONE CHOP PLATE \$500 M NUART CHRYSANTHEMUM CHOP \$550
 W ORANGE TREE FUNCH BOWL & BASE 550 R DRAGON & LOTUS BOWL - ICE 650
 AND 4 CUPS CREAM SHAPE
 M ORANGE TREE FUNCH BOWL & BASE 110 VASELINE HOLLY BOWL - CANDY 175
 W GARDEN PLATE V+ LARGE RUFFLED BOWL RIBBON EDGE
 G DRAGON & BERRY, IGR. FTD. BOWL 475 R HORSEHEAD MEDALLION NUT BOWL 950
 AME DIAMOND & RIB FUNERAL VASE - (RARE) 450 (A BEAUTY)

TOM & SHARON MORDINI, 36 N. MERNITZ AVE., FREEPORT, IL 61032

PHONE: (815) 235-4407
 M ROSE SHOW 9" PLATE - DEEP COLOR 225 P IMPERIAL GRAPE WATER BOTTLE 130
 VERY SMALL FLAKE OFF OF ONE ROSE
 M FENTON PEACOCK & URN PLATE 165 M LEAF CHAIN PLATE 9" 100
 9" - GREAT COLOR GREAT COLOR
 B ORANGE TREE PLATE 9", SUPER 150 B G & C FUNCH CUPS (4) - EACH 30
 G OPEN ROSE PLATE 9" 75 G STIPPLED
 G HOLLY PLATE 9" (RARE) SMALL 225 W HEARTS & FLOWERS COMPOTE 90
 FLAT FLAKE BOTTOM OF COLOR P STRAWBERRY PLATE (N) 110
 BASE (INSIGNIFICANT) BASKETWEAVE BACK

100

CHARLOTTE TWEDELL, LOUISVILLE, KY 40216

PHONE: (502) 447-1670
 M (2) ROBIN MUGS (EACH) 35 A GRAPE ARBOR TUMBLER 60
 P (2) DANDALINE TUMBLERS - EACH 55 B GRAPE DELIGHT ROSE BOWL 60
 M (3) MEMPHIS FUNCH CUPS - EACH 30 A LOUISA ROSE BOWL 65
 M (2) HARVEST FLOWER TUMBLERS 120 M STAR MEDALLION TUMBLERS, EA. 30
 (EACH) (6)
 M (2) TIGER LILY TUMBLERS (EACH) 30 CARNIVAL BEADED PURSE 125

** CARNIVAL GLASS FOR SALE **

BARBARA BARKER, ROUTE 2, BOX 163 BB, SAVANNAH, MO 64485
 P GRAPE & CABLE - DRESSER TRAY BASE \$175

CHARLES A. ADAMS, 2211 SUNSET BLVD., LOS ANGELES, CA 90026

PHONE: (213) 483-7755/384-5001
 G LUSTRE ROSE, ROSE BOWL, LOVELY 50 IG FINE RIB, 11" TALL VASE, N 65
 IB FINE CUT & ROSES, ROSE BOWL 250 CB PINE CONE 7 1/2" PLATE, 125
 WITH FANCY INTERIOR BRONZE IRD.
 M IRIS, HEAVY, 6 PCS. WATER 500 IG PEACOCK ON FENCE PLATE, LOVELY 375
 SET OUTSTANDING M PANTHER, 7 PCS., BERRY SET 450
 M CIRCLE SCROLL, SPOONER, FINE COLOR 150 ALL MATCHING
 G POPPY, COMPOTE, MILLERBURG 500 * SEND LPSASE FOR SUMMER SALES LIST
 RADIUM

100

ALAINE M. PENNETTE, 23 NANCY LANE, FT. MYERS BEACH, FLA. 33931

PHONE: (813) 463-3918
 A "HOLLY WHIRL" NAPPY (2 HANDLED) 55 G "TEN MUMS" BOWL 75
 A "STIPPLED RAYS" BOWL N 45 M "FISHERMAN MUG" 195
 G "HOLLY WHIRL" BOWL STAR 70 M "3 BANDED" TANKARD PITCHER 70
 MEDALLION CENTER "DRAPE" INT. 12 1/2"
 A "GIC" 9 PIECE MASTER BERRY 265 RED "FLORAL & OPTIC" BOWL 8"-9" 250
 SET N TP CHIPS ON FEET
 G "PEACOCK & GRAPE" BOWL 45 A "ROSETTE" BOWL N 75

CARL LINDQUIST, 513 NINEITH AVENUE, CLARKFIELD, MN 56223

PO EI 3 FTD, TRI-CORNERED CHERRIES 75 PO GI DOME FTD. BANANA SHAPED SKI- 60
 BOWL, PLEATED EDGE STAR BOWL, SLIGHT ROUGHNESS
 PO EI COIN SPOT COMPOTE 50 ON MOLD
 PO EI PINCHED SWIRL TRI CORNERED 60 PO EI HONEYCOMB CARD TRAY, BEADS 65
 ROSE BOWL AND FLOWERS EX
 PO EI COIN DOT COMPOTE 45 PO EI CAROLINE HANDLED BASKET 250
 PO EI DAISY & PLUME 3 FTD. BANANA 55 PO EI OPEN O'S TRI-CORNERED COMPOTE 70
 SHAPED DISH PULLED OUT FROM ROSE PLEATED EDGE
 BOWL, A LITTLE ROUGHNESS ON FEET PO EI HOLLY & BERRY RUFFLED NAPPY, 65
 * HAVE MORE P.O. SEND SASE FOR LIST HANDLED

** CARNIVAL GLASS FOR SALE **

EDWARD L. HENDERSON, 1111 N. COLLEGE, STUTTGART, ARK. 72160		
PHONE: (501) 673-8757 (AFTER 6 PM)		
P EI	"IMPERIAL GRAPE" DECANDER (NO STOPPER)	\$ 75 M EI PLAIN, NO PATTERN ASH TRAY 5 1/2' DIAM \$ 10
LM EI	"FASHION IMPERIAL" 8 1/2" BOWL	20 LM EI "SMOOTH RAYS" 9" BOWL 30
M EI	FENTON "PEACOCK & GRAPE" INT. "BEADED BERRY" EXT. 7 1/2" BOWL	25 M EI "ROCCO" 5" DOME-BASE BOWLS (MINUTE CHIP ON BASE) TWO EACH 10
M EI	(CHIP OFF OF BOTTOM OF BASE)	
M EI	"ROCCO" 5" DOME-BASE BOWLS	20 M EI "FAHION IMPERIAL" COMFOTE (CHIP - TOP RIM) 10
A EI	"CORINTH" 8" BOWL	40 M EI "DAISY & FERN" 6 2/3 NAPPY 20

TOMMY & GLORIA NELSON, "TIARA" PATRICK HENRY DR., P.O. BOX 51, LOUISA, VA 23093

PHONE: (703) 967-1093 (CALL AFTER 6 PM)
GREEN, VINTAGE 9" BOWL BY MILLERBURG (RARE) EXCELLENT CONDITION 575
NO HOBNAIL ON BACK

PATRICIA CRAVER, P.O. BOX 8015, ALLANDALE, FL 32019 PHONE: (904) 427-9380		
P	IMPERIAL GRAPE TUMBLER	30 P N RASBERRY TUMBERS (3) EACH 30
P	PEACOCK AT FOUNTAIN TUMBLERS (6) EA.	30 M TIGER LILY TUMBLERS (2) EACH 20
M	LATTICE & GRAPE TUMBLERS (4) EACH	15 M SCALE BAND 7 PC. WATERSET 175
M	4 STAR MEDALLION TANKARD TUMBLERS EA	12 M N STRAWBERRY HANDGRIP PLATE 75
M	TIGER LILY PITCHER	125 G 3 FRUITS DOME FID. BOWL 50

DICK HATSCHER, BOX 261, WALNUT HILL ROAD, BETHEL, CT 06801

PHONE: (203) 743-1468		
M	ORIENTAL POPPY WATER PITCHER	235 M 7 PC. APPLE TREE WATER SET 225
M	BROKEN ARCHES PUNCH SET & 10 CUPS	195 M PAIR CRUCIFIX CANDLESTICKS 295
P	5 MANY FRUITS PUNCH BOWL & BASE	245 MARIGOLD TO CLEAR
R	RED LUSTER 3 PIECE CONSOLE & 2 CANDLESTICKS	125 P 7 PC. MILLENSBURG PEACOCK AT URN 275
G	FLUTE PUNCH BOWL & BASE	295 BERRY SET 1 SM. BOWL HAS SM. CHIP
	6 CUPS, 1 CUP HAS CRACK	WHITE FLORAL & GRAPE WATER PITCHER 175
		AO HEARTS & FLOWERS COMFOTE 275

** CARNIVAL GLASS FOR SALE **

LLOYD R. WARD, P.O. BOX 787, EULESS, TEXAS 76039 PHONE: (817) 540-0081		
M	OCTAGON COVETED BUTTER	\$165 A ROSE SHOW BOWL, SUPER \$225
P	GRAPE & CABLE SWEETMEAT, CHOICE	245 P RASPBERRY WATER PITCHER, N 195
P	FISHERMANS MUG, CHOICE	95 G RARE - MILLERSBURG HOLLY SPRIG, 165
IB	RARE - PEARLIZED CARNIVAL CENTER BOWL	335 W 6 1/2" DIAMETER DEEP SAUCE 225
W	PERSIAN GARDEN MASTER ICE CREAM BOWL, SUPERB COLORING	225 SET OF 4
		HONEY AMBER COSMOS & CANE COVERED BUTTER 245

WES AND BETTY STRAIN, 832 CARSON ROAD, FERGUSON, MO 63135

PHONE: (314) 524-5608		
M	HEAVY IRIS TANKARD PITCHER	375 B STRAWBERRY BON BON 65
PM	LEAF CHAIN 9" PLATE	115 M GRAPE & CABLE HAT 50
G	ORANGE TREE TRUNK 9" BOWL	90 A HOLLY PLATE 9" 125
B	POINSETTA & LOTUS 10" FOOTED BOWL	175 G GRAPE & CABLE STIPPLED PUNCH CUP, EACH 45
W	APPLE TREE TUMBLERS - EACH (HAVE 6) ALL	90 M FLUTE & CANE GOBLET 45
		450

DELOURIS CRAFT, 702 BRADLEY DRIVE, BLOOMINGTON, IL 61701

PHONE: (309) 662-3610		
M	OPEN-EDGE BASKET, JACK-IN-PULPIT, PASTEL, STRAWMARK	22 W NIPPON PIE CRUST EDGE BOWL 135
A	SAME, 2 SIDES UP, TINY NICK STRAWMARK	45 G LIME GREEN (N) GOODLUCK BOWL 195
M	PEACOCK & URN (N) 10" ICE CREAM BOWL, EXTERIOR, IRIDESCENCE WEAR	185 BASKETWEAVE EXTERIOR, PIE-CRUST EDGE, MFG. FLAW ON BOTTOM (2 MINOR DAMAGE)
B	CELESTE BLUE, 2 ROW OPEN-EDGE BASKETWEAVE ROUND BOWL 7" X 2 1/4", LT. IRIDESCENCE	195

OLA SHOOM, 182 CHELSEA ROAD, KINGSTON, ONTARIO, CANADA K7M 348

PHONE: (613) 389-5293		
A	PEACOCK AT THE FOUNTAIN TABLE SET (N) (BUTTER BASE CHIPPED - MINOR ROUGHNESS AROUND SUGAR RIM INSIDE)	450
		CANADIAN FUNDS

**** CARNIVAL GLASS FOR SALE ****

LORENE SEBAUGH, 9116 Ft. DONELSON DRIVE, ST. LOUIS, MO 63123
PHONE: (314) 843-6122

R EI HOACGA WHISKEY DECANTER \$175 M EI WATER SET - 6 TUMBLERS GRAPE & CABLE - DEEP COLOR \$395
5 SHOT GLASSES
IGEI HOACGA HAT PIN HOLDER 1980 60 B GI FENION BASKET 45
R EI HOACGA LOVING CUPS 1979 50 M EI TOOTH PICK HOLDER 65
M GI BOWL - DOUBLE STEM ROSE 9" 30 G EI BOWL - COINDOT 8" 25
M EI BOWL - AUTUMN ACORN 9" 35 M EI BOWL, STIPPLED RAY, CANDY 35
COLOR MORE LIKE PEACH RIBBON EDGE - BEAUTIFUL

JACK WORKMAN, 1432 SYCAMORE LANE, WOOSTER, OHIO 44691 PHONE: (216) 263-1282
VAS MLSBG. PEACOCK MASTER BERRY 1900 AO (N) THREE FRUITS FOOTED BOWL, 70
BOWL, ONLY ONE KNOWN CRACK, GOOD SHELF PIECE
M FIVE BUTTER FLY & BERRY 20 M BEADED CABLE CANDY DISH 30
5" FOOTED BOWLS - EACH M LIONS FLUTED BOWL 110

22 EDWARD L. HENDERSON, 1111 N. COLLEGE, STUTTGART, ARKANSAS 72160
PHONE: (501) 673-8757 (AFTER 8:00 PM)

P "IMPERIAL GRAPE" DECANTER 75 M PLAIN (NO PATTERN) ASH TRAY 10
(NO STOPPER) (5 1/2")
M "FASHION IMPERIAL" 8 1/2" BOWL 20 IM "SMOOTH RAYS" 9" BOWL 30
M "PEACOCK & GRAPE" "BEARDED BERRY" 25 A "CORINTH" 8" BOWL 40
EXTERIOR 7 1/2" BOWL (CHIPPED BASE) M "ROCCO" 5" BOWL 20
M ROCCO" 5" BOWL (SMALL CHIPPED BASE) 10 M "ROCCO" 5" BOWL 20
M ROCCO" 5" BOWL (MIN. CHIP ED. OF BS.) 10

LEE BRYANT, R #1, BOX 109, DECATUR, IN 46733 PHONE: (219) 639-3415
M THREE FRUIT'S BOWL (CANDY RIBBON 35 G IMPERIAL GRAPE, 7 PC. WATER SET 200
EDGE & BASKETWEAVE) M DUTCH PLATE 12.50
M ORANGE TREE BREAKFAST SET 45 A BUTTERFLY BON BON (SIGNED N) 55
(2 PIECE) M IMPERIAL FLUTE MUG 25
P ROSETTES FOOTED BOWL (SIGNED N) 80 M FASHION WATER PITCHER 100
AQUA #270 COMPOTE (VERY SMALL PO STIPPLED FLOWER FOLDED BOWL 45
BASE BUBBLE)

**** CARNIVAL GLASS WANTED ****

CLAUDE STOEFF, 18233 TORRENCE AVE., LANSING, IL 60438 PHONE: (312) 474-1376
P EI - ACORN & BURR PUNCH BOWL BASE

CHARLES A. ADAMS, 2211 SUNSET BLVD., LOS ANGELES, CA 90026
PHONE: (213) 483-7755/384-5001

M FASHION PUNCH BOWL TOP P G&C, PUNCH BOWL TOP, SMALL
M OCTAGON STOPPER FOR DECANTER ADVERTISING PLATES & BOWLS, ALL COLORS
M TWINS, TOP FOR FRUIT BOWL GOOD PEACH OPAL PIECES

JAMES W. MOORE, 300 MERCER STREET, APT. 10A, New York, NY 10003

N GRAPE & CABLE MASTER ICE CREAM BOWL (ANY) M LONG HOBSTAR OR HOBSTAR &
EB N PEACOCK AT URN MASTER ICE CREAM BOWL ARCHES PUNCH SET (BASE ONLY)
M ORANGE TREE PUNCH SET (BASE ONLY) G N GRAPE & CABLE PUNCH SET (MID SIZE)
EB N TREETRUNK VASE (MID SIZE) BOWL ONLY

LOUIS BRADFORD, Rt. 2 WEST, PADUCAH, KY 42086 PHONE: (502) 488-3005
P BEADED SHELL COVERED SUGAR P BEADED SHELL CREAMER
P BEADED SHELL SPOONER

23 ALAN F. RUSTER, 9803 CLUB CREEK DRIVE, APT. 110, HOUSTON, TX 77036
PHONE: (713) 776-9487

ROBERT IARSEN, 3214 19th St., COLUMBUS, NE 68601 PHONE: (402) 564-2304
R 1977 HOACGA HATPIN HOLDER ANY COLOR "PEACOCK AT THE FOUNTAIN" HATPIN
M BUTTERFLY & BERRY HATPIN HOLDER HOLDER

S. W. MCNAMARA, 2 FIRST AVE., SANDGATE, BRISBANE, AUSTRALIA 4017
CB BUTTERFLY & BERRIES WATER PITCHER M BUTTERFLY & BERRIES WATER PITCHER
M OPEN ROSE MILK PITCHER M 474 MILK PITCHER
M FIELD FLOWER WATER PITCHER M 6 FASHION WINE GOBLETS
M 1 - 474 TUMBLER M 6 WINDMILL TUMBLERS
M 6 FIELD THISTLE TUMBLERS A 6 PUNCH BOWL MANY FRUITS GRAPE DESIGN
CUPS

** CARNIVAL GLASS WANTED **

TED SHEIBLEY, 304A HILLCREST DRIVE, NEW CUMBERLAND, PA 17070

PHONE: (717) 938-6417

ANY COLOR STIPPLED PLATES

ANY COLOR PEACOCK PLATES

LLOYD R. WARD, P.O. BOX 787, EULESS, TEXAS 76039 PHONE: (817) 540-0081

ANY COLOR ODD EPERGNE LILIES/BASES CB FENTONIA COVERED BUTTER

ANY COLOR PUNCH BOWL TOPS/BOTTOMS CB VINTAGE GRAPE SMALL ICE CREAM BOWLS

ANY COLOR BUTTER LIDS/BASES CB ACORN BURRS PUNCH BOWL & BASE

ANY COLOR SUGAR TOPS/BOTTOMS P CIRLED SCROLL SMALL BERRY BOWLS

ANY COLOR COOKIE & TOBACCO JARS W MANY FRUITS PUNCH BOWL VASE &/OR CUPS

LIDS/BASES, ETC. G MIKADO COMPOTE

IB, IG, W WISHBONE EPERGNE CB, IB, IG, AO WIDE PANEL EPERGNE

IB, IG, AO WISHBONE FOOTED BOWLS

24

WES AND BETTY STRAIN, 832 CARSON ROAD, FERGUSON, MISSOURI 63135

PHONE: (314) 524-5608

R MINATURE BLACKBERRY COMPOTE W LID FOR G&C CRACKER JAR

G SAILBOATS PLATE B BASE FOR N CHERRY & CABLE BUTTER DISH

BMG LID FOR N COVERED CANDY JAR

A. C. DICKEY, 144 CHANDLER ST., VACAVILLE, CA 95688

P SPRINGTIME TUMBLERS (NEED 4) W WREATH CHERRY WITH RED CHERRIES

P GRAPE & CABLE, STIPPLED W BLACKBERRY BLOCK

B GRAPE ARBOR W ORGANGE TREE AND SCROLL

P RASPBERRY G SPRINGTIME

EB GRAPE ARBOR IG RASPBERRY

