

## Heart of America

### Carnival Glass Association, INC.

PLEASE SEND ALL CHECKS TO  
GLEN FORNEY, SECRETARY

ALL MATERIAL FOR THE BULLETIN  
SEND TO BULLETIN SECRETARY:

MARGE MILLER  
7605 N. W. EASTSIDE DRIVE  
KANSAS CITY, MO 64152



IF YOUR LABEL SAYS 6-85

THIS WILL BE YOUR LAST ISSUE

RENEW NOW!

=====  
FIRST CLASS MAIL  
=====

First Class Mail  
U. S. Postage  
PAID  
Kansas City, Mo.  
Permit No. 4352



Heart of America  
Carnival Glass  
Association Inc.

Membership June to May  
\$20.00 Per Couple or Single

Published the 15th  
of each month

**PRESIDENT**

Robert Grissom  
7900 Crescent  
Raytown, MO 64138  
(816) 356-5320

**VICE-PRESIDENT**

Nadine Paulsen  
700 Purdom  
Olathe, KS 66061  
(913) 782-1313

**TREASURER**

Karen Engel  
35292 Oak View Drive  
Brownsville, OR 97327  
(503) 466-5989

**SECRETARY**

Glen Fortney  
P. O. Box 303  
Buckner, MO 64016

**BULLETIN SECRETARY**

Marge Miller  
7605 N. W. Eastside Drive  
Kansas City, MO 64152  
(816) 741-4635

All monetary figures quoted are in U. S. dollars.  
Please make checks for dues payable to H.O.A.C.G.A.  
and send them to the secretary as listed above.

**\*\* DO NOT SEND TO THE BULLETIN SECRETARY \*\***

**MINUTES OF THE JULY MONTHLY MEETING**

At 2 p.m., July 28, 1985, The HOACGA Monthly Meeting was called to order by President, Robert Grissom. The meeting was held at Raytown City Hall.

President Grissom gave the Treasurers report as reported by Treasurer, Karen Engel. It was approved as read.

The minutes of the last meeting were read by Secretary, Glen Fortney and accepted as read.

President Grissom appointed Eleanore and Charles Mockel as Co-Chairpersons of the 1986 Convention.

A motion was brought to the floor, and seconded, for the discussion of an auctioneer for the 1986 Convention. John Woody of Douglas, Kansas, was accepted, providing he could come up with an auction that would be accepted by the Convention Committee.

A report was given on the inventory of our club souvenirs taken by Davis Shikels and Robert Grissom.

A schedule of the next three monthly meetings are as follows:

August - Raytown City Hall. Bring and display any of your favorite Fenton glass.

September - Picnic at Weatherby Lake

October - Raytown City Hall. Bring your plates (large or small) for display and discussion.

(This will be a very interesting display as I know there are some beautiful plates to be shown.)

The July meeting was well attended and an enjoyable time was had by all. There were many pieces of Red, White, and Blue glass displayed and Robert Grissom brought a beautiful Kitchen Butter Dish to show.

With no further business, the meeting was adjourned.

Nadine Paulson provided some very delicious refreshments which were enjoyed by all. Thanks Nadine.

Glen Fortney  
Secretary



## PICTORIAL PATTERN PARADE

By John & Lucile Britt

### WHERE ARE THESE IMPERIAL RUBIGOLD PIECES?

Imperial was one of the larger producers of carnival glass, yet some of the pieces that are shown in the accompanying ad are very rare.

This ad was taken from an old Imperial Catalog, or book as they call it in this case. Notice that these pieces were advertised for sale in rubigold. Rubigold was Imperial's descriptive name for their deep rich marigold color.

All of the pieces in the top row and the three on the left in the bottom row are "Star & File." Starting in the upper left, I have never seen the little "Star & File" cordial in carnival glass. The octagon pattern cordials are very hard to find - so, no doubt, very few cordials were ever made by Imperial in carnival glass. I believe there has to be a few of these "Star & File" cordials out there somewhere.

The wines can be found, and even in complete sets with the wine decanter, but they too are certainly not common.

Next is the "Star & File" goblet. Again, even though I have thoroughly searched for one of these, I have never seen one in carnival glass.

You do see the sherbets occasionally, in both the low and high styles.

I have seen only three or four of the fruit salads that is shown next to the little six inch plate. The little plates are seen occasionally, but again they are certainly not common. Notice that the ad states that they were made to hold the fruit salad, the sherbet, the goblet and the ice tea tumbler.

The ice tea tumbler is illustrated in the bottom row. Actually, I have never searched harder for any piece of carnival glass than I have for one of these tall sized ice tea tumblers. In all my searching, I have seen only one example and it was not for sale. Surely, there has to be more than one "Star & File" ice tea tumbler out there in existence. Imperial surely made more than just one tumbler in this larger size. I haven't given up as yet and some day I am going to find one of these (that is if my legs don't give out on me first).

The regular size "Star & File" tumbler is quite available and not real hard to find.

Notice that they list the "Star & File" cup as a custard and not as a punch cup, even though it would certainly hold punch very nicely too. These little cups are rather scarce.

The last four pieces in the bottom row are of the "Imperial Flute" pattern. The large goblet, on the far right, is actually quite common. I have seen a good many of these and sometimes as many as five or six in one place.

The little wine is a different story. Why they made so very few of these I don't understand. I have seen only three or four of the little wines, and even less of the tiny cordials.

It is interesting to note that the goblet was made with an eight sided base, one for each panel, and with a plain or smooth bottom. The much smaller wine and cordial have a round base with a star like figure pressed into the bottom of the piece. They all three contain the eight panels or flutes.

You might want to keep your eyes open for the "Star & File" cordial, goblet, and tall ice tea tumbler. More than likely, if you would see any of the these pieces in a flea market, shop, or antique show, they would be very much under priced. This also holds true for the little wines and cordial in the flute pattern. They are very tough to find. Happy hunting!



PHOTOSTATIC COPY OF OLD IMPERIAL CATALOG AD



## EDUCATIONAL TUMBLER SERIES

By John & Lucile Britt

### **MILLERSBURG "DIAMOND" TUMBLERS**

"Diamond" Tumblers and Water Sets were made by the old Millersburg Glass Company of Millersburg, Ohio. This pattern is the most common of the Millersburg water set patterns. Several punch bowls have been reported in this pattern, however, they would be classed as very rare. To date, no punch cups have ever been reported to go with the punch bowls.

"Diamond" Tumblers are usually found in amethyst, green, and marigold. Marigold tumblers seem to be somewhat harder to find than are those in amethyst or green. Two other colors that are known to exist in "Diamond" Tumblers are an aqua-like tone and a beautiful amberish shade. Tumblers in both these colors are hard to find and will demand a higher price. The few examples that I have seen in these two colors have been exceptional in color and iridescence. "Diamond" Tumblers have nine serrated diamonds that form a band around the outside of the tumbler. The bottom of the base of this tumbler is smooth with no star type design whatsoever.

Owen's also lists the "Diamond Variient" Tumbler (Owens #35) in his popular carnival glass tumbler book. This tumbler is shown on the right in the accompanying photograph. It is simply the "Diamond" Tumbler that has been flared out at the top. Most tumbler collectors desire examples of both these types for their collection.

This is article #91 in this series. Next month we will feature the Northwood Flute Tumbler.



# Carnival Cameos

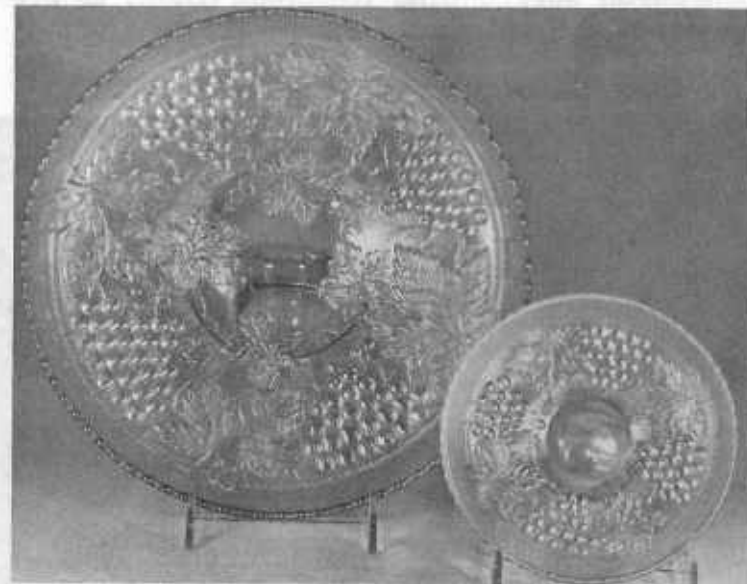
BY DONALD MOORE

## **ICE CREAM BOWLS**

(First Two in a Series of Nine)

It has become standard practice to call all round (non-ruffled) bowls, ice cream bowls. Except for Grape & Cable (Photo #1) and Peacock & Urn (both Northwood and Millersburg) - (Northwood shown in Photo #3), none of the other bowls are true ice cream bowls. They should be referred to as ice cream shapes. Even then we are taking liberties as most of them are too deep to qualify. A true ice cream bowl is on a collar base and comes out very flat from the center and then turns up sharply about an inch or so from the outer edge. The master ice cream bowl will measure from 10" to 11" while the individual bowls will run some 5 1/2" to 6".

### #1 - ICE BLUE GRAPE & CABLE





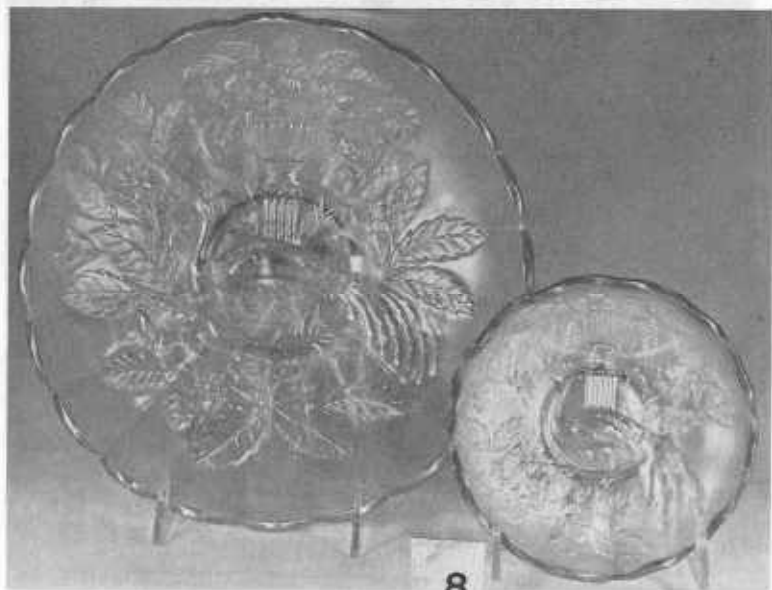
I have always wondered if we care correct in calling any of these bowls or sets "ice cream" pieces - even the Grape & Cable or Peacock & Urn. I've never understood the need for a master ice cream bowl. When we made ice cream on the farm in Iowa, we weren't about to waste time dipping it into a serving bowl. We dipped directly from the freezer. I have been told, however, that in the city they sold bulk ice cream from horse drawn wagons. That might explain the need for the master bowl, but we farm boys wouldn't know about such things.

This ice cream bowl terminology is not used anywhere in the old Butler Brothers Catalogs. Neither the Grape & Cable nor the Peacock & Urn are shown, but the other bowls we now refer to as ice cream bowl shapes are called berry bowls, fruit bowls, or salad bowls. Just where the "ice cream" tag came from is uncertain.

When Mrs. Hartung came out with her Book 4, she included a section on Grape & Cable. In it she says, "Mention should be made of rare size and shape of bowl" and goes on to describe the 11" master ice cream bowl. She does not give it a name however. To add to the confusion, she shows the small stemmed Grape & Cable sherbet or compote shaped piece and calls it an "ice cream dish." She says, "these actually came in sets and were intended for ice cream." I have never seen or heard of a master bowl to go with this piece.

Despite the confusion surrounding ice cream bowls, we are locked into the terminology we now use and should accept it.

#2 - ICE BLUE NORTHWOOD PEACOCK & URN



RARIETIES AND SELDOM SEEN

By Ivan & Betty Mitchell

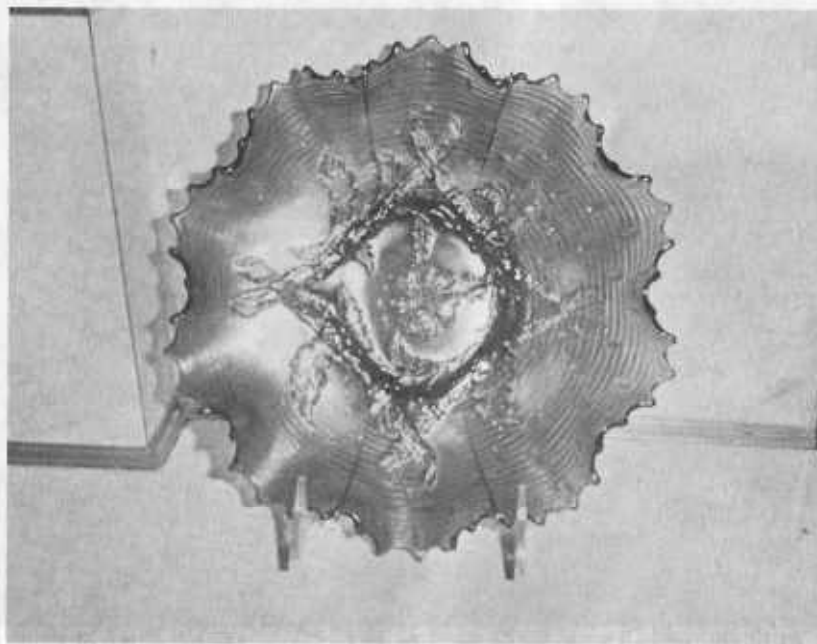
"SMOKEY" APPLE BLOSSOM TWIG, RUFFLED PLATE

This Smokey Apple Blossom Twig Plate (Ruffled) is extremely rare, as it is believed to be the only one known. You cannot detect that it is Smokey until held up to the light.

This generally comes in colors of marigold, peach opal, purple, and blue. It has as its exterior pattern the "Big Basket Weave Pattern."

We have two other of these plates that are purple when held to the light, but when observed on a flat surface, or hung on the wall, are beautiful blues.

The mold work and the details on this plate are exceptionally nice. This is also found in a true plate.





**WHAT IS IT?**  
From Wilma Wise

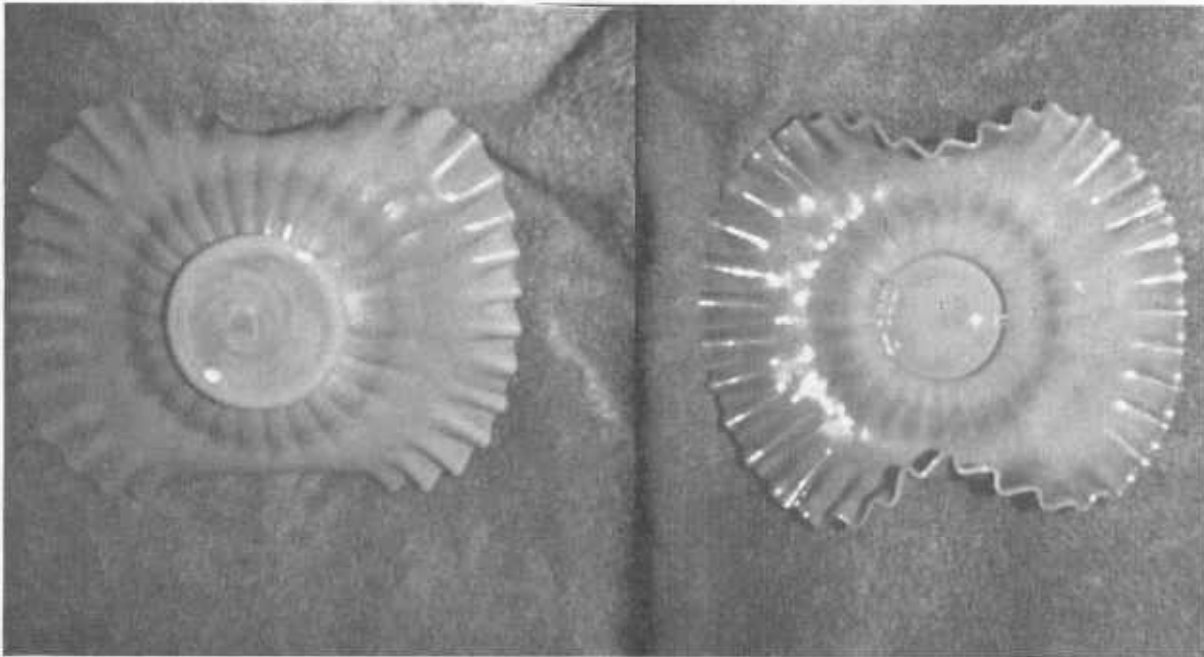
I'm enclosing a couple of photos of a bowl I bought recently. I'm really not sure what it is.

The base glass is a different shade of yellow, maybe custard. It has iridescence on the inside. No iridescence on the underside.

There is no mold mark, the underside is ribbed. It measures 9" at the longest point. Two sides turn up.

I would appreciate any information on this. Please send to:

Wilma Wise  
7445 South Yale - #136  
Tulsa, Oklahoma 74136



THIS IS A PICTURE OF OUR TREASURER AND HER HUSBAND, DOUG, AND SON.



\*\*\* 1985 CARNIVAL CALENDAR \*\*\*

AUGUST 8-10 - 12TH ANNUAL CONVENTION, PACIFIC NW CARNIVAL GLASS CLUB at the Holiday Inn HoliDome in Eugene, OR. There will be another famous "Salmon BBQ Picnic" to kick off the convention along with lots of other exciting events. For more information contact Karen Engel, 35292 Oak View Drive, Brownsville, 97327 - (503) 466-5989 or work (503) 466-5191.

AUGUST 31 - AUCTION NOTICE - Colesium Holiday Inn, Richfield (Cleveland), Ohio. 9 A.M. Collection of Fern Jackson and Nell Muns from Washington. Some of the finest examples of RARE items including the only known Fenton 2 Row Open Edge Blackberry Spitton. Tom Burns

It was real neat having you come to Kansas City to attend our auction. Strouds wants you back again your next trip to Kansas City. Thanks.

Marge Miller

SEPTEMBER 6-8 -3RD ANNUAL CONVENTION, NEW ENGLAND CARNIVAL GLASS ASSOCIATION, Quality Inn, Chicopee, Mass. Sunday Auction. For more information contact Howard Robinson, Convention Chairman, (413) 536-4319.

OCTOBER 11-13 -2ND ANNUAL CONVENTION, CANADIAN CARNIVAL GLASS CLUB. George Loescher, Banquet Speaker on Saturday, Auction Sunday, I.D. Clinic & more, Conestoga Inn, Kitchener, Ontario. For information contact: Janet Knechtel, P.O. Box 3023, Kitchener, Ontario N2G 4R5.

OCTOBER 18-20 - CONVENTION of THE AIR CAPITOL CARNIVAL GLASS CLUB Airport Sheraton Inn, 5500 W. Kellogg, Wichita, KS (I-235 & US 54 West). Contact Don Kime, 1202 West 4th, Haysville, KS 67060.



Dear Marge & Cooley:

Ever so many thanks to everybody for making my stay in Kansas and the Convention so enjoyable. I wouldn't have missed it for the world. I'll be back for more!

Many thanks to David Shikkles for showing us a bit of Kansas City. Also to Ken and Bev Osbon and everybody else who was so kind and hospitable and especially to Don Moore for the lovely bell he presented us with at the banquet.

Have only just got home from England and Europe. I had a round the world ticket and could have stayed longer and gone to more places, but I'd really had enough, especially in view of the frightful havoc at some of the air terminals. Needless to say, I dodged places like Frankfurt, etc. Singapore's change air terminal is a delight. Not only beautiful, but it seemed so safe.

Had no luck in U.K. looking for Carnival Glass. London was chock a block with four fellow Americans spending their dollars freely. Went to numerous flea markets and fairs, but nothing of note to report in the way of glass.

I was rather lucky when I got home as I found a Mikado fruit bowl, amberina color down to very pale on the stem. The cherries are beautiful and it is perfect. It cost me \$130 Australian. Previously I acquired a Daisy Block non-boot (English), an interesting piece (marigold). I am a very selective buyer and have to really like something before I buy it.

Not much Carnival Glass comes our way in the West. Mostly it comes from U.K. brought in by antique dealers and shipped by container. That also applies to the Eastern States. But the odd piece does turn up locally from deceased estates, now and again - the price rising all the time.

When I was at the Convention, I did manage to acquire an Emu piece which I have been lusting after for some time. It completes my Australian collection of pieces. I only need a KIWI piece now. I have several small and large Kangaroos and Kookaburra I can do a deal with, but would buy out right if that suited best - so keep your eyes peeled. If you hear of one, let me know. Buttons and hat pins I also collect. I find buttons so fascinating, especially the Carnival ones. I found a few, but I must contact Delbert Rowden as he had some beauties - but wouldn't sell till he had got a firm price on them. If you see him perhaps you could mention it.

Hope you and Cooley and your family are all well. It was a pleasure to meet you all, especially the Britts and McGrews etc. Congratulations on putting on such a good show for everybody.

Sincerely,  
Nance Blackburn  
25 Troy Street  
Applecross Perth  
West Australia 6153  
Phone: (09) 364-3717

**SINCERE SYMPATHY**

A note was received from Mary & Milt Rushton (14 Elrod Street, Greenville, South Carolina, 29609) telling us of the loss of their son, Bob, age 53, who lived with them for the past ten years.

"He was to leave the next morning with the Shriners but suffered a massive attack around 2:30 A.M. By the time the ambulance arrived, he was gone. It is more than we think we can stand sometimes."

Our deepest sympathy is extended to the Rushtons.

\*\*\*\*\*  
**AIR CAPITAL CARNIVAL GLASS CLUB**

Our attendance was quite small this month due to vacations and illness.

A report was given on the International Convention held in Cedar Rapids, Iowa, in June. This was the first International Convention I have had a chance to attend so it was quite interesting to me. I was able to see all of the room displays and will remember the water set display forever.

Plans are still being made for our convention in October. Our committee members are working very hard to make it a fun time and we hope you are all making plans now to attend. We will have some surprises for you, so make it a must on your calendar. We are asking all of you who attend, and want to, to bring a room display. There will be awards for the top three (3) displays.

For our educational portion of the meeting, several of the members brought recently purchased pieces of carnival to look at.

Donald E. Kime  
Secretary



## TAMPA BAY CARNIVAL GLASS CLUB NEWS

The Tampa Bay Club will hold it's Fifth Lose Your Heart To Carnival Glass Jamboree, February 13, 14, and 15, 1986, at Lakeland, Florida.

Past Jamborees have attracted Carnival Glass Collectors from around the country and Canada. From inquires and comments heard at the National Convention, the 1986 affair will be a block buster!

Art Smith has announced that John Britt, ably assisted by Lucile, will be the banquet speaker. A reunion will be held in the Hospitality Room, February 13, with refreshments.

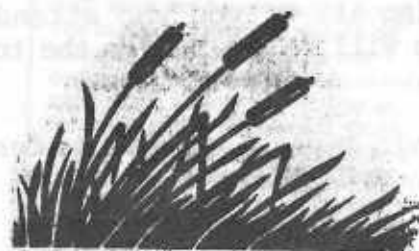
On Friday the popular seminars will be held. Albert Rodenhouse will discuss the variants among Carnival Glass Tumblers. Robert Vining will present an illustrated lecture on Carnival Punch Bowls. Shirley Pfaff will exhibit her outstanding collection of Carnival Glass Purses and discuss this interesting carnival glass item. Tom Burns will report on ways to upgrade your collection or add unusual specimens of carnival. After a lunch break, a Show and Tell Program will be held. Friday evening will conclude with the annual banquet.

On Saturday the giant hall will be opened for the sale and display of carnival glass. A minimum of 35 Tables will be filled with eye appealing glass awaiting the eager buyers. On Saturday evening a gala Tom Burns' Auction will be held. The 1985 Auction featured excellent glass and the 1986 Auction will offer a variety of outstanding carnival glass.

A special rate of \$36 per room is being offered, good for 10 days prior or after the Jamboree. It isn't too early to think about a winter vacation. Lakeland is within one hours drive of Epcot Center, Disney World, and all central Florida's attractions.

For additional information, write or call:

Art Smith  
4535 Holder Ct.  
Lakeland, Florida 33803  
Phone (813) 644-4058.



Dear Marge:

Want you to know how much we appreciate your work with the Bulletin. You deserve much praise for assuming the duties with appearance of ease.

We can appreciate the work involved in your efforts, knowing only too well, the hours of involvement to get new Carnival group up and going.

We hope you will insert this letter of announcement in the August issue of the Bulletin. Thanks so much.

Dean & Diane Fry  
San Diego, California

## EXCITING NEWS IN THE CARNIVAL WORLD!

With great pleasure and enthusiasm, I announce the formation of San Diego County Carnival Glass Collectors Club at an organizational meeting held June 6, 1985. Twenty-six collectors and interested persons were in attendance. A volunteer Treasurer accepted dues from 22 of those attending.

Membership decided to wait until the July meeting to elect a full slate of officers. A program, using patterns of glass illustrated on the American Carnival Glass flyer, was presented. Volunteers offered to post notice in antique malls over a 50 mile radius announcing our group, along with the next meeting date.

Refreshments were served and the first meeting entered history with resounding success! We adjourned after a two-hour meeting feeling gratified with results.

Last evening, July 23, 1985, our second meeting came to order at 7:30 P.M. Added mailing solicitation and the continued advertising effort brought even more interest than before! Thirty-six signed in with 33 of those paying dues.

Raffle prize was won by Margaret Werdal, who graciously provided refreshments for the evening. Two door prizes were awarded to Kathy Harris and Paul Lines.

An informative program was presented by Rusti Shupert, using pastels and animal patterns as the theme.

Several members brought glass for sale and much interest was shown in that area.



Officers for the coming year were selected as follow:

President:	Diane Fry
Vice-President & Program Chairperson:	Dee Sponsler
Secretary & Bulletin Chairperson:	Kim Landry
Treasurer:	Kathy Harris
Historian:	Rusti Shupert
Refreshment Chairperson:	Margaret Werdal

Encouragement from lovely carnival people all across the country has been much help in Dean's and my effort to establish this group. Michael and Dee Sponsler have been extremely supportive! Don Moore, Grace & Byron Rinehart, Bob Lovell, Lee Markley, and many of those attending International Convention in Cedar Rapids voiced invaluable support. We thank you all for those kind words!

Expecting even larger attendance, our next meeting date is set for September 9, 1985.

Trust me to keep you informed! Heart of America, International, and American Carnival Glass Associations are all benefiting in this effort of ours, as well as our Southern California Carnival Glass Club.

Respectfully submitted,  
Diane Fry, President

#### ACGA CONVENTION AT ELKHART, INDIANA

The ACGA Convention came so soon after the ICGA we barely had time to unpack one bunch of dishes and pack up another to go.

We unpacked our "Patriotic Red" display and got it assembled in the front window - then we went around to visit and look (which is the best part of any convention). The Motel was exceptionally nice to us and we felt almost at home, remembering being there a few years back. Jerry Hunter had been asked to make arrangements with the Midway Inn Motel and had done an outstanding job. We extend special thanks to her. Jerry and husband, Delbert, had a fantastic "Peacock" display and no one was surprised when they won first place. The Hunters have real live peacocks at home too.

It was a joy for everyone to see Louie Waldsmith there with his charming daughter, Carmen, as stand-in for our dear Fern who left us at Easter time. We missed her over and over. Louie's carnival was being sold at the Thursday night auction. We had wondered if Louie could possibly be there after his recent bypass surgery. Glad he seems to be doing so well. He looked just great.

Tom and Bill did their usual superb job of auctioneering.



Grace & Byron Rinehart  
Charleston, West Virginia



\*\*\*\*\*

Dear Marge:

Our NCCC Convention is history now and all in attendance had a good time.

On the Fourth of July you could watch the fireworks from the hotel window. Truly spectacular as was all the Carnival Glass for sale and display.

New officers were elected for 1985-86. They are:

President .....	Karma Vullo
Vice-President .....	David Middleton
Secretary .....	George Thomas
Treasurer .....	June McCarter
Editor .....	Peggy Bullard

Congratulations to all the NCCC officers!

Don Moore was the guest speaker at the Saturday banquet. He spoke on "Carnival Glass - As American As The Fourth of July." His red, white, and blue glass was beautiful! Don and Connie were featured in an article in the San Jose Mercury News prior to the Convention. I have enclosed a copy for your enjoyment and publication in the bulletin.

Really enjoy your monthly newsletter. Congratulations on your election to be the HOACGA Bulletin Secretary. Thanks for all your hard work.

Sincerely,  
Judy Kasper



### H.O.A.C.G.A. PATTERN NOTEBOOK

The H.O.A.C.G.A. Pattern Notebook was started seven years ago with a special designed notebook and it included the First Section on Punch Bowls. Each succeeding year a new and different section has been added. To date, the Sections of MUGS, TABLE SETS, WATER SETS (3 Sections) and ROSEBOWLS (2nd Section will be completed in 1986) have been added.

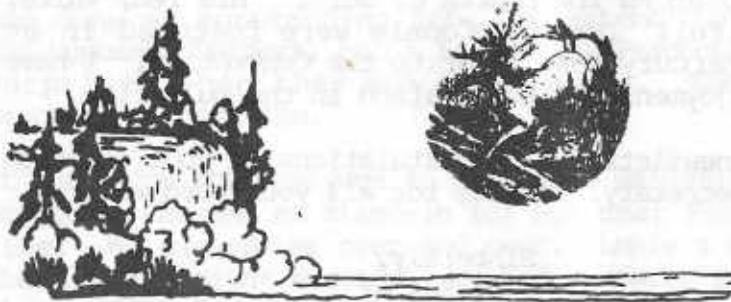
The SECTIONS ON PUNCH BOWLS, MUGS, TABLE SETS, and the FIRST WATER SET SECTION was available to members at no cost. The SECOND and THIRD WATER SET SECTIONS are available at a cost of \$3.25 each and the FIRST ROSEBOWL SECTION cost \$4.00.

If your Notebook is short any of these sections and you want the missing section (s), please send your order, along with the appropriate amount of money, to: Glen Fortney, Secretary. Please include \$1.00 Postage for each section ordered.

If any member, regardless of whether you have a Notebook, wants any of these sections, please send your order to the Secretary for as many of these as you want. The charge for each section is the same as above. Seventy notebooks, with all all of the sections included, are still available at a cost of \$18.00 plus \$4.00 postage.

When our present supply of Notebooks and the various sections are depleted, the Sections will not be reprinted. So, if you want any of these, PLEASE ORDER NOW while they are still available.

Each year, as new sections are added to the Notebook, it becomes a valuable reference for the Carnival Collector. If you do not have your Notebook, or have not kept it up-to-date, you are missing some very good information.



### PRICES FROM ANTIQUE AUCTION AT CIVIC CENTER, MIAMI, OKLAHOMA

W. HEAVY IRIS TUMBLER	\$100	G. THREE FRUITS BOWL	\$ 65
A. LOUISA ROSEBOWL	65	M. 5 PC. BUTTERFLY & BERRY SET	100
M. GRAPE & PEACOCK BOWL	30	W. GRAPE DELIGHT ROSEBOWL	70
M. MILLERBERG BLACKBERRY BOWL	42	M. FTD. CHERRY BOWL	55
A. GRAPE LEAVES BOWL	45	G. MILLERSBERG ROSALIND BOWLS	150
M. OCTAGON VASE	50	M. MILLERSBERG ROSALIND BOWLS	110
G. WISHBONE BOWL	90	G. HORLACHER ADVERTISEMENT BOWL	90
M. FASHION WATER PITCHER	225		

Approximately 150 pieces of Carnival Glass were sold by Col. Delbert Rowden and Col. Mike Torchia of Columbus, Kansas.

\*\*\*\*\*

Dear Marge:

Your doing a great job on the bulletin. Thanks for including the information on mosquitos and heartworm disease for us dog lovers. Maybe you can use the following as a reminder to folks not to take their dog with them on these hot summer days. *Darlene Yohe*

#### DON'T PARK THE DOG WHEN YOU PARK THE CAR

**THE DANGER:** Brain damage, even death, arrives swiftly when a dog's temperature rises only five or six degrees above a normal 101-102 degrees. In a closed car, heat builds faster than a forest fire. An 84 degree day means 120 degrees within 30 minutes in a parked car with the windows up. On hotter days —quicker death! Don't let this happen to you! Don't let it happen NEAR you!

**EMERGENCY REMEDY:** When an animal is discovered in a hot car - even if unconscious - there may still be time to save it if you act fast.

**RECOMMENDED FIRST AID PROCEDURE:** Immerse the animal in cool water until body temperature has lowered.





## How To Be a Dog's Best Friend

Your dog needs running room, friendly treatment, a chance to play without being run over, a chance to wag his way toward happiness and a long life.

**AT MEAL-TIME . . .** Dog diet is a big subject, not a small one. Breed, size, age and activities all determine what your dog should eat. Meals should be regular though grown dogs (not puppies) can do well on one meal a day if it contains the right ingredients. Most commercial dog foods have been tested for balance and healthfulness. Avoid raw eggs; don't give a grown dog milk; don't let it have small or splintery bones (which can lodge in the throat).

**AT BATH AND BED-TIME . . .** Do you have an outdoor dog or an indoor dog? Both need warmth and cover. The outdoor doghouse should be elevated to keep out water and dampness. Dogs tied up where they can't reach shelter are victims of reckless (and cruel) owners. Dogs need combing, should be checked for fleas or ticks, and — most of all — they need regular exercise. You can use exercise, too; so play with him and see there's a chance for the dog to run and sport about.



## Purr-fect Care of Cats

Cats are very sensitive, very particular, very glorious creatures who do best when those who raise them know their needs. Here are tips you'll find useful in keeping your cat healthy, happy and a whiskered delight.

**AT MEAL-TIME . . .** Chicken bones, even pork bones, can splinter and catch in the throat — don't feed them to your cat. It needs a balanced diet and many commercial cat foods supply this need. But fish-based cat foods should have Vitamin E added. Cats need fresh water — and kittens, newly-weaned, should usually have milk along with the "grown-up" food.

**AT BED-TIME . . .** Cats are choosy on where they'll sleep but API recommends "a cushion in a cardboard box with high sides." Don't let your cat get trapped nor confined in damp, drafty spots — that can cause health troubles just like it does for humans.

**CAT-LIFTING . . .** It's fun to pick up a cat and no fun for the cat if done the wrong way. To lift correctly, slip a hand under the chest, holding the front legs "gently but firmly" with fingers; cup the other hand under the cat's hindquarters. Grabbing by the scruff of the neck, by the legs, even around the stomach can be harmful.



### \*\* CARNIVAL GLASS FOR SALE \*\*

BURNIEY TALLEY, 1814 SLATE NW, ALBUQUERQUE, NM 87104 PHONE: (505) 242-1261		M	FISHERMAN'S MUG	\$235
A	SOWERBY DIVING DOLPHINS FOOTED BOWL - MINI	M	BO-PEEP MUG	125
A	PINE CONE 6" PLATE	G	PINE CONE 6" PLATE	125
G	ORANGE TREE WINE COLOR (RARE)	R	SAILBOATS RUFFLED BOWL	500
W	GARDEN PATH VT. LARGE ICE CREAM SHAPE BOWL - LT.OPAL ON TIPS OF FLUTES	PO	SKI-STAR 6" CRIMPED EDGE PLATE (RARE)	125

21

JANE DINKINS, 1100 RIDGELEY DRIVE, HOUSTON, TEXAS 77055

PHONE: (713) 465-0557

M	EI	LILY OF THE VALLEY TUMBLER (OR WILL TRADE FOR A BLUE ONE)	400	M	EI	PILLAR FLUTE ROSEBOWL (IMPERIAL)	20
M	EI	474 PUNCH CUP	20	SM	EI	PANSY, OPEN SUGAR (IMP)	35
AMB	EI	PANSY, OPEN SUGAR (IMPERIAL)	35	CLM	EI	IMPERIAL GRAPE RUFFLED PLATE HAS METAL HANDLE FOR CONVERSION TO BRIDE'S BASKET	50
M	GI	LUSTER & CLEAR ROSEBOW (IMPERIAL)	35	M	EI	TREE OF LIFE TUMBLERS	15
M	EI	PIPE MATCH HOLDER (U. S. GLASS)	40	B	EI	ENAMELLED CHERRIES TUMBLER (OWENS #49)	20

R. H. ASHMORE, JR., 6150 CRITTENDEN AVENUE, INDIANAPOLIS, IN 46220

PHONE: (317) 255-3949

A TOP FOR ORANGE TREE POWDER JAR 25



\*\* CARNIVAL GLASS FOR SALE \*\*

BURNEY TALLEY, 1814 SLATE NW, ALBUQUERQUE, NM 87104 PHONE: (505) 242-1261  
 A SOWERBY DIVING DOLPHINS \$175 M FISHERMAN'S MUG 235  
 FOOTED BOWL - MINT 125  
 A PINE CONE 6" PLATE 125  
 G ORANGE TREE WINE COLOR (RARE) 175  
 W GARDEN PATH VT. LARGE ICE 325  
 CREAM SHAPE BOWL - LT.OPAL  
 ON TIPS OF FLUTES

JANE DINKINS, 1100 RIDGLEY DRIVE, HOUSTON, TEXAS 77055

PHONE: (713) 465-0557  
 M EI LILY OF THE VALLEY TUMBLER 20  
 (OR WILL, TRADE FOR A BLUE ONE)  
 M EI 474 PUNCH CUP 20  
 AMB EI PANSY, OPEN SUGAR (IMPERIAL) 35  
 M GI LUSTER & CLEAR ROSEBOW 35  
 (IMPERIAL)  
 M EI PIPE MATCH HOLDER 40  
 (U. S. GLASS) 20

TED SHEIBLEY, 304A HILLCREST DRIVE, NEW CUMBERLAND, PA 17070

PHONE: (717) 938-6417  
 P SINGING BIRDS 7 PC. WATER SET 675  
 M SINGING BIRDS 7 PC. WATER SET 560  
 M PEACOCK & GRAPE 9" FOOTED PLATE 175  
 P GRAPE & CABLE TANKARD 7 PC. 825  
 WATER SET  
 BLUE WINDFLOWER 9" PLATE 90  
 AMY ROSE SHOW PLATE 425

WHI GRAPE & CABLE CENTERPIECE 350  
 BOWL (POINTS UP)  
 BLUE HOLLY 9" PLATE 140  
 AMY FLUFFY PEACOCK 7 PC. 925  
 WATER SET  
 BLUE PERSIAN MEDALLION CHOP 250  
 PLATE

\*\* CARNIVAL GLASS FOR SALE \*\*

BERNIE MAHN, 1001 ROCK ROAD, DESOTO, MO 63020 PHONE: (314) 586-6226

VAS EI CONCAVE DIAMOND TUMBLER \$170 A EI (N) MEMPHIS PUNCH CUP S 30  
 PD EI SIX PETALS 7 1/2" 80 A EI (N) PETALS 7 1/2" LOW 100  
 CRE BOWL  
 G EI FORGET ME NOT TUMBLER 60 M EI FLAID 9" BOWL 45  
 A EI GRAPEVINE LATTICE TUMBLER 45 M EI GARLAND ROSE BOWL 40  
 W EI GRAPEVINE LATTICE 7" 85 M EI 474 PUNCH CUPS (HAVE 4) EA. 15  
 RUFFLED PLATE

JUDY KASPER, 2567 LOOMIS DRIVE, SAN JOSE, CA 95121

PHONE: (408) 224-4349 AFTER 6 PM CALIFORNIA TIME  
 B EI HOLLY COMPOTE 35 M EI ACORN BURR PITCHER 175  
 M EI GOLDEN WEDDING PINT BOTTLE 15 (THUMBNAIL CHIP IN BASE)  
 WITH CAP  
 M EI HEAVY GRAPE 6" BOWL 30 M GI SAILBOATS 6" SAUCE 30  
 M EI LOTUS & THISTLE 6" BOWL 40 M FI HORSE MEDALLION 6" BOWL 55  
 G EI PEACOCK TAIL 6" 80 G EI LOTUS & GRAPE, FOOTED 70  
 6" BOWL  
 TRICORNERED BOWL R PI GRAPE & CABLE 6" BOWL 350

ALAINE M. PENNETTI, 23 NANCY LANE, FT. MYERS BEACH, FLORIDA

PHONE: (813) 463-3918  
 B CAPTIVE ROSE PLATE \$140 A G/C PLATE - SMALL CHIP 90  
 A WILD STRAWBERRY BOWL 10" (N) 120 INSIDE FOOT  
 G WILD STRAWBERRY BOWL 6" 50 P PANSY PICKLE DISH 35  
 UNLISTED IN G B ORANGE TREE POWDER JAR 85  
 B BUTTERFLIES - 2 HANDLED BON BON 50 M WINE & ROSES WINES (2) BOTH 65  
 A PEACOCK AT FOUNTAIN SPOONER 60 A VINTAGE PUNCH CUPS (2) BOTH 45  
 SMALL NICK



\*\* CARNIVAL GLASS FOR SALE \*\*

DARLENE YOHE, P.O. BOX 343, STUTTGART, AR 72160 PHONE: (501) 673-3437

M	ORANGE TREE MUG	\$ 20	P	GRAPE & CABLE PIN TRAY,	\$ 75
P	GRAPE & CABLE COLOGNE	175		CHIP UNDER BASE	
P	GRAPE & CABLE DRESSER TRAY	185	G	BUTTERFLY & BERRY MASTER BERRY	130
G	FLUTE BUTTER LID	45		BUTTERFLY INTERIOR, SCARCE COLOR	
P	SPRINGTIME COVER BUTTER	175	P	ACORN BURR SUGAR LID	35
	SMALL CHIP UNDER BASE		A	MAPLE LEAF TUMBLER	40
M	GRAPE & CABLE COVER SUGAR, LITTLE ROUGHNESS ON THUMBPRINT				60

HAROLD R. WAGNER, 5951 FREDERICKSBURG ROAD, WOOSTER, OHIO 44691

PHONE: (216) 264-3703 AFTER 5 P.M.

M	4 ORIENTAL POPPY TUMBLERS, EA.	35	P	6 ORIENTAL POPPY TUMBLERS, EA.	40
M	5 IMPERIAL GRAPE TUMBLERS, EA.	15	M	5 GRAPE & CABLE TUMBLERS, EA.	20
M	5 VINEYARD TUMBLERS, EA.	15	M	MILLERSBURG CHERRY TUMBLER,	100
A	MILLERSBURG POPPY COMPOTE	475		(GROUND BASE)	
A	MILLERSBURG SWIRL HORNAIL	350	M	MILLERSBURG FEATHER & HEART	375
	SPITTON (FLAKE UNDER RIM)			PITCHER	
A	MILLERSBURG CHERRY BOWL 1.0"	95			
	ICE CREAM				

24

BARBARA NELSON, RFD #4, BOX 155, LACONIA, NH 03246 PHONE: (603) 293-7246

A	GI MILLSB. DIAMOND PITCHER	150	M	EI MILLSB. HOLLY WHIRL BOWL	30
B	GI BEADED CABLE ROSE BOWL (N)	65		8" STAR CENTER - RADIUM	
M	EI PEACOCK & URN SAUCE,	40	P	EI GRAPE & CABLE POWDER JAR (N)	85
	5 1/2" (N)		M	EI HEARTS & FLOWERS COMPOTE	50
M	EI WREATH OF ROSES ROSE BOWL	45	PO	EI CAROLINE BOWL, 8", C/A/E	45
M	EI LITTLE FLOWERS SAUCE	15		HEAVY OPAL	
	CELEST BLUE FOWER FROG	10			

25

\*\* CARNIVAL GLASS FOR SALE \*\*

DICK HATSCHER, BOX 261, WALNUT HILL ROAD, BETHEL, CT 06801  
PHONE: (203) 743-1468

M	PEACOCK AT FOUNTAIN, 3 FID	\$125	M	MILLERSBURG DIAMOND 5 PC.	\$195
	FRUIT BOWL			WATER SET	
M	REEFS OF ROSE WINSY, VERY	195	G	FLUTE BOWL & BASE + 6 CUPS	245
	RARE (SEE PEACOCK FENION			1 CRACKED - RARE	
	BOOK, PG. 128		G	OCTAGON TUMBLER, RARE	245
P	HOMESTEAD PLATE	395	AO	FRUITS & FLOWER COMPOTE	350
R	PEACOCK AT URN COMPOTE	695	WHT	ORIENTAL POPPY PITCHER	1385
	VERY RARE			VERY RARE	
	ICE BLUE NORTHWOOD PEACOCK	950			
	ON FENCE PLATE				

DON CHAMBERLAIN, BOX 64, WINTHROP, IOWA 50682 PHONE: (319) 935-3925

M	ORANGE TREE MUG, NICE	18	B	ORANGE TREE MUG	30
G	THREE FRUITS 9" PLATE	78	G	TIGER LILY TUMBLER, HARD	15
	(N) GOLD & SILVER IRID			TO FIND, CHIP	
M	STORK & RUSHES TUMBLER	13	M	SMOOTH RAYS OR INTERIOR RAYS	35
M	FLOWERING DILL HAT	23		WATER PITCHER	
M	MILLERSBURG FLUTE FRUIT BOWL	70	M	THREE BAND SOUVENIR MUG	35
	TOP ONLY			OF SANDWICH, N.H.	
				AME PILLLOW & SUNBURST 8" BOWL	20

CHARLOTTE TWEDELL, 4908 DARTON LANE, LOUISVILLE, KY 40216  
PHONE: (502) 447-1670

B	EI TEN MUMS TUMBLER	95	M	EI ACORN BURRS BOWL 5"	22
A	EI GRAPE & CABLE BOWL (N)	65	B	EI FENTONIA FOOTED BOWL	75
	8 1/2"			9 1/2"	
B	EI BUTTERFLY BERRY TUMBLER	45	M	EI GRACEFUL VASE	50
B	EI THISTLE BANANA BOWL	150	AMB	EI PINEAPPLE & BOWS BOWL	50
	SMALL CHIP ON COLLAR BASE			6 3/4"	



\*\* CARNIVAL GLASS FOR SALE \*\*

BARBARA BARKER, ROUTE 2, BOX 163 BB, SAVANNAH, MO 64485  
PHONE: (816) 662-2265

P GRAPE & CABLE - DRESSER TRAY \$175

GEORGIA MARTIN, 324 MAYLAWN AVENUE, WADSWORTH, OHIO 44281  
PHONE: 336-7383

GOOD COLOR - NO NICKS

DM MILK PITCHER - POINSETTIA 35  
M SUGAR & CREAMER LONG 20  
THUMBRINT SET  
M HAT STORK & RUSHES 22  
B ROSE BOWL FENTIONS 40  
LITTLE FLOWERS

50 M MILK PITCHER, STAR MEDALLION  
45 M 2 TUMBLERS, FLORAL & GRAPE, EACH  
BAND IN MIDDLE  
20 M MUG STORK & RUSHES  
55 W BOWL FLORAL & OPTEC 10"  
FOOTED, GOOD  
50 HOACGA WATER SET, COLOR GOOD

26

A. O. CROMER, 1150 NORTH TOPEKA, WICHITA, KS 67214

PHONE: (316) 262-1775

M EI RUFFLES BROOKLYN BRIDGE BOWL 200  
M TROUT & FLY PIE CRUST  
EDGE BOWL 100  
B PEACOCK AT URN COMPOTE 500  
B DETROIT ELK BOWL,  
RUFFLED, 1910 150  
A EI STEMMED ROSE BOWLS, 1 PAIR

400 A PEACOCK ON THE FENCE  
300 RUFFLED BOWL  
100 B PEACOCK AT URN BOWL,  
RUFFLED FENION  
500 B ATLANTIC CITY ELK BOWL, 1911  
375 G SHALLOW POSY & PODS BOWL, VARIENT  
200 A GRECIAN URNS, 1 PAIR VASES, RARE

BRUCE HILL, 943 S.E. 13TH AVENUE, FOREST LAKE, MN 55025

PHONE: (612) 464-3684

R FINE RIB VASE 450  
B HORSES HEADS ROSE BOWL 110  
P ACORN BURRS PUNCH CUPS:  
5 MATCHING, EACH 35  
OR 5 FOR 60  
VAS FENTON GRAPE & CABLE  
RUFFLED BOWL 300

225 R ORANGE TREE SHAVING MUG  
145 EB FRUITS & FLOWERS BON BON  
30 IB CONCAVE DIAMONDS TUMBLERS, EA.  
125 IB PASTEL PANELS TUMBLERS, EA.  
95 IB PASTEL PANELS LEMONADE PITCHER  
WITH COVER  
25 IB CONCAVE DIAMOND PITCHER, CRACKED

\*\* CARNIVAL GLASS FOR SALE \*\*

JOHN MIKKONEN, R.R. 1, BOX 474F, SHADOPTEE, MN. 55379  
PHONE: (612) 445-6098

P GRAPE & CABLE STIPPLED PLATE, SUPER \$195 \$100  
M MAPLE LEAF STEMMED ICE CREAM 10 135  
M BUTTERFLY & BERRY 7 PC. BERRY SET 240 150  
M MELODY TUMBLER 75 60  
M GRACEFUL 50 85

M HOLLY PLATE, SUPER  
B HOLLY PLATE, SUPER  
M IMP, GRAPE 7 PC. BERRY SET  
M FERN COMPOTE, NICE  
G OCTAGON TUMBLER, RIM CHIP

AL RETYKE, 14226 E. 143RD LANE, BURNSVILLE, MN 55337 PHONE: (612) 432-7489

RED HOLLY SHERBERT 380 M IMPERIAL GRAPE WATER SET 105  
SUPER COLOR 5 PIECE

LAVERN WHITE, 405 FIRST STREET, GRAFTON, IA 50440

PHONE: (515) 748-2923 AFTER 6:00 PM

A EI GRAPE & CABLE 75  
BREAKFAST SET 30  
M EI CHERRY CHAIN SM. DISH 50  
A EI FEATHERED SERPEANT BOWL 150  
RIBBON EDGE 60  
G EI WREATH ROSE COMPOTE 45  
A GI STAR OF DAVID BOWL 75  
PLEATED BASE

200 P EI BEADED SHELL MUG  
M EI ORANGE TREE MUG  
27.50 PO EI STIPPLED FLOWER BOWL  
60 B GI LITTLE FISHES FOOTED BOWL  
45 G EI MILLERSBURG BLACKBERRY WREATH  
75 6" BOWL

STERLING BUTZ, 221 N. ADAMS STREET, ALLENTOWN, PA 18104

A 7 1/2" BOWL, MILLERSBURG 75  
LITTLE STARS 50  
M 1 1/2" HEAVY GRAPE CHOP PLATE 90  
P 1 1/2" HEAVY GRAPE CHOP PLATE 135  
G GOOD LUCK BOWL 425  
M RADIUM 6 RUFFLES TROUT  
& FLY BOWL

70 A 9" GRAPE & CABLE PLATE  
G 8 1/2" MILLERSBURG BLAKCBERRY  
WREATH BOWL  
G MUG SINGING BIRDS (N)  
IB BOWL NIPPON  
PM HOMESTEAD PLATE

27



\*\* CARNIVAL GLASS FOR SALE \*\*

PHIL RAYMER, 33 HICKORY LANE, SAFETY HARBOR, FL 33572 PHONE: (813) 726-4612  
 M BLACKBERRY COMPOTE \$ 52 A BUTTERFLIES BON BON \$ 50  
 M DRAGON & LOTUS BOWL 9" 48 A FRUIT & FLOWERS BOWL 7 1/2" 32  
 P GRAPE & CABLE SHERBERT 50 M PEACOCK & DAHLIA BOWL 7" 50  
 M QUESTION MARK BON BON 38 G SINGING BIRDS TUMBLER 55  
 PO STIPPLED FLOWER 60 B WREATH OF ROSES COMPOTE 45

JACKIE TYLER, BOX 647, BALDWIN, WI 54002 PHONE: (715) 684-2397  
 G EI MILLERSBURG BLACKBERRY WREATH 45 G EI MILLERSBURG PEACOCK & URN 225  
 BOWL, RIBBON CANDY EDGE  
 EX. RADIUM FINISH  
 M GI BOUQUET TUMBLER 20 G GI LEAF & BEADS ROSEBOWL 65  
 B EI VINTAGE 7 1/2" PLATE 60 PO EI SKI STAR 10 1/2" BOWL 65  
 VIBRANT COLOR SUPER COLOR, LOTS OF OPAL  
 B GI (N) BUSHELL BASKET 50 G EI MILLERSBURG PRIMROSE BOWL 65  
 B EI WATERLILY SMALL BERRY 25 P EI (N) RASPBERRY 5 PC. WATER SET 375  
 BOWLS/ HAVE 2 FANTASTIC COLOR & IRR 375

DICK WETHERBEE, 847 STAFFORD STREET, ROCHDALE, MA 01542  
 PHONE: (617) 892-4420  
 BL EI FINE RIB 10 1/2" VASE, 13  
 VERY PRETTY  
 BL EI GRAPE DELIGHT 6 FOOTED 95 P EI THREE FRUITS 9" PLATE 110  
 NUT BOWL - PERFECT FEET W/BASKETWEAVE (N) SUPER  
 PO EI PEARLY DOTS COMPOTE 80 M EI MARY ANN 6 1/2" VASE 48  
 RARE WESTMORELAND PIECE P EI LEAF & BEADS 3 FTD. 48  
 M EI BUTTERFLY & BERRY TUMBLER 20 NUT BOWL -GORGEOUS  
 G EI PANSY SPRAY 5 1/2" NAPPY 18 M EI THREE FRUITS STIPPLED 45  
 8 1/2" BOWL

\*\* CARNIVAL GLASS FOR SALE \*\*

R. H. ASHMORE, JR., 6150 CRITTENDEN AVENUE, INDIANAPOLIS, IN 46220  
 PHONE: (317) 255-3949  
 A TOP FOR ORANGE TREE POWDER JAR \$ 25

DICK WETHERBEE, 847 STAFFORD STREET, ROCHDALE, MA 01542  
 PHONE: (617) 892-4420  
 PO GI DAISY & FLUME 3 FTD. BOWL 65 B EI PERSIAN MEDALLION 9" FLARED 68  
 OBLONG SHAPE BOWL - RARE COLOR BOWL - A BEAUTY  
 PO EI FAN SAUCEBOAT - FEET 95 P EI GOOD LUCK, 9" FLUTED BOWL 135  
 ABSOLUTELY MINT + SUPER  
 G EI FINE CUT & ROSES, 3 FTD 55 M EI PERSIAN MEDALLION 6 1/2" 28  
 7" FLARED BOWL - PERFECT SMALL PLATE  
 M EI OCTAGON WINE DECANTER 65 P EI BLACKBERRY WREATH 8 3/4" BOWL 65  
 DARK MARIGOLD  
 M EI LEAF & BEADS 3 FTD. NUT 32 P EI JEWEL HEART 6" RUFFLED BOWL 42  
 BOWL - GORGEOUS VERY NICE

NOTE: DUE TO AN OVERSIGHT LAST MONTH MR. WETHERBEE'S AD DID NOT APPEAR SO WE ARE PRINTING BOTH ADS IN THIS ISSUE.

DUE TO LATENESS OF ARRIVAL LAST MONTH, MR. HENDERSON ALSO HAD TWO ENTRIES IN LAST MONTHS ISSUE.

\*\* CARNIVAL GLASS WANTED \*\*

MARY ANN MORIARTY, 806 CENTRAL AVENUE, BEDFORD, IA PHONE: (712) 523-3469  
 A GRAPE & CABLE SWEETMEAT LID M BUTTERFLY & BERRY FOOTED SAUCE (2)



\*\* CARNIVAL GLASS WANTED \*\*

M FASHION TUMBLERS - UP TO SIX (REASONABLE)  
LEE BRYANT, R. #1, BOX 109, DECATUR, IN 46733

TED SHEIBLEY, 304A HILLCREST DRIVE, NEW CUMBERLAND, PA 17070  
PHONE: (717) 938-6417

ANY STIPPLED PLATES  
MAR GRAPE & CABLE BUTTER BASE  
OR WILL SELL TOP  
PUR PEACOCK AT THE FOUNTAIN  
SUGAR BASE OR WILL SELL LID

ANY PEACOCK ON FENCE PLATES  
MAR ORANGE TREE POWDER JAR LID  
OR WILL SELL BASE  
MAR SPRINGTIME SUGAR LID  
OR WILL SELL BASE

B. R. FRELLWITZ, 3204 - 18TH AVENUE SOUTH, GREAT FALLS, MT. 59405  
PHONE: (406) 727-4235

G WREATH OF ROSES PUNCH CUPS, GRAPE INTERIOR M OPEN ROSE CREAMER, SUGAR, BERRY SET  
M ANY OPEN ROSE PATTERN

BRUCE HILL, 943 S.E. 13TH AVENUE, FOREST LAKE, MN 55025  
PHONE: (612) 464-3684

IG PEACOCK AT FOUNTAIN PUNCH CUPS  
P GRAPE & CABLE CRACKER JAR BOTTOM

B BUTTERFLY & FERN TUMBLER

BURNEY TALLEY, 1814 SLATE NW, ALBUQUERQUE, NM 87104 PHONE: (505) 242-1261  
B STRAWBERRY SCROLL TUMBLER (S) WITH SUPER COLOR

BARBARA NELSON, RED #4, BOX 155, LACONIA, NH 03246 PHONE: (603) 293-7246  
M G HEARTS & FLOWERS BOWL

A. C. DICKEY, 144 CHANDLER STREET, VACAVILLE, CA 95688  
P SPRINGTIME TUMBLERS (NEED 4 EACH)  
P GRAPE & CABLE TUMBLERS, STIPPLED  
W WREATH CHERRY WITH RED CHERRIES TUMBLER  
G FEATHER & HEART TUMBLER  
G INVERTED FEATHER & HOBBSTAR TUMBLER  
G STRAWBERRY SCROLL TUMBLER

P INVERTED THISTLE TUMBLER  
W BLACKBERRY BLOCH TUMBLER  
B GRAPE ARBOR TUMBLER  
1B ORIENTAL POPPY WITH INTERIOR RIBS  
TUMBLER

\*\*\* 1985 HOACGA SOUVENIRS \*\*\*

The HOACGA has chosen a carnival glass bell, featuring a portrait of HARRY NORTHWOOD, as our 1985 souvenir. Northwood's portrait will be a part of the mold work and was made from a portrait of his during the time he was heavily engaged in the production of carnival glass. The beautiful Circle Scroll pattern will be used for the balance of the bell. The color will be in red with the HOACGA logo and date on the inside of the bell. It will also have the Fenton trademark.

This will be the first of a planned series that will honor the makers of our well-loved carnival glass. In 1986 we plan on a bell using the portrait of FRANK L. FENTON, one of the founders of the Fenton Art Glass Company. We also plan on following with JOHN FENTON of the Millersburg Glass Company in 1987 and on to Imperial, etc.

We think that this souvenir will make a beautiful and very collectable piece of carnival glass and will also honor those responsible for the making of our favorite glass. We hope that you will be as excited about these souvenirs as we are and that you will get your orders in as soon as possible. MEMBERS MAY ORDER AS MANY AS THEY WISH UNTIL STOCK DEPLETED. THE PRICE IS \$35 FOR EACH BELL plus \$2.50 for Postage and Insurance. (If you plan to pick these up at the convention, omit the postage)

MAKE CHECKS PAYABLE TO: HOACGA  
MAIL REMITTANCE TO: MR. JOHN BRITT  
3048 TAMARAK DRIVE  
MANHATTAN, KANSAS 66502



I wish to order \_\_\_\_\_ 1985 Souvenir Bells at \$35. Add \$2.50 Shipping Cost

NAME: \_\_\_\_\_

ADDRESS: \_\_\_\_\_

CITY, STATE, ZIP: \_\_\_\_\_

Will pick up at Convention \_\_\_\_\_ Please Ship \_\_\_\_\_



APPLICATION FOR MEMBERSHIP

THE HEART OF AMERICA CARNIVAL GLASS ASSOCIATION, INC.

DATE \_\_\_\_\_

NAME \_\_\_\_\_

SPOUSE \_\_\_\_\_

ADDRESS \_\_\_\_\_

CITY \_\_\_\_\_ STATE \_\_\_\_\_

ZIP CODE \_\_\_\_\_ TELEPHONE \_\_\_\_\_

RECOMMENDED BY \_\_\_\_\_

Do you want your name in the directory? YES \_\_\_\_\_ NO \_\_\_\_\_

DUES ARE \$20 U.S. PER YEAR (JUNE TO MAY - With Back Issues On Request)

SEND DUES TO: H.O.A.C.G.A.  
GLEN FORTNEY, SECRETARY  
P. O. BOX 303  
BUCKNER, MO 64016

A FEW OF THE BENEFITS OUR CLUB OFFERS:

The ONLY MONTHLY PUBLICATION on just Carnival Glass Collecting, keeping you informed of new discoveries and all of the current events. Members only may advertise, FREE OF CHARGE!!!

An exclusive PATTERN NOTEBOOK with yearly special inserts (ALL inserts are still available)

ANNUAL SOUVENIR AND CONVENTION WITH SOME OF THE GREATEST PEOPLE YOU CAN HOPE TO MEET!!!

<<<< JOIN TODAY >>>>