

Heart of America

Carnival Glass Association, INC.

NEWSLETTER

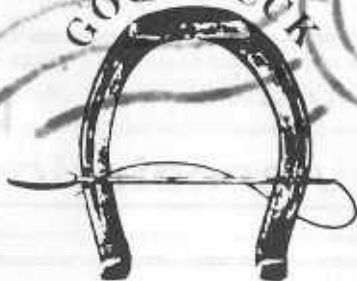
SEPTEMBER 1985

PLEASE SEND ALL CHECKS TO:
GLEN FORNEY, SECRETARY

ALL MATERIAL FOR THE BULLETIN
SEND TO BULLETIN SECRETARY:

MARGE MILLER
7605 N. W. EASTSIDE DRIVE
KANSAS CITY, MO 64152

GOOD LUCK



**Heart of America
Carnival Glass
Association Inc.**

Membership June to May
\$20.00 Per Couple or Single

Published the 15th
of each month

PRESIDENT

Robert Grissom
7900 Crescent
Raytown, MO 64138
(816) 356-5320

VICE-PRESIDENT

Nadine Paulsen
700 Purdom
Olathe, KS 66061
(913) 782-1313

TREASURER

Karen Engel
35292 Oak View Drive
Brownsville, OR 97327
(503) 466-5989

SECRETARY

Glen Fortney
P. O. Box 303
Buckner, MO 64016

BULLETIN SECRETARY

Marge Miller
7605 N. W. Eastside Drive
Kansas City, MO 64152
(816) 741-4635

All monetary figures quoted are in U. S. dollars.
Please make checks for dues payable to H.O.A.C.G.A.
and send them to the secretary as listed above.

**** DO NOT SEND TO THE BULLETIN SECRETARY ****

H.O.A.C.G.A. AUGUST MONTHLY MEETING

At 2:00 p.m., August 25, 1985, the H.O.A.C.G.A. Monthly Meeting was called to order by President, Robert Grissom. The meeting was held at Raytown City Hall.

The minutes of the last meeting were read by Secretary, Glen Fortney and approved as read. The Treasurer's report, prepared by Karen Engle and read by President Bob Grissom, was approved as read and filed for audit.

A report on the Convention plans for next year was given and a contract has been signed with the Holiday Inn, Kansas City Southwest, 12601 West 95th Street, Lenexa, Kansas. The dates set are April 25-26-27, 1986. Room rates are \$50.00 per day up to four people. A table charge will be extra. If anyone has suggestions for programs or activities, please contact Charles or Eleanor Mochel.

The Vaughan's reported on attending the Pacific Northwest Convention. I am sure they had an exciting time.

Dorothy Taylor shared information she received on her visit to the Hay Shed at the Old Imperial Glass Factory. She reported several of the "old molds" are being sold to other companies all over the world. Reproductions of reproductions are being made. Old patterns are being made without the markings. If anyone wants any information on this, get in touch with Dorothy. We thank her for the information she has shared.

A break was taken for refreshments provided by Viola Shikles. We thank her for them. They were enjoyed by all.

After refreshments, and being no more business, there was a time of sharing Fenton Glass. The Mochel's led off with some of their beautiful and rare pieces - an Apple Green Tumbler in Blue (a beauty), a Strawberry Scroll Pitcher and Tumble in Blue (also a beauty), Thistle Plate in Amethyst, and some of the beautiful pieces in their collection which came from the Anderson's collection of New London, Iowa (which they sold about 12 years ago). Bob Grissom showed some nice pieces from his table sets. Charles Vaughn shared some of his Bon-Bons. Glen and Harold Fortney showed some of the nice Fenton pieces. Pauline Paulson showed a beautiful Orange Bowl. This all makes a very interesting meeting.

Meeting ajourned.

Glen Fortney, Secretary

SURPLUS MATERIAL CLOSEOUT

When the H.O.A.C.G.A. Notebook project started, 1,000 Notebooks were ordered and copies of each section have been printed. Each year the number of printed copies received has varied. We have excess copies of each section and due to storage problems, the excess copies are going to be destroyed.

If you need any of the sections for your Notebook, please send your order to **Glen Fortney, Secretary**. We want each Notebook holder to have an up-to-date book.

Approximately 50 Notebooks are still available at \$18.00 each plus \$4.00 shipping.

The sections on Punch Bowls, Mugs, Table Sets and the first Water Sets are available at no cost.

The next two sections on Water Sets are available at \$3.75 each.

The first section on Rose Bowls is available at \$4.00.

Please include \$1.00 for each section ordered.

Davis Shikles has already built a 12 x 12 storage building to store H.O.A.C.G.A.'s material and he says he isn't going to build another one. Kind of narrow minded of him I think.

Bob Grissom

FROM THE EDITOR

Last month I printed "First Two In A Series Of Nine" on an article from Don Moore. After reading it in the bulletin I realized it needed to be printed in its entirety so the September issue will carry the entire article.

Members, please bear with me. I have sent out three issues and apparently it takes time, and mistakes, to become a professional.

Marge Miller

PICTORIAL PATTERN PARADE

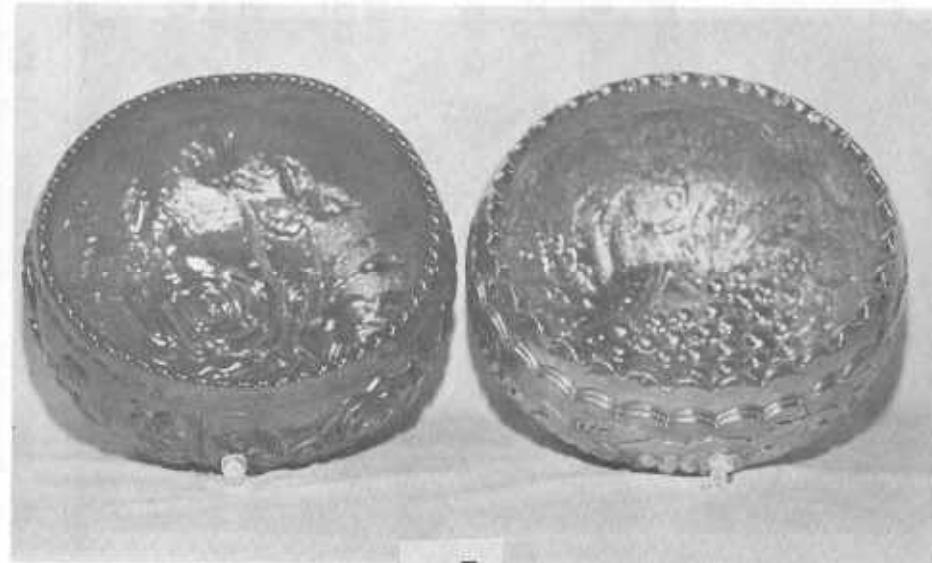
By John & Lucile Britt

IMPERIAL ROSE BOWLS IN RARE COLORS

We have found that the "Open Rose" rose bowl in purple, shown on the left, is a very hard rose bowl to locate. The deep purple color of this rose bowl reflects Imperial's super color and iridescence. I might add that the purple "Open Rose" flat plate is also very hard to locate. Besides the hard to find purple, I have seen these "Open Rose" rose bowls in amber, helios green, marigold, and in a sort of teal green color. It is quite possible that they might exist in clambroth and smoke, but we have never seen one in those colors.

The "Imperial Grape" rose bowl on the right is in amber. They have also been reported in marigold and green, but any rose bowl in this pattern is rather hard to find. Perhaps a purple one might exist - if so, it would be a great find. The purple "Imperial Grape" 9" flat plate does exist, but only rarely does one show up. The very few that I have seen had fantastic color and iridescence.

These two rose bowls are the exact example shown in the 1985 H.O.A.C.G.A. inserts on rose bowls. If you collect or like rose bowls, be sure to obtain these rose bowl inserts as they have a great coverage of patterns in beautiful color. The second half of the rose bowls will be in the 1986 inserts. We highly recommend these insert for their beauty and educational information.



EDUCATIONAL TUMBLER SERIES

By John & Lucile Britt

NORTHWOOD'S FLUTE IN GREEN AND MARIGOLD

Here we have a pattern where the Marigold Tumbler is quite common. On the other hand, the green example is extremely hard to find. Some ten years ago Helen Greguire, from New York state, found two of these "Northwood Flute" Tumblers in green. We were fortunate to be able to purchase one of these for our tumbler collection. These two green "Northwood Flute" Tumblers are the only ones that I have ever seen or heard of in that color. No doubt there are a few others out there somewhere but you can be sure that they are few and far between. I have also seen several of the "Northwood Flute" Tumblers that have the Cranberry "flashed on" type of iridescence. They add color to any tumbler collection but you will also find them rather difficult to find.

These "Northwood Flute" Tumblers contain the famous "N" in a circle trademark. They stand 4" high and the six panels or flutes move uninterrupted to the base which is patternless, recessed, and factory ground to make them set level on the table. The flared lip is quite pronounced, much more so than on other Northwood Tumblers. I believe these flute pieces were among some of Harry Northwood's earliest Carnival Glass productions.

This is #92 in this tumbler series. Next month we will feature a very pretty Heisey Pattern Tumbler that is known as "Sawtooth Bands."



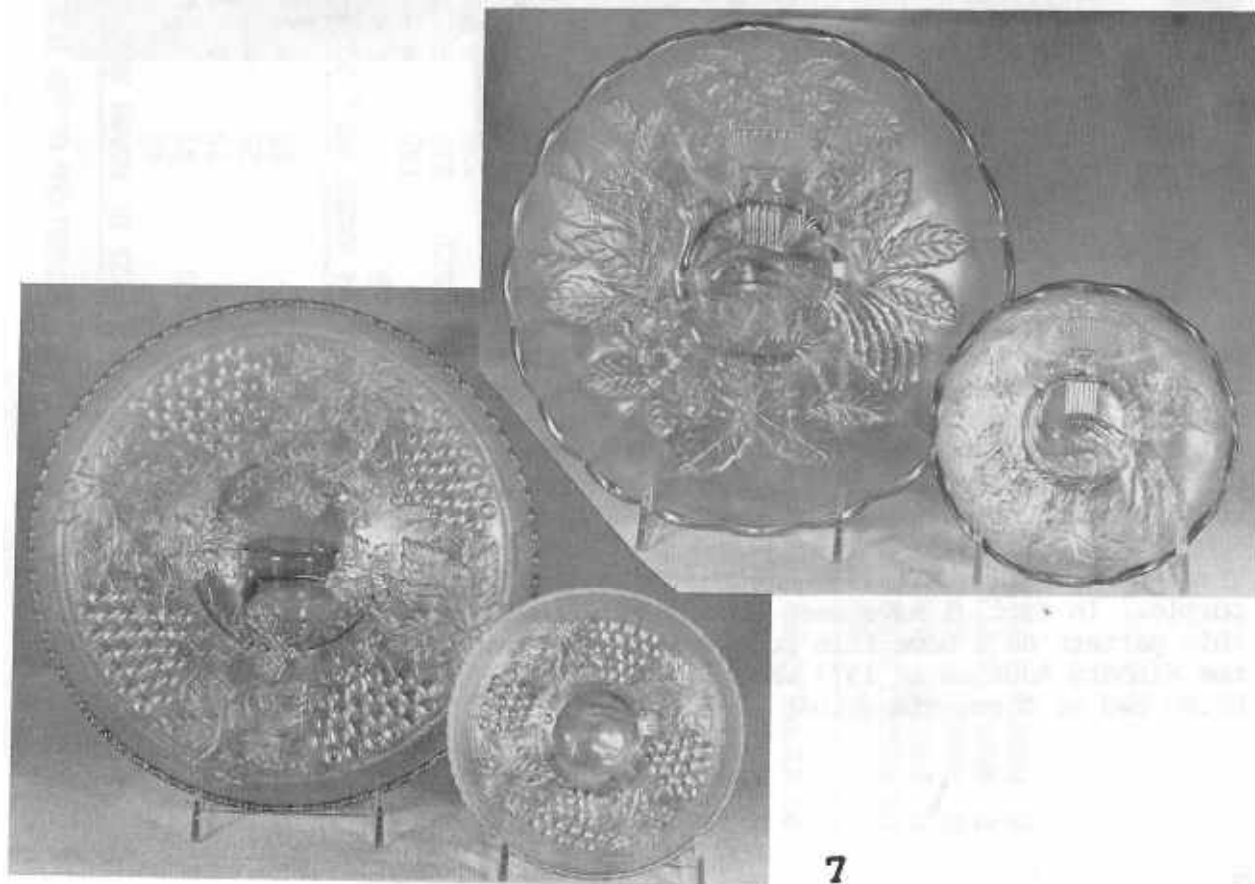
ICE CREAM BOWLS

By Donald Moore

It has become standard practice to call all round (non-ruffled) bowls, ice cream bowls. Except for Grape & Cable (Photo #1) and Peacock & Urn (both Northwood and Millersburg) - (Northwood shown in Photo #3), none of the other bowls are true ice cream bowls. They should be referred to as ice cream shapes. Even then we are taking liberties as most of them are too deep to qualify. A true ice cream bowl is on a collar base and comes out very flat from the center and then turns up sharply about an inch or so from the outer edge. The master ice cream bowl will measure from 10" to 11" while the individual bowls will run some 5 1/2" to 6".

#1 - ICE BLUE GRAPE & CABLE

#2 - ICE BLUE NORTHWOOD PEACOCK & URN



#3 - SEAWEED

#4 - GARDEN PATH, VAR.



Certain pieces are very rare in the ice cream bowl shapes. The Millersburg Seaweed pieces in Photo #3 are good examples. I can confirm only three of the master bowls and two of the little individual pieces. It is very doubtful these were ever designed and sold as ice cream sets or more of them would have turned up. The marigold master (shown here) sold for \$300 at the Carroll Auction in September of 1983. One rare blue one sold for \$900 at the Garner Auction in May of 1983. The small bowl is amethyst. It sold at the Wilson Auction in 1982 for \$450.

The Dugan Garden Path, Var. (Photo #4) master bowl is seldom seen in purple. In fact, I have seen about as many of the rare chop plates in this pattern as I have this purple ice cream bowl shape. It came out of the Wishard Auction in 1977 where it sold for \$210. I'm sure it would bring two or three times that much in today's Carnival market.

I have always wondered if we are correct in calling any of these bowls or sets "ice cream" pieces - even the Grape & Cable or Peacock & Urn. I've never understood the need for a master ice cream bowl. When we made ice cream on the farm in Iowa, we weren't about to waste time dipping it into a serving bowl. We dipped directly from the freezer. I have been told, however, that in the city they sold bulk ice cream from horse drawn wagons. That might explain the need for the master bowl, but we farm boys wouldn't know about such things.

This ice cream bowl terminology is not used anywhere in the old Butler Brothers Catalogs. Neither the Grape & Cable nor the Peacock & Urn are shown, but the other bowls we now refer to as ice cream bowl shapes are called berry bowls, fruit bowls, or salad bowls. Just where the "ice cream" tag came from is uncertain.

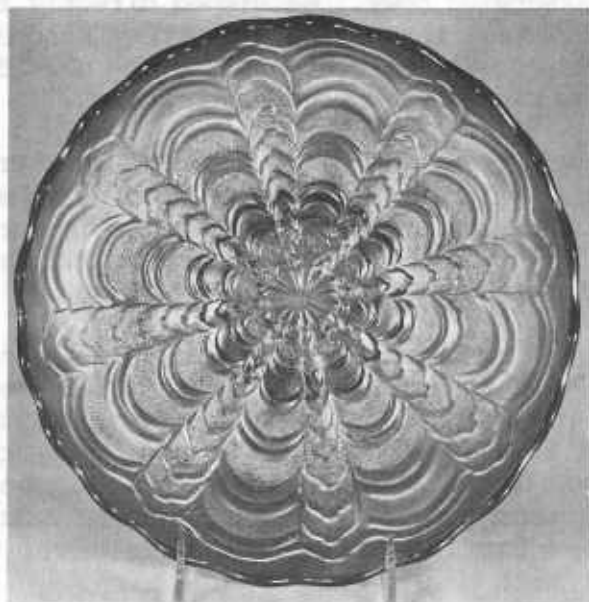
When Mrs. Hartung came out with her Book 4, she included a section on Grape & Cable. In it she says, "Mention should be made of rare size and shape of bowl" and goes on to describe the 11" master ice cream bowl. She does not give it a name however. To add to the confusion, she shows the small stemmed Grape & Cable sherbet or compote shaped piece and calls it an "ice cream dish." She says, "these actually came in sets and were intended for ice cream." I have never seen or heard of a master bowl to go with this piece.

Despite the confusion surrounding ice cream bowls, we are locked into the terminology we now use and should accept it. Let's take a look at a few of these ice cream bowl shapes.

#5 - DUGAN HEAVY GRAPE



6 - ROSALIND



Another rare ice cream bowl shape is the Purple Dugan Heavy Grape (Photo #5). It measures 11" and is the only one I've seen in this shape. Two or three small bowls are known in this pattern but they are all ruffled. This master bowl was sold to John Britt by Shadow Hills Antique in 1973. When John broke up his original collection the following year, he sold it to me for the \$495 he had paid for it earlier. (I had missed it by about 10 minutes when John bought it from the Shadow Hills Antique Carnival List.) Annette Zwirn of Shadow Hills in Los Angeles handled some of the rarest of Carnival pieces.

Still another rare ice cream bowl shape is the Millersburg Rosalind (Photo #6). This bowl is almost always ruffled. The 10" master bowl in the photo is green. It is one of only 3 or 4 that are known in the ice cream bowl shape. While very rare, I'm not sure they would sell for any great amount more than the standard bowl. The 2 or 3 small bowls in this pattern are ruffled. They are considered extremely rare and the only one I have seen sold brought \$255 at the Wilson Auction in 1982. It was also green. I remember the details quite well as I have not been permitted to attend an auction alone since that time.

8 1/2" - 9" ICE CREAM BOWL SHAPES

Thus far we have concentrated on the larger 10" to 11" bowls. The ice cream bowl shape was also used extensively by some companies on their standard 8 1/2" to 9" bowls. Fenton, for example, used it with all of their more popular patterns such as Orange Tree (Photo #7), Holly, Peacock & Urn, Dragon & Lotus, Vintage, Peacock & Grape, etc. Millersburg also used this shape on their Trout & Fly (Photo #8), Many Stars, Courthouse, Mystery Peacock, Blackberry, Wreath, etc. Dugan & Westmoreland also used this shape on many patterns. These companies seemed to alternate this ice cream bowl shape with the more standard 8" ruffle shape.

Perhaps the most interesting thing to come out of this article is the fact Northwood did not use the ice cream bowl shape on their 8 1/2" to 9" bowls. Please correct me if I am wrong on this - but I can't confirm any shape other than ruffled or pie crust edges on any of their more popular patterns such as Three Fruits, Peacock on the Fence, Good Luck, Hearts & Flowers, Embroidered Mums, Strawberry, Greek Key, and Nippon. To be sure, Northwood used the ice cream bowl shape on their larger 10" to 11" bowls but why they didn't do the same on these smaller bowls is indeed a mystery. I've never been completely convinced that the Rose Show & Poppy Show were Northwood but the fact these bowls are not found in the ice cream bowl shape might be good evidence they were made by this company.



#7 - FENTON'S ORANGE TREE



#8 - MILLERSBURG'S TROUT & FLY

Some Northwood pieces pop up now and then to surprise us. Nearly all of the advertising pieces are either plates, hand-grip plates or ruffled bowls. A few turn up in the ice cream bowl shape such as the Sterling Furniture Company piece (Photo #9). I have two others in this shape - Geruvtz Furniture Company and Central Shoe Store. I'm sure there are others.

Well, that's about it. Try to sort it all out if you can while I have a bowl of ice cream.

#9 - STERLING FURNITURE



CARNIVAL GLASS AUCTION PRICE REPORT

The only Edition presently available is the 1984 printing which includes results from 1983 auctions. It costs \$8 US postpaid.

We are unsure if we are going to print another, but if we do, the very earliest it would be available would be May, 1986.

If we do print another issue, it will be advertised in the various Carnival Glass Club's Newsletters.

Al & Wendy Rettke
14226 East 143rd Lane
Burnsville, MN 55337

RARITIES AND SELDOM SEEN

By Ivan & Betty Mitchell

RED CHERRY CHAIN BON-BON FENTON

This is one of our favorite pieces of Carnival Glass. This Red Bon-Bon is unsurpassed for color and beauty, in its field.

In Don Moore's Book on Rarities, it is rated as tenth in value. He states that "Red is one of the rarest and most sought after of all Carnival Glass", and I sure agree.

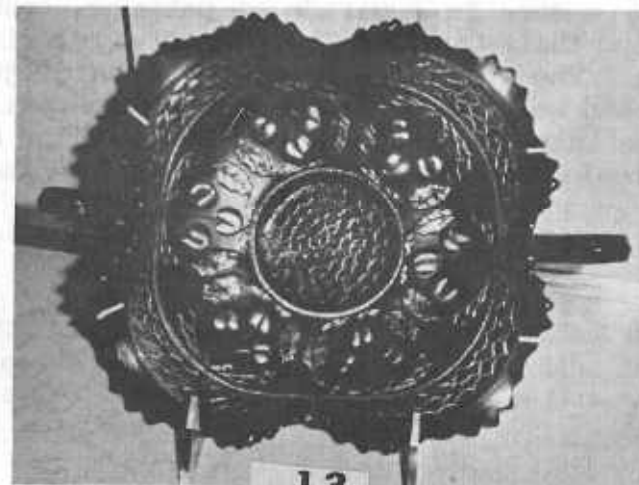
I would rate this Bon-Bon as very rare. There are but very few of these known. It is one of the largest Bon-Bons known with the exception of the Tracery Bon-Bon which is about the same size, maybe a trifle larger. This Cherry Chain is 9 1/2" from the outer most part of the handles and 7 1/4" wide.

Worth of this is approximately \$1700.00 and they are mighty hard to come by.

Fenton controlled the red market, with a few pieces made by Imperial, mainly the Luster Rose.

The colors in this pattern are marigold, cobalt blue, green, amethyst, white and red, but not all colors in all patterns.

All in all, I would say this is a "Top of the Mountain" piece of Carnival Glass.



**12TH ANNUAL CONVENTION OF THE
PACIFIC NORTHWEST CARNIVAL GLASS CLUB**

The 12th Annual Convention of the Pacific Northwest Carnival Glass Club welcomed several members from the Midwest and East including Charles & Anna Belle Vaughn, Merle & Connie Richardson, John & LeVeta Woody and family, Steve Morrow, Tom Burns, along with members from Canada, Washington, California, and Oregon.

Our Convention began with our 3rd Annual Salmon BBQ-Potluck Picnic at a nearby park with almost 100 in attendance.

Friday morning our business meeting included election of officers as follows:

President	Karen Engel
Vice-President	Lynn Lewis
Secretary	Norma Uusitalo
Treasurer	Patsy Garcia
Bulletin Editor Pro-Tem	Donna Baker

Friday's Buffet Luncheon was enjoyed by 116 members which featured Don Moore and John Woody combining efforts centered around a beautiful display of glass purchased at various Woody Auctions including the Aqua Opalescent Acorn Burr Punch Set from the Marion Hartung Estate Auction. Don and John put on a fantastic program talking about some of the glass displayed, auction procedures, various auctions, and auction prices.

Friday evening we had our first Carnival Glass Costume Party. Members were encouraged to come in a parade of patterns, costumes of the the 20's, 30's, wearing their Carnival Glass Jewelry, carrying their Beaded Carnival Purses. The theme was open, as we said 'just get into the carnival spirit' and we'll have a great time and we did!!! We moved our hospitality room into the Holidome and music of the Big Band Era was provided for listening and dancing by a group called "The Variations."

Some auction prices realized from the P.N.W.C.G.C. - John Woody, Auctioneer.

M Absentee Dragon & Strawberry Plate	\$1900	R Leaf Chain Bowls	\$500/\$250
B Plaid Bowl	\$ 100	R Fine Rib Vase	\$200
B Poinsettia Bowl	\$ 150	R Grape & Cable Bowl	\$500
		G Holly Plate	\$110

Aqua Panther 5" Bowl	\$ 225	IB Three Fruits Bowl	\$600
Smoke Imperial Grape Wine Decanter	\$ 100	P Lg. Kiwi Bowl	\$180
Ib "N" Petals Compote	\$ 850	P Emu 5-Piece Berry Set	\$200
B "N" Grape Leaves Bowl	\$ 130	M Kookaburra VT IC Shape Bowl	\$150
Amethyst Detroit Elk Bowl	\$ 350	P Kookaburra Vt IC Shape Bowl	\$225
IG "N" Peacock & Urn Ice Cream Bowl	\$ 600	PO Dugan Cherry Bowls	\$250/225
M Kittens Plate	\$ 100		

Saturday evening we had 120 in attendance at our banquet featuring Marie Capps as our guest speaker which was yet another treat. Marie had brought a table of her pastel rarities as part of her program.

Sincerely, Karen Engel

AIR CAPITAL CARNIVAL GLASS CLUB

Our convention plans are progressing very well.

We are happy to announce that Mr. Al Rodenhouse will be our banquet speaker. He will speak on tumblers and you will not want to miss this one!

Tom Burns has a very good auction lined up for us. From a sneak preview of the partial list it will be a nice one with some very nice water pitchers and plates.

If you have not received information on the convention, and would like to attend, please contact the Secretary, Donald Kime, 1202 W. 4th Street, Haysville, Kansas, 67060, Phone: (316) 524-3123. The date for the convention is October 18-19-20.

Friday afternoon you will want to attend the special program presented by Christ and Ethel Harnish of Pennsylvania. After the program you will want to visit the hospitality room.

Donald E. Kime
Secretary

SOUTH CALIFORNIA CARNIVAL GLASS CLUB

South California Carnival Glass Club met for their quarterly meeting in Huntington Beach, California, August 18. Fifty members and guests enjoyed smorgasbord lunch and an educational meeting on Summer Flowers, Poppy Shows, Rose Shows, Daisies of several varieties, Wild Roses, Pansies, Irises', flower patterns on peach opal glass and even a large assortment of flower arranger frogs were discussed. Rusti Shupert, Charles Adams, and the couples Lemieux, Patterson, Sponsler, Arsenault, and Fry brought beautiful glass for the program.

Dee and Michael Sponsler were hosts for this meeting and very graciously contributed cut floral arrangements including Protea bloom for table centerpieces and then all seven were raffled off. Lucky winners were: Cheryl De Boe, Shirley Patterson, David Deem, Camille Deem, Bill Light, Angie Cash, and Dick Clark.

Carnival Glass door prizes was won by Angie Cash. She also won a carnival raffle prize. Roberta Strachen won the other two raffle prizes, also carnival glass.

Wally McDaniel came down from Grass Valley, California, for the meeting and brought along some very nice glass for sale. Six other members brought sale glass and each sold to happy buyers.

Valerie Light gave an informative report on a good Pacific Northwest Convention. She and Bill enjoyed themselves. She said Marie Capps display of pastels was breath-taking and the Woody Auction was well received. There were 118 registered for the 3-day convention August 8-10.

Our next meeting date is November 17 when Helen Ouellette will present a program on Red Carnival Glass to welcome the approaching holiday season.

Submitted by: Diane Fry, San Diego, California

TEXAS CARNIVAL GLASS CLUB

Members of the Texas Carnival Glass Club gathered in Waco, Texas on Saturday, August 17, at the Ramada Inn.

After spending the day visiting flea markets and antique shops, everyone met at 6:30 P.M. and went in a group to a nearby Greek Restaurant for

dinner. Jack and Eleanor Hamilton had made arrangements for a private dinning room and there were 30 members attending. After returning to the Motel, everyone enjoyed visiting in the rooms and around the pool.

The business meeting was called to order by President Arlen Merritt at 9:30 A.M. on Sunday. A committee was appointed to make plans for the Club's Seventh Anniversary Meeting to be held in February. John and Lucile Britt will present the program. Time and place will be announced later.

Members brought compote, whimsys, and other interesting pieces for Show and Tell. The meeting was adjourned at 11:30 for a buffet lunch and social hour.

We were happy to have Iris and Chester Herring back for the first time since Iris had back surgery several months ago.

Jane Brown, Secretary

Next month's meeting, a picnic at 12:30, will be held at Weatherby Lake at "C" Point. Directions are as follows:

I-29 North toward K.C.I. Airport. Exit Barry Road West to Eastside Drive. (If you see the Lake from Barry Road - you have gone too far). South (left) on Eastside Drive to 77th Terrace. Right to "C" Point.

Bring covered dish and table service.



SEPTEMBER 6-8 -3RD ANNUAL CONVENTION, NEW ENGLAND CARNIVAL GLASS ASSOCIATION, Quality Inn, Chicopee, Mass. Sunday Auction. For more information contact Howard Robinson, Convention Chairman, (413) 536-4319.

OCTOBER 11-13 -2ND ANNUAL CONVENTION, CANADIAN CARNIVAL GLASS CLUB. George Loescher, Banquet Speaker on Saturday, Auction Sunday, I.D. Clinic & more, Conestoga Inn, Kitchener, Ontario. For information contact: Janet Knechtel, P.O. Box 3023, Kitchener, Ontario N2G 4R5.

OCTOBER 18-20 - CONVENTION of THE AIR CAPITOL CARNIVAL GLASS CLUB Airport Sheraton Inn, 5500 W. Kellogg, Wichita, KS (I-235 & US 54 West). Contact Don Kime, 1202 West 4th, Haysville, KS 67060.

A NOTE FROM THE ANDERSONS

We are unable to go to shows, conventions, etc. My husband is 86 years old and I will be 83 in August. We have had to give up buying and selling. No one has enjoyed it more than us.

We spent 25 winters in Florida. We went to shows and shops all over the place.

We do have some Carnival but not a full line. We had joined all of the Associations and have quit all but H.O.A.C.G.A. We know people all over the U.S.A. - so many wonderful people. Wish we could be more active.

We enjoy the information the club puts out.

Sincerely, Mrs. Raymond Anderson, New London, Iowa

LOOKING FOR THAT RARITY

Dear Marge:

For years I have dreamed of making a whirlwind trip through the Midwest in search of Carnival Glass and other interesting antiques. Finally, this summer, I got the chance to realize my dream and attend my 25th High School Reunion, too.

Sioux City, Iowa was home base for this trip and I visited nearly all the antique shops in the city. Saw pretty glass, none too unusual, and met lots of friendly people. The "prettiest" piece of Carnival that I found was a Blue Stag and Holly Bowl and the "rarest" was a "Red Leaf & Beads Bowl." I did not venture a fair offer on this amethyst piece of Carnival. The owner would never have come down that far in price. I visited with H.O.A.C.G.A. member Sheryl Brosamle in her shop for a short time and while there, experienced my first daytime lightening and thunder storm in 20 years.

The highlight of my Iowa whirlwind was a visit to the home of Ray Hitchcock in Winterset, Iowa. Ray and his wife, Rae Ann, have a beautiful collection of Carnival Glass. Especially nice is their collection of Holly Plates in most of the Carnival Colors.

Found a treasure on my return to California though! An Aqua Opal Three Fruits Bowl with outstanding iridescence and lots of opalescence. The owner got it free from a lady for helping her clean out her garage! I almost begged to buy the bowl, but it is "not for sale." Just my luck. So typical of my summer whirlwind! Maybe next time.....

Cordially, Judy Kasper

LAYING DOWN THE LAW

"Gentlemen," intoned the president of a large company which had just bought out a smaller firm, "I am delighted to be able to meet you, and to welcome you to our new and larger organization. I want you to know that I am a modest person. I am perfectly willing to acknowledge to you here and now that I may not always be right - but, on the other hand, remember that I am also never wrong."

** CARNIVAL GLASS FOR SALE **

A. G. MAGAN, 2533 FARRIER FL., OWENSBORO, KY 42301 PHONE: (502) 683-4508
 EB GOOD LUCK BOWL PC EDGE 250 G GRAPE & CABLE HATPIN HOLDER 175
 A GRAPE & CABLE HATPIN HOLDER 160 G 474 TUMBLER (RARE) 500
 W 7" GARDEN PATH VARIANT PLATE 500 A THREE FRUITS PLATE B W BACK 135
 M 6" PERSION GARDEN PLATE 75 G BUTTERMILK GOBLET 35

RICHARD FENTON, 1356 MEADOWLAWN DR., MACEDONIA, OH 44056 (216) 467-3399
 AO GI HEARTS & FLOWERS COMPOTE 240 GREEN EI HOLLY SPRIG CARD TRAY 68
 M EI KITTENS TOOTH PICK 125 A EI BUTTERFLY & BERRY CREAMER 110
 B GI ORANGE TREE BREAKFAST CREAMER 159 TEAL EI WATER LILY FTD BERRY BOWL 68

BRUCE HILL, 943 S.E. 13th AVE., FOREST LAKE, MN 55025 PHONE: (612) 464-3684
 R EI DRAGON & LOTUS ICE CREAM SHAPED BOWL 550 IG EI N PEACOCKS RUFFLED BOWL (NO HARM FLAKE BEHIND 1 POINT) 225
 AO EI DRAPERY ROSE BOWL 225 W EI FENTON PEACOCKS PLATE 185
 M EI ORANGE TREE LOVING CUP 140 EI PURPLE TWO FLOWER ROSE BOWL 275
 M EI ORANGE TREE GOBLET 25 SUPER INSIDE & OUT
 M EI LILY OF THE VALLEY TUMBLER 425 EI PURPLE CHATELAINNE TUMBLER 275
 EI PURPLE SINGING BIRDS TUMBLER 4 EA 48 SUPER

JAMES & JUDY KEY, RT 1, BOX 153-B, MARIANNA, AR 72360 PHONE: (501) 295-6770
 P EI WILD STRAWBERRY 8" WILDGRIP PLATE 125 G EI GRAPE & CABLE ADV. OLD ROSE 200
 P EI GRAPE & CABLE SHERBERT 35 DISTILLERY PLATE 85
 M EI HEART & VINE ADV. PLATE SPECTORS DEP. STORE 350 B EI PINE CONE 6" PLATE
 P EI STRAWBERRY 8 1/2" BOWL 45 WILL TRADE THE ABOVE PLATES FOR ONES I DO NOT HAVE
 M EI KITTEN CUP & SAUCER 190 B EI ORANGE TREE CREAMER & SUGAR PR. 90
 P EI FRUITS & FLOWERS 6" BOWL 40 M GI KITTEN FOUR SIDED BOWL 85

BARBARA NELSON, RFD 4, BOX 155, LACONIA, NH 03246 PHONE: (603) 293-7246
 LARGE SASE FOR 40 PC LIST OF CARNIVAL FOR SALE

** CARNIVAL GLASS FOR SALE **

NAOMI CALKINS, 1014 SEDEVA ST., CLEARWATER, FL 33515 PHONE: (813) 447-2962
 G EI GRAPE & CABLE N 5" BERRY DISHES, 5 EA 30 G EI GRAPE & CABLE N TUMBLERS 4 EA 50
 G EI FINE CUT & ROSES, ROSEBOWL 55 CREAMER DAMAGED 400
 G EI BIRDS & CHERRIES BON BON 50 G EI WREATH OF ROSES, STEMMED BON BON 38
 G EI HEAVEY GRAPE 8" PLATE 65 G EI PANNELLED DANDELION TUMBLER 50
 G EI BUTTERFLY & FERN TUMBLER 40 G EI BEADS 8" BOWL, BEAUTIFUL 50

AL & WENDY RETTKE, 14226 EAST 143rd LANE, BURNSVILLE, MN 55337
 PHONE: (612) 432-7489

GREEN LOTUS & GRAPE 9" PLATE, SUPERIOR IRIDESCENCE 325
 BLUE PEACOCKS ON FENCE PIECRUST EDGE STIPPLED BOWL 220
 RED HOLLY GOBLET 315
 ICE BLUE GRAPE & CABLE POWDER JAR BOTTOM 130

WES & BETTY STRAIN, 832 CARSON ROAD, FERGUSON, MO 63135 (314) 524-5608
 G AI GRAPE & CABLE FTD PLATE 75 M EI ORANGE TREE BASE TO PUNCH BOWL 25
 G EI INVERTED STRAWBERRY POWDER JAR NO LID (RARE) 80 M EI BEADED CABLE CANDYDISH SCARCE 30
 G EI PLAID BOWL (SCARCE) 110 P GI GRAPE & CABLE HATPIN HOLDER 175
 G GI SAILBOATS SAUCE (RARE) 95 M EI FISHERMANS MUG 200
 B EI ORANGE TREE POWDER JAR NO LID (CHIPS) 400 W EI MINIATURE BLACKBERRY COMPOTE 25
 25

DICK WETHERBEE, 847 STAFFORD ST., ROCHDALE, MA 01542 (617) 892-4420
 M EI GRAPE & CABLE 7 3/4" BOWL HAS LT. GREEN BASE 28 PO EI DUGAN'S INDENTED SWIRL 6" VASE 75
 EI CARNIVAL BUTTON 5/8 DIAMETER PINWHEEL & PRETTY 2.50 G EI FENTON'S HOLLY SPRIG BOWL 48
 P EI WREATH CHERRY SMALL OVAL BERRY DISH 45 IG EI PASTEL SWAN SALT 25
 PO EI CAROLINE/RAYS INSIDE 9" FLUTED BOWL 55 M EI OPEN LACE BASKETWEAVE 6" DISH 25
 SEND SASE FOR 100 PLUS PIECE LIST P EI FRUITS & FLOWERS 6" RUFFLED SAUCE DISH 35

** CARNIVAL GLASS FOR SALE **

M EI	PANTHER 5" BOWL	45	G EI	VINTAGE 8" BOWL	40
A EI	COIN DOT 8" BOWL	40	M EI	WATERLILY & CATTAIL 5" BOWL	25
M EI	GOOD LUCK 8" BOWL	75	M EI	THISTLE & THORN 6" FT. BOWL	40
ALEX KNEPPER, 3427 JACKSON, SIOUX CITY, IA 51104 PHONE: (712) 258-5671					
R	BLACKBERRY OPEN EDGE HAT	200	G	GRAPE & CABLE FT. PLATE	80
B	STRAWBERRY BON BON	25	W	DIAMOND & POINT VASE 6"	25
P	CIRCLE SCROLL SOUVENIR SINI SO DAKOTA				40

LARRY KEIG, 301 UNION ST., FAYETTE, IA 52142 (319) 425-4467 OR 425-5244					
B	CHERRY CIRCLES LG. BON BON	60	B	CHERRY CHAIN 6" RUFFLED BOWL	30
M	LEAF CHAIN/HORSE CHESTNUT 7" BOWL	25	A	SCALES (WESTMORELAND) 6" PLATE	25
M	BLACKBERRY WREATH 6" RUFFLED BOWL, RADIUM (VERY NICE)	30	M	POND LILY (EXT) BON BON	25
M	ORANGE TREE 4.5" STEMMED JELLY COMPOTE	25	G	GRACEFUL VASE	45
M	BIG BASKETWEAVE 8.5" VASE	20	M	WINDFLOWER 7.5" ICE CREAM SHAPE BOWL	20

DENNIS KECK, 126 CHERRY, PUNKSUTAWNEY, PA 15767 PHONE: (814) 938-7426					
W EI	GRAPE AND CABLE PUNCH CUP	\$ 55	G EI	CAMBRIDGE # 2351 PUNCH CUP RARE	75
B EI	N DRAPERY 9" VASE, FLAT FLAKE UNDER ONE FOOT	35	M GI	COLUMBIA 7 1/2" VASE RUFFLED TOP	25
B EI	COINDOT 8" LOW RUFFLED BOWL	30	M GI	AMBER HOLLY FOUR RUFFLE HATSHAPE	23
M EI	WESTMORELAND PLAIN SUGAR	12	M GI	GARLAND ROSEBOWL	30
G EI	WESTMORELAND PLAIN SUGAR AND CRACKED CREAMER				15

MARY WELCH, 213 ALEXANDER, SOOTIA, NY 12302 PHONE: (518) 393-7748					
V	PR. CANDLESTICKS 6 SIDED BASE	30	PR	M MEMPHIS PUNCH CUP	15
M	WREATH OF ROSES PUNCH CUPS	(5) EACH			10
P	IMPERIAL GRAPE WINES (2)	26	EA	G IMPERIAL GRAPE WINE	25
M	SPLIT DIAMOND COVERED BUTTER DISH (RARE)	55	G	DOUBLE STAR TUMBLERS (2) EA	37

** CARNIVAL GLASS FOR SALE **

GERALD W. COLE, 503 ROANOKE, BLUE SPRINGS, MO 64015					
PHONE: (816) 229-0635 (AFTER 6:00 PM)					
GREEN	GRAPE & CABLE 7 PC. WATER SET	525	M	GRAPE & CABLE 7 PC BERRY SET	250
P	FLOWERS & FRAMES BOWL	85	M	GRAPE & LATTICE 7 PC WATER SET	300
BLUE	STORK & RUSHES TUMBLERS (4)	35	EA	B N BASKET	90
P	GRAPE & CABLE TOBACCO HUMIDOR	375	A	DRAGON & LOTUS SPATULA FTD. BOWL	65
M	MIKADO COMPOTE	140			

EDWARD HENDERSON, 1111 N. COLLEGE, STUTTGART, AR 72160					
PHONE: (501) 673-8757 (AFTER 7:00 PM)					
A	STRETCH GLASS 9 1/2" PLATE	30	A	PERSIAN MEDALLION 5" BOWL (2 CRACKS, HOLD TO LIGHT TO SEE THEM)	8
A	PERSIAN MEDALLION	20	P	IMPERIAL GRAPE DECANTER NO STOPPER	70
M	RIPPLE 10" VASE	8	LM	FASHION IMPERIAL 8 1/2" BOWL	15
M	PLAIN, NO PATTERN 5 1/2" ASH TRAY	8	M	SMOOTH RAYS 9" BOWL	45
M	PEACOCK & GRAPE INT. BEADED BERRY EXT 7 1/2" BOWL (CHIP ON BOTTOM)	25	M	ROCCO 5" DOME-BASE BOWL (MINUTE CHIP ON EDGE OF BASE)	8

SAM & ANNE SWIERC, 520 E. AVE., DOVER, DE 19901 PHONE: (302) 736-6635					
B EI	GRAPE & CABLE ORANGE BOWL W/PERSION MEDALLION INT.	250	G EI	4 MILLERSBURG DIAMOND TUMBLERS	175
A EI	WHIRLING LEAVES BOWL	110	G EI	6 SINGING BIRD TUMBLERS	300
A EI	ACORN BURR TUMBLERS (6) 2 HAVE LG. CHIPS	250	M GI	PEACOCKS ON FENCE BOWL	90
A EI	ISAAC BENESCH BOWL	150	M EI	HORSEHEADS BOWL	70
			M EI	GRAPE & CABLE PIN TRAY	100
			W	HEARTS & FLOWERS BOWL	150

MARY HERREN, 520 BERRY, MORGANFIELD, KY 42437 PHONE: (502) 389-3121					
A EI	ROSETTES N 7 1/2" FTD BOWL	67	W EI	PERSIAN GARDEN 6" RUFFLED BOWL	45
A EI	VINTAGE PUNCH CUP	10	M EI	B & B TUMBLER	12
M EI	WATERLILY & CATTAILS TUMBLER	20	G EI	LOUISA ROSEBOWL N.H. TINY PATTERN FLECK	30
P EI	G&C BANANA BOWL, 2 SM CHIPS, GREAT COLOR				150

** CARNIVAL GLASS FOR SALE **

MRS. LYDIA CAUDLE, RT 1, BOX 87, STATE ROAD, NC 28676 PHONE: (919) 874-2519
 M EI HARVEST FLOWER TUMBLERS P EI N TOWN PUMP 550
 HAVE 6 EACH 1.25 P EI DIAMOND LACE PITCHER 195
 B EI BUTTERFLY & FERN PITCHER P EI GRAPE & CABLE BUTTER DISH 175
 REALLY NICE 450 P EI GRAPE & CABLE SUGAR 95
 M EI BEADED CABLE ROSE BOWL 55 M EI GRAPE & CABLE CENTERPIECE 179
 P EI IMPERIAL GRAPE 7 PC WATER SET 525 W EI HEARTS & FLOWERS COMPOTE 98

BURNEY TALLEY, 1814 SLATE, NW, ALBUQUERQUE, NM 87104 PHONE: (505) 242-1261
 W ORANGE TREE PUNCH BOWL BASE IB TREE TRUCK VASE 11 1/2" TALL 175
 + 4 CUPS 500 IB DIAMOND POINTS VASE 10 1/2" TALL 175
 IG TREE TRUCK VASE 10" TALL PO TARGET VASE 11 1/2" TALL 60
 PO PULLED LOOPS VASE 11" TALL PO SWIRLED RIB VASE 9 1/2" TALL 45
 P RIPPLE 8" VASE FLARED TOP 40 AQUA JACK-IN-PULPIT RIBBED VASE 55
 PO GARDEN PATH VT LARGE ICE CREAM SHAPE BOWL - LIGHT OPAL ON TIPS 325

LLOYD WARD, P.O. BOX 787, EULESS TX 76039 PHONE: (817) 540-0081 ANYTIME
 G GODDESS OF ATHENA EGERGNE W PEACOCK AT THE URN ICE CREAM SET 1,450
 (SUPER RARITY) 1,650 SET 7 PCS
 W ACORN BURRS PUNCH SET (MINOR) W PERSIAN GARDEN ICE CREAM SET 5 PC 650
 N.N. DAMAGE, CALL. 8 PCS W IRIS COMPOTE CHOICE (RARE) COLOR 285
 AO BUSHSEL BASKET, SUPER BUTTER- AO DANDELION MUG, CHOICE 650
 SCOTCH COLORING 395 AO HEARTS & FLOWERS COMPOTE 435
 M BOUQUET WATER SET 5 PCS 475 P FISHNET EPERGNE CANDY RIBBON EDGE 325

JUDY KASPER, 2567 LOOMIS DR., SAN JOSE, CA 95121 PHONE: (408) 224-4349
 M EI WREATHED CHERRY MASTER BERRY 90 P EI WREATHED CHERRY MASTER BERRY 135
 W EI WREATHED CHERRY MASTER BERRY 225 M EI WREATHED CHERRY SAUCE 2 EA 35
 P EI WREATHED CHERRY SAUCE 35 W EI WREATHED CHERRY SAUCE 55
 V EI OPEN EDGE HAT 75 P EI TREE OF LIFE SAUCE 15
 M EI OCTAGON FRUIT BOWL (ROUGHNESS ON SIDES OF BOWL) 25

** CARNIVAL GLASS FOR SALE **

STERLING BUTZ, 221 N. ADAMS ST., ALLENTOWN, PA 18104
 CB EI N POPPY OVAL PICKLE DISH 40 M EI ORIENTAL POPPY PITCHER 275
 CL EI NEW ORLEANS SHRINE GLASS 1910 45 P EI PRINCESS LAMP BASE CHIP 25
 G EI TORNADO VASE 3 SM BASE CHIPS 75 G EI HANGING CHERRIES SUGAR LID 15
 M EI WINE & ROSES WINE GLASS 25 G EI DIAMOND TUMBLER 30
 G EI BOWL IMPERIAL STAR OF DAVID 45 M EI BLACKBERRY BLOCK TUMBLER 25

BILL & CAROLE RICHARDS, 44 WATER ST., POLAND, OH 44514 (216) 757-2001
 M EI MAGNOLIA & DRAPE WATER PITCHER A EI DIAMOND LACE WATER PITCHER 210
 NICE (COLOR ALL THE WAY DOWN) 135 M EI OCTAGON MILK PITCHER 95
 B EI ENAMELED CHERRIES 7 PC WATER SET 220 M EI STAG & HOLLY 10" 3 FTD BOWL 95
 B EI FLORAL & GRAPE WATER PITCHER 225 M EI LUSTRE ROSE 7 PC WATER SET 150
 M EI GRAPE & CABLE FRUIT BOWL/PERSIAN P GI DANDELION MUG (VERY MINOR 150
 MED. INTERIOR 110 FLAT FLAKE UNDER BASE 85
 B EI GRAPE & CABLE MED SIZE PUNCH BOWL BASE

PHIL RAYMER, 33 HICHORY LANE, SAFETY HARBOR, FL 33572 PHONE: (813) 726-4612
 A BUTTERFLIES BON BON 50 P GRAPE & CABLE SHERBERT 50
 M GRAPEVINE LATTICE WATER SET 7 PC 525 M LATTICE & GRAPE WATER SET 7 PC 380
 B PANELED DANDELION WATER SET 7 PC 850 M PANTHER BERRY SET 7 PC 425
 M PEACOCK & DAHLIA BOWL 7" 50 M QUESTION MARKS BON BON 38
 PO STIPPLED FLOWER BOWL 8" 60 M STORK & RUSHES WATER SET 7 PC 400

MARY KESTERSON, 3020 MESA RD., WILLOW PARK, TX 76086 PHONE: (817) 441-8410
 DM BEADED SHELL TUMBLERS 6 EA 55 IG CORN VASE 225
 G PEACOCK TAIL HAT SHAPED DATED 1910 65 W BASKETWEAVE VASE 5" IRID 85
 W HEART & FLOWERS BOWL SUPER COLOR 155 IB NIPPON BOWL 150
 P MABLE LEAF SUGAR, CREAMER, SPOONER 235 IG BUSHSEL BASKET, RD 235
 B HEARTS & FLOWERS COMPOTE 95 W BUSHSEL BASKET, RD 235

** CARNIVAL GLASS FOR SALE **

EARL LINDQUIST, 513 - 9TH AVE., CLARKFIELD, MN 56223 PHONE: (612) 669-7361
 PO EI RAINDROPS 8 1/2" DOME FTD BOWL 58 PO EI FOUR FLOWERS 9 1/2" RUFFLED BOWL COLLAR BASE 85
 PO EI APPLE BLOSSOMS TWIGS 8 1/2" ICE SHAPE, LOW BOWL SUPER IRR. 125 PO EI PINCHED SWIRL BOTTLE 6" WHIMSEY 40
 PO EI STARFISH COMPOTE 3 1/2" TALL, 6" ACROSS PRETTY 62 PO EI QUESTION MARKS COMPOTE 2 3/4" TALL 6 1/4" ACROSS PLEATED EDGE 55
 PO EI DOGWOOD SPRAYS 9 1/2" DOME FTD FLUTED BOWL, MARIGOLD 65 PO EI PULLED LOOP VASE 11 1/4" TALL OPAL EVEN ON BASE 45
 PO EI STIPPLED PETALS DOME FOOTED 9" BOWL, RUFFLED EDGE 50
 PO EI STIPPLED PETALS 9" DOME FTD BOWL, SMOOTH EDGE, NO RUFFLES. HAND PAINTED FLOWER & LEAVES. SOME ROUGHNESS ON MOLD. A BEAUTY! 75

WILLIAM WAGGENER, 1206 ST. CHARLES, QUINCY IL 62301 PHONE: (217) 222-6651
 R EI 1974 HOACGA 7 PC WATER SET 175 R EI 1976 HOACGA 7 PC WHISKEY SET 175
 R EI 1977 HOACGA HAT PIN HOLDER 65 R EI 1978 HOACGA COIN VASE 65
 M EI BROOKLYN BRIDGE BOWL 250 AO EI HEARTS & FLOWERS COMPOTE 325
 A EI GRAPE & CABLE SWEETMEAT W/LID 195 P EI GRAPE & CABLE HATPIN HOLDER 195
 IG EI ROSE SHOW BOWL (CHIP ON COLLAR BASE) 150 M EI GRAPE & CABLE HATPIN HOLDER 165

RAY HITCHCOCK, 12121 BOX 301, WINTERSET, IA 50273 PHONE: (515) 462-2074
 G SEAWEEED IG RUFFLED BOWL SATIN 200 B APPLE BLOSSOM TWIGS PLATE 160
 A CHERRY'S 6" PLATE TIGHT CANDY RIBBON EDGE 165 VAS ORANGE TREE MUG 130
 A FERN BRAND CHOCOLATES H G PLATE 195 M FASHION ROSE BOWL 60
 A BIG FISH BOWL SQUARE TINY M H FLAT FLAKE ON COLLAR 300 B ORANGE TREE PUNCH BOWL & BASE (CRACK IN BOTTOM) 60
 B ORANGE TREE PUNCH CUPS EA 15

CHARLES ADAMS, 2211 SUNSET BLVD., LOS ANGELES, CA 90026

PHONE: (213) 384-5001 OR 483-7755
 WHITE CONSTELLATION COMPOTE, LOVELY 75 PURPLE OR AMY. ICE CREAM 9" BOWL 95
 MARIGOLD CIRCLE SCROLL, SPOONER 125 RAYS & RIBBONS FINE RADIUM FINISH 95
 SCARCE & FINE 125 PURPLE IMPERIAL GRAPE PUNCH SET 450
 PURPLE G&C N BUTTIER DISH 375 COBALT BLUE ORANGE TREE BREAKFAST 100
 COBALT BLUE BUTTERFLY & BERRY 7 PC BERRY SET, ALL MATCH FINE 50 MARIGOLD PANTHER 7 PC BERRY SET 400
 MARIGOLD DAISY BASKET, IMPERIAL, OLD ALL MATCH, LOVELY
 AO LEAF & BEADS ROSE BOWL 2 FTD HAIRLINE CRACKS-GOOD OPAL 125

** CARNIVAL GLASS FOR SALE **

YVAN BEAVORY, 109 - 5TH AVE., BOIS BRIAND, QUE., CANADA J7G1Y8 (514) 437-4585
 G IMPERIAL GRAPE DECANTER/STOPPER \$110.00
 G IMPERIAL GRAPE WINES (2) EA. 12.00

LOUIS T. BRADFORD, ROUTE #2 WEST, PADUCAH, KY 42086 PHONE: (502) 488-3005
 P FARMYARD BOWL PIE CRUST EDGE 2,600 P GOOD LUCK PLATE 275
 IG MARI. OVERLAY CORN VASE 325 P CORN VASE 475
 M 10 1/2" TWO FLOWERS BOWL W/VAS. FTD. 200 G CORN VASE 450
 B LAITIC & GRAPE 4 PC. WATER SET 300 M CORN VASE 550
 P COUNTRY KITCHEN COVERED BUTTIER 2 CORN BOTTLE 200
 2 CHIPS 200

RAY HITCHCOCK, RR 1, BOX 301, WINTERSET, IA 50273
 A FERN BRAND CHOCOLATES HAND GRIP PLATE 195 B PINE CONE 6" PLATE 60
 B APPLE BLOSSOM TWIGS PLATE 165 M FASHION ROSE BOWL 50
 A N. BUSHEL BASKET-8 SIDED 85 M STAG & HOLLY CHOP PLATE 475
 B ORANGE TREE PUNCH BOWL & BASE BOWL CRACKED 15 IG DIAMOND & RIB VASE 60
 B ORANGE TREE PUNCH CUPS EA 15
 A N G & C BUTTIER DISH OUTSTANDING COLOR 125

MARTY SCHOETTLER, BOX 188, RD-3, SEWELL, NJ 08080 PHONE: (609) 589-4325
 A EI G&C DRESSER TRAY 185 A EI G&C PIN TRAY (SM CHIP ON EDGE) 110
 M EI G&C DRESSER TRAY (STIPPLED) EXCESS GLASS 100 M EI G&C MASTER IC BOWL 90
 M EI POPPY SHOW RUFFLED BOWL 200 M EI G&C MASTER IC BOWL 225
 M EI OHIO STAR VASE (CHIP ON TOP RIM) 175 M EI PEACOCKS FENCE RUFF, BOWL 110
 M EI OHIO STAR VASE (CHIP ON TOP RIM) 175 A EI TROUT & FLY RUFFLED BOWL 425
 (VERY LITE AM OR LAV.) 500

JOANNE MITCHELL, 6584 WILLIAMS HWY, GRANTS PASS, OR 97527 (503) 862-2635
 M EI PINE CONE, 6 1/4 PLATE 40 M EI VINTAGE, 7 1/2 PLATE 75
 M EI IM. GRAPE, 6 1/2 PLATE 40 M GI COIN DOT, PITCHER 150
 M EI COIN DOT, TUMBLER (3) EA 40 CB EI PAINTED APPLE BLOSSOM TUMBLER 150
 P EI SCALES, BOWL 7 CANDY RIBBON 40 PO EI SCALES, BOWL 7 CANDY RIBBON 40
 CLM EI LEAF CHAIN, I BOWL, ICE CREAM 50 AO EI LEAF & BEADS, ROSE BOWL
 PLAIN INTERIOR, SOMETHING IN LEG 250

28
** CARNIVAL GLASS WANTED **

JOHN C. MUNDEN, 2289 S. MILITARY HWY, CHESAPEAKE, VA 23320
PHONE: (804) 545-1463
PUNCH BOWL BASES ONLY
PURPLE ACORN BURR WITH CUPS

MARIGOLD 2 ORANGE TREE
BLUE (COBALT) ORANGE TREE

WATER PITCHERS

MARIGOLD FENTON WATERLILY AND CAITAILS

BLUE (COBALT) BUTTERFLY AND BERRY

GREEN BUTTERFLY AND FERN

PUNCH BOWL TOPS ONLY

GREEN 2 ACORN BURR

TUMBLERS (SET OF 6 OR LESS)

FIERY AMETHYST PANELLED DANDELION BLUE (COBALT) BOUQUET

MRS. RICHARD HAUSER, 147 CANYON CREEK DR., SAN ANTONIO, TX 78232
PHONE: (512) 494-2914

BASE FOR WHITE ORANGE TREE PUNCH BOWL, ALSO NEED WHITE ORANGE TREE CUPS
BASE FOR PURPLE MANY FRUITS PUNCH BOWL, ALSO NEED PURPLE MANY FRUIT CUPS (5)

GEORGE S. BOND, 1406 N. FERNCREEK A, ORLANDO, FL 32803

PHONE: (305) 894-0327 (AFTER 6:00 PM)

B EI BASE ONLY FOR ORANGE TREE PUNCH BOWL

M EI BASE ONLY FOR WREATHED CHERRY BUTTER DISH

HENRY D. YESKA, JR., 552 BOK ROAD, NAZARETH, PA 18064
M HEARTS & FLOWERS PLATE

IB PEACOCK AT THE FOUNTAIN BUTTER DISH

A CONCORD GRAPE PLATE

LLOYD WARD, P.O. BOX 787, EULESS, TX 76039 PHONE: (817) 540-0081 ANYTIME

ANY COLOR WISHBONE EGERGNE LILLIES OR BASES OR COMPLETE EPERGNES

ANY COLOR WIDE PANEL EPERGNE LILLIES OR BASES OR COMPLETE EPERGNES

W MANY FRUITS PUNCH BOWL BASE

CB WREATH OF ROSES PUNCH BOWL BASE

MRS. LYDIA CAUDLE, RT 1, BOX 87, STATE ROAD, NC 28676 PHONE: (919) 874-2519
M HARVEST FLOWER PITCHER

M MILLERSBURG MARYLAND TUMBLERS NEED 6

** CARNIVAL GLASS WANTED **

LARRY KEIG, 301 UNION STREET, FAYETTE, IA 52142 PHONE: (319) 425-5244

M NUART SHADES (4.5" TALL; 5" BOTTOM OPENING; 2" FITTING)

ANY SOUVENIR PLATES, BOWLS, BASKETS, MUGS, ETC. W/IOWA TOWN STENCILED ON THEM

G STOPPER FOR IMPERIAL'S GRAPE WINE DECANTER

G PULLED LOOP VASE, 11-12" TALL

PEARL LEAF TIERS SHADE (6" BASE OPENING 2" TOP OPENING)

RAY HITCHCOCK, RR 1, BOX 301, WINTERSET, IA 50273

B STPELED N G & C COOKIE JAR BOTTOM (OR WILL SELL LID)

M-W TEN MUMS G RUFFLE BOWLS

ANY FENTONS BUTTERFLY ARMAMENT EXCEPT M-VAS.

ANY ODD COLORED HOLLY PLATES.

YVAN BEAVERY, 109 - 5TH AVE., BOIS BRIANO, QUE., CANADA J7G1YE

PHONE: (514) 437-4585

P FINE CUT ROSES ROSEBOWL (FANCY INT.) GOOD FEET ONLY

B FINE CUT ROSES ROSEBOWL GOOD FEET ONLY

1B FINE CUT ROSES ROSEBOWL GOOD FEET ONLY

1G FINE CUT ROSES ROSEBOWL GOOD FEET ONLY

G OR B TORNADO VASE RIBBED OR FLAIN MINT ONLY

TOM & SHARON NORDINI, 36 N. MORNITZ AVE., FREPORT, IL 61032

PHONE: (815) 235-4407

PURPLE BASE TO G & C BUTTER DISH

JUDY CLARDY, 1602 FORTNER ST., DOTHAN, AL 36301 PHONE: (205) 794-9128

B KITTEENS SAUCER

M LONG THUMBPRINT SUGAR

P GRAPE & CABLE BREAKFAST CREAMER

M BO-PEEP PLATE

M BASKETWEAVE & CABLE SUGAR

M PANSY CREAMER

W WES & BETTY STRAIN, 832 CARSON ROAD, FERGUSON, MO 63135 (314) 524-5608
W BASE FOR MANY FRUITS PUNCH BOWL

M BILL & CAROLE RICHARDS, 44 WATER ST., POLAND OH 44514 (216) 757-2001
M BASE FOR ORANGE PEEL PUNCH BOWL

** CARNIVAL GLASS WANTED **

M LOUIS T. BRADFORD, ROUTE #2 WEST, PADUCAH, KY 42086 PHONE: (502) 488-3005
M BEADED SHELL 5" FTD BOWLS NEED 3
P BEADED SHELL SUGAR, CREAMER & SPOONER
M BEADED SHELL TABLE SET

DENNIS KECK, 126 CHERRY, PUNXSUTAWNEY, PA 15767 PHONE: (814) 938-7426
LM GRAPE AND CABLE PERFUME STOPPER
G WISHBONE EPERGNE BASE
IB GRAPE AND CABLE MASTER PUNCH BASE
G PEACOCK AT THE FOUNTAIN BUTTER LID
G PEACOCK AT THE FOUNTAIN CREAMER
B DIAMOND POINT BASKET
W 4" BASKETWEAVE EXTERIOR RUFFLED HAT SHAPE OR BASE
P OR M FORMAL HATPIN HOLDER OR VASE

A. C. DICKEY, 144 CHANDLER ST, VACAVILLE, CA 95688
P SPRINGTIME TUMBLERS NEED 4 EA
W BLACKBLOK TUMBLER
W WREATH CHERRY TUMBLER WITH RED CHERRIES
IG WISTERIA TUMBLER
G STRAWBERRY SCROLL
G FEATHER AND FEAST
G INVECTED FEATHER AND HOLESTAR TUMBLER
IB ORIENTAL POPPY TUMBLER WITH INTERIOR RIBBING
B GRAPE ARBOR
P RASPERY MILK PITCHER

GLORIA PFEIFFER, 219 DELAWARE DR., ROCHESTER, NY 14621
PHONE: (716) 266-1273 (AFTER 6:00 PM)
MARIGOLD FIELDFLOWER GREEN LUSTRE ROSE SUGAR AND CREAMER
MARIGOLD ORANGE TREE (FOOTED) SUGAR AND COVER

CHARLES ADAMS, 2211 SUNSET BLVD., LOS ANGELES, CA 90026
PHONE: (213) 384-5001 OR 483-7755
MARIGOLD FASHION WATER PITCHER AND PUNCH BOWL TOP
ANY COLOR ADVERTISING PLATES OR BOWLS

*** 1985 HOACGA SOUVENIRS ***

The HOACGA has chosen a carnival glass bell, featuring a portrait of HARRY NORTHWOOD, as our 1985 souvenir. Northwood's portrait will be a part of the mold work and was made from a portrait of his during the time he was heavily engaged in the production of carnival glass. The beautiful Circle Scroll pattern will be used for the balance of the bell. The color will be in red with the HOACGA logo and date on the inside of the bell. It will also have the Fenton trademark.

This will be the first of a planned series that will honor the makers of our well-loved carnival glass. In 1986 we plan on a bell using the portrait of FRANK L. FENTON, one of the founders of the Fenton Art Glass Company. We also plan on following with JOHN FENTON of the Millersburg Glass Company in 1987 and on to Imperial, etc.

We think that this souvenir will make a beautiful and very collectable piece of carnival glass and will also honor those responsible for the making of our favorite glass. We hope that you will be as excited about these souvenirs as we are and that you will get your orders in as soon as possible. MEMBERS MAY ORDER AS MANY AS THEY WISH UNTIL STOCK DEPLETED. THE PRICE IS \$35 FOR EACH BELL plus \$2.50 for Postage and Insurance. (If you plan to pick these up at the convention, omit the postage)



MAKE CHECKS PAYABLE TO: HOACGA
MAIL REMITTANCE TO: MR. JOHN BRITT
3048 TAMARAK DRIVE
MANHATTAN, KANSAS 66502

I wish to order _____ 1985 Souvenir Bells at \$35. Add \$2.50 Shipping Cost

NAME: _____

ADDRESS: _____

CITY, STATE, ZIP: _____

Will pick up at Convention _____ Please Ship _____

APPLICATION FOR MEMBERSHIP

THE HEART OF AMERICA CARNIVAL GLASS ASSOCIATION, INC.

DATE _____

NAME _____

SPOUSE _____

ADDRESS _____

CITY _____ STATE _____

ZIP CODE _____ TELEPHONE _____

RECOMMENDED BY _____

Do you want your name in the directory? YES _____ NO _____

DUES ARE \$20 U.S. PER YEAR (JUNE TO MAY - With Back Issues On Request)

SEND DUES TO: H.O.A.C.G.A.
GLEN FORTNEY, SECRETARY
P. O. BOX 303
BUCKNER, MO 64016

A FEW OF THE BENEFITS OUR CLUB OFFERS:

The ONLY MONTHLY PUBLICATION on just Carnival Glass Collecting, keeping you informed of new discoveries and all of the current events. Members only may advertise, FREE OF CHARGE!!!

An exclusive PATTERN NOTEBOOK with yearly special inserts (ALL inserts are still available)

ANNUAL SOUVENIR AND CONVENTION WITH SOME OF THE GREATEST PEOPLE YOU CAN HOPE TO MEET!!!

<<<< JOIN TODAY >>>>