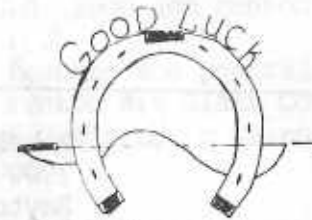

**Heart of America
Carnival Glass Association, INC.**

NOVEMBER 1985

NEW ADDRESS



First Class Mail
U. S. Postage
PAID
Kansas City, Mo.
Permit No. 4352

**ALL MATERIAL FOR THE BULLETIN
SEND TO BULLETIN SECRETARY:**

**MARGE MILLER
7619 N. W. WESTSIDE DRIVE
KANSAS CITY, MISSOURI 64152**

**PLEASE SEND ALL CHECKS TO:
GLEN FORINEY, SECRETARY**



Thanksgiving



Heart of America
Carnival Glass
Association Inc.

Membership June to May
\$20.00 Per Couple or Single

Published the 15th
of each month

PRESIDENT

Robert Grissom
7900 Crescent
Raytown, MO 64138
(816) 356-5320

VICE-PRESIDENT

Nadine Paulsen
700 Purdom
Olathe, KS 66061
(913) 782-1313

TREASURER

Karen Engel
35292 Oak View Drive
Brownsville, OR 97327
(503) 466-5989

SECRETARY

Glen Fortney
P. O. Box 303
Buckner, MO 64016

BULLETIN SECRETARY

Marge Miller
7619 N. W. Westside Drive
Kansas City, MO 64152
(816) 741-4635

All monetary figures quoted are in U. S. dollars.
Please make checks for dues payable to H.O.A.C.G.A.
and send them to the secretary as listed above.

**** DO NOT SEND TO THE BULLETIN SECRETARY ****

H.O.A.C.G.A. OCTOBER MONTHLY MEETING

At 2:00 P. M., October 27, 1985, President Robert Grissom called the meeting to order. The minutes of the September meeting were read by Secretary Glen Fortney and approved as read. President Grissom read the Treasurer's Report as prepared by Treasurer Karen Engel. The report was approved as read.

After discussion on the remaining Loving Cups, a motion was made and seconded not to put any more money in them in order to sell them, but to use as many of them as needed for table arrangements of flowers for the convention. The remainder to be kept for future use.

A motion was also made and seconded to have Fenton Glass make a spittoon whimsy in emerald green for Room Display Awards.

Convention Co-Chairman Eleanor Mochel updated everyone on the Convention Plans. Everything seems to be coming together quite well. Emphases are on Room Displays and Educational Programs, also a fantastic Auction. Let's all start making plans now to be in Kansas City in April for a wonderful time.

Charles Mochel reported on the Air Capitol Convention which he attended. He said they had a fine Auction and the Glass, in general, was still selling well.

Robert Grissom reported on the Effingham, Illinois, Auction and he also enjoyed a nice visit in the home of Robert and Nancy Stremming, Strasbert, Illinois.

After a break for refreshments, Plates (Large and Small) were viewed by all. We thank everyone for bringing their beautiful plates and sharing them with us. We know there is always a risk in hauling them around. With no more business, the meeting was adjourned.

We want to thank those who were with us for the first time this year. Also the regular ones that make the monthly meeting possible and keep the club going. Let's all find something new and bring it to the next meeting. GOOD LUCK.

Your Secretary

Glen Fortney
Glen Fortney

EDUCATIONAL TUMBLER SERIES

By John & Lucile Britt

CIRCLE SCROLL BY DUGAN-DIAMOND

It is my opinion this is one of the finest of all the Carnival Glass Tumblers. If I were to pick twenty top carnival glass tumblers that I have seen, the purple "Circle Scroll" would certainly be close to the top of that list. Tumblers in this pattern are very beautiful, highly sought after, and most desirable. The marigold example is very scarce and hard to find, but not nearly as rare as those in purple. It has all the beauty and charm of the purple tumbler and would make a great addition to any collection.

Like Frolicking Bear and the Butterfly, there are not enough purple tumblers in this pattern for every tumbler collector to own one, so therefore, they demand a very high price. Richard Owens, in his fine carnival glass tumbler book, states that "Circle Scroll Tumblers has also been reported in blue." I have never seen one in that color, so if they do exist they too would be extremely rare.

I find that the Dugan-Diamond pattern pieces that were produced in blue are much harder to find than are those in purple. The Fisherman and the Stork & Rushes Mugs are very good examples of this. Many Dugan-Diamond patterns have never been reported in blue however.

"Circle Scroll" is the 94th entry in this tumbler series. Next month we will cover a foreign made tumbler that is known as "Mirrored Peacocks."

"CIRCLE SCROLL" TUMBLERS

Purple

Marigold



PICTORIAL PATTERN PARADE

By John & Lucile Britt

"DIAMOND RING" ROSE BOWL

Since this seems to be the year of the rose bowls, we thought it would be a good time to feature this rather common "Diamond Ring" pattern in the rare rose bowl shape. We have seen many "Diamond Ring" bowls in both marigold and smoke and a few in other colors, but it took us by surprise when we found this pattern in a rose bowl.

This shape is not listed in any of the carnival glass books - to the best of my knowledge. The unique feature of this imitation cut glass pattern is the rings. Each of the zippered ovals are topped with a diamond that is divided into tiny squares. This rose bowl is in dark marigold with very fine iridescence on both the interior and exterior. It stands 4 1/2" high and measures 5 1/2" across the top. A sunburst type figure is pressed into the bottom side of the collar base.

"Diamond Ring" is an Imperial pattern and was made by the old Imperial Glass Corporation of Belaire, Ohio. This company was noted for its large production of imitation cut glass type patterns. "Fashion" is another Imperial intaglio type pattern in which rose bowls are rarely found. I have seen "Fashion" rose bowls in both marigold and purple. The few purple examples that I have seen were in a deep purple with fantastic iridescence, the type of beautiful purple in which Imperial is so well noted.

"DIAMOND RING" ROSE BOWL



RARITIES AND SELDOM SEEN
By Ivan & Betty Mitchell

PURPLE WINDMILL PITCHER & TUMBLERS
By Imperial (Old)

The below water set is extremely hard to come by. If you don't believe it, just try and find one. I would classify it as rare. We purchased this one at auction, however, it is the only one I have ever seen at auction or otherwise in PURPLE. The tumblers are not quite so difficult to find as the pitcher. In marigold you have no trouble in finding this set, as they are fairly plentiful as reflected in the price.

The Purple Set with 4 Tumblers will bring approximately \$1300.00 to \$1500.00. The marigold would be a small fraction of this. The Old Green is also difficult to find.

The windmill was made in shapes of Water Sets, Berry Sets, Pickle Dishes, Fruit Bowls, Milk Pitchers, and Dresser Trays. The colors were Purple, Green, Smoke, Clambroth, and Marigold.

PURPLE PITCHER & TUMBLERS



"EXTREMELY RARE CARNIVAL PIECE" SURFACES
BY Elvis Randell

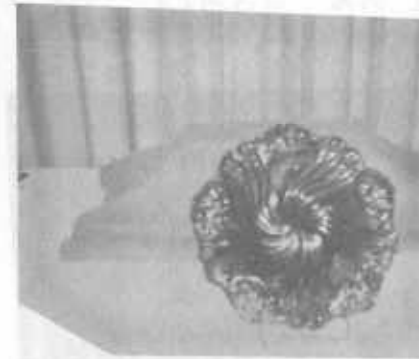
GREEN ROSE PINWHEEL LOW BOWL

It is just like Christmas, you never know what will show up.

I received a letter and a listing of Carnival Glass for sale. Listed was a one of a kind - a Green Rose Pinwheel Bowl. I bought the item without question. When I received it, the item was super! What was interesting is that it was very flat, almost a plate, so I contacted several experts on Carnival. It turned out to be a very low bowl. Lower than the other two Amethyst bowls known.

It is definitely the only green one known. It has super color and iridescence. The roses stand out quiet nicely and has super pinwheel effect. It was molded very unusual.

I took it to the Air Capital Convention and people were breath-taken with the piece. Truly a fabulous rarity. Maker is still unknown. Artist that designed it, designed the Super Rare Rose and Greek Key Plate.



* * * * *

NOTICE!!!

BULLETIN SECRETARY'S NEW ADDRESS IS:

MARGE MILLER
7619 NW WESTSIDE DRIVE
KANSAS CITY, MISSOURI 64152

EXCITING FENTON RARITY SURFACES

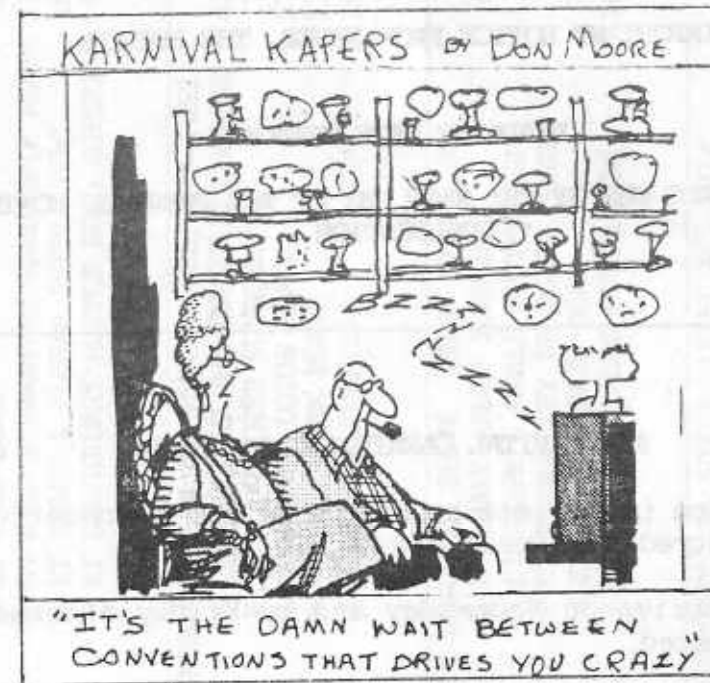
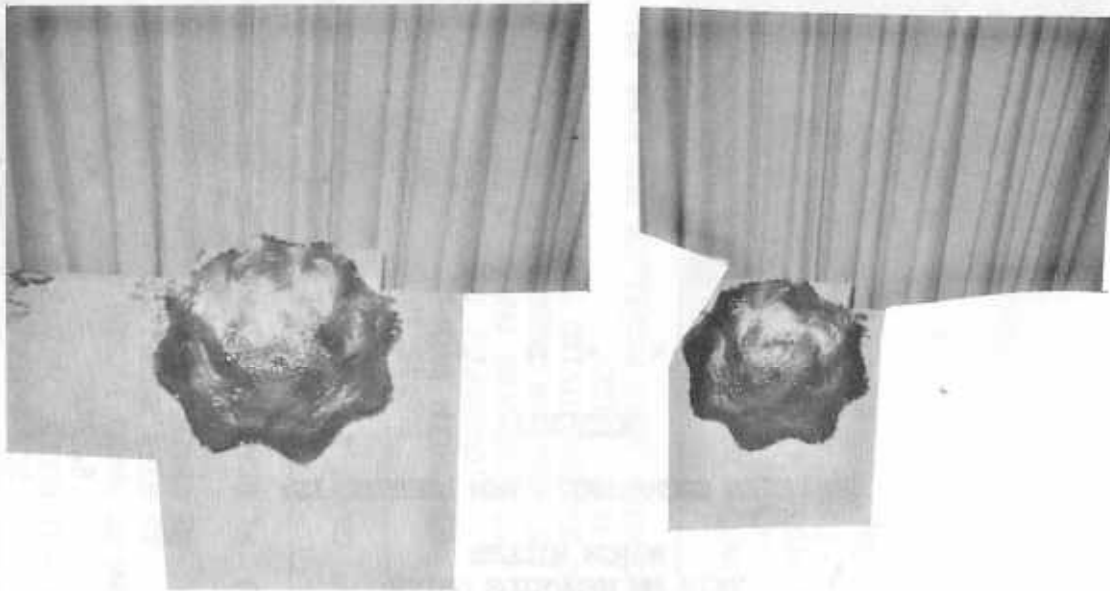
By Elvis Randell

THE LARGE RED STAG AND HOLLY BOWL

During an antique show in October, we went to the show we usually do - to look for Carnival. We slowly went through each booth, we saw many different antiques.

We then came to a booth filled with glass, very little Carnival, but we looked at each piece carefully anyway. Under a shelf, in a deep corner, we found a 10 3/4" ruffled bowl. It was an odd Stag and Holly Bowl - a very unusual piece. We inquired about the piece but no one looked at it. We bought it right away.

We have had several experts in the field of Carnival rarities look at the piece. It was definitely confirmed as a red piece. They said it was a one of a kind piece. It has superior color and iridescence. The feet are super red and the collar base yellowish. The piece has deep red streaks through the center, the rest of the bowl looks amberish. It is a fabulous and extremely desirable piece of Carnival. Definitely one of the top red rarities.



ROSEBOWL PHOTOGRAPHS NEEDED

The Second Part of the Rosebowl Section of the H.O.A.C.G.A Notebook will be completed in time for the 1986 Convention.

I still need photographs for three Rosebowls: (1) Columbia (2) Crackle (3) Waffle Block.

To date, about 95 different patterns have been identified. I have been able to obtain a photograph of each pattern, with the exception of these three. If any member has any of these three Rosebowls, I would appreciate it if you would let me know. I would also need a photograph. If perhaps you know of someone who has some of the above, please let know also.

If you have not ordered your First Section on Rosebowls, you are missing some very useful information that is available to you as a collector.

You can order the First Section (60 Different Patterns) by sending the Secretary, Glen Fortney, \$4.00 plus \$1.00 postage.

IMPORTANT NOTICE FROM MARGE, THE EDITOR

DEADLINE DATE CHANGE

ALL ARTICLES AND ADS DUE BY THE 25TH DAY OF THE PREVIOUS MONTH BEFORE PUBLICATION

AIR CAPITAL CARNIVAL GLASS CLUB

Our 1985 convention is now past history. We had a wonderful time and hope everyone enjoyed this years event.

People begin to arrive on Wednesday and by Friday afternoon over 40 rooms had been rented.

The auction was handled by Tom Burns and was assisted by Bill Richards. We appreciate all the hard work they both put into the auction.

We saw a lot of new faces this year and hope they will come back next year as well.

Our club was able to sign up 30 new members during the convention making our total membership 120. A special thanks goes out to Don Lacock who brought us 6 new memberships. You are all very special to us.

We were very pleased to have Al and Eleanor Roddenhouse with us this year. Al was our main speaker for the banquet. His talk was on the Heinz 57 Varieties of Tumblers. Lots of interesting information was given and we are glad you shared it with us.

Christ Harnish gave the special program on Friday afternoon and everyone enjoyed this portion of the convention. We soon found out the Harnishes have many talents along with collecting carnival glass.

The club members had lots of home made goodies for the hospitality room and for all who attended the auction.

Donald E. Kime, Secretary

OCTOBER CARNIVAL GLASS DISPLAY

Some 100 pieces of carnival glass in all shapes, patterns and colors were presented to the public during a one day show sponsored by the San Diego Depression Glass Club on Saturday, October 19. Seventeen antique dealers participate in this annual affair of long standing. Dean and Diane Fry and Michael and Dee Sponsler contributed carnival and continuous time with the display in order to provide information to interested viewers.

In promoting the collecting of carnival glass as a hobby, we hoped also to interest and inform more local persons of our recently formed San Diego County Carnival Glass Collectors Club. Three hundred and eighty (380) persons attended this one day show and sale. Much favorable comment came forth from those admiring the display. The glass was placed on 6 tiers - 10 feet long on a well-lighted stage. Many questions were answered throughout the day. Two new members were gained for our club, proving once again "sharing" is the key to carnival happiness!

TAMPA BAY CARNIVAL GLASS CLUB

The Tampa Bay Carnival Glass Club held it's regular monthly meeting October 20 at the home of Nancy and Phil Raymer, Safety Harbor.

Following a delightful buffet, the business meeting was called to order. Art Smith gave a progress report on the Fifth Annual Lose Your Heart To Carnival Glass Jamboree to be held February 13, 14, and 15, 1986, in Lakeland.

Special emphasis was placed on the necessity of early reservations for selling space due to the great interest expressed by collector-dealers throughout the country.

It was announced that annual Christmas Party will be hosted by Shirley and Maurice Conyers in Madeira Beach.

The next meeting will be November 17 with Dorothy and Art Smith in Lakeland.

Arthur I. Smith

SAN DIEGO COUNTY CARNIVAL GLASS CLUB

Our Sept. 19 meeting came to order at 7:30 P.M. presenting a program theme on "whimseys" and "odd shapes" to 23 members. Dee Sponsler conducted the program discussing glass brought by Charles Hof, Werdals, Sponslers, and Frys.

Constitution and by-laws were accepted as drafted by the officers. Our club emblem is the Fenton Dragon and motto is: "Irridencence is the Essence".

Reservations for 30 were received toward a Christmas Party planned for December 1 at a local hotel. Further reservations will be accepted until November 20 by contacting Diane Fry.

It was very nice to have Jack and Gerry Brown in attendance from the Huntington Beach, California, group of Southern California Carnival Glass Collectors. They brought glass for sale too, along with personal warmth, which added a nice dimension to their visit.

Refreshments were served and meeting adjourned at 9:45 P. M. Refreshments provided by Charles Hof, Andy Spencer, Margaret Werdal and Dee Sponsler.

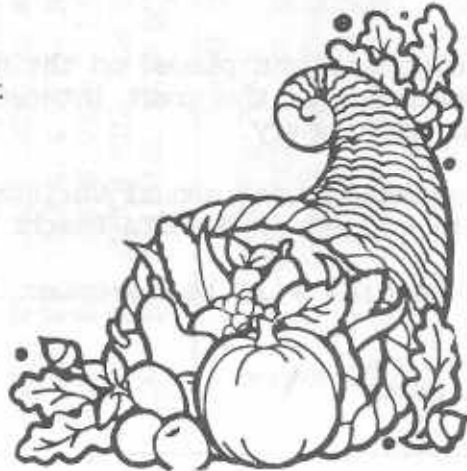
A program consisting of at least 100 plates and carnival reproductions of all patterns was presented to 33 members and guests at the Thursday, October 24 meeting of S.D.C.C.G.C.

Raffle and door prizes were awarded to Linda Taglioli and Nancy Reames.

It was decided by the group to meet monthly beginning January 1986.

Meeting adjourned at 9:20 P. M.

Submitted by: Diane Fry, President



SAN JOAQUIN VALLEY CARNIVAL GLASS CLUB

The San Joaquin Valley Carnival Glass Club held its September 29th meeting in Modesto, California under the direction of Chuck Bullard, president. There were approximately 36 members present to buy, sell, display, and most importantly, to talk about Carnival Glass. The SJVCGC has recently elected new officers for 1985-86. They are:

Chuck Bullard - President
Jim Capps - Vice President
Mary Hudson - Treasurer
Marie McGee - Secretary/Editor

John Resnick was the guest speaker at the meeting. He and his wife, Pat, brought an outstanding display of 6" advertising pieces - bowls, plates and hand grips. John's talk was very educational and showed us a whole new specialty in Carnival Glass.

Show and Tell was presented by Chuck Gerhardt, a square Fan and File bowl; Cliff Hoblit, a Seacoast pin tray and a marigold Raspberry pitcher; and Chuck Bullard, with one piece of a Carnival Glass Bridge Set (Millersburg).

The next meeting of the SJVCGC will be held in Modesto on December 15. Contact President Chuck Bullard at 408-779-1452 for more details.



NORTHERN CALIFORNIA CARNIVAL GLASS CLUB

The Northern California Carnival Club celebrated its 16th birthday at the October 20th meeting in Fairfield, California. Charlotte and Gordon Williams cut the birthday cake.

President Karma Vullo directed the festivities and introduced many of the members who have done so much for the club. Joyce and Dave Middleton were honored as the founders of the club; Charlotte Williams, Helen Bell, Judy Kasper and John Muehlbauer were thanked for their hard work on The Collector, the NCCC newsletter; and Roy Mills, Eartheil Nance, Wanda Fulkerson and June McCarter were honored for their service as past officers.

Karma thanked many other members who have worked so faithfully on committees, meetings and conventions. A club of any kind is only as good as its members and the NCCC is proud of its membership.

The Show and Tell portion of the program featured a lot of beautiful Carnival Glass. Don Moore shared the "Absentee Dragon" plate in marigold and the only known amethyst Dragon and Strawberry Bowl. Chuck Bullard shared a blue Butterfly and Berry Hatpin Holder; Bill Powell, an aqua opal Three Fruits bowl with stippled background; Marie Capps, an ice blue Persian Medallion flat bowl; Bill Harmon, a stretch vase in marigold and a small purple pitcher; Wanda Fulkerson, an Apple Blossom Twig plate in peach opal; Russell Umbraco, a near cut pitcher (souvenir of Minnesota); and June McCarter, a beautiful iridized handbag. (Apologies to all for any reporting errors. I'd rather watch than take notes).

The next regularly scheduled meeting will be on January 19, 1986. For more information, contact the club president, Karma Vullo at (415) 656-3126.



*** FALL TRAVELS ***



Can't believe the summer season has ended and fall nearly gone - even so - that means an end to our carnival travels for another year. It's been such a good one though so we aren't complaining.

After Richfield, we went on to visit relatives over Labor Day so we had a wonderful time going to a big flea market at Aurora, Ohio. We are tempted to go to Ohio to live. There seems more places to go there - so few around Charleston.

We always think we can't pass up the fall festivals around Sugar Creek and Millersburg, Ohio, so we went back on September 27 to Sugar Creek. We met Heeleys, Kuhls, and Radcliffs for a good weekend together. We all looked at the display windows at Millersburg as their festival was the next weekend. On Sunday, we went to a good Antique Show and Flea Market at Mansfield, Ohio, and found a lovely Peacocks at Urn N Amethyst Chop Plate. We forgot we had no place for it and it still is an orphan with no place yet to call its own. We have found some real nice Carnival this year so don't care if we don't get another thing.

We are a bit more homebound anyway as Byron turned his ankle right at home in the living room - so he has a small fracture on left foot and a modified cast. He still isn't running any races or walking miles every day as he was wanting to do. I am getting in form with the trips out for daily needs. Also raking the leaves from our Poplar Tree in the back yard which has several tons falling every day, or so it seems. I tell myself it is good exercise. Anyway, all is well and we count our blessings.

We had our 49th Anniversary too, so celebrated the entire week by going in three different directions to see our fall foliage which was so beautiful one hated to ever have darkness come. Each season has its own appeal and we are plain grateful to be here to enjoy them as they come along - without fail as they always have and always will.

Byron and Grace Rinehart
Charleston, W. VA



ARTICLES AND ADS DUE NOVEMBER 25TH FOR THE DECEMBER ISSUE

ARTICLES AND ADS FOR THE BULLETIN (NEWSLETTER) MUST BE IN BY THE 25TH OF THE PREVIOUS MONTH. ANY MATERIAL RECEIVED AFTER THAT DATE GOES IN THE FOLLOWING MONTH'S ISSUE.

EXAMPLE: IF YOU WISH AN ARTICLE OR AD TO BE IN THE DECEMBER ISSUE IT MUST BE IN NO LATER THAN THE 25TH OF NOVEMBER. THIS IS NECESSARY DUE TO THE PROCESSING OF THE BULLETIN AND IN ORDER TO HAVE IT IN YOUR HANDS BY DECEMBER 15. MATERIAL RECEIVED AFTER THE 25TH OF NOVEMBER WILL APPEAR IN THE JANUARY ISSUE.

YOUR COOPERATION WILL BE GREATLY APPRECIATED IN EXPEDITING THE BULLETIN.

THANK YOU.

MARGE MILLER

Marge Miller

Dear Marge:

On September 19, I spoke to the monthly meeting of the Centinela Antiquers' Club with 40 members present. I talked about the five major glass companies that produced carnival glass. In addition I illustrated my talk with examples of carnival glass from each company. My talk was well received and many members brought pieces of carnival for identification as to the maker and pattern.

Charles Adams, Los Angeles, California



Let us
give
thanks



Dear Marge:

Recently I purchased the H.O.A.C.G.A. Pattern Book complete with Punch Sets, Mugs, Table Sets, Water Sets, and Rose Bowls. I would like to know if there are available any other sections covering other items of Carnival Glass. I am so pleased with my new notebook and its coverage, I would hate to believe I had missed out in completing the entire notebook. Please let me know before they are destroyed.

Thanking you kindly,
Lloyd M. Miller I

P.S. I am new in collecting (5 years) but never became really involved until a year ago. Being 66 years of young age, I still must pump the pedals a little faster in acquiring knowledge about this beautiful, beautiful glass.

The above Pattern Book is complete

CAN YOU HELP?

Dear Marge:

We were wondering about a piece of carnival we recently purchased. Is a Holly Bowl in peach opalescent scarce? We had never seen one before and thought it had beautiful opalescence. Couldn't find it listed in the price guides. Perhaps someone with more knowledge would let me know.

Enjoy the newsletter and looked back through all the old ones and found a Holly Plate where they listed the colors of the bowls and there was no peach opal listed there.

Thank you.

Beverly and Les Tuthill
Box 201
Lee Center, NY 13363 (315) 337-9118



** CARNIVAL GLASS FOR SALE **

DARLENE YOHE, P.O. BOX 343, STUTTGART, AR 72160 (501) 673-3437

W	GRAPE ARBOR TUMBLER	100	P	G & C DRESSER TRAY	185
P	G & C HATPIN HOLDER	175	P	G & C ORANGER BOWL	250
P	G & C PIN TRAY CHIP UNDER BASE	75	M	ORANGE TREE LADIES GOBLET	20
M	G & C COVERED SUGAR, LITTLE ROUGH		M	ORANGE TREE MUG	20
	ON THUMBPRINTS	60	G	FLUTE BUTTER LID	45
P	SPRINGTIME COVERED BUTTER, SMALL CHIP UNDER BASE				175

DELCOURIS M. CRAFT, 702 BRADLEY DRIVE, BLOOMINGTON, IL 61701 (309) 662-3610

MARIGOLD OPEN EDGE BASKET, JACK-IN-PULPIT SHAPE	22
AQUA SAME 2 SIDES UP, ROUGH SPECK	42
AMETHYST WREATH OF ROSES (VARIANT?) COMPOTE, STEM TWIST	52
MARIGOLD WATERLILY AND CATTAIL WHIMSEY, 6" PLATE, 2 SIDES TURNED UP	50
MARIGOLD PEACOCK & URN N 10" ICE CREAM BOWL, LIGHT WEAR ON EXTERIOR	180
GREEN HORSES HEADS FOOTED RUFFLED BOWL, PINHEAD BOTTOM ONE FOOT	105
MARIGOLD LEAF & BEADS ROSEBOWL, RIBBED INTERIOR, 2 SMALL FLAWS	48
PURPLE SAME	53
MARIGOLD WREATH OF ROSES ROSEBOWL HARD TO FIND PINHEAD	45
WHITE NIPPON, PIE CRUST EDGE BOWL, MFG. FLAW ON 1 FLUTE	130

OLA SHOOM, 182 CHELSEA ROAD, KINGSTON, ONT, CAN. K7M 348 (613) 389-5293

LAV GI PEACOCK & GRAPE BOWL 9" DIA. INTERMITTENT CANDY-RIBBON EDGE (BRONZE COLOR IRID)	125
--	-----

A EI PEACOCK AT THE FOUNTAIN TABLE SET N SLIGHT ROUGHNESS OF INSIDE RIM OF SUGAR; BUTTER BASE IS LAVENDAR (2 CHIPS ON UPPER EDGES)

NOTE: THESE ARE CANADIAN PRICES. U.S. DOLLARS ARE APPROX. 1/3 LESS

HUBERT F. SHELTON, RT 1, BOX 290, MUNFORDVILLE, KY 42765 (502) 528-5893

ICE BLUE IMPERIAL JEWELL PLATES 8"	1300	M	EX BUTTERFLY & BERRY TUMBLERS (5)	20
OR ALL	5000	M	EX 6" G & C DEEP BOWL	25
M EX PANSY SPRAY SUGAR	10	W	EX BLOCK & FILE 8" BOWL STIPPLED	25
P EX AURORA BOREALLIS A BEAUTY	35	M	EX TWO HANDED LOVING CUP	20
M EX FTD ORANGE TREE TUMBLER EA	33	M	CATTAIL & WATERLILY TUMBLER (1)	25
LB EX 3 TUMBLER ONE PERFECT 1 SMALL BOTTOM EDGE CHIPS (ALL)				20

** CARNIVAL GLASS FOR SALE **

RICK KOJIS, 11916 W. LAKEFIELD DR., WEST ALLIS, WI 53227
PHONE: (414) 327-0321 AFTER 5 P.M.

IB	HEARTS & FLOWERS BOWL				
G	MSBG PEACOCK "MYSTERY" 9" BOWL	235	W	FANCIFUL 9 1/2" LOW RUFFLED BOWL	125
PO	HONEYCOMB ROSE BOWL	175	P	DUGAN CHERRIES 6" CRIMPED EDGE PLATE	110
PO	SCALES 9" RUFFLED BOWL	75	P	FIELDFLOWER TUMBLER	45
PO	FISHNET EPERGNE LILY	45	A	MSBG PEACOCK 5" BERRY DISH, SUPER RADIUM	60
PO	FILE & FAN COMPOTE	75			

MARY HERREN, 520 S. BERRY, MORGANFIELD, KY 42437 (502) 389-3121

RA	EI 6" RAYS RUFFLED BOWL		M	EI FENTON P & U BOWL 3/1 EDGE PEDESTAL BASE	65
M	EI ALMOST FLAT IMP GRAPE 9" RUFFLED PLATE	125	M	EI VINTAGE POWDER TOP	25
W	EI FINE CUT & ROSES CANDY SM ROUGHNESS 2 FEET	25	W	EI FROSTY GRAPE ARBOR PITCHER HANDLE REPAIRED	150
		20	A	EI ROSETTES N 7 1/2" FTD BOWL	50

HARM WESTERHUIS, RR 1, BOX 49, FLAITE, SD 57369 (605) 337-3631

SM	ACANTHUS LARGE BOWL	65	W	ORANGE TREE OPEN SUGAR	50
CLM	NORTHWOOD FLUTE WATER PITCHER	175	M	GRACEFUL VASE	35
B	CHERRY CHAIN BOWL BEAUTIFUL	50	P	RAYS & RIBBONS LG. BOWL	50
P	SCROLL EMBOSSED BOWL	45	G	FLUTE OPEN SUGAR	35
A	STIPPLED RAYS ROSE BOWL FIERY AMETHYST	50	G	VINTAGE BOWL PRETTY	40

LEE BRYANT, RT 1 BOX 109, DECATUR, IN 46733 (219) 639-3415

M	GI BUTTERFLY & BERRY VASE 7 1/2" TALL	20	PO	LEAF RAY NAPPY (VERY GOOD OPAL)	20
G	EI SHELL & JEWELL SUGAR & CREAMER NO LIDS (BOTH)	30	PO	NAUTILUS SUGAR (TRADE)	250
M	EI APPLE BLOSSOM TWIGS 8 1/2" RUFFLED PLATE	60	P	EI FRUIT & FLOWERS BON BON	50
			SM	EI STAR MEDALLION MILK PITCHER	45
			M	GI JACKMAN PINT WHISKEY BOTTLE	15

** CARNIVAL GLASS FOR SALE **

KEN BAKSHAS, 16845 ANTIPOCH ROAD, WHITE CITY, OR 97503 (503) 826-4256
 M FASHION PUNCH BOWL & BASE W/6 CUPS 180 P 4 N GRAPE & CABLE PUNCH 35
 M 5 WHIRLING HOBSTAR PUNCH CUPS 35 CUPS EA.
 SM OPEN ROSE 9" BOWL 55 M LUSTRE ROSE BUTTER 58
 M STORK VASE 48 M ILLINOIS DAISY COOKIE JAR W/LID 55
 TL LOUISA 8 1/2" FTD. BOWL (FLOW) 25 M TWO FLOWERS FTD. BOWL 45
 M WATER LILY & CATTAILS 5" BOWL 32

JOHN & LUCILLE BRITT, 3048 TAMARAK DRIVE, MANHATTAN, KS (913) 539-1933

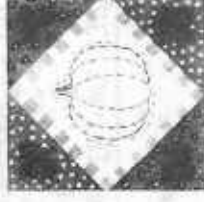
A TULIP SCROLL VASE 145 G MLSE. PEACOCK & URN SW. ICE CREAM 185
 M SAILBOATS, 7" GOBLET 185 DM PEACOCK AT THE FOUNTAIN COMPOTE 450
 B TWO FLOWER ROSE BOWL 110 VAS ACORNS RUFFLED LOW BOWL 125
 A PANTHER SMALL FTD SAUCE 150 AMB ACORNS RUFFLED LOW BOWL 110
 AQUA PANTHER SMALL FTD SAUCE 250 CELESTE BLUE COIN SPOT COMPOTE 145

D. WOOD EVANS, 617 E. 18TH STREET, SOUTH SIOUX CITY, NE 68776 (402) 494-5269

M LOW FLUTED PANTHER SAUCE 25 M BANDED GRAPE MUG 25
 M FLORAL GRAPE TUMBLER 20 M OPEN ROSE TUMBLER 20
 M SODA GOLD STIPPLED TUMBLER 18 A GRAPE & CABLE MED. PUNCH BOWL 30
 DM FLORAL GRAPE TUMBLER 20 BASE (BEAUTIFUL IRID)
 LM DEEP FLUTED PANTHER SAUCES (2) EACH 25

NAOMI CALKINS, 1014 SEDEEVA STREET, CLEARWATER, FL 33515 (813) 447-2962

A EI SWEET-MEAT COMPOTE BASE N 85 A EI BEADED CABLE CANDY DISH N 50
 M EI LOTUS & GRAPE CARD TRAY 35 M LE STORK VASE 38
 M EI ORANGE PEEL PUNCH CUP 20 M EI MINIATURE BLACKBERRY COMPOTE 50
 A EI DUGAN CHERRY 8" BOWL FTD 75 G EI BLACKBERRY WREATH 6" DISH MSBG 60
 INSIDE & OUTSIDE PATTERN 50 G EI GRAPE & CABLE PIN-IRAY 125
 PO EI RAINDROPS BOWL, BEAUTIFUL 50



** CARNIVAL GLASS FOR SALE **

WILLIAM WAGGENER, 1206 ST. CHARLES DR., QUINCY, IL 62301 (217) 222-6651

M EI FLORAL & GRAPE BULBOUS PITCHER 165 M EI 6 IMPERIAL GRAPE GOBLET 200
 & 3 TUMBLERS M EI IMPERIAL GRAPE WATER SET 7 PC 185
 M GI DECORATED FREEZIA TANKARD AND 200 M EI STAG & HOLLY 11" BOWL N 85
 5 TUMBLERS G EI STAG & HOLLY 8" SPATULA FTD N 150
 M EI GOOD LUCK BOWL PIECRUST EDGE 85 A EI GOOD LUCK BOWL FLUTED AND 125
 B EI S - REPEAT TOOTHPICK HOLDER 140 RUFFLED EDGE 135
 MMG EI 3 NORTHWOOD MARKED LIGHT SHADES

JACKIE TYLER, BOX 647, BALDWIN, WI 54002 (715) 684-2397

RED EI LARGE BLACKBERRY HAT, FABULOUS COLOR, IRRI. AND MOLD WORK 225
 AMETHYST EI WREATH OF ROSES COMPOTE, RUFFLED, VERY PRETTY! 42

MARY WELCH, 213 ALEXANDER, SCOTIA, NY 12302 (518) 393-7748

LM PUNCH CUP, STAR IN BASE, MARKED SOUVENIR CHESTER N.S. 12
 M CREAMER, WIDE PANEL, 4 FEET MARKED, SOUVENIR CHESTER N.S. 25
 G CREAMER, HEART BAND, MARKED SOUVENIR OF NY, ENGRAVED BEATRICE 1909 60
 G FINECUT & ROSES ROSE BOWL FEET GOOD 95
 SEND 2 STAMPS FOR LIST OF 350 ITEMS FOR SALE

BARBARA NELSON, RFD 4 - BOX 155, LACONIA, NH 03246 (603) 293-7246

A EI RASPBERRY MILK PITCHER N 150 P EI MAPLE LEAF LG. STEMMED FRUIT 50
 M EI INVERTED COIN DOT PITCHER 150 BOWL - ICE CREAM
 A GI G & C PLATE 8 1/2" B/W EXT 50 A EI DIAMOND WATER PITCHER MSBG 150
 A EI G & C ORANGE BOWL 10 3/4" X 6 1/2" NEXT TO LARGEST. SUPER SATIN
 INSIDE & OUT N FIERY M EI PEACOCK & URN BOWL 8 1/2" B/B 60
 M EI IRIS HERRINGBONE PITCHER DARK 15 EXT. 8 RUFFLED EDGE 35
 PO EI APPLE BLOSSOM TWIGS, RUFFLED PLATE 9 X 2 1/4 - BIG B/W EXT 175

** CARNIVAL GLASS FOR SALE **

CM	JUDITH MILLER, 25-Y WESTWOOD, 55 MILL PLAIN ROAD, DANBURY, CT 06811		
	FROSTED BLOCK BOWL 7 1/2"		15
	MARKED U.S.A		
M	COIN DOT BOW 8 1/2" RUFFLED	20	40
M	LBJ ASHTRAY/HAT	15	15
M	STORK & RUSHES MUG	15	30
M	LEAF RAY NAPPY	18	25
		15	25
			7

EDWARD HENDERSON, 1111 N. COLLEGE, STUTTGART, AR 72160

PHONE: (501) 673-875. (AFTER 7:00 P.M.)

M	ROCOO 5" DOME-BASED BOWLS 2 EA	15	35
M	FASHION IMPERIAL COMPOTE	8	15
A	STRETCH GLASS 9 1/2" PLATE	25	7
A	PERSIAN MEDALLION DISH 5"	15	25
P	IMPERIAL GRAPE DECANTER NO STOPPER	65	7

KENNETH GOTTHARDT, 2418 SHALER STREET, ALLENTOWN, PA 18103 (215) 797-6340

M	EI GRAPE IMPERIAL 8 3/4" FRUIT BOWL	30	28
CLM	EI FLORAL & OPTIC ROSE BOWL	30	
SM	EI SWIRL VASE 7 1/2"	12	23
M	EI DUTCH MILL ASH TRAY	23	14
A	EI STIPPLED RAYS BON BON FENTON (3 SIDES TURNED UP)	23	27

NAOMI CALKINS, 1014 SEDEEVA STREET, CLEARWATER, FL 33515

G	EI 3 FRUITS PLATE	75	30
G	EI PEACOCKTAIL HAT ADV. BOTTOM	40	50
G	EI VINTAGE HANDLED CARD TRAY	40	55
PO	EI 2 COINS POT COMPOTES EA.	40	85
AM	EI SINGING BIRDS BERRY DISH	35	55

HOURS

OF

SLEEP

NATURE requires 5;
CUSTOM gives 7;
LAZINESS takes 9;
WICKEDNESS wants 11.



** CARNIVAL GLASS FOR SALE **

M	EI JAMES & JUDY KEY, RT 1, BOX 153-B, MARIANNA, AR 72360 (501) 295-6770 AFTER 7		
	DRAGON & LOTUS BOWL CANDY		30
	RIBBON EDGE	50	25
CB	EI ORANGE TREE ICE CREAM SHAPE BOWL	45	65
M	EI G & C INT. PERSIAN MEDALLION		110
	ORANGE BOWL	100	160
G	EI G & C ADV. PLATE "OLD ROSE		55
	DISTILLERY"	175	

CHUCK BULLARD, 14915 DARK STAR CT., MORGAN HILL, CA 95037 (408) 779-1452

AO	HEART & FLOWERS COMPOTE PINHEAD ON		425
	BASE	245	70
AO	THREE FRUITS SPATULA FID BOWL	385	575
G	IMPERIAL GRAPE PLATE	100	135
G	PEACOCKS ON THE FENCE PLATE	700	265
G	THREE FRUITS BOWL - FENTON	125	

LYDIA CAUDLE, RT 1, BOX 87, STATE ROAD, NC 28676 (919) 874-2519

A	EI LARGE MSBG CHERRY BOWL	85	85
M	EI ACORN BURR PUNCH CUP	20	135
M	EI GRAPE & CABLE BANANA BOAT	145	75
P	EI GRAPE & CABLE SWEETMEAT	195	79
B	EI ELECT. GOOD LUCK BOWL PIE		169
	CRUST EDGE	185	

RAY HITCHCOCK, RR 1, BOX 301, WINTERSET, IA 50273 (515) 462-2074

M	ORANGE TREE POWDER JAR LID	25	95
RA	BLACKBERRY SPRAY HAT PRETTY	110	
A	BLACKBERRY FID 9" BOWL NICE	55	175
VAS	ORANGE TREE MUG	100	175
DM	PEACOCK URN COMPOTE SUPER COLOR	45	
B	BUTTERFLY & BERRY 6 PC BERRY SET		250
	SUPER COLOR	175	

** CARNIVAL GLASS FOR SALE **

JOE MERRIFIELD, 10018 N.E. ALTON, PORTLAND, OR 97220 (503) 253-8276
 M BUTTERFLY & BERRY WATER SET M VINEYARD 7 PC WATER SET 175
 7 PC 425 P G & C WHISKEY DECANTER W/STOP 695
 E I M GRAPE & CABLE WHISKEY DECANTER G G & C CANDLESTICK 80
 W/STOP 550 M WINE "BRITT IOWA SOUVENIR" 35
 M G & C CANDLESTICK PR. 100 G G & C BUTTER DISH BASE GROUND 140
 M HOBSTAR BAND TUMBLERS BOTH SHAPES EA. 45

NAOMI CALKINS, 1014 SEDEVA STREET, CLEARWATER, FL 33515 (813) 447-2962
 A E I SWEET-MEAT COMPOTE BASE N 85 A E I BEADED CABLE CANDY DISH N 50
 M E I LOTUS & GRAPE CARD TRAY 35 M L E STORK VASE 38
 M E I ORANGE PEEL PUNCH CUP 20 M E I MINIATURE BLACKBERRY COMPOTE 50
 A E I DUGAN CHERRY 8" BOWL FTD G E I BLACKBERRY WREATH 6" DISH MLBRG 60
 INSIDE & OUTSIDE PATTERN 75 G E I GRAPE & CABLE PIN-TRAY 125
 PO E I RAINDROPS BOWL, BEAUTIFUL 50

JOELLEN ROTONDI, P.O. BOX 401, BUTLER, WI 53007 (414) 354-8254 EVENINGS
 IB E I FINE CUT & ROSES RUFFLED CANDY 175 AO E I BEADED CABLE ROSEBOWL N 295
 DISH, FANCY INTERIOR PASTEL IRID.
 TEAL E I CORINTH 8 1/2" JACK-IN-PULPIT 50 LGO PEACOCK & GRAPES 8" FLAT BOWL, 225
 SHAPED VASE RIBBON CANDY EDGE
 LAV E I G & C FTD 7 1/2" RUFFLED BOWL 195
 LSASE FOR LIST OF PASTEL CARNIVAL FOR SALE

DICK HATSCHER, BOX 261, WALNUT HILL ROAD, BETHEL, CT 06801 (203) 743-1468
 M STAG & HOLLY 9" FTD PLATE 395 P ZIG ZAG WATER PITCHER 195
 M ZIPPER HOOP LAMP 9 1/2" TO-TOP W GARDEN PATH 7 PC BERRY SET 350
 OF BURNER 225 W ORIENTAL POPPY WATER PITCHER 945
 AO DRAPPERY ROSE BOWL W HEARTS & FLOWERS BOWL 35
 BLUE 3 FTD 11 1/2" STAG & HOLLY BOWL 165 RED COVERED CANDY DISH COLONIAL 125
 RED RARE PEACOCK OF URN COMPOTE (TINY SLIVER ON TOP EDGE OF BASE) 650
 MORE SEND SASE FOR LIST

** CARNIVAL GLASS FOR SALE **

NORMA WAGNER, 302 MAIN, BAGLEY, IA 50026 (515) 427-5749
 A HATTIE 10 1/2" CHOP PLATE (FLAKE OFF BACK OF ONE POINT 575
 A HATTIE BOWL (MATCHES PLATE) BOTH FOR 600

M.J. SCHOETTLER, SR., BOX 188, R.D. 3, SEWELL, NJ 08080 (609) 589-4325
 M E I G & C WATER SET 7 PC 275 A E I G & C WATER SET 7 PC 410
 M E I OCTAGON WATER SET 7 PC 275 B E I PEA. AT FOUNTAIN WATER SET
 A E I ACORN BURRS WATER SET 7 PC 775 7 PC 525
 AM E I RASPBERRY WATER SET 4 PC VAS CHERRY CHAIN 10" IC BOWL 190
 1 TUMBLER SM BASE CHIP VAS BLACKBERRY SPRAY HAT 60
 WHT E I QUESTION MARK COMPOTE 120 A E I DANDELION WATER SET 7 PC 975

DICK WETHERBEE, 847 STAFFORD ST., ROCHESTER, MA 01542 (617) 892-4420
 M E I INVERTED STRAWBERRY POWDER JAR 95 G E I LEAF CHAIN 9 1/2" PLATE (TEAL 145
 P E I THREE FRUITS/BASKETWEAVE 8 1/2" GREEN
 M E I ACANTHUS 8" DEEP BOWL (DARK DISH 25
 MARIGOLD) 42 G E I HEAVY GRAPE 8" PLATE 45
 M E I WEEPING CHERRIES/WESTERN DAISY M E I NORTHWOOD NIPPON 9" BOWL BEAUTY 42
 BACK 8 1/2" DOME FTD BOWL P E I FLOWERS & FRAMES 9" DOME FTD
 HARD PATTERN TO FIND 45 P E I BOWL 70
 P E I FRUITS AND FLOWERS (2 HANDLED) BON BON PRETTY 90

JOHN & CAROLYN MIKKONEN, RR 1 BOX 474-F, SHAKOPEE, MN 55379 (612) 445-6098
 A MARILYN TUMBLER 110 M DIAMOND & DAISY CUT TUMBLER 36
 P G & C (36-RAY) TUMBLER 40 M HARVEST FLOWER TUMBLER 90
 M WATERLILY & CATTAILS UT-1 TUMBLER 40 M STAR MEDALLION TUMBLER 20
 M FILE TUMBLER 95 G DOUBLE STAR TUMBLER 35
 M FLUTE N'S 40 R LATE WATERLILY 10

VELMA HEFFNER, 1213 NE 29TH, GRESHAM, OR 97030 (503) 667-4761 PACIFIC TIME
 IB E I LEAF & BEADS ROSE BOWL 1200 M E I MILADY PITCHER 475
 CLM E I FIELD FLOWER PITCHER 210 M E I POPPY SHOW VASE 12" 350
 W E I POPPY SHOW PLATE 9" 475 A E I WISHBONE FTD PLATE 9" 375
 LAV E I BROCADED ACORN CAKE PLATE 12" (ON PEDESTAL) 85

**** CARNIVAL GLASS FOR SALE ****

JOE & POLLY KAMBITCH, 3233 COLGATE, GRANITE CITY, IL 62040 (618) 451-7923	
M	EI HOLLY CANDY RIBBON EDGE 8" BOWL 60
	G EI HOLLY CANDY RIBBON EDGE 8" BOWL
	G GI GRAPE & CABLE 11" RUFFLED BOWL (HAS 1" PLACE NOT IRRIDIZED) 47
AMB	EI PANSY PICKLE DISH 60
S	EI STAR MEDALLION 7 1/2" BOWL 28
P	EI GRAPE & CABLE HATPIN HOLDER (INTERNAL CRACK) 60
IB	EI HEARTS & FLOWERS 9" RUFFLED BOWL 250

J. C. BARKER, ROUTE 3, BOX 163-BB, SAVANNAH, MO 64485 (816) 662-2265

P GRAPE & CABLE DRESSER TRAY 175

BURNIEY TALLEY, 1814 SLATE N.W., ALBUQUERQUE, NM 87104 (505) 242-1261	
W	6" GARDEN PATH VT. PLATE (RARE) (UNDERFILL ON SOME FLUTES) 125
	W GARDEN PATH VT. LARGE BOWL-6 DEEP RUFFLES (NICE) 215
G	6" PINE CONE PLATE 125
W	6" PERSIAN GARDEN PLATE 85
AME	SOWENBY DIVING DOLPHINS FTD BOWL (NICE) 185
RED	HORSE HEAD MEDALLION NUT BOWL (RARE) 975
	PO PETAL & FAN SMALL SAUCE 35

LEE BRYANT, ROUTE 1, BOX 109, DECATUR, IN 46733 (219) 639-3415	
G	ACORN BURRS 5" ROUND SAUCE BOWLS 4 EA 30
	M LUSIRE ROSE BUTTER DISH 45
B	STORK & RUSHES TUMBLERS BEADED (HAVE 6) ALL 30
	M IMPERIAL FLUTE MUG (PER NOTEBOOK INSERT) 20
P	ORIENTAL POPPY TUMBLERS 2 EA 40
	G IMPERIAL GRAPE TUMBLER (1) 25

PLEASE!

WHEN SENDING NAMES & ADDRESSES OF NEW OR POTENTIAL MEMBERS, TYPE OR PRINT THE NAMES & ADDRESSES, SO THAT WE MAY BE SURE TO GET THE SPELLING CORRECT. YOU DON'T LIKE YOUR NAME MISPELLED, DO YOU?

**** CARNIVAL GLASS FOR SALE ****

CHARLES A. ADAMS, 2211 SUNSET BLVD., LOS ANGELES, CA 90026
PHONE: (213) 483-7755

M	STORK & RUSHES PUNCH BOWL & BASE, RARE 150	CB	TREE TRUNK 13" VASE (N) FINE COLOR & IRID. 85
PO	QUESTION MARK, COMPOTE CANDY RIBBON EDGE, EQUITISE 80	A	BEADED BASKET, FINE IRID. & COLOR 75
W	CONSTELLATION COMPOTE, SEAFORM EXT. FROSTY 80	PO	WISHBONE & SPADES, 10" RUFFLED BOWL. LOVELY! 175
AO	10" "RIBBED" VASE (N) BUTTERSOTCH 60	M	IRIS BUTTERMILK GOBLET 50
	PO PINCH VASE, VERY PRETTY 60		

SEND LARGE SASE FOR CHRISTMAS SALES LIST OF OLD CARNIVAL GLASS



TAKE A MINUTE TO LET US KNOW OF ANY

Address Change!



** CARNIVAL GLASS WANTED **

RICK KOJIS, 11916 W. LAKEFIELD DR., WEST ALLIS, WI 53227
PHONE: (414) 327-0321 AFTER 5 P.M.

IB PEACOCK AT THE FOUNTAIN CREAMER P IMPERIAL GRAPE PUNCH BOWL BASE ONLY
DM ACORN BURRS PUNCH BOWL BASE ONLY G MSBG CHERRIES POWDER JAR BOTTOM

HARM WESTERHUIS, RR 1, BOX 49, FLATTE, SD 57369 (605) 337-3631

W PALM BEACH LARGE BERRY BOWL W PALM BEACH BOTTOM FOR BUTTER DISH
W PALM BEACH SPOONER-CREAMER SUGAR

CHARLES A. ADAMS, 2211 SUNSET BLVD., LOS ANGELES, CA 90026

M FASHION PUNCH BOWL TOP, NEED TWO
A STOPPER FOR GRAPE & CABLE COLOGNE

PHONE: (213) 483-7755
ANY COLOR ADVERTISING BOWLS, FLATES,
ETC.

JOELLEN ROTONDI, P.O. BOX 401, BUTLER, WI 53007 (414) 354-8254 EVENINGS

ICE BLUE ANY PLATES OR PIECRUST EDGED BOWLS
ICE BLUE THREE FRUITS BOWL, FOOTED OR COLLAR BASE
ICE BLUE DAISY & PLUME, OR LEAF & BEADS ROSEBOWLS
ICE BLUE PEACOCK AT THE FOUNTAIN COMPOTE
ICE GREEN ANY PLATES, ROSEBOWLS, OR COMPOTES

JOE & POLLY KAMBITCH, 3233 COLGATE, GRANITE CITY, IL 62040 (618) 451-7923
R FLOWERING DILL JACK IN THE PULPIT SHAPE

JAMES W. MOORE, 300 MERCER STREET (10-A), NY, NY 10003 (212) 254-6468
PO EI PERSIAN GARDEN MASTER ICE CREAM BOWL

JOHN C. MUNDEN, 2289 S. MILITARY HWY., CHESAPEAKE, VA 23320 (804) 545-1463
G STOPPER FOR G & C COLOGNE P G & C BUTTER BASE ONLY
P PEACOCK AT FOUNTAIN BUTTER BASE ONLY A SINGING BIRDS BUTTER BASE ONLY
A G & C BUTTER BASE ONLY B FLORAL AND GRAPE WATER PITCHER
P G & C PUNCH BOWL TOP ONLY M ORIENTAL POPPY TUMBLERS
M ORANGE TREE PUNCH BOWL BASE & CUPS G WREATH OF ROSES PUNCH CUPS (6)

** CARNIVAL GLASS WANTED **

SINGLETON BAILEY, P.O. BOX 95, LORIS, SC 29569 (803) 756-7495
SQUARE A TROUT AND FLY BOWL SQUARE G TROUT AND FLY BOWL
ICE CREAM SHAPE M BIG FISH ICE CREAM SHAPE A BIG FISH
SQUARE M BIG FISH SQUARE A BIG FISH
RUFFLED G BIG FISH

JUDITH MILLER, 25-Y WESTWOOD, 55 MILL PLAIN ROAD, DANBURY, CT 06811
IMPERIAL GRAPE WINE DECANTER STOPPER, A OR P

KEN BAKSHAS, 16845 ANTIOCH ROAD, WHITE CITY, OR 97503 (503) 826-4256
PURPLE GRAPE & CABLE POWER JAR LID OR WILL SELL BASE
MAR. ORANGE TREE POWER JAR LID OR WILL SELL BASE
PURPLE GRAPE & CABLE SWEETMEAT BASE OR WILL SELL LID
MAR. ONE 3 1/2" SODA GOLD CANDLESTICK OR WILL SELL ONE
PURPLE STOPPER FOR IMPERIAL GRAPE DECANTER OR WILL SELL DECANTER

DENNIS B. KECK, 126 CHERRY STREET, FUNXSUTAWNEY, PA 15767 (814) 938-7426
BLUE MANY FRUITS PUNCH BOWL TOP GREEN G & C PUNCH BOWL BASE (MASTER)
ICE BLUE G & C PUNCH BOWL BASE (MASTER)
PURPLE OR GREEN HOBSTAR AND FEATHER PUNCH BOWL BASE
PURPLE STORK IN RUSHES BUTTER LID GREEN ANY DUGAN PIECES
MARIGOLD PERSIAN GARDEN 10 1/2" BOWL WITH RECESSED BASE MARIGOLD MAPLE LEAF BUTTER LID
MARIGOLD 474 PUNCH BOWL TOP
MARIGOLD G & C COOKIE JAR LID

A. C. DICKEY, 144 CHANDLER STREET, VACAVILLE, CA 95688
P SPRINGTIME NEED 4 EA. TUMBLERS W BLACKBERRY BLOCK TUMBLER
IG WISTERIA TUMBLER B RASPBERRY TUMBLER
IG DANDELION N TUMBLER G FEATHER AND HEART TUMBLER
G MARILYN TUMBLER G STRAWBERRY SCROLL TUMBLER
B GRAPE ARBOR TUMBLER P RASPBERRY MILK PITCHER

** CARNIVAL GLASS WANTED **

DICK HATASCHER, BOX 261, WALNUT HILL ROAD, BETHEL, CT 06801 (203) 743-1468
GREEN G & C CANDLESTICK HEARTS & FLOWERS ANYTHING

CHUCK BULLARD, 14915 DARK STAR CT., MORGAN HILL, CA 95037 (408) 779-1452
M HOBSTAR & FEATHER BRIDGE SET (CLUB OR SPADE)
M MULTI-FRUITS & FLOWERS PUNCH CUP P INVERTED STRAWBERRY SUGAR BOWL LID
P FASHION TUMBLER M DOUBLE STAR TUMBLER
B MANY STARS BOWL M BUTTERFLY & BERRY HATPIN HOLDER
P 474 PUNCH BOWL TOP ONLY WILL SELL BASE R PLAID BOWL

BARBARA NELSON, RFD 4 - BOX 155, LAONIA, NH 03246 (603) 293-7246
AO HEARTS & FLOWERS BOWL P CONSTELLATION COMPOTE

GLADYS VAN DYKE, P.O. BOX 88, ELLSINORE, MO 63937 (314) 322-5277
G DANDELION - N.W. TUMBLERS (3) M TEN MUM TUMBLERS (1)
M ACORN BURR PUNCH CUPS (6) M FLUFFY PEACOCK TUMBLERS (2)
M BROKEN ARCHES PUNCH CUPS (5)

MARY HERREN, 520 S. BERRY, MORGANFIELD, KY 42437 (502) 389-3121
1 - 4 FLORAL & GRAPE WHITE TUMBLERS

LYDIA CAUDLE, RT. 1, BOX 87, STATE ROAD, NC 28676 (919) 874-2519
M HARVEST FLOWER PITCHER M MSBG MARYLAND TUMBLERS UP TO 6

RAY HITCHCOCK, RR 1, BOX 301, WINTERSET, IA 50273 (515) 462-2074
W CAPTIVE ROSE 9" PLATE PO HOLLY PLATE OR BOWL

GARY & KIMBERLY GILKISON, RT. 1 BOX 48, FOSTER, NY 41043 (606) 472-3386
M EI FRUIT BOWL (ONLY) "MEMPHIS", NORTHWOOD

*** 1985 H.O.A.C.G.A. SOUVENIR BELL ***

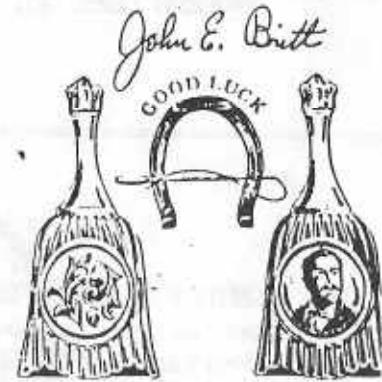
In 1985 H.O.A.C.G.A. decided to make a series of 4 Souvenir Bells - each different bell would feature a Portrait of a Famous Maker of Carnival Glass.

The first bell, which was made as the 1985 Souvenir, has a portrait of HARRY NORTHWOOD during the time he was heavily engaged in the production of Carnival Glass. The beautiful circle scroll pattern is used for the balance of the bell pattern. The bell is Red, made by Fenton, and contains the H.O.A.C.G.A. logo and Fenton trademark.

In 1986 the bell will feature the portrait of FRANK L. FENTON, one of the founders of the Fenton Art Glass Company. We will follow with the JOHN FENTON, founder of Millersburg Glass Company and a prominent person of Imperial Glass Company.

It is our belief that this souvenir will make a beautiful and collectable piece of Carnival Glass in addition to honoring those responsible for the making of our favorite glass. We hope you will enjoy and appreciate this souvenir.

A few of the HARRY NORHTWOOD Souvenir Bells are still available at \$35.00 each plus \$2.50 postage. Don't miss out on the first of these bells.



MAKE CHECKS PAYABLE TO: HOACGA
MAIL REMITTANCE TO: MR. JOHN BRITT
3048 TAMARAK DRIVE
MANHATTAN, KANSAS 66502

I wish to order _____ 1985 Souvenir Bells at \$35. Add \$2.50 Shipping Cost

NAME: _____

ADDRESS: _____

3 1 CITY, STATE, ZIP: _____

APPLICATION FOR MEMBERSHIP

THE HEART OF AMERICA CARNIVAL GLASS ASSOCIATION, INC.

DATE _____

NAME _____

SPOUSE _____

ADDRESS _____

CITY _____ STATE _____

ZIP CODE _____ TELEPHONE _____

RECOMMENDED BY _____

Do you want your name in the directory? YES _____ NO _____

DUES ARE \$20 U.S. PER YEAR (JUNE THROUGH MAY)

SEND DUES TO: H.O.A.C.G.A.
GLEN FORTNEY, SECRETARY
P. O. BOX 303
BUCKNER, MO 64016

A FEW OF THE BENEFITS OUR CLUB OFFERS:

The ONLY MONTHLY PUBLICATION on just Carnival Glass Collecting, keeping you informed of new discoveries and all of the current events. Members only may advertise, FREE OF CHARGE!!!

An exclusive PATTERN NOTEBOOK with yearly special inserts (ALL inserts are still available)

ANNUAL SOUVENIR AND CONVENTION WITH SOME OF THE GREATEST PEOPLE YOU CAN HOPE TO MEET!!!

<<<< JOIN TODAY >>>>