
**Heart of America
Carnival Glass Association, INC.**

DECEMBER 1985

NEWSLETTER

First Class Mail
U. S. Postage
PAID
Kansas City, Mo.
Permit No. 4352



PLEASE SEND ALL CHECKS TO:
GLEN FORINEY, SECRETARY

ALL MATERIAL FOR THE BULLETIN
SEND TO BULLETIN SECRETARY:

MARGE MILLER
7619 N. W. WESTSIDE DRIVE
KANSAS CITY, MISSOURI 64152



Heart of America
Carnival Glass
Association Inc.

Membership June to May
\$20.00 Per Couple or Single

Published the 15th
of each month

PRESIDENT

Robert Grissom
7900 Crescent
Raytown, MO 64138
(816) 356-5320

VICE-PRESIDENT

Nadine Paulsen
700 Purdon
Olathe, KS 66061
(913) 782-1313

TREASURER

Karen Engel
35292 Oak View Drive
Brownsville, OR 97327
(503) 466-5989

SECRETARY

Glen Fortney
P. O. Box 303
Buckner, MO 64016

BULLETIN SECRETARY

Marce Miller
7619 MW WESTSIDE DRIVE
Kansas City, MO 64152
(816) 741-4635

All monetary figures quoted are in U. S. dollars.
Please make checks for dues payable to H.O.A.C.G.A.
and send them to the secretary as listed above.

**** DO NOT SEND TO THE BULLETIN SECRETARY ****

H.O.A.C.G.A. NOVEMBER MONTHLY MEETING

At 2:00 P.M., November 24, 1985, President Robert Grissom called the meeting to order. The minutes of the last meeting were read by Secretary Glen Fortney and approved. The Treasurer's Report was not received in time for a reading.

President Grissom introduced new members attending for the first time: Leslie & Ruth Bolling from Osawatomie, Kansas, Wilbur & Bernice Bell from Independence, Missouri, and Bill & Ruth Cunningham from Independence, Missouri. Also braving the weather from out-of-town were Robert & Marie Schlagel of Olathe, Kansas, and Charles & Annabelle Vaughn from Baldwin City, Kansas. We were glad to have them with us.

President Grissom also mentioned that a long time member of the club, Mr. Ed Knitter passed away this past week and the funeral was November 23.

Eleanor Mochel, Co-Chairperson of the Convention, reviewed the plans to date for the Convention. She gave a tentative program for the April 23-24-25-26th Convention.

- Thursday A.M. - Registration
- Thursday 2:00 P.M. - Seminar on Opalescent Glass, George Loescher
- Thursday 7:00 P.M. - Seminar on Color in Carnival, John Muehlbauer
- Friday 10:00 A.M. - Seminar on Advertising Pieces, John Resnick
- Friday 2:00 P.M. - Annual Business Meeting
- Friday 7:00 P.M. - Tribute to Early Collectors, John & Lucile Britt, Coordinators
- Saturday Morning - Carnival Auction, John Woody Auctioneer
- Saturday 6:30 P.M. - Banquet, Guest Speaker: Mr. Frank Fenton
- Sunday Morning - Breakfast and a Sad Farewell

After a break for refreshments, the meeting continued with a Show & Tell on Millersburg Glass. There were many beautiful pieces shown, including some rare and hard to find pieces. We wish to thank those who brought their glass and also those who ventured out on a disagreeable day to make the meeting.

President Grissom reported on the Souvenir Bell, the second opalescent in a series of four that is about ready to be made. It will be in Green opalescent and iridised. This one will have the portrait of Frank Fenton, the founder of Fenton Glass Company. A motion was made and seconded to sell this years Souvenir at the same price as last years. The cost is \$35.00.

With no further business, the meeting was adjourned. Glen Fortney, Sec.

EDUCATIONAL TUMBLER SERIES

By John & Lucile Britt

MIRRORED PEACOCKS

"Mirrored Peacocks" is a very pretty and rather unusual tumbler. It was made with somewhat thinner glass than most carnival glass tumblers. It is also a little taller than the average size carnival glass tumbler. "Mirrored Peacocks" was probably made in Czechoslovakia or Finland or some other country in that area. In addition to the peacocks, a number of small ram like animal figures extend around the bottom part of the tumbler. The color is a good deep marigold. I have seen only four of these tumblers, so I believe I would be safe in stating that they are quite rare.

The credit for naming this pattern goes to Jody Mitchell. She located and researched these tumblers while living in the Houston, Texas area. She later moved with her family to Oregon and is still collecting carnival glass.

I consider "Mirrored Peacocks" to be a very fine tumbler. It adds pattern variety and color to the tumbler collection. Unfortunately, it is so scarce that only a few tumbler collectors will every be able to own one. Keep looking however, as one might show up sometime in your favorite flea market at a very modest price.

The "Mirrored Peacocks" tumbler represents our 95th entry into this carnival glass tumbler series. Next month we will cover the Chatelaine, a tumbler many collectors feel is on one of the most beautiful of all the carnival glass tumblers.



PICTORIAL PATTERN PARADE

By John & Lucile Britt

COSMOS & CANE TINY WHIMSEY & TUMBLER

This cute little carnival glass piece, shown on the left in the accompanying photograph, was brought to the American Carnival Glass Convention for identification.

The pattern is "Cosmos & Cane" which is considered to have been made by the United States Glass Company. We have taken a picture of it, alongside a "Cosmos & Cane" tumbler in order for you to see just how tiny it really is. I consider it to be a whimsey that some glass maker had formed into this shape from a regular "Cosmos & Cane" sauce dish.

The color is of a beautiful honey amber with super iridescence. "Cosmos & Cane" carnival glass pieces, like its sister pattern "Palm Beach", are almost always found in honey amber or white. I can recollect seeing only a couple of Palm Beach vases in purple. These two patterns, and especially "Palm Beach", are very well known for their whimsys in many different shapes.

Since viewing this fine piece, I have been told that there is another one like this known and also one that was formed into a tiny cuspidor. I consider this little gem a rare piece of carnival glass. It is most beautiful and it would certainly be a shining star in any carnival glass collection. It would be especially attractive in a collection of miniatures.



RARITIES AND SELDOM SEEN
BY Ivan & Betty Mitchell

BLUE NU-ART HOMESTEAD CHOP PLATE - IMPERIAL

This plate is very beautiful and rare. I only know of some three or four in blue.

In the sixties some of these were reproduced and were marked with the IG mark. However, the reproduction has hurt the rating of this fine plate, otherwise, they would be close to the top on the chop plate list.

The colors are blue, ice green, (Green, very rare), purple, rare, white, smoke, amber, and marigold.

It is 10 1/2" in diameter. These plates also have the "Greek Key" border and the edge is scalloped.

This is the same pattern as the "Currier & Ives" Nu-Art plate "Homestead."



SINCERE SYMPATHY

Ed Knitter of Raymore, Missouri, passed away November 21. Our condolences to his wife, Irene, and family.

OFFBEAT CARNIVAL SHAPES

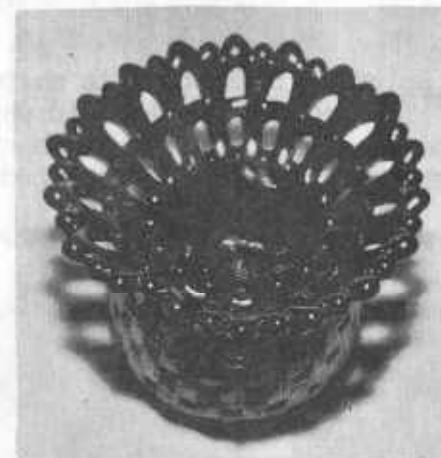
by Don Moore

WHIMSEYS

It is a temptation to hand the "whimsey" label on any unusual shape with which we are unfamiliar. This is improper and eventually makes the use of the "whimsey" designation meaningless.

A whimsey is properly defined as a creative expression which departs from the norm. In other words it is usually the result of a workman exercising his imagination on a piece which was intended to be something else. A tumbler that is squeezed into a spittoon is a good example.

Whimseys are usually one of a kind and often quite impractical for use as a routing household item. It is hard to think of anything more impractical than the Blackberry Open-Edge Spittoon shown in Photo 1.

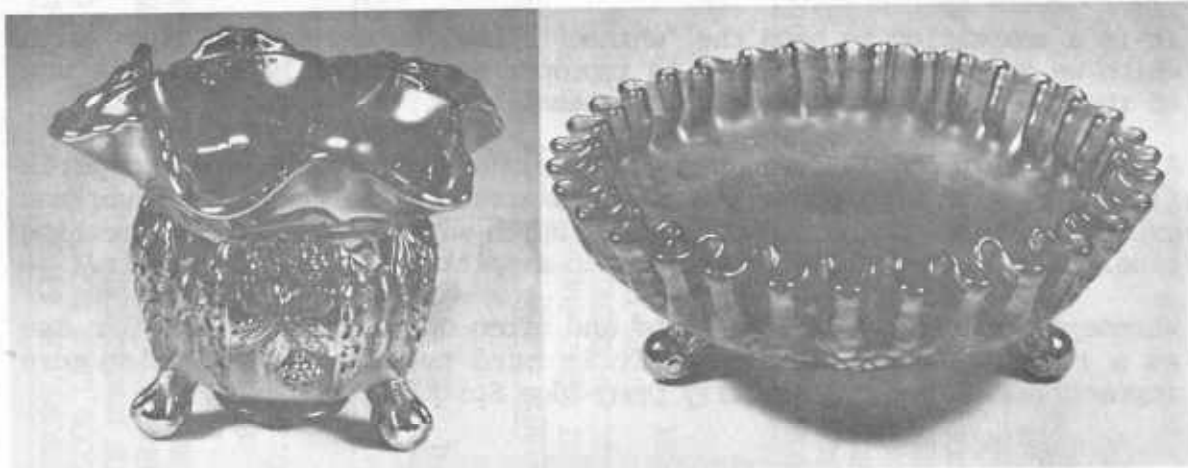


#1 BLACKBERRY SPITTOON

It was formed from the hat shape which is the piece usually found in this pattern. Only two of these are known, one blue and one marigold. The blue one sold at auction for \$2,700 in October, 1981. All true whimsies are rare, but now and then one can be on the grotesque side and not all that beautiful or desirable. I have seen some Palm Beach and Ruffle Rib pieces that would fall into that category.

#2 BUTTERFLY & BERRY SPITTON

#3 VINTAGE NOT BOWL WHIMSEY



The Butterfly and Berry Spittoon in Photo 2 is shaped from the bottom of the covered sugar bowl. The ledge where the lid was supposed to rest is still evident. It is one of a kind but the Rineharts have a spittoon in this pattern which was shaped from the small footed berry bowl.

#4 COSMOS & CANE WHIMSEY

#5 DEEP GRAPE WHIMSEY



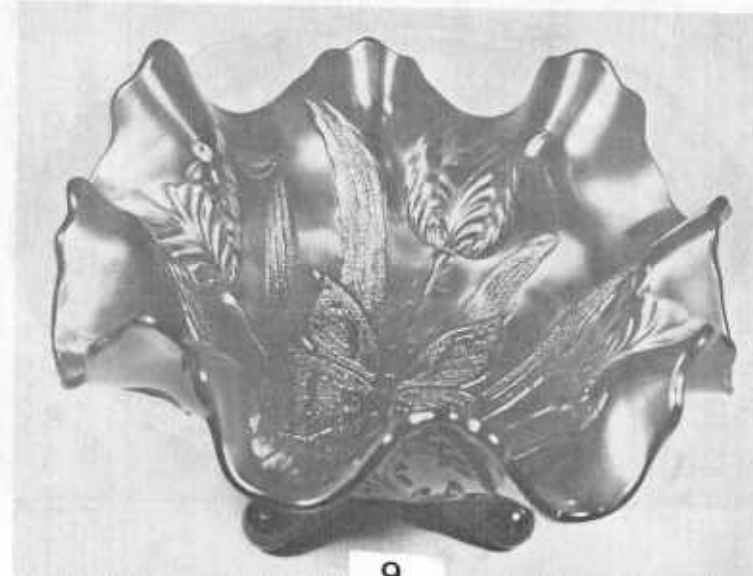
Another example of a true whimsy is Cosmos & Cane piece in Photo 4. It is almost cone shaped and was made from the compote. It is a one-of-a-kind and sold for \$625 at the Heart of America Convention Auction in 1983.

The rare Millersburg Deep Grape piece in Photo 5 is also one-of-a-kind. It sold originally for \$1,700 at the Wilson Auction in 1982. The standard compote is unruffled whereas this whimsy has been tightly crimped around the outer edge.

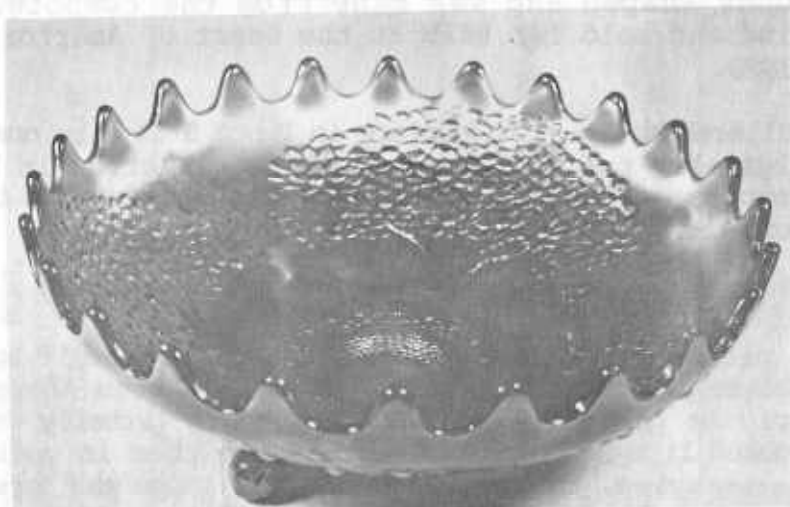
EXPERIMENTAL PIECES

The fact a piece of Carnival has a usual shape doesn't automatically make it a whimsy. There are a number of seldom seen shapes that may more properly be called "experimental." They probably wanted to see what they looked like before deciding to make them in volume. After seeing some examples, they may have felt the shape was impractical and would not sell. In some instances the breakage or expense of productions may have been too great. These pieces are usually variations of a standard shape and consequently a separate mold was not required. The deeply ruffled Butterfly & Tulip bowl shown in Photo 6 is a good example. I have seen but two of these deeply ruffled bowls. They are variations of the flattened, square bowl and the very deep shape which is more or less round. These deeply ruffled versions are both purple. One of them sold privately some 5 or 6 years ago for \$750. It would bring more today.

#6 BUTTERFLY & TULIP BOWL



#7 ORANGE TREE CENTERPIECE BOWL



Two other examples of experimental pieces are shown in Photos 7 and 8. The 12" Orange Tree bowl has been flattened from the Standard Orange Bowl in this pattern while the 10 1/4" Panther Bowl was flattened from the Standard Master Berry Bowl. These pieces are often called centerpiece bowls but the likelihood is they were experimental shapes and not designed for any special purpose.

#8 PANTHER CENTERPIECE BOWL



They are all rare. I have seen but three of the Orange Tree pieces; one in green, one in blue, and one in marigold. It is difficult to quote prices on these as they have never sold at Auction. My guess would be the \$1,000 to \$1,500 range. I have seen two or three of the Marigold Panther pieces but only the one in blue as shown in Photo 8. It sold for \$900 at the 1983 Heart of America Convention Auction.

#9 SQUARE FARMYARD BOWL



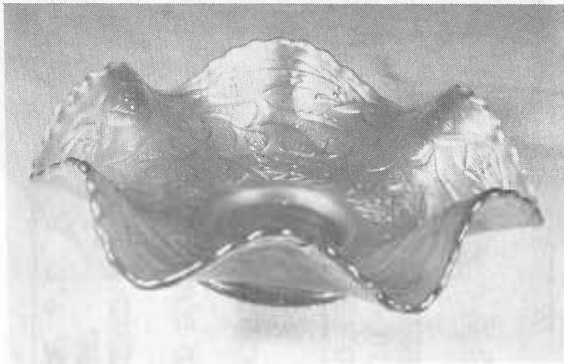
Some pieces are hard to classify. The Square Farmyard Bowl in Photo 9 is a good example. It is not a true whimsy shape, as a square bowl is not necessarily whimsical or impractical. It certainly is a departure from the norm for the Farmyard Bowl. I have seen two of these.

MYSTERY MOLDS

Now and then a piece turns up that offers no explanation. These are pieces where a special mold was required to produce them but they were apparently never put into production. They are usually one of a kind. If they were new patterns it could be more easily understood, as they may not have liked what they saw and decided not to produce that pattern. That is not the case however, as these are variations of standard pattern molds.

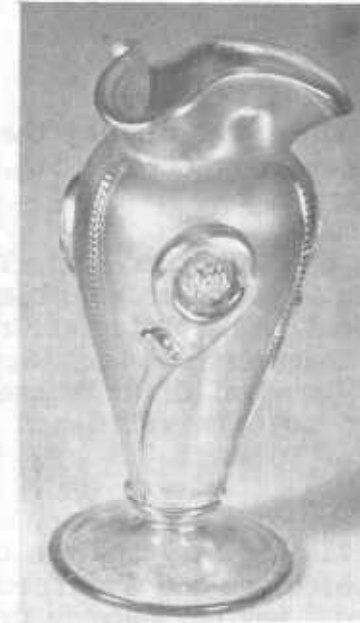
These pieces are a deeper mystery when we remember that molds are the major expense in a glass pressing operation. A good example of this phenomenon is the Little Fishes 6" Bowl shown in Photo 10. This is a collar base bowl and if you will remember, these pieces are supposed to have three ball feet. This is the only one of these I have seen. It is marigold. Neither do I recall seeing the master berry bowl in this pattern on a collar base.

#10 LITTLE FISHES BOWL



The marigold Tornado vase shown in Photo 11 is another of these mystery pieces. The pattern detail of the standard Tornado Vase is carefully maintained but the shape of the mold is entirely different. This one is on a pedestal type base. It is unsigned but I feel it too is a Northwood product. I don't believe I ever saw a standard Tornado that was not signed.

#11 TORNADO VARIENT



Well, I'm not sure I have clarified anything but maybe I have caused you to think about some of the ramifications of our fantastic hobby.

Dear Marge:

The H.O.A.C.G.A. News is getting better each month. Keep up the good work. I am to pick up the Jamboree announcements on November 27. Will send you one. Wish you can come.

Sincerely, Art Smith

Dear Marge:

We've been busy promoting carnival the past few weeks. Had our seventh annual display in our library for entire month of October. Gave talks and displayed glass to local clubs and set up display at St. Charles Depression Glass Show.

Got to keep those new members coming in. Once we get them, your bulletin keeps them. Hang in there Marge, you're doing a great job.

Dear Marge:

Enclosed is a picture of the glass display that I had at the Citizens Valley Bank, Brownsville, Oregon, on October 5th, in honor of Carnival Glass Appreciation Month.

Included in the display was a Red Panther Bowl, Vaseline Horses Head Nut Bowl, Ice Green Enameled Zig Zag Pitcher & Tumbler, Aqua 8" Stag & Holly Bowl, MMG Floral & Optic Bowl, Amber Imperial Grape Tumbler and several other items. I was hoping that visitors would enjoy seeing colors not normally associated with Carnival Glass by the non-collectors. Many times when I have referred to Carnival Glass I have heard "Oh that orange stuff" or "Oh that purple stuff."

The one most memorable comment came from a lady asking about Millersburg Glass. I pointed out the Zig Zag Bowl and she then stated that she had two pieces of Millersburg which she had acquired from her parents who were raised in Millersburg. Way out here in Oregon I was surprised to find someone who had received glass directly from family from Millersburg.

No, that is not Doug in the picture with me! That is Jack Adams, Senior Vice President/Marketing Director of Citizens Valley Bank who helped with our Open House that day.



Sincerely, Karen Engel
H.O.A.C.G.A. Treasurer

OBSERVANCE OF NATIONAL CARNIVAL GLASS MONTH

Dear Marge:

I would like to report that Mr. Micheal Basey and Mr. Harold Fortney had a Carnival Glass Display from October 1 through 11 at the 43rd Avenue Antiques and Unique Gifts Shop in observance of National Carnival Glass Month.

The shop is owned by Steve Rigdon and Ted Geer and located at 2500 W. 43rd Avenue, Kansas City, Kansas.

The display was well received by many people. The theme for the display was the four major producers of glass - Millersburg, Imperial, Fenton, and Northwood.

Michael J. Basey & Harold Fortney

NEW BOOK ON TUMBLERS

Cecil Whitley, a ten year collector of tumblers has completed a new book on enameled tumblers. This is the first book to be written exclusively on painted tumblers. It was written to assist all tumbler collectors in identifying patterns.

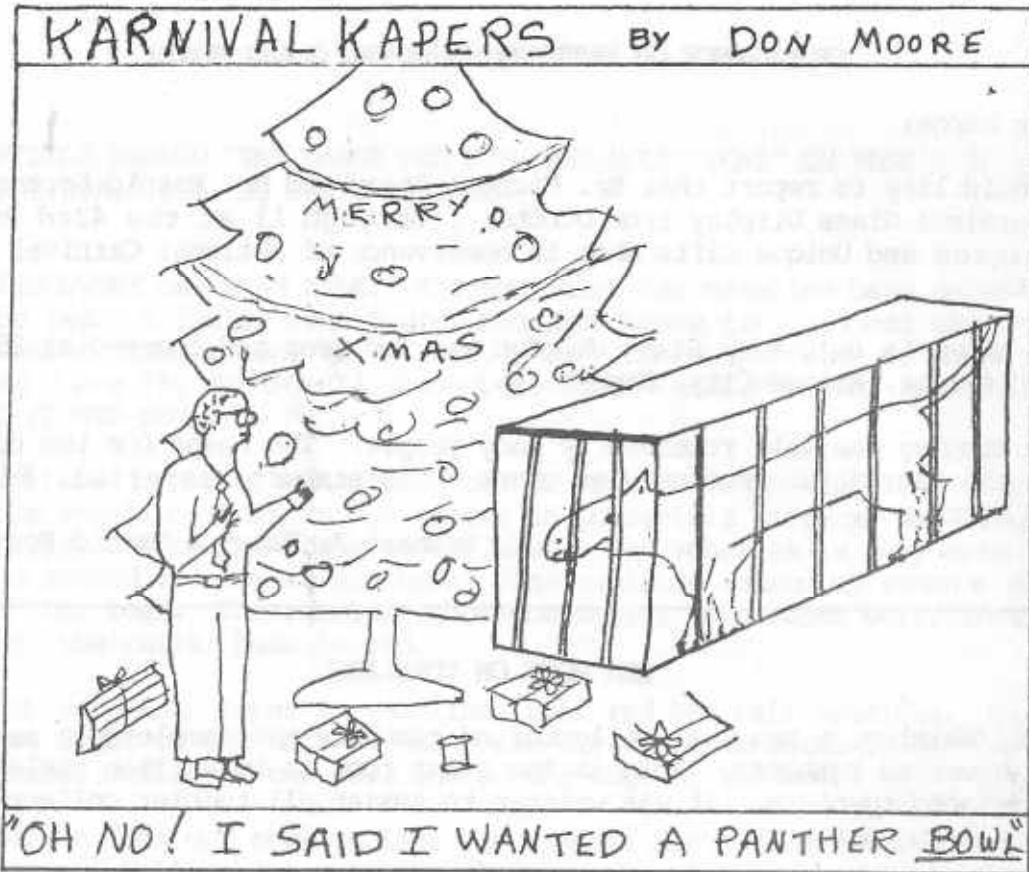
The book has ten pages (60 tumblers) of full color photographs of enameled tumblers and their complete descriptions. Some of these are shown and named for the first time.

The book may be purchased for ten dollars, including shipping. Call or write: Cecil Whitley, 1041 Cheshire Lane, Houston, Texas, 77018, (713) 681-0807).

NOTICE!!!

BULLETIN SECRETARY'S NEW ADDRESS IS:

MARGE MILLER
7619 NW WESTSIDE DRIVE
KANSAS CITY, MISSOURI 64152



2.

Merry Christmas

Marguerite & Howley



NEWSLETTER STAFF



GATEWAY CARNIVAL GLASS CLUB

The Gateway Carnival Glass Club of St. Louis, Missouri, was asked recently by the Gateway Depression Glass Club if we would like to have a display of Carnival Glass at their Fall Show and Sale.

Our Club responded with a resplendent display of punch bowl, plates, bowls, pitchers, tankard and bulbous, painted and regular, and tumblers to match, and compotes.

The show and sale were held at Stegton's Convention Center in St. Charles, Missouri, Saturday and Sunday, November 2nd and 3rd. About 700 people passed through the show and viewed our display. Many patrons commented to the Club they had never seen so much Carnival Glass at one time. While not converting any "Depressioners", our Club feels we made an impact that will not be soon forgotten.

Garth Irby, Secretary

TAMPA BAY CARNIVAL GLASS CLUB

The Tampa Bay Carnival Glass Club held it's regular monthly meeting November 17 at the home of Dorothy and Art Smith in Lakeland.

The meeting began with the usual delicious buffet. It was observed that Carnival Glass Collectors enjoy eating as much as collecting glass.

Shirley Pfaff Conyers gave the Secretary's Report followed by Dorothy Smith with the Treasurer's Report. Art Smith announced that the mailing for the Fifth Annual "Lose Your Heart To Carnival Glass Jamboree" would be completed by November 23. Art also announced that anyone interested in the Jamboree, who has not received an announcement by November 27, can receive one by request from: Art Smith, 4535 Holder Ct., Lakeland, FL 33803, or call 813-644-4058. There have been many inquiries about the Jamboree and a banner attendance is expected. The local cable television company will be on hand for the event.

Shirley and Maurice Conyers will host the Annual Christmas Party, December 15, at their home on Ciega Bay in Madeira Beach.

Art I. Smith

TEXAS CARNIVAL GLASS CLUB

Members of the Texas Carnival Glass Club started gathering at the Holiday Inn in Tyler, Texas, on Friday, November 1, for a weekend of shopping at the Canton Flea Market.

That night an Open House was held in the home of Helen and Roy Bagby and everyone enjoyed visiting, seeing a beautiful collection of Carnival Glass, and eating delicious refreshments.

On Saturday, some people went to Canton while others stayed in Tyler and made the rounds of Antique Shops.

In the evening, Bob and Joyce Etheridge hosted club members at another Open House where more beautiful glass was admired and refreshments enjoyed.

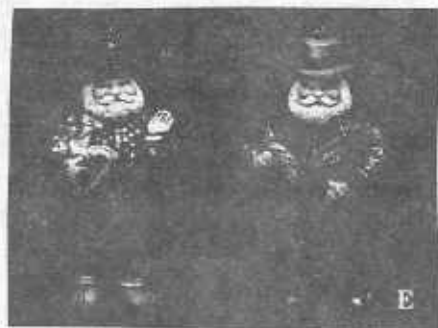
Sunday, at 8:00 A.M., everyone met for a buffet breakfast and business meeting. In the absence of President Arlan Merritt, the meeting was presided over by Vice President Doyle Green.

Plans for the Club's Seventh Anniversary Meeting were discussed. It will be held in the Houston area in February with activities to include a small auction, dinner, and program by John and Lucile Britt. The exact time and place will be announced when final arrangements are complete.

Vice President Green commended Cecil Whitley on her newly published book on Enameled Tumblers. Anyone wanting a copy may contact Cecil at 1041 Cheshire, Houston, Texas, 77018, Cost is \$10.00.

After a short social hour, the meeting was adjourned so anyone who wished could return to Canton for more shopping.

Jane Brown, Secretary



AIR CAPITAL CARNIVAL GLASS CLUB

Our meeting was held at the home of Francis and Wilma Elder, Douglass, Kansas, on November 10, 1985.

All committees reported on the recent Convention held in October. We were all pleased with the outcome and hope everyone who attended were as please with it as well. We were very pleased to sign up 31 new members at our Convention and the breakdown state wise is as follows: Kansas 15, Michigan 2, Missouri 2, Ohio 1, Oklahoma 2, Texas 8, Virginia 1. This brings our total membership to 104.

Already plans are being made for our 1986 Convention. The date has been set for the 3rd week of October, 1986. Mark your calendar now for October 17-18-19, 1986. This will be our 5th Anniversary so plan now to come and help us celebrate.

Roland Kuhn gave the educational program at the meeting this time. He brought several pieces that were thought at one time to be Millersburg, but research has now proven the pieces were made by other companies.

We invite anyone who would like to give a talk or bring us interesting glass to be sure and let us know. We would enjoy having you anytime at our meetings. You need not be a member to do so.

Donald E. Kime, Secretary

ARTICLES AND ADS DUE DECEMBER 25TH FOR THE JANUARY ISSUE

ARTICLES AND ADS FOR THE BULLETIN (NEWSLETTER) MUST BE IN BY THE 25TH OF THE PREVIOUS MONTH. ANY MATERIAL RECEIVED AFTER THAT DATE GOES IN THE FOLLOWING MONTH'S ISSUE.

EXAMPLE: IF YOU WISH AN ARTICLE OR AD TO BE IN THE JANUARY ISSUE IT MUST BE IN NO LATER THAN THE 25TH OF DECEMBER. THIS IS NECESSARY DUE TO THE PROCESSING OF THE BULLETIN AND IN ORDER TO HAVE IT IN YOUR HANDS BY JANUARY 15. MATERIAL RECEIVED AFTER THE 25TH OF DECEMBER WILL APPEAR IN THE FEBRUARY ISSUE.

YOUR COOPERATION WILL BE GREATLY APPRECIATED IN EXPEDITING THE BULLETIN.

THANK YOU.

Marge Miller
MARGE MILLER

Well, it seems our need to recruit new members and infect them with our disease also helps to reduce the amount of glass in the shops. Ruby and I sure don't see much at shows or in the dealers shops.

Being airline people, we decided to visit Victoria, British Columbia, in September and visited all three clubs and 40 antique shops. Result was we met three very nice households and found one Fenton Aqua G/C Bowl. Mrs. Childs showed us a very nice Bowl in A.O. Pattern "Cactus" that she pounced on and paid without checking underneath. Ouch! A very experienced Mrs. Childs now owns a nice piece of Clearly Signed Fenton Glass in a pattern not known in carnival. BEWARE BEGINNERS. POUNCE - CHECK - THEN PAY. Three steps to successful collecting...and don't mix up the order.

Well, we had a nice trip, met some nice folks, and got a rest from the kids. Saw a high proportion of English and Australian Pieces, more than I've seen in our area anyway.

All in all a nice trip. Bye for now.

Ruby and Yvan Beaudry

"GETTING HOOKED ON CARNIVAL GLASS"

I have a collection of Carnival Glass,
Much of it purchased, far in the past.
Some were expensive, some were cheap,
Some were bought on lay away neat.
Sugars, creamers, bowls galore,
Always, always wanting more.
Patterns, patterns, of every kind,
Hoping for them all, I'll eventually find.
If you want to collect, things of the past,
Please don't overlook - Carnival Glass!
Study the patterns, study the books,
I guarantee you, you'll soon get hooked.
Whether you do it for value or do it for love,
The reward will come, from beyond and above.

Pauline Roberts

Fifty-two members and guests attended the quarterly meeting of the Southern California Carnival Glass Club in Huntington Beach, California, on November 18.

Helen Quellette presented the program on red carnival glass, displaying her own and other members' collection, and illustrating the varying degrees of color produced in heating the glass to "bring out the red."

John Resnick added dimension to the program by relating his discussion with Frank Fenton on mineral and oxide elements added to the glass while heating the mix to produce the red color. Contrary to belief, large amounts of gold were not used in red carnival.

President Charles Adams presented the FIRST ANNUAL CHARLES A. ADAMS AWARD to the oldest member in attendance. Helen Westerdahl, who is 81 years young was delighted with her gift of a "new" old piece of carnival glass. She commented, "I don't have this piece in my collection." It was a thoughtful tribute for a very nice lady.

Shelly and Clint Arsenault hosted the lovely meeting, presenting five table prizes - all 6" Marigold Plates and an accompanying Thanksgiving decoration to lucky raffle winners. Two other raffle prizes and a door prize were awarded.

We look forward to our next regularly scheduled meeting on February 16 when Marie Capps will present our program on ice blue carnival treasures. She will venture down to visit from Fresno area with what must be part of the largest pastel collection in the country. She was collecting pastels when other collectors were gathering up the dark glass.

Submitted by: Diane Fry, San Diego, California

IMPORTANT NOTICE FROM MARGE, THE EDITOR

DEADLINE DATE CHANGE

ALL ARTICLES AND ADS DUE BY THE
25TH DAY OF THE PREVIOUS MONTH BEFORE PUBLICATION

"CORRECTION"

THE ARTICLE HEADED "THE LARGE RED STAG AND HOLLY BOWL" ON PAGE 8 OF THE OCTOBER H.O.A.C.G.A. BY ELVIS RANDELL

A NEW DISCOVERY HAS BEEN MADE! The bowl also has vaseline base color in with the red. I called John Britt and Don Moore to find out what to call such a combination of colors. They had never seen or heard of anything like it, so I call the piece "RED VASELINE STAG AND HOLLY RUFFLED FOOTED BOWL."

The vaseline is fabulous. With the black light on the front of the bowl, the vaseline shows in the center on poinsettia pattern, the stags, the hollies, and on the edges of the bowl. The vaseline is very even on the edge around the top of the bowl. The red and amberish covers the rest of the bowl. The vaseline shows on collar base super well, in the center of the collar base is red.

The feet are also super in vaseline, half red and half vaseline. With the black light on the back of the bowl, the vaseline shows on the feet, collar base, center of the bowl and on the edge of the bowl.

The vaseline does not show up like the typical Fenton vaseline carnival. Reminds me of Millersburg vaseline, hard to see without the black light. This is the only piece of carnival glass known in this color combination, which makes the bowl more rare and desirable.

Elvis Randell
5040 E. 2nd Street
Tulsa, Oklahoma 74112
(918) 838-8207

R VAS 10 3/4" LG RUFFLED STAG & HOLLY FTD BOWL (ONLY 1 KNOWN) DESIRABLE
2500



** CARNIVAL GLASS FOR SALE **

MRS. BILL FARMER, RD #5, BOX 462, WHEELING, WV 26003 PHONE: (304) 336-7689			
PM EI N BUSHEL BASKET	50	M EI SWIRL HOBNAIL CUSPIDOR	425
A EI DRAPERY ROSEBOWL	80	G EI FLUTE TOOTHPICK	50
M EI BEADED BASKET	25	A GI BEADED BASKET	50
V EI SWAN, PASTEL	30	M EI PINECONE PLATE	30
A EI LARGE FLEUR DELIS BOWL	120		
JOHN & LUCILE BRITT, 3048 TAMARAK DRIVE, MANHATTAN, KS (913) 539-1933			
G MLBG. CHERRIES TUMBLER RARE	150	B EI MILADY TANKARD, A BEAUTY	650
W DAISY & DRAPES VASE CUPS IN AT TOP	125	P EI IMPERIAL GRAPE PUNCH CUP 2 EA	30
G HEARTS & FLOWERS COMPOTE RARE	550	W EI ORANGE TREE PUNCH CUP 2 EA	45
M HOBNAIL ROSE BOWL SUPER DARK	175	W EI MANY FRUITS CUP, RARE	65
M BUTTION & OPTIC CUP & SAUCER, VERY RARE, SIGNED WITH OLD IMPERIAL MARK		M EI FLUTE & CANE CUP, RARE	65
			145
MARY WALSH, 50 LANCASTER ST., OAKVILLE, CT (203) 274-8954 AFTER 5 P.M.			
P EI ACORN BURRS WATER SET	750	P EI ORIENTAL POPPY TANKARD SET	800
P EI G & C LG. OPEN COMPOTE RARE	300	P EI SAILBOAT SM. BOWL RARE	70
P EI STAR OF DAVID BOWL N	75	P EI HOBNAIL LADY'S SPITTOON (2) EA	100
P EI VINTAGE NUT BOWL 6 FTD	75	BOTH HAVE INSIDE CRACK	25
R EI FENTON OPEN EDGE BASKET (CRACK ON OPEN EDGE)	100	P EI G & C PUNCH CUPS 12 EA.	90
		LP EI LITTLE STARS BOWL SCARCE	
BERNIE MAHN, 1001 ROCK ROAD, DESOTO, MO 63020 PHONE: (314) 586-6226			
A MLBG. BLACKBERRY WREATH 7" TRI-CORNERED BOWL	75	M MINIATURE BASKETWEAVE BASKET	45
A MLBG. CHERRY BUTTER DISH	160	A SKI-STAR 6" RUFFLED SAUCE	55
M KITTENS BOWL 2 SIDES UP	100	A MLBG PEACOCK TAIL VARIANT COMPOTE	80
		G FIELD FLOWER PITCHER	295

** CARNIVAL GLASS FOR SALE **

GEO. LOESCHER, 2420 PARK, BELOH, WI 53511 PHONE: (608) 362-3104
 SM DAISY BASKET - RARE 130 B FRUITS & FLOWERS BON BON 50
 G INVERTED FEATHER CRACKER JAR LID 40 M FIELDFLOWER TUMBLER 12
 G PINECONE 6" PLATE SUPER COLOR 90 G GRAPE & CABLE PLATE 9" 90
 IB NIPPON PIE CRUST EDGE BOWL 165 P PEACOCK AT URN N 6" ICE CREAM
 IG PEACOCK ON FENCE PLATE 195 BOWL 50
 G MLSB. MAYAN BOWL EXCELLENT IRID. 50

J. RICHARD BRANDT, 1313 CHURCH ST., LITITZ, PA 17543 PHONE: (717) 626-7393
 M GRAPE & GOTHIC ARCHES TUMBLER 22 G STIPPLED RAYS BOWL 30
 G IMPERIAL GRAPE WATER SET 6 PCS 240 G SPRINGTIME BERRY SET 7 PCS 280
 A VINTAGE COMPOTE 35 W FLORAL & GRAPE PITCHER 260
 A WISHBONE BOWL 50 W WISTERIA TUMBLER 240
 G THREE FRUITS BOWL DOME FOOTED 80 A FEATHERED SERPENT BERRY SET 7 PC 145

PHIL RAYMER, 33 HICKORY LANE, SAFETY HARBOR, FL 33572 PHONE: (813) 726-4612
 A BUTTERFLIES BON BON 50 P GRAPE & CABLE SHERBERT 50
 M GRAPE & CABLE BREAKFAST SET 2 PC 140 M PANTHER BERRY SET 7 PC 400
 M LATTICE & GRAPE WATER SET 7 PC 380 M QUESTION MARKS BON BON 38
 B PANELED DANDELION WATER SET 7 850 M PEACOCK & DAHLIA BOWL 7" 50
 PO STIPPLED FLOWER BOWL 8" 60 M STIPPLED RAYS N BOWL 50

RAY GODFREY, 519 S. 10TH ST., LEAVENWORTH, KS 66048 PHONE: (913) 651-3575
 M EI KITTENS CEREAL BOWL 90 M EI FEATHERED SERPENT 10" BOWL 40
 G EI MSBG. CHERRY SPOONER 75 M EI HEADRESS 8 1/2" BOWL 30
 A EI CAPTIVE ROSE 8 1/2" BOWL 40 P EI RUFFLES & RINGS 8" BOWL 70
 M EI THUMBPRINT & SPEARS CREAMER 30 M EI THUMBPRINT & SPEARS SUGAR 40
 SM EI SWIRL 7 1/4" VASE 30 R EI LEAF CHAIN 7" BOWL 375

** CARNIVAL GLASS FOR SALE **

GEORGE BOND, 1406 N. FERNCREEK AVE., ORLANDO, FL 32803 (305) 894-0327 AFTER 5
 A EI APPLE BLOSSOM TWIG PLATE 100 A EI G & C BREAKFAST SET 100
 P EI G & C 7 PC WATER SET 375 PO EI DUGAN CHERRY 5" BOWLS (4) EA 40

RUTH SCHINESIUHL, P.O. BOX 694, ABSECON, NJ 08201 (609) 641-1814 AFTER 4 P.M.
 M GRAPE ARBOR PITCHER BEAUTY 275 M OCTAGON DECANTER 70
 M G & C PLATE 65 M SINGING BIRD MUG 35
 M IMPERIAL GRAPE CUP & SAUCER RARE 85 B PEACOCK ON FENCE PLATE (NICE) 395
 A VINTAGE WINE 35 P TRI CORNER MLBG WHIRLING LEAVES 185
 AQUA SAILBOATS SAUCE RARE 125

CLIFF & APRIL DECKER, RD#1, BOX 209, WHITNEY POINT, NY 13862 (607) 692-3762
 M TEN MUMS TUMBLER 28 M N PEACOCK BOWL 130
 M GOOD LUCK PIE CRUST EDGE BOWL 85 G N FINE CUT & ROSE ROSE BOWL 85
 G N TORANDO VASE 130 B EMBROIDERED MUMS BOWL 100
 M HATTIE BOWL 30 G SWIRL VASE 16
 W PERSIAN GARDEN I.C. BOWL 120 M FIELD THISTLE PLATE 340

DICK WETHERBEE, 847 STAFFORD ST., ROCHESTER, MA 01542 (617) 892-4420
 P EI WILD STRAWBERRY 9 1/2" BOWL 85 G EI WREATH OF ROSES 2 HANDLED STEMMED
 IB EI PASTEL SWAN SALT 27 BON BON 55
 PO EI STIPPLED FLOWER 8" RUFFLED BOWL 24
 B EI FENTONS HOLLY SPRIG 5" HAT 38 P EI TOWN PUMP 565
 SQUARE TOP P EI G & C FTD ORANGE BOWL 165
 VASE EI PASTEL SWAN SALT (RARE AND PRETTY) 28 P EI FLOWERS & BEADS 7" TRICORNER PLATE 65
 68



** CARNIVAL GLASS FOR SALE **

THE STRAINS, 832 CARSON RD., FERGUSON, MO 63135 (314) 524-5608

G GI	G & C FTD PLATE	85	M GI	G & C FTD PLATE	60
W EI	APPLE TREE TUMBLER	90	M GI	BLOCKED PANEL TUMBLER RARE	85
A GI	DAISY BLOCK ROWBOAT	300	M GI	DAISY BLOCK ROWBOAT (CHIPS)	75
W EI	PEACOCK AT URN COMPOTE FENTON	300	M EI	MLBG HANGING CHERRIES SAUCE	25
M GI	STORK & RUSHES PUNCH BOWL AND BASE	250			

EDWARD BINSTOCK, P.O. BOX 351, PRESQUE ISLE, ME 04769 (207) 764-3612

B	TWO FLOWERS 9" FTD BOWL	70	M	BUTTERFLY & BERRY COVERED SUGAR	65
M	BUTTERFLY & BERRY COVERED FTD BUTTERDISH	95	M	BUTTERFLY & BERRY CREAMER	65
M	STAG & HOLLY SPAT. FTD BOWL NICE COLOR	65	M	TWO FLOWERS 9" FTD BOWL	35
M	FEATHERED SERPENT 9" CANDY RIBBON BOWL	55	M	STRAWBERRY N STIPPLED PC BOWL LEAF CHAIN 8" BOWL	40
			M	PEACOCK AT FOUNTAIN COVERED SUGAR	90

JOS. MELLO, 535 FISK RD., TIVERTON, RI 02878 (401) 624-2174

M	474 PUNCH CUPS (5) \$10 EA	50	M	G & C PUNCH BOWL BASE	20
M	BUTTERFLY & BERRY BERRY DISHES SMALL 2 EA	20	A	ROSE SHOW PLATE SM N.H. DING ON FLOWER	150
PO	SINGLE FLOWER BOWL	35	M	LUSTRE ROSE TUMBLERS 3 EA	15
PO	STARFISH COMPOTE	45	B	RAMBLER ROSE TUMBLER 1	25

DAVID DEEM, 902 E. WALNUT AVE., BURBANK, CA 91501 (818) 845-4530

M	LIONS BOWL 7" RUFFLED NICE	115	VAS	COINDOT BOWL 8 1/2" RUFFLED EDGES PLAIN (NON-FLUTED) NICE COLOR	55
M	STRAWBERRY PLATE 9" SUPER LAV. GRN. & GOLD IRID PLAIN BACK	80	PAS	M HOLLY PLATE GORGEOUS PASTEL IRID MAY BE CLAMBROTH	85

** CARNIVAL GLASS FOR SALE **

ADAM & ELLEN HEMM, RT 1, BOX 87, CONRATH, WI 54731 (715) 532-5816

M	474 PUNCH CUPS 5 EA	13	M	ROUND-UP RUFFLED PLATE	95
B	SINGING BIRDS MUG	75	B	ORANGE TREE MUG	40
M	DIAMOND & SUNBURST WINES 4 EA	22	M	GRAPE ARBOR TUMBLER	25
M	SODA GOLD WATER PITCHER	115	M	VINTAGE BAND MUG	25
M	BUTTERFLY & BERRY TUMBLERS 3 EA	20	G	ACORN BURR TUMBLER	40

JOE MERRIFIELD, 10018 NE ALTON, PORTLAND, OR 97220 (503) 253-8276

M	MILADY TUMBLER	85	W	ICE CRYSTALS 3 PC JAM SET	65
M	KITTEN PLATE 4 SIDES UP	110	M	KITTEN CEREAL BOWL	110
M	SNOW FANCY SUGAR & CREAMER	80	R	FENTON BASKET	275
A	MLBG BOUTONNIERE COMPOTE	79	A	DIVING DOLPHINS BOWL FTD	125
CL	SMOOTH PANEL PITCHER 6 GLASSES	150	B	ORANGE TREE SUGAR	65

HARM WESTERHUIS, RRI BOX 49, PLATTE, SD 57369 (605) 337-3631

M	RAMBLER ROSE 7 PC WATERSET	275	M	IMPERIAL GRAPE WATER PITCHER & 3 TUMBLERS	125
M	BUTTERFLY & BERRY SM BOWL	25	M	GRAPE ARBOR 6 PC WATERSET	325
M	BUTTERFLY & BERRY LG BERRY BOWL	50	P	VINTAGE 6" BOWL	40
M	PEACOCK AT URN 8" ICE CREAM BOWL SHAPE	65	G	MLBG "BLACKBERRY WREATH" 9" BOWL	55
CLM	NORTHWOOD FLUTE WATER PITCHER	175	G	MLBG HANGING CHERRIES BOWL 6 3/4" (RARE SIZE)	65

MARTY SCHOETTLER, BOX 188, RD3, SEWELL, NJ 08080 (609) 589-4325

M	EI PEACOCK AT FOUNTAIN TUMBLER	20	B	EI STORK & RUSHES TUMBLER	25
B	EI BUTTERFLY & BERRY TUMBLER	30	A	EI ORIENTAL POPPY TUMBLER	30
A	EI INVERTED STRAWBERRY TUMBLER	175	G	GI INVERTED STRAWBERRY POWDER JAR BOTTOM	25
A	EI RASPBERRY MILK PITCHER	150	B	EI CARNIVAL HOLLY 9" BOWL, CR EDGE	50
M	EI BASKETWEAVE HAT ADV BRAND FURN.	55	M	EI STRIPPLED RAYS 10" BOWL N TINY EDGE FLAKE	35

** CARNIVAL GLASS FOR SALE **

DARLENE YOHE, P.O. BOX 343, STUTTGART, AR 72160 (501) 673-3437			
M PEACOCK AT FOUNTAIN ORANGE BOWL	185	M G & C TUMBLERS EA	25
M PEACOCK AT FOUNTAIN 4 PC TABLE SET		M STRAWBERRY PLATE	65
TINY 1" LINE IN CREAMER	280	M PANTHER BERRY BOWL	160
M PEACOCK AT FOUNTAIN TUMBLERS EA	30	M LUSTRE ROSE BUTTER BASE	30
M LION BOWL, TINY ROUGHNESS ONE POINT	85	B G & C SPATULA FID PLATE, FOOT FLAKE	75

STERLING BUTZ, 221 N. ADAMS ST., ALLENTOWN, PA 18104			
M EI HEAVY GRAPE CHOP PLATE	175	M EI ORIENTAL POPPY PITCHER	275
M EI MANY FRUITS ROUND PUNCH BOWL BASE		G EI 8 SIDED BASKET N	350
A EI 9" G & C PLATE B-W BACK	80	G EI IMPERIAL STAR OF DAVID BOWL	40
G EI BLACKBERRY WREATH RUFFLED BOWL MLB.G	40	A EI LITTLE STARS BOWL MLB.G	60
		AQUA EI CHERRY CIRCLES BONBON	160
G EI IMPERIAL STAR OF DAVID BOWL	40	CL EI 1910 NEW ORLEANS SHRINE CHAMPAIGN	35

JERRY BLAKE, 1200 31ST ST., WEST DES MOINES, IA 50265 (515) 225-3977			
P EI STAG & HOLLY 8" BOWL SM FLAKE ON ONE SPATULA FOOT	80	B OPEN EDGE BASKET 2 SIDES UP	30
M GI 2 IRIS BUTTERMILK GOBLETS ONE CHIPPED ON BASE PAIR	30	B PEACOCK AT THE FOUNTAIN TUMBLER	35
M GI STAG & HOLLY 8" ICE CREAM SHAPE BOWL SPATULA FID	55	G GI PERSIAN MEDALLION 7" BOWL	30
		B EI AUTUMN ACORNS 8 3/4" BOWL	45
		M GI DRAGON & LOTUS 8" BOWL	30
		M GI FLORAL & OPTIC BOWL, FEET ROUGH	10



** CARNIVAL GLASS FOR SALE **

GARTH IRBY, 4136 FILLMORE ST., ST. LOUIS, MO 63116 (314) 752-0160 AFTER 6 PM			
P EI IMPERIAL GRAPE PITCHER	225	A EI 6" PLATE-EAGLE BRAND FURNITURE	175
W EI 6" PLATE PERSIAN GARDEN	90	M GI GOLDEN HARVEST DECANTER & STOPPER	75
M EI ROCCOCO VASE FLARED OUT	45		
VAS EI STIPPLE RAYS BOWL	45	G EI WREATH OF ROSES 2 HANDLED COMPOTE	55

CHARLES PERRY, 8641 LAKESHORE DRIVE, SOUTHAVEN, MS 38671 (601) 342-1694			
M COIN DOT ROSEBOWL	50	W FENION HOLLY 9 1/2" PLATE	60
P TORNADO VASE-RIBBED, SM. SIZE	120		

EVA BACKER, 12 SHERWOOD RD., WEST HARTFORD, CT 06117 (203) 233-3761 AFTER 6 PM			
A HOLLY & BERRY 8" BOWL	55	M VINTAGE POWDER JAR	55
M SAILBOAT SAUCE	30	M ORANGE TREE POWDER JAR	58
M STAR MEDALLION WINE GOBLET 6 1/2" TALL	30	A ROSETTE BOWL FOOTED	65
M FENION FLOWERS ROSEBOWL	60	M PEACOCK & GRAPE 8 1/2"	55
M OWL BANK	25	M MY LADY POWDER JAR	65

JANE DINKINS, 1100 RIDGELEY, HOUSTON, TX 77055 (713) 465-0557			
G EI INV. STRAWBERRY POWDER JAR		M G DIAMOND OVALS LG COMPOTE (OR BOTTOM ONLY CHIP ON EDGE)	20
M EI ENAM. PRISM-BAND TUMBLER CROCUS CROCUS	25	M EI BUTTERFLY & BERRY TUMBLER (2 FLEABITES UNDER COLLAR BASE)	10
M EI LUSTRE & CLEAR OPEN IND. SUGAR (HARTUNG #1, P 35)	10	M EI LUSTRE & CLEAR SM BERRY BOWL (MATCHES SUGAR)	10
LG EI FINE RIB SM. RUFFLED BOWL (FLOURESCENT)	20	G G HEAVY GRAPE RUFFLED BOWL 9 3/4" SOME WEAR ON GRAPES	20
CLM EI PILLAR FLUTE PLATE 7 5/8" FLAT IMP. IRON CROSS LOGO	20	LM G HORN OF PLENTY BOTTLE WITH ORIGINAL STOPPER	40

** CARNIVAL GLASS FOR SALE **

TOM & SHARON MORDINI, 36 N. MERNITZ AVE., FREEFORT, IL 61032 (815) 235-4407
 P DIAMOND LACE 7 PC WATER SET 410 G GOOD LUCK PLATE 9" SM. FLAKE OFF 375
 M HATTIE ROSEBOWL NICE, RARE 110 OF HORSESHOE N RARE
 M HEARTS & FLOWERS COMPOTE SUPER 95 PEARL LACY DENDROP COVERED COMPOTE 195
 REVERSE AMBERINA STRAWBERRY BON BON SM. CHIP ON EDGE (OUTSIDE) RARE 160 RED FENTON OPEN EDGE HAT SHAPE
 AQUA G & C 7" BOWL, FENTON 85 SUPER RED 235
 CELEST BLUE DOUBLE STEM ROSE FTD ELEC. BLUE N PEACOCKS PLATE,
 BOWL (INSIDE RIM CHIP) RARE 125 STIPPLED OUTSTANDING PIECE 425

CHARLOTTE TWEDELL, 4908 DARTON LN., LOUISVILLE, KY 40216 (502) 447-1670
 W EI FENTONS LITTLE FLOWERS ROSE B EI TEN MUMS TUMBLER 75
 BOWL 2 TINY NICKS PRETTY 250 PO EI SKI STAR BOWL 3/4 OPAL 95
 SM EI SCROLL & FLOWER PANELS VASE, BEAUTIFUL COLOR 200

JOELLEN ROTONDI, P.O. BOX 401, BUTLER, WI 53007 (414) 354-8254 EVENINGS
 AQUA EI FENTONS ACORN 6 3/4" BOWL, VAS EI HOLLY HAT JACK-IN-PULPIT 45
 MULTICOLOR IRID. 85 IB EI ORIENTAL POPPY TUMBLER N,
 TEAL EI COIN DOT 8 1/4" SHALLOW SUPER IRID. 175
 ROUND BOWL 40 SM EI LUSTRE ROSE FTD 10 1/2" ORANGE BOWL, DEEP COLOR 75

GUARANTEED RETURN PRIVILEGE. LSASE FOR LIST.

JOHN & CAROLYN MIKKONEN, RRL, BOX 474F, SHAKOPEE, MN 55379 (612) 445-6098
 M BLACKBERRY SPRAY HAT 40 P SCROLL EMBOSSED PLATE 215
 B HOLLY PLATE 130 M HOLLY PLATE 90
 W DOUBLE STEM ROSE PLATE 150 P G & C STIPPLED PLATE 185
 M CHERRY FTD BOWL, MLBG 50 M KITTENS CUP AND SAUCER 195
 AQUA HOLLY HAT, 2 SIDES UP 50 GOOD LUCK HOACGA MUGS 83,84,85 EA 5



** CARNIVAL GLASS FOR SALE **

BURNEY TALLEY, 1814 SLATE N.W., ALBUQUERQUE, NM 87104 (505) 242-1261
 WHT. RUSTIC FUNERAL VASE 19" TALL 400 BLUE RUSTIC FUNERAL VASE 21" 235
 7 1/2" WIDE AT MOUTH - BY 7"
 VERY PRETTY M RUSTIC FUNERAL VASE 21" 185
 A DIAMOND & RIB FUNERAL VASE 425 BY 7", GOOD DARK COLOR
 19 1/2" BY 8 1/2" M RIPPLE FUNERAL VASE, 175
 M RIBBED FUNERAL VASE 100 18 1/2" BY 7"
 18" BY 8" BLUE WINE & ROSES LADIES 65
 WHT. ORANGE TREE 6 PC. 550 GOBLET (OR WINE)
 PUNCH SET SAPPHIRE BLUE (DARK ICE BLUE) 235
 HELIOS GREEN RIPPLE FUNERAL VASE 150 RIBBED FUNERAL VASE
 18 3/4" BY 6" 15 1/2" BY 5"

BARBARA NELSON, RFD 4, BOX 155, LAONIA, N.H. 03246 (603) 293-7246
 G EI LEAF & BEADS ROSEBOWL, 65 P EI DIAMOND POINT VASE, 30
 RIBBED INT. GOOD FEET N. 10 1/2" N.
 A EI PEACOCK & URN 5 1/2" 50 M EI BEADED BASKET 30
 ICE CREAM BOWL N. 150 G EI MILLERSBURG CHERRY COVERED 85
 A EI MILLERSBURG CHERRY SUGAR - SUPER
 COVERED BUTTER - SUPER M EI PANTHER MASTER BERRY BOWL 115
 M EI INVERTED COIN DOT WATER 225 EXTRA DARK - SUPER IRID.
 PITCHER, BULBOUS - RUFFLED TOP

TED L. SHEIBLEY, 304A HILLCREST DRIVE, NEW CUMBERLAND, PA 17070

PHONE: (717) 938 6417

P GRAPE & CABLE SHOT GLASS 110 A BLACKBERRY BLOCK PITCHER (SUPER) 1100
 W GRAPE & CALBE CENTERPIECE BOWL 350 B DRAGON & STRAWBERRY BOWL 450
 M PEACOCK & GRAPES 9" FOOTED 175 P GRAPE & CABLE 7 PC. BERRY SET 225
 PLATE A FLUFFY PEACOCK 7 PC. WATER SET 925
 P GRAPE & CABLE TANKARD 825 B PERSIAN MEDALLION CHOP PLATE 255
 7 PC. WATER SET AO THREE FRUITS STIPPLED 9" PLATE 1000

** CARNIVAL GLASS FOR SALE **

SINGLETON BAILEY, P.O. BOX 95, LORIS, SC 29569 (808) 756-7495
 G EI TROUT & FLY CRIMPED BOWL 425 M EI TROUT & FLY CRIMPED BOWL 225
 M EI BIG FISH CRIMPED BOWL 425

OMER E. SWEENEY, 28 ESMOND STREET, ESMOND RI 02917 (401) 231-4108
 M EI CIRCLE SCROLL TUMBLER 200 M EI FISHERMANS MUG 225
 G EI IMPERIAL GRAPE WATER BOTTLE 90 W EI NU ART HOMESTEAD PLATE 300
 M EI LION BOWL 150 V EI ORANGE TREE MUG 100
 G EI RASPBERRY GRAVEY BOAT 100 P EI GRAPE DELIGHT NUT BOWL 50
 P.E CIRCLE SCROLL HAT SHAPE 100 AO EI THREE FRUITS COLLARBASE BOWL 400
 WHIMSEY

RUTH L. CLARK, P.O. BOX 442, FOREST LAKE, MN 55025 (612) 464-6961
 M SINGING BIRDS TABLE SET W DAHLIA TABLE SET 925
 SPOONER HAS TINY FLAKE ON COUPLE TINY BEADS MISSING ON
 HANDLE. SUGAR HAS FLAKE UNDER KNOB BOTTOM, FROSTY
 ON COVER (NICE) W BIG BASKETWEAVE VASE 10" DUGANS 60
 PO SKI STAR 10 1/2" (NUTMEG) BOWL 175 M 6 WATERLILY & CATTAILS TUMBLERS 185

DARCY HILL, 943 SE 13TH AVE., FOREST LAKE, MN 55025 (612) 464-3684
 M EI N PEACOCK AT THE FOUNTAIN M EI MLBG GRAPE WREATH VARIANT BOWL 80
 FUNCH CUPS 6 B EI FEATHER STILCH RUFFLED BOWL 45
 P EI MLBG PEACOCK AT THE URN BERRY P EI PEACOCK AT THE FOUNTAIN TUMBLERS
 SET (1 BOWL HAS CHIP) 650 SET OF 5 150
 PO EI TRIPLETS HAND GRIP PLATE 80 AO EI N EMBROIDERED MUMS RUFFLED BOWL
 LAV EI MLBG ROSALIND RUFFLED BOWL PASTEL (FABULOUS) 1250
 SM. FLAKE UNDERSIDE EDGE WHITE EI PERSIAN MEDALLION 6 3/4"
 GREEN EI LARGE BUZZ SAW CRUET 350 PLATE 55

** CARNIVAL GLASS WANTED **

JANE DINKINS, 1100 RIDGELEY, HOUSTON, TX 77055 (713) 465-0557
 M BASE TO ORANGE PEEL PUNCH BOWL
 M PUNCH CUPS TO PUNCH BOWL (ORANGE PEEL.)

EVA BACKER, 12 SHERWOOD RD., WEST HARTFORD, CT 06117 (203) 233-3761
 IG PEACOCK AT THE FOUNTAIN PUNCH BOWL ONLY
 IB LID ONLY TO POWDER JAR
 M DIAMOND AND SUNBURST STOPPER ONLY TO WIND DECANTER
 A MEMPHIS PUNCH BOWL ONLY

BERNIE MAHN, 1001 ROCK RD., DESOTO, MO 63020 (314) 586-6226
 M ACORN HURRS 5" BERRY BOWL G LID TO INVERTED FEATHER CRACKER JAR
 M TWINS FRUIT BOWL M PINEAPPLE SUGAR

JOELLEN ROTUNDI, P.O. BOX 401, BUTLER, WI 53007 (414) 354-8254 - EVENINGS
 IB ANY PLATES OR PIECRUST EDGED BOWLS IB PEACOCK AT THE FOUNTAIN COMPOTE
 IB 3 FRUITS BOWL, FTD OR COLLAR BASE IG ANY PLATES, ROSEBOWLS, COMPOTES
 IB DAISY & FLUME, OR LEAF & BEADS ROSEBOWLS

W. R. STRAIN, 832 CARSON RD., ST. LOUIS, MO 63135 (314) 524-5608
 A PEACOCK AT URN COMPOTE FENTON W LID FOR G & C CRACKER JAR
 B BASE FOR CHERRY AND CABLE BUTTER DISH

EDWARD BINSTOCK, P.O. BOX 351, PRESQUE ISLE, ME 04769 (207) 764-3612
 G PEACOCKS ON FENCE BOWL W PEACOCKS ON FENCE BOWL
 IB ROSE SHOW BOWL IG ROSE SHOW BOWL
 AMY ROSE SHOW BOWL G ROSE SHOW BOWL
 G PANTHER MASTER BERRY BOWL B PLAID BOWL
 DARK MANY STARS BOWL B PEACH PITCHER

** CARNIVAL GLASS WANTED **

JOS. MELLO, 535 FISK RD., TIVERTON, RI 02878 (401) 624-2174
 M BASE FOR 474 PUNCH BOWL
 DM TOP FOR FASHION PUNCH BOWL
 P BOTTOM TO MLBG CHERRY BUTTER
 A ACORN BURR SPOONER TO TABLE SET

JOHN & CAROLYN MIKKONEN, RR 1, BOX 474F, SHAKOPEE, MN 55379 (612) 445-6098
 PO HOLLY PLATE OR BOWL
 M ENAMELED PRISM BAND TUMBLER
 FORGET-ME-NOT
 R OR LIME GREEN paneled HOLLY TUMBLER

GEORGE BOND, 1406 N. FERNCREEK AVE., ORLANDO, FL 32803 (305) 894-0327 AFTER 5
 MMG PILLAR & DRAPE LIGHT SHADE WITH EI TOP TO BOTTOM (NEED 2)
 B EI ORANGE TREE BASE ONLY FOR PUNCH BOWL (WILL SELL TOP FOR \$100 PLUS \$5.00 POSTAGE)

GARY & KIMBERLY GILKISON, RT. 1, BOX 48, FOSTER, KY 41043 (606) 472-3386
 W CAPTIVE ROSE 9" PLATE
 M EI FRUIT BOWL (ONLY) "MEMPHIS", NORTHWOOD

TED L. SHEIBLEY, 304A HILLCREST DRIVE, NEW CUMBERLAND, PA 17070
 (717) 938-6417

M ORANGE TREE POWDER JAR LID OR SELL BASE
 M SPRINGTIME SUGAR LID OF SELL BASE
 P PEACOCK AT FOUNTAIN SUGAR BASE OR SELL LID
 P PEACOCK AT FOUNTAIN PUNCH BOWL OR SELL BASE
 ANY COLOR PEACOCK PLATES
 ANY COLOR STRAWBERRY STIPPLED PLATES

*Happy Holidays!!!
 To Each and Every one To carnival Friends*

APPLICATION FOR MEMBERSHIP

 THE HEART OF AMERICA CARNIVAL GLASS ASSOCIATION, INC.

DATE _____
 NAME _____
 SPOUSE _____
 ADDRESS _____
 CITY _____ STATE _____
 ZIP CODE _____ TELEPHONE _____
 RECOMMENDED BY _____

Do you want your name in the directory? YES _____ NO _____

DUES ARE \$20 U.S. PER YEAR (JUNE THROUGH MAY)

SEND DUES TO: H.O.A.C.G.A.
 GLEN FORTNEY, SECRETARY
 P. O. BOX 303
 BUCKNER, MO 64016

A FEW OF THE BENEFITS OUR CLUB OFFERS:

The ONLY MONTHLY PUBLICATION on just Carnival Glass Collecting, keeping you informed of new discoveries and all of the current events. Members only may advertise, FREE OF CHARGE!!!

An exclusive PATTERN NOTEBOOK with yearly special inserts (ALL inserts are still available)

ANNUAL SOUVENIR AND CONVENTION WITH SOME OF THE GREATEST PEOPLE YOU CAN HOPE TO MEET!!!

<<<< JOIN TODAY >>>>

*** 1985 H.O.A.C.G.A. SOUVENIR BELL ***

In 1985 H.O.A.C.G.A. decided to make a series of 4 Souvenir Bells - each different bell would feature a Portrait of a Famous Maker of Carnival Glass.

The first bell, which was made as the 1985 Souvenir, has a portrait of HARRY NORTHWOOD during the time he was heavily engaged in the production of Carnival Glass. The beautiful circle scroll pattern is used for the balance of the bell pattern. The bell is Red, made by Fenton, and contains the H.O.A.C.G.A. logo and Fenton trademark.

In 1986 the bell will feature the portrait of FRANK L. FENTON, one of the founders of the Fenton Art Glass Company. We will follow with the JOHN FENTON, founder of Millersburg Glass Company and a prominent person of Imperial Glass Company.

It is our belief that this souvenir will make a beautiful and collectable piece of Carnival Glass in addition to honoring those responsible for the making of our favorite glass. We hope you will enjoy and appreciate this souvenir.

A few of the HARRY NORTHWOOD Souvenir Bells are still available at \$35.00 each plus \$2.50 postage. Don't miss out on the first of these bells.



MAKE CHECKS PAYABLE TO: HOACGA
MAIL REMITTANCE TO: MR. JOHN BRITT
3048 TAMARAK DRIVE
MANHATTAN, KANSAS 66502

I wish to order _____ 1985 Souvenir Bells at \$35. Add \$2.50 Shipping Cost

NAME: _____

ADDRESS: _____

CITY, STATE, ZIP: _____